

NONE

SOUTHERN RAILROAD

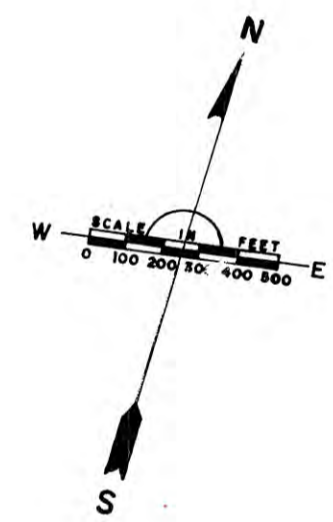
LAKE PONTCHARTRAIN

U.S. HIGHWAY NO. 11

INTERSTATE HIGHWAY NO. 10

LAKE PONTCHARTRAIN

L-6



OFFICIAL ZONING MAP
 APPROVED AND ADOPTED AS PART OF CAL. ORD. NO. 4599
 REVISED AND ADOPTED AS PART OF M.C.S. ORD. NO. 4264
 ADOPTED 4/23/75

NONE

P

P

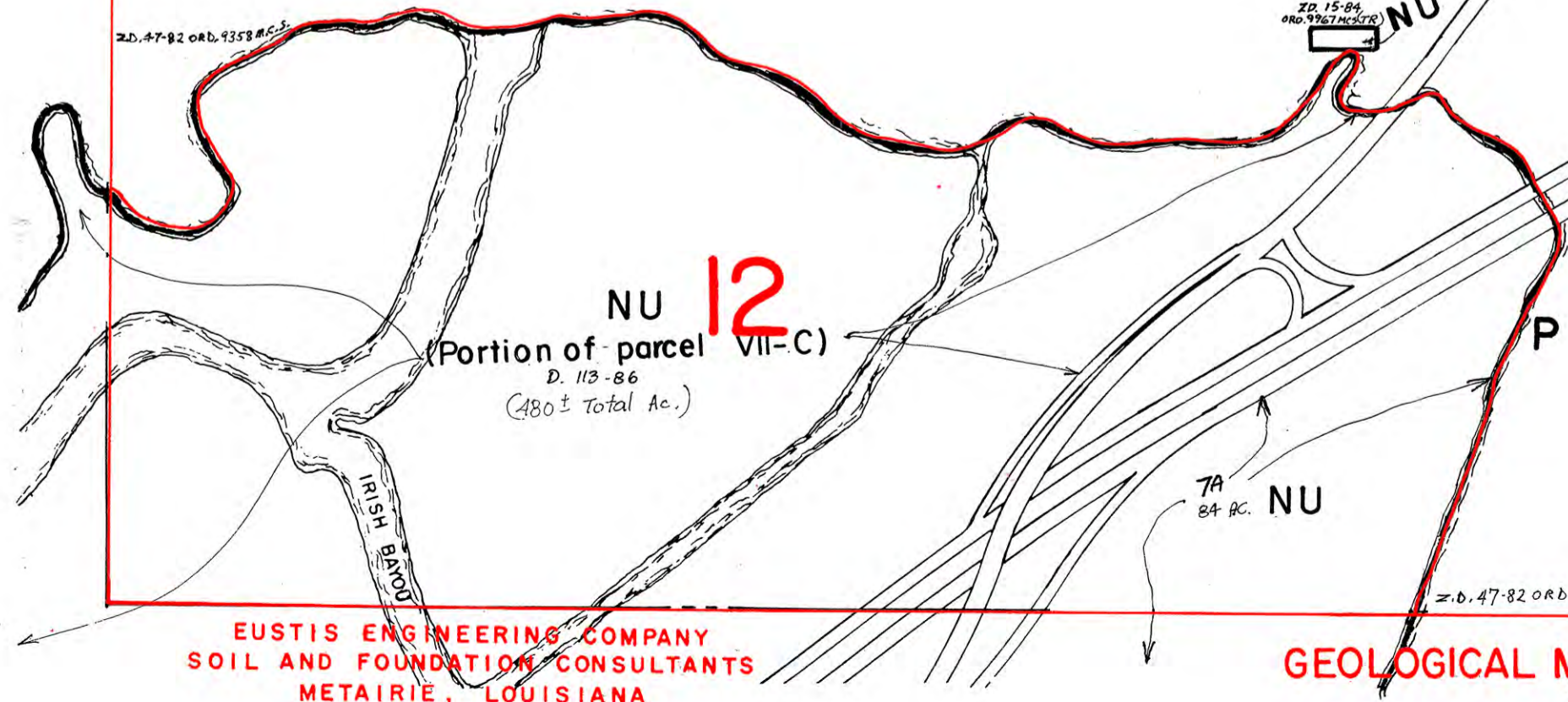
NU

P

NU 12
 (Portion of parcel VII-C)
 D. 113-86
 (480± Total Ac.)

TA
 84 AC. NU

z.d. 47-82 orb. 9358 M.C.S.



EUSTIS ENGINEERING COMPANY
 SOIL AND FOUNDATION CONSULTANTS
 METAIRIE, LOUISIANA

GEOLOGICAL MAPPING UNITS

PREPARED BY CITY PLANNING COMMISSION REVISED 1970
 2-6-86 TFL

M-6