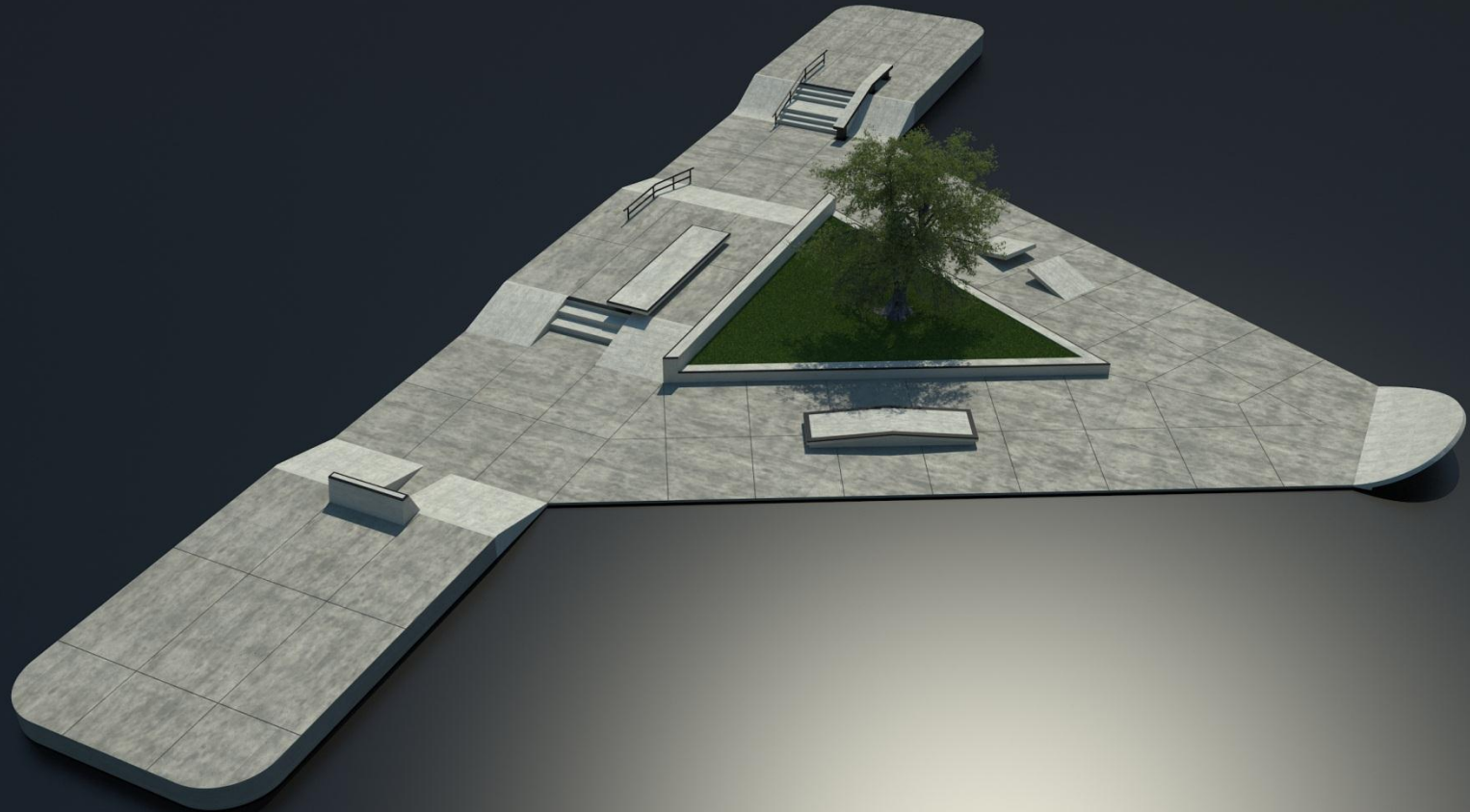


SKATE PARK SITE SELECTION CRITERIA



Conceptual Image of Spohn Ranch / Red Bull Park Donation

SITE SELECTION CRITERIA

BASIC SITE CONSIDERATIONS:

- Ownership of site: Does the City own the site?
- Size of site: Is the site capable of providing a minimum of 10,000 sf of dedicated skatepark area?
- Site contours: Has the site been previously developed (i.e., graded and ready for construction and installation of skate park elements)?
- Site conditions: Is there an environmental mitigation effort needed for site soils?
- Site infrastructure: Are the basic utilities present on the site (i.e., electric, water, sewer) and in working condition?

SITE SELECTION CRITERIA

Access

Skate parks must be accessible to the broader community and in a central location near residential areas, easily accessible by public transportation and existing pedestrian infrastructure. (A remote skate park will only attract those people who have the means to reach it).

- Is the site highly visible to passing pedestrian and vehicular traffic?
- Is the site adjacent to bus or streetcar service routes?
- Is the site located within a population dense area?
- Is the site easy to find and get to for the users?

SITE SELECTION CRITERIA

Sociability

Skateboarders are passionate and committed individuals. Like most people, skaters would rather recreate with other people around than alone. Non-skaters who happen to be nearby can add to the overall sense of community inclusion at the skatepark; the facility should be designed for lots of community mixing. Healthy skate parks incubate a community of park regulars who greet each other and contribute to an overall sense of belonging.

- How friendly is the site environment and the current site users?
- Is the site clean and well-tended by current users?
- Do women and the elderly use this site currently?
- Does it feel safe and hassle-free?
- Does the space provide good photo/video opportunities for sharing via social media?

SITE SELECTION CRITERIA

Activity

The contextual setting of the skatepark – its surrounding area – should be active with other users. This diversity keeps the environment interesting and vibrant; without it, the space will feel “overrun” and homogenous...a place for “skaters only.” Planners can quickly eradicate the sense of activity (and sociability) by surrounding the skatepark with a tall fence. The activity of a place indicates how much engagement opportunity there is.

- Is there nearby parking? Site lighting? Restrooms?
- Are there other nearby activities (i.e., recreational, commercial services, etc.) that can be linked to the skatepark?
- Is the site open (unfenced) to allow flow between onsite and offsite activities?
- Are there various things to do within the site to appeal to a diverse ages and interests?
- Are there individual and group activities currently occurring on the site?
- Are there quiet or reflective and active, dynamic activities happening on the site?

SITE SELECTION CRITERIA

Comfort

Often overlooked, comfort is a way of expressing that the users are an important and valued part of the community. A comfortable environment allows people to set proper expectations about the area, use the area in a way that is natural and intended, and ultimately take pride in this venue. For many skaters, the skatepark will become their central gathering point for years. An uncomfortable space will feel unsafe and attract the wrong element.

- Is there plenty of space to move, stand, and sit?
- Is there a sense of place for the site (i.e., is it a descriptive location in terms of place and identity)?

CNO / NORD RECREATIONAL and GREEN SPACES

CPA/PDU in collaboration with NORD, Parks and Parkways and Property Management has identified approximately 239 recreational sites in the City of New Orleans.

These sites consist of green spaces that include; Parks, Play Spots, Neutral Grounds, Squares, General Green Spaces, Play Grounds, Sports Facilities, Recreation/ Community Centers, Golf Courses and Wild Life Refuges.

These 239 sites represent over 25.5k acres of recreational /green space under the City's management and operation.

CITY OF NEW ORLEANS

NORD Universe



CITY OF NEW ORLEANS
MAYOR'S OFFICE
CAPITAL PROJECTS

~NORD UNIVERSE~

Legend

- Park ID Call-out
- NORD Facilities
- Orleans Parish
- RTA Routes
- Interstates
- US Highways
- State Highways
- Major Roads
- Local Roads
- Secondary Roads
- Water Areas
- Neighborhoods

NORD UNIVERSE FACILITIES (127)

MAP	NO	NO	NORD FACILITY NAME	STREET	COUNCIL
1	0	0	A.1. Davis Playground & Pool	2000 La Salle St	B
2	0	2	Alma Peters Playground	340 Decatur St. & Annunciation St.	B
3	0	4	Annunciation Square	740 Bienville St. & Annunciation St.	B
4	1	1	Average Playground	6300 Tchoupalaque St. & Exposition	A
5	0	0	Barringer Playground	10000 Marston St. & Williams St.	C
6	2	6	Berkman Center, Playground Pool & Football St.	2000 Gen. Meyer Ave.	C
7	0	0	Bodinger Playground	3400 Kenner St. & Memorial Park Dr.	C
8	0	0	Box Playground (Hill Square)	1200 St. Louis St.	D
9	0	0	Bryant Playground	2211 Laura & Pleasant St.	D
10	0	0	Brookview Playground	4215 S. Broad Street	B
11	0	0	Bunny Pond Playground	1200 Safford St.	D
12	0	0	Burke Park (City Square)	2024 Annunciation & Second	D
13	0	0	Calderon Playground	1219 Dauphin St.	B
14	0	0	Canal River Playground	4340 Annunciation Ave. & Westminster St.	C
15	0	0	Canine Playground	3015 Post Ave. & Tall Oak	C
16	0	0	Canine Playground	600 S. Jefferson Davis Hwy. & Beulin	C
17	0	0	Canine Playground (Hawkins)	301 Verret St. & Pelican St.	C
18	0	0	Canine Playground	3000 Natchez St. & Davis	C
19	0	0	Canine Playground	6300 Forsyth St. & Davis	A
20	0	0	Canine Playground	6000 Delgado St.	C
21	0	0	Canine Playground	5001 St. Charles Ave. & Octavia	A
22	0	0	Canine Playground	5000 Wilcox Dr.	D
23	0	0	Canine Playground	10100 Oakwood Dr.	C
24	0	0	Canine Playground	615 Verret St. & Opelousas St.	C
25	0	0	Canine Playground	6154 Althea St.	C
26	0	0	Canine Playground	1400 Bayou St.	A
27	0	0	Canine Playground	6100 Poydras St. & Perdido	D
28	0	0	Canine Playground	6000 Verret St. & S. Levee	D
29	0	0	Canine Playground	500 Wilcox St. & Berkman	D
30	0	0	Canine Playground	1401 Metairie St.	C
31	0	0	Canine Playground	6000 Canine St. & Poydras	E
32	0	0	Canine Playground	1401 Canine St. & Poydras	E
33	0	0	Canine Playground	1411 Toulouse & N. Levee	A
34	0	0	Canine Playground	3000 Trefler & Decatur St.	A
35	0	0	Canine Playground	1100 La Salle St. 2100 Bonnet	B
36	0	0	Canine Playground	2211 Louis St. & S. Poydras	C
37	0	0	Canine Playground	3225 Newton St. & Perdido	C
38	0	0	Canine Playground	1700 Fleur de Lys & 30th St.	A
39	0	0	Canine Playground	1300 Wilcox & Levee	C
40	0	0	Canine Playground	1929 Wilcox Dr. & Wilcox	A
41	0	0	Canine Playground	1400 Poydras St. & Levee	A
42	0	0	Canine Playground	1011 Harrison Ave. & Marston, City Park	A
43	0	0	Canine Playground	1400 Wilcox St.	A
44	0	0	Canine Playground	1401 Althea St. & N. Wilcox St.	E
45	0	0	Canine Playground	201 S. Alexander & Harrison	A
46	0	0	Canine Playground	7000 Bienville St. & Curran	D
47	0	0	Canine Playground	2001 New Orleans Street & Lee	D
48	0	0	Canine Playground	1020 St. Louis St. & N. Levee	C
49	0	0	Canine Playground	2022 Levee St. & S. Levee	A
50	0	0	Canine Playground	4002 Levee St. & Marston Ave.	C
51	0	0	Canine Playground	1300 Gen. Collette St.	C
52	0	0	Canine Playground	1000 N. Claiborne St. & Bernard	C
53	0	0	Canine Playground	2000 Franklin Ave.	C
54	0	0	Canine Playground	5001 Bienville St. & S. Levee	C
55	0	0	Canine Playground	1014 Magnolia St. & Andrew St.	B
56	0	0	Canine Playground	6000 Curran	D
57	0	0	Canine Playground	4001 Canal St.	D
58	0	0	Canine Playground	6000 Gen. Collette St. & Levee	C
59	0	0	Canine Playground	6002 Spanish Fort & Central Park Pl.	A
60	0	0	Canine Playground	3020 MacArthur Blvd. & Marston	C
61	0	0	Canine Playground	515 Pelican St. & Bienville	C
62	0	0	Canine Playground	1014 St. Louis St.	C
63	0	0	Canine Playground	600 Napoleon Avenue	B
64	0	0	Canine Playground	2022 Laffite St.	A
65	0	0	Canine Playground	1000 Laffite St.	A
66	0	0	Canine Playground	3225 St. Thomas & Pleasant Street (Clio)	B
67	0	0	Canine Playground	1801 Natchez Blvd.	C
68	0	0	Canine Playground	624 Louisiana Ave. & Tchoupalaque St.	B
69	0	0	Canine Playground	501 Bienville & Harrison	C
70	0	0	Canine Playground	1114 Poydras & Camp St. & Bienville	C
71	0	0	Canine Playground	2000 Franklin Ave. & Lee	C
72	0	0	Canine Playground	1014 St. Louis St. & Levee	C
73	0	0	Canine Playground	1014 St. Louis St. & Levee	C
74	0	0	Canine Playground	400 Mount & Bienville Pl.	A
75	0	0	Canine Playground	1014 St. Louis St. & Levee	C
76	0	0	Canine Playground	1014 St. Louis St. & Levee	C
77	0	0	Canine Playground	1014 St. Louis St. & Levee	C
78	0	0	Canine Playground	1014 St. Louis St. & Levee	C
79	0	0	Canine Playground	1014 St. Louis St. & Levee	C
80	0	0	Canine Playground	1014 St. Louis St. & Levee	C
81	0	0	Canine Playground	1014 St. Louis St. & Levee	C
82	0	0	Canine Playground	1014 St. Louis St. & Levee	C
83	0	0	Canine Playground	1014 St. Louis St. & Levee	C
84	0	0	Canine Playground	1014 St. Louis St. & Levee	C
85	0	0	Canine Playground	1014 St. Louis St. & Levee	C
86	0	0	Canine Playground	1014 St. Louis St. & Levee	C
87	0	0	Canine Playground	1014 St. Louis St. & Levee	C
88	0	0	Canine Playground	1014 St. Louis St. & Levee	C
89	0	0	Canine Playground	1014 St. Louis St. & Levee	C
90	0	0	Canine Playground	1014 St. Louis St. & Levee	C
91	0	0	Canine Playground	1014 St. Louis St. & Levee	C
92	0	0	Canine Playground	1014 St. Louis St. & Levee	C
93	0	0	Canine Playground	1014 St. Louis St. & Levee	C
94	0	0	Canine Playground	1014 St. Louis St. & Levee	C
95	0	0	Canine Playground	1014 St. Louis St. & Levee	C
96	0	0	Canine Playground	1014 St. Louis St. & Levee	C
97	0	0	Canine Playground	1014 St. Louis St. & Levee	C
98	0	0	Canine Playground	1014 St. Louis St. & Levee	C
99	0	0	Canine Playground	1014 St. Louis St. & Levee	C
100	0	0	Canine Playground	1014 St. Louis St. & Levee	C
101	0	0	Canine Playground	1014 St. Louis St. & Levee	C
102	0	0	Canine Playground	1014 St. Louis St. & Levee	C
103	0	0	Canine Playground	1014 St. Louis St. & Levee	C
104	0	0	Canine Playground	1014 St. Louis St. & Levee	C
105	0	0	Canine Playground	1014 St. Louis St. & Levee	C
106	0	0	Canine Playground	1014 St. Louis St. & Levee	C
107	0	0	Canine Playground	1014 St. Louis St. & Levee	C
108	0	0	Canine Playground	1014 St. Louis St. & Levee	C
109	0	0	Canine Playground	1014 St. Louis St. & Levee	C
110	0	0	Canine Playground	1014 St. Louis St. & Levee	C
111	0	0	Canine Playground	1014 St. Louis St. & Levee	C
112	0	0	Canine Playground	1014 St. Louis St. & Levee	C
113	0	0	Canine Playground	1014 St. Louis St. & Levee	C
114	0	0	Canine Playground	1014 St. Louis St. & Levee	C
115	0	0	Canine Playground	1014 St. Louis St. & Levee	C
116	0	0	Canine Playground	1014 St. Louis St. & Levee	C
117	0	0	Canine Playground	1014 St. Louis St. & Levee	C
118	0	0	Canine Playground	1014 St. Louis St. & Levee	C
119	0	0	Canine Playground	1014 St. Louis St. & Levee	C
120	0	0	Canine Playground	1014 St. Louis St. & Levee	C
121	0	0	Canine Playground	1014 St. Louis St. & Levee	C
122	0	0	Canine Playground	1014 St. Louis St. & Levee	C
123	0	0	Canine Playground	1014 St. Louis St. & Levee	C
124	0	0	Canine Playground	1014 St. Louis St. & Levee	C
125	0	0	Canine Playground	1014 St. Louis St. & Levee	C
126	0	0	Canine Playground	1014 St. Louis St. & Levee	C
127	0	0	Canine Playground	1014 St. Louis St. & Levee	C

0 0.5 1 2 3 4 Miles

12.13.2011 Orleans Parish

Disclaimer Notice: "This is not a survey-quality product. The information is derived from the City of New Orleans Enterprise GIS Database. The City of New Orleans does not assume any liability for damages arising from errors, omissions, or use of this information. End users of the data are advised to be aware of the positional accuracy, data collection dates, compilation methods, and cartographic format (as described in the accompanying metadata), and are advised to utilize these data appropriately." Use of these data for any reason other than for informational purposes is NOT recommended, and the liabilities of such usage are the sole responsibility of the entity using or redistributing the data.

SKATE PARK SHORT LIST – Joe Brown Park



SKATE PARK SHORT LIST – Lafitte Greenway



This aerial map shows the Behrman Memorial Park area in San Antonio, Texas. The park is centrally located, featuring several green sports fields, including soccer fields and a baseball field. The map is overlaid with a grid of streets, including General Meyer Ave, Pace Blvd, Socrates St, and Lawrence St. To the north of the park is Delgado Community College, and to the south is the Perry Walker High School. The map also shows surrounding residential areas and other local landmarks like the Skelly Baseball Stadium.

SKATE PARK SHORT LIST MAP



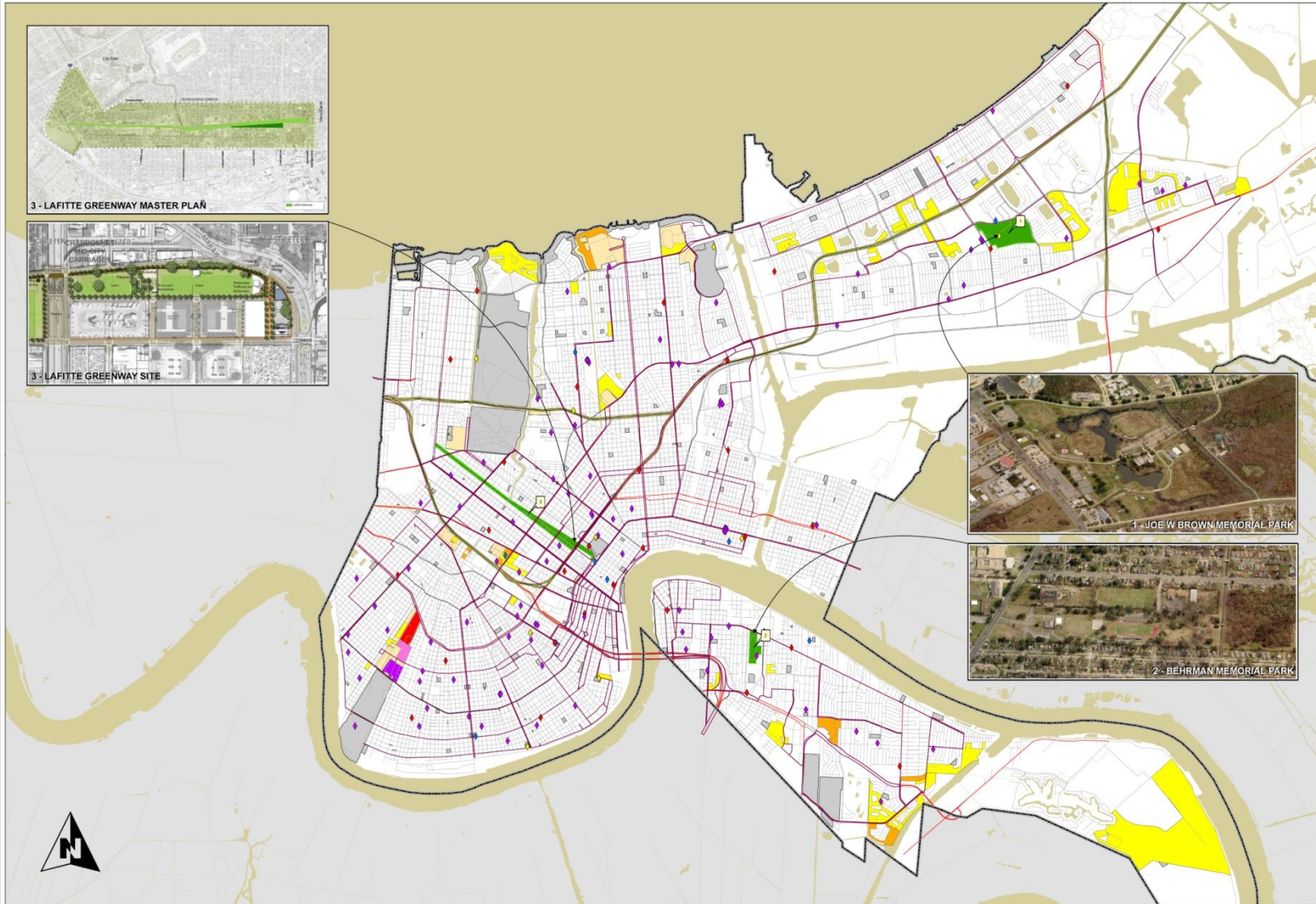
CITY OF NEW ORLEANS
MAYOR'S OFFICE
CAPITAL PROJECTS



MAP
ID: NAME: STREET:
1 Joe Brown Park 5601 Road Blvd. & Lake Forest
2 Behrman Park 2500 Gen. Meyer Ave.
3 Lafitte Greenway Claiborne Ave & St. Louis St.

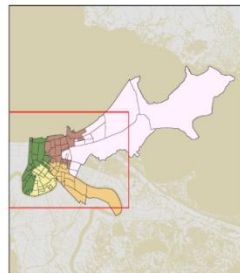
CITY OF NEW ORLEANS - CAPITAL PROJECTS

Skate Park Selection Map



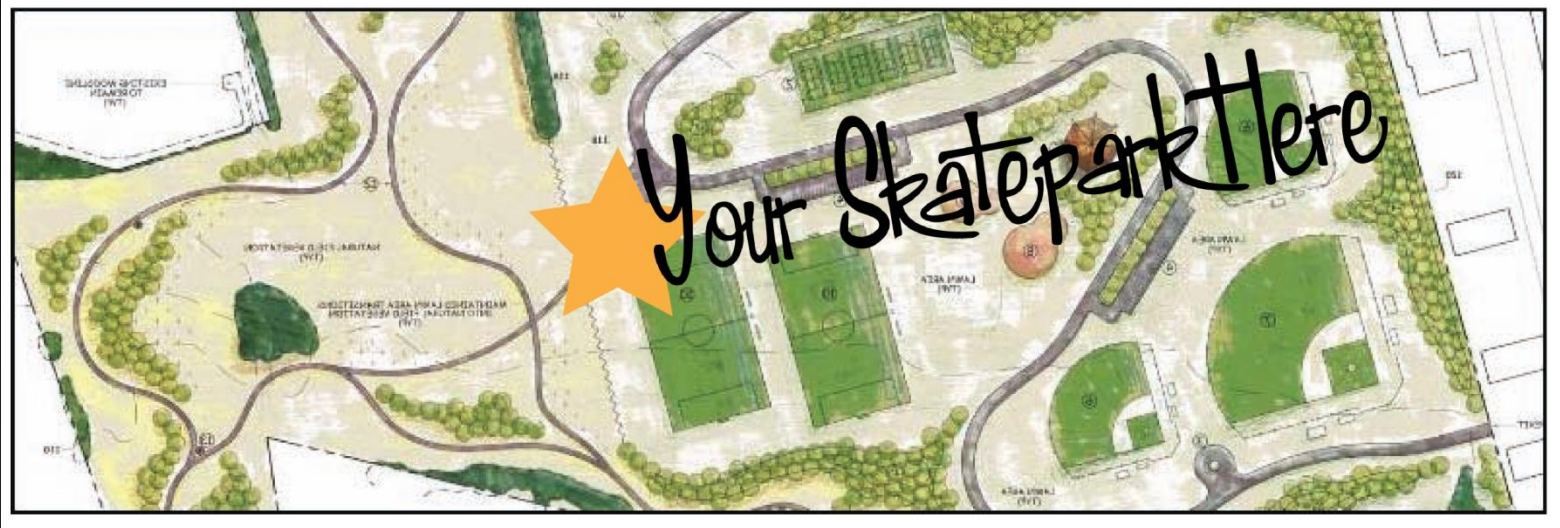
0 0.5 1 2 3 4 5 6 7 8 Miles

12.13.2011 Orleans Parish



Disclaimer Notice: "This is not a survey-quality product. The information is derived from the City of New Orleans Enterprise GIS Database. The City of New Orleans does not assume any liability for damages arising from errors, omissions, or use of this information. End users of the data are advised to be aware of the positional accuracy, data collection dates, compilation methods, and cartographic format (as described in the accompanying metadata), and are advised to utilize these data appropriately." Use of these data for any reason other than for informational purposes is NOT recommended, and the liabilities of such usage are the sole responsibility of the entity using or redistributing the data.

FORWARD STRATEGY



WHAT'S NEXT?

- Conduct Public Comment Meetings (in Council Chambers)
 - 1.) Wednesday, December 21, 2011 (3pm until 5pm)
 - 2.) Wednesday, December 28, 2011 (10am until noon)
 - 3.) Wednesday, January 4, 2011 (3pm until 5pm)
- Consolidate and analyze information;
- Submit recommendations to NORD Commission for final selection.