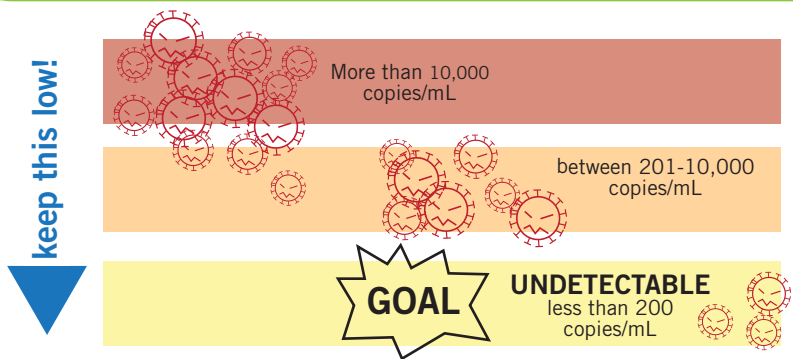


# what's your score?



viral load

copies/mL

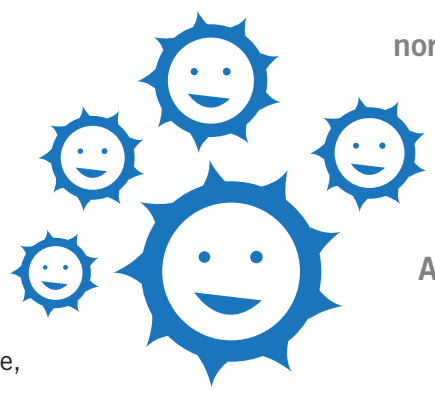
**VIRAL LOW-D  
KEEP IT LOW**

Viral load measures how much virus is in your blood.

keep this high!

**CD<sub>4</sub> (T-CELL)**

cells/mm<sup>3</sup>



CD4, white cells or T-CELLS fight off disease in your body. The more you have, the stronger your immune system is.

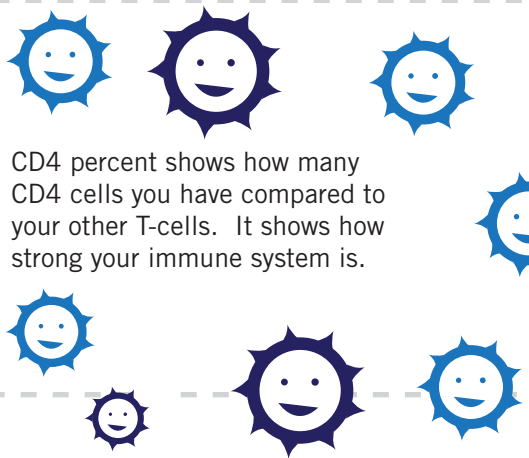


**CD<sub>4</sub> — WE WANT MORE!**

keep this high!

**CD<sub>4</sub> percent**

%



CD4 percent shows how many CD4 cells you have compared to your other T-cells. It shows how strong your immune system is.

