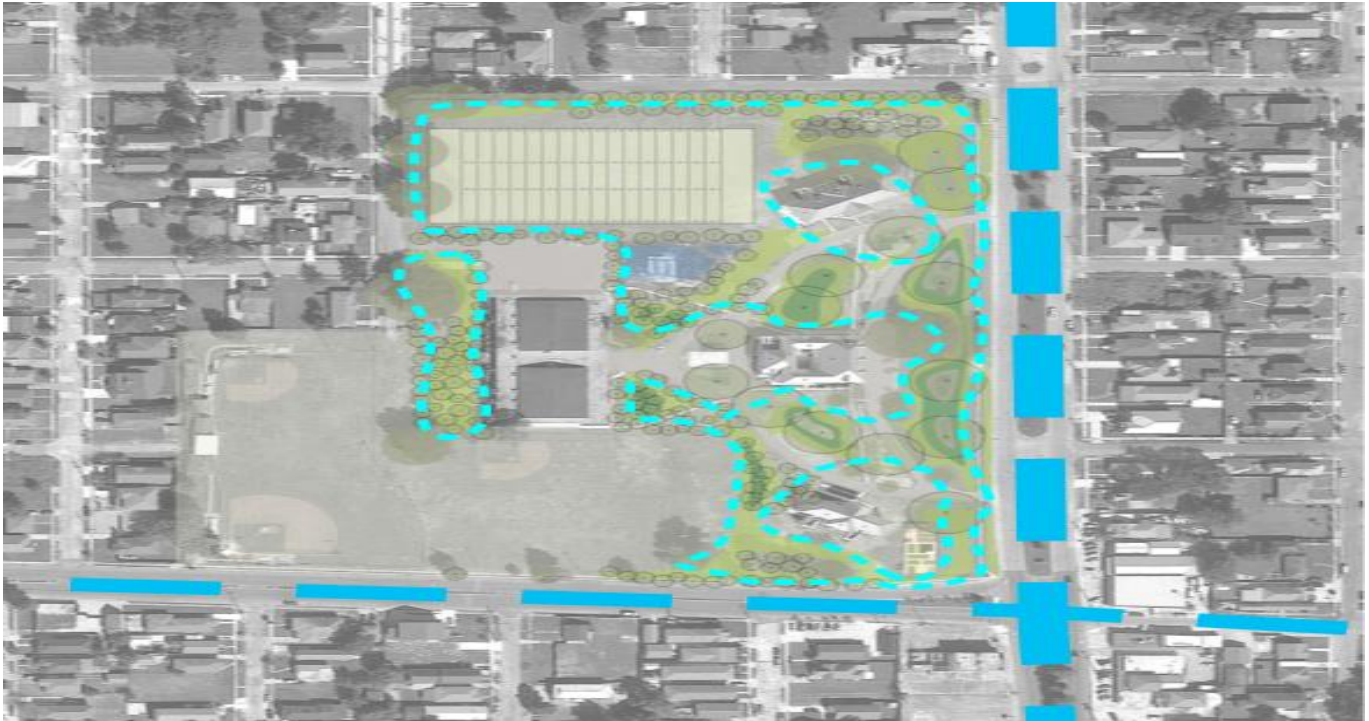


Milne Campus

Fact Sheet | August 2018



Milne Campus

Overview

The Milne Campus is a 17-acre site located along two major thoroughfares in the Milneburg neighborhood, Franklin and Filmore Avenues, part of the designated Gentilly Resilience District. The project includes Development of an existing historic site with green infrastructure and recreational enhancements with a focus on youth development, water-focused education and economic development. Due to its adjacency to these major streets and its large open spaces, the campus is envisioned to not only reach its full potential as the center for New Orleans' youth, but also provide much needed water management for the neighborhood.



Issues to be Addressed

FLOODING – excess water the drainage system cannot handle

New Orleans receives 60 inches of rainfall per year on average. Flooding occurs during greater rates of rainfall. Our drainage system can handle one inch of rain for the first hour, and one-half inch with each following hour.

SUBSIDENCE – sinking of the land caused by dry organic soils

Low-lying areas of New Orleans, such as Gentilly, are former marshlands with organic (highly porous) soils that need water to remain stable. Pumping drains the soils of water, causing them to shrink like a sponge and swell again when it rains. This shrink-swell effect causes differential movement, which damages streets and building foundations.



**Resilience +
Sustainability**

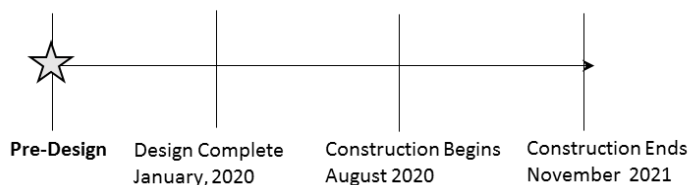
CITY OF NEW ORLEANS

Timeline & Funding

The City has secured \$6.8 million dollars in federal funding through the City's award from the US Department of Housing and Urban Development (HUD)'s National Disaster Resilience Competition (NDRC).

The HUD funds to be invested in this project will be used to enhance landscape design and support programmatic features such as educational or recreational amenities that will be developed through further discussion between the City and the community.

Timeline



Benefits

Improve stormwater management and reduce flood risk and subsidence.

- a. Example measures may include: high-performance play fields with subsurface storage, bioswales, increased pervious cover, tree cells, and constructed wetlands

Enhance and add value to existing and future programs of the site, including NORDC, NOLA FOR LIFE, and water-focus education and economic opportunity activities, with a focus on youth programming.

- a. Facilities may include:
 - i. Recreational fields
 - ii. Testing, training, and educational gardens
 - iii. Improved site circulation and access to transit
 - iv. Flexible spaces for NORDC and NOLA FOR LIFE events and programs

Engage the city's youth, especially teens, in important topics for the city's future, including: water management, environmental stewardship, community development, and economic opportunity.

Gentilly Resilience District

The Gentilly Resilience District is a combination of efforts across Gentilly to reduce flood risk and slow land subsidence. The city's first Resilience District uses various approaches to water and land management that have been successfully piloted throughout New Orleans. When implemented together, these approaches are intended to beautify neighborhoods, improve health, and provide opportunities for recreation



Contact

Natalie Manning
Community Engagement Specialist
nnmanning@nola.gov
504-658-8709
www.nola.gov/resilience



CITY OF NEW ORLEANS
MAYOR LATOYA CANTRELL