

An aerial photograph of Richard Lee Park, showing a large grassy field, a winding path, and surrounding trees. The image is faded and serves as a background for the report cover.

RICHARD LEE PARK

STRATEGIC PLAN


COMPLETE PROJECT REPORT

August 14th, 2013



CITY OF NEW ORLEANS

DANA BROWN &
Associates

An aerial photograph of a large, open, grassy field, likely a park or sports field. The field is surrounded by trees and a building is visible in the background. The text is overlaid on the center of the image.

**In partnership with the
City of New Orleans,
the Recovery School District,
and the Lower Ninth Ward Community.**

Prepared for:
The City of New Orleans

Prepared by:
Dana Brown & Associates, Inc.

TABLE OF CONTENTS

PART I: LOWER NINTH WARD ANALYSIS	1
Project Background	2
Soil Study	3
Transportation System	4
Park Walkability	5
Park System Study	6
Current NORDC Programs	7
Park Inventory	8
PART II: RICHARD LEE PARK ANALYSIS	9
Site Features	10
Site Buffers	11
Site Photos	12 - 13
Vegetation Study	14
School & Neighborhood Pedestrian Connectivity	15
Drainage Study	16
Sun/Shade Study	17
PART III: PUBLIC WORKSHOP NO. 1	18
Workshop Summary	19
Group Studies	20 - 25
Commonalities	26
Workshop Findings & Attendees	27
PART IV: SCHEMATIC DESIGN ALTERNATIVES	28
Alternative 1: Baseball	29
Alternative 2: Football & Track	30
Alternative 3: Passive Park No. 1	31
Alternative 4: Passive Park No. 2	32

TABLE OF CONTENTS CONT.

PART V: PUBLIC WORKSHOP NO. 2	33
Alternative Preference Results	34
Alternative Pros & Cons	34
Recommendations	35
Attendees	35
 PART VI: PUBLIC WORKSHOP NO. 3	 36
Public Workshop No. 3	37
 PART VII: Final Master Plan	 38
Plan	39
Perspectives	40
Nodes & Plazas	41
Stormwater Management	42
Final Master Plan: Bird's Eye View	43
Final Master Plan: Detail Areas	44 - 45
Opinion of Probable Cost	46 - 47
Public Workshop Comments & Attendees	48
DBA Contact Information	49

An aerial photograph of a park, likely a baseball field, with two distinct playing areas. The fields are surrounded by dense green trees and a clubhouse building is visible near the bottom right. The overall scene is captured from a high angle, showing the layout of the park and its natural surroundings.

PART - I

LOWER NINTH WARD ANALYSIS

PROJECT STREET: BACKGROUND

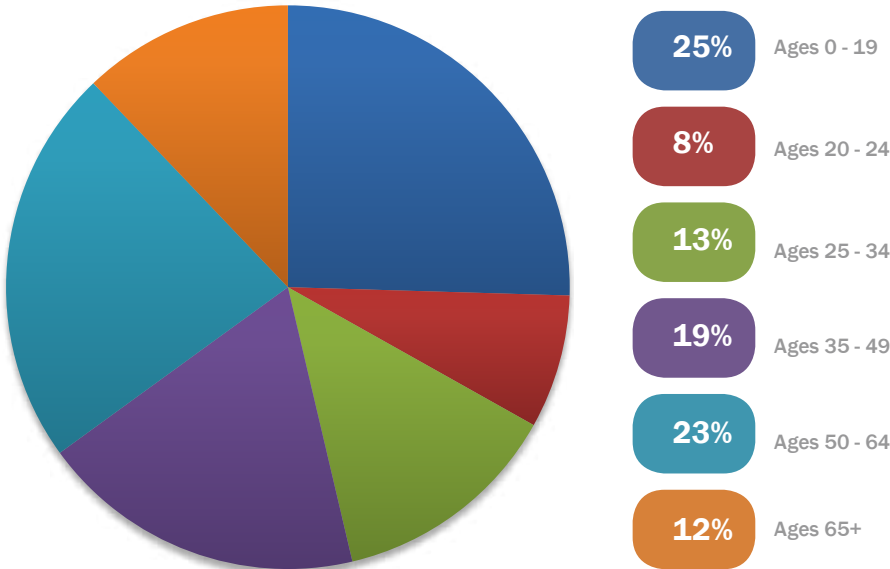
Richard Lee Park is an 8 acre parcel that once housed a public elementary school and park in the Lower Ninth Ward of New Orleans, Louisiana. The site is bound by residential properties, N. Rocheblave, Andry, and N. Miro Streets. A new campus to replace the Alfred P. Lawless High School, destroyed by Hurricane Katrina, is being planned just north of the current park site, across N. Rocheblave Street.

The park site contains unused restroom and concession facilities, older playground equipment, and a covered basketball court in need of repair. The majority of the site is open green space dotted with large Live Oak trees and surrounded by sidewalks in disrepair. It is the intent of this project to create a park facility that complements the new adjacent school and other Lower Ninth Ward parks.

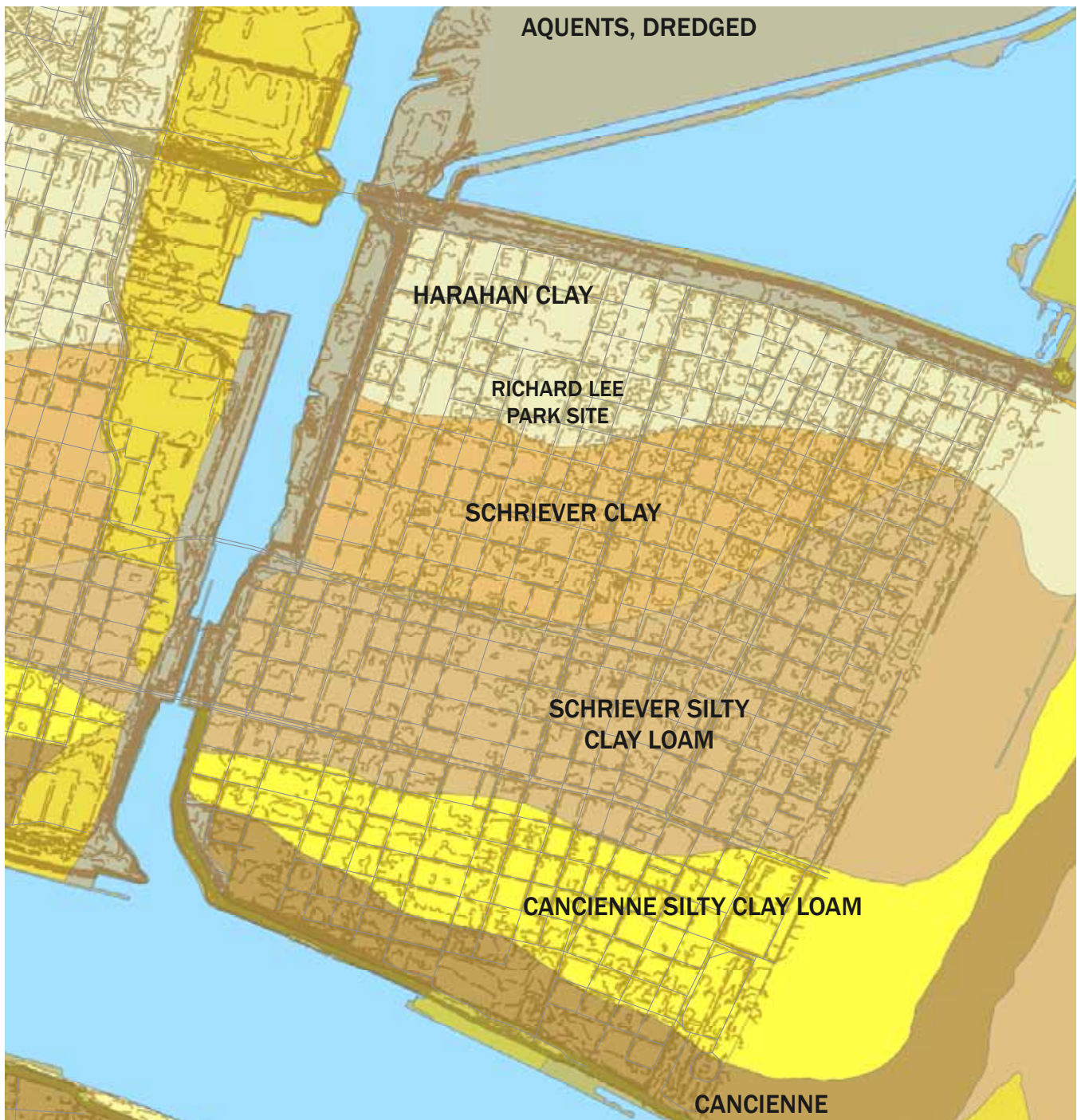
The total population of the Lower Ninth Ward and Holy Cross neighborhoods in 2010 was 5,556, which is 30% less than it was before Hurricane Katrina in 2005. The projected population for 2020 is around 8,500 residents. This area once had the highest population density in the city. Currently, the majority of the population in the area is under 19 years old closely followed by ages 50 to 64.

While the neighborhoods are still recovering, it is hard to convince residents to move into this area without adequate schools, parks, and commercial shopping. This poses a unique challenge to the design process. Keeping these challenges in mind, it is important to program Richard Lee Park with elements and facilities that will be most useful to a population of this size, to the age groups in most need, and provide amenities that will invite and support future growth.

2010 POPULATION BREAKDOWN BY AGE GROUP



LOWER NINTH WARD: SOIL STUDY



According to the most recent data from USGS, Richard Lee Park is located on Harahan Clay, which consists of very deep, poorly drained, very slowly permeable soils. It is typical of clay soils to swell and shrink depending on their moisture content. The park area soils are 5.7% organic matter which makes it more prone to subsidence. To address the shrink/swell characteristic of the clay soils and subsidence potential of true organic matter, the master plan will need to provide green infrastructure for groundwater recharge.

LOWER NINTH WARD: TRANSPORTATION SYSTEM



There are two public bus lines that run through the Lower Ninth Ward and, with the addition of Alfred Lawless High School to the neighborhood, a school bus route has been proposed. This bus route would use Andry Street as its main drop off to the school. Because of the relationship between Richard Lee Park and the future school site, part of the park site closest to the school will likely become a waiting area for pedestrians.

LOWER NINTH WARD: PARK WALKABILITY DIAGRAM



A number of parks in the Lower Ninth Ward that are in walking distance of Richard Lee Park and the future Alfred Lawless High School. Also, the connectivity between parks and places of interest can be established using Caffin Avenue as a primary connector road. The close proximity of the parks to each other make it unnecessary to duplicate most of the park elements. Given limited capital and maintenance resources available within the City, minimizing duplication is imperative.

LOWER NINTH WARD: PARK SYSTEM STUDY

The Lower Ninth Ward neighborhood is re-establishing recreational facilities and activities. Richard Lee Park will mark the redevelopment of the largest park in the neighborhood. Its size and proximity to the Lawless School, which has set aside land for eventual use as sports fields, enable the park to house more and different recreational facilities than most other parks in the Lower Ninth Ward and Holy Cross neighborhoods.

Due to constrained land, capital funds, and maintenance reserves, it is essential that program elements in other parks that are in close proximity to the new Richard Lee Park not be duplicated. Elements and facilities to accommodate all age groups must be considered in the park's design. Four playspots around the neighborhood are designed for younger children, but the area is lacking facilities for teenagers. Two baseball fields in the neighborhood, at Oliver Bush Playground and at Sam Bonart Playground, are built for little league play. Five basketball courts in the neighborhood appear to be the only facilities for older kids. Alfred Lawless High School will attract this under-served age group to the area, so it is imperative that the final park incorporates elements for older children as well as adults and other neighborhood residents not currently well-served by the existing recreational infrastructure.



Playground Equipment at Oliver Bush Playground



Delery Playspot



Basketball Facility at Sam Bonart Playground



Roffignac Playspot

CURRENT NORDC PROGRAMS

The New Orleans Recreation Development Commission (NORDC) is in charge of actively programming park activities around the City including programs in other parks like senior aerobics, music and dance lessons, athletic activities ranging from basketball to cheerleading, and summer camps. NORDC provides programs based on the following age groups:

Ages 5 to 12

Ages 13 to 19

Ages 50+

Many Lower Ninth Ward residents desire activity and program elements that are not readily available to them now. Examples of multi-use parks that serve a large community in other areas of New Orleans are Joe Brown Park in New Orleans East, Behrman Memorial Park on the West Bank, and Harrell Complex in Uptown. Each of these parks was designed to accommodate NORDC activity programs that meet the community's needs, as will the Richard Lee Park Strategic Plan.



Victory Field Rendering at Joe Brown Park



Building Facility at Behrman Memorial Park

IMAGES FROM FLICKR

LOWER NINTH WARD: PARK INVENTORY

	Richard Lee Park	Oliver Bush Playground	Roffignac Playspot	Sam Bonart Playground
Agency	NORDC	NORDC	NORDC	NORDC
Location	2200 Andry St.	2500 Caffin Ave.	Alabo St. & N. Tonti	1200 Forstall St.
Size	8 acres	4.5 acres	1/4 of an acre	2 acres
Playground				
Basketball	1 covered	2 covered; 1 open		1 covered
Tennis		4 courts		
Baseball	Little league	Softball		Little league
Gym				
Pool				
Lighting				
Restrooms				
Picnic Pavilion				
Arts & Culture				
Trails				
Status	Design Phase	Reopened: 9/2012	Reopened: 7/2010	Reopened: 6/2012

	Delery Playspot	Sanchez Community Center & Natatorium	Levee Trail
Agency	PP	NORDC	CORPS.
Location	6334 Alhambra St.	1616 Caffin Ave.	Along MS River
Size	1.5 acres	64,352 square feet (GSF) 54,956 square feet (NSF)	About 1 mile
Playground			
Basketball			
Tennis			
Baseball			
Gym			
Pool			
Lighting			
Restrooms			
Picnic Pavilion			
Arts & Culture			
Trails			
Status	Reopened	Open: Summer 2014	Open

An aerial photograph of Richard Lee Park, showing a large grassy field, a baseball field, and surrounding trees and roads. The image is faded and serves as a background for the title.

PART - II

RICHARD LEE PARK ANALYSIS

RICHARD LEE PARK: SITE ANALYSIS



The existing Richard Lee Park site holds the potential for a great new space in the Lower Ninth Ward neighborhood. The site currently has overgrown vegetation, areas that hold water, broken fences, cracked sidewalks, and structures that are in disrepair. Many residential lots are vacant, but with the addition of a new park and the planned Alfred Lawless High School, this portion of the neighborhood should encourage future growth and development.

RICHARD LEE PARK: SITE BUFFERS



When considering sports programming for Richard Lee Park, it is preferable to have at least a 20 foot buffer from property lines to sporting facilities, though it is not always practicable in an urban setting. Buffers in cities can be as narrow as 5 feet to accommodate sports fields.

RICHARD LEE PARK: SITE PHOTOS



Oak trees along Andry St. create a gateway into the park



Sidewalks that surround the park site are cracked and inconsistent



Cracked basketball court and unsafe overhead structure



Outdated playground equipment is in need of repairs

RICHARD LEE PARK: SITE PHOTOS



The drains along streets are broken and not functional



Existing structures have been neglected



These open drains are hazardous and collect trash



Boundary fences are rusted and overgrown



The baseball backstop is broken and overgrown

RICHARD LEE PARK: VEGETATION STUDY



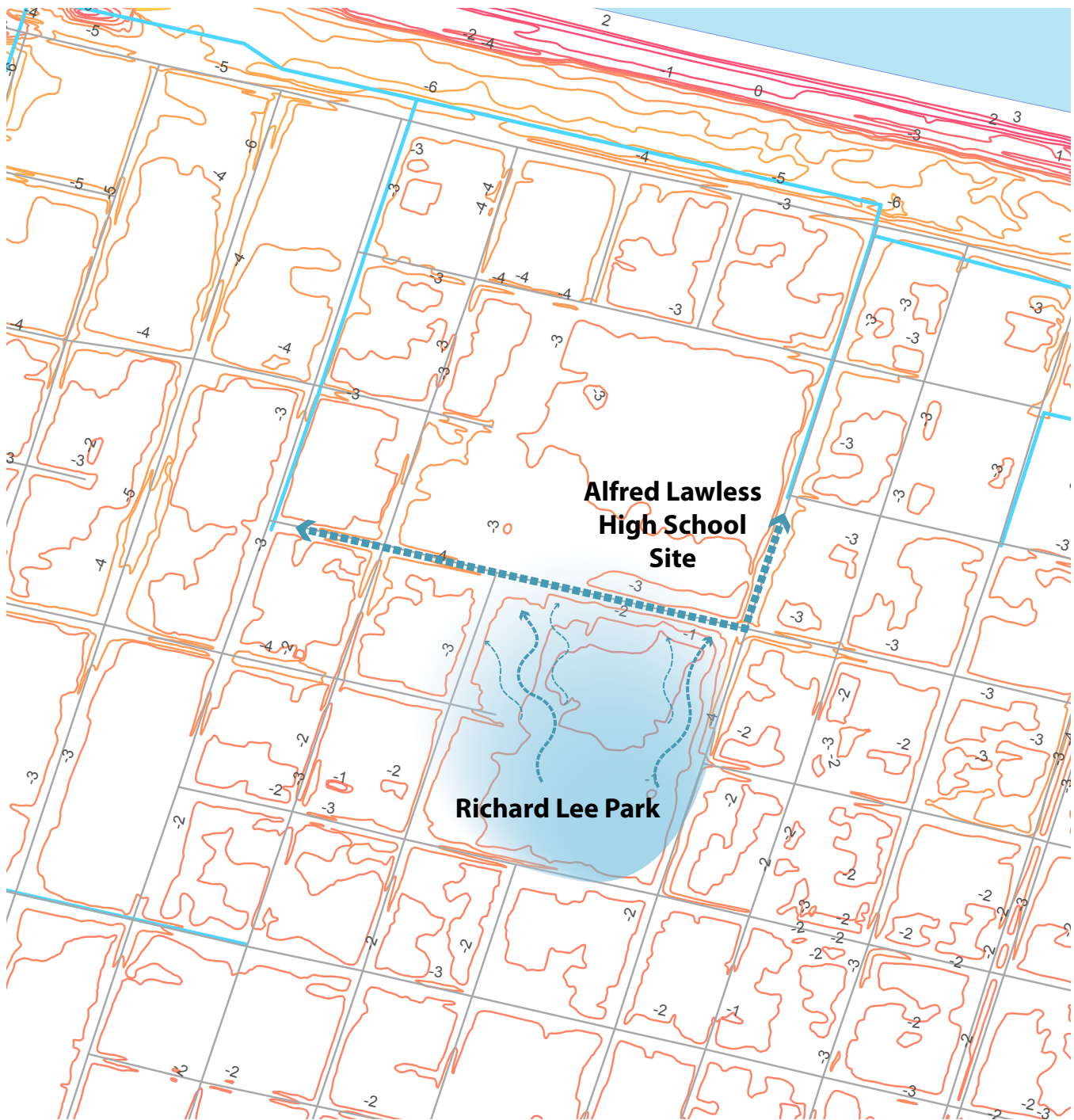
The ground surface of Richard Lee Park is mostly open grass, but a number of large, beautiful Live Oak trees are over 70 caliper inches. These oaks provide shade, while serving to break up the large site. During park construction, it is important that these oaks are protected and heavy machinery is kept away to prevent soil compaction around their roots. Each tree should be fenced off from the trunk to the drip line. Chinese Tallow trees were also found on site. These trees are a non-native invasive species that should be removed from the site.

RLP: SCHOOL & NEIGHBORHOOD PEDESTRIAN CONNECTIVITY



Alfred Lawless High School is designed to be a three story, 139,000 square foot facility, adjacent to Richard Lee Park. The design includes a gym that will seat 850 people for basketball games and an auditorium that will seat 475 people. The school's main entry will be on the corner of Andry and N. Rocheblave Streets. This provides an opportunity for a park entrance at the intersection that also relates to the school site.

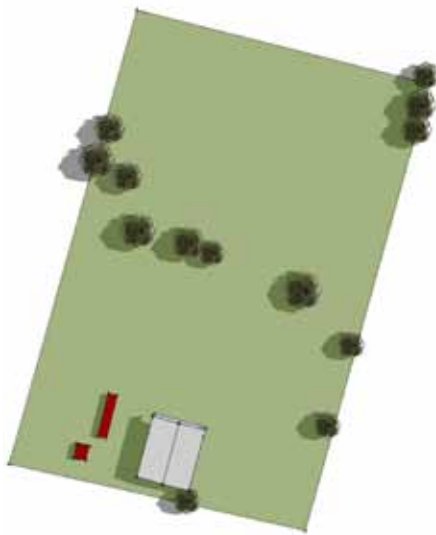
RICHARD LEE PARK: DRAINAGE STUDY



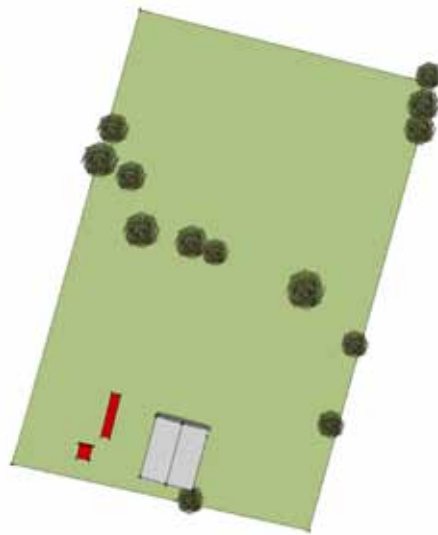
Richard Lee Park is two feet below sea level, with the lowest point in the northwest portion of the site. The majority of the park site currently drains in the northwest direction into street gutters which lead to an underground pipe along Reynes Street. The eastern-most portion of Richard Lee Park slopes to Andry Street, which is 4 feet below sea level, then drains to the north in an underground pipe located below the street. The park open space presents an opportunity to minimize stormwater runoff from the site, thereby reducing the burden on the drainage system.

RICHARD LEE PARK: SUN/SHADE STUDY

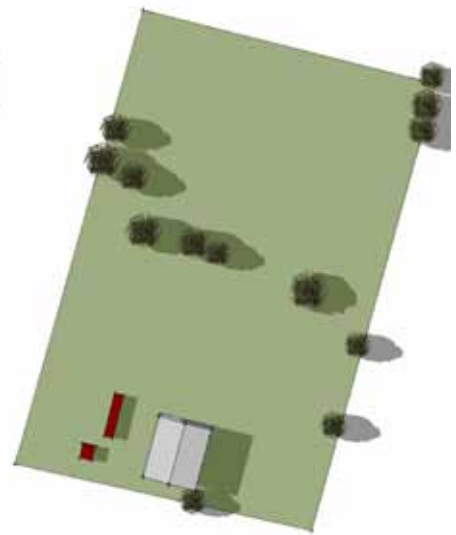
With the exception of shade from a few existing buildings and the large Live Oak trees, most of Richard Lee Park is exposed to full sun throughout the year. The primary solar issue is in siting sports play fields. For planning baseball, because the game is played during the spring and summer seasons, baseball fields should be oriented so that the batter faces away from the sun during afternoon and evening hours. Therefore the line from home plate through the pitcher's mound to second base should be aligned east-northeast. Football players are not affected as much by sun direction, but football fields are typically oriented north/south.



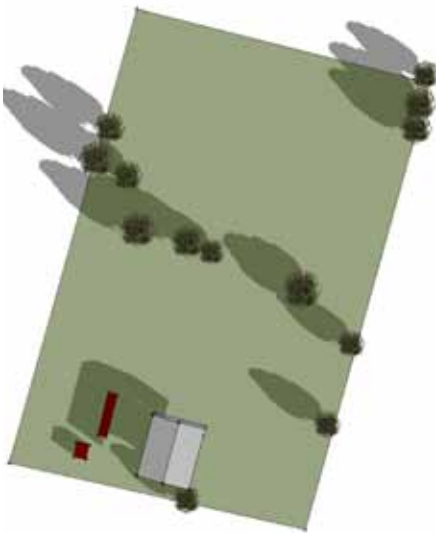
Summer - 8 a.m.



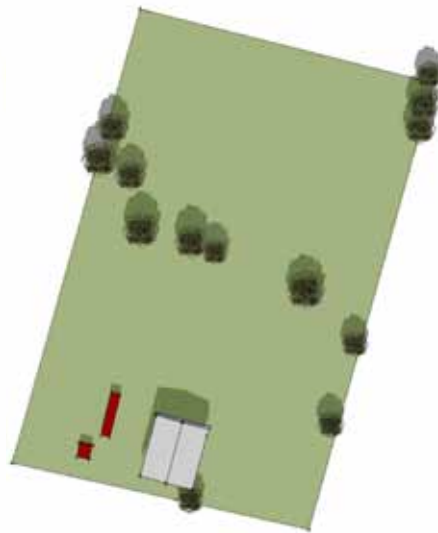
Summer - Noon



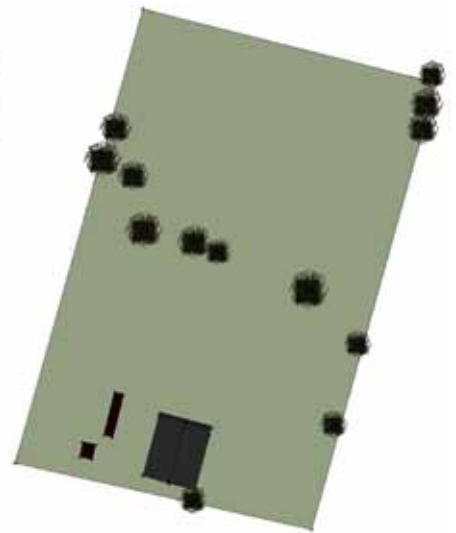
Summer - 5 p.m.



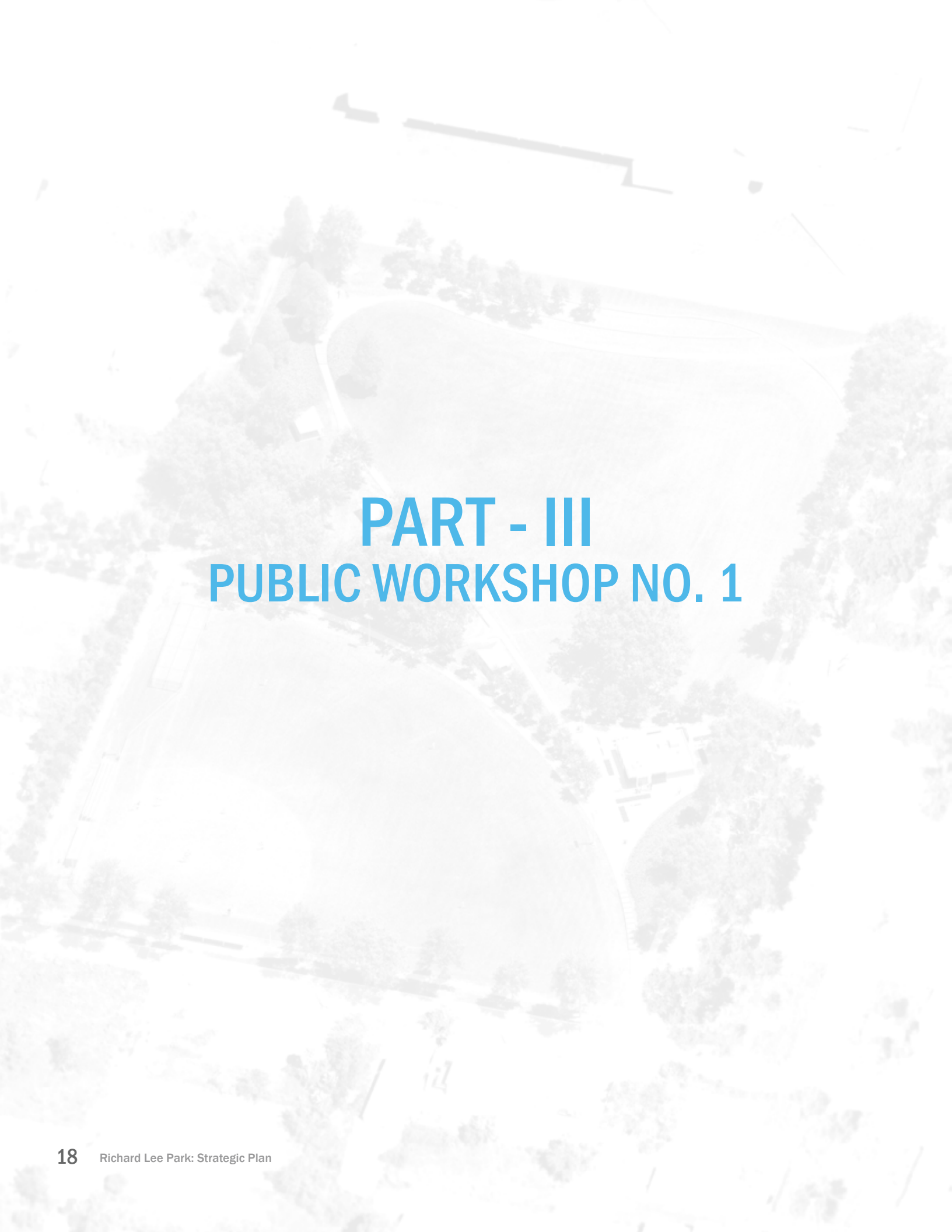
Winter - 8 a.m.



Winter - Noon



Winter - 5 p.m.

An aerial photograph of Richard Lee Park, showing a large, open grassy field in the center. The field is surrounded by a dense line of trees. To the right of the field, there is a small building with a white roof. The background shows a road and some other structures. The overall scene is a typical suburban park setting.

PART - III

PUBLIC WORKSHOP NO. 1

RICHARD LEE PARK: PUBLIC WORKSHOP NO. 1



Group Exercises

The first public workshop for Richard Lee Park was held on January 30, 2013 at the Trinity Lutheran Church on North Claiborne Avenue in the Lower Ninth Ward. The purpose of this public workshop was to involve the community in discussions about the park's assets, challenges, and potential programming elements.

Ray Bolling (Office of Neighborhood Engagement) began the meeting by introducing the project as a major park for the community. Other city officials present included Vincent Smith (Director of Capital Projects Administration), William Gilchrist (Director of Place-Based Planning), Haley Delery (Capital Projects Administration), Ernest Foster (NORDC), and Hayne Rainey (Mayor's Office).

The park project was introduced by Dana Brown, of Dana Brown & Associates (DBA), who discussed the park becoming a special place in the community. She presented the project plan and schedule, as well as an overview of the existing parks in the Lower Ninth Ward. When discussing the park's programming, Dana indicated that all of the recreational uses and facilities that the community wants might not be able to fit in the 8 acre park. Therefore, it is important to set priorities.

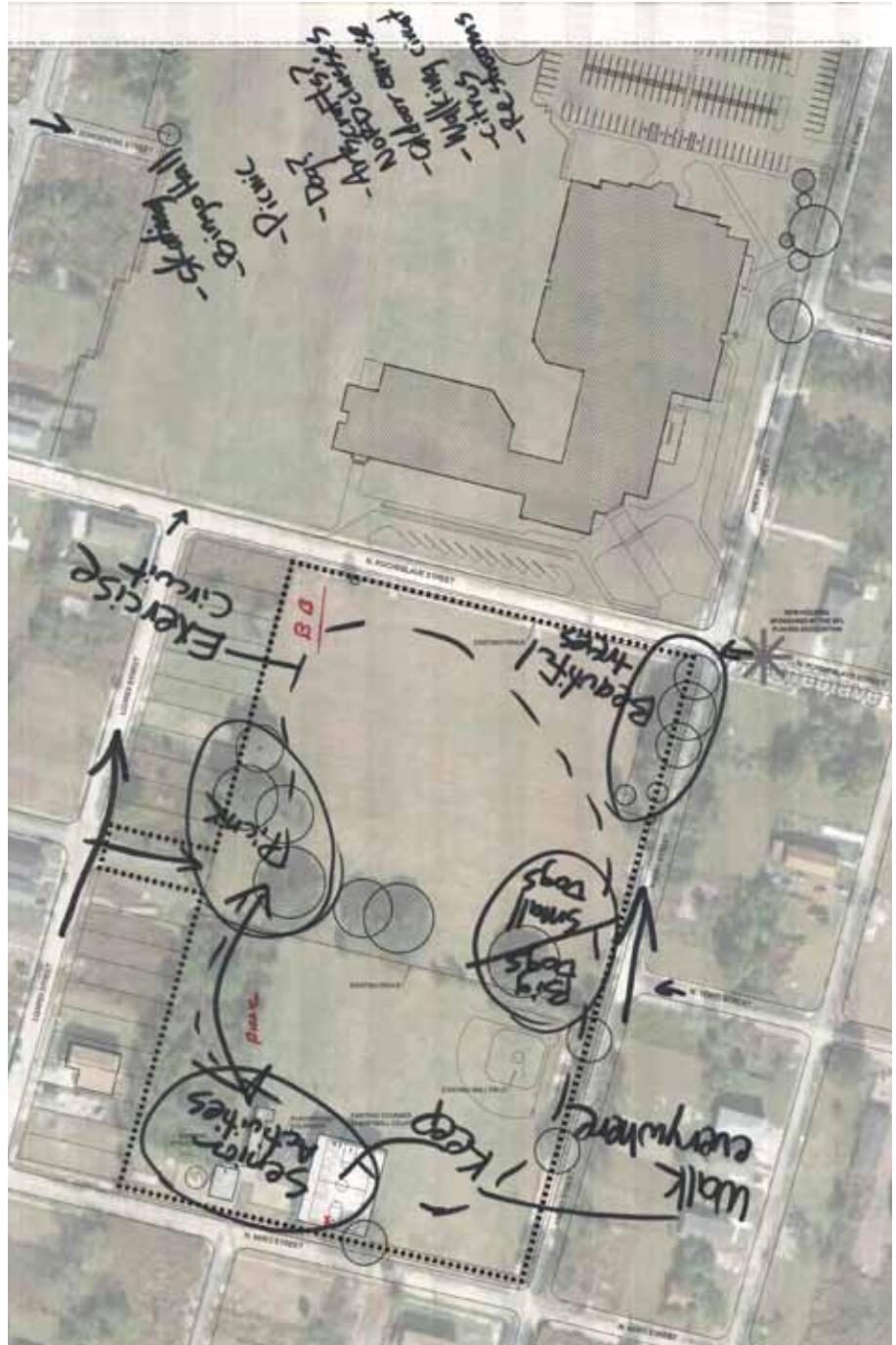
The attendees were then divided into four groups where they were asked to identify the location and types of assets and challenges in the area around the park. They were then asked to identify and draw program elements they would like to see in the park. City staff and the staff of DBA facilitated the group discussions. Following an hour of work, the groups were asked to gather back into one large group and present their ideas.

POTENTIAL RECREATIONAL USES & ELEMENTS: GROUP STUDIES

All drawings are oriented North. Writing on the drawings may be otherwise oriented. Repetitive program elements have been assigned colors. Other elements are in grey.

GROUP 1

- Basketball court (keep existing)
- Baseball field (full size)
- Building for activities
- Dog Park
- Exercise equipment
- Fruit and citrus trees
- Picnic area in shade
- Police protection
- Restrooms
- Senior activities
- Skating
- Walking trail

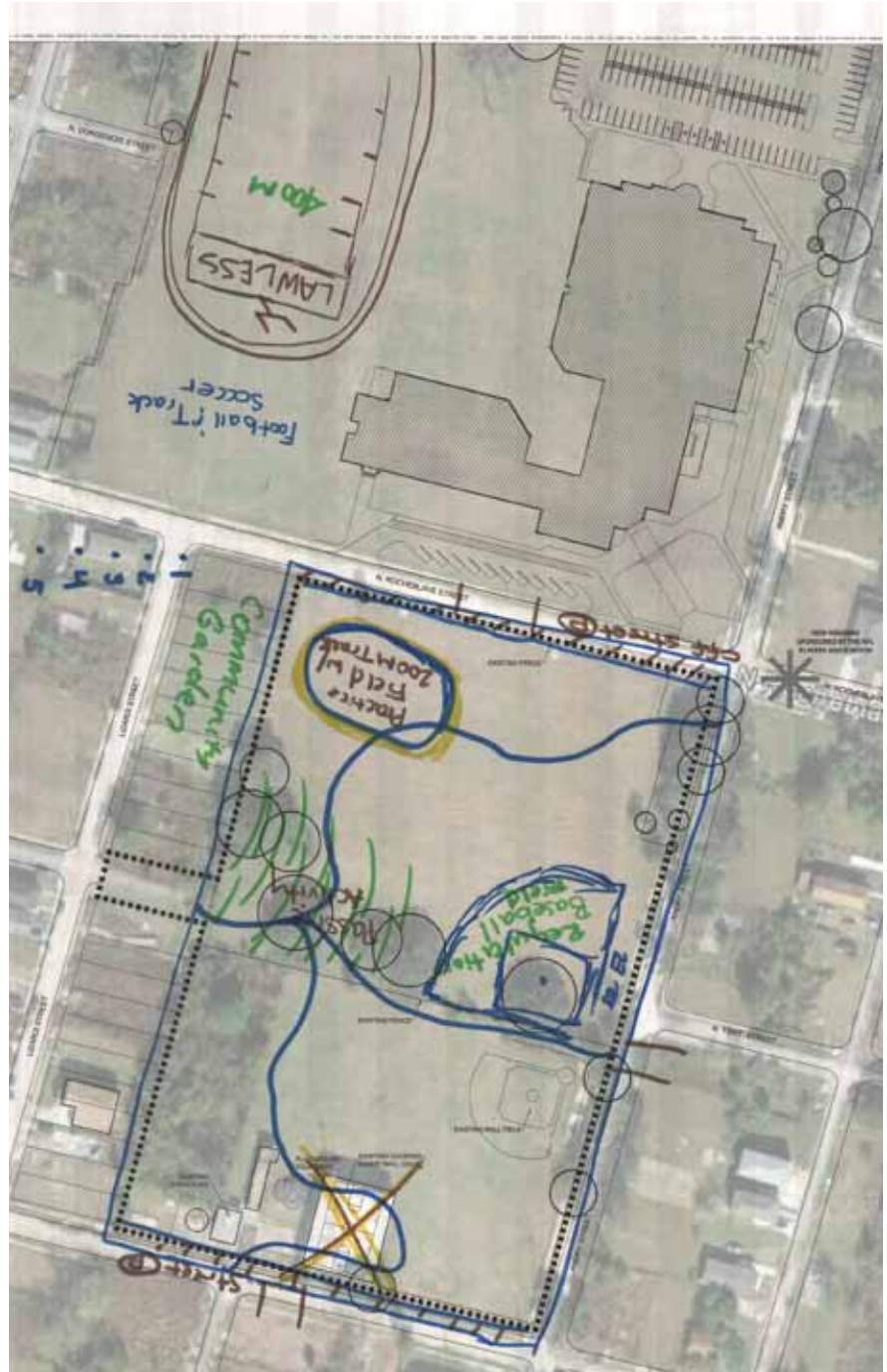


POTENTIAL RECREATIONAL USES & ELEMENTS: GROUP STUDIES

All drawings are oriented North. Writing on the drawings may be otherwise oriented. Repetitive program elements have been assigned colors. Other elements are in grey.

GROUP 2

- **Baseball field (full size)**
- Football (H.S. Site)
- Four access points into the park
- Overflow parking for school and major activities
- **Passive activities in shaded areas**
- Practice fields on the park site
- **Remove existing basketball courts**
- Track (H.S. Site)
- **Walking trail**

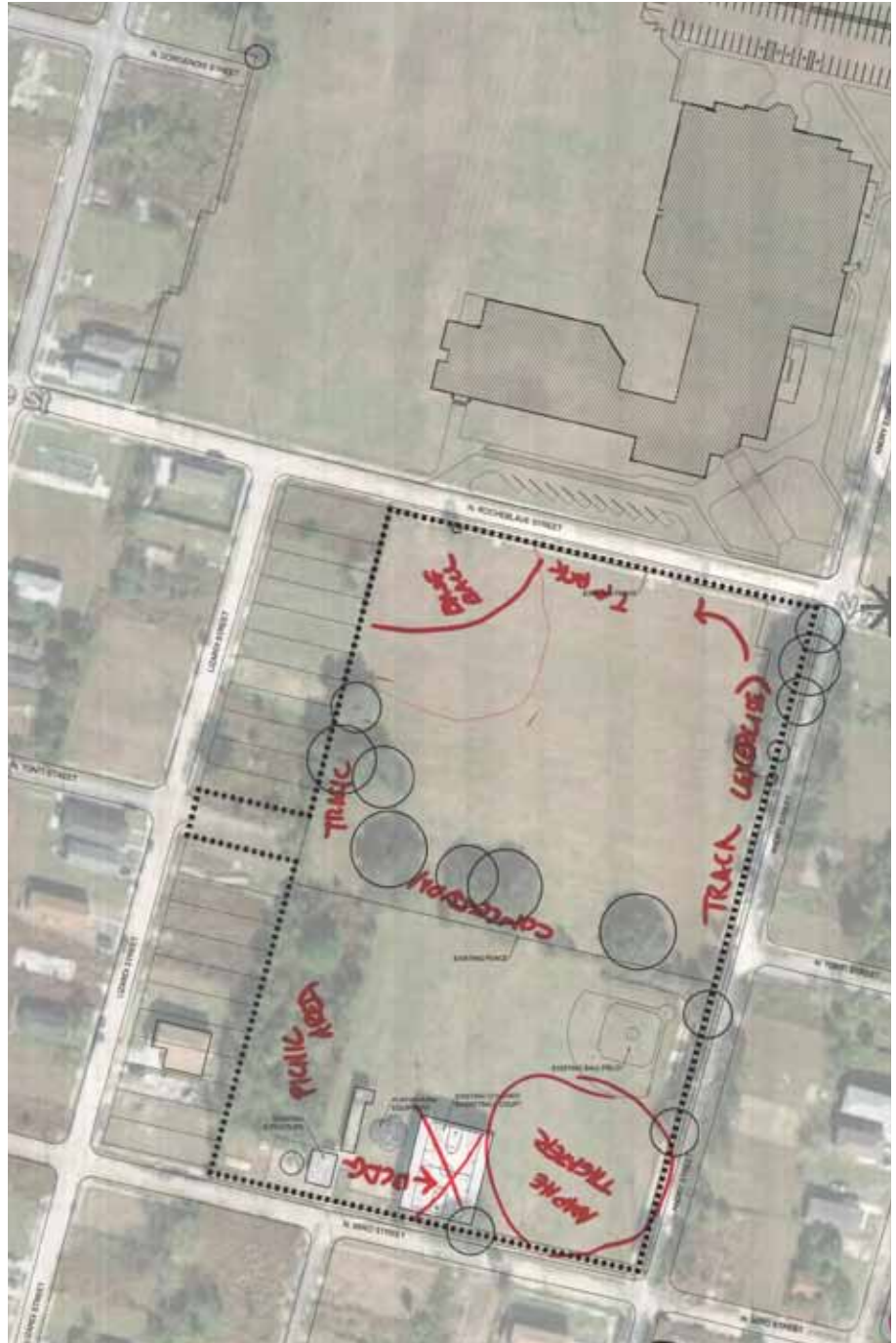


POTENTIAL RECREATIONAL USES & ELEMENTS: GROUP STUDIES

All drawings are oriented North. Writing on the drawings may be otherwise oriented. Repetitive program elements have been assigned colors. Other elements are in grey.

GROUP 3

- *Amphitheater*
- *Baseball field (full size)*
- *Building for activities*
- *Basketball taken out*
- *Concessions in the middle to serve both sides of the park*
- *Exercise equipment around trail*
- *Picnic areas in shade*
- *Skating*
- *Walking trail*

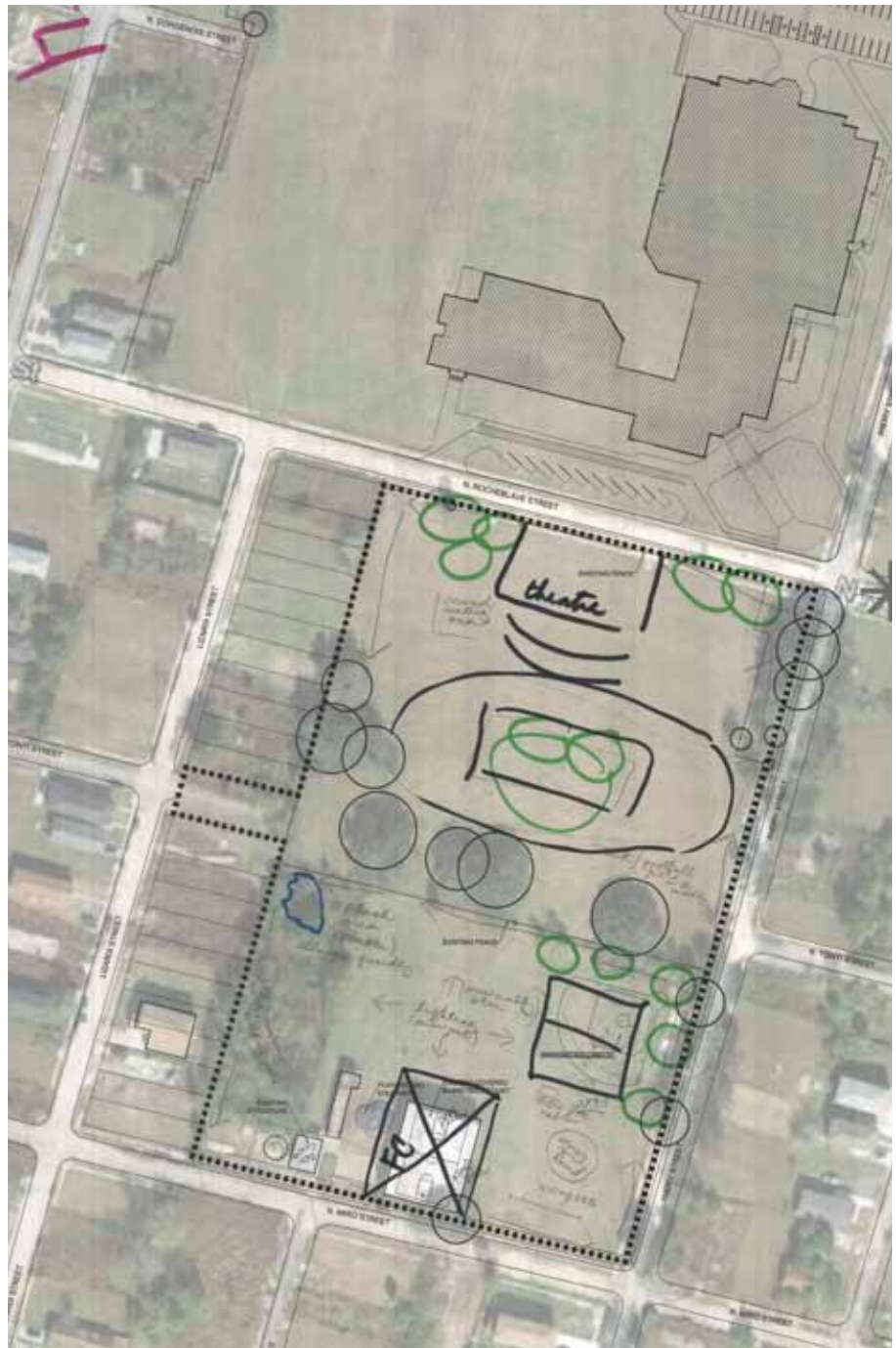


POTENTIAL RECREATIONAL USES & ELEMENTS: GROUP STUDIES

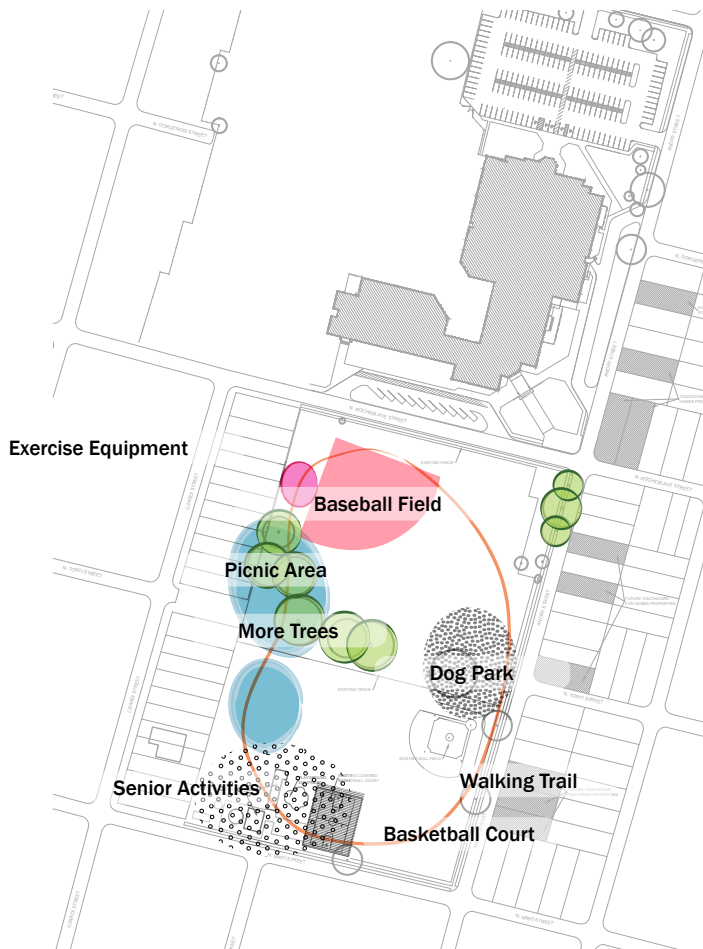
All drawings are oriented North. Writing on the drawings may be otherwise oriented. Repetitive program elements have been assigned colors. Other elements are in grey.

GROUP 4

- Amphitheater
- Benches and water fountains
- Fitness center with indoor pool and handball
- Football field (on site)
- More trees
- Picnic areas in shade
- Reuse concession stand
- Solar powered lighting
- Sprinklers and splash pad for kids
- Track (on site)



GROUP 1



Baseball Field (full size)

Building for activities

Picnic Area in shade

Fruit & Citrus Trees

Walking trail

Exercise Equipment

Basketball Court (keep existing)

Dog Park

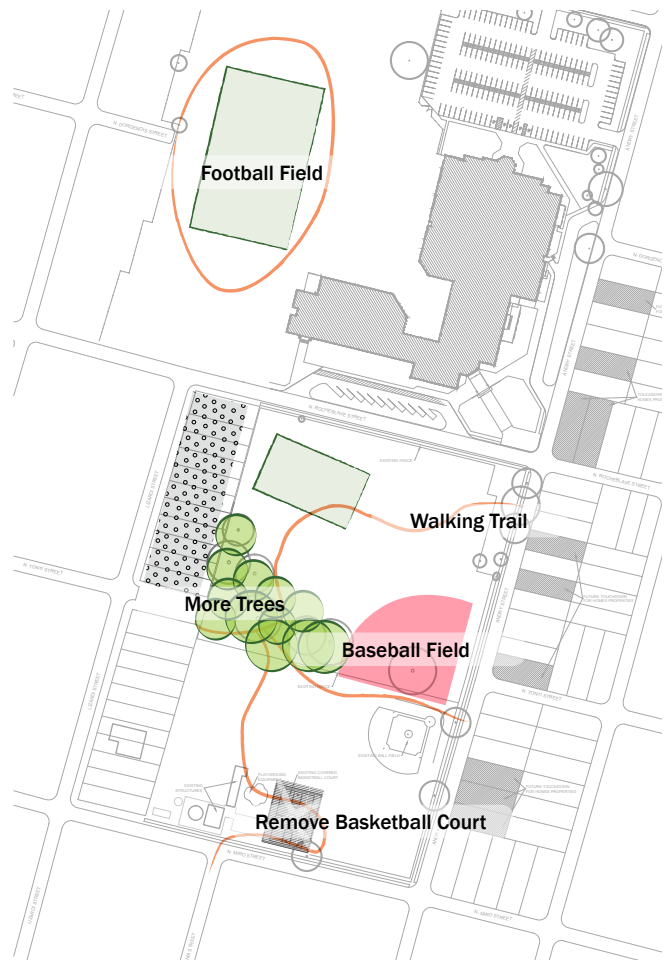
Police Protection

Restrooms

Senior Activities

Skating

GROUP 2



Baseball Field (full size)

Passive activities in shaded areas

Remove existing basketball courts

Walking trail

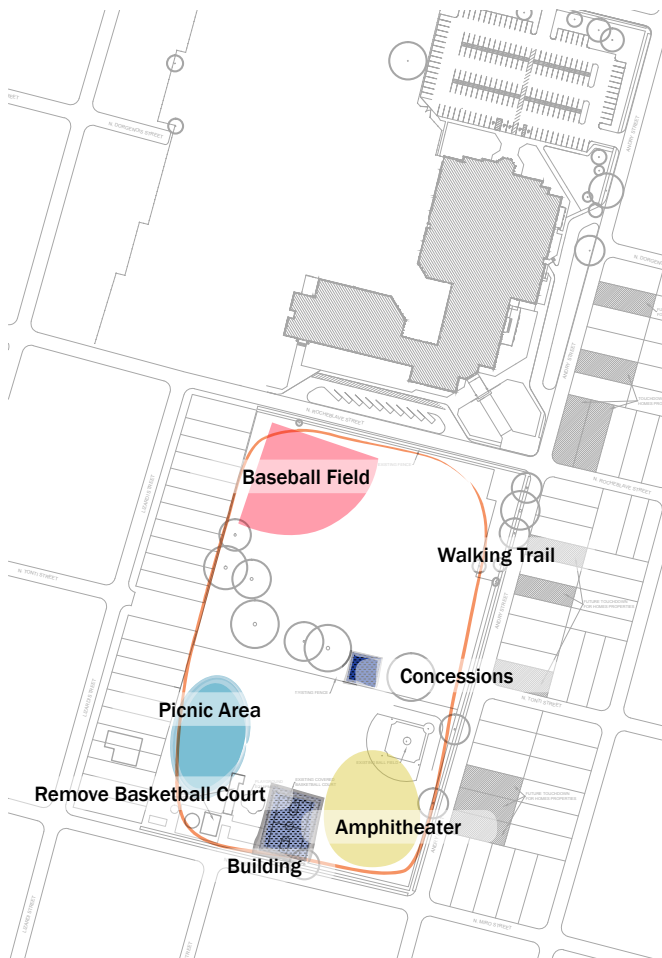
Football, Track, & Soccer located at H.S.

Four access points into the site

Overflow parking for school and major activities

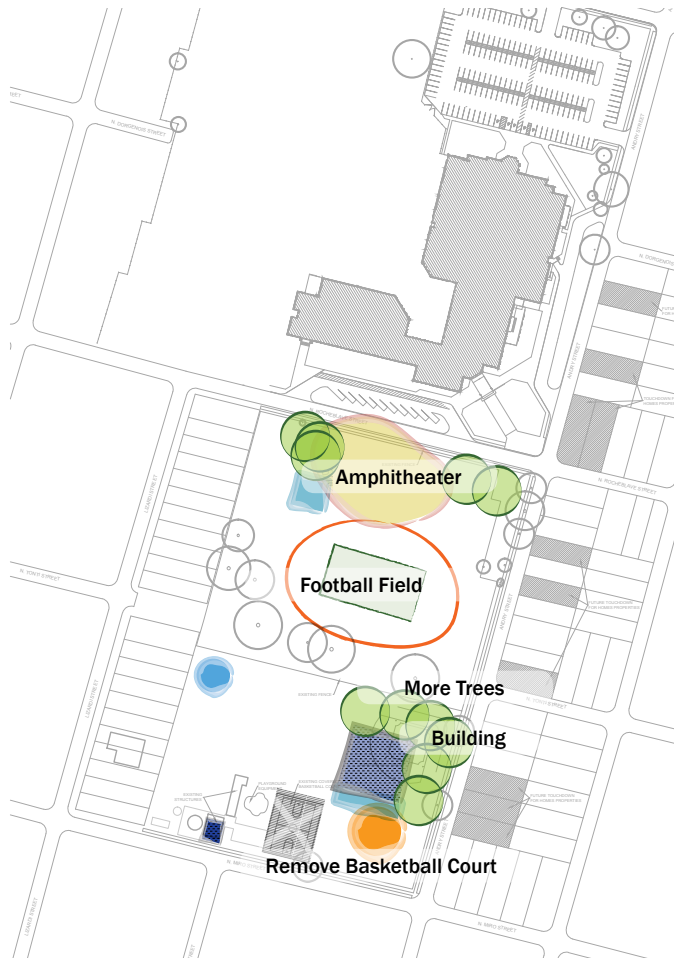
Practice fields on park site

GROUP 3



Baseball Field (full size)
 Building for activities
 Concessions in the middle of park
 Picnic Area in shade
 Walking trail
 Amphitheater
 Basketball taken out
 Exercise Equipment around trail
 Skating

GROUP 4



Reuse Concession structure
 Fitness Center with indoor pool and handball
 Picnic Area in shade
 Amphitheater
 More Trees
 Benches and Water Fountain
 Football Field and Track on park site
 Solar powered lighting
 Sprinklers and splash pad for kids

COMMONALITY OF PROGRAM WANTS:

After the public workshop, the team of Dana Brown & Associates compiled the information gathered from the community's participants to create an overlay of the consistent program elements. This diagram identifies the public's common elements and shows the placement of site features. The common program wants are broken down into three groups based on the number of groups that requested the same program elements.

LISTED IN 3 GROUPS

- *Baseball Field (full size)*
- *Building (concessions and events)*
- *Picnic Areas*
- *Trees (increase shade)*
- *Walking and Biking Trail*
- *Remove existing basketball*

LISTED IN 2 GROUPS

- Exercise Equipment
- Amphitheater
- Football Field

LISTED INDIVIDUALLY

- Basketball Court (keep existing)
- Benches & Water Fountain
- Dog Park
- Four Access Points to Park
- Overflow Parking
- Police Protection
- Practice Fields
- Restrooms
- Senior Activities
- Skating
- Solar Powered Lights
- Sprinklers & Splash Pads



FINDINGS:

During the group presentations, consistency on several park program elements was apparent. Most groups wanted to remove the current basketball courts and repurpose that area for other uses. Groups also tended to agree on the need for a full size baseball field, instead of the existing one that is sized for little league play. The groups also were consistent on the idea of a football field and a running track in the area. They debated whether it should be on the school site or on the park site, a discussion based on concern that the School Board may never build the sports fields at the school. Other items of consensus are walking/running trails, a building for classes, more trees, shaded picnic areas, and an amphitheater.

PUBLIC WORKSHOP ATTENDEES:

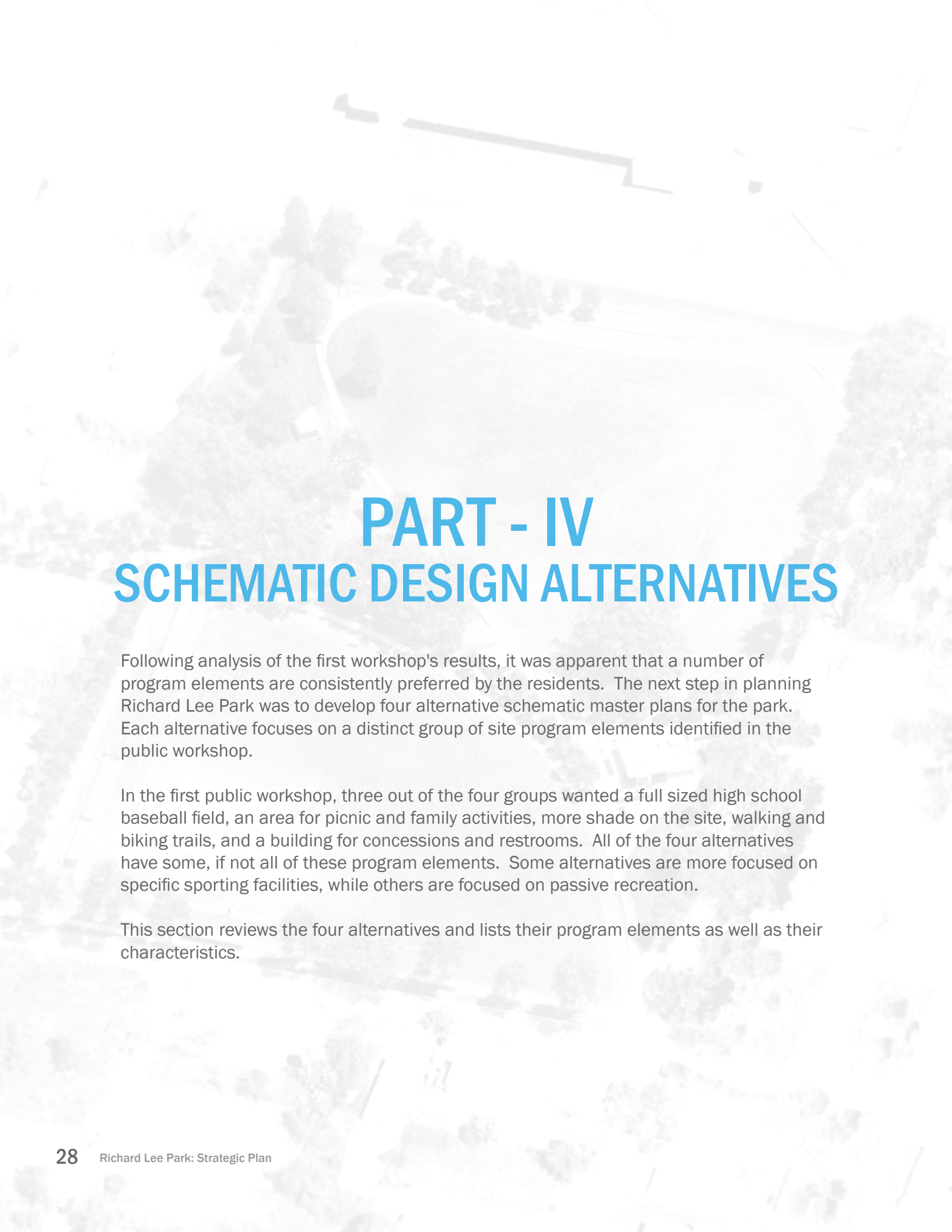
Lower 9th Ward Residents	
Calvin Hamilton	
Elizabeth Joslie	
Mary Lochett	
Henrietta Mamual	
Lower 9th Ward Community Representatives	
Rev. Willie Calhoun	A Community Voice
Vanessa Gueringer	A Community Voice
Marie Hurt	A Community Voice
H.L. Irwin	LNNC
Linda Jackson	Lower 9th ward HOA
W.M. Lynch	Sam Bonart Park
Bernard Merricks	A Community Voice
Thos Pepper	Common Ground Relief
Citywide Community group Representatives	
Catherine Hayword	Tulane's PRC
City Officials	
Ray Bolling	City of New Orleans
Haley Delery	Capital Projects
William Gilchrist	City of New Orleans
Vincent Smith	Capital Projects

University of New Orleans	
Brittany Arceneaux	
Scarlet Berckes	
Eric Bettis	
Avery Cootes	
Nathan Grace	
John Green	
Tricia Keffer	
Brad Klamer	
Jacky Mouton	
Earthea Nance	
Akul Nishawala	
Adarkan Pike	
Manyvan Smith	
Cassie Smith	
Architects	
Dana Brown	Dana Brown & Associates
Danielle Duhe	Dana Brown & Associates
Bridget Kender	Dana Brown & Associates
Justin Lemoine	Dana Brown & Associates
Jon Seibert	STB Architects



Groups present their drawings





PART - IV

SCHEMATIC DESIGN ALTERNATIVES

Following analysis of the first workshop's results, it was apparent that a number of program elements are consistently preferred by the residents. The next step in planning Richard Lee Park was to develop four alternative schematic master plans for the park. Each alternative focuses on a distinct group of site program elements identified in the public workshop.

In the first public workshop, three out of the four groups wanted a full sized high school baseball field, an area for picnic and family activities, more shade on the site, walking and biking trails, and a building for concessions and restrooms. All of the four alternatives have some, if not all of these program elements. Some alternatives are more focused on specific sporting facilities, while others are focused on passive recreation.

This section reviews the four alternatives and lists their program elements as well as their characteristics.

SCHEMATIC DESIGN: BASEBALL ALTERNATIVE

This design alternative centers around a baseball field, but also offers highly shaded areas, entry plazas at intersections, areas for passive play, pedestrian trails, and on-site parking. The baseball field is high school regulation size with 90 feet between bases, 60' 6" from home plate to the pitcher's mound, and 320' feet from home plate to the outfield line. The field also has bleachers for approximately 170 people, high mast lighting, separated dug outs, and a bull pen. It is designed to be used mostly by the new high school but can also accommodate neighborhood leagues.

ELEMENTS INCLUDED

- *Baseball Field*
- *Picnic Pavilions*
- *Facility: concessions, restrooms, and storage*
- *Stormwater Management*
- *Open lawn: passive play*
- *Parking: 12 spots on site*
- *Multi-use Trails: walking, running, biking*



SCHEMATIC DESIGN: FOOTBALL & TRACK ALTERNATIVE

This design alternative centers on a full size football field with an eight lane 400 meter track around it. It offers bleacher seating that can accommodate approximately 1,900 people with a protective fence around the field and track. The park site also features three picnic pavilions, shaded areas, limited pedestrian trails, entry plazas at the intersections, and on-site parking. The entry plaza on the corner of Andry and Miro Streets is designed to be skateboard-friendly.

ELEMENTS INCLUDED

- Football Field & Track
- Picnic Pavilions
- Facility: concessions, restrooms, and storage
- Stormwater Management
- Parking: 29 spots on site
- Multiuse Trails: walking, running, biking



SCHEMATIC DESIGN: PASSIVE NO. 1 ALTERNATIVE

This alternative consists of two large open lawns that can be used for sports practice or passive play. The trees in this alternative are placed 10 yards apart along the perimeter of the open lawn near N. Rocheblave St. to help guide practices. Stormwater elements around the park site help reduce on-site flooding, improve water quality, and facilitate groundwater infiltration. Other park elements include, four picnic pavilions that can accommodate between 15 and 25 people at each, shaded areas, internal pedestrian trails, entry plazas at intersections, on-site parking, and skateboard-friendly plazas.

ELEMENTS INCLUDED

- *Open Lawns: practice fields and passive play*
- *Picnic Pavilions*
- *Facility: concessions, restrooms, and storage*
- *Stormwater Management*
- *Parking: 22 spots on site*
- *Multiuse Trails: walking, running, biking*



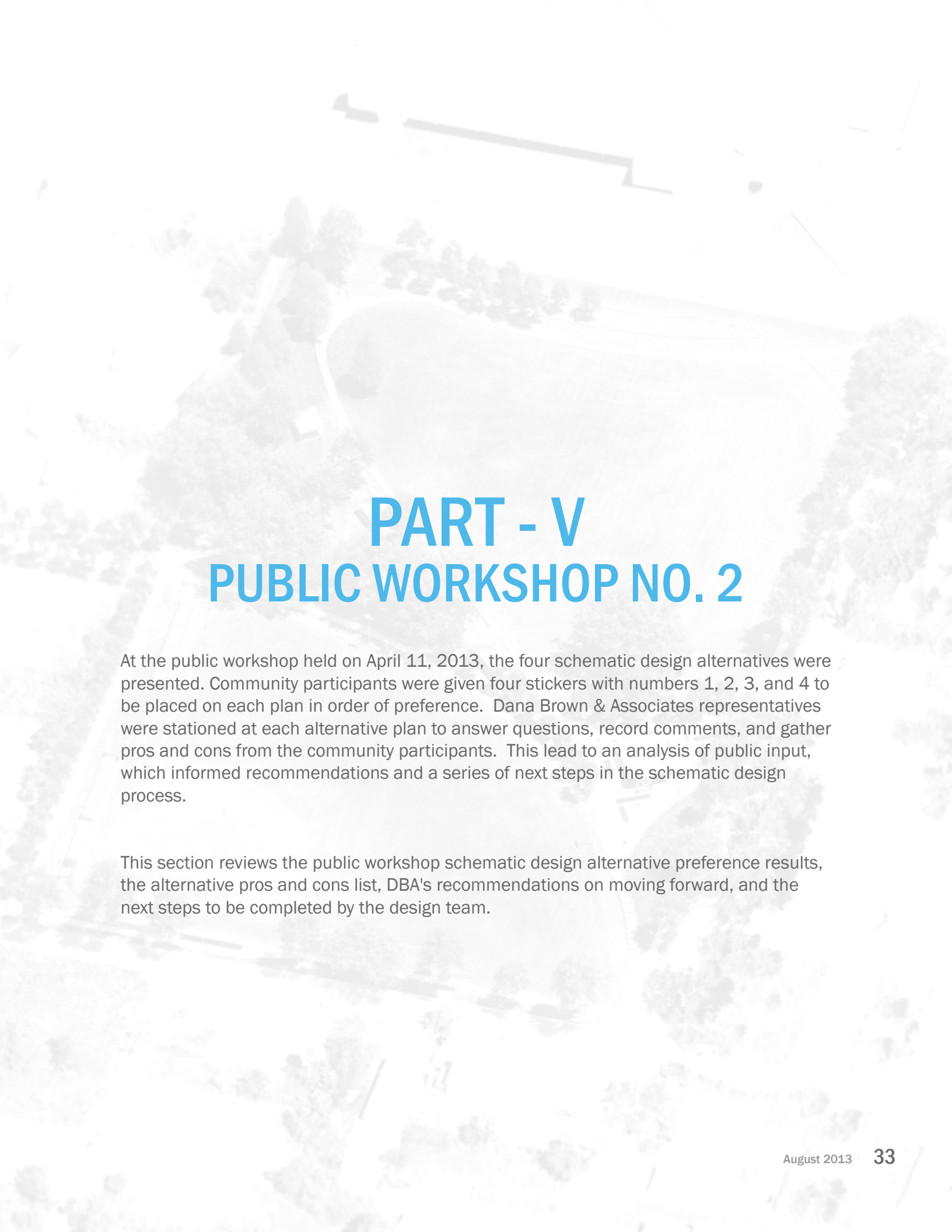
SCHEMATIC DESIGN: PASSIVE NO. 2 ALTERNATIVE

This alternative focuses around a large open lawn that is designed to accommodate sports practice. Other key park elements are four picnic pavilions, shaded areas, geometric internal pedestrian trails, entry plazas at intersections, on-site parking, and a skateboard-friendly plaza around the central building. Stormwater management features around the park site help reduce on-site flooding, improve water quality, and facilitate groundwater infiltration.

ELEMENTS INCLUDED

- Open Lawns: practice fields and passive play
- Picnic Pavilions
- Facility: concessions, restrooms, and storage
- Stormwater Management
- Parking: 12 spots on site
- Multiuse Trails: walking, running, biking





PART - V

PUBLIC WORKSHOP NO. 2

At the public workshop held on April 11, 2013, the four schematic design alternatives were presented. Community participants were given four stickers with numbers 1, 2, 3, and 4 to be placed on each plan in order of preference. Dana Brown & Associates representatives were stationed at each alternative plan to answer questions, record comments, and gather pros and cons from the community participants. This led to an analysis of public input, which informed recommendations and a series of next steps in the schematic design process.

This section reviews the public workshop schematic design alternative preference results, the alternative pros and cons list, DBA's recommendations on moving forward, and the next steps to be completed by the design team.

PUBLIC WORKSHOP NO. 2: RESULTS

The results gathered from the community preference exercise show that the Passive Park Option No. 2 received 53% of the first place stickers, followed by the Football and Track Option with 33%, then Passive Option No. 1 with 21%, and the Baseball option with 15%. A design team member was present at each station for each alternative, gathering pros and cons as well as general comments.

Votes	Baseball Alternative		Football & Track Alternative		Passive No. 1 Alternative		Passive No. 2 Alternative	
First	2	15%	5	33%	3	21%	8	53%
Second	2	15%	4	27%	3	21%	3	20%
Third	3	23%	3	20%	4	29%	2	13%
Fourth	6	46%	3	20%	4	29%	2	13%
Total Votes	13		15		14		15	

Preference results of alternative plans

Baseball Alternative		Football & Track Alternative		Passive No. 1 Alternative		Passive No. 2 Alternative	
Pros	Cons	Pros	Cons	Pros	Cons	Pros	Cons
Walking Trails	Too many trees in picnic area	Bring other schools to L9W	Whole park is just football	Walking and Running	No football	Trail layout	No building for program
Not enough baseball available to H.S.	Baseball takes up too much space	Benefits H.S. kids & neighborhood	Football should go on school site	Skating for the youth	Not large enough open space	BBQ pits by the picnic pavilions	Small dedicated area for younger children
Nice Space	Limited	Pride		Exercise			No sports field
Picnic	No football	Track, field & football		Building			

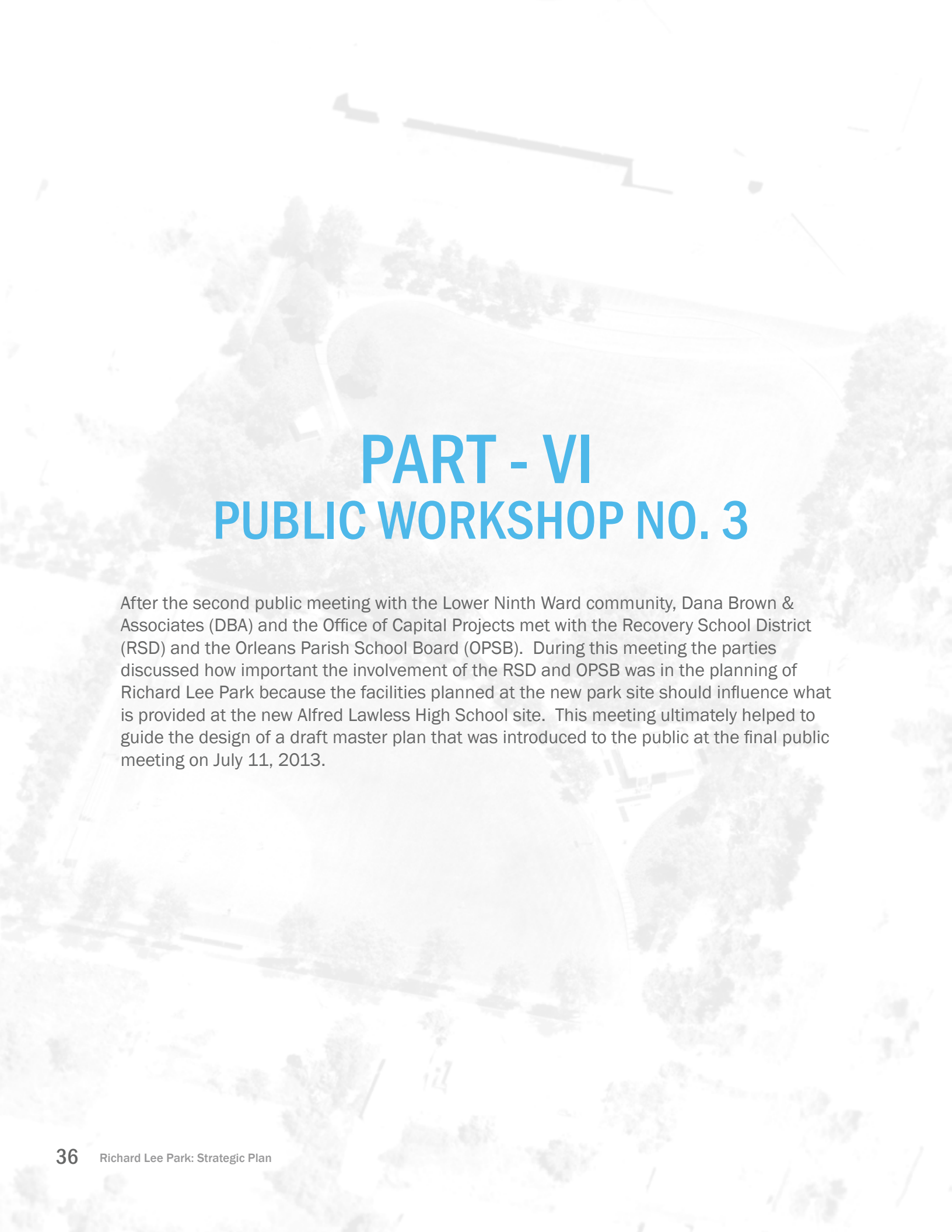
Pros and cons of alternative plans

PUBLIC WORKSHOP NO. 2: RECOMMENDATIONS

After reviewing the public workshop results, DBA recommended that another alternative be designed that focuses on a flexible green space that accommodates multiple field sports, rather than dedicated fields. Because the preferences of attendees at the two workshops conflict with each other, a modified approach was warranted. This concept would meet most of the expectations of most of the participants at both workshops by providing more flexible open spaces. This multipurpose field would be highly engineered and designed to withstand frequent use for sports, such as baseball, football and soccer, and more passive recreation all year round. Components of that design would include irrigation, stormwater management, as well as specialized turf and soil.

Lower 9th Ward Residents	
Lawrence Copel	
Enla DeJean	
Movicker Field	
Bobbie McGee	
James McGee	
Verga Fortenberry	
Lower 9th Ward Community Representatives	
Beth Butler	A Community Voice
Rev. Willie Calhoun	A Community Voice
Eliza Eugene	Touchdown for Homes
Linda Jackson	Lower 9th ward HOA
Bernard Merricks	A Community Voice
Rev. Joel W. Tyler	Second Rose of Sharon
Thos Pepper	Common Ground Relief
City Officials	
Ray Bolling	City of New Orleans
Michael D. Darnell	NORDC
Haley Delery	Capital Projects
Mary Fontenot	District E
Hayne Rainey	Mayor's office
Victor Richard	NORDC
Vincent Smith	Capital Projects
Landscape Architects	
Chris Africh	Dana Brown & Associates
Dana Brown	Dana Brown & Associates
Danielle Duhe	Dana Brown & Associates
Bridget Kender	Dana Brown & Associates

Attendees

An aerial photograph of Richard Lee Park, showing a large, irregularly shaped green space with a winding path, surrounded by trees and some buildings in the background. The image is faded and serves as a background for the text.

PART - VI

PUBLIC WORKSHOP NO. 3

After the second public meeting with the Lower Ninth Ward community, Dana Brown & Associates (DBA) and the Office of Capital Projects met with the Recovery School District (RSD) and the Orleans Parish School Board (OPSB). During this meeting the parties discussed how important the involvement of the RSD and OPSB was in the planning of Richard Lee Park because the facilities planned at the new park site should influence what is provided at the new Alfred Lawless High School site. This meeting ultimately helped to guide the design of a draft master plan that was introduced to the public at the final public meeting on July 11, 2013.

RICHARD LEE PARK: PROGRAM WORKSHOP NO. 3

This public workshop allowed DBA to review the project to date and inform the community of the voting results from Public Workshop No. 2. The alternative that received the most first place votes (Passive Alternative No. 2) was focused around passive activity while incorporating a practice sports field area. At the meeting with the RSD and OPSB, they agreed to provide a graded and grass-seeded football field on the school site to be used for practice. Doing so allowed a better balance in Richard Lee Park between sports fields for team use and other open space for use by all the residents of the Lower Ninth Ward. This also established that the community's needs and the high school's needs for the park is equitable.

Given the commitment of the RSD and OPSB to utilize the green space on the high school site for football practice, DBA designed the park to best accommodate the remaining needs of the community.



Community members engaged in discussion about the park master plan

RICHARD LEE PARK: MASTER PLAN

The master plan is based on the needs of the community that are not being met in parks elsewhere in the Lower Ninth Ward. The baseball field is a fully functional, LHSAA regulation field that is highly engineered to withstand heavy use and drain quickly after storm events. Three large picnic pavilions in the center of the park can accommodate large families. A new 2,500 square foot building containing restrooms, concessions, and equipment storage lies in a skate board friendly plaza designed to withstand heavy use. Two bioswales in the park to manage the site's stormwater and paved trails throughout the park accommodate pedestrians. A terraced lawn along N. Rocheblave Street accommodates pedestrian overflow from the school and can be used for events, while creating an area for shaded seating.



RICHARD LEE PARK: PERSPECTIVES



Perspective looking southwest from the corner of N. Rocheblave St. & Andry St. Note the gentle grassed terraces on the right and the picnic pavilions in the middle of the image.



Perspective looking northeast from the middle of the picnic pavilion towards the terraced seating. Note the pavilion under the tree on the left and the terraces in the background of the image.

RICHARD LEE PARK: NODES AND PLAZAS

The design of Richard Lee Park creates a variety of different spaces and conditions that flow along paths that bifurcate and define large open, grassed fields: the more structured baseball field in the southwest part of the site which contrasts with the open field, sloped lawn, and grassed terraces in the northeast part of the site. Four entry plazas and the main plaza around the multi-use park building are designed to accommodate a number of people in more formal seating areas. Shaded picnic areas and small lawn areas are tucked in between paths and trees, creating outdoor alcoves. These features combine in the master plan to create a distinct identity, visual quality, and user experience for the Lower Ninth Ward.



RICHARD LEE PARK: STORMWATER MANAGEMENT

Water management of the site is important for the functionality of the baseball field. This field is designed to drain quickly so that play may resume as soon as possible after a rain storm. Stormwater runoff is directed into rain gardens at the low areas of the site, filtering pollutants out and reducing the amount of water entering the drainage system. The stormwater management rain gardens feature native plants that require minimal maintenance and provide seasonal color variety.



PART - VII

FINAL MASTER PLAN

After the public workshop on July 11, 2013, DBA provided boards of the master plan to be on display in the community center for comment. The comments were gathered after an "A Community Voice" neighborhood meeting on August 8, 2013. All comments were unanimously positive for the park's new design and residents were eager to have the construction process begin. These comments and those taken at the final public workshop show the involvement of the community through the entire park planning process.

Master Plan Comments: August 8, 2013	
Burnell Cotton	I think this is great
Verga Fortenberry	We love it
Joyce Jackson	Love it; will walk
Berry L. Reynolds	I think this looks great
Marlene Pete	I like most of the design. I hope every aspect will be furnished completely.
Janet Tobes	Great. Let's get started
Vanessa Gueringer	Great format

RICHARD LEE PARK
STRATEGIC PLAN

Labels on the map include:

- CROSSWALK
- SEATWALL
- OUTDOOR SEATING PLAZA AREA
- BIORETENTION CELL
- FOOT BRIDGE
- TERRACES
- 18" HIGH BAND
- 12" HIGH BAND
- 6" HIGH BAND
- NORTH ROCHEBLAVE STREET
- FREE PLAY FIELD
- GENTLY SLOPED
- PAVILION
- OUTDOOR SEATING
- BULL PEN
- HIGH MAST LIGHTING
- SEATWALL
- BASEBALL FIELD
- MEN'S HIGH SCHOOL REGULATION
- BLEACHERS
- DUGOUT
- OUTDOOR SEATING
- 2,500 SQ. FT. BUILDING
- RETENTION PLANTERS
- SKATEABLE PLAZA
- SEATWALL
- BIORETENTION CELL
- FOOT BRIDGE
- CROSSWALKS
- NORTH MIRO STREET

FINAL MASTER PLAN: DETAIL AREAS

The new Richard Lee Park design creates a vibrant space for the Lower Ninth Ward community and soon-to-be-built Alfred Lawless High School. The park takes on an important role for the community as a space that provides equal opportunities for active and passive recreation in response to the abundance of actively programmed parks in the surrounding area. This new space allows for passive activities that serve all age groups while also serving the needs of the new high school with a LHSA regulation sized baseball field. The field benefits both the community and the school because it will accomodate many activities of local residents, as well as attrack regional high school baseball games. The park was specifically designed for all ages within the Lower Ninth Ward and will grow as an important asset that provides recreational space and offers a distinctive identity for the Lower Ninth Ward.



Regulation high school baseball field

FINAL MASTER PLAN: DEATIL AREAS



Improved crosswalks



Improved drainage and water detention



New structure and skateable plaza



Terraced seating



Small gathering plaza



Large pavilion 1



Large pavilion 2



Large pavilion 3



Small gathering plaza



Bullpen



New dugout and bleachers

RICHARD LEE PARK: OPINION OF PROBABLE COST

	ITEM DESCRIPTION	QTY.	UNIT	ITEM COST	TOTAL COST
DIVISION 01	EXISTING CONDITIONS				
	SURVEYS				
	Site Survey	1	Each	\$ 5,000.00	\$ 5,000.00
	DEMOLITION				
	Tree Protective Fencing	260	LF	\$ 16.00	\$ 4,160.00
	Structure Removal	2	Each	\$ 3,000.00	\$ 6,000.00
	Basketball Court and Structure Removal	1	Each	\$ 4,000.00	\$ 4,000.00
	Concrete Removal	15,200	Sq. Ft.	\$ 2.00	\$ 30,400.00
	Fence Removal	2,800	LF	\$ 4.00	\$ 11,200.00
	Light Pole Removal	6	Each	\$ 2,500.00	\$ 15,000.00
	Adjust Sewer/Manhole	2	Each	\$ 2,000.00	\$ 4,000.00
	Relocate Utility Box	1	Each	\$ 2,500.00	\$ 2,500.00
	Playground Equipment Removal	1	Each	\$ 3,000.00	\$ 3,000.00
					\$ 85,260.00
DIVISION 02	EARTHWORK				
	SITE CLEARING				
	Tree and Shrub Removal				
	Overgrowth Area Removal	36,000	Sq. Ft.	\$ 4.00	\$ 144,000.00
	Tree and Stump Removal	5	Each	\$ 600.00	\$ 3,000.00
	EARTH MOVING				
	Soil Hauling: terraces	350	Cb. Yd.	\$ 18.00	\$ 6,300.00
	Soil Hauling: sloped lawn	1,375	Cb. Yd.	\$ 18.00	\$ 24,750.00
	Rough Grading	39,000	Sq. Yd.	\$ 2.00	\$ 78,000.00
	Fine Grading	12,350	Sq. Yd.	\$ 5.00	\$ 61,750.00
					\$ 317,800.00
DIVISION 03	EXTERIOR IMPROVEMENTS				
	BASES, BALLASTS, and PAVING				
	Rigid Paving				
	Concrete Paving: 5' wide	4,250	Sq. Ft.	\$ 5.00	\$ 21,250.00
	Concrete Paving: 6' wide	18,000	Sq. Ft.	\$ 5.00	\$ 90,000.00
	Concrete Paving: 8' wide	3,600	Sq. Ft.	\$ 5.00	\$ 18,000.00
	Concrete Paving: 10' wide	1,300	Sq. Ft.	\$ 5.00	\$ 6,500.00
	Scoring Lines	4,450	LF	\$ 0.50	\$ 2,225.00
	Terrace Edging: 6"	450	LF	\$ 50.00	\$ 22,500.00
	Seat walls: 18"	325	LF	\$ 125.00	\$ 40,625.00
	Pavers	1,500	Sq. Yd.	\$ 45.00	\$ 67,500.00
	Concrete Pad for Picnic Pavilions	1,425	Sq. Ft.	\$ 8.00	\$ 11,400.00
	SITE IMPROVEMENTS				
	Signage				
	Site Signage				\$ 100,000.00
	Entry Signage	4	Each	\$ 15,000.00	\$ 60,000.00
	Fences and Gates				
	Ornamental Fencing	250	LF	\$ 125.00	\$ 31,250.00
	Chain Link Fencing	700	LF	\$ 25.00	\$ 17,500.00
	STORMWATER MANAGEMENT				
	Stormwater Management				
	Bioswale Plantings	10,000	Sq. Ft.	\$ 10.00	\$ 100,000.00

RICHARD LEE PARK: OPINION OF PROBABLE COST

PLANTING					
Planting Preparation					
Tree Well Soil Mix	85 Each	\$	45.00	\$	3,825.00
Top Dress Mulch	14,750 Sq. Yd.	\$	5.00	\$	73,750.00
Turf and Grasses					
Hydro-seeding	2.5 Acres	\$	4,000.00	\$	10,000.00
Plants					
Large Street Trees	20 Each	\$	500.00	\$	10,000.00
Medium Shade Trees	35 Each	\$	300.00	\$	10,500.00
Small Border Trees	30 Each	\$	200.00	\$	6,000.00
				\$	702,825.00
DIVISION 04 SPORTS FACILITY					
BASEBALL FIELD					
Fine Grading	9,000 Sq. Yd.	\$	5.00	\$	45,000.00
Irrigation Controller	1 Each	\$	1,500.00	\$	1,500.00
Irrigation System	29,300 Sq. Ft.	\$	0.50	\$	14,650.00
Reinforced Lawn	97,000 Sq. Ft.	\$	5.00	\$	485,000.00
Underdrainage for field	29,300 Sq. Ft.	\$	3.50	\$	102,550.00
Field Layout System	1 Each	\$	400.00	\$	400.00
Bleachers	4 Each	\$	5,000.00	\$	20,000.00
Bullpen Mat	1 Each	\$	1,000.00	\$	1,000.00
Portable Pitching Mound	2 Each	\$	3,500.00	\$	7,000.00
Portable Bases	1 Set	\$	400.00	\$	400.00
Portable Baseball Batting Cage Backer	1 Each	\$	6,000.00	\$	6,000.00
Portable Scoreboard	1 Each	\$	2,000.00	\$	2,000.00
Dry Field Line Marker	1 Each	\$	500.00	\$	500.00
High Mast Lighting	7 Each	\$	10,000.00	\$	70,000.00
Fencing	800 LF	\$	40.00	\$	32,000.00
				\$	788,000.00
DIVISION 05 BUILDING					
Square Feet	2,500 Sq. Ft.	\$	250.00	\$	625,000.00
				\$	625,000.00
DIVISION 06 FURNISHINGS					
SITE FURNISHINGS					
Bicycle Racks	10 Each	\$	500.00	\$	5,000.00
Trash and Litter Receptors	20 Each	\$	400.00	\$	8,000.00
Picnic Pavilions	3 Each	\$	20,000.00	\$	60,000.00
Picnic Tables	3 Each	\$	3,000.00	\$	9,000.00
Benches	20 Each	\$	1,500.00	\$	30,000.00
				\$	112,000.00
DIVISION 07 ELECTRICAL					
LIGHTING					
Exterior Lighting					
Landscape Bollard Lights	360 Each	\$	600.00	\$	216,000.00
				\$	216,000.00
MATERIALS & CONSTRUCTION				\$	2,846,885.00
CONTRACTOR FEE				25% \$	711,721.25
DESIGNER FEE				10% \$	284,688.50
CONTINGENCY				30% \$	854,065.50
TOTAL COST				\$	4,697,360.25

PUBLIC WORKSHOP COMMENTS & ATTENDEES

Public Workshop No. 3 attendees: July 11, 2013	
Lower 9th Ward Residents	
Ester Dumar	
Maybelle Fernandez	
Acqueline Henley	
Joyce Jackson	
Charles LePope Jr.	
Elizabeth Leslie	
Mary Lochett	
James Mack	
Joseph Mack	
Vera McFadden	
John Mullens	
Valeria Schexnayder	
Linda Smith	
Pamela Smith	
SJ Thomas Jr.	
Lower 9th Ward Community Representatives	
Rev. Willie Calhoun	A Community Voice
Vanessa Gueringer	A Community Voice
Linda Jackson	Lower 9th ward HOA
Bernard Merricks	A Community Voice
Laura Paul	Lowernine.org
Rev. Joel W. Tyler	Second Rose of Sharon
Mario Washington	Lower 9th ward HOA
City Officials	
Ray Bolling	City of New Orleans
Haley Delery	Capital Projects
Victor Richard	NORDC
Vincent Smith	Capital Projects
Landscape Architects	
Chris Africh	Dana Brown & Associates
Dana Brown	Dana Brown & Associates
Danielle Duhe	Dana Brown & Associates

A Community Voice meeting attendees: August 8, 2013
Conrad Bailey
Burnell Celton
Verga Fortenberry
Alma Franklin
Jason Freeman
Vanessa Gueringer
Officer Victoria Guidry
Rev. Johnny Huges Jr.
H.L. Irwin
Joyce Jackson
James Kaigler
Mary Lochett
Henretta Manuel
Nicole O'Hond
Marlene Pete
Nowell Phillips
Robert Richardson
Sergeant L.J. Smith
Janet Tobes
Berry Reynolds
Stephen Wilson
Louis Young

DANA BROWN & ASSOCIATES

1836 Valence Street, New Orleans, LA 70115

504.345.2639

www.danabrownassociates.com