

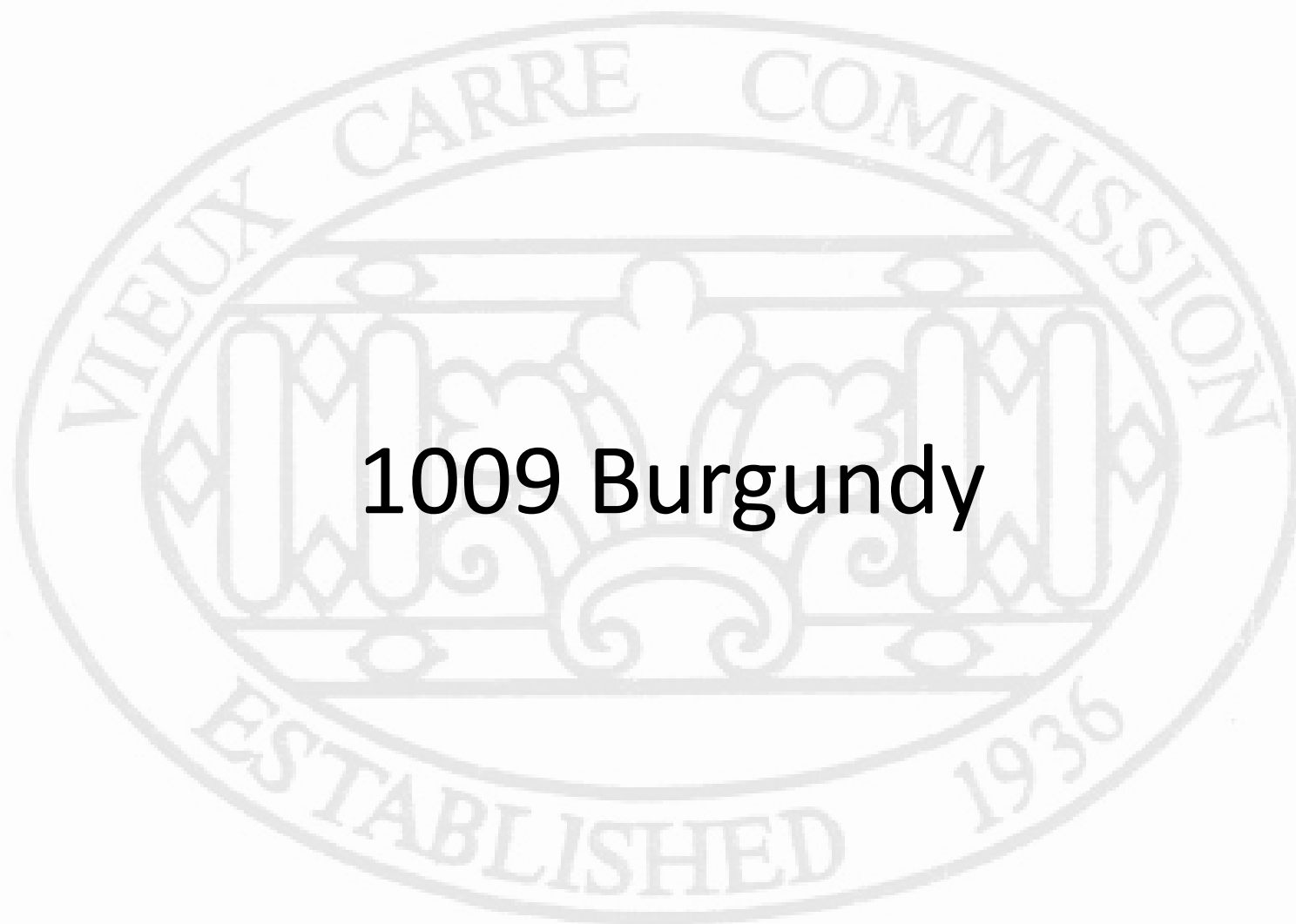


# Vieux Carré Commission Architecture Committee Meeting

Tuesday, August 10, 2021



# New Business



**1009 Burgundy**



1009 Burgundy

VCC Architectural Committee

August 10, 2021





1009 Burgundy

VCC Architectural Committee

August 10, 2021





1009 Burgundy





1009 Burgundy

VCC Architectural Committee

August 10, 2021





1009 Burgundy





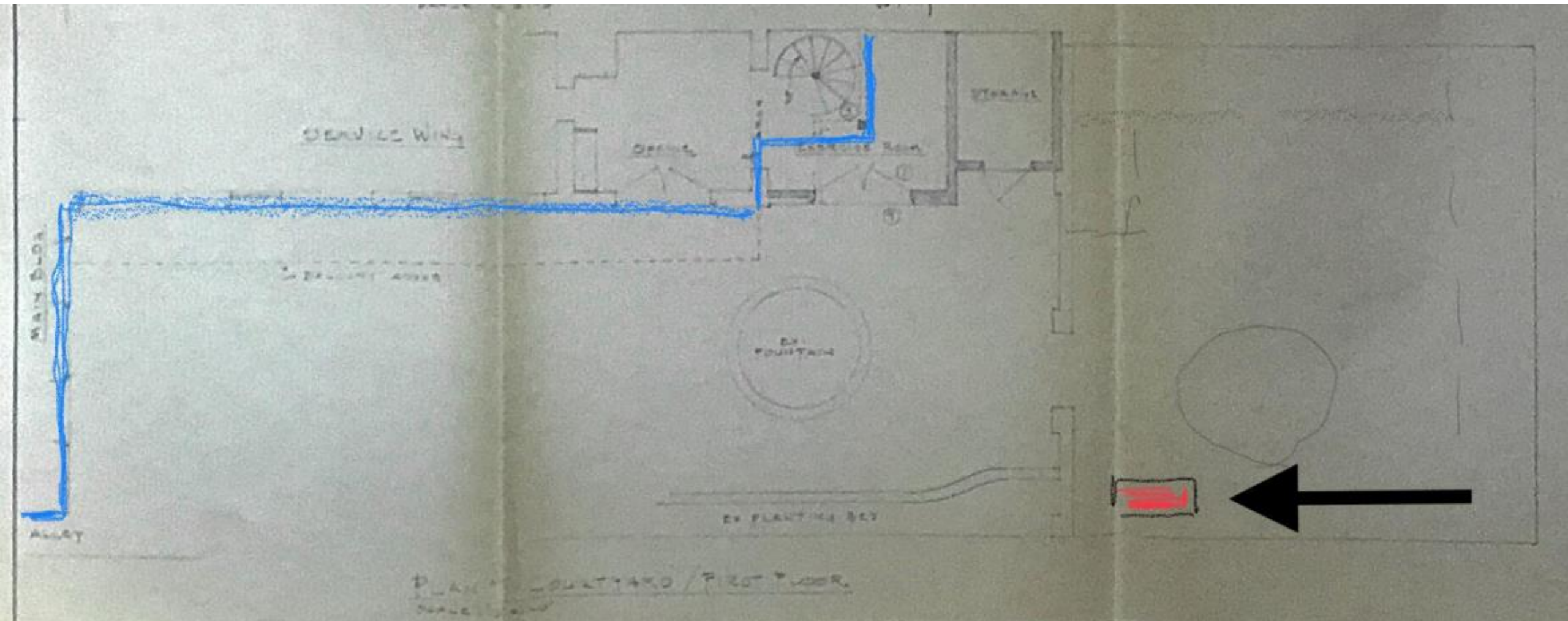


1009 Burgundy

VCC Architectural Committee

August 10, 2021





1009 Burgundy

VCC Architectural Committee

August 10, 2021





1009 Burgundy

VCC Architectural Committee

August 10, 2021



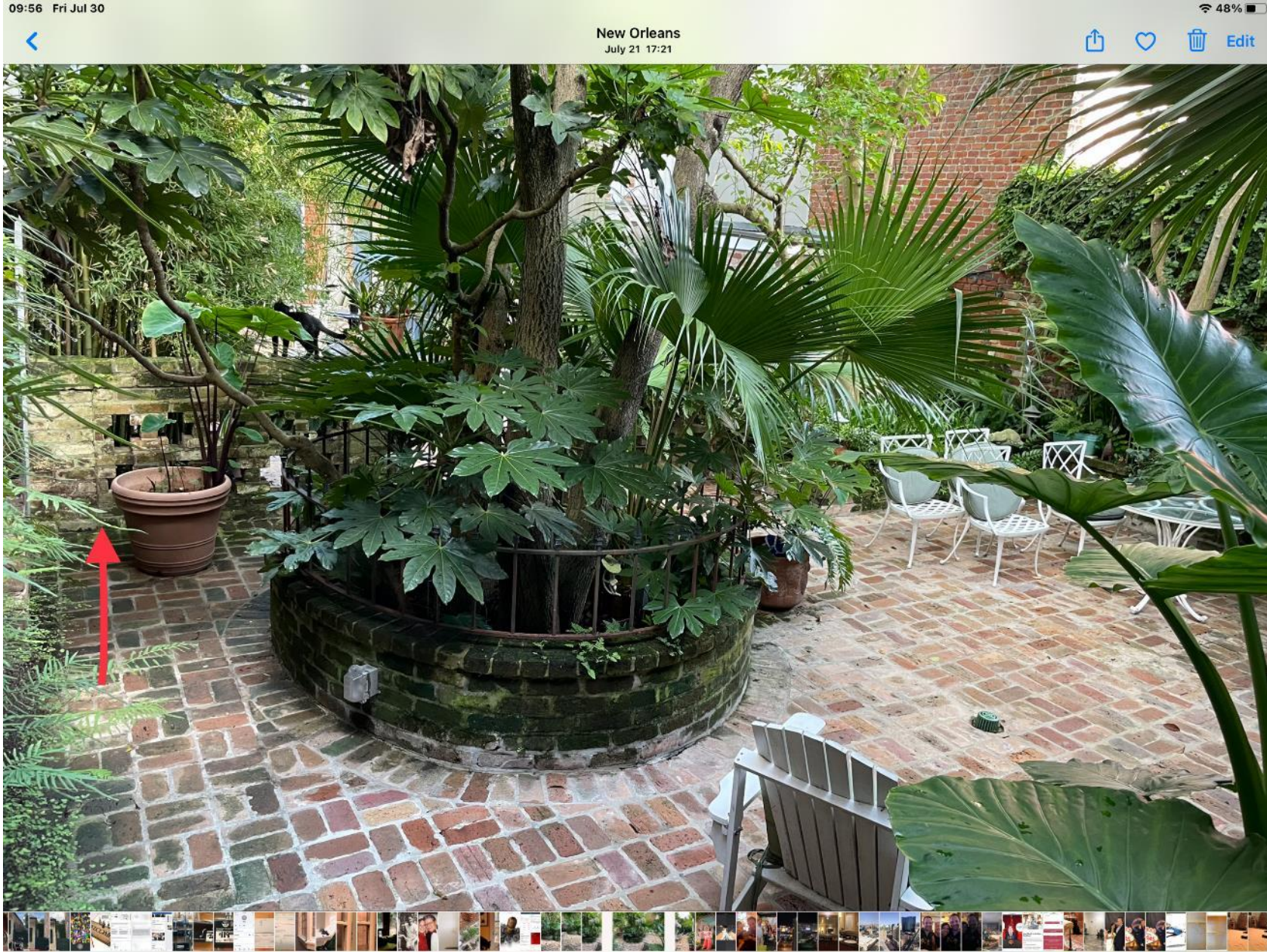


1009 Burgundy

VCC Architectural Committee

August 10, 2021





# 1009 Burgundy

VCC Architectural Committee

August 10, 2021



20/22/24 kW

# GENERAC®

## GUARDIAN® SERIES Residential Standby Generators Air-Cooled Gas Engine

20/22/24 kW

1 of 6

### INCLUDES:

- True Power™ Electrical Technology
  - Two-line multilingual digital LCD Evolution™ controller (English/Spanish/French/Portuguese)
  - 200 amp service rated transfer switch available
  - Electronic governor
  - Standard Wi-Fi® connectivity
  - System status & maintenance interval LED indicators
  - Sound attenuated enclosure
  - Flexible fuel line connector
  - Natural gas or LP gas operation
  - 5 Year limited warranty
  - Listed and labeled for installation as close as 18 in (457 mm) to a structure.\*
- \*Must be located away from doors, windows, and fresh air intakes and in accordance with local codes.*

### Standby Power Rating

G007038-1, G007039-1, G007038-3, G007039-3 (Aluminum) - Bisques - 20 kW 50 Hz  
 G007042-2, G007043-2, G007042-3, G007043-3 (Aluminum) - Bisques - 22 kW 50 Hz  
 G007209-0, G007210-1 (Aluminum) - Bisques - 24 kW 60 Hz



Note: CETL or CUL certification only applies to unbundled units and units packaged with limited circuit switches. Units packaged with the Smart Switch are ETL or UL certified in the USA only.

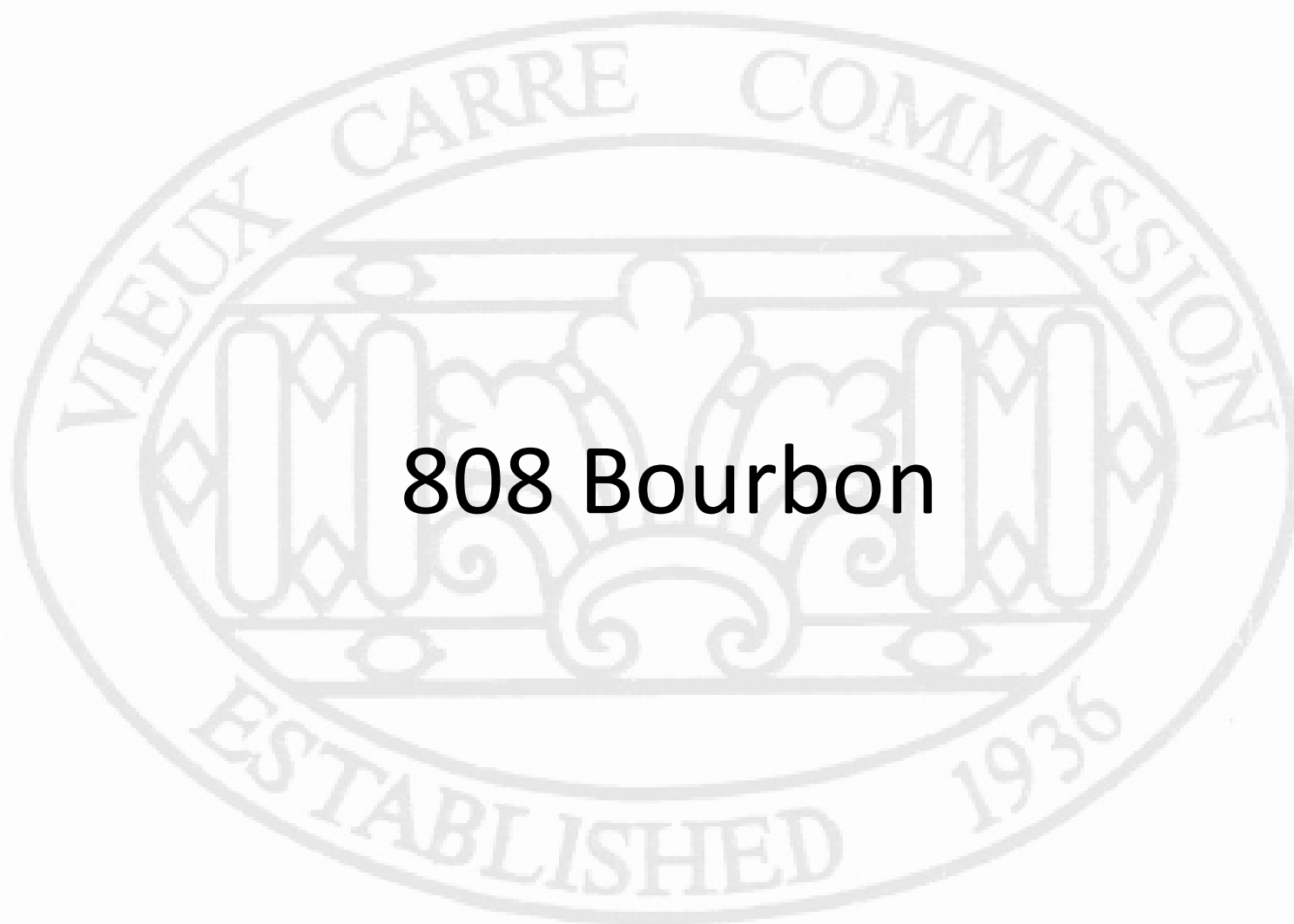


# 24kW GUARDIAN SERIES Home Standby Generators

SPECIFICATIONS (LP/NG)	10/9 kW	14/14 kW	18/17 kW	22/19.5 kW	24/21 kW
Generator Only Model	7171	7223	7226	7042	7200
Generator / 100 Amp Select Circuit Switch Model	7172	7224	-	-	-
Generator / 200 Amp Service Rated Load Shedding Smart Switch Package Model	-	7225	7228	7043	7210
Voltage (Single Phase)			120 / 240		
Amps @ 240V LPG	41.7	58.3	75.0	91.7	100
Amps @ 240V NG	37.5	58.3	70.8	81.3	87.5
Engine/Alternator RPM			3600 / 3600		
Engine			Generac G-Force		
Engine Displacement	460cc		816cc		999cc
Fuel Consumption @ 1/2 Load - NG cu. ft/hr	101	195	169	228*	203
Fuel Consumption @ Full Load - NG cu. ft/hr	127	256	247	327*	306
Fuel Consumption @ 1/2 Load - LPG cu. ft/hr (gal/hr)	36 (0.97)	65 (1.81)	62 (1.70)	92 (2.53)*	92 (2.53)
Fuel Consumption @ Full Load - LPG cu. ft/hr (gal/hr)	54 (1.48)	112 (3.07)	110 (3.02)	142 (3.90)*	142 (3.90)
Quiet-Test Mode			Yes		
db(A) at Exercise	57		55	57	57
db(A) at Normal Operating Load	61		65	67	67
Enclosure			Aluminum		
Enclosure Color			Bisque		
Warranty			5-Year Limited		
Dimensions - L" x W" x H" in. (mm)	48 x 25 x 29 (1218 x 638 x 727)				
Weight (lb)	338	385	420	466*	445
Mobile Link Wireless Connectivity			Yes		

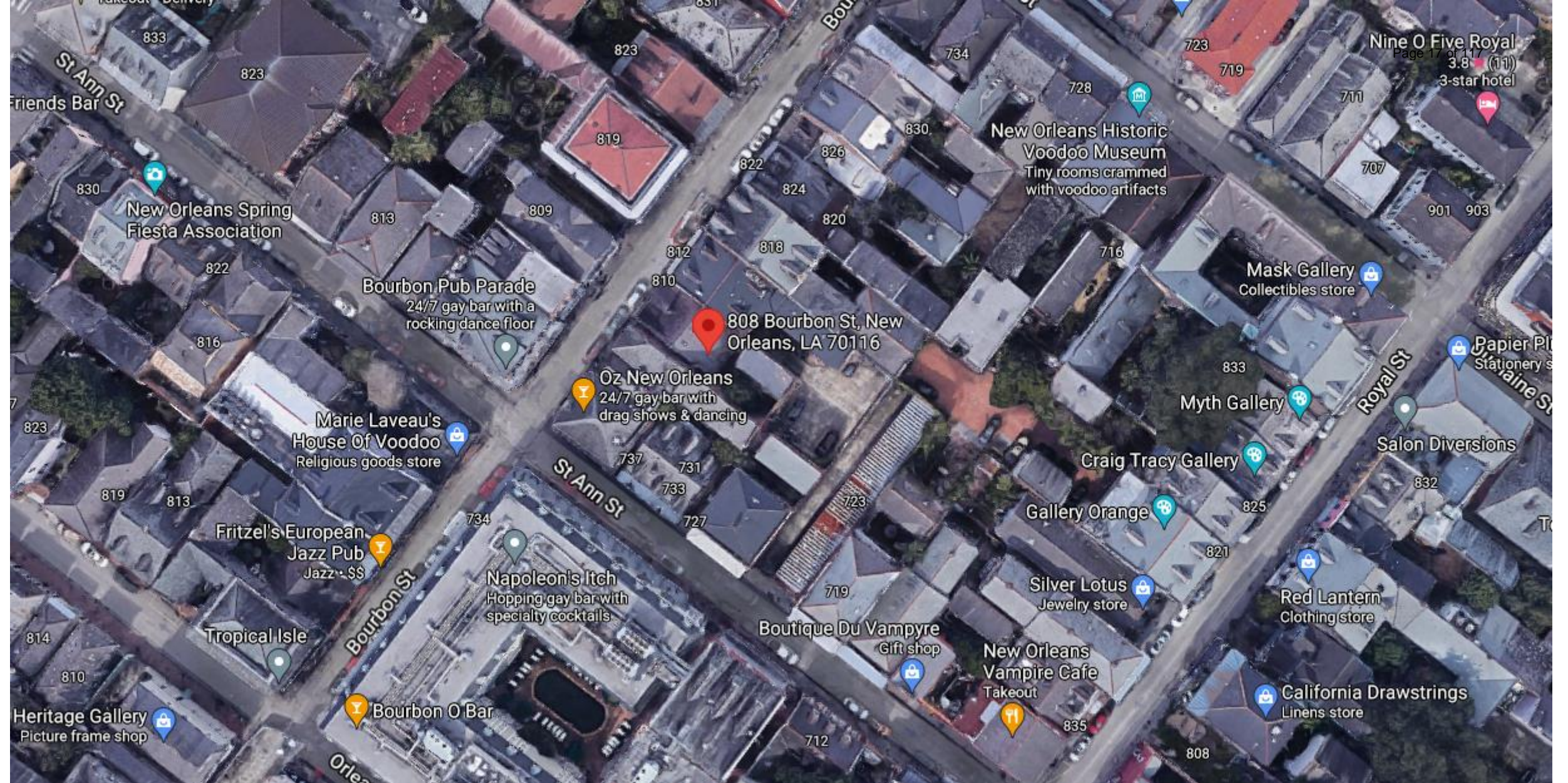
\*7042-2 & 7043-2 specifications





**808 Bourbon**





808 Bourbon

VCC Architectural Committee

August 10, 2021





808 Bourbon

VCC Architectural Committee

August 10, 2021





808 Bourbon

VCC Architectural Committee

August 10, 2021





808 Bourbon

VCC Architectural Committee

August 10, 2021





808 Bourbon

VCC Architectural Committee

03 14 2019

August 10, 2021





808 Bourbon

VCC Architectural Committee

03 14 2019

August 10, 2021





808 Bourbon

VCC Architectural Committee

03 14 2019

August 10, 2021





03 14 2019

808 Bourbon

VCC Architectural Committee

August 10, 2021







808 Bourbon

VCC Architectural Committee

03 14 2019

August 10, 2021





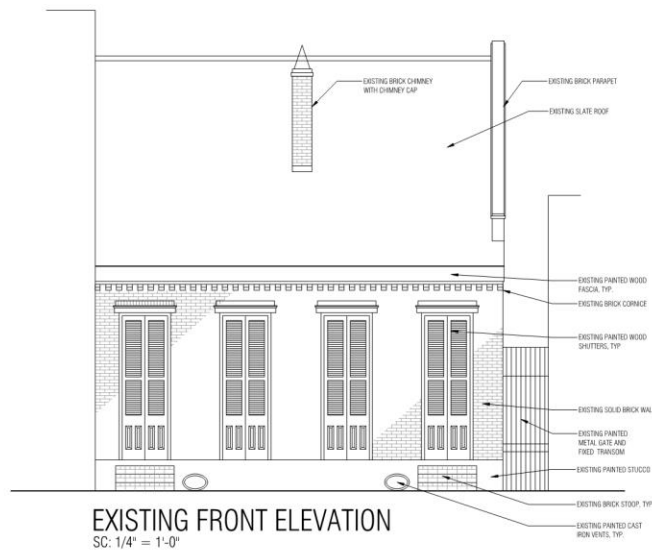
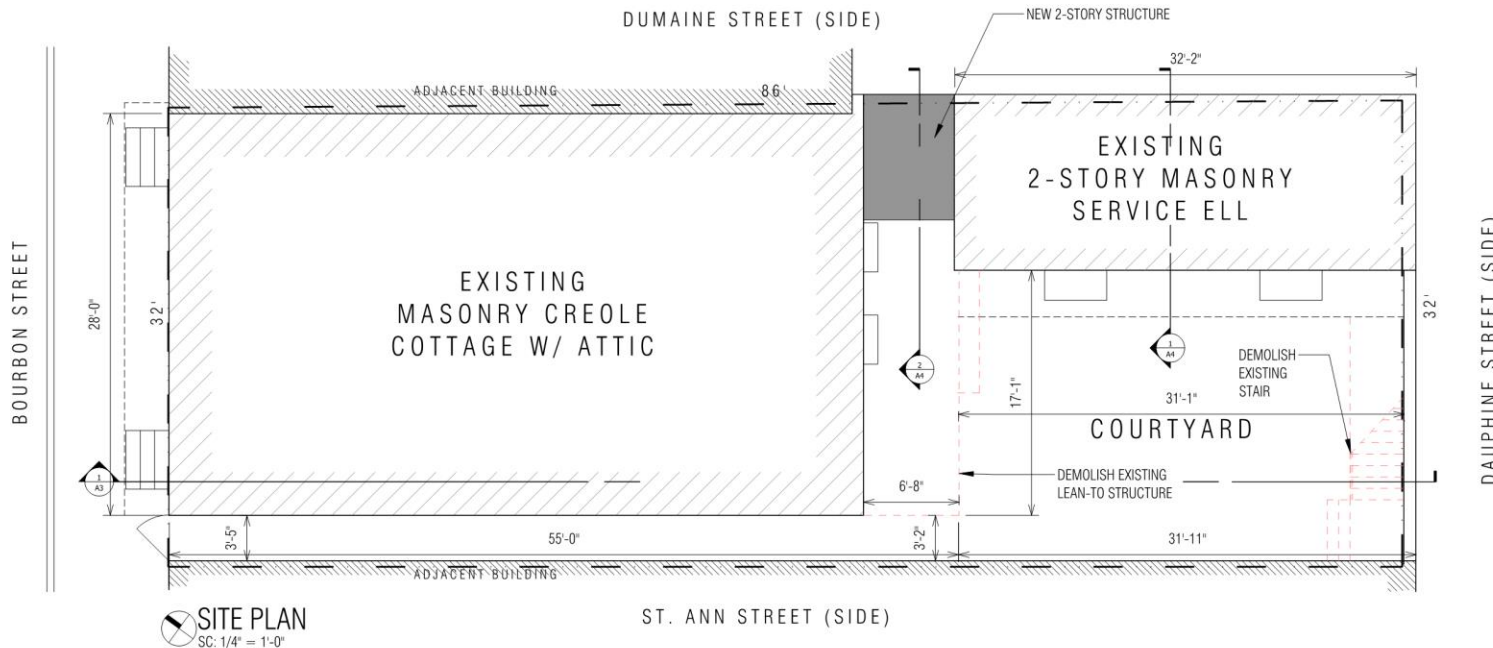
808 Bourbon





808 Bourbon





808 Bourbon

VCC Architectural Committee

**RENOVATIONS OF  
 808-10 BOURBON ST. RESIDENCE**  
 New Orleans, Louisiana 70116

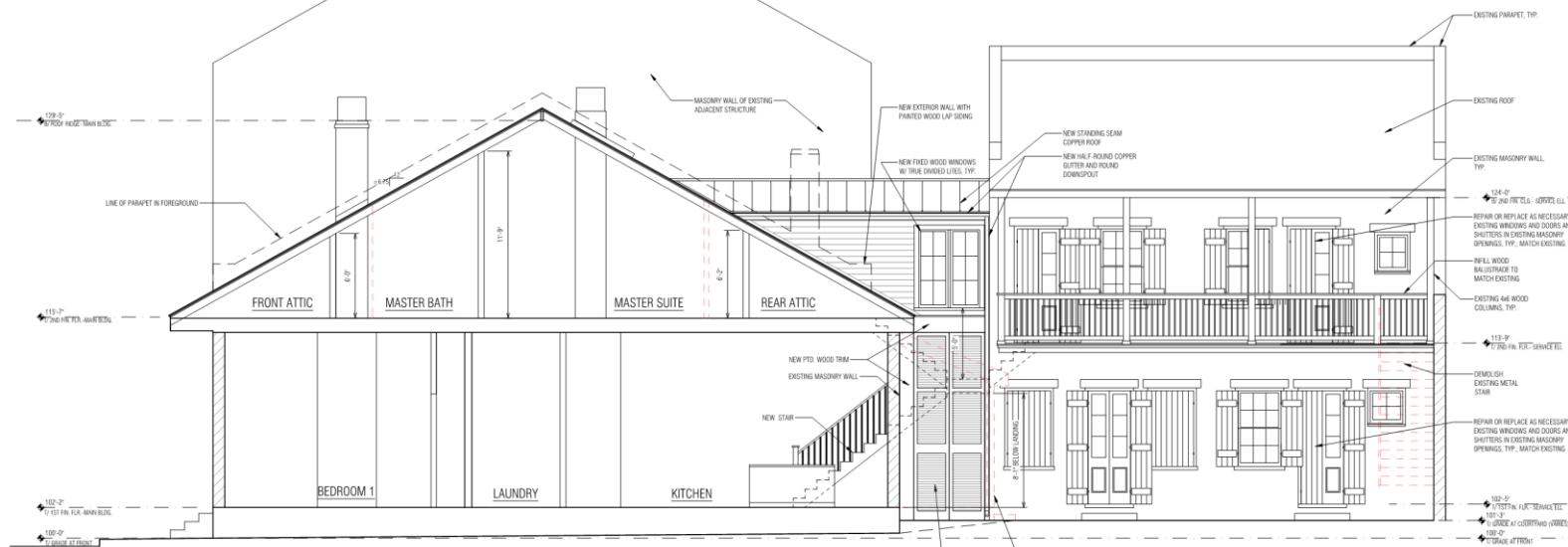
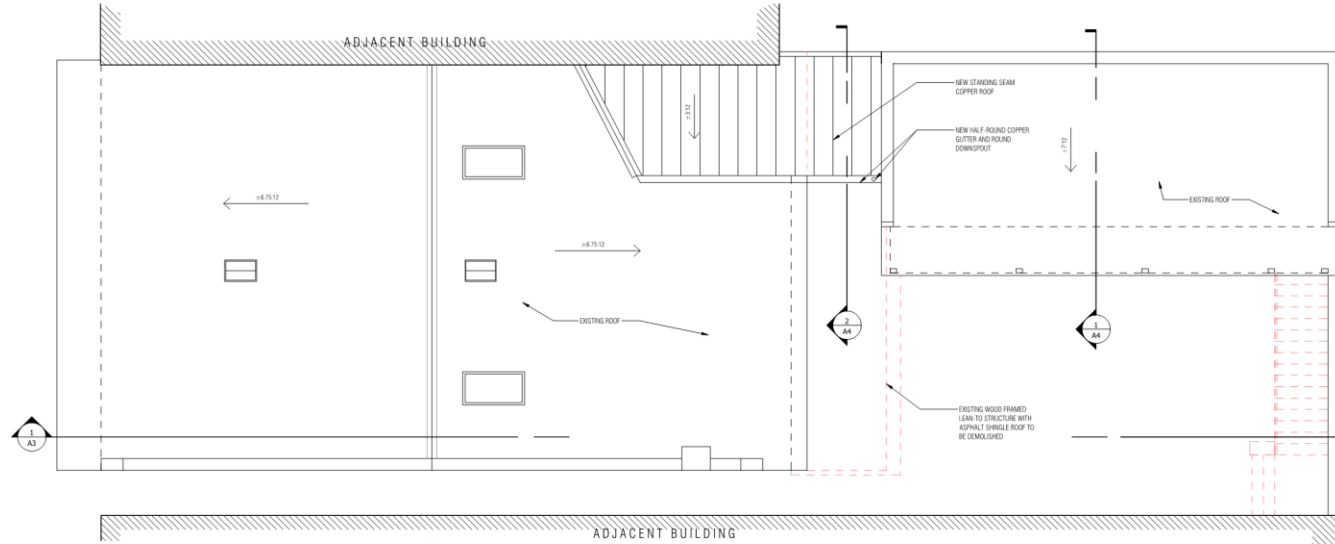
**LKHarmon Architects**  
 A Professional Architectural Corporation  
 6236 Argonne Boulevard  
 New Orleans, Louisiana 70124  
 504.481.2870 lharmo@lkharmearchitects.com

7.19.2021	<b>A1</b>
LKH#3421	



August 10, 2021





**MAIN BUILDING SECTION / ELEVATION OF SERVICE ELL**  
 SC: 1/4" = 1'-0"

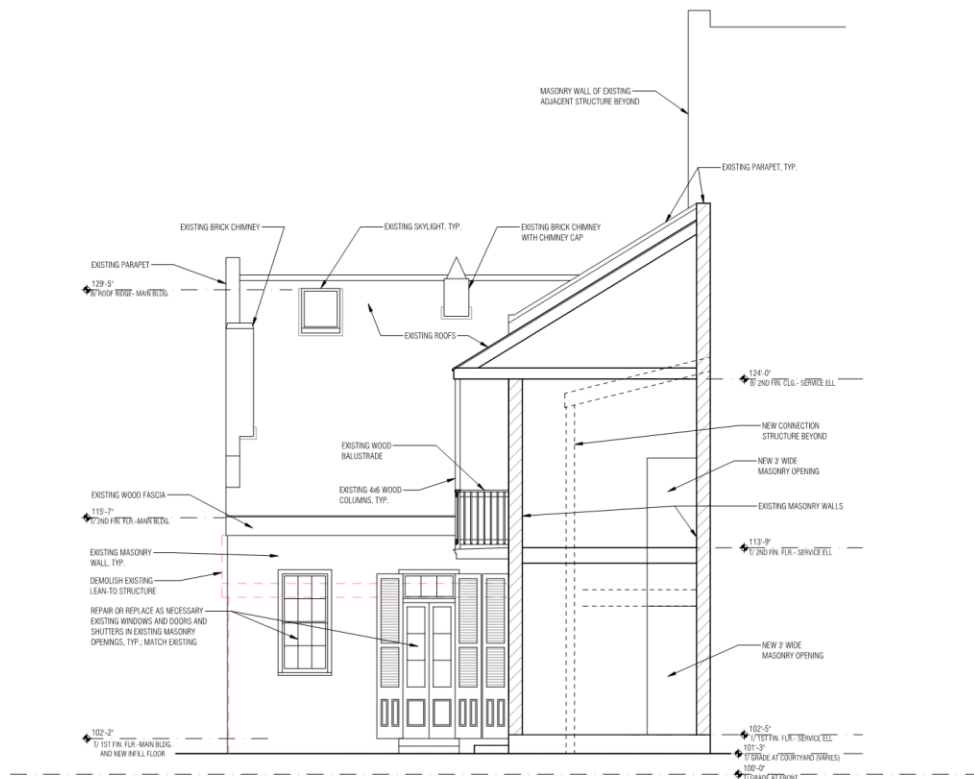
<b>RENOVATIONS OF</b> <b>808-10 BOURBON ST. RESIDENCE</b> New Orleans, Louisiana 70116	 <b>LKHarmou Architects</b> A Professional Architectural Corporation 8238 Argonne Boulevard New Orleans, Louisiana 70124 504.485.9870 lkharmo@lkharmoarchitects.com	7.19.2021	<b>A3</b> LKH#3421

808 Bourbon

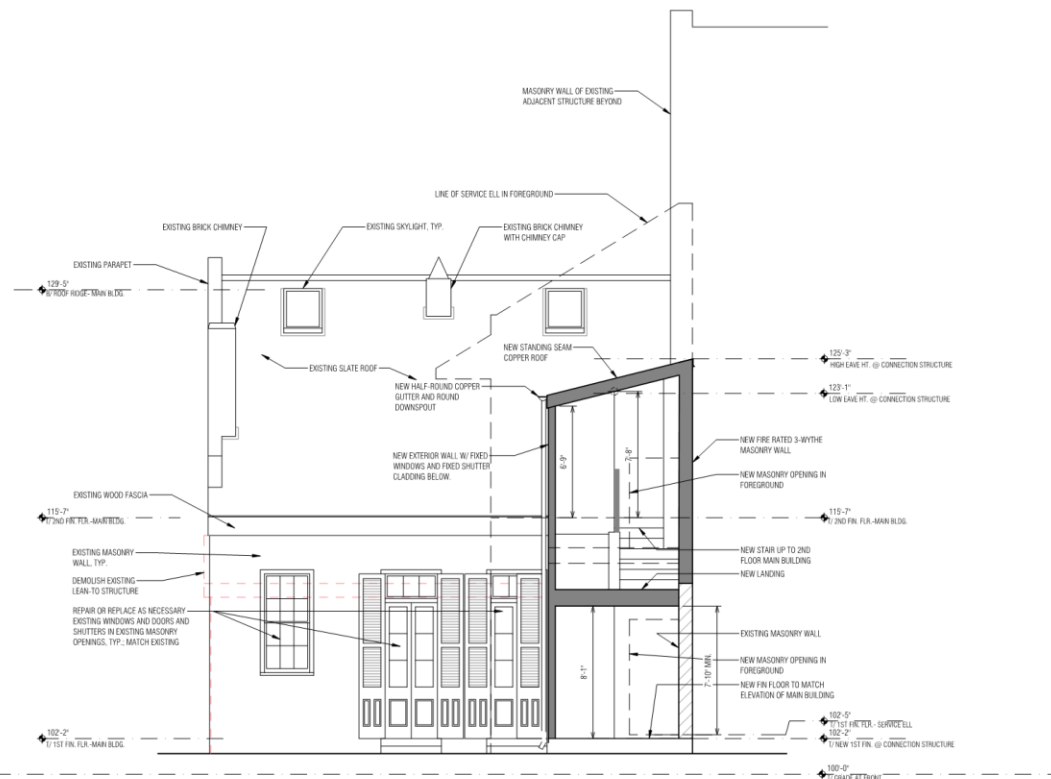
VCC Architectural Committee

August 10, 2021





1  
A4 SERVICE ELL BUILDING SECTION / REAR ELEVATION OF MAIN BUILDING  
SC: 1/4" = 1'-0"



2  
A4 SECTION THRU NEW CONNECTION STRUCTURE / REAR ELEVATION OF MAIN BUILDING  
SC: 1/4" = 1'-0"

808 Bourbon

VCC Architectural Committee

RENOVATIONS OF  
808-10 BOURBON ST. RESIDENCE  
New Orleans, Louisiana 70116



**LKHarm Architects**  
A Professional Architectural Corporation  
6238 Argonne Boulevard  
New Orleans Louisiana 70124  
504.485.5870 harmon@lkharmarchitects.com

7.19.2021	A4
LKH#3421	



August 10, 2021



808 Bourbon

VCC Architectural Committee

August 10, 2021



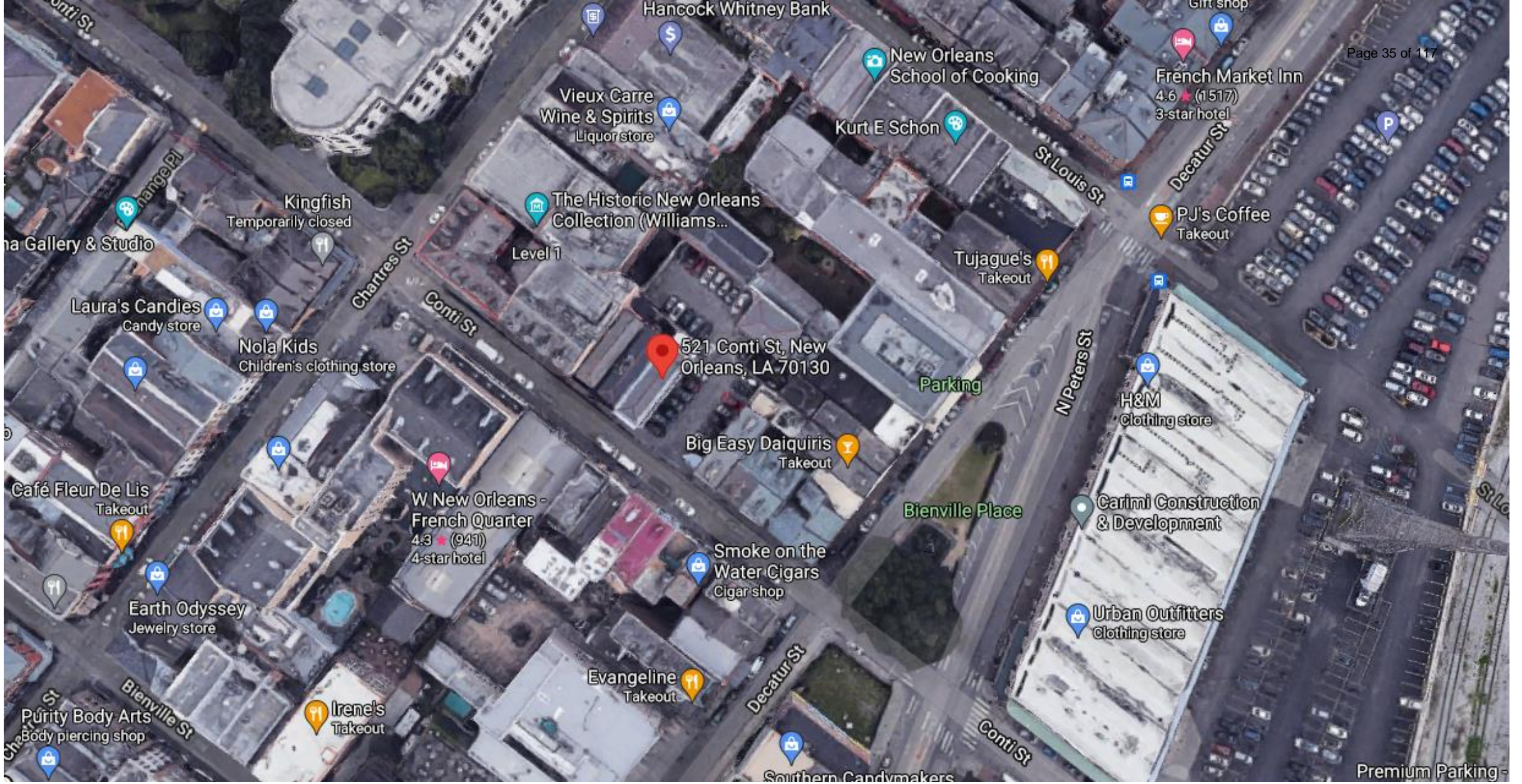




808 Bourbon



**521 Conti**



# 521 Conti

VCC Architectural Committee

August 10, 2021





521 Conti

VCC Architectural Committee

August 10, 2021





521 Conti

VCC Architectural Committee

August 10, 2021





521 Conti





521 Conti

VCC Architectural Committee

August 10, 2021



NEW MORTAR DOME CAP ON PARAPET

NEW COPPER CAP AND COPPER FLASHING ON LOW PARAPET

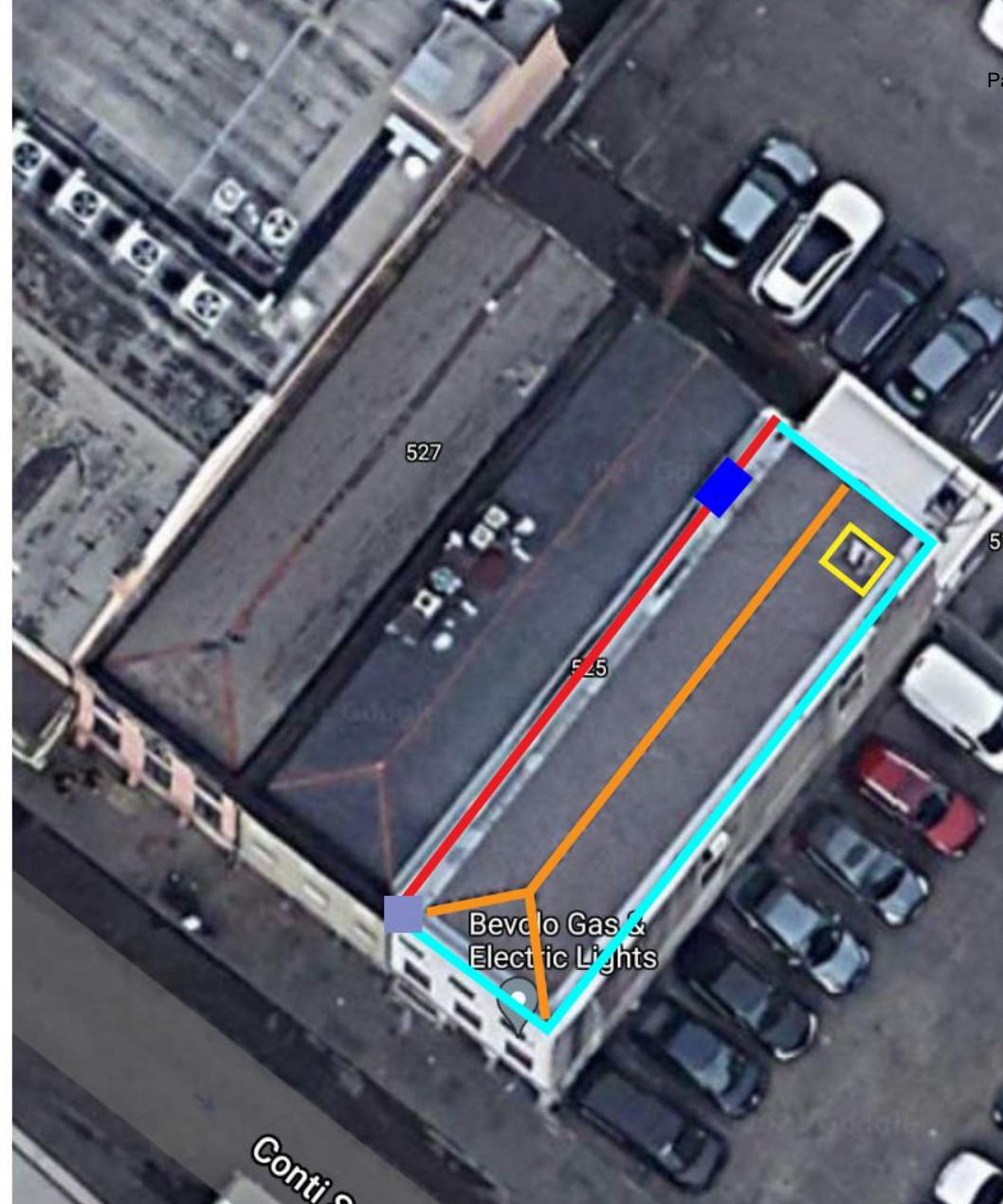
REMOVE AND REINSTALL EXISTING HECKER RIDGE TILES WITH CEMENT MORTAR

REMOVE EXISTING GALVALUME ON CHIMNEY AND REPLACE WITH COPPER

REPLACE EXISTING LEADER HEADS WITH NEW COPPER LEADER HEADS

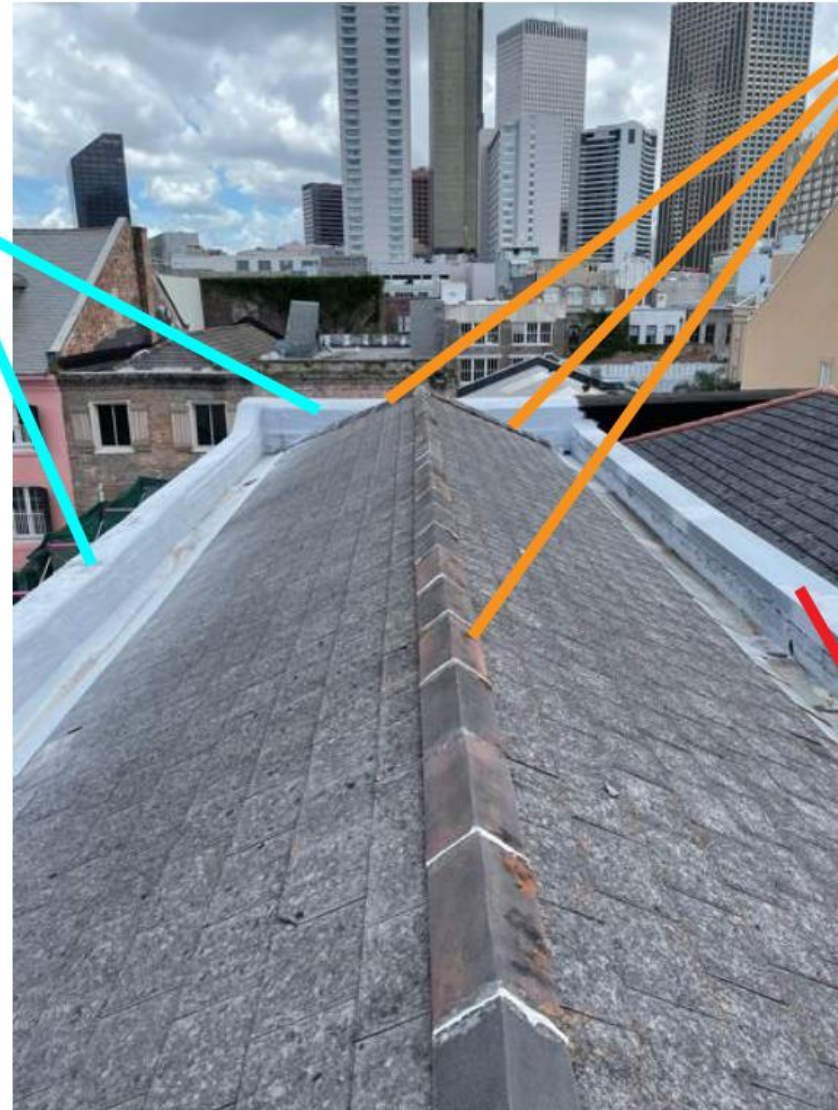
EXISTING ROOF HATCH TO BE REMOVED AND REPLACED WITH NEW ROOF HATCH (SEE ATTACHED SPECS) AND PAINTED DARK COLOR TO MATCH SHINGLES

ENTIRE ROOF ON 521 CONTI TO BE REMOVED AND REPLACED WITH NEW SLATE





NEW MORTAR DOME CAP  
ON PARAPET



REMOVE AND REINSTALL EXISTING  
HECKER RIDGE TILES WITH CEMENT  
MORTAR

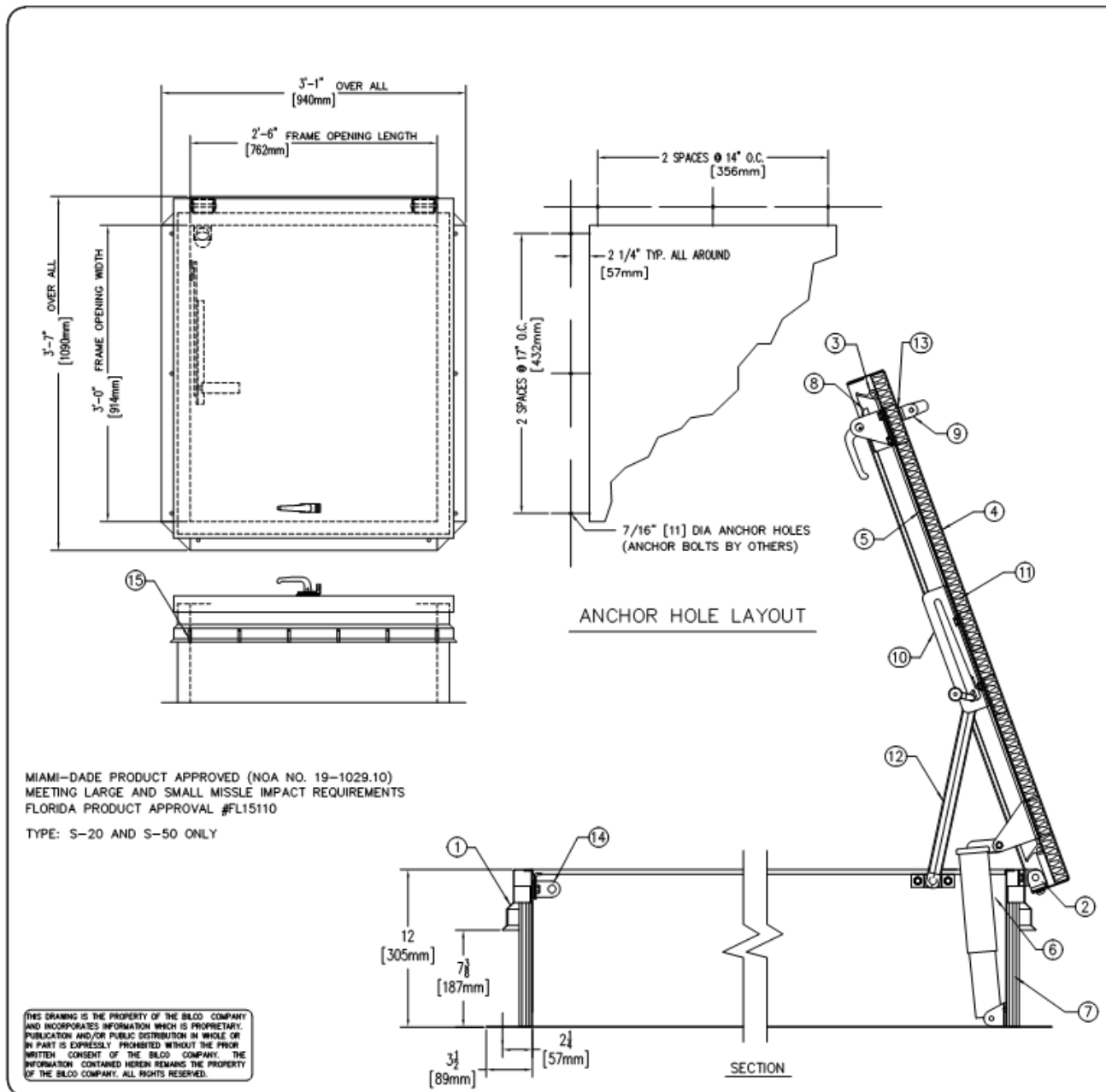
NEW COPPER CAP ON LOW  
PARAPET

REMOVE EXISTING GALVALUME  
ON CHIMNEY AND REPLACE  
WITH COPPER



EXISTING ROOF HATCH TO BE  
REMOVED AND REPLACED  
WITH NEW ROOF HATCH  
(SEE ATTACHED SPECS) AND  
PAINTED DARK COLOR TO MATCH  
SHINGLES





MIAMI-DADE PRODUCT APPROVED (NOA NO. 19-1029.10)  
 MEETING LARGE AND SMALL MISSILE IMPACT REQUIREMENTS  
 FLORIDA PRODUCT APPROVAL #FL15110  
 TYPE: S-20 AND S-50 ONLY

THIS DRAWING IS THE PROPERTY OF THE BILCO COMPANY AND INCORPORATES INFORMATION WHICH IS PROPRIETARY. PUBLICATION AND/OR PUBLIC DISTRIBUTION IN WHOLE OR IN PART IS EXPRESSLY PROHIBITED WITHOUT THE PRIOR WRITTEN CONSENT OF THE BILCO COMPANY. THE INFORMATION CONTAINED HEREIN REMAINS THE PROPERTY OF THE BILCO COMPANY. ALL RIGHTS RESERVED.

**SPECIFICATIONS**

1. FRAME W/ CAPFLASHING (CORNERS FULL WELDED)
  - S-20 - 14 GAUGE P.B. GALV. STEEL
  - S-40 - 14 GAUGE P.B. GALV. STEEL
  - S-50 - 11 GAUGE ALUMINUM
  - S-90 - 14 GAUGE TYPE 304 STAINLESS STEEL
2. PINTLE HINGE
3. GASKET (ALL AROUND COVER)
4. COVER GAUGE
  - S-20 - 14 GAUGE P.B. GALV. STEEL
  - S-40 - 11 GAUGE ALUMINUM
  - S-50 - 11 GAUGE ALUMINUM
  - S-90 - 14 GAUGE TYPE 304 STAINLESS STEEL
5. COVER LINER
  - S-20 - 22 GAUGE P.B. GALV. STEEL
  - S-40 - 18 GAUGE ALUMINUM
  - S-50 - 18 GAUGE ALUMINUM
  - S-90 - 22 GAUGE TYPE 304 STAINLESS STEEL
6. SPRING LIFTING MECHANISM
7. 1" RIGID FIBERBOARD INSULATION
8. SLAM LATCH
9. INSIDE AND OUTSIDE HANDLES W/ PADLOCK HASPS
10. ARM GUIDE BRACKET
11. 1" THICK FIBERGLASS COVER INSULATION
12. HOLD OPEN ARM W/ RED VINYL GRIP
13. NEOPRENE GASKET
14. LOCK STRIKE & PADLOCK HASP
15. BILCLIP® FLASHING SYSTEM

SHOP FINISH:  
 STEEL: RED OXIDE PRIMER  
 ALUMINUM: MILL FINISH  
 HARDWARE: NON-CORROSIVE MATERIALS (UNLESS OTHERWISE SPECIFIED)  
 STAINLESS STEEL: BEADBLAST FINISH TYPE 316 S/S HARDWARE

THIS PRODUCT MAY BE INSTALLED ON EITHER A FLAT OR SLOPING ROOF. WHEN INSTALLED ON A SLOPE, THE HINGE SIDE MUST RUN PARALLEL WITH THE SLOPE. IF SLOPE EXCEEDS 30°, ADVISE FACTORY FOR MODIFICATION.

CUSTOMER: \_\_\_\_\_

P.O. N° \_\_\_\_\_

JOB: \_\_\_\_\_

SALES REP: \_\_\_\_\_

Manufacturers of Doors for Special Services  
**Bilco**® THE BILCO COMPANY  
 New Haven, Connecticut 06505

**SINGLE LEAF ROOF SCUTTLE**  
 TYPE S SIZE 3'-0" x 2'-6"  
 WIDTH x LENGTH  
 METAL

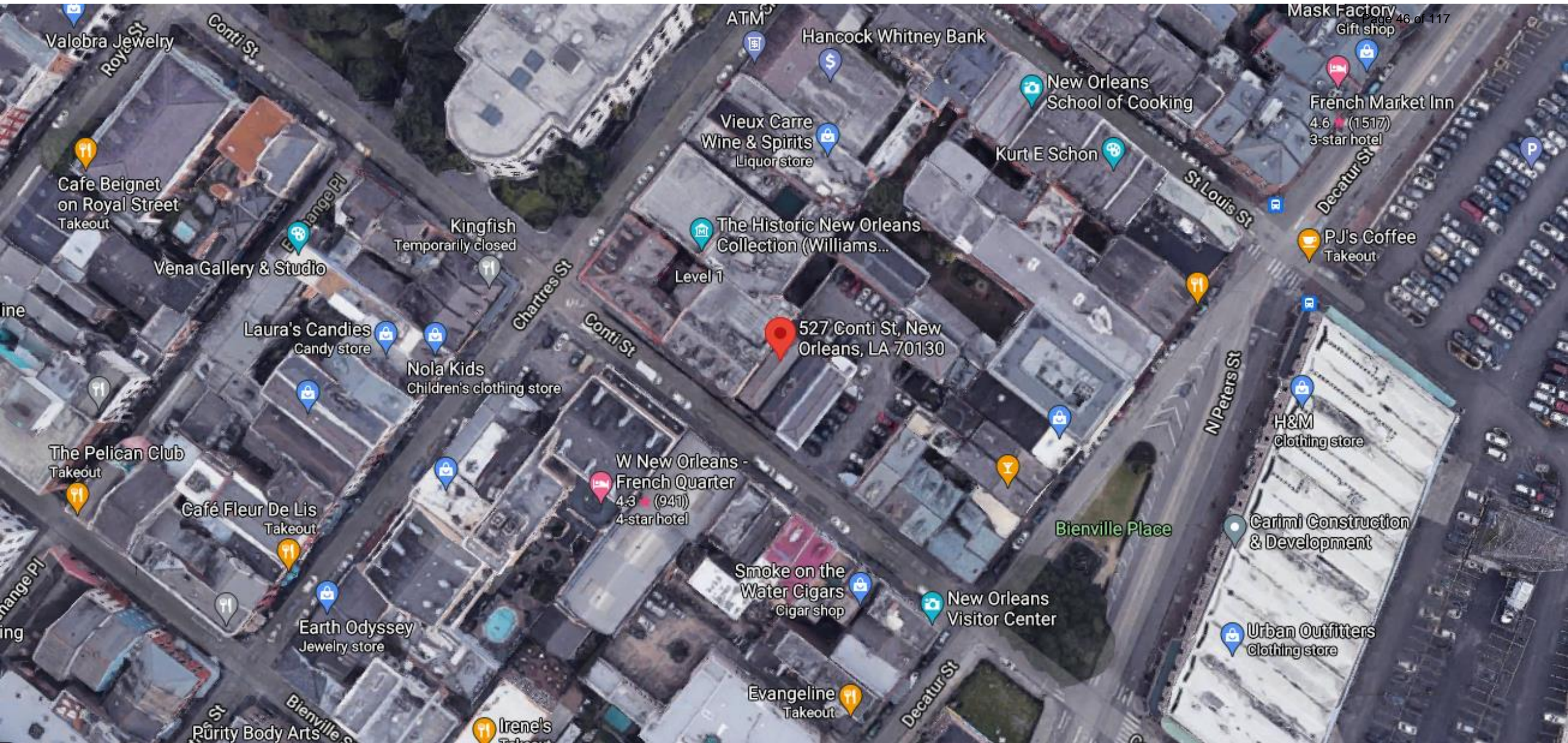
QTY	TYPE	DESCRIPTION
	S-20	STEEL COVER/STEEL FRAME
	S-40	ALUM. COVER/STEEL FRAME
	S-50	ALUM. COVER/ALUM. FRAME
	S-90	STLS STL COVER/STLS STL FRAME

© 05-01-20 THE BILCO COMPANY





**527 Conti**



527 Conti

VCC Architectural Committee

August 10, 2021





527 Conti

VCC Architectural Committee

August 10, 2021





527 Conti

VCC Architectural Committee

August 10, 2021







527 Conti - Rear

VCC Architectural Committee

August 10, 2021



NEW MORTAR DOME CAP ON PARAPET

EXISTING COPPER CAP ON PARAPETS AND FLASHING TO REMAIN

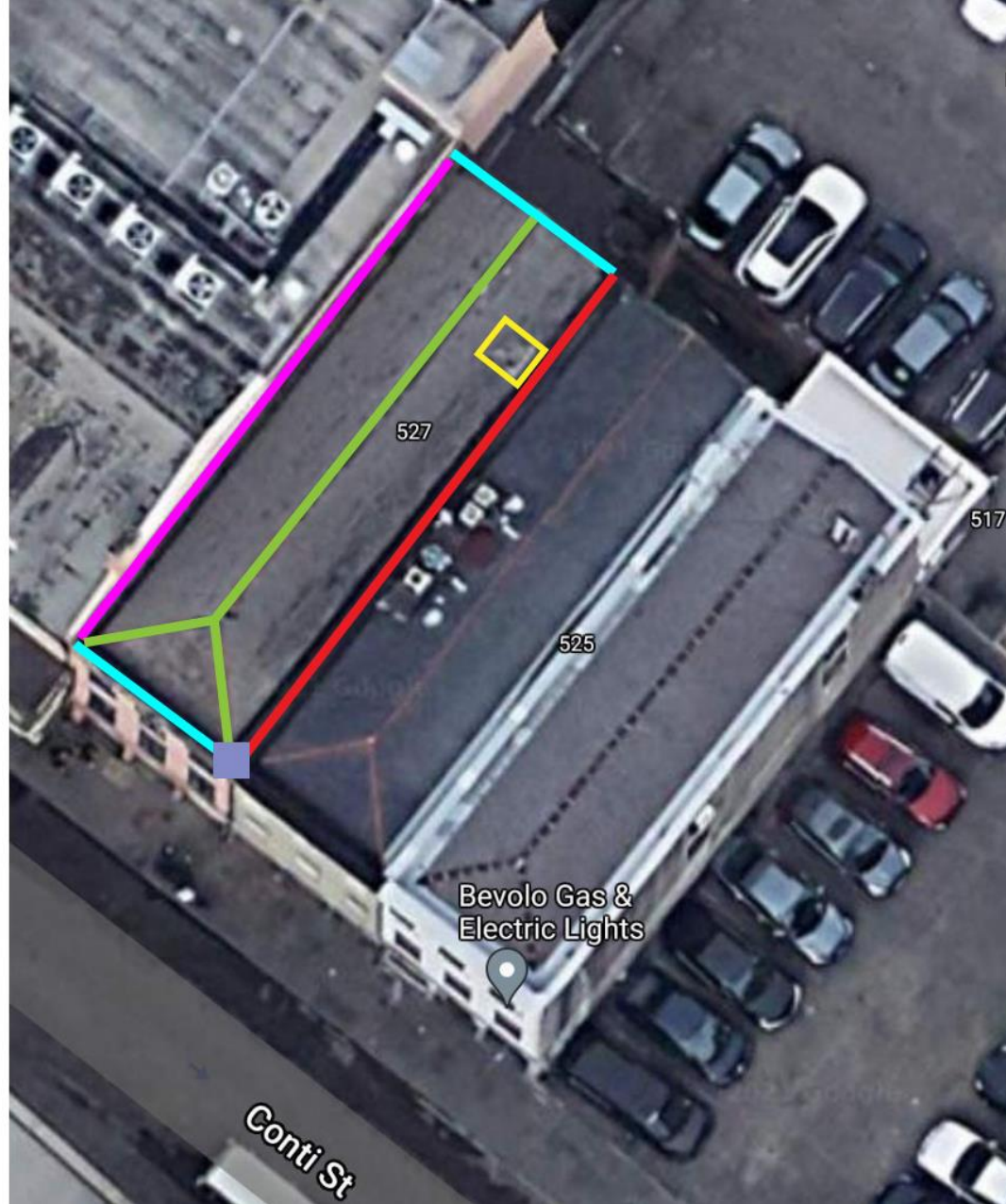
NEW COPPER CAP AND COPPER FLASHING ON LOW PARAPET

REMOVE AND REPLACE EXISTING HECKER RIDGE TILES WITH NEW HECKER RIDGE TILES AND CEMENT MORTAR

REPLACE EXISTING LEADER HEADS WITH NEW COPPER LEADER HEADS

EXISTING ROOF HATCH TO BE REMOVED AND REPLACED WITH NEW ROOF HATCH (SEE ATTACHED SPECS) AND PAINTED DARK COLOR TO MATCH SHINGLES

ENTIRE ROOF ON 527 CONTI TO BE REMOVED AND REPLACED WITH NEW SLATE



NEW MORTAR DOME CAP  
ON PARAPET

NEW COPPER CAP ON LOW  
PARAPET



REMOVE AND REPLACE EXISTING  
HECKER RIDGE TILES WITH NEW  
HECKER RIDGE TILES AND CEMENT  
MORTAR

EXISTING COPPER CAP ON PARAPET  
TO REMAIN

EXISTING ROOF HATCH TO BE  
REMOVED AND REPLACED  
WITH NEW ROOF HATCH  
(SEE ATTACHED SPECS) AND  
PAINTED DARK COLOR TO MATCH  
SHINGLES



**3'-1" OVER ALL**  
[940mm]

**2'-6" FRAME OPENING LENGTH**  
[762mm]

**3'-7" OVER ALL**  
[1093mm]

**3'-0" FRAME OPENING WIDTH**  
[914mm]

**2 SPACES @ 14" O.C.**  
[356mm]

**2 1/4" TYP. ALL AROUND**  
[57mm]

**2 SPACES @ 17" O.C.**  
[432mm]

**7/16" [11] DIA ANCHOR HOLES**  
(ANCHOR BOLTS BY OTHERS)

**ANCHOR HOLE LAYOUT**

**SECTION**

**12**  
[305mm]

**7 3/8**  
[187mm]

**3 1/2**  
[89mm]

**2 1/4**  
[57mm]

**1**

**14**

**2**

**6**

**7**

**3**

**13**

**8**

**9**

**4**

**5**

**11**

**10**

**12**

**15**

**15**

**MIAMI-DADE PRODUCT APPROVED (NOA NO. 19-1029.10)**  
**MEETING LARGE AND SMALL MISSILE IMPACT REQUIREMENTS**  
**FLORIDA PRODUCT APPROVAL #FL15110**  
**TYPE: S-20 AND S-50 ONLY**

**THIS DRAWING IS THE PROPERTY OF THE BILCO COMPANY AND INCORPORATES INFORMATION WHICH IS PROPRIETARY. PUBLICATION AND/OR PUBLIC DISTRIBUTION IN WHOLE OR IN PART IS EXPRESSLY PROHIBITED WITHOUT THE PRIOR WRITTEN CONSENT OF THE BILCO COMPANY. THE INFORMATION CONTAINED HEREIN REMAINS THE PROPERTY OF THE BILCO COMPANY. ALL RIGHTS RESERVED.**

**SPECIFICATIONS**

- FRAME W/ CAPFLASHING (CORNERS FULL WELDED)
  - S-20 - 14 GAUGE P.B. GALV. STEEL
  - S-40 - 14 GAUGE P.B. GALV. STEEL
  - S-50 - 11 GAUGE ALUMINUM
  - S-90 - 14 GAUGE TYPE 304 STAINLESS STEEL
- PINTLE HINGE
- GASKET (ALL AROUND COVER)
- COVER GAUGE
  - S-20 - 14 GAUGE P.B. GALV. STEEL
  - S-40 - 11 GAUGE ALUMINUM
  - S-50 - 11 GAUGE ALUMINUM
  - S-90 - 14 GAUGE TYPE 304 STAINLESS STEEL
- COVER LINER
  - S-20 - 22 GAUGE P.B. GALV. STEEL
  - S-40 - 18 GAUGE ALUMINUM
  - S-50 - 18 GAUGE ALUMINUM
  - S-90 - 22 GAUGE TYPE 304 STAINLESS STEEL
- SPRING LIFTING MECHANISM
- 1" RIGID FIBERBOARD INSULATION
- SLAM LATCH
- INSIDE AND OUTSIDE HANDLES W/ PADLOCK HASPS
- ARM GUIDE BRACKET
- 1" THICK FIBERGLASS COVER INSULATION
- HOLD OPEN ARM W/ RED VINYL GRIP
- NEOPRENE GASKET
- LOCK STRIKE & PADLOCK HASP
- BILCLIP® FLASHING SYSTEM

SHOP FINISH:  
STEEL: RED OXIDE PRIMER  
ALUMINUM: MILL FINISH  
HARDWARE: NON-CORROSIVE MATERIALS (UNLESS OTHERWISE SPECIFIED)  
STAINLESS STEEL: BEADBLAST FINISH TYPE 316 S/S HARDWARE

THIS PRODUCT MAY BE INSTALLED ON EITHER A FLAT OR SLOPING ROOF. WHEN INSTALLED ON A SLOPE, THE HINGE SIDE MUST RUN PARALLEL WITH THE SLOPE. IF SLOPE EXCEEDS 30°, ADVISE FACTORY FOR MODIFICATION.

**CUSTOMER:**

**P.O. #:**

**JOB:**

**SALES REP:**

Manufacturers of Doors for Special Services  
**Bilco®** THE BILCO COMPANY  
New Haven, Connecticut 06505

**SINGLE LEAF ROOF SCUTTLE**  
**TYPE S SIZE 3'-0" x 2'-6"**  
WIDTH x LENGTH

QTY	TYPE	METAL
	S-20	STEEL COVER/STEEL FRAME
	S-40	ALUM. COVER/STEEL FRAME
	S-50	ALUM. COVER/ALUM. FRAME
	S-90	STLS STL COVER/STLS STL FRAME

© 08-11-20 THE BILCO COMPANY





**942 N Rampart**

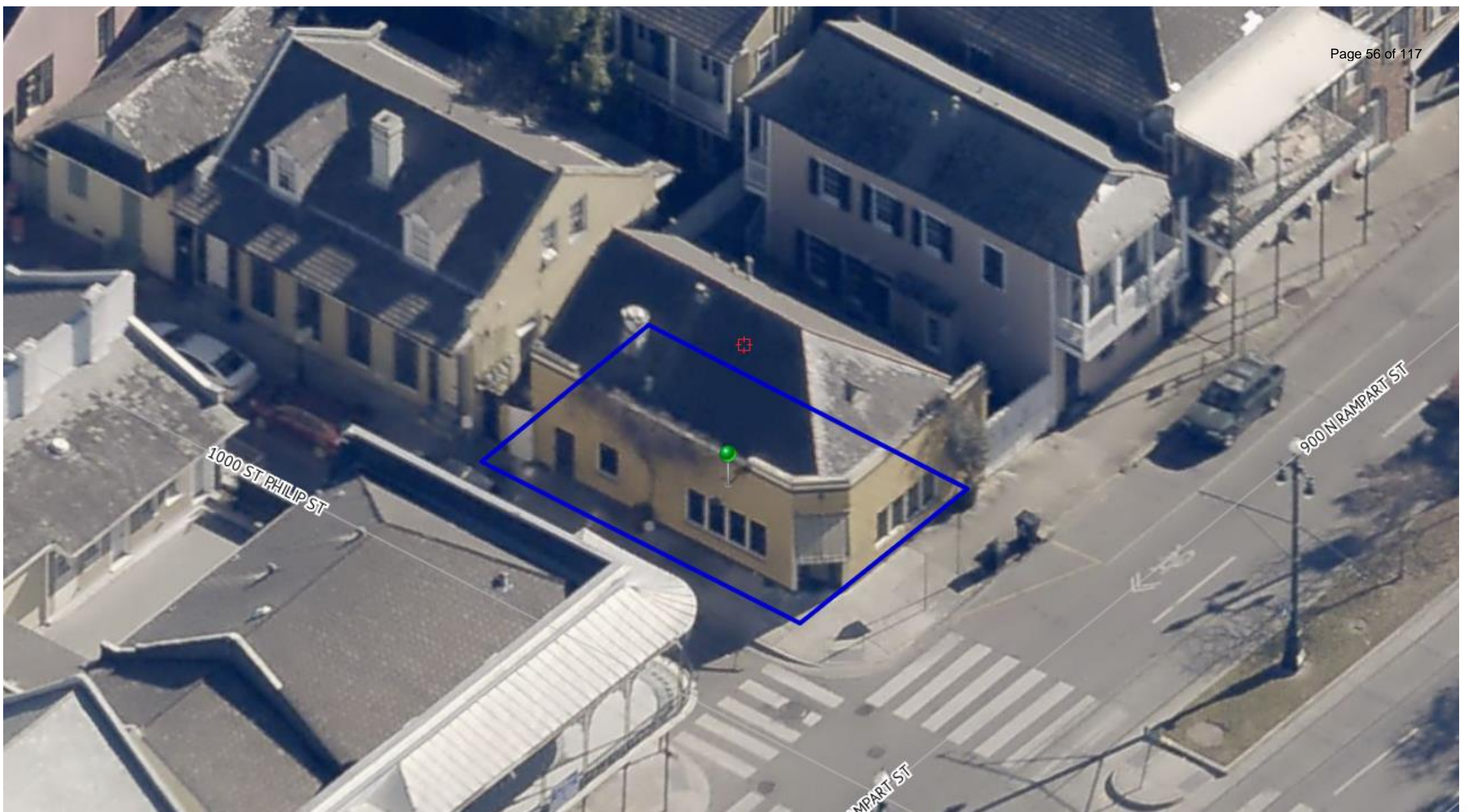


942 N Rampart

VCC Architectural Committee

August 10, 2021





942 N Rampart

VCC Architectural Committee

August 10, 2021







942 N Rampart

VCC Architectural Committee

August 10, 2021





942 N Rampart

VCC Architectural Committee

August 10, 2021





942 N Rampart





942 N Rampart

VCC Architectural Committee

August 10, 2021





942 N Rampart





942 N Rampart





942 N Rampart

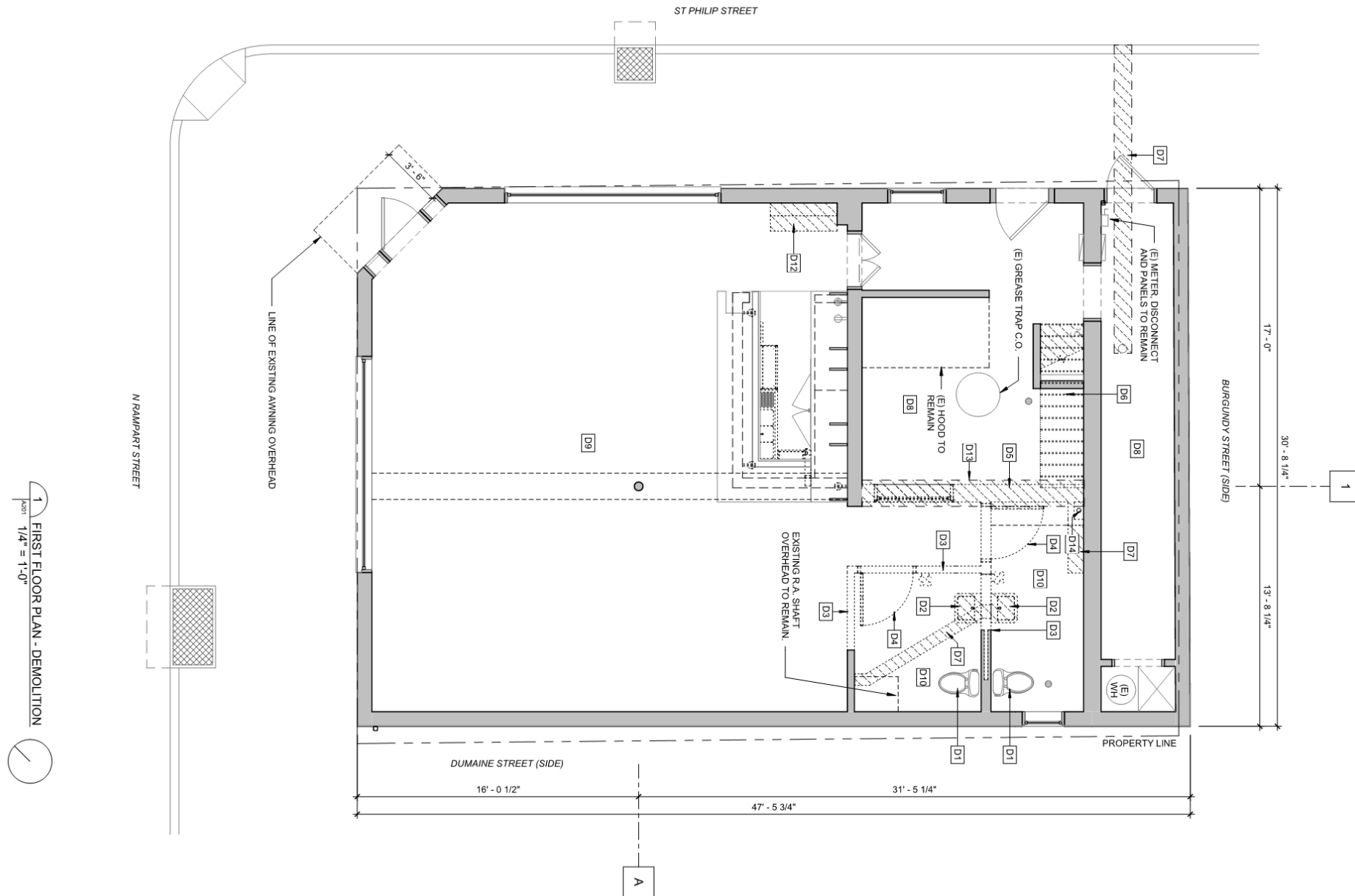




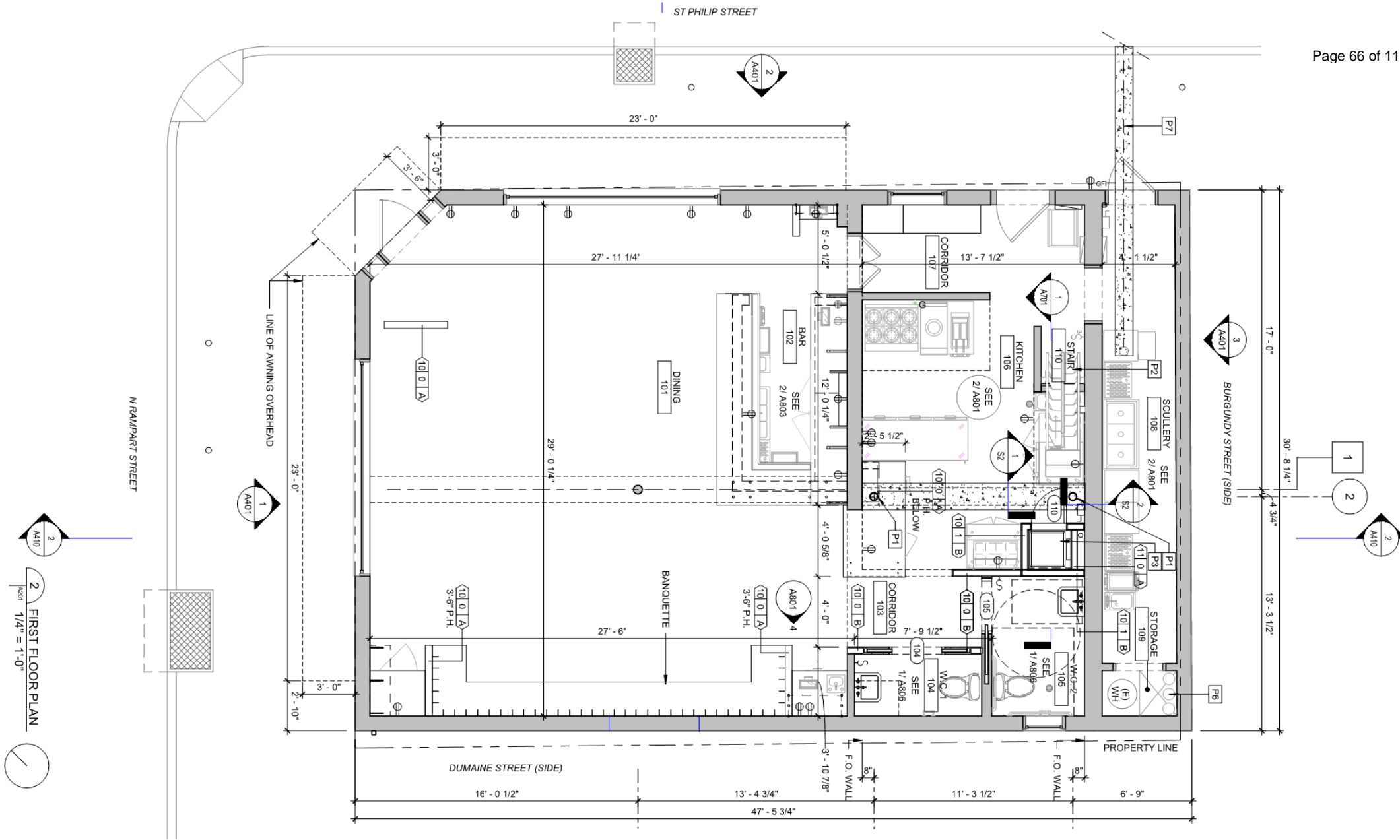
942 N Rampart







- D1 EXISTING WC LOCATION TO REMAIN. REPLACE WC IN NEW WORK.
- D2 REMOVE EXISTING LAVATORY AND ALL PIPING BACK TO CONNECTION POINT.
- D3 REMOVE PORTION OF EXISTING GYPSUM BOARD AND STUD WALL
- D4 REMOVE EXISTING DOOR AND FRAME.
- D5 REMOVE PORTION OF EXISTING LOAD BEARING MASONRY WALL. SEE NEW CONSTRUCTION PLANS FOR STRUCTURAL SUPPORT ABOVE.
- D6 REMOVE EXISTING NON-COMPLIANT WOOD MEZZANINE ACCESS STAIRS
- D7 SAW-CUT EXISTING SLAB FOR NEW WASTE PLUMBING.
- D8 EXISTING QUARRY TILE TO REMAIN
- D9 REMOVE EXISTING TILE AND WOOD FLOORING AT DINING ROOM
- D10 REMOVE EXISTING TILE AT RESTROOMS
- D12 REMOVE EXISTING SHELVING AND RETURN TO OWNER.
- D13 SAW-CUT EXISTING SLAB TO INSTALL NEW FOUNDATION. SEE STRUCTURAL.
- D14 RELOCATE EXISTING VENT STACK IN NEW WORK.
- P1 5" Ø STD. PIPE COLUMN
- P2 ALTERNATING TREAD DEVICE
- P3 DUMBWAITER AND SHAFT.. PROVIDE (2) 2X6 HEADERS AT THREE SIDES OF OPENING AT SECOND FLOOR
- P6 NEW WATER PURIFICATION SYSTEM.
- P7 REPLACE EXISTING 4" (PRESUMED) SEWER LINE FROM CLEANOUT TO A POINT 20'-0" AWAY. CUT AND PATCH EXISTING CONCRETE SLAB AND SIDEWALK.



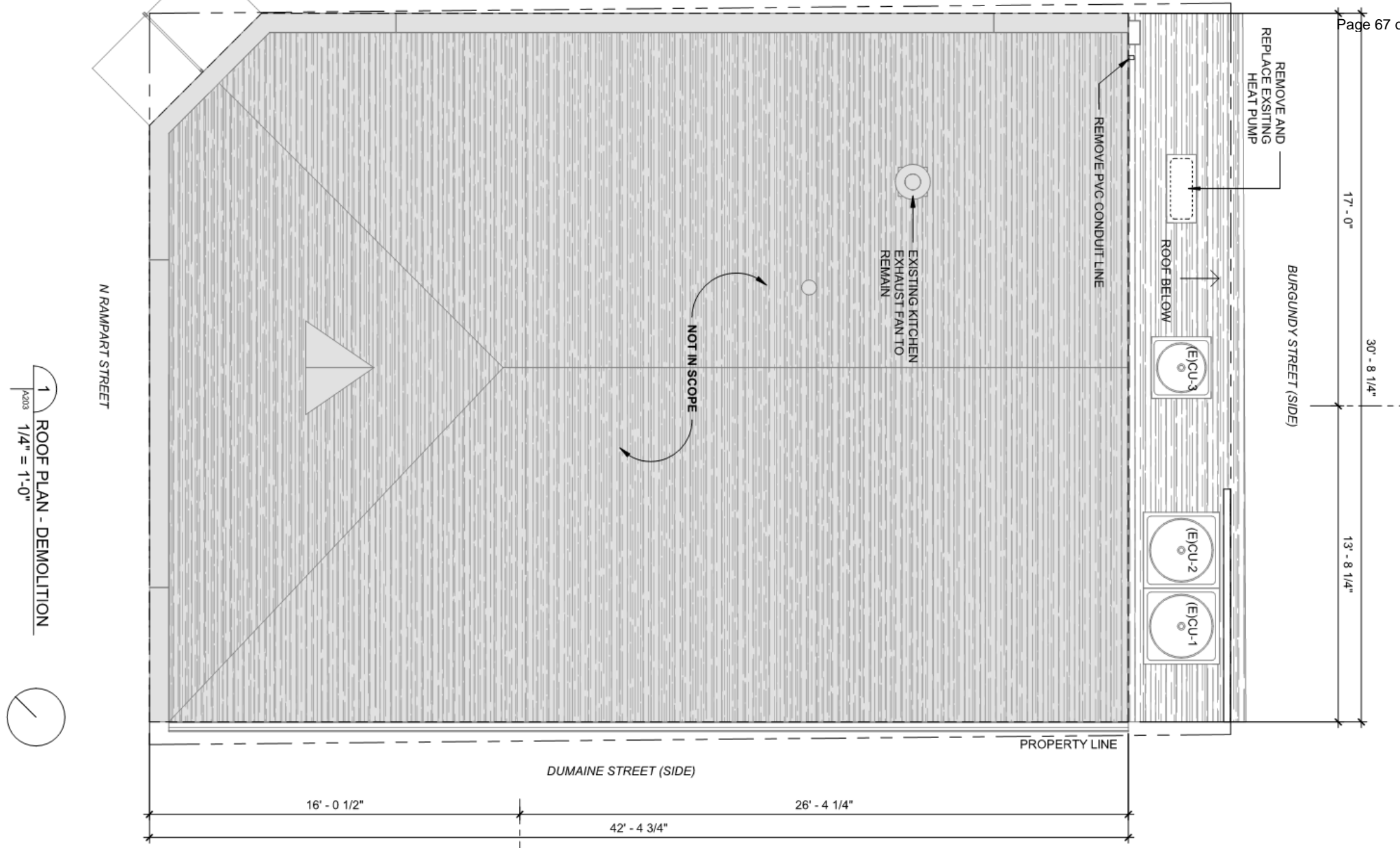
2 FIRST FLOOR PLAN  
 A401 1/4" = 1'-0"

942 N Rampart

VCC Architectural Committee

August 10, 2021





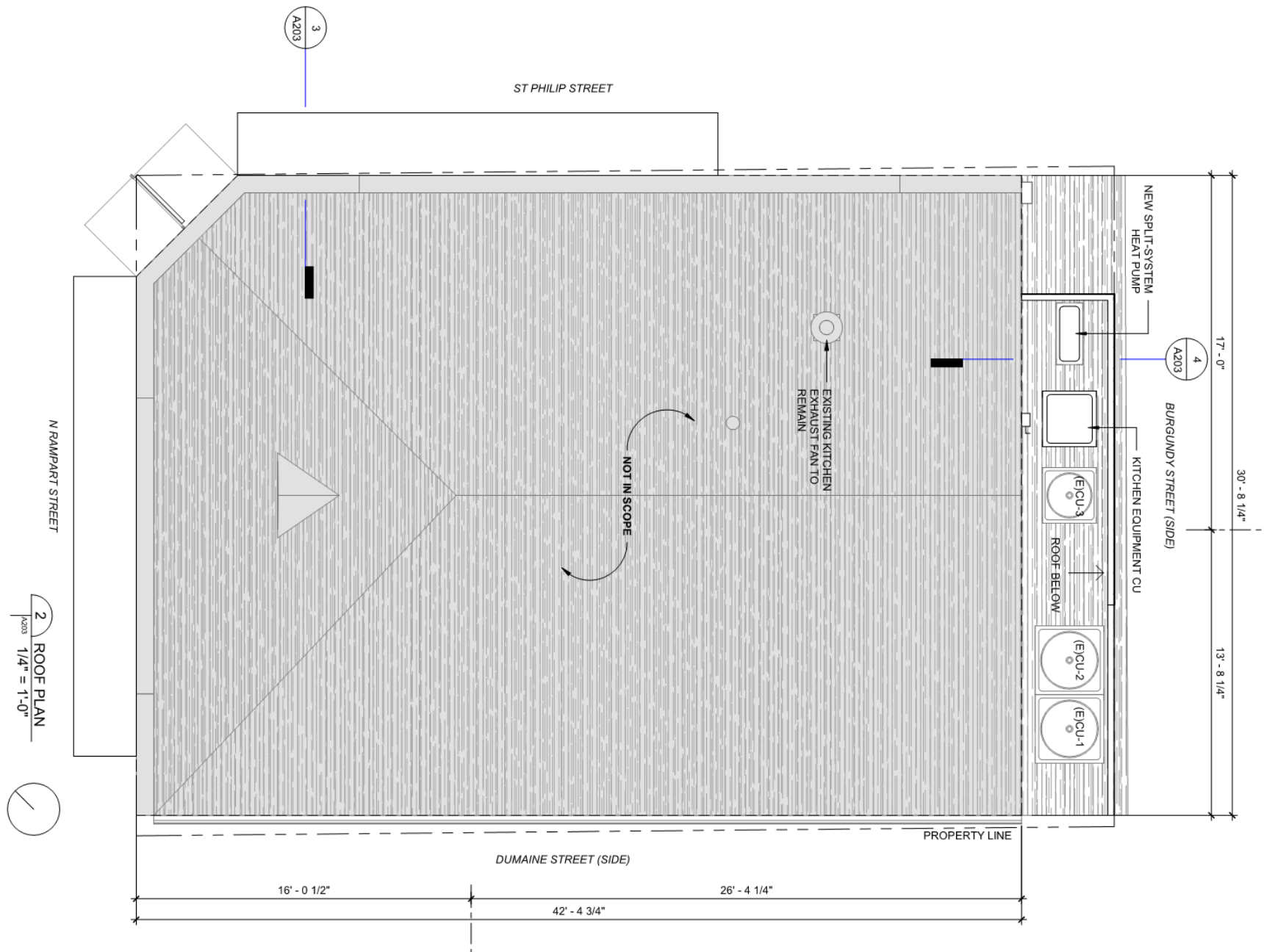
1 ROOF PLAN - DEMOLITION  
 1/4" = 1'-0"

942 N Rampart

VCC Architectural Committee

August 10, 2021



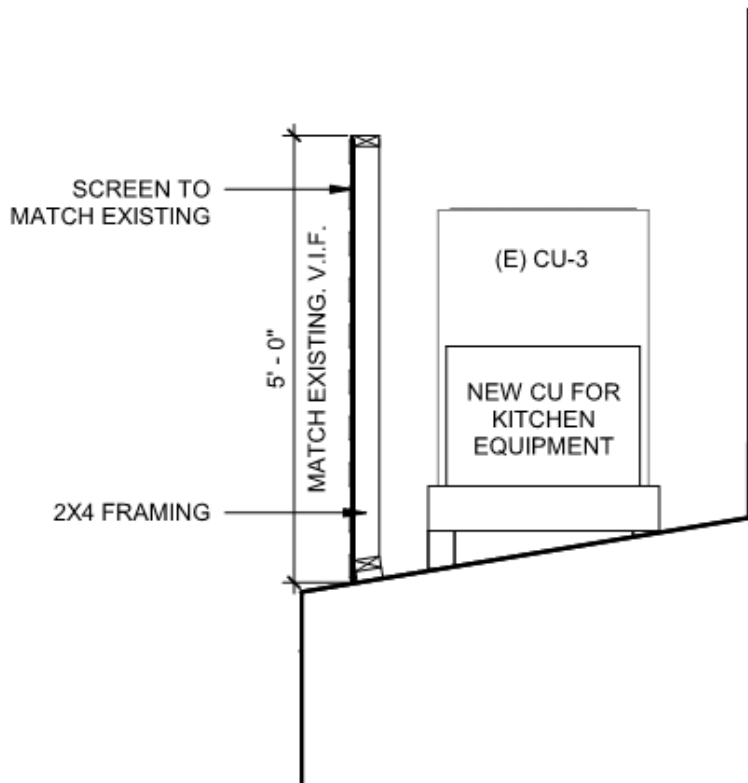


942 N Rampart

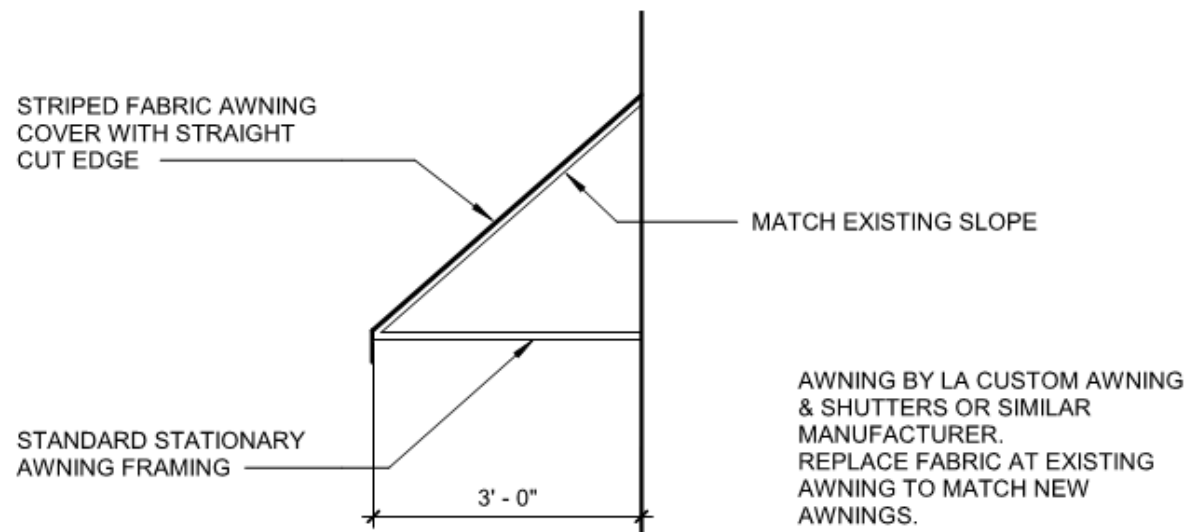
VCC Architectural Committee

August 10, 2021

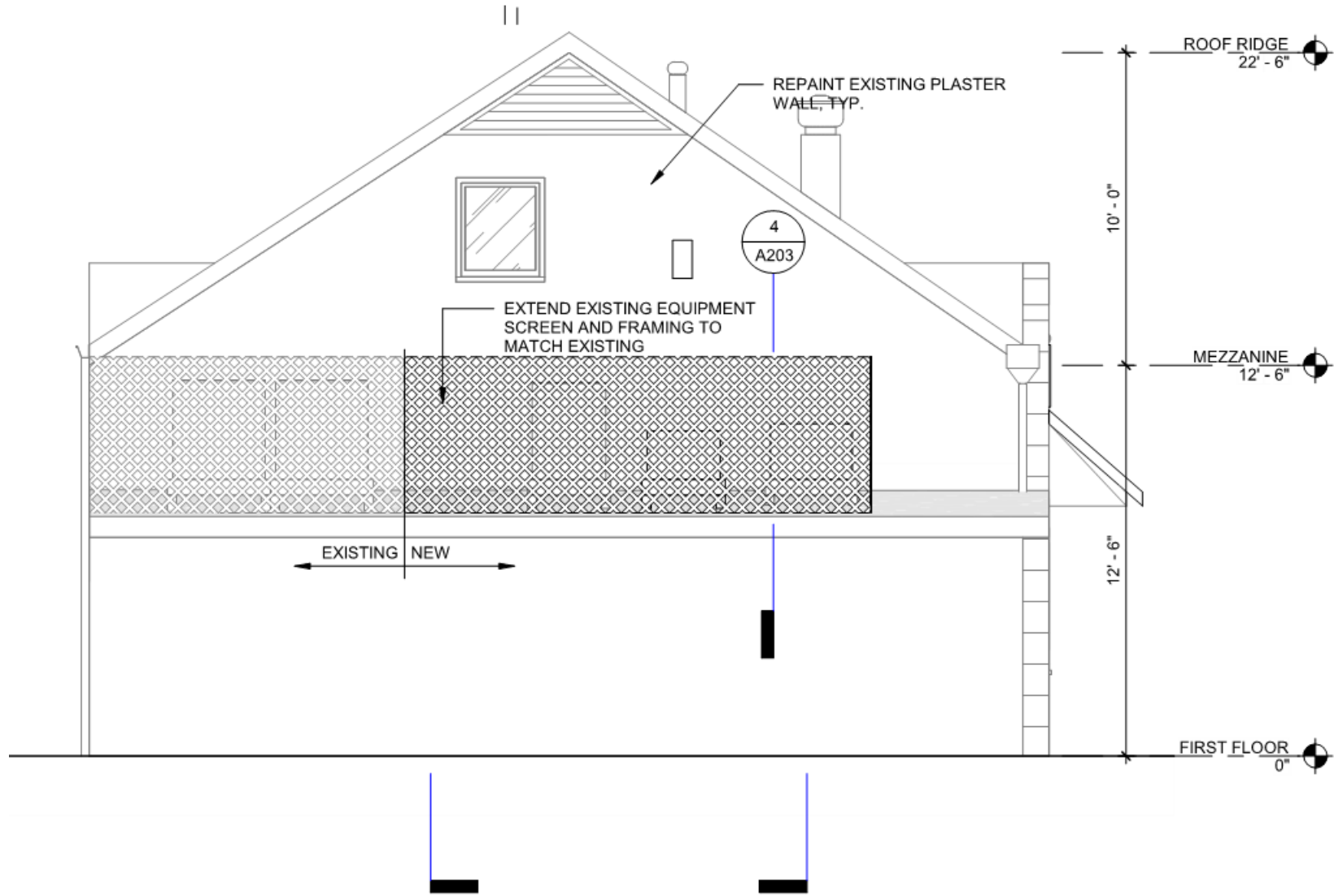




4 SECTION THRU MECHANICAL SCREEN  
 A202 | A203 1/2" = 1'-0"

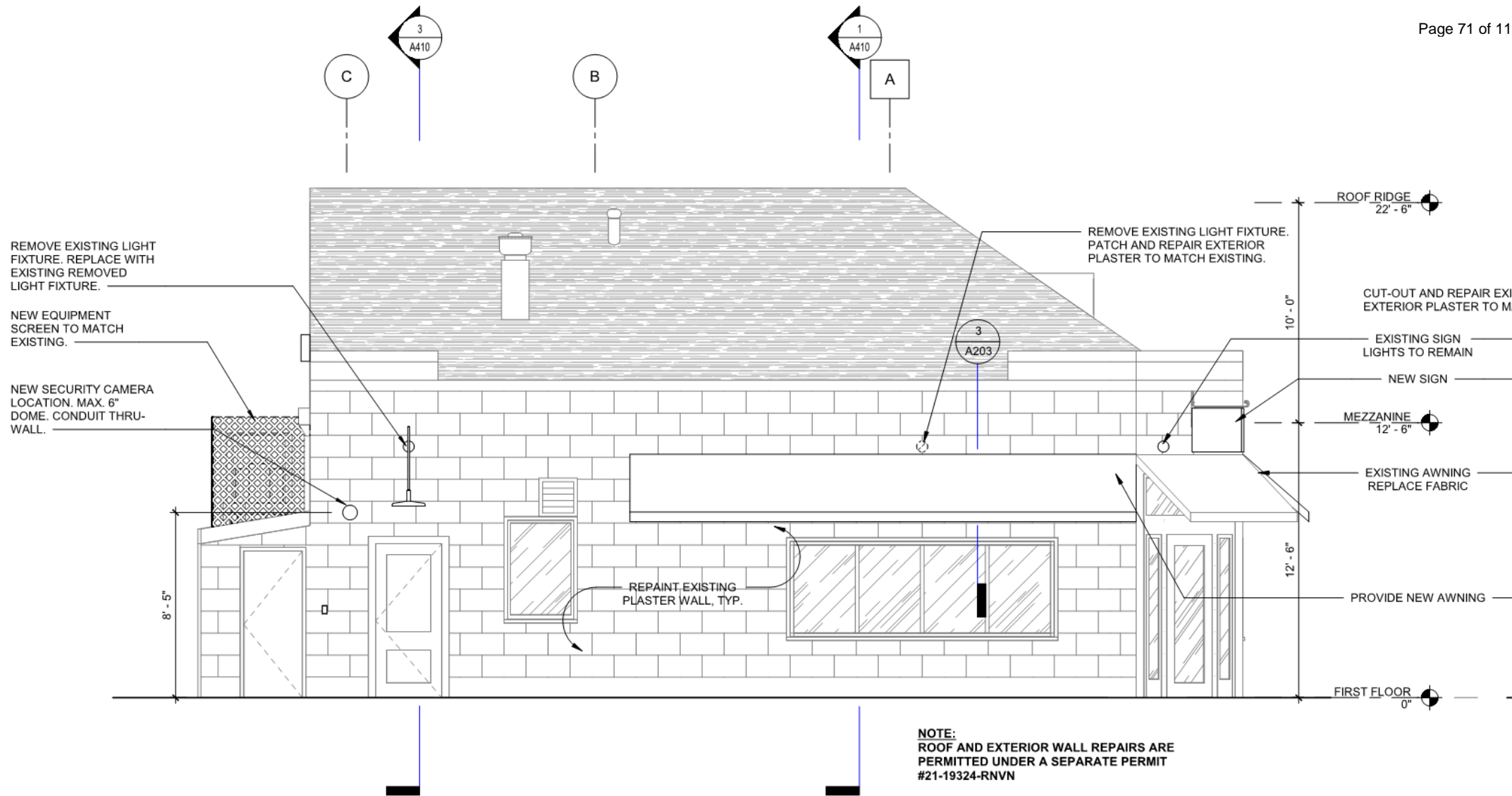


3 SECTION THRU EXTERIOR AWNING  
 A203 | A203 1/2" = 1'-0"



3 SOUTH EXTERIOR ELEVATION  
A001/A401 1/4" = 1'-0"





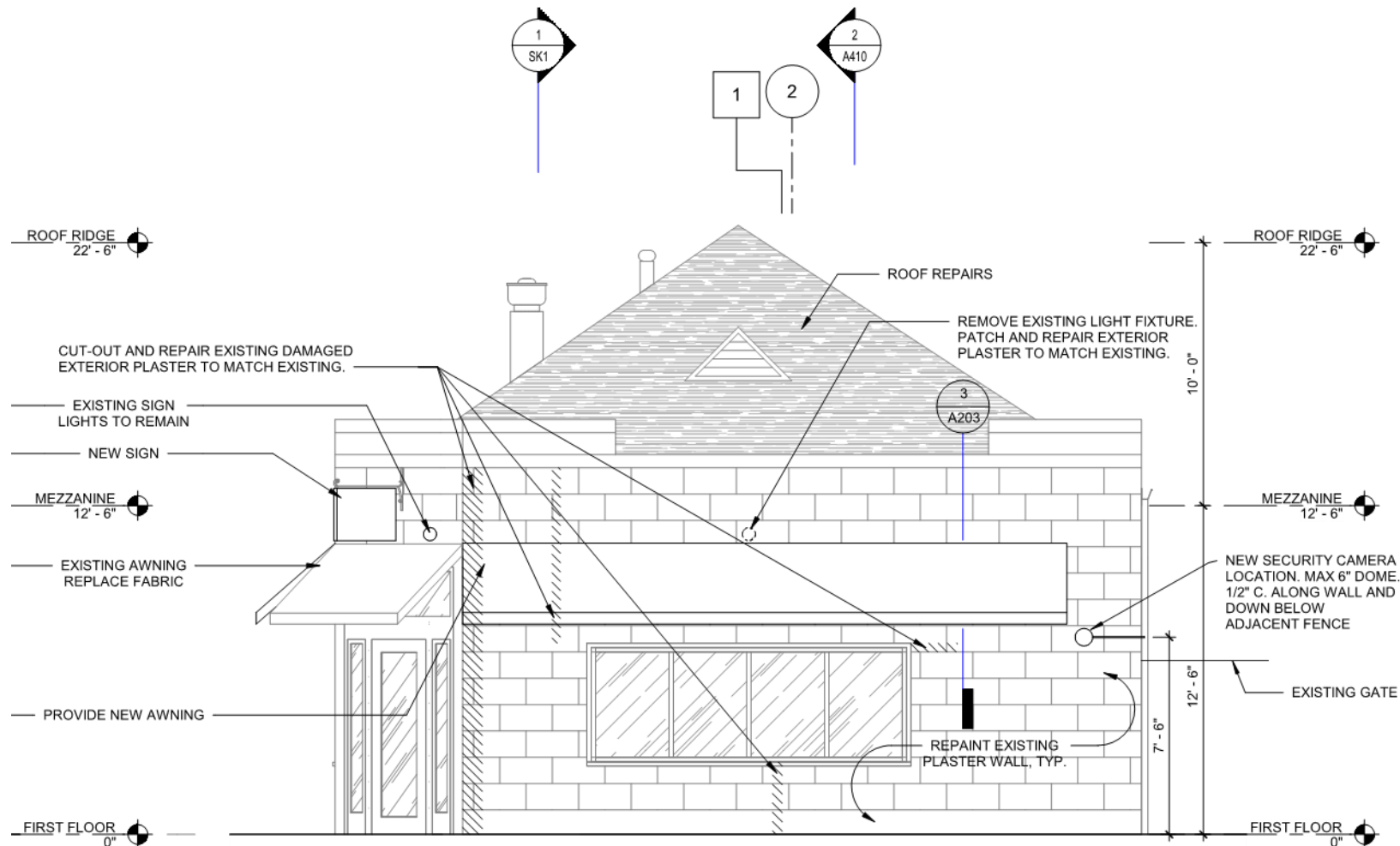
2 EAST EXTERIOR ELEVATION  
 A001/A401 1/4" = 1'-0"

942 N Rampart

VCC Architectural Committee

August 10, 2021

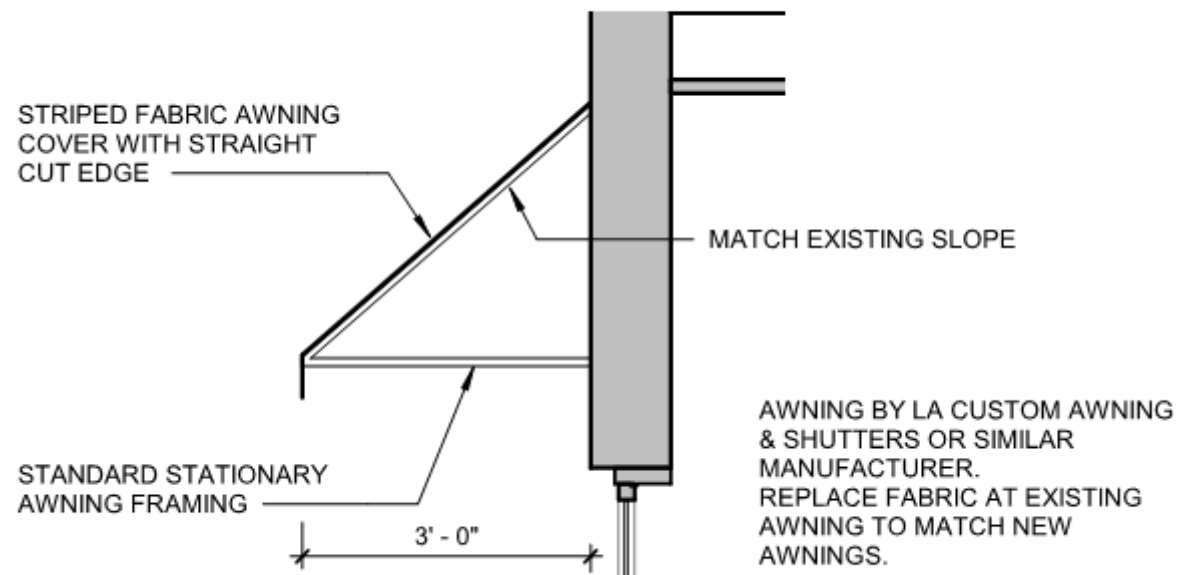




1 NORTH EXTERIOR ELEVATION  
A001/A401 1/4" = 1'-0"



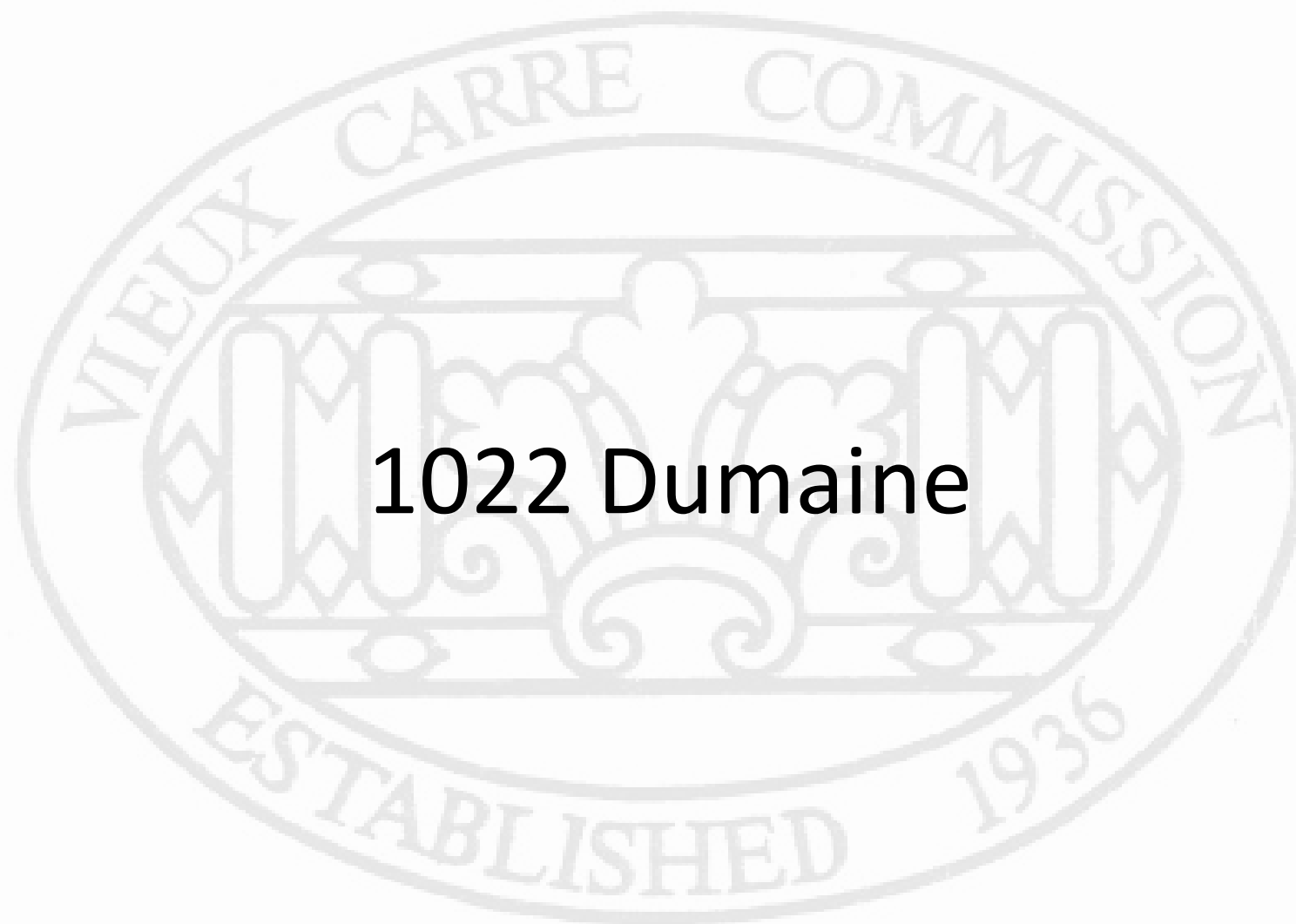




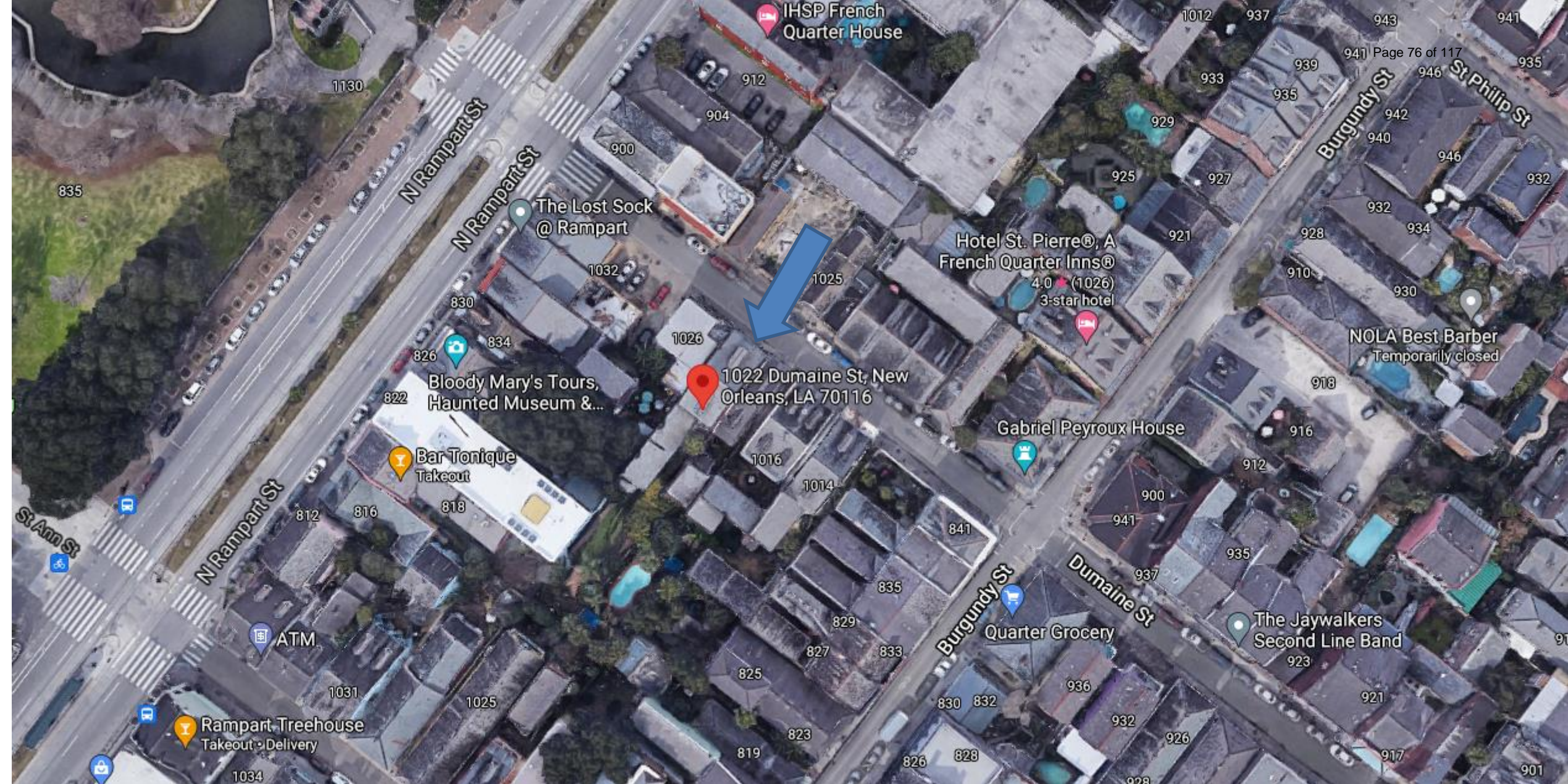


**208 Bienville**

**Deferral Requested by Applicant**



**1022 Dumaine**



1022 Dumaine

VCC Architectural Committee

August 10, 2021





1022 Dumaine

VCC Architectural Committee

August 10, 2021





1022 Dumaine

VCC Architectural Committee

August 10, 2021





1022 Dumaine

VCC Architectural Committee

August 10, 2021





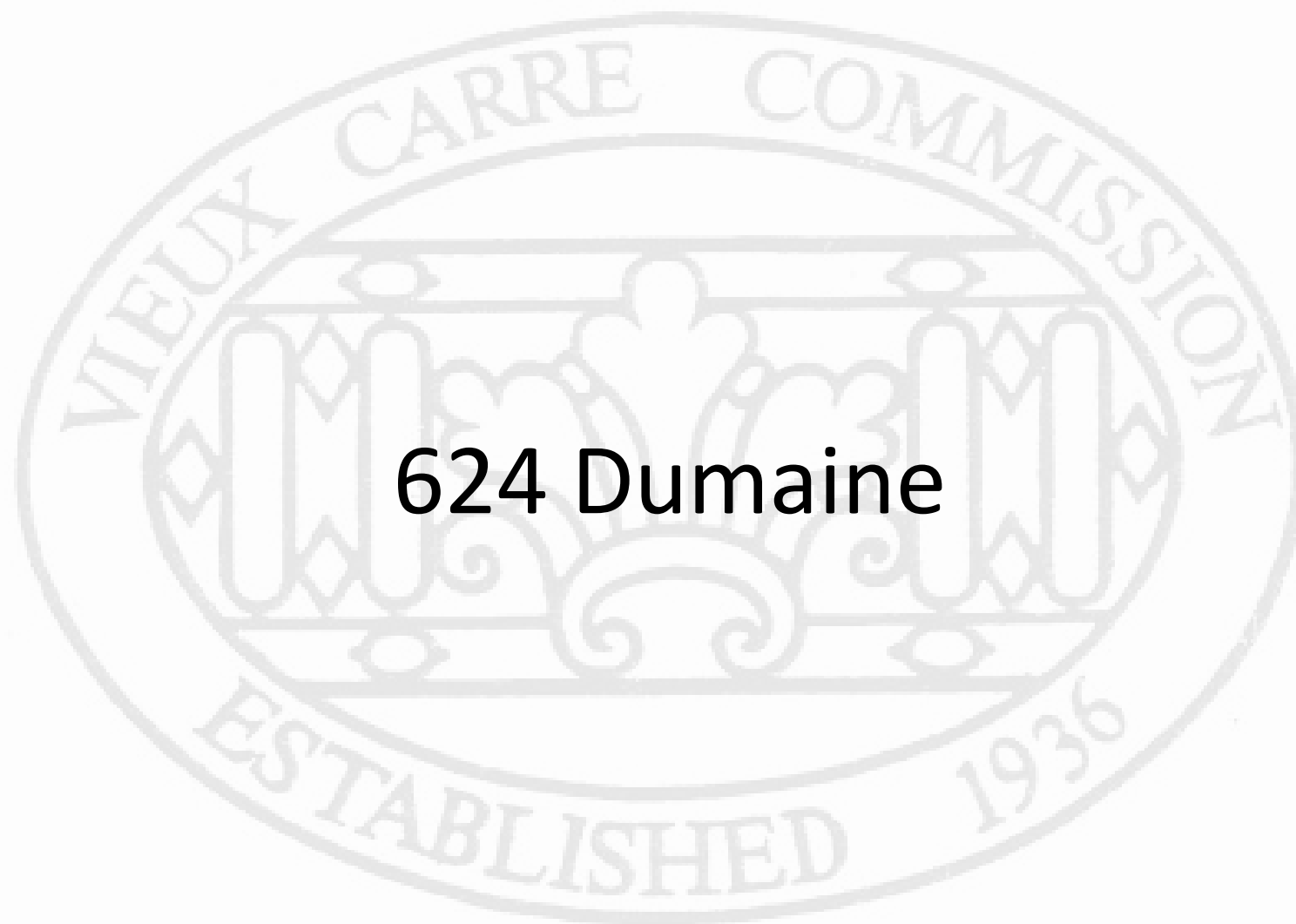
1022 Dumaine

VCC Architectural Committee

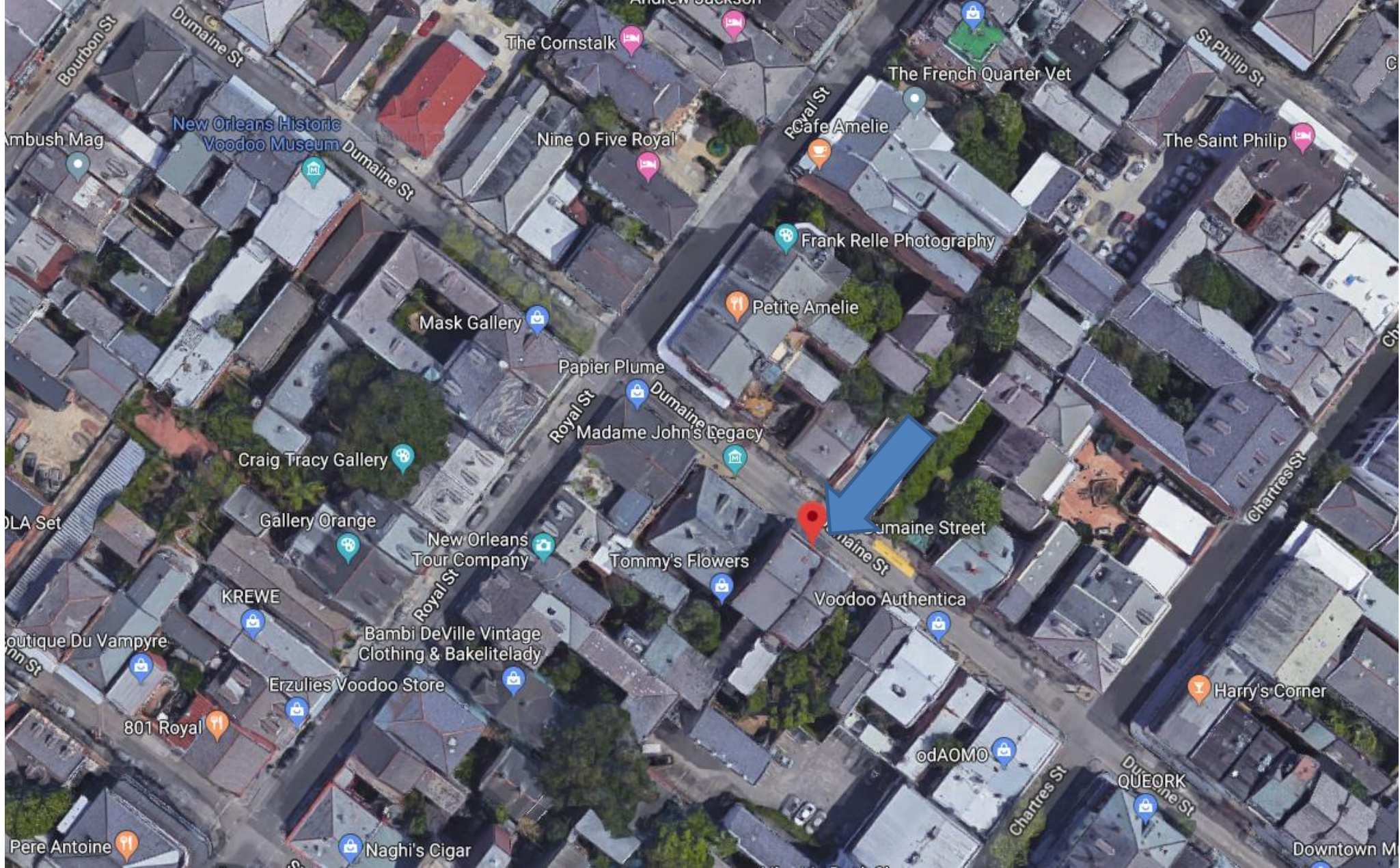
August 10, 2021







**624 Dumaine**



624 Dumaine

VCC Architectural Committee

August 10, 2021





624 Dumaine

VCC Architectural Committee

August 10, 2021





624 Dumaine

VCC Architectural Committee

August 10, 2021





624 Dumaine

VCC Architectural Committee

August 10, 2021





624 Dumaine

VCC Architectural Committee

02 15 2019

August 10, 2021





624 Dumaine

VCC Architectural Committee

02 15 2019

August 10, 2021





624 Dumaine

VCC Architectural Committee

August 10, 2021







02 15 2019

624 Dumaine

VCC Architectural Committee

August 10, 2021





624 Dumaine

VCC Architectural Committee

August 10, 2021





624 Dumaine

VCC Architectural Committee

02 15 2019

August 10, 2021





624 Dumaine

VCC Architectural Committee

August 10, 2021





624 Dumaine

VCC Architectural Committee

August 10, 2021





624 Dumaine

VCC Architectural Committee

05 13 2021

August 10, 2021





624 Dumaine

VCC Architectural Committee

05 13 2021

August 10, 2021





624 Dumaine

VCC Architectural Committee

05 13 2021

August 10, 2021







624 Dumaine

VCC Architectural Committee

August 10, 2021





624 Dumaine

VCC Architectural Committee

August 10, 2021





624 Dumaine

VCC Architectural Committee

August 10, 2021





624 Dumaine

VCC Architectural Committee

August 10, 2021





08 05 2021

624 Dumaine

VCC Architectural Committee

August 10, 2021





624 Dumaine

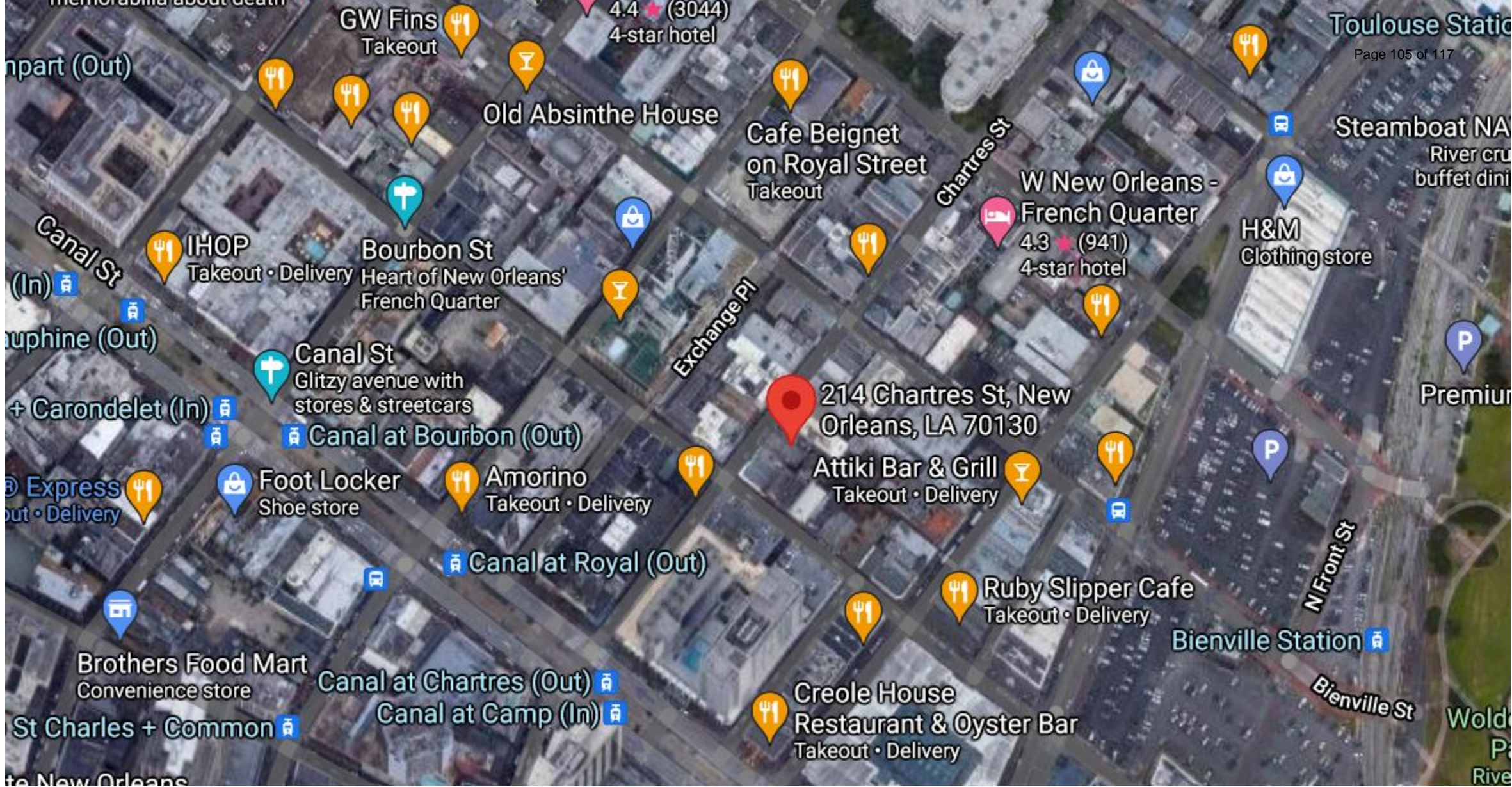
VCC Architectural Committee

August 10, 2021





# 214 Chartres



214 Chartres







214 Chartres

VCC Architectural Committee

August 10, 2021





214 Chartres

VCC Architectural Committee

August 10, 2021





214 Chartres

VCC Architectural Committee

August 10, 2021





214 Chartres

VCC Architectural Committee

August 10, 2021





214 Chartres

VCC Architectural Committee

August 10, 2021





214 Chartres

VCC Architectural Committee

August 10, 2021





214 Chartres

VCC Architectural Committee

August 10, 2021





214 Chartres – existing light fixture

VCC Architectural Committee

August 10, 2021







**Color Options**  
 Brown Oxidation  
 Black Oxidation  
 Verdigris Oxidation  
 \* Powder coating available

**Power Options**  
 Gas - Natural Gas or Propane  
 manual burner or  
 110v Igniter Systems  
 Electric - Medium Base  
 Single Double or Triple  
 Candelabra

G = Backplate (LxWxD)

\*gas to exit bottom of lantern 1/4" flare fitting (standard) Inside gas line available  
 \*electric for lantern and for igniter exit back of lantern behind backplate

		12"	15"	18"	21"	24"	28"
<b>French Quarter Copper Lantern</b>	<b>A</b>	12.5	15.25	18	20.75	23	29.25
	<b>B</b>	2.75	1.75	1.75	1.75	1.75	1.5
	<b>C</b>	7.25	8.25	10.5	13	13.75	16.375
Bracket Type = <b>Standard Wall Mount</b>	<b>D</b>	4	5.75	6.5	7.5	8	11.5
	<b>E</b>	4	4.75	5	6	6	6
	<b>F</b>	4.5	4.75	6.5	7.25	9	11.75
	<b>G</b>	4x4	6x5x1	6x5x1	9.5x6x1	9.5x6x1	9.5x6x1

Gas Light Pro LLC Baton Rouge, La (225) 295-9937





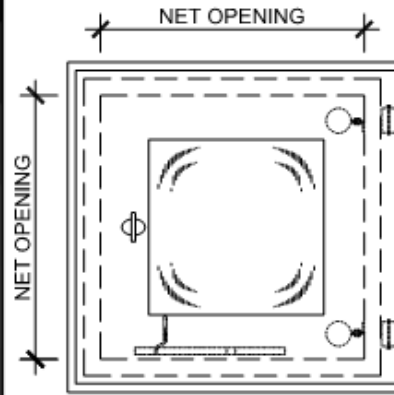
214 Chartres

VCC Architectural Committee

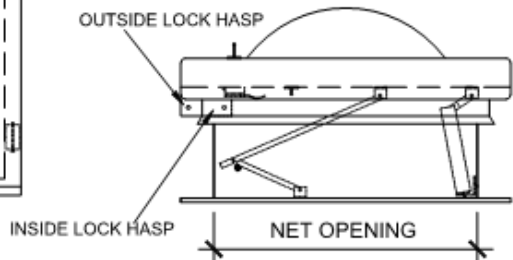
August 10, 2021



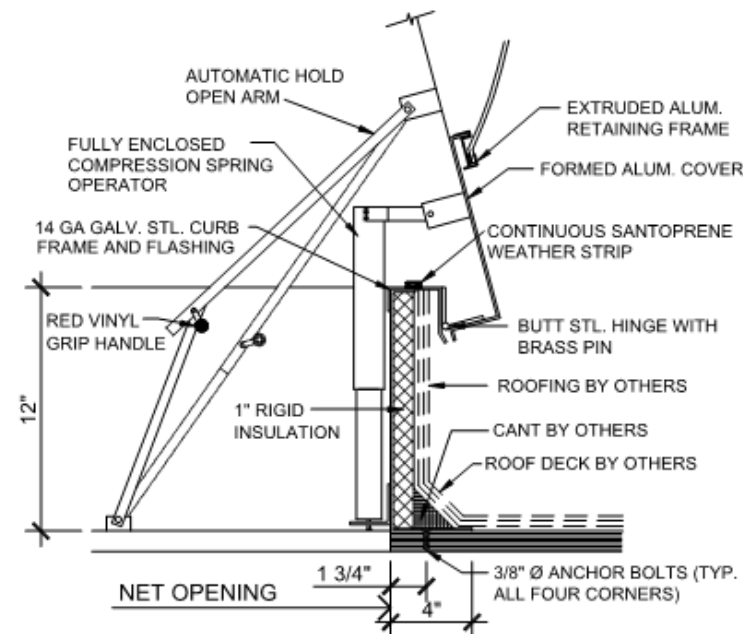
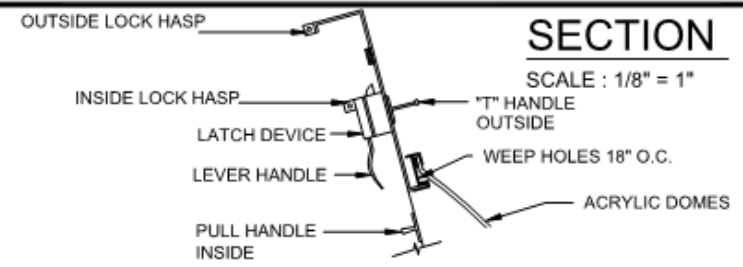
**MODEL - RHD**



**PLAN VIEW**  
NOT TO SCALE



**SIDE VIEW**  
NOT TO SCALE



- MODEL : RHD-
- NET OPENING :
- UNITS REQUIRED :
- DOMECOLOR :
- LID FINISH :
- FRAME FINISH :

**SPECIFICATIONS :**

ALL PARTS SHALL BE NEATLY FORMED AND FABRICATED WITH ALL JOINTS AND SEAMS COMPLETELY WELDED TO INSURE WATER TIGHTNESS . ALUMINUM COVER, COVER LINER TO BE MILL FINISH. CURB FRAME AND CURB TO BE PRIME PAINTED. UNIT SHALL BE SUPPLIED COMPLETELY ASSEMBLED AND READY FOR INSTALLATION. UNIT WILL OPEN TO MAXIMUM 75° POSITION. ACTUAL NUMBER OF SPRING OPERATORS TO BE DETERMINED AS NEEDED FOR SMOOTH OPERATION OF UNIT.

**Lane-Aire MANUFACTURING CORP.**  
2820 El Presidio Street, Carson, California 90749  
(323) 636-2324 - FAX (310) 604-3395

JOB	SHEET
ARCH.	
CONTR.	DWG. NO.
SUB. CONTR.	
DRAWN BY AC-	DATE:



## Skylights

Historic skylights are occasionally found at a warehouse or commercial building. A skylight can dramatically alter the appearance of a roof. Therefore, an appropriate location for a new skylight is fairly limited. Occasionally, a skylight is approved for a shotgun or townhouse, on a roof slope where it can be visually minimized or on a low-sloped or flat roof where it will be concealed behind a parapet.

If a new skylight is approved to be installed on a sloped roof building, it may be fixed or operational. It should be installed in a manner that:

- Minimizes its visibility from all location
- Minimizes changes to existing roof framing, generally with the long dimension running down the roof slope, at least 12-inches below the roof ridge
- Minimizes the number of skylights, such that it comprises a maximum amount of 3-percent of a roof slope, and is arranged in an orderly fashion
- Runs parallel to, and no more than 8-inches above the plane of the roof surface; has clear or tinted glazing for a dark exterior appearance and has the exterior framing painted or colored to match the roof material
- Does not have a domed, angled or other raised feature



## Roof Hatches

A roof hatch is similar in form to a skylight but instead of glazing, it has a solid removable or hinged cover that allows access to the roof. A roof hatch should be installed so that it is not visible from the street and its visibility is minimized from any location. It should also be located at least 12-inches below the roof ridge, parallel to and no more than 8-inches above the plane of the roof surface, and have either a copper finish or a finish painted to match the roof material.

*A roof hatch should be as small as possible, no more than 8-inches above the plane of the roof, run parallel to the roof slope and finished to match the roof color.*

