



Vieux Carré Commission Meeting

Wednesday,

May 2, 2018



Chairman's Report



Director's Report



Other Business



825-27 Barracks

Vieux Carré Commission

February 7, 2018





515-541 bourbon

Vieux Carré Commission

February 7, 2018





740 Conti

Vieux Carré Commission

February 7, 2018





911 conti

Vieux Carré Commission

February 7, 2018





201 Dauphine

Vieux Carré Commission

February 7, 2018





415 Dauphine



1125-27 Dauphine

Vieux Carré Commission

February 7, 2018





320 Decatur





717 Iberville





608-12 N Rampart

Vieux Carré Commission

February 7, 2018





920 N Rampart

Vieux Carré Commission

February 7, 2018





717 Orleans

Vieux Carré Commission

February 7, 2018





617-19 St Ann





627 St Ann





712-714 St Ann

Vieux Carré Commission

February 7, 2018





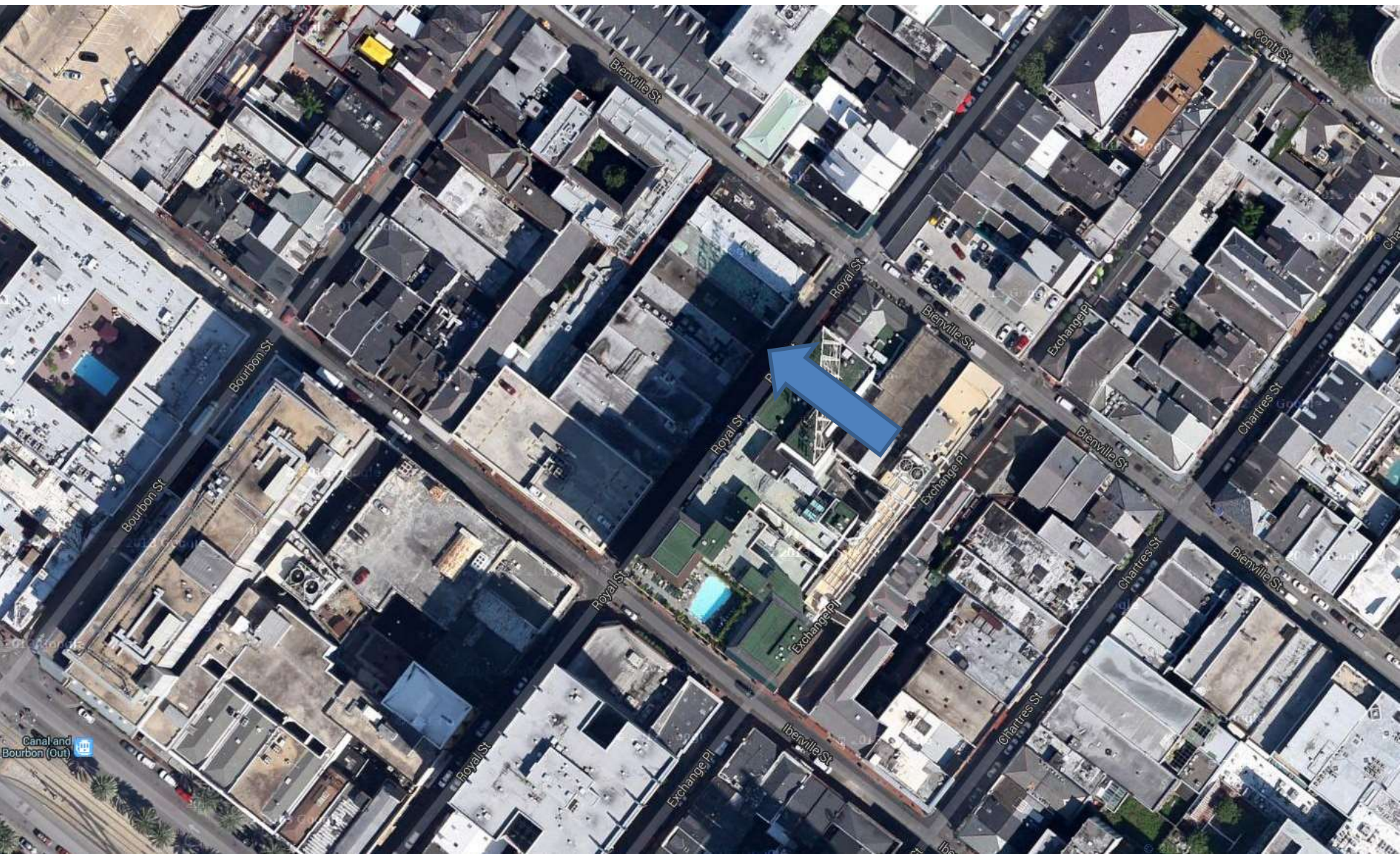
919 St Ann



Old Business

229 Royal





229 Royal

Vieux Carré Commission

May 2, 2018





1963

229 Royal

Vieux Carré Commission

May 2, 2018





229 Royal

Vieux Carré Commission

May 2, 2018





229 Royal

Vieux Carré Commission

May 2, 2018





229 Royal

Vieux Carré Commission

May 2, 2018



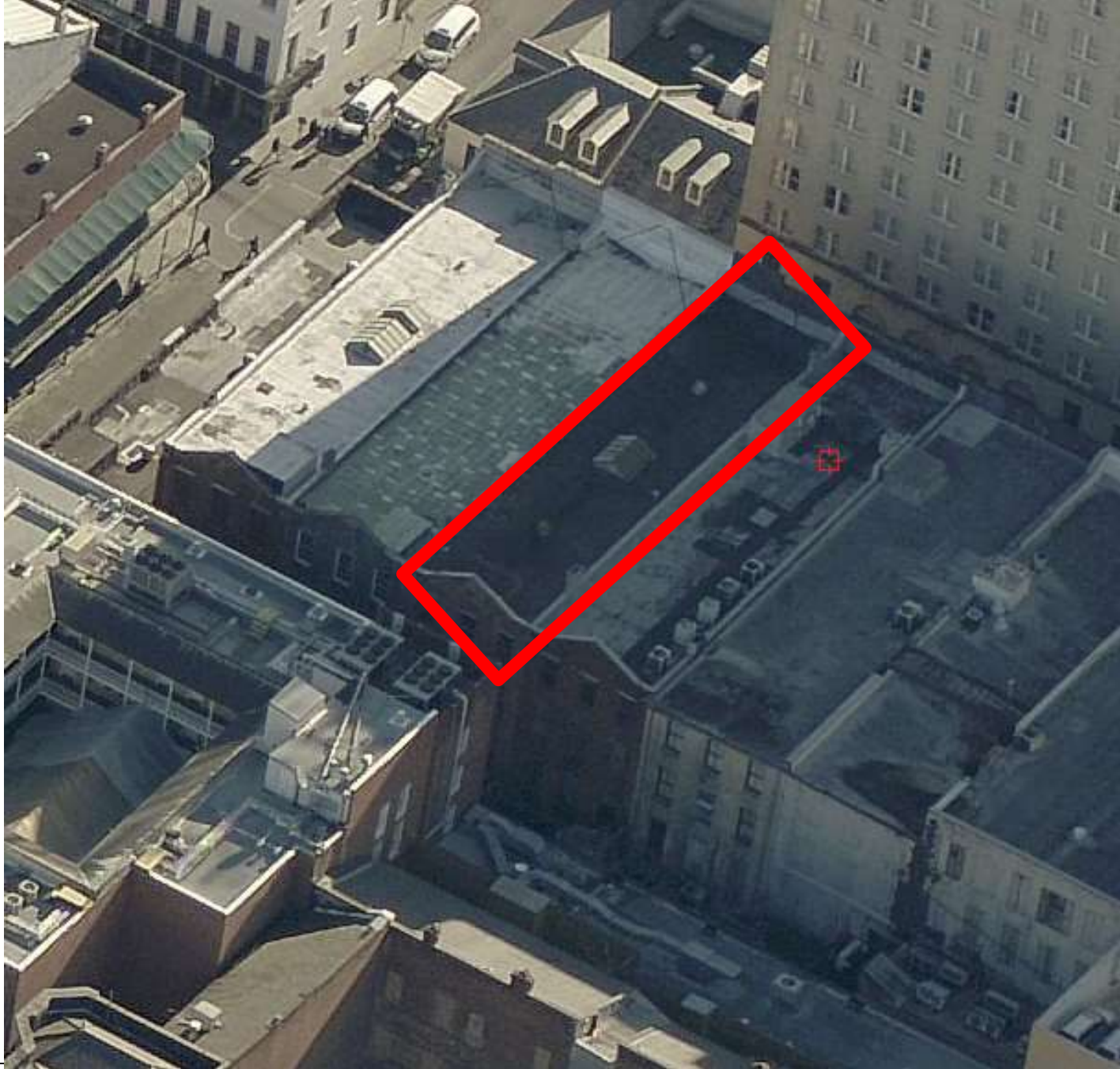


229 Royal

Vieux Carré Commission

May 2, 2018



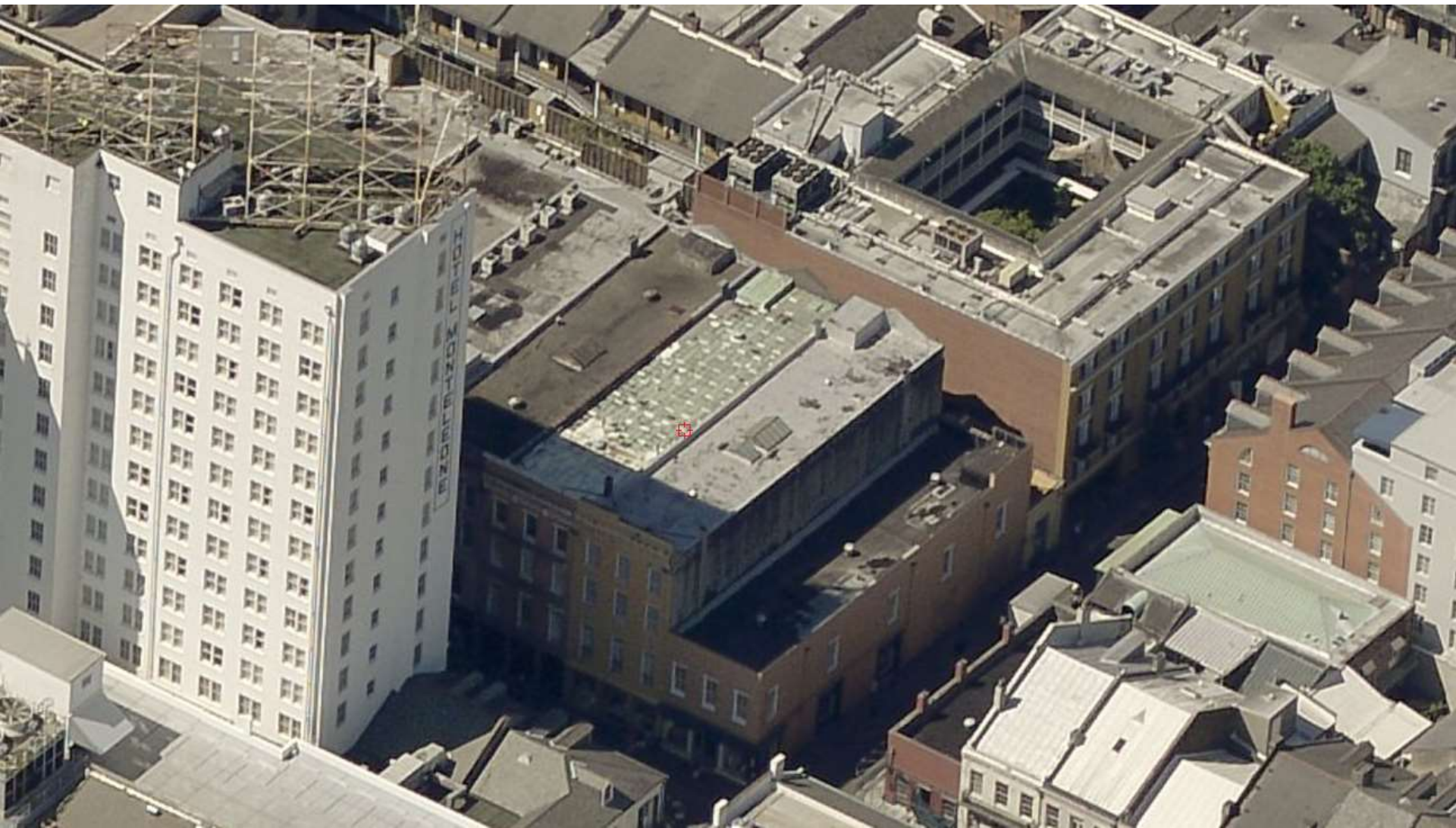


229 Royal

Vieux Carré Commission

May 2, 2018





229 Royal

Vieux Carré Commission

May 2, 2018





02 06 2018

229 Royal

Vieux Carré Commission

May 2, 2018





229 Royal

Vieux Carré Commission

May 2, 2018





229 Royal

Vieux Carré Commission

May 2, 2018





02 06 2018

229 Royal

Vieux Carré Commission

May 2, 2018





02 06 2018

229 Royal

Vieux Carré Commission

May 2, 2018





02 06 2018

229 Royal

Vieux Carré Commission

May 2, 2018





229 Royal

Vieux Carré Commission

May 2, 2018





02 06 2018

229 Royal

Vieux Carré Commission

May 2, 2018





02 06 2018

229 Royal

Vieux Carré Commission

May 2, 2018





02 06 2018

229 Royal

Vieux Carré Commission

May 2, 2018





02 06 2018

229 Royal

Vieux Carré Commission

May 2, 2018





02 06 2018

229 Royal

Vieux Carré Commission

May 2, 2018





229 Royal

Vieux Carré Commission

May 2, 2018



ALTERATIONS TO 229 ROYAL ST. 229 ROYAL STREET NEW ORLEANS, LOUISIANA



320 BARBOUR STREET
NEW ORLEANS, LA 70119
504.566.0838
504.566.0837 FAX
504.566.0837 FAX

GENERAL NOTES:

PROJECT ADDRESS
229 ROYAL STREET
NEW ORLEANS, LA 70119

PROJECT DESCRIPTION
THE SCOPE OF THE PROJECT IS TO RENOVATE AN EXISTING FOUR STORY STRUCTURE LOCATED IN THE FRENCH QUARTER. THE SCOPE OF WORK INCLUDES THE ENTIRE STRUCTURE. THE WORK TO BE PERFORMED INCLUDES INTERIOR LAYOUT MODIFICATIONS, NEW KITCHEN EQUIPMENT AND NEW INTERIOR FINISHES. PLUMBING, HVAC AND ELECTRICAL WORK SHALL BE PERFORMED. NEW SPRINKLER SYSTEM AND FIRE ALARM TO BE INSTALLED WITH NO STRUCTURAL WORK BEING DONE.

ZONING
RS-2 CITY OF NEW ORLEANS, VCC-2

BUILDING AREA
FIRST FLOOR: 1,149 GROSS SQ. FT.
SECOND FLOOR: 2,919 GROSS SQ. FT.
THIRD FLOOR: 2,832 GROSS SQ. FT.
FOURTH FLOOR: 2,794 GROSS SQ. FT.
ROOF: 2,794 GROSS SQ. FT.

OCCUPANCY
A. CLASSIFICATION
FIRST & SECOND FLOORS: ASSEMBLY GROUP A-2
THIRD FLOOR: BUILDING GROUP 2
FOURTH FLOOR: ASSEMBLY GROUP A-3
ROOF: ASSEMBLY

B. LOAD
FIRST FLOOR RESTAURANT MAX: 92 SEATS
ACTUAL SEAT COUNT: 75 SEATS
SECOND FLOOR RESTAURANT MAX: 110 SEATS
ACTUAL SEAT COUNT: 110 SEATS

CONSTRUCTION TYPE
IBC CLASSIFICATION: TYPE IIB

ARCHITECTURAL APPLICABLE CODES
INTERNATIONAL BUILDING CODE (IBC) - 2015 EDITION
LIFE SAFETY CODE (NFPA 101) - 2015 EDITION

EXIT REQUIREMENTS
COMMON PATH SHALL NOT EXCEED: 20 FT
ALLOWABLE DEAD END DISTANCE: 20 FT
ALLOWABLE TRAVEL DISTANCE: 250 FT

VCC RATING
GREEN

PROJECT DIRECTORY:

ARCHITECT
JOHN C. WILLIAMS ARCHITECTS, LLC
824 BARBOUR STREET
NEW ORLEANS, LA 70113
504.566.0838
504.566.0837 FAX
JOHN C. WILLIAMS
jwilliams@williamsarchitects.com
MARK HECK
mheck@williamsarchitects.com

ELECTRICAL ENGINEER
ALL-TEMP REGISTRATION SERVICES
271 HIGHWAY 1066
MADISONVILLE, LA 70447
LOUIS P. VERGES
lvverges@alltempexperts.com

MECHANICAL ENGINEER
MCC
5330 NORTH CAUSEWAY BOULEVARD
METAIRE, LA 70002
504.830.4210
HERB SCHAEFFER
herb@mc2group.com

STRUCTURAL ENGINEER
WALTER ZEHNER & ASSOCIATES INC
4702 TOULOUSE STREET
NEW ORLEANS, LA 70119
504.488.1442
504.488.1448 FAX
WALTER ZEHNER
walterzehner@msn.com

SHEET INDEX

ARCHITECTURAL
T000 COVER SHEET
A101 FIRST FLOOR CROSS EASEMENT PLAN
A102 SECOND FLOOR CROSS EASEMENT PLAN
A201 EXISTING, PROPOSED & DEMOLITION FIRST FLOOR PLANS
A202 EXISTING, PROPOSED & DEMOLITION SECOND FLOOR PLANS
A203 EXISTING, PROPOSED & DEMOLITION THIRD FLOOR PLANS
A204 EXISTING, PROPOSED & DEMOLITION FOURTH FLOOR PLANS
A205 EXISTING, PROPOSED & DEMOLITION ROOF PLANS
A301 EXISTING & PROPOSED ROYAL ST ELEVATIONS
A302 EXISTING & PROPOSED BOURBON ST ELEVATIONS
A401 PROPOSED BUILDING SECTIONS
A402 2ND FLOOR ROOF SECTIONS
A501 FINISH AND DOOR SCHEDULES
A502 WINDOW TYPE ELEVATIONS
A503 WINDOW DETAILS

STRUCTURAL
S1.1 FRAMING PLANS
S1.2 FRAMING PLANS
S2.0 FRAMING SECTION DETAILS
S3.0 FRAMING SECTION DETAILS

MECHANICAL
MPS00 MECHANICAL ALTERATIONS

ELECTRICAL
E5.0 ROOF TOP LIGHTING PLAN

SYMBOL LEGEND

	ELEVATION TAG
	SECTION TAG
	ROOM TAG
	EXTERIOR DOOR / WINDOW TAG
	DOOR TAG

VICINITY MAP



PROJECT LOCATION
229 ROYAL STREET



ALTERATIONS TO
229 ROYAL ST.
NEW ORLEANS, LOUISIANA

REVISIONS

No.	Date	Scope

DRAWING TITLE:
TITLE PAGE

DRAWN BY:
SCALE:
JOB NO.: S10290.00
DATE: MAR. 20, 2014

DRAWING NO.:

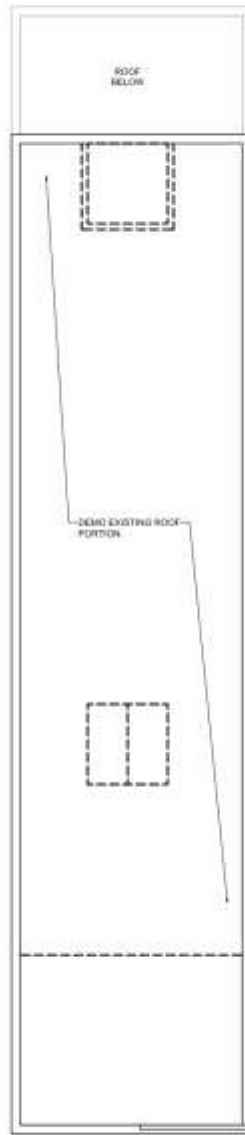
T000

229 Royal

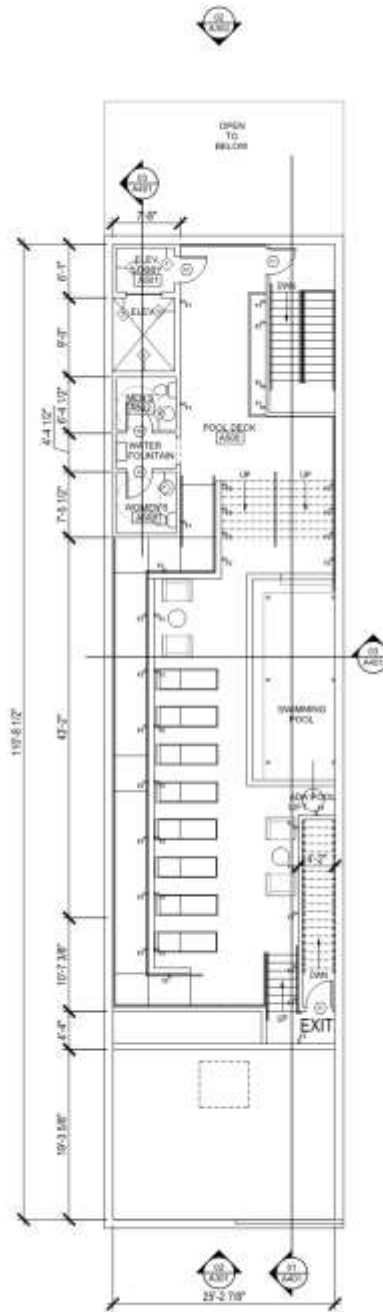
Vieux Carré Commission

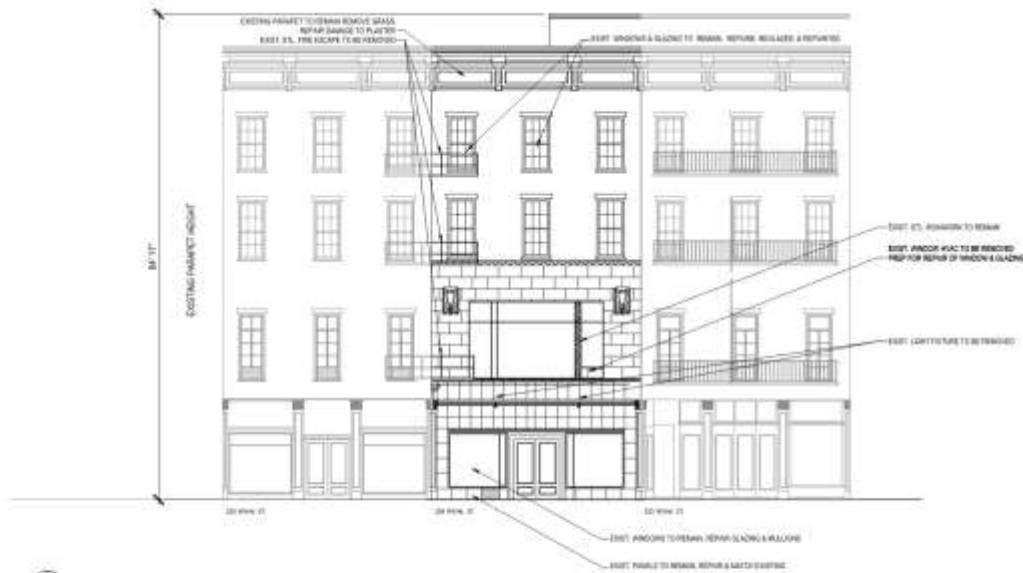
May 2, 2018





ROOF/POOL PLAN





01 EXISTING ROYAL ST ELEVATION
A301 229 ROYAL ST 54'-0" x 7'-0"



02 EXISTING ROYAL ST PHOTO
A301 229 ROYAL ST 54'-0" x 7'-0"

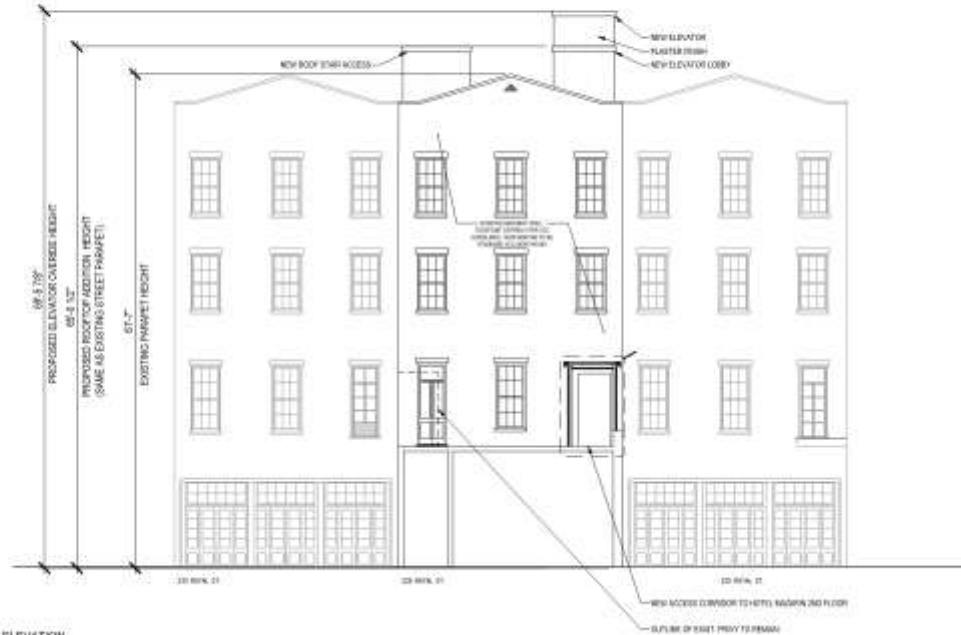


02 PROPOSED ROYAL ST ELEVATION
A301 229 ROYAL ST 54'-0" x 7'-0"





EXISTING BOURBON ST (SIDE) ELEVATION
229 ROYAL ST 34' x 112'



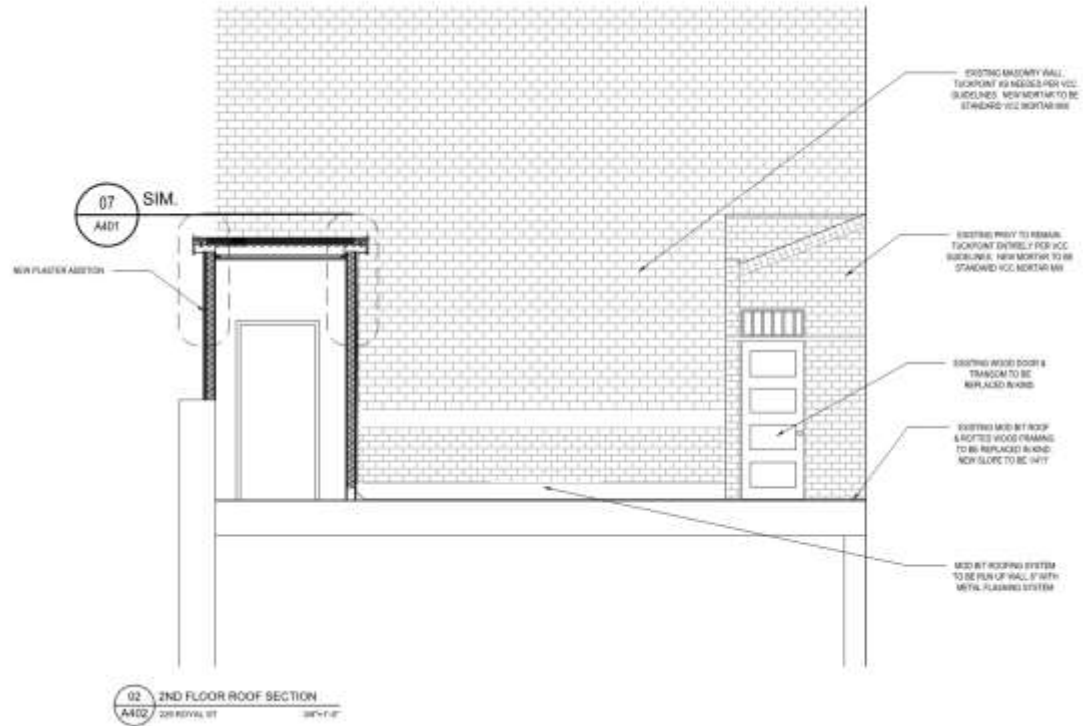
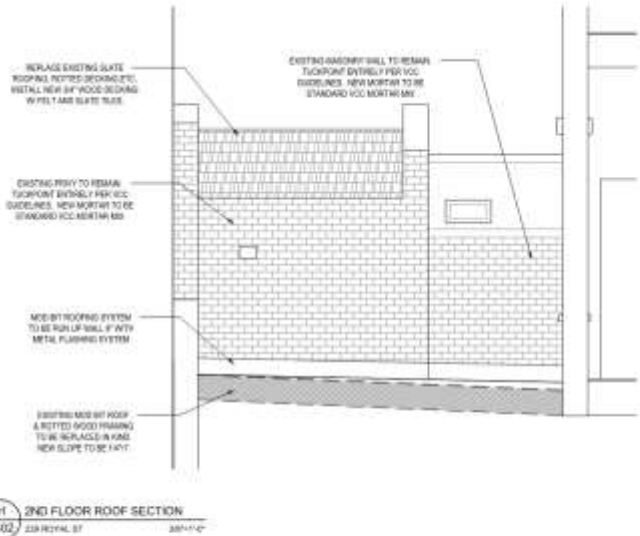
PROPOSED BOURBON ST (SIDE) ELEVATION
229 ROYAL ST 34' x 112'

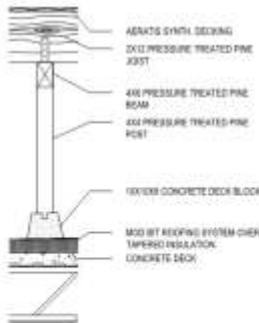
229 Royal

Vieux Carré Commission

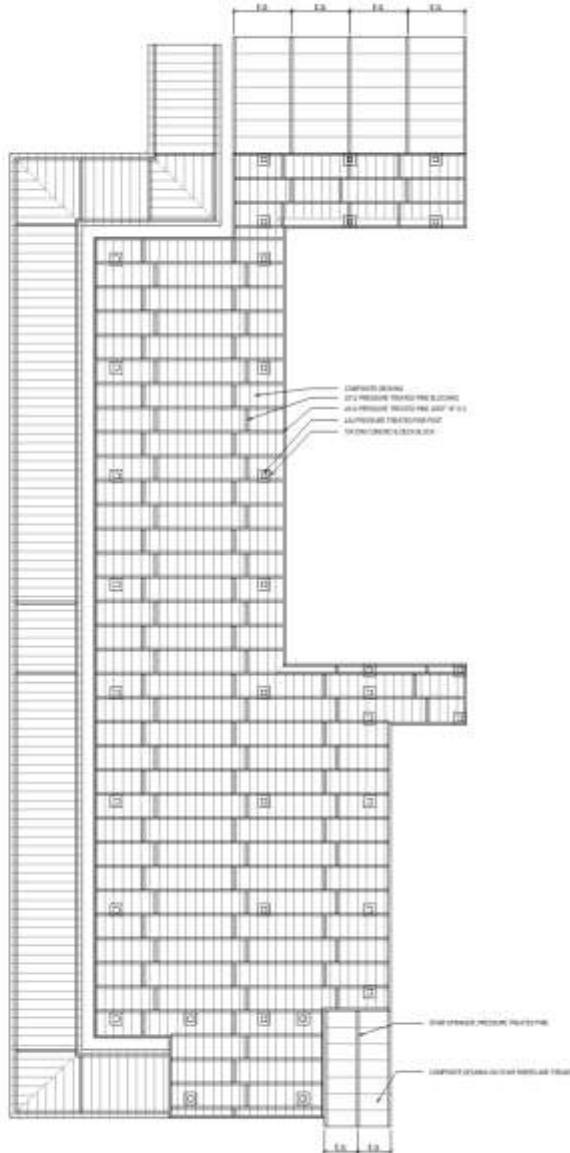
May 2, 2018



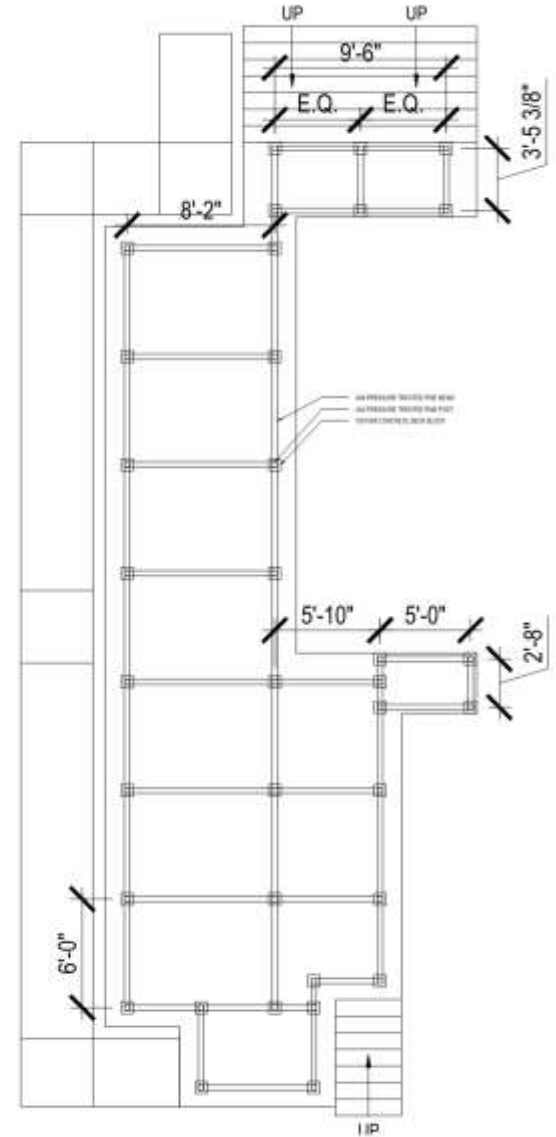




03 DECK SUPPORT DETAIL
A403 229 ROYAL ST 3/8\"/>



02 ROOF DECK JOIST PLAN
A403 229 ROYAL ST 1/4\"/>



01 ROOF DECK FRAMING PLAN
A403 229 ROYAL ST 1/4\"/>

FI

Lumark

DESCRIPTION

The patented Lumark Crosstour™ LED Wall Pack Series of luminaires provides an architectural style with super bright, energy efficient LEDs. The low-profile, rugged die-cast aluminum construction, universal back box, stainless steel hardware along with a sealed and gasketed optical compartment make the Crosstour impervious to contaminants. The Crosstour wall luminaire is ideal for wall/surface, inverted mount for façade/canopy illumination, post/bollard, site lighting, floodlight and low level pathway illumination including stairs. Typical applications include building entrances, multi-use facilities, apartment buildings, institutions, schools, stairways and loading docks test.

Catalog #	Type
Project	
Comments	Date
Prepared by	

SPECIFICATION FEATURES

Construction

Slim, low-profile LED design with rugged one-piece, die-cast aluminum hinged removable door and back box. Matching housing styles incorporate both a small and medium design. The small housing is available in 12W, 18W and 26W. The medium housing is available in the 38W model. Patented secure lock hinge feature allows for safe and easy tool-less electrical connections with the supplied push-in connectors. Back box includes three half-inch, NPT threaded conduit entry points. The universal back box supports both the small and medium forms and mounts to standard 3-1/2" to 4" round and octagonal, 4" square, single gang and masonry junction boxes. Key hole gasket allows for adaptation to junction box or wall. External fin design extracts heat from the fixture surface. One-piece silicone gasket seals door and back box. Minimum 5" wide pole for site lighting application. Not recommended for car wash applications.

Optical

Silicone sealed optical LED chamber incorporates a custom engineered mirrored anodized reflector providing high-efficiency illumination. Optical assembly includes impact-resistant tempered glass and meets IESNA requirements for full cutoff compliance. Available in seven lumen packages; 5000K, 4000K and 3000K CCT.

Electrical

LED driver is mounted to the die-cast housing for optimal heat sinking. LED thermal management system incorporates both conduction and natural convection to transfer heat rapidly away from the LED source. 12W, 18W, 26W and 38W series operate in -40°C to 40°C (-40°F to 104°F). High ambient 50°C models available. Crosstour luminaires maintain greater than 89% of initial light output after 72,000 hours of operation. Three half-inch NPT threaded conduit entry points allow for thru-branch wiring. Back box is an authorized

electrical wiring compartment. Integral LED electronic driver incorporates surge protection. 120-277V 50/60Hz or 347V 60Hz models.

Finish

Crosstour is protected with a Super durable TGIC carbon bronze or summit white polyester powder coat paint. Super durable TGIC powder coat paint finishes withstand extreme climate conditions while providing optimal color and gloss retention of the installed life.

Warranty

Five-year warranty.

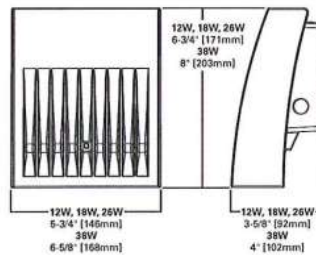


XTOR CROSSTOUR LED

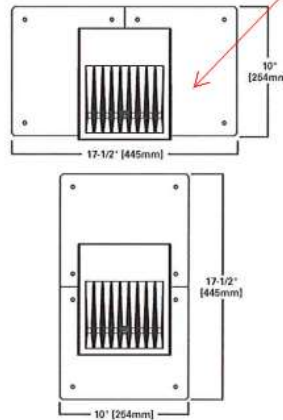
- APPLICATIONS:**
 WALL / SURFACE
 POST / BOLLARD
 LOW LEVEL
 FLOODLIGHT
 INVERTED
 SITE LIGHTING

NO PLATES TO BE INSTALLED.

DIMENSIONS



ESCUTCHEON PLATES



CERTIFICATION DATA

- UL/cUL Wet Location Listed
- LM79 / LM80 Compliant
- ROHS Compliant
- ADA Compliant
- NOM Compliant Models
- IP66 Ingress Protection Rated
- Title 24 Compliant
- DesignLights Consortium⁴ Qualified*

TECHNICAL DATA

- 40°C Maximum Ambient Temperature
- External Supply Wiring 90°C Minimum

EPA

- Effective Projected Area (Sq. Ft.):
 XTOR18, XTOR28, XTOR38=0.34
 XTOR48=0.45

SHIPPING DATA:

- Approximate Net Weight:
 3.7 - 5.25 lbs. [1.7 - 2.4 kgs.]

TDS14013EN
2017-07-26 12:21:59

*www.designlights.org



F2

COOPER LIGHTING - SURE-LITES®

DESCRIPTION

The Sure-Lites Architectural Emergency Light is designed to provide superior illumination while blending into the surrounding space. The housing is constructed of die-cast aluminum with an integral refractive polycarbonate lens and advanced optical design, which in conjunction with energy-efficient, long-lasting LEDs provides maximum path of egress lighting performance. The Sure-Lites Architectural Emergency Light is wet listed for temperatures between -30°C and 50°C (-22°F and 122°F). AEL2 has an always on mode and is available with Eagle Eye self diagnostics.

Catalog #		Type	
Project		Date	
Comments			
Prepared by			

SPECIFICATION FEATURES

Electrical

- Dual Voltage Input, 120/277 VAC, 60Hz
- Line-latching
- Solid-state Voltage Limited Charger
- Low-Voltage Disconnect
- Overload/Short Circuit Protection
- Test Switch/Power Indicator Light
- Fully Recharged in 24 hours
- Self diagnostics

Housing Construction

- Die-cast Aluminum Housing
- Universal Pattern Knockouts on rear of housing for direct mounting to junction box
- 1/2" Threaded Conduit Access on top surface
- Powder Coat Paint Finish
- UV Stable Polycarbonate Lens
- Silicone Gaskets

Battery

- Sealed Nickel Cadmium
- Maintenance free, long life
- Full Recharge Time, 24 hrs

Code Compliance

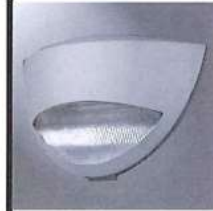
- UL924 Listed
- UL Outdoor Wet Location Listed (suitable for wet and damp locations)
- Life Safety NFPA 101
- NEC/OSHA
- Most State and Local Codes
- City of Chicago Code
- New York City Code

Warranty

- Unit: 5-Year
- Battery: 15-year pro-rata

Lamp Data

- 10 High Power LEDs
- Two color temperatures: 3000K and 5000K



AEL 2 ARCHITECTURAL EMERGENCY LIGHT SERIES 2

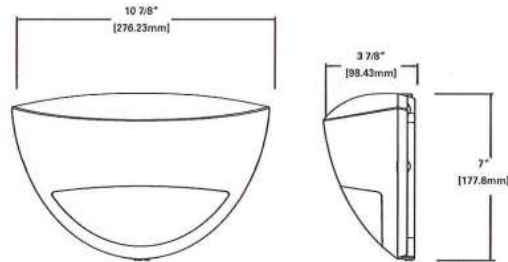
- DIE-CAST ALUMINUM
- SURFACE MOUNT
- SEALED NICKEL CADMIUM BATTERY
- LED LAMPS
- EAGLE EYE SELF DIAGNOSTICS
- ALWAYS ON FEATURE
- EMERGENCY LIGHTING

TOTALLY PREDICTABLE
RELIABILITY

ENERGY DATA

Sealed Nickel Cadmium Battery
Input Current:
(Used as emergency light only):
120V = 2.0 Watts
277V = 2.3 Watts

Input Current:
(Used as dual purpose
emergency light &
always-on light fixture):
120V=5.2 Watts
277V=5.0 Watts



ORDERING INFORMATION

Family	Color Temperature	Housing Finish	Options
AEL2 = Architectural Emergency Light 2	31 = 3000K Ave 46 = 6000K Ave	— = Silver WH = White BK = Black BZ = Bronze	— = No Self Diagnostics SD = Eagle Eye Self Diagnostics

Cooper Lighting
by E.T-M

Specifications and dimensions subject to change without notice.
Consult your representative for additional options and finishes.

ADX131226
2014 07 02 15:09 59

229 Royal

Vieux Carré Commission

May 2, 2018





Lamp Type: T3, LED
Max Wattage: 20W
Material: Aluminum

Support Material

Accessories ([productAcc.aspx?prodid=165](#))

4243-LED Specification Sheet ([Files/Specs/4243-LED-spec.pdf](#))

4243 Specification Sheet ([Files/Specs/4243-spec.pdf](#))

SPECIFICATION SHEET

Type: _____

Model: _____

Project: _____

MODEL 4243-LED Landscape Series • Step & Brick Lights

FIXTURE SPECIFICATIONS:

HOUSING:

Die-cast, copper-free, aluminum housing.

FINISH:

Polyester powder-coated finish available in Black, Architectural Brick, Architectural Bronze, Light Bronze, Dark Bronze, Granite, Terracotta, Rust, Hunter Green, Weathered Bronze, Weathered Iron, White, Verde, Pewter, and Mocha.

LENS:

Frosted, tempered, shock & heat-resistant soda-lime glass lens.

LAMP TYPE:

High Output LED with Vista exclusive smart-driver, powered to operate for 50,000 hours.

ELECTRICAL:

Input voltage range 6 - 15V AC or 12V DC, regulated to achieve uniform illumination throughout the cable run of fixtures. Integral surge & reverse polarity protection.

MOUNTING:

Surface mounting plate included, no recessed box required.

FASTENERS:

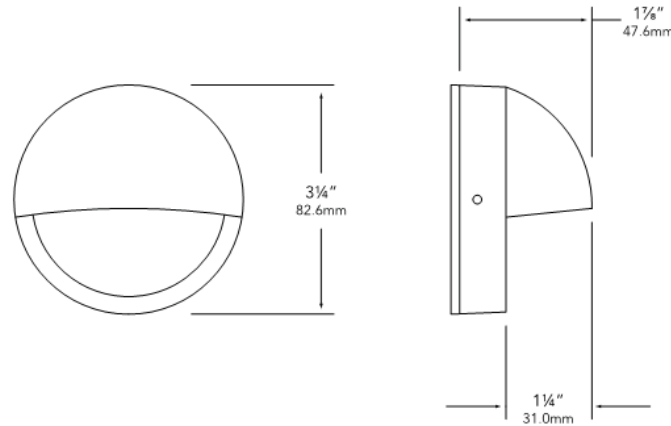
All fasteners are stainless steel.

WIRING:

Provided with a 3' pigtail of 18-2 SPT1 UV resistant cable & underground connectors for a secure connection to the supply cable.

All Vista luminaires are **MADE IN THE U.S.A.**

DIMENSIONS:



Vista Professional Outdoor Lighting reserves the right to modify the design and/or construction of the fixture shown without further notification.

1625 Surveyor Avenue • Simi Valley, CA 93063 • (805) 527-0987 • (800) 766-VISTA (8478)
FAX: (888) 670-VISTA (8478) • email@vistapro.com • www.vistapro.com



Ratification