

REVENUE ESTIMATING CONFERENCE
Quarterly Economic Review



CITY OF NEW ORLEANS

Mitchell J. Landrieu, Mayor

REVENUE ESTIMATING CONFERENCE MEMBERS

HON. MITCHELL J. LANDRIEU, MAYOR, CHAIRMAN

ANDY KOPPLIN, DEPUTY MAYOR AND CHIEF ADMINISTRATIVE OFFICER

HON. ARNIE FIELKOW, COUNCILMEMBER-AT-LARGE AND COUNCIL PRESIDENT

NORMAN S. FOSTER, DIRECTOR, DEPARTMENT OF FINANCE AND CFO

PETER RICCHIUTI, TULANE UNIVERSITY

JEROME A. LOMBA, CHIEF ECONOMIST

PRESENTED TUESDAY AUGUST 17, 2010

TABLE OF CONTENTS

FINANCIAL FORECAST	4
REVENUE FORECAST	5
PRELIMINARY FY 2011 REVENUE PROJECTION	7
NATIONAL ECONOMY	8
LOCAL ECONOMY	8
APPENDIX	9
1. FY 2010 REVISED REVENUE PROJECTIONS	10
2. ECONOMIC CHARTS	13
3. ECONOMIC DATA	29

FINANCIAL FORECAST

OBJECTIVE

To present the preliminary estimates for FY 2011 and a revised outlook for FY 2010 Revenue Estimates based on revenue collections and expenditures through June 30, 2010.

EXECUTIVE SUMMARY

Based on current revenue trends, this revised revenue forecast indicates that despite the recent growth in the local economy and the robust 7.4% growth in recurring revenues, budgetary expectations will not be achieved this year.

At the last Revenue Estimating Conference, it was reported that anticipated collections for FY

2010 would fall short by \$12.5 million from budget. Based on collections through June, FY 2010 General Fund revenues are projected to fall short of the amended \$266.7 million budget by \$21.2 million or 4.55%.

Despite the disappointing budgetary outlook for FY 2010, one must not overlook the underlying positive trend in General Fund revenues. Even at the projected reduced level of \$445.5 million, it remains \$30.6 million or 7.4% above the \$414.9 million in recurring revenues collected in FY 2009 as reflected in unaudited estimates.

PROJECTION SUMMARY

Table I

REVENUE SOURCE	FY 2009	FY 2010	FY 2010	FY 2010	VARIANCE	
	UNAUDITED	BUDGET AMEND 6/30/10	PROJECTED REVISED 4/22/10	PROJECTED REVISED 8/17/10	AMENDED Jun 30, 2010	REVISED Apr 22, 2010
TAXES	\$233,883,787	\$259,763,488	\$253,287,072	\$255,675,049	-\$4,088,439	\$2,387,977
LICENSES & PERMITS	\$56,759,040	\$66,625,347	\$61,941,278	\$59,834,548	-\$6,790,799	-\$2,106,730
INTERGOVERNMENTAL	\$8,909,466	\$9,618,419	\$10,151,881	\$9,098,008	-\$520,411	-\$1,053,873
CHARGES FOR SERVICES	\$49,087,683	\$62,775,536	\$64,040,327	\$57,471,523	-\$5,304,013	-\$6,568,805
FINES & FORFEITS	\$27,008,561	\$36,333,767	\$33,811,042	\$33,807,889	-\$2,525,877	-\$3,153
INTEREST INCOME	\$2,064,237	\$3,142,682	\$1,001,808	\$820,612	-\$2,322,071	-\$181,196
MISCELLANEOUS REVENUES	\$37,167,123	\$27,459,708	\$28,170,631	\$28,783,779	\$1,324,071	\$613,148
GENERAL FUND REVENUE	\$414,879,897	\$465,718,948	\$452,404,040	\$445,491,408	-\$20,227,540	-\$6,912,632
FROM FUND BALANCE		\$991,947	\$991,947		-\$991,947	-\$991,947
CDL DRAW DOWN	\$35,268,866					
GO ZONE PAYMENTS	\$8,259,582					
TOTAL GENERAL FUND	\$458,408,345	\$466,710,895	\$453,395,987	\$445,491,408	-\$21,219,487	-\$7,904,579

REVENUE FORECAST

GENERAL FUND REVENUE

General fund revenues consist of those revenue measures that are levied and collected by the City and are used to finance necessary public services. They include recurring revenues originating from the state, for the most part, to support the provision of necessary and critical city services.

From 2005 through 2009 as a result of the consequences of the devastating levee failures after hurricane Katrina, General Fund revenues were augmented by federal loans of \$240 million under the SCDL program and a \$52 million loan from the State. Those funds have been exhausted and are no longer available to support city operations.

TAXES

Property Tax

Property tax collections through June are consistent with the revisions reported at the last conference in April and no further adjustments have been made.

Sales Tax

Sales taxes on retail sales through June are consistent with the April revisions and required only a minor revision.

Hotel-Motel tax collections for the first five months of 2010 were very positive and were further adjusted upwards by \$1.3 million from the April revision.

Automobile sales were revised downwards by \$1.1 million in April; however, subsequent collections have reversed expectations with a \$722,000 positive adjustment to the April revision.

Utility Taxes

Utility taxes were reduced by \$1.5 million in April but subsequent collections have markedly improved suggesting that end of year collections will be off budget by only \$376,000 rather than the previously estimated \$1.5 million.

LICENSES AND PERMITS

Occupational License

The rate of collections in the first three months has not been sustained and has required a downward adjustment of \$995,000 from April.

Franchise

The outlook for franchise fees remains consistent with the April revision largely as a result of offsetting adjustments. Entergy franchise estimates improved by \$2.2 million while estimates for AT&T were reduced since the assumed settlement has not occurred.

Building Permits

The rate of increase in building permits for the first quarter has not been sustained requiring a reduction of \$837,000 from April expectations. However, annual collection will still exceed budget by \$600,000.

Brake Tags

Vehicle inspections continue to trend above last year's collection but will fall short of budget by \$1.5 million.

Other Licenses and Permits

Other licenses will fall short of budgetary expectations by approximately \$120,000.

INTERGOVERNMENTAL REVENUES

Intergovernmental revenues are trending approximately \$520,000 below budget principally as a result of declining video poker revenues.

INTEREST INCOME

Prospects for interest income for 2010 have deteriorated further by \$181,000 from last April as a result of declining cash balances and continued low interest rates.

SERVICE CHARGES

Health Fees

EMS collections did spectacularly well in the first quarter of the year but could not sustain the torrid pace, thus requiring a downward adjustment in expectations from April to a level approximately \$168,000 below budget.

Parking Meters

Parking meter collections are trending \$700,000 over 2009 and \$600,000 over April estimates but \$4.5 million under budget.

Tax Collection

The projection was reestimated in this forecast and results in revenues about \$180,000 under the \$8.6 million budgeted.

FINES & FORFEITURES

Revenues are trending \$2.5 million under budget expectations consistent with last April's expectations.

MISCELLANEOUS REVENUES

State support for casino related expenditures is assumed at the \$900,000 per quarter for the second half of the year despite having been lower in the first half of the year.

PRELIMINARY FY 2011 REVENUE PROJECTION

REVENUE OUTLOOK

General Fund revenues are projected to exceed current estimated revenues for FY 2010 by \$1.8 million, a very modest .41%.

This modest increase is not motivated by any particular weakness in the local economy but rather by the anticipated non re-occurrence of one-time revenues contained in the FY 2010 budget. There is \$5 million in this year's budget from the sale of adjudicated property which is not anticipated in the FY 2011 projection. In addition, the transfer of \$3.4 million from EDF budgeted this year will not be available in 2011.

Miscellaneous contributions are also projected to fall by \$1 million next year from anticipated collections this year.

Corrected for these one-time revenues, projected FY 2011 is \$11.2 million or 2.6% greater than currently anticipated FY 2010 collections.

CHANGE IN OUTLOOK

In October of 2009, revenues projected for 2011 were \$468.7 million compared to the current estimate of \$447.3 million a variance of \$21.3 million or 4.55%.

Overstated estimates for franchises and traffic fines & violations accounted for \$11 million of the variance while interest income accounted for an additional \$2.2 million.

Fundamentally, the outlook from 2009 is consistent with current expectations.

FY 2010 - 2011 REVENUE COMPARISON
Table II

REVENUE SOURCE	FY 2010 PROJECTED REVISED 8/17/10	FY 2011 PROJECTED REVISED 8/17/10	VARIANCE	%
TAXES	\$255,675,049	\$254,526,533	-\$1,148,516	-0.45%
LICENSES & PERMITS	\$59,834,548	\$61,659,704	\$1,825,156	3.05%
INTERGOVERNMENTAL	\$9,098,008	\$9,226,751	\$128,742	1.42%
CHARGES FOR SERVICES	\$57,471,523	\$58,835,384	\$1,363,861	2.37%
FINES & FORFEITS	\$33,807,889	\$37,925,370	\$4,117,481	12.18%
INTEREST INCOME	\$820,612	\$2,412,757	\$1,592,145	194.02%
MISCELLANEOUS REVENUES	\$28,783,779	\$22,736,944	-\$6,046,835	-21.01%
GENERAL FUND REVENUE	\$445,491,408	\$447,323,443	\$1,832,035	0.41%

NATIONAL ECONOMY

Although the National Bureau of Economic Research, the recognized authority on business cycles in the U. S., has not declared an end to the recession, most economists are of the opinion that the expansion began in late third quarter or early in the fourth quarter of 2009.

Real Gross Domestic Product, the most comprehensive measure of economic performance, has grown for four consecutive quarters from third quarter 2009 through second quarter 2010 according to U.S. Department of Commerce records.

Employment growth has been particularly anemic for an economy in the third quarter of an expansion. The lack of employment growth has given rise to the label “jobless recovery” and has cast doubt on its sustainability. Despite the weakness, there is no national recession anticipated in the near future.

LOCAL ECONOMY

Growth in payroll employment in New Orleans has consistently outperformed its national counterpart in the post-Katrina environment.

Initially, buttressed by the need to rebuild its physical infrastructure, efforts are now directed to rebuilding the New Orleans economy.

Many businesses, particularly in the tourist trade and port activity, have rebounded but challenges to growing market shares that prevailed pre-Katrina remain. Regaining convention business lost by the storm is exceedingly difficult in the current national economic environment as is regaining the cruise ship

business that existed before Katrina. Great strides have been made as evidenced by the city’s sales and hotel/motel tax collections for this year but much remains to be done.

The modest growth in revenues projected for FY 2011 is predicated on the expectations of continued growth in the local economy and the health of the convention and tourist industry as well as the port are critical elements of the local economy and to this projection.

APPENDIX

1. FY 2010 REVISED REVENUE PROJECTIONS

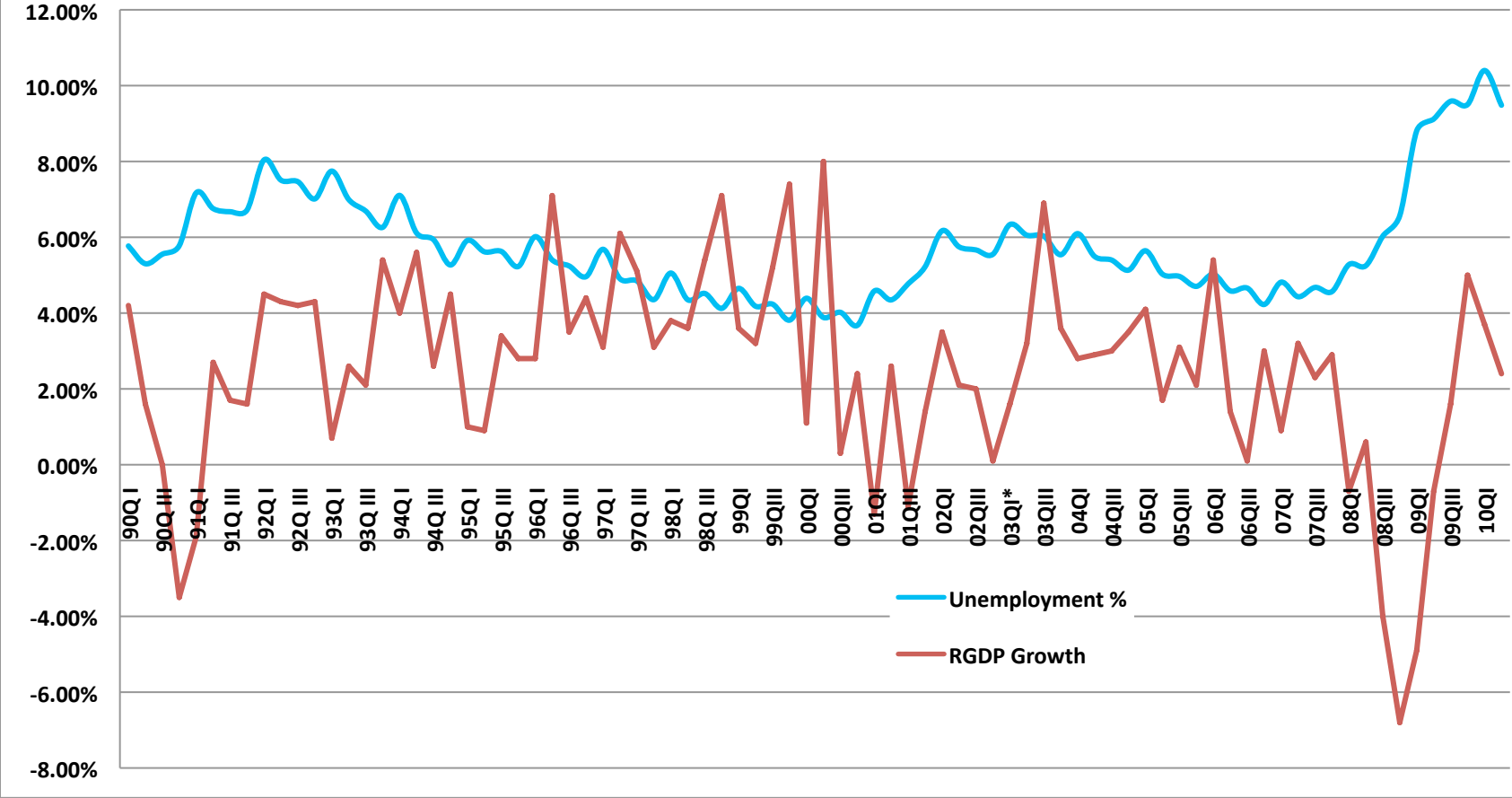
REVENUE SOURCE	FY 2009		FY 2010		FY 2010		FY 2010		VARIANCE		FY 2011	
	UNAUDITED		BUDGET		PROJECTED		PROJECTED		AMENDED		PROJECTED	
	6/30/10	8/17/10	6/30/10	8/17/10	4/22/10	8/17/10	4/22/10	8/17/10	6/30/10	8/17/10	4/22/10	8/17/10
TAXES												
PROPERTY TAXES												
REAL ESTATE	\$64,833,205		\$64,083,896	\$70,069,478	\$70,069,478	\$5,985,582	\$0	\$67,090,399				
PERSONAL PROPERTY	\$13,015,255		\$14,477,737	\$14,487,831	\$14,487,831	\$10,094	\$0	\$15,012,970				
TOTAL PROPERTY TAXES	\$77,848,460		\$78,561,633	\$84,557,309	\$84,557,309	\$5,995,676	\$0	\$82,103,369				
PENALTY AND INTEREST	\$2,146,427		\$6,169,402	\$6,152,281	\$6,169,402	\$0	\$17,121	\$6,329,402				
SALES TAX												
GENERAL SALES-USE TAX	\$117,637,731		\$131,780,535	\$125,829,984	\$125,656,123	-\$6,124,413	-\$173,862	\$125,890,326				
MOTOR VEHICLE TAX	\$7,368,230		\$7,948,279	\$6,780,344	\$7,501,985	-\$446,294	\$721,641	\$7,625,721				
HOTEL/MOTEL TAX	\$8,865,989		\$8,883,337	\$9,894,261	\$11,220,877	\$2,337,540	\$1,326,616	\$10,596,556				
TOTAL SALES TAX	\$133,871,949		\$148,612,152	\$142,504,590	\$144,378,986	-\$4,233,166	\$1,874,396	\$144,112,603				
TOTAL UTILITY	\$10,168,396		\$11,254,372	\$9,775,575	\$10,878,387	-\$375,985	\$1,102,813	\$11,186,691				
PARKING TAX	\$2,990,215		\$3,511,378	\$3,647,051	\$3,683,131	\$171,754	\$36,080	\$3,759,046				
DOCUMENTARY TRANSACTION	\$4,315,598		\$4,000,000	\$4,058,157	\$3,587,809	-\$412,191	-\$470,348	\$4,401,058				
TOTAL GAMING TAXES	\$1,880,088		\$2,104,552	\$2,042,110	\$1,703,078	-\$401,473	-\$339,031	\$1,917,418				
TOTAL OTHER TAXES	\$662,655		\$5,550,000	\$550,000	\$716,947	-\$4,833,053	\$166,947	\$716,947				
TOTAL TAXES	\$233,883,787		\$259,763,488	\$253,287,072	\$255,675,049	-\$4,088,439	\$2,387,977	\$254,526,533				
LICENSES & PERMITS												
OCCUPATIONAL LIC	\$8,553,561		\$9,816,817	\$9,850,674	\$8,856,002	-\$960,815	-\$994,671	\$9,025,546				
FRANCHISE FEES	\$55,094,300		\$41,511,948	\$37,747,934	\$37,674,396	-\$3,875,552	-\$73,538	\$38,407,062				
BUILDING PERMITS	\$5,427,052		\$4,801,379	\$6,248,489	\$5,411,241	\$609,862	-\$837,248	\$5,324,000				
ELECTRICAL AND MECHANICAL	\$2,663,539		\$3,184,562	\$2,259,719	\$2,200,331	-\$984,231	-\$59,388	\$3,138,000				
MOTOR VEHICLES	\$1,877,191		\$3,922,998	\$2,365,905	\$2,452,080	-\$1,470,918	\$86,176	\$2,500,000				
BEVERAGE PERMITS	\$1,451,389		\$1,533,363	\$1,528,624	\$1,470,237	-\$63,126	-\$58,387	\$1,493,446				
HEALTH	\$28,758		\$25,000	\$30,822	\$47,112	\$22,112	\$16,290	\$25,000				
MAYORALTY PERMITS	\$40,366		\$200,000	\$239,048	\$212,132	\$12,132	-\$26,917	\$240,000				
OTHER LICENSES & PERMITS	\$1,422,884		\$1,629,281	\$1,670,064	\$1,511,016	-\$118,264	-\$159,048	\$1,506,650				
TOTAL LICENSES & PERMITS	\$56,759,040		\$66,625,347	\$61,941,278	\$59,834,548	-\$6,790,799	-\$2,106,730	\$61,659,704				

REVENUE SOURCE	FY 2009		FY 2010		FY 2010		FY 2010		VARIANCE		FY 2011	
	UNAUDITED	BUDGET	PROJECTED	REVISIED	PROJECTED	REVISIED	AMENDED	REVISIED	6/30/10	4/22/10	PROJECTED	PROJECTED
	6/30/10	4/22/10	8/17/10	4/22/10	8/17/10	6/30/10	4/22/10	8/17/10	8/17/10	8/17/10	8/17/10	8/17/10
INTERGOVERNMENTAL												
STATE REVENUE SHARING	\$1,432,023	\$491,914	\$1,056,605	\$1,056,605	\$1,056,605	\$564,691	\$0	\$0	\$1,056,605	\$0	\$1,056,605	\$1,056,605
PARISH TRANSPORTATION	\$3,862,553	\$4,357,503	\$4,357,503	\$4,357,503	\$4,357,503	\$0	\$0	\$0	\$4,357,503	\$0	\$4,357,503	\$4,357,503
OTHER INTERGOVERNMENTAL	\$3,614,891	\$4,769,002	\$3,683,900	\$4,737,773	\$3,683,900	-\$1,085,102	-\$1,053,873	\$3,812,642	-\$1,053,873	-\$1,053,873	\$3,812,642	\$3,812,642
TOTAL INTERGOVERNMENTAL	\$8,909,466	\$9,618,419	\$9,098,008	\$10,531,881	\$9,098,008	-\$520,411	-\$1,053,873	\$9,226,751	-\$1,053,873	-\$1,053,873	\$9,226,751	\$9,226,751
CHARGES FOR SERVICES												
HEALTH FEES	\$7,700,492	\$8,815,429	\$8,647,220	\$10,703,911	\$8,647,220	-\$168,209	-\$2,056,691	\$8,973,802	-\$2,056,691	-\$2,056,691	\$8,973,802	\$8,973,802
PARKING METERS	\$3,180,670	\$8,329,391	\$3,863,722	\$3,220,398	\$3,863,722	-\$4,465,669	\$643,324	\$4,100,000	\$643,324	\$643,324	\$4,100,000	\$4,100,000
SANITATION SERVICE CHARGE	\$8,549,339	\$16,712,750	\$17,128,710	\$20,709,429	\$17,128,710	\$415,960	-\$3,580,719	\$17,620,289	-\$3,580,719	-\$3,580,719	\$17,620,289	\$17,620,289
TAX COLLECTION SERVICE	\$8,281,345	\$8,578,204	\$8,397,485	\$10,070,944	\$8,397,485	-\$180,719	-\$1,673,459	\$8,607,713	-\$1,673,459	-\$1,673,459	\$8,607,713	\$8,607,713
INDIRECT COSTS	\$3,455,344	\$4,600,000	\$4,283,625	\$4,600,000	\$4,283,625	-\$316,375	-\$316,375	\$4,600,000	-\$316,375	-\$316,375	\$4,600,000	\$4,600,000
UTILITY REGULATORY FEES	\$1,186,511	\$7,450,400	\$7,450,400	\$7,450,400	\$7,450,400	\$0	\$0	\$7,450,400	\$0	\$0	\$7,450,400	\$7,450,400
TOWING AND BOOTING	\$742,851	\$1,032,300	\$921,627	\$921,627	\$1,004,499	-\$27,801	\$82,871	\$1,070,000	\$82,871	\$82,871	\$1,070,000	\$1,070,000
OTHER CHARGES FOR SERVICES	\$5,991,130	\$7,257,062	\$6,695,862	\$6,363,619	\$6,695,862	-\$561,200	\$332,244	\$6,413,180	\$332,244	\$332,244	\$6,413,180	\$6,413,180
TOTAL CHARGES FOR SERVICES	\$49,087,683	\$62,775,536	\$57,471,523	\$64,040,327	\$57,471,523	-\$5,304,013	-\$6,568,805	\$58,835,384	-\$6,568,805	-\$6,568,805	\$58,835,384	\$58,835,384
FINES & FORFEITS												
TRAFFIC FINES	\$4,257,397	\$9,974,700	\$4,949,341	\$10,749,145	\$4,949,341	-\$5,025,359	-\$5,799,804	\$4,800,000	-\$5,799,804	-\$5,799,804	\$4,800,000	\$4,800,000
RED LIGHT/CAMERA ENFORCEMENT	\$9,738,385	\$14,343,567	\$14,797,286	\$10,711,013	\$14,797,286	\$453,720	\$4,086,273	\$18,000,000	\$4,086,273	\$4,086,273	\$18,000,000	\$18,000,000
PARKING METER FINES	\$12,638,889	\$11,000,000	\$13,532,870	\$11,575,513	\$13,532,870	\$2,532,870	\$1,957,357	\$13,532,870	\$1,957,357	\$1,957,357	\$13,532,870	\$13,532,870
OTHER FINES & FORFEITS	\$373,890	\$1,015,500	\$528,392	\$775,371	\$528,392	-\$487,108	-\$246,979	\$1,592,500	-\$246,979	-\$246,979	\$1,592,500	\$1,592,500
TOTAL FINES & FORFEITS	\$27,008,561	\$36,333,767	\$33,807,889	\$33,811,042	\$33,807,889	-\$2,525,877	-\$3,153	\$37,925,370	-\$3,153	-\$3,153	\$37,925,370	\$37,925,370
INTEREST INCOME												
INTEREST-OPERATING FUNDS	\$406,206	\$784,125	\$21,169	\$192,862	\$21,169	-\$762,956	-\$171,693	\$31,169	-\$762,956	-\$171,693	\$31,169	\$31,169
INTEREST - CAPITAL FUNDS	\$1,658,031	\$2,358,557	\$799,443	\$808,946	\$799,443	-\$1,559,115	-\$9,503	\$2,381,588	-\$9,503	-\$9,503	\$2,381,588	\$2,381,588
TOTAL INTEREST INCOME	\$2,064,237	\$3,142,682	\$820,612	\$1,001,808	\$820,612	-\$2,322,071	-\$181,196	\$2,412,757	-\$181,196	-\$181,196	\$2,412,757	\$2,412,757
MISCELLANEOUS REVENUES												
GAMING REVENUES	\$17,688,540	\$16,825,000	\$16,545,326	\$16,825,000	\$16,545,326	-\$279,674	-\$279,674	\$16,825,000	-\$279,674	-\$279,674	\$16,825,000	\$16,825,000
OTHER MISCELLANEOUS REVENUES	\$19,478,583	\$10,634,708	\$12,238,453	\$11,345,631	\$12,238,453	\$1,603,745	\$892,822	\$5,911,944	\$892,822	\$892,822	\$5,911,944	\$5,911,944
TOTAL MISC. REVENUES	\$37,167,123	\$27,459,708	\$28,783,779	\$28,170,631	\$28,783,779	\$1,324,071	\$613,148	\$22,736,944	\$613,148	\$613,148	\$22,736,944	\$22,736,944

2. ECONOMIC CHARTS

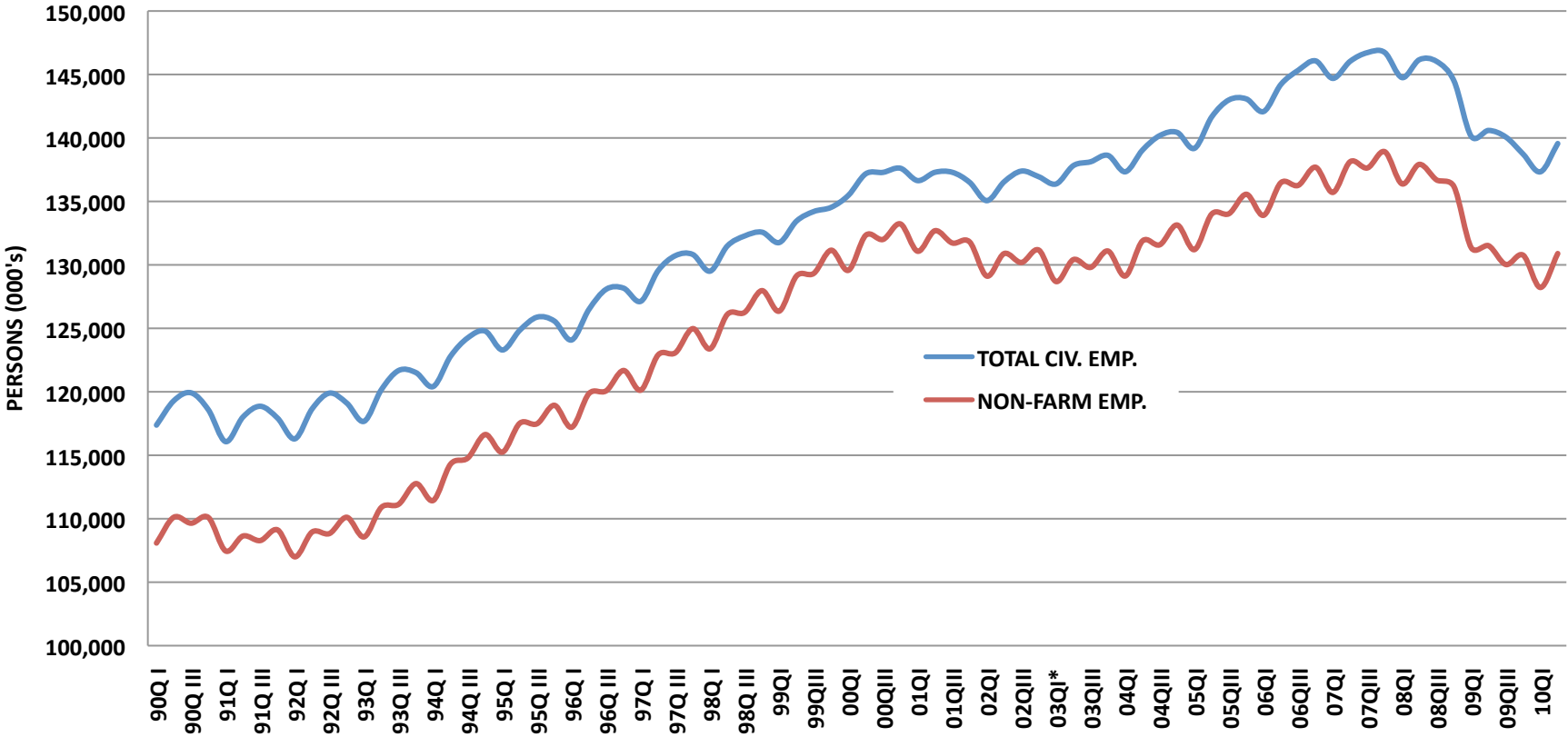
U.S. REAL GDP GROWTH AND UNEMPLOYMENT RATE

Chart 1



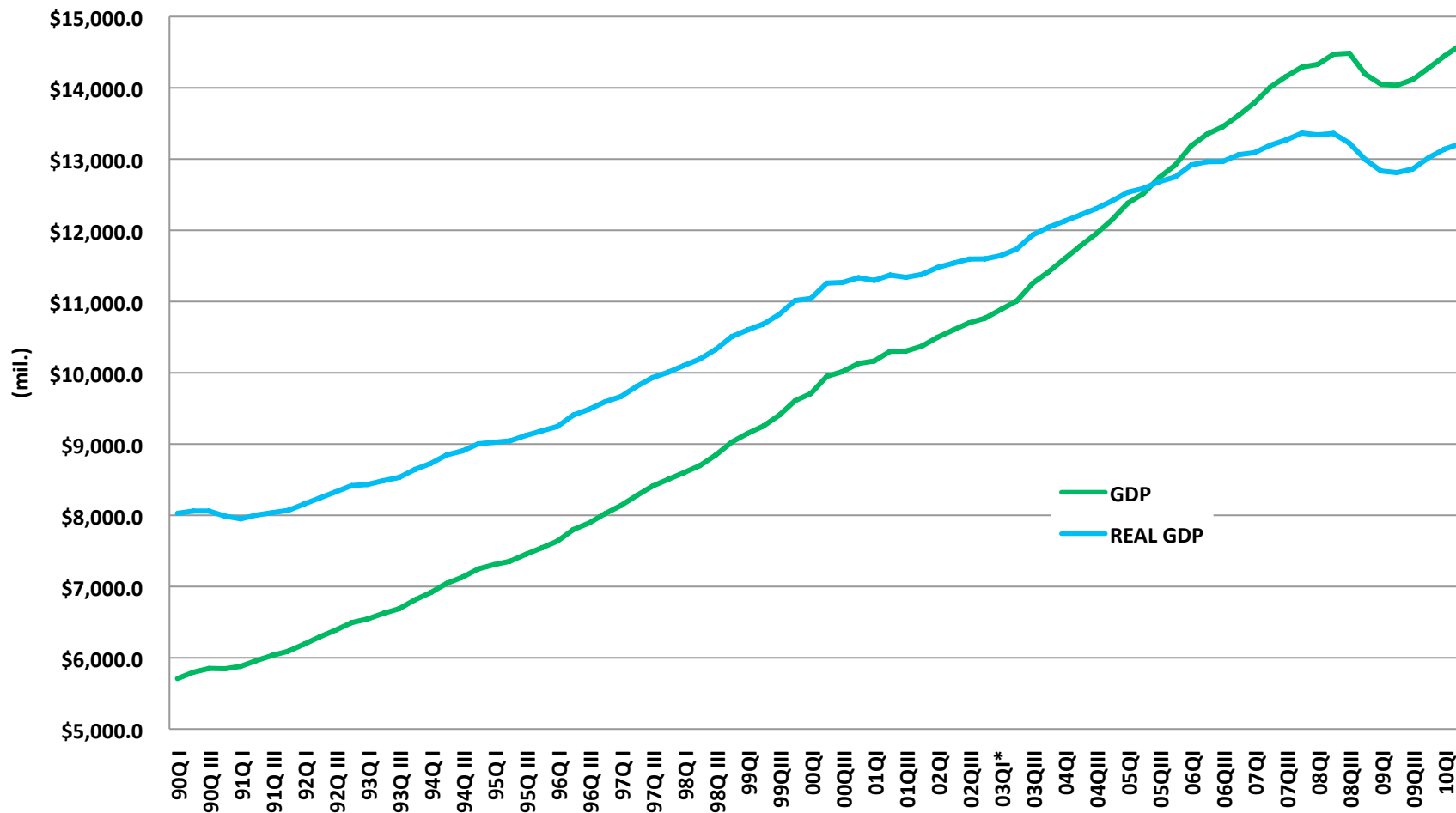
U.S. EMPLOYMENT

Chart 2



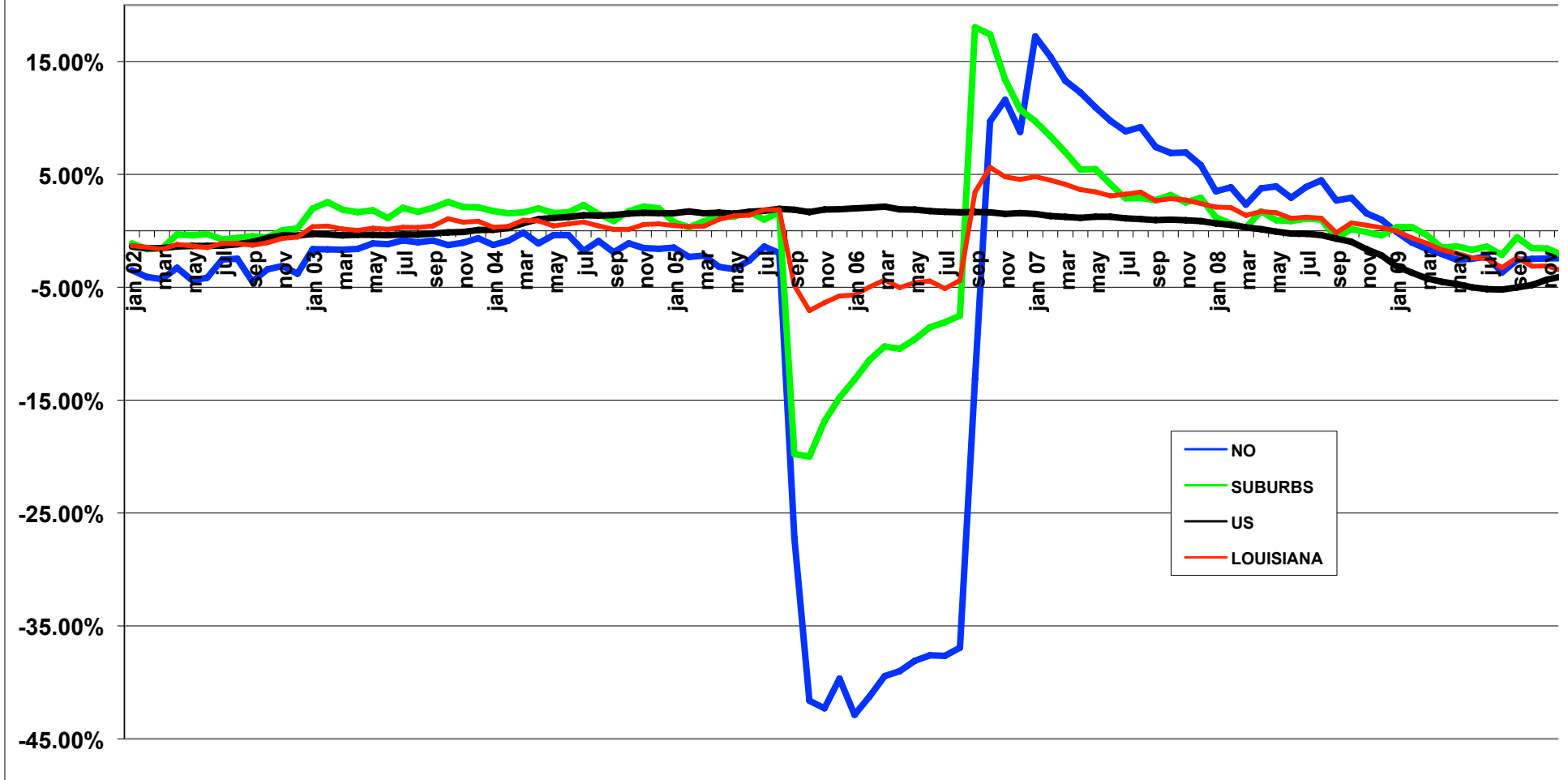
QUARTERLY GDP AT ANNUAL RATES

Chart 3



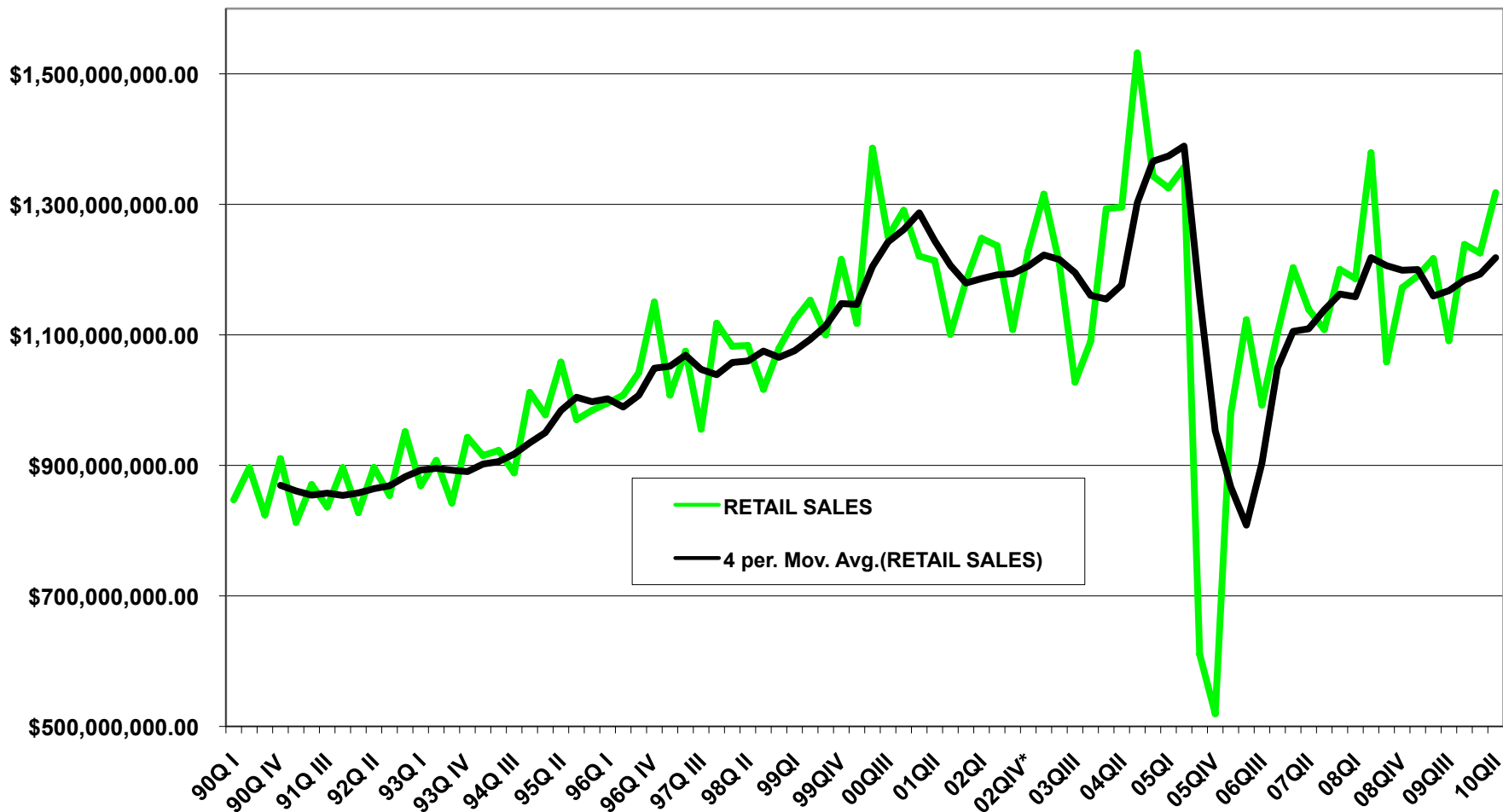
ANNUALIZED EMPLOYMENT GROWTH

Chart 4



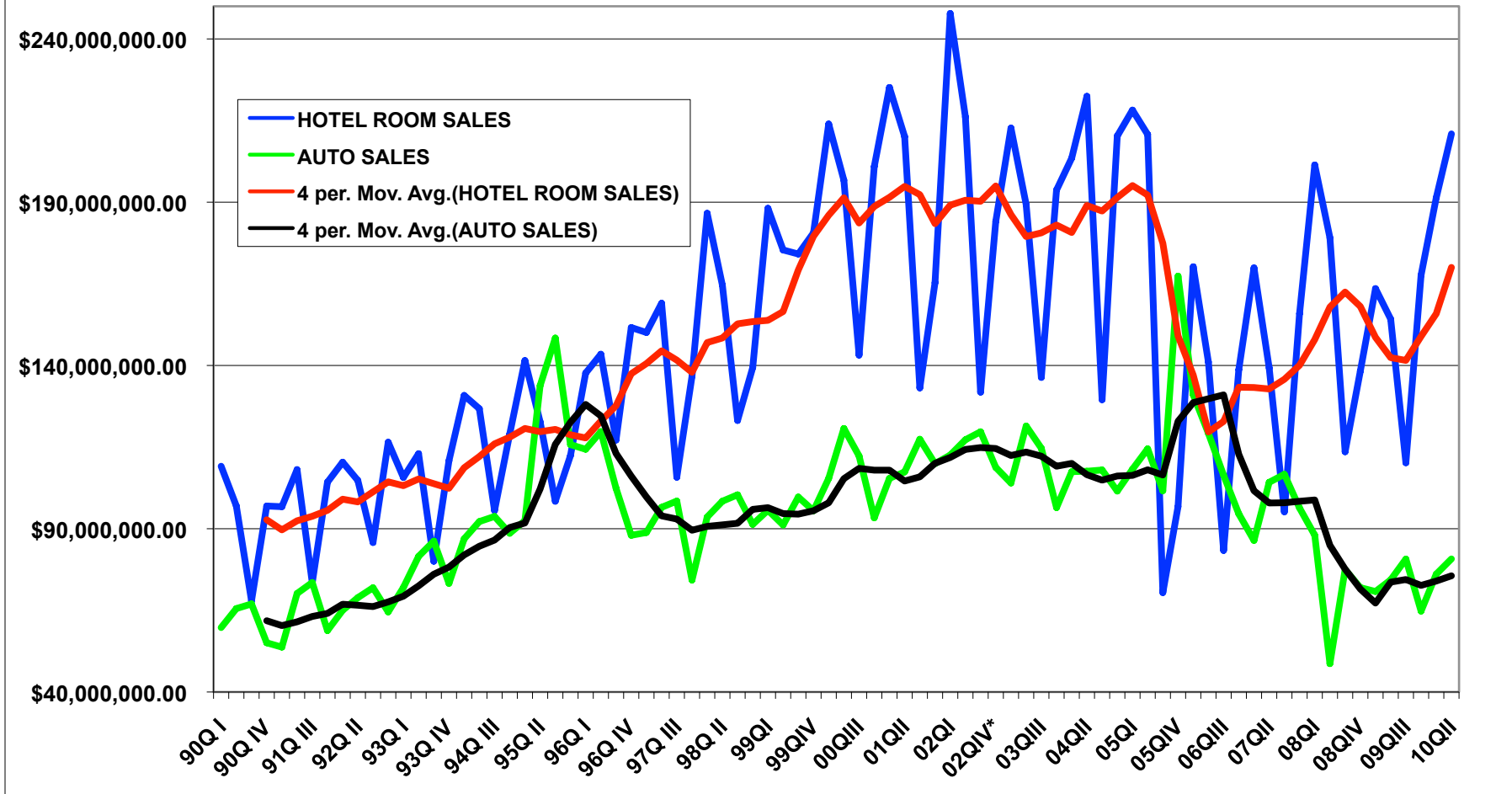
COMMERCIAL ACTIVITY: RETAIL SALES

Chart 5



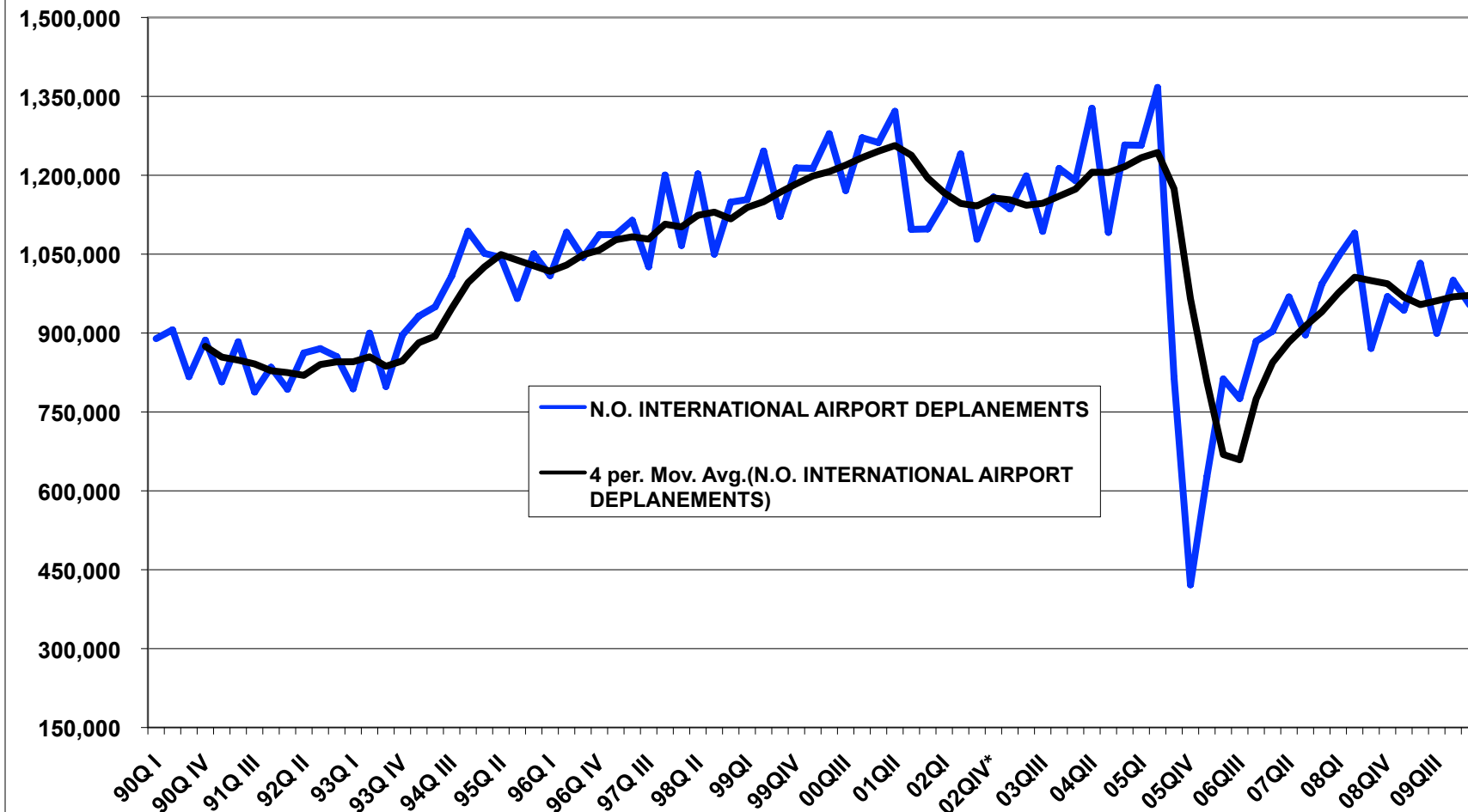
COMMERCIAL ACTIVITY: HOTEL & AUTO SALES

Chart 6



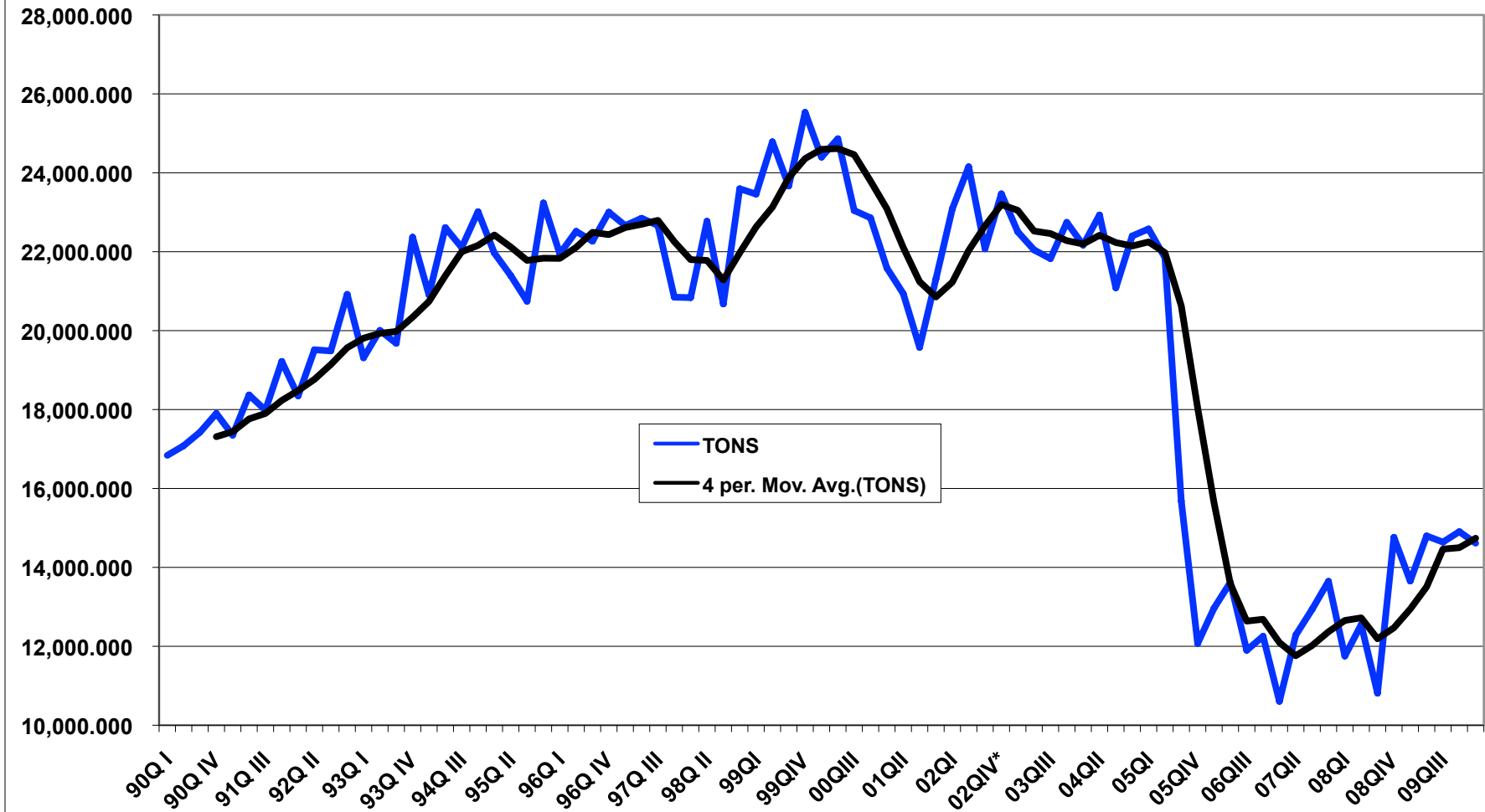
TOURISM ACTIVITY

Chart 7



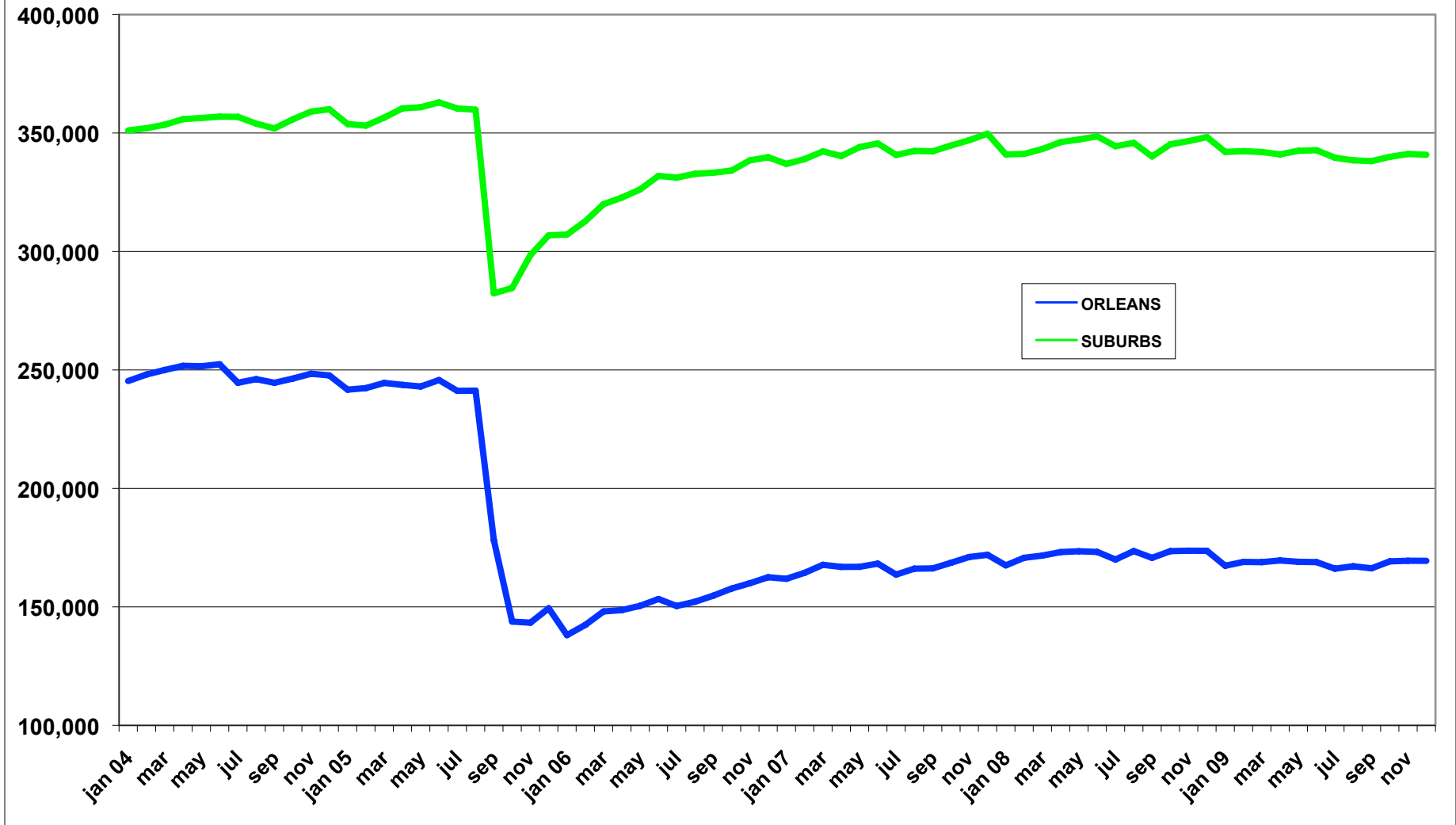
AIR CARGO (TONS)

Chart 8



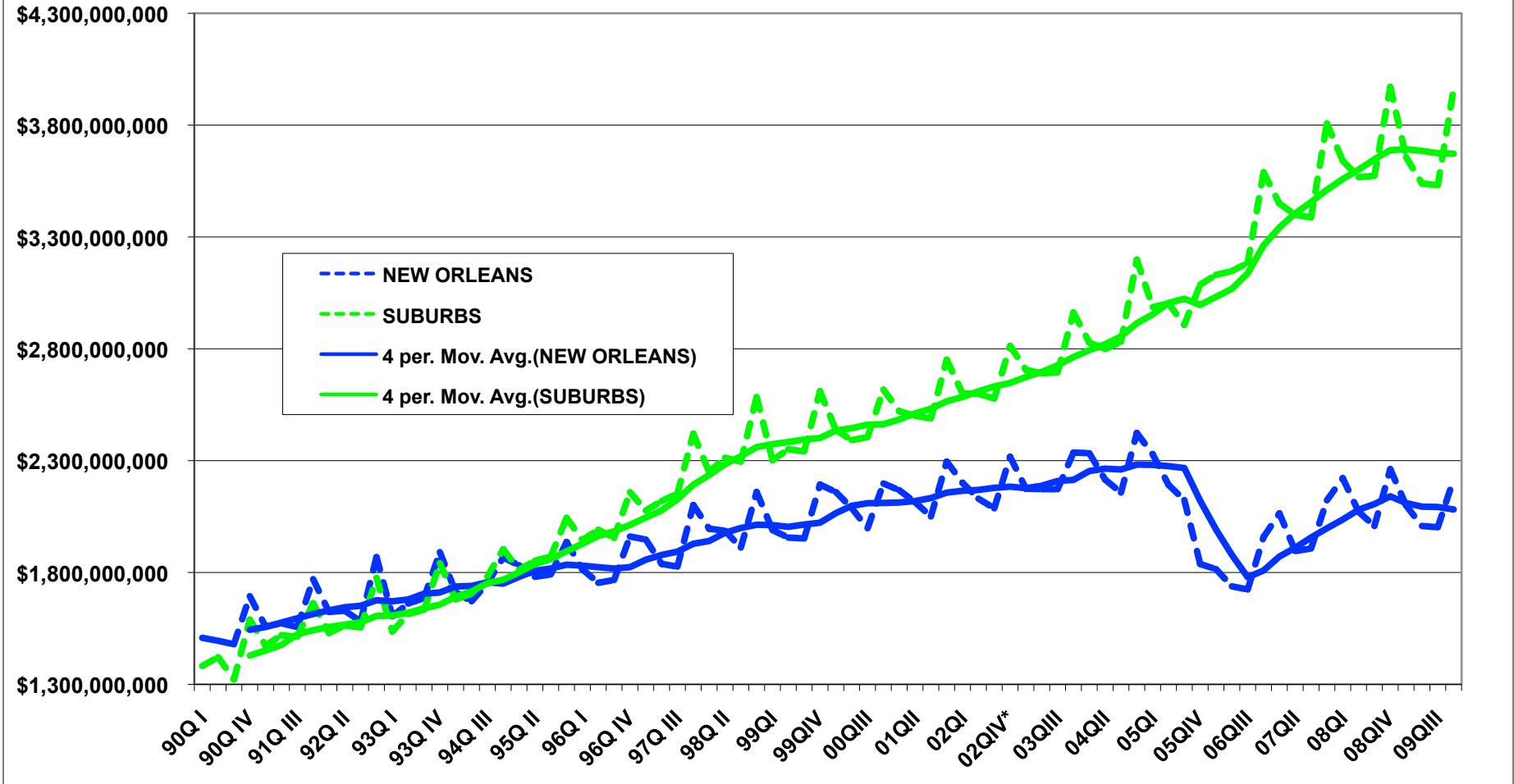
MONTHLY PAYROLL EMPLOYMENT

Chart 9



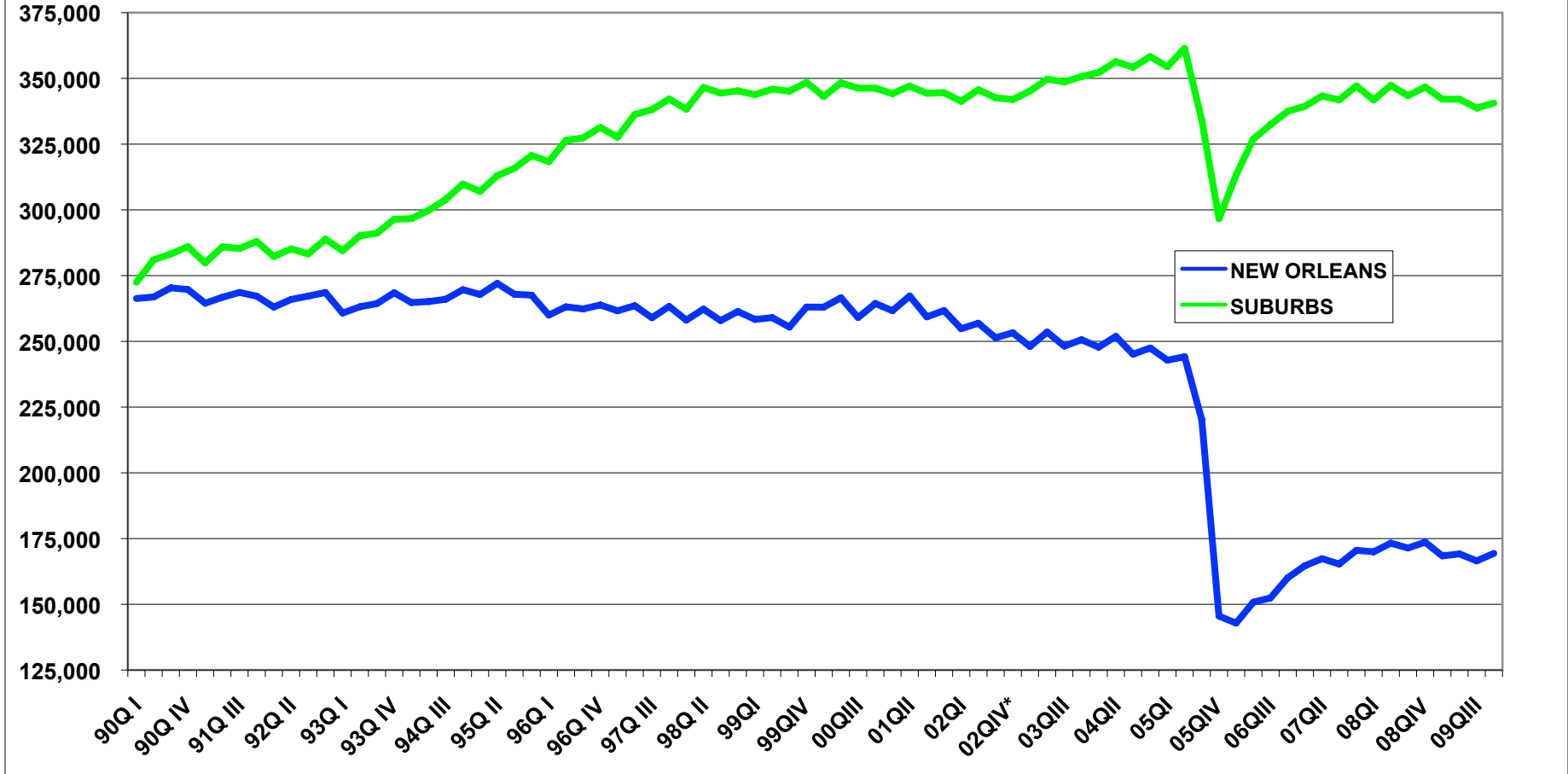
QUARTERLY PAYROLL

Chart 10



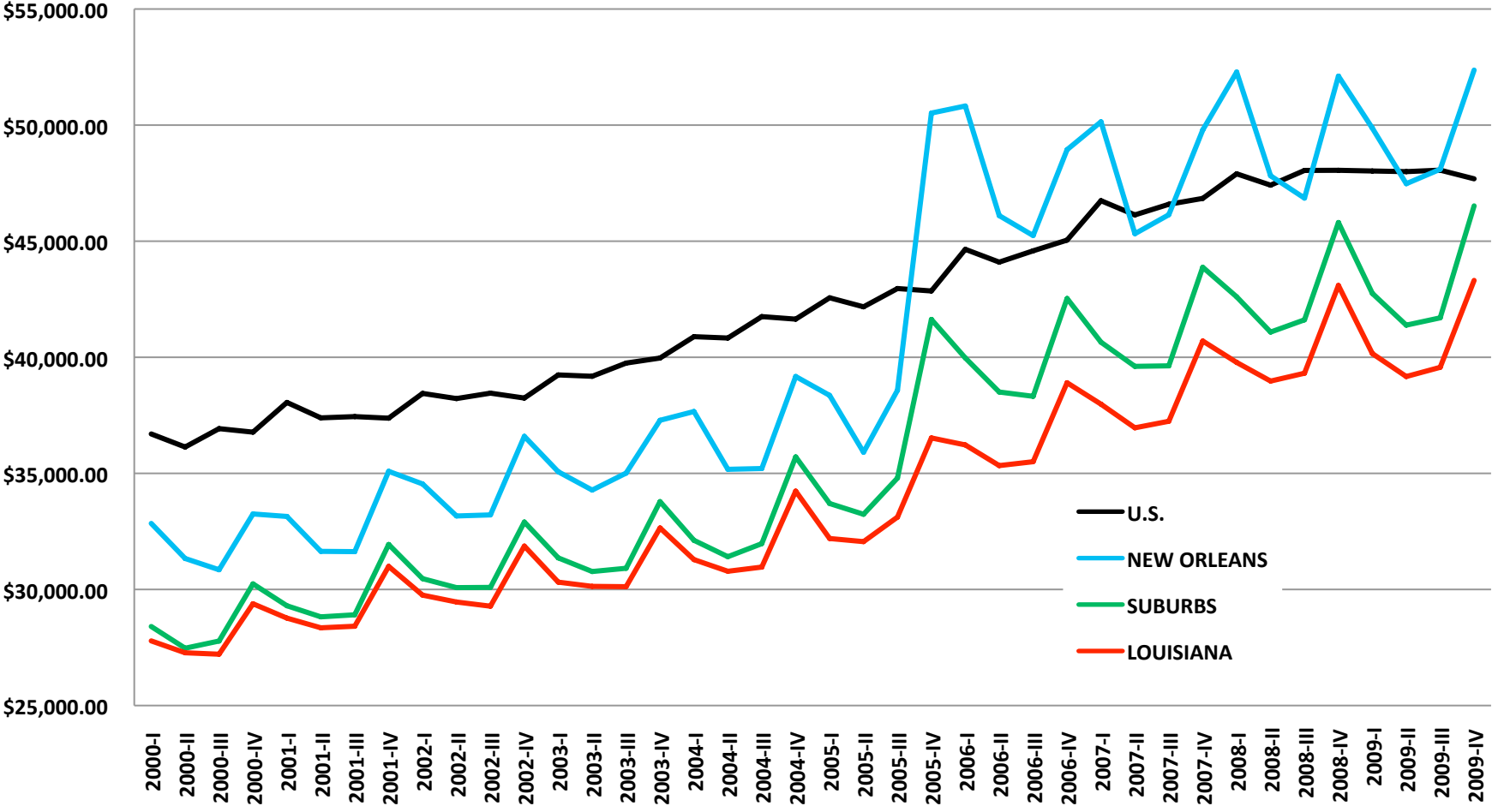
PAYROLL EMPLOYMENT

Chart 11



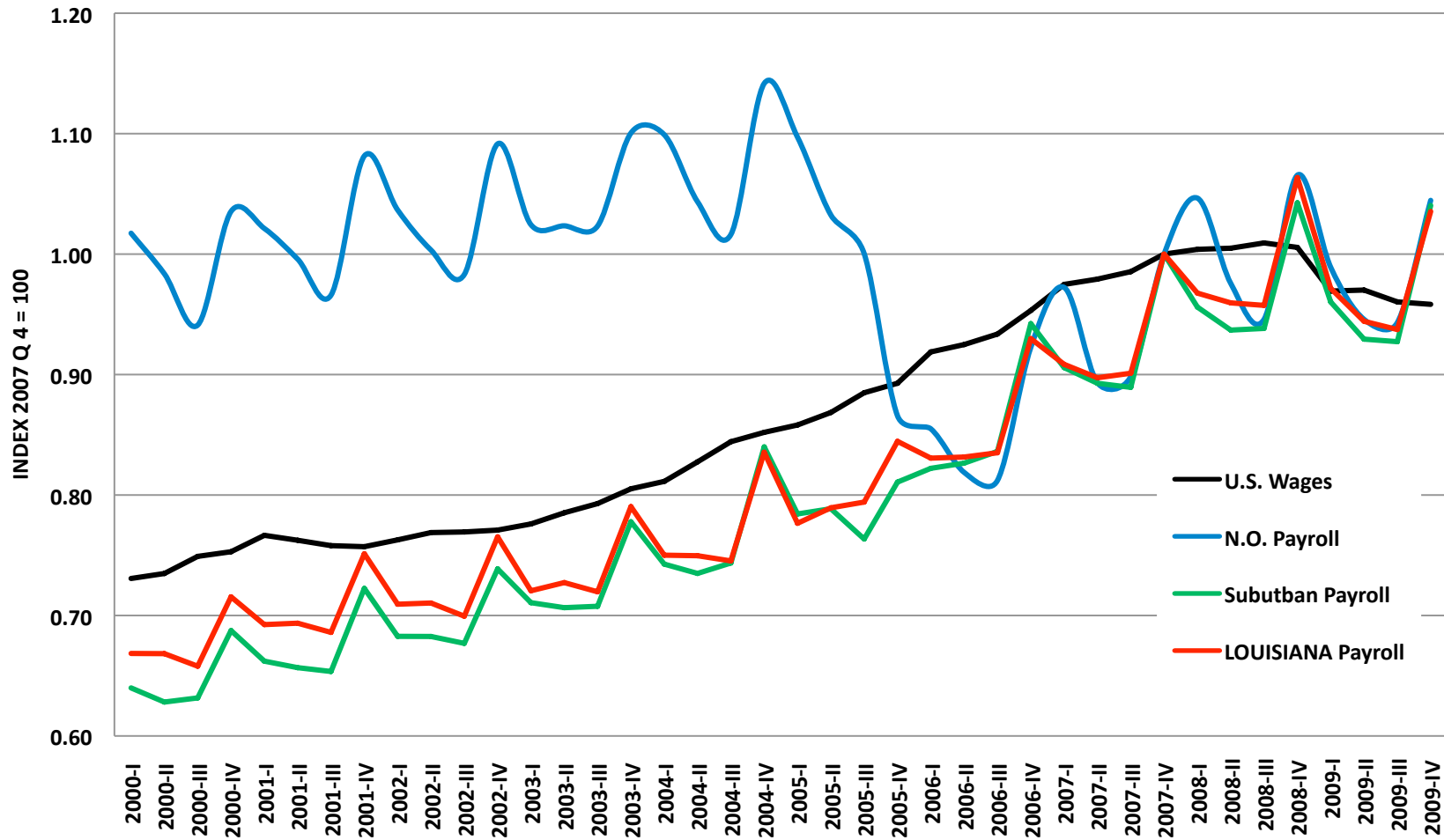
ANNUAL WAGES PER WORKER

Chart 12



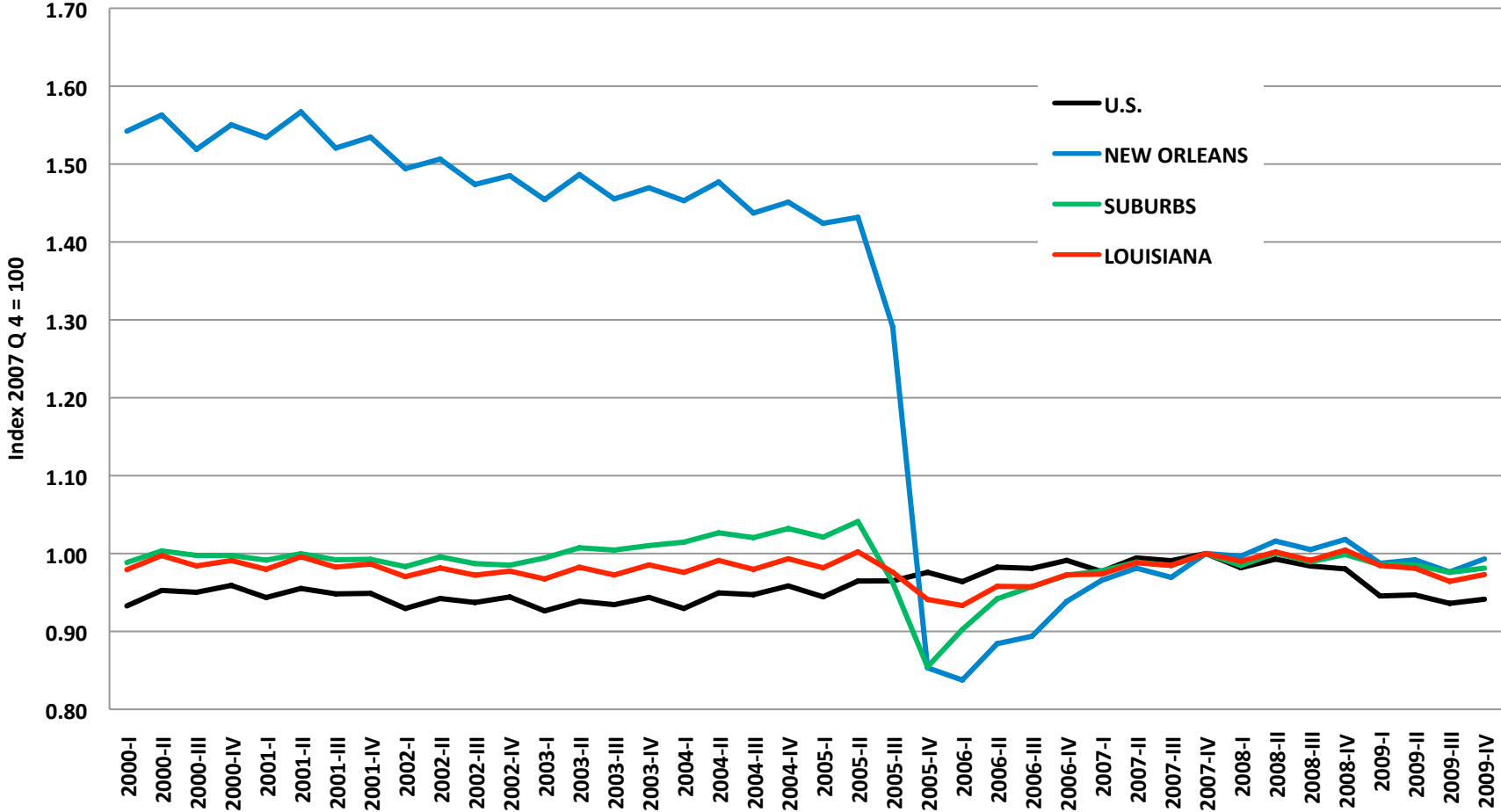
QUARTERLY WAGE INDEX

Chart 13



QUARTERLY EMPLOYMENT INDEX

Chart 14



3. ECONOMIC DATA

PAYROLL EMPLOYMENT

Table 1

	METRO AREA	NEW ORLEANS	SUBURBS	US NON- FARM	LOUISIANA
jan 01	603,789	261,675	342,114	130,433	1,851,758
feb	608,944	265,293	343,651	131,098	1,859,196
mar	612,864	266,055	346,809	131,690	1,873,449
apr	611,858	267,484	344,374	132,094	1,876,771
may	613,013	267,088	345,925	132,800	1,885,718
jun	615,728	267,518	348,210	133,179	1,894,776
jul	602,215	257,706	344,509	131,686	1,850,759
aug	602,465	257,274	345,191	131,613	1,862,319
sep	606,914	263,294	343,620	131,871	1,874,714
oct	604,137	261,196	342,941	132,072	1,867,762
nov	607,183	263,147	344,036	131,880	1,871,190
dec	608,463	263,394	345,069	131,491	1,871,176
jan 02	590,892	252,547	338,345	128,602	1,827,144
feb	592,524	254,444	338,080	129,069	1,832,208
mar	596,068	254,662	341,406	129,672	1,842,877
apr	601,975	258,726	343,249	130,257	1,854,221
may	599,915	255,380	344,535	131,023	1,860,324
jun	603,604	256,400	347,204	131,404	1,866,556
jul	593,044	251,146	341,898	129,959	1,830,193
aug	593,908	250,911	342,997	130,044	1,841,310
sep	593,442	251,483	341,959	130,559	1,850,749
oct	593,248	252,281	340,967	131,227	1,848,046
nov	599,153	254,951	344,202	131,346	1,858,634
dec	599,196	253,373	345,823	130,933	1,860,783
jan 03	593,463	248,441	345,022	128,248	1,833,822
feb	596,914	250,261	346,653	128,660	1,839,874
mar	598,192	250,398	347,794	129,148	1,845,727
apr	603,507	254,587	348,920	129,800	1,854,925
may	603,330	252,530	350,800	130,559	1,864,627
jun	604,500	253,360	351,140	130,890	1,869,036
jul	597,858	249,013	348,845	129,549	1,835,938
aug	597,111	248,352	348,759	129,601	1,846,758
sep	598,214	249,315	348,899	130,253	1,858,714
oct	598,784	249,098	349,686	131,045	1,867,882
nov	603,729	252,260	351,469	131,207	1,872,797
dec	604,725	251,703	353,022	131,026	1,876,543
jan 04	596,409	245,333	351,076	128,365	1,839,477
feb	600,094	248,064	352,030	128,976	1,846,998
mar	603,510	250,005	353,505	130,019	1,863,013
apr	607,585	251,738	355,847	131,139	1,871,291
may	607,902	251,560	356,342	132,047	1,872,763
jun	609,305	252,398	356,907	132,495	1,880,525
jul	601,405	244,591	356,814	131,334	1,850,277
aug	600,061	246,109	353,952	131,351	1,854,828
sep	596,531	244,587	351,944	132,068	1,861,089
oct	602,109	246,345	355,764	133,050	1,870,339
nov	607,440	248,401	359,039	133,301	1,883,295
dec	607,719	247,692	360,027	133,074	1,888,073

PAYROLL EMPLOYMENT

Table 1 (Continued)

	METRO AREA	NEW ORLEANS	SUBURBS	US NON- FARM	LOUISIANA
jan 05	595,468	241,680	353,788	130,369	1,848,046
feb	595,440	242,331	353,109	131,195	1,853,632
mar	601,023	244,519	356,504	132,038	1,870,635
apr	604,097	243,699	360,398	133,247	1,890,333
may	603,897	243,019	360,878	134,058	1,897,475
jun	608,648	245,736	362,912	134,728	1,906,525
jul	601,544	241,175	360,369	133,665	1,884,720
aug	601,085	241,264	359,821	133,910	1,889,517
sep	460,468	178,135	282,333	134,533	1,771,024
oct	428,392	143,796	284,596	135,260	1,738,128
nov	441,800	143,332	298,468	135,817	1,763,364
dec	456,243	149,425	306,818	135,614	1,779,151
jan 06	445,224	138,068	307,156	132,961	1,742,852
feb	455,153	142,389	312,764	133,887	1,761,472
mar	468,039	148,070	319,969	134,868	1,789,152
apr	471,393	148,644	322,749	135,780	1,795,216
may	476,650	150,446	326,204	136,584	1,810,232
jun	485,207	153,327	331,880	137,083	1,821,745
jul	481,554	150,370	331,184	135,908	1,788,236
aug	484,937	152,163	332,774	136,110	1,806,416
sep	487,970	154,734	333,236	136,777	1,831,717
oct	491,860	157,728	334,132	137,475	1,835,925
nov	498,421	159,964	338,457	137,857	1,847,697
dec	502,283	162,514	339,769	137,747	1,860,092
jan 07	498,808	161,849	336,959	134,952	1,826,508
feb	503,386	164,380	339,006	135,641	1,840,474
mar	509,997	167,758	342,239	136,533	1,862,790
apr	507,149	166,865	340,284	137,341	1,860,702
may	510,945	166,907	344,038	138,289	1,872,668
jun	513,847	168,258	345,589	138,791	1,878,190
jul	504,359	163,625	340,734	137,410	1,846,231
aug	508,559	166,128	342,431	137,524	1,868,334
sep	508,513	166,227	342,286	138,075	1,880,549
oct	513,317	168,603	344,714	138,837	1,888,204
nov	518,040	171,062	346,978	139,150	1,898,213
dec	521,687	171,966	349,721	138,934	1,904,963

PAYROLL EMPLOYMENT

Table 1 (Continued)

	METRO AREA	NEW ORLEANS	SUBURBS	US NON- FARM	LOUISIANA
jan 08	508,478	167,516	340,962	135,840	1,864,892
feb	511,885	170,715	341,170	136,356	1,878,379
mar	514,899	171,647	343,252	136,944	1,888,190
apr	519,290	173,134	346,156	137,543	1,892,562
may	520,751	173,475	347,276	138,190	1,902,702
jun	521,775	173,188	348,587	138,451	1,898,885
jul	514,407	169,983	344,424	137,050	1,868,593
aug	519,387	173,553	345,834	137,002	1,889,220
sep	510,778	170,698	340,080	137,119	1,877,296
oct	518,776	173,525	345,251	137,492	1,901,480
nov	520,294	173,715	346,579	136,882	1,907,605
dec	521,937	173,651	348,286	135,917	1,910,285
jan 09	509,390	167,357	342,033	131,555	1,864,462
feb	511,324	168,975	342,349	131,314	1,866,692
mar	510,861	168,879	341,982	131,175	1,867,437
apr	510,553	169,585	340,968	131,335	1,860,523
may	511,535	169,024	342,511	131,675	1,864,723
jun	511,623	168,891	342,732	131,522	1,853,589
jul	505,694	166,117	339,577	129,970	1,822,508
aug	505,622	167,151	338,471	129,871	1,827,591
sep	504,396	166,267	338,129	130,243	1,832,649
oct	509,147	169,204	339,943	130,889	1,841,799
nov	510,620	169,466	341,154	130,969	1,848,337
dec	510,260	169,435	340,825	130,431	1,842,516
jan 10				127,612	

PAYROLL EMPLOYMENT GROWTH

Table 2

	METRO AREA	NEW ORLEANS	SUBURBS	US NON- FARM	LOUISIANA
jan 02	-2.14%	-3.49%	-1.10%	-1.40%	-1.33%
feb	-2.70%	-4.09%	-1.62%	-1.55%	-1.45%
mar	-2.74%	-4.28%	-1.56%	-1.53%	-1.63%
apr	-1.62%	-3.27%	-0.33%	-1.39%	-1.20%
may	-2.14%	-4.38%	-0.40%	-1.34%	-1.35%
jun	-1.97%	-4.16%	-0.29%	-1.33%	-1.49%
jul	-1.52%	-2.55%	-0.76%	-1.31%	-1.11%
aug	-1.42%	-2.47%	-0.64%	-1.19%	-1.13%
sep	-2.22%	-4.49%	-0.48%	-0.99%	-1.28%
oct	-1.80%	-3.41%	-0.58%	-0.64%	-1.06%
nov	-1.32%	-3.11%	0.05%	-0.40%	-0.67%
dec	-1.52%	-3.80%	0.22%	-0.42%	-0.56%
jan 03	0.44%	-1.63%	1.97%	-0.28%	0.37%
feb	0.74%	-1.64%	2.54%	-0.32%	0.42%
mar	0.36%	-1.67%	1.87%	-0.40%	0.15%
apr	0.25%	-1.60%	1.65%	-0.35%	0.04%
may	0.57%	-1.12%	1.82%	-0.35%	0.23%
jun	0.15%	-1.19%	1.13%	-0.39%	0.13%
jul	0.81%	-0.85%	2.03%	-0.32%	0.31%
aug	0.54%	-1.02%	1.68%	-0.34%	0.30%
sep	0.80%	-0.86%	2.03%	-0.23%	0.43%
oct	0.93%	-1.26%	2.56%	-0.14%	1.07%
nov	0.76%	-1.06%	2.11%	-0.11%	0.76%
dec	0.92%	-0.66%	2.08%	0.07%	0.85%
jan 04	0.50%	-1.25%	1.75%	0.09%	0.31%
feb	0.53%	-0.88%	1.55%	0.25%	0.39%
mar	0.89%	-0.16%	1.64%	0.67%	0.94%
apr	0.68%	-1.12%	1.99%	1.03%	0.88%
may	0.76%	-0.38%	1.58%	1.14%	0.44%
jun	0.79%	-0.38%	1.64%	1.23%	0.61%
jul	0.59%	-1.78%	2.28%	1.38%	0.78%
aug	0.49%	-0.90%	1.49%	1.35%	0.44%
sep	-0.28%	-1.90%	0.87%	1.39%	0.13%
oct	0.56%	-1.11%	1.74%	1.53%	0.13%
nov	0.61%	-1.53%	2.15%	1.60%	0.56%
dec	0.50%	-1.59%	1.98%	1.56%	0.61%

PAYROLL EMPLOYMENT GROWTH

Table 2 (Continued)

	METRO AREA	NEW ORLEANS	SUBURBS	US NON- FARM	LOUISIANA
jan 05	-0.16%	-1.49%	0.77%	1.56%	0.47%
feb	-0.78%	-2.31%	0.31%	1.72%	0.36%
mar	-0.41%	-2.19%	0.85%	1.55%	0.41%
apr	-0.57%	-3.19%	1.28%	1.61%	1.02%
may	-0.66%	-3.40%	1.27%	1.52%	1.32%
jun	-0.11%	-2.64%	1.68%	1.69%	1.38%
jul	0.02%	-1.40%	1.00%	1.77%	1.86%
aug	0.17%	-1.97%	1.66%	1.95%	1.87%
sep	-22.81%	-27.17%	-19.78%	1.87%	-4.84%
oct	-28.85%	-41.63%	-20.00%	1.66%	-7.07%
nov	-27.27%	-42.30%	-16.87%	1.89%	-6.37%
dec	-24.93%	-39.67%	-14.78%	1.91%	-5.77%
jan 06	-25.23%	-42.87%	-13.18%	1.99%	-5.69%
feb	-23.56%	-41.24%	-11.43%	2.05%	-4.97%
mar	-22.13%	-39.44%	-10.25%	2.14%	-4.36%
apr	-21.97%	-39.01%	-10.45%	1.90%	-5.03%
may	-21.07%	-38.09%	-9.61%	1.88%	-4.60%
jun	-20.28%	-37.60%	-8.55%	1.75%	-4.45%
jul	-19.95%	-37.65%	-8.10%	1.68%	-5.12%
aug	-19.32%	-36.93%	-7.52%	1.64%	-4.40%
sep	5.97%	-13.14%	18.03%	1.67%	3.43%
oct	14.82%	9.69%	17.41%	1.64%	5.63%
nov	12.82%	11.60%	13.40%	1.50%	4.78%
dec	10.09%	8.76%	10.74%	1.57%	4.55%
jan 07	12.04%	17.22%	9.70%	1.50%	4.80%
feb	10.60%	15.44%	8.39%	1.31%	4.48%
mar	8.96%	13.30%	6.96%	1.23%	4.12%
apr	7.59%	12.26%	5.43%	1.15%	3.65%
may	7.20%	10.94%	5.47%	1.25%	3.45%
jun	5.90%	9.74%	4.13%	1.25%	3.10%
jul	4.74%	8.81%	2.88%	1.11%	3.24%
aug	4.87%	9.18%	2.90%	1.04%	3.43%
sep	4.21%	7.43%	2.72%	0.95%	2.67%
oct	4.36%	6.89%	3.17%	0.99%	2.85%
nov	3.94%	6.94%	2.52%	0.94%	2.73%
dec	3.86%	5.82%	2.93%	0.86%	2.41%

PAYROLL EMPLOYMENT GROWTH

Table 2 (Continued)

	METRO AREA	NEW ORLEANS	SUBURBS	US NON- FARM	LOUISIANA
jan 08	1.94%	3.50%	1.19%	0.66%	2.10%
feb	1.69%	3.85%	0.64%	0.53%	2.06%
mar	0.96%	2.32%	0.30%	0.30%	1.36%
apr	2.39%	3.76%	1.73%	0.15%	1.71%
may	1.92%	3.94%	0.94%	-0.07%	1.60%
jun	1.54%	2.93%	0.87%	-0.24%	1.10%
jul	1.99%	3.89%	1.08%	-0.26%	1.21%
aug	2.13%	4.47%	0.99%	-0.38%	1.12%
sep	0.45%	2.69%	-0.64%	-0.69%	-0.17%
oct	1.06%	2.92%	0.16%	-0.97%	0.70%
nov	0.44%	1.55%	-0.11%	-1.63%	0.49%
dec	0.05%	0.98%	-0.41%	-2.17%	0.28%
jan 09	0.18%	-0.09%	0.31%	-3.15%	-0.02%
feb	-0.11%	-1.02%	0.35%	-3.70%	-0.62%
mar	-0.78%	-1.61%	-0.37%	-4.21%	-1.10%
apr	-1.68%	-2.05%	-1.50%	-4.51%	-1.69%
may	-1.77%	-2.57%	-1.37%	-4.71%	-2.00%
jun	-1.95%	-2.48%	-1.68%	-5.00%	-2.39%
jul	-1.69%	-2.27%	-1.41%	-5.17%	-2.47%
aug	-2.65%	-3.69%	-2.13%	-5.21%	-3.26%
sep	-1.25%	-2.60%	-0.57%	-5.01%	-2.38%
oct	-1.86%	-2.49%	-1.54%	-4.80%	-3.14%
nov	-1.86%	-2.45%	-1.57%	-4.32%	-3.11%
dec	-2.24%	-2.43%	-2.14%	-4.04%	-3.55%
jan 10				-3.00%	

**U.S. GROSS DOMESTIC
PRODUCT**

Table 3

	CURRENT VALUE	REAL VALUE
90Q I	\$5,708.1	\$8,027.7
90Q II	\$5,797.4	\$8,059.6
90Q III	\$5,850.6	\$8,059.5
90Q IV	\$5,846.0	\$7,988.9
91Q I	\$5,880.2	\$7,950.2
91Q II	\$5,962.0	\$8,003.8
91Q III	\$6,033.7	\$8,037.5
91Q IV	\$6,092.5	\$8,069.0
92Q I	\$6,190.7	\$8,157.6
92Q II	\$6,295.2	\$8,244.3
92Q III	\$6,389.7	\$8,329.4
92Q IV	\$6,493.6	\$8,417.0
93Q I	\$6,544.5	\$8,432.5
93Q II	\$6,622.7	\$8,486.4
93Q III	\$6,688.3	\$8,531.1
93Q IV	\$6,813.8	\$8,643.8
94Q I	\$6,916.3	\$8,727.9
94Q II	\$7,044.3	\$8,847.3
94Q III	\$7,131.8	\$8,904.3
94Q IV	\$7,248.2	\$9,003.2
95Q I	\$7,307.7	\$9,025.3
95Q II	\$7,355.8	\$9,044.7
95Q III	\$7,452.5	\$9,120.7
95Q IV	\$7,542.5	\$9,184.3
96Q I	\$7,638.2	\$9,247.2
96Q II	\$7,800.0	\$9,407.1
96Q III	\$7,892.7	\$9,488.9
96Q IV	\$8,023.0	\$9,592.5
97Q I	\$8,137.0	\$9,666.2
97Q II	\$8,276.8	\$9,809.6
97Q III	\$8,409.9	\$9,932.7
97Q IV	\$8,505.7	\$10,008.9
98Q I	\$8,600.6	\$10,103.4
98Q II	\$8,698.6	\$10,194.3
98Q III	\$8,847.2	\$10,328.8
98Q IV	\$9,027.5	\$10,507.6
99Q I	\$9,148.6	\$10,601.2
99Q II	\$9,252.6	\$10,684.0
99Q III	\$9,405.1	\$10,819.9
99Q IV	\$9,607.7	\$11,014.3
00Q I	\$9,709.5	\$11,043.0
00Q II	\$9,949.1	\$11,258.5
00Q III	\$10,017.5	\$11,267.9
00Q IV	\$10,129.8	\$11,334.5

**U.S. GROSS DOMESTIC
PRODUCT**

Table 3 (Continued)

	CURRENT VALUE	REAL VALUE
01QI	\$10,165.1	\$11,297.2
01QII	\$10,301.3	\$11,371.3
01QIII	\$10,305.2	\$11,340.1
01QIV	\$10,373.1	\$11,380.1
02QI	\$10,498.7	\$11,477.9
02QII	\$10,601.9	\$11,538.8
02QIII	\$10,701.7	\$11,596.4
02QIV	\$10,766.9	\$11,598.8
03QI	\$10,888.4	\$11,645.8
03QII	\$11,008.1	\$11,738.7
03QIII	\$11,255.7	\$11,935.5
03QIV	\$11,416.5	\$12,042.8
04QI	\$11,597.2	\$12,127.6
04QII	\$11,778.4	\$12,213.8
04QIII	\$11,950.5	\$12,303.5
04QIV	\$12,144.9	\$12,410.3
05QI	\$12,379.5	\$12,534.1
05QII	\$12,516.8	\$12,587.5
05QIII	\$12,741.6	\$12,683.2
05QIV	\$12,915.6	\$12,748.7
06QI	\$13,183.5	\$12,915.9
06QII	\$13,347.8	\$12,962.5
06QIII	\$13,452.9	\$12,965.9
06QIV	\$13,611.5	\$13,060.7
07QI	\$13,789.5	\$13,089.3
07QII	\$14,008.2	\$13,194.1
07QIII	\$14,158.2	\$13,268.5
07QIV	\$14,291.3	\$13,363.5
08QI	\$14,328.4	\$13,339.2
08QII	\$14,471.8	\$13,359.0
08QIII	\$14,484.9	\$13,223.5
08QIV	\$14,191.2	\$12,993.7
09QI	\$14,049.7	\$12,832.6
09QII	\$14,034.5	\$12,810.0
09QIII	\$14,114.7	\$12,860.8
09QIV	\$14,277.3	\$13,019.0
10QI	\$14,446.4	\$13,138.8
10QII	\$14,597.7	\$13,216.5

U.S. EMPLOYMENT

Table 4

	NON- FARM	TOTAL CIVILIAN	UNEMPLOYED	UNEMPLOY. %
90Q I	108,082	117,374	7,187	5.77%
90Q II	110,118	119,296	6,679	5.30%
90Q III	109,648	119,920	7,049	5.55%
90Q IV	110,099	118,583	7,271	5.78%
91Q I	107,457	116,073	8,968	7.17%
91Q II	108,639	118,017	8,551	6.76%
91Q III	108,280	118,860	8,500	6.67%
91Q IV	109,122	117,924	8,494	6.72%
92Q I	106,997	116,294	10,167	8.04%
92Q II	108,959	118,665	9,630	7.51%
92Q III	108,833	119,898	9,673	7.47%
92Q IV	110,115	119,111	8,981	7.01%
93Q I	108,568	117,674	9,880	7.75%
93Q II	110,897	120,170	9,038	7.00%
93Q III	111,140	121,681	8,727	6.69%
93Q IV	112,770	121,512	8,116	6.26%
94Q I	111,440	120,416	9,209	7.10%
94Q II	114,304	122,805	7,995	6.11%
94Q III	114,784	124,257	7,843	5.94%
94Q IV	116,635	124,783	6,939	5.27%
95Q I	115,245	123,294	7,755	5.92%
95Q II	117,523	124,851	7,430	5.62%
95Q III	117,485	125,882	7,505	5.63%
95Q IV	118,937	125,571	6,927	5.23%
96Q I	117,208	124,085	7,943	6.02%
96Q II	119,863	126,495	7,222	5.40%
96Q III	120,082	128,084	7,087	5.24%
96Q IV	121,680	128,166	6,691	4.96%
97Q I	120,134	127,132	7,660	5.68%
97Q II	122,911	129,552	6,681	4.90%
97Q III	123,083	130,729	6,659	4.85%
97Q IV	124,977	130,818	5,955	4.35%
98Q I	123,387	129,505	6,896	5.06%
98Q II	126,100	131,492	5,980	4.35%
98Q III	126,259	132,280	6,260	4.52%
98Q IV	127,973	132,578	5,702	4.12%
99Q I	126,355	131,759	6,429	4.65%
99Q II	129,129	133,453	5,822	4.18%
99Q III	129,333	134,206	5,935	4.24%
99Q IV	131,156	134,534	5,332	3.81%
00Q I	129,572	135,485	6,223	4.39%
00Q II	132,335	137,176	5,544	3.88%
00Q III	132,004	137,289	5,750	4.02%
00Q IV	133,229	137,613	5,251	3.68%

U.S. EMPLOYMENT

Table 4 (Continued)

	NON-FARM	TOTAL CIVILIAN	UNEMPLOYED	UNEMPLOY. %
01QI	131,073	136,638	6,560	4.58%
01QII	132,691	137,293	6,240	4.35%
01QIII	131,724	137,294	6,880	4.77%
01QIV	131,814	136,508	7,522	5.22%
02QI	129,114	135,059	8,883	6.17%
02QII	130,895	136,548	8,327	5.75%
02QIII	130,187	137,389	8,251	5.67%
02QIV	131,168	136,945	8,049	5.55%
03QI	128,685	136,374	9,224	6.34%
03QII	130,417	137,820	8,883	6.06%
03QIII	129,801	138,124	8,862	6.03%
03QIV	131,093	138,625	8,128	5.54%
04QI	129,120	137,333	8,916	6.10%
04QII	131,894	139,050	8,082	5.49%
04QIII	131,584	140,189	8,001	5.40%
04QIV	133,142	140,435	7,598	5.13%
05QI	131,201	139,180	8,326	5.64%
05QII	134,011	141,662	7,497	5.03%
05QIII	134,036	143,001	7,475	4.97%
05QIV	135,564	143,075	7,064	4.70%
06QI	133,905	142,082	7,518	5.03%
06QII	136,482	144,221	6,933	4.59%
06QIII	136,265	145,332	7,104	4.66%
06QIV	137,693	146,073	6,446	4.23%
07QI	135,709	144,692	7,321	4.82%
07QII	138,130	146,040	6,771	4.43%
07QIII	137,638	146,723	7,199	4.68%
07QIV	138,917	146,732	7,020	4.57%
08QI	136,380	144,755	8,067	5.28%
08QII	137,919	146,166	8,099	5.25%
08QIII	136,691	146,029	9,370	6.03%
08QIV	136,172	144,501	10,161	6.57%
09QI	131,348	140,125	13,534	8.81%
09QII	131,511	140,592	14,105	9.12%
09QIII	130,028	140,069	14,854	9.59%
09QIV	130,763	138,724	14,565	9.50%
10QI	128,219	137,332	15,939	10.40%
10QII	130,894	139,560	14,621	9.48%

QUARTERLY PAYROLL

Table 5

	ORLEANS	SUBURBAN	N.O.METRO	LOUISIANA
90Q I	\$1,507,780,352	\$1,381,819,516	\$2,889,599,868	\$7,582,563,982
90Q II	\$1,494,633,179	\$1,421,701,843	\$2,916,335,022	\$7,846,604,647
90Q III	\$1,479,156,579	\$1,321,964,164	\$2,801,120,743	\$7,787,382,682
90Q IV	\$1,694,109,555	\$1,589,140,893	\$3,283,250,448	\$8,718,669,392
91Q I	\$1,558,019,617	\$1,473,051,815	\$3,031,071,432	\$7,994,343,004
91Q II	\$1,573,273,265	\$1,519,791,930	\$3,093,065,195	\$8,311,634,016
91Q III	\$1,555,722,910	\$1,512,567,576	\$3,068,290,486	\$8,239,051,405
91Q IV	\$1,770,137,674	\$1,662,509,451	\$3,432,647,125	\$9,160,085,526
92Q I	\$1,623,613,591	\$1,529,769,745	\$3,153,383,336	\$8,373,321,502
92Q II	\$1,628,916,583	\$1,563,030,408	\$3,191,946,991	\$8,663,609,942
92Q III	\$1,581,739,134	\$1,554,076,099	\$3,135,815,233	\$8,511,531,148
92Q IV	\$1,869,414,954	\$1,776,366,709	\$3,645,781,663	\$9,789,976,883
93Q I	\$1,604,929,341	\$1,536,560,894	\$3,141,490,235	\$8,434,000,441
93Q II	\$1,661,217,870	\$1,613,625,669	\$3,274,843,539	\$9,008,165,583
93Q III	\$1,685,206,671	\$1,633,167,687	\$3,318,374,358	\$9,005,640,173
93Q IV	\$1,890,984,292	\$1,841,375,866	\$3,732,360,158	\$10,092,285,013
94Q I	\$1,711,868,553	\$1,680,457,565	\$3,392,326,118	\$9,237,051,877
94Q II	\$1,671,186,094	\$1,704,964,867	\$3,376,150,961	\$9,353,966,153
94Q III	\$1,751,550,531	\$1,781,919,688	\$3,533,470,219	\$9,749,033,254
94Q IV	\$1,866,941,517	\$1,903,930,843	\$3,770,872,360	\$10,405,217,713
95Q I	\$1,832,203,775	\$1,811,774,763	\$3,643,978,538	\$9,918,056,825
95Q II	\$1,780,761,362	\$1,852,342,888	\$3,633,104,250	\$10,025,293,930
95Q III	\$1,791,079,882	\$1,870,887,976	\$3,661,967,858	\$10,216,705,729
95Q IV	\$1,935,808,744	\$2,044,694,500	\$3,980,503,244	\$10,979,424,268
96Q I	\$1,814,120,251	\$1,944,820,125	\$3,758,940,376	\$10,421,795,207
96Q II	\$1,753,966,663	\$1,991,298,066	\$3,745,264,729	\$10,533,308,860
96Q III	\$1,766,434,695	\$1,954,455,498	\$3,720,890,193	\$10,553,336,123
96Q IV	\$1,960,719,473	\$2,159,233,422	\$4,119,952,895	\$11,609,286,502
97Q I	\$1,947,497,602	\$2,076,911,971	\$4,024,409,573	\$11,062,335,397
97Q II	\$1,838,619,340	\$2,119,378,223	\$3,957,997,563	\$11,178,545,414
97Q III	\$1,826,169,382	\$2,152,462,312	\$3,978,631,694	\$11,318,346,539
97Q IV	\$2,101,534,705	\$2,420,445,605	\$4,521,980,310	\$12,717,945,103
98Q I	\$1,995,972,348	\$2,249,521,395	\$4,245,493,743	\$11,816,533,280
98Q II	\$1,986,331,244	\$2,312,914,751	\$4,299,245,995	\$12,151,742,190
98Q III	\$1,911,392,390	\$2,295,205,329	\$4,206,597,719	\$12,038,289,214
98Q IV	\$2,159,795,095	\$2,584,563,937	\$4,744,359,032	\$13,411,761,511
99Q I	\$1,989,401,629	\$2,301,871,860	\$4,291,273,489	\$11,969,526,722
99Q II	\$1,956,007,379	\$2,351,027,057	\$4,307,034,436	\$12,246,121,706
99Q III	\$1,951,905,634	\$2,341,447,725	\$4,293,353,359	\$12,269,781,071
99Q IV	\$2,193,112,269	\$2,610,163,375	\$4,803,275,644	\$13,682,252,076
00Q I	\$2,159,648,526	\$2,436,594,990	\$4,596,243,516	\$12,891,971,219
00Q II	\$2,088,125,795	\$2,391,876,398	\$4,480,002,193	\$12,888,857,267
00Q III	\$1,997,719,181	\$2,404,947,484	\$4,402,666,665	\$12,687,924,626
00Q IV	\$2,198,002,343	\$2,617,828,294	\$4,815,830,637	\$13,798,634,516

QUARTERLY PAYROLL

Table 5 (Continued)

	ORLEANS	SUBURBAN	N.O.METRO	LOUISIANA
01QI	\$2,167,996,660	\$2,521,147,417	\$4,689,144,077	\$13,354,069,303
01QII	\$2,113,963,253	\$2,500,580,746	\$4,614,543,999	\$13,376,536,735
01QIII	\$2,050,458,938	\$2,488,519,539	\$4,538,978,477	\$13,229,386,586
01QIV	\$2,295,774,377	\$2,751,056,670	\$5,046,831,047	\$14,488,665,348
02QI	\$2,200,572,944	\$2,599,585,788	\$4,800,158,732	\$13,680,679,519
02QII	\$2,129,986,110	\$2,599,205,561	\$4,729,191,671	\$13,699,618,276
02QIII	\$2,086,878,309	\$2,577,395,896	\$4,664,274,205	\$13,488,641,065
02QIV	\$2,317,070,070	\$2,812,841,727	\$5,129,911,797	\$14,759,343,733
03QI	\$2,174,622,549	\$2,705,997,184	\$4,880,619,733	\$13,895,795,528
03QII	\$2,172,671,926	\$2,690,210,397	\$4,862,882,323	\$14,026,585,197
03QIII	\$2,172,322,973	\$2,694,624,992	\$4,866,947,965	\$13,879,089,315
03QIV	\$2,336,103,536	\$2,961,847,399	\$5,297,950,935	\$15,242,923,256
04QI	\$2,333,263,096	\$2,827,926,300	\$5,161,189,396	\$14,465,297,392
04QII	\$2,215,073,474	\$2,798,438,079	\$5,013,511,553	\$14,456,670,190
04QIII	\$2,157,358,147	\$2,831,486,818	\$4,988,844,965	\$14,373,427,246
04QIV	\$2,423,575,985	\$3,198,438,718	\$5,622,014,703	\$16,113,013,061
05QI	\$2,328,784,439	\$2,986,496,892	\$5,315,281,331	\$14,976,123,796
05QII	\$2,191,744,919	\$3,002,998,382	\$5,194,743,301	\$15,224,067,077
05QIII	\$2,123,635,163	\$2,907,165,763	\$5,030,800,926	\$15,315,702,846
05QIV	\$1,837,847,421	\$3,087,145,291	\$4,924,992,712	\$16,287,637,412
06QI	\$1,814,932,896	\$3,130,689,793	\$4,945,622,689	\$16,019,308,521
06QII	\$1,738,147,208	\$3,147,131,212	\$4,885,278,420	\$16,036,745,483
06QIII	\$1,723,990,024	\$3,184,220,374	\$4,908,210,398	\$16,105,306,741
06QIV	\$1,958,474,097	\$3,588,196,514	\$5,546,670,611	\$17,932,501,499
07QI	\$2,064,157,880	\$3,449,191,370	\$5,513,349,250	\$17,520,948,273
07QII	\$1,896,068,109	\$3,399,492,059	\$5,295,560,168	\$17,305,677,777
07QIII	\$1,907,044,567	\$3,386,681,755	\$5,293,726,322	\$17,378,490,358
07QIV	\$2,122,822,721	\$3,807,894,112	\$5,930,716,833	\$19,285,651,169
08QI	\$2,221,528,869	\$3,640,440,565	\$5,861,969,434	\$18,661,206,940
08QII	\$2,071,233,648	\$3,567,678,939	\$5,638,912,587	\$18,504,886,448
08QIII	\$2,007,876,857	\$3,572,972,458	\$5,580,849,315	\$18,464,762,901
08QIV	\$2,261,971,979	\$3,970,173,435	\$6,232,145,414	\$20,510,692,856
09QI	\$2,099,522,744	\$3,656,636,301	\$5,756,159,045	\$18,736,548,538
09QII	\$2,007,830,663	\$3,539,072,794	\$5,546,903,457	\$18,210,405,887
09QIII	\$2,002,182,572	\$3,531,098,406	\$5,533,280,978	\$18,077,962,482
09QIV	\$2,217,490,007	\$3,961,769,303	\$6,179,259,310	\$19,969,149,995

PAY ROLL EMPLOYMENT

Table 6

	ORLEANS	SUBURBAN	N.O.METRO	LOUISIANA
90Q I	266,299	272,460	538,759	1,510,870
90Q II	266,871	280,985	547,856	1,551,454
90Q III	270,340	283,233	553,573	1,553,277
90Q IV	269,714	286,012	555,726	1,571,670
91Q I	264,505	279,820	544,325	1,541,112
91Q II	266,760	285,907	552,667	1,572,773
91Q III	268,595	285,310	553,905	1,570,290
91Q IV	267,186	288,007	555,193	1,584,857
92Q I	263,044	282,276	545,320	1,553,727
92Q II	265,929	285,156	551,085	1,588,269
92Q III	267,209	283,269	550,478	1,579,310
92Q IV	268,575	288,849	557,424	1,606,135
93Q I	260,766	284,484	545,250	1,577,432
93Q II	263,136	290,115	553,251	1,614,403
93Q III	264,378	291,141	555,519	1,616,559
93Q IV	268,478	296,427	564,905	1,645,923
94Q I	264,748	296,650	561,398	1,632,686
94Q II	265,125	299,809	564,934	1,662,582
94Q III	266,007	303,947	569,954	1,680,463
94Q IV	269,647	309,809	579,456	1,708,616
95Q I	267,828	307,043	574,871	1,687,068
95Q II	272,021	313,003	585,024	1,721,754
95Q III	267,921	315,831	583,752	1,731,349
95Q IV	267,565	320,685	588,250	1,745,525
96Q I	259,987	318,336	578,323	1,723,188
96Q II	263,129	326,426	589,555	1,762,409
96Q III	262,341	327,405	589,746	1,761,323
96Q IV	263,832	331,356	595,188	1,783,586
97Q I	261,606	327,651	589,257	1,759,135
97Q II	263,558	336,254	599,812	1,800,139
97Q III	258,979	338,131	597,110	1,795,781
97Q IV	263,271	342,168	605,439	1,832,799
98Q I	258,077	338,285	596,362	1,808,153
98Q II	262,249	346,576	608,825	1,853,306
98Q III	257,894	344,385	602,279	1,837,020
98Q IV	261,351	345,280	606,631	1,851,531
99Q I	258,336	343,813	602,149	1,827,590
99Q II	259,019	345,897	604,916	1,848,198
99Q III	255,427	345,137	600,564	1,841,126
99Q IV	263,059	348,464	611,523	1,867,195
00Q I	263,017	343,133	606,150	1,856,009
00Q II	266,568	348,306	614,874	1,890,399
00Q III	259,042	346,302	605,344	1,865,148
00Q IV	264,408	346,269	610,677	1,878,421

PAY ROLL EMPLOYMENT

Table 6 (Continued)

	ORLEANS	SUBURBAN	N.O.METRO	LOUISIANA
01QI	261,646	344,208	605,854	1,856,963
01QII	267,248	347,061	614,309	1,887,469
01QIII	259,316	344,337	603,653	1,861,241
01QIV	261,718	344,562	606,280	1,869,937
02QI	254,813	341,321	596,134	1,839,132
02QII	256,897	345,658	602,555	1,860,162
02QIII	251,351	342,643	593,994	1,842,792
02QIV	253,265	341,944	595,209	1,852,537
03QI	248,044	345,156	593,200	1,833,542
03QII	253,523	349,697	603,220	1,861,983
03QIII	248,187	348,682	596,869	1,843,230
03QIV	250,617	350,687	601,304	1,867,524
04QI	247,801	352,204	600,005	1,849,455
04QII	251,899	356,366	608,265	1,878,526
04QIII	245,096	354,236	599,332	1,856,849
04QIV	247,479	358,277	605,756	1,866,870
05QI	242,843	354,466	597,309	1,860,746
05QII	244,151	361,396	605,547	1,899,498
05QIII	220,191	334,175	554,366	1,849,950
05QIV	145,518	296,627	442,145	1,783,685
06QI	142,842	313,295	456,137	1,768,882
06QII	150,806	326,944	477,750	1,815,421
06QIII	152,422	332,397	484,819	1,814,587
06QIV	160,069	337,452	497,521	1,843,779
07QI	164,662	339,402	504,064	1,845,273
07QII	167,343	343,304	510,647	1,872,815
07QIII	165,327	341,817	507,144	1,866,442
07QIV	170,544	347,138	517,682	1,895,330
08QI	169,959	341,795	511,754	1,876,517
08QII	173,266	347,340	520,606	1,899,179
08QIII	171,411	343,447	514,858	1,878,749
08QIV	173,630	346,706	520,336	1,903,858
09QI	168,404	342,122	510,526	1,866,197
09QII	169,167	342,070	511,237	1,859,581
09QIII	166,512	505,238	338,726	1,827,583
09QIV	169,368	340,640	510,008	1,844,217

PERCAP QUARTERLY PAYROLL

Table 7

	ORLEANS	SUBURBAN	N.O.METRO	LOUISIANA
90Q I	\$5,661.98	\$5,533.95	\$5,363.44	\$5,018.67
90Q II	\$5,600.58	\$5,319.26	\$5,323.18	\$5,057.58
90Q III	\$5,471.47	\$5,222.40	\$5,060.07	\$5,013.52
90Q IV	\$6,281.13	\$5,923.21	\$5,908.04	\$5,547.39
91Q I	\$5,890.32	\$5,567.94	\$5,568.50	\$5,187.39
91Q II	\$5,897.71	\$5,502.74	\$5,596.62	\$5,284.70
91Q III	\$5,792.08	\$5,452.75	\$5,539.38	\$5,246.83
91Q IV	\$6,625.11	\$6,146.16	\$6,182.80	\$5,779.76
92Q I	\$6,172.40	\$5,751.87	\$5,782.63	\$5,389.18
92Q II	\$6,125.38	\$5,712.37	\$5,792.11	\$5,454.75
92Q III	\$5,919.48	\$5,583.88	\$5,696.53	\$5,389.40
92Q IV	\$6,960.50	\$6,471.95	\$6,540.41	\$6,095.36
93Q I	\$6,154.67	\$5,641.55	\$5,761.56	\$5,346.66
93Q II	\$6,313.15	\$5,726.07	\$5,919.27	\$5,579.87
93Q III	\$6,374.23	\$5,788.28	\$5,973.47	\$5,570.87
93Q IV	\$7,043.35	\$6,379.26	\$6,607.06	\$6,131.69
94Q I	\$6,466.03	\$5,770.67	\$6,042.64	\$5,657.58
94Q II	\$6,303.39	\$5,574.17	\$5,976.19	\$5,626.17
94Q III	\$6,584.60	\$5,762.68	\$6,199.57	\$5,801.40
94Q IV	\$6,923.65	\$6,026.10	\$6,507.61	\$6,089.85
95Q I	\$6,840.97	\$5,967.25	\$6,338.78	\$5,878.87
95Q II	\$6,546.41	\$5,689.28	\$6,210.18	\$5,822.72
95Q III	\$6,685.10	\$5,671.01	\$6,273.16	\$5,901.01
95Q IV	\$7,234.91	\$6,036.48	\$6,766.69	\$6,290.04
96Q I	\$6,977.73	\$5,698.76	\$6,499.72	\$6,047.97
96Q II	\$6,665.81	\$5,373.24	\$6,352.70	\$5,976.65
96Q III	\$6,733.35	\$5,395.26	\$6,309.31	\$5,991.71
96Q IV	\$7,431.70	\$5,917.26	\$6,922.10	\$6,508.96
97Q I	\$7,444.39	\$5,943.82	\$6,829.63	\$6,288.51
97Q II	\$6,976.15	\$5,467.95	\$6,598.73	\$6,209.82
97Q III	\$7,051.42	\$5,400.77	\$6,663.15	\$6,302.74
97Q IV	\$7,982.40	\$6,141.82	\$7,468.93	\$6,939.08
98Q I	\$7,734.02	\$6,649.78	\$7,118.99	\$6,535.14
98Q II	\$7,574.22	\$6,673.61	\$7,061.55	\$6,556.79
98Q III	\$7,411.54	\$6,664.65	\$6,984.47	\$6,553.16
98Q IV	\$8,263.96	\$7,485.41	\$7,820.83	\$7,243.61
99Q I	\$7,700.83	\$6,695.13	\$7,126.60	\$6,549.35
99Q II	\$7,551.60	\$6,796.90	\$7,120.05	\$6,625.98
99Q III	\$7,641.74	\$6,784.11	\$7,148.87	\$6,664.28
99Q IV	\$8,336.96	\$7,490.48	\$7,854.61	\$7,327.70
00Q I	\$8,211.06	\$7,101.02	\$7,582.68	\$6,946.07
00Q II	\$7,833.37	\$6,867.17	\$7,286.05	\$6,818.06
00Q III	\$7,711.95	\$6,944.65	\$7,273.00	\$6,802.64
00Q IV	\$8,312.92	\$7,560.10	\$7,886.05	\$7,345.87

PERCAP QUARTERLY PAYROLL

Table 7 (Continued)

	ORLEANS	SUBURBAN	N.O.METRO	LOUISIANA
01QI	\$8,285.99	\$7,324.49	\$7,739.73	\$7,191.35
01QII	\$7,910.12	\$7,205.02	\$7,511.76	\$7,087.02
01QIII	\$7,907.18	\$7,226.99	\$7,519.18	\$7,107.83
01QIV	\$8,771.94	\$7,984.21	\$8,324.26	\$7,748.21
02QI	\$8,636.03	\$7,616.25	\$8,052.15	\$7,438.66
02QII	\$8,291.21	\$7,519.59	\$7,848.56	\$7,364.74
02QIII	\$8,302.65	\$7,522.10	\$7,852.39	\$7,319.68
02QIV	\$9,148.80	\$8,226.03	\$8,618.67	\$7,967.10
03QI	\$8,767.07	\$7,839.93	\$8,227.61	\$7,578.66
03QII	\$8,569.93	\$7,692.98	\$8,061.54	\$7,533.14
03QIII	\$8,752.77	\$7,728.03	\$8,154.13	\$7,529.77
03QIV	\$9,321.41	\$8,445.84	\$8,810.77	\$8,162.10
04QI	\$9,415.87	\$8,029.23	\$8,601.91	\$7,821.38
04QII	\$8,793.50	\$7,852.71	\$8,242.31	\$7,695.75
04QIII	\$8,802.09	\$7,993.22	\$8,324.01	\$7,740.76
04QIV	\$9,793.06	\$8,927.28	\$9,280.99	\$8,631.03
05QI	\$9,589.67	\$8,425.34	\$8,898.71	\$8,048.45
05QII	\$8,977.01	\$8,309.44	\$8,578.60	\$8,014.78
05QIII	\$9,644.51	\$8,699.53	\$9,074.87	\$8,278.98
05QIV	\$12,629.69	\$10,407.50	\$11,138.86	\$9,131.45
06QI	\$12,705.88	\$9,992.79	\$10,842.41	\$9,056.18
06QII	\$11,525.72	\$9,625.90	\$10,225.60	\$8,833.62
06QIII	\$11,310.64	\$9,579.57	\$10,123.80	\$8,875.47
06QIV	\$12,235.19	\$10,633.21	\$11,148.62	\$9,725.95
07QI	\$12,535.73	\$10,162.55	\$10,937.80	\$9,495.04
07QII	\$11,330.43	\$9,902.28	\$10,370.30	\$9,240.46
07QIII	\$11,534.99	\$9,907.88	\$10,438.31	\$9,311.03
07QIV	\$12,447.36	\$10,969.40	\$11,456.29	\$10,175.35
08QI	\$13,070.97	\$10,650.95	\$11,454.66	\$9,944.60
08QII	\$11,954.07	\$10,271.43	\$10,831.44	\$9,743.62
08QIII	\$11,713.82	\$10,403.27	\$10,839.59	\$9,828.22
08QIV	\$13,027.54	\$11,451.12	\$11,977.16	\$10,773.23
09QI	\$12,467.18	\$10,688.11	\$11,274.96	\$10,039.96
09QII	\$11,868.93	\$10,346.05	\$10,849.96	\$9,792.75
09QIII	\$12,024.25	\$10,424.65	\$10,951.83	\$9,891.73
09QIV	\$13,092.73	\$11,630.37	\$12,116.00	\$10,827.98

AIRPORT ACTIVITY

Table 8

	DEPLANE PASSENGERS	CARGO (TONS)
90Q I	889,340	16,838.804
90Q II	906,150	17,082.358
90Q III	817,100	17,425.778
90Q IV	886,500	17,901.242
91Q I	807,200	17,349.973
91Q II	883,400	18,370.608
91Q III	787,800	17,983.798
91Q IV	835,000	19,219.342
92Q I	793,200	18,345.274
92Q II	862,100	19,515.005
92Q III	870,400	19,486.331
92Q IV	855,200	20,919.547
93Q I	794,000	19,311.339
93Q II	899,800	20,006.722
93Q III	798,400	19,677.509
93Q IV	896,100	22,368.247
94Q I	932,100	20,905.601
94Q II	950,000	22,611.873
94Q III	1,008,500	22,105.822
94Q IV	1,093,400	23,014.095
95Q I	1,051,500	21,964.587
95Q II	1,043,700	21,395.760
95Q III	965,800	20,744.042
95Q IV	1,050,600	23,235.857
96Q I	1,009,200	21,946.317
96Q II	1,091,500	22,516.380
96Q III	1,043,600	22,267.434
96Q IV	1,086,900	23,002.030
97Q I	1,087,400	22,662.071
97Q II	1,114,300	22,847.767
97Q III	1,026,000	22,665.628
97Q IV	1,200,400	20,847.754
98Q I	1,066,520	20,836.450
98Q II	1,202,650	22,772.244
98Q III	1,050,010	20,675.577
98Q IV	1,148,883	23,596.112
99QI	1,153,777	23,459.660
99QII	1,246,045	24,786.191
99QIII	1,121,642	23,664.966
99QIV	1,213,911	25,531.798
00QI	1,213,045	24,396.690
00QII	1,278,953	24,863.731
00QIII	1,170,911	23,044.795
00QIV	1,271,337	22,857.340

AIRPORT ACTIVITY

Table 8 (Continued)

	DEPLANE PASSENGERS	CARGO (TONS)
01QI	1,262,149	21,587.296
01QII	1,321,570	20,938.132
01QIII	1,097,084	19,573.845
01QIV	1,097,891	21,312.743
02QI	1,149,929	23,085.633
02QII	1,240,551	24,152.952
02QIII	1,078,452	22,072.830
02QIV	1,158,540	23,467.390
03QI	1,135,985	22,505.384
03QII	1,198,796	22,045.375
03QIII	1,093,375	21,824.032
03QIV	1,212,973	22,744.765
04QI	1,189,588	22,167.505
04QII	1,327,305	22,930.500
04QIII	1,091,418	21,084.072
04QIV	1,257,545	22,398.886
05QI	1,256,993	22,576.993
05QII	1,366,989	21,852.083
05QIII	815,389	15,681.499
05QIV	421,403	12,070.838
06QI	626,586	12,965.197
06QII	812,551	13,620.149
06QIII	775,511	11,898.150
06QIV	884,348	12,254.702
07QI	903,424	10,605.140
07QII	968,672	12,283.533
07QIII	896,548	12,937.179
07QIV	993,156	13,646.798
08QI	1,045,104	11,752.866
08QII	1,089,817	12,548.254
08QIII	870,844	10,811.974
08QIV	969,333	14,762.956
09QI	943,503	13,653.439
09QII	1,032,528	14,797.172
09QIII	899,522	14,640.836
09QIV	1,000,197	14,905.402
10QI	953,653	14,612.435

NEW ORLEANS COMMERCIAL ACTIVITY

Table 9

	HOTEL MOTEL ROOM SALES	RETAIL SALES	AUTO SALES
90Q I	\$109,145,400.00	\$847,128,920.00	\$59,722,240.00
90Q II	\$96,969,933.33	\$896,427,600.00	\$65,543,920.00
90Q III	\$67,903,200.00	\$823,993,800.00	\$66,968,280.00
90Q IV	\$96,956,333.33	\$910,346,480.00	\$55,074,760.00
91Q I	\$96,750,800.00	\$812,611,440.00	\$53,740,640.00
91Q II	\$108,108,666.67	\$870,685,440.00	\$70,171,040.00
91Q III	\$73,442,133.33	\$836,176,400.00	\$73,539,560.00
91Q IV	\$104,248,933.33	\$896,498,480.00	\$58,807,320.00
92Q I	\$110,394,800.00	\$827,669,480.00	\$65,018,120.00
92Q II	\$104,791,266.67	\$896,907,600.00	\$68,889,960.00
92Q III	\$85,775,600.00	\$853,949,240.00	\$71,933,320.00
92Q IV	\$116,483,666.67	\$951,600,840.00	\$64,522,560.00
93Q I	\$105,694,400.00	\$868,800,120.00	\$71,999,960.00
93Q II	\$112,989,533.33	\$907,780,040.00	\$81,531,760.00
93Q III	\$80,039,000.00	\$842,297,320.00	\$86,200,280.00
93Q IV	\$110,828,533.33	\$943,049,360.00	\$73,255,040.00
94Q I	\$130,832,000.00	\$915,066,040.00	\$86,899,360.00
94Q II	\$126,756,600.00	\$922,911,440.00	\$92,194,040.00
94Q III	\$95,559,533.33	\$888,535,080.00	\$93,756,720.00
94Q IV	\$119,021,533.33	\$1,011,877,760.00	\$88,604,520.00
95Q I	\$141,511,333.33	\$977,495,160.00	\$92,467,320.00
95Q II	\$122,756,066.67	\$1,058,269,640.00	\$133,817,360.00
95Q III	\$98,413,066.67	\$970,213,800.00	\$148,392,840.00
95Q IV	\$112,400,800.00	\$984,314,200.00	\$115,759,440.00
96Q I	\$137,671,133.33	\$995,657,440.00	\$114,334,440.00
96Q II	\$143,444,666.67	\$1,007,561,600.00	\$119,742,160.00
96Q III	\$117,155,866.67	\$1,042,195,400.00	\$102,375,040.00
96Q IV	\$151,619,866.67	\$1,150,413,800.00	\$87,991,960.00
97Q I	\$150,096,200.00	\$1,007,630,840.00	\$88,844,160.00
97Q II	\$159,055,533.33	\$1,074,934,440.00	\$96,554,156.00
97Q III	\$105,766,133.33	\$955,392,400.00	\$98,470,001.20
97Q IV	\$136,648,533.33	\$1,117,872,320.00	\$74,271,240.80
98Q I	\$186,594,600.00	\$1,082,665,360.00	\$93,589,840.00
98Q II	\$164,610,600.00	\$1,083,764,000.00	\$98,425,872.40
98Q III	\$123,152,933.33	\$1,016,535,520.00	\$100,389,622.80
98Q IV	\$139,378,133.33	\$1,079,469,240.00	\$91,331,512.80
99Q I	\$188,130,066.67	\$1,122,999,080.00	\$95,672,693.60
99Q II	\$175,369,733.33	\$1,153,185,640.00	\$91,152,366.40
99Q III	\$174,131,200.00	\$1,100,092,600.00	\$99,707,587.60
99Q IV	\$180,620,132.67	\$1,215,625,520.00	\$95,502,514.00
00Q I	\$213,946,133.33	\$1,117,643,120.00	\$105,416,858.40
00Q II	\$196,734,733.33	\$1,386,132,520.00	\$120,706,758.40
00Q III	\$143,163,600.00	\$1,250,515,960.00	\$112,291,456.00
00Q IV	\$200,918,466.67	\$1,290,959,720.00	\$93,345,555.60

NEW ORLEANS COMMERCIAL ACTIVITY

Table 9 (Continued)

	HOTEL MOTEL ROOM SALES	RETAIL SALES	AUTO SALES
01QI	\$225,128,666.67	\$1,220,732,840.00	\$105,415,938.00
01QII	\$210,096,666.67	\$1,213,696,360.00	\$107,398,665.20
01QIII	\$133,120,733.33	\$1,100,784,840.00	\$117,400,723.60
01QIV	\$165,357,066.67	\$1,182,420,240.00	\$109,931,422.80
02QI	\$247,791,133.33	\$1,247,960,080.00	\$112,560,164.80
02QII	\$216,157,466.67	\$1,236,583,120.00	\$117,242,770.40
02QIII	\$131,826,400.00	\$1,108,156,680.00	\$119,696,264.80
02QIV	\$184,119,364.00	\$1,229,231,211.20	\$108,782,741.20
03QI	\$212,701,182.67	\$1,315,649,910.00	\$103,998,836.00
03QII	\$189,297,493.33	\$1,208,869,718.80	\$121,464,627.20
03QIII	\$136,333,463.33	\$1,027,644,144.40	\$114,652,802.00
03QIV	\$193,717,249.33	\$1,089,865,264.80	\$96,461,950.40
04QI	\$203,516,123.33	\$1,293,155,138.40	\$107,467,744.40
04QII	\$222,419,460.00	\$1,295,824,223.60	\$107,608,659.60
04QIII	\$129,518,910.67	\$1,531,845,405.20	\$107,989,558.40
04QIV	\$210,264,566.00	\$1,343,505,273.60	\$101,530,292.40
05QI	\$218,207,766.00	\$1,325,170,900.52	\$108,207,344.40
05QII	\$210,740,268.00	\$1,356,736,303.20	\$114,469,008.80
05QIII	\$70,442,664.00	\$610,676,763.20	\$101,632,700.00
05QIV	\$96,804,192.67	\$519,343,930.40	\$167,359,222.00
06QI	\$170,229,904.00	\$980,308,611.20	\$131,038,566.80
06QII	\$141,040,084.00	\$1,123,254,188.80	\$119,203,338.00
06QIII	\$83,350,706.67	\$992,483,532.80	\$106,378,393.20
06QIV	\$138,706,648.67	\$1,102,909,788.40	\$94,538,215.60
07QI	\$169,895,678.67	\$1,202,983,886.80	\$86,412,713.20
07QII	\$139,270,046.67	\$1,139,023,416.80	\$104,211,559.60
07QIII	\$95,183,728.67	\$1,108,068,752.00	\$106,665,139.60
07QIV	\$155,881,593.33	\$1,200,308,569.20	\$96,343,428.40
08QI	\$201,404,423.33	\$1,186,200,293.60	\$88,024,735.20
08QII	\$179,107,758.00	\$1,379,005,640.00	\$48,679,872.40
08QIII	\$113,571,619.33	\$1,058,771,837.20	\$77,507,276.80
08QIV	\$138,238,614.00	\$1,172,213,614.00	\$71,970,269.20
09QI	\$163,544,039.33	\$1,190,418,232.40	\$70,776,817.20
09QII	\$154,209,418.00	\$1,216,958,291.20	\$74,333,526.80
09QIII	\$110,211,089.33	\$1,091,130,198.80	\$80,718,236.40
09QIV	\$167,628,419.33	\$1,238,545,421.20	\$64,770,927.20
10QI	\$191,359,694.00	\$1,225,549,136.40	\$76,101,740.00
10QII	\$210,925,688.67	\$1,318,136,350.40	\$80,761,874.80

U. S. ECONOMIC DATA: GDP AND EMPLOYMENT

Table 10

	GDP	REAL GDP	NON-FARM EMP.	CIV. EMP	UNEMP
90Q I	\$5,708.1	\$8,027.7	108,082	117,374	7,187
90Q II	\$5,797.4	\$8,059.6	110,118	119,296	6,679
90Q III	\$5,850.6	\$8,059.5	109,648	119,920	7,049
90Q IV	\$5,846.0	\$7,988.9	110,099	118,583	7,271
91Q I	\$5,880.2	\$7,950.2	107,457	116,073	8,968
91Q II	\$5,962.0	\$8,003.8	108,639	118,017	8,551
91Q III	\$6,033.7	\$8,037.5	108,280	118,860	8,500
91Q IV	\$6,092.5	\$8,069.0	109,122	117,924	8,494
92Q I	\$6,190.7	\$8,157.6	106,997	116,294	10,167
92Q II	\$6,295.2	\$8,244.3	108,959	118,665	9,630
92Q III	\$6,389.7	\$8,329.4	108,833	119,898	9,673
92Q IV	\$6,493.6	\$8,417.0	110,115	119,111	8,981
93Q I	\$6,544.5	\$8,432.5	108,568	117,674	9,880
93Q II	\$6,622.7	\$8,486.4	110,897	120,170	9,038
93Q III	\$6,688.3	\$8,531.1	111,140	121,681	8,727
93Q IV	\$6,813.8	\$8,643.8	112,770	121,512	8,116
94Q I	\$6,916.3	\$8,727.9	111,440	120,416	9,209
94Q II	\$7,044.3	\$8,847.3	114,304	122,805	7,995
94Q III	\$7,131.8	\$8,904.3	114,784	124,257	7,843
94Q IV	\$7,248.2	\$9,003.2	116,635	124,783	6,939
95Q I	\$7,307.7	\$9,025.3	115,245	123,294	7,755
95Q II	\$7,355.8	\$9,044.7	117,523	124,851	7,430
95Q III	\$7,452.5	\$9,120.7	117,485	125,882	7,505
95Q IV	\$7,542.5	\$9,184.3	118,937	125,571	6,927
96Q I	\$7,638.2	\$9,247.2	117,208	124,085	7,943
96Q II	\$7,800.0	\$9,407.1	119,863	126,495	7,222
96Q III	\$7,892.7	\$9,488.9	120,082	128,084	7,087
96Q IV	\$8,023.0	\$9,592.5	121,680	128,166	6,691
97Q I	\$8,137.0	\$9,666.2	120,134	127,132	7,660
97Q II	\$8,276.8	\$9,809.6	122,911	129,552	6,681
97Q III	\$8,409.9	\$9,932.7	123,083	130,729	6,659
97Q IV	\$8,505.7	\$10,008.9	124,977	130,818	5,955
98Q I	\$8,600.6	\$10,103.4	123,387	129,505	6,896
98Q II	\$8,698.6	\$10,194.3	126,100	131,492	5,980
98Q III	\$8,847.2	\$10,328.8	126,259	132,280	6,260
98Q IV	\$9,027.5	\$10,507.6	127,973	132,578	5,702
99Q I	\$9,148.6	\$10,601.2	126,355	131,759	6,429
99Q II	\$9,252.6	\$10,684.0	129,129	133,453	5,822
99Q III	\$9,405.1	\$10,819.9	129,333	134,206	5,935
99Q IV	\$9,607.7	\$11,014.3	131,156	134,534	5,332
00Q I	\$9,709.5	\$11,043.0	129,572	135,485	6,223
00Q II	\$9,949.1	\$11,258.5	132,335	137,176	5,544
00Q III	\$10,017.5	\$11,267.9	132,004	137,289	5,750
00Q IV	\$10,129.8	\$11,334.5	133,229	137,613	5,251

U. S. ECONOMIC DATA: GDP AND EMPLOYMENT

Table 10: (Continued)

	GDP	REAL GDP	NON-FARM EMP.	CIV. EMP	UNEMP
01QI	\$10,165.1	\$11,297.2	131,073	136,638	6,560
01QII	\$10,301.3	\$11,371.3	132,691	137,293	6,240
01QIII	\$10,305.2	\$11,340.1	131,724	137,294	6,880
01QIV	\$10,373.1	\$11,380.1	131,814	136,508	7,522
02QI	\$10,498.7	\$11,477.9	129,114	135,059	8,883
02QII	\$10,601.9	\$11,538.8	130,895	136,548	8,327
02QIII	\$10,701.7	\$11,596.4	130,187	137,389	8,251
02QIV*	\$10,766.9	\$11,598.8	131,168	136,945	8,049
03QI*	\$10,888.4	\$11,645.8	128,685	136,374	9,224
03QII*	\$11,008.1	\$11,738.7	130,417	137,820	8,883
03QIII	\$11,255.7	\$11,935.5	129,801	138,124	8,862
03QIV	\$11,416.5	\$12,042.8	131,093	138,625	8,128
04QI	\$11,597.2	\$12,127.6	129,120	137,333	8,916
04QII	\$11,778.4	\$12,213.8	131,894	139,050	8,082
04QIII	\$11,950.5	\$12,303.5	131,584	140,189	8,001
04QIV	\$12,144.9	\$12,410.3	133,142	140,435	7,598
05QI	\$12,379.5	\$12,534.1	131,201	139,180	8,326
05QII	\$12,516.8	\$12,587.5	134,011	141,662	7,497
05QIII	\$12,741.6	\$12,683.2	134,036	143,001	7,475
05QIV	\$12,915.6	\$12,748.7	135,564	143,075	7,064
06QI	\$13,183.5	\$12,915.9	133,905	142,082	7,518
06QII	\$13,347.8	\$12,962.5	136,482	144,221	6,933
06QIII	\$13,452.9	\$12,965.9	136,265	145,332	7,104
06QIV	\$13,611.5	\$13,060.7	137,693	146,073	6,446
07QI	\$13,789.5	\$13,089.3	135,709	144,692	7,321
07QII	\$14,008.2	\$13,194.1	138,130	146,040	6,771
07QIII	\$14,158.2	\$13,268.5	137,638	146,723	7,199
07QIV	\$14,291.3	\$13,363.5	138,917	146,732	7,020
08QI	\$14,328.4	\$13,339.2	136,380	144,755	8,067
08QII	\$14,471.8	\$13,359.0	137,919	146,166	8,099
08QIII	\$14,484.9	\$13,223.5	136,691	146,029	9,370
08QIV	\$14,191.2	\$12,993.7	136,172	144,501	10,161
09QI	\$14,049.7	\$12,832.6	131,348	140,125	13,534
09QII	\$14,034.5	\$12,810.0	131,511	140,592	14,105
09QIII	\$14,114.7	\$12,860.8	130,028	140,069	14,854
09QIV	\$14,277.3	\$13,019.0	130,763	138,724	14,565
10QI	\$14,446.4	\$13,138.8	128,219	137,332	15,939
10QII	\$14,597.7	\$13,216.5	130,894	139,560	14,621

**U.S. ECON. DATA: REAL GDP &
UE%**
Table11

	UNEMP%	RGDP%
90Q I	5.77%	4.2%
90Q II	5.30%	1.6%
90Q III	5.55%	0.0%
90Q IV	5.78%	-3.5%
91Q I	7.17%	-1.9%
91Q II	6.76%	2.7%
91Q III	6.67%	1.7%
91Q IV	6.72%	1.6%
92Q I	8.04%	4.5%
92Q II	7.51%	4.3%
92Q III	7.47%	4.2%
92Q IV	7.01%	4.3%
93Q I	7.75%	0.7%
93Q II	7.00%	2.6%
93Q III	6.69%	2.1%
93Q IV	6.26%	5.4%
94Q I	7.10%	4.0%
94Q II	6.11%	5.6%
94Q III	5.94%	2.6%
94Q IV	5.27%	4.5%
95Q I	5.92%	1.0%
95Q II	5.62%	0.9%
95Q III	5.63%	3.4%
95Q IV	5.23%	2.8%
96Q I	6.02%	2.8%
96Q II	5.40%	7.1%
96Q III	5.24%	3.5%
96Q IV	4.96%	4.4%
97Q I	5.68%	3.1%
97Q II	4.90%	6.1%
97Q III	4.85%	5.1%
97Q IV	4.35%	3.1%
98Q I	5.06%	3.8%
98Q II	4.35%	3.6%
98Q III	4.52%	5.4%
98Q IV	4.12%	7.1%
99Q I	4.65%	3.6%
99Q II	4.18%	3.2%
99Q III	4.24%	5.2%
99Q IV	3.81%	7.4%
00Q I	4.39%	1.1%
00Q II	3.88%	8.0%
00Q III	4.02%	0.3%
00Q IV	3.68%	2.4%

**U.S. ECON. DATA: REAL GDP &
UE%**

Table11: (Continued)

	UNEMP%	RGDP%
01QI	4.58%	-1.3%
01QII	4.35%	2.6%
01QIII	4.77%	-1.1%
01QIV	5.22%	1.4%
02QI	6.17%	3.5%
02QII	5.75%	2.1%
02QIII	5.67%	2.0%
02QIV*	5.55%	0.1%
03QI*	6.34%	1.6%
03QII*	6.06%	3.2%
03QIII	6.03%	6.9%
03QIV	5.54%	3.6%
04QI	6.10%	2.8%
04QII	5.49%	2.9%
04QIII	5.40%	3.0%
04QIV	5.13%	3.5%
05QI	5.64%	4.1%
05QII	5.03%	1.7%
05QIII	4.97%	3.1%
05QIV	4.70%	2.1%
06QI	5.03%	5.4%
06QII	4.59%	1.4%
06QIII	4.66%	0.1%
06QIV	4.23%	3.0%
07QI	4.82%	0.9%
07QII	4.43%	3.2%
07QIII	4.68%	2.3%
07QIV	4.57%	2.9%
08QI	5.28%	-0.7%
08QII	5.25%	0.6%
08QIII	6.03%	-4.0%
08QIV	6.57%	-6.8%
09QI	8.81%	-4.9%
09QII	9.12%	-0.7%
09QIII	9.59%	1.6%
09QIV	9.50%	5.0%
10QI	10.40%	3.7%
10QII	9.48%	2.4%