

1 SITE DEVELOPMENT PLAN
C2.1 SCALE: 1" = 20'-0"

ZONING CODE

ZONING CLASSIFICATION: S-B2 / S-RS (SUBURBAN PEDESTIAN ORIENTED CORRIDOR BUSINESS DISTRICT) ENORC OVERLAY, CT CORRIDOR OVERLAY (ZONING CHANGE PENDING TO S-B2)

PROPERTY AREA: (REFER SURVEY)
 PAVEMENT AREA: 18,818 SQ. FT.

PARKING SUMMARY
 PARKING FORMULA: 1 SP. PER 200 SQ. FT. GFA
 SPACE SIZE: 9' x 20'
 SPACES REQUIRED: 38
 SPACES PROVIDED: 41
 H.C. SPACES PROVIDED: 2

SYMBOLS LEGEND

- NOTE: REFER TO SURVEY FOR EXISTING CONDITIONS SYMBOLS LEGEND.
- NEW BUILDING CONSTRUCTION
 - AREA OF CONCRETE
 - AREA OF PAVING
 - NEW POLE SIGN LOCATION
 - NEW CONCRETE PAVING BLOCK
 - NEW LIGHT POLE LOCATION
 - NEW FENCE CONSTRUCTION

CAUTION:
 INFORMATION ON THIS DRAWING CONCERNING TYPE AND LOCATION OF UNDERGROUND AND OTHER UTILITIES IS NOT GUARANTEED TO BE ACCURATE OR ALL INCLUSIVE. THE CONTRACTOR IS RESPONSIBLE FOR MAKING HIS OWN DETERMINATION AS TO THE TYPE AND LOCATION OF UNDERGROUND AND OTHER UTILITIES AS MAY BE NECESSARY TO AVOID DAMAGE THERETO.



**Know what's below
 Call before you dig.**

SPECIAL NOTE:
 PRIOR TO CONTRACT CLOSEOUT, CONTRACTOR SHALL SECURE THE SERVICES OF A REGISTERED LAND SURVEYOR TO PROVIDE SITE SURVEY OF COMPLETED PROJECT CONDITIONS AND SUBMIT FOR REVIEW AND APPROVAL BY OWNER. REFER TO PROJECT MANUAL FOR ADDITIONAL REQUIREMENTS.

SPECIAL NOTE:
 POINT OF BEGINNING FOR SITE DEVELOPMENT LAYOUT PARALLEL AND PERPENDICULAR TO SOUTH PROPERTY LINE (S 90°00'00" E).

GENERAL NOTES

- A REFER TO PROJECT MANUAL FOR ADDITIONAL REQUIREMENTS. ALL ON SITE CONCRETE TO BE 4,000 PSI.
- B SITE DIMENSIONS TO FACE OF CONCRETE FOUNDATION, SIDEWALK, CURB GUTTER LINE, PROPERTY LINE, OR CENTER LINE OF STRIPING UNLESS OTHERWISE NOTED.
- C COORDINATE WORK WITH OTHER SITE RELATED DEVELOPMENT DRAWINGS.
- D REFER TO STRUCTURAL DRAWINGS FOR BUILDING DIMENSIONS AND LAYOUT OF SIDEWALKS ADJACENT TO BUILDING PERIMETER.
- E PRIOR TO INSTALLATION, CONTRACTOR TO VERIFY LOCATIONS OF LIGHT POLES, LANDSCAPING, AND UTILITIES DO NOT CONFLICT WITH SITE SIGN LOCATION SHOWN. IF CONFLICT IS DISCOVERED, CONTRACTOR TO NOTIFY OWNER'S REPRESENTATIVE PRIOR TO PROCEEDING WITH THE WORK.
- F FOR BUILDING FRONT SIDEWALK GENERAL DEVELOPMENT LAYOUT CONCEPT, REFER TO DETAIL 12/C2.2.

KEY NOTES

- A2 1 CONCRETE PAVING (STANDARD DUTY) AT HANDICAP PARKING AREAS. REFER TO DETAIL 1/C2.2.
- 2 CONCRETE PAVING (HEAVY DUTY) AT DRIVE AREAS, DRIVE APRONS, FIRE LANES, AND REFUSE AREA. REFER TO DETAIL 2/C2.2.
- 3 CONCRETE CURB. REFER TO DETAIL 3/C2.2.
- 4 CONCRETE SIDEWALK CURB. REFER TO DETAIL 4/C2.2. REFER TO STRUCTURAL DRAWINGS FOR LAYOUT OF CONTROL AND EXPANSION JOINTS ADJACENT TO BUILDING PERIMETER.
- 5 CONCRETE SIDEWALK. REFER TO DETAIL 5/C2.2 AND STRUCTURAL DRAWINGS FOR LAYOUT ADJACENT TO BUILDING PERIMETER.
- 6 ACCESSIBLE PARKING SYMBOL PAVEMENT STRIPPING. REFER TO DETAIL 6/C2.2.
- 7 STEEL BOLLARD. REFER TO DETAIL 7/C2.2. PROVIDE (2) AT REFUSE CONTAINER AREA, (2) AT SECTIONAL OVERHEAD FREIGHT DOOR, AND (9) AT FRONT ENTRY. REFER TO STRUCTURAL DRAWINGS FOR LAYOUT OF BOLLARDS ADJACENT TO BUILDING PERIMETER.
- 8 ACCESSIBLE PARKING SIGN. REFER TO DETAIL 8/C2.2.
- 9 ACCESSIBLE AISLE TRANSITION. REFER TO DETAIL 9/C2.2.
- 10 ACCESSIBLE CONCRETE CURB RAMP TO BE INSTALLED PER CITY AND / OR STATE DESIGN STANDARDS. IF NO STANDARDS PROVIDE CONCRETE CONSTRUCTION PER DETAIL 10/C2.2.
- 11 ACCESSIBLE PARKING SPACE WITH ACCESS AISLE (ADA COMPLIANT) TO SLOPE 2% MAXIMUM IN ALL DIRECTIONS. PROVIDE PAVEMENT MARKINGS TO MATCH STRIPING COLOR UNLESS OTHERWISE REQUIRED TO COMPLY WITH GOVERNING ACCESSIBILITY REGULATIONS.
- 12 REFUSE ENCLOSURE. REFER TO 1/C2.3.
- 13 CONCRETE BUMPER BLOCK (8" W X 5" H X 6'-0" LONG) ANCHORED TO PAVING WITH (2) 1"-6" LONG #4 REBAR.
- 14 PARKING LOT LIGHTING. REFER TO SITE UTILITY PLAN FOR TYPE AND CONSTRUCTION.
- 15 4" WIDE PAVEMENT STRIPING AS SHOWN USING HIGHWAY MARKING PAINT - YELLOW (2 COATS).
- 16 SITE SIGN. REFER TO SHEET SG1.1 FOR TYPE, CONSTRUCTION AND LOCATION. SIGN OWNER FURNISHED AND INSTALLED (REFER TO SCOPE OF WORK SCHEDULE). REFER TO SITE UTILITY PLAN FOR ADDITIONAL REQUIREMENTS.
- 17 CONCRETE DRIVE APRON TO BE INSTALLED PER CITY AND / OR STATE DESIGN STANDARDS. IF NO STANDARDS PROVIDE CONCRETE CONSTRUCTION PER DETAIL 2/C2.2.
- 18 LIMITS OF NEW PAVING. MATCH EXISTING PAVEMENT TRANSITION ELEVATIONS. AT TRANSITIONS OF NEW CONCRETE TO EXISTING CONCRETE PAVEMENT, EPOXY DOWEL 6" MINIMUM INTO EXISTING WITH #4 X 1'-6" SMOOTH DOWELS MATCHING NEW PAVEMENT REINFORCEMENT SPACING. PROVIDE SEALANT AT JOINTS.
- 19 ROLL DOWN CURB END TRANSITION SLOPING 1:2.
- 20 CONCRETE CURB IN RIGHT-OF-WAY TO MATCH EXISTING PER CITY AND / OR STATE DESIGN STANDARDS.
- 21 CURB OPENING. REFER TO SITE GRADING PLAN FOR ADDITIONAL REQUIREMENTS.
- 22 CONCRETE SIDEWALK IN RIGHT-OF-WAY TO BE INSTALLED PER CITY AND / OR STATE DESIGN STANDARDS. IF NO STANDARDS PROVIDE CONCRETE CONSTRUCTION PER DETAIL 5/C2.2.
- 23 3' WIDE MINIMUM DESIGNATED ACCESSIBLE ROUTE. SLOPE 5% MAXIMUM IN DIRECTION OF TRAVEL WITH 2% MAXIMUM CROSS SLOPE. PROVIDE PAVEMENT STRIPING AS INDICATED.
- A2 24 PERVIOUS PAVEMENT - THE CONTRACTOR SHALL PROVIDE A PERVIOUS PAVEMENT DESIGN (MIN. 24" AGGREGATE BASE) BY AN EXPERIENCED QUALIFIED NEW ORLEANS, LA PERVIOUS PAVING CONTRACTOR CONFORMING TO THE AUGUST 22, 2019 AMENDED NEW ORLEANS CITY CODE 26-15 AND 26-482 SPECIFICALLY RELATED TO PAVEMENT SYSTEMS AND STORMWATER REQUIREMENTS PER THE AMENDMENT SPECIFICATIONS.
- 25 ACCESSIBLE CONCRETE CURB RAMP TO BE INSTALLED PER CITY AND / OR STATE DESIGN STANDARDS. IF NO STANDARDS PROVIDE CONCRETE CONSTRUCTION PER DETAIL 13/C2.2.
- 26 CONCRETE DOOR PAD. REFER TO DETAIL 5/C2.2 AND ARCHITECTURAL DRAWINGS FOR DOOR OPENING LOCATIONS. CONCRETE PAD AT DOOR OPENINGS TO BE FLUSH WITH FINISH FLOOR AND SLOPE 2% MAXIMUM AWAY FROM BUILDING.
- 27 CONCRETE LADDER PAD. REFER TO DETAIL 5/C2.2 AND ARCHITECTURAL DRAWINGS FOR EXACT LOCATION (SLOPE 2% MAXIMUM AWAY FROM BUILDING).
- 28 FIRE LANE TO BE INSTALLED PER FIRE MARSHAL DESIGN STANDARDS. IF NO STANDARDS, PROVIDE 4" RED STRIPING AND CURB PAINT AROUND DRIVEWAYS AND PARKING ACCESS AISLE PERIMETER WITH 8" WHITE HELVETICA LETTERS STATING "NO PARKING - FIRE LANE" AT LOCATIONS INDICATED.
- 29 ORNAMENTAL FENCING. REFER TO LANDSCAPE PLAN SHEET L.1.1 FOR ADDITIONAL INFORMATION.

INDIVIDUAL ARCHITECTURAL REGISTRATION NO.: 3187
 FIRM ARCHITECTURAL REGISTRATION NO.: AF0046

PRELIMINARY
 NOT FOR
 CONSTRUCTION
 OR PERMIT

SHEETS BEARING THIS SEAL ARE AUTHENTICATED. RESPONSIBILITY FOR ALL OTHER PLANS, SPECIFICATIONS OR INSTRUMENTS ARE DISCLAIMED.

O'Reilly AUTO PARTS
 CORPORATE OFFICES
 535 SOUTH PATTERSON
 SPRINGFIELD, MISSOURI 65802
 (417) 882-2874 TELEPHONE

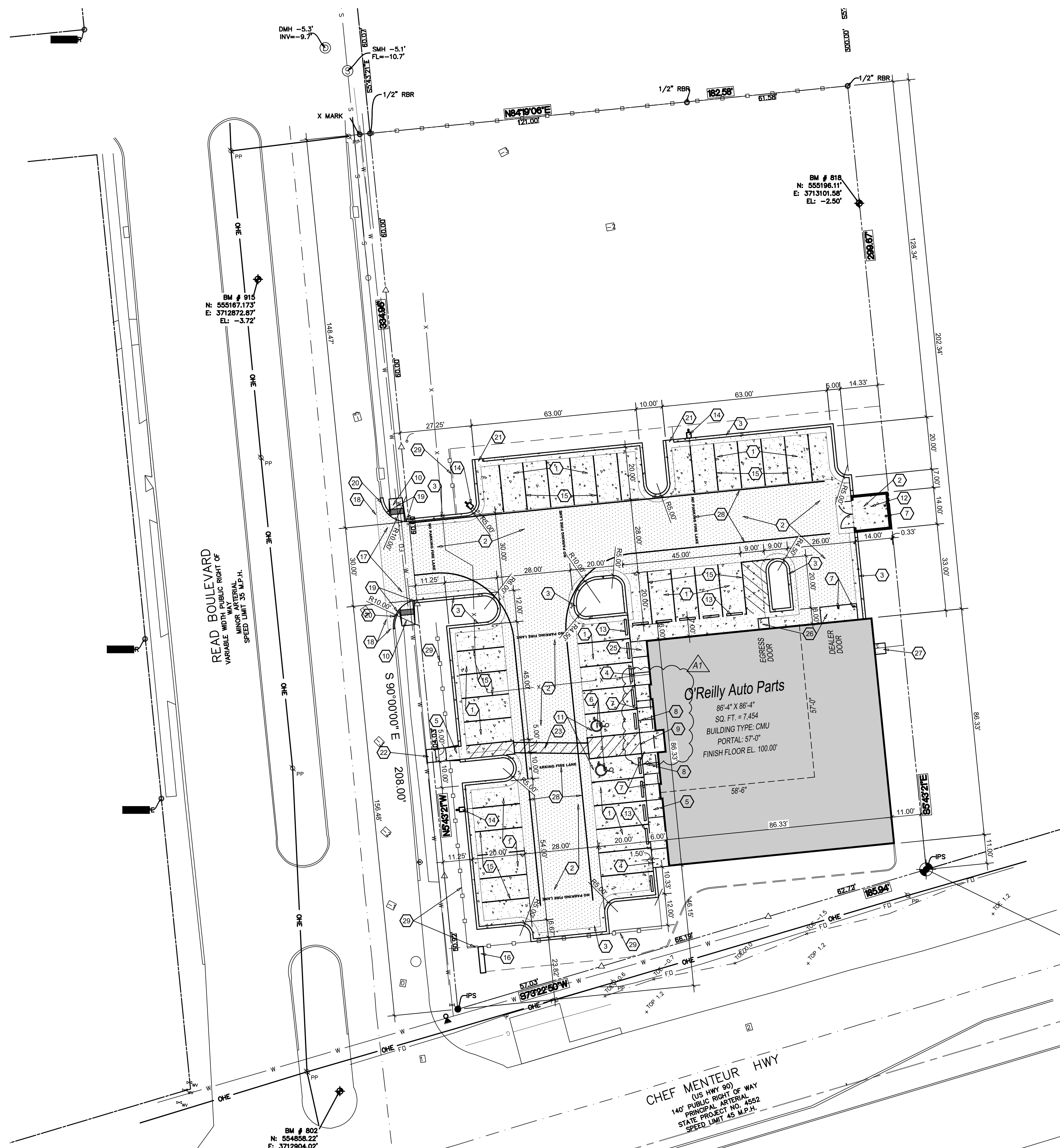
PROJECT:
NEW O'REILLY AUTO PARTS STORE
4523 READ BOULEVARD
NEW ORLEANS, LA 70127
SITE DEVELOPMENT PLAN

Buddy Webb & Company, Inc.
Architect - Consultant
 3057 EAST CAIRO
 SPRINGFIELD, MISSOURI 65802
 (417) 877-1385 TELEPHONE
 (417) 877-9736 FAX

DRAWN BY: **AJP** CHECKED BY: **SB**
 DATE: **03/25/24**
 REVISION: **A2 06/12/24**
 PROJECT NUMBER: **NO1**
 SHEET NUMBER

C2.1

DESIGNS, DRAWINGS AND SPECIFICATIONS ARE INSTRUMENTS OF SERVICE AND ARE THE PROPERTY OF THE DESIGN PROFESSIONAL. REPRODUCTION PROHIBITED WITHOUT THE EXPRESSED WRITTEN CONSENT OF THE DESIGN PROFESSIONAL. © COPYRIGHT 2024



1 SITE DEVELOPMENT PLAN
C2.1 SCALE: 1" = 20'-0"

ZONING CODE

ZONING CLASSIFICATION: S-B2 / S-RS (SUBURBAN PEDESTIAN ORIENTED CORRIDOR BUSINESS DISTRICT) ENORC OVERLAY, CT CORRIDOR OVERLAY (ZONING CHANGE PENDING TO S-B2)

PROPERTY AREA: (REFER SURVEY)
 PAVEMENT AREA: 18,818 SQ. FT.

PARKING SUMMARY
 PARKING FORMULA: 1 SP. PER 500 SQ. FT. GFA
 SPACE SIZE: 9' x 20'
 SPACES REQUIRED: 15
 SPACES PROVIDED: 41
 H.C. SPACES PROVIDED: 2

SYMBOLS LEGEND

- NOTE: REFER TO SURVEY FOR EXISTING CONDITIONS SYMBOLS LEGEND.
- NEW BUILDING CONSTRUCTION
 - AREA OF CONCRETE
 - AREA OF PAVING
 - NEW POLE SIGN LOCATION
 - NEW CONCRETE PAVING BLOCK
 - NEW LIGHT POLE LOCATION
 - NEW FENCE CONSTRUCTION

CAUTION:
 INFORMATION ON THIS DRAWING CONCERNING TYPE AND LOCATION OF UNDERGROUND AND OTHER UTILITIES IS NOT GUARANTEED TO BE ACCURATE OR ALL INCLUSIVE. THE CONTRACTOR IS RESPONSIBLE FOR MAKING HIS OWN DETERMINATION AS TO THE TYPE AND LOCATION OF UNDERGROUND AND OTHER UTILITIES AS MAY BE NECESSARY TO AVOID DAMAGE THERETO.



**Know what's below
 Call before you dig.**

SPECIAL NOTE:
 PRIOR TO CONTRACT CLOSEOUT, CONTRACTOR SHALL SECURE THE SERVICES OF A REGISTERED LAND SURVEYOR TO PROVIDE SITE SURVEY OF COMPLETED PROJECT CONDITIONS AND SUBMIT FOR REVIEW AND APPROVAL BY OWNER. REFER TO PROJECT MANUAL FOR ADDITIONAL REQUIREMENTS.

SPECIAL NOTE:
 POINT OF BEGINNING FOR SITE DEVELOPMENT LAYOUT PARALLEL AND PERPENDICULAR TO SOUTH PROPERTY LINE (S 90°00'00" E).

GENERAL NOTES

- (A) REFER TO PROJECT MANUAL FOR ADDITIONAL REQUIREMENTS. ALL ON SITE CONCRETE TO BE 4,000 PSI.
- (B) SITE DIMENSIONS TO FACE OF CONCRETE FOUNDATION, SIDEWALK, CURB GUTTER LINE, PROPERTY LINE, OR CENTER LINE OF STRIPING UNLESS OTHERWISE NOTED.
- (C) COORDINATE WORK WITH OTHER SITE RELATED DEVELOPMENT DRAWINGS.
- (D) REFER TO STRUCTURAL DRAWINGS FOR BUILDING DIMENSIONS AND LAYOUT OF SIDEWALKS ADJACENT TO BUILDING PERIMETER.
- (E) PRIOR TO INSTALLATION, CONTRACTOR TO VERIFY LOCATIONS OF LIGHT POLES, LANDSCAPING, AND UTILITIES DO NOT CONFLICT WITH SITE SIGN LOCATION SHOWN. IF CONFLICT IS DISCOVERED, CONTRACTOR TO NOTIFY OWNER'S REPRESENTATIVE PRIOR TO PROCEEDING WITH THE WORK.
- (F) FOR BUILDING FRONT SIDEWALK GENERAL DEVELOPMENT LAYOUT CONCEPT, REFER TO DETAIL 12/C2.2.

KEY NOTES

- (1) CONCRETE PAVING (STANDARD DUTY) AT PARKING AREAS, REFER TO DETAIL 1/C2.2.
- (2) CONCRETE PAVING (HEAVY DUTY) AT DRIVE AREAS, DRIVE APRONS, FIRE LANES, AND REFUSE AREA, REFER TO DETAIL 2/C2.2.
- (3) CONCRETE CURB, REFER TO DETAIL 3/C2.2.
- (4) CONCRETE SIDEWALK CURB, REFER TO DETAIL 4/C2.2. REFER TO STRUCTURAL DRAWINGS FOR LAYOUT OF CONTROL AND EXPANSION JOINTS ADJACENT TO BUILDING PERIMETER.
- (5) CONCRETE SIDEWALK, REFER TO DETAIL 5/C2.2 AND STRUCTURAL DRAWINGS FOR LAYOUT ADJACENT TO BUILDING PERIMETER.
- (6) ACCESSIBLE PARKING SYMBOL PAVEMENT STRIPPING, REFER TO DETAIL 6/C2.2.
- (7) STEEL BOLLARD, REFER TO DETAIL 7/C2.2. PROVIDE (2) AT REFUSE CONTAINER AREA, (2) AT SECTIONAL OVERHEAD FREIGHT DOOR, AND (9) AT FRONT ENTRY. REFER TO STRUCTURAL DRAWINGS FOR LAYOUT OF BOLLARDS ADJACENT TO BUILDING PERIMETER.
- (8) ACCESSIBLE PARKING SIGN, REFER TO DETAIL 8/C2.2.
- (9) ACCESSIBLE AISLE TRANSITION, REFER TO DETAIL 9/C2.2.
- (10) ACCESSIBLE CONCRETE CURB RAMP TO BE INSTALLED PER CITY AND / OR STATE DESIGN STANDARDS. IF NO STANDARDS PROVIDE CONCRETE CONSTRUCTION PER DETAIL 10/C2.2.
- (11) ACCESSIBLE PARKING SPACE WITH ACCESS AISLE (ADA COMPLIANT) TO SLOPE 2% MAXIMUM IN ALL DIRECTIONS. PROVIDE PAVEMENT MARKINGS TO MATCH STRIPING COLOR UNLESS OTHERWISE REQUIRED TO COMPLY WITH GOVERNING ACCESSIBILITY REGULATIONS.
- (12) REFUSE ENCLOSURE, REFER TO 1/C2.3.
- (13) CONCRETE BUMPER BLOCK (8" W X 5" H X 6'-0" LONG) ANCHORED TO PAVING WITH (2) 1"-6" LONG #4 REBAR.
- (14) PARKING LOT LIGHTING, REFER TO SITE UTILITY PLAN FOR TYPE AND CONSTRUCTION.
- (15) 4" WIDE PAVEMENT STRIPING AS SHOWN USING HIGHWAY MARKING PAINT - YELLOW (2 COATS).
- (16) SITE SIGN, REFER TO SHEET SG1.1 FOR TYPE, CONSTRUCTION AND LOCATION. SIGN OWNER FURNISHED AND INSTALLED (REFER TO SCOPE OF WORK SCHEDULE). REFER TO SITE UTILITY PLAN FOR ADDITIONAL REQUIREMENTS.
- (17) CONCRETE DRIVE APRON TO BE INSTALLED PER CITY AND / OR STATE DESIGN STANDARDS. IF NO STANDARDS PROVIDE CONCRETE CONSTRUCTION PER DETAIL 2/C2.2.
- (18) LIMITS OF NEW PAVING. MATCH EXISTING PAVEMENT TRANSITION ELEVATIONS. AT TRANSITIONS OF NEW CONCRETE TO EXISTING CONCRETE PAVEMENT, EPOXY DOWEL 6" MINIMUM INTO EXISTING WITH #4 X 1'-6" SMOOTH DOWELS MATCHING NEW PAVEMENT REINFORCEMENT SPACING. PROVIDE SEALANT AT JOINTS.
- (19) ROLL DOWN CURB END TRANSITION SLOPING 1:2.
- (20) CONCRETE CURB IN RIGHT-OF-WAY TO MATCH EXISTING PER CITY AND / OR STATE DESIGN STANDARDS.
- (21) CURB OPENING, REFER TO SITE GRADING PLAN FOR ADDITIONAL REQUIREMENTS.
- (22) CONCRETE SIDEWALK IN RIGHT-OF-WAY TO BE INSTALLED PER CITY AND / OR STATE DESIGN STANDARDS. IF NO STANDARDS PROVIDE CONCRETE CONSTRUCTION PER DETAIL 5/C2.2.
- (23) 3' WIDE MINIMUM DESIGNATED ACCESSIBLE ROUTE. SLOPE 5% MAXIMUM IN DIRECTION OF TRAVEL WITH 2% MAXIMUM CROSS SLOPE. PROVIDE PAVEMENT STRIPING AS INDICATED.
- (24) NOT USED.
- (25) ACCESSIBLE CONCRETE CURB RAMP TO BE INSTALLED PER CITY AND / OR STATE DESIGN STANDARDS. IF NO STANDARDS PROVIDE CONCRETE CONSTRUCTION PER DETAIL 13/C2.2.
- (26) CONCRETE DOOR PAD, REFER TO DETAIL 5/C2.2 AND ARCHITECTURAL DRAWINGS FOR DOOR OPENING LOCATIONS. CONCRETE PAD AT DOOR OPENINGS TO BE FLUSH WITH FINISH FLOOR AND SLOPE 2% MAXIMUM AWAY FROM BUILDING.
- (27) CONCRETE LADDER PAD, REFER TO DETAIL 5/C2.2 AND ARCHITECTURAL DRAWINGS FOR EXACT LOCATION (SLOPE 2% MAXIMUM AWAY FROM BUILDING).
- (28) FIRE LANE TO BE INSTALLED PER FIRE MARSHAL DESIGN STANDARDS. IF NO STANDARDS, PROVIDE 4" RED STRIPING AND CURB PAINT AROUND DRIVEWAYS AND PARKING ACCESS AISLE PERIMETER WITH 8" WHITE HELVETICA LETTERS STATING "NO PARKING - FIRE LANE" AT LOCATIONS INDICATED.
- (29) ORNAMENTAL FENCING, REFER TO LANDSCAPE PLAN SHEET L1.1 FOR ADDITIONAL INFORMATION.



O'Reilly AUTO PARTS
 CORPORATE OFFICES
 535 SOUTH PATTERSON
 NEW ORLEANS, LA 70127
 (417) 882-2874 TELEPHONE

PROJECT:
NEW O'REILLY AUTO PARTS STORE
4523 READ BOULEVARD
NEW ORLEANS, LA 70127

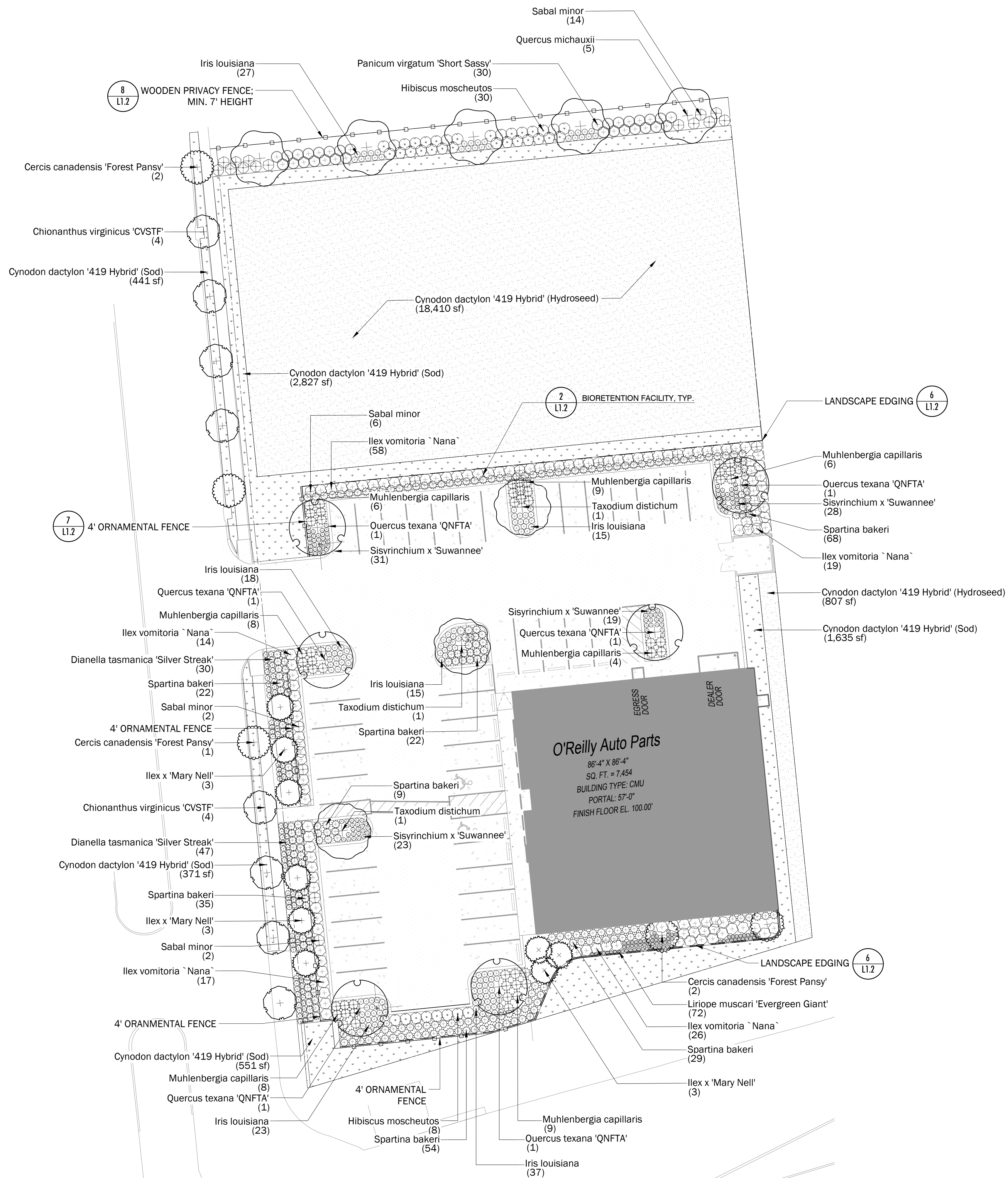
SITE DEVELOPMENT PLAN

Buddy Webb & Company, Inc.
Architect - Consultant
 3057 EAST CAIRO
 SPRINGFIELD, MISSOURI 65802
 (417) 877-1385 TELEPHONE
 (417) 877-9736 FAX

DRAWN BY: **AJP** CHECKED BY: **SB**
 DATE: **03/25/24**
 REVISION: **04/09/24**
 PROJECT NUMBER: **NO1**
 SHEET NUMBER

C2.1

© COPYRIGHT 2024 - DESIGNS, DRAWINGS AND SPECIFICATIONS ARE INSTRUMENTS OF SERVICE AND ARE THE PROPERTY OF THE DESIGN PROFESSIONAL. REPRODUCTION PROHIBITED WITHOUT THE EXPRESSED WRITTEN CONSENT OF THE DESIGN PROFESSIONAL.



1 LANDSCAPE PLAN
 L1.1 SCALE: 1" = 20'-0"



PLANT SCHEDULE OREILLYS

SYMBOL	QTY	BOTANICAL NAME	COMMON NAME	CAL	CONT	HT	REMARKS
TREES							
(Symbol)	5	Cercis canadensis 'Forest Pansy'	Forest Pansy Eastern Redbud	2.5" Cal.		12' Min. Ht	6.5' min. clear trunk
(Symbol)	8	Chionanthus virginicus 'CVSTF'	Prodigy® White Fringetree	3" Cal.		12' Min. Ht	6.5' min. clear trunk
(Symbol)	9	Ilex x 'Mary Nell'	Mary Nell Holly	2.5" Cal.		8' Min. Ht	
(Symbol)	5	Quercus michauxii	Swamp Chestnut Oak	2.5" Cal.			
(Symbol)	6	Quercus texana 'QNFTA'	Highpoint® Nuttall Oak	2.5" Cal.			6' min. clear trunk
(Symbol)	3	Taxodium distichum	Bald Cypress	2.5" Cal.			6' min. clear trunk
SYMBOL	QTY	BOTANICAL NAME	COMMON NAME	SIZE	CONT	REMARKS	
SHRUBS							
(Symbol)	77	Dianella tasmanica 'Silver Streak'	Silver Streak Flax Lily	1 gal.	Pot		18" min. ht.
(Symbol)	38	Hibiscus moscheutos	Rose Mallow	3 gal.	Pot		24" min. ht.
(Symbol)	115	Ilex vomitoria 'Nana'	Dwarf Yaupon Holly	3 gal.	Pot		24" min. ht
(Symbol)	135	Iris louisiana	Louisiana Iris	1 gal.	Pot		18" min. ht.
(Symbol)	72	Liriope muscari 'Evergreen Giant'	Evergreen Giant Lilyturf	1 gal.	Pot		
(Symbol)	50	Muhlenbergia capillaris	Pink Muhly Grass	3 gal.	Pot		24" min. ht.
(Symbol)	30	Panicum virgatum 'Short Sassy'	Short Sassy Switch Grass	3 gal.	Pot		24" min. ht.
(Symbol)	24	Sabal minor	Dwarf Palmetto	3 gal.	Pot		36" min. ht.
(Symbol)	101	Sisyrrinchium x 'Suwannee'	Suwannee Blue-eyed Grass	1 gal.	Pot		
(Symbol)	238	Spartina bakeri	Sand Cordgrass	3 gal.	Pot		24" min. ht.
GROUND COVERS							
(Symbol)	19,217 sf	Cynodon dactylon '419 Hybrid' (Hydroseed)	Bermudagrass	hydroseed			
(Symbol)	5,825 sf	Cynodon dactylon '419 Hybrid' (Sod)	Bermudagrass	sod			

- NOTES:**
- REFER TO PROJECT MANUAL FOR ADDITIONAL REQUIREMENTS.
 - SITE CONDITIONS BASED UPON SURVEY PROVIDED BY OWNER. CONTRACTOR TO FIELD VERIFY EXISTING CONDITIONS BY DETAILED INSPECTION PRIOR TO SUBMITTING BID AND BEGINNING CONSTRUCTION. NOTIFY ARCHITECT IF EXISTING CONDITIONS DEVIATE SUBSTANTIALLY FROM THOSE INDICATED HEREIN.
 - REFER TO CIVIL DRAWINGS FOR ADDITIONAL GRADING REQUIREMENTS. COORDINATE WORK WITH OTHER SITE RELATED DEVELOPMENT DRAWINGS.
 - ALL PLANTING TYPES SHALL COMPLY WITH LOCAL GOVERNING CODES AND REGULATIONS. CONFORM TO REQUIREMENTS OF PLANT LIST AND TO THE AMERICAN ASSOCIATION OF NURSERYMEN "AMERICAN STANDARD OF NURSERY STOCK" AND "HORTICULTURAL STANDARDS" AS TO SPECIES, AGE, SIZE, AND PLANTING RECOMMENDATIONS.
 - NO MATERIAL SUBSTITUTIONS SHALL BE MADE WITHOUT THE LANDSCAPE ARCHITECT'S PRIOR WRITTEN APPROVAL. ALTERNATE MATERIALS OF SIMILAR SIZE AND CHARACTER MAY BE CONSIDERED IF SPECIFIED PLANT MATERIALS CANNOT BE OBTAINED.
 - PLANT LOCATIONS ARE APPROXIMATE. ADJUST AS NECESSARY TO AVOID CONFLICTS.
 - PROVIDE 4" TOPSOIL AT ALL SOD, SEED AND PLANTING AREAS. GRADE SHALL BE ADJUSTED FOR SOD THICKNESS. REFER TO CIVIL SITE GRADING PLAN FOR SLOPE REQUIREMENTS.
 - WHEN CLAY SOIL IS ENCOUNTERED IN THE ESTABLISHED AREA OF THE LAWN OR THE INSTALLATION OF PLANT MATERIAL IT SHALL BE IMPROVED IN ACCORDANCE WITH STANDARD TRADE PRACTICE.
 - RE-ESTABLISH TURF IN AREAS DISTURBED BY GRADING OR UTILITY TRENCHING IN THE RIGHT-OF-WAY.
 - PRIOR TO INSTALLATION, GENERAL CONTRACTOR TO CONFIRM THAT LIGHT POLES, LANDSCAPING AND UTILITIES DO NOT CONFLICT WITH SIGN LOCATION SHOWN. IF ANY POTENTIAL CONFLICT IS DISCOVERED, GENERAL CONTRACTOR IS TO CONTACT OWNER'S REPRESENTATIVE BEFORE PROCEEDING WITH THE WORK.
 - PLANT COUNTS AND MEASUREMENTS ARE GIVEN AS A COURTESY. CONTRACTOR IS RESPONSIBLE FOR VERIFYING PLANT COUNTS AND MEASUREMENTS FROM THE DRAWING.

INDIVIDUAL ARCHITECTURAL REGISTRATION NO.: 51187 FIRM ARCHITECTURAL REGISTRATION NO.: AF0046



THESE SHEETS BEARING THIS SEAL ARE AUTHENTICATED. RESPONSIBILITY FOR ALL OTHER PLANS, SPECIFICATIONS OR INSTRUMENTS ARE DISCLAIMED.

O'Reilly AUTO PARTS
 CORPORATE OFFICES
 535 SOUTH PATTERSON
 NEW ORLEANS, LA 70127
 (417) 882-2874 TELEPHONE

PROJECT:
NEW O'REILLY AUTO PARTS STORE
4523 READ BOULEVARD
NEW ORLEANS, LA 70127

LANDSCAPE PLAN

Buddy Webb & Company, Inc.
Architect - Consultant
 3057 EAST CAIRO
 SPRINGFIELD, MISSOURI 65802
 (417) 877-1385 TELEPHONE
 (417) 877-9736 FAX

DRAWN BY: **CJW** CHECKED BY: **CA**
 DATE: **03/14/24**
 REVISION:
 PROJECT NUMBER: **NO1**
 SHEET NUMBER: **L1.1**

L1.1

© COPYRIGHT 2024 - DESIGNS, DRAWINGS AND SPECIFICATIONS ARE INSTRUMENTS OF SERVICE AND ARE THE PROPERTY OF THE DESIGN PROFESSIONAL. REPRODUCTION PROHIBITED WITHOUT THE EXPRESSED WRITTEN CONSENT OF THE DESIGN PROFESSIONAL.



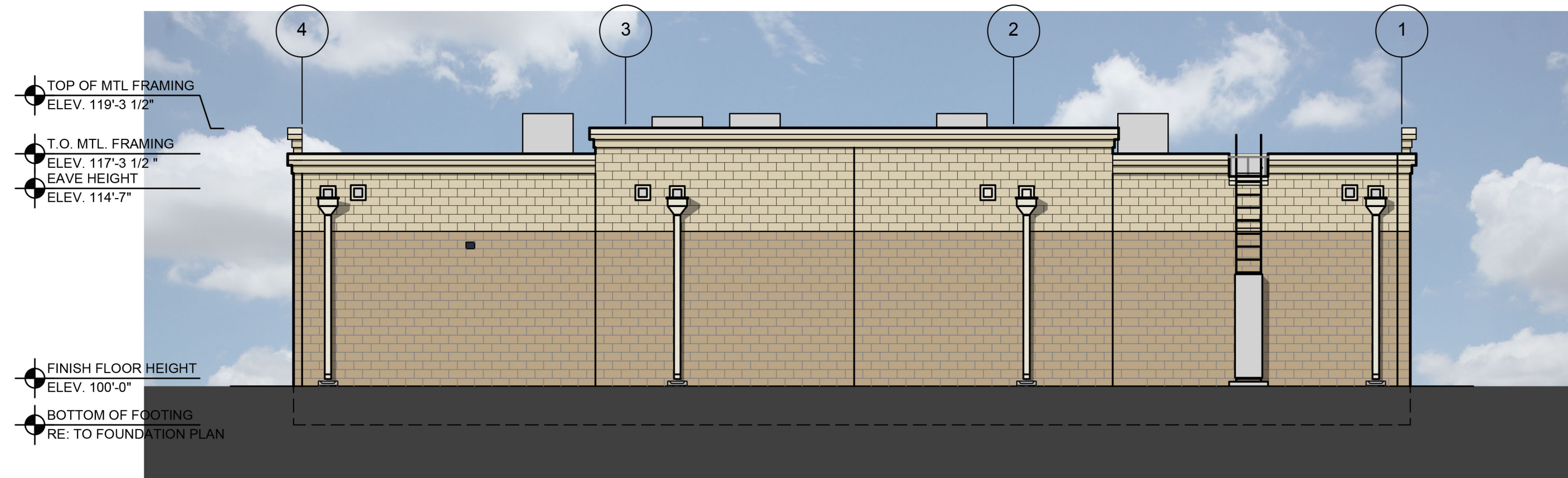
1 FRONT EXTERIOR ELEVATION

A2.1 SCALE: 1/8" = 1'-0"



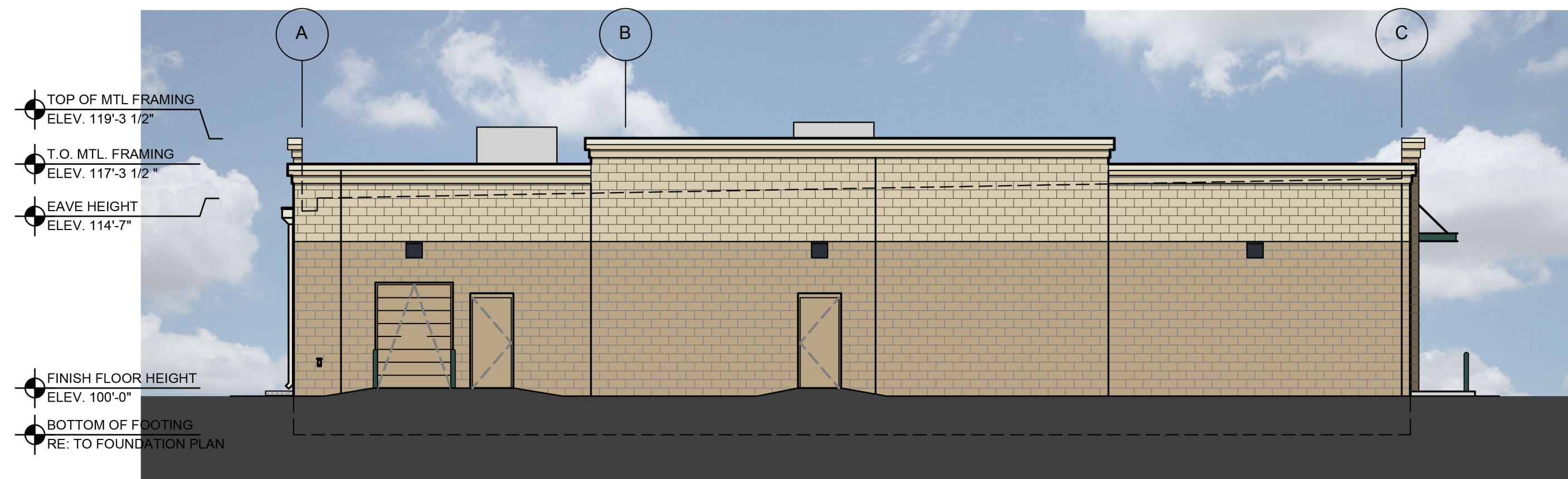
2 RIGHT EXTERIOR ELEVATION

A2.1 SCALE: 1/8" = 1'-0"



3 REAR EXTERIOR ELEVATION

A2.1 SCALE: 1/8" = 1'-0"



4 LEFT EXTERIOR ELEVATION

A2.1 SCALE: 1/8" = 1'-0"

GENERAL NOTES

- (A) REFER TO PROJECT MANUAL FOR ADDITIONAL REQUIREMENTS.
- (B) REFER TO CIVIL DRAWINGS FOR ADDITIONAL REQUIREMENTS.
- (C) REFER TO PLUMBING, MECHANICAL, AND ELECTRICAL DRAWINGS FOR SYSTEM TYPES AND ADDITIONAL REQUIREMENTS.
- (D) REFER TO EXTERIOR FINISH SCHEDULE FOR MATERIAL TYPES.
- (E) REFER TO PRE-ENGINEERED METAL BUILDING SHOP DRAWINGS FOR ADDITIONAL REQUIREMENTS.
- (F) REFER TO SCOPE OF WORK SCHEDULE FOR ADDITIONAL REQUIREMENTS.

EXTERIOR FINISH SCHEDULE

EXTERIOR INSULATION AND FINISH SYSTEM (EIFS)

KEY NOTE NO. 1A:
MFG: DRYVIT SPECIFIED. EQUAL BY STO OR MASTER BUILDERS (NO SUBSTITUTES)
SERIES: QUTSULATION PLUS MD
TEXTURE: SANDBLAST
COLOR: DRYVIT "ORAP011030S" STRATOTONE HIGH PERFORMANCE
COLOR STANDARD: SHERWIN WILLIAMS "POSITIVE RED" SW6871 (SHER-CRYL) GLOSS

KEY NOTE NO. 1B:
MFG: DRYVIT SPECIFIED. EQUAL BY STO OR MASTER BUILDERS (NO SUBSTITUTES)
SERIES: QUTSULATION PLUS MD
TEXTURE: SANDBLAST
COLOR: DRYVIT "ORAP011030S" STRATOTONE HIGH PERFORMANCE
COLOR STANDARD: SHERWIN WILLIAMS "SOFTER TAN" SW6141 (SHER-CRYL) GLOSS

UNIT MASONRY
KEY NOTE NO. 2A:
TYPE: CONCRETE MASONRY UNIT (CMU)
MFG: (REFER TO PROJECT MANUAL)
SIZE: 8"x8"x16" (NOM.)
TEXTURE: SMOOTH FACE
COURSING: RUNNING BOND
FINISH: FIELD PAINT (ACCENT COLOR)
COLOR: SHERWIN WILLIAMS "SOFTER TAN" SW6141 (SATIN)
NOTE: REFER TO "CONCRETE MASONRY UNIT SPECIAL SCHEDULE OF TREATMENTS" FOR ADDITIONAL REQUIREMENTS.

KEY NOTE NO. 2B:
TYPE: CONCRETE MASONRY UNIT (CMU)
MFG: (REFER TO PROJECT MANUAL)
SIZE: 8"x8"x16" (NOM.)
TEXTURE: SPLIT FACE
COURSING: RUNNING BOND
FINISH: FIELD PAINT (FIELD COLOR)
COLOR: SHERWIN WILLIAMS "LATTE" SW6108 (SATIN)
NOTE: REFER TO "CONCRETE MASONRY UNIT SPECIAL SCHEDULE OF TREATMENTS" FOR ADDITIONAL REQUIREMENTS.

FLASHING AND SHEET METAL

KEY NOTE NO. 3:
TYPE: STANDING SEAM ROOFING SYSTEM
MFG: (REFER TO PRE-ENGINEERED METAL BUILDING SHOP DRAWINGS)
COLOR: GALVALUME

KEY NOTE NO. 4:
TYPE: CAP FLASHING AT MASONRY
MFG: (REFER TO PRE-ENGINEERED METAL BUILDING SHOP DRAWINGS)
FINISH: PREFINISHED
COLOR: EQUAL TO BUTLER BUILDING "COOL BIRCH WHITE"

KEY NOTE NO. 5A:
TYPES: CAP FLASHING AT EXTERIOR INSULATION FINISH SYSTEM (EIFS)
MFG: (REFER TO PRE-ENGINEERED METAL BUILDING SHOP DRAWINGS)
FINISH: FACTORY PRIMED AND FIELD PAINT
COLOR: EQUAL TO BUTLER BUILDING "COOL BIRCH WHITE"

KEY NOTE NO. 5B:
TYPE: CAP FLASHING AT EXTERIOR INSULATION FINISH SYSTEM (EIFS)
MFG: (REFER TO PRE-ENGINEERED METAL BUILDING SHOP DRAWINGS)
FINISH: FACTORY PRIMED AND FIELD PAINT
COLOR: SHERWIN WILLIAMS "POSITIVE RED" SW6871 (SHER-CRYL) GLOSS WITH SHERWIN WILLIAMS THREE COMPONENT (B65T105 / B65V105 / B65C105) CLEAR URETHANE

KEY NOTE NO. 6:
TYPE: PRE-ENGINEERED METAL BUILDING CONDUCTOR HEAD AND DOWNSPOUTS
MFG: (OWNER FURNISHED / CONTRACTOR INSTALLED)
FINISH: FACTORY PRIMED AND FIELD PAINTED
COLOR: EQUAL TO BUTLER BUILDING "COOL BIRCH WHITE"

DOORS AND WINDOWS

KEY NOTE NO. 12:
TYPE: STEEL DOORS AND FRAMES (DOORS NO. 2 AND 7)
MFG: (OWNER FURNISHED / CONTRACTOR INSTALLED)
FINISH: FACTORY PRIMED AND FIELD PAINTED
COLOR: SHERWIN WILLIAMS (MATCH ADJACENT MASONRY COLOR) (SEMI-GLOSS)

KEY NOTE NO. 13:
TYPE: (REFER TO WINDOW SCHEDULE)
MFG: EFCO, KAWNEER, OR OLD CASTLE (VISTA WALL). (NO SUBSTITUTES)
COLOR: EFCO "IVY", KAWNEER "DARK IVY", VISTA WALL "INTERSTATE GREEN"

PAINTING
KEY NOTE NO. 15:
TYPE: STEEL BOLLARDS (REFER TO CIVIL DRAWINGS)
FINISH: FIELD PRIMED AND PAINTED
COLOR: SHERWIN WILLIAMS "HUNT CLUB" SW6468 (SEMI-GLOSS)

ROOF ACCESS LADDER:
KEY NOTE NO. 18:
TYPE: PRE-FABRICATED ROOF ACCESS LADDER
MFG: LOCAL SUPPLIER
FINISH: FACTORY PRIME, FIELD PAINT
EQUAL TO BUTLER BUILDING "COOL BIRCH WHITE"

KEY NOTES

- (1A) EXTERIOR INSULATION AND FINISH SYSTEM (EIFS).
- (1B) EXTERIOR INSULATION AND FINISH SYSTEM (EIFS) ACCENT COLOR.
- (2A) CONCRETE MASONRY UNIT (CMU) EXTERIOR WALL CONSTRUCTION (ACCENT COLOR). REFER TO PLANS, SECTIONS, AND DETAILS FOR ADDITIONAL REQUIREMENTS.
- (2B) CONCRETE MASONRY UNIT (CMU) EXTERIOR WALL CONSTRUCTION (FIELD COLOR). REFER TO PLANS, SECTIONS, AND DETAILS FOR ADDITIONAL REQUIREMENTS.
- (3) PRE-ENGINEERED METAL BUILDING SHEET METAL ROOFING SYSTEM.
- (4) PRE-ENGINEERED METAL BUILDING SHEET METAL FLASHING (AT MASONRY)
- (5) PRE-ENGINEERED METAL BUILDING SHEET METAL FLASHING (AT EIFS)
- (6) PRE-ENGINEERED METAL BUILDING SHEET METAL GUTTER AND DOWNSPOUT SYSTEM.
- (7) CONCRETE MASONRY UNIT (CMU) CORNER FINISHED JAMB UNIT.
- (8) LINE OF ROOF BEYOND WITH 1/4":12" SLOPE MINIMUM.
- (9) SURFACE MOUNTED SIGN OWNER FURNISHED AND INSTALLED. PROVIDE BACKING FOR MOUNTING AND ROUGH-IN ELECTRICAL COORDINATE REQUIREMENTS WITH OWNER. REFER TO SHEET SG2.1.
- (10) BUILDING ADDRESS NUMBERS IN 6" HIGH HELVETICA WHITE VINYL ADHERED TO EXTERIOR FACE OF GLAZING.
- (11) PRE-ENGINEERED METAL BUILDING THRU WALL SCUPPER SYSTEM.
- (12) EXTERIOR DOOR AND FRAME SYSTEM. REFER TO FLOOR PLAN AND DOOR SCHEDULE FOR TYPES.
- (13) EXTERIOR WINDOW SYSTEM. REFER TO FLOOR PLAN AND WINDOW SCHEDULE FOR TYPES.
- (14) APPROXIMATE LINE OF FOUNDATION, REFER TO STRUCTURAL DRAWINGS.
- (15) STEEL BOLLARDS, REFER TO CIVIL AND STRUCTURAL DRAWINGS.
- (16) HOSE BIB, REFER TO PLUMBING DRAWINGS.
- (17) LIGHT FIXTURE, REFER TO ELECTRICAL DRAWINGS.
- (18) ROOF ACCESS LADDER. REFER TO EXTERIOR FINISH SCHEDULE.
- (19) MECHANICAL ROOF TOP UNIT, REFER TO MECHANICAL DRAWINGS.
- (20) MECHANICAL WALL PENETRATIONS, REFER TO MECHANICAL DRAWINGS. PROVIDE FRAMING, FLASHING, AND SEALANT AS REQUIRED. INSTALL RESTROOM EXHAUST FANS 12" MINIMUM ABOVE INTERIOR CEILING FRAMING.
- (21) PLUMBING ROOF VENT, REFER TO PLUMBING DRAWINGS AND DETAIL 11/A4.2.
- (22) CONCRETE SPLASH BLOCK INSTALL AT EACH DOWNSPOUT.
- (23) MASONRY CONTROL JOINT, REFER TO STRUCTURAL DRAWINGS. PROVIDE SEALANT OVER 1/2" DIAMETER FOAM BACKER ROD.
- (24) RUSTICATION JOINT, REFER TO DETAIL 6/A3.2.

CONCRETE MASONRY UNIT SPECIAL SCHEDULE OF TREATMENTS

GENERAL

1. REFER TO PROJECT MANUAL FOR ADDITIONAL REQUIREMENTS.
2. MANUFACTURER: SHERWIN WILLIAMS SPECIFIED. EQUAL PRODUCTS BY PPG INDUSTRIES ACCEPTABLE (NO SUBSTITUTES).
3. APPLICATION: INSTALL PER MANUFACTURER'S RECOMMENDATIONS FOR PROJECT CONDITIONS. EACH COAT SPECIFIED SHALL BE SPRAY APPLIED AND BACK ROLLED. COVERAGE THICKNESS INDICATED IN WET MIL UNITS, UNLESS OTHERWISE INDICATED.
4. QUALITY CONTROL: SUBMIT INSTALLER AND MANUFACTURER WARRANTIES SPECIFIED.

CONCRETE MASONRY UNIT (CMU) EXTERIOR SURFACE COATINGS:

1. FINISH COLORS: (REFER EXTERIOR FINISH SCHEDULE).
2. PRIMER: "LOXON" ACRYLIC BLOCK SURFACER "LX01W0200-LXN BLOCK SURF WH" (NO LESS THAN 16 MILS). TWO COATS MAY BE REQUIRED TO ACHIEVE PINHOLE FREE SURFACE. (REFER EXTERIOR FINISH SCHEDULE).
3. COAT 1: "LOXON" SELF-CLEANING ACRYLIC COATING "LX13W0051-LXN SELF-CLEAN EW" (NO LESS THAN 6 MILS). (REFER EXTERIOR FINISH SCHEDULE).
4. COAT 2: "LOXON" SELF-CLEANING ACRYLIC COATING "LX13W0051-LXN SELF-CLEAN EW" (NO LESS THAN 6 MILS). (REFER EXTERIOR FINISH SCHEDULE).

CONCRETE MASONRY UNIT (CMU) INTERIOR SURFACE COATINGS:

1. APPLY PRIOR TO INSTALLATION OF INTERIOR SURFACE FURRING, INSULATION, AND GYPSUM BOARD ASSEMBLIES.
2. FINISH COLOR: MATCH "W-2" (REFER INTERIOR FINISH TYPES).
3. PRIMER: "LOXON" WATER BLOCKING PRIMER "LX12W0050-LXN WTR BLCK PR WH" (NO LESS THAN 6 MILS). APPLICATION WITH OVERNIGHT DRYING BETWEEN COAT 1. MATCH "W-2" (REFER INTERIOR FINISH TYPES).
4. COAT 1: "LOXON" WATER BLOCKING PRIMER "LX12W0050-LXN WTR BLCK PR WH" (NO LESS THAN 6 MILS). MATCH "W-2" (REFER INTERIOR FINISH TYPES).

INDIVIDUAL ARCHITECTURAL REGISTRATION NO.: 5167
FIRM ARCHITECTURAL REGISTRATION NO.: AF0046

SHEETS BEARING THIS SEAL ARE AUTHENTICATED. RESPONSIBILITY FOR ALL OTHER PLANS, SPECIFICATIONS OR INSTRUMENTS ARE DISCLAIMED.

O'Reilly AUTO PARTS
CORPORATE OFFICES
233 SOUTH PATTERSON
SPRINGFIELD, MISSOURI 65802
(417) 862-2674 TELEPHONE

PROJECT:
NEW O'REILLY AUTO PARTS STORE
4523 READ BOULEVARD
NEW ORLEANS, LA 70127

EXTERIOR ELEVATIONS

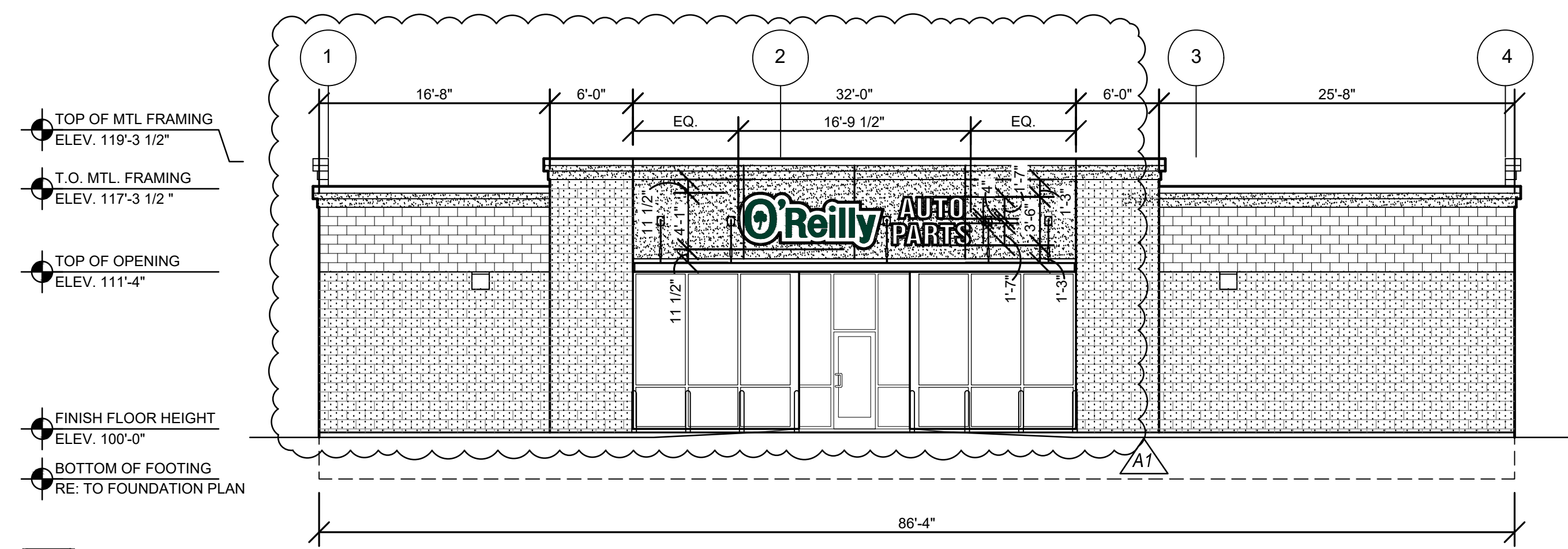
Buddy Webb & Company, Inc.
Architect - Consultant
3057 EAST CAIRO
SPRINGFIELD, MISSOURI 65802
(417) 877-1385 TELEPHONE
(417) 877-9736 FAX

DRAWN BY: **AJP** CHECKED BY: **SB**
DATE: **02/21/24**
REVISION:

PROJECT NUMBER:
NO1

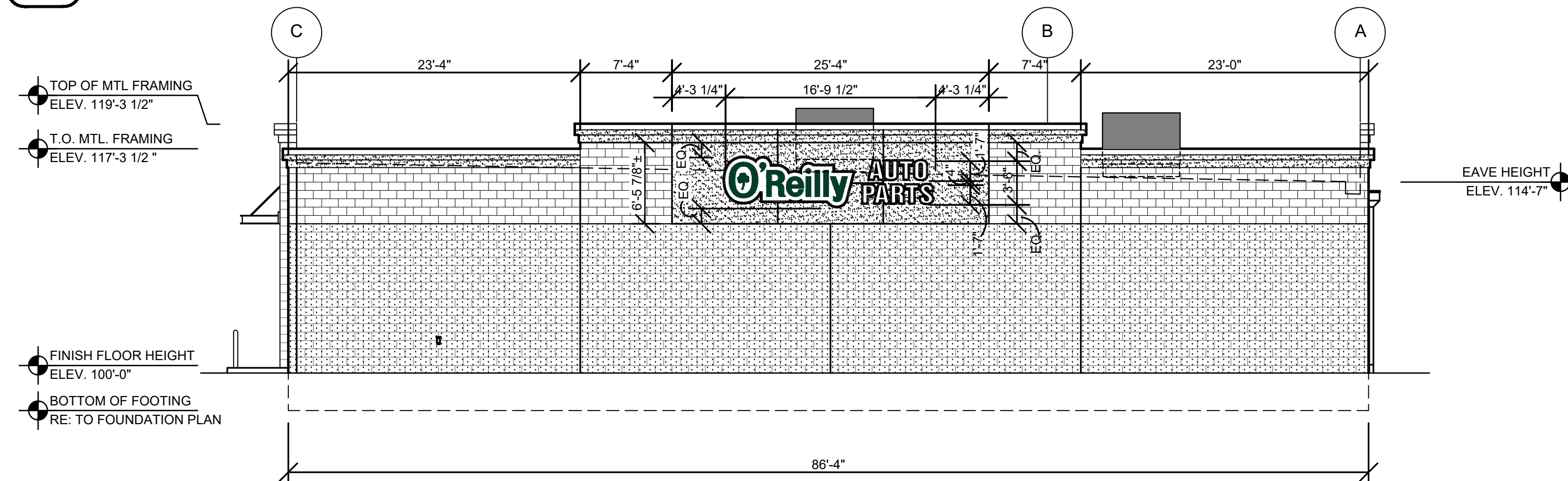
SHEET NUMBER

A2.1



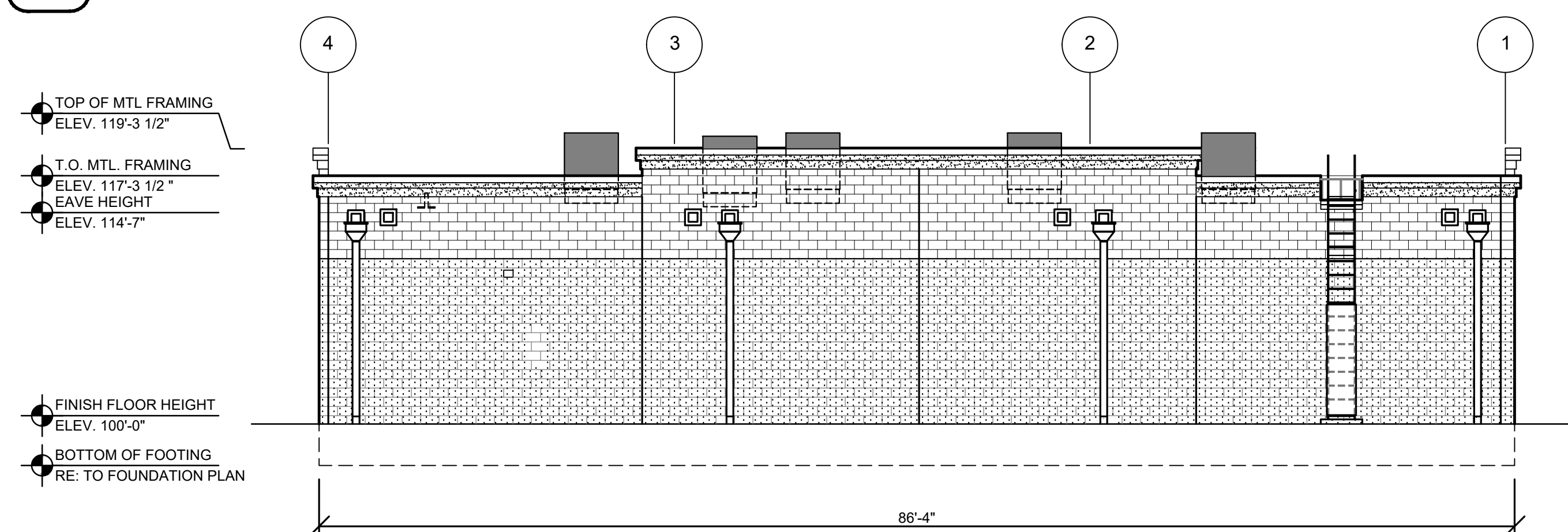
1 FRONT EXTERIOR ELEVATION

SG2.1 SCALE: 1/8" = 1'-0"



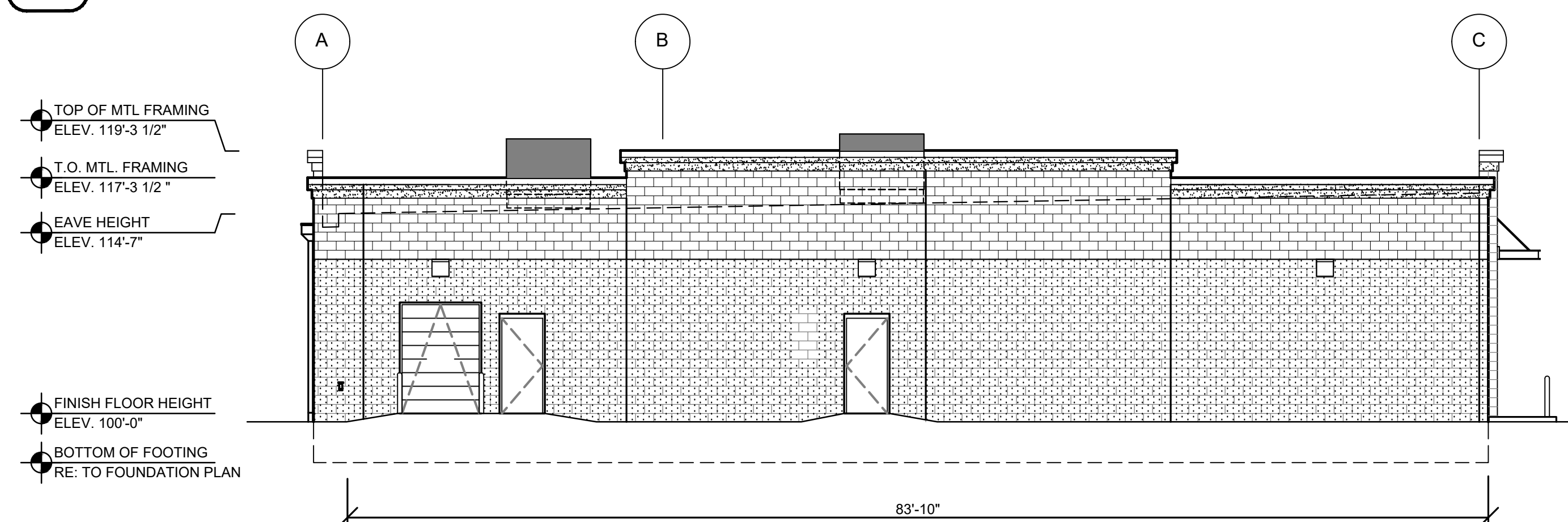
2 RIGHT EXTERIOR ELEVATION

SG2.1 SCALE: 1/8" = 1'-0"



3 REAR EXTERIOR ELEVATION

SG2.1 SCALE: 1/8" = 1'-0"



4 LEFT EXTERIOR ELEVATION

SG2.1 SCALE: 1/8" = 1'-0"

GENERAL NOTES

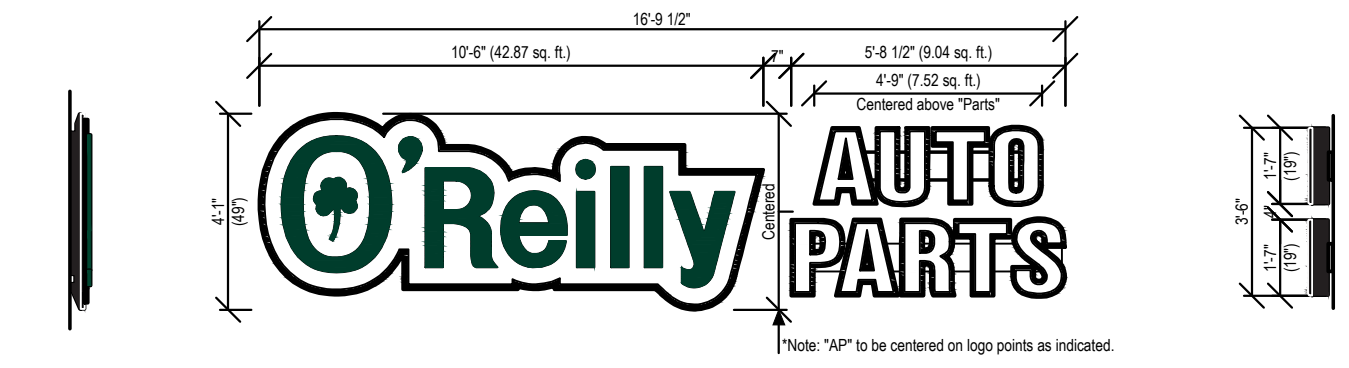
- A CONTACT OWNER'S OR TENANT'S DESIGNATED PROJECT ADMINISTRATOR FOR QUESTIONS OR CLARIFICATIONS.
- B BUILDING PERMANENT SIGNAGE OWNER FURNISHED AND INSTALLED, (REFER TO SCOPE OF WORK SCHEDULE). SIGNAGE GRAPHICS PROVIDED FOR REFERENCE ONLY (N.I.C.) AND CONTRACTOR'S COORDINATION WITH SPECIFIC PROJECT CONSTRUCTION CONDITIONS. CONTRACTOR TO PROVIDE BACKING AND ROUGH-IN ELECTRICAL AS REQUIRED FOR INSTALLATION. REFER TO A2.1 FOR EXTERIOR BUILDING FINISH.
- C REQUIRED GOVERNMENTAL PERMITS FOR PERMANENT TYPE SIGNAGE TO BE PROVIDED BY OWNER OR OTHERS (N.I.C.)

INDIVIDUAL ARCHITECTURAL REGISTRATION NO.: 3187
FIRM ARCHITECTURAL REGISTRATION NO.: AF0046



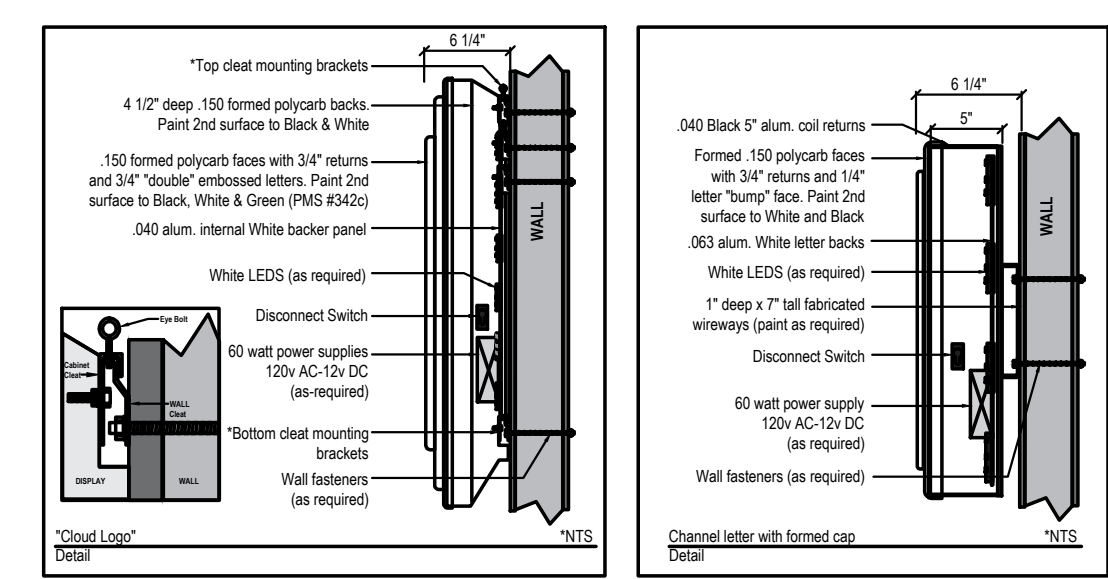
SHEETS BEARING THIS SEAL ARE AUTHENTICATED. RESPONSIBILITY FOR ALL OTHER PLANS, SPECIFICATIONS OR INSTRUMENTS ARE DISCLAIMED.

O'Reilly AUTO PARTS
CORPORATE OFFICES
238 SOUTH PATTERSON
NEW ORLEANS, LA 70127
(417) 882-2874 TELEPHONE



Part# 49/19-S-CldLogo&Chlrs-WFC
Scale 1/4" = 1'-0" 59.43 sq. ft. (Combined Individual Components) 68.57 (Encompassed Rectangle) *AUTO PARTS

O'Reilly Cloud Logo with *AP* channel letters on 7" (h) x 1" (d) wireways. Raceways paint color: TBD
O'Reilly Cloud Logo is formed polycarb with double embossment with 2nd surface painted graphics. Paint match to: Green (PMS# 342c), Black and White.
AP to have formed polycarb caps with 1/4" letter "bumps", Black 5" aluminum coil returns. 2nd surface Black and White paint. WHITE LED illumination.



Formed Cloud Logo with *AP* Formed Caps & Channel Returns
Part# 49/19-S-CldLogo&Chlrs-WFC

5 FRONT WALL SIGN DETAILS

SG2.1 SCALE: 1/4" = 1'-0"

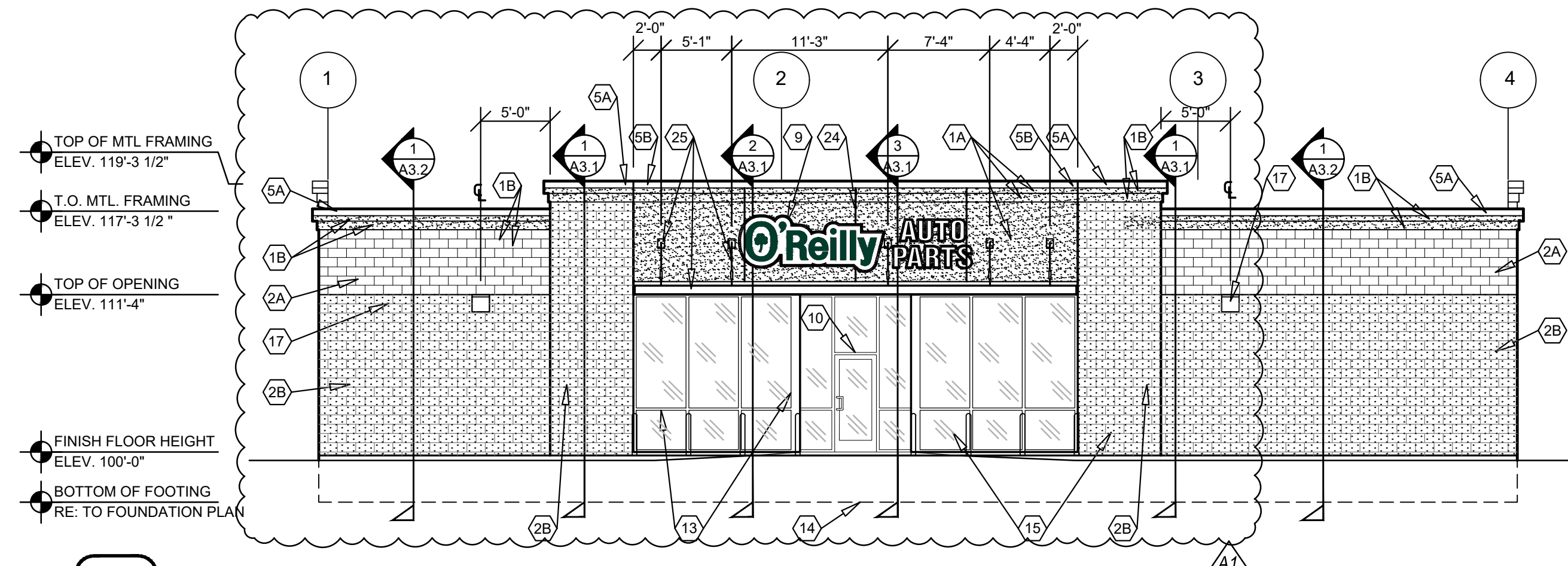
PROJECT:
NEW O'REILLY AUTO PARTS STORE
4523 READ BOULEVARD
NEW ORLEANS, LA 70127
BUILDING EXTERIOR SIGNAGE

Buddy Webb & Company, Inc.
Architect - Consultant
3057 EAST CAIRO
SPRINGFIELD, MISSOURI 65802
(417) 877-1385 TELEPHONE
(417) 877-9736 FAX

DRAWN BY:	CHECKED BY:
AJP	SB
DATE:	
03/25/24	
REVISION:	
A1	04/09/24
PROJECT NUMBER:	
NO1	
SHEET NUMBER	

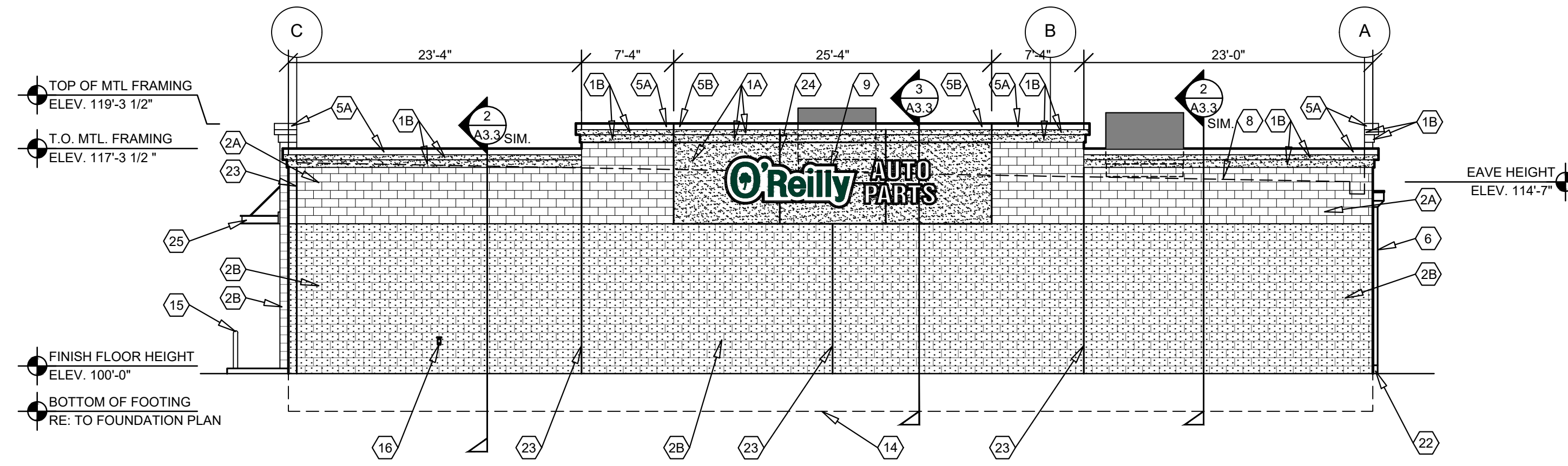
SG2.1

© COPYRIGHT 2024 - DESIGNS, DRAWINGS AND SPECIFICATIONS ARE INSTRUMENTS OF SERVICE AND ARE THE PROPERTY OF THE DESIGN PROFESSIONAL. REPRODUCTION PROHIBITED WITHOUT THE EXPRESSED WRITTEN CONSENT OF THE DESIGN PROFESSIONAL.



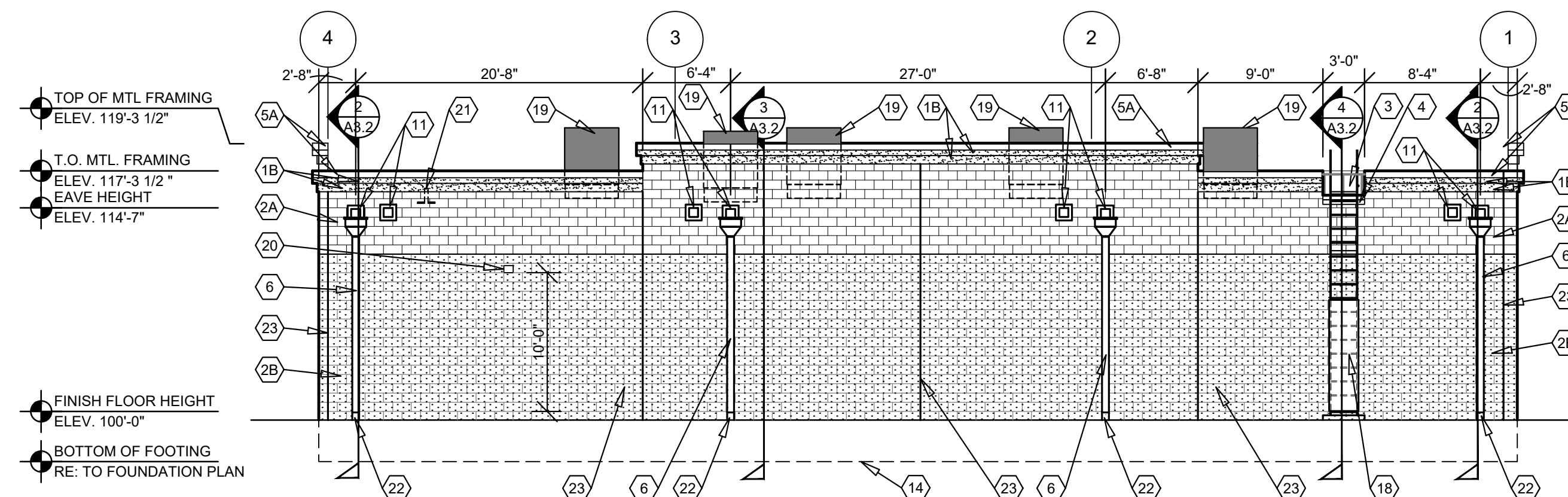
1 FRONT EXTERIOR ELEVATION

A2.1 SCALE: 1/8" = 1'-0"



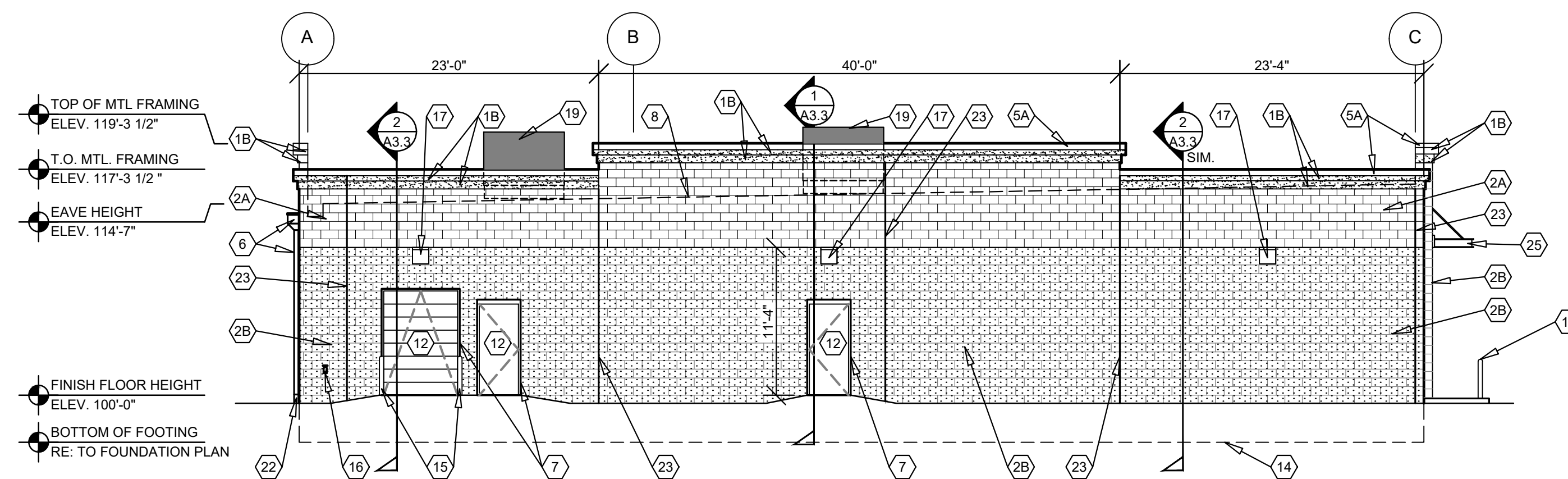
2 RIGHT EXTERIOR ELEVATION

A2.1 SCALE: 1/8" = 1'-0"



3 REAR EXTERIOR ELEVATION

A2.1 SCALE: 1/8" = 1'-0"



4 LEFT EXTERIOR ELEVATION

A2.1 SCALE: 1/8" = 1'-0"

GENERAL NOTES

- (A) REFER TO PROJECT MANUAL FOR ADDITIONAL REQUIREMENTS.
- (B) REFER TO CIVIL DRAWINGS FOR ADDITIONAL REQUIREMENTS.
- (C) REFER TO PLUMBING, MECHANICAL, AND ELECTRICAL DRAWINGS FOR SYSTEM TYPES AND ADDITIONAL REQUIREMENTS.
- (D) REFER TO EXTERIOR FINISH SCHEDULE FOR MATERIAL TYPES.
- (E) REFER TO PRE-ENGINEERED METAL BUILDING SHOP DRAWINGS FOR ADDITIONAL REQUIREMENTS.
- (F) REFER TO SCOPE OF WORK SCHEDULE FOR ADDITIONAL REQUIREMENTS.

EXTERIOR FINISH SCHEDULE

EXTERIOR INSULATION AND FINISH SYSTEM (EIFS)

KEY NOTE NO. 1A:
MFG: DRYVIT SPECIFIED. EQUAL BY STO OR MASTER BUILDERS (NO SUBSTITUTES)
SERIES: OUTSULATION PLUS MD
TEXTURE: SANDBLAST
COLOR: DRYVIT "ORAP011030S" STRATOTONE HIGH PERFORMANCE
COLOR STANDARD: SHERWIN WILLIAMS "POSITIVE RED" SW6871 (SHER-CRYL) GLOSS

KEY NOTE NO. 1B:
MFG: DRYVIT SPECIFIED. EQUAL BY STO OR MASTER BUILDERS (NO SUBSTITUTES)
SERIES: OUTSULATION PLUS MD
TEXTURE: SANDBLAST
COLOR: DRYVIT "ORAP011030S" STRATOTONE HIGH PERFORMANCE
COLOR STANDARD: SHERWIN WILLIAMS "SOFTER TAN" SW6141 (SHER-CRYL) GLOSS

UNIT MASONRY

KEY NOTE NO. 2A:
TYPE: CONCRETE MASONRY UNIT (CMU)
MFG: (REFER TO PROJECT MANUAL)
SIZE: 8"X8"X16" (NOM)
TEXTURE: SMOOTH FACE
COURSING: RUNNING BOND
FINISH: FIELD PAINT (ACCENT COLOR)
COLOR: SHERWIN WILLIAMS "SOFTER TAN" SW6141 (SATIN)
NOTE: REFER TO "CONCRETE MASONRY UNIT SPECIAL SCHEDULE OF TREATMENTS" FOR ADDITIONAL REQUIREMENTS.

KEY NOTE NO. 2B:
TYPE: CONCRETE MASONRY UNIT (CMU)
MFG: (REFER TO PROJECT MANUAL)
SIZE: 8"X8"X16" (NOM)
TEXTURE: SPLIT FACE
COURSING: RUNNING BOND
FINISH: FIELD PAINT (FIELD COLOR)
COLOR: SHERWIN WILLIAMS "LATTE" SW6108 (SATIN)
NOTE: REFER TO "CONCRETE MASONRY UNIT SPECIAL SCHEDULE OF TREATMENTS" FOR ADDITIONAL REQUIREMENTS.

FLASHING AND SHEET METAL

KEY NOTE NO. 3:
TYPE: STANDING SEAM ROOFING SYSTEM
MFG: (REFER TO PRE-ENGINEERED METAL BUILDING SHOP DRAWINGS)
COLOR: GALVALUME

KEY NOTE NO. 4:
TYPE: CAP FLASHING AT MASONRY
MFG: (REFER TO PRE-ENGINEERED METAL BUILDING SHOP DRAWINGS)
FINISH: PREFINISHED
COLOR: EQUAL TO BUTLER BUILDING "COOL BIRCH WHITE"

KEY NOTE NO. 5A:
TYPE: CAP FLASHING AT EXTERIOR INSULATION FINISH SYSTEM (EIFS)
MFG: (REFER TO PRE-ENGINEERED METAL BUILDING SHOP DRAWINGS)
FINISH: FACTORY PRIMED AND FIELD PAINT
COLOR: EQUAL TO BUTLER BUILDING "COOL BIRCH WHITE"

KEY NOTE NO. 5B:
TYPE: CAP FLASHING AT EXTERIOR INSULATION FINISH SYSTEM (EIFS)
MFG: (REFER TO PRE-ENGINEERED METAL BUILDING SHOP DRAWINGS)
FINISH: FACTORY PRIMED AND FIELD PAINT
COLOR: SHERWIN WILLIAMS "POSITIVE RED" SW6871 (SHER-CRYL) GLOSS WITH SHERWIN WILLIAMS THREE COMPONENT (B65T105 / B65V105 / B65C105) CLEAR URETHANE

KEY NOTE NO. 6:
TYPE: PRE-ENGINEERED METAL BUILDING CONDUCTOR HEAD AND DOWNSPOUTS
MFG: (OWNER FURNISHED / CONTRACTOR INSTALLED)
FINISH: FACTORY PRIMED AND FIELD PAINTED
COLOR: SHERWIN WILLIAMS "SOFTER TAN" SW6141 (SEMI-GLOSS)

DOORS AND WINDOWS

KEY NOTE NO. 12:
TYPE: STEEL DOORS AND FRAMES (DOORS NO. 2 AND 7)
MFG: (OWNER FURNISHED / CONTRACTOR INSTALLED)
FINISH: FACTORY PRIMED AND FIELD PAINTED
COLOR: SHERWIN WILLIAMS (MATCH ADJACENT MASONRY COLOR) (SEMI-GLOSS)

KEY NOTE NO. 12:
TYPE: STEEL DOORS AND FRAMES (DOORS NO. 3)
MFG: (REFER PROJECT MANUAL)
FINISH: FACTORY PRIMED AND FIELD PAINTED
COLOR: SHERWIN WILLIAMS (MATCH ADJACENT MASONRY COLOR) (SEMI-GLOSS)

KEY NOTE NO. 13:
TYPE: (REFER TO WINDOW SCHEDULE)
MFG: EFCO, KAWNEER, OR OLD CASTLE (VISTA WALL), (NO SUBSTITUTES)
COLOR: EFCO "IVV", KAWNEER "DARK IVV", VISTA WALL "INTERSTATE GREEN"

PAINTING

KEY NOTE NO. 15:
TYPE: STEEL BOLLARDS (REFER TO CIVIL DRAWINGS)
FINISH: FIELD PRIMED AND PAINTED
COLOR: SHERWIN WILLIAMS "HUNT CLUB" SW6468 (SEMI-GLOSS)

ROOF ACCESS LADDER:

KEY NOTE NO. 18:
TYPE: PRE-FABRICATED ROOF ACCESS LADDER
MFG: LOCAL SUPPLIER
FINISH: FACTORY PRIME, FIELD PAINT
COLOR: SHERWIN WILLIAMS "SOFTER TAN" SW6141 (SEMI-GLOSS)

PRE-FABRICATED METAL CANOPY:

KEY NOTE NO. 25:
SERIES: PRE-FABRICATED METAL CANOPY SYSTEM
MFG: (REFER PROJECT MANUAL)
FINISH: KYNAR FINISH
COLOR: (MATCH WINDOW SYSTEM)

KEY NOTES

- (1A) EXTERIOR INSULATION AND FINISH SYSTEM (EIFS).
- (1B) EXTERIOR INSULATION AND FINISH SYSTEM (EIFS) ACCENT COLOR.
- (2A) CONCRETE MASONRY UNIT (CMU) EXTERIOR WALL CONSTRUCTION (ACCENT COLOR). REFER TO PLANS, SECTIONS, AND DETAILS FOR ADDITIONAL REQUIREMENTS.
- (2B) CONCRETE MASONRY UNIT (CMU) EXTERIOR WALL CONSTRUCTION (FIELD COLOR). REFER TO PLANS, SECTIONS, AND DETAILS FOR ADDITIONAL REQUIREMENTS.
- (3) PRE-ENGINEERED METAL BUILDING SHEET METAL ROOFING SYSTEM.
- (4) PRE-ENGINEERED METAL BUILDING SHEET METAL FLASHING (AT MASONRY)
- (5A) PRE-ENGINEERED METAL BUILDING SHEET METAL FLASHING (AT EIFS)
- (5B) PRE-ENGINEERED METAL BUILDING SHEET METAL FLASHING (AT EIFS)
- (6) PRE-ENGINEERED METAL BUILDING SHEET METAL GUTTER AND DOWNSPOUT SYSTEM.
- (7) CONCRETE MASONRY UNIT (CMU) CORNER FINISHED JAMB UNIT.
- (8) LINE OF ROOF BEYOND WITH 1/4":12" SLOPE MINIMUM.
- (9) SURFACE MOUNTED SIGN OWNER FURNISHED AND INSTALLED. PROVIDE BACKING FOR MOUNTING AND ROUGH-IN ELECTRICAL COORDINATE REQUIREMENTS WITH OWNER. REFER TO SHEET SG2.1.
- (10) BUILDING ADDRESS NUMBERS IN 6" HIGH HELVETICA WHITE VINYL ADHERED TO EXTERIOR FACE OF GLAZING.
- (11) PRE-ENGINEERED METAL BUILDING THRU WALL SCUPPER SYSTEM.
- (12) EXTERIOR DOOR AND FRAME SYSTEM. REFER TO FLOOR PLAN AND DOOR SCHEDULE FOR TYPES.
- (13) EXTERIOR WINDOW SYSTEM. REFER TO FLOOR PLAN AND WINDOW SCHEDULE FOR TYPES.
- (14) APPROXIMATE LINE OF FOUNDATION. REFER TO STRUCTURAL DRAWINGS.
- (15) STEEL BOLLARDS. REFER TO CIVIL AND STRUCTURAL DRAWINGS.
- (16) HOSE BIB. REFER TO PLUMBING DRAWINGS.
- (17) LIGHT FIXTURE. REFER TO ELECTRICAL DRAWINGS.
- (18) ROOF ACCESS LADDER. REFER TO EXTERIOR FINISH SCHEDULE.
- (19) MECHANICAL ROOF TOP UNIT. REFER TO MECHANICAL DRAWINGS.
- (20) MECHANICAL WALL PENETRATIONS. REFER TO MECHANICAL DRAWINGS. PROVIDE FRAMING, FLASHING, AND SEALANT AS REQUIRED. INSTALL RESTROOM EXHAUST FANS 12" MINIMUM ABOVE INTERIOR CEILING FRAMING.
- (21) PLUMBING ROOF VENT. REFER TO PLUMBING DRAWINGS AND DETAIL 11/A4.2.
- (22) DOWNSPOUT COLLECTION SYSTEM. REFER TO DETAIL 6/C1.2 AND CIVIL DRAWINGS FOR CONTINUATION.
- (23) MASONRY CONTROL JOINT. REFER TO STRUCTURAL DRAWINGS. PROVIDE SEALANT OVER 1/2" DIAMETER FOAM BACKER ROD.
- (24) RUSTICATION JOINT. REFER TO DETAIL 8/A3.32.
- (25) PRE-FABRICATED METAL CANOPY SYSTEM. REFER TO EXTERIOR FINISH SCHEDULE AND WALL SECTIONS FOR DETAILS.

CONCRETE MASONRY UNIT SPECIAL SCHEDULE OF TREATMENTS

GENERAL

1. REFER TO PROJECT MANUAL FOR ADDITIONAL REQUIREMENTS.
2. MANUFACTURER: SHERWIN WILLIAMS SPECIFIED. EQUAL PRODUCTS BY PPG INDUSTRIES ACCEPTABLE (NO SUBSTITUTES).
3. APPLICATION: INSTALL PER MANUFACTURER'S RECOMMENDATIONS FOR PROJECT CONDITIONS. EACH COAT SPECIFIED SHALL BE SPRAY APPLIED AND BACK ROLLED. COVERAGE THICKNESS INDICATED IN WET MIL UNITS, UNLESS OTHERWISE INDICATED.
4. QUALITY CONTROL: SUBMIT INSTALLER AND MANUFACTURER WARRANTIES SPECIFIED.

CONCRETE MASONRY UNIT (CMU) EXTERIOR SURFACE COATINGS:

1. FINISH COLORS: (REFER EXTERIOR FINISH SCHEDULE).
2. PRIMER: "LOXON" ACRYLIC BLOCK SURFACER "LX10W0200-LXN BLOCK SURF WH" (NO LESS THAN 16 MILS). TWO COATS MAY BE REQUIRED TO ACHIEVE PINHOLE FREE SURFACE. (REFER EXTERIOR FINISH SCHEDULE).
3. COAT 1: "LOXON" SELF-CLEANING ACRYLIC COATING "LX13W0051-LXN SELF-CLEAN EV" (NO LESS THAN 6 MILS). (REFER EXTERIOR FINISH SCHEDULE).
4. COAT 2: "LOXON" SELF-CLEANING ACRYLIC COATING "LX13W0051-LXN SELF-CLEAN EV" (NO LESS THAN 6 MILS). (REFER EXTERIOR FINISH SCHEDULE).

CONCRETE MASONRY UNIT (CMU) INTERIOR SURFACE COATINGS:

1. APPLY PRIOR TO INSTALLATION OF INTERIOR SURFACE FURRING, INSULATION, AND GYPSUM BOARD ASSEMBLIES.
2. FINISH COLOR: MATCH "W-2" (REFER INTERIOR FINISH TYPES).
3. PRIMER: "LOXON" WATER BLOCKING PRIMER "LX12W0050-LXN WTR BLCK PR WH" (NO LESS THAN 6 MILS). APPLICATION WITH OVERNIGHT DRYING BETWEEN COAT 1. MATCH "W-2" (REFER INTERIOR FINISH TYPES).
4. COAT 1: "LOXON" WATER BLOCKING PRIMER "LX12W0050-LXN WTR BLCK PR WH" (NO LESS THAN 6 MILS). MATCH "W-2" (REFER INTERIOR FINISH TYPES).

INDIVIDUAL ARCHITECTURAL REGISTRATION NO.: 5167
FIRM ARCHITECTURAL REGISTRATION NO.: AFD046



SHEETS BEARING THIS SEAL ARE AUTHENTICATED. RESPONSIBILITY FOR ALL OTHER PLANS, SPECIFICATIONS OR INSTRUMENTS ARE DISCLAIMED.

Buddy Webb & Company, Inc.
Architect - Consultant
3057 EAST CAIRO
SPRINGFIELD, MISSOURI 65802
(417) 877-1385 TELEPHONE
(417) 882-2674 TELEPHONE

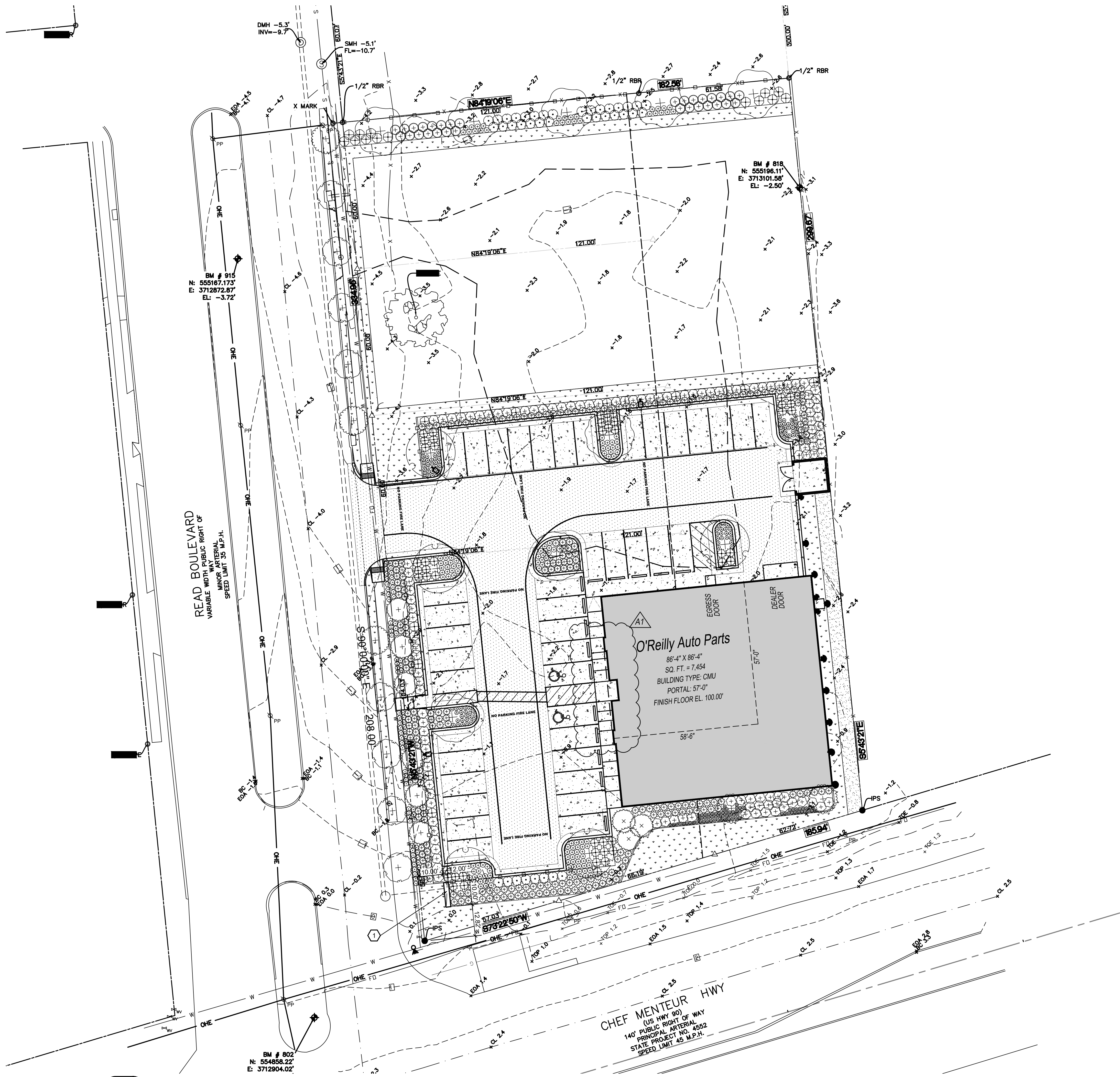
PROJECT:
NEW O'REILLY AUTO PARTS STORE
4523 READ BOULEVARD
NEW ORLEANS, LA 70127

EXTERIOR ELEVATIONS

Buddy Webb & Company, Inc.
Architect - Consultant
3057 EAST CAIRO
SPRINGFIELD, MISSOURI 65802
(417) 877-1385 TELEPHONE
(417) 877-9736 FAX

DRAWN BY: **AJP** CHECKED BY: **SB**
DATE: **03/25/24**
REVISION: **A1 04/09/24**
PROJECT NUMBER: **NO1**
SHEET NUMBER

A2.1



1 SITE SIGNAGE PLAN
 SG1.1 SCALE: 1" = 20'-0"

- ### GENERAL NOTES
- A REFER TO PROJECT MANUAL AND SCOPE OF WORK SCHEDULE FOR ADDITIONAL REQUIREMENTS.
 - B SITE DIMENSIONS TO FACE OF CONCRETE FOUNDATION, SIDEWALK, CURB GUTTER LINE, PROPERTY LINE, OR CENTER LINE OF STRIPING UNLESS OTHERWISE NOTED.
 - C COORDINATE WORK WITH OTHER SITE RELATED DEVELOPMENT DRAWINGS.
 - D PRIOR TO INSTALLATION, CONTRACTOR TO VERIFY LOCATIONS OF LIGHT POLES, LANDSCAPING, AND UTILITIES DO NOT CONFLICT WITH SITE SIGN LOCATION SHOWN. REFER TO US1 AND CIVIL FOR UTILITY LOCATIONS. IF CONFLICT IS DISCOVERED, CONTRACTOR TO NOTIFY OWNER'S REPRESENTATIVE PRIOR TO PROCEEDING WITH THE WORK.
 - E *COMING SOON* TEMPORARY CONSTRUCTION SIGN TO BE PROVIDED BY CONTRACTOR. APPLIED SIGNAGE GRAPHICS TO BE OWNER FURNISHED AND CONTRACTOR INSTALLED. LOCATE TEMPORARY CONSTRUCTION SIGN ON SITE SO AS TO BE VISIBLE TO PUBLIC FROM RIGHT-OF-WAY. REFER TO DETAIL 1/SG1.2.
- SPECIAL NOTE:**
 AVOID OBSCURING VISIBILITY OF SITE SIGN FROM RIGHT OF WAY WITH LARGE PLANTINGS AND LANDSCAPING. SUBMIT LANDSCAPING LAYOUT FOR FINAL OWNER REVIEW AND APPROVAL PRIOR TO INSTALLATION.

- ### KEY NOTES
- 1 SITE SIGN, REFER TO ELEVATION 2/SG1.2

INDIVIDUAL ARCHITECTURAL REGISTRATION NO. 3187
 FIRM ARCHITECTURAL REGISTRATION NO.: AF0046

DESIGN BY OTHERS FOR REFERENCE ONLY

O'Reilly AUTO PARTS
 CORPORATE OFFICES
 232 SOUTH PATTERSON
 NEW ORLEANS, LA 70112
 (417) 882-2874 TELEPHONE

PROJECT:
 NEW O'REILLY AUTO PARTS STORE
 4523 READ BOULEVARD
 NEW ORLEANS, LA 70127

SITE SIGNAGE PLAN

Buddy Webb & Company, Inc.
Architect - Consultant
 3057 EAST CAIRO
 SPRINGFIELD, MISSOURI 65802
 (417) 877-1385 TELEPHONE
 (417) 877-9736 FAX

DRAWN BY:	CHECKED BY:
AJP	SB
DATE:	
03/25/24	
REVISION:	
A1 04/09/24	
PROJECT NUMBER:	
NO1	
SHEET NUMBER:	

CAUTION:
 INFORMATION ON THIS DRAWING CONCERNING TYPE AND LOCATION OF UNDERGROUND AND OTHER UTILITIES IS NOT GUARANTEED TO BE ACCURATE OR ALL INCLUSIVE. THE CONTRACTOR IS RESPONSIBLE FOR MAKING HIS OWN DETERMINATION AS TO THE TYPE AND LOCATION OF UNDERGROUND AND OTHER UTILITIES AS MAY BE NECESSARY TO AVOID DAMAGE THERETO.

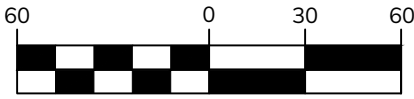


**Know what's below
 Call before you dig.**

SG1.1



GRAPHIC SCALE



(IN U.S. SURVEY FEET)
1 INCH = 60 U.S. SURVEY FEET

1 →

2 ↘

3 →

4 ↗

5 →

6 ↑
7 →

8 ↑

9 ↑

18 ↖
17 ↗
16 ↘

19 ↘

20 ↘

21 ↘

22 ↘

12 ↑

10 ↖

11 ↗

13 ↗

14 ↗

15 ↖

24 ↘

23 ↗

26 ↖

25 ↘

27 ↖

28 ↗

READ BOULEVARD

SUBJECT TRACT

CHEF MENTEUR HWY

O'REILLY AUTOMOTIVE STORES, INC.
PHOTO BOOK LAYOUT KEY

SECTION 44, T12S, R12E
THIRD DISTRICT
CITY OF NEW ORLEANS
ORLEANS PARISH, LOUISIANA

DRAWING INFO.:

DRAWN BY: DH
DATE: 12/01/2023
JOB NUMBER: 23RO20062

5311 W. VILLAGE PKWY
ROGERS, AR 72758
479.286.8181
WEAREOWN.COM

FORMERLY ANDERSON ENGINEERING



O'REILLY AUTOMOTIVE STORES, INC.

PICTURES OF SUBJECT TRACT

SECTION 44, T12S, R12E
THIRD DISTRICT
CITY OF NEW ORLEANS, ORLEANS PARISH, LOUISIANA
JOB NO 23RO20062

PICTURES TAKEN ON NOVEMBER 29TH, 2023

DATE: DECEMBER 1ST, 2023



1

Off-site – West of Northwest corner of subject property, looking east.



2

Off-site – Southwest of the northwest corner of subject property, looking southeast.



3

Off-site – Southwest of the northwest corner of subject property, looking east.



4

Off-site – Northwest of southwest corner of subject property, looking northeast.



5

Off-site – Northwest of southwest corner of subject property, looking east.



6

Off-site – West of southwest corner of subject property, looking north.



7

Off-site – West of southwest corner of subject property, looking east.



8

Off-site – Southeast of southwest corner of subject property, looking north.



9

Off-site – Southeast of southwest corner of subject property, looking north.



10

Off-site – Southwest of southeast corner of subject property, looking southwest.



11

Off-site – Southwest of southeast corner of subject property, looking northeast.



12

Off-site – Southwest of southeast corner of subject property, looking north.



13

Off-site – South of southeast corner of subject property, looking northeast.



14

Off-site – South of southeast corner of subject property, looking north.



15

Off-site – South of southeast corner of subject property, looking west.



16

Off-site – South of southwest corner of subject property, looking southwest.



17

Off-site – South of southwest corner of subject property, looking northeast.



18

Off-site – South of southwest corner of subject property, looking north.



19

Northeast of southwest corner of subject property, looking southwest.



20

Northeast of southwest corner of subject property, looking south.



21

Northwest of southeast corner of subject property, looking south.



22

Northwest of southeast corner of subject property, looking south.



23

Northwest of southeast corner of subject property, looking east.



24

Northwest of southeast corner of subject property, looking southeast.



25

Center of subject property, looking southeast.



26

Center of subject property, looking southwest.



27

Center of subject property, looking northwest.



28

Center of subject property, looking northeast.