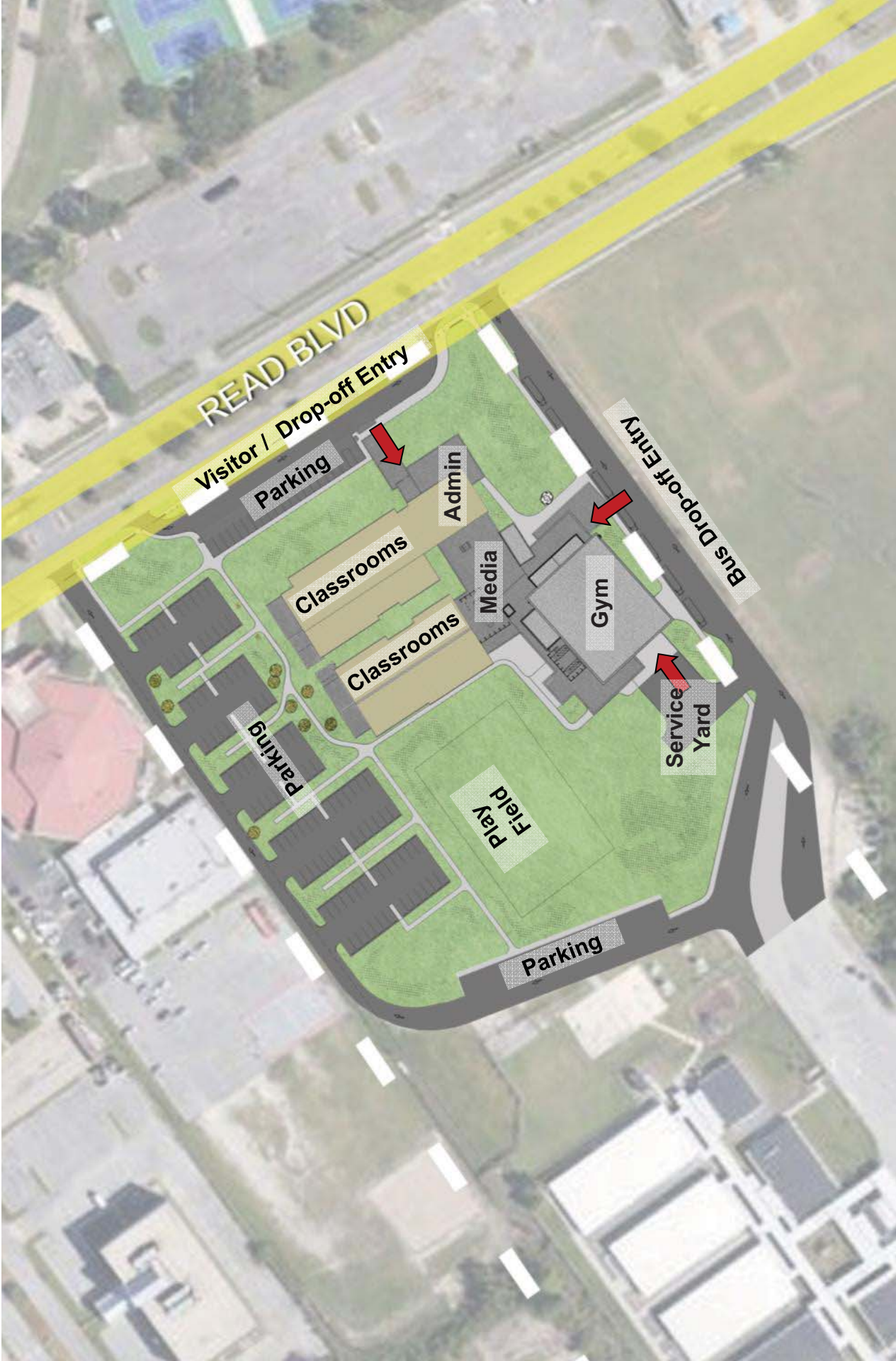


# Vehicular Site Access

Excellence.Equity.Community.

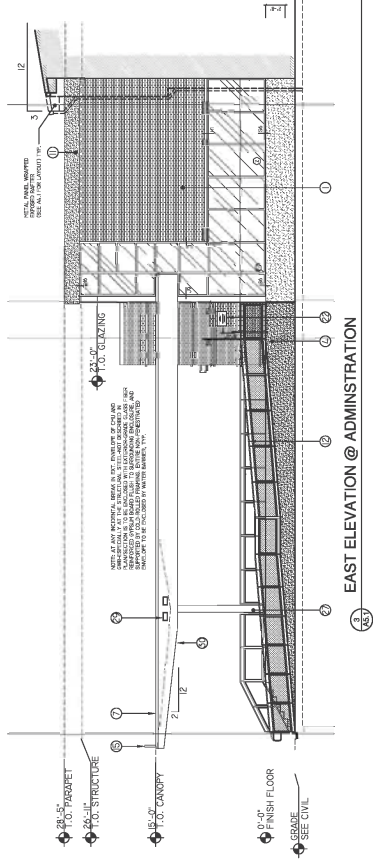


# Circulation and Massing

Excellence.Equity.Community.

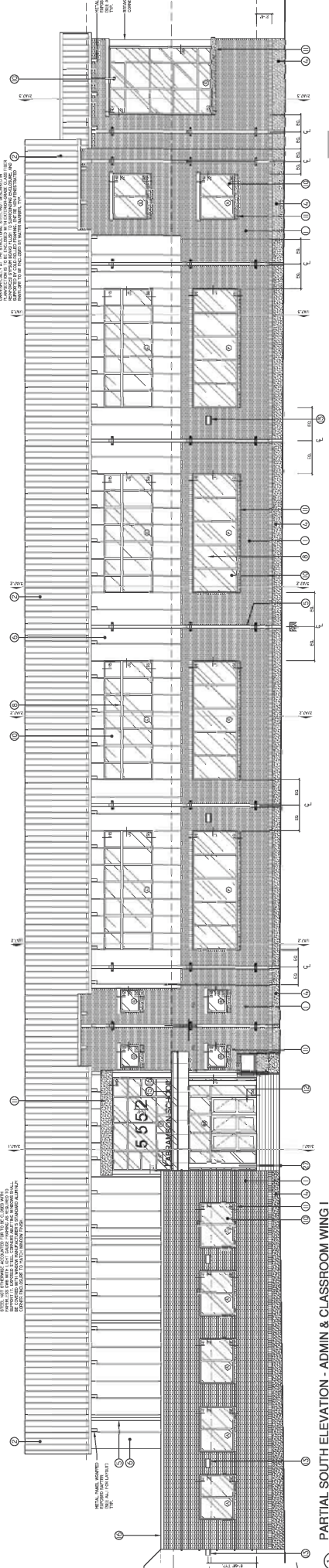
**FINISH LEGEND**

- 1 BRICK VENEER
- 2 EXPOSURE SCAM METAL ROOF
- 3 NOT USED
- 4 EXPOSED FOUNDATION
- 5 ROOF LEADER
- 6 VERTICAL INSULATED METAL PANEL
- 7 METAL PANEL CANOPY
- 8 SUN SHADE / LOUVER DEVICE
- 9 PERFORATED CORRUGATED ALUMINUM SCREENING PANEL
- 10 GLAZING JOINT
- 11 CORRUGATED METAL RAILING SYSTEM, RE: SPECS
- 12 EXTERIOR LIGHTING ELEMENT
- 13 BITUMEN ROOFING SYSTEM
- 14 METAL COPING
- 15 Poured in place concrete planter
- 16 CORRUGATED METAL PANEL SYSTEM (RE: SPECS)
- 17 MECHANICAL LOUVER (RE: MECH. DWGS.)
- 18 CERAMIC FRITTED SIGNAGE
- 19 NOT USED
- 20 COMPOSITE FENCING
- 21 ROOF ACCESS LADDER (W/LOCKING GATE)
- 22 FINISHED CONCRETE COLUMN
- 23 PANELLED METAL CURTAIN
- 24 BREAK METAL WRAP
- 25 OVERFLOW SCUPPER
- 26 PANELIZED LOUVER SYSTEM



**EAST ELEVATION @ ADMINISTRATION**

NOTE: ALL MATERIALS, FINISHES AND COLORS ARE TO BE DETERMINED BY THE ARCHITECT AND SHALL BE SUBJECT TO THE APPROVAL OF THE CITY OF NEW ORLEANS. ALL MATERIALS, FINISHES AND COLORS SHALL BE MATCHED TO THE EXISTING BUILDING. ALL MATERIALS, FINISHES AND COLORS SHALL BE MATCHED TO THE EXISTING BUILDING. ALL MATERIALS, FINISHES AND COLORS SHALL BE MATCHED TO THE EXISTING BUILDING.



**PARTIAL SOUTH ELEVATION - ADMIN & CLASSROOM WING I**

- CONDITIONAL USE APPROVAL -  
 ZONING DOCKET # \_\_\_\_\_ WAIVERS \_\_\_\_\_ PROVISIONS \_\_\_\_\_  
 FINAL ACTION \_\_\_\_\_ ADOPTED DATE: \_\_\_\_\_  
 ORDINANCE # \_\_\_\_\_  
 FINAL PLAN APPROVAL DATE: \_\_\_\_\_  
 EXECUTIVE DIRECTOR OF CITY PLANNING COMMISSION

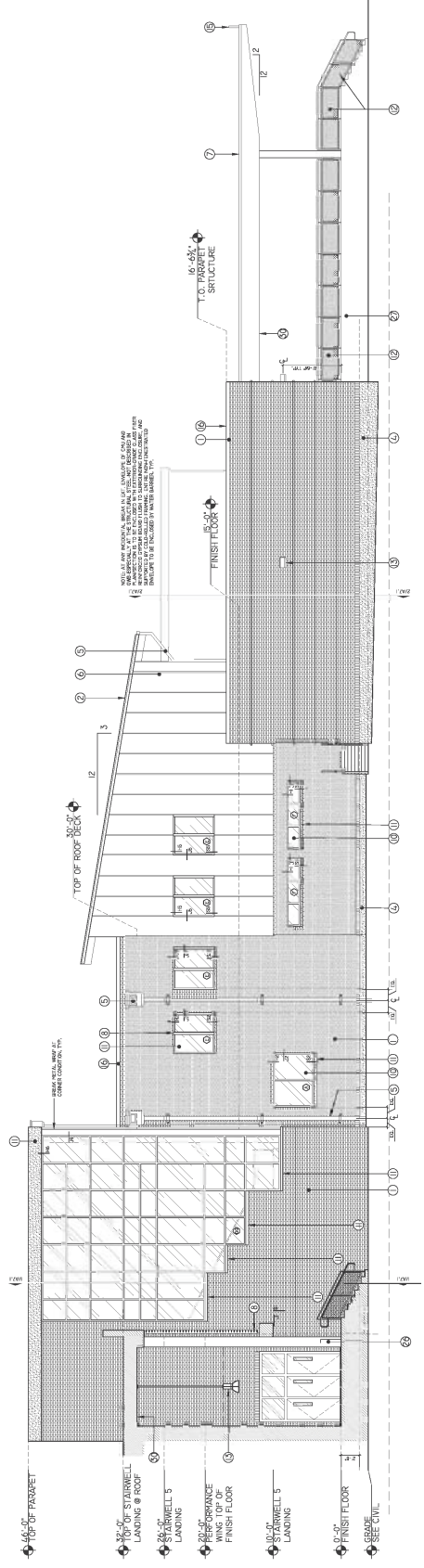
**A-5.1**

**ABRAMSON SCHOOL**  
 5552 READ BLVD. - New Orleans, Louisiana 70127

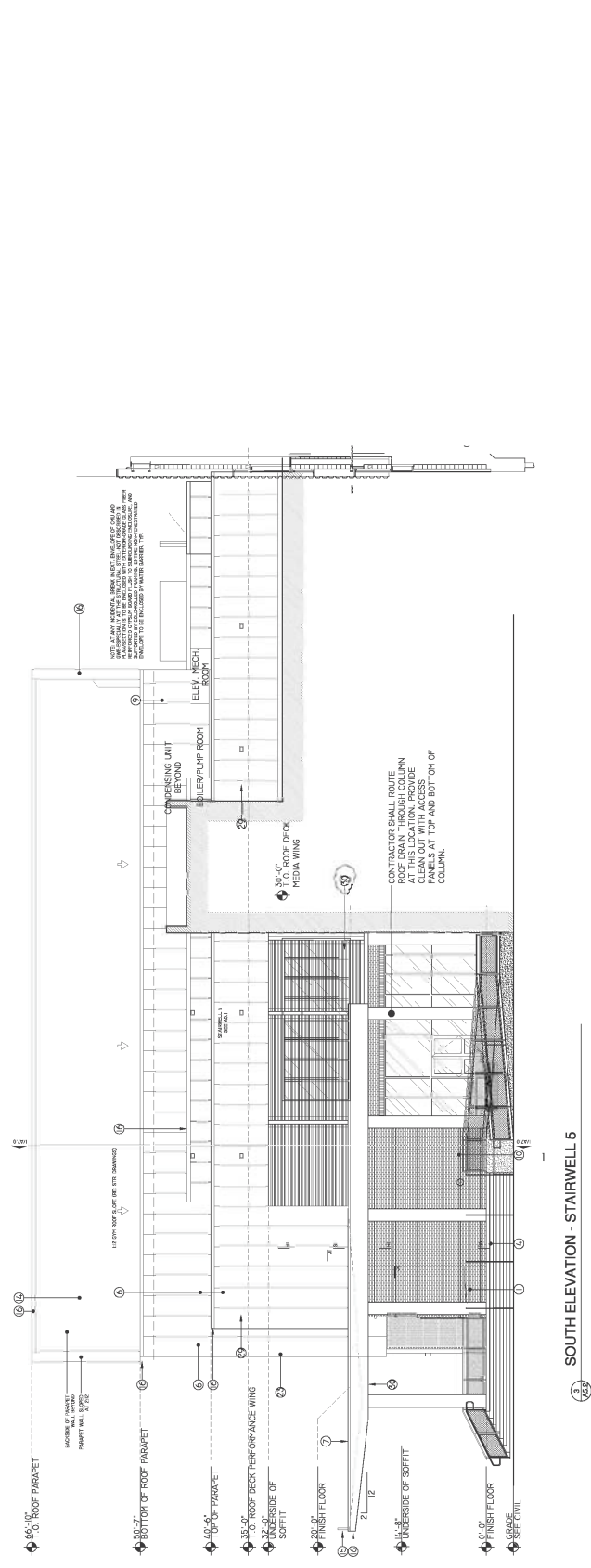


03.22.13

- FINISH LEGEND**
- 1 BRICK VENEER
  - 2 EXPOSED SCAM METAL ROOF
  - 3 NOT USED
  - 4 EXPOSED FOUNDATION
  - 5 ROOF LEADER
  - 6 VERTICAL INSULATED METAL PANEL
  - 7 METAL PANEL CANOPY
  - 8 SUN SHADE / LOUVER DEVICE
  - 9 PERFORATED CORRUGATED ALUMINUM SCREENING PANEL
  - 10 CLADDING UNIT
  - 11 DECORATIVE METAL RAILING SYSTEM, RE: SPECS
  - 12 EXTERIOR LIGHTING ELEMENT
  - 13 BITUMEN ROOFING SYSTEM
  - 14 METAL COPING
  - 15 Poured in place concrete planter
  - 16 CORRUGATED METAL PANEL SYSTEM (RE: SPECS)
  - 17 MECHANICAL LOUVER (RE: MECH. DWGS.)
  - 18 MECHANICAL LOUVER (RE: MECH. DWGS.)
  - 19 CERAMIC FRITTED SIGNAGE
  - 20 NOT USED
  - 21 COMPOSITE FENCING
  - 22 ROOF ACCESS LADDER (W/ LOCKING GATE)
  - 23 FINISHED CONCRETE COLUMN
  - 24 SANDED METAL COLORED BREAK METAL WRAP
  - 25 OVER LOW SCULPTER
  - 26 PANELIZED LOUVER SYSTEM



WEST ELEVATION @ LIBRARY & ADMINISTRATION



SOUTH ELEVATION - STAIRWELL 5

CONDITIONAL USE APPROVAL -  
 ZONING DOCKET # \_\_\_\_\_ WAIVERS \_\_\_\_\_ PROVISIONS \_\_\_\_\_  
 FINAL ACTION: \_\_\_\_\_ ADOPTED DATE: \_\_\_\_\_  
 ORDINANCE # \_\_\_\_\_  
 FINAL PLAN APPROVAL DATE: \_\_\_\_\_  
 EXECUTIVE DIRECTOR OF CITY PLANNING COMMISSION

A-5.2

ABRAMSON SCHOOL  
 5552 READ BLVD. - New Orleans, Louisiana 70127



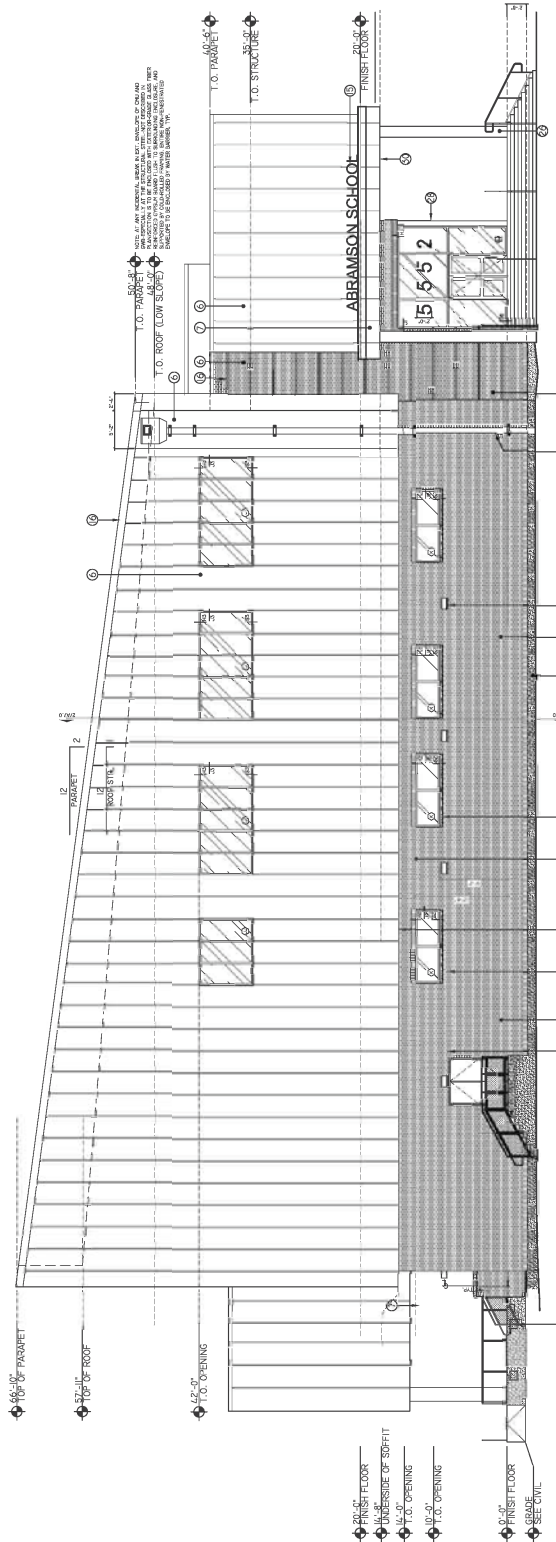
03.22.13

- FINISH LEGEND**
- ① BRICK VENEER
  - ② EXPOSED SCAM METAL ROOF
  - ③ NOT LISTED
  - ④ EXPOSED FOUNDATION
  - ⑤ ROOF LEADER
  - ⑥ VERTICAL INSULATED METAL PANEL
  - ⑦ METAL PANEL CANOPY
  - ⑧ SUN SHADE / LOUVER DEVICE
  - ⑨ PERFORATED CORRUGATED ALUMINUM SCREENING PANEL
  - ⑩ CLADDING UNIT
  - ⑪ OPERATIVE METAL RAILING SYSTEM, RE: SPECS
  - ⑫ EXTERIOR LIGHTING ELEMENT
  - ⑬ BITUMEN ROOFING SYSTEM
  - ⑭ METAL COPINGS
  - ⑮ POURED IN PLACE CONCRETE PLANTER
  - ⑯ CORRUGATED METAL PANEL SYSTEM (RE: SPECS)
  - ⑰ MECHANICAL LOUVER (RE: MECH. DWGS)
  - ⑱ BRASS LOUVER (RE: MECH. DWGS.)
  - ⑲ CERAMIC FRITTED SIGNAGE
  - ⑳ NOT LISTED
  - ㉑ COMPOSITE FENCING
  - ㉒ ROOF ACCESS LADDER (W/LOCKING GATE)
  - ㉓ ENAMELED COLUMN
  - ㉔ SANITIZED METAL WRAP
  - ㉕ BREAK METAL WRAP
  - ㉖ OVERFLOW SCUPPER
  - ㉗ PANELIZED LOUVER SYSTEM

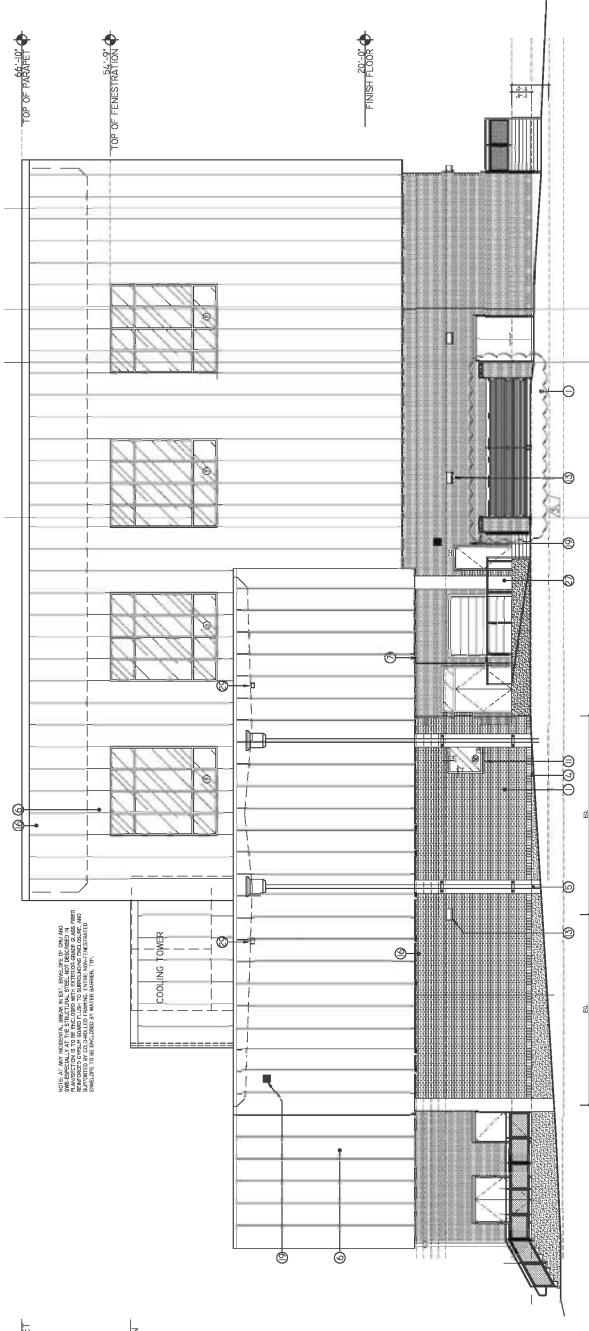
- CONDITIONAL USE APPROVAL -

ZONING DOCKET # \_\_\_\_\_ WAIVERS \_\_\_\_\_ PROVISIONS \_\_\_\_\_  
 FINAL ACTION: \_\_\_\_\_ ADOPTED DATE: \_\_\_\_\_  
 ORDINANCE # \_\_\_\_\_  
 FINAL PLAN APPROVAL DATE: \_\_\_\_\_  
 EXECUTIVE DIRECTOR OF CITY PLANNING COMMISSION

**A-5.3**



**WEST ELEVATION - PERFORMANCE WING**

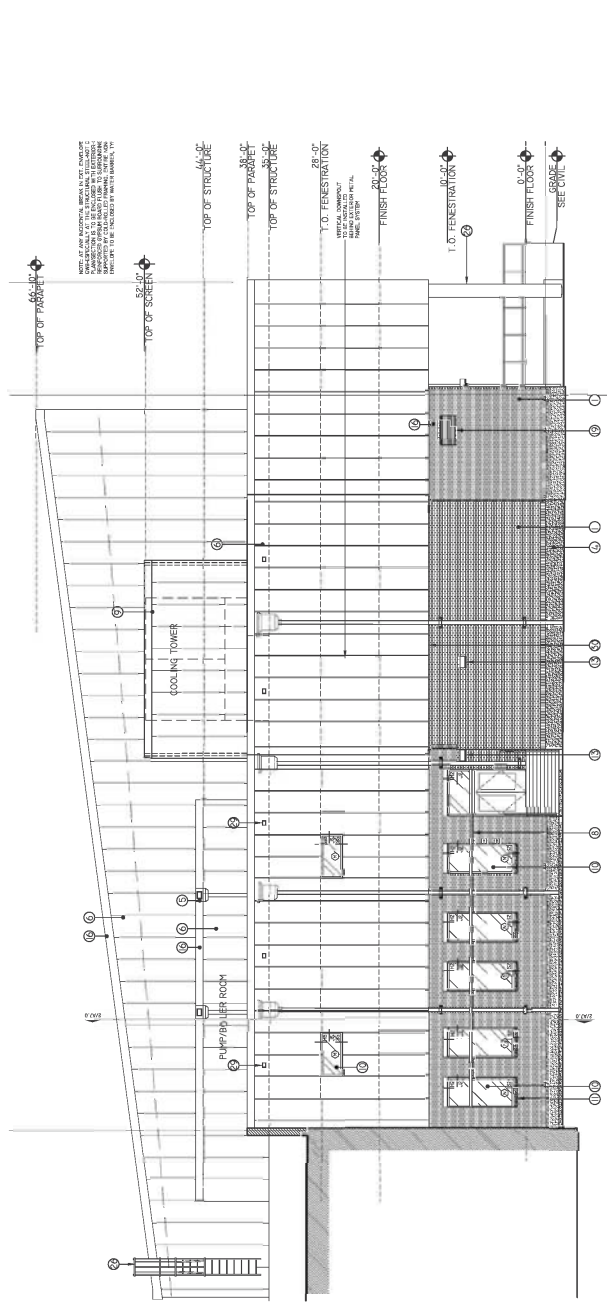


**NORTH ELEVATION - PERFORMANCE WING**

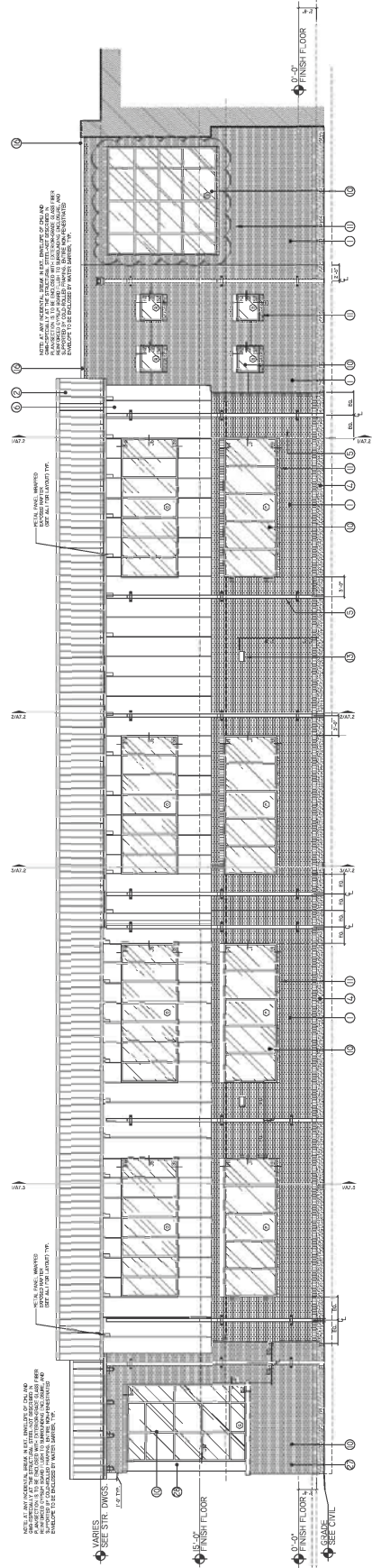
**ABRAMSON SCHOOL**  
 5552 READ BLVD. - New Orleans, Louisiana 70127

**FINISH LEGEND**

- 1 BRICK VENEER
- 2 EXPOSED SCAM METAL ROOF
- 3 NOT LISTED
- 4 EXPOSED FOUNDATION
- 5 ROOF LEADER
- 6 VERTICAL INSULATED METAL PANEL
- 7 METAL PANEL CANOPY
- 8 SUN SHADE / LOUVER DEVICE
- 9 PERFORATED CORRUGATED ALUMINUM SCREENING PANEL
- 10 GLAZING JOINT
- 11 POLYURETHANE GLAZING
- 12 DECORATIVE METAL RAILING SYSTEM, RE: SPECS
- 13 EXTERIOR LIGHTING ELEMENT
- 14 BITUMEN ROOFING SYSTEM
- 15 METAL COPING
- 16 Poured in place concrete planter
- 17 CORRUGATED METAL PANEL SYSTEM (RESPECS)
- 18 MECHANICAL LOUVER (RE: MECH. DWGS.)
- 19 BONDED LOUVER (RE: MECH. DWGS.)
- 20 MECHANICAL LOUVER (RE: MECH. DWGS.)
- 21 CERAMIC FRITTED SIGNAGE
- 22 NOT LISTED
- 23 COMPOSITE FENCING
- 24 ROOF ACCESS LADDER (W/LOCKING GATE)
- 25 METAL FINISHED COLUMN
- 26 SANDED METAL CLIP
- 27 BREAK METAL WRAP
- 28 OVER LOW SCULPTER
- 29 PANELIZED LOUVER SYSTEM



1 EAST ELEVATION - PERFORMANCE WING



2 NORTH ELEVATION @ CLASSROOM WING II

- CONDITIONAL USE APPROVAL -

ZONING DOCKET #	_____	WAVES	_____	PROVIDES
FINAL ACTION	_____	ADOPTED DATE	_____	
ORDINANCE #	_____	ADOPTED DATE	_____	
FINAL PLAN APPROVAL DATE:				
EXECUTIVE DIRECTOR OF CITY PLANNING COMMISSION:				

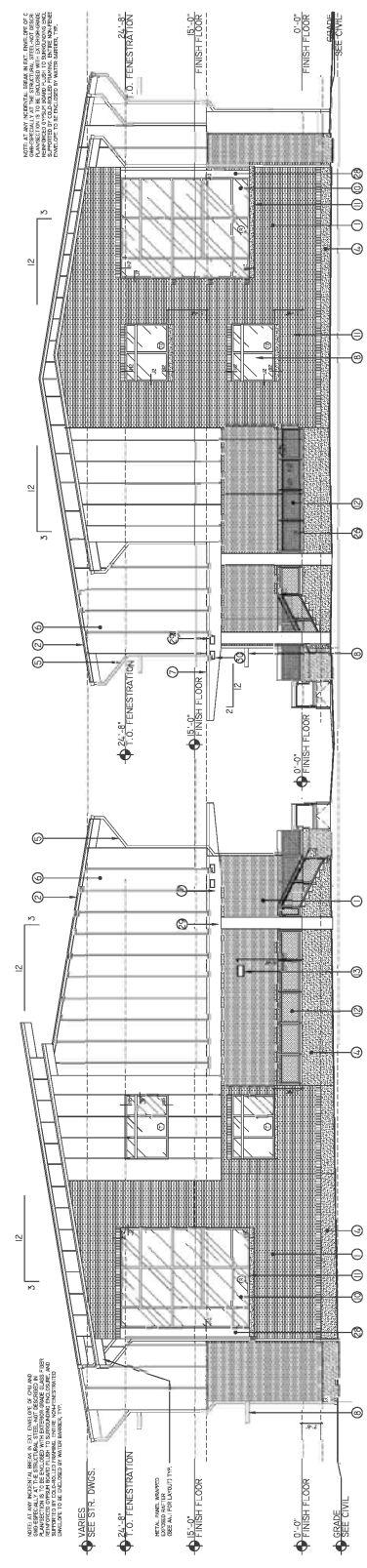
A-5.4

ABRAMSON SCHOOL  
5552 READ BLVD. - New Orleans, Louisiana 70127

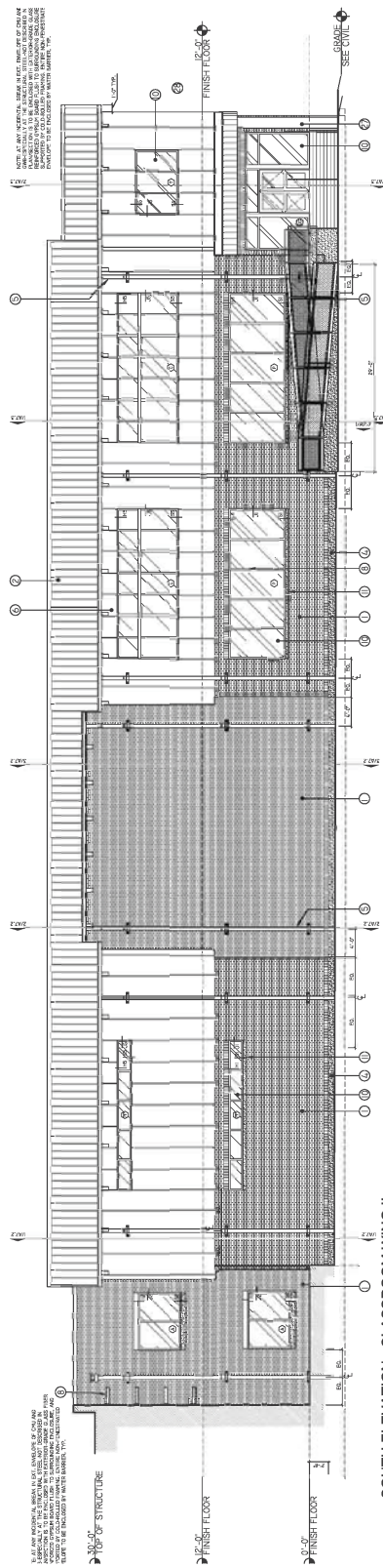


03.22.13

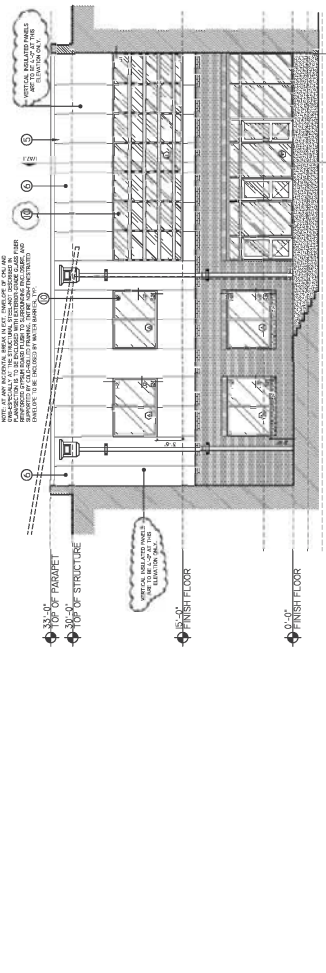
FINISH LEGEND	
1	BRICK VENEER
2	EXPOSED CONCRETE
3	EXPOSED METAL ROOF
4	NOT LISTED
5	ROOF LEADER
6	ROOF INSULATED METAL PANEL
7	METAL PANEL CANOPY
8	SUN SHADE / LOUVER DEVICE
9	PERFORATED CORRUGATED ALUMINUM SCREENING PANEL
10	GLAZING JOINT
11	DECORATIVE METAL RAILING SYSTEM, RE: SPECS
12	EXTERIOR LIGHTING ELEMENT
13	BITUMEN ROOFING SYSTEM
14	METAL COPING
15	POURED IN PLACE CONCRETE PLANTER
16	CORRUGATED METAL PANEL SYSTEM (RE: SPECS)
17	MECHANICAL LOUVER (RE: MECH. DWGS.)
18	MECHANICAL LOUVER (RE: MECH. DWGS.)
19	MECHANICAL LOUVER (RE: MECH. DWGS.)
20	CERAMIC FRITTED SIGNAGE
21	NOT LISTED
22	COMPOSITE FENCING
23	ROOF ACCESS LADDER (W/LOCKING GATE)
24	PAINTED FINISHED COLUMN
25	BREAK METAL WRAP
26	BRICK VENEER
27	OVERLEAF SCAFFER
28	PANELIZED LOUVER SYSTEM



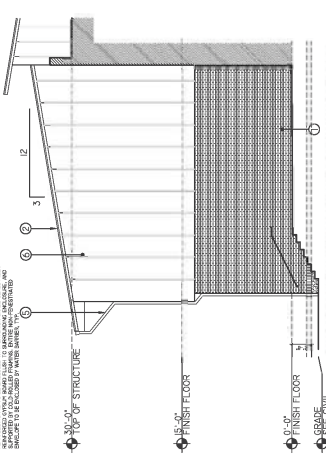
101 EAST ELEVATION - CLASSROOM WING I & II



102 SOUTH ELEVATION - CLASSROOM WING II



103 EAST ELEVATION - MAIN CORRIDOR



104 WEST ELEVATION - CLASSROOM WING I

- CONDITIONAL USE APPROVAL -	
ZONING DOCKET #	_____
FINAL ACTION	_____
ORDINANCE #	_____
ADOPTED DATE	_____
FINAL PLAN APPROVAL DATE	_____
EXECUTIVE DIRECTOR OF CITY PLANNING COMMISSION	_____

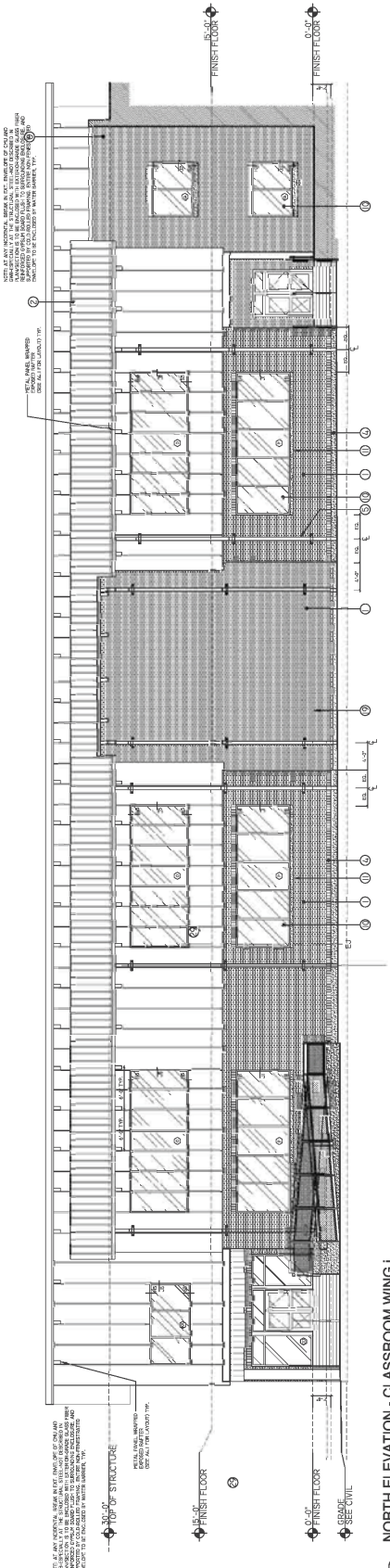
A-5.5

ABRAMSON SCHOOL  
5552 READ BLVD. - New Orleans, Louisiana 70127



03.22.13

- FINISH LEGEND**
- ① BRICK VENEER
  - ② EXPOSING SEAM METAL ROOF
  - ③ NOT LISTED
  - ④ EXPOSED FOUNDATION
  - ⑤ ROOF LEADER
  - ⑥ VERTICAL INSULATED METAL PANEL
  - ⑦ METAL PANEL CANOPY
  - ⑧ SUN SHADE / LOUVER DEVICE
  - ⑨ PERFORATED CORRUGATED ALUMINUM SCREENING PANEL
  - ⑩ GLAZING JOINT
  - ⑪ DECORATIVE METAL RAILING SYSTEM, RE: SPECS
  - ⑫ EXTERIOR LIGHTING ELEMENT
  - ⑬ BITUMEN ROOFING SYSTEM
  - ⑭ METAL COPING
  - ⑮ POURED IN PLACE CONCRETE PLANTER
  - ⑯ CORRUGATED METAL PANEL SYSTEM (RE: SPECS)
  - ⑰ MECHANICAL LOUVER (RE: MECH. DWGS)
  - ⑱ EXPOSED CONCRETE (RE: MECH. DWGS.)
  - ⑲ CERAMIC TITLED SIGNAGE
  - ⑳ NOT LISTED
  - ㉑ COMPOSITE FENCING
  - ㉒ ROOF ACCESS LADDER (W/ LOCKING GATE)
  - ㉓ FINISHED CONCRETE
  - ㉔ PANELLED METAL CURTAIN
  - ㉕ BREAK METAL WRAP
  - ㉖ OVERFLOW SCUPPER
  - ㉗ PANELIZED LOUVER SYSTEM



**NORTH ELEVATION - CLASSROOM WING i**

- CONDITIONAL USE APPROVAL -  
 ZONING DOCKET # \_\_\_\_\_ W/AVERS \_\_\_\_\_ PROVISIONS \_\_\_\_\_  
 FINAL ACTION \_\_\_\_\_ ADOPTED DATE: \_\_\_\_\_  
 ORDINANCE # \_\_\_\_\_  
 FINAL PLAN APPROVAL DATE: \_\_\_\_\_  
 EXECUTIVE DIRECTOR OF CITY PLANNING COMMISSION \_\_\_\_\_

**A-5.6**

**ABRAMSON SCHOOL**  
 5552 READ BLVD. - New Orleans, Louisiana 70127



03.22.13



Abramson School Project Narrative:  
02.22.13

The Abramson High School is an approximately 107,000sf RSD high school adapted from the Edward Livingston High School, itself an elaboration on the prototype Parkview Elementary School—now completed at 4617 Mirabeau Ave—set for a site at 5552 Reed Blvd. The building will have a steel structural frame with CMU interior walls; the lower story is clad in brick masonry, with the upper enclosed by vertical seam, foamed-core, tongue-and groove metal panels. The roofing is modified bitumen on flat roofs, and kynar-clad standing seam on inclined roofs. The structure houses over 27 classrooms, a full sized gymnasium with stage, a black-box performing center, substantial cafeteria and a media center. Adaptations from Parkview include the expansion of the gymnasium via the overhang at the north, general reorganization of space in the athletics and administration areas, and its proposed elevation some 5 to 6 feet more above grade relatively than Parkview.

The plot was the site of a previous Abramson school, which was damaged by Katrina, and current other currently operating educational units. The site plan provides for integrating the school and its paring into the existing campus, all drawing from two streets from Reed Blvd.

Sidewalks will be as per the Department of Public Work's provisions. Service courts and trash areas will be screened from the public. There exists no space for trees between the property line, the sidewalk, and the street.

We have attached several rendering packets, using our original Parkview model and our updated Livingston models— all materials are the same, and in the same location, as will be used in Abramson as in the latter; the former shows our initial colors scheme for the project on the unmodified Parkview model; we will have our first community meeting on February 28th, and it will help guide us in our differentiation of color at Abramson.

Attachments:

Parking Calculations

A-1.4 Survey

A-1.5 Overall Site Plan

A-1.6 Enlarged Site Plan

A- 2.0 First Floor

A-2.1 Second Floor

A-5.1 Exterior Elevations

A-5.2 Exterior Elevations

A-5.3 Exterior Elevations

A-5.4 Exterior Elevations

A-5.5 Exterior Elevations

A-5.6 Exterior Elevations

L-1 – Landscape Plan

Rendering Packet 1

Rendering Packet 2

Rendering Packet 3

ABRAMSON PARKING CALCULATIONS

3 per	1 Classroom	31 Classrooms	=	93 spots
1 per	8 seats in Gym	480 Fixed seats	=	60 spots
		Total		153 spots

As per table 15.A in Section 15.2 of the NO CZO





○ FINAL ENLARGED SITE PLAN  
1" = 70'-0"

# A-1.5

ABRAMSON SCHOOL  
5552 READ BLVD. - New Orleans, Louisiana 70127

