

LUSHER ELEMENTARY SCHOOL REFURBISHMENT

7315 Willow Street

DESIGN ADVISORY COMMITTEE SUBMISSION

Meyer Engineers, LTD.
ENGINEER AND ARCHITECT

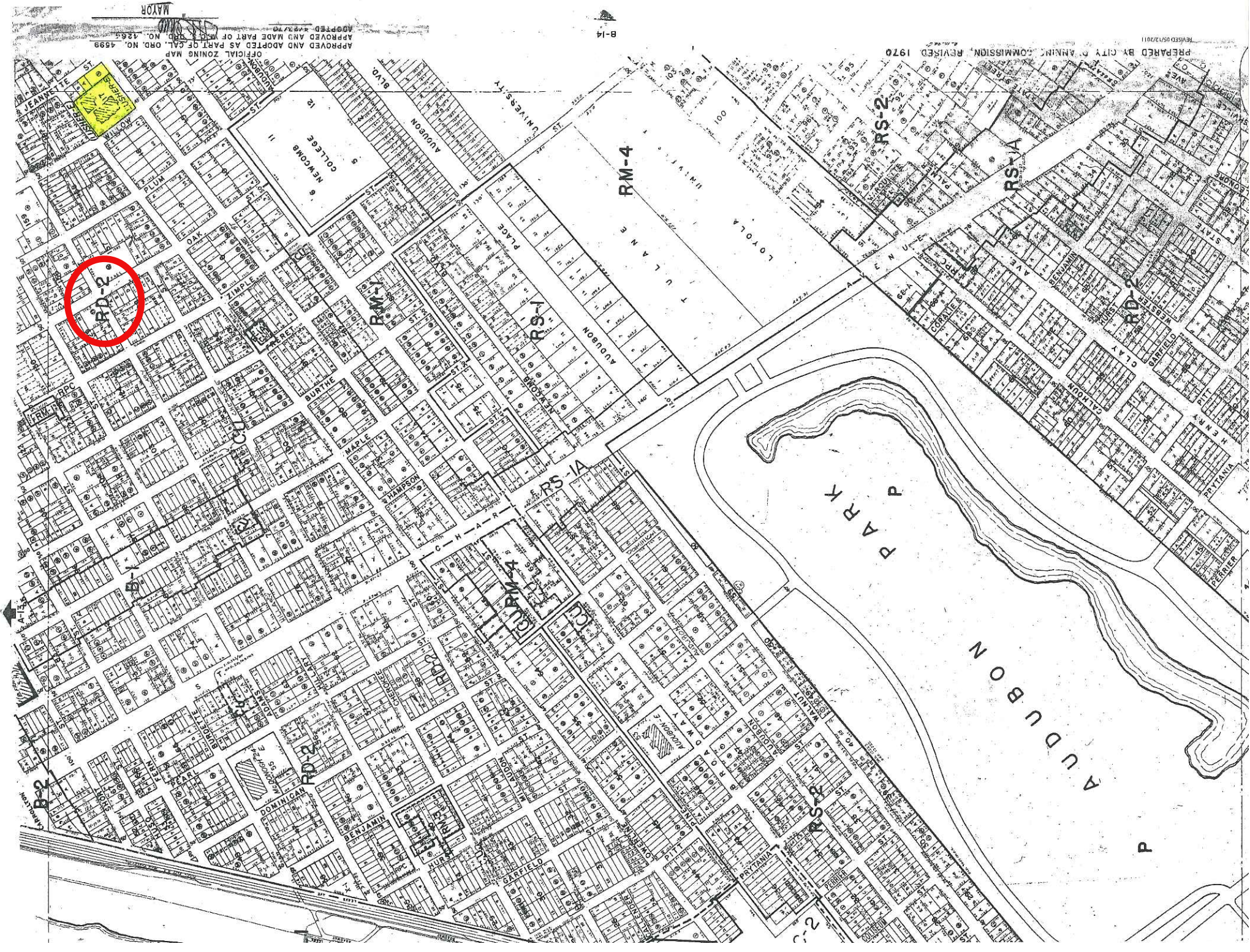


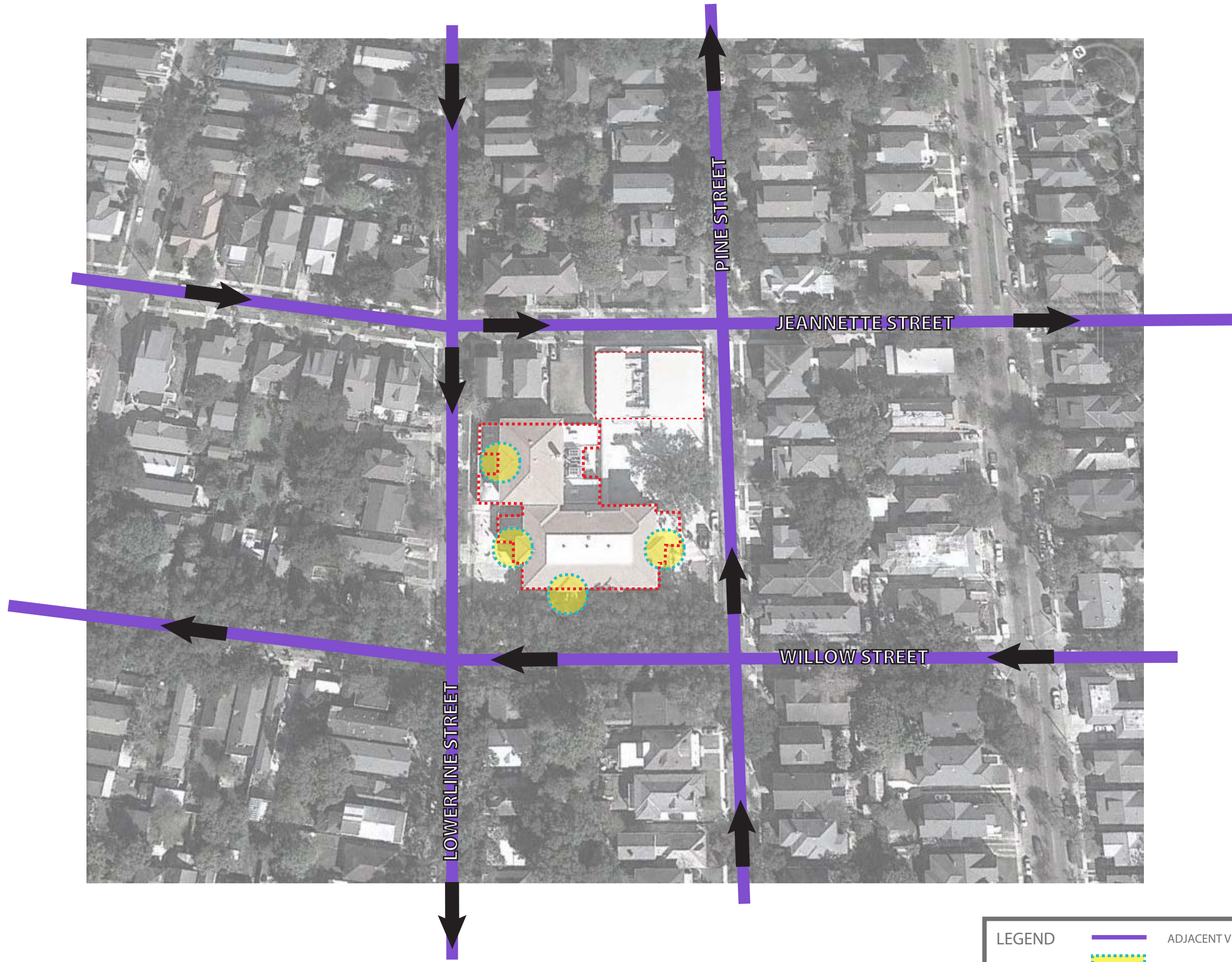


BIRD'S EYE

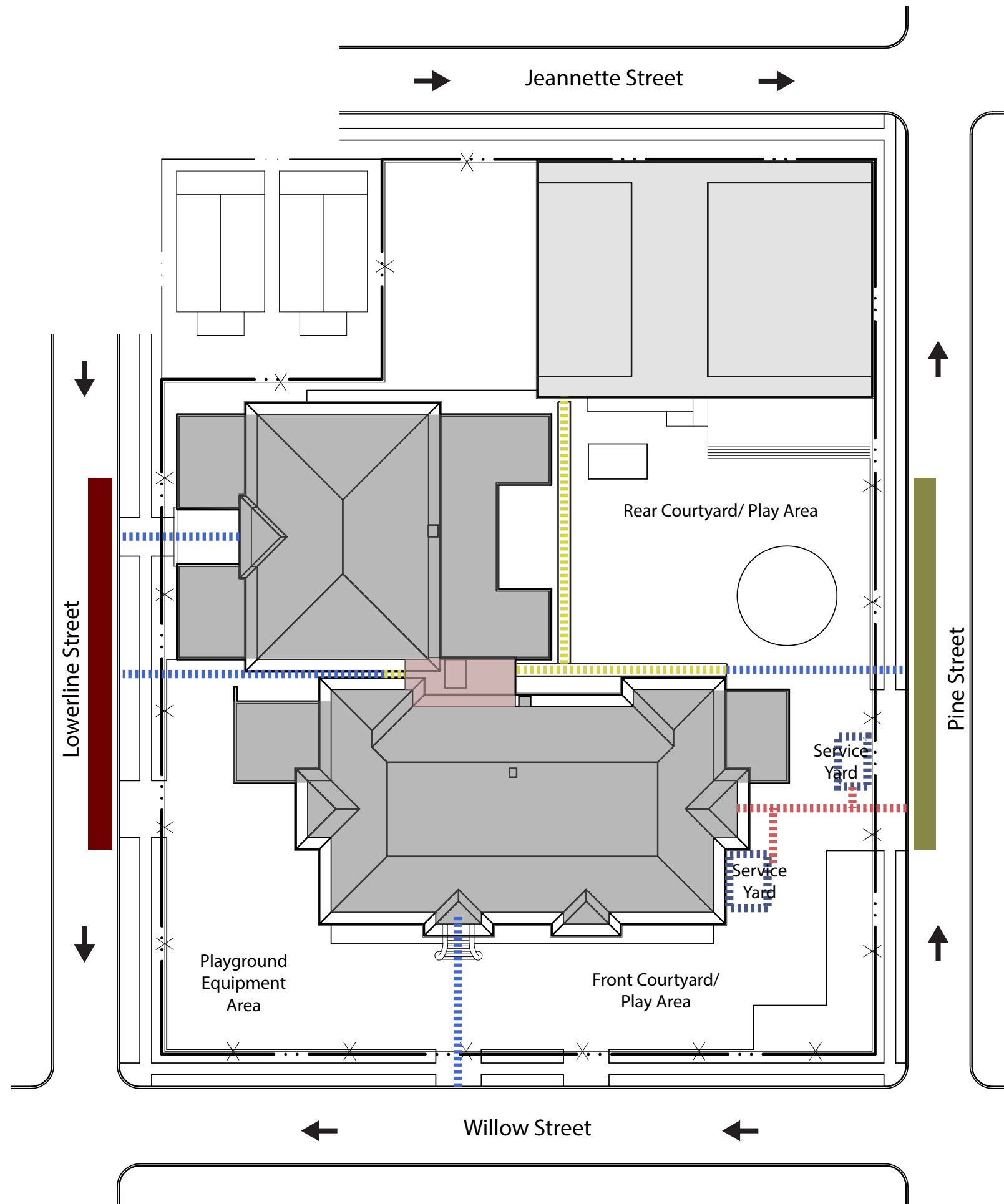


BIRD'S EYE





LEGEND	
	ADJACENT VEHICULAR ROUTES
	SCHOOL ENTRANCES
	BUILDING PERIMETER
	N.I.C. BUILDING PERIMETER



LEGEND

N

	Student Path
	Covered Student Path
	Service/Utility Path
	Service Yard
	Student Drop-Off
	Student Pick-Up
	Existing Campus Buildings
	New Elevator Addition

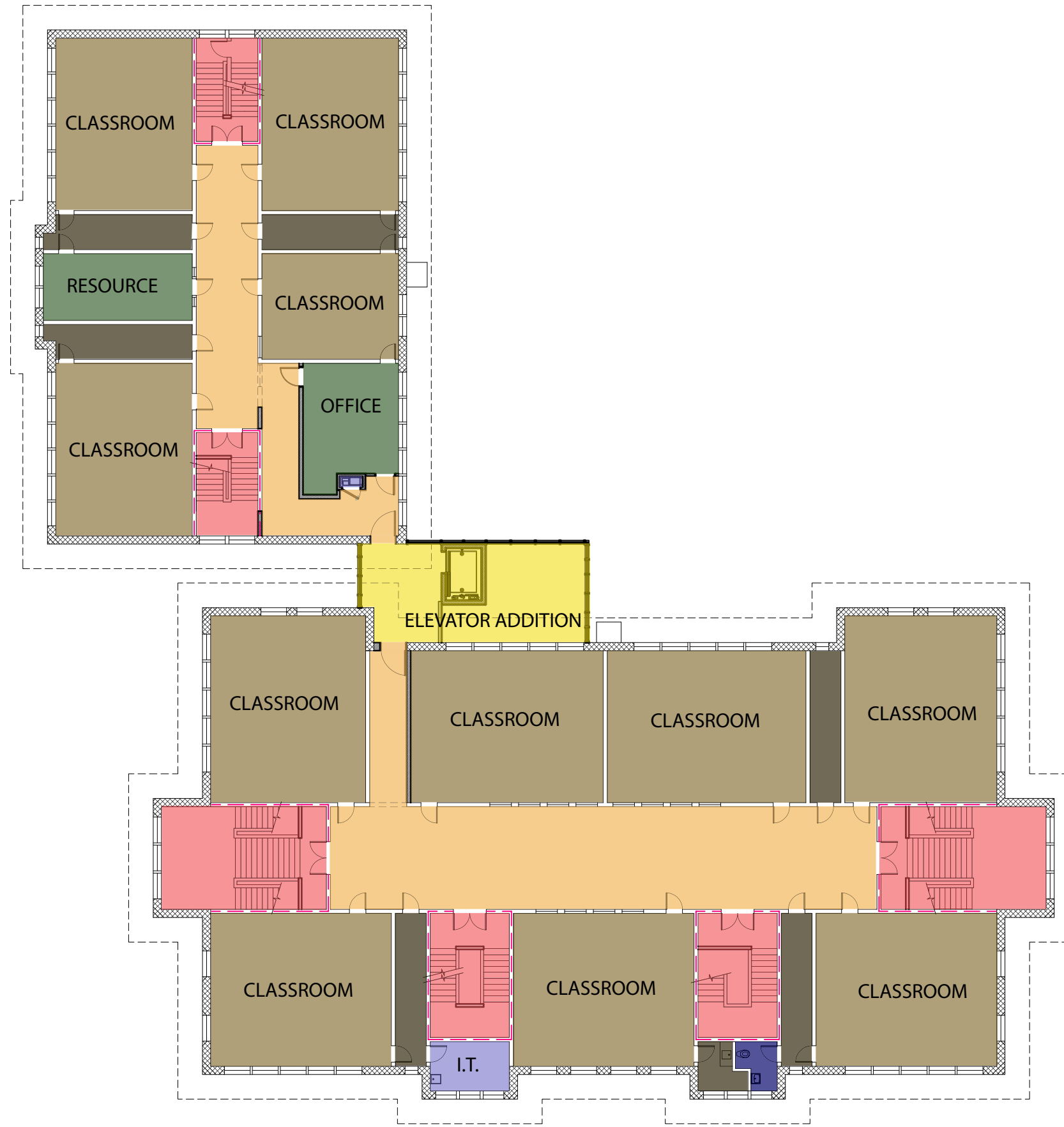
SITE PLAN
Scale: NTS



FIRST FLOOR PLAN
Scale: NTS



SECOND FLOOR PLAN
Scale: NTS



THIRD FLOOR PLAN
Scale: NTS



WILLOW STREET ELEVATION
Scale: NTS



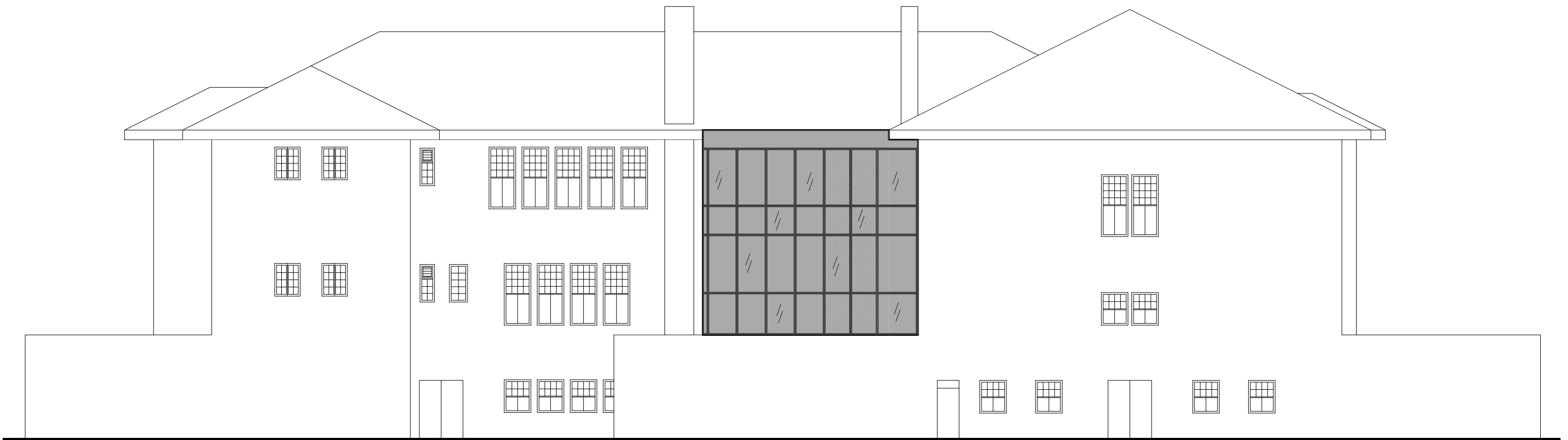
(Shaded areas indicate proposed additions)

LOWERLINE STREET ELEVATION
Scale: NTS



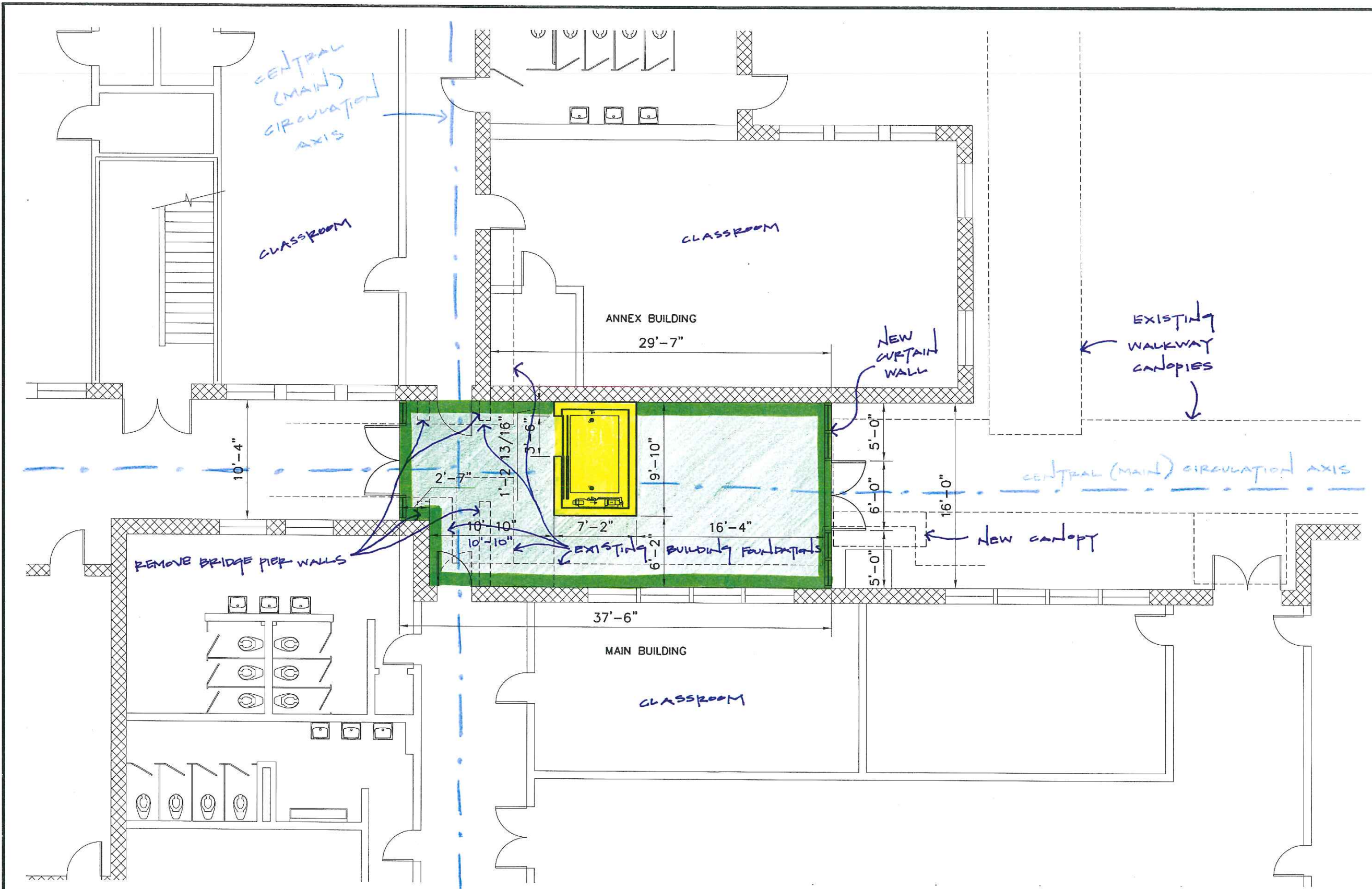
(Shaded areas indicate proposed additions)

PINE STREET ELEVATION
Scale: NTS



(Shaded areas indicate proposed additions)

ELEVATION FROM REAR COURTYARD
Scale: NTS



1 Elevator - Option D (Floor 1)
 1/8" = 1'-0"

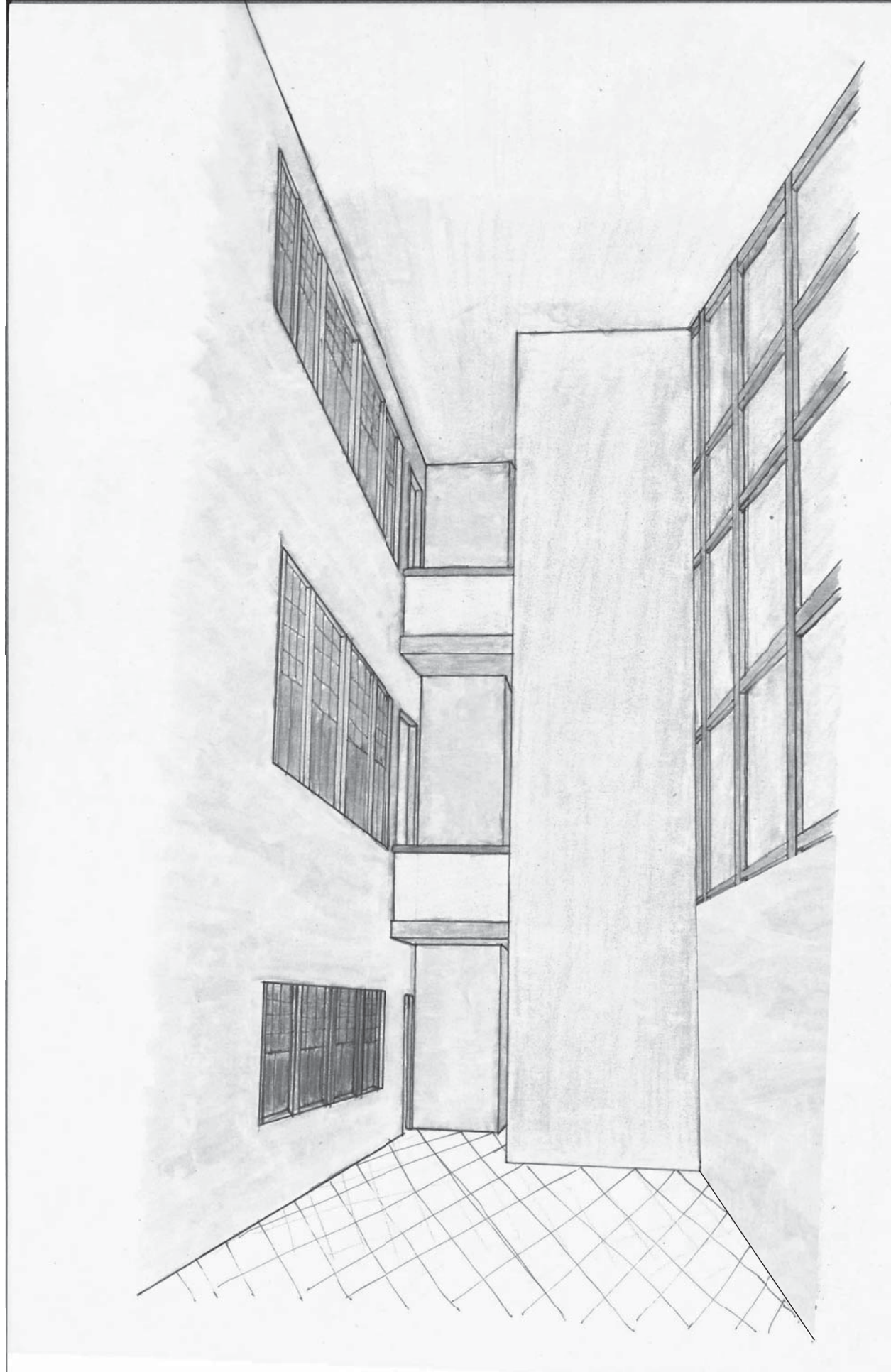
Project no.	20-1237
drawn	JLR
checked	JLP
date	02.14.13
revised	

MEYER ENGINEERS, LTD.
ENGINEER & ARCHITECT

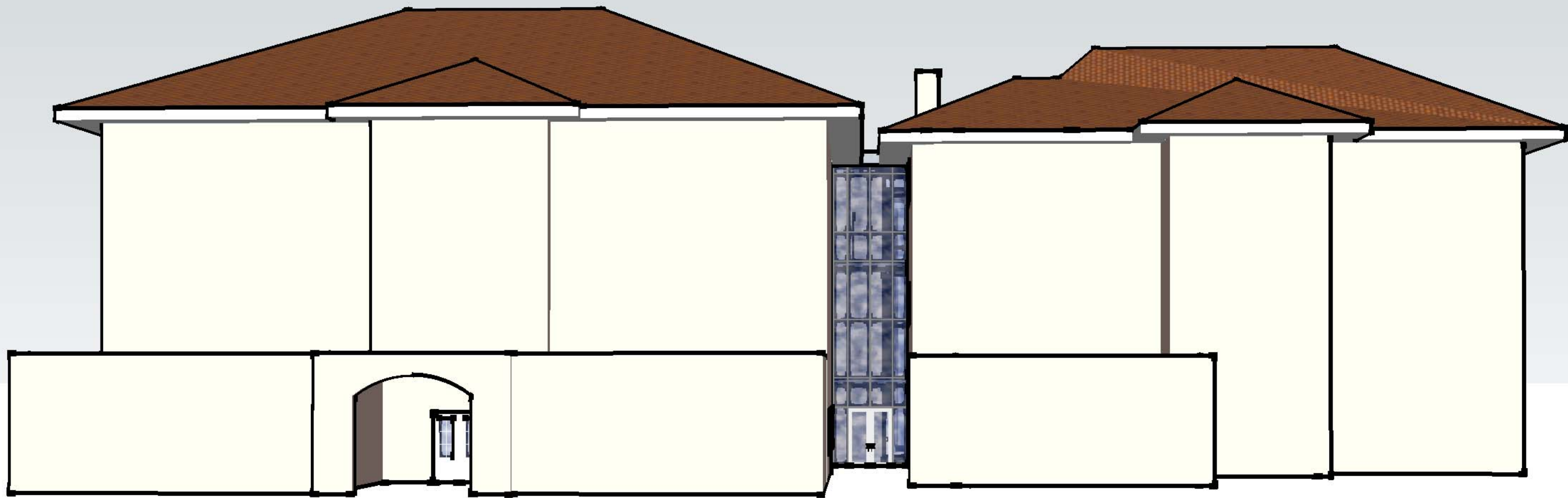
POSSIBLE ELEVATOR LOCATIONS
LUSHER BRIDGE ES - REFURB
ROBERT MILLS LUSHER ELEMENTARY
ORLEANS PARISH SCHOOL BOARD - OWNER

sheet no.
ELEV-1
 of 11 sheets
 FILE NAME.dwg

FIRST FLOOR ADDITION CONCEPT SKETCH
 Scale: NTS



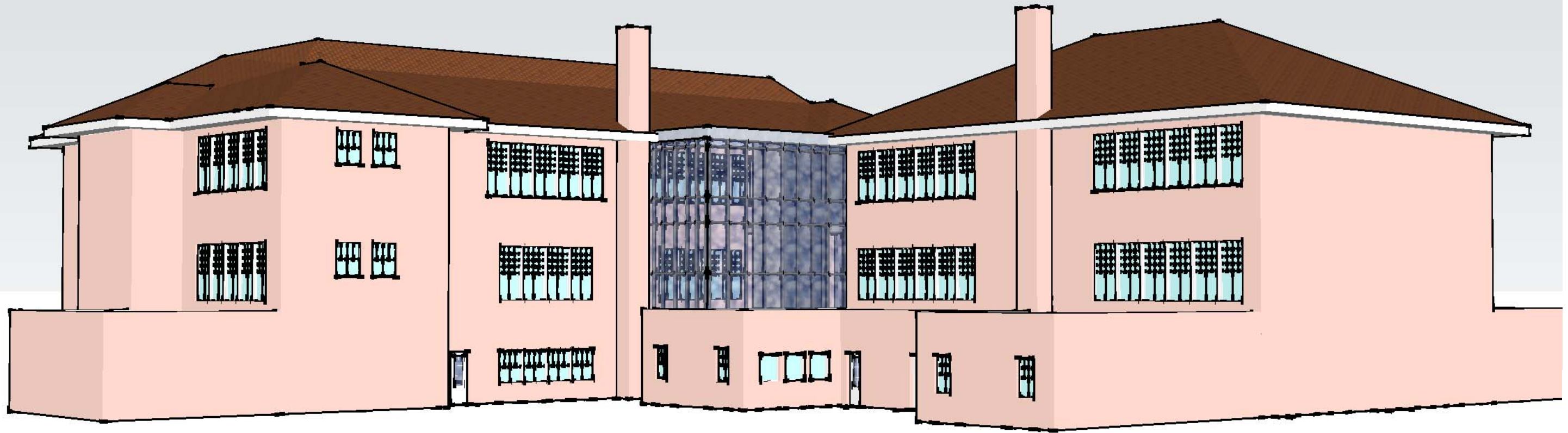
ADDITION INTERIOR VIEW SKETCH
Scale: NTS



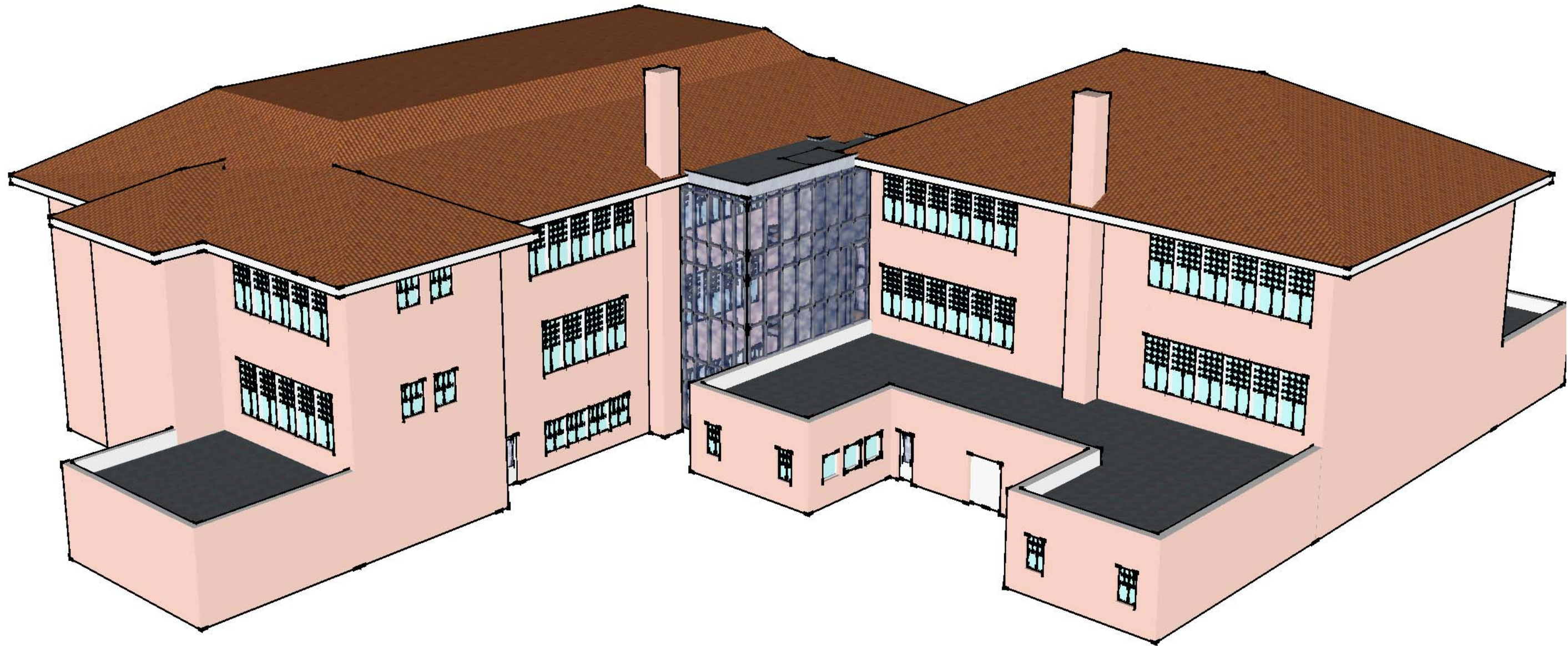
LOWERLINE STREET ELEVATION
Scale: NTS



PINE STREET ELEVATION
Scale: NTS



EXTERIOR VIEW FROM REAR COURTYARD
Scale: NTS



BIRD'S EYE VIEW FROM REAR
Scale: NTS