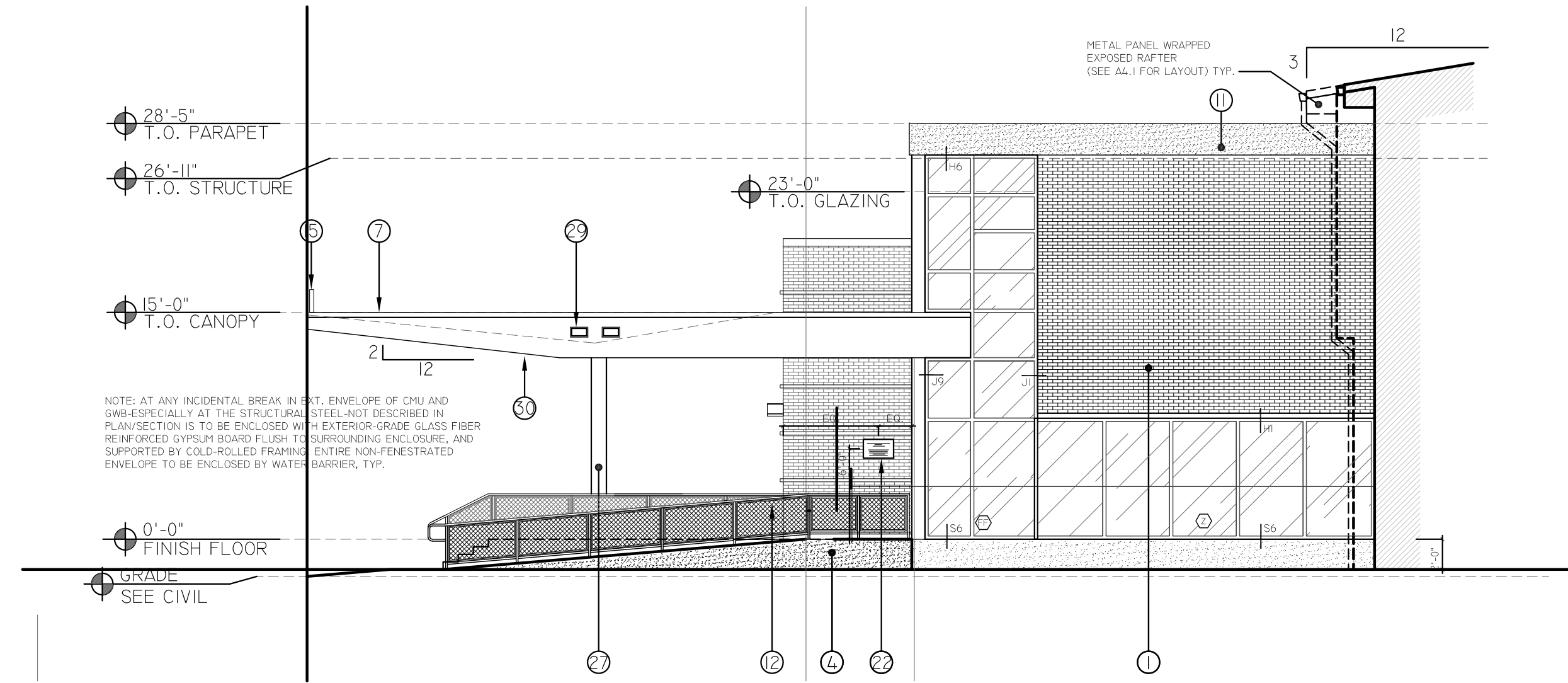


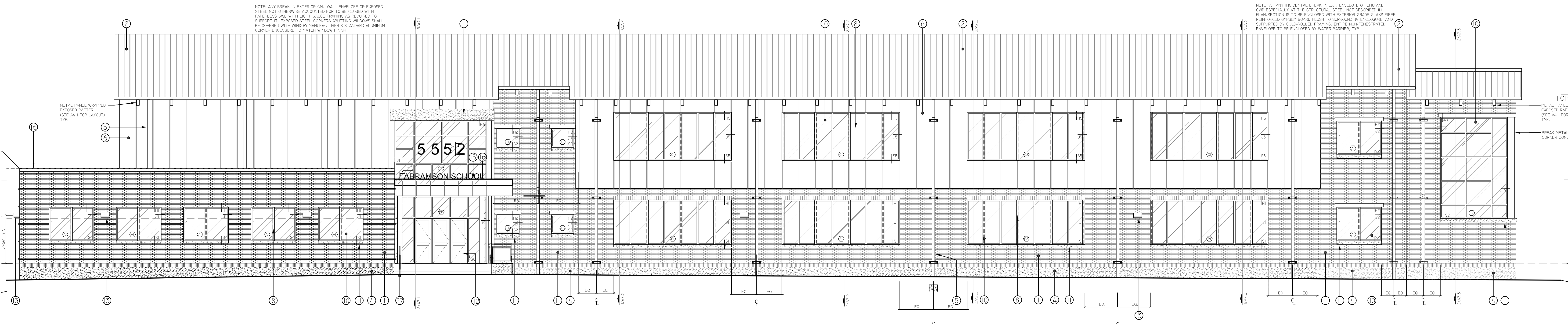
FINISH LEGEND

- ① BRICK VENEER
- ② STANDING SEAM METAL ROOF
- ③ NOT USED
- ④ EXPOSED FOUNDATION
- ⑤ ROOF LEADER
- ⑥ VERTICAL INSULATED METAL PANEL SYSTEM (RE: SPECS)
- ⑦ METAL PANEL CANOPY
- ⑧ SUN SHADE / LOUVRE DEVICE
- ⑨ PERFORATED CORRUGATED ALUMINUM SCREENING PANEL
- ⑩ GLAZING UNIT
- ⑪ CAST STONE SILL
- ⑫ DECORATIVE METAL RAILING SYSTEM, RE: SPECS
- ⑬ EXTERIOR LIGHTING ELEMENT
- ⑭ BITUMEN ROOFING SYSTEM
- ⑮ EXTRUDED METAL SIGNAGE
- ⑯ METAL COPING
- ⑰ POURED IN PLACE CONCRETE PLANTER
- ⑱ CORRUGATED METAL PANEL SYSTEM (RE: SPECS)
- ⑲ MECHANICAL LOUVER (RE: MECH. DWGS)
- ⑳ EXHAUST LOUVER (RE: MECH. DWGS.)
- ㉑ DEDICATION PLAQUE, RE: A9.16
- ㉒ CERAMIC FRITTAQUE SIGNAGE
- ㉓ NOT USED
- ㉔ COMPOSITE FENCING
- ㉕ ROOF ACCESS LADDER (W/LOCKING GATE)
- ㉖ CONCRETE ENCASED COLUMN
- ㉗ COLUMN ENCASED IN COLUMN WRAP
- ㉘ BREAK METAL WRAP
- ㉙ OVERFLOW SCUPPER
- ㉚ PANELIZED LOUVRE SYSTEM



EAST ELEVATION @ ADMINISTRATION

3
A5.1



PARTIAL SOUTH ELEVATION - ADMIN & CLASSROOM WING I

1
A5.1

- CONDITIONAL USE APPROVAL -

ZONING DOCKET # _____

FINAL ACTION: _____ WAIVERS _____ PROVISOs _____

ORDINANCE # _____ ADOPTED DATE: _____

FINAL PLAN APPROVAL DATE: _____

EXECUTIVE DIRECTOR OF CITY PLANNING COMMISSION

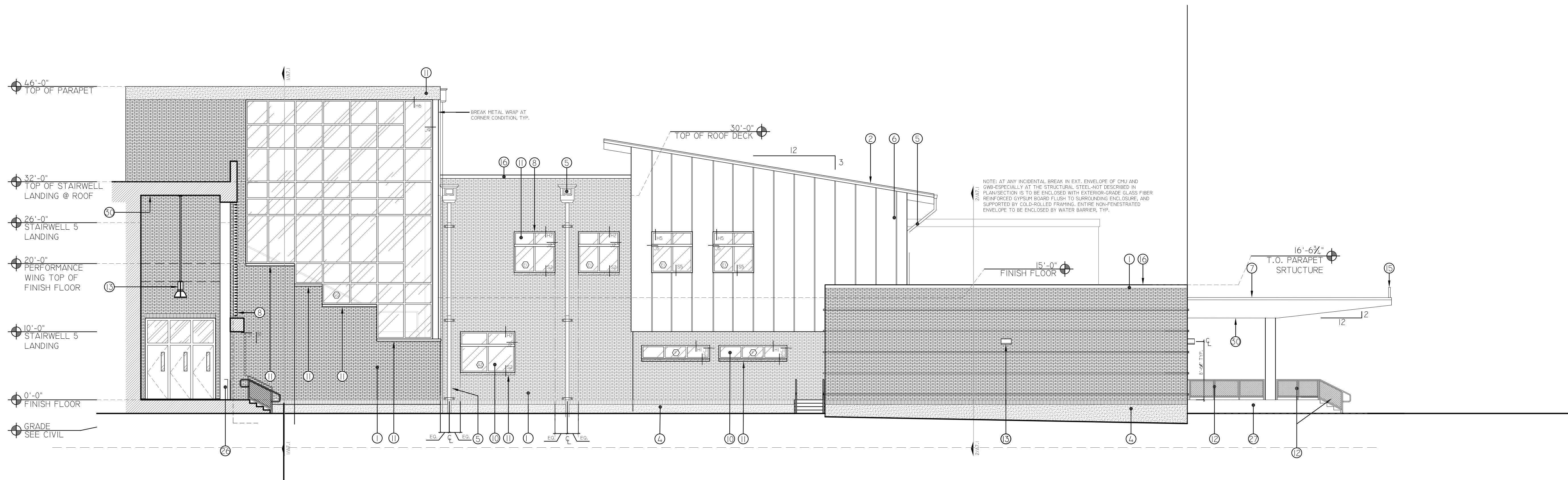
A-5.1

ABRAMSON SCHOOL
5552 READ BLVD. - New Orleans, Louisiana 70127

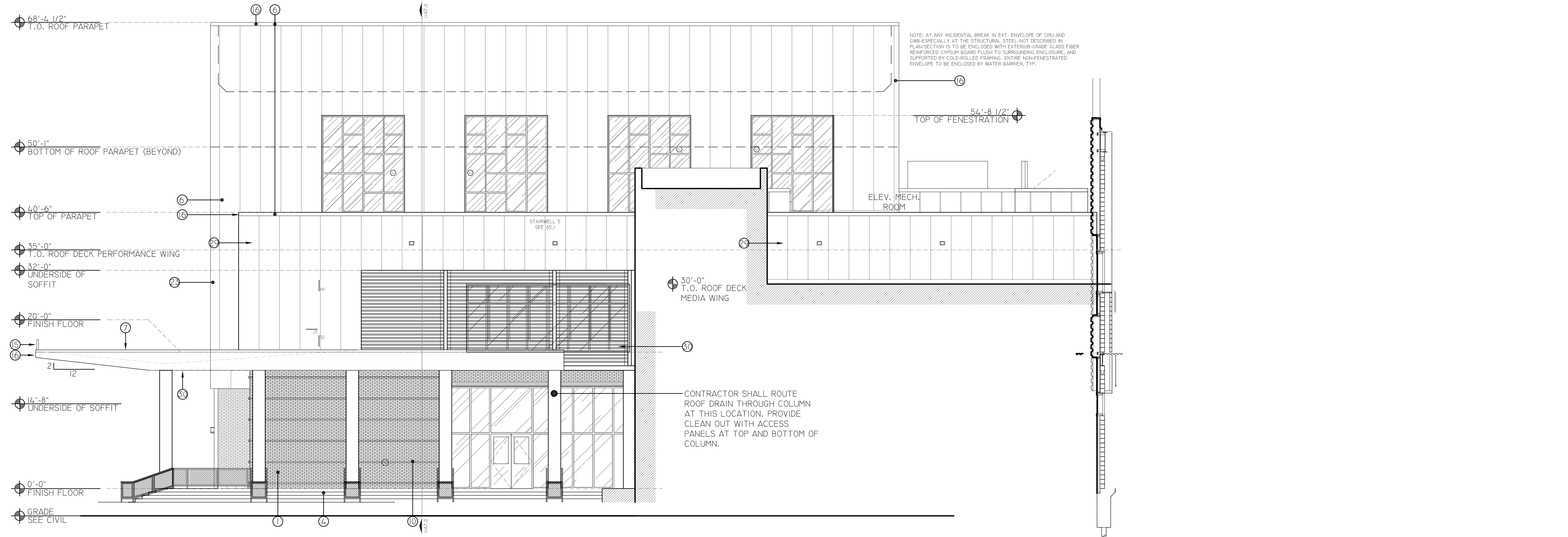


FINISH LEGEND

- ① BRICK VENEER
- ② STANDING SEAM METAL ROOF
- ③ NOT USED
- ④ EXPOSED FOUNDATION
- ⑤ ROOF LEADER
- ⑥ VERTICAL INSULATED METAL PANEL SYSTEM (RE: SPECS)
- ⑦ METAL PANEL CANOPY
- ⑧ SUN SHADE / LOUVRE DEVICE
- ⑨ PERFORATED CORRUGATED ALUMINUM SCREENING PANEL
- ⑩ GLAZING UNIT
- ⑪ CAST STONE SILL
- ⑫ DECORATIVE METAL RAILING SYSTEM, RE: SPECS
- ⑬ EXTERIOR LIGHTING ELEMENT
- ⑭ BITUMEN ROOFING SYSTEM
- ⑮ EXTRUDED METAL SIGNAGE
- ⑯ METAL COPING
- ⑰ Poured in place concrete planter
- ⑱ CORRUGATED METAL PANEL SYSTEM (RE: SPECS)
- ⑲ MECHANICAL LOUVER (RE: MECH. DWGS)
- ⑳ EXHAUST LOUVER (RE: MECH. DWGS.)
- ㉑ DEDICATION PLAQUE, RE: A9.16
- ㉒ CERAMIC FRITTED SIGNAGE
- ㉓ NOT USED
- ㉔ COMPOSITE FENCING
- ㉕ ROOF ACCESS LADDER (W/LOCKING GATE)
- ㉖ CONCRETE ENCASED COLUMN
- ㉗ COLUMN ENCASED IN COLUMN WRAP
- ㉘ BREAK METAL WRAP
- ㉙ OVERFLOW SCUPPER
- ㉚ PANELIZED LOUVRE SYSTEM



1 WEST ELEVATION @ LIBRARY & ADMINISTRATION



3 SOUTH ELEVATION - STAIRWELL 5

- CONDITIONAL USE APPROVAL -

ZONING DOCKET # _____

FINAL ACTION: _____ WAIVERS _____ PROVISOs _____

ORDINANCE # _____ ADOPTED DATE: _____

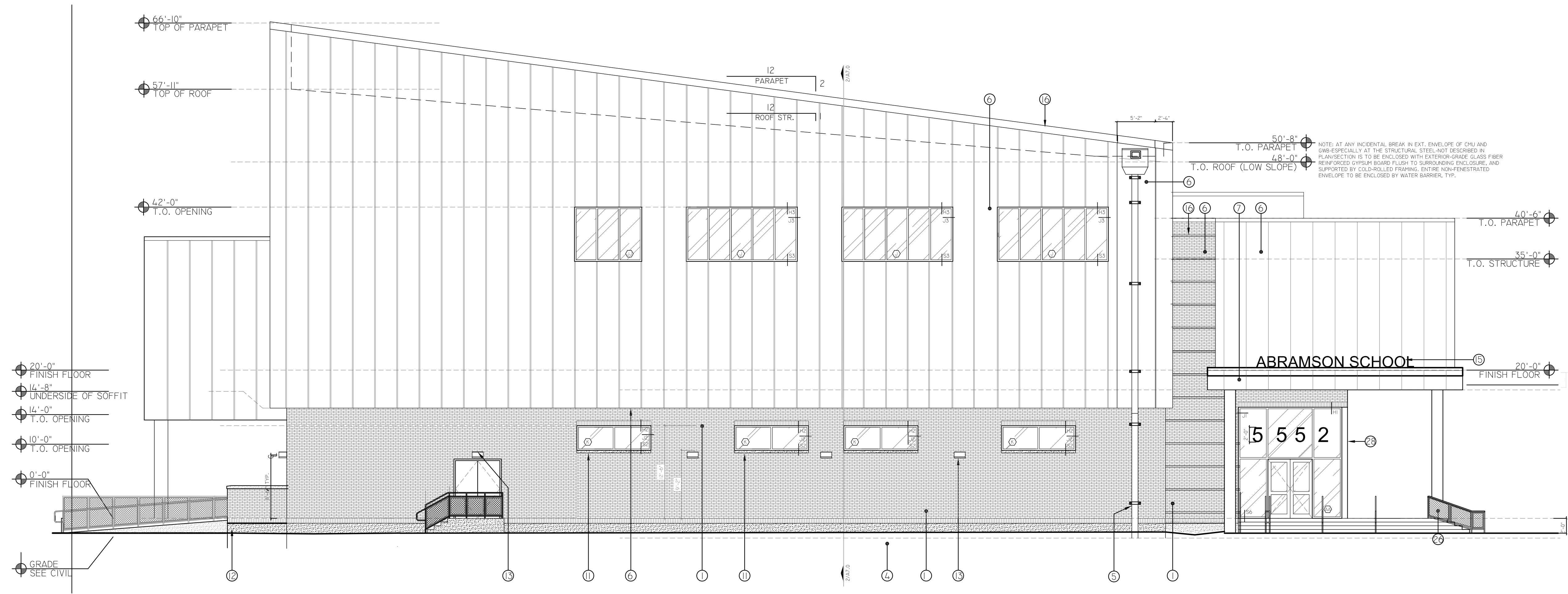
FINAL PLAN APPROVAL DATE: _____

EXECUTIVE DIRECTOR OF CITY PLANNING COMMISSION

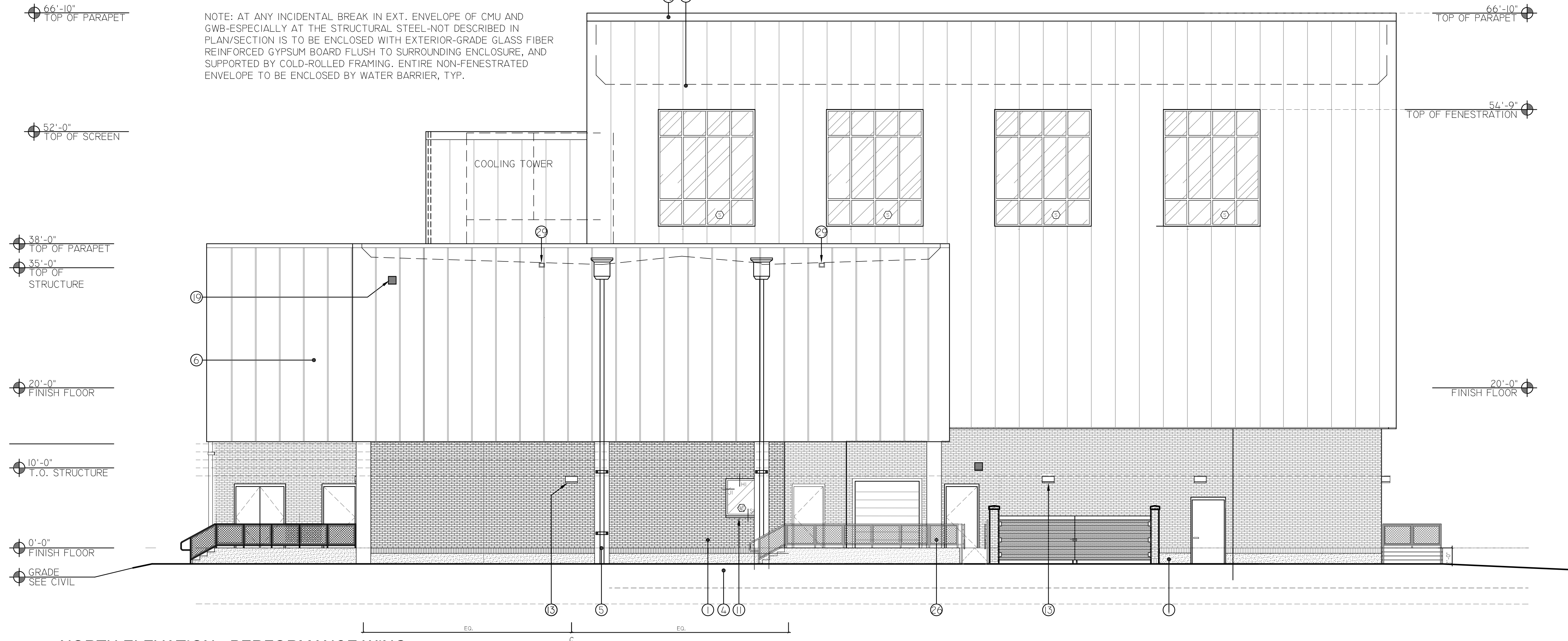
A-5.2

FINISH LEGEND

- ① BRICK VENEER
- ② STANDING SEAM METAL ROOF
- ③ NOT USED
- ④ EXPOSED FOUNDATION
- ⑤ ROOF LEADER
- ⑥ VERTICAL INSULATED METAL PANEL SYSTEM (RE: SPECS)
- ⑦ METAL PANEL CANOPY
- ⑧ SUN SHADE / LOUVER DEVICE
- ⑨ PERFORATED CORRUGATED ALUMINUM SCREENING PANEL
- ⑩ GLAZING UNIT
- ⑪ CAST STONE SILL
- ⑫ DECORATIVE METAL RAILING SYSTEM, RE: SPECS
- ⑬ EXTERIOR LIGHTING ELEMENT
- ⑭ BITUMEN ROOFING SYSTEM
- ⑮ EXTRUDED METAL SIGNAGE
- ⑯ METAL COPING
- ⑰ POURED IN PLACE CONCRETE PLANTER
- ⑱ CORRUGATED METAL PANEL SYSTEM (RE: SPECS)
- ⑲ MECHANICAL LOUVER (RE: MECH. DWGS)
- ⑳ EXHAUST LOUVER (RE: MECH. DWGS.)
- ㉑ DEDICATION PLAQUE, RE: A9.16
- ㉒ CERAMIC FRITTED SIGNAGE
- ㉓ NOT USED
- ㉔ COMPOSITE FENCING
- ㉕ ROOF ACCESS LADDER (W/LOCKING GATE)
- ㉖ CONCRETE ENCASED COLUMN
- ㉗ COLUMN ENCASED IN COLUMN WRAP
- ㉘ BREAK METAL WRAP
- ㉙ OVERFLOW SCUPPER
- ㉚ PANELIZED LOUVRE SYSTEM



WEST ELEVATION - PERFORMANCE WING

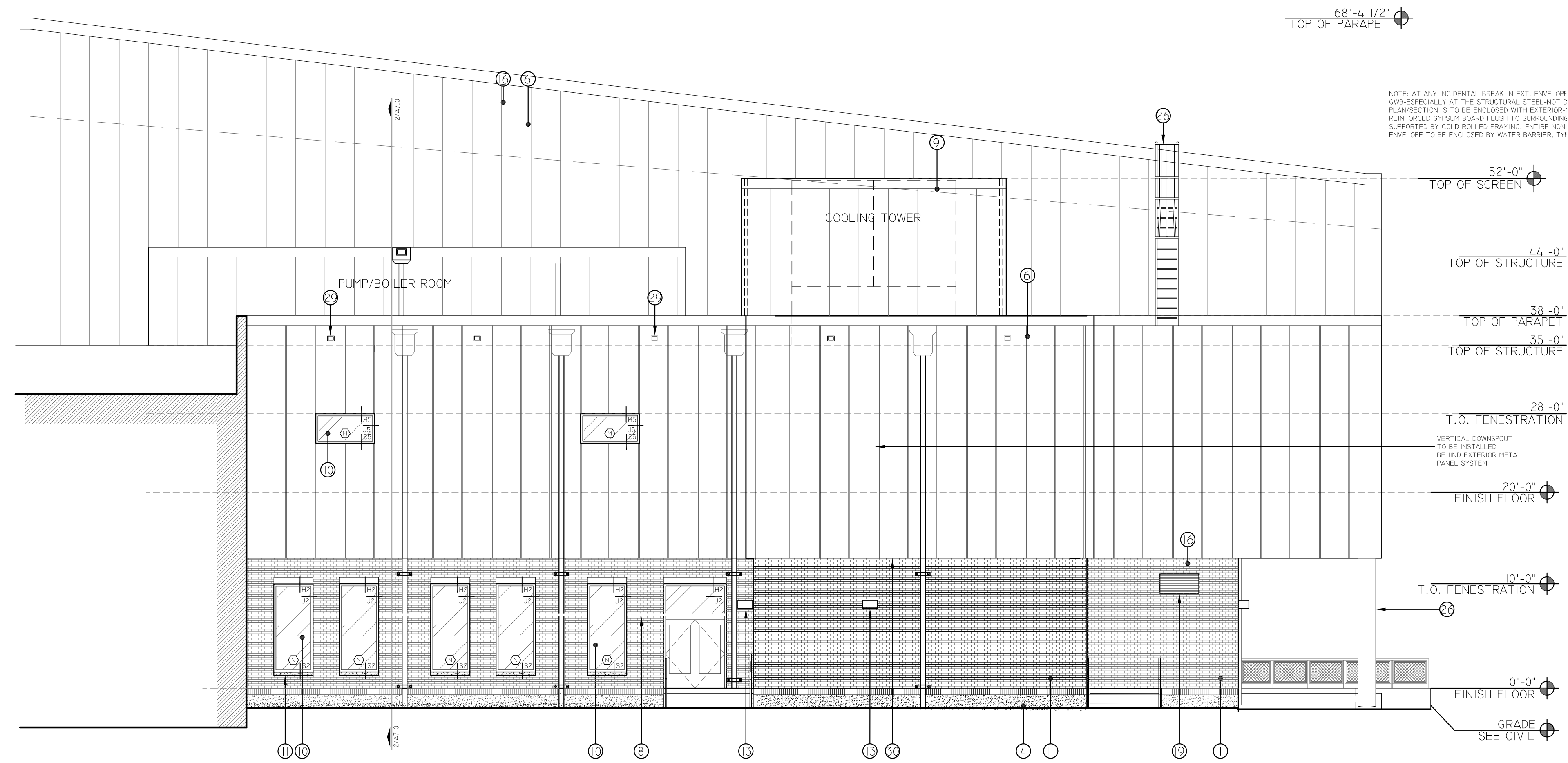


NORTH ELEVATION - PERFORMANCE WING

- CONDITIONAL USE APPROVAL -

ZONING DOCKET # _____
 FINAL ACTION: _____ WAIVERS _____ PROVISOS _____
 ORDINANCE # _____ ADOPTED DATE: _____
 FINAL PLAN APPROVAL DATE: _____
 EXECUTIVE DIRECTOR OF CITY PLANNING COMMISSION

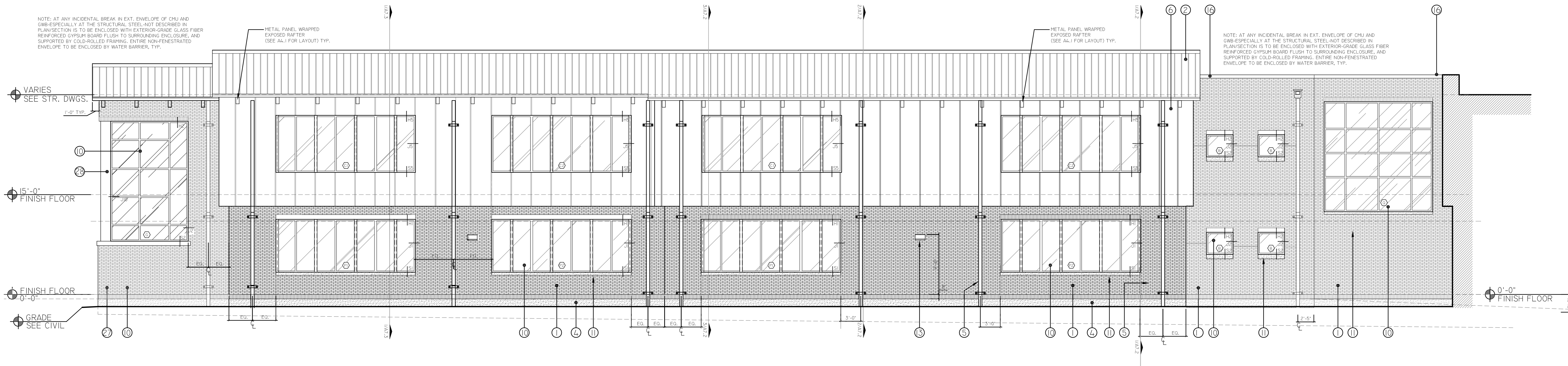
A-5.3



1 EAST ELEVATION - PERFORMANCE WING
A5.4

FINISH LEGEND

- ① BRICK VENEER
- ② STANDING SEAM METAL ROOF
- ③ NOT USED
- ④ EXPOSED FOUNDATION
- ⑤ ROOF LEADER
- ⑥ VERTICAL INSULATED METAL PANEL SYSTEM (RE: SPECS)
- ⑦ METAL PANEL CANOPY
- ⑧ SUN SHADE / LOUVER DEVICE
- ⑨ PERFORATED CORRUGATED ALUMINUM SCREENING PANEL
- ⑩ GLAZING UNIT
- ⑪ CAST STONE SILL
- ⑫ DECORATIVE METAL RAILING SYSTEM, RE: SPECS
- ⑬ EXTERIOR LIGHTING ELEMENT
- ⑭ BITUMEN ROOFING SYSTEM
- ⑮ EXTRUDED METAL SIGNAGE
- ⑯ METAL COPING
- ⑰ POURED IN PLACE CONCRETE PLANTER
- ⑱ CORRUGATED METAL PANEL SYSTEM (RE: SPECS)
- ⑲ MECHANICAL LOUVER (RE: MECH. DWGS.)
- ⑳ EXHAUST LOUVER (RE: MECH. DWGS.)
- ㉑ DEDICATION PLAQUE, RE: A9.16
- ㉒ CERAMIC FRITTED SIGNAGE
- ㉓ NOT USED
- ㉔ COMPOSITE FENCING
- ㉕ ROOF ACCESS LADDER (W/LOCKING GATE)
- ㉖ CONCRETE ENCASED COLUMN
- ㉗ COLUMN ENCASED IN COLUMN WRAP
- ㉘ BREAK METAL WRAP
- ㉙ OVERFLOW SCUPPER
- ㉚ PANELIZED LOUVRE SYSTEM



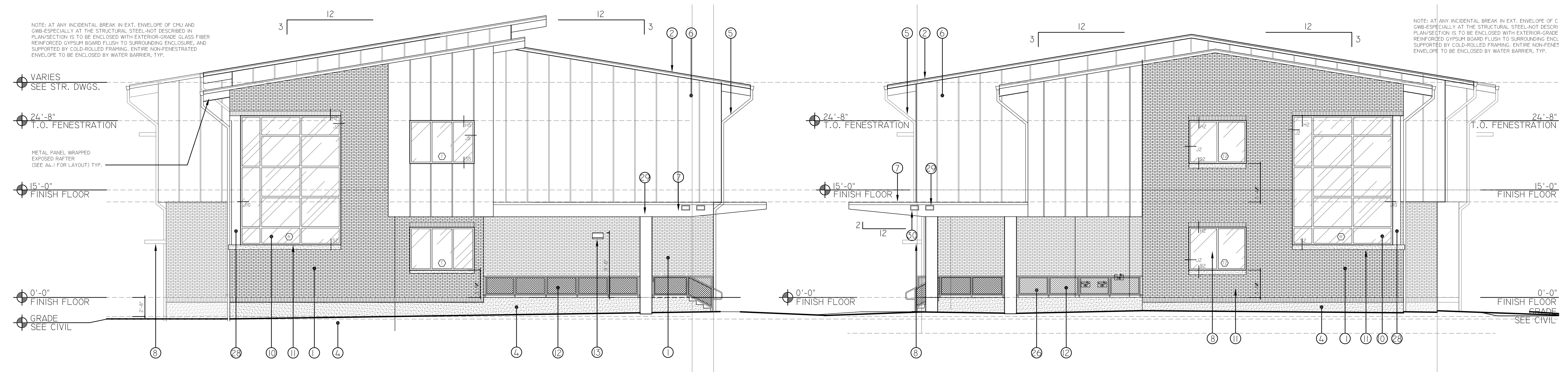
2 NORTH ELEVATION @ CLASSROOM WING II
A5.4

- CONDITIONAL USE APPROVAL -
 ZONING DOCKET # _____
 FINAL ACTION: _____ WAIVERS _____ PROVISOs _____
 ORDINANCE # _____ ADOPTED DATE: _____
 FINAL PLAN APPROVAL DATE: _____
 EXECUTIVE DIRECTOR OF CITY PLANNING COMMISSION

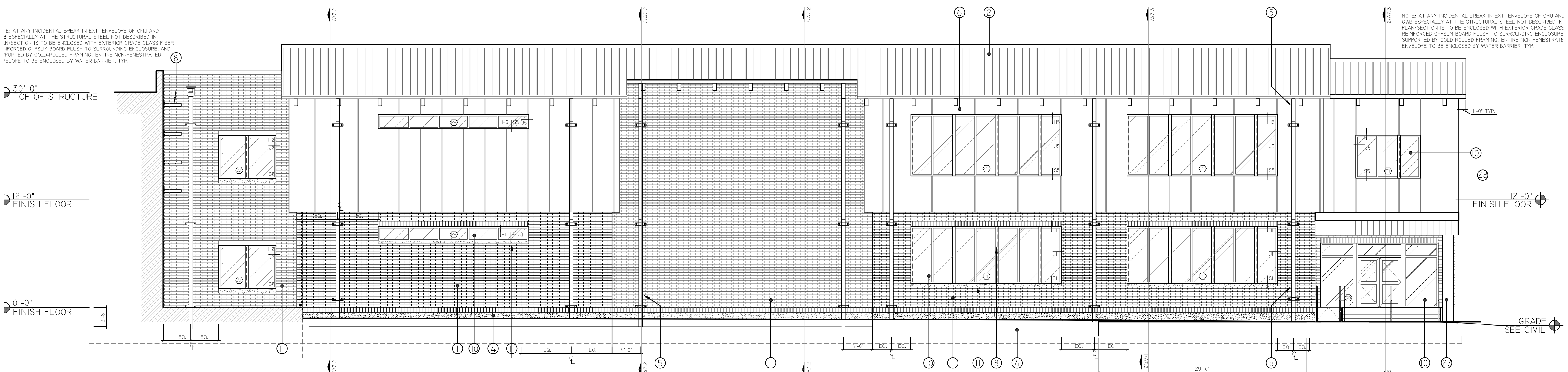
A-5.4

FINISH LEGEND

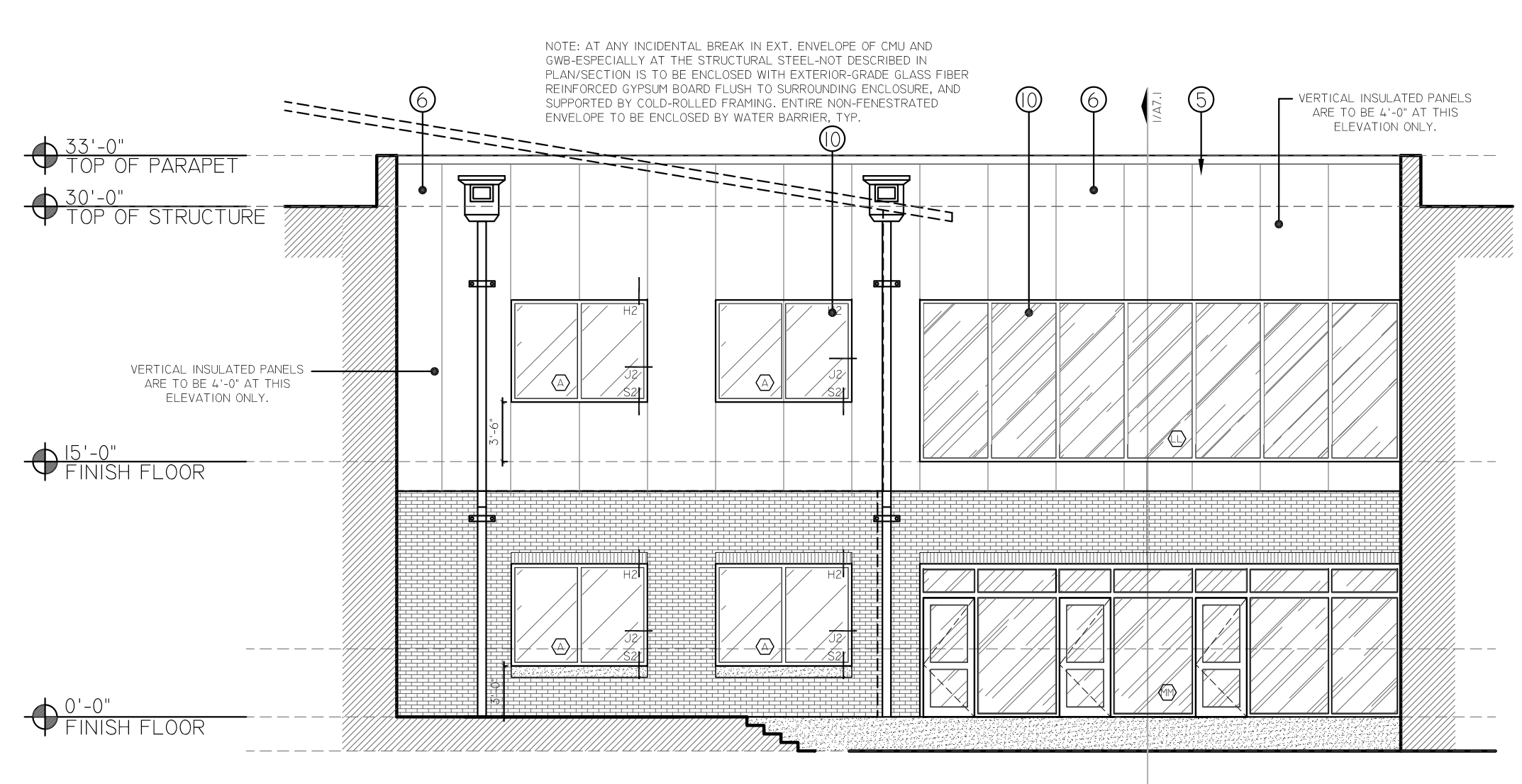
- ① BRICK VENEER
- ② STANDING SEAM METAL ROOF
- ③ NOT USED
- ④ EXPOSED FOUNDATION
- ⑤ ROOF LEADER
- ⑥ VERTICAL INSULATED METAL PANEL SYSTEM (RE: SPECS)
- ⑦ METAL PANEL CANOPY
- ⑧ SUN SHADE / LOUVER DEVICE
- ⑨ PERFORATED CORRUGATED ALUMINUM SCREENING PANEL
- ⑩ GLAZING UNIT
- ⑪ CAST STONE SILL
- ⑫ DECORATIVE METAL RAILING SYSTEM, RE: SPECS
- ⑬ EXTERIOR LIGHTING ELEMENT
- ⑭ BITUMEN ROOFING SYSTEM
- ⑮ EXTRUDED METAL SIGNAGE
- ⑯ METAL COPING
- ⑰ POURED IN PLACE CONCRETE PLANTER
- ⑱ CORRUGATED METAL PANEL SYSTEM (RE: SPECS)
- ⑲ MECHANICAL LOUVER (RE: MECH. DWGS)
- ⑳ EXHAUST LOUVER (RE: MECH. DWGS.)
- ㉑ DEDICATION PLAQUE, RE: A9.16
- ㉒ CERAMIC FRITTED SIGNAGE
- ㉓ NOT USED
- ㉔ COMPOSITE FENCING
- ㉕ ROOF ACCESS LADDER (W/LOCKING GATE)
- ㉖ CONCRETE ENCASED COLUMN
- ㉗ COLUMN ENCASED IN COLUMN WRAP
- ㉘ BREAK METAL WRAP
- ㉙ OVERFLOW SCUPPER
- ㉚ PANELIZED LOUVRE SYSTEM



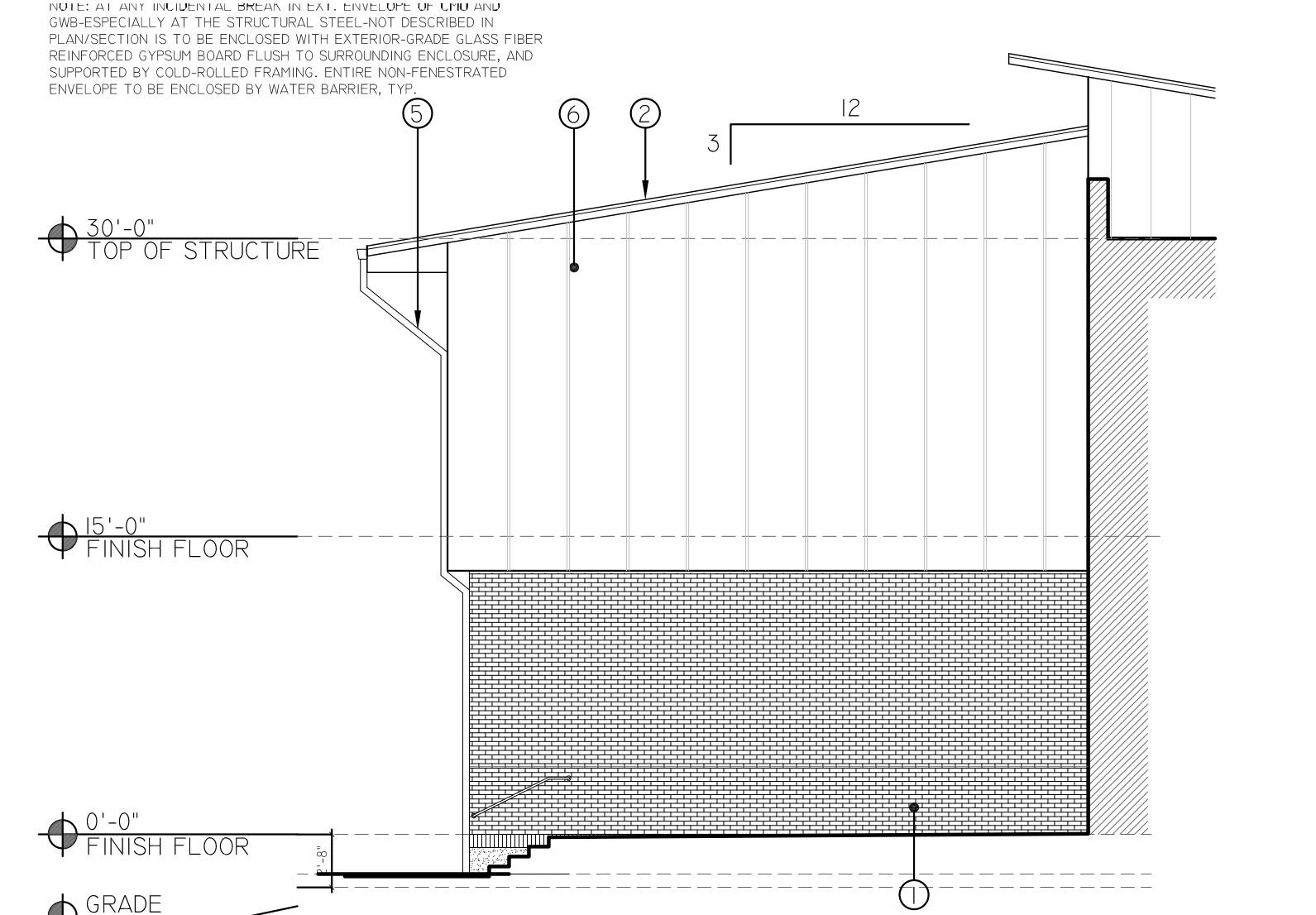
1 EAST ELEVATION - CLASSROOM WING I & II



2 SOUTH ELEVATION - CLASSROOM WING II



3 EAST ELEVATION - MAIN CORRIDOR



4 WEST ELEVATION - CLASSROOM WING I

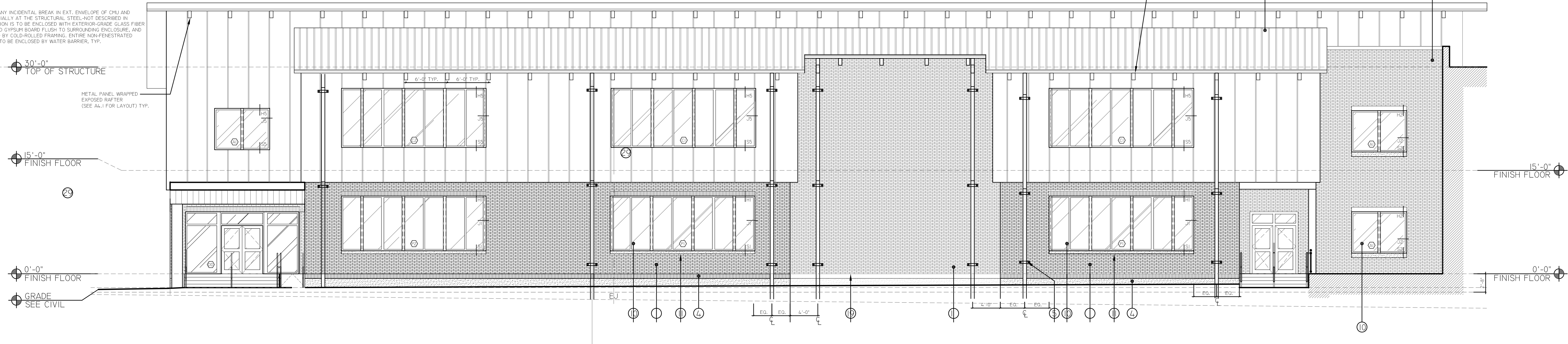
- CONDITIONAL USE APPROVAL -

ZONING DOCKET # _____
 FINAL ACTION: _____ WAIVERS _____ PROVISOS
 ORDINANCE # _____ ADOPTED DATE: _____
 FINAL PLAN APPROVAL DATE: _____
 EXECUTIVE DIRECTOR OF CITY PLANNING COMMISSION

A-5.5

NOTE: AT ANY INCIDENTAL BREAK IN EXT. ENVELOPE OF CMU AND
 ONE-SPECIALLY AT THE STRUCTURAL STEEL NOT DESCRIBED IN
 PLAN/SECTION IS TO BE ENCLOSED WITH EXTERIOR-GRADE GLASS FIBER
 REINFORCED GYPSUM BOARD FLUSH TO SURROUNDING ENCLOSURE, AND
 SUPPORTED BY COLD-ROLLED FRAMING. ENTIRE NON-FENESTRATED
 ENVELOPE TO BE ENCLOSED BY WATER BARRIER, TYP.

NOTE: AT ANY INCIDENTAL BREAK IN EXT. ENVELOPE OF CMU AND
 ONE-SPECIALLY AT THE STRUCTURAL STEEL NOT DESCRIBED IN
 PLAN/SECTION IS TO BE ENCLOSED WITH EXTERIOR-GRADE GLASS FIBER
 REINFORCED GYPSUM BOARD FLUSH TO SURROUNDING ENCLOSURE, AND
 SUPPORTED BY COLD-ROLLED FRAMING. ENTIRE NON-FENESTRATED
 ENVELOPE TO BE ENCLOSED BY WATER BARRIER, TYP.



FINISH LEGEND

- ① BRICK VENEER
- ② STANDING SEAM METAL ROOF
- ③ NOT USED
- ④ EXPOSED FOUNDATION
- ⑤ ROOF LEADER
- ⑥ VERTICAL INSULATED METAL PANEL SYSTEM (RE: SPECS)
- ⑦ METAL PANEL CANOPY
- ⑧ SUN SHADE / LOUVER DEVICE
- ⑨ PERFORATED CORRUGATED ALUMINUM SCREENING PANEL
- ⑩ GLAZING UNIT
- ⑪ CAST STONE SILL
- ⑫ DECORATIVE METAL RAILING SYSTEM, RE: SPECS
- ⑬ EXTERIOR LIGHTING ELEMENT
- ⑭ BITUMEN ROOFING SYSTEM
- ⑮ EXTRUDED METAL SIGNAGE
- ⑯ METAL COPING
- ⑰ POURED IN PLACE CONCRETE PLANTER
- ⑱ CORRUGATED METAL PANEL SYSTEM (RE: SPECS)
- ⑲ MECHANICAL LOUVER (RE: MECH. DWGS)
- ⑳ EXHAUST LOUVER (RE: MECH. DWGS.)
- ㉑ DEDICATION PLAQUE, RE: A9.16
- ㉒ CERAMIC FRITTED SIGNAGE
- ㉓ NOT USED
- ㉔ COMPOSITE FENCING
- ㉕ ROOF ACCESS LADDER (W/LOCKING GATE)
- ㉖ CONCRETE ENCASED COLUMN
- ㉗ COLUMN ENCASED IN COLUMN WRAP
- ㉘ BREAK METAL WRAP
- ㉙ OVERFLOW SCUPPER
- ㉚ PANELIZED LOUVRE SYSTEM

1 NORTH ELEVATION - CLASSROOM WING i

- CONDITIONAL USE APPROVAL -

ZONING DOCKET # _____

FINAL ACTION: _____ WAIVERS _____ PROVISOS _____

ORDINANCE # _____ ADOPTED DATE: _____

FINAL PLAN APPROVAL DATE: _____

EXECUTIVE DIRECTOR OF CITY PLANNING COMMISSION

A-5.6