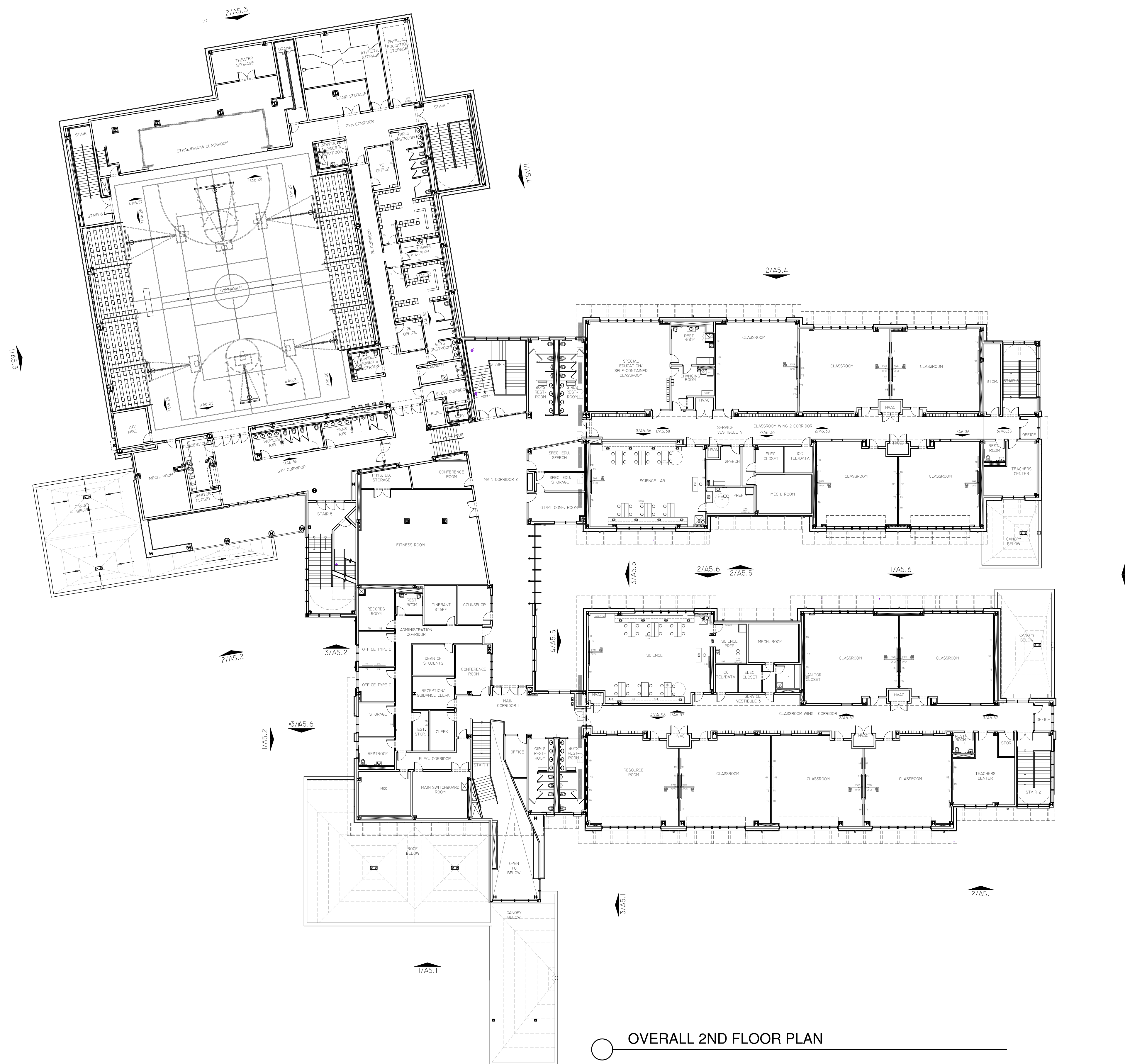


○ OVERALL 1ST FLOOR PLAN

ABRAMSON SCHOOL
5552 READ BLVD. - New Orleans, Louisiana 70127

- CONDITIONAL USE APPROVAL -
 ZONING DOCKET # _____
 FINAL ACTION: _____ WAIVERS _____ PROVISOS
 ORDINANCE # _____ ADOPTED DATE: _____
 FINAL PLAN APPROVAL DATE: _____
 EXECUTIVE DIRECTOR OF CITY PLANNING COMMISSION

A-2.0



○ OVERALL 2ND FLOOR PLAN

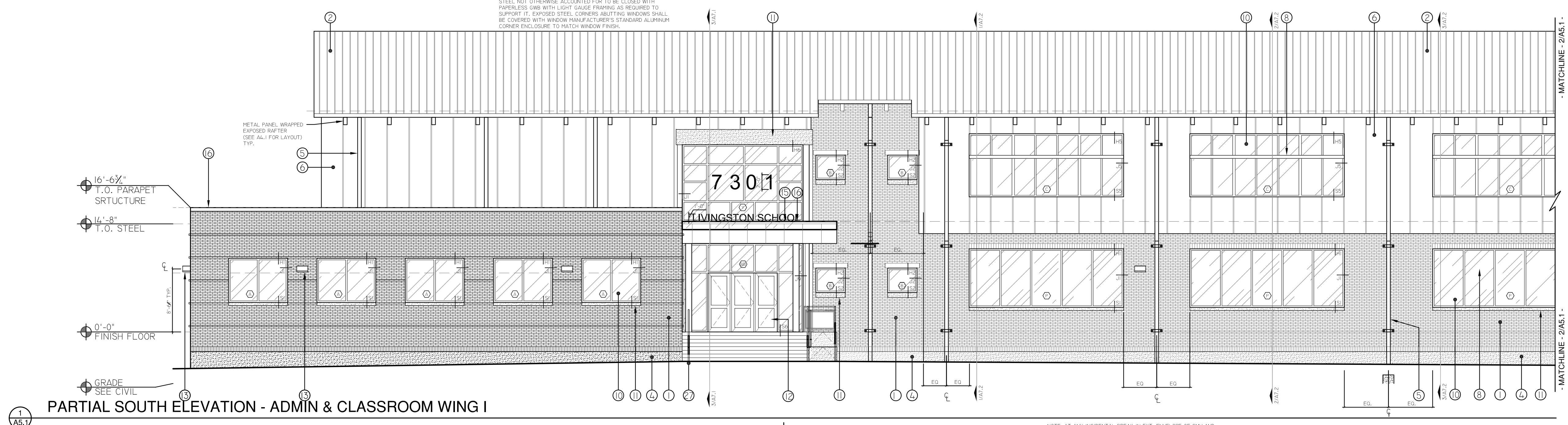
- CONDITIONAL USE APPROVAL -
 ZONING DOCKET # _____
 FINAL ACTION: _____ WAIVERS _____ PROVISOS
 ORDINANCE # _____ ADOPTED DATE: _____
 FINAL PLAN APPROVAL DATE: _____
 EXECUTIVE DIRECTOR OF CITY PLANNING COMMISSION

A-2.1

FINISH LEGEND

- 1 BRICK VENEER
- 2 STANDING SEAM METAL ROOF
- 3 NOT USED
- 4 EXPOSED FOUNDATION
- 5 ROOF LEADER
- 6 VERTICAL INSULATED METAL PANEL SYSTEM (RE: SPECS)
- 7 METAL PANEL CANOPY
- 8 SUN SHADE / LOUVER DEVICE
- 9 PERFORATED CORRUGATED ALUMINUM SCREENING PANEL
- 10 GLAZING UNIT
- 11 PLASTER SILL/COPING
- 12 DECORATIVE METAL RAILING SYSTEM, RE: SPECS
- 13 EXTERIOR LIGHTING ELEMENT
- 14 BITUMEN ROOFING SYSTEM
- 15 EXTRUDED METAL SIGNAGE
- 16 METAL COPING
- 17 Poured in place concrete planter
- 18 CORRUGATED METAL PANEL SYSTEM (RE: SPECS)
- 19 MECHANICAL LOUVER (RE: MECH. DWGS)
- 20 EXHAUST LOUVER (RE: MECH. DWGS.)
- 21 DEDICATION PLAQUE, RE: A9.16
- 22 CERAMIC FRITTED SIGNAGE
- 23 NOT USED
- 24 COMPOSITE FENCING
- 25 ROOF ACCESS LADDER (W/LOCKING GATE)
- 26 CONCRETE ENCASED COLUMN
- 27 PAINTED METAL COLUMN
- 28 BREAK METAL WRAP
- 29 OVERFLOW SCUPPER
- 30 PANELIZED LOUVRE SYSTEM

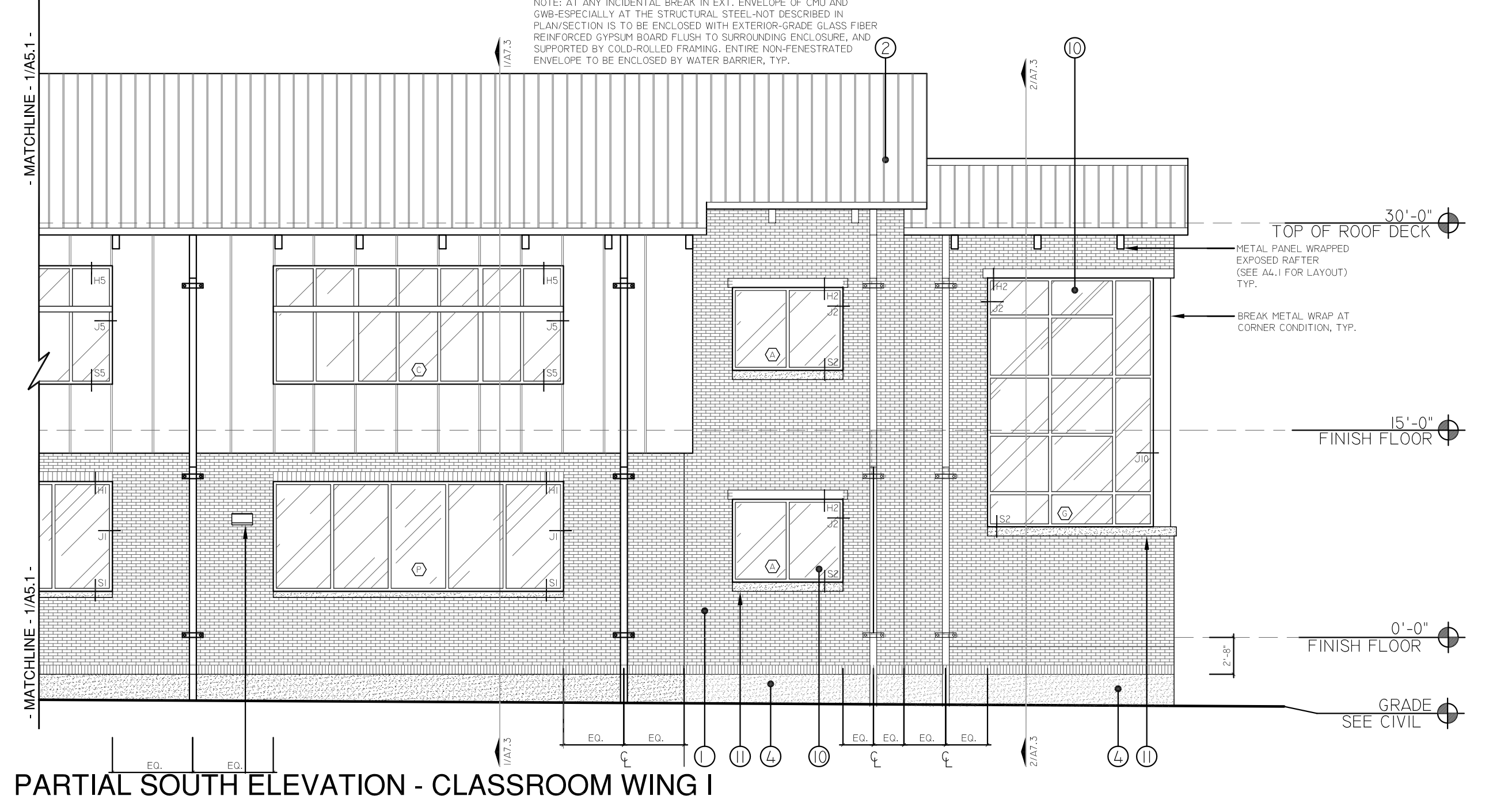
NOTE: ANY BREAK IN EXTERIOR CHU WALL ENVELOPE OR EXPOSED STEEL NOT OTHERWISE ACCOUNTED FOR TO BE CLOSED WITH PAPERLESS GWB WITH LIGHT GAUGE FRAMING AS REQUIRED TO SUPPORT IT. EXPOSED STEEL CORNERS ABUTTING WINDOWS SHALL BE COVERED WITH WINDOW MANUFACTURER'S STANDARD ALUMINUM CORNER ENCLOSURE TO MATCH WINDOW FINISH.



PARTIAL SOUTH ELEVATION - ADMIN & CLASSROOM WING I

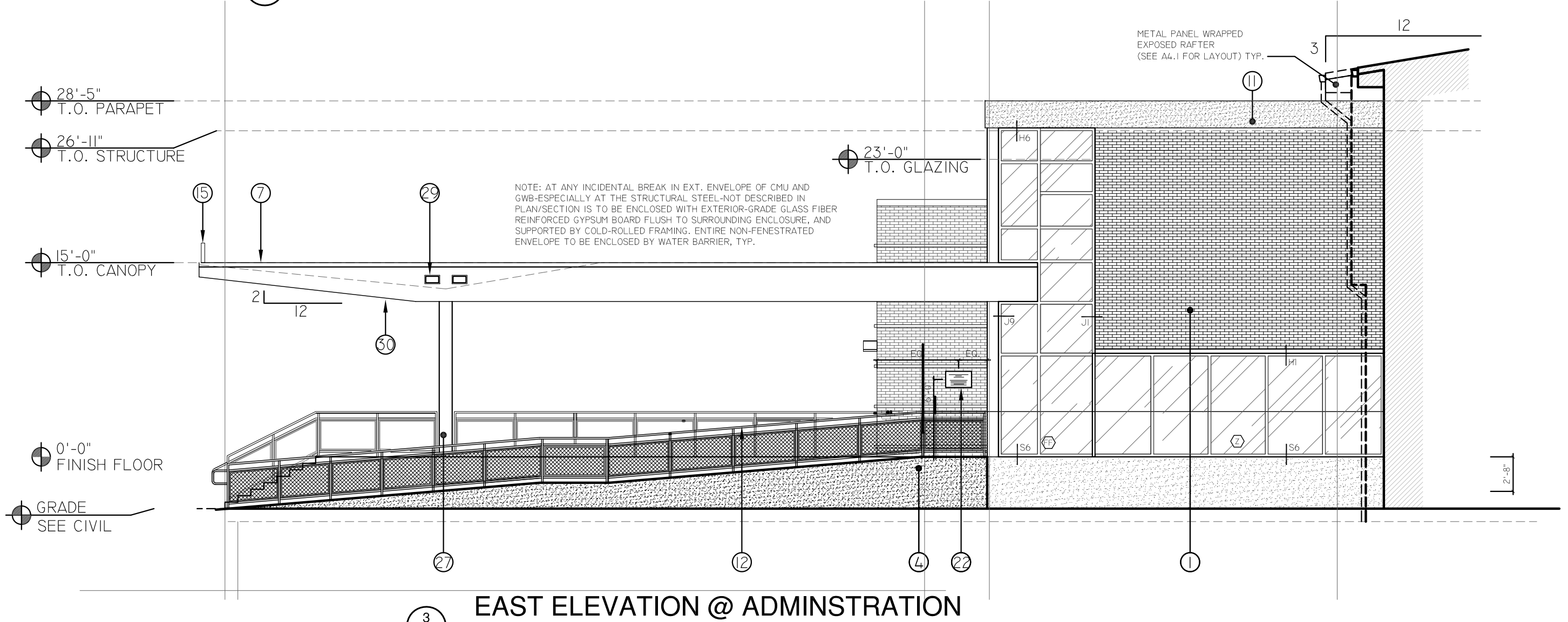
1 A5.1

NOTE: AT ANY INCIDENTAL BREAK IN EXT. ENVELOPE OF CHU AND GWB ESPECIALLY AT THE STRUCTURAL STEEL NOT DESCRIBED IN PLAN/SECTION IS TO BE ENCLOSED WITH EXTERIOR-GRADE GLASS FIBER REINFORCED CYPSUM BOARD FLUSH TO SURROUNDING ENCLOSURE, AND SUPPORTED BY COLD-ROLLED FRAMING, ENTIRE NON-FENESTRATED ENVELOPE TO BE ENCLOSED BY WATER BARRIER, TYP.



PARTIAL SOUTH ELEVATION - CLASSROOM WING I

2 A5.1



EAST ELEVATION @ ADMINISTRATION

3 A5.1

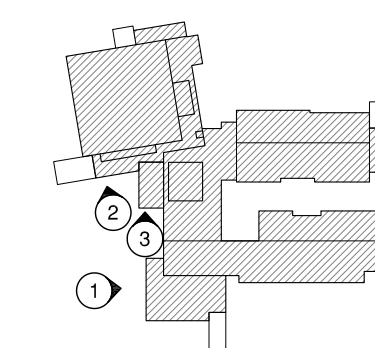
- CONDITIONAL USE APPROVAL -
 ZONING DOCKET # _____
 FINAL ACTION: _____ WAIVERS _____ PROVISOs _____
 ORDINANCE # _____ ADOPTED DATE: _____
 FINAL PLAN APPROVAL DATE: _____
 EXECUTIVE DIRECTOR OF CITY PLANNING COMMISSION

A-5.1

LEGEND

- ① BRICK VENEER
- ② STANDING SEAM METAL ROOF
- ③ NOT USED
- ④ EXPOSED FOUNDATION
- ⑤ ROOF LEADER
- ⑥ VERTICAL INSULATED METAL PANEL SYSTEM (RE: SPECS)
- ⑦ METAL PANEL CANOPY
- ⑧ SUN SHADE / LOUVRE DEVICE
- ⑨ PERFORATED CORRUGATED ALUMINUM SCREENING PANEL
- ⑩ GLAZING UNIT
- ⑪ PLASTER SILL/COPING
- ⑫ DECORATIVE METAL RAILING SYSTEM. RE: SPECS
- ⑬ EXTERIOR LIGHTING ELEMENT
- ⑭ BITUMEN ROOFING SYSTEM
- ⑮ EXTRUDED METAL SIGNAGE
- ⑯ METAL COPING
- ⑰ POURED IN PLACE CONCRETE PLANTER
- ⑱ CORRUGATED METAL PANEL SYSTEM (RE: SPECS)
- ⑲ MECHANICAL LOUVER (RE: MECH. DWGS)
- ⑳ EXHAUST LOUVER (RE: MECH. DWGS.)
- ㉑ DEDICATION PLAQUE, RE: A9.16
- ㉒ CERAMIC FRITTED SIGNAGE
- ㉓ NOT USED
- ㉔ COMPOSITE FENCING
- ㉕ ROOF ACCESS LADDER (W/LOCKING GATE)
- ㉖ CONCRETE ENCASED COLUMN
- ㉗ PAINTED METAL COLUMN
- ㉘ BREAK METAL WRAP
- ㉙ OVERFLOW SCUPPER
- ㉚ PANELIZED LOUVRE SYSTEM

KEY PLAN



SUPPL COORDINATION - FENESTRATION 4/25/11

NO.	REVISION	DATE
1	ABRAMSON SCHOOL 5552 READ BLVD. NEW ORLEANS, LA 70127	12007

EXTERIOR ELEVATIONS	TITLE
1/8" = 1'-0"	SCALE
	DRAWN/CHK

A-5.2

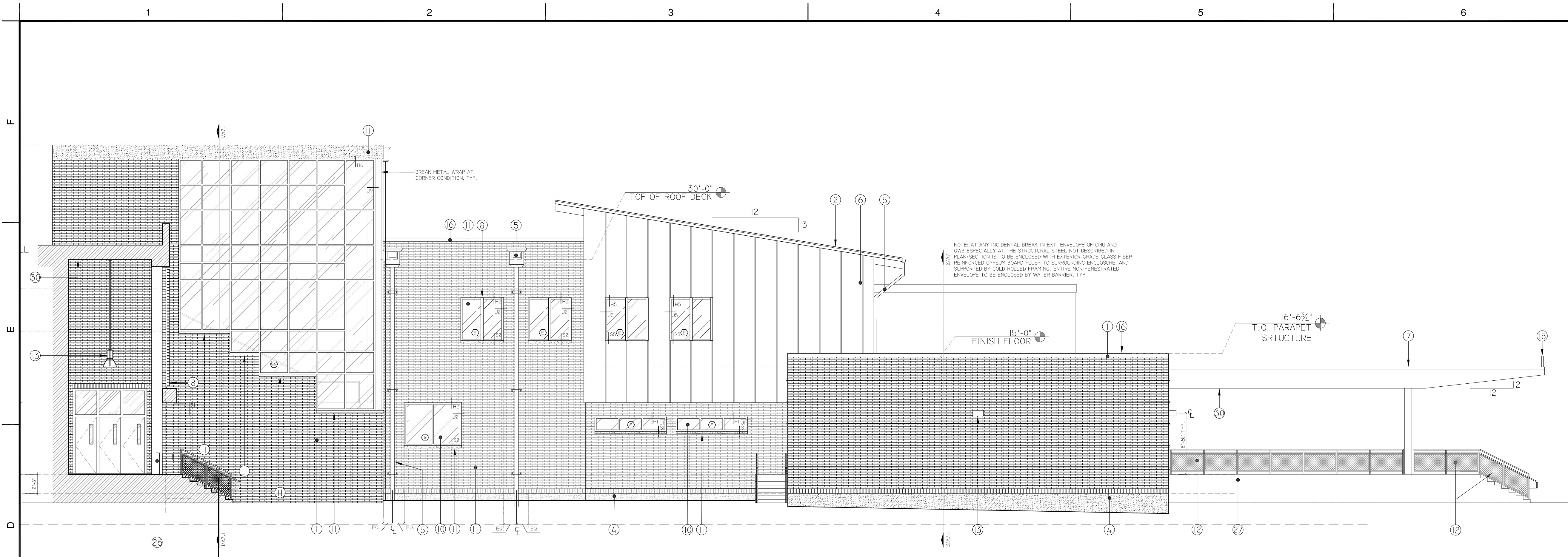
FULLY SPRINKLERED BUILDING

RWA

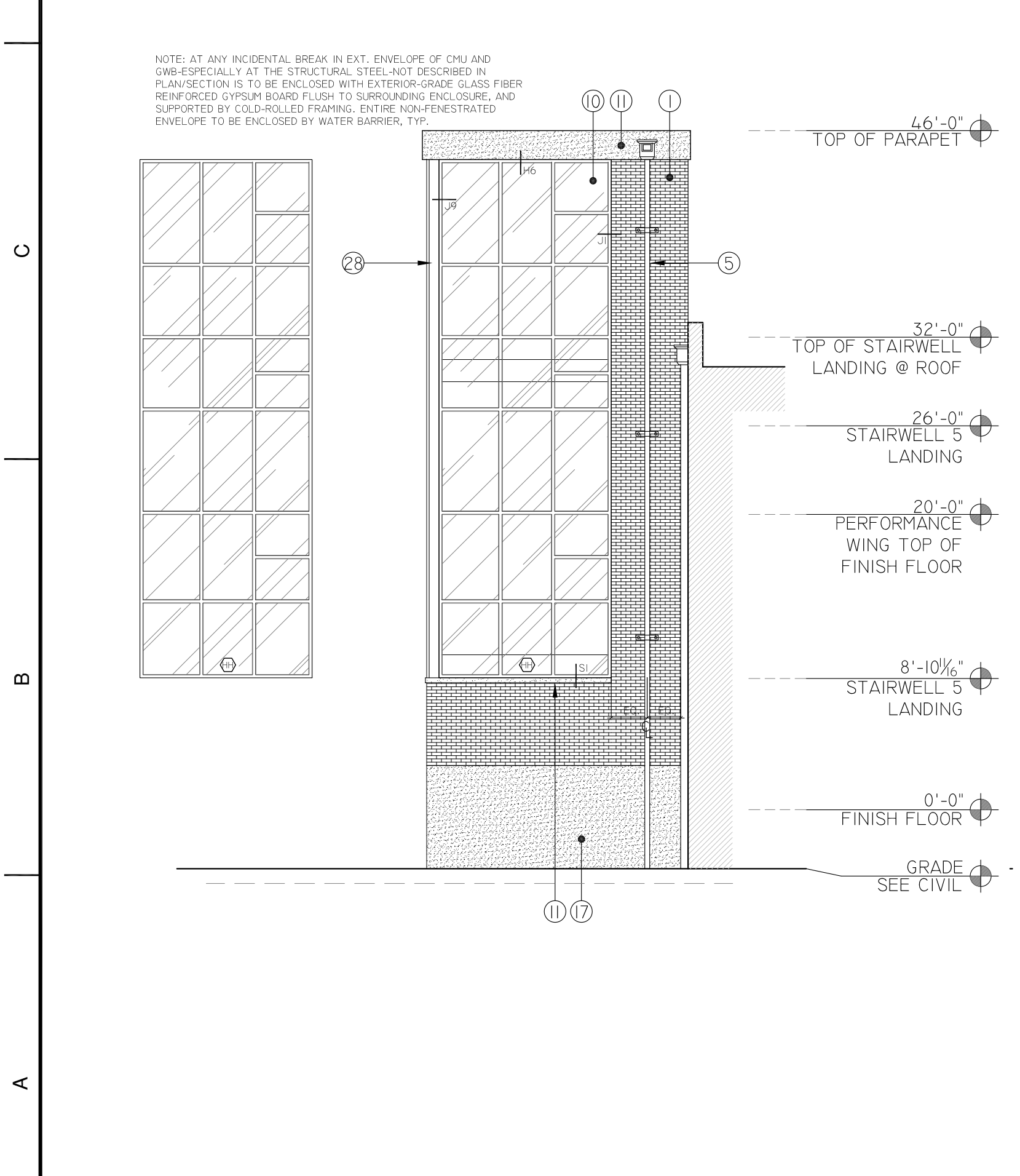
ROZAS · WARD ARCHITECTS

A PROFESSIONAL CORPORATION www.rozas-ward.com

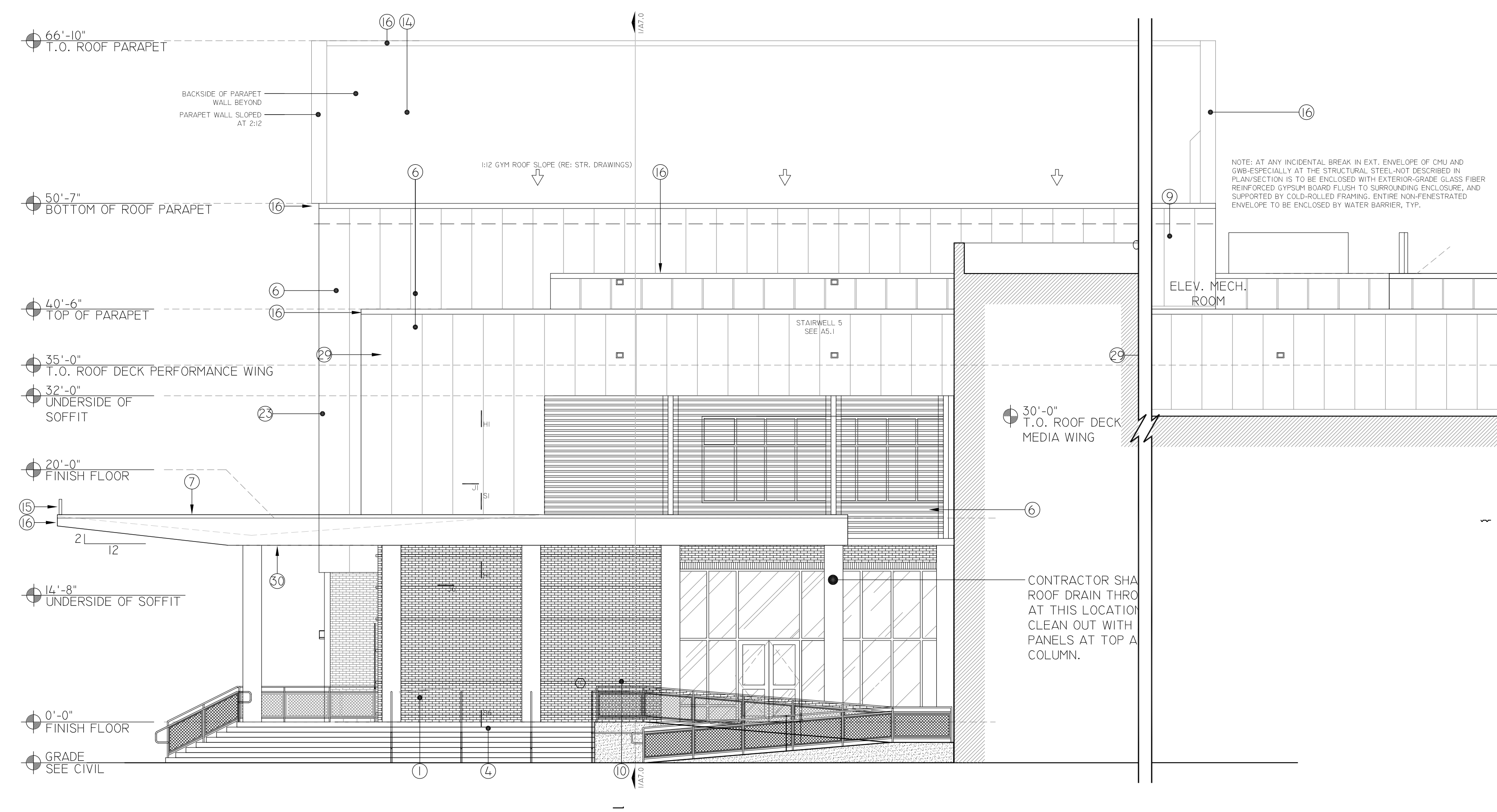
1100 POYDRAS ST. SUITE 3550 NO LA 70163 504 524 4375



1 WEST ELEVATION @ LIBRARY & ADMINISTRATION
A5.2



3 SOUTH ELEVATION - STAIRWELL 5
A5.2



2 SOUTH ELEVATION - PERFORMANCE WING
A5.2

ONE AND ONE HALF INCHES = ONE FOOT
THREE ONE INCH = ONE FOOT
ONE HALF INCH = ONE FOOT
ONE QUARTER INCH = ONE FOOT
ONE EIGHT INCH = ONE FOOT