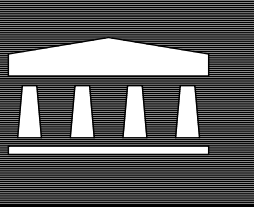


DATE 12-26-12
 DRAWN
 CHECK
 REVISED

**NEW LAKE FOREST SCHOOL
 AT GREATER ST. STEPHENS SITE**
 1110 LAKE FOREST BLVD
 NEW ORLEANS, LA 70128
 FOR THE
 NEW ORLEANS PARISH SCHOOL BOARD

**HEGEDUS
 ARCHITECTS**

IMRE HEGEDUS AND ASSOCIATED ARCHITECTS
 701 LOYOLA AVENUE SUITE 811 / P.O. BOX 56367
 NEW ORLEANS, LA 70113
 PHONE: (504) 292-8900 / FAX: (504) 292-9441
 EMAIL: HEGEDUSARCHITECT@BELLSOUTH.NET

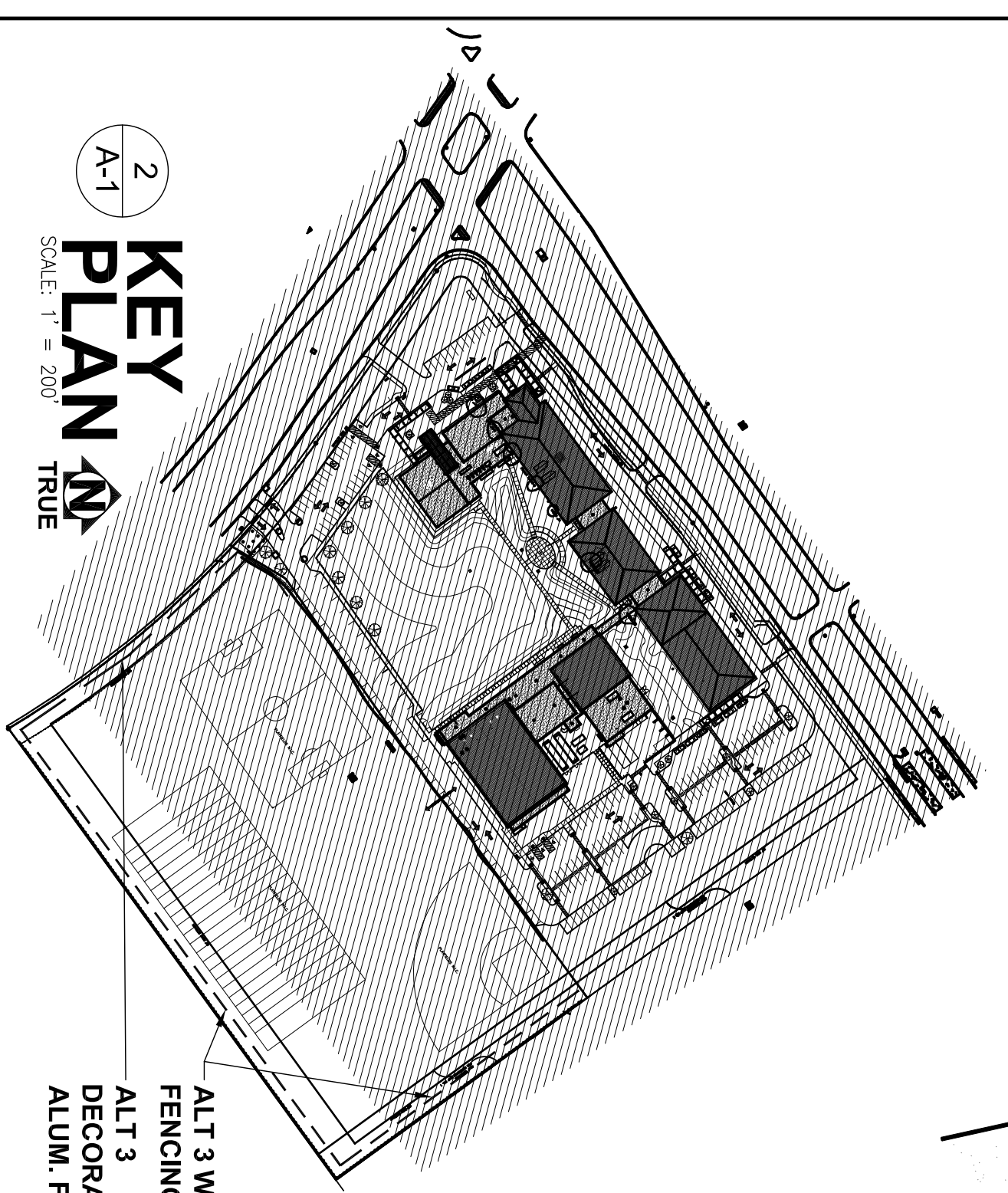


JOB NO.
 1202

SHEET
 A-1

1 SITE PLAN
 SCALE: 1" = 40'-0"

2 KEY PLAN
 SCALE: 1" = 200'



PARKING SPACES
 PROVIDED IN BASE BID = 122 SPACES
 41 FRONT LOT SPACES 9' x 18'
 81 REAR LOT SPACES 9' x 18'

ALTERNATE #2 TOTAL = 78 SPACES
 29 REAR LOT SPACES 9' x 18'
 10 REAR LOT SPACES 7'-6" x 18'
 39 PARALLEL SPACES 10' x 20'
 TOTAL 200 PARKING SPACES

ALTERNATE #3 SCOPE 7.2 ACRES

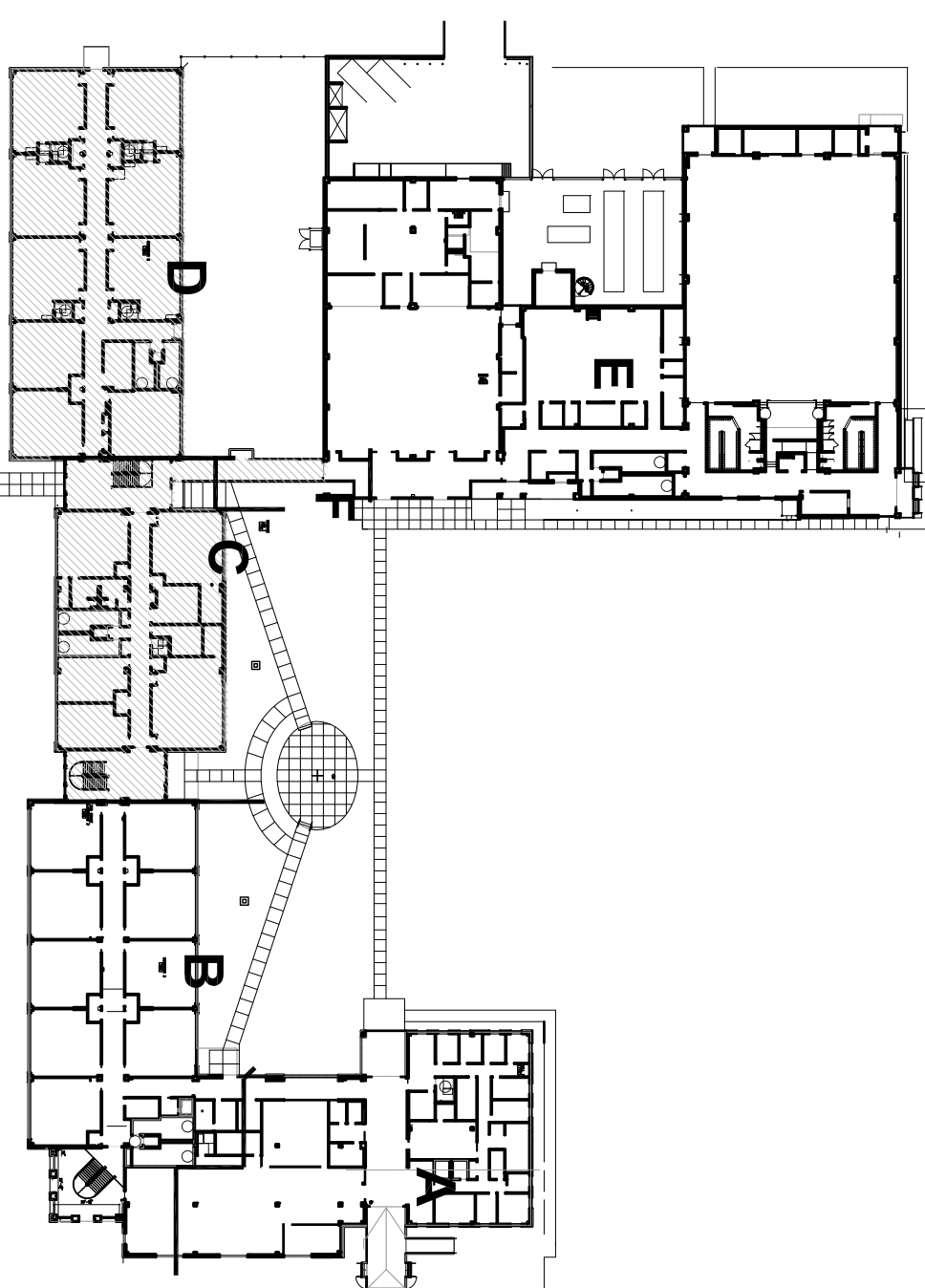
CLEAR SITE. PROVIDE ± 3'-0" OF NEW FILL, REGRADE, PROVIDE AREA DRAINS U.G. PIPING. TIE INTO CITY STORM WATER.

PROVIDE 1150 LF OF 8" TALL CEDAR FENCING ON 2 1/2" O.D. GALV. POST SET IN CONCRETE 10'-0" O.C. ON SOUTH AND EAST SIDE

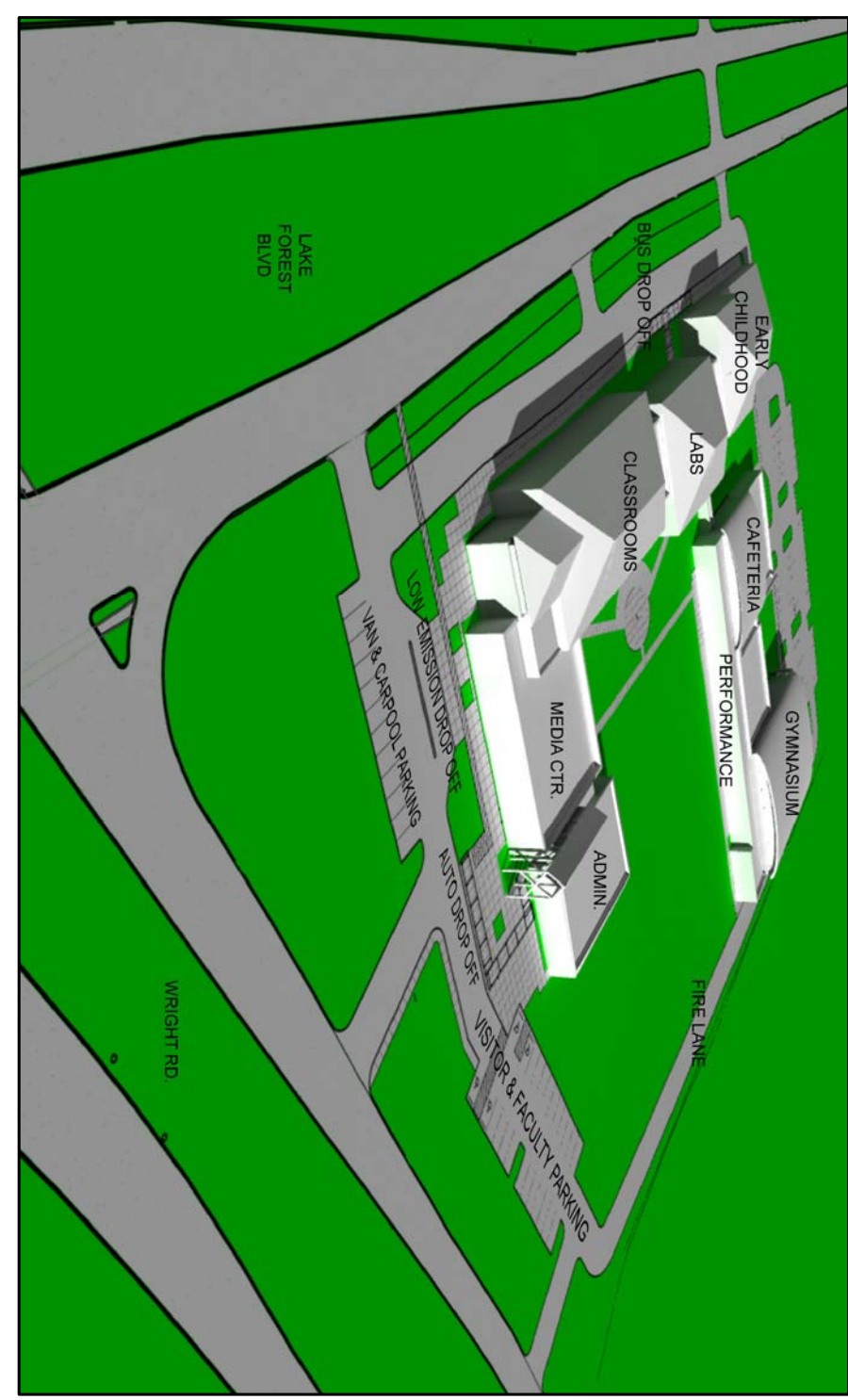
PROVIDE 392 LF OF 5" WIDE 4" THICK SIDEWALK AND 392 LF OF DECORATIVE ALUMINUM FENCING ALONG WRIGHT ROAD.

ALT. #3 WORK

BASE BID WORK

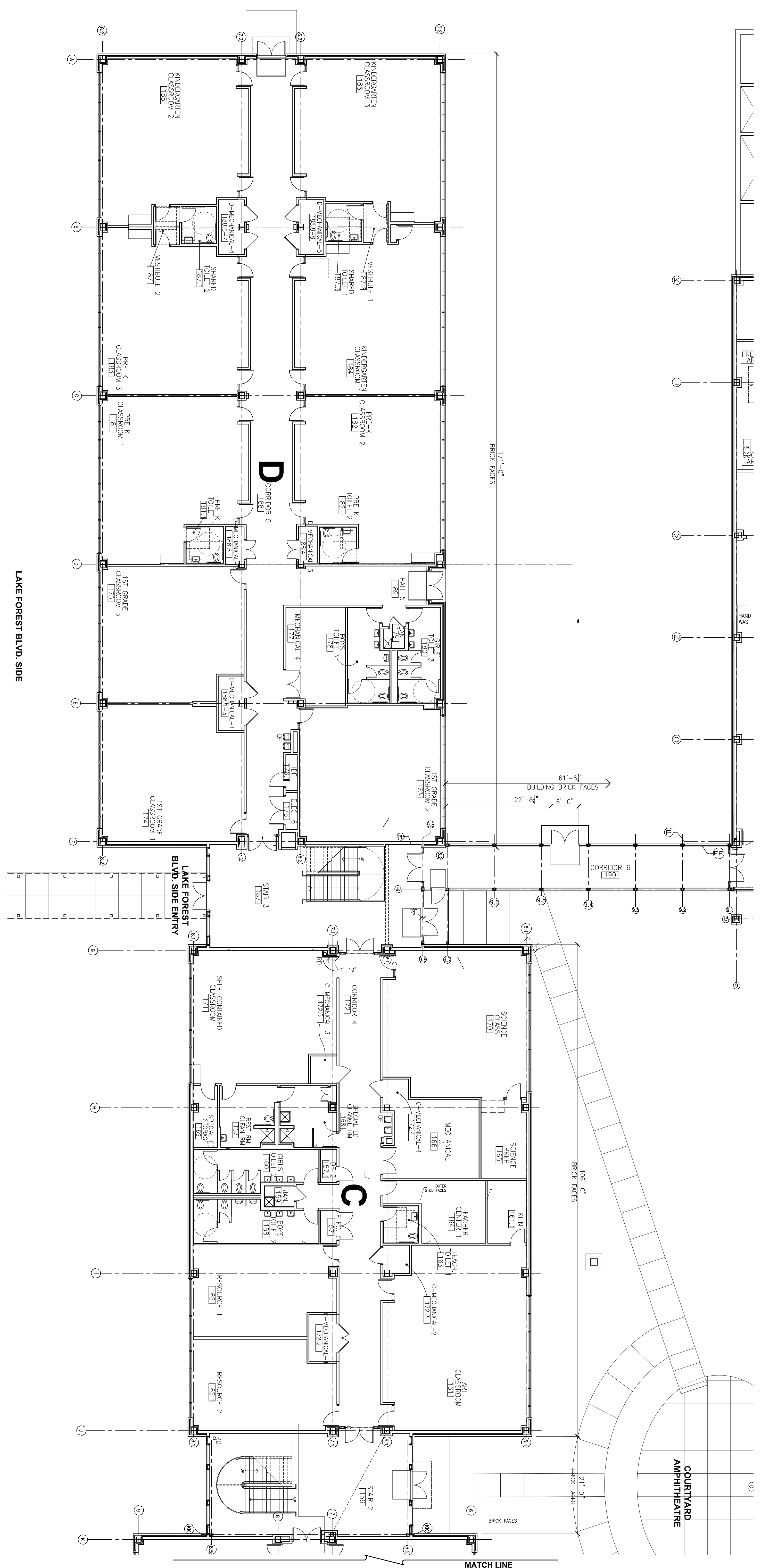


2 KEY PLAN
SCALE: 1" = 80'



3 MASSING MODEL
SCALE: NONE

DRAINAGE CANAL. SIDE



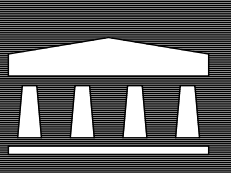
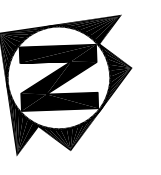
LAKE FOREST BLVD. SIDE

LAKE FOREST BLVD. SIDE ENTRY

COURTYARD AMPHITHEATRE

MATCH LINE

1 FIRST FLOOR - BLDGS C & D
SCALE: 3/32" = 1'-0"



HEGEDUS ARCHITECTS

IMRE HEGEDUS AND ASSOCIATED ARCHITECTS
701 LOYOLA AVENUE SUITE 811 / P.O. BOX 56367
NEW ORLEANS, LA 70113
PHONE: (504) 224-8426 FAX: (504) 522-9641
EMAIL: HEGEDUSARCHITECT@BELLSOUTH.NET

DATE	12-26-12
DRAWN	
CHECK	
REVISED	

**NEW LAKE FOREST SCHOOL
AT GREATER ST. STEPHENS SITE**

11110 LAKE FOREST BLVD
NEW ORLEANS, LA 70128

FOR THE
NEW ORLEANS PARISH SCHOOL BOARD

JOB NO.
1202

SHEET

A-3