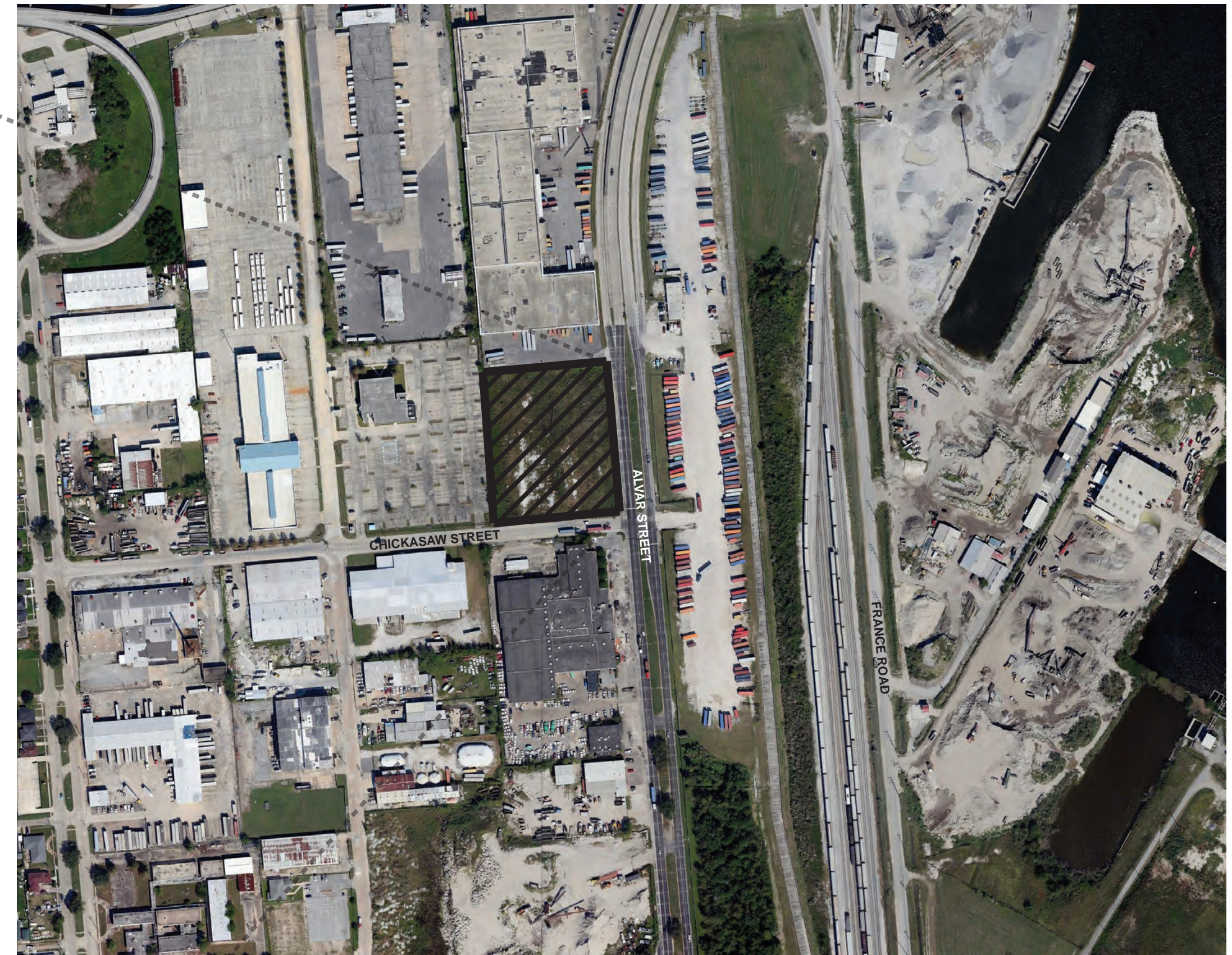
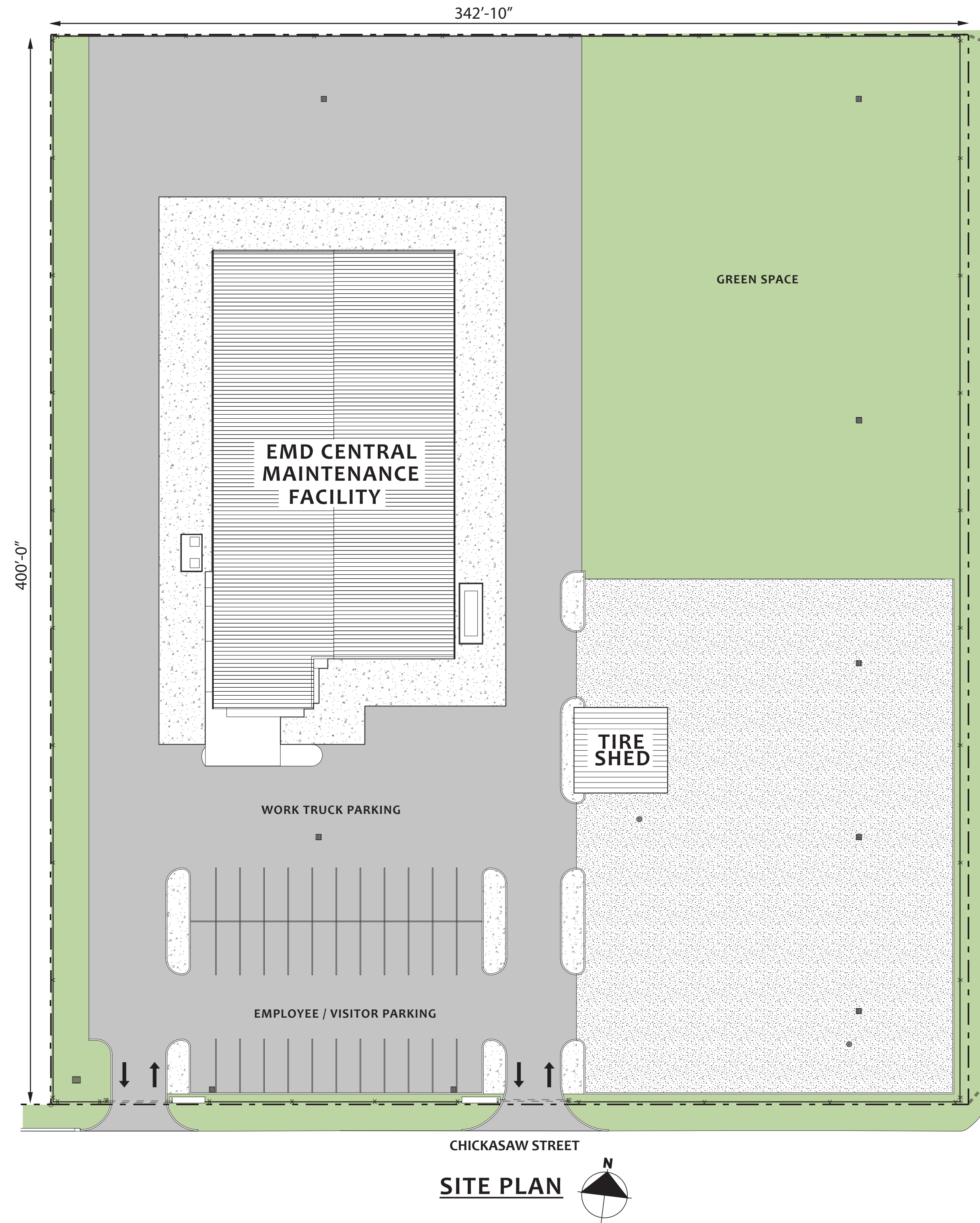
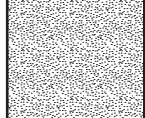






# EMD - CENTRAL MAINTENANCE FACILITY

## CITY OF NEW ORLEANS



**VICINITY MAP**

-  GRANULAR, CRUSHED STONE PAVEMENT
-  ASPHALT PAVEMENT
-  PORTLAND CEMENT CONCRETE PAVEMENT
-  10' HIGH CHAIN LINK FENCE WITH BARBED WIRE
-  PROPERTY LINE

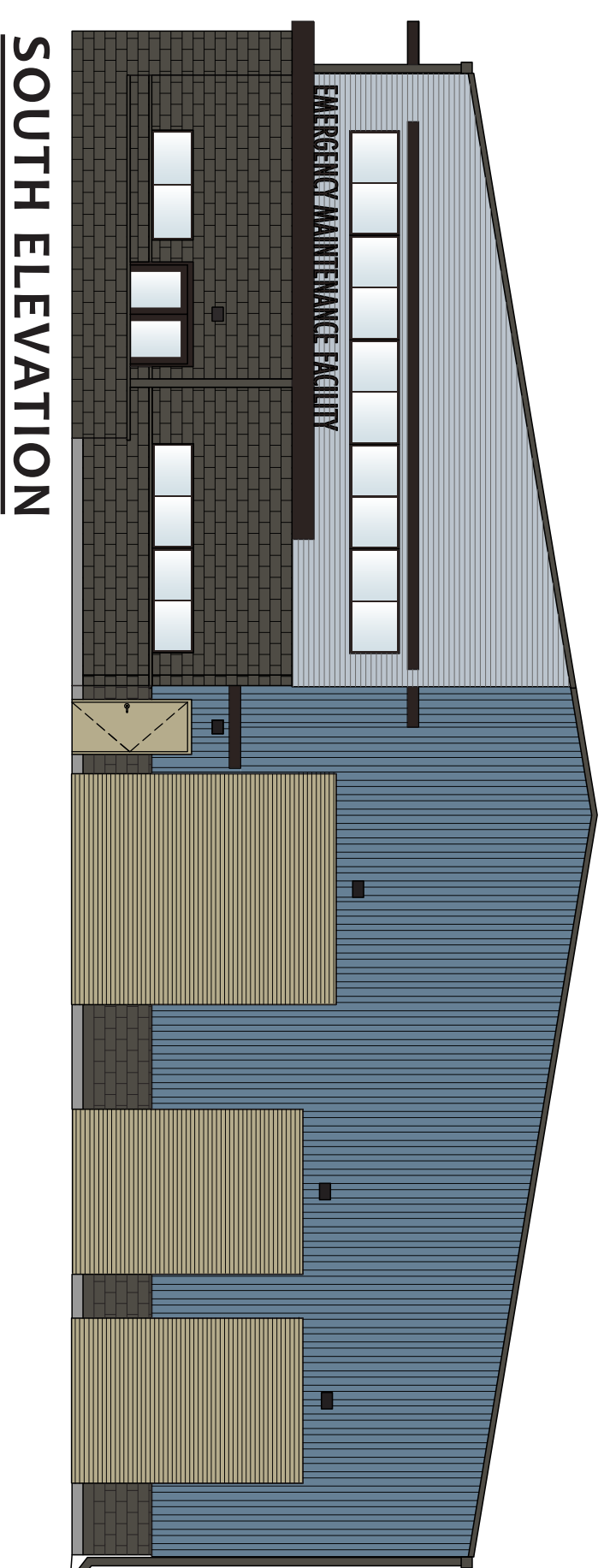


**LINFIELD, HUNTER & JUNIUS, INC.**  
 PROFESSIONAL ENGINEERS, ARCHITECTS  
 AND SURVEYORS  
 3608 18th Street, Suite 200  
 Metairie, Louisiana 70002

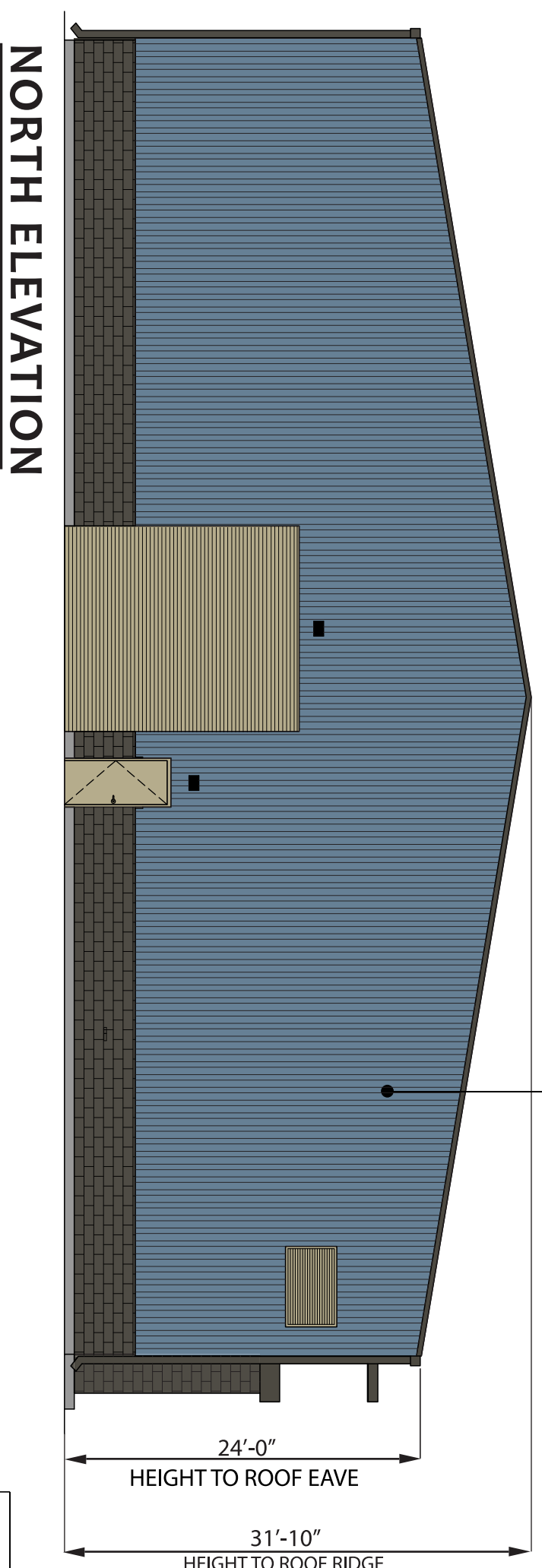


# EMD - CENTRAL MAINTENANCE FACILITY

## CITY OF NEW ORLEANS



**SOUTH ELEVATION**



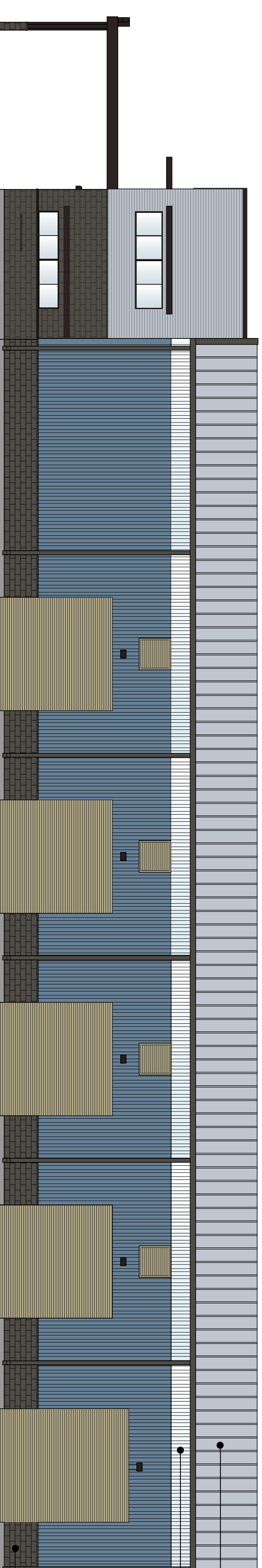
**NORTH ELEVATION**

**RIBBED METAL WALL  
PANELS & TRIM**

**METAL ROOFING**

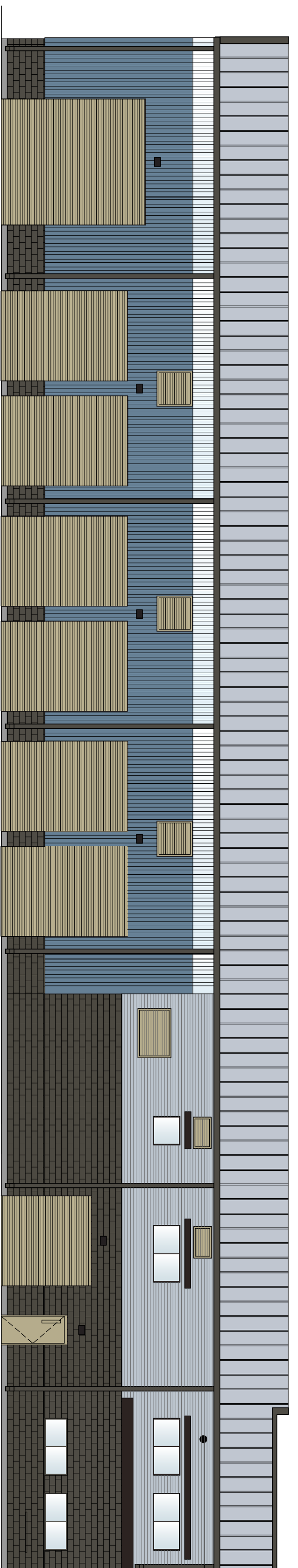
**TRANSLUCENT RIBBED  
METAL WALL PANEL**

**EXTERIOR CONCRETE  
BLOCK**



**EAST ELEVATION**

**CORRUGATED METAL  
WALL PANELS**



**WEST ELEVATION**

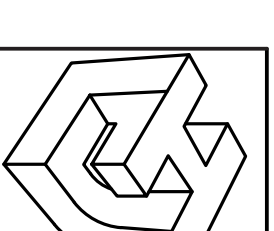
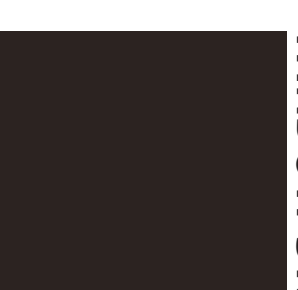
**DOORS &  
FRAMES**



**FASCIA, DOWNSPOUTS,  
& GUTTERS**



**ALUMINUM SUNSHADES &  
WINDOW SYSTEMS**

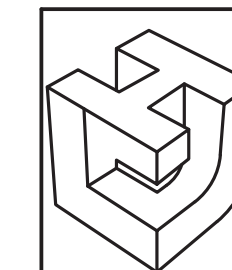
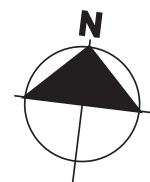
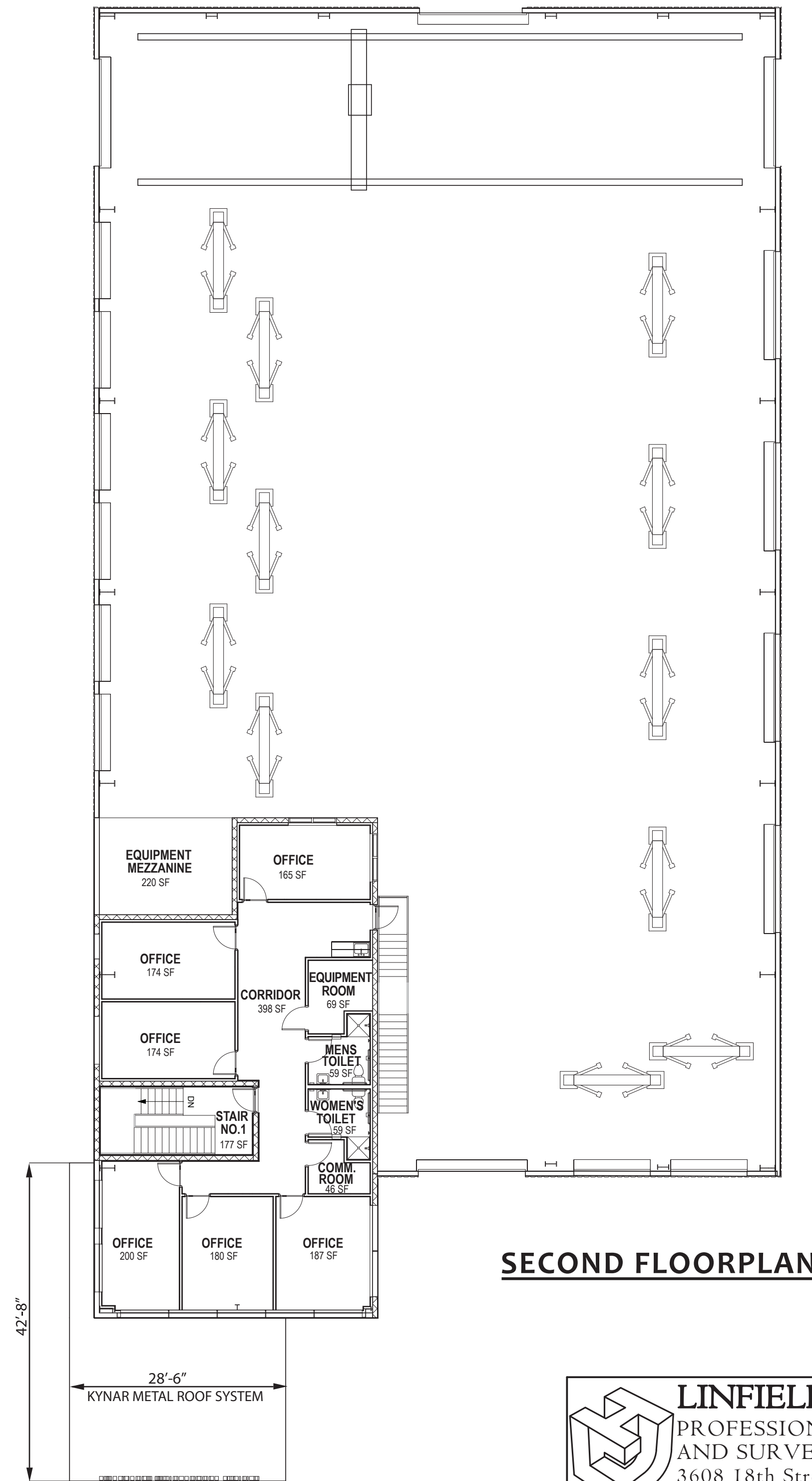
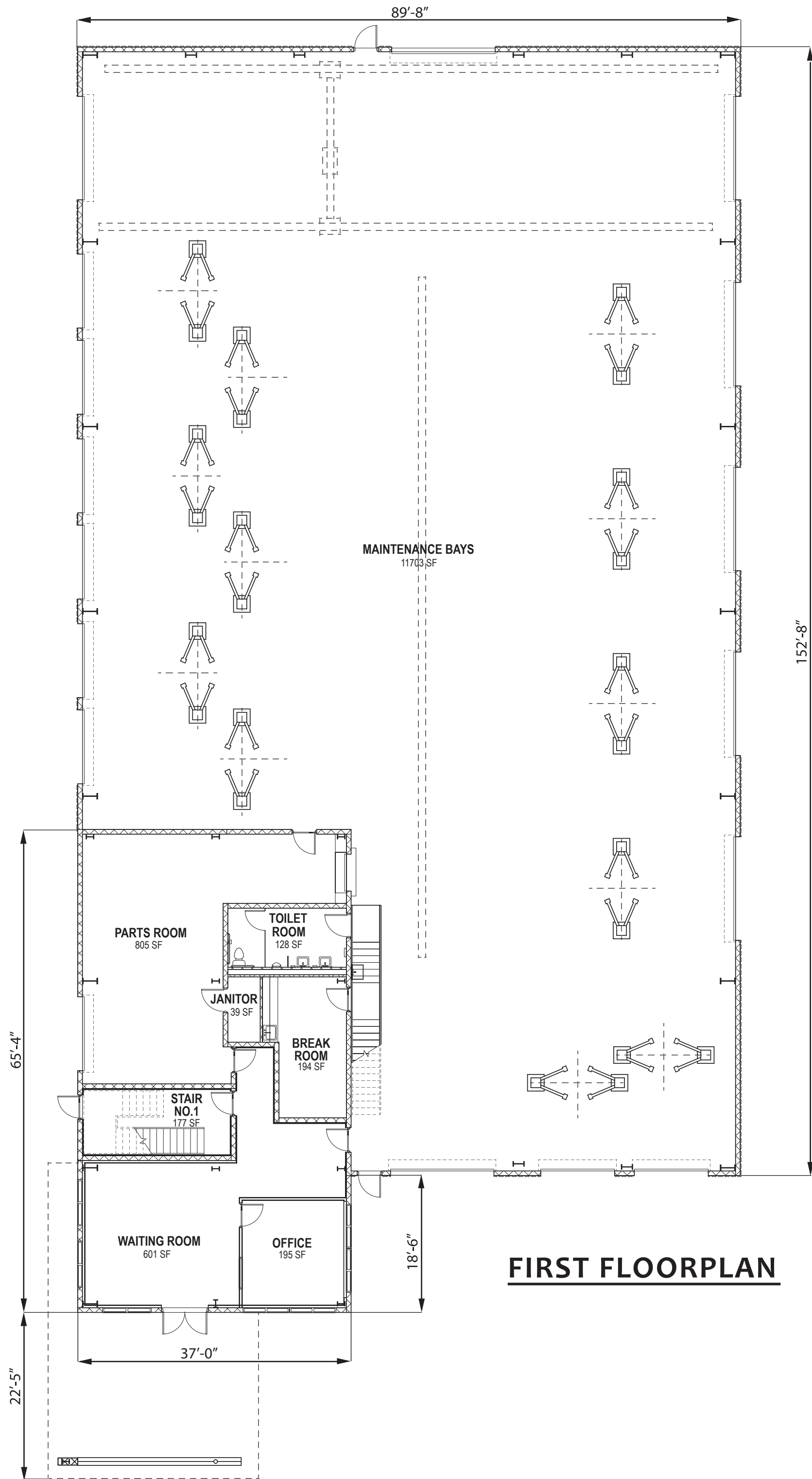


**LINFIELD, HUNTER & JUNIUS, INC.**  
PROFESSIONAL ENGINEERS, ARCHITECTS  
AND SURVEYORS  
3608 18th Street, Suite 200  
Metairie, Louisiana 70002

2011 by Linfield, Hunter & Junius, Inc.

# EMD - CENTRAL MAINTENANCE FACILITY

## CITY OF NEW ORLEANS



**LINFIELD, HUNTER & JUNIUS, INC.**  
 PROFESSIONAL ENGINEERS, ARCHITECTS  
 AND SURVEYORS  
 3608 18th Street, Suite 200  
 Metairie, Louisiana 70002