

⊗ SITE PLAN / ROOF PLAN
 SC: 1/16" = 1'-0"

AREA CALCULATIONS

1st floor: 4456 GROSS FLOOR AREA
 1678 GROSS B&B AREA
 2nd floor: 1790 GROSS FLOOR AREA
 1354 GROSS B&B AREA
 3rd floor: 972 GROSS FLOOR AREA
 0 GROSS B&B AREA
TOTAL BUILDING:
 7218 GROSS FLOOR AREA
 3032 GROSS B&B AREA
 42% BED AND BREAKFAST USE

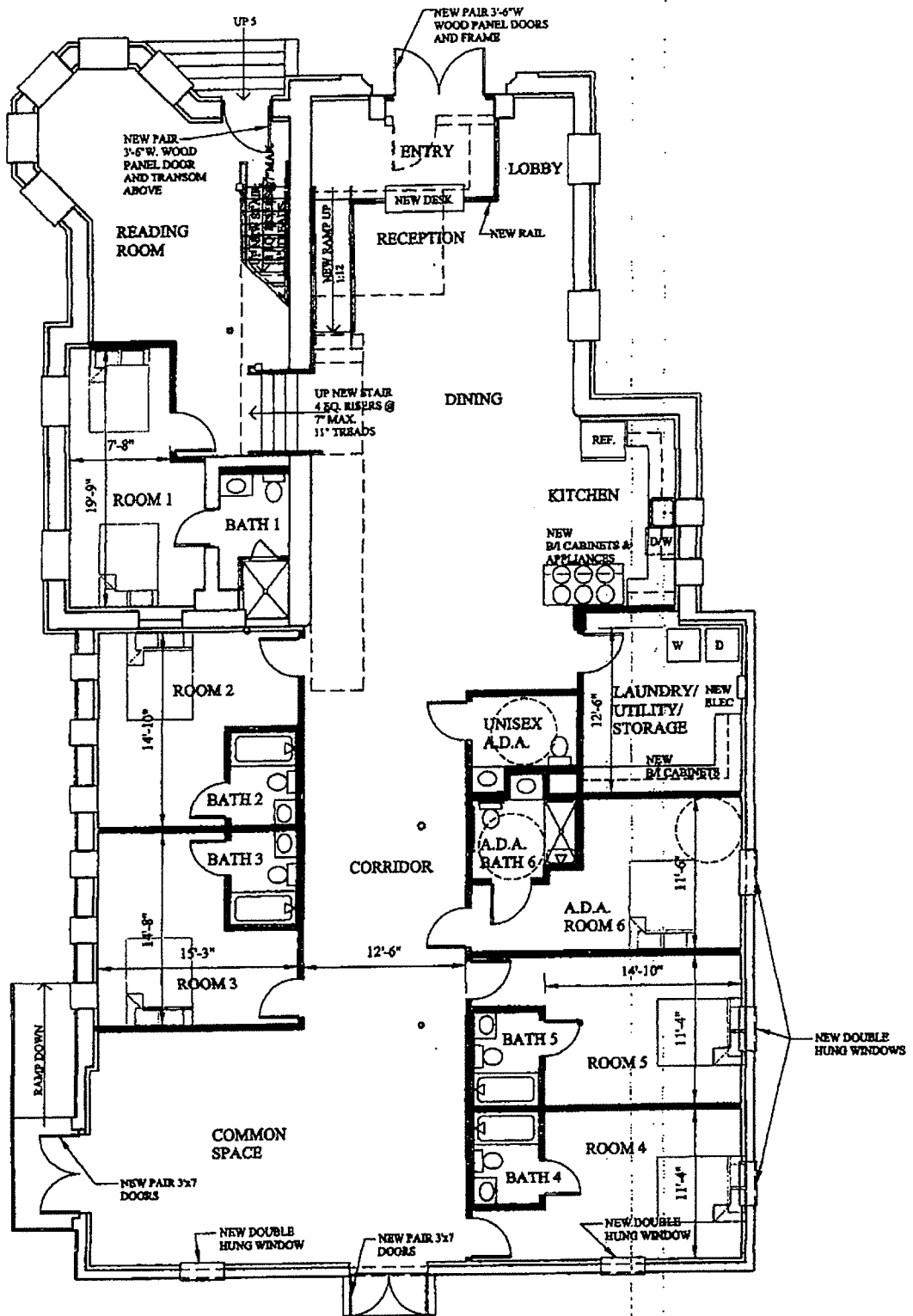


LKHarmon Architects
 A Professional Architectural Corporation
 6238 Argonne Boulevard
 New Orleans Louisiana 70124
 504.485.5876 harmon@lkharmonarchitects.com

RENOVATION of 2552 ST. PHILIP
NINE ROOM BED AND BREAKFAST

LKH#2714

8.19.2014
 pg 1 of 5



FIRST FLOOR PLAN
 SC: 1/8" = 1'-0"

LEGEND:

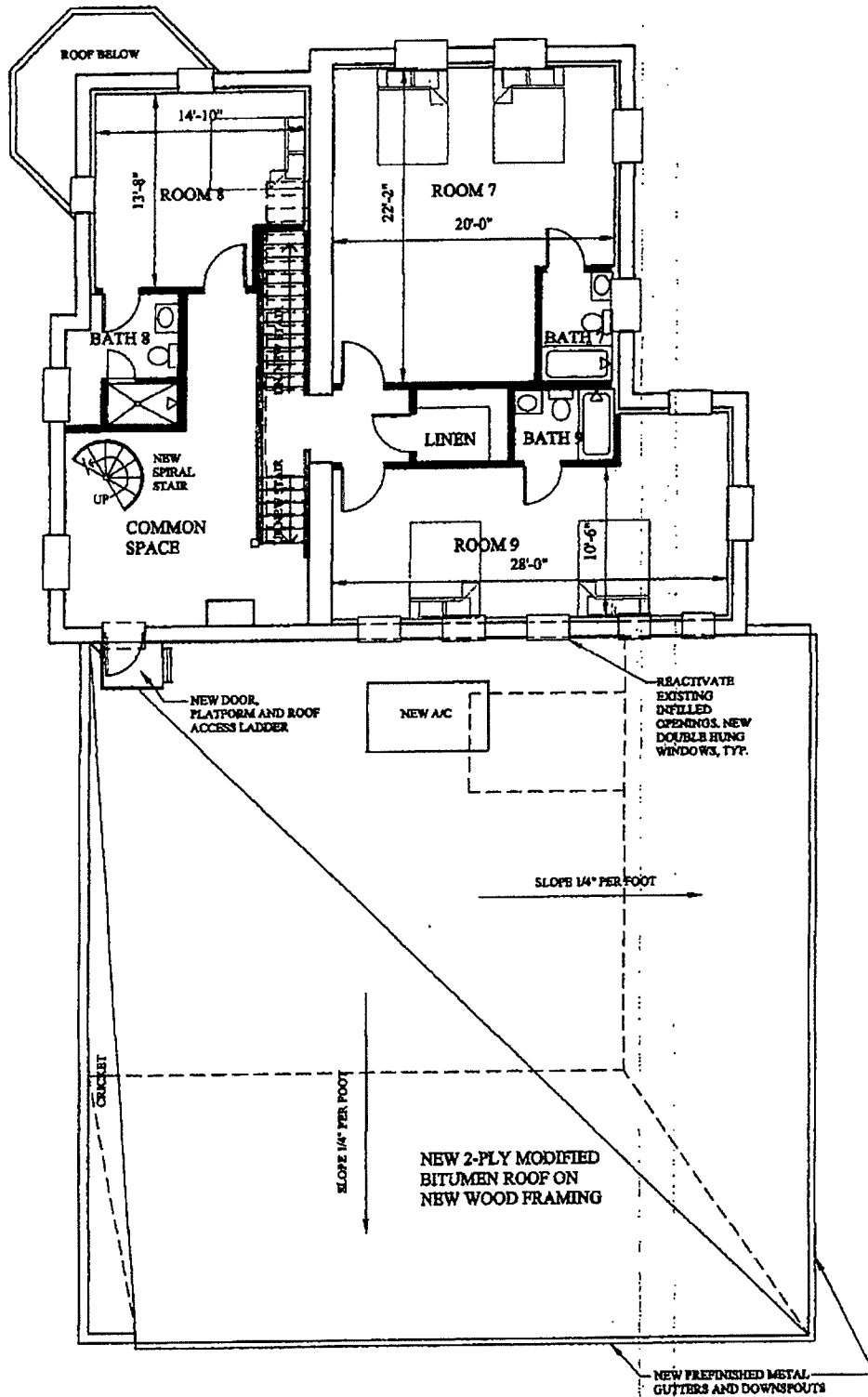
- NEW WALLS
- EXISTING WALLS
- DEMOLISH



LKHarmon Architects
 A Professional Architectural Corporation
 6238 Argonne Boulevard
 New Orleans Louisiana 70124
 504.485.5870 harmon@lkharmonarchitects.com

RENOVATION of 2552 ST. PHILIP
NINE ROOM BED AND BREAKFAST
 LKH#2714

8.19.2014
 pg 2 of 5



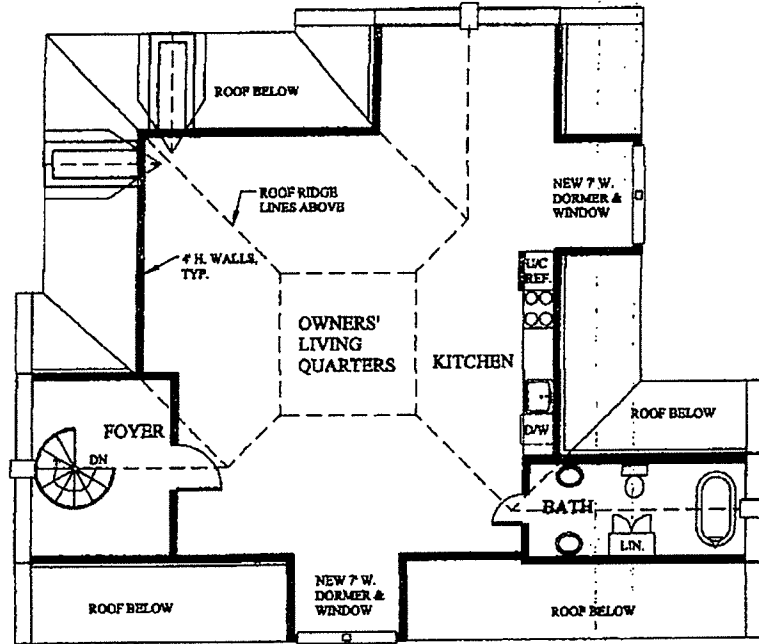
⊗ **SECOND FLOOR PLAN**
 SC: 1/8" = 1'-0"



LKHarmon Architects
 A Professional Architectural Corporation
 6238 Argonne Boulevard
 New Orleans Louisiana 70124
 504.486.5870 harmon@lkharmonarchitects.com

RENOVATION of 2552 ST. PHILIP
NINE ROOM BED AND BREAKFAST
 LKH#2714

8.19.2014
 pg 3 of 5



⊗ **THIRD FLOOR PLAN**
 SC: 1/8" = 1'-0"



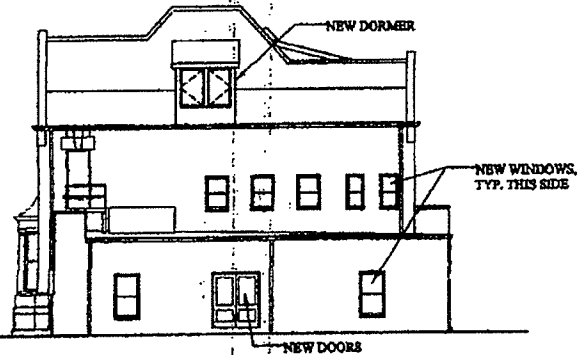
LKHarmon Architects
 A Professional Architectural Corporation
 6238 Argonne Boulevard
 New Orleans Louisiana 70124
 504.455.5870 harmon@lkharmonarchitects.com

RENOVATION of 2552 ST. PHILIP
NINE ROOM BED AND BREAKFAST
 LKH#2714

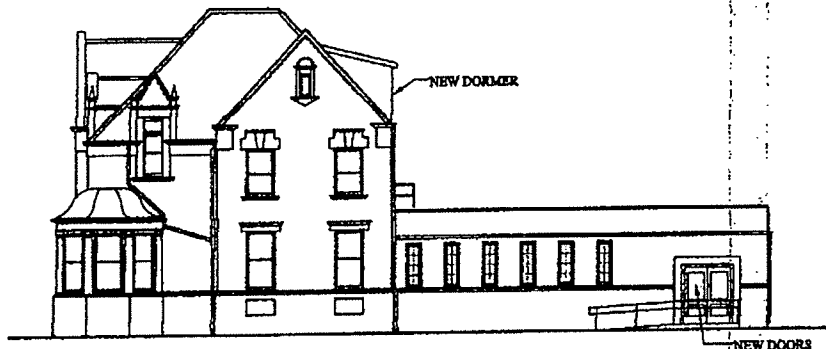
8.19.2014
 pg 4 of 5



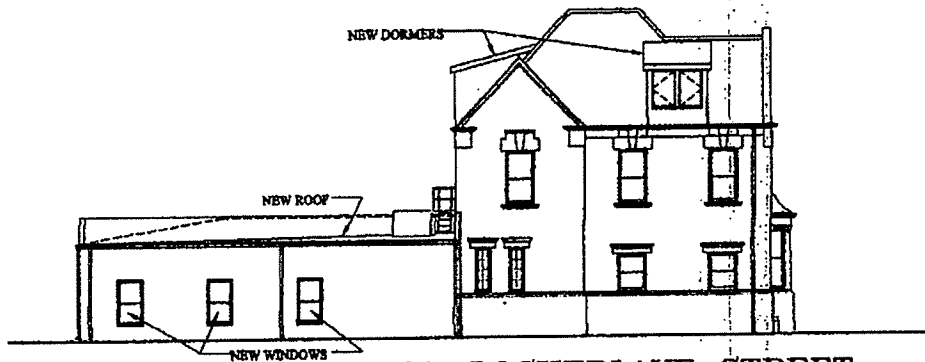
**ST. PHILIP STREET
FRONT ELEVATION**
SC: 1/16" = 1'-0"



**DUMAINE STREET
REAR ELEVATION**
SC: 1/16" = 1'-0"



**N. DORGENOIS STREET
SIDE ELEVATION**
SC: 1/16" = 1'-0"



**N. ROCHEBLAVE STREET
INTERIOR SIDE ELEVATION**
SC: 1/16" = 1'-0"



LKHarmon Architects
A Professional Architectural Corporation
8238 Argonne Boulevard
New Orleans Louisiana 70124
504.485.5570 harmon@lkharmonarchitects.com

**RENOVATION of 2552 ST. PHILIP
NINE ROOM BED AND BREAKFAST**
LKH#2714

8.19.2014
pg 5 of 5