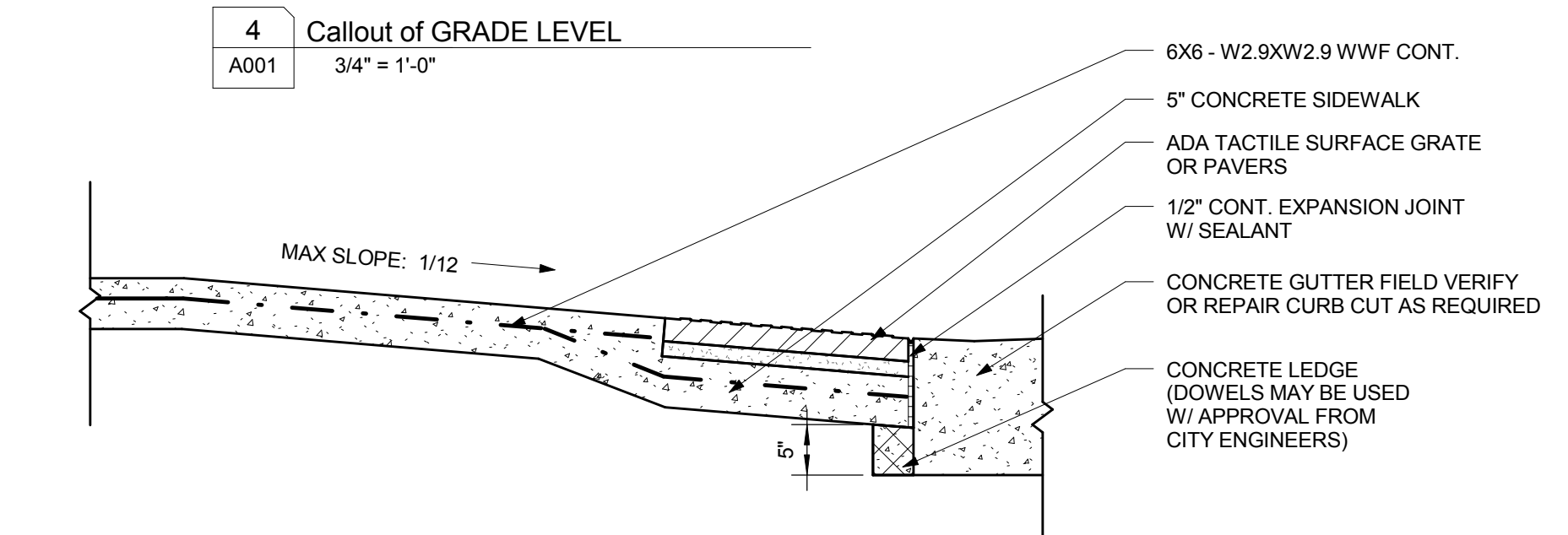
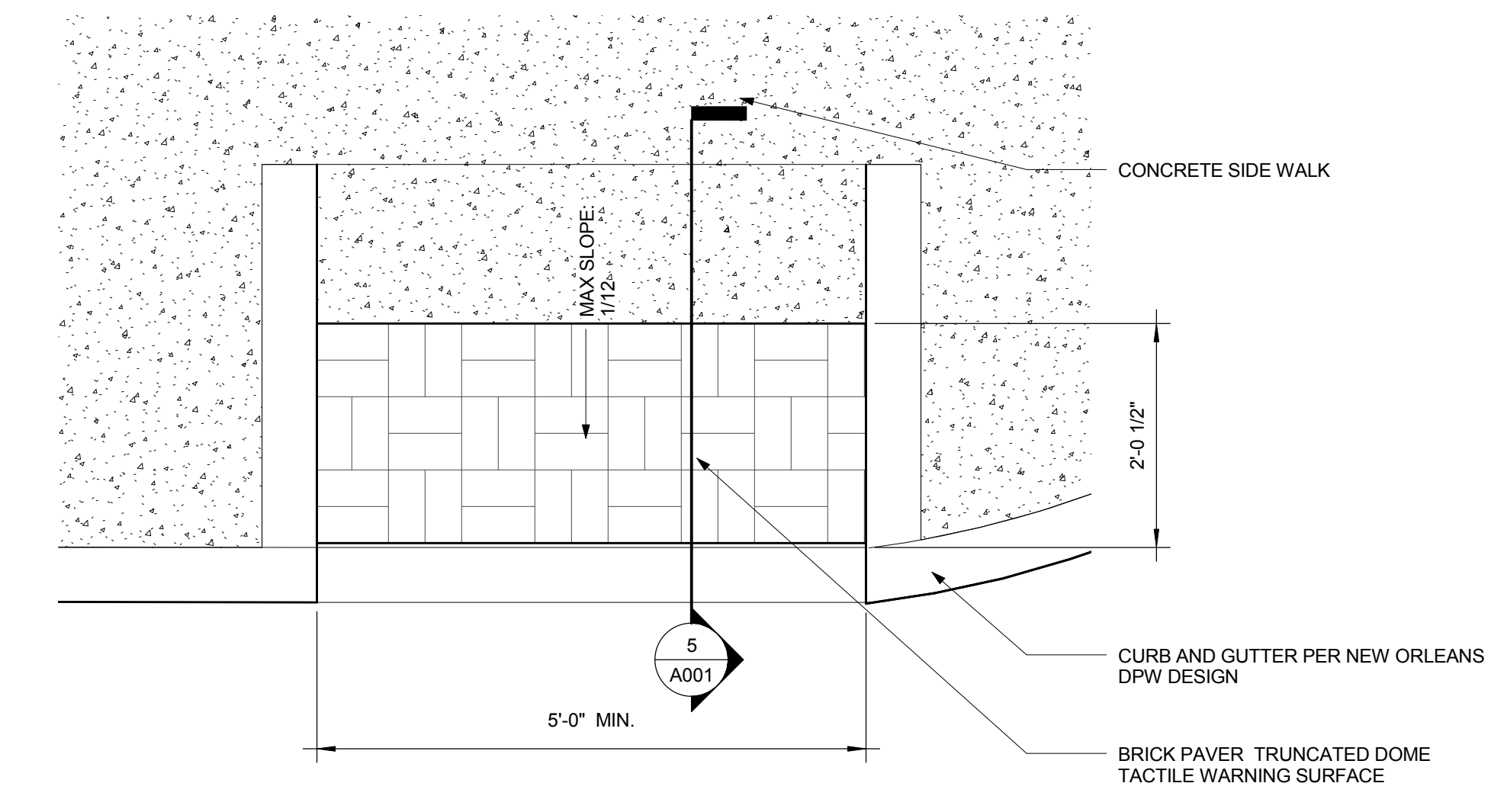
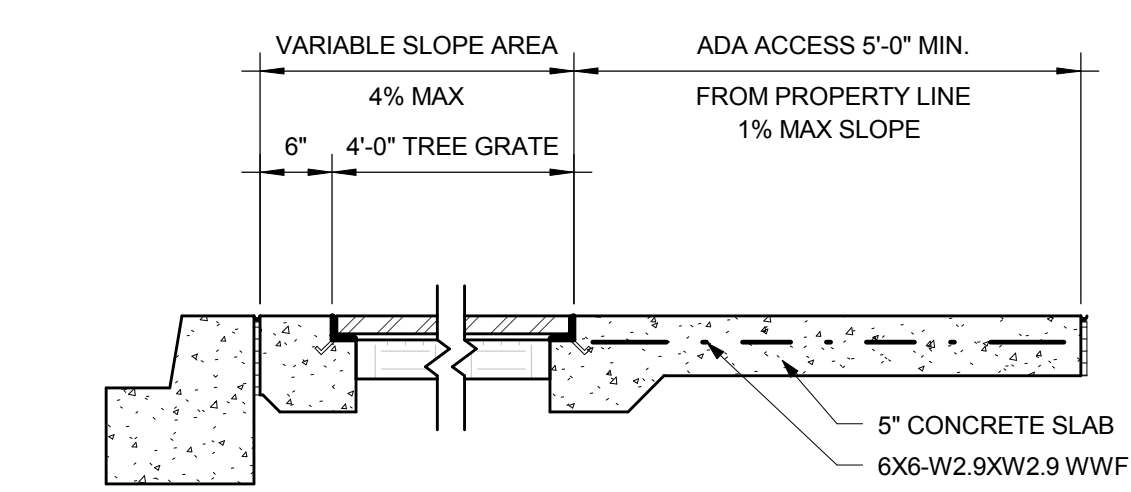
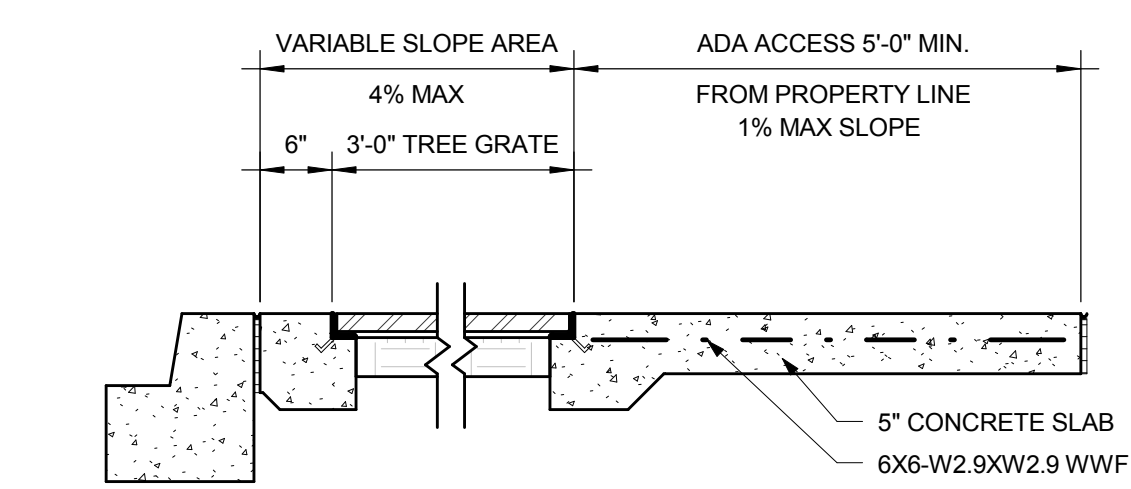


**GENERAL NOTES:**

- ALL SITE DIMENSIONS TO BE VERIFIED BY A CERTIFIED SURVEY.
- COMPACT SPACES ARE LOCATED AT COLUMNS.
- TYP. PARKING SPACE 8'-6" X 18'-0".
- COMPACT PARKING SPACE 7'-6" X 16'-0".
- TYP. ADA SPACE 10'-0" X 18'-0".
- 7 CARS IN QUEUING LANE FOR MAIN PARKING GARAGE.
- 1 CAR FOR QUEUING FOR PERDIDO ENTRANCE

**PROJECT SUMMARY**

GROSS AREA	
1ST FLOOR	19,468 SF
2ND -8TH FLOORS	26,178 X 7 SF (183,246 SF)
8TH FLR. TURN ARND.	897 SF
<b>TOTAL</b>	<b>203,611 SF</b>
PARKING SPACES PER LEVEL	
1ST FLOOR	57
2ND-7TH FLOORS	78 (78 SPACES X6 FLRS = 468)
8TH FLOOR	48
<b>TOTAL</b>	<b>573</b>
PARKING SPACE TYPE	
ADA	7
VAN ADA	2
TYP. PARK	414
COMPACT SPACES	150 ±
<b>TOTAL</b>	<b>573 (343 SF/SPACE FLOORS 2-8)</b>



**woodward design group**  
P.O. BOX 13847 NEW ORLEANS, LOUISIANA 70185  
504.882.6445 TEL: WOODWARDDESIGNBUILD.COM

**Donald Font**  
ARCHITECT A.L.A., LEED AP

**O'Keefe Parking Garage**  
New Orleans, Louisiana

**NOT FOR CONSTRUCTION**

job no. 6022-332  
drawn by JMB  
checked by DFF  
date 11/10/2014  
for CONDITIONAL USE APPLICATION  
revisions to for

sheet contents  
ARCHITECTURAL SITE PLAN

**A001**

Note: If any items herein are not understandable or clear as to intent, contractor must verify the method of record for clarification and/or supplemental information prior to actual installation.

GENERAL NOTES:

- 1. 57 PARKING SPACES



woodward design group  
 P.O. BOX 13847 NEW ORLEANS, LOUISIANA 70125  
 504.852.6445 TEL. WOODWARDDESIGNBUILD.COM  
 Donald Font  
 ARCHITECT A.L.A. LEED AP

O'Keefe Parking Garage

New Orleans, Louisiana

NOT FOR CONSTRUCTION

job no. 6022-332

drawn by JMB

checked by DFF

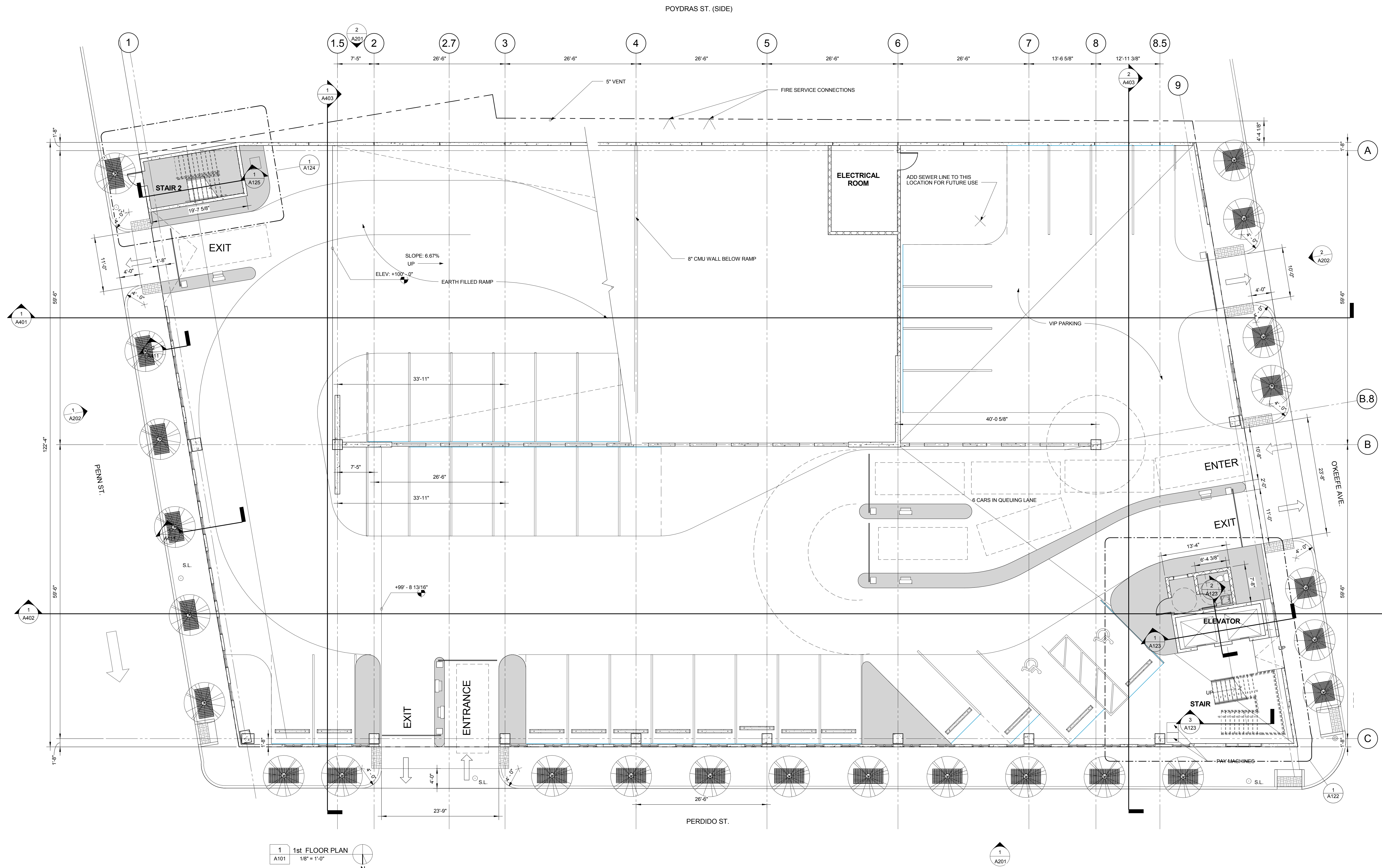
date 11/10/2014

for CONDITIONAL USE APPLICATION

revisions to for

sheet contents FIRST FLOOR PLAN

A101



1 1st FLOOR PLAN  
 A101 1/8" = 1'-0"



**GENERAL NOTES:**  
 1. 78 PARKING SPACES PER FLOOR.



**woodward design group**  
 P.O. BOX 13847 NEW ORLEANS, LOUISIANA 70118  
 504.882.6445 TEL. WOODWARDDESIGNBUILD.COM  
**Donald Font**  
 ARCHITECT A.L.A., LEED AP

**O'Keefe Parking Garage**  
 New Orleans, Louisiana

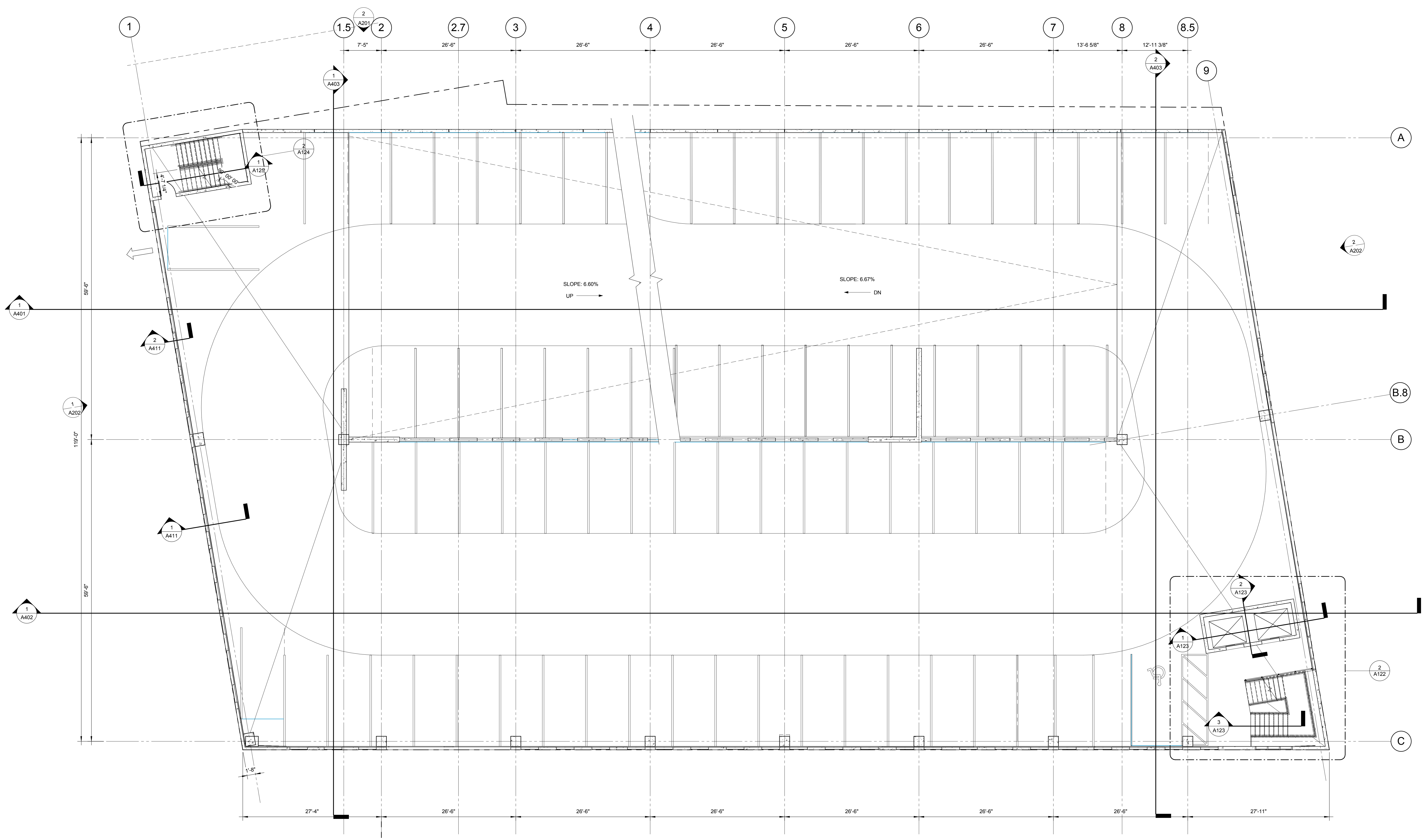
**NOT FOR CONSTRUCTION**

job no. 6022-332  
 drawn by JMB  
 checked by DFF

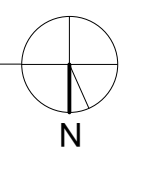
date 11/10/2014  
 for CONDITIONAL USE APPLICATION  
 revisions  
 no. for

sheet contents  
 TYP. FLOOR PLAN

**A102**



1 2nd-7th FLOOR PLANS  
 A102 1/8" = 1'-0"



**GENERAL NOTES:**  
 1. 48 PARKING SPACES



**woodward design group**  
 P.O. BOX 13847 NEW ORLEANS, LOUISIANA 70118  
 504.882.6445 TEL. WOODWARDDESIGNBUILD.COM  
**Donald Font**  
 ARCHITECT A.L.A. LEED AP

**O'Keefe Parking Garage**  
 New Orleans, Louisiana

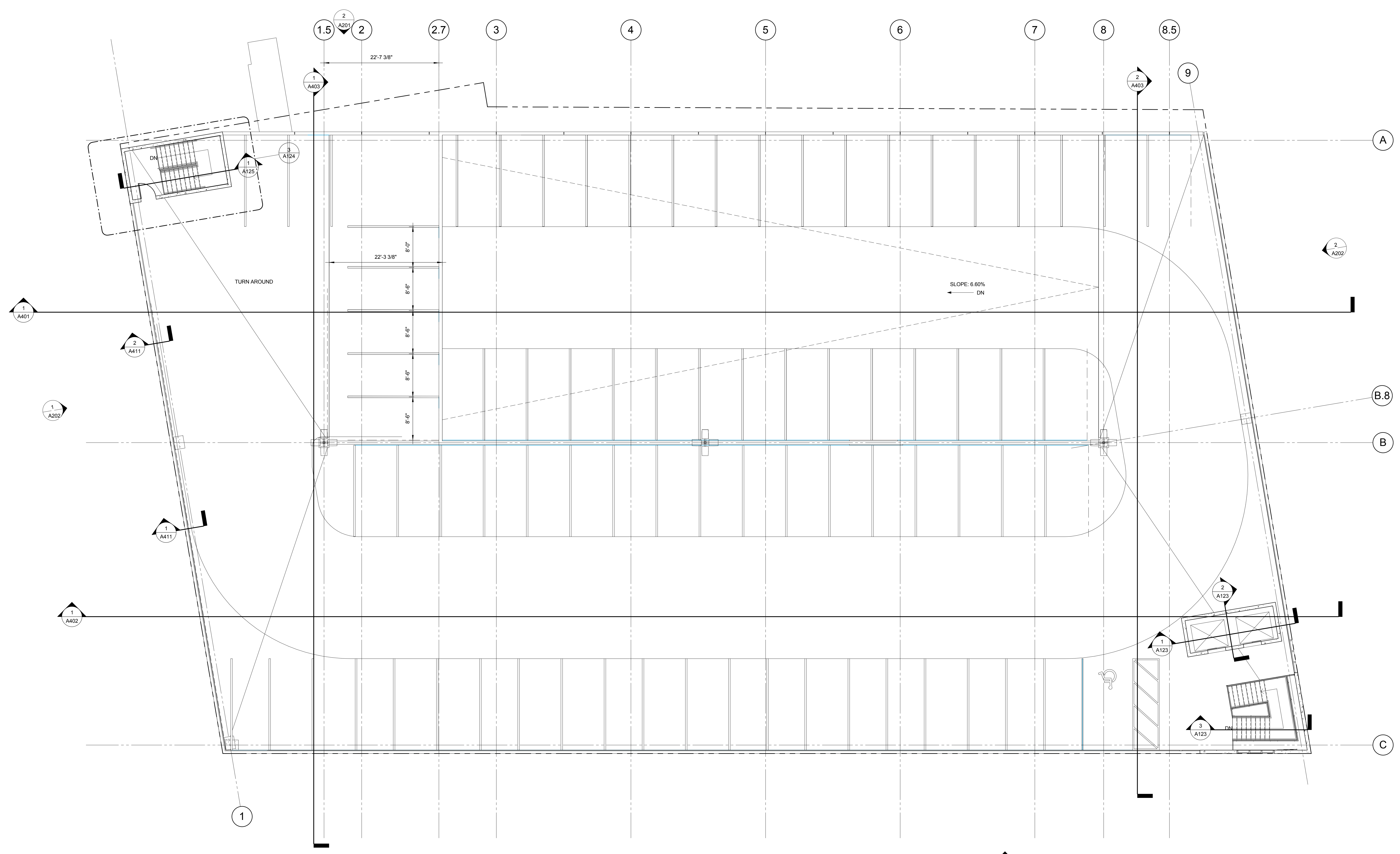
**NOT FOR CONSTRUCTION**

job no. 6022-332  
 drawn by JMB  
 checked by DFF

date 11/10/2014  
 for CONDITIONAL USE APPLICATION  
 revisions  
 no. for

sheet contents  
 EIGHTH FLOOR PLAN

**A104**



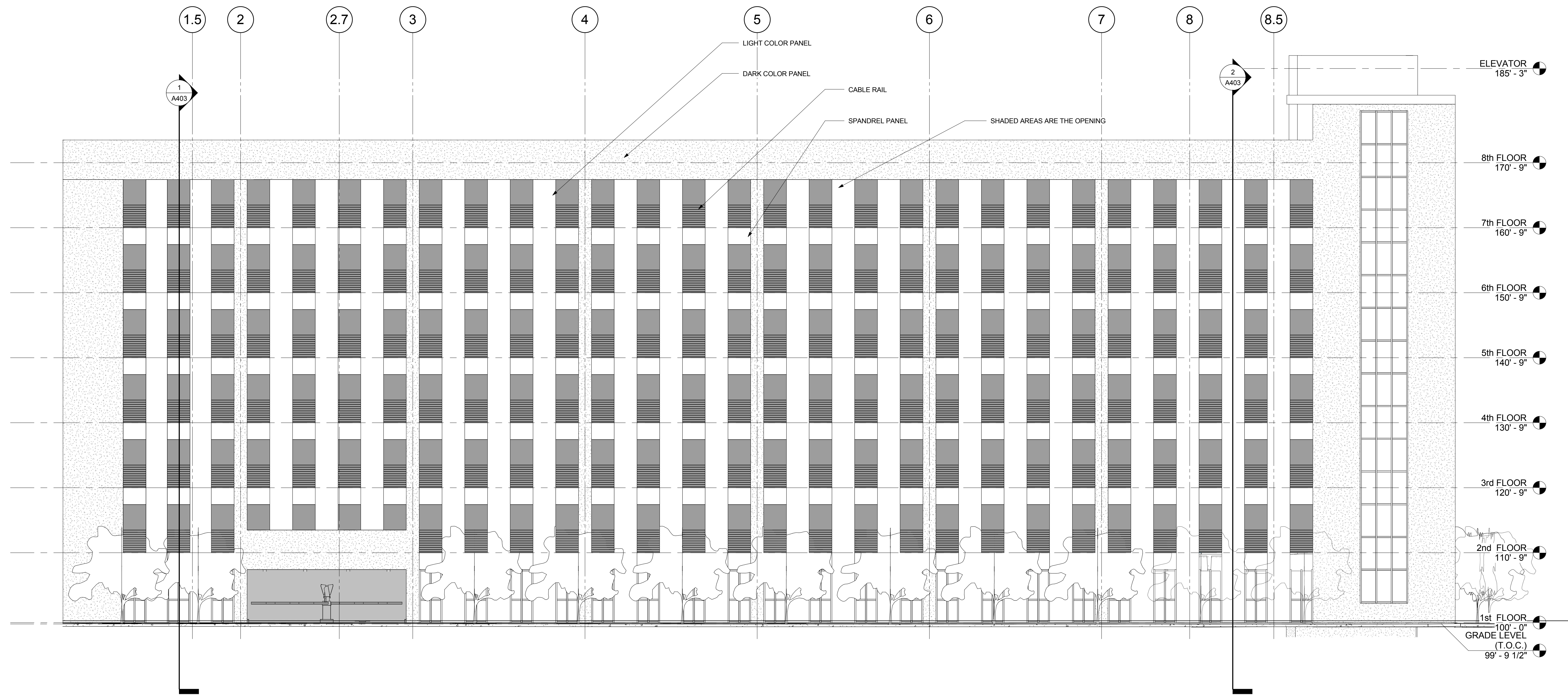
1 8th FLOOR PLAN  
 A104 1/8" = 1'-0"

41 PARKING SPACES

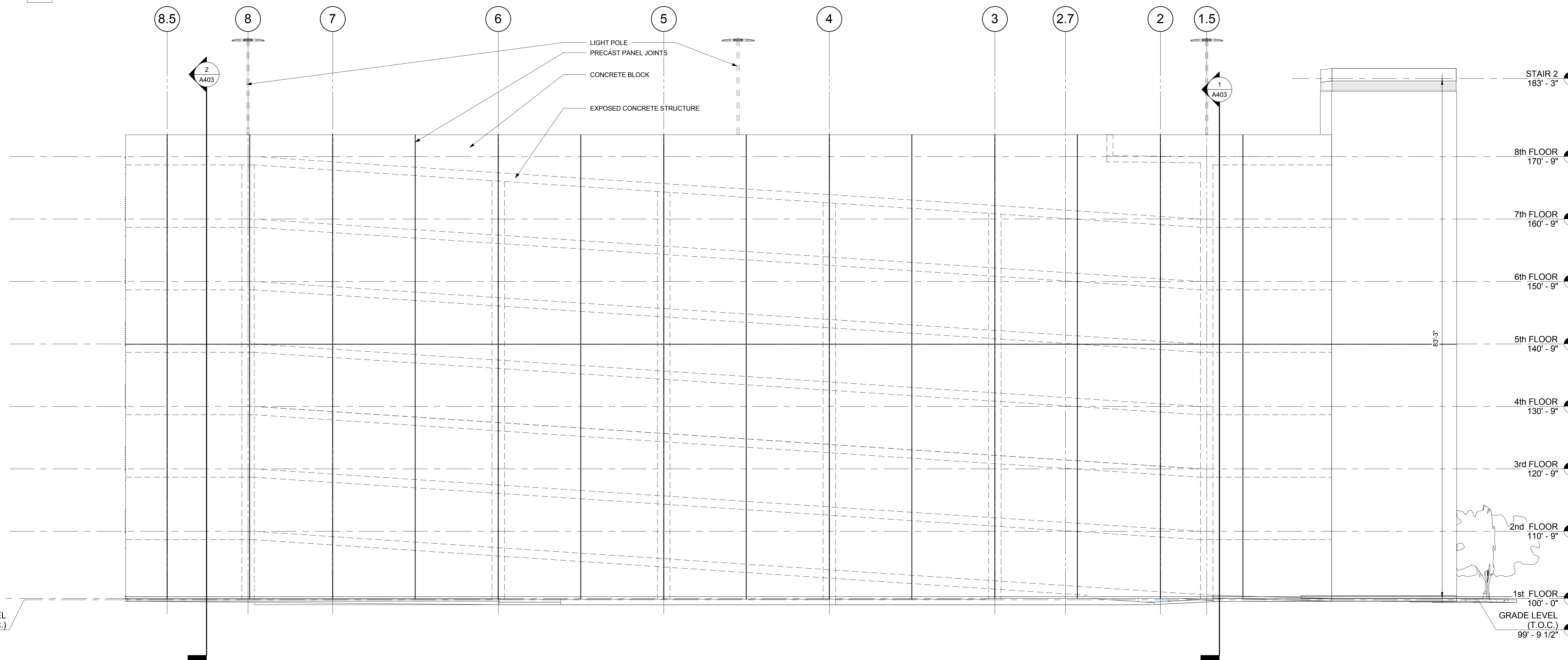
Note: If any items herein are not understandable or clear in its intent, contractor must verify the method of record for clarification and/or supplemental information prior to actual installation.

**GENERAL NOTES:**

- PANELS TO BE STAINED DARK BROWN IN COLOR AT PLANT.



**1 NORTH ELEVATION (PERDIDO ST.)**  
A201 1/8" = 1'-0"



**2 SOUTH ELEVATION (EXISTING BLDG.)**  
A201 1/8" = 1'-0"



**woodward design group**  
P.O. BOX 13847 NEW ORLEANS, LOUISIANA 70118  
504.852.6445 TEL. WOODWARDDESIGNBUILD.COM

Donald Font  
ARCHITECT A.L.A. LEED AP

O'Keefe Parking Garage

New Orleans, Louisiana

**NOT FOR CONSTRUCTION**

job no.

6022-332

drawn by

JMB

checked by

DPF

date

11/10/2014

for CONDITIONAL USE

APPLICATION

revisions

to for

.....

.....

.....

.....

.....

.....

sheet contents

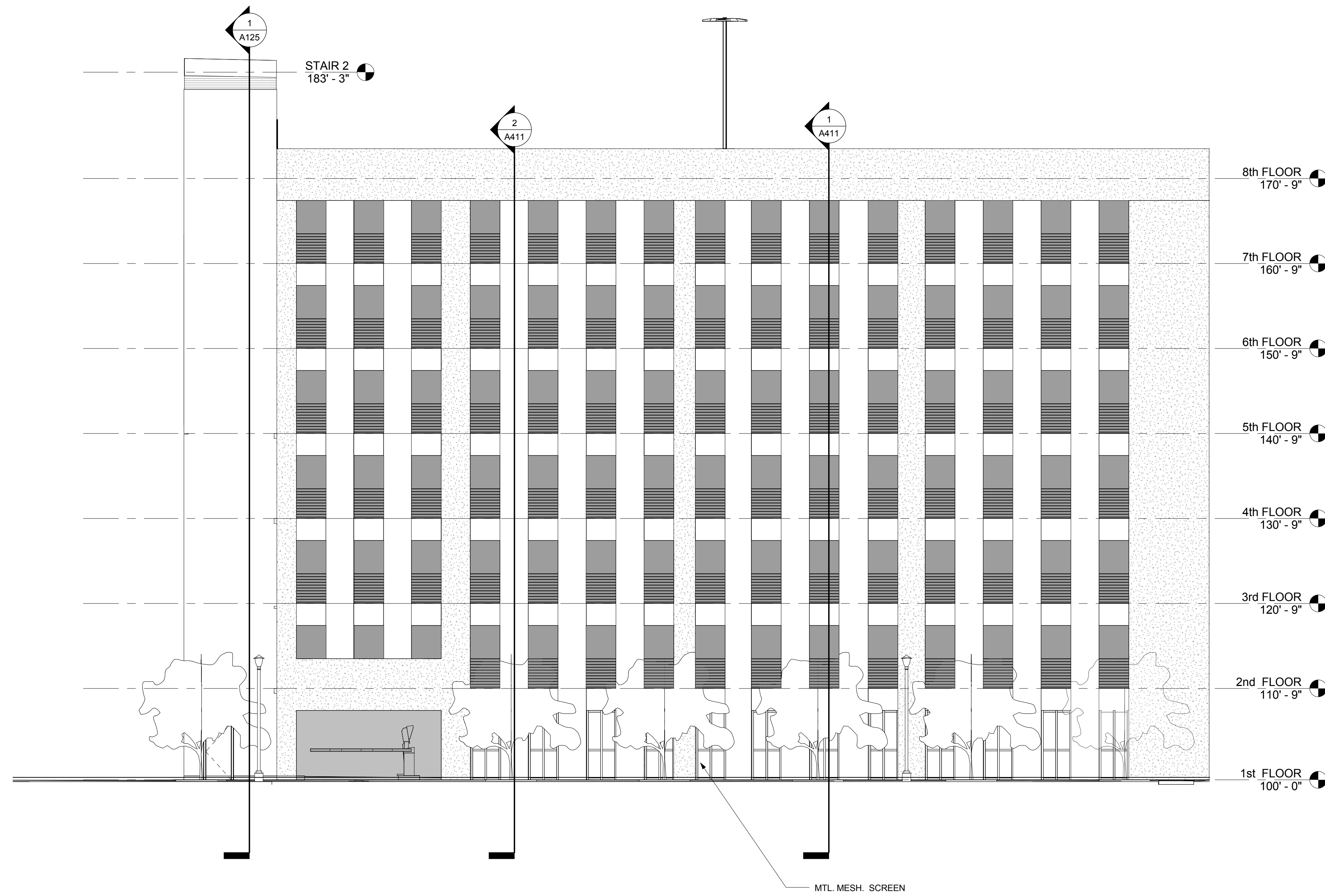
ELEVATIONS

**A201**

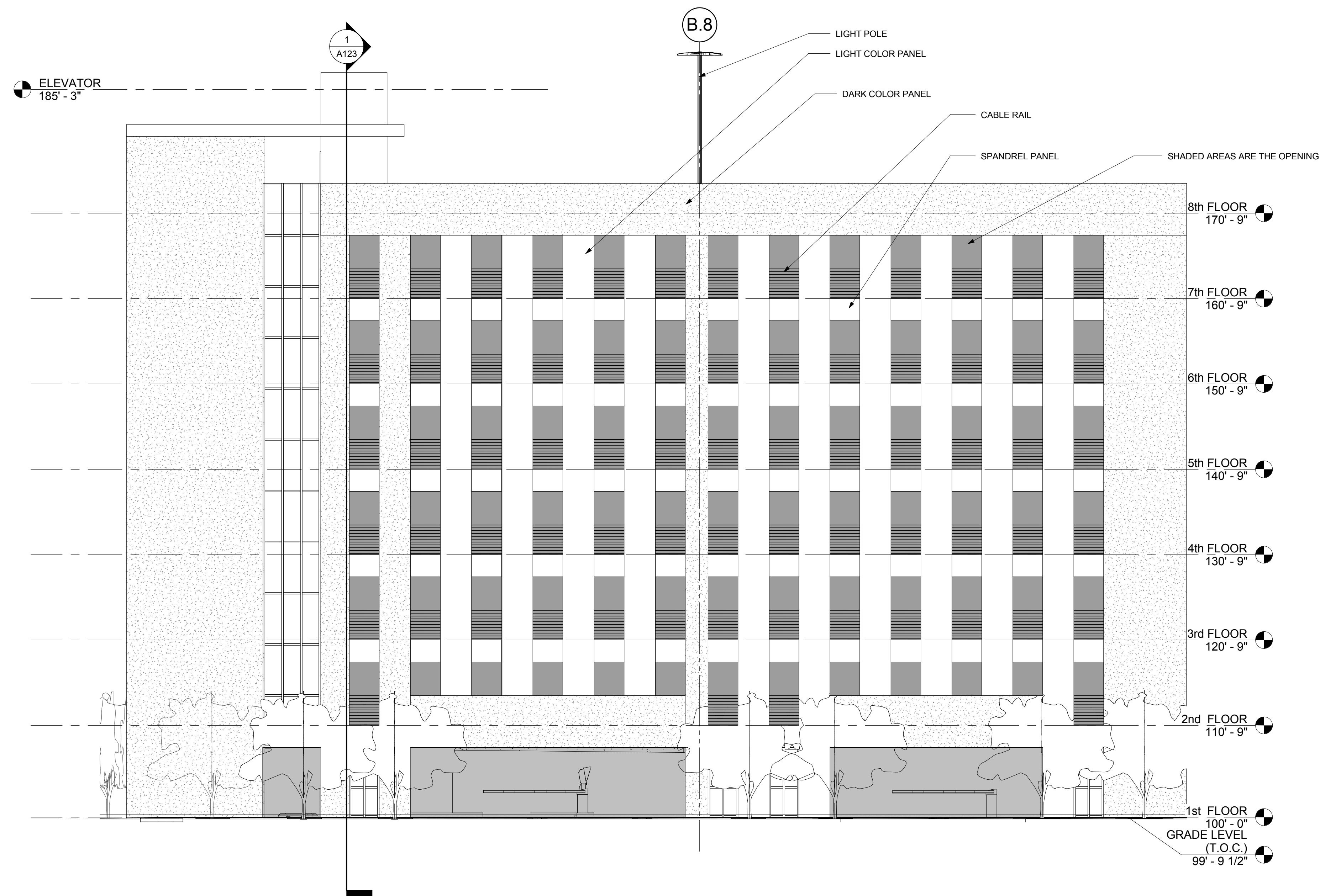
Scale of this drawing shall not be relied upon or used as a basis for construction without the written approval of the architect. The contractor shall verify the accuracy of all dimensions and conditions of the existing building and site prior to construction.

**GENERAL NOTES:**

- PANELS TO BE STAINED DARK BROWN IN COLOR AT PLANT.



1 EAST ELEVATION (PENN ST.)  
A202 1/8" = 1'-0"



2 WEST ELEVATION (O'KEEFE AVE)  
A202 1/8" = 1'-0"



woodward design group  
P.O. BOX 13847 NEW ORLEANS, LOUISIANA 70118  
504.852.6445 TEL. WOODWARDDESIGNBUILD.COM

Donald Font  
ARCHITECT A.L.A., LEED AP

O'Keefe Parking Garage

New Orleans, Louisiana

**NOT FOR CONSTRUCTION**

job no.

6022-332

drawn by

JMB

checked by

DFF

date

11/10/2014

for CONDITIONAL USE

APPLICATION

revisions

no for

.....

.....

.....

.....

.....

.....

sheet contents

ELEVATIONS

A202

Note: If any items herein are not understandable or clear in any way, contractor must verify the architect's intent for clarification and/or supplemental information prior to actual installation.