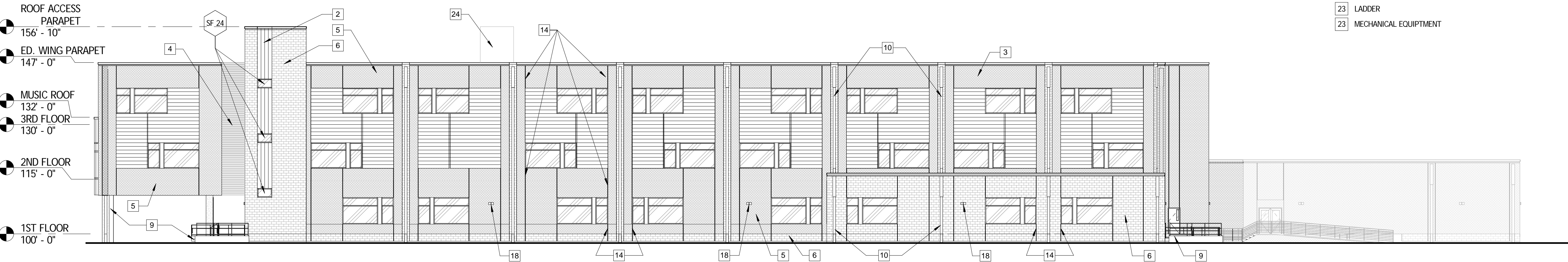


1 NORTH ELEVATION  
A301 1/16" = 1'-0"



2 EAST ELEVATION  
A301 1/16" = 1'-0"



3 CLASSROOM WING SOUTH 1 ELEVATION  
A301 1/16" = 1'-0"

#### ELEVATION KEYNOTES

- |    |  |
|----|--|
| 1  | METAL WALL PANEL, TYPE A                             |
| 2  | METAL WALL PANEL, TYPE B                             |
| 3  | METAL WALL PANEL, TYPE C                             |
| 4  | METAL WALL PANEL, TYPE D                             |
| 5  | MASONRY UNIT, TYPE A                                 |
| 6  | MASONRY UNIT, TYPE B                                 |
| 7  | ALUMINUM CANOPY                                      |
| 8  | EQUIPMENT SCREEN                                     |
| 9  | GROUT CLEANED FINISHED CONCRETE AT ALL EXPOSED AREAS |
| 10 | ALUMINUM DOWNSPOUT                                   |
| 11 | ALUMINUM SCUPPER & CONDUCTOR HEAD                    |
| 12 | ALUMINUM DOWNSPOUT BOOT                              |
| 13 | BUILDING EXPANSION JOINT                             |
| 14 | BRICK EXPANSION JOINT                                |
| 15 | METAL PANEL JOINT                                    |
| 16 | ALUMINUM SUNSHADE                                    |
| 17 | ARCHITECTURAL LOUVER                                 |
| 18 | LIGHT FIXTURE  |
| 19 | OVERHEAD COILING INSULATED DOOR                      |
| 20 | METAL COLUMN COVER                                   |
| 21 | EXHUST FAN   |
| 22 | ALUMINUM COMPOSITE PANEL SYSTEM                      |
| 23 | LADDER   |
| 24 | MECHANICAL EQUIPMENT                                 |

ARCHITECT'S  
SEAL:

**LACHIN ♦ OUBRE & Associates**

ARCHITECTS PLANNERS  
PROJECT MANAGERS  
A PROFESSIONAL CORPORATION  
3000 West Esplanade Ave., Suite 302, Metairie, La 70002  
Ph: 504-835-8013 Fax: 504-835-8034

Recovery School District

**SHERWOOD FOREST SCHOOL**

4801 MAID MARION DRIVE  
NEW ORLEANS, ORLEANS PARISH LOUISIANA

DRAWING TITLE:  
BUILDING  
ELEVATIONS

PROJECT No: 1308  
CHECK BY: Checker  
DRAWN BY: L.O.A.  
DATE: JANUARY 17, 2014  
SHEET No:

**A301**