

MATERIALS KEYING/ GENERAL NOTES

| No. | Description | Date |
|-----|-------------|------|
| | | |
| | | |
| | | |
| | | |
| | | |

KEY PLAN

Mathes Brierre
ARCHITECTS

201 St. Charles Avenue, Forty First Floor
New Orleans, Louisiana 70170-4100
Voice. 504. 586. 9303. Fax. 504. 582. 1305

PROJECT TITLE

PARTIAL RENOVATION OF
THE SECOND FLOOR OF ST.
MATTHIAS SCHOOL FOR
THE BROADMOOR ARTS &
WELLNESS CENTER AT
BLESSED TRINITY ROMAN
CATHOLIC CHURCH

100% DESIGN DEVELOPMENT SET

| | | | |
|-------------|-----|------------|-------------|
| DESIGNED BY | LTL | CHECKED BY | PP |
| DRAWN BY | LTL | DATE | MAY 6, 2014 |

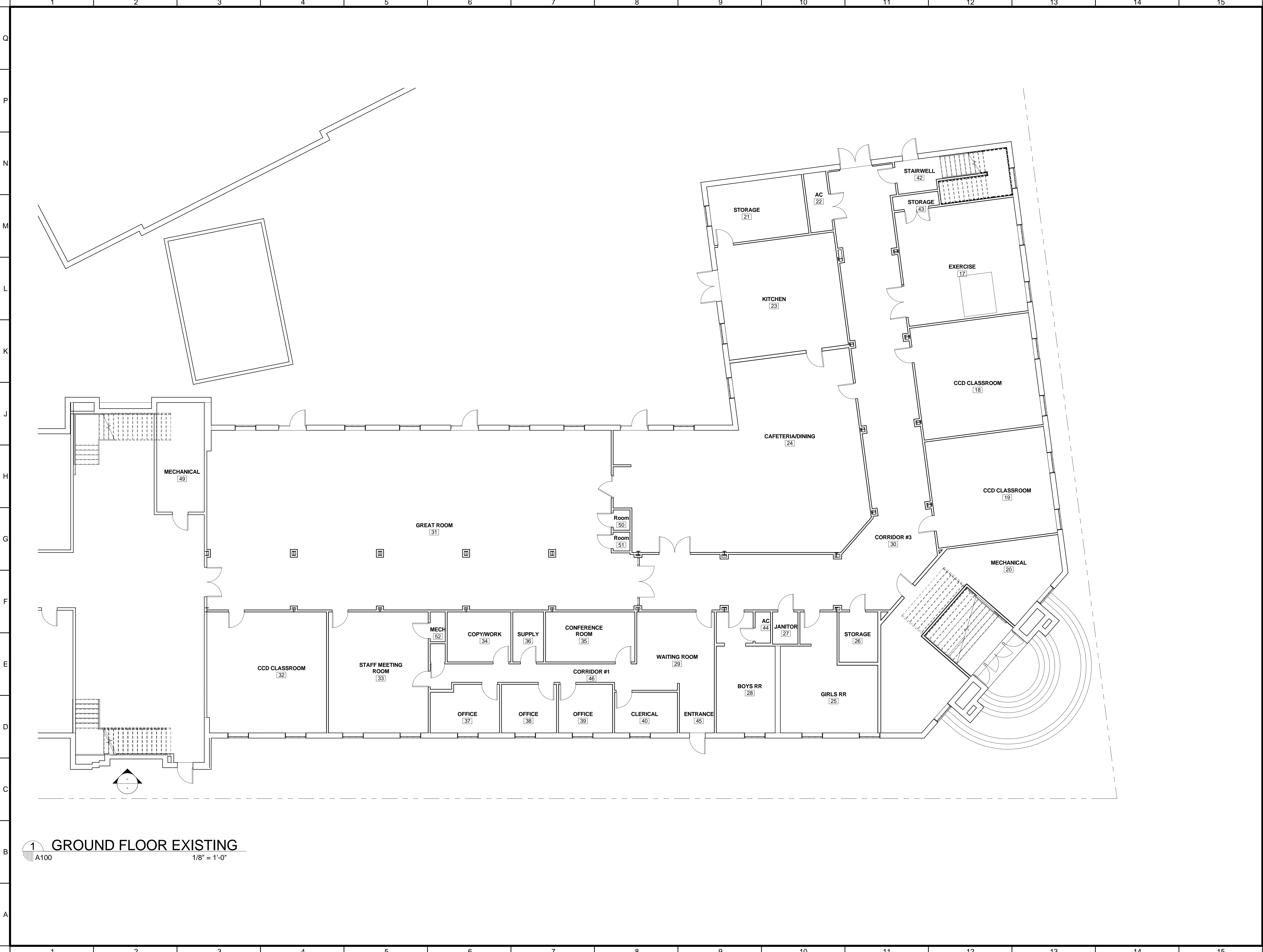
SHEET TITLE

PROJECT NO.

10939

SHEET NO.

A051



1 GROUND FLOOR EXISTING
1/8" = 1'-0"

MATERIALS KEYING/ GENERAL NOTES

| No. | Description | Date |
|-----|-------------|------|
| | | |
| | | |
| | | |
| | | |

KEY PLAN

Mathes Brierre

ARCHITECTS

201 St. Charles Avenue, Forty First Floor
New Orleans, Louisiana 70170-4100
Voice. 504. 586. 9303. Fax. 504. 582. 1305

PROJECT TITLE

PARTIAL RENOVATION OF
THE SECOND FLOOR OF ST.
MATTHIAS SCHOOL FOR
THE BROADMOOR ARTS &
WELLNESS CENTER AT
BLESSED TRINITY ROMAN
CATHOLIC CHURCH

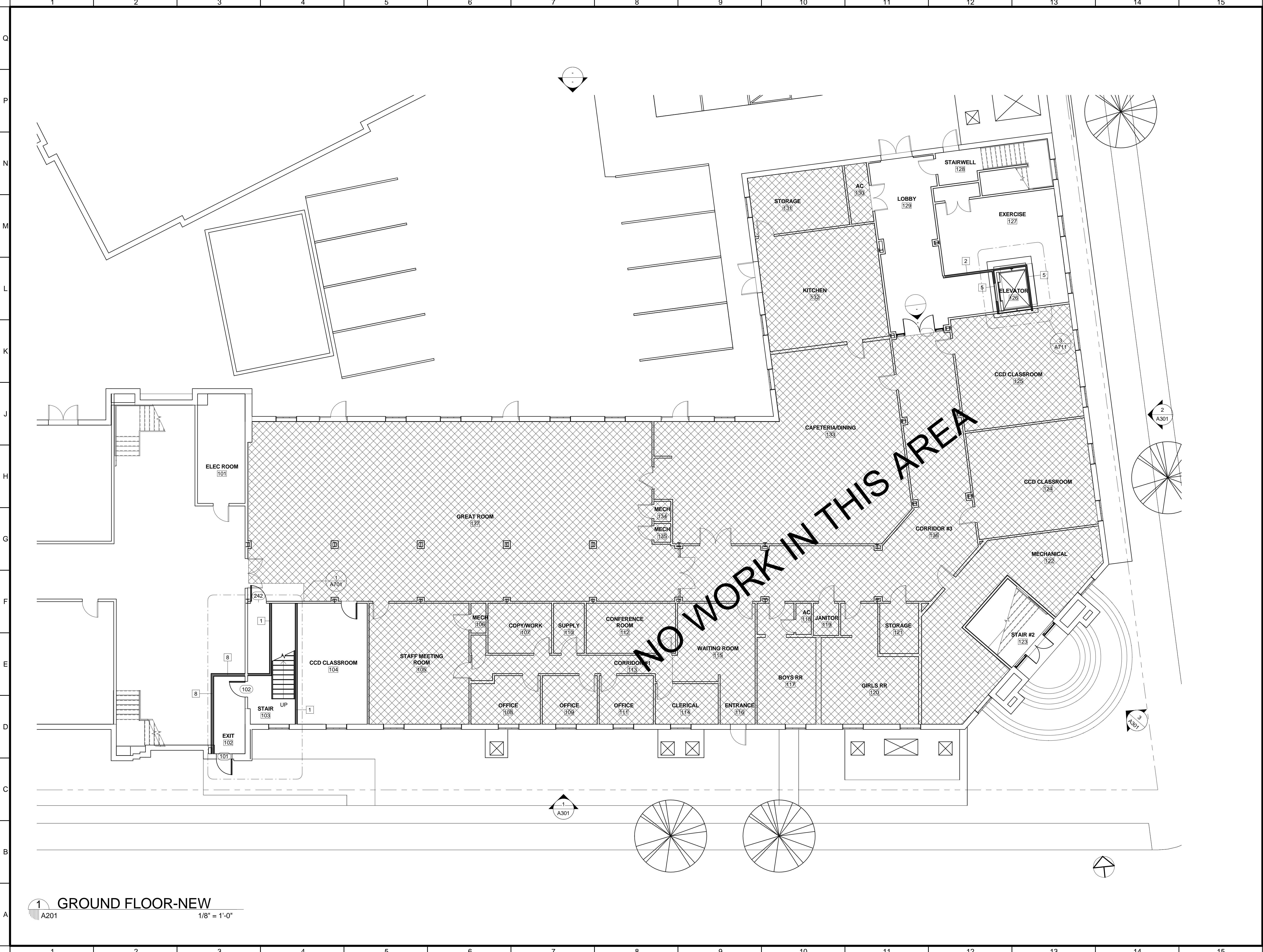
100% DESIGN DEVELOPMENT SET

| | | | |
|-------------|-----|------------|-------------|
| DESIGNED BY | LTL | CHECKED BY | PP |
| DRAWN BY | LTL | DATE | MAY 6, 2014 |

SHEET TITLE

FIRST FLOOR EXISTING PLAN

| | |
|-------------|-----------|
| PROJECT NO. | SHEET NO. |
| 10939 | A100 |



1 GROUND FLOOR-NEW
1/8" = 1'-0"

MATERIALS KEYING/ GENERAL NOTES

| No. | Description | Date |
|-----|-------------|------|
| | | |
| | | |
| | | |
| | | |

KEY PLAN

Mathes Brierre
ARCHITECTS

201 St. Charles Avenue, Forty First Floor
New Orleans, Louisiana 70170-4100
Voice. 504. 586. 9303. Fax. 504. 582. 1305

PROJECT TITLE

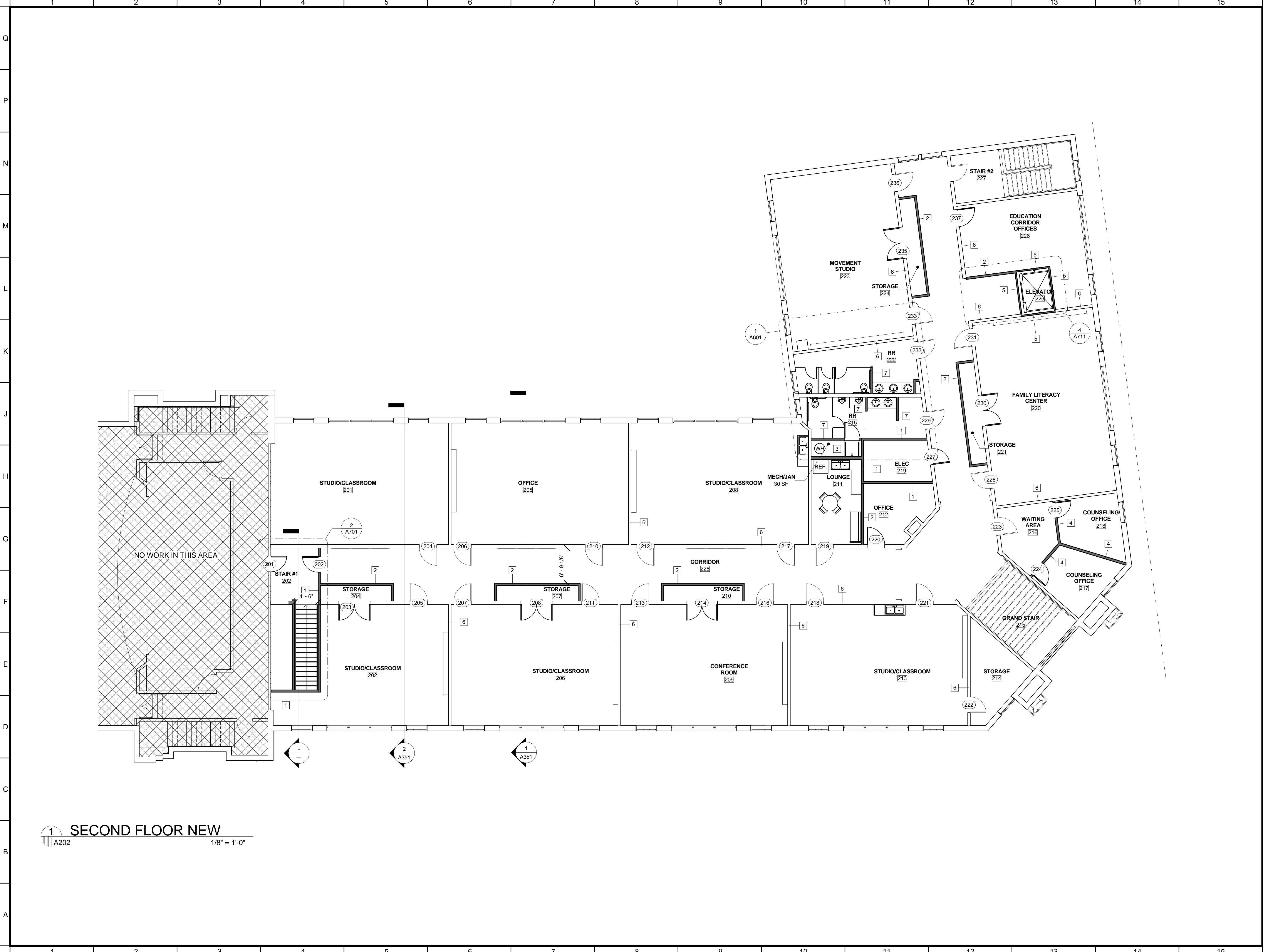
PARTIAL RENOVATION OF
THE SECOND FLOOR OF ST.
MATTHIAS SCHOOL FOR
THE BROADMOOR ARTS &
WELLNESS CENTER AT
BLESSED TRINITY ROMAN
CATHOLIC CHURCH

100% DESIGN DEVELOPMENT SET

| | | | |
|-------------|-----------------|------------|-------------|
| DESIGNED BY | LTL | CHECKED BY | PP |
| DRAWN BY | LTL | DATE | MAY 6, 2014 |
| SHEET TITLE | FIRST FLOOR NEW | | |
| PROJECT NO. | SHEET NO. | | |

10939

A201



1 SECOND FLOOR NEW
A202 1/8" = 1'-0"

MATERIALS KEYING/ GENERAL NOTES

| No. | Description | Date |
|-----|-------------|------|
| | | |
| | | |
| | | |
| | | |

KEY PLAN

Mathes Brierre
ARCHITECTS

201 St. Charles Avenue, Forty First Floor
New Orleans, Louisiana 70170-4100
Voice. 504. 586. 9303. Fax. 504. 582. 1305

PROJECT TITLE

PARTIAL RENOVATION OF
THE SECOND FLOOR OF ST.
MATTHIAS SCHOOL FOR
THE BROADMOOR ARTS &
WELLNESS CENTER AT
BLESSED TRINITY ROMAN
CATHOLIC CHURCH

100% DESIGN DEVELOPMENT SET

| | | | |
|-------------|-----|------------|-------------|
| DESIGNED BY | LTL | CHECKED BY | PP |
| DRAWN BY | LTL | DATE | MAY 6, 2014 |

| | |
|------------------|-----------|
| SHEET TITLE | |
| SECOND FLOOR NEW | |
| PROJECT NO. | SHEET NO. |
| 10939 | A202 |