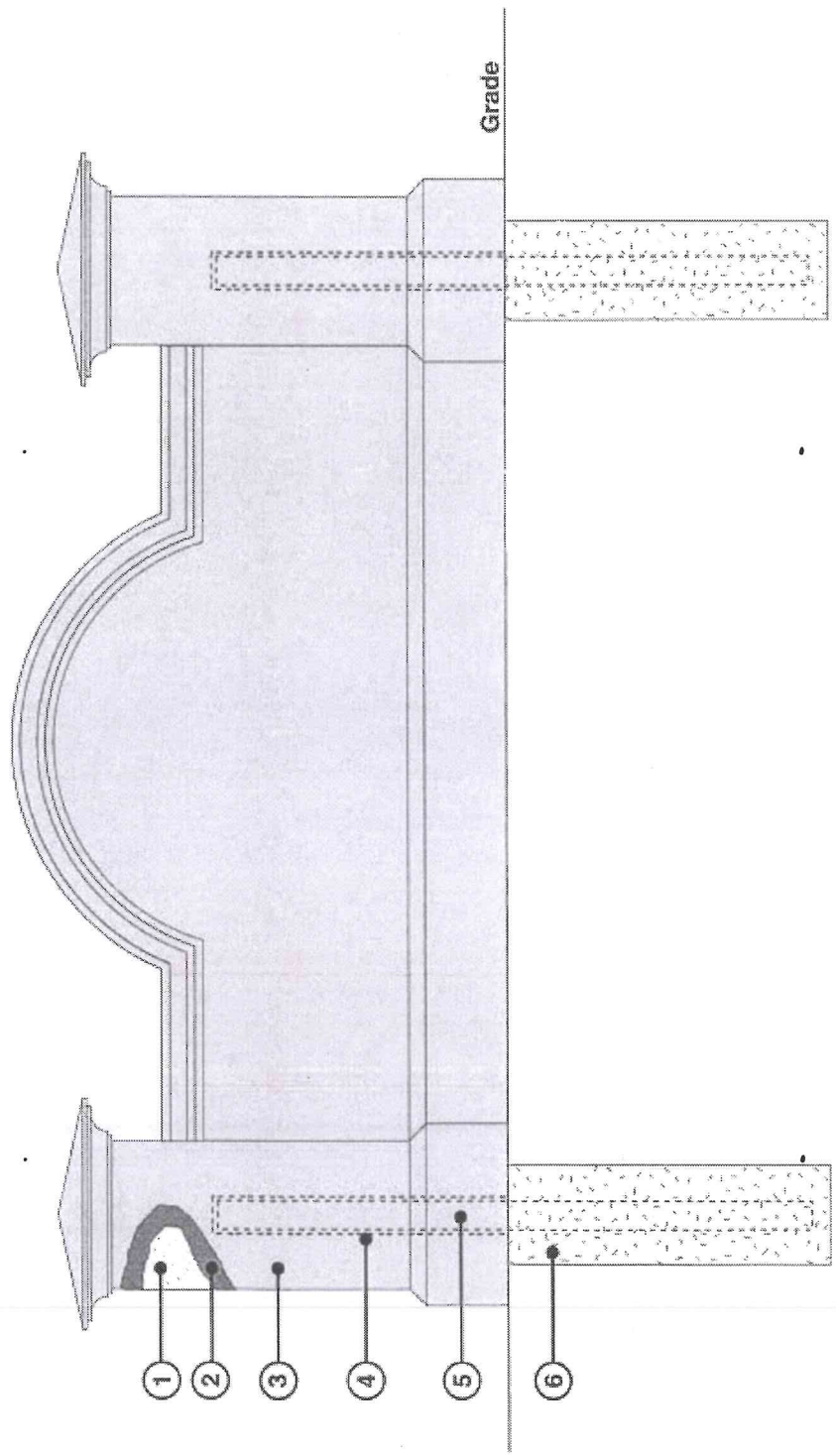




Synthetic Stucco Monument Signs with Faux Stone Finish - Columns & Base

Recessed & Painted Stucco Text/Graphics (@ 6'x10'x21")

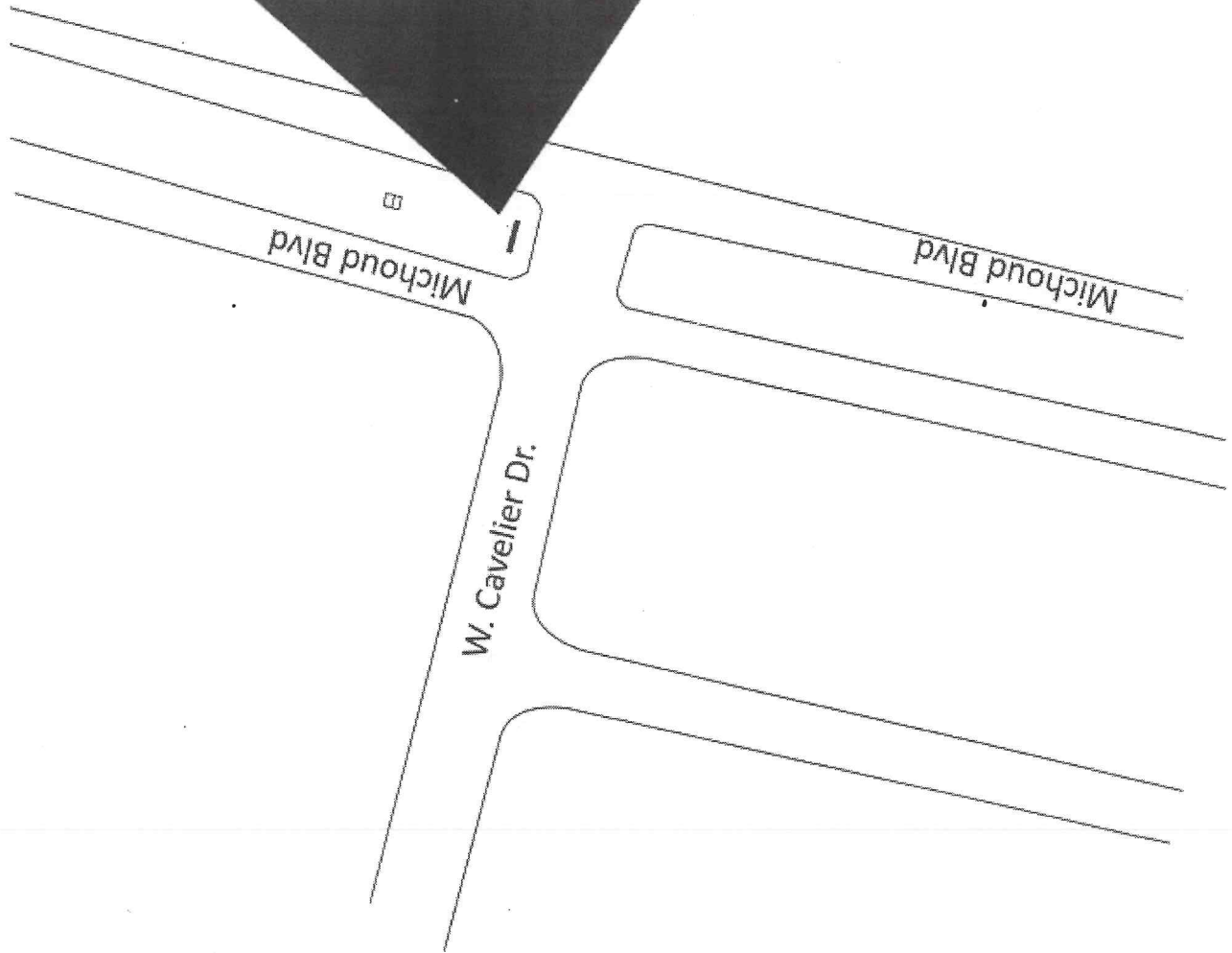
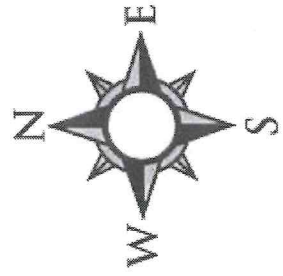
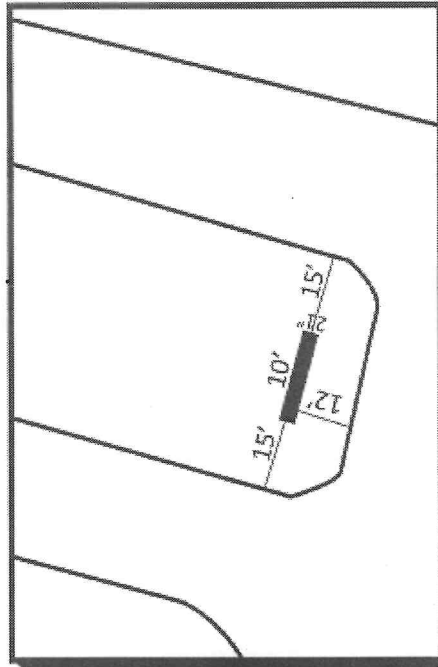
- ① Core of Structure is Molded Expanded Polystyrene. 1# C. F.
- ② Aromatic Fast Cure Urethane, Impact Resistant Hard Coat Finish.
- ③ Finished Surface is 100% Aggregated Acrylic.
- ④ 3" or 4" Schedule 40 PVC Pipe is Bonded Into Center of Structure.
- ⑤ Steel Pipe is Inserted Upon Installation of Structure on Site with Expanding Polymeric Resin Foam.
- ⑥ Concrete Footing as Required by Local Code. Post Must Typically Extend 2' to 4' Into Concrete.



| | | | |
|--|--|--|--|
| | <p><i>Notes:</i></p> <hr/> <hr/> <hr/> | <p><i>Typical Composite Detail Drawing</i></p> | |
|--|--|--|--|

7101 Michoud Blvd
New Orleans, LA 70129

Proposed Sign Placement #2



7101 Michoud Blvd
New Orleans, LA 70129

Proposed Sign Placement #2

