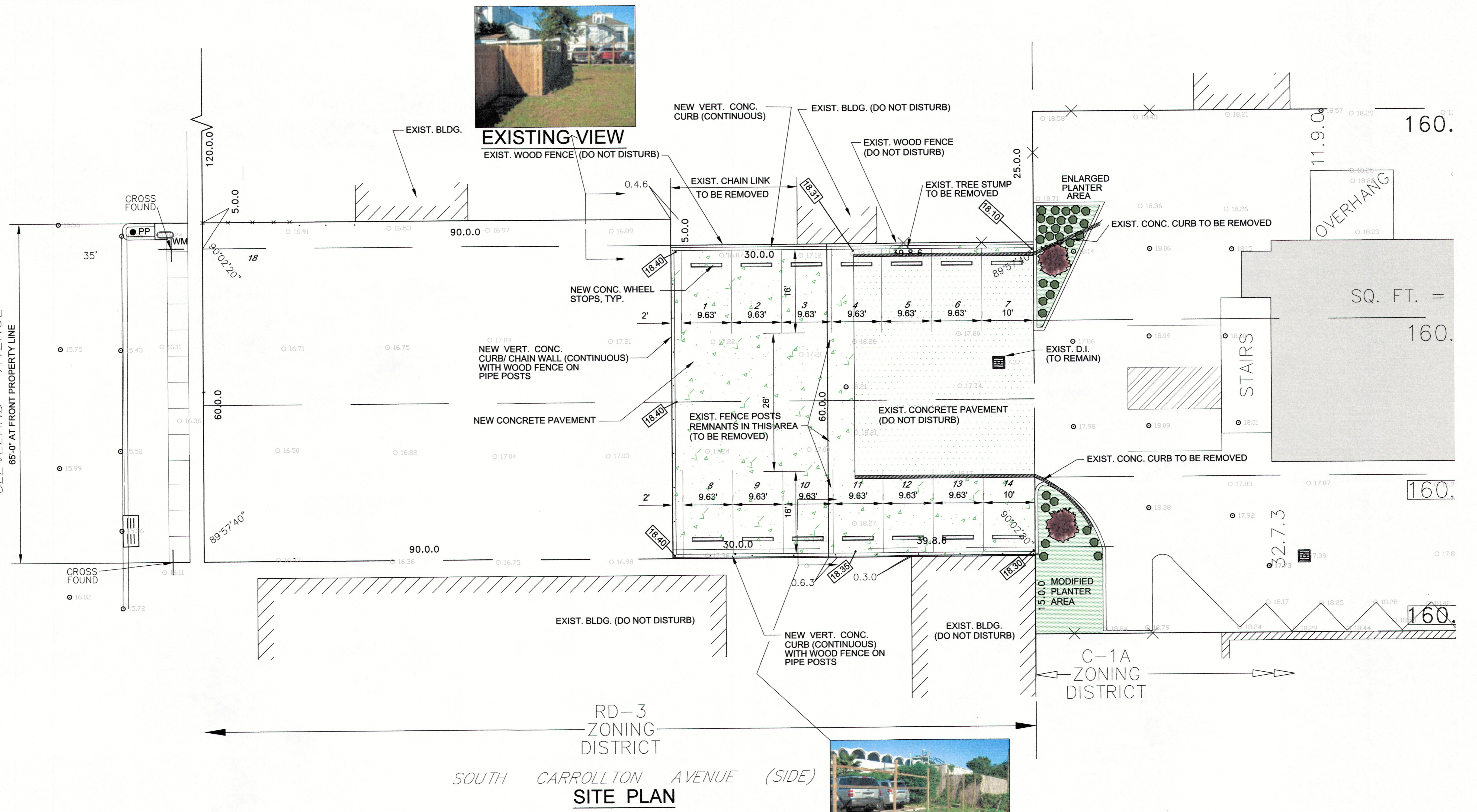
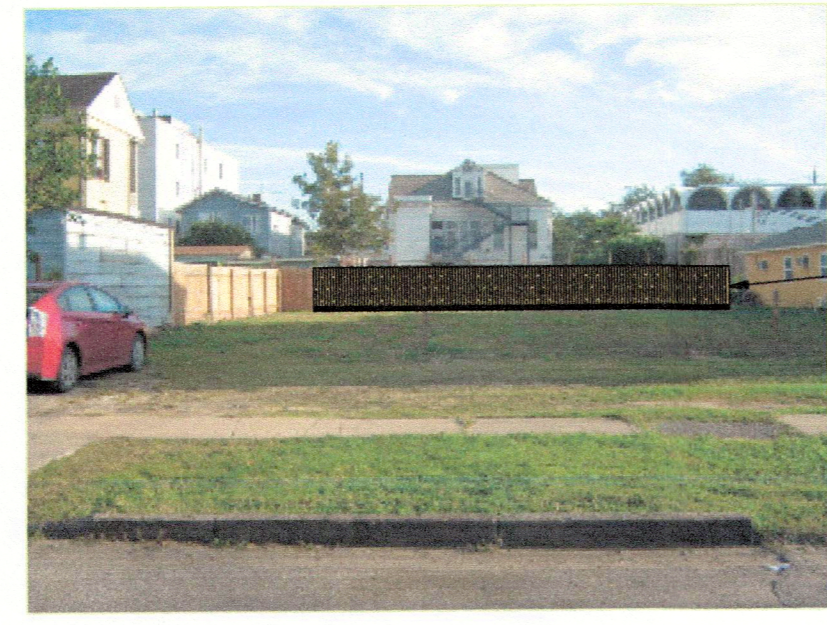


CLEVELAND AVENUE  
65'-0" AT FRONT PROPERTY LINE

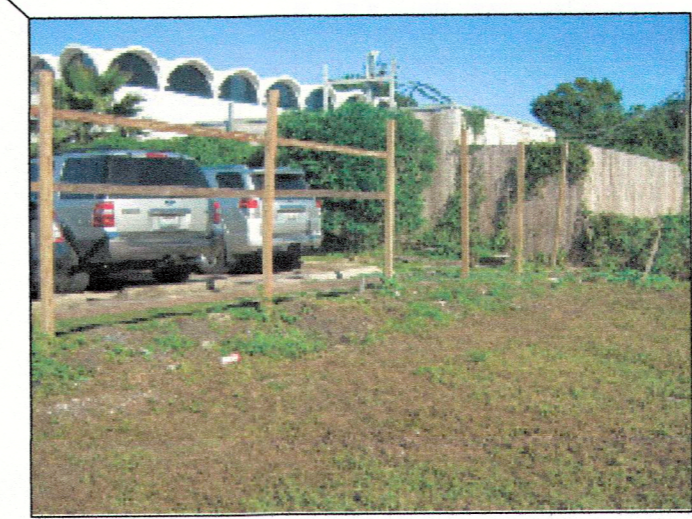


**EXISTING VIEW**  
(FROM CLEVELAND AVENUE)

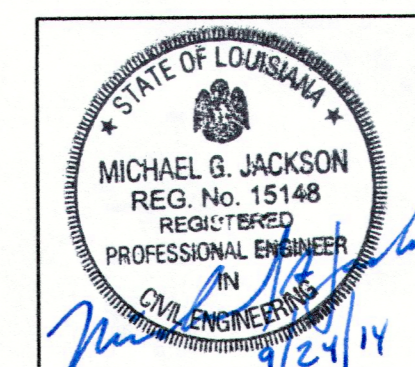


**PROPOSED VIEW**  
(FROM CLEVELAND AVENUE)

NEW VERT. CONC. CURB/ CHAIN WALL (CONTINUOUS) WITH WOOD FENCE ON PIPE POSTS



**EXISTING VIEW**



REV.	DATE	DESCRIPTION	BY
VOLUNTEERS OF AMERICA GREATER NEW ORLEANS 4152 CANAL ST.			
VOA PARKING LOT EXPANSION SITE PLAN			
BURK-KLEINPETER, INC. ENGINEERS, ARCHITECTS, PLANNERS, ENVIRONMENTAL SCIENTISTS 4176 CANAL STREET, NEW ORLEANS, LOUISIANA 70119-5994 (504) 486-5901 FAX (504) 488-1714			
VICE PRES.	JOB NO.	DESIGNED W.B.	SCALE NOTED
REVIEWER	NO.13.056	DATE	SEPT.2014
PLAN IN HAND	CHECKED M.K.R.	FILE NO.	1 OF 2