



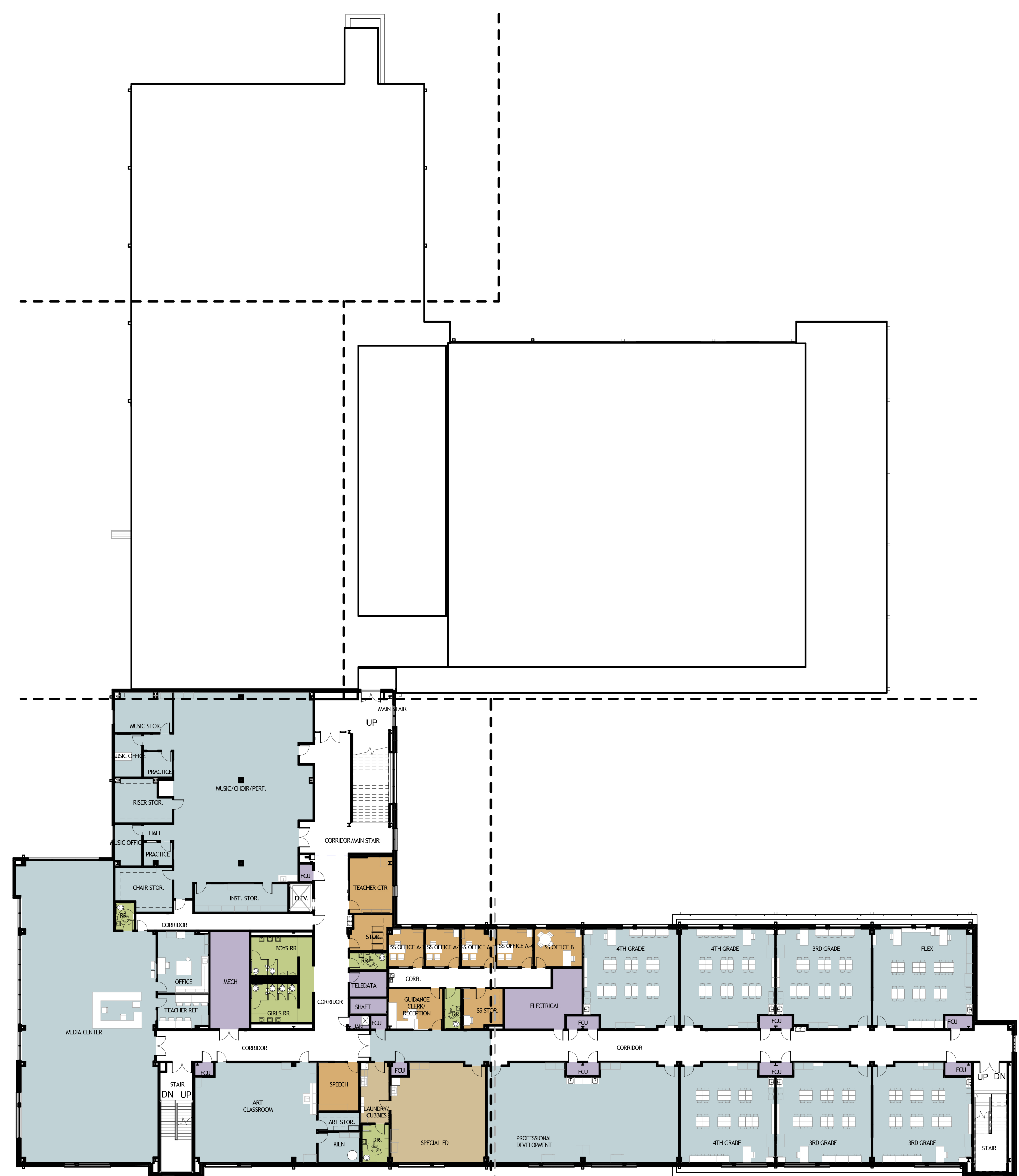
SEAL:

SEAL:

© THIS SET OF DOCUMENTS INCLUSIVE OF DRAWINGS, SPECIFICATIONS, AND ADDENDUMS MAY NOT BE COPIED, SCANNED, NOR ELECTRONICALLY DISTRIBUTED OR USED FOR CONSTRUCTION WITHOUT THE EXPRESSED WRITTEN CONSENT OF GraceHebert ARCHITECTS, APAC. NO PLAN ROOM, ELECTRONIC PLAN SERVICE (INTERNET PLAN SERVICE), NOR REPRODUCTION COMPANY SHALL BE PERMITTED TO POST THESE DOCUMENTS WITHOUT THE EXPRESSED WRITTEN CONSENT OF THE ARCHITECT, GraceHebert ARCHITECTS, APAC.

501 GOVERNMENT STREET ■ BATON ROUGE, LA 70802
P.225.338.5569 F.225.338.5570

**PAUL B. HABANS
ELEMENTARY SCHOOL**
Recovery School District
3501 SEINE STREET NEW ORLEANS,
NEW ORLEANS PARISH LOUISIANA 70114



NOTE:
ALL STRUCTURAL ELEMENTS TO BE STRUCTURAL STEEL.
COLUMNS TO BE CONCEALED BY STUDS, GYP BOARD AND FINISHES.

DATE: AUGUST 11, 2014
PHASE: DD
ISSUED FOR:
PROJECT NO: 341414

SECOND FLOOR PLAN

AP102

1 AP102 2ND FLOOR PLAN - OVERALL
1" = 20'-0"