

NOTES BY SYMBOL

- ① 6" PIPE BOLLARD - RE: 4/A10 AND EXTERIOR FINISH SCHEDULE.
- ② 4" PIPE BOLLARD - RE: 4/A10 AND EXTERIOR FINISH SCHEDULE.
- ③ FACE OF SOFFIT / VALANCE ABOVE - RE: WALL SECTIONS.
- ④ FACE OF CANOPY / AWNING / ROOF LINE ABOVE
- ⑤ CABINET BY MILLWORK SUPPLIER - RE: FIXTURE PLAN F1
- ⑥ COILING GRILLE
- ⑦ 6" THICK CONCRETE PAD FOR COMPACTOR AND LOADING AREA - RE: STRUCTURAL DRAWINGS.
- ⑧ COMPACTOR
- ⑨ COMPACTOR ENCLOSURE
- ⑩ COMPACTOR CHUTE
- ⑪ DOWNSPOUT LEADER - WITH DOWNSPOUT GUARD RE: 6/A10
- ⑫ PROVIDE LISTED AND LABELED DRY-CHEMICAL UL-RATED FIRE EXTINGUISHER, RE: SPECS
- ⑬ ELECTRICAL METER AND DISCONNECT BY UTILITY CO. RE: ELEC
- ⑭ GAS METER, RE: PLUMBING
- ⑮ FIRE RISER: COORDINATE BOLLARD LOCATION WITH FIRE RISER LOCATION
- ⑯ 4" PIPE BOLLARD, SURFACE MOUNTED RE: 10/A10
- ⑰ RAIN CANOPY RE: 19/A12
- ⑱ FLOOR CLEANOUT, RE: PLUMBING
- ⑲ CONC. CURB, RE: CIVIL
- ⑳ CONC. CURB, RE: A8
- ㉑ DOWNSPOUT LEADER AND GUARD

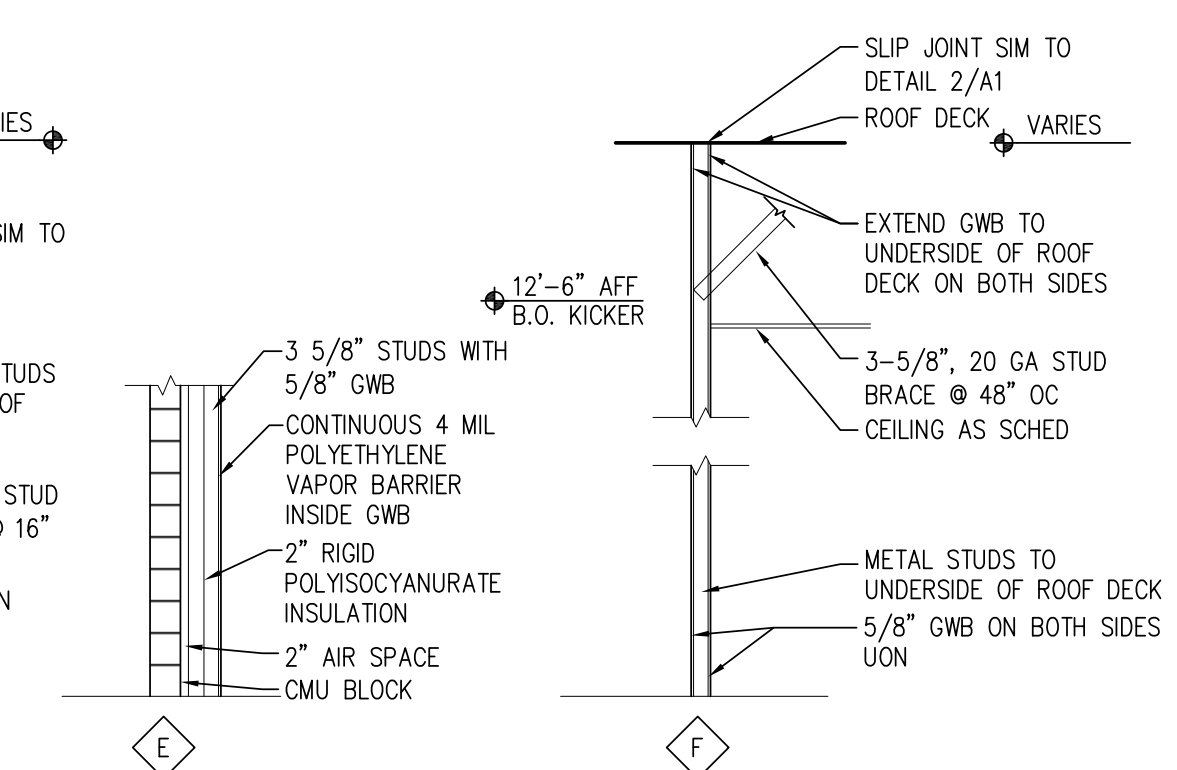
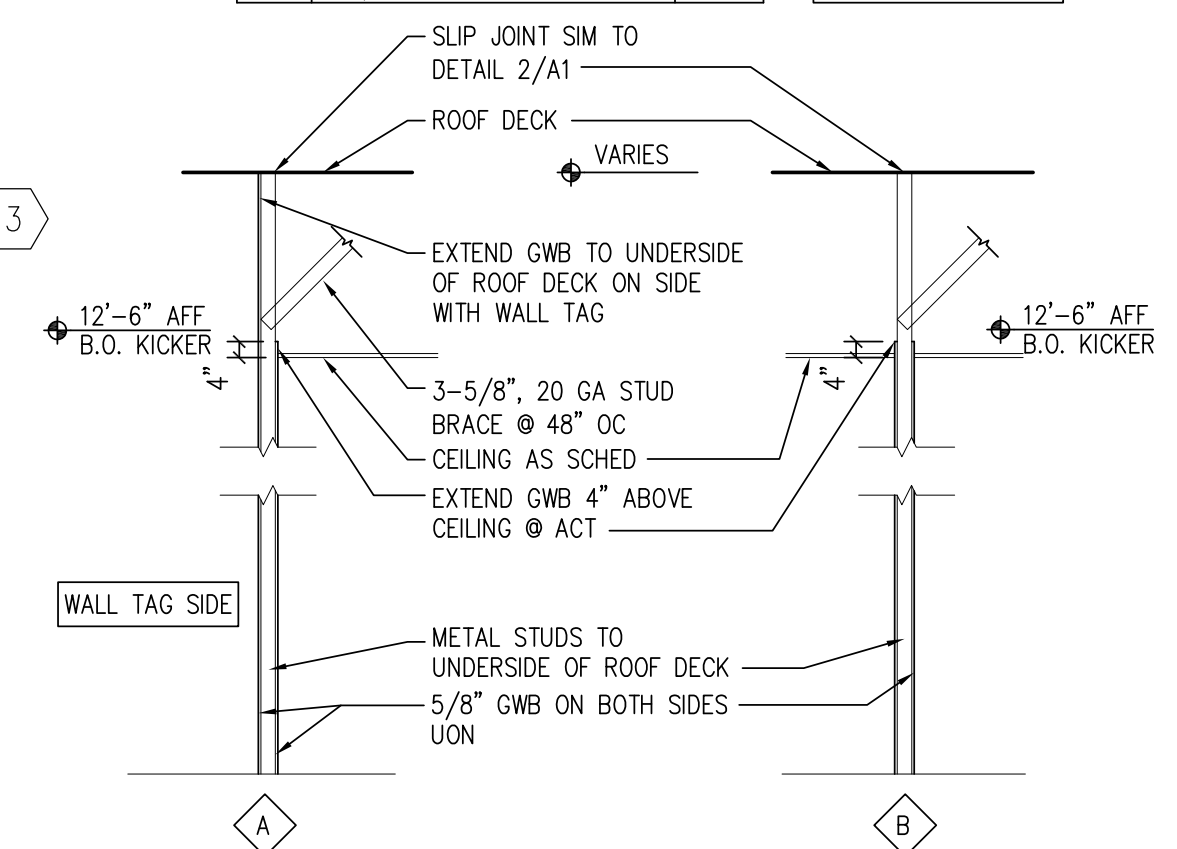
LEGEND

- X WINDOW DESIGNATION RE: SHT A13
- X INDICATES DOOR-RE: SHT A13 FOR DOOR SCHEDULE
- XX PARTITION TYPE - RE: THIS SHT
STUD DESIGNATION
WALL MATERIAL
- X FLOOR PLAN NOTES THIS SHT
- XXX FINISH DESIGNATION - RE: SHT A13

PARTITION TYPES

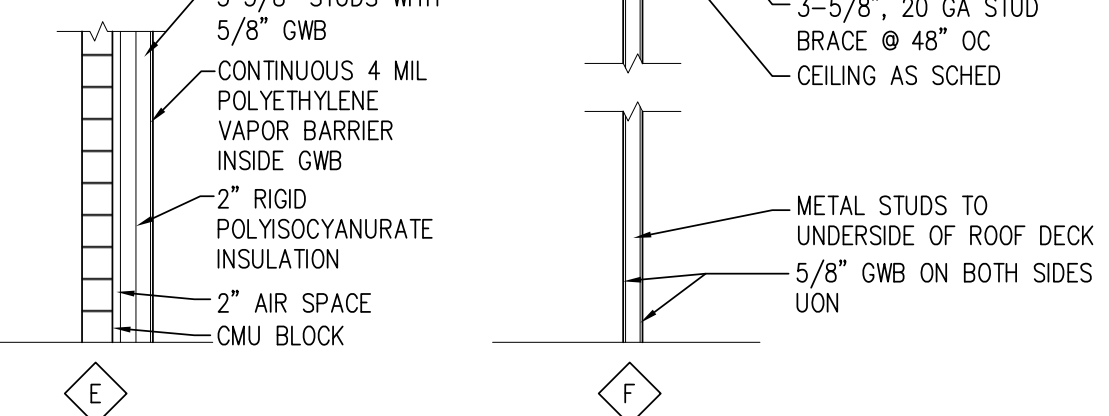
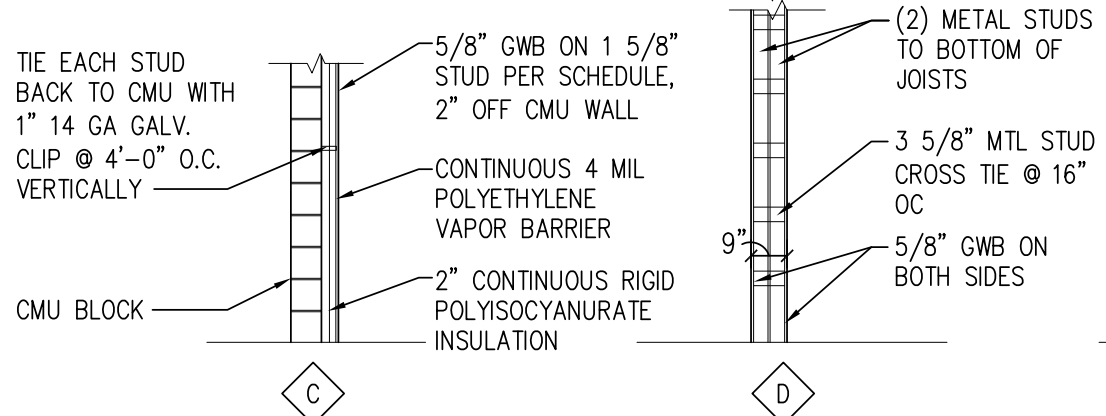
STUD	DESCRIPTION	GA
1	3 5/8" @ 24" OC	20
2	6" @ 24" OC	20
3	1-5/8" @ 24" O.C.	20
4	2 5/8" @ 24" OC	20
5	6" @ 16" OC	18
6	3 5/8" @ 16" OC	20

NOTE: PROVIDE MOISTURE RESISTANT GYP BD @ ALL WET AREAS
NOTE: REFER TO FLOOR PLANS FOR LOCATION OF PARTITION TYPES



1 FLOOR PLAN
A1 SCALE: 1/8"=1'-0"

2 SLIP JOINT
A1 SCALE: 1 1/2" = 1'-0"



TYPE B - STANDARD
13225-RIGHT
CHAMFER DRIVE-THRU
STORE NUMBER: 10538
SWC N. CLAIBORNE AVE. & FORSTALL ST.
NEW ORLEANS, LA
PROJECT TYPE: NEW STORE
DEAL TYPE: FFS
CS PROJECT NUMBER: 70660

ARCHITECT OF RECORD
GENESIS DESIGN GROUP, APAC
421 W HARWOOD ROAD
SUITE 100
HURST, TEXAS 76054
TEL (817) 285-7444
FAX (817) 285-7318

STRUCTURAL ENGINEER:
STEPHEN A. DIAL, P.E.
CONSULTING ENGINEER
1825 MARKET CENTER BLVD, STE 620
DALLAS, TEXAS 75207
TEL (214) 760-7000
FAX (214) 760-7050

MECHANICAL ENGINEER:
DON PENN
635 WESTPORT PARKWAY, STE 300
GRAPEVINE, TX. 76051
TEL (817) 410-2858
FAX (817) 251-8411

DEVELOPER:
FIRST HARTFORD
REALTY CORPORATION
149 COLONIAL ROAD,
PO BOX 1270
MANCHESTER, CT 06040
TEL (860) 646-6555
FAX (860) 646-8572

SEAL:

REVISIONS:

DRAWING BY: DW
DATE: 22 OCTOBER 2014
JOB NUMBER: 14-086
TITLE:

FLOOR PLAN & DETAILS
SHEET NUMBER: A1
COMMENTS: ISSUE FOR BID/PERMIT