



L. DOW OLIVER & ASSOCIATES
ARCHITECTS

07-23-2014
1417
1-10-03-2014

WINDOW PROTECTION

DESIGN CRITERIA

LESS THAN 30' TALL, RISK CATEGORY II
WIND SPEED 130 MPH, BC02D, ASCE 7-10

PROTECTION

WINDOWS WILL BE PROTECTED WITH 7/16" THICK
WOOD PANELS. PANELS TO BE ATTACHED WITH 1/4" X 3 1/2"
BOLTS @ 18" O.C. TOP AND BOTTOM.

GENERAL NOTES

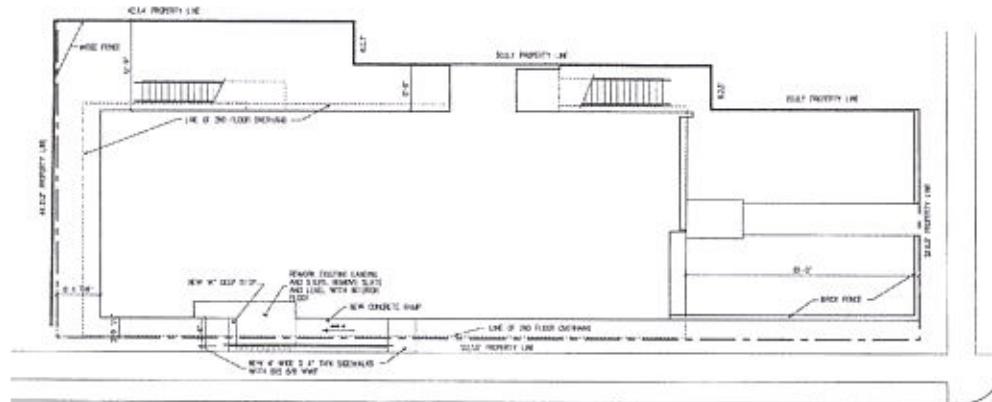
SPRINKLER: ENTIRE BUILDING IS CURRENTLY SPRINKLED, RELOCATE HEADS AS NECESSARY FOR PROPER
COVERAGE OF REVISED AREAS.
WORK TO BE PERFORMED BY A LICENSED SPRINKLER CONTRACTOR AND BRING SYSTEM UP TO
CURRENT STANDARDS.

FIRE ALARM: REPAIR AND REPLACE EXISTING SYSTEM AS NECESSARY TO MEET CODE
REROOFING: A CONTRACT TO REROOF THE BUILDING HAS BEEN AWARDED. THIS CONTRACTOR IS TO
COORDINATE HIS WORK WITH THAT OF THE ROOFING CONTRACTOR.

CEILING GRID: REMOVAL OF THE LAY IN ACOUSTICAL TILE WAS PREVIOUSLY BEEN PERFORMED, DAMAGE
HAS OCCURED TO THE GRID IN MANY PLACES, THIS CONTRACTOR SHALL INCLUDE IN HIS
BID THE REPLACEMENT OF 40% OF THE CEILING GRID TO MATCH EXISTING.

ST CHARLES AVE (SIDE)

GEN TAYLOR AVE (SIDE)



PENISTON STREET

PITT STREET

SITE PLAN

LOT A, SQUARE 382
ST JOSEPH
SIXTH DISTRICT

OCCUPANCY: RESIDENTIAL BOARD AND CARE LARGE FACILITY (SLEEPING FOR MORE THAN 16 PEOPLE)
TYPE OF CONSTRUCTION: TYPE II (000)

RENOVATIONS TO VOA BUILDING - 3801 PITT STREET

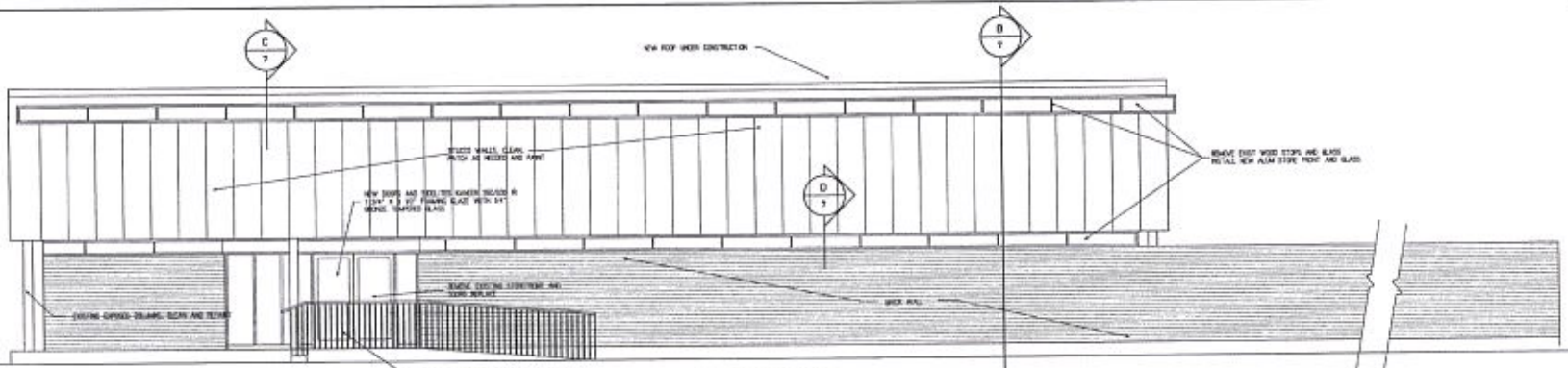
SITE PLAN



L. DOW OLIVER & ASSOCIATES, INC.
 ARCHITECTS
 1000 W. 10th St., Suite 100
 Oklahoma City, Oklahoma 73101
 Tel: 405.233.1111
 Fax: 405.233.1112
 www.ldoa.com

L. DOW OLIVER & ASSOCIATES
 ARCHITECTS

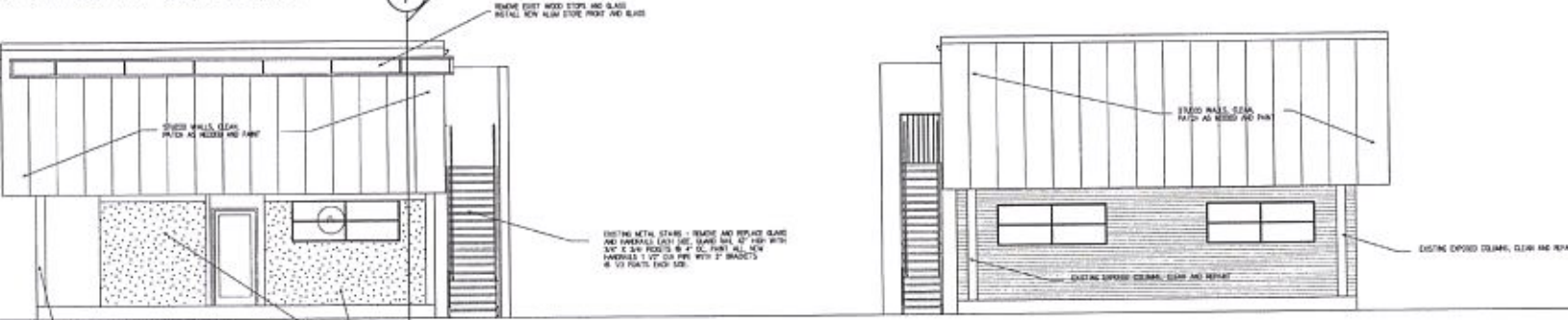
07-23-2014
 1417
 10-04-2014



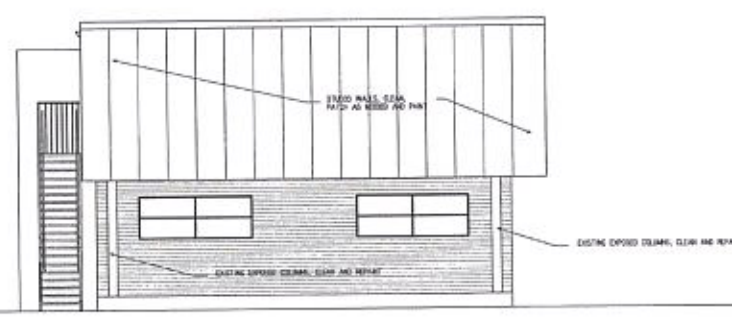
PITT STREET ELEVATION



ST CHARLES AVE (SIDE) ELEVATION



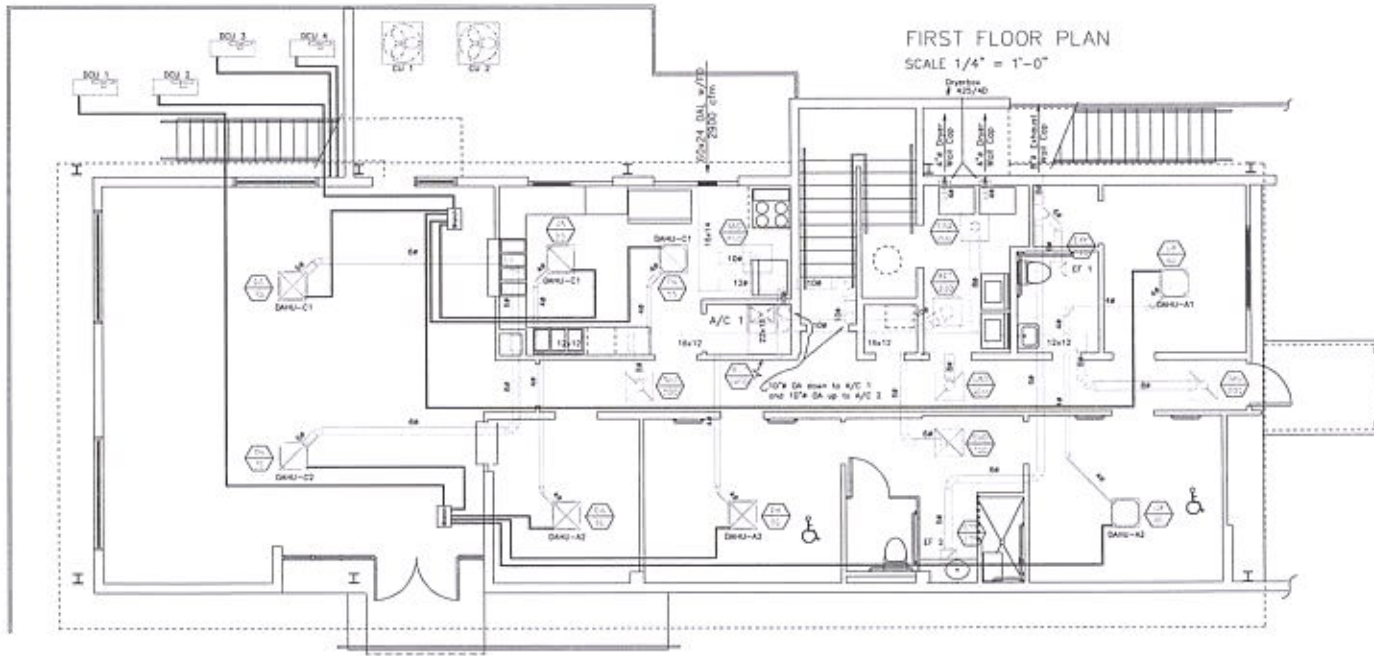
PENISTON STREET ELEVATION



GEN TAYLOR STREET (SIDE) ELEVATION

SCALE 1/4" = 1'-0"

RENOVATIONS TO VOA BUILDING - 3801 PITT STREET ELEVATIONS



AIR BALANCE SCHEDULE

ITEM	SUPPLY	RETURN	D.A.	MEAN INTAKE	EXHAUST	PRESSURE
A/C 1	1,400	800	500	-0-	-0-	-0-
A/C 2	1,400	950	450	-0-	-0-	-0-
DAHU 1st	2,800	2,800	-0-	300	300	-300
DAHU 2nd	2,400	2,400	-0-	450	450	-450
Meat Exhaust			450	800	800	-800
Restroom Ex.			300	300	300	-300
Open Exhaust			800	800	800	-800
OA Intake				2,800	2,800	+2,800
TOTALS	8,000	7,100	1,400	2,800	2,800	+ 10

AIR HANDLING UNIT SCHEDULE

Mark	CFM	D.A.	ESP	Sec. Cap.	Tot. Cap.	ESR/VRB	LSR/VRB
A/C 1	1400	500	0.57	36.1 MWH	50.5 MWH	80.7/168.8	51.2/56.1
A/C 2	1400	450	0.57	36.1 MWH	50.5 MWH	80.7/168.8	51.2/56.1

AIR COOLED CONDENSING UNIT SCHEDULE

Mark	Capacity	Stages	Voltage	MCA	Ph. Fuse	Model	Notes
A/C 1	10.0 KW	1	230-1F	51.5	63	1AMBCC08V	1,2,3,4
A/C 2	10.0 KW	1	230-1F	51.5	63	1AMBCC08V	1,2,3,4

Notes: 1) American Standard model numbers used to establish a standard.
 2) Provide units with vibration isolators.
 3) Provide units with filter racks.
 4) Provide units with wall mounted air-pressure communicating filters.

DUCTLESS AIR HANDLING UNIT SCHEDULE

Mark	CFM	D.A.	ESP	Cooling	Heating	ESR/VRB	LSR/VRB
DAHU 0a	350	60	NA	8.6 MWH	13.8 MWH	80/57	70/50
DAHU 0b	350	75	NA	11.1 MWH	13.8 MWH	80/57	70/50
DAHU 0c	350	55/75	NA	15.0 MWH	18.0 MWH	80/57	70/50

Notes: 1) Mitsubishi model numbers used to establish a standard.
 2) Provide units with Tri-Filter hanging kits.
 3) Provide units with adjustable diffuser + filter racks.
 4) Provide units with outside air connection.
 5) Provide units with condenser pumps.
 6) Provide units with remote controller. Controls with wall heater.
 7) Provide units with 3/8" reg + Grl. connection to companion outdoor unit.

DUCTLESS CONDENSING UNIT SCHEDULE

Mark	Capacity	Ambient	Voltage	MCA	Ph. Fuse	Model	Notes
DCU 1	48 MWH	95	230-1F	32.0	50	MK2-8848NA	1,2
DCU 2	48 MWH	95	230-1F	32.0	50	MK2-8848NA	1,2
DCU 3	48 MWH	95	230-1F	32.0	50	MK2-8848NA	1,2
DCU 4	48 MWH	95	230-1F	32.0	50	MK2-8848NA	1,2

Notes: 1) Mitsubishi model numbers used to establish a standard.
 2) Mount condenser heat pump units to be installed in accordance with manufacturer's installation instructions.

AIR DEVICE SCHEDULE

Mark	Size	CFM	WFS	WBSL	WBSM	Notes
EF 1	24 x 24	WSPS	WFS	WBSL	WBSM	1-1/2" Round
EF 2	24 x 24	WSPS	WFS	WBSL	WBSM	1-1/2" Round
EF 3	24 x 24	WSPS	WFS	WBSL	WBSM	1-1/2" Round

FAN SCHEDULE

Mark	CFM	ESP	Electro	Series	Type	Model	Notes
EF 1	75	3/8"	115/1,60-1126	Resistor	Ceiling	SP-4190	1,2,3,4
EF 2	125	3/8"	115/1,60-1126	Resistor	Ceiling	SP-4200	1,2,3,4
EF 3	300	3/8"	115/1,60-1126	Resistor	Ceiling	SP-4410	1,2,3,4

Notes: 1) Fans to be UL approved. Greenheck model numbers used to establish a standard.
 2) Fans to have moisture vibration isolators.
 3) Fans to have backdraft dampers.
 4) Fans to have fan mounted speed control wired to light switches by Dr 16.



Powell, Roy R. Engineering
 Mechanical & Control Systems Engineering
 422 Tully Park, Metairie, LA 70002
 (504) 885-3636, powell@rcr.com

REVISIONS: 1) 11/25/14 - 11/25/14

11/25/14