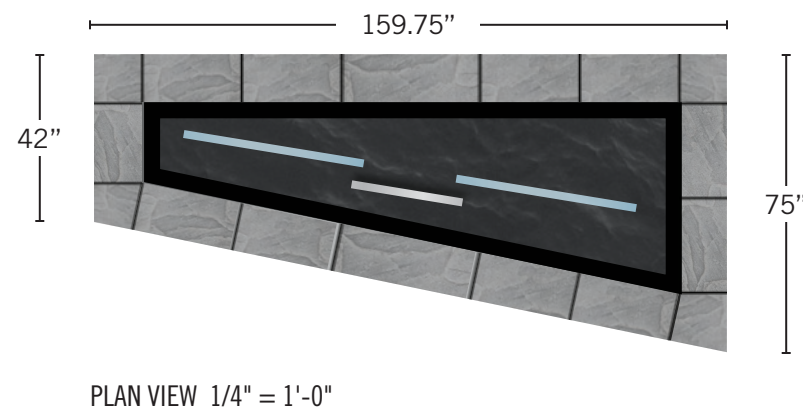
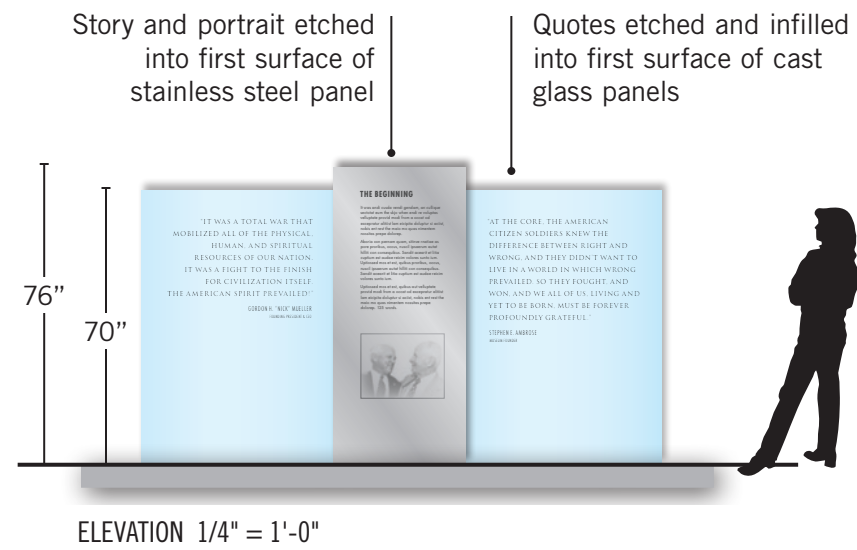


FOUNDERS WALL

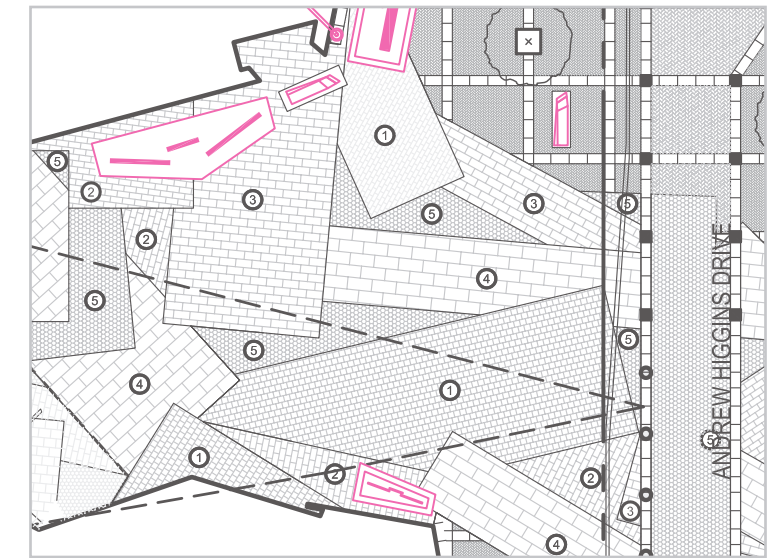
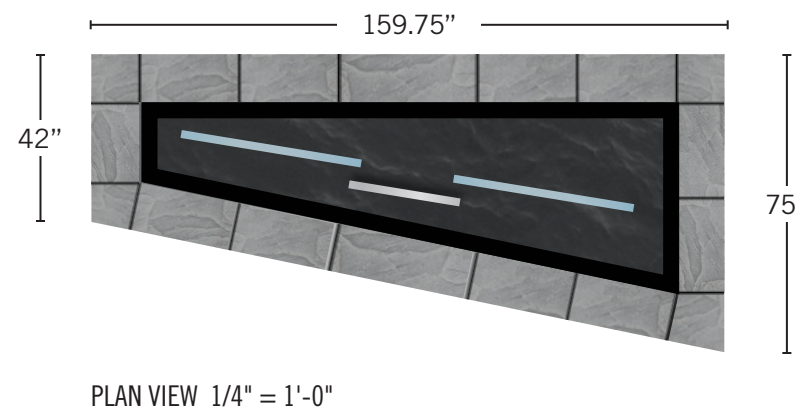
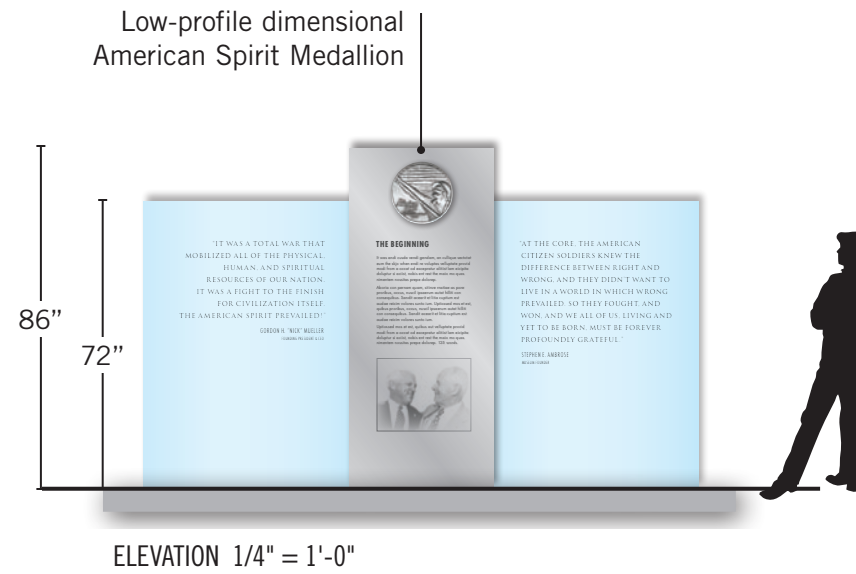
The Founders Wall is placed on the west side of the Solomon Victory Theater. All three walls are set into a water-feature base within a stone frame that surface sits flush with the Parade Ground. "The Beginning" story is set at 0.675" cap height and 125 words. Both quotes are set at 1.25" cap height.

Note: Final engineering and local ADA code compliance TBD.

OPTION 1



OPTION 2

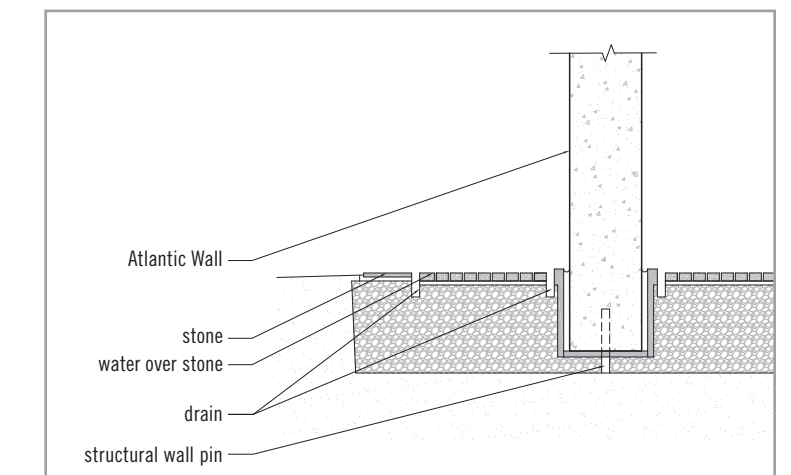
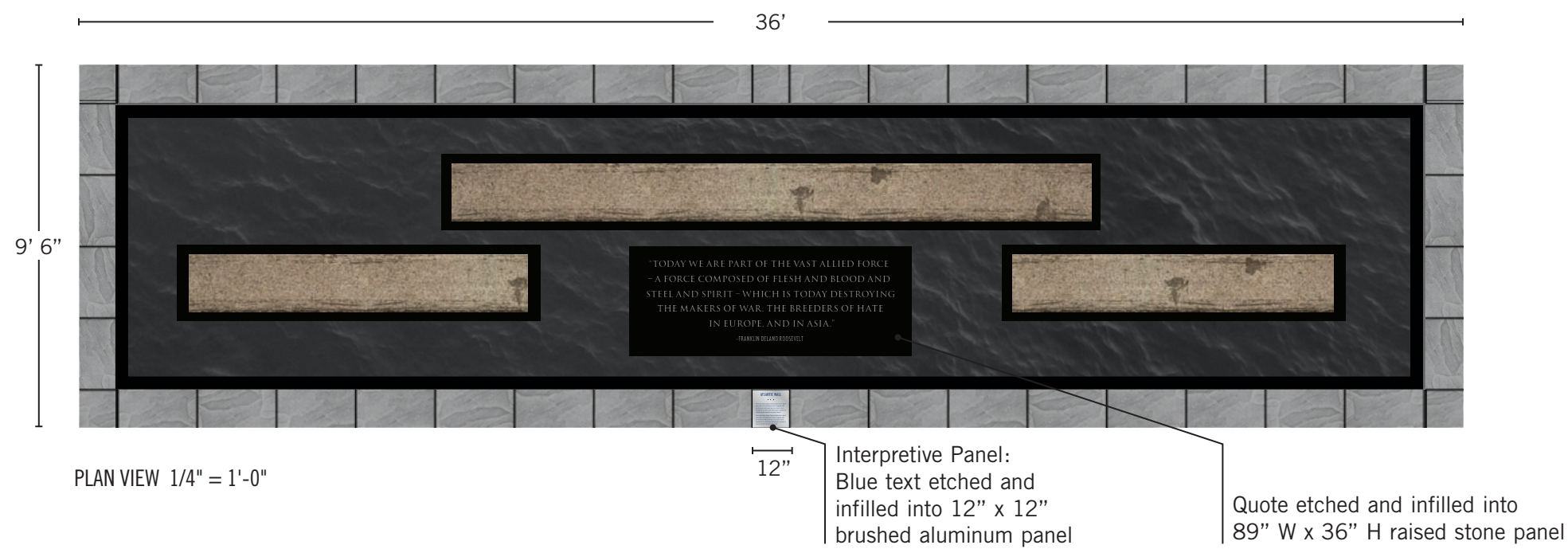
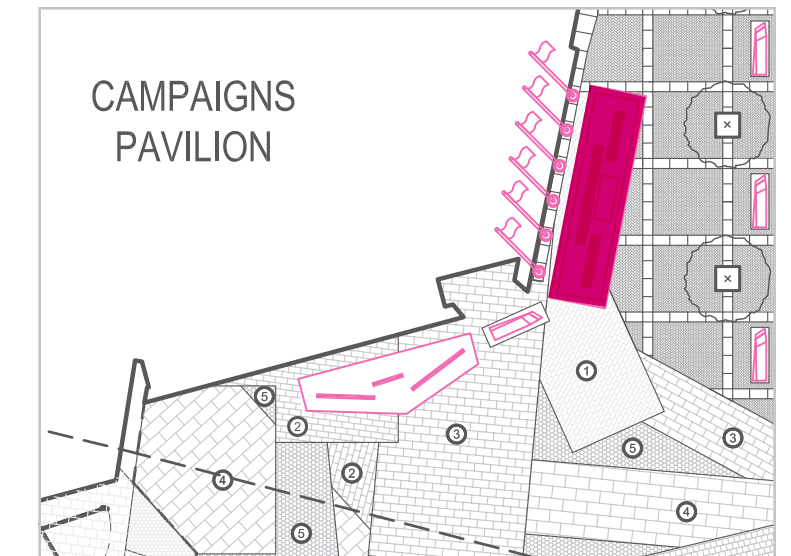
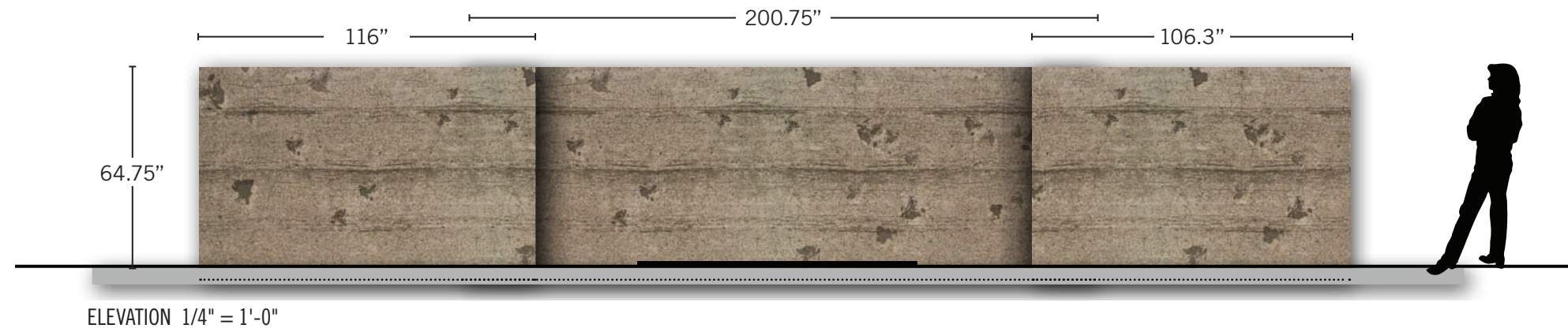


LOCATION PLAN 1/32" = 1'-0"

ATLANTIC WALL

The Atlantic Walls are placed on the north side of the Campaigns of Courage Pavilion. Wall elements are set into base within a stone frame that surface sits flush with the Parade Ground. The quote is on a raised panel above the water feature. The interpretive panel for the Atlantic Walls is set into stone frame. Six American flags are placed behind the Atlantic Wall as a backdrop.

Note: Final engineering and local ADA code compliance TBD.



PLAQUES 1" = 1'-0"

NAME & NAME GOES HERE

Victory (\$10M +): Brushed Aluminum
36" w x 5.25" H - 2.5" C.H. (qty. 7)

NAME & NAME GOES HERE

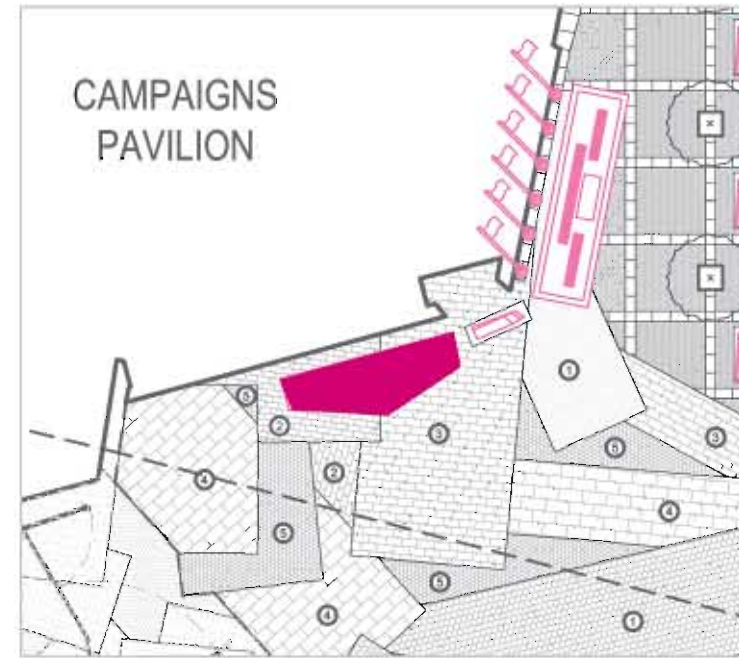
Honor (\$5M-9.99M): Brushed Aluminum
21" w x 5.25" H - 1.675" C.H. (qty. 15)

NAME & NAME GOES HERE

Freedom (\$2M-4.99M): Brushed Aluminum
15" w x 5.25" H - 1.125" C.H. (qty. 15)

NAME & NAME GOES HERE

Liberty (\$1M-1.99M): Brushed Aluminum
13" w x 5.25" H - 1" C.H. (qty. 58)



LOCATION PLAN 1/32" = 1'-0"

MAJOR DONOR WALL

The Major Donor Wall is placed at the north-east corner of the Campaigns of Courage Pavilion. Brushed aluminum plaques are etched and infilled with donor names, then pin mounted at varying depths to flame finished stone walls. Four levels of donations are represented with corresponding sized plaques. Behind the plaques, the walls have water running down their front face straight into a granite pool within a concrete base. The 3" cap height dimensional letter quote is brushed aluminum and pin-mounted with the water feature running behind.

Note: Final engineering and local ADA code compliance TBD.

33' 7/12"

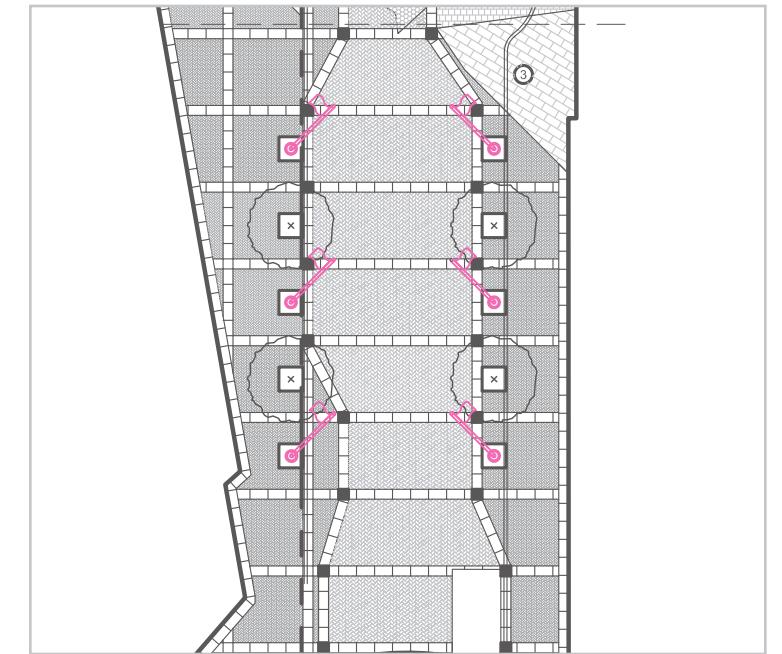
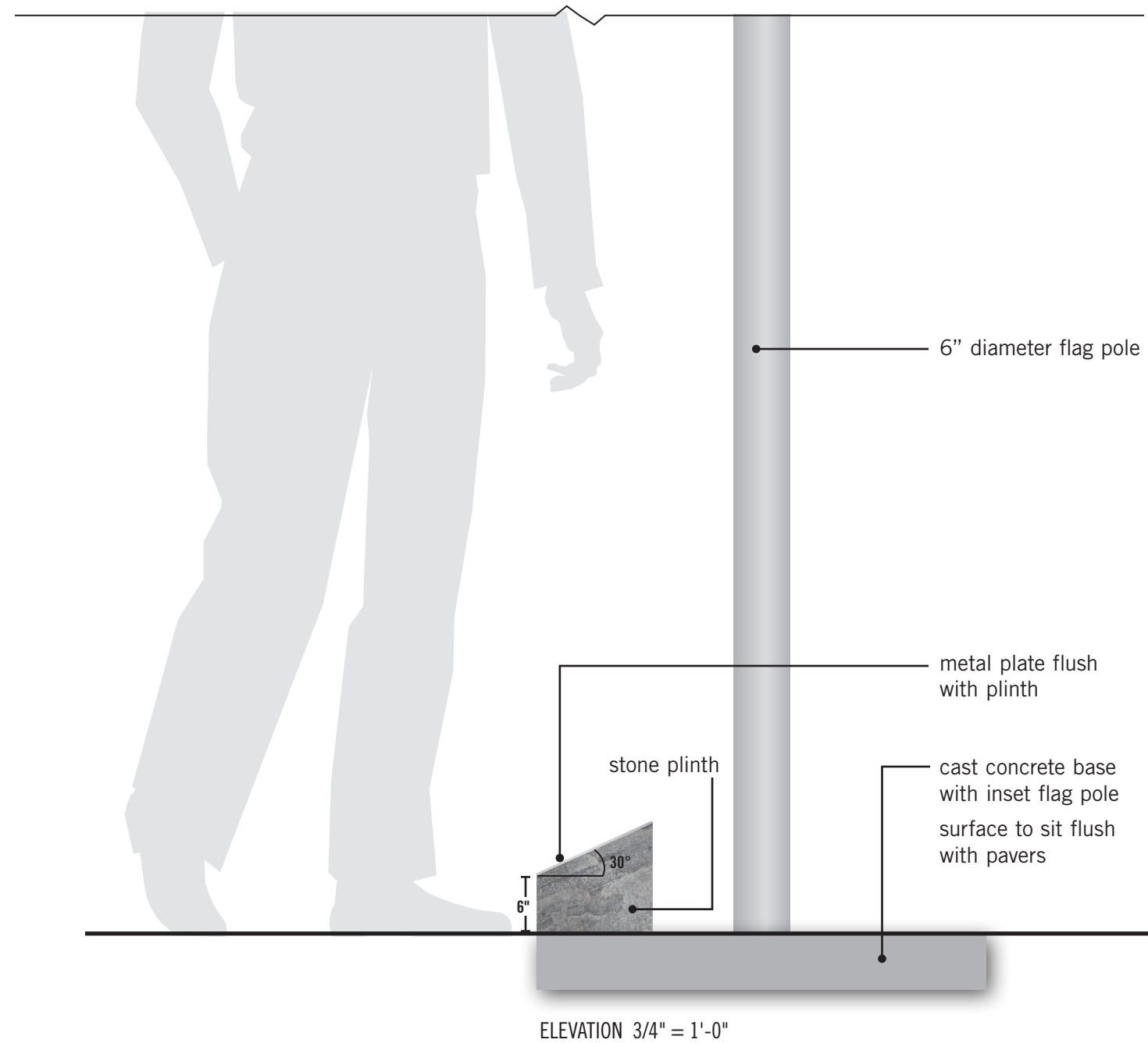


ELEVATION 1/2" = 1'-0"

SERVICE FLAGS

The six service branch flags are hung from 30' tall - 6" diameter flag poles along Higgins. Flag poles are set into a concrete base with a donor/interpretive panel.

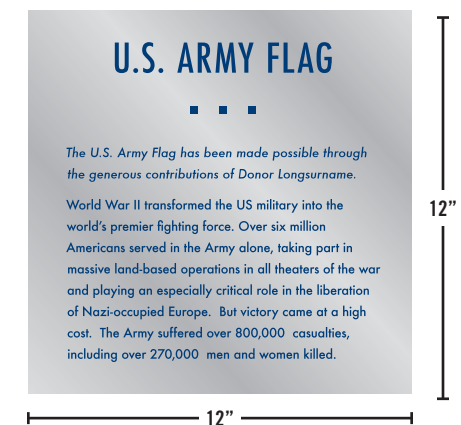
Note: Final height and installation TBD based on engineering.



LOCATION PLAN 1/32" = 1'-0"



ELEVATION 3/4" = 1'-0"



TOP PLAN 2" = 1'-0"

TRIBUTE BENCH



RENDERING VIEW (NTS)

TRIBUTE BENCHES

Seven tribute benches will be placed throughout the Parade Ground. Each bench will feature a unique character: Dwight Eisenhower, Chester Nimitz, Harry S. Truman, Franklin Delano Roosevelt, George Marshall, Douglas MacArthur, a war orphan (perhaps reading a telegram), a holocaust survivor and a Rosie the riveter.

The benches are comprised of a cut stone slab with a polished seat and back (or backless) and a bronze statue (seated or standing; attached to bench or pavers as applicable). A quote will be deep etched into the front face of the slab.

When a donor is named, it will be placed on the angled edge of the bench, inlaid into the ground. The plaque will be cut stone slab or bronze, with etched and infilled letters.



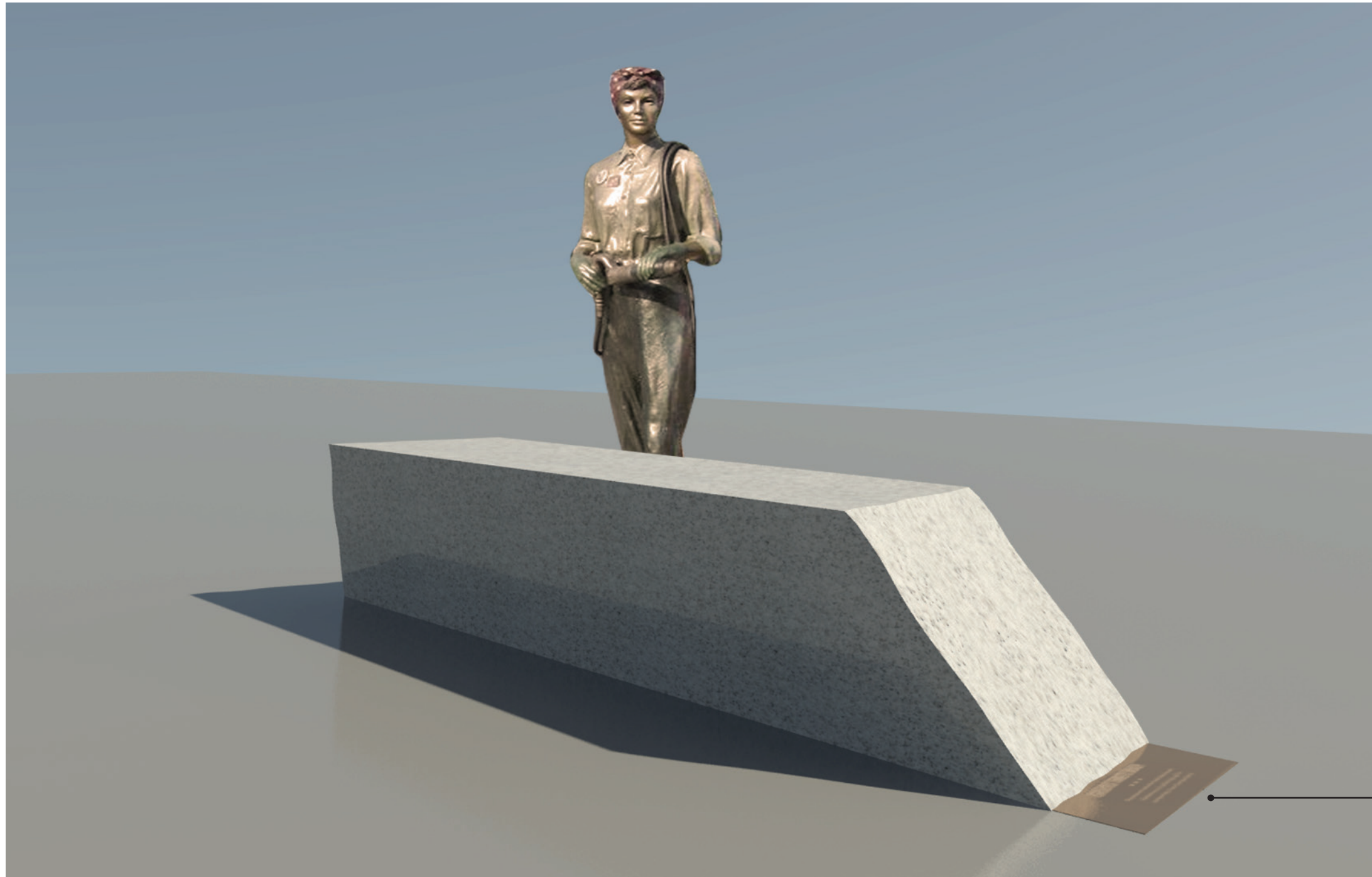
PLAN VIEW: DONOR PLAQUE
SCALE: 1 1/2" = 1' 0"

BACKLESS TRIBUTE BENCHES

Three backless tribute benches will be placed outside of the Parade Ground near the Atlantic Wall. Each bench will feature a unique character: a war orphan (perhaps reading a telegram), a holocaust survivor and a Rosie the riveter.

The benches are comprised of a cut stone slab with a polished seat and a bronze statue (standing; attached to bench or pavers as applicable). A quote will be deep etched into the front face of the slab.

When a donor is named, it will be placed on the angled edge of the bench, inlaid into the ground. The plaque will be cut stone slab or bronze, with etched and infilled letters.



RENDERING VIEW (NTS)

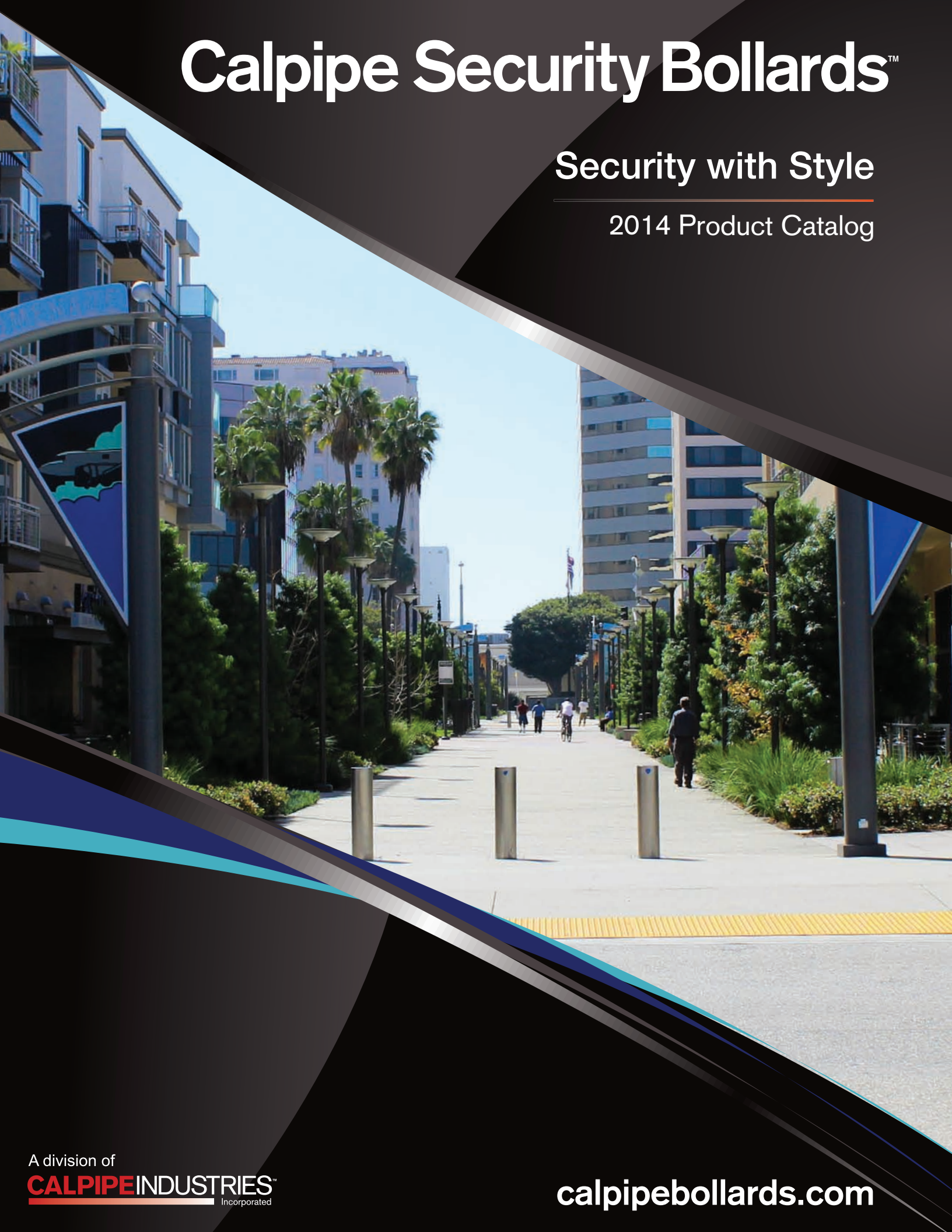


PLAN VIEW: DONOR PLAQUE
SCALE: 1 1/2" = 1' 0"

Calpipe Security Bollards™

Security with Style

2014 Product Catalog



BOLLARD STYLES

<p>FIXED BOLLARD</p>  <p>Fixed post bollards are the most commonly used. By creating a physical barrier, they protect pedestrians and buildings from oncoming vehicles, while allowing free movement in between the bollards.</p>	<p>FIXED BASE PLATE BOLLARD</p>  <p>Fixed base plate bollards are primarily used in multi-level parking structures, warehouses or distribution centers to protect structures and equipment from fork lifts and pallet jacks. FIXED BASE PLATE BOLLARDS ARE VISUAL DETERRANTS ONLY.</p>	<p>INTERNAL LOCKING REMOVABLE BOLLARD</p>  <p>Internal locking removable bollards are the most versatile bollard. Incorporating a tamper-resistant lock, the internal locking bollard delivers unmatched security with the flexibility of a removable bollard. Each bollard comes with an embedment sleeve for easy installation.</p>
<p>EXTERNAL PADLOCKING REMOVABLE BOLLARD</p>  <p>Removable bollards with external padlocks are ideal for restricting access to alleyways, bike trails and parking lots, as well as protecting property and people from oncoming traffic. Each bollard comes with an embedment sleeve for easy installation.</p>	<p>MANUALLY OPERATED RETRACTABLE BOLLARD</p>  <p>Manually operated bollards are used for a wide range of applications, from parking and traffic control to protecting walkways. The bollard lifts easily and locks into place. It retracts with a turn of the lock. The locking stainless steel lid provides extra security and covers the bollard to prevent pedestrian injuries.</p>	<p>ASSISTED LIFT RETRACTABLE BOLLARD</p>  <p>Assisted lift bollards incorporate an industrial grade gas strut that raises and lowers the bollard into place with the turn of a key. The assisted lift mechanism allows for a heavier bollard, with easier lift and higher security.</p>
<p>AUTO PNEUMATIC RETRACTABLE BOLLARD</p>  <p>Designed for repetitive cycles, the auto pneumatic retractable bollard system is ideal for restricted parking lots, access control gates, commercial building entrances, or military bases. Operation of these bollards can be integrated with most existing access control systems.</p>	<p>LIGHTED BOLLARD</p>  <p>Lighted bollards are built to withstand vehicle impacts, and are available in K-rated versions. Manufactured from type 304 stainless steel, the lighted bollards are not only strong, they look great while illuminating pathways and sidewalks.</p>	<p>HIGH SECURITY BOLLARD</p>  <p>Calpipe Security Bollard's K4/M30 and K12/M50 bollards meet specific safety and security requirements, and provide the flexibility and versatility for any structural and environmental need. The K4-Engineered and K12-Rated products are available in a variety of types, sizes and styles, including retractable removable and fixed versions.</p>
<p>SHALLOW MOUNT BOLLARD</p>  <p>K4/M30 and K12/M50 rated bollards are designed for the highest level of protection. They utilize a shallow 12" embedment base designed to overcome depth restrictions found in conventional bollard set ups. These bollards are used around corporate campuses, government buildings, airports and other urban environments where depths and utilities may be an issue.</p>	<p>SAFE-T-POST BOLLARD</p>  <p>Safe-T-Post bollards are affordable, non-domestically manufactured bollards, designed for applications that do not require a high level of security. Manufactured from stainless steel, they are available in either manual retractable or automatic retractable versions. LED lighting is an option.</p>	

PEDESTRIAN SAFETY SCALE

Other than the Department of State's "K-Rating system" for anti-terrorist and high security government installations, there are no generally accepted building codes or safety standards that exist which can be commonly applied to the placement of bollards in commercial or public locations. There are no guidelines for placement of bollards, impact resistance, required footings, and what specifications a manufacturer must adhere to on the products he sells. Such basic standards are necessary to promote day-to-day protection for people and property in shopping areas, parking lots, walking on or near sidewalks and building entrances, or simply enjoying private and public spaces.

ABOUT THE PEDESTRIAN SAFETY SCALE

Initial steps have been taken to submit The Pedestrian Safety Scale framework to state, federal, and national code authorities. The Pedestrian Safety Scale is featured as a function of two variables: the speed of an impacting vehicle, and the weight of an impacting vehicle. Until standards are set, two assumed weights of vehicles are referenced 4,000 pounds and 5,500 pounds. This guide is for informational purposes only. Always consult a qualified engineer or other specifying professional to review assumptions regarding vehicular threats before construction.

PEDESTRIAN SAFETY SCALE (PSS)

Bollard models listed below are carbon steel. All retractable bollards and lighted bollard outer sleeves are manufactured from stainless steel.

Non retractable bollards are also available in stainless steel (SS models). Base plate bollards should be used as a visual deterrent only.

4,000 LB. VEHICLE - TWO BOLLARD IMPACT									
VEHICLE SPEED	MAX FPS	MAX FT LBS	PSS LEVEL	FIXED MODEL	REMOVABLE MODEL	LIGHTED BOLLARDS	MANUAL RETRACTABLE	ASSISTED LIFT	AUTOMATIC RETRACT
0-5 MPH	7.3	3,340.2	1	IBF03040* IBF03080*	IBR/IBP03040* IBR/IBP03080*	N/A	N/A	N/A	N/A
5-15 MPH	22.0	30,062.1	2	IBF04040* IBF04080*	IBR/IBP04040* IBR/IBP04080*	N/A	LBMRO4040** LBMRO4080**	N/A	N/A
15-25 MPH	36.7	83,505.9	3	IBF06040* IBF06080*	IBR/IBP06040* IBR/IBP06080*	SSL0S6050** SSLS06075**	LBMRO6040**	LBMA06040** LBMA06080**	LBPA06040** LBPA06080**
25-35 MPH	51.3	163,671.5	4	IBF08040* IBF08080*	IBR/IBP08040* IBR/IBP08080*	SSLS08050** SSLS08075**	N/A	LBMA08040** LBMA08080**	LBPA08040** LBPA08080**
35-45 MPH	66.0	270,559.0	5	IBF10040* IBF10080*	IBR/IBP10040* IBR/IBP10080*	SSLS12050**	N/A	LBMA10040** LBMA10080**	LBPA10040** LBPA10080**
45-55 MPH	80.7	404,168.4	6	IBF12040* IBF12080*	IBR/IBP12040* IBR/IBP12080*	SSLS12100**	N/A	LBMA12040** LBMA12080**	LBPA12040** LBPA12080**

AVAILABLE IN

* Carbon steel, stainless steel.

** Stainless steel only.

Disclaimer: These charts and the information provided are offered for general use and are not intended, designed, or appropriate to be the sole source of specifications or engineering documentation. The calculations provided are indicators of probable values and outcomes. Calpipe Security Bollards makes no warranty, expressed or implied, and the use of this information should not be used as a basis for legal contracts for goods or services. Always consult a professional engineer.

SAMPLE FOOTINGS

To ensure that bollards utilize their full impact capabilities, it is extremely important to combine the bollard with a properly engineered footing. In most installations, a strip footing is the best and strongest to use. If a strip footing is not practical for your site, individual bollard footings would have to be utilized.

Calpipe Security Bollards always recommends that a local engineer be consulted on installations as soil conditions, water tables, and frost lines will vary from region to region.

Example Strip Footing



Example Individual Footing



INSTALLATION

When it comes to installation there are a number of variables to consider. It is recommended to source 2-3 quotes from local contractors to compare before initiating the project.

PEDESTRIAN SAFETY SCALE (PSS)

Bollard models listed below are carbon steel. All retractable bollard and lighted bollard outer sleeves are manufactured from stainless steel. Non retractable bollards are also available in stainless steel (SS models). Base plate bollards should be used as a visual deterrent only.

This guide is for informational purposes only. Always consult a qualified engineer or other specifying professional to review assumptions regarding vehicular threats before construction.

5,000 LB. VEHICLE - TWO BOLLARD IMPACT									
VEHICLE SPEED	MAX FPS	MAX FT LBS	PSS LEVEL	FIXED MODEL	REMOVABLE MODEL	LIGHTED BOLLARDS	MANUAL RETRACTABLE	ASSISTED LIFT	AUTOMATIC RETRACT
0-5 MPH	7.3	4,592.8	1	IBF04040*	IBR/IBP04040*	N/A	LBMR04040** LBMR04080**	N/A	N/A
5-15 MPH	22.0	41,335.4	2	IBF04080*	IBR/IBP04080*	N/A	LBMR04080**	N/A	N/A
15-25 MPH	36.7	114,820.6	3	IBF06040* IBF06080*	IBR/IBP06040* IBR/IBP06080*	SSLS06050** SSLS06075**	LBMR06040**	LBMA06040** LBMA06080**	LBPA06040** LBPA06080**
25-35 MPH	51.3	225,048.3	4	IBF08040* IBF08080*	IBR/IBP08040* IBR/IBP08080*	SSLS08050** SSLS08075**	N/A	LBMA08040** LBMA08080**	LBPA08040** LBPA08080**
35-45 MPH	66.0	372,018.6	5	IBF10040* IBF10080*	IBR/IBP10040* IBR/IBP10080*	SSLS12050**	N/A	LBMA10040** LBMA10080**	LBPA10040** LBPA10080**
45-55 MPH	80.7	555,731.5	6	IBF12040* IBF12080*	IBR/IBP12040* IBR/IBP12080*	SSLS12100**	N/A	LBMA12040** LBMA12080**	LBPA12040** LBPA12080**

AVAILABLE IN

* Carbon steel, stainless steel.

** Stainless steel only.

Disclaimer: These charts and the information provided are offered for general use and are not intended, designed, or appropriate to be the sole source of specifications or engineering documentation. The calculations provided are indicators of probable values and outcomes. Calpipe Security Bollards makes no warranty, expressed or implied, and the use of this information should not be used as a basis for legal contracts for goods or services. Always consult a professional engineer.

MANUAL & ASSISTED LIFT RETRACTABLE BOLLARDS

MANUAL LIFT BOLLARD

The manual lifting bollard is perfect for all of your light security needs. From traffic control to limited access pathways, this bollard is the obvious choice for ease of use and economical, maintenance-free operation. The same key which is used to unlock and lower the bollard is also used to lock the cover plate when the bollard is in the retracted position.

The LBMR series is made from stainless steel and polished to a #4 finish. It is designed to last for years, withstanding frequent operation, and can operate under very cold conditions and climates.

MANUAL OPERATED RETRACTABLE RECOMMENDED USES

LIGHT SECURITY

Parking Garages
Traffic Control
Car Dealerships
Schools

MANUAL OPERATED RETRACTABLE BOLLARD

LIGHT SECURITY

Item Number	Diameter	Length Above Grade
LBMR04040	4"	36"
LBMR04080	4"	36"
LBMR06040	6"	36"

AVAILABLE MATERIALS

Stainless Steel



LBMR SERIES

MANUAL LIFT BOLLARD

Sometimes retractable or telescoping bollards are required for a specific site. Our entry level model is manually operated, easily lifts and locks into place. When the bollard retracts, the stainless steel lid locks with a tamper resistant key for extra security. The LBMR Manual Lift bollard is manufactured from Type 304 stainless steel for long-lasting durability, low maintenance and ease of installation and operation. It is our most economical retractable bollard.

MANUAL ASSISTED LIFT

If your site requires heavy security and flexibility, the ideal option is to install retractable bollards which do not require manual lifting. The manual assisted retractable bollard was designed for these higher security applications. We manufacture these bollards with a heavy industrial grade gas strut which has the capability to lift hundreds of pounds with just the twist of a key.

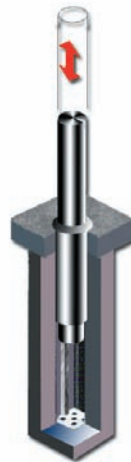
MANUAL ASSISTED LIFT

The manual assisted lift bollard is best utilized in areas with restricted access and high security needs. The bollard operates with very little effort on the users' part. With the turn of a key, the bollard rises up and locks into position.

An optional Auto-Tender is available to monitor the air pressure inside the manual assisted lift bollard. If the air pressure in a bollard falls below the PSI threshold, the Auto-Tender will fill up the bollard until the proper PSI levels are attained. This eliminates the need to monitor or fill up the tanks weekly.

AVAILABLE MATERIALS

Stainless Steel



LBMA SERIES

MANUAL ASSISTED LIFT RECOMMENDED USAGE

MEDIUM SECURITY	HEAVIER SECURITY
Malls	Government Facilities
Farmer's Markets	Oil Refineries
Stadiums/Arenas	Chemical Plants
College/Universities	Military Facilities

MANUAL ASSISTED LIFT BOLLARD STAINLESS STEEL

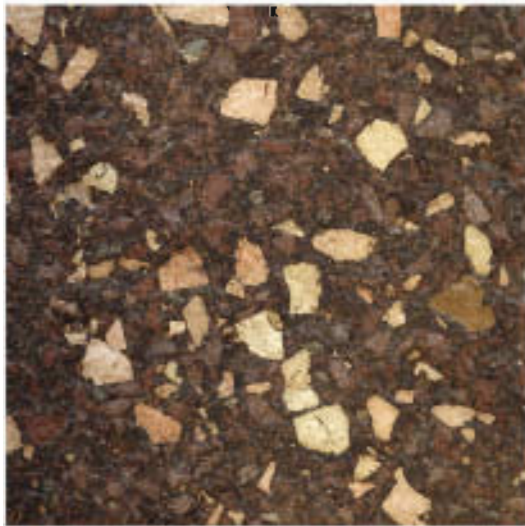
MEDIUM SECURITY			HEAVIER SECURITY		
Item Number	Diameter	Length Above	Item Number	Diameter	Length Above
LBMA06040	6"	36"	LBMA08080	8"	36"
LBMA06080	6"	36"	LBMA10040	10"	36"
LBMA08040	8"	36"	LBMA10080	10"	36"
			LBMA12040	12"	36"
			LBMA12080	12"	36"



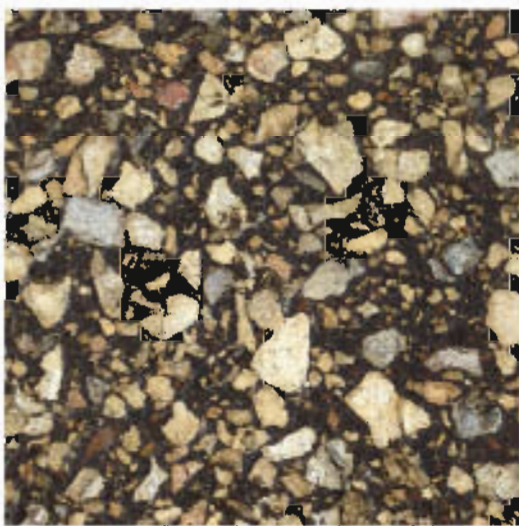
ADA PAVERS
4x8 with Domes
PINE HALL BRICK



Cold Spring
Granite
Royal Sable
Thermal Finish



Hanover Prest
Asphalt Pavers
Hexagonal
Matrix A80018



Hanover Prest
Asphalt Pavers
Hexagonal
Matrix A80033



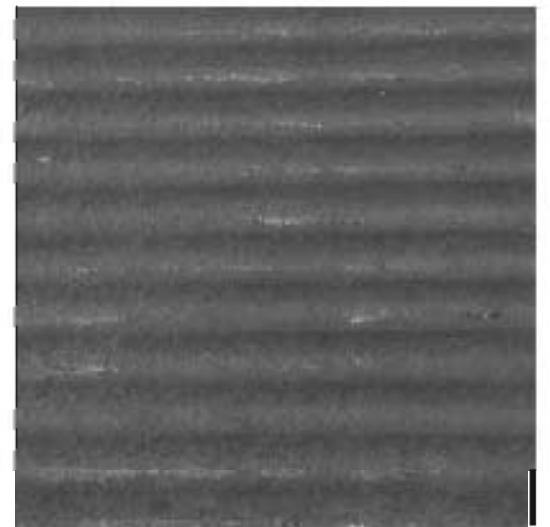
Hanover Prest
Asphalt Pavers
Hexagonal
Matrix 80011



Hanover Prest
Pavers
Matric 2550
12x12



Hanover Prest
Pavers
Matric 2379
18x24 and
24x36



Hanover Prest
Pavers
Charcoal
Finish #22
12x24



Hanover Prest
Asphalt Pavers
Hexagonal
Matrix 80014

REV.	ALTERATION	DATE	BY

KING U.S. ORDER NO.:
A02587

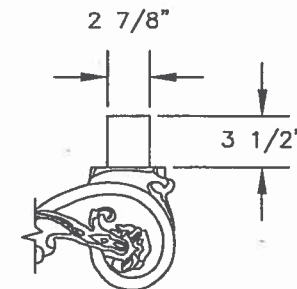
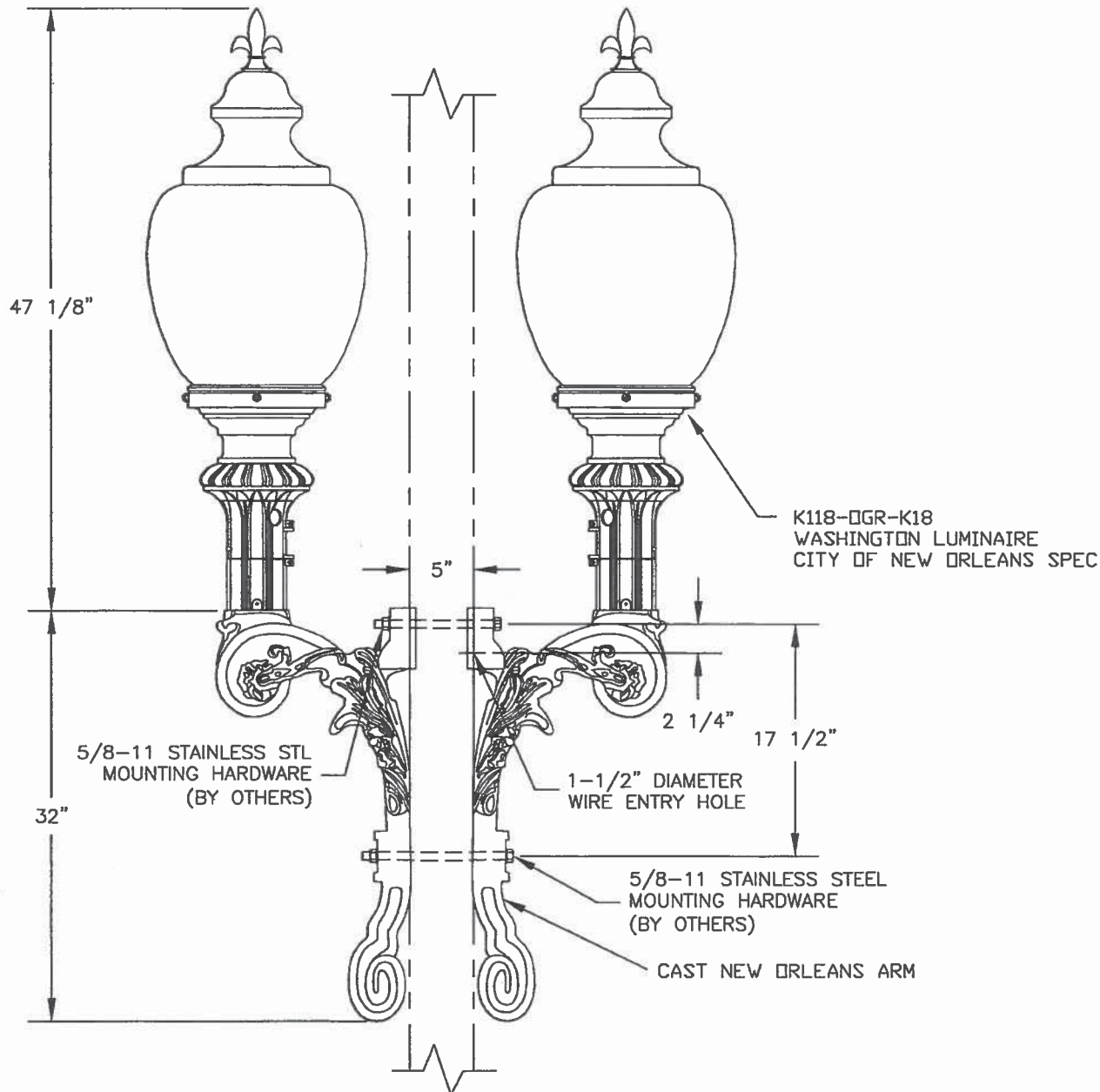
CUSTOMER ORDER NO.:
5683JAY-1

KING CANADA ORDER NO.:
K00719

ARM SPECIFICATIONS

CATALOGUE NO.: KA59
CAST NEW ORLEANS ARM

QUANTITY:
MATERIAL: CAST ALUMINUM
PAINT: NEW ORLEANS GREEN PAINT



CUSTOMER APPROVAL: _____



KING LUMINAIRE
COMPANY INC.

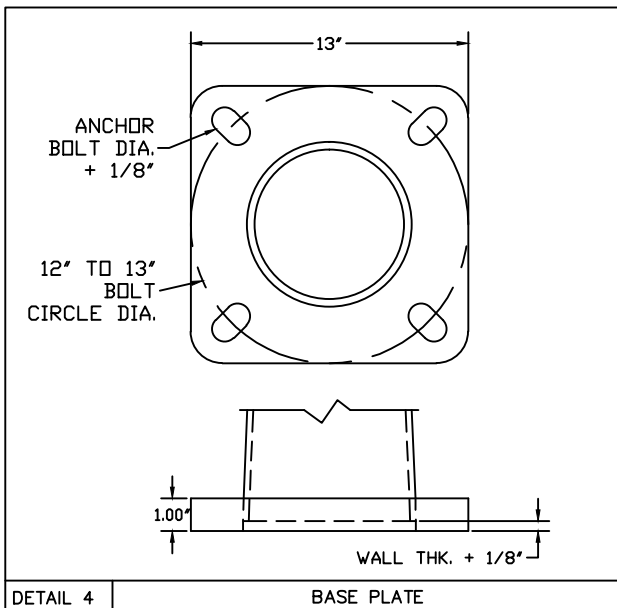
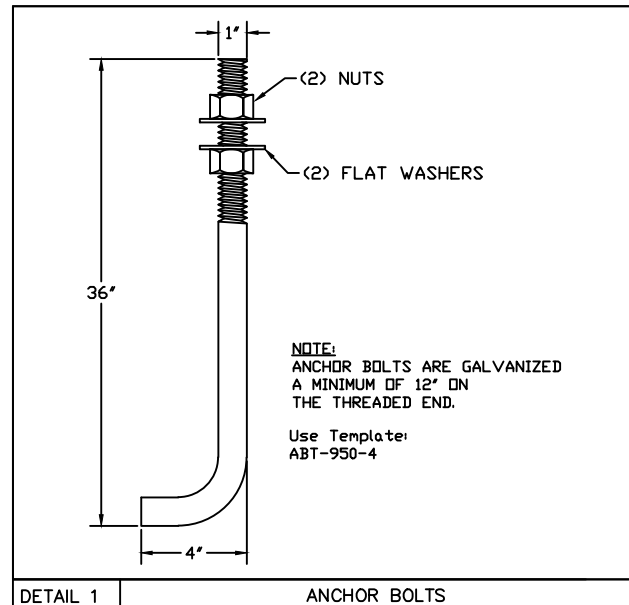
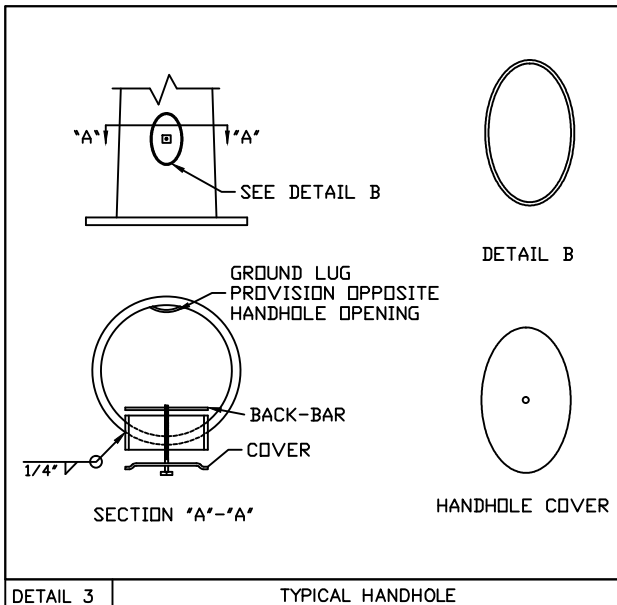
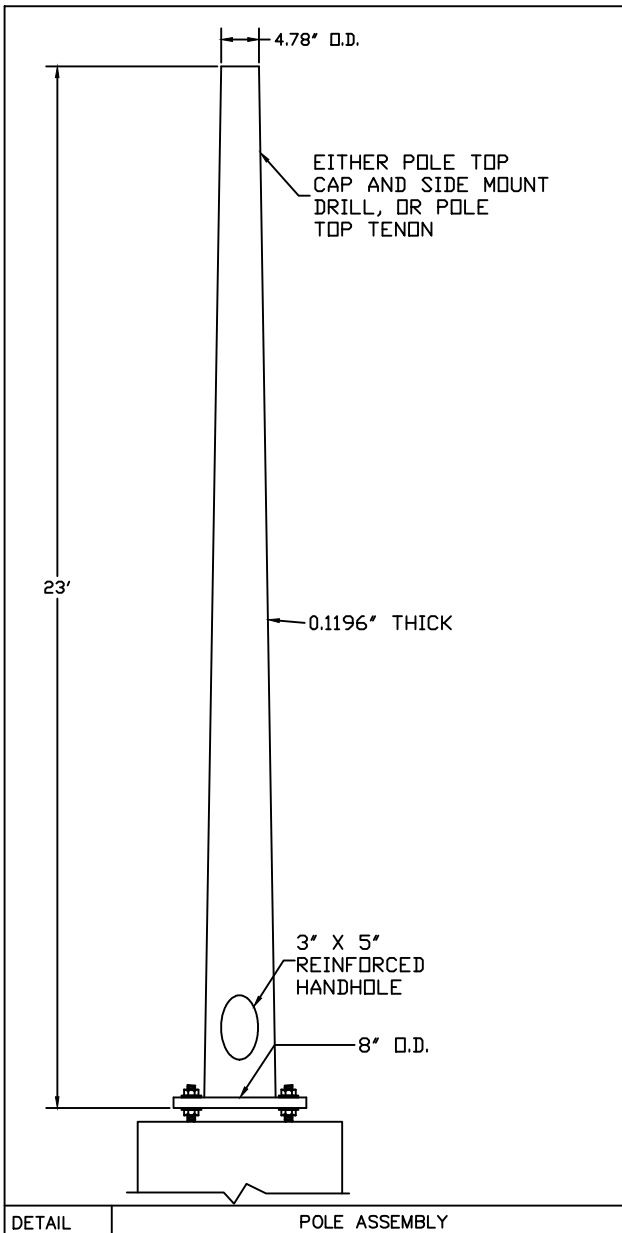
840 WALKER'S LINE, P.O. BOX 7,
BURLINGTON, ONTARIO, CANADA L7R 3X9

P.O. BOX 266 JEFFERSON, OHIO
1153 STATE ROUTE 48N
U.S.A. 44047

DRAWING NAME: APPROVAL DWG.	DWG NUMBER A02587-1	DATE: 8/20/09	DWG BY: M.Y	REV.
PROJECT/CUSTOMER: MAGAZINE STREET NEW ORLEANS				CHK.BY

KI-ORDER\A02587

KA59-NEW ORLEANS GREEN



COMPONENT	SPECIFICATION
POLE SHAFT	ASTM A595 GR. A
MISC. STEEL	ASTM A36
ANCHOR BOLTS	ASTM F1554 GR. 55
BASE PLATE	ASTM A572 GR. 50

GENERAL NOTES:

1. ALL HARDWARE TO BE GALVANIZED TO ASTM A153.
2. POLE ASSEMBLY TO BE EITHER GALVANIZED PER ASTM A123. AND/OR POWDER COAT FINISHED AND WRAPPED.
3. ALL WELDING TO CONFORM TO AWS D1.1 MOST RECENT EDITION.
4. DESIGN WIND SPEEDS INCLUDE 1.3 GUST FACTOR.
5. DESIGNS ARE BASED AGAINST ASSHTO 2002 STANDARDS.
6. REFER TO GENERAL INSTALLATION INSTRUCTIONS PRIOR TO ASSEMBLY.

DETAIL 2 MATERIAL SPECIFICATIONS

MSM

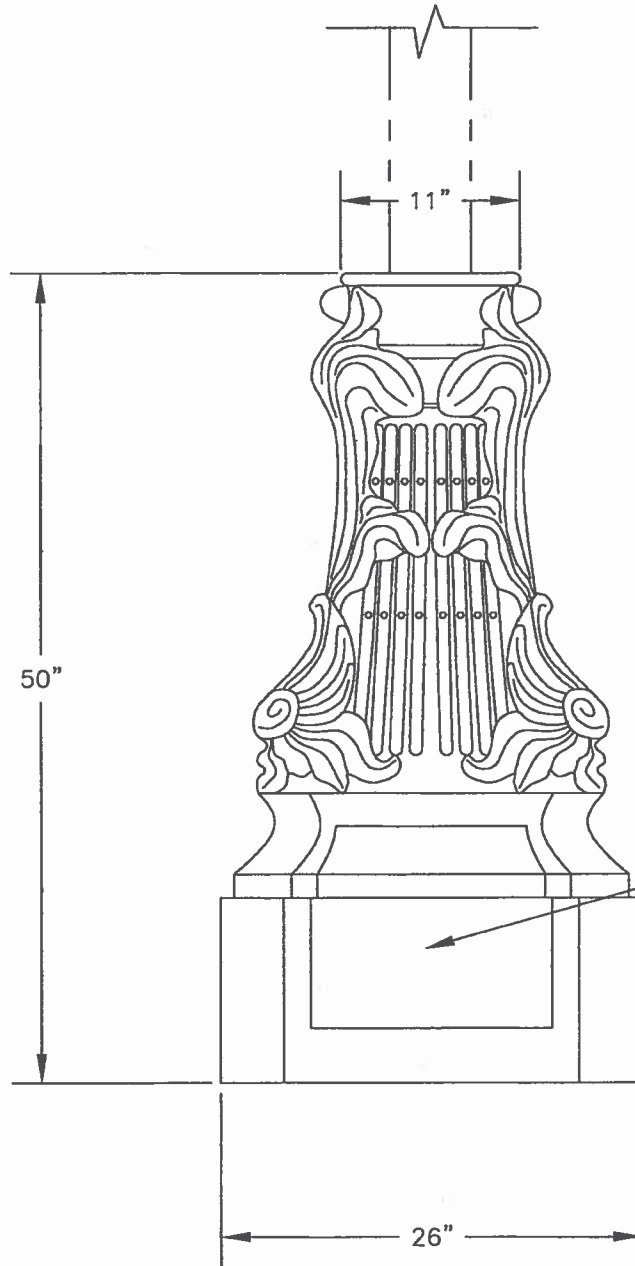
Makers Sales and Marketing, LLC

PO BOX 14537
HALTOM CITY, TX 76117
METRO (817) 834-5538
TOLL FREE (866) 724-4527
FAX (817) 831-6088

DATE: 12/16/13	REV.:	CHECKED BY:
DRAWING NUMBER: MRT2380AB	DRAWN BY: LRB	

REV.	ALTERATION	DATE	BY

KING U.S. ORDER NO.: A02587	CUSTOMER ORDER NO.: 5683JAY-1
KING CANADA ORDER NO.: K00719	



BASE SPECIFICATIONS

CATALOGUE NO.: KFWM SPLIT BASE


QUANTITY:

MATERIAL: CAST IRON

PAINT: NEW ORLEANS GREEN PAINT

CAST DOOR
(ONE SIDE ONLY)

CUSTOMER APPROVAL: _____

 KING LUMINAIRE COMPANY INC. <small>840 WALKER'S LINE, P.O. BOX 7, BURLINGTON, ONTARIO, CANADA L7R 3X9</small> <small>P.O. BOX 266 JEFFERSON, OHIO 1153 STATE ROUTE 46N U.S.A. 44047</small>				
DRAWING NAME: APPROVAL DWG.	DWG NUMBER A02587-2	DATE: 8/20/09	DWG BY: M.Y	REV.
PROJECT/CUSTOMER: MAGAZINE STREET NEW ORLEANS				CHK. BY
\ki-ORDER\A02587				

KFWM-NEW ORLEANS GREEN