

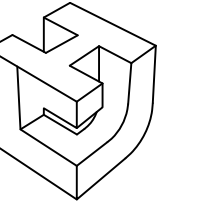




PROJECT DATA
 SWC OF N. CARROLLTON AVE. & TOULOUSE ST.
 NEW ORLEANS, LOUISIANA

SHOPPING CENTER

SEC N. CARROLLTON AVE.
 & TOULOUSE ST.
 NEW ORLEANS, LA
 PROJECT TYPE: NEW STORES
 DEAL TYPE: TURNKEY



LINFIELD, HUNTER & JUNIUS, INC.
 PROFESSIONAL ENGINEERS, ARCHITECTS
 LANDSCAPE ARCHITECTS AND SURVEYORS
 3608 18th Street, Suite 200
 Metairie, Louisiana 70002

© 2011 by Linfield, Hunter & Junius, Inc.

CONSULTANT:

DEVELOPER:



FIRST HARTFORD REALTY CORP.
 149 COLONIAL RD.
 MANCHESTER, CT 06045
 TEL (860) 646-6555

SEAL:

PRELIMINARY
 FOR REVIEW
 PURPOSES ONLY

REVISIONS:

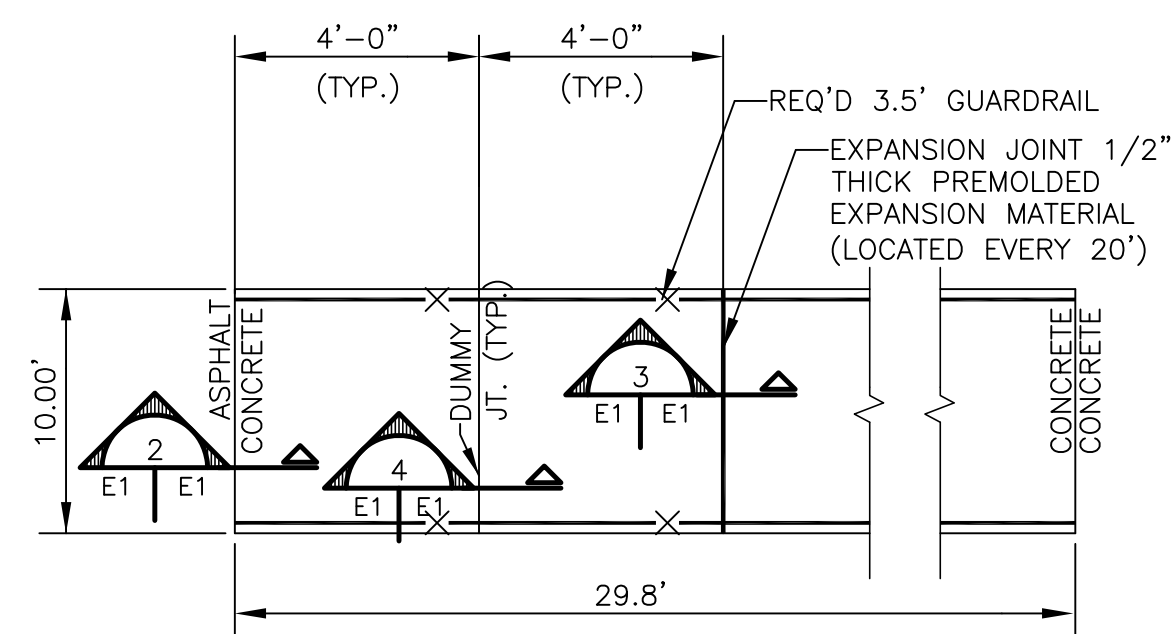
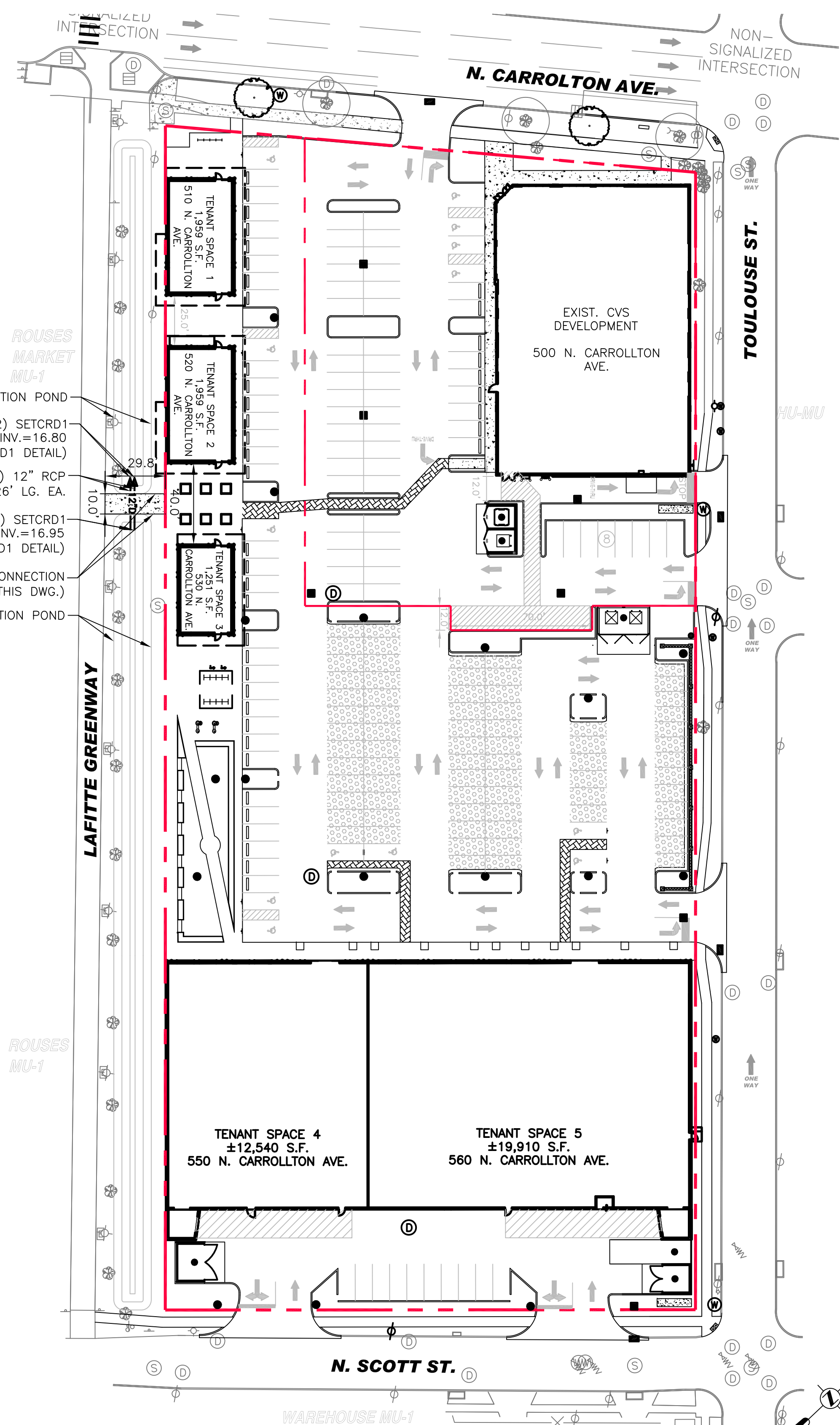
DRAWING BY: LHJ
 DATE: 6/7/16
 JOB NUMBER: 11-31RR
 TITLE:

BIKE PATH EXHIBIT

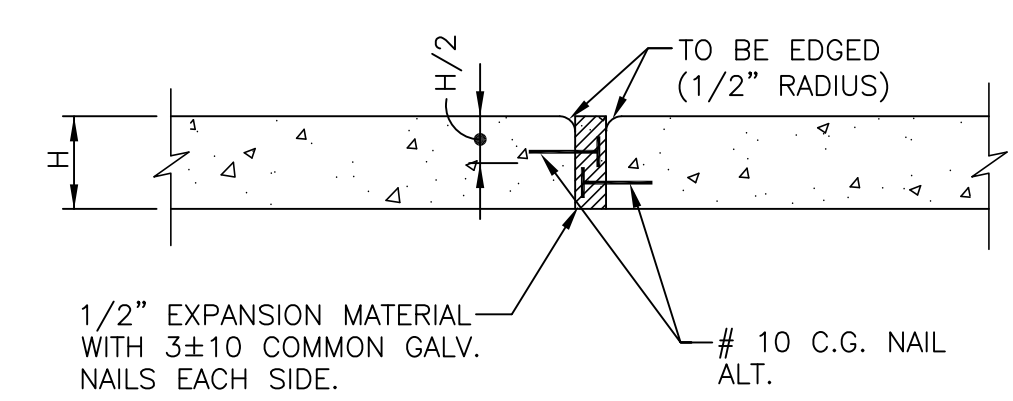
SHEET NUMBER:

E1 OF E1

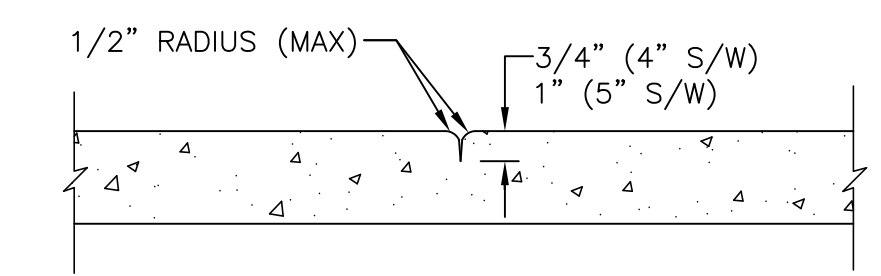
COMMENTS:
 NOT RELEASED FOR CONSTRUCTION



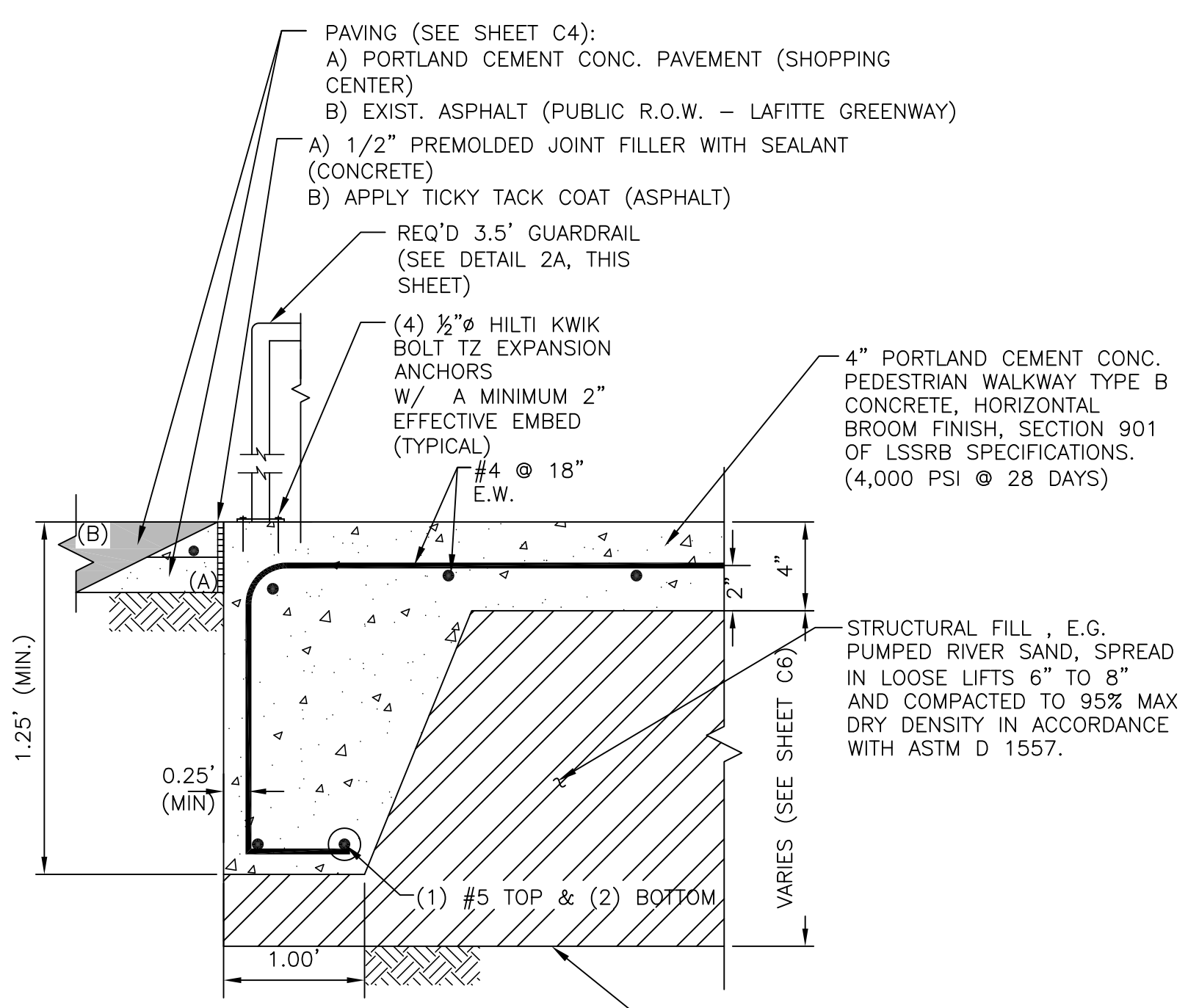
1 4" P.C.C.P. PEDESTRIAN PATH DETAIL
 E1 | E1 NOT TO SCALE



3 EXPANSION JOINT (TYPE "A")
 E1 | E1 (MAXIMUM SPACING 20'-0") NOT TO SCALE

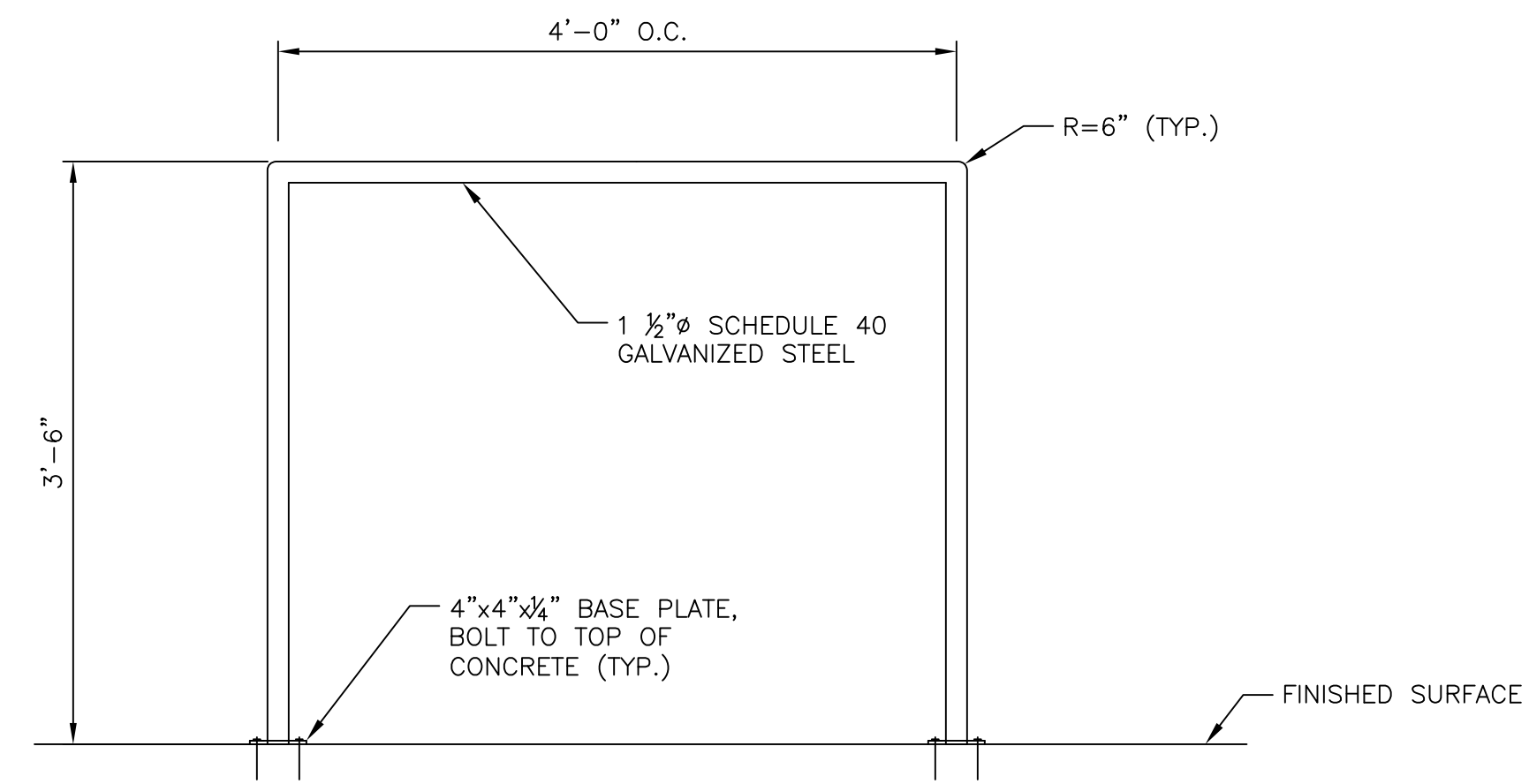


4 HAND TOOLED CONTRACTION JOINT
 E1 | E1 (MAXIMUM SPACING 4'-0") NOT TO SCALE



NOTE:
 CONCRETE SHALL BE LAID PER LSSRB SECTIONS 601 & 901 SPECIFICATIONS
 EXISTING SUBGRADE SHALL BE PROOF-ROLLED. ANY DEPRESSIONS OR WEAK AREAS IDENTIFIED SHALL BE CLEANED AND BACKFILLED WITH STRUCTURAL FILL.

2 SECTION
 E1 | E1 NOT TO SCALE



2A GUARDRAIL DETAIL
 E1 | E1 NOT TO SCALE

BIKE PATH EXHIBIT

