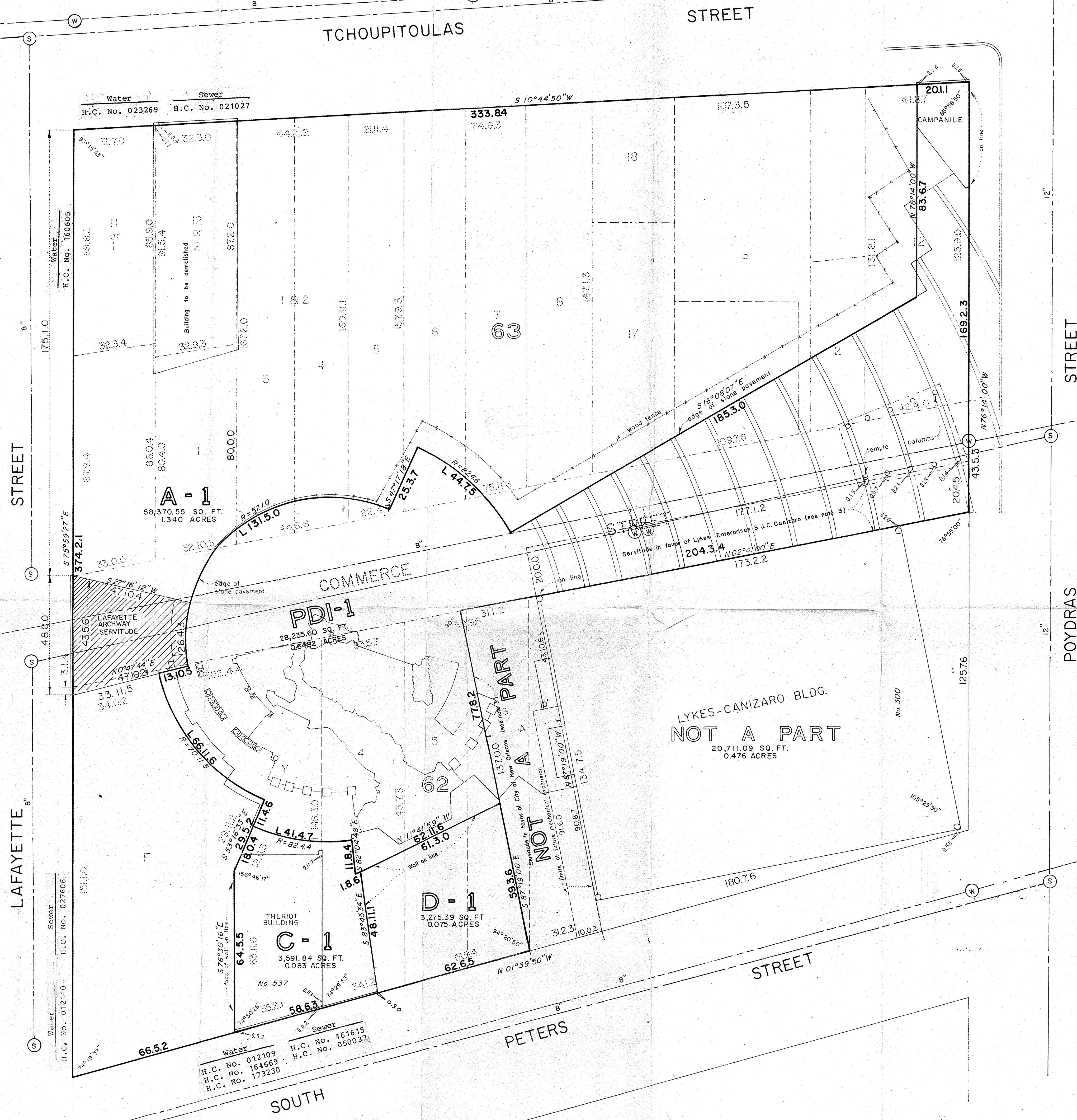


PIAZZA D'ITALIA

SQ. NO 62-63

FIRST DISTRICT



GENERAL NOTES

1. The City of New Orleans acquired Fee Title in the following manner:
 All of Square No. 62 lying south of a line drawn perpendicular to Commerce Street (now closed) and running to the northeast corner of Lot No. 6 on S. Peters St., in an act of exchange with Joseph C. Canizaro, on April 1, 1974, registered in C.O.B. 723 Fo. 179-182, N.A. No. 154078.
 The greater portion of Square No. 63, being all of Square No. 63 except the lot no. 12 fronting on Poydras St. formerly belonging to the Female Orphan Society, in the same act of exchange with Joseph C. Canizaro above referred to.
 The lot no. 12 in Square No. 63, fronting on Poydras St. by purchase from the Female Orphan Society, on April 15, 1975, registered in C.O.B. 730 Fo. 81, N.A. No. 159429.

2. The City of New Orleans sold Lot F to the American Italian Renaissance Foundation, Inc. on April 26, 1979, registered in C.O.B. 749 Fo. 516, N.A. No. 284813.

3. Servitudes affecting City Property hereon are as follows:

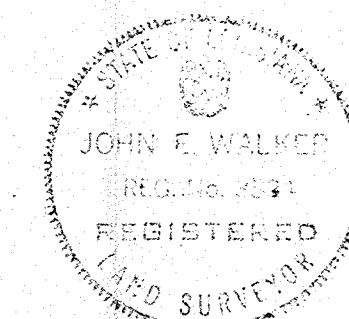
An exchange of servitudes between the City of New Orleans and Lykes Enterprises, Inc. and Joseph C. Canizaro, on December 29, 1978, C.O.B. 758E Fo. 447 grants to the City of New Orleans a servitude depicted as tract A hereon, and grants to Lykes and Canizaro a servitude on a portion of former Commerce Street.

APPROVED BY CITY PLANNING COMMISSION
 By *Patricia A. Fretwell*
 Acting Assistant Director, City Planning Commission
 Subdivision Docket No. 39/92 date 11/16/92

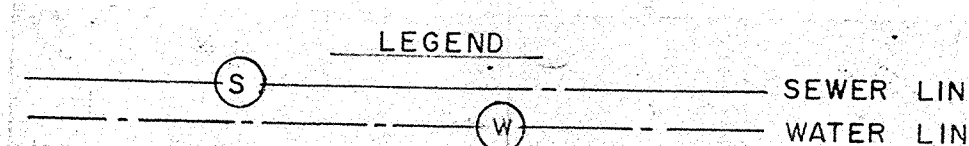
This is a resubdivision of Lots 1, 1 or 11, 2 or 12, 3, 4, 5, 6, 7, 8, 17, 18, P, 2 and 12, Square 63, that portion of Commerce Street lying between Lafayette Street and Poydras Street, Lots P, V, 4, a portion of Lot 6 and Lot 5, Square 62 into Lots A-1, PDI-1, C-1 and D-1.

NOVEMBER 16, 1992, RECERTIFIED CORRECT.

SEE ORD. NO. 15,465 M.C.S. OCTOBER 15, 1992
 REVOKING THE DEDICATION OF COMMERCE STREET BETWEEN LAFAYETTE AND POYDRAS STREET.
 Survey for The City of New Orleans
 New Orleans, August 10, 1992
 Certified correct, *John E. Walker*
 Civil Engineer



THERE ARE NO TREES IN THE RIGHT OF WAY EXCEPT AS SHOWN.



SCALE: 1" = 20'

OFFICE OF
 JOHN E. WALKER, INC.