

BEHRMAN PARK NATATORIUM

CITY OF NEW ORLEANS
MAYOR MITCHELL J. LANDRIEU

NEW ORLEANS CITY COUNCIL
STACEY HEAD
COUNCILMEMBER-AT-LARGE

JASON ROGERS WILLIAMS
COUNCILMEMBER-AT-LARGE

SUSAN G. GUIDRY
DISTRICT "A" COUNCILMEMBER

LATOYA CANTRELL
DISTRICT "B" COUNCILMEMBER

NADINE M. RAMSEY
DISTRICT "C" COUNCILMEMBER

JARED C. BROSSETT
DISTRICT "D" COUNCILMEMBER

JAMES AUSTIN GRAY II
DISTRICT "E" COUNCILMEMBER

2529 GENERAL MEYER AVE.
NEW ORLEANS, LA 70114

DESIGN DEVELOPMENT SUBMITTAL

ARCHITECT

SIZELER THOMPSON BROWN ARCHITECTS

REGIONAL DESIGN GROUP, LLC
300 LAFAYETTE STREET, SUITE 200
NEW ORLEANS, LOUISIANA 70130
(504) 523-6472 FAX (504) 529-1181

CONSULTANTS

MECHANICAL/ ELECTRICAL ENGINEER

LUCIEN T. VIVIEN JR. & ASSOCIATES

3001 22ND ST.
METAIRIE, LA 70002
(504) 218-5409

LANDSCAPE ARCHITECT

DALY SUBLETTE LANDSCAPE

216 RIDGELAKE DR.
METAIRIE, LA 70001
(504) 832-9975

AQUATIC CONSULTANT

COUNSILMAN + HUNSAKER

10733 SUNSET OFFIC DR.
SUITE 400
ST. LOUIS, MO 63127
(314) 894-1245

CIVIL/STRUCTURAL ENGINEER

JULIEN ENGINEERING & CONSULTANTING

2916 GENERAL DE GAULLE DR.
SUITE 200
NEW ORLEANS, LA 70114
(504) 366-8726

NOT FOR CONSTRUCTION



SIZELER THOMPSON BROWN ARCHITECTS
REGIONAL DESIGN
300 LAFAYETTE STREET, SUITE 200
NEW ORLEANS, LOUISIANA 70130
(504) 523-6472 FAX (504) 529-1181

Revisions		
No.	Description	Date

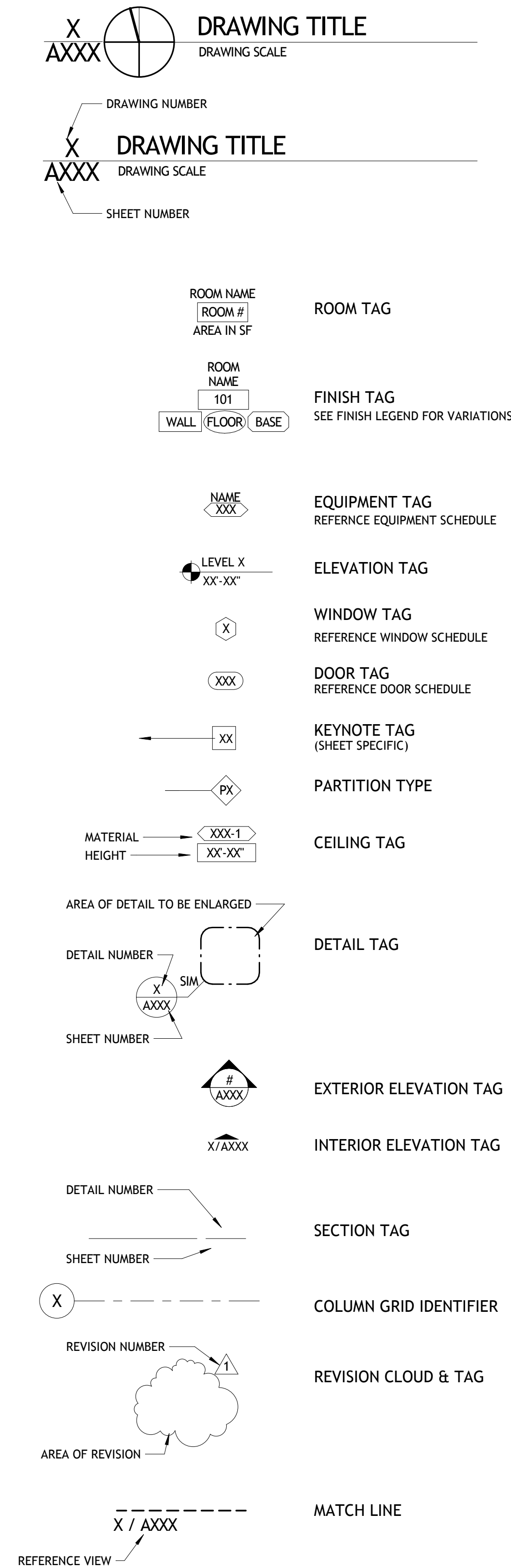
BEHRMAN PARK NATATORIUM

2529 General Meyer Ave.
New Orleans, LA 70114

TITLE SHEET

seal	project number	drawing number G101
	date	
	phase	
	100% DD SUBMITTAL	

SYMBOLS



PROJECT STATISTICS

REGULATORY AGENCIES

OFFICE OF STATE FIRE MARSHAL
7919 INDEPENDENCE BLVD.
BATON ROUGE, LA 70806
(225) 925-4911
NFPA LIFE SAFETY CODE - 2003 EDITION

ORLEANS PARISH CODE ENFORCEMENT
DEPARTMENT OF PERMITS AND INSPECTIONS

LOCATION

2529 GENERAL MEYER AVE.
NEW ORLEANS, LA

ZONING

PARISH OF ORLEANS COMPREHENSIVE ZONING ORDINANCE
05-N, DISTRICT 12

OCCUPANCY CLASSIFICATION

ASSEMBLY, BUSINESS - IBC 2012 EDITION
ASSEMBLY, BUSINESS - NFPA 101 2012 EDITION
IBC PLUMBING CODE 2012 EDITION

CONSTRUCTION CLASSIFICATION

IBC 2012: FULLY SPRINKLERED

AREA

13,590 - SF

STORIES

ONE

TABLE OF CONTENTS

G101	TITLE SHEET
G102	CODE ISSUES, SHEET INDEX, ETC.
A101	SITE PLAN
A201	1ST FLOOR PLAN
A221	ENLARGED PLANS & ELEVATIONS
A300	EXTERIOR ELEVATIONS
A301	EXTERIOR ELEVATIONS
A321	BUILDING SECTIONS
A322	BUILDING SECTIONS
A351	WALL SECTIONS
A352	WALL SECTIONS
A371	SECTION DETAILS
A601	REFLECTED 1ST FLOOR CEILING PLANS
A701	FINISH PLAN
A901	PARTITION TYPES
S001	STRUCTURAL NOTES
S002	STRUCTURAL NOTES
S101	FOUNDATION PLAN
S102	SLAB PLAN
S103	FOUNDATION DETAILS
S201	FRAMING PLAN
S301	ROOF FRAMING PLAN
S302	ROOF DECKING
S401	FRAMING ELEVATIONS
S402	FRAMING ELEVATIONS
S403	FRAMING ELEVATIONS
S404	BUILDING FRAMING SECTIONS
S411	FRAMING DETAILS
S801	AXONOMETRICS
S802	AXONOMETRICS
SP0.0	POOL REFERENCE PLAN
SP1.0	POOL PLAN
SP1.1	POOL SECTIONS
SP1.2	POOL DETAILS
SP1.3	POOL DETAILS
SP1.4	POOL DETAILS
SP2.0	SPRAYGROUND PLAN AND SECTION
SP2.1	SPRAYGROUND DETAILS
SP2.2	SPRAYGROUND DETAILS
SP5.0	POOL MECHANICAL ROOM PLAN AND SECTIONS
SP5.1	SURGE TANK PLAN AND SECTIONS
SP5.2	BALANCE TANK PLAN AND SECTIONS
SP5.3	POOL MECHANICAL DETAILS
SP5.4	POOL MECHANICAL DETAILS
SP5.5	POOL MECHANICAL DETAILS
SP6.0	POOL SYSTEMS SCHEMATIC
SP6.1	SPRAYGROUND SYSTEMS SCHEMATIC
M101	MECHANICAL FLOOR PLAN
M102	MECHANICAL ROOF PLAN
M201	MECHANICAL SCHEDULES
M202	MECHANICAL DETAILS
M203	MECHANICAL DETAILS
MEP101	SITE PLAN - MECHANICAL, ELECTRICAL, PLUMBING
E101	LIGHTING FLOOR PLAN
E201	POWER FLOOR PLAN
E202	ELECTRICAL ROOF PLAN
E301	SPECIAL SYSTEMS FLOOR PLAN
E401	ELECTRICAL FEEDER DIAGRAM
E402	ELECTRICAL DETAILS AND SCHEDULES
E403	LIGHTNING PROTECTION DETAILS
P101	FLOOR PLAN - SEWER, WASTE, AND VENT
P102	FLOOR PLAN - WATER AND GAS PLUMBING
P201	PLUMBING RISER DIAGRAM
P202	PLUMBING SCHEDULES
P203	PLUMBING DETAILS

GENERAL NOTES

- ALL MATERIALS AND WORK, INCIDENTAL TO THE CONSTRUCTION OF THIS PROJECT, SHALL CONFORM TO ALL GOVERNING CODES, AND REGULATIONS OF AGENCIES IN AUTHORITY.
- CONTRACTOR SHALL PROVIDE ALL PUBLIC PROTECTIONS NECESSARY AS REQUIRED BY LAW.
- THE DRAWINGS, SPECIFICATIONS AND ANY SUBSEQUENTLY ISSUED ADDENDA, AMENDMENTS OR SUCH CHANGE ORDERS APPROVED BY THE OWNER AND THE CONTRACTOR ARE PART OF THESE CONTRACT DOCUMENTS.
- DO NOT SCALE DRAWINGS. CONSULT WITH THE ARCHITECT REGARDING ANY ITEMS IN THE CONTRACT DOCUMENTS THAT REQUIRE CLARIFICATION.
- VERIFY LOCATION OF ALL EQUIPMENT WITH THE ARCHITECT, PRIOR TO INSTALLATION.
- TRASH SHALL BE REMOVED FROM THE SITE NOT LESS THAN TWICE WEEKLY.
- THE GENERAL CONTRACTOR SHALL VERIFY EXISTING CONDITIONS PRIOR TO COMMENCING WORK AND REPORT ANY AND ALL DISCREPANCIES TO THE ARCHITECT.
- CONTRACTOR VEHICLES AND EQUIPMENT NECESSARY FOR CONSTRUCTION MAY BE PARKED ON THE SITE. OTHER VEHICLES PARKED ON THE SITE REQUIRE THE OWNER'S PERMISSION.
- WORK INDICATED AS 'NOT IN CONTRACT', 'NIC', OR 'BY OTHERS', SHALL BE PERFORMED BY OWNER'S SEPARATE CONTRACTORS. THE GENERAL CONTRACTOR SHALL COOPERATE TO THE FULLEST EXTENT WITH ALL OTHER CONTRACTORS AND ASSIST IN COORDINATING THE WORK BY SEPARATE CONTRACTORS WITH THE WORK OF THIS CONTRACT.
- NAMING A CERTAIN BRAND, MAKE OR MANUFACTURER IS TO DESIGNATE THE GENERAL STYLE, TYPE, CHARACTER AND QUALITY STANDARD OF THE PRODUCT DESIRED. SUBSTITUTION REQUESTS MUST BE SUBMITTED PRIOR TO BIDDING.
- A SURVEY IS INCLUDED HEREIN FOR REFERENCE ONLY. SIZELER THOMPSON BROWN ARCHITECTS ASSUMES NO LIABILITY FOR ERRORS OR OMISSIONS IN THIS DRAWING.

NOT FOR CONSTRUCTION

VICINITY MAP



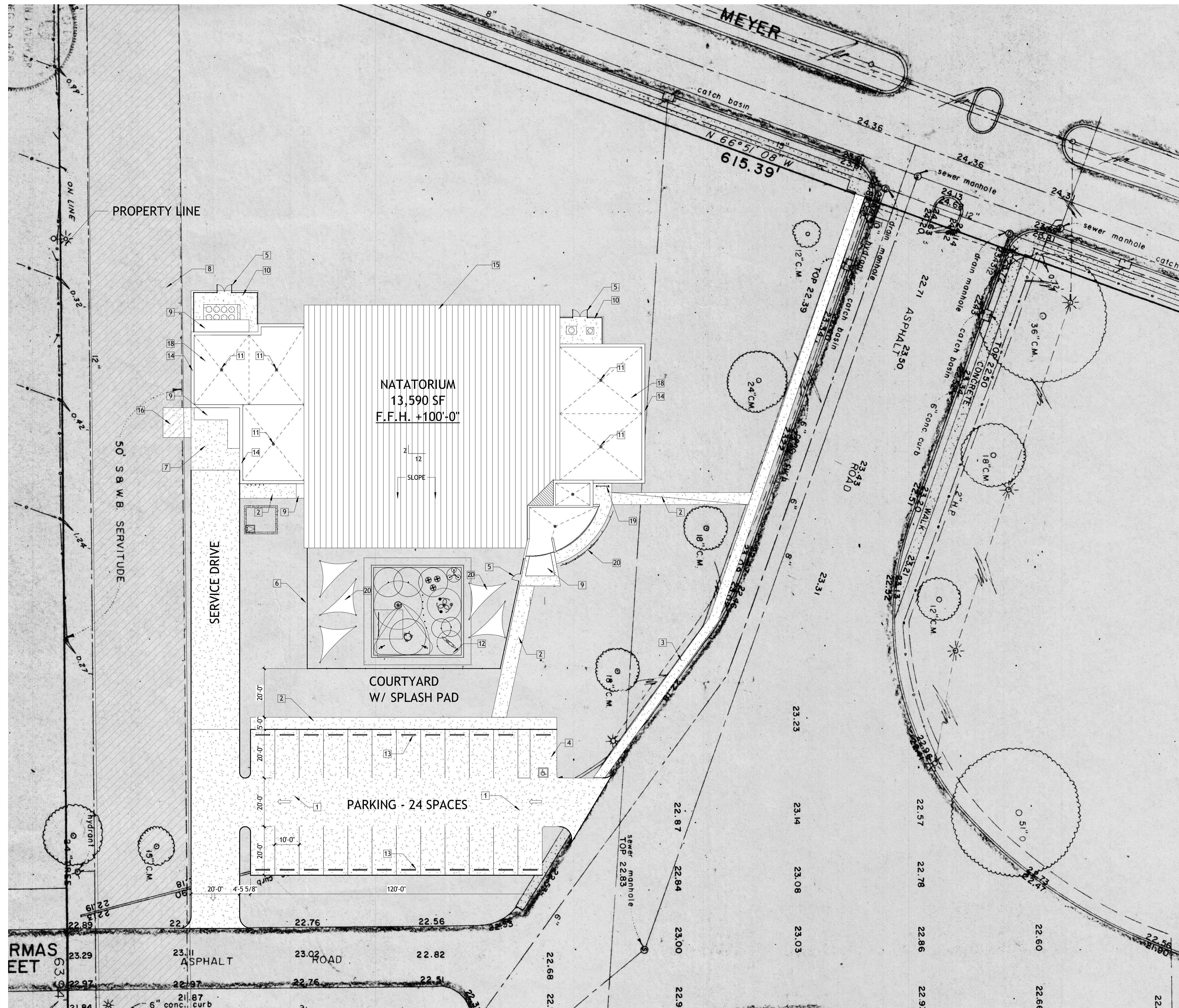
SIZELER THOMPSON BROWN ARCHITECTS
REGIONAL DESIGN
300 LAFAYETTE STREET, SUITE 200
NEW ORLEANS, LOUISIANA 70130
(504) 523-6472 FAX (504) 529-1181

Revisions		
No.	Description	Date

BEHRMAN PARK NATATORIUM
2529 General Meyer Ave.
New Orleans, LA 70114
CODE ISSUES, SHEET INDEX, ETC.

seal	project number 21208.00	drawing number G102
	date 10.18.2016	
	phase 100% DD SUBMITTAL	

10/17/2016 9:46:15 AM



GENERAL SITE PLAN NOTES

- CONTRACTOR TO PROTECT ALL AREAS ADJACENT TO CONSTRUCTION AREAS.
- CONTRACTOR TO COORDINATE W/ CITY OF NEW ORLEANS TO DETERMINE MATERIAL & EQUIPMENT STAGING AREA(S), PARKING, AND COORDINATE ALL OTHER CONSTRUCTION ACTIVITIES, INCLUDING ALL DELIVERIES, AS TO NOT DISRUPT THE PARKS ACTIVITIES.

SITE PLAN KEY NOTES

- 1 CONCRETE PAVED PARKING LOT
- 2 CONCRETE SIDEWALK
- 3 EXISTING SIDEWALK TO REMAIN
- 4 HANDICAP PARKING SPACE
- 5 LOCKABLE GATE
- 6 PERIMETER GATE AT COURTYARD
- 7 LOADING DOCK
- 8 50'-0" UTILITY SERVITUDE
- 9 ALUMINUM CANOPY
- 10 COMPRESSOR YARD
- 11 ROOF DRAIN
- 12 SPLASH PAD
- 13 CONCRETE WHEEL STOP
- 14 METAL COPING OVER PARAPET
- 15 SLOPED STANDING SEAM METAL ROOF
- 16 DUMPSTER PAD
- 17 SHADE SCREEN & BUILDING SIGNAGE
- 18 MODIFIED BITUMEN LAYERED TAPERED ROOF
- 19 BICYCLE RACK
- 20 TENSILE CANOPY STRUCTURE
- 21 PERFORATED SUN SCREEN W/ RAISED LETTERING

NOT FOR CONSTRUCTION

SIZELER THOMPSON BROWN ARCHITECTS
REGIONAL DESIGN
 300 LAFAYETTE STREET, SUITE 200
 NEW ORLEANS, LOUISIANA 70130
 (504) 523-6472 FAX (504) 529-1181

Revisions		
No.	Description	Date

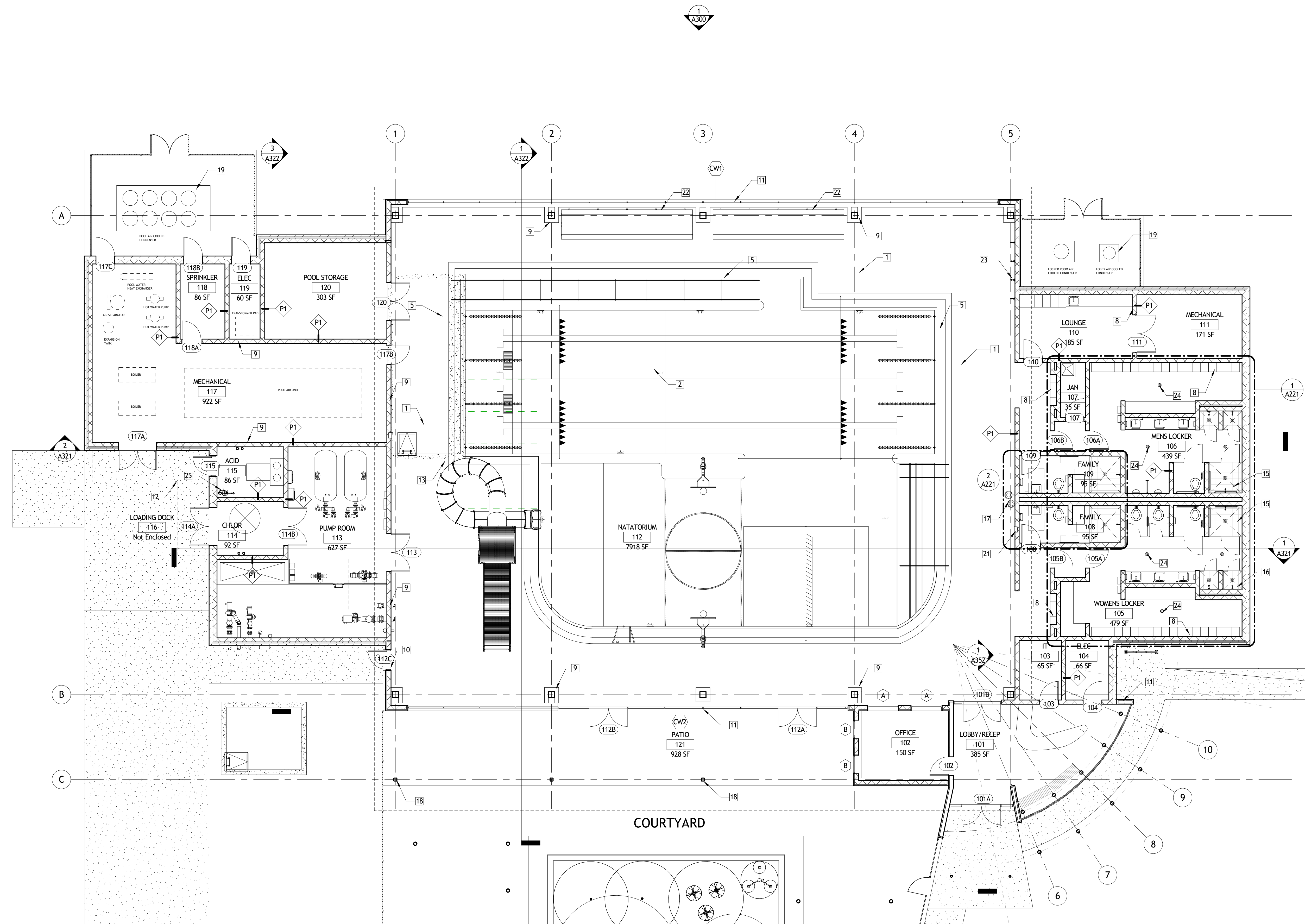
BEHRMAN PARK NATATORIUM

2529 General Meyer Ave.
 New Orleans, LA 70114

SITE PLAN		drawing number
project number	21208.00	A101
date	10.18.2016	
phase	100% DD SUBMITTAL	

1 SITE PLAN
 A101 1" = 20'-0"

D:\Projects\21208.00 Behrman Natatorium\00_General\2016_10_04_jpryobak.rvt



1
A201 FLOOR PLAN
1/8" = 1'-0"

GENERAL FLOOR PLAN NOTES

- A. FOR PARTITION TYPES AND OPENING SCHEDULES, SEE SHEET A901 AND A902.
- B. ALL DIMENSIONS AT WALLS & PARTITIONS ARE TAKEN FROM FACE OF STUD, UNLESS OTHERWISE NOTED. ALL DIMENSIONS AT COLUMNS ARE TAKEN FROM THE CENTERLINE OF THE COLUMN UNLESS OTHERWISE NOTED. ALL DIMENSIONS TO MASONRY ARE TAKEN FROM FACE OF MASONRY UNIT UNLESS OTHERWISE NOTED.
- C. ALL DIMENSIONS INDICATED AS "CLEAR", "HOLD" OR "MINIMUM (MIN.)" ARE TAKEN FROM THE FINISH SURFACE. VERIFY DIMENSIONS DURING LAYOUT AND NOTIFY ARCHITECT OF ANY DISCREPANCIES PRIOR TO PROCEEDING.
- D. "ALIGN" SHALL MEAN TO ACCURATELY LOCATE FINISH FACES IN THE SAME PLANE.
- E. LOCATE ALL DOORS 4" FROM BACK OF FRAME (HINGE SIDE) TO END OF PARTITION UNLESS OTHERWISE NOTED.
- F. MAINTAIN A MINIMUM OF 18" AT PULL SIDE OF ALL DOORS.
- G. PROVIDE SOLID BLOCKING BETWEEN STUDS AT ALL LOCATIONS TO RECEIVE MILLWORK, GRAB BARS OR OTHER ITEMS REQUIRING ATTACHMENT TO THE WALL OR PARTITION.
- H. SEE INTERIOR ELEVATIONS FOR TOILET ACCESSORY LOCATIONS.
- I. ALL WORK NOTED "BY OTHERS" OR "N.I.C." SHALL BE PROVIDED BY OWNER OR UNDER SEPARATE CONTRACT. INCLUDE REQUIREMENTS FOR THIS WORK IN CONSTRUCTION SCHEDULE AND COORDINATE AS REQ. TO ASSURE ORDERLY SEQUENCE OF INSTALLATION.
- J. SEE SITE PLAN, LANDSCAPE AND CIVIL DRAWINGS FOR DETAILED SITE INFORMATION (ALL WORK OUTSIDE OF BUILDING LINE).
- K. CLEARANCES AND TOLERANCES OF ALL WALLS ADJACENT TO OR ABOUNDING EQUIPMENT SHALL BE VERIFIED BY EQUIPMENT VENDORS PRIOR TO LAYOUT.

FLOOR PLAN KEY NOTES

- 1 CONCRETE POOL DECK
- 2 THREE LANE RECREATION SWIMMING POOL
- 3 STEPPED POOL ENTRY
- 4 EXTERIOR PATIO W/ ROOF OVERHANG
- 5 PERIMETER DRAIN AT POOL DECK EDGE
- 6 ADA RAMP AND HANDRAILS AT POOL
- 7 RECEPTION DESK
- 8 LOCKERS
- 9 POURED CONCRETE COLUMN PEDESTAL
- 10 BRICK VENEER OVER CMU WALL
- 11 GLAZED ALUMINUM CURTAIN WALL
- 12 OUTLINE OF CANOPY (ABOVE)
- 13 POOL SLIDE AND STAIR
- 14 COUNTER FOR HAIR DRYERS
- 15 ADA ROLL-IN SHOWER
- 16 3' X 3' WALK-IN SHOWER
- 17 ADA WALL MOUNTED WATER COOLER
- 18 STEEL TUBE COLUMN
- 19 MECHANICAL EQUIPMENT AT CONDENSER YARD
- 20 POOL EQUIPMENT
- 21 FIRE EXTINGUISHER CABINET
- 22 ROLL AWAY BLEACHERS
- 23 WALL MOUNTED SHOWER HEAD AND CONTROLS
- 24 FLOOR DRAIN
- 25 COMBINATION DRENCH SHOWER & EYE/FACE WASH UNIT, PVC

SIZELER THOMPSON BROWN ARCHITECTS
REGIONAL DESIGN
 300 LAFAYETTE STREET, SUITE 200
 NEW ORLEANS, LOUISIANA 70130
 (504) 523-6472 FAX (504) 529-1181

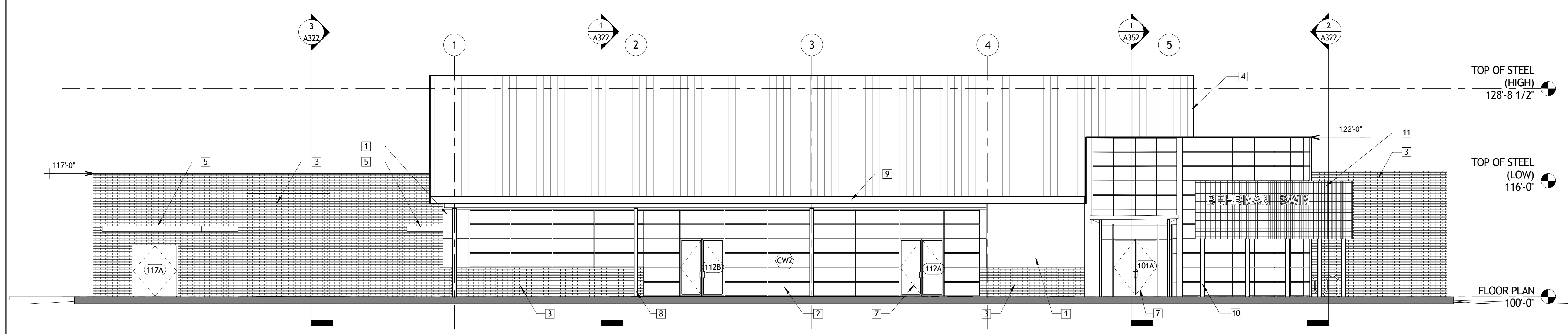
Revisions		
No.	Description	Date

BEHRMAN PARK NATATORIUM
 2529 General Meyer Ave.
 New Orleans, LA 70114
1ST FLOOR PLAN NOT FOR CONSTRUCTION

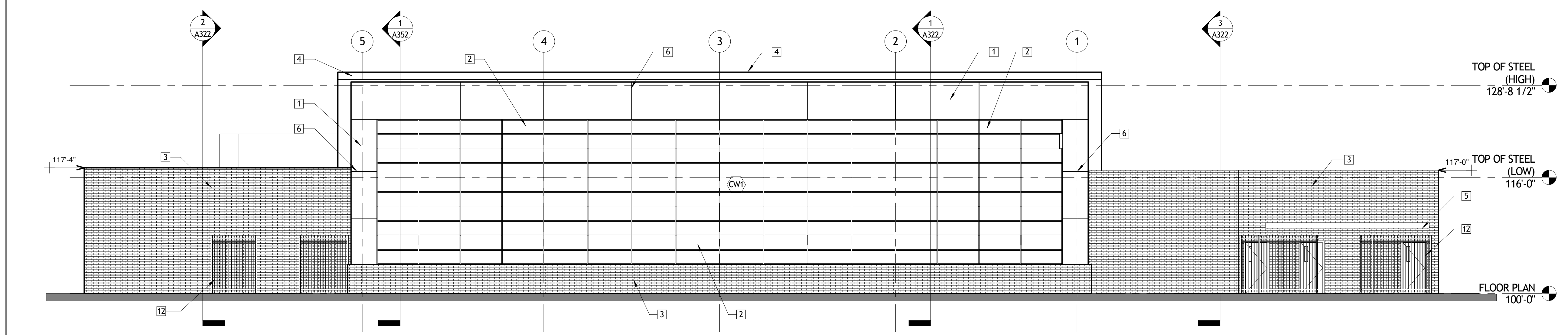
seal	project number 21208.00	drawing number A201
	date 10.18.2016	
	phase 100% DD SUBMITTAL	

ELEVATION KEYNOTES

- 1 METAL WALL PANEL ON REINFORCED CMU
- 2 GLAZED ALUMINUM CURTAIN WALL
- 3 BRICK VENEER ON CMU
- 4 STANDING SEAM METAL ROOF
- 5 ALUMINUM CANOPY
- 6 WALL REVEAL
- 7 GLAZED ALUMINUM CURTAIN WALL SLIDING DOORS
- 8 STEEL TUBE COLUMN W/ ATTACHED DOWNSPOUT
- 9 CONTINUOUS ALUMINUM GUTTER
- 10 STEEL TUBE COLUMN, PAINT W/ HIGH PERFORMANCE COATING
- 11 PERFORATED SUN SCREEN W/ RAISED LETTERS
- 12 SECURITY FENCE W/ LOCKABLE GATE



2 SOUTH ELEVATION
A300 1/8" = 1'-0"



1 NORTH ELEVATION
A300 1/8" = 1'-0"

NOT FOR CONSTRUCTION

SIZELER THOMPSON BROWN ARCHITECTS
REGIONAL DESIGN
 300 LAFAYETTE STREET, SUITE 200
 NEW ORLEANS, LOUISIANA 70130
 (504) 523-6472 FAX (504) 529-1181

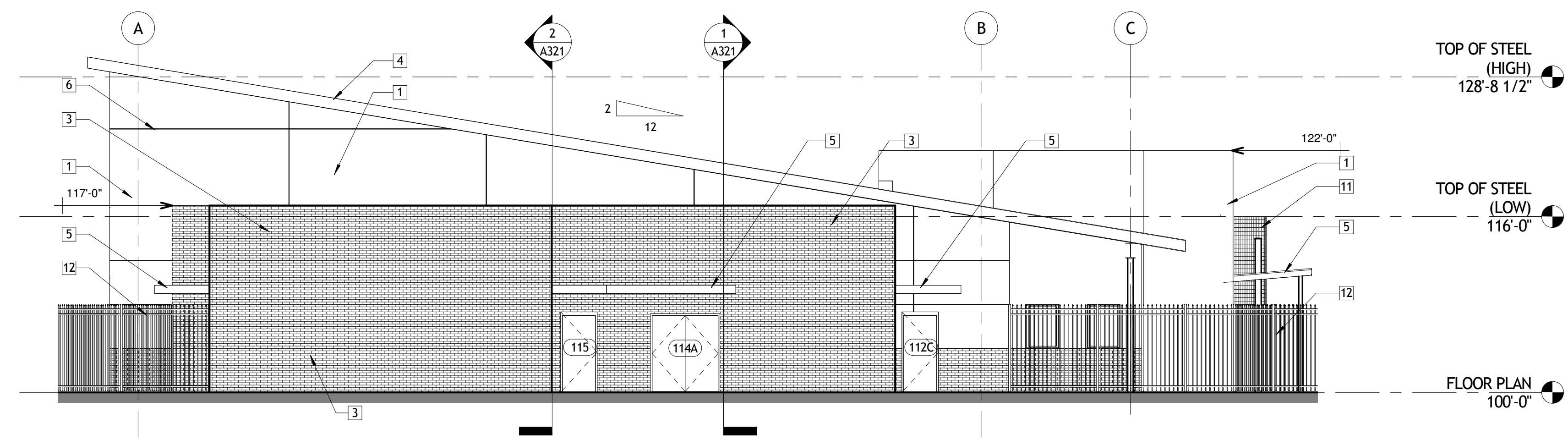
Revisions		
No.	Description	Date

BEHRMAN PARK NATATORIUM
 2529 General Meyer Ave.
 New Orleans, LA 70114

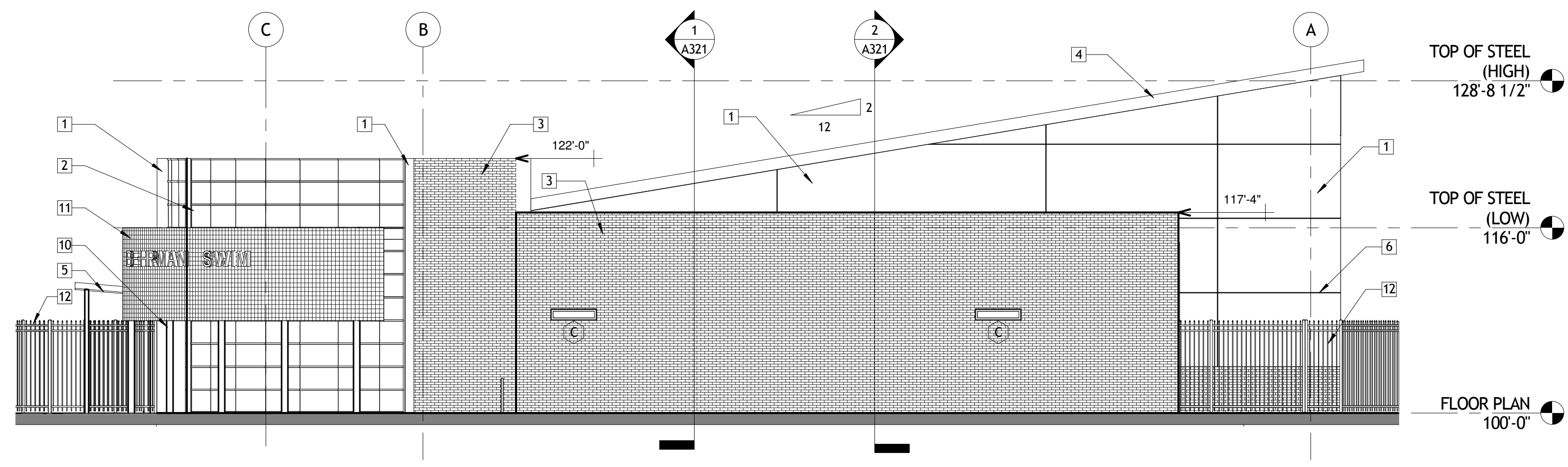
EXTERIOR ELEVATIONS		drawing number
seal	project number 21208.00	A300
	date 10.18.2016	
	phase 100% DD SUBMITTAL	

ELEVATION KEYNOTES

- 1 METAL WALL PANEL ON REINFORCED CMU
- 2 GLAZED ALUMINUM CURTAIN WALL
- 3 BRICK VENEER ON CMU
- 4 STANDING SEAM METAL ROOF
- 5 ALUMINUM CANOPY
- 6 WALL REVEAL
- 7 GLAZED ALUMINUM CURTAIN WALL SLIDING DOORS
- 8 STEEL TUBE COLUMN W/ ATTACHED DOWNSPOUT
- 9 CONTINUOUS ALUMINUM GUTTER
- 10 STEEL TUBE COLUMN, PAINT W/ HIGH PERFORMANCE COATING
- 11 PERFORATED SUN SCREEN W/ RAISED LETTERS
- 12 SECURITY FENCE W/ LOCKABLE GATE



2 WEST ELEVATION
A301 1/8" = 1'-0"



1 EAST ELEVATION
A301 1/8" = 1'-0"

NOT FOR CONSTRUCTION

SIZELER THOMPSON BROWN ARCHITECTS
REGIONAL DESIGN
 300 LAFAYETTE STREET, SUITE 200
 NEW ORLEANS, LOUISIANA 70130
 (504) 523-6472 FAX (504) 529-1181

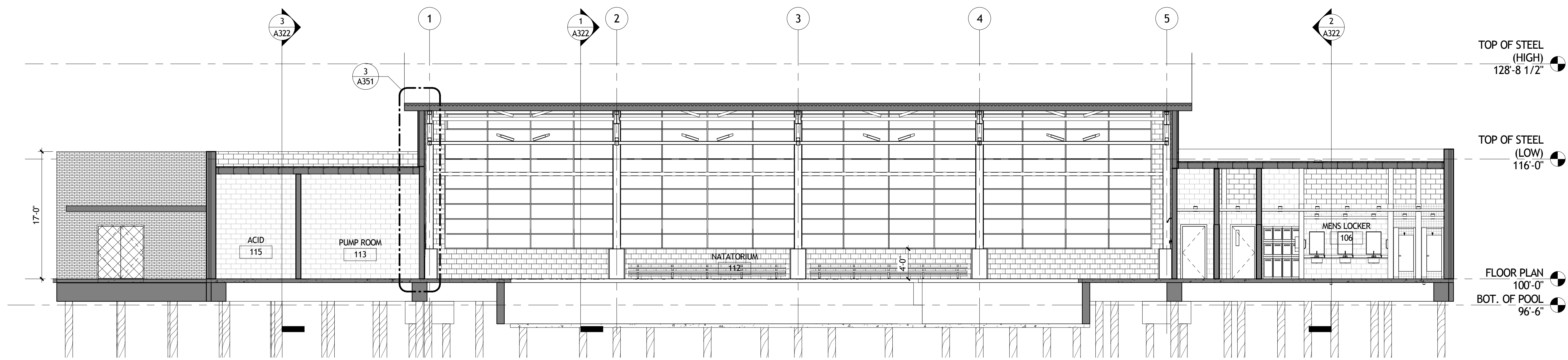
Revisions		
No.	Description	Date

BEHRMAN PARK NATATORIUM

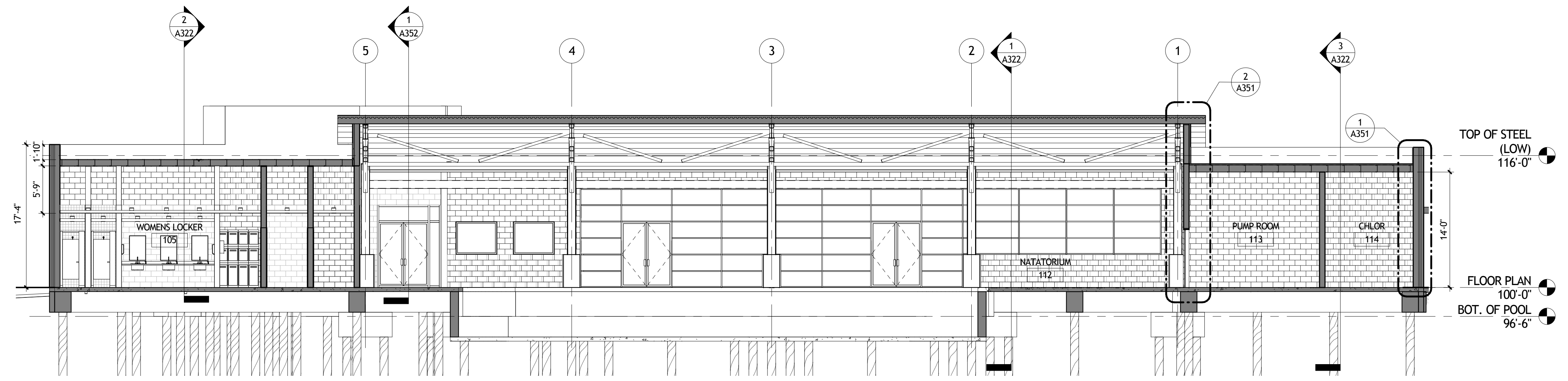
2529 General Meyer Ave.
New Orleans, LA 70114

EXTERIOR ELEVATIONS

seal	project number 21208.00	drawing number A301
	date 10.18.2016	
	phase 100% DD SUBMITTAL	



2 BUILDING SECTION 3
A321 1/8" = 1'-0"



1 BUILDING SECTION 2
A321 1/8" = 1'-0"

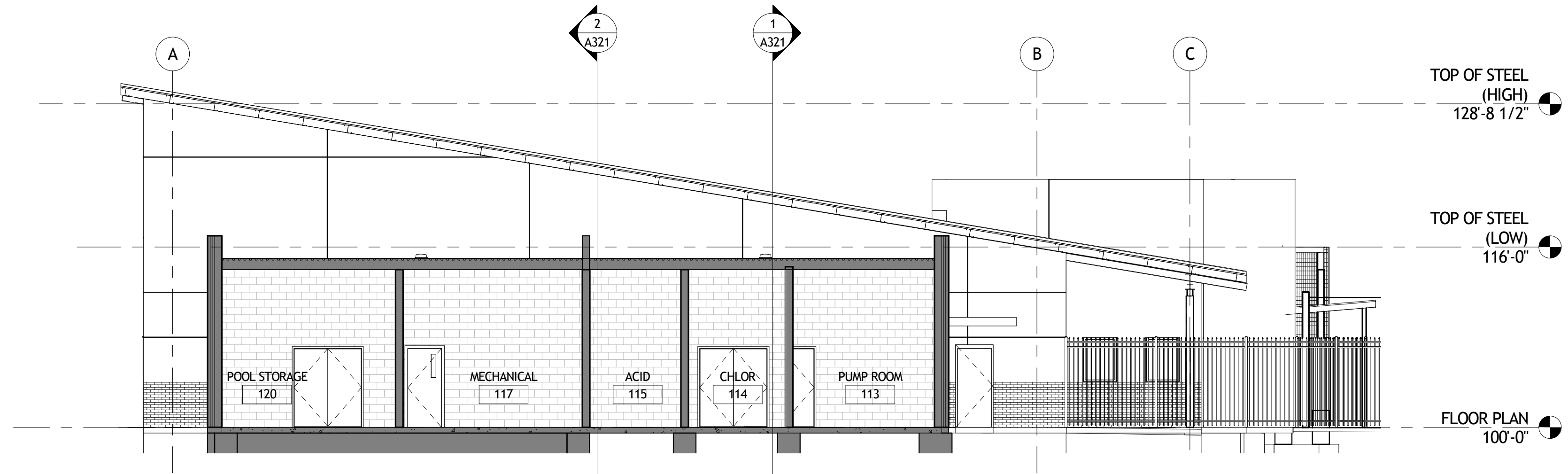
NOT FOR CONSTRUCTION

SIZELER THOMPSON BROWN ARCHITECTS
REGIONAL DESIGN
300 LAFAYETTE STREET, SUITE 200
NEW ORLEANS, LOUISIANA 70130
(504) 523-6472 FAX (504) 529-1181

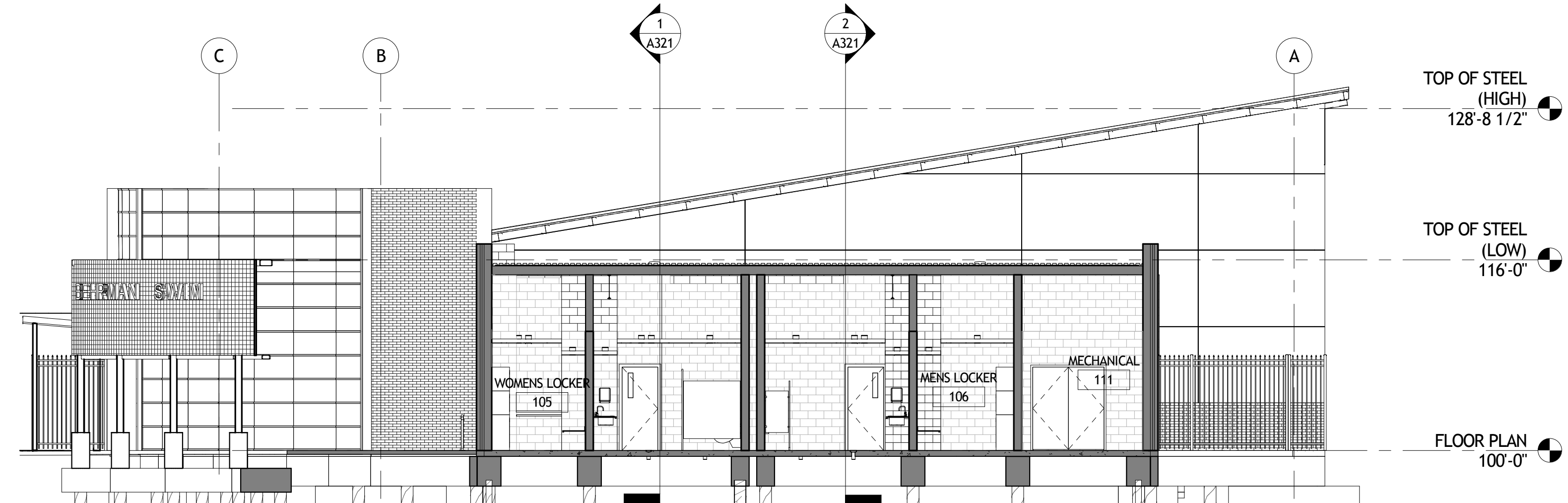
Revisions		
No.	Description	Date

BEHRMAN PARK NATATORIUM
2529 General Meyer Ave.
New Orleans, LA 70114

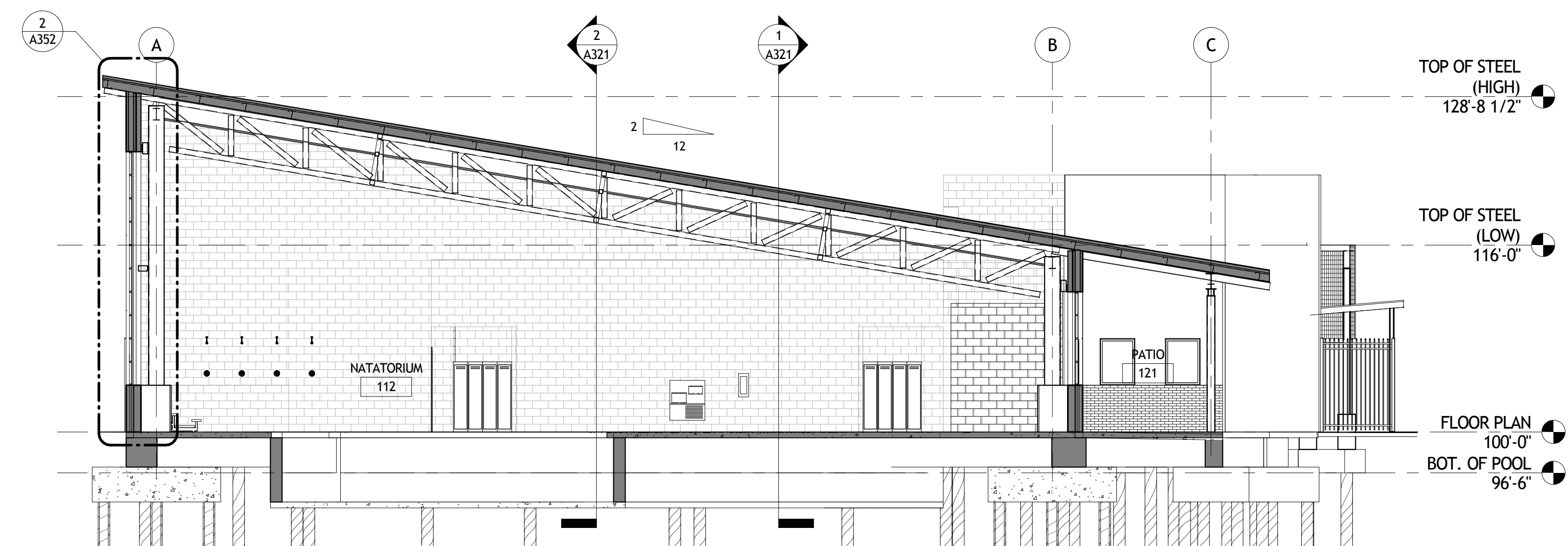
BUILDING SECTIONS		drawing number
project number	21208.00	A321
date	10.18.2016	
phase	100% DD SUBMITTAL	
seal		



3 BUILDING SECTION 6
A322 1/8" = 1'-0"



2 BUILDING SECTION 5
A322 1/8" = 1'-0"



1 BUILDING SECTION 4
A322 1/8" = 1'-0"

NOT FOR CONSTRUCTION

SIZELER THOMPSON BROWN ARCHITECTS
REGIONAL DESIGN
300 LAFAYETTE STREET, SUITE 200
NEW ORLEANS, LOUISIANA 70130
(504) 523-6472 FAX (504) 529-1181

Revisions		
No.	Description	Date

BEHRMAN PARK NATATORIUM

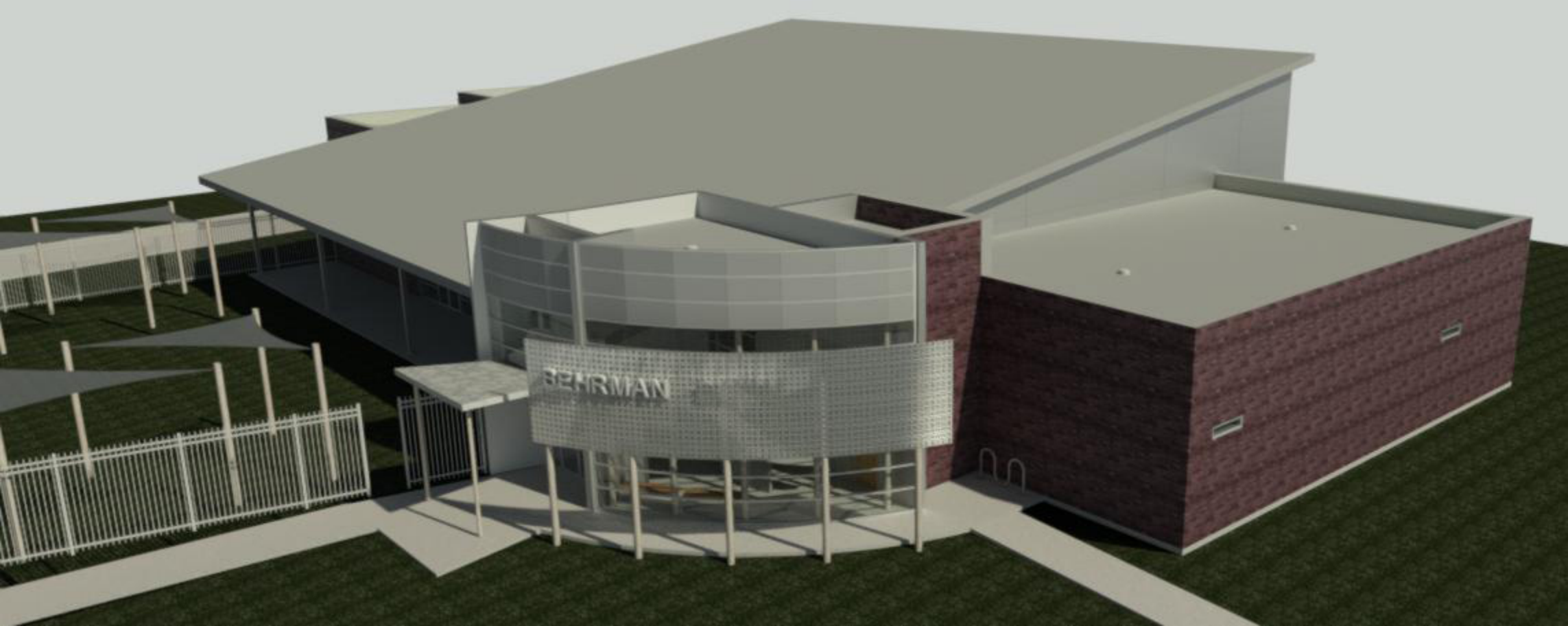
2529 General Meyer Ave.
New Orleans, LA 70114

BUILDING SECTIONS

seal	project number	21208.00	drawing number A322
	date	10.18.2016	
	phase	100% DD SUBMITTAL	



BEHRMAN



BEHRMAN





