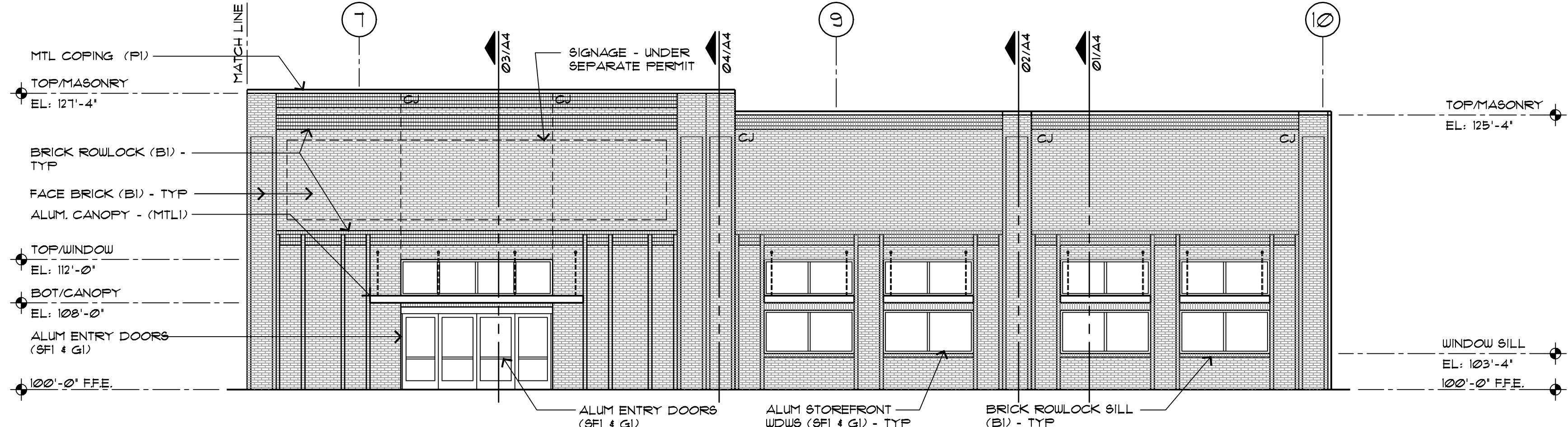


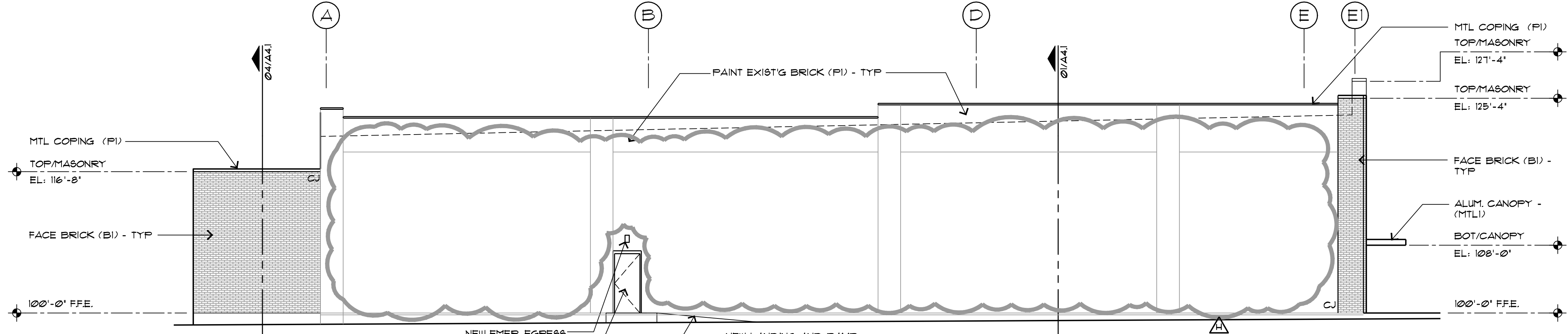
01 WEST ELEVATION

SCALE: 1/8" = 1'-0"



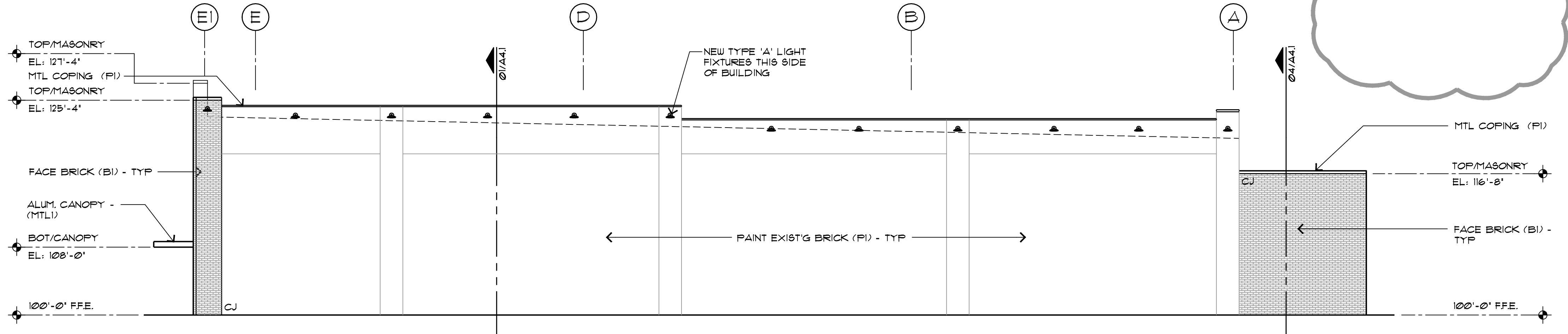
02 WEST ELEVATION

SCALE: 1/8" = 1'-0"



03 NORTH ELEVATION

SCALE: 1/8" = 1'-0"



04 SOUTH ELEVATION

SCALE: 1/8" = 1'-0"

GENESIS DESIGN GROUP, INC.
 421 W. Harwood, Ste 100
 Hurst, Texas 76054-2938
 phone (817) 285-7444
 fax (817) 285-7318
 www.genesisarchitects.com

**A BUILDING SHELL FOR
 FIRST HARTFORD
 REALTY CORPORATION**
 550 & 560 N. CARROLLTON AVE
 NEW ORLEANS, LA

**EXTERIOR
 ELEVATIONS**

09-08-2016

A2

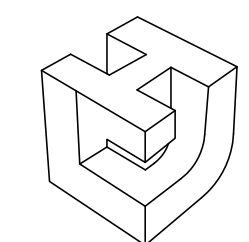
REVISIONS: 'A' - PRELIM. ISSUE TO PETCO - 06/24/15 'C' - REVISED PER CITY COMMENTS - 01/04/16 'F' - REVISED PER OWNER CHANGES - 04/19/16
 'B' - ISSUE TO PERMIT - 10/29/15 'E' - REVISED PER OWNER CHANGES - 02/25/16 'H' - REVISED PER OWNER CHANGES - 04/02/16



13,600-SQFT
REAR DRIVE-THRU

STORE NUMBER: 10594
SEC N. CARROLLTON AVE.
& TOULOUSE ST.
NEW ORLEANS, LA

PROJECT TYPE: NEW BUILDING
DEAL TYPE: TURN KEY
CS PROJECT NUMBER: 079427

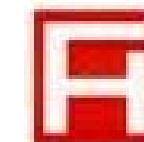


LINFIELD, HUNTER & JUNIUS, INC.
PROFESSIONAL ENGINEERS, ARCHITECTS
& SURVEYORS
3608 18th Street, Suite 200
Metairie, Louisiana 70002

© 2011 by Linfield, Hunter & Junius, Inc.

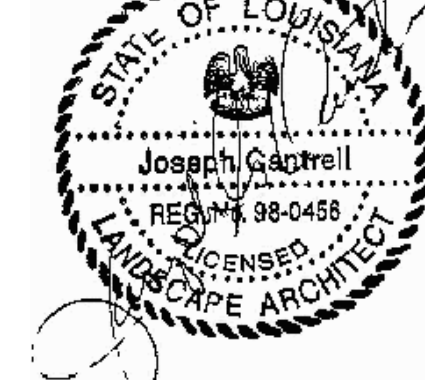
CONSULTANT:

DEVELOPER:



FIRST HARTFORD REALTY CORP.
149 COLONIAL RD.
MANCHESTER, CT 06045
TEL: (860) 646-6555

SEAL:



REVISIONS:

- 1) 5-7-15 GENERAL REVISIONS
- 2) 7-21-15 CITY COMMENTS
- 3) 10-12-15 CITY COMMENTS
- 4) 11-25-15 CITY COMMENTS
- 5) 2-15-16 CITY COMMENTS
- 6) 2-19-16 CITY COMMENTS
- 7) 9-7-16 LANDSCAPE/IRRIGATION REVISION

DRAWING BY: LHJ

DATE: 5/7/15

JOB NUMBER: 11-31RR

TITLE:
PARTIAL LANDSCAPE PLAN

SHEET NUMBER:

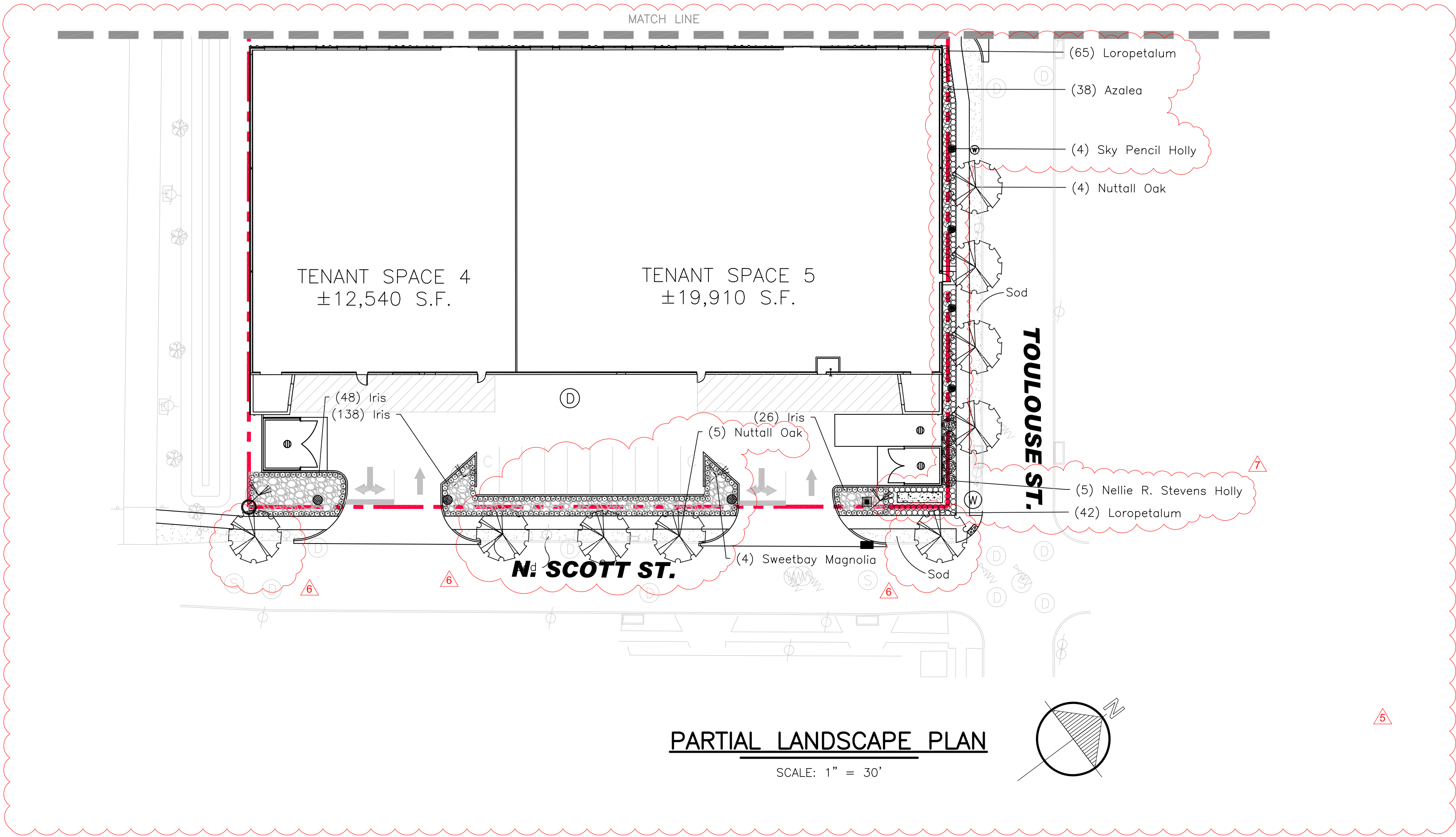
L3

COMMENTS:
NOT RELEASED FOR CONSTRUCTION

Overall Plant Schedule

Quantity	Symbol	Scientific Name	Common Name	Planting Size
91	☉	Camellia japonica 'Shi Shi Gashira'	Shi Shi Camellia	7-Gal., 24" Min. Ht.
8	☉	Ilex x attenuata 'Savannah'	Savannah Holly	30-Gal., 2" Min. Cal., 10' Min. Ht.
73	☉	Ilex cornuta 'Carissa'	Carissa Holly	3-Gal., 12" Min. Ht.
543	☉	Iris Louisiana*	Iris Louisiana	1-Gal., 12" Min. Ht., Blue or Purple Flower (Space 24" O.C.)
126	☉	Juniperus chinense 'Parsonii'	Parsonii Juniper	3-Gal., 12" Min. Spread
5	☉	Lagerstroemia indica 'Natchez'	Natchez Crape Myrtle	45-Gal., 2-1/2" Min. Cal., 10" Min. Ht., Std. Trunk
11	☉	Loropetalum chinensis	Tree Form Loropetalum	B&B, 6' Min. Ht.
460	☉	Loropetalum chinense 'Purple Pixie'	Purple Pixie Loropetalum	1-Gal.
28	☉	Magnolia virginiana	Sweetbay Magnolia	30-Gal., 2" Min. Cal., 8' Min. Ht.
68	☉	Muhlenbergia capillaris	Gulf Coast Muhly Grass	3-Gal., 18" Min. Ht.
17	☉	Quercus nuttalli	Nuttall Oak	65-Gal., 3" Min. Cal., 14' Min. Ht.
2	☉	Quercus virginiana	Southern Live Oak	300-Gal., 7" Min. Cal., 22' Min. Ht., 22' Min. Sprd., 5' Min Fork H
101	☉	Rhododendron x 'Fashion'	Fashion Azalea	3-Gal., 12" Min. Ht.
8	☉	Ulmus parvifolia	Chinese Elm	65-Gal., 3" Min. Cal., 12' Min. Ht.
5	☉	Ilex x 'Nellie R. Stevens'	Nellie R. Stevens Holly	30-Gal., 6'-7' Min. Ht., Full
4	☉	Ilex crenata 'Sky Pencil'	Sky Pencil Japanese Holly	15-Gal., 3'-4' Min. Ht.
+/- 1,150 SY		Cynodon dactylon 'Tifway 419'	Class 'A' Tifway 419 Bermuda Sod	Squares
+/- 160 LF		-	Green Steel Edge	LF
+/- 400 SY		-	River Rock (1"-2" Stone Size)	SY, 3" Thick, Install Over Geotextile Fabric
+/- 140 SY		-	Aged Pine Bark Mulch	SY, Mulch Calculation in Addition to Mulch Needed for Beds

1. HAND WATER ALL TREES AND TURF IN THE R.O.W, AS NEEDED, FOR A MINIMUM PERIOD OF 60 CALENDAR DAYS AFTER FINAL ACCEPTANCE.
2. SEE BELOW FOR MAINTENANCE OF INSTALLED LIVE OAK TREES. LIVE OAK TREE MAINTENANCE IS IN ADDITION TO HAND WATERING.
3. ALL CONTRACTORS MUST FOLLOW THE CITY OF NEW ORLEANS DEPARTMENT OF PARKS AND PARKWAYS SPECIFICATIONS SECTION 02480 LANDSCAPE PROTECTION DURING CONSTRUCTION AND SECTION 02481 INSTALLATION OF PLANT MATERIALS FOR ALL LANDSCAPE ON PUBLIC PROPERTY. SEE SHEET L-5 - L-9 FOR LANDSCAPE DETAILS AND SPECS ON PUBLIC PROPERTY.
4. ALL PLANTED RIGHT OF WAY TREES SHALL BE PRUNED FOR SEVEN (7) FOOT OF CLEAR TRUNK OVER SIDEWALK.
* CONTRACTOR TO PRESENT IRIS VARIETIES TO OWNER FOR APPROVAL.



PARTIAL LANDSCAPE PLAN

SCALE: 1" = 30'



FIRST HARTFORD
REALTY CORPORATION





FIRST HARTFORD
REALTY CORPORATION





FIRST HARTFORD
REALTY CORPORATION





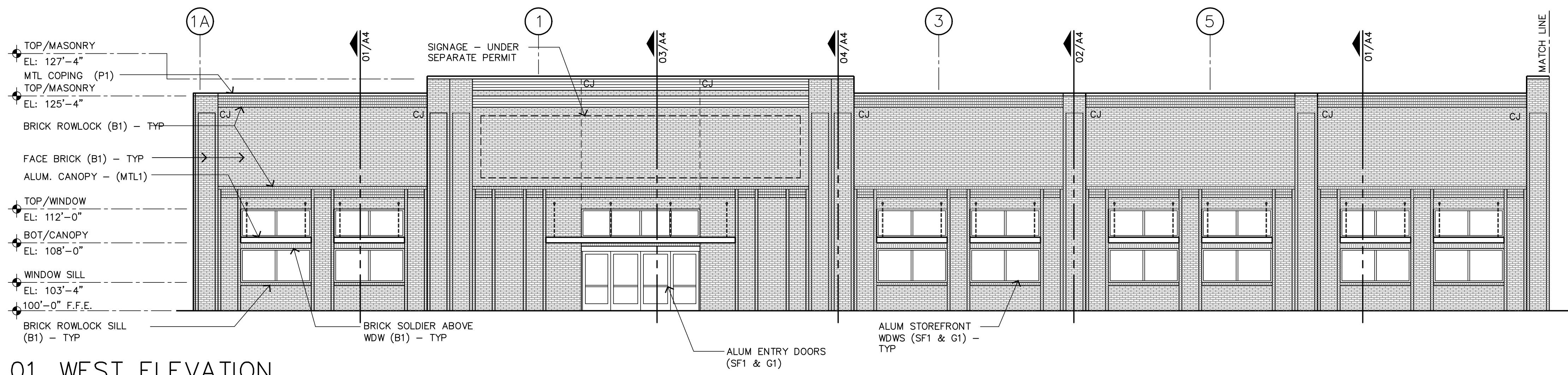






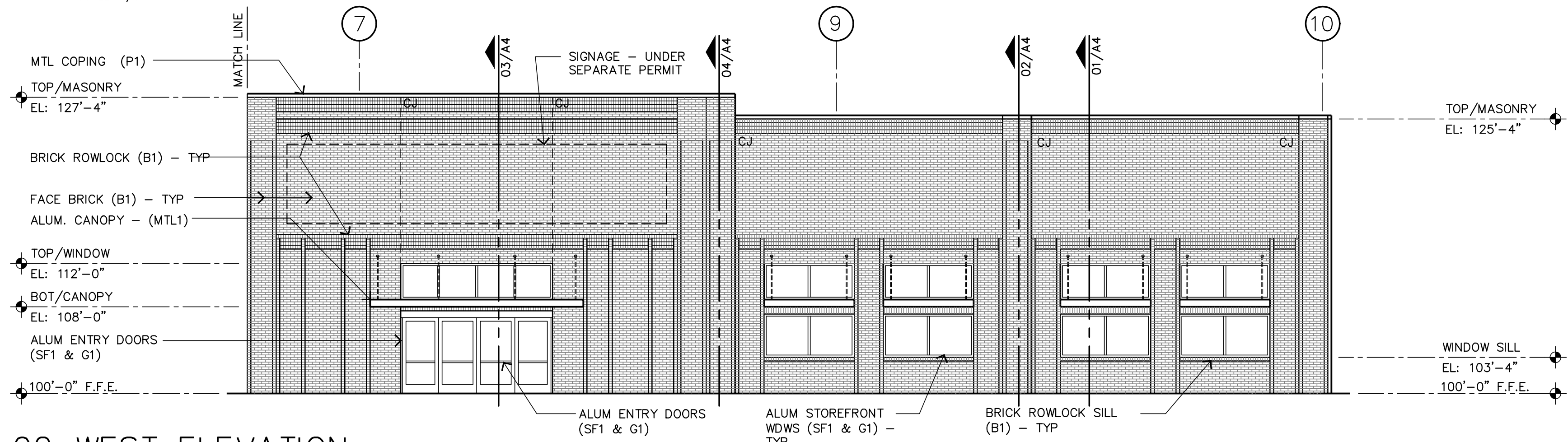






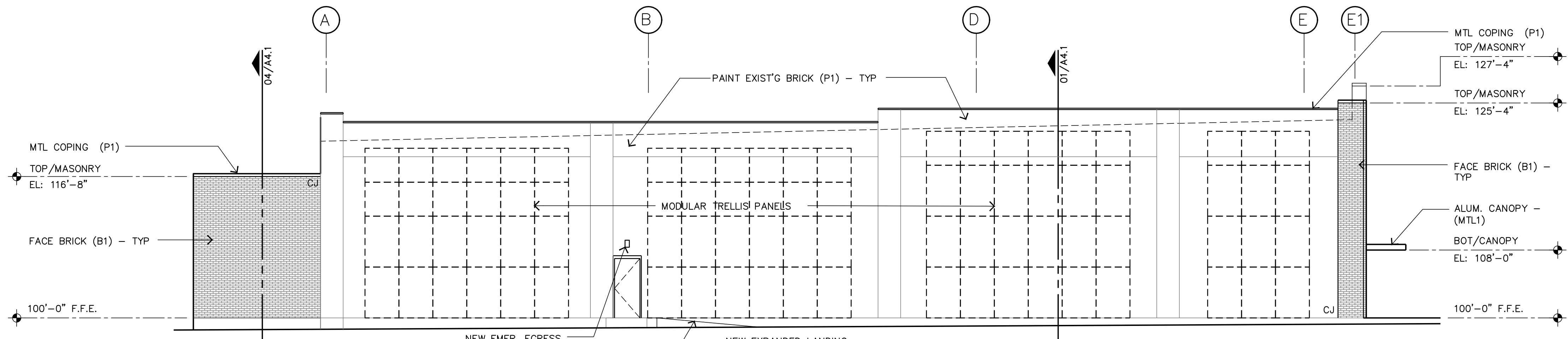
01 WEST ELEVATION

SCALE: 1/8" = 1'-0"



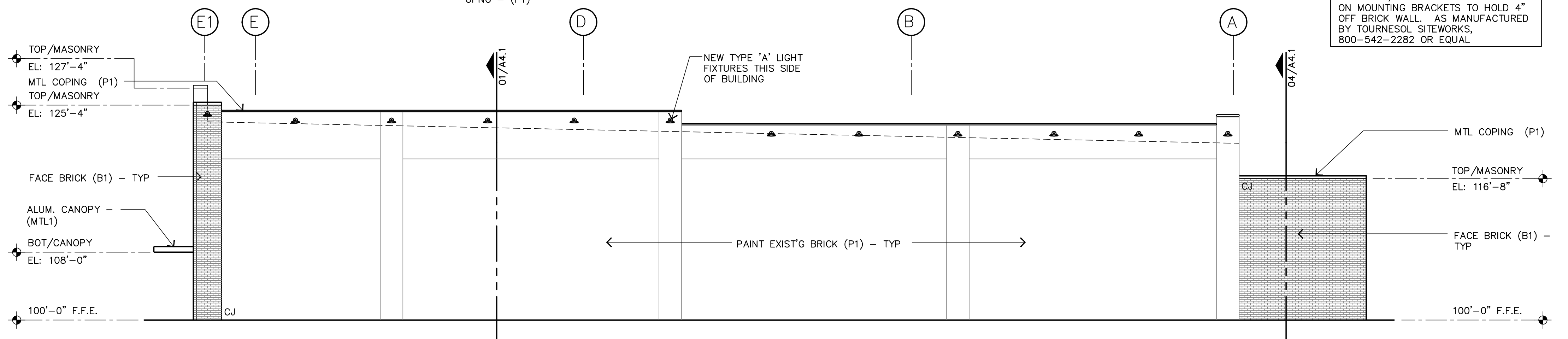
02 WEST ELEVATION

SCALE: 1/8" = 1'-0"



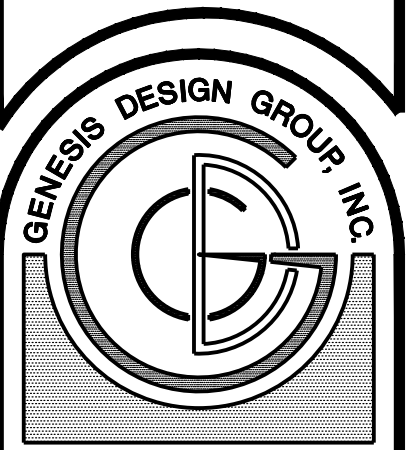
03 NORTH ELEVATION

SCALE: 1/8" = 1'-0"



04 SOUTH ELEVATION

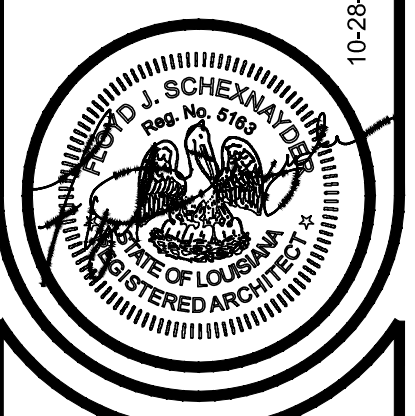
SCALE: 1/8" = 1'-0"



421 W. Harwood, Ste 100
Hurst, Texas 76054-2938
phone (817) 285-7444
fax (817) 285-7318
www.genesisarchitects.com

A BUILDING SHELL FOR
**FIRST HARTFORD
REALTY CORPORATION**
550 & 560 N. CARROLLTON AVE
NEW ORLEANS, LA

**EXTERIOR
ELEVATIONS**



A2

15-032

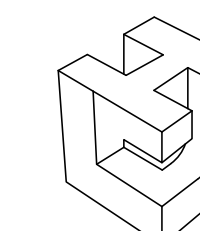
REVISIONS: 'A' - PRELIM. ISSUE TO PETCO - 06/24/15
'B' - ISSUE TO PERMIT - 10/28/15

10-28-2015



13,600-RIGHT
 REAR DRIVE-THRU
 STORE NUMBER: 10594
 SEC N. CARROLLTON AVE.
 & TOULOUSE ST.
 NEW ORLEANS, LA

PROJECT TYPE: NEW BUILDING
 DEAL TYPE: TURN KEY
 CS PROJECT NUMBER: 079427

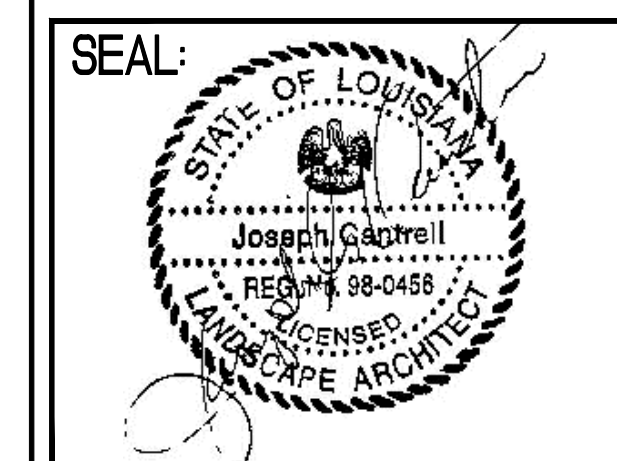


LINFIELD, HUNTER & JUNIUS, INC.
 PROFESSIONAL ENGINEERS, ARCHITECTS
 AND SURVEYORS
 3408 18th Street, Suite 200
 Metairie, Louisiana 70002
 © 2011 by Linfield, Hunter & Junius, Inc.

CONSULTANT:

DEVELOPER:

 FIRST HARTFORD REALTY CORP.
 149 COLONIAL RD.
 MANCHESTER, CT 06045
 TEL: (860) 646-6555



REVISIONS:
 1) 5-7-15 GENERAL REVISIONS
 2) 7-21-15 CITY COMMENTS
 3) 10-12-15 CITY COMMENTS

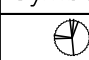




DRAWING BY: LHJ
 DATE: 5/7/15
 JOB NUMBER: 11-31RR

TITLE:
 PARTIAL LANDSCAPE PLAN

SHEET NUMBER:
L3

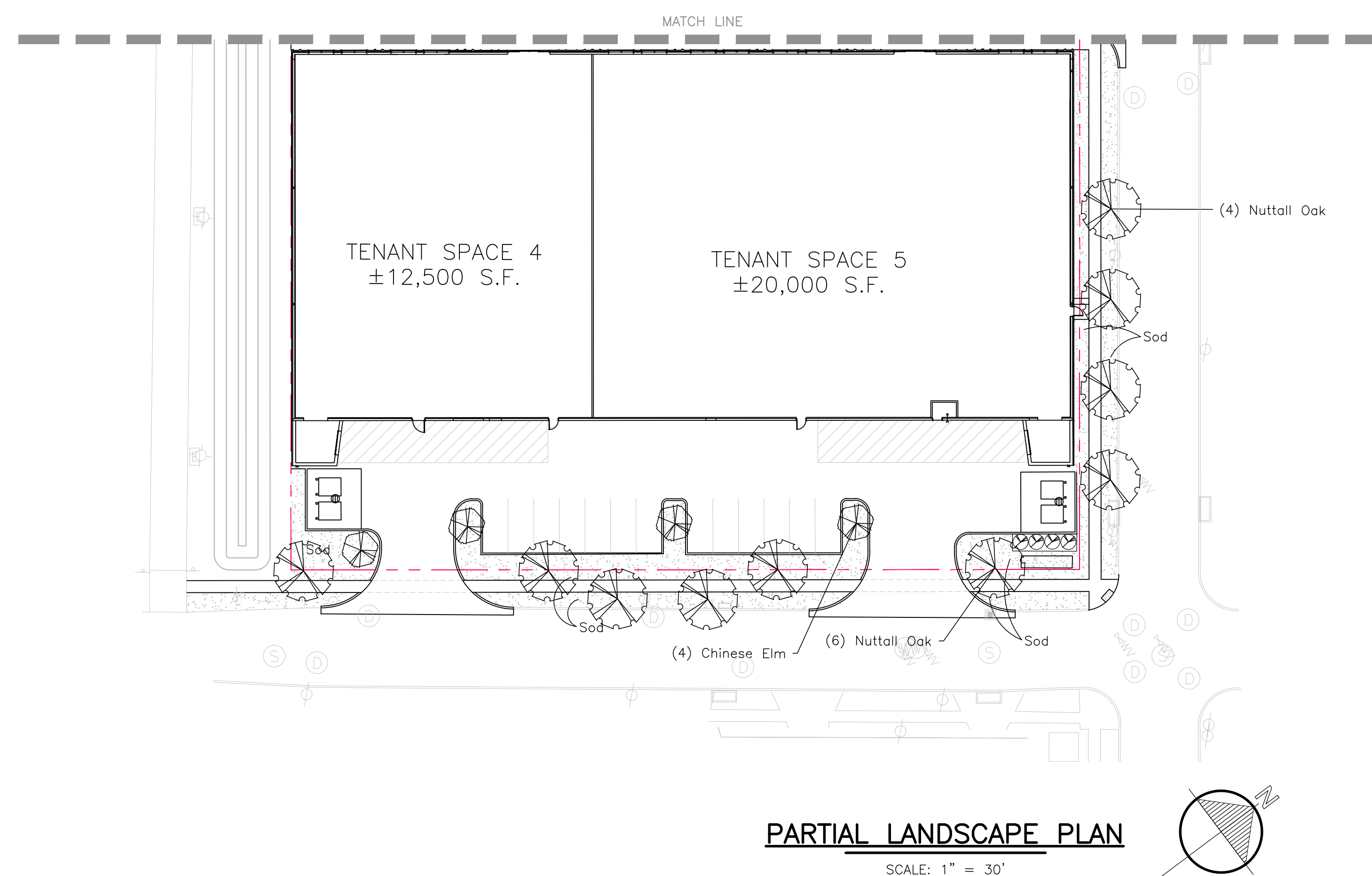
COMMENTS:
 NOT RELEASED FOR CONSTRUCTION

L-3 Plant Schedule

Quantity	Symbol	Scientific Name	Common Name	Planting Size
4		Ilex x 'Nellie R. Stevens'	Nellie R. Stevens Holly	30-Gal., 6'-7' Min. Ht., Full
10		Quercus nuttallii	Nuttall Oak	65-Gal., 3" Min. Cal., 14' Min. Ht.
4		Ulmus parvifolia	Chinese Elm	65-Gal., 3" Min. Cal., 12' Min. Ht.
+/-150 SY		Cynodon dactylon 'Tifway 419'	Class 'A' Tifway 419 Bermuda Sod	Squares
+/- 35 LF		-	Green Steel Edge	LF

- HAND WATER ALL TREES AND TURF IN THE R.O.W. AS NEEDED, FOR A MINIMUM PERIOD OF 60 CALENDAR DAYS AFTER FINAL ACCEPTANCE.
- ALL CONTRACTORS MUST FOLLOW THE CITY OF NEW ORLEANS DEPARTMENT OF PARKS AND RECREATION SECTION 02480 LANDSCAPE PROTECTION DURING CONSTRUCTION AND SECTION 02481 INSTALLATION OF PLANT MATERIALS FOR ALL LANDSCAPE ON PUBLIC PROPERTY. SEE SHEET L-5 - L-9 FOR LANDSCAPE DETAILS AND SPECS ON PUBLIC PROPERTY.
- ALL PLANTED RIGHT OF WAY TREES SHALL BE PRUNED FOR SEVEN (7) FOOT OF CLEAR TRUNK OVER SIDEWALK.

PARKWAYS REQUIRES ONE YEAR OF WATERING AND MAINTENANCE FOR PUBLIC TREES



AS NOTED

APPROVED
 Public Landscape Plan
 Date: 12OCT2015
 By: 
 Dept. of Parks & Parkways