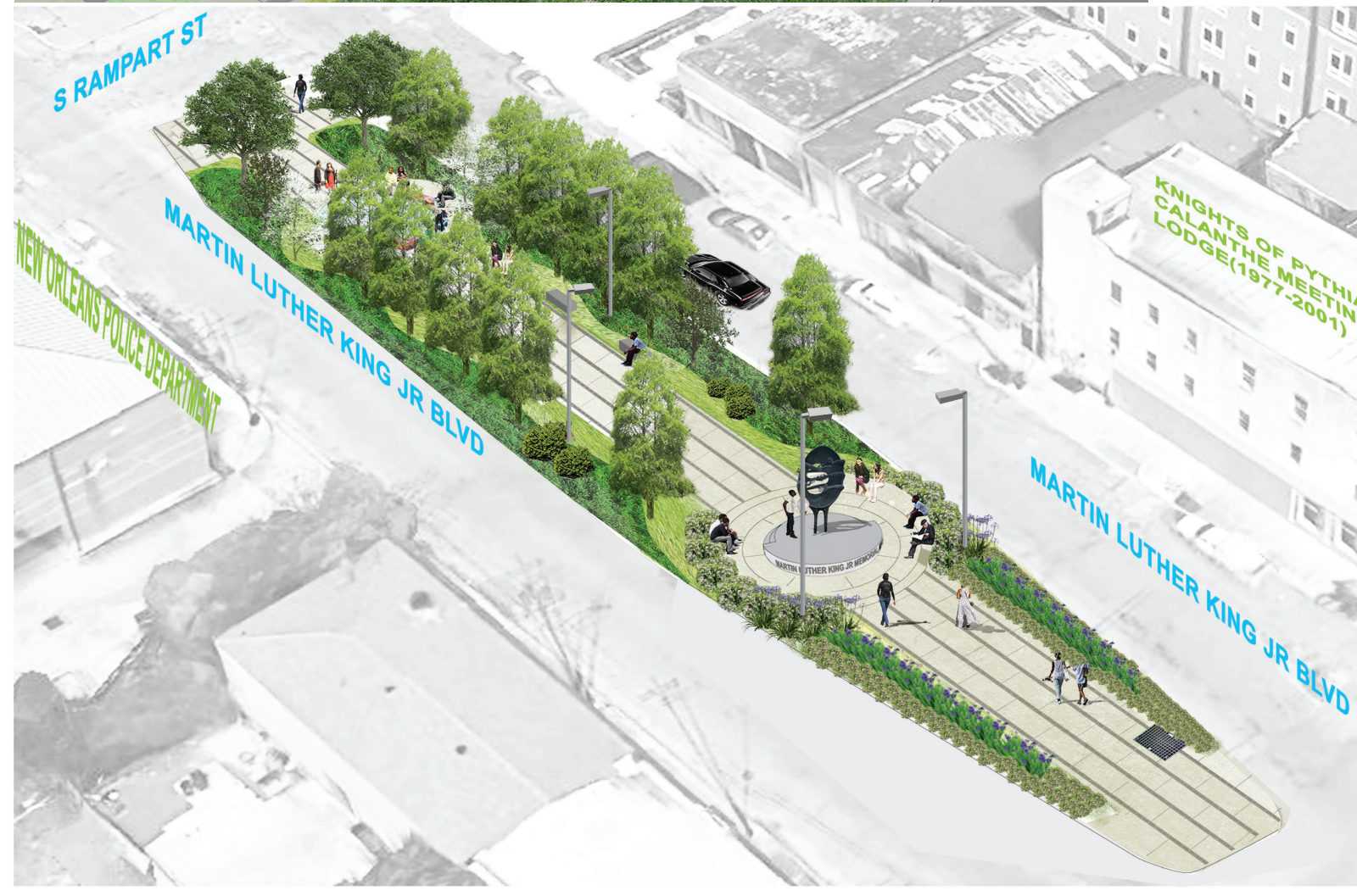






PHASE 2

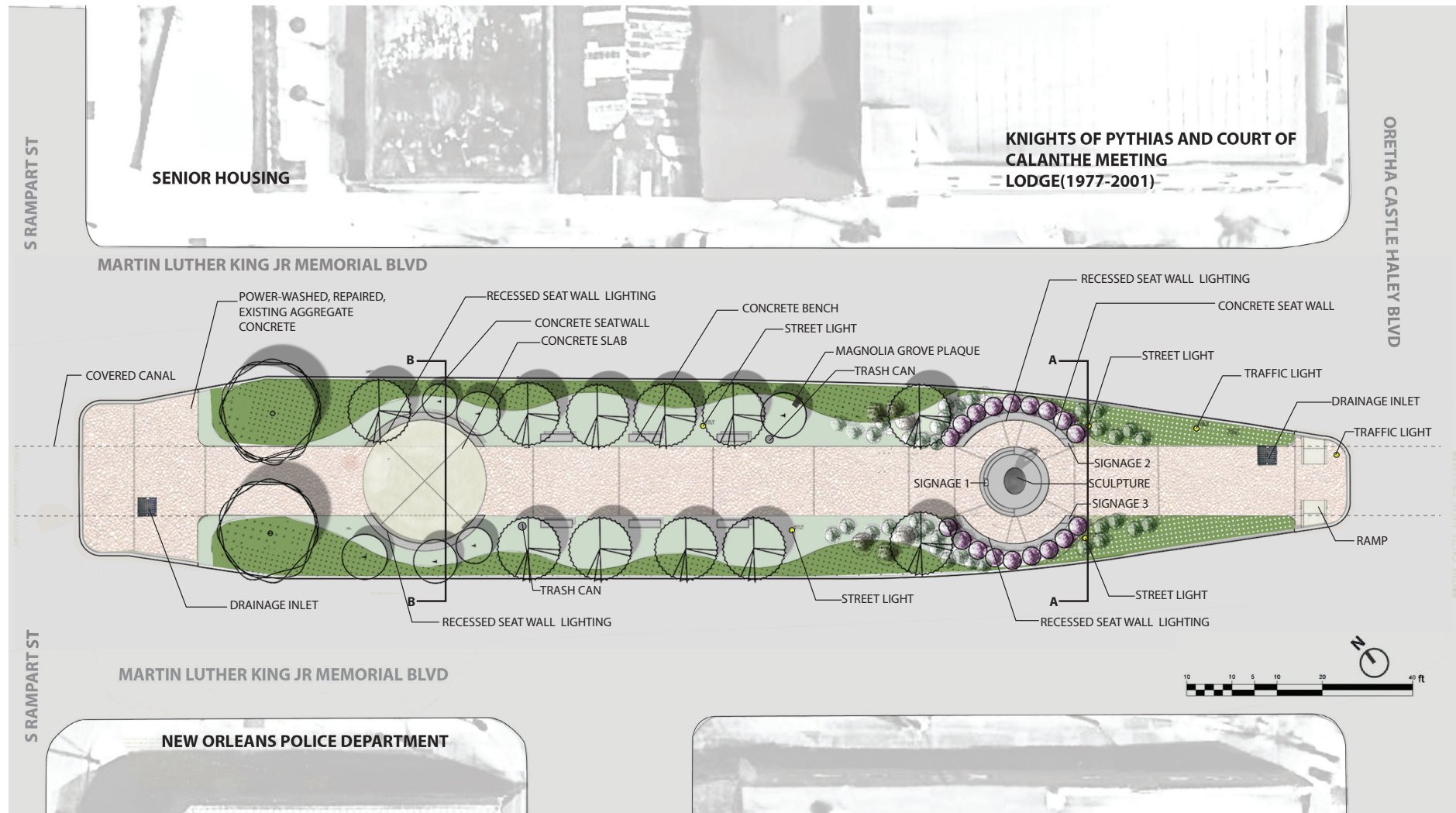


# MARTIN LUTHER KING JR. MEMORIAL WALK (HAYDEN PLAZA)

Client:  
Oretha Castle Haley Boulevard Merchants & Business Association  
Date:  
2016-present  
Location:  
New Orleans, Louisiana

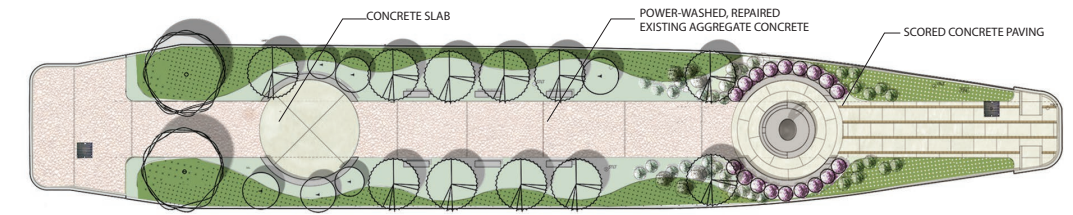
Redesign of plaza located on Martin Luther King Boulevard at the intersection of Oretha Castle Haley Boulevard. The design calls for the restoration of the existing sculpture design by Frank Hayden, and the re-installation of the sculpture on site on a new pedestal. New seating, lighting and landscape planting feature will also be included. This site has historical significance and was dedicated as memorial to Doctor King.

# SITE PLAN

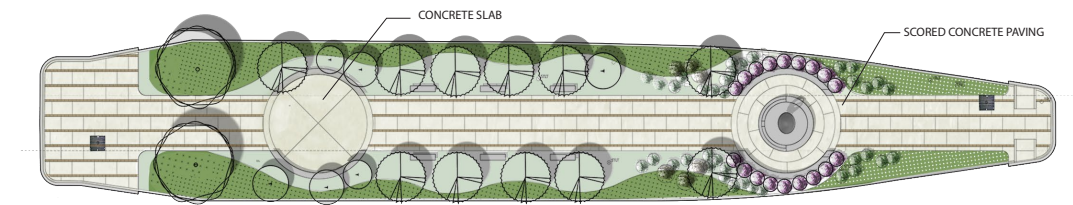


# BASE PLAN

## PAVING ALTERNATIVE 1



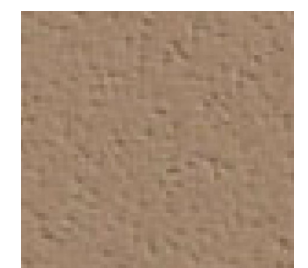
## PAVING ALTERNATIVE 2



## PAVING COLOR SAMPLE

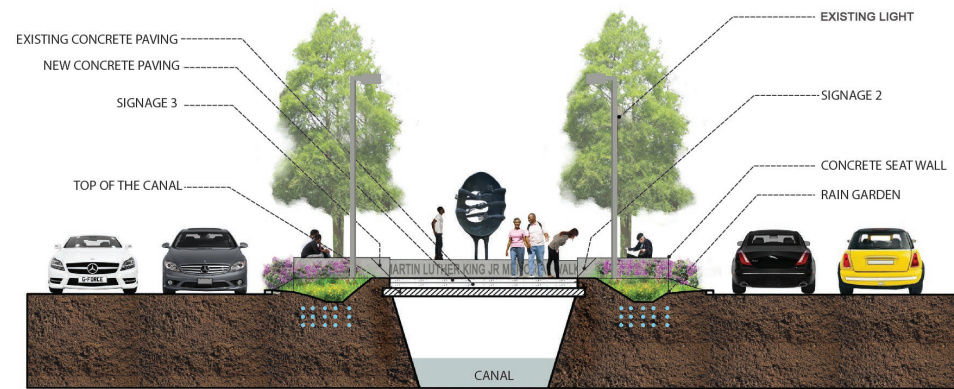


Hayride  
Chromogen Integral Color  
Item Number: CIC 3010, 11b

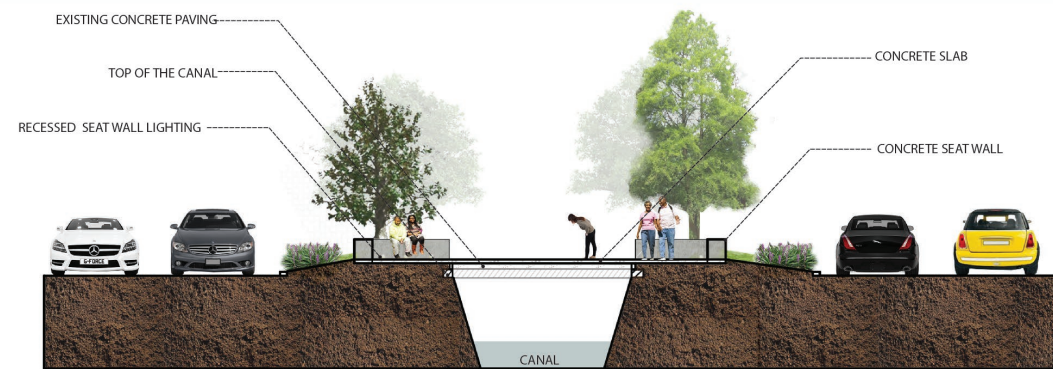


Wheat Fields  
Chromogen Integral Color  
Item Number: CIC 2010, 21b

# SECTION



SECTION A-A



SECTION B-B

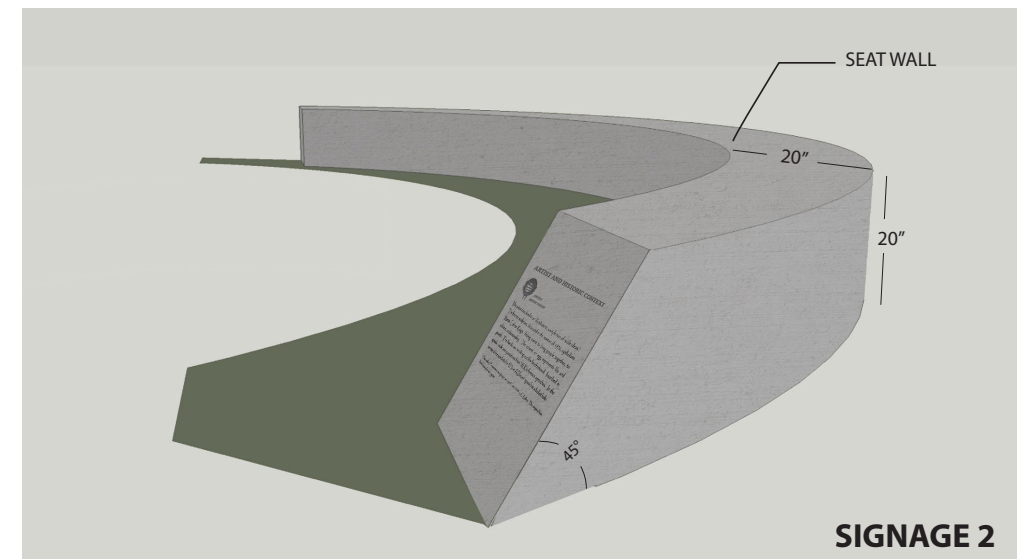
# PHASE 2



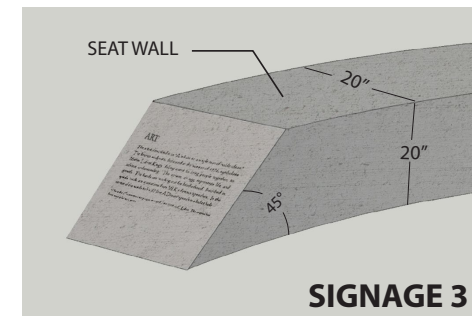
## NOTES

1. The mosaic will be placed on a concrete slab. It will be designed and placed later potentially through a New Orleans Arts Council process.

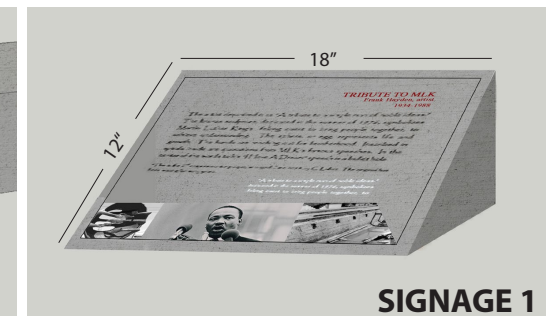
# SIGNAGE



SIGNAGE 2



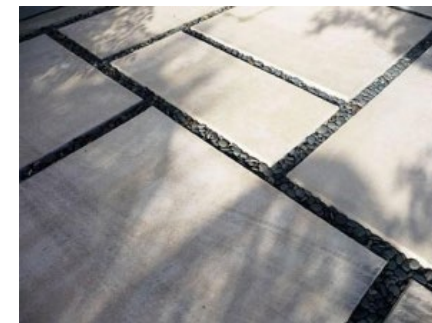
SIGNAGE 3



SIGNAGE 1

# PRECEDENT

## CONCRETE PAVING



## LIGHTING

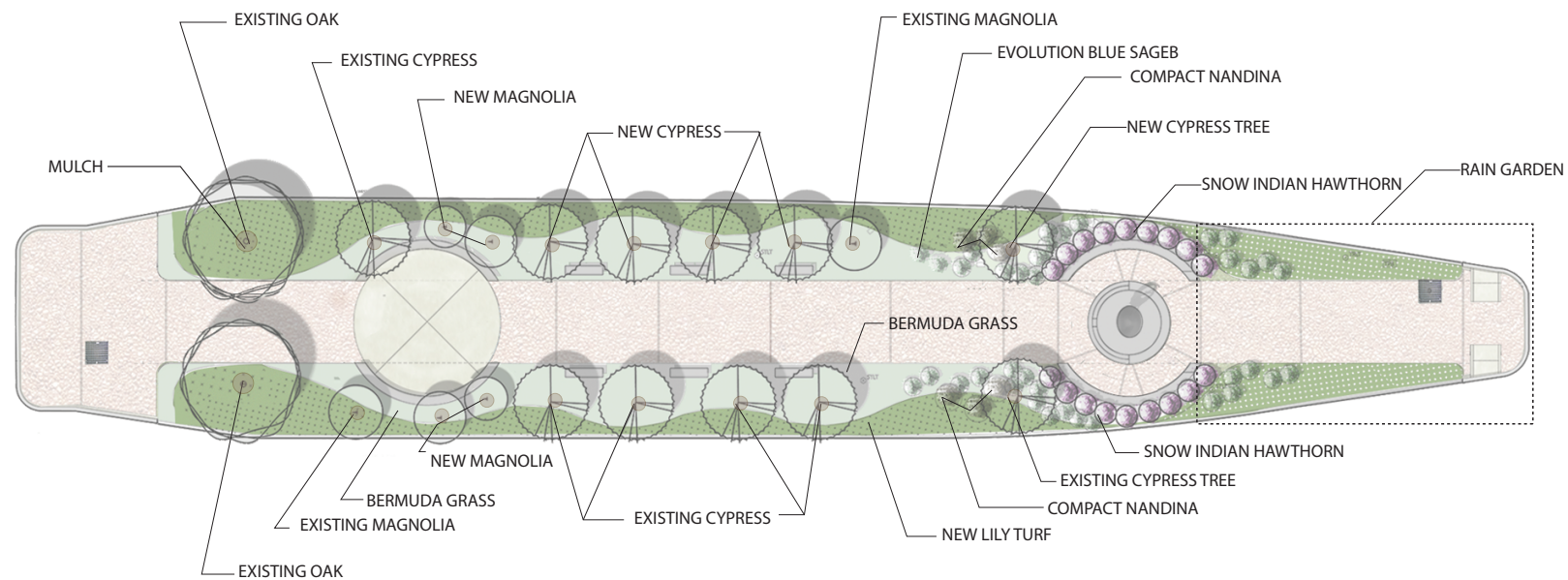


## CONCRETE SEAT WALL

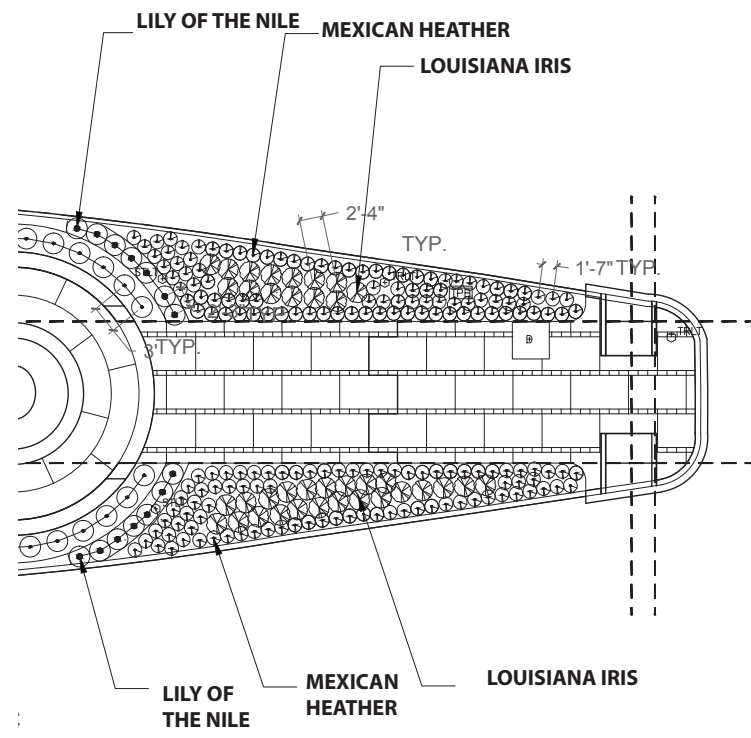


Resources: [www.cnn.com](http://www.cnn.com)

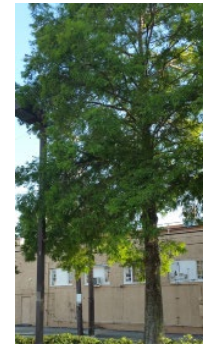
# PLANTING DETAIL



# RAIN GARDEN PLANTING DETAIL



## TREE



Baldcypress- *Taxodium distichum*



Southern Magnolia- *Magnolia grandiflora*



Oak-*Quercus virginiana*

## SHRUB



Snow Indian Hawthorn-*Raphiolepis indica 'Snow'*



Compact Nandina-*Nandina domestica 'Compacta'*

## GROUNDCOVER



Lily Turf- *Liriope muscari*



Bermuda Grass- *Cynodon dactylon*

## PERENNIAL



Salvia Evolution Violet-*Salvia farinacea Evolution Violet*

# RAIN GARDEN PLANTING



Lily of the Nile-*Agapanthus africanus*

Photo Resources: www.google.com

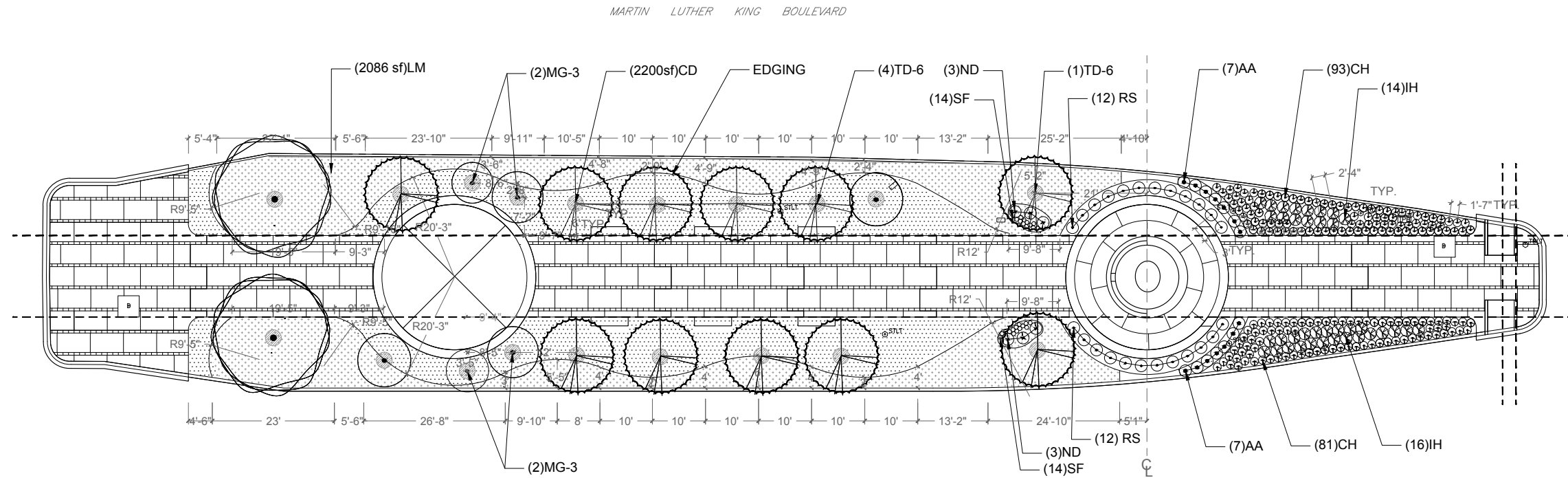


Louisiana Irises -*Iris hexagona*



Mexican Heather-*Cuphea hyssopifolia*

# PLANTING SCHEDULE



PLANTING PLAN  
1" = 10'-0"

| PLANTING SCHEDULE |    |                                   |                         |              |          |          |           |
|-------------------|----|-----------------------------------|-------------------------|--------------|----------|----------|-----------|
| TYPE              |    | BOTANICAL NAME                    | COMMON NAME             | SIZE         | QUANTITY | SPACING  | REMARKS   |
| TREES             | TD | Taxodium distichum                | Baldcypress             | 3"-3.5" cal. | 5        | 15' O.C  | Container |
|                   | MG | Magnolia grandiflora              | Southern Magnolia       | 3" cal.      | 4        | Single   | Container |
| SHRUB             | RS | Raphiolepis indica 'Snow'         | Indian Hawthorn         | 3 gal.       | 24       | 3' O.C   | Container |
|                   | ND | Nandina domestica 'Compacta'      | Compact Nandina         | 3 gal.       | 6        | 3' O.C   | Container |
| PERENNIAL         | SF | Salvia Farinacea Evolution Violet | Salvia Evolution Violet | 1 gal.       | 27       | 9" O.C   | Container |
|                   | AA | Agapanthus africanus              | Lily of the Nile        | 1 gal.       | 14       | 2'3" O.C | Container |
|                   | IH | Iris hexagona                     | Louisiana Iris          | 1 gal.       | 38       | 2'4" O.C | Container |
| GROUND COVER      | CH | Cuphea hyssopifolia               | Mexican Heather         | 1 gal.       | 174      | 1'6" O.C | Container |
|                   | LM | Liriope muscari                   | Lily Turf               | 1 gal.       | 2421     | 1' O.C   | Container |
|                   | CD | Cynodon dactylon                  | Bermuda Grass           |              | 1972 sf  |          | Sod       |