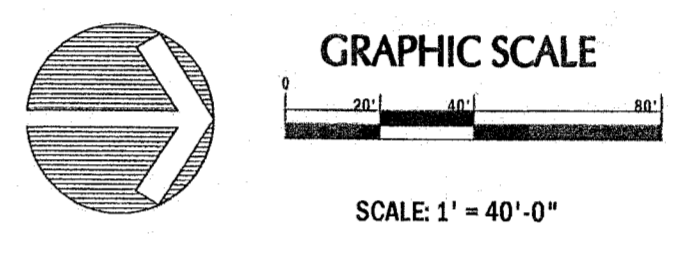


NOTES:

1. CONTRACTOR IS RESPONSIBLE FOR REPAIRING AND/OR REPLACING ANY DAMAGED AREAS AND REPAIRING ANY RUTS, CAUSED DURING INSTALLATION OF SITE CONDITIONS OR NEWLY PLANTED MATERIAL.
2. CONTRACTOR TO COORDINATE WORK WITH OTHER CONTRACTORS ON SITE.
3. EXISTING TREES WITHIN 50' OF PROJECT LIMITS TO BE PROTECTED AT ALL TIMES. CONSTRUCTION FENCE TO BE INSTALLED PRIOR TO CONSTRUCTION.
4. CONTRACTOR SHALL NOT STORE EQUIPMENT AND MATERIALS ON SITE THAT OCCUR UNDER DRIPLINE OF ANY TREES. AREAS TO BE VERIFIED IN FIELD WITH LANDSCAPE ARCHITECT BEFORE CONSTRUCTION COMMENCES.
5. ALL LOCATIONS OF EXISTING TREES, STUMPS AND LIGHTING ARE APPROXIMATE. MEASUREMENTS SHOULD BE VERIFIED IN FIELD. VERIFY ALL DIMENSIONS AND EXISTING CONDITIONS PRIOR TO COMMENCING WORK. REPORT ANY AND ALL DISCREPANCIES TO LANDSCAPE ARCHITECT IMMEDIATELY.
6. CONTRACTOR SHALL BE SOLELY RESPONSIBLE FOR LOCATING SITE UTILITIES PRIOR TO COMMENCING WORK. CONTRACTOR SHALL CONTACT CALL ONE AND/OR ALL UTILITY COMPANIES TO LOCATE THE EXISTING SITE UTILITIES. REPAIRS TO ANY UTILITIES DAMAGED DURING CONSTRUCTION SHALL BE PAID FOR BY CONTRACTOR.
7. CONTRACTOR TO CONFIRM ALL LOCATIONS OF EXISTING CONDITIONS AND IMPROVEMENTS AS THEY RELATE TO EXISTING CONDITIONS BEFORE CONSTRUCTION.
8. CONTRACTOR TO MAINTAIN ACCESS TO AND USE OF EXISTING PARKING AREAS UNLESS REQUIRED FOR CONSTRUCTION ACTIVITIES AND ONLY AFTER APPROVAL OF AUDUBON NATURE INSTITUTE.



Audubon Nature Institute
Celebrating the Wonders of Nature
 DESIGN AND EXHIBITRY

Audubon Nature Institute
 6500 Magazine Street
 New Orleans, Louisiana 70118

AUDUBON LOUISIANA NATURE CENTER
 A Facility of the Audubon Nature Institute

Entrance Improvement Plan

ENTRY GATE PLAN

PROJECT NUMBER: ALNC.001.1 DATE: 12/22/2016 SCALE: VARIES

PROJECT MANAGER: KYLE P. MCGEEHEE

REVISIONS:

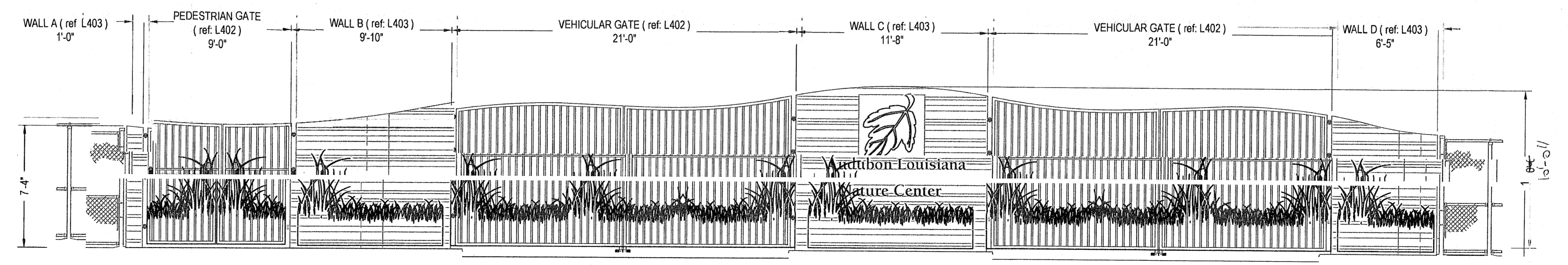
1	
2	
3	
4	

L400

KRAVET
 RICHARD S. KRAVET, AIA, NCARB
 ARCHITECT

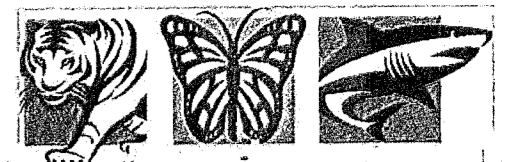
504-220-4649 www.kravetarchitect.com

1 OVERALL ENTRY GATE SITE PLAN
 L400 PLAN



2 ENTRY GATE AND WALL
 L400 ELEVATION

SCALE: 1/4" = 1' - 0"



Audubon Nature Institute
Celebrating the Wonders of Nature
DESIGN AND EXHIBITRY

Audubon Nature Institute
6500 Magazine Street
New Orleans, Louisiana 70118

AUDUBON LOUISIANA NATURE CENTER
A Facility of the Audubon Nature Institute

Entrance Improvement Plan

VEHICULAR GATE

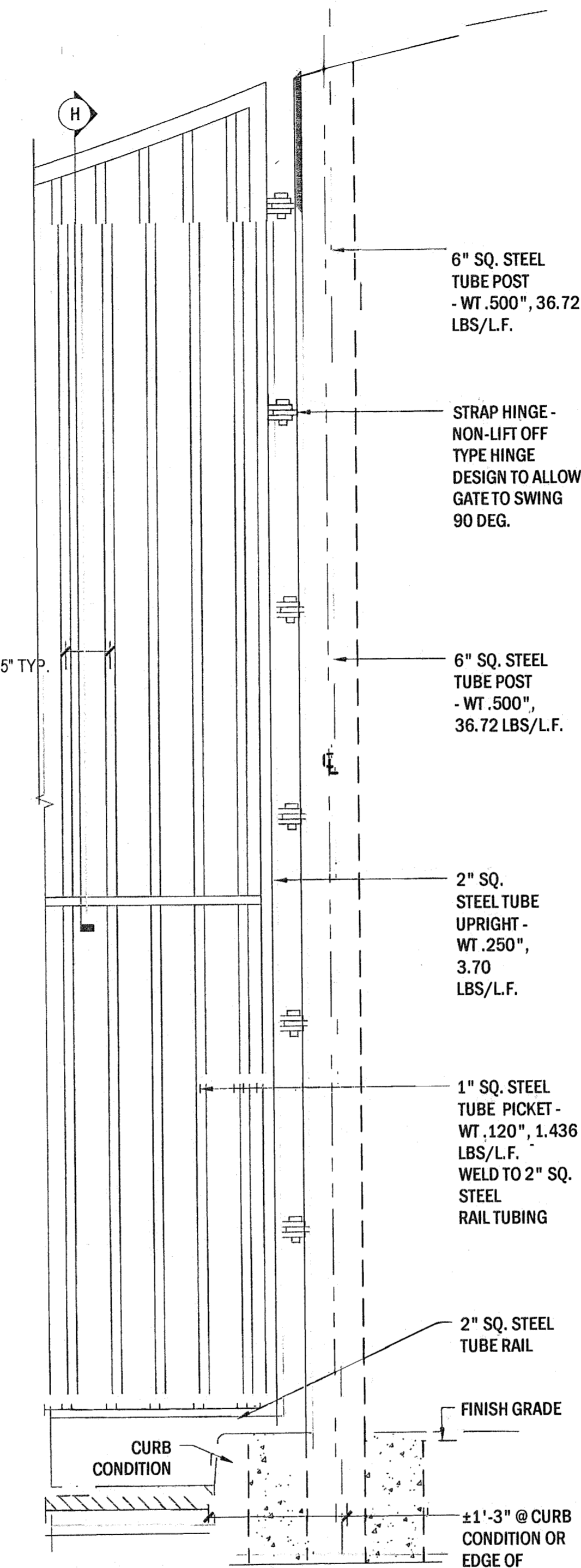
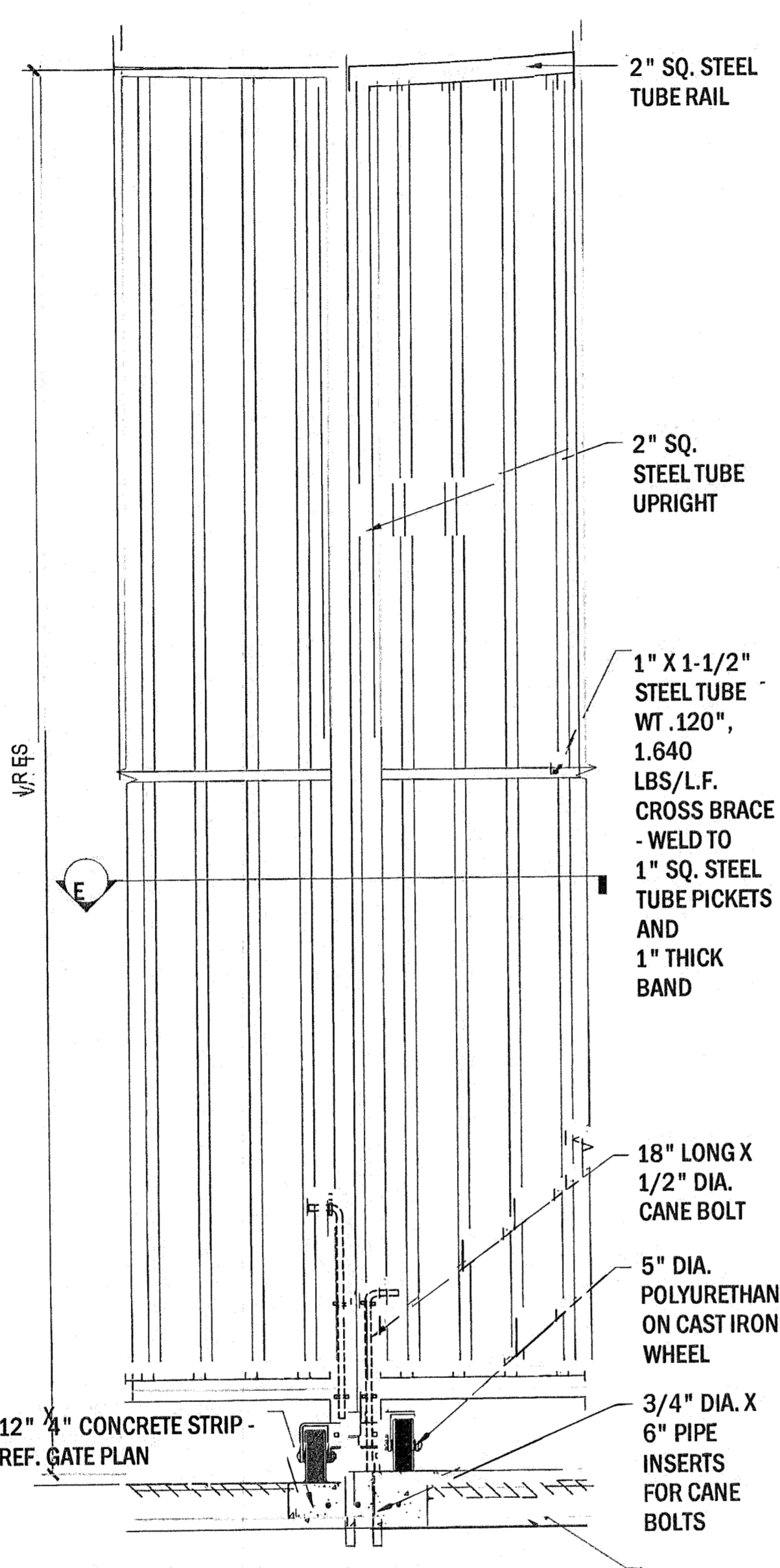
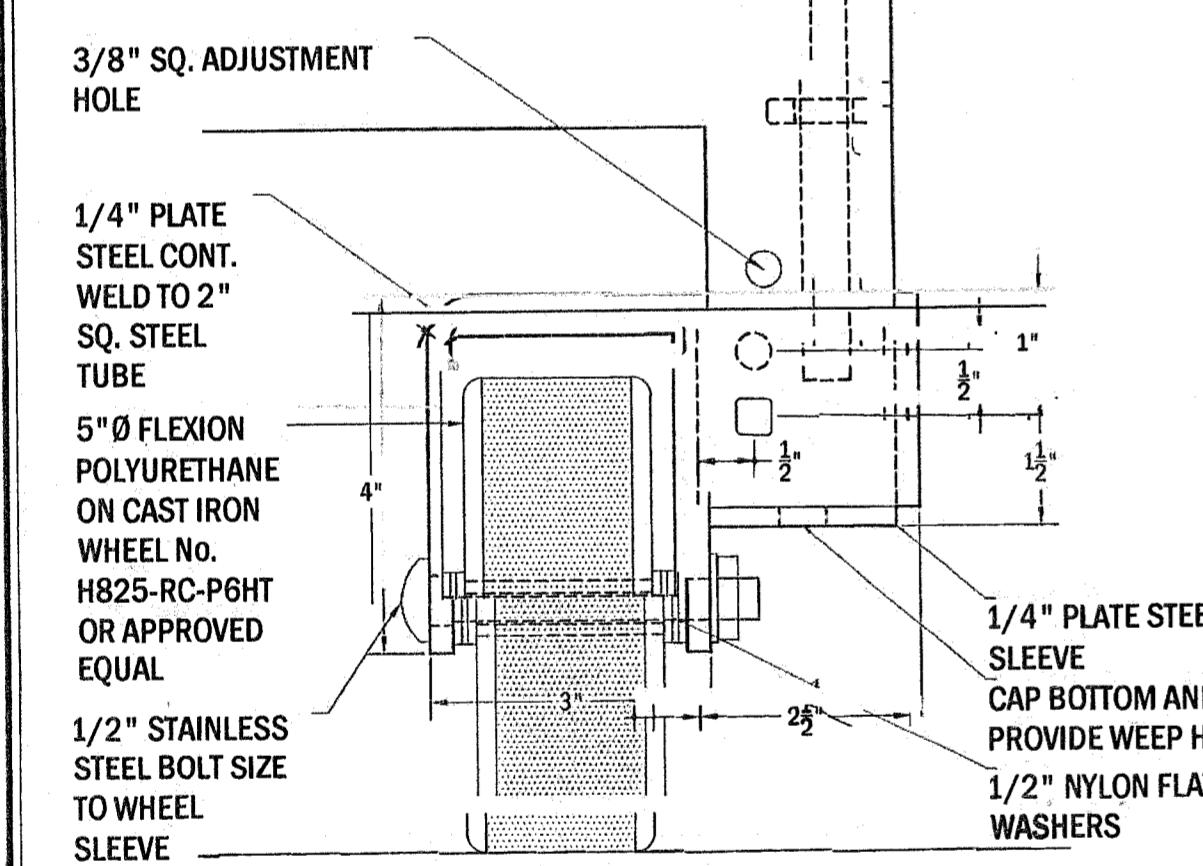
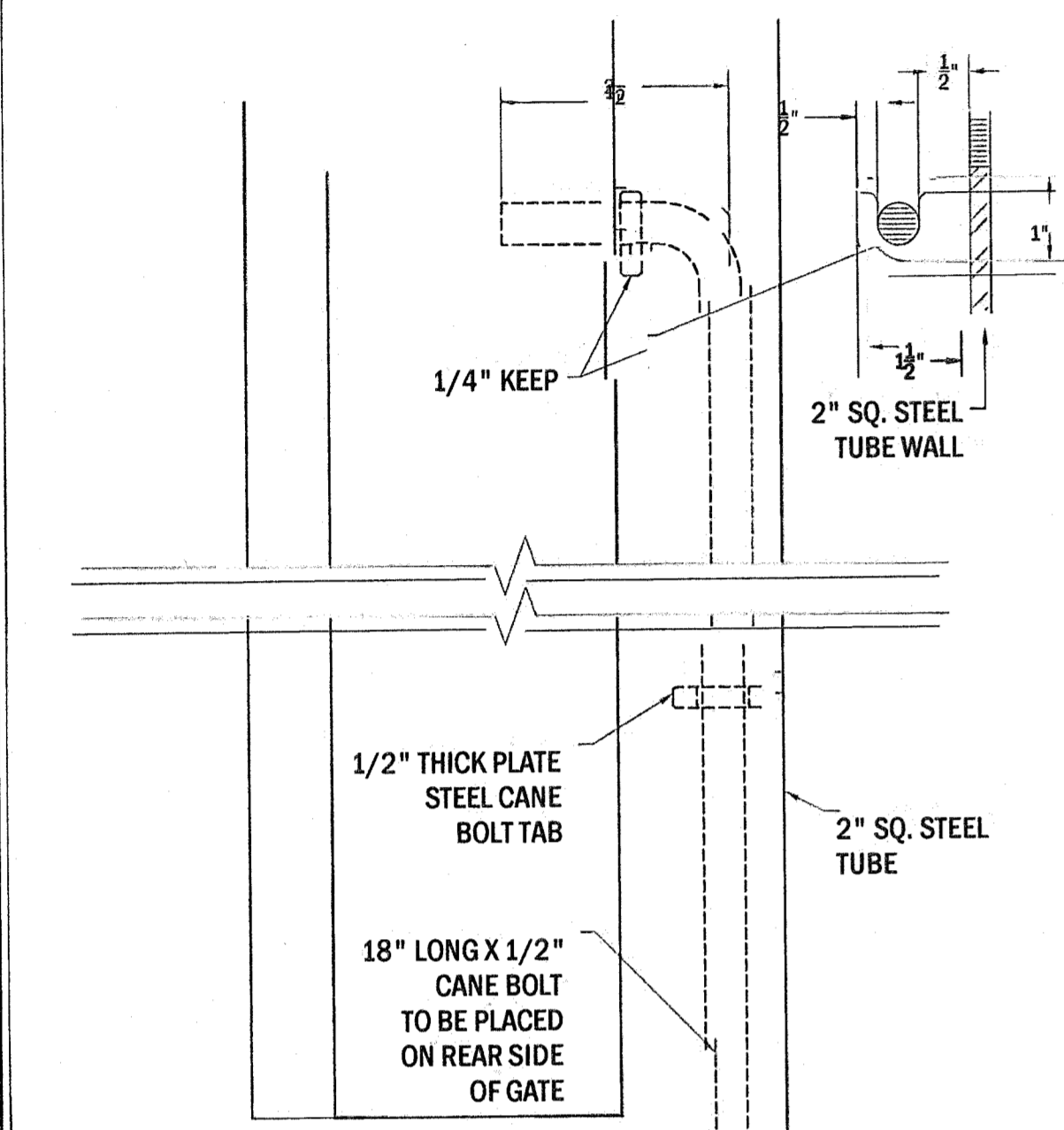
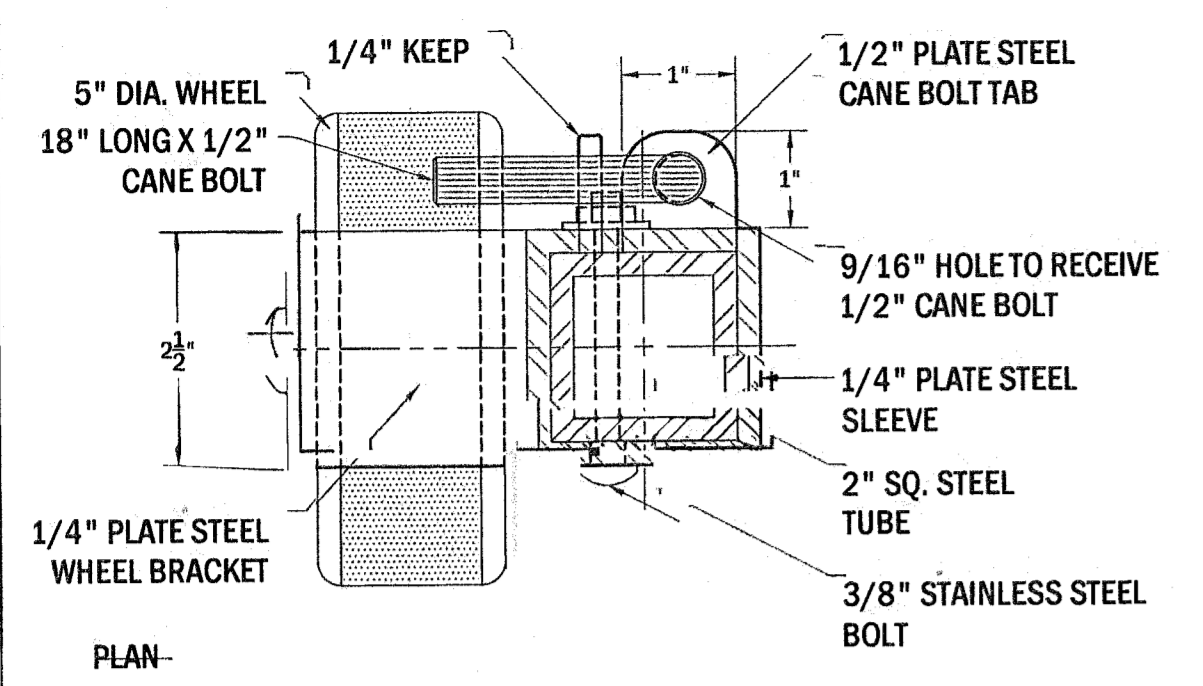
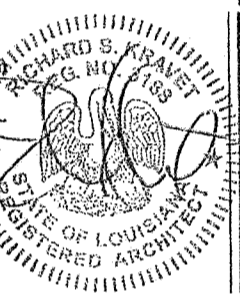
PROJECT NUMBER: ALNC.001.1 DATE: 12/22/2016 SCALE: VARIES
PROJECT DESIGNER: Kyle P. McGehee

REVISIONS	NO.	DESCRIPTION
	1	
	2	
	3	
	4	

L401

KRAVET
RICHARD S. KRAVET, AIA, NCARB
ARCHITECT

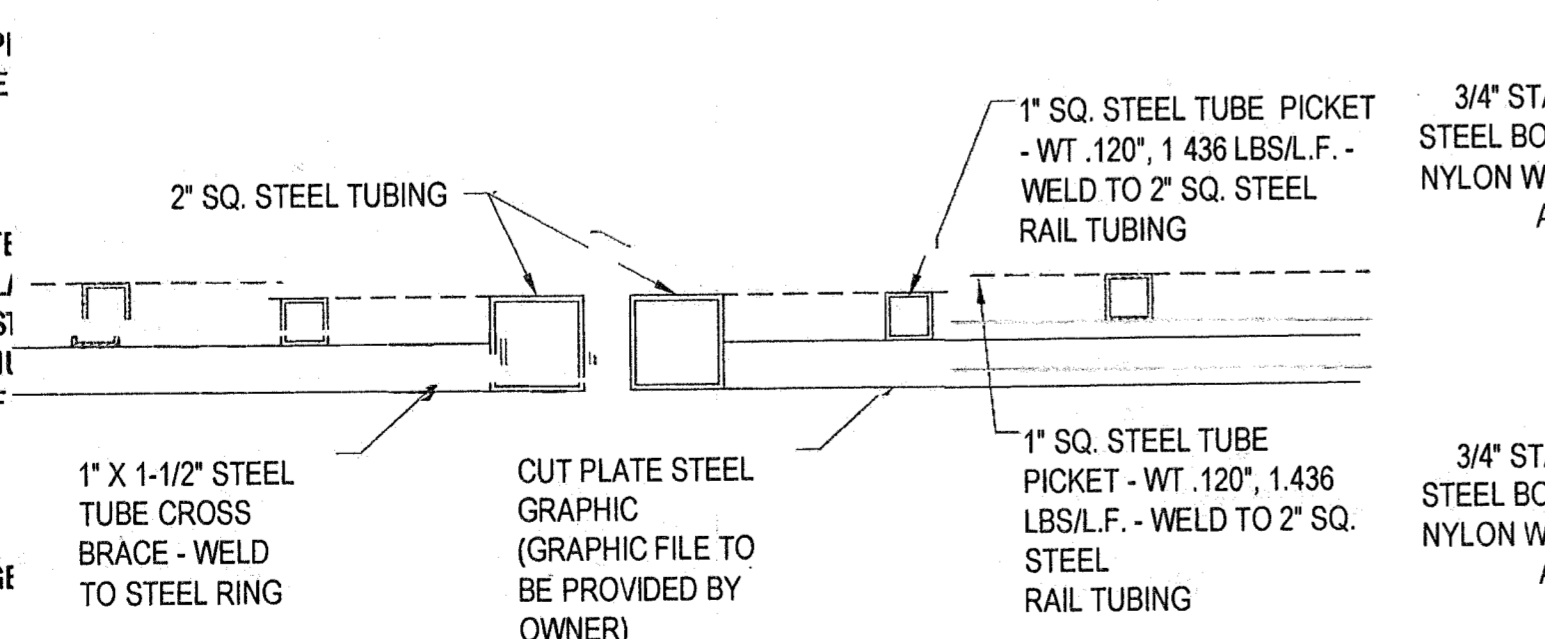
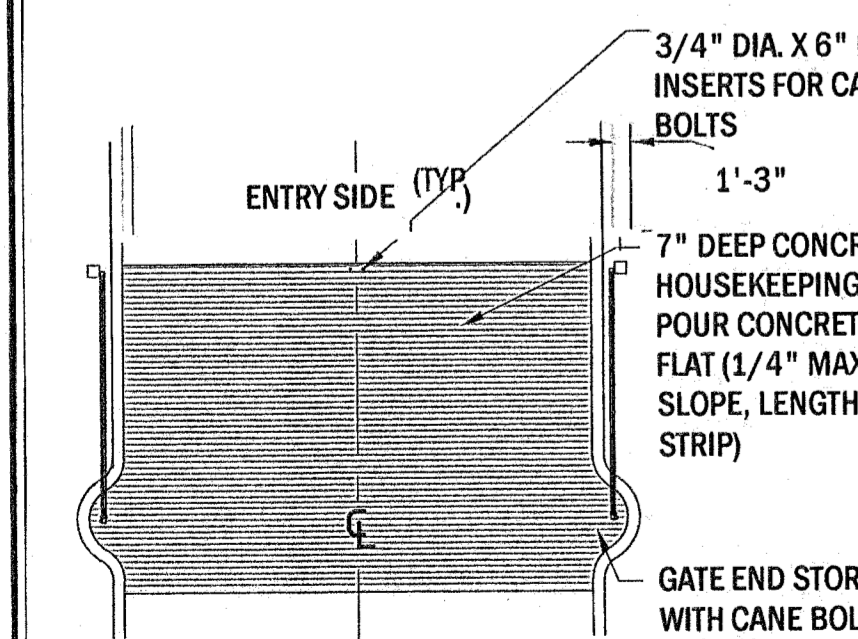
504-230-4649 www.kravetarchitects.com



A GATE WHEEL BRACKET AND CANE BOLT DETAIL - SCALE: 6" = 1' - 0"

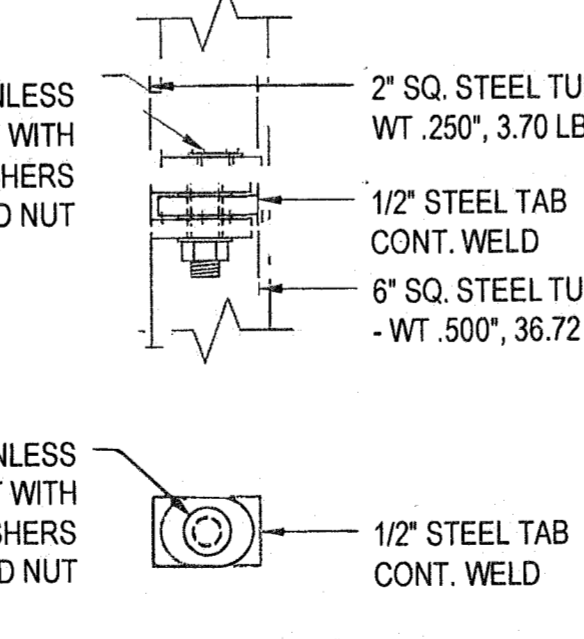
B TYPICAL DETAIL ELEVATION @ MIDDLE OF GATE - SCALE: 1" = 1' - 0"

C TYPICAL DETAIL ELEVATION @ POST - SCALE: 1" = 1' - 0"

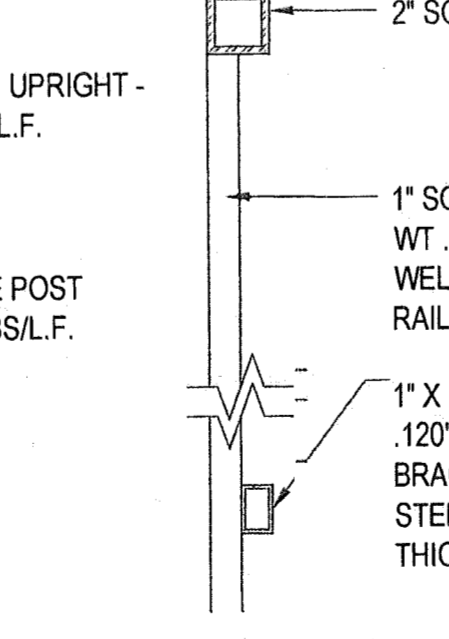


D TYPICAL GATE PLAN - SCALE: 1/8" = 1' - 0"

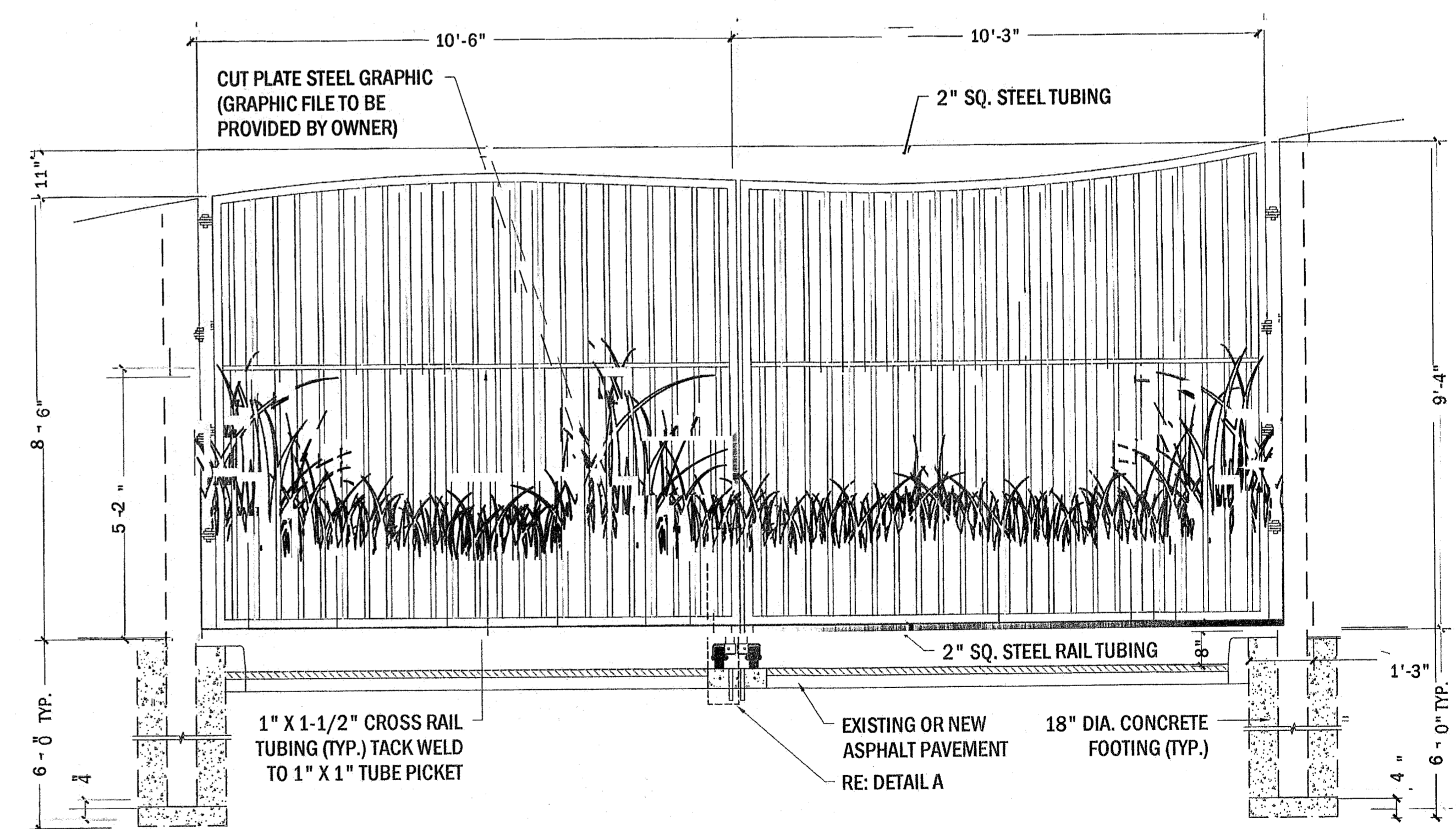
E DETAIL SECTION - SCALE: 1-1/2" = 1' - 0"



G TYPICAL GATE HINGE - SCALE: 2" = 1' - 0"



H TYPICAL SECTION - SCALE: 2" = 1' - 0"



F GATE ELEVATION - SCALE: 1/2" = 1' - 0"

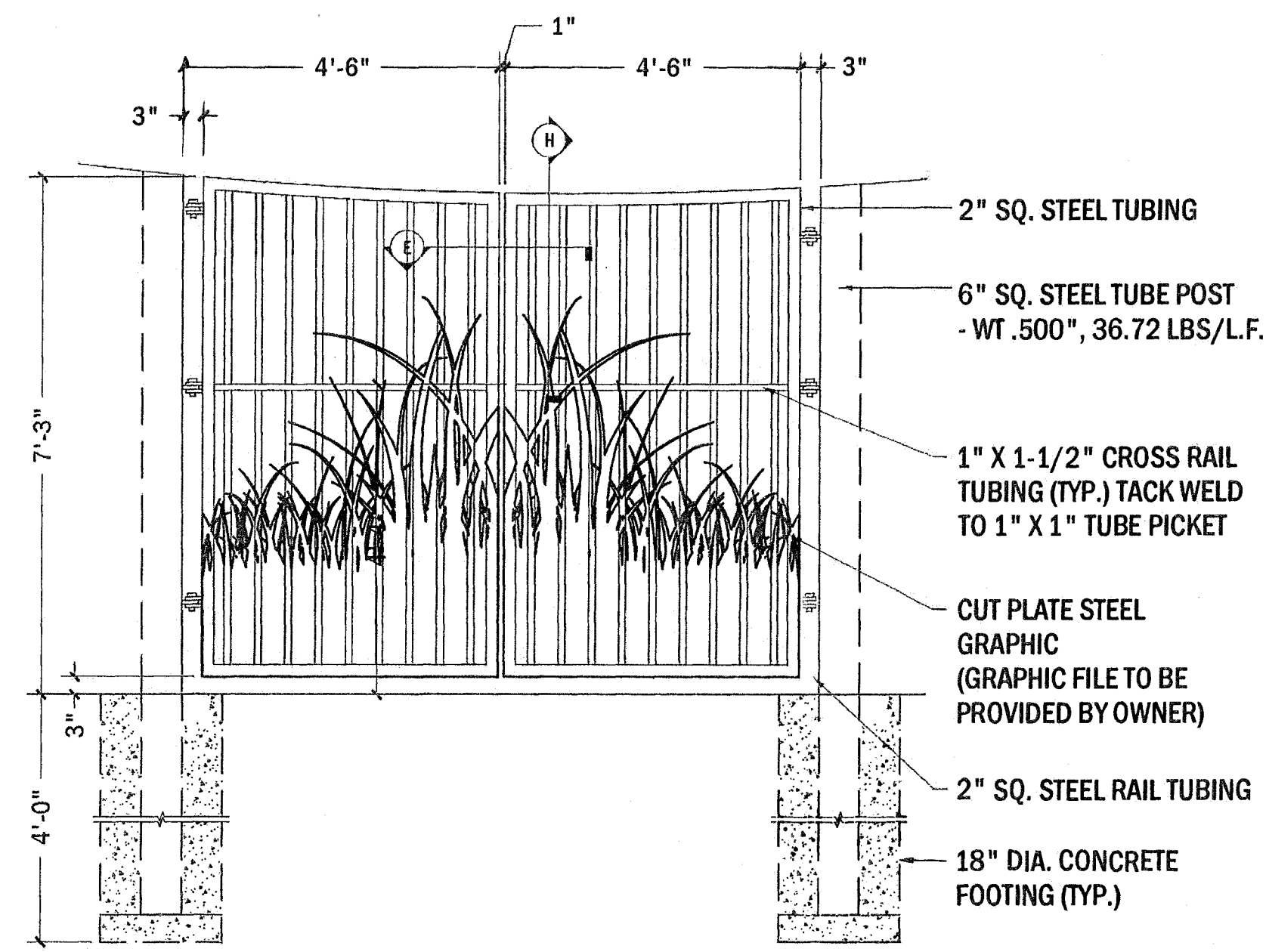
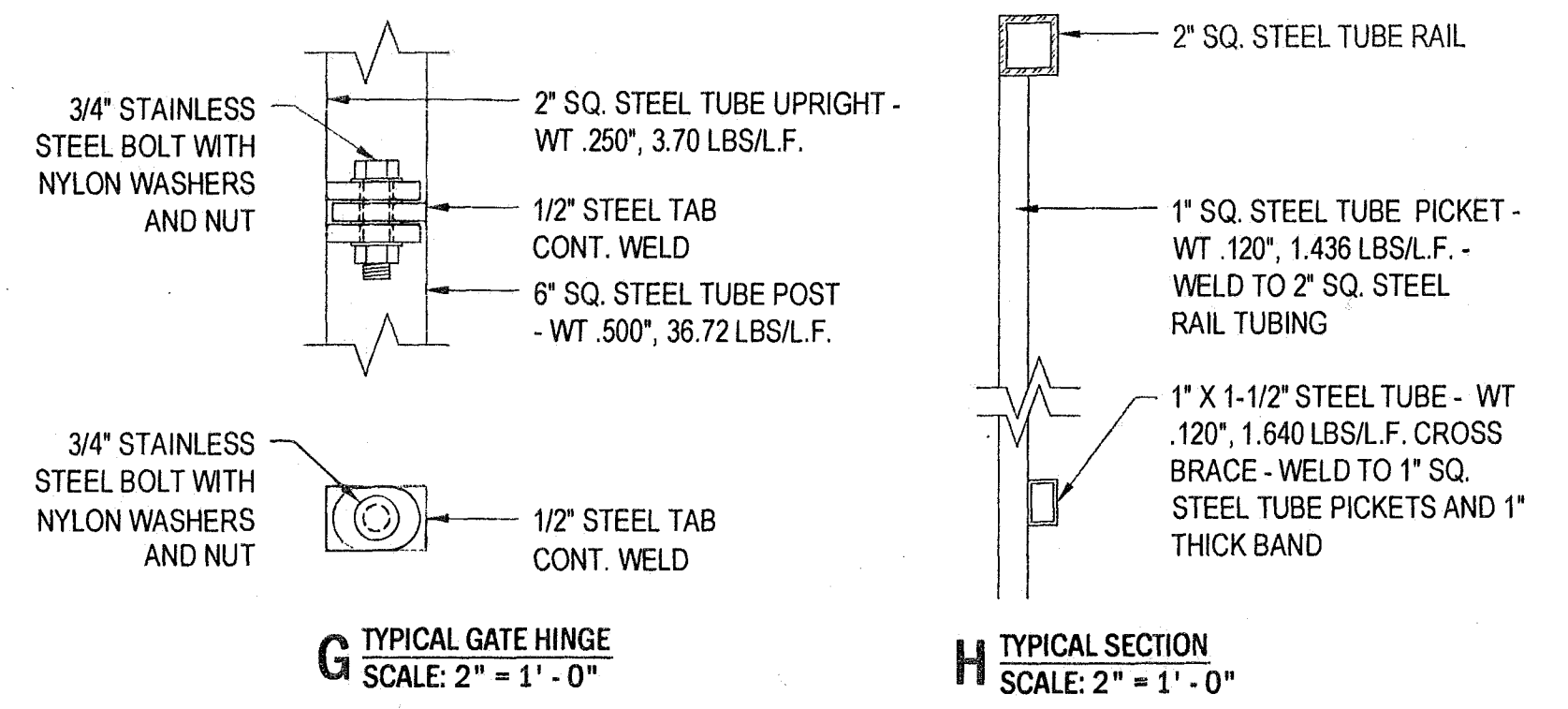
NOTES

- ALL IRON CROSS BRACES AND PICKETS TO BE WELDED AND GROUND SMOOTH. ALL MEMBERS TO BE PRIMED AND PAINTED - SEE SPECS
- COMPLETE GATE ASSEMBLY TO BE HOT DIPPED GALVANIZED AFTER FABRICATION, PROVIDE HOLES AS REQUIRED IN ASSEMBLY TO PREVENT WARPING DURING GALVANIZING PROCESS.
- CONCRETE FOOTING 6'-0" MINIMUM DEPTH DEPENDING ON SOIL CONDITIONS
- SHOP DRAWINGS SHALL BE REQUIRED.

1 ENTRY GATE (VEHICULAR) DETAILS

401 ELEVATION / SECTION / PLAN

SCALE: VARIES



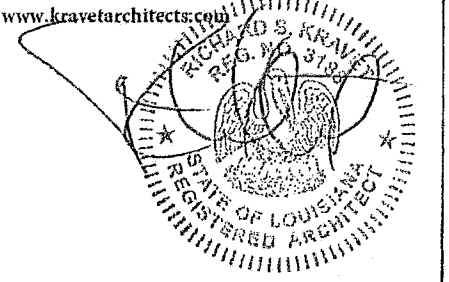
1 ENTRY GATE (PEDESTRIAN) DETAILS
 ELEVATION / SECTION / PLAN SCALE: VARIES



OWNER	Audubon Nature Institute 6500 Magazine Street New Orleans, Louisiana 70118									
ARCHITECT	KRAVET									
DATE	12/22/2016	SCALE VARIES								
PROJECT NUMBER	ALNC.001.1	FEDERAL LEGISLATOR								
PROJECT ORIGINATOR	Kyle P. McGehee									
REVISIONS	<table border="1"> <tr><td>1</td><td></td></tr> <tr><td>2</td><td></td></tr> <tr><td>3</td><td></td></tr> <tr><td>4</td><td></td></tr> </table>		1		2		3		4	
1										
2										
3										
4										
PEDESTRIAN GATE										
PEDESTRIAN GATE										
L402										



RICHARD S. KRAVET, AIA, NCARB
 ARCHITECT
 504-220-4649 www.kravetarchitect.com



E:\Projects\Audubon Nature Center\ALNC\001.1 ENTRY GATE PLAN.dwg 12/22/2016 10:02 AM 2016-11-23-11:55:58 AM



Audubon Nature Institute
Celebrating the Wonders of Nature

DESIGN AND EXHIBITRY

Audubon Nature Institute
6500 Magazine Street
New Orleans, Louisiana 70118

AUDUBON LOUISIANA NATURE CENTER
A Facility of the Audubon Nature Institute

PROJECT
Entrance Improvement Plan

DRAWING TITLE

ENTRY WALL

PROJECT NUMBER: ALNC.001.1 DATE: 12/22/2016 SCALE: VARIES

PROJECT DESIGNER: KYLE P. MCGEEHEE

NO.	DESCRIPTION
1	
2	
3	
4	

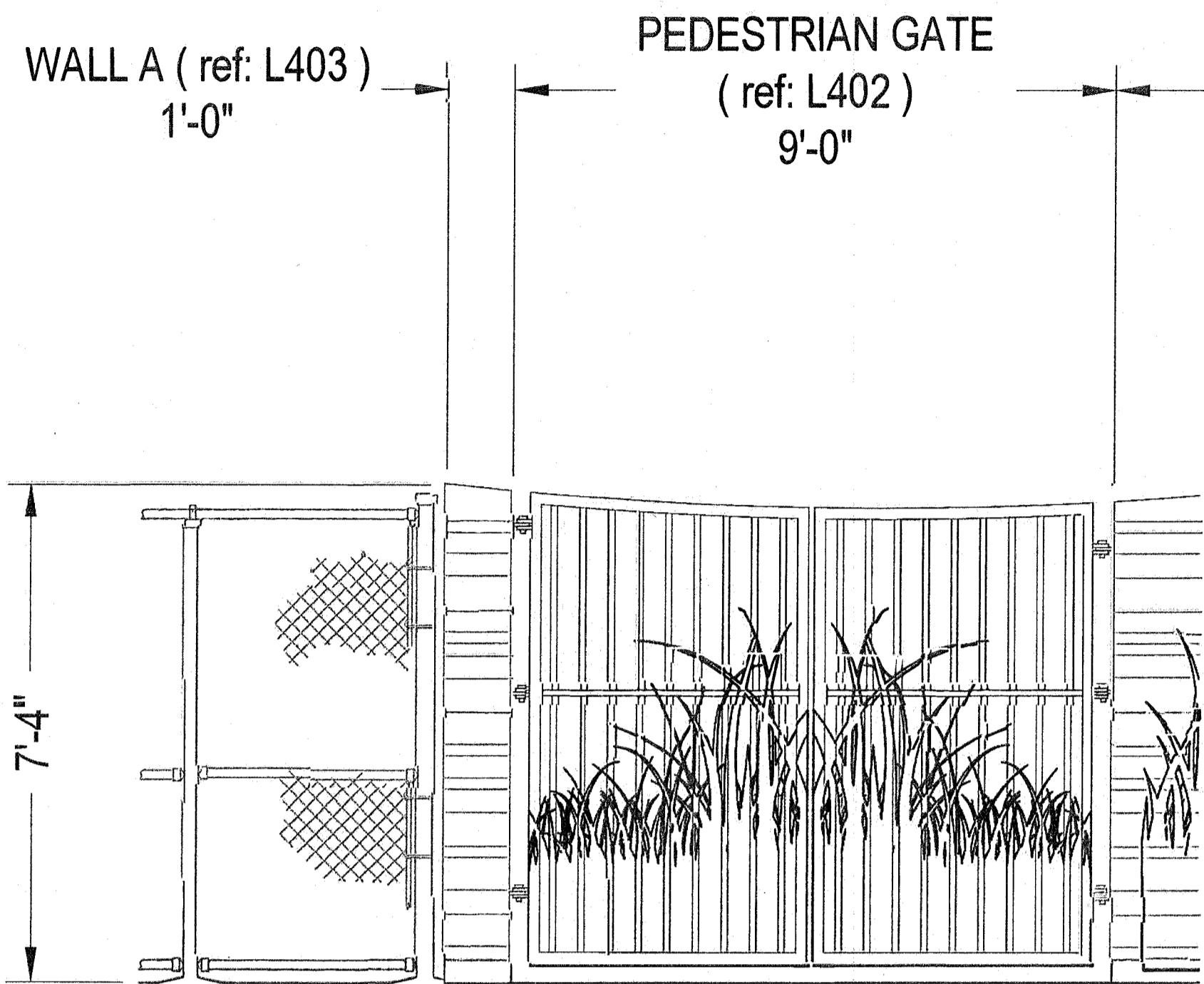
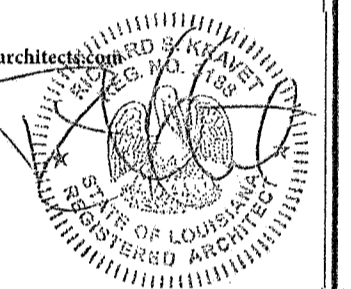
L403

KRAVET

RICHARD S. KRAVET, AIA, NCARB

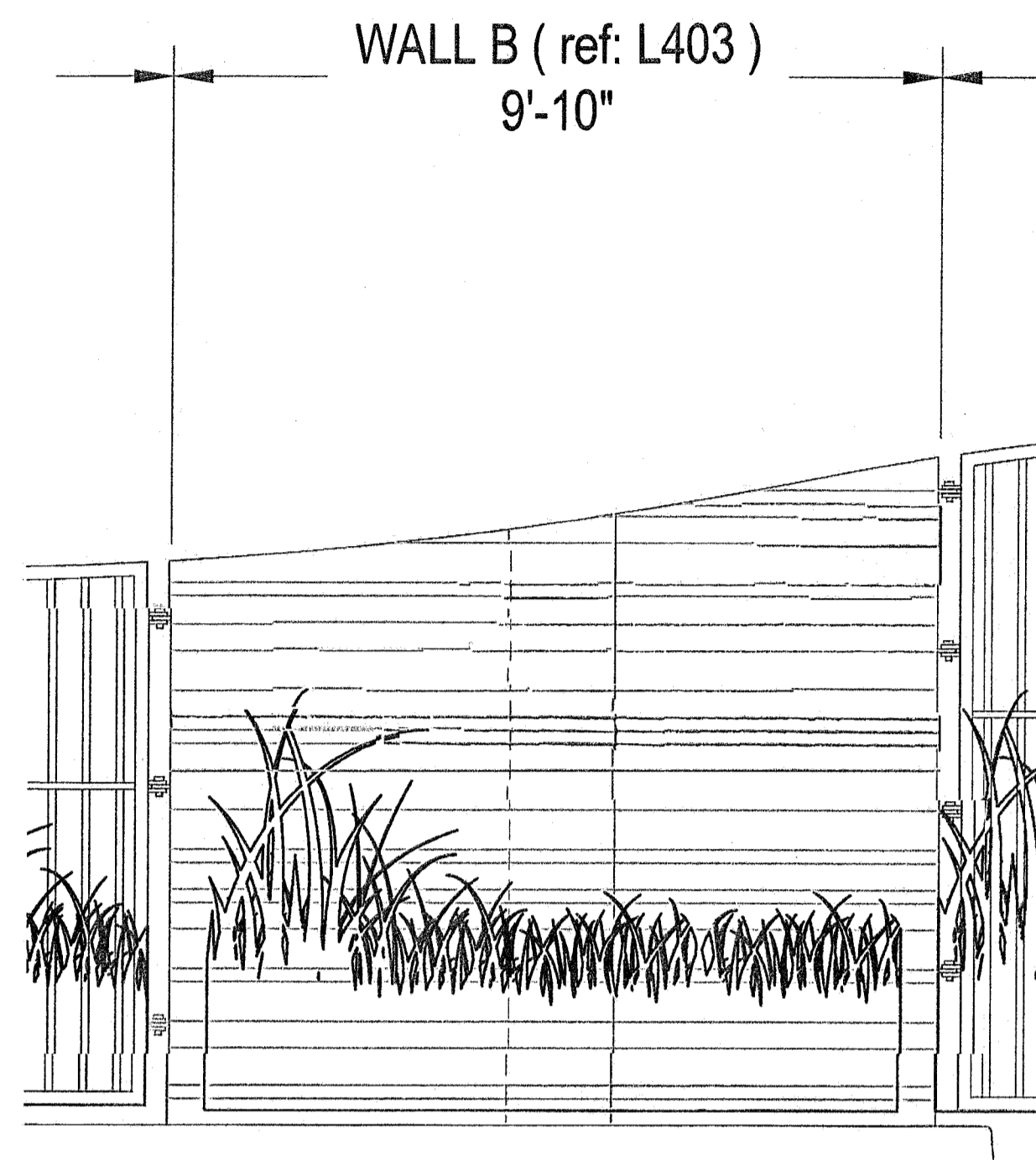
ARCHITECT

504-220-4649 www.kravetarchitect.com



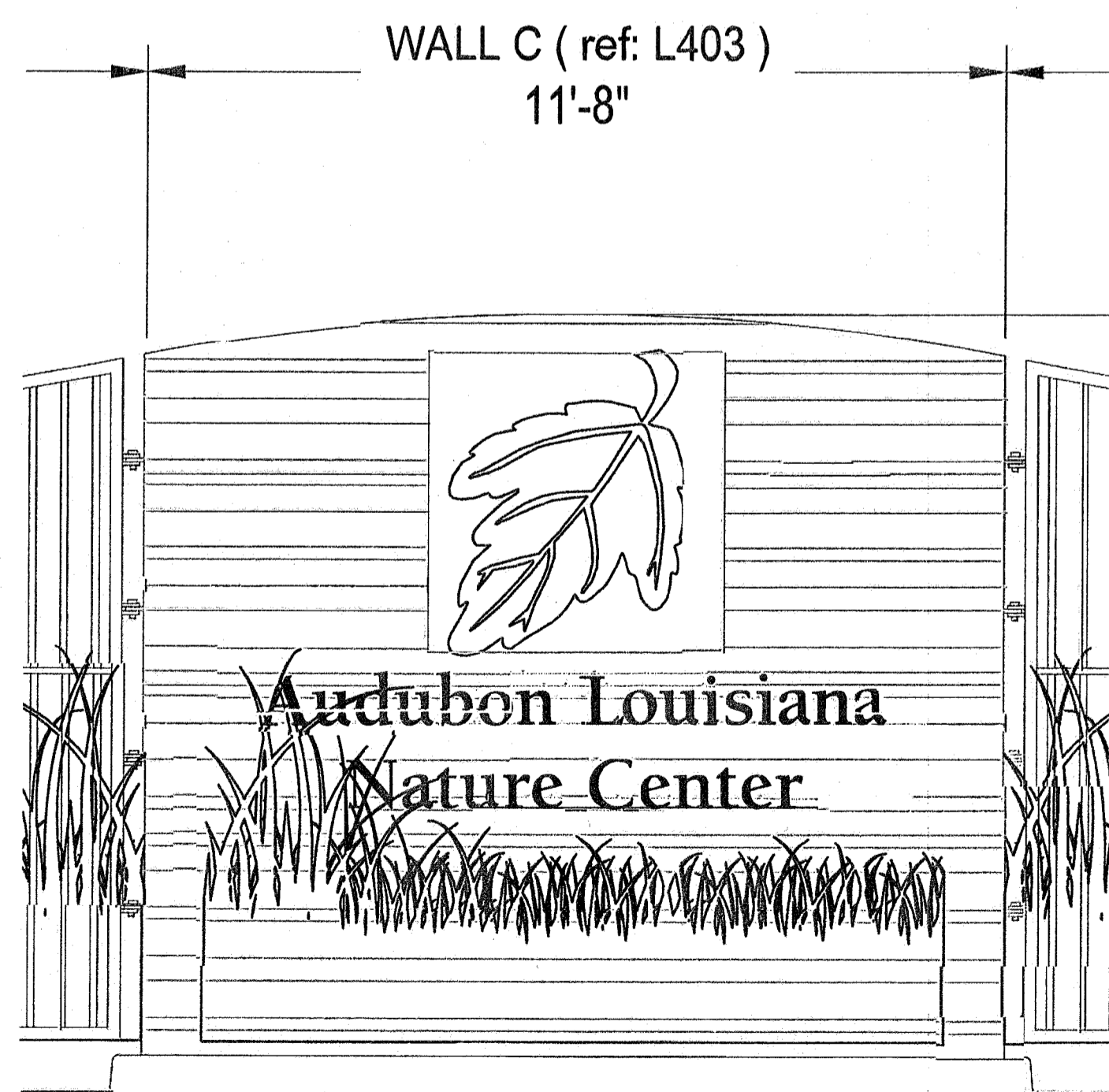
1 ENTRY WALL A DETAILS
L403 ELEVATION / SECTION / PLAN

SCALE: VARIES



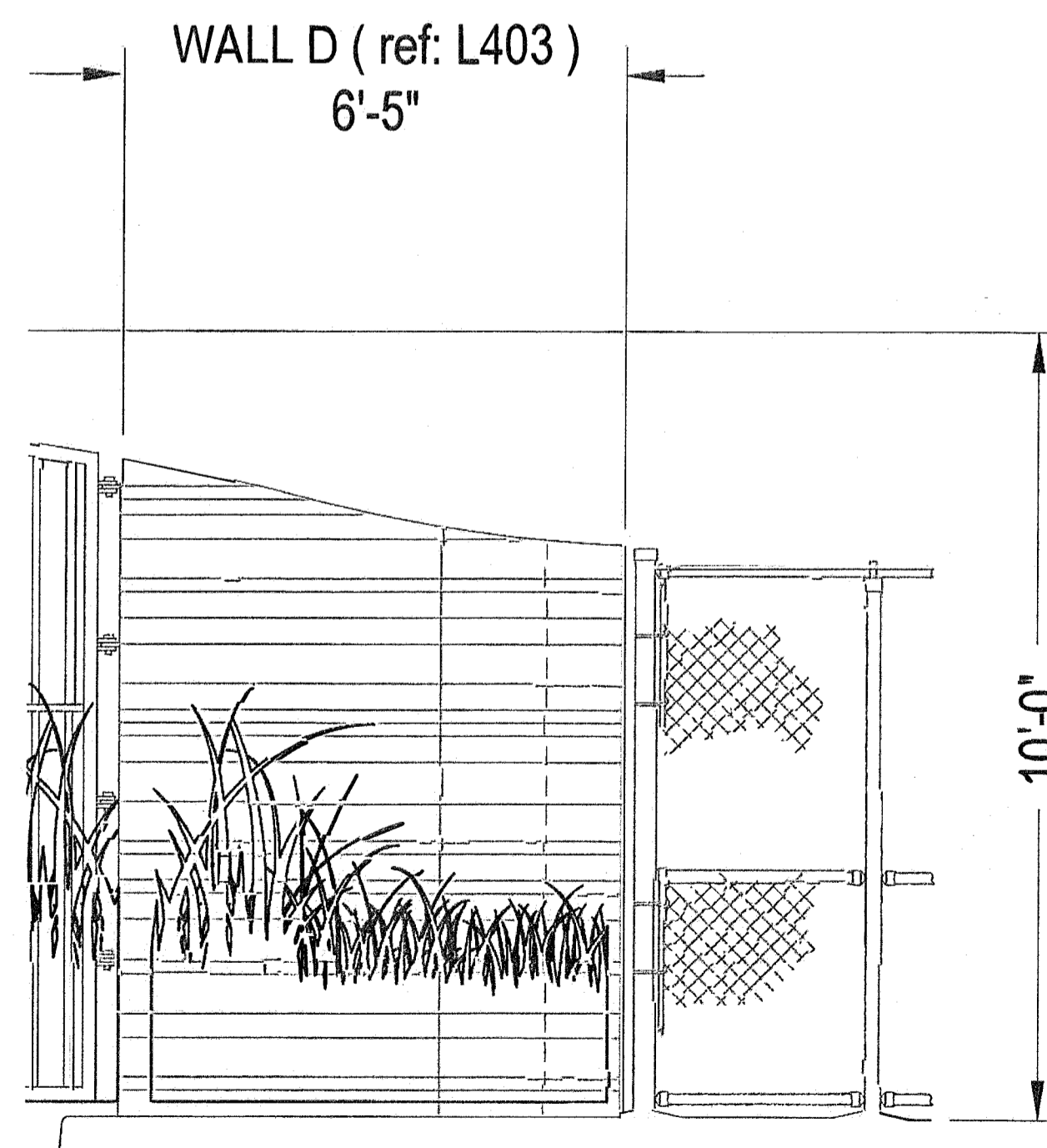
2 ENTRY WALL B DETAILS
L403 ELEVATION / SECTION / PLAN

SCALE: VARIES



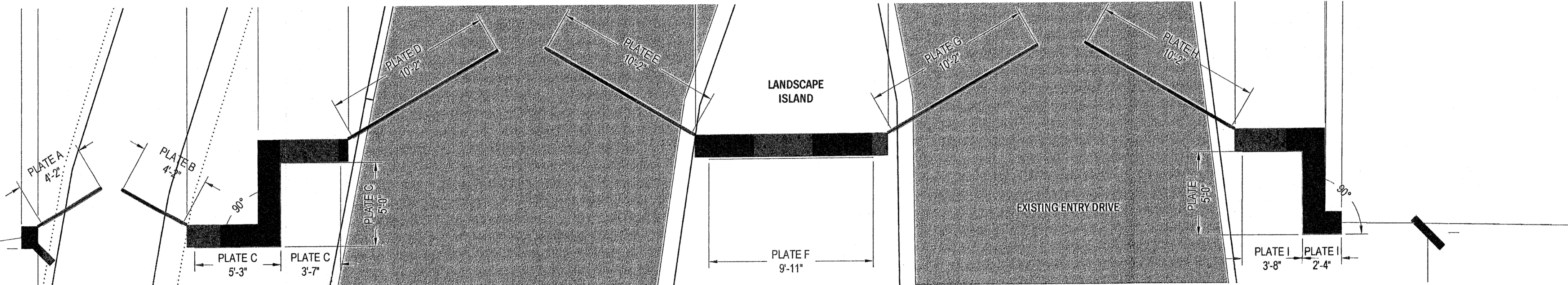
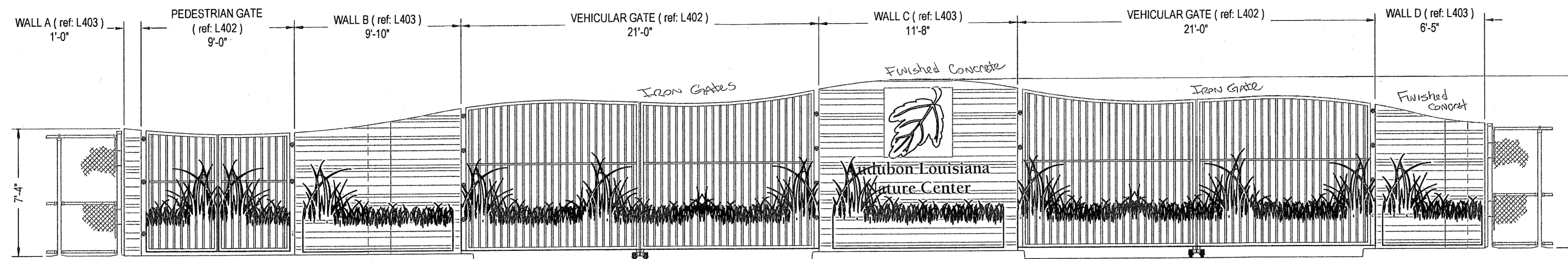
3 ENTRY WALL C DETAILS
L403 ELEVATION / SECTION / PLAN

SCALE: VARIES



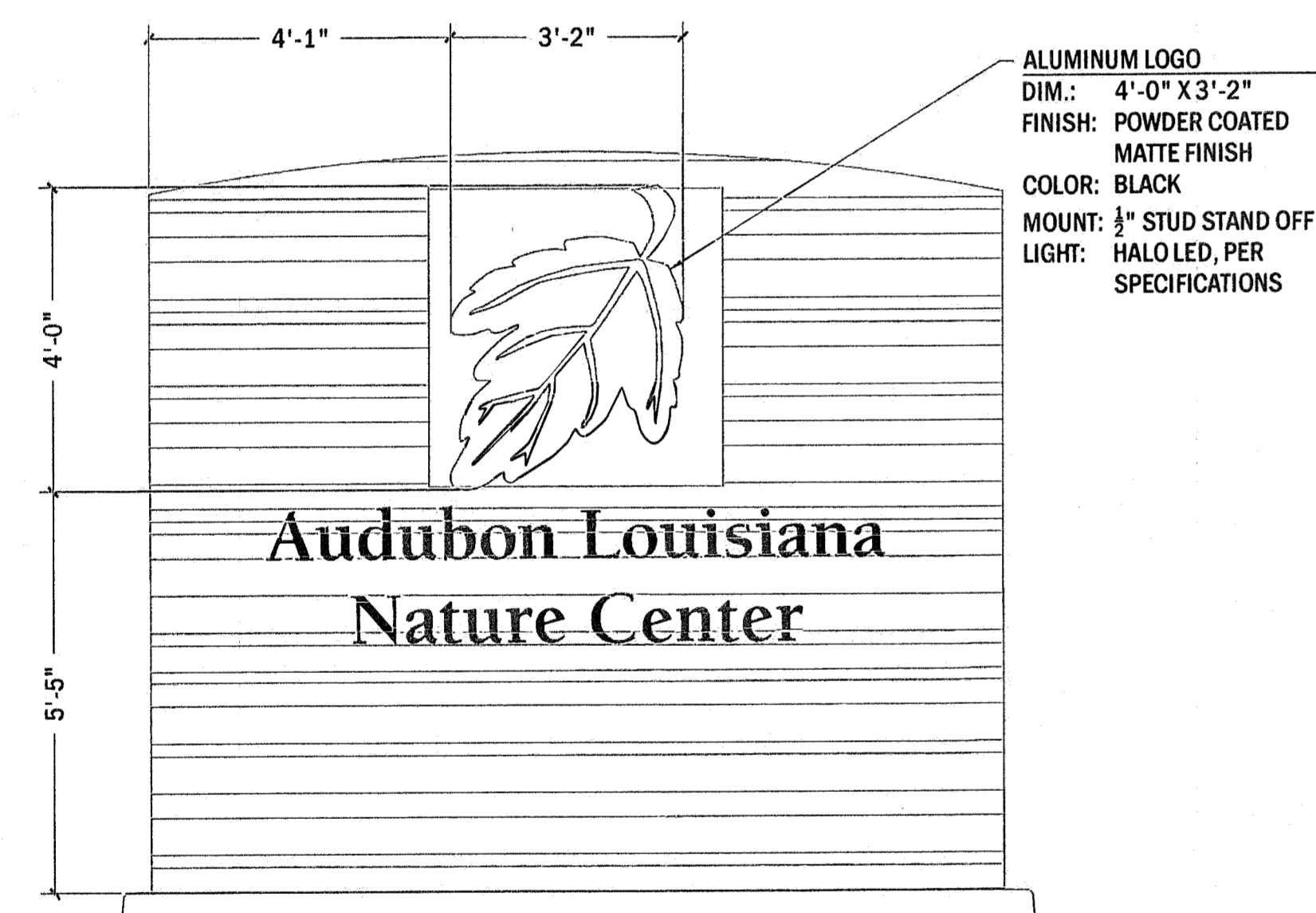
4 ENTRY WALL D DETAILS
L403 ELEVATION / SECTION / PLAN

SCALE: VARIES

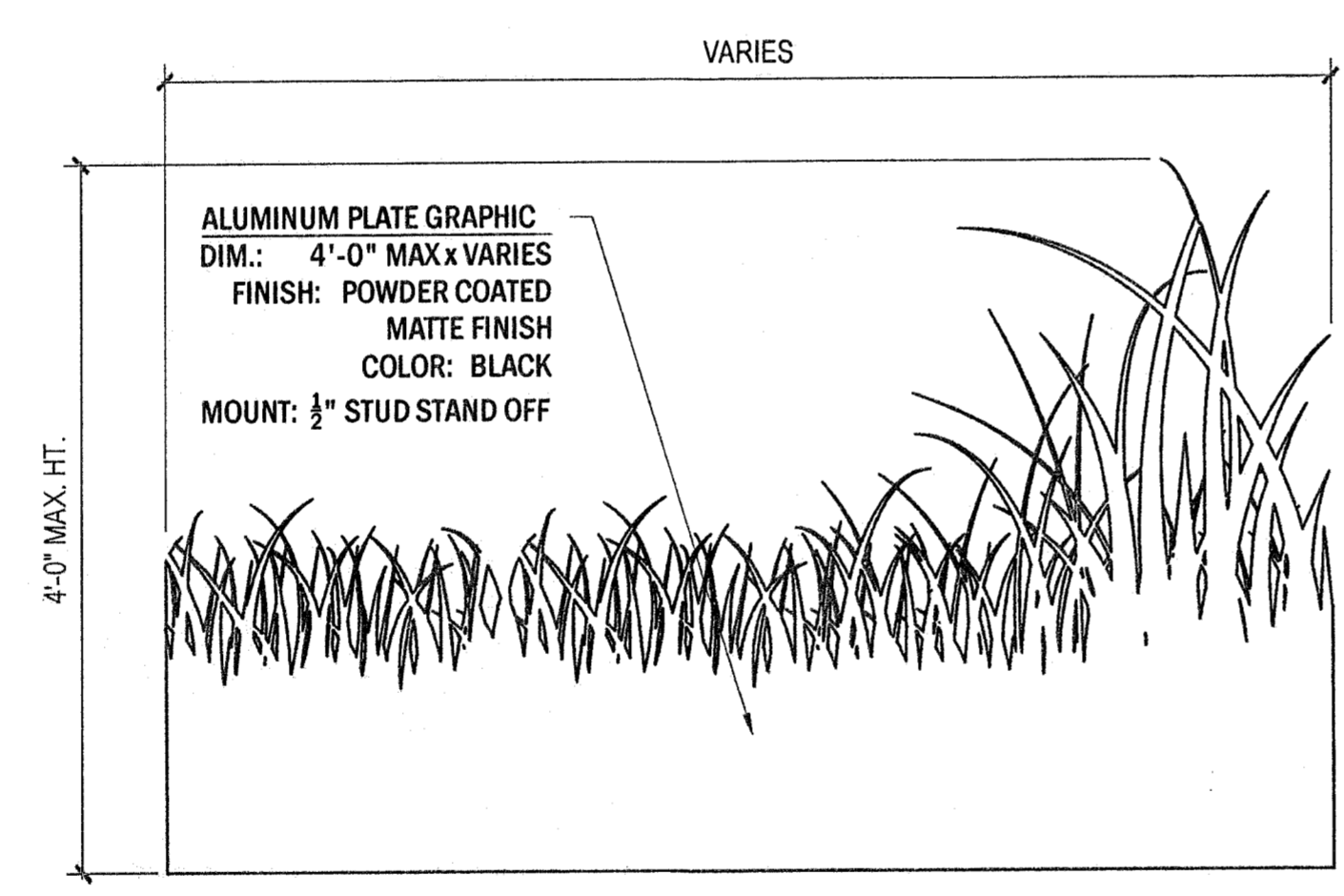


1 ENTRY GATE - ALUMINUM PLATE GRAPHICS AND BRANDING SIGNAGE
AD-1.0 ELEVATION/PLAN

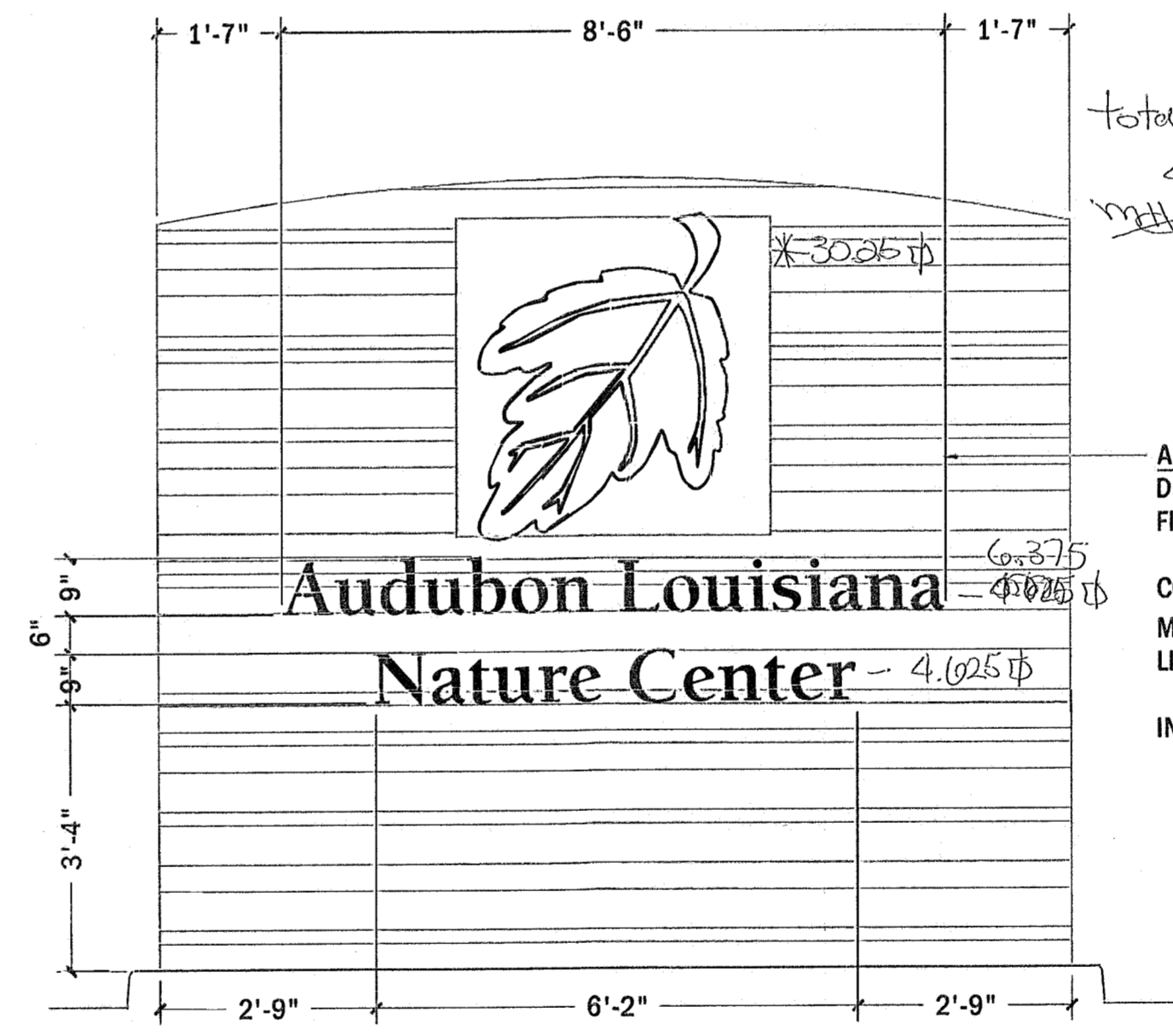
SCALE: 1/4" = 1' - 0"



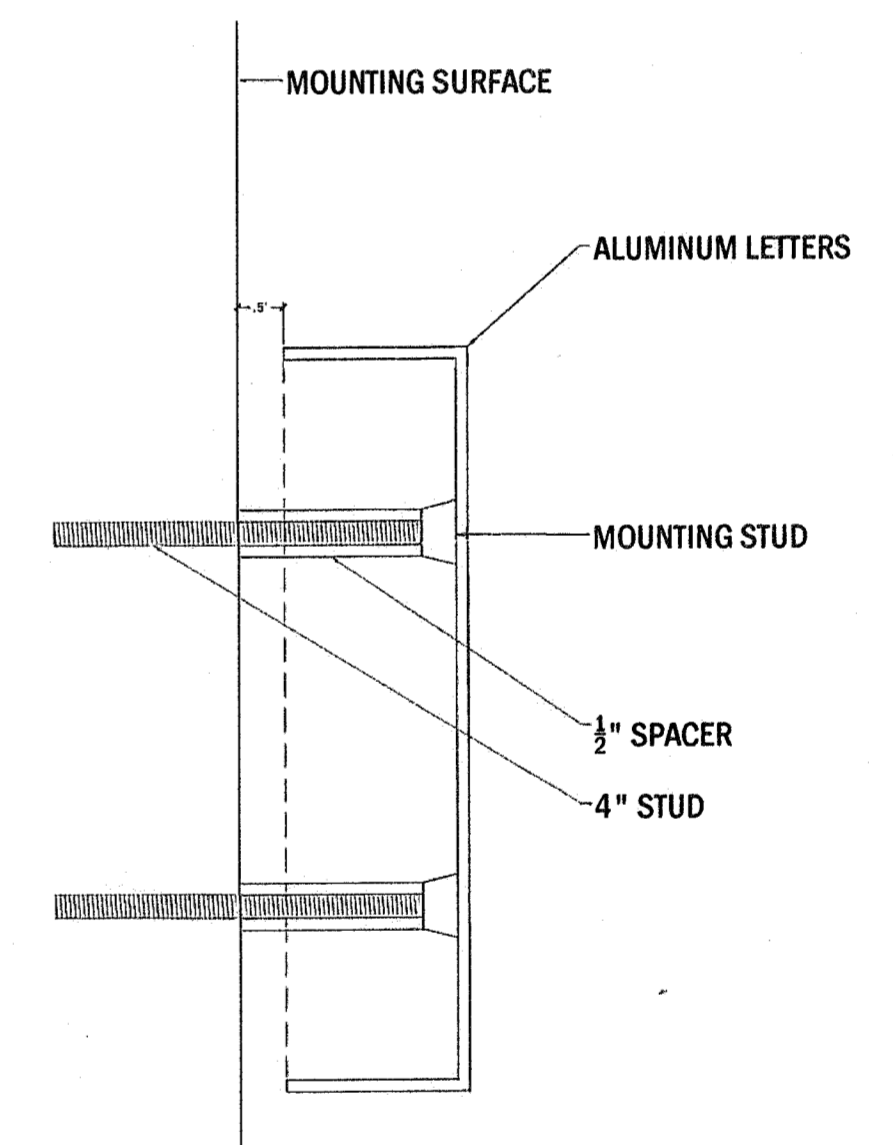
2 ENTRY GATE - ALUMINUM LOGO DETAIL
AD-1.0 ELEVATION SCALE: 1/2" = 1' - 0"



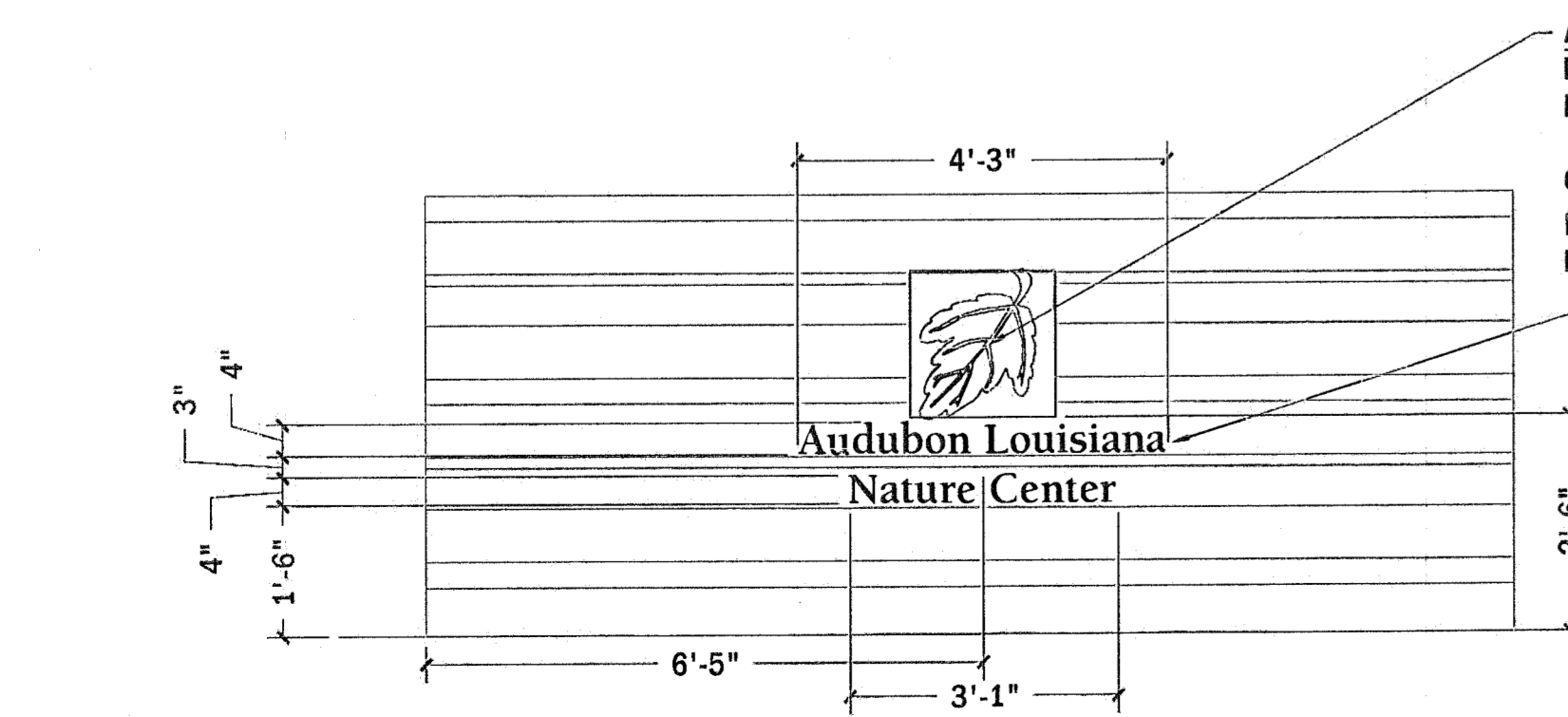
3 ENTRY GATE - ALUMINUM GRASS PLATE DETAIL
AD-1.0 ELEVATION SCALE: 1" = 1' - 0"



4 ENTRY GATE - ALUMINUM BRANDING DETAIL
AD-1.0 ELEVATION SCALE: 1/2" = 1' - 0"



5 MOUNTING DETAIL
AD-1.0 ELEVATION SCALE: 6" = 1' - 0"



6 BUS DROP-OFF - ALUMINUM BRANDING DETAIL
AD-1.0 ELEVATION SCALE: 1/2" = 1' - 0"

- ADDENDUM NOTES:**
- ALL GRASS PLATES TO BE CUT FROM 4'X10' 1/2" THICK PLATE ALUMINUM.
 - GRASS PLATES TO BE POWDER COATED BLACK MATTE FINISH.
 - INSTALLER TO PROVIDE COLOR CHIP SAMPLE FOR APPROVAL BY AUDUBON DESIGN STAFF.
 - ALUMINUM PLATE GRAPHIC FILES TO BE PROVIDED BY AUDUBON DESIGN STAFF AFTER AWARD OF CONTRACT.
 - ALUMINUM LOGO GRAPHIC FILES TO BE PROVIDED BY AUDUBON DESIGN STAFF AFTER AWARD OF CONTRACT.
 - ALUMINUM BRANDING GRAPHIC FILE TO BE PROVIDED BY AUDUBON DESIGN STAFF AFTER AWARD OF CONTRACT.

Audubon Nature Institute
6500 Magazine Street
New Orleans, Louisiana 70118

AUDUBON LOUISIANA NATURE CENTER
A Facility of the Audubon Nature Institute

Entrance Improvement Plan

ENTRY GATE ADDENDUM

PROJECT NUMBER	ALNC.001.1	DATE	12/22/2016	SCALE	VARIES
PROJECT MANAGER	KYLE P. MCGEEHEE				
REVISIONS					
1					
2					
3					
4					

L404

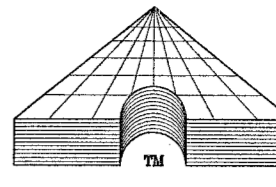
KRAVET

RICHARD S. KRAVET, AIA, NCARB

ARCHITECT

504-220-4619 www.kravetarchitects.com

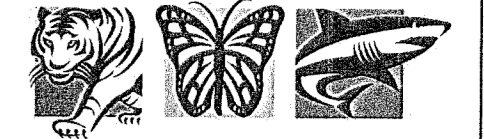
E:\Work\Projects\Audubon\001_04_General\AD-1.0_ENTRY_GATE_PLAN_Rev04.dwg, L404, Dec 22, 2016, 11:38:07am



ADG NEW ORLEANS, LLC.
ASSOCIATED DESIGN GROUP MEMBER COMPANY

1010 Common St.
Suite 2405
New Orleans, LA 70112
(504) 561-8333

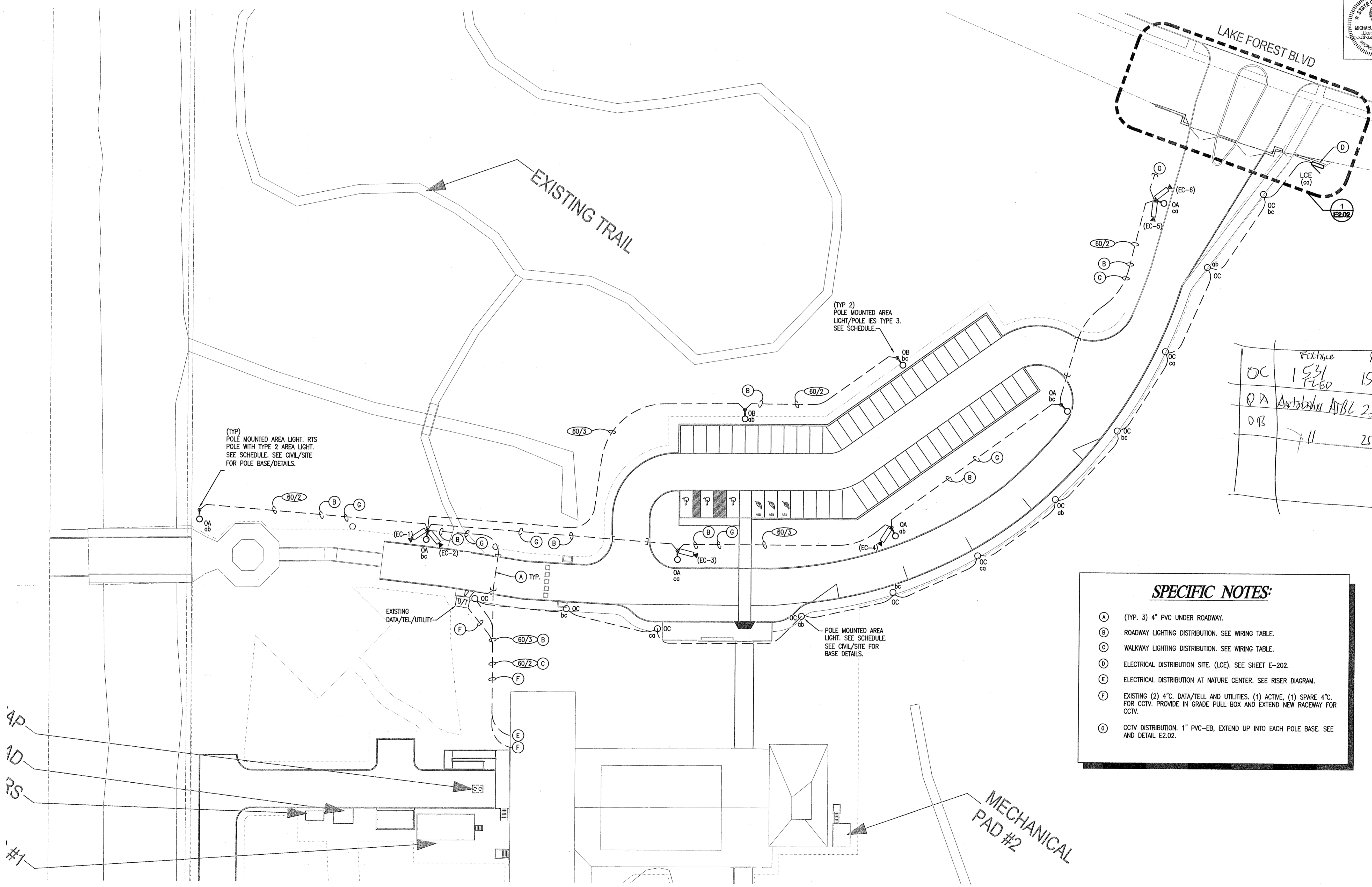
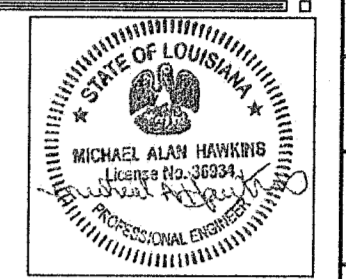
Project # 18118



Audubon Nature Institute
Celebrating the Wonders of Nature

DESIGN AND EXHIBITRY

OWNER	Audubon Nature Institute 6500 Magazine Street New Orleans, Louisiana 70118	
ARCHITECT		
CONTRACT		
LOCATION	AUDUBON LOUISIANA NATURE CENTER A Facility of the Audubon Nature Institute	
PROJECT	Entrance Improvement Plan	
DRAWING TITLE	ELECTRICAL SITE PLAN	
PROJECT NUMBER	DATE	SCALE
	10-07-2016	VARIES
PROJECT DESIGNER	PRINCIPAL DESIGNER	
MAH	MAH	
REVISIONS		
1		
2		
3		
4		



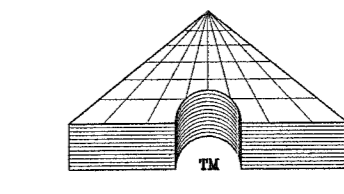
POLE BASES FOR AREA LIGHT ARE TO BE CONSTRUCTED PER CIVIL/SITE DETAILS AND SPECIFICATIONS. SEE SHEET C-XXX.

	Feature	Pole	
OC	1531 FLED	15'	Educational Facility
OA	Audubon ATBL	25'	
OB	711	25'	

SPECIFIC NOTES:

- (A) (TYP. 3) 4" PVC UNDER ROADWAY.
- (B) ROADWAY LIGHTING DISTRIBUTION. SEE WIRING TABLE.
- (C) WALKWAY LIGHTING DISTRIBUTION. SEE WIRING TABLE.
- (D) ELECTRICAL DISTRIBUTION SITE. (LCE). SEE SHEET E-202.
- (E) ELECTRICAL DISTRIBUTION AT NATURE CENTER. SEE RISER DIAGRAM.
- (F) EXISTING (2) 4" DATA/TELL AND UTILITIES. (1) ACTIVE, (1) SPARE 4" FOR CCTV. PROVIDE IN GRADE PULL BOX AND EXTEND NEW RACEWAY FOR CCTV.
- (G) CCTV DISTRIBUTION. 1" PVC-EB, EXTEND UP INTO EACH POLE BASE. SEE AND DETAIL E2.02.

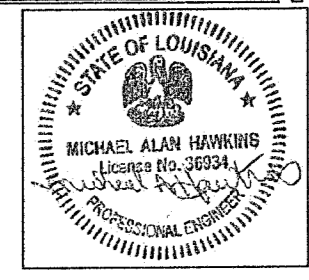
1 Electrical Site Plan
E2.01 1/32" = 1'-0"



ADG NEW ORLEANS, LLC.
ASSOCIATED DESIGN GROUP MEMBER COMPANY

1010 Common St.
Suite 2405
New Orleans, LA 70112
(504) 561-8333

Project # 16118



Audubon Nature Institute
Celebrating the Wonders of Nature

DESIGN AND EXHIBITRY

Audubon Nature Institute
6500 Magazine Street
New Orleans, Louisiana 70118

PROJECT: .
ARCH: .
CONTRACT: .
DATE: .

LOCATION:
AUDUBON LOUISIANA NATURE CENTER
A Facility of the Audubon Nature Institute

PROJECT:
Entrance Improvement Plan

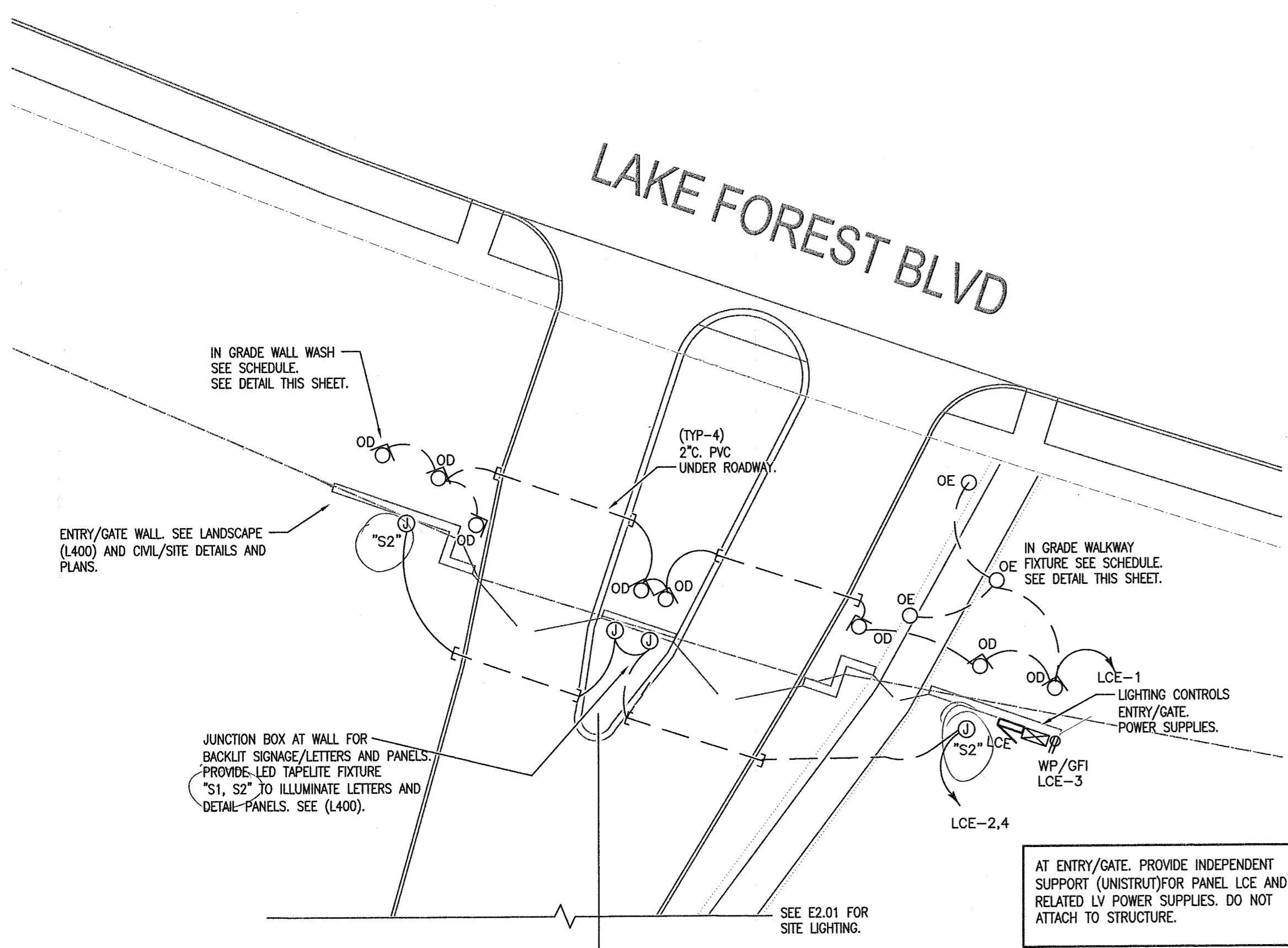
DRAWING TITLE

PROJECT NUMBER: . DATE: 10-07-2016 SCALE: VARIES

PROJECT DESIGNER: MAH PRINCIPAL DESIGNER: MAH

REVISIONS	DATE	DESCRIPTION
1		
2		
3		
4		

E2.02



1 Electrical (Entry Gate)
E2.02 1/16" = 1'-0"

Handwritten notes in a grid:

OE	022 Volt Lighting 5548	FFH GROUND
OE	VOLT LIGHTING II	5548

- ① FIXTURE SEE PLAN LEGEND FOR WATTAGE, BEAM SPREAD AND ACCESSORIES. 12 VOLTS, 35 WATT LED.
- ② FINISHED GRADE OR CONCRETE
- ③ LOW VOLTAGE CABLE, LEAVE 18" MIN. LOOP COILED BELOW FIXTURE FOR SERVICE
- ④ COURSE GRAVEL FOR DRAINAGE

