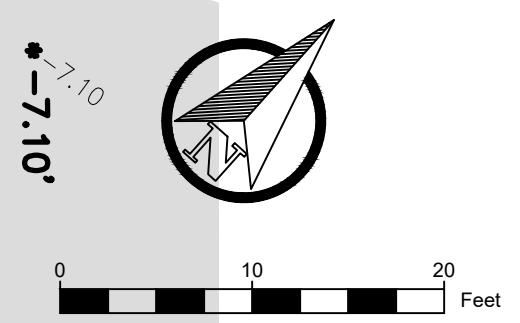
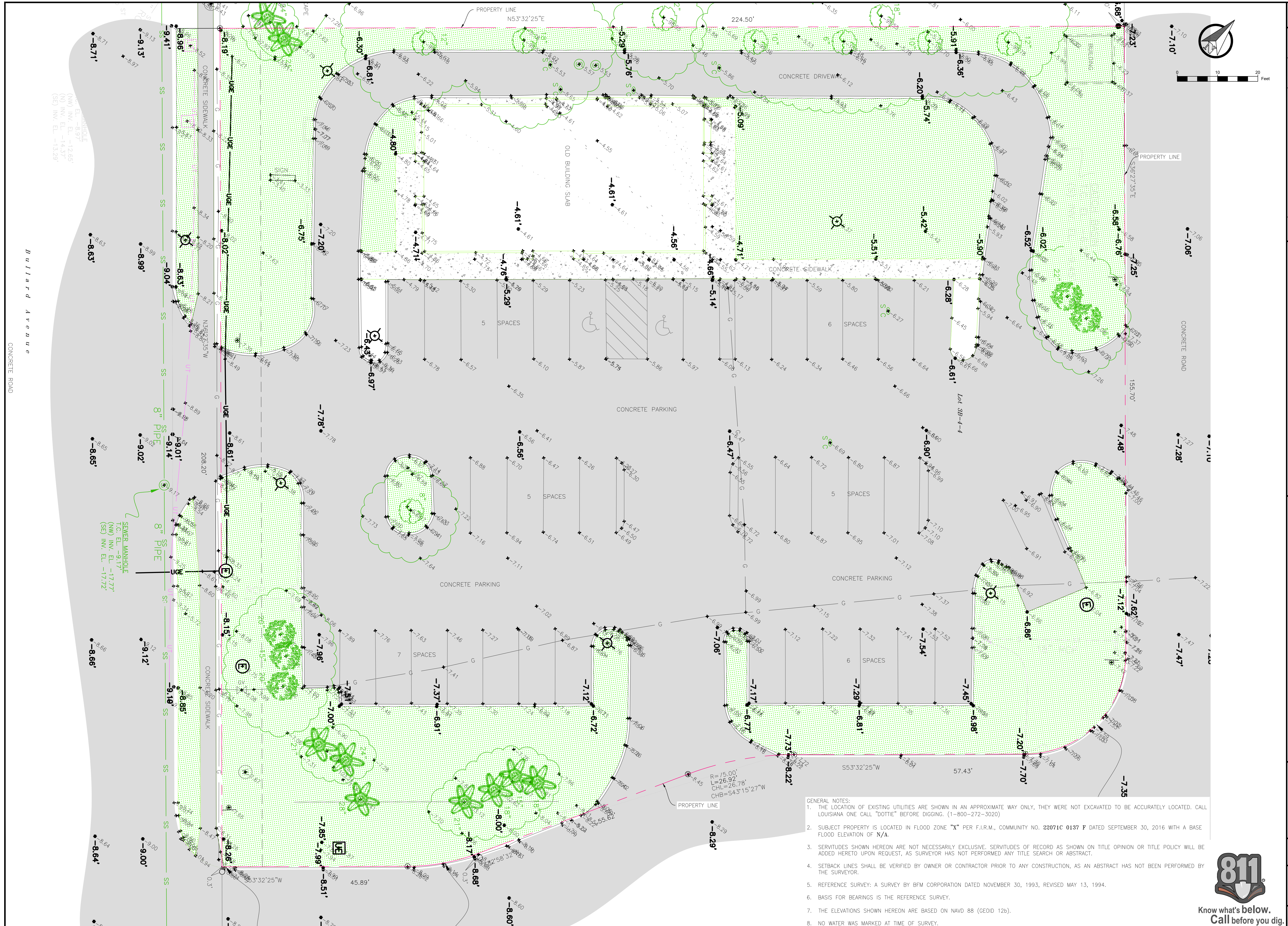


CONFIDENTIAL: THESE DESIGNS AND DRAWINGS ARE CONFIDENTIAL & ARE THE EXCLUSIVE PROPERTY OF EGen, LLC. NO COPY OR REPRODUCTION MAY BE MADE WITHOUT WRITTEN APPROVAL.



- GENERAL NOTES:
1. THE LOCATION OF EXISTING UTILITIES ARE SHOWN IN AN APPROXIMATE WAY ONLY, THEY WERE NOT EXCAVATED TO BE ACCURATELY LOCATED. CALL LOUISIANA ONE CALL "DOT" BEFORE DIGGING. (1-800-272-3020)
 2. SUBJECT PROPERTY IS LOCATED IN FLOOD ZONE "X" PER F.I.R.M., COMMUNITY NO. 22071C 0137 P DATED SEPTEMBER 30, 2016 WITH A BASE FLOOD ELEVATION OF X/A.
 3. SERVITUDES SHOWN HEREON ARE NOT NECESSARILY EXCLUSIVE. SERVITUDES OF RECORD AS SHOWN ON TITLE OPINION OR TITLE POLICY WILL BE ADDED HERETO UPON REQUEST, AS SURVEYOR HAS NOT PERFORMED ANY TITLE SEARCH OR ABSTRACT.
 4. SETBACK LINES SHALL BE VERIFIED BY OWNER OR CONTRACTOR PRIOR TO ANY CONSTRUCTION, AS AN ABSTRACT HAS NOT BEEN PERFORMED BY THE SURVEYOR.
 5. REFERENCE SURVEY: A SURVEY BY BFM CORPORATION DATED NOVEMBER 30, 1993, REVISED MAY 13, 1994.
 6. BASIS FOR BEARINGS IS THE REFERENCE SURVEY.
 7. THE ELEVATIONS SHOWN HEREON ARE BASED ON NAVD 88 (GEOID 12b).
 8. NO WATER WAS MARKED AT TIME OF SURVEY.

REV	description	approved	date
A	ISSUED FOR APPROVAL	AR	12/3/19

EGen
 Engineering Consultants—
 5500 Cypress St, Suite 10, West Monroe, LA 71291
 www.EGen.us
 (318)599-9316

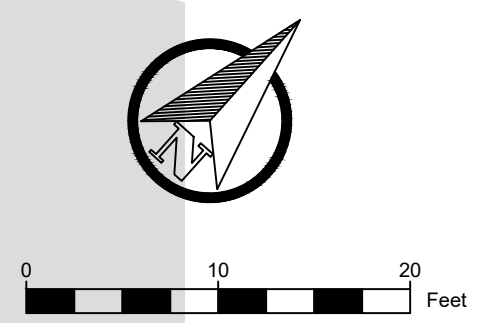
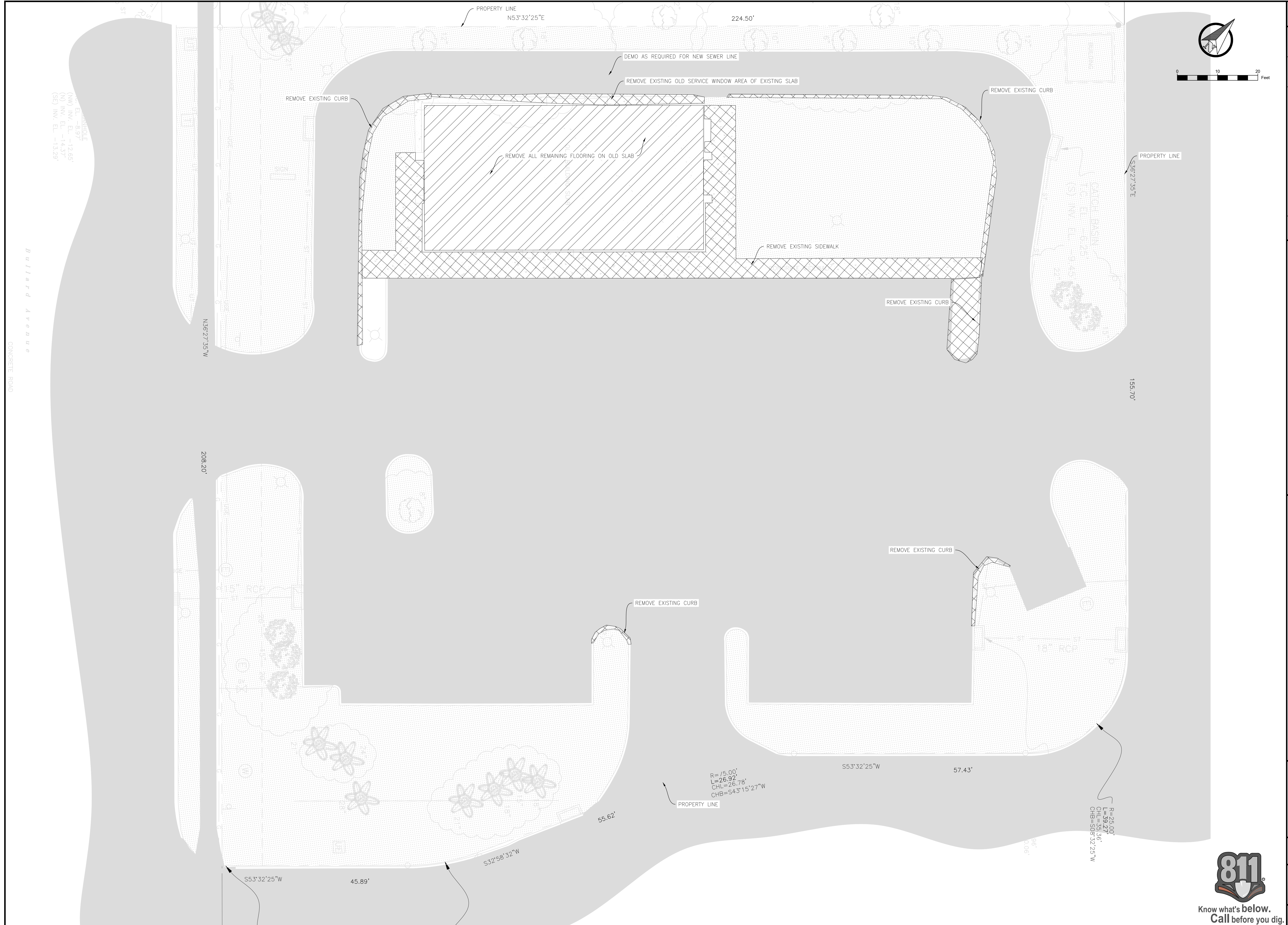
TACO BELL BULLARD BLVD
 GENERAL
 SITE DEVELOPMENT
 EXISTING SITE PLAN

Stamp
EGen JOB NO. 190705
SHEET C2.0
EX SITE PLAN



checked by AK
drawn by PW
firm # LA EF.006024
plot size ARCH D
12/03/19 08:28

CONFIDENTIAL THESE DESIGNS AND DRAWINGS ARE CONFIDENTIAL & ARE THE EXCLUSIVE PROPERTY OF: EGen, LLC NO COPY OR REPRODUCTION MAY BE MADE WITHOUT WRITTEN APPROVAL.



REV	description	approved	date
A	ISSUED FOR APPROVAL	AR	12/3/19

EGen
 -Engineering Consultants-
 5500 Cypress St, Suite 10, West Monroe, LA 71291
 www.EGen.us
 (318)599-9316

TACO BELL BULLARD BLVD
 GENERAL
 SITE DEVELOPMENT
 DEMOLITION SITE PLAN

Stamp

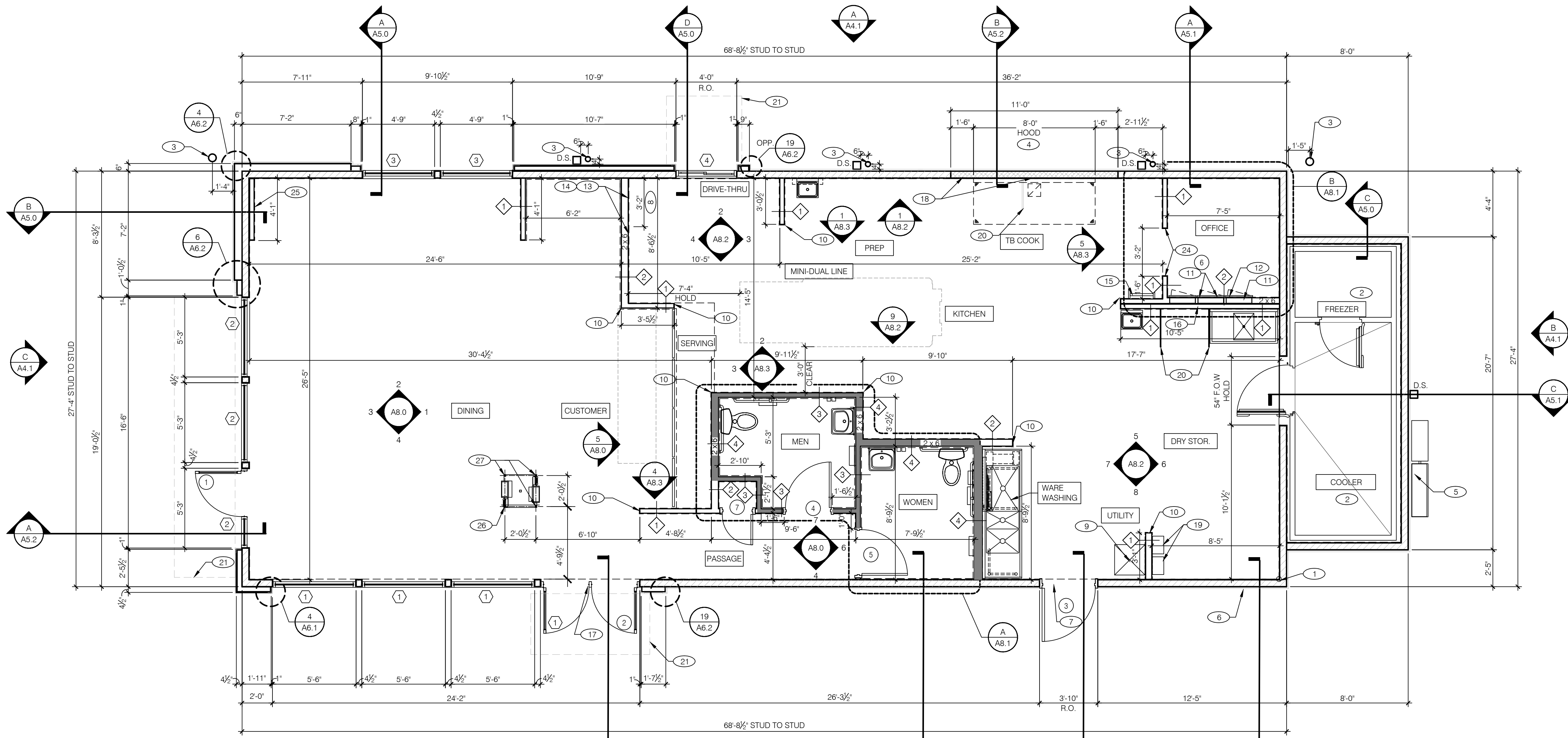
EGen JOB NO. 190705

SHEET C3.0

DEMO



drawn by P/W checked by AK revisions ARCH D
 firm #: LA EF.0006024



DESIGNER NOTE:
 REFER TO TACOBELPLANS.COM/LIBRARY/EQUIPMENT/TECHNOLOGY FOR 1:1 TEMPLATE OF KIOSK TOWER BASE FOR CONCRETE SLAB STUB-OUT LOCATION

FLOOR PLAN 1/4"=1'-0" **A**

WALL LEGEND		E	
	TYPICAL EXTERIOR WALL: 2x6 WD STUDS AT 16" O.C. W/ SHEATHING AS SCHEDULED (SEE STRUCT. DWGS.) AND R-19 KRAFT-FACED FIBERGLASS BATT INSULATION U.O.N. BLUESKIN VP WATER RESISTIVE AIR BARRIER MEMBRANE OVER SHEATHING.		INTERIOR SOUND-RATED WALL: TYPICAL INTERIOR WALL W/ 3-1/2" UNFACED FIBERGLASS BATT INSULATION.
	TYPICAL INTERIOR WALL: WD STUDS AT 16" O.C. AS INDICATED		HOOD WALL: EXTERIOR WALL WITH 20 GA. S.S. PANEL BEHIND HOOD. EXTEND MIN. 18" BEYOND END OF HOOD.
	1 2X4 WOOD STUDS		2 2X6 WOOD STUDS
	2 2X6 WOOD STUDS		
WALL HEIGHTS: ALL INTERIOR NON-BEARING WALLS GO TO BOTTOM OF TRUSS, U.O.N. REFER TO STRUCTURE.			
WALL SUBSTRATES:			
- DINING ROOM: 1/2" GYPSUM WALLBOARD FROM FLOOR SLAB TO 6' ABOVE CEILING HEIGHT U.O.N. SEE 6, 8 & 16 / A6.3. (NOTE: THE CEMENT BOARD SPECIFICATION IS DESIGNED TO ALLOW THE G.C. FLEXIBILITY.)			
- KITCHEN WALLS AND DINING ROOM CLOSET: 1/2" CEMENT WALLBOARD FROM T.O. SLAB TO 12" AFF. AT 12" AFF. USE 1/2" CDX PLYWOOD W/FRP SURFACE FINISH TO 6' ABOVE CEILING HEIGHT U.O.N. IF DOUBLE SIDED SHEAR WALL PLYWD IS SPECIFIED THE PLYWOOD SHALL BE CONTINUOUS FROM SILL PLATE TO TOP PLATE. SEE 4, & 11 / A6.3.			
- RESTROOM WALLS: 5/8" CEMENT WALLBOARD FROM T.O. SLAB OR T.O. CONCRETE CURB TO 48" A.F.F. WITH 5/8" HI-IMPACT BRAND XP WALLBOARD, TYPE X CORE FROM T.O. CEMENT BOARD TO 6' ABOVE CEILING HEIGHT U.O.N. NO SUBSTITUTIONS ALLOWED. FINISH AS SCHEDULED. SEE 11 (SIM), 12 / A6.3.			
- ALL OTHER FRAME WALL CONDITIONS: 1/2" CEMENT WALLBOARD FROM T.O. SLAB OR T.O. CONCRETE CURB TO 48" A.F.F., WITH 1/2" GYPSUM WALLBOARD FROM T.O. CEMENT BOARD TO 6' ABOVE CEILING HEIGHT U.O.N. FINISH AS SCHEDULED.			

FLOOR PLAN NOTES		D	
DIMENSIONS:			
A. ALL DIMENSIONS ARE TO FACE OF STUD U.O.N. REFER TO FOUNDATION PLAN FOR FACE OF CONC. DIMENSIONS.			
B. DIMENSIONS NOTED AS "CLEAR" OR "HOLD" ARE MIN. RECD. NET CLEARANCE FROM FACE OF WALL / WAINSCOT FINISH. VERIFY FINAL EQUIPMENT SIZES W/ VENDOR PRIOR TO INT. WALL FRAMING.			
WINDOWS / DOORS:			
A. SEE SHT. A1.1 FOR WINDOW TYPES AND DOOR SCHEDULE.			
B. ALL DOOR AND WINDOW OPENING DIMENSIONS ARE TO ROUGH OPENING.			
FINISH SUBSTRATES:			
A. PROVIDE 1/2" THICK CEMENTITIOUS BD. FROM FLOOR SLAB TO 12" A.F.F. MIN. IN LIEU OF GYP. BD. AT ALL WALLS EXCEPT SHEARWALL SURFACES, U.O.N.			
B. ALL JOINTS, GAPS OR SPACES LEADING TO ALL HOLLOW OR INACCESSIBLE SPACES SHALL BE SEALED WITH "NSF INTERNATIONAL" APPROVED SEALANTS.			
C. ALL BACK OF HOUSE AND OFFICE WALLS SHALL HAVE 1/2" CDX PLYWOOD SUBSTRATE, U.O.N.			
DECOR:			
A. SEE A2.0 FOR SEATING PLAN AND DETAILS.			
B. SEE A7.0 FOR FLOOR FINISHES.			
C. SEE A8.0 - A8.3 FOR WALL FINISHES.			
D. SEE A7.1 FOR CEILING FINISHES.			
GENERAL:			
A. PROVIDE THREE FIRE EXTINGUISHERS - (2) 10 lb. BC and (1) 10 lb. ABC - TO COMPLY WITH LOCAL FIRE CODE. LOCATE PER DIRECTION OF FIRE MARSHALL OR LOCAL AUTHORIZING AGENT.			
B. DRAWINGS ARE BASED UPON WOOD FRAMING. UTILIZATION OF METAL STUDS ON NON-BEARING INTERIOR PARTITIONS, BULKHEADS AND SOFFITS IS ACCEPTABLE.			
C. ALL ATTACHMENTS MADE THROUGH E.I.F.S. SHALL BE BUSHED TO PREVENT DAMAGE TO THE FINISH, PER 9/A6.2.			
D. ALL PENETRATIONS THROUGH E.I.F.S. SHALL BE SEALED USING MFRS. APPROVED METHOD.			

KEY NOTES		B	
	STARTING POINT. ALL SUB-TRADES SHALL USE THIS POINT AS A BEGINNING LAY-OUT (INSIDE FACE OF EXT. WALL STUDS).		ROOF LADDER SEE 4/A6.0
	NO FRP BEHIND (W-059) WALK-IN COOLER/FREEZER.		ADD SECOND 2X4 WALL ON KITCHEN SIDE.
	PIPE BOLLARD. SEE DETAIL 8/C1.0.		REMOVABLE ASTRAGAL FROM INSIDE ONLY.
	HOOD WALL, SEE WALL LEGEND.		600S162-54 METAL STUDS @ 16" O.C. W/ 1/2" CEMENT BOARD FULL HEIGHT ON INSIDE & 5/8" DENSGLASS SHEATHING ON OUTSIDE, TO EXISTING CONC. SLAB. ALL WALL FINISHES, VAPOR BARRIER AND SUBSTRATES TO MEET ASTM E-136 PER DBC 703.5.1 OR BETTER.
	ELECTRICAL MAIN SWITCH BOARD. REFER TO ELECT. DWGS.		INDICATES WATER HEATER LOCATION (INSULATION).
	CO2 FILL BOX LOCATION.		SPLASH GUARD. SEE DETAIL 9/A6.3.
	TILE TO METAL THRESHOLD.		LINE OF CANOPY ABOVE
	KEEP CLEAR FOR UTILITIES & SYRUP LINES. SEE DETAIL 14 & 19/A6.4 FOR STUD LAYOUT REQUIREMENTS.		NOT USED
	MOP SINK. REFER TO SHEET A2.0 & A2.1.		NOT USED
	S.S. CORNER GUARD / WALL CAP (TM-2), TYP. ALL CORNERS IN BACK-OF-HOUSE FROM REAR WALL TO THE KITCHEN SIDE OF THE SERVICE COUNTER. SEE DETAIL 19/A6.3.		CASED DOOR OPENING
	ELECT. PANELS RECESSED IN 2x6 WALL.		FUR OUT WALL AS INDICATED WITH 2X4 WOOD STUDS AT 16" O.C.
	LIGHTING CONTROL PANEL RECESSED. REFER TO ELECT. DWGS.		KIOSK POWER STUB LOCATION TO RUN WITHIN LEG OF KIOSK
	SYRUP LINE CHASE (ABOVE). SEE DETAIL 19/A6.4.		KIOSK DATA STUB LOCATION TO RUN WITHIN LEG OF KIOSK
	14"x14" HORIZONTAL OPENING FOR SYRUP TUBES. COORDINATE WALL PENETRATION WITH COUNTER INSTALLER. SEAL CHASE TO COUNTER. SEE 11/A6.4.		



HAROLD DANIEL HUTTER III
 LA REG NO. 35992

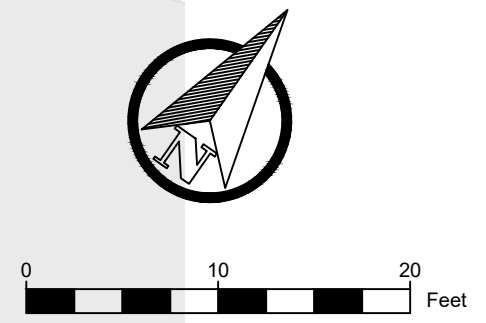
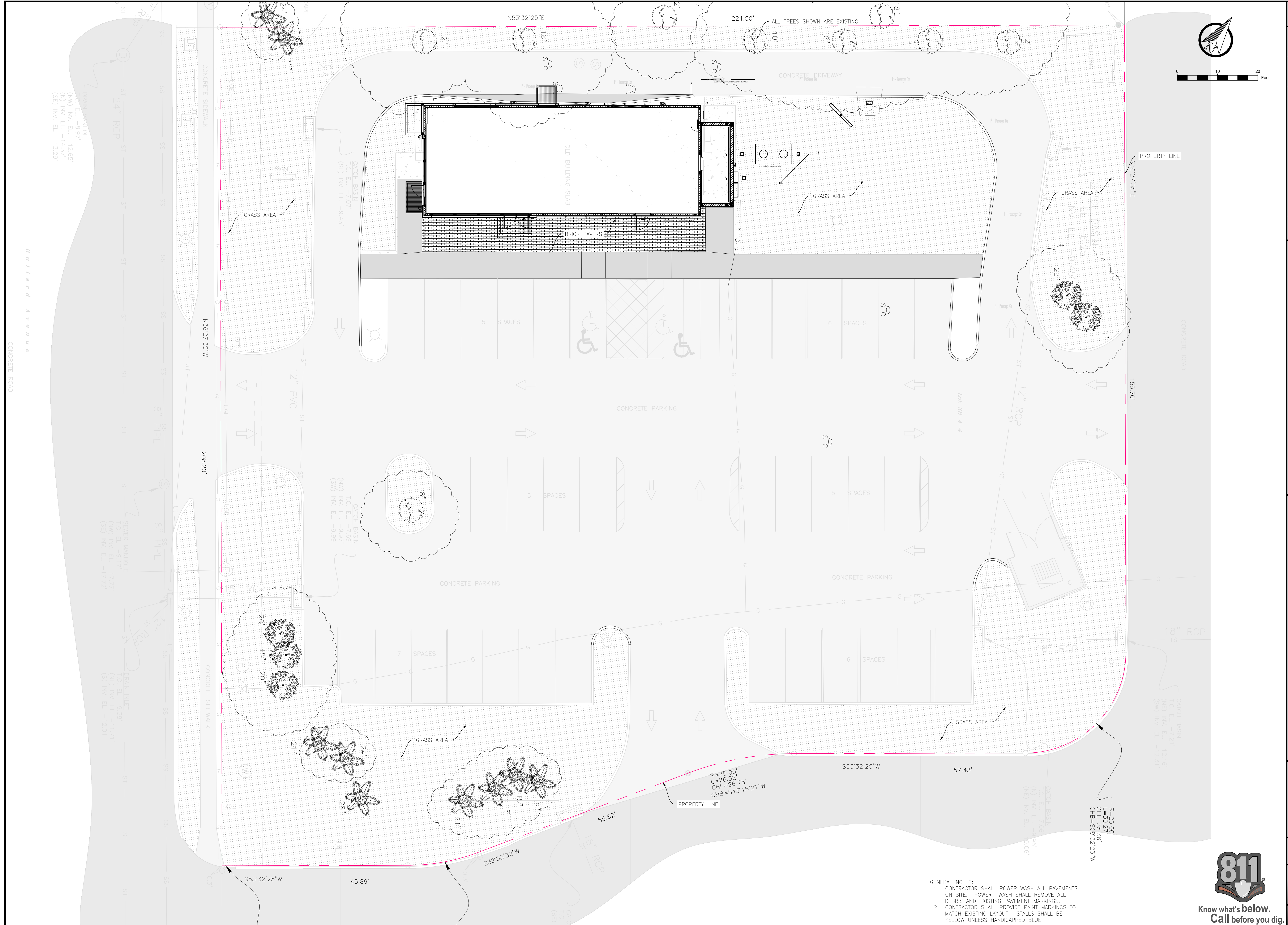
CONTRACT DATE: XX-XX-XX
 BUILDING TYPE: EXPLORER MED40
 PLAN VERSION: MARCH 2018
 SITE NUMBER: 314160
 STORE NUMBER:
 LIS PROJECT: 2019-102

TACO BELL
 6007 BULLARD AVE.
 NEW ORLEANS, LA 70128



FLOOR PLAN
A1.0

CONFIDENTIAL: THESE DESIGNS AND DRAWINGS ARE CONFIDENTIAL & ARE THE EXCLUSIVE PROPERTY OF: EGen, LLC NO COPY OR REPRODUCTION MAY BE MADE WITHOUT WRITTEN APPROVAL.



- GENERAL NOTES:
1. CONTRACTOR SHALL POWER WASH ALL PAVEMENTS ON SITE. POWER WASH SHALL REMOVE ALL DEBRIS AND EXISTING PAVEMENT MARKINGS.
 2. CONTRACTOR SHALL PROVIDE PAINT MARKINGS TO MATCH EXISTING LAYOUT. STALLS SHALL BE YELLOW UNLESS HANDICAPPED BLUE.



REV	description	approved	date
0	ISSUED FOR CONSTRUCTION	AR	3/2/20

EGen
 -Engineering Consultants-
 5500 Cypress St, Suite 10, West Monroe, LA 71291
 www.EGen.us
 (318)599-9316

TACO BELL BULLARD BLVD
 GENERAL
 SITE DEVELOPMENT
 LANDSCAPING

EGen JOB NO.	190705
SHEET	C4.5
LANDSCAPING	

drawn by P/W checked by AR' plot size ARCH D