

IRIS OF MEMORY

ARTIST | William Nemitoff

CONCEPT NARRATIVE

Artistic Vision

A common memorial gift, flowers symbolize the fragility and beauty of life. As a tribute to the memory of Deborah Vorhoff, I propose a permanent interactive flower installation to celebrate her artistic spirit, curiosity, and creative presence along the Lafitte Greenway for generations to come.

Iris of Memory takes the flower, a traditional and impermanent memorial symbol, and reverses its aging process. In contrast to the temporary nature of a delicate flower, the installation is created out of durable metal. As Greenway visitors draw closer to the flower, the light within glows brighter, providing a visual indication of the power of memory to connect us to life, even if their presence is no longer physically with us. This effect builds viewer curiosity and encourages engagement.

Functionally, *Iris of Memory* provides lighting along the Greenway path. The leaves of the flowers visually fold down to provide seating, and serve as a place to quietly reflect or engage with community. On the larger site, the installation aims to activate the space in front of the former Brake Tag Station and be a catalyst for the future development of a contemplative green space.

As a public work, this installation juxtaposes the Greenway space. Through the combination of a botanical-inspired design, industrial architectural materials, and artificial lighting, the piece connects to the natural environment and extends to the city space beyond. This glowing bouquet of irises will be a representation of the urban greenspace and serve as an intentional memorial to Deborah Vorhoff.

Process - Site

While the future program of the area between N. Jefferson Davis Pkwy and the newly renovated community center is uncertain, the 2013 Lafitte Greenway Masterplan recommends the available site be a contemplative space with a community garden in front of the former Brake Tag Station. One proposed use of the new community center is as a new venue for the Crescent City Farmers Market.

The site lies between the new community center and Michel Varisco's piece, "Turning: Prayer Wheels for the Mississippi River", at the intersection of N Jefferson Davis Pkwy, the Lafitte Greenway, and Bayou St. John

Process - Form

Flower Selection:

The form of the flower is inspired by the Louisiana Iris, native to the coastal wetlands, and planted nearby in the Greenway bioswale. With this association, I hope to draw attention to the beauty of native plants and the need to protect our local and global environment.

Pattern:

The patterns on the petals and leaves reference the bold, playful patterns evident in the work of Deborah Vorhoff. The flowers will cast those patterns when illuminated, like a memory onto the surrounding trees and landscape. This allows the piece to activate a space larger than its physical footprint.

Material:

The structure will be made from hot-dip galvanized steel, which has superior resistance to rust and corrosion in harsh environments. It is also a durable architectural material. The spangled texture inherent to galvanizing adds visual interest and speaks to the industrial history of the site. The choice of a metallic finish for *Iris of Memory* is based not only in durability, but also is nod to Varisco's piece, made of stainless steel. Thematically, both pieces address Louisiana ecology and project hope for our environment.

CONCEPT NARRATIVE

Site Considerations

The site poses a challenge due to the current lack of program. In siting the piece, a number of factors and assumptions were taken into consideration:

- A. Visibility from Greenway and sidewalks**
This is of high importance, as the artwork is meant to activate the unprogrammed space and provide multi-modal experiences along the Greenway. This takes into account the future growth of the Shumard Oaks trees planted along the trail.
- B. Accessibility from Greenway, sidewalks, and nearby pedestrian nodes**
The artwork should be inviting and easily accessible from the adjacent area, connecting the nodes and holding the space.
- C. Sound protection and privacy from traffic on N Jefferson Davis Pkwy**
Also of importance due to the intention for a space of gathering and reflection.
- C. Beacon and place-making**
The artwork should activate the entire site as much as possible.
- D. Shade**
An optimal site will have existing protection from the sun to make the space more inviting during the day.
- E. Concerns about vehicle traffic on site**
Currently, non-construction vehicles use the site as a passthrough. The specific siting should discourage this, and avoid being directly in the way of any vehicles that move through the site. This will be a concern until all driveways onto the site are removed.
- F. Future use**
Ideally, the entire site will be resurfaced with grass and landscaping, providing a shaded, quiet public space. Its adjacency to the new community center makes it ideal as an outdoor gathering space.

Site Selection

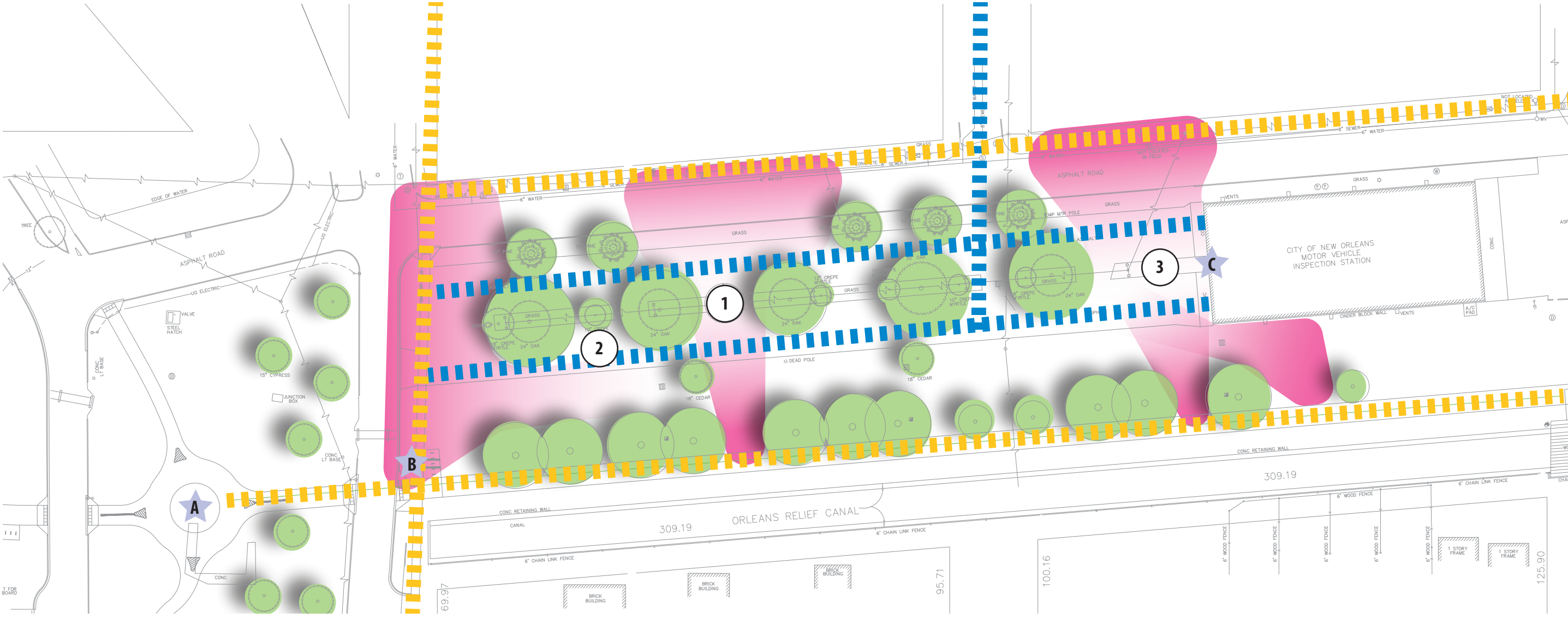
While a number of possible options were considered, the selected site is centered on the site between the oaks.





- Ideal option with the current use and conditions.
- Center on existing grass strip to increase green space, increasing the visual footprint to include the entire site and reducing demolition required for the foundation.
- Good amount of shade.
- Future visibility once Shumard oak trees are mature.
- In line with the live oaks to provide visibility and buffer noise of parkway.
- Central hub on the site to inform future activation and development.

Future Improvements

Site could be improved by additional grassy space and two additional pine trees planted along Lafitte Street to fully protect the site. Trees could be planted along N Jefferson Davis Pkwy to create a sound and visual barrier from the road and the driveway could be removed to prevent vehicle traffic. Additional leaf benches and smaller blooms could populate the entire space to create a Garden of Memory.

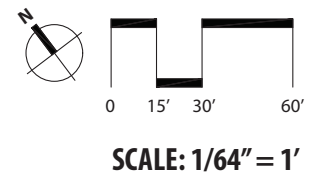
SITE DIAGRAM | Access + Sight Lines + Primary Nodes



-  CURRENT FOOT TRAFFIC
-  PROJECTED FOOT TRAFFIC
-  VISIBILITY / PRIVACY
-  SITING OPTIONS

 SIGNIFICANT PEDESTRIAN NODES

- A:** *Turning: Prayer Wheels for the Mississippi River*, Michel Varisco, 2016
- B:** Lafitte Greenway Trailhead and Bike Rack
- C:** Lafitte Greenway Shelter (Former Brake Tag Station)



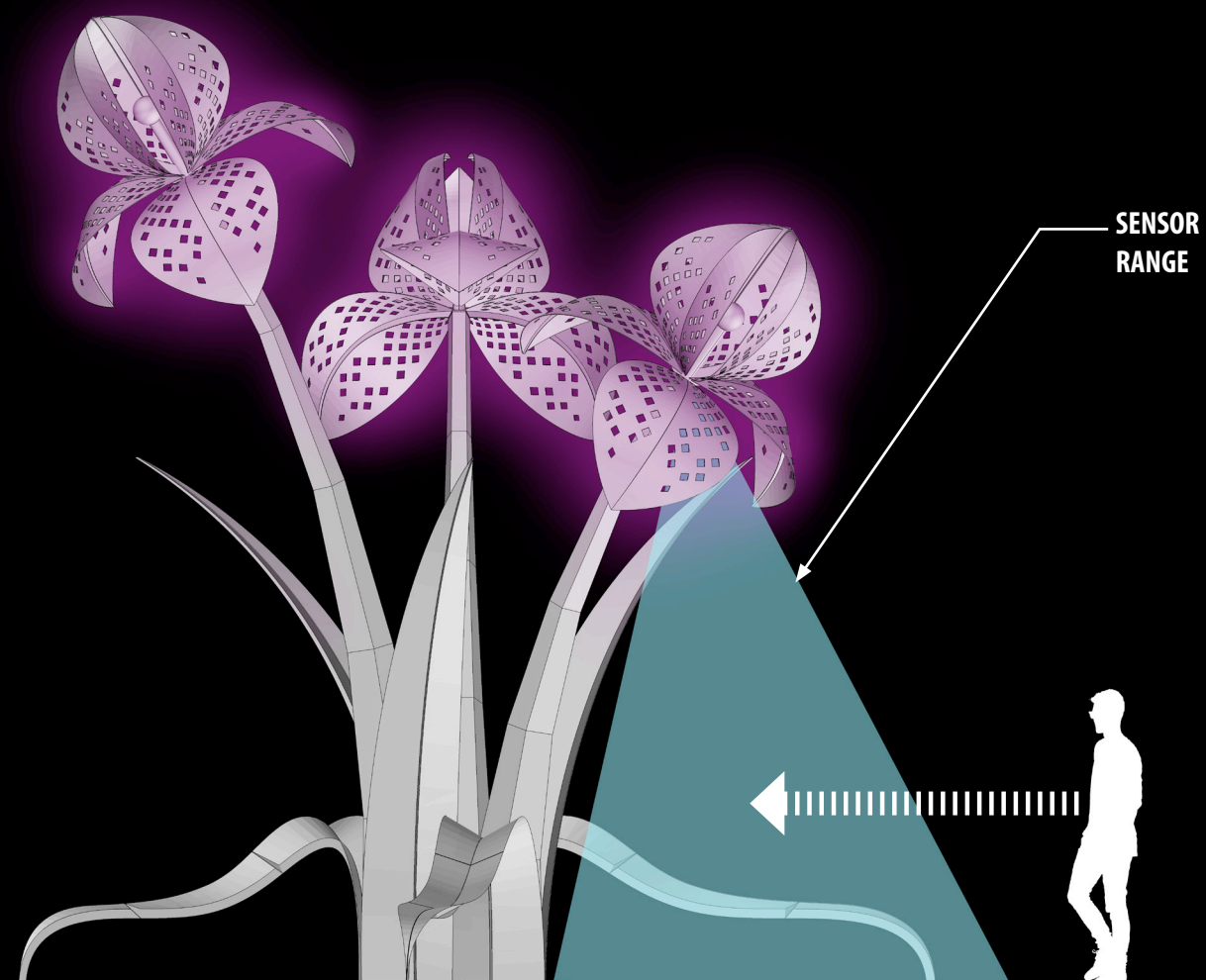


RENDERING | Day

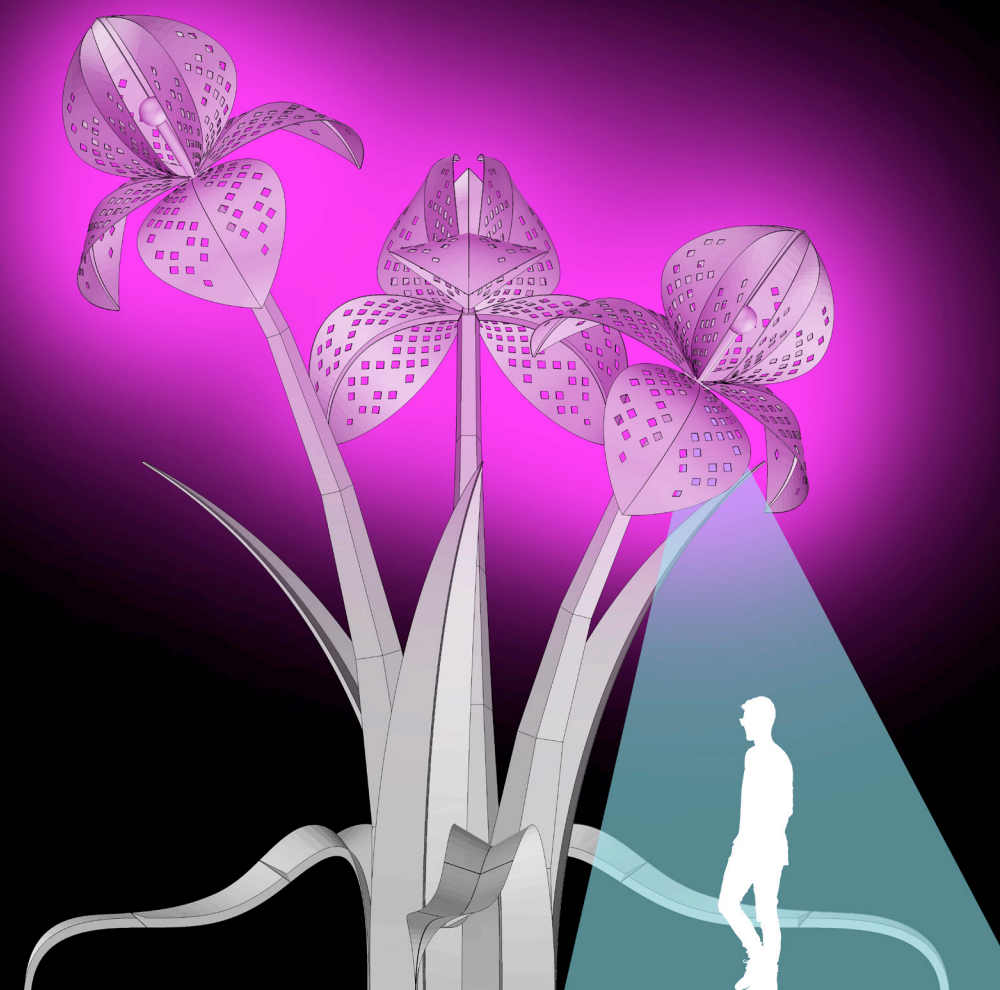
© 2019 WILLIAM NEMITOFF



INACTIVE

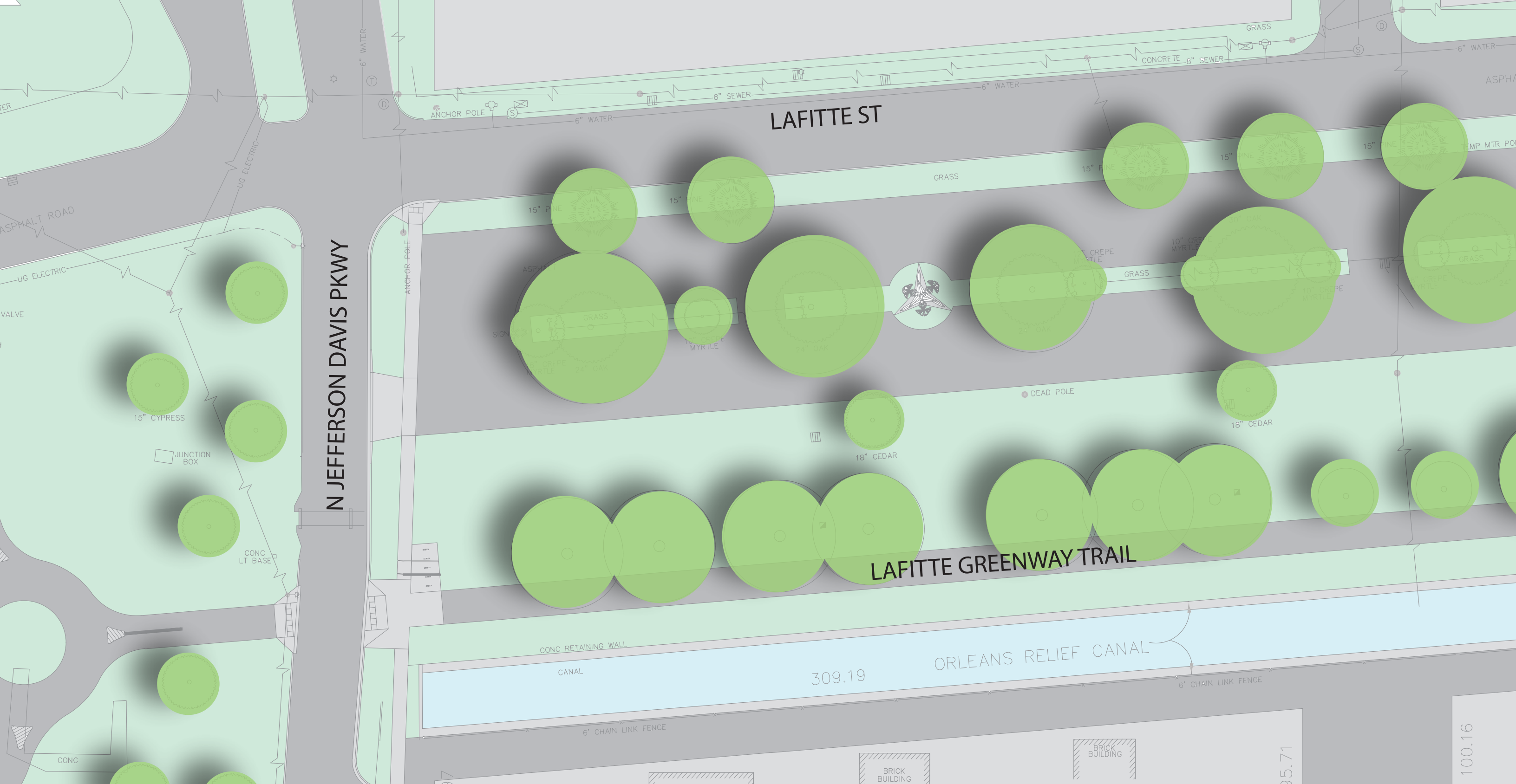


ACTIVE

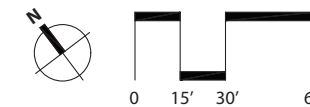


CONCEPTUAL DIAGRAM | Not to Scale

RGB LED lighting will cycle through a preprogrammed routine. Motion sensors at each flower trigger the lighting to increase when someone comes within its range. The lights stay on for 10 minutes after the sensors turn off, leaving a fleeting memory behind.

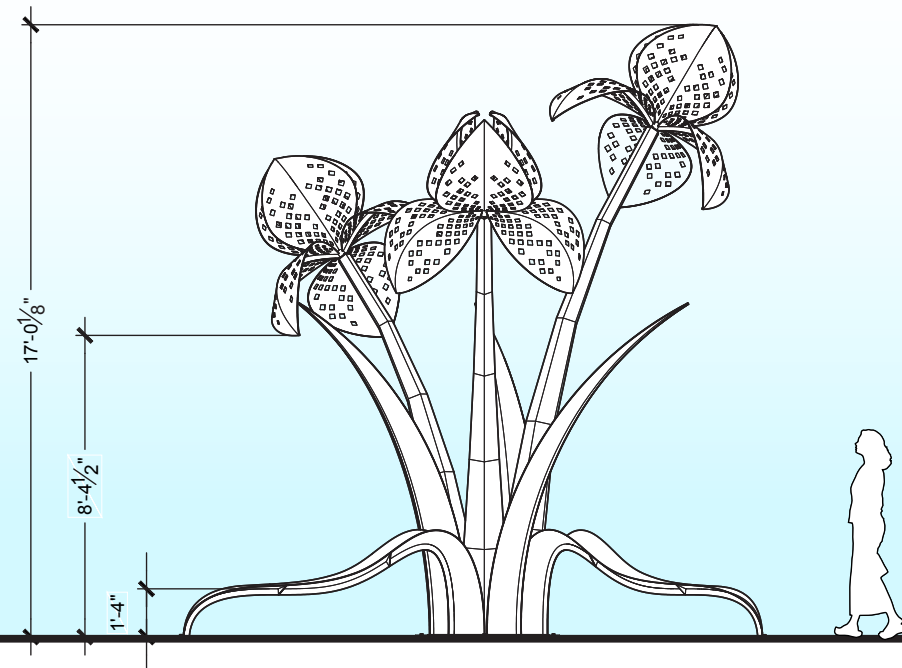
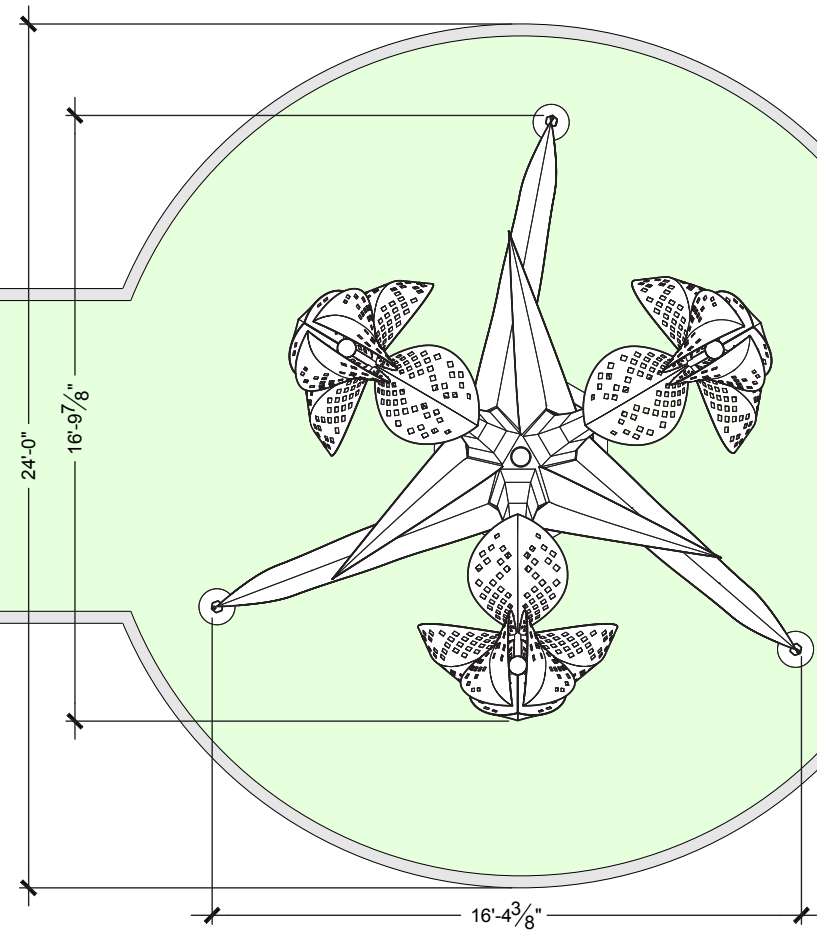


SITE PLAN | Scale: 1/32" = 1'



© 2019 WILLIAM NEMITOFF

PLAN | Scale: 3/16" = 1'



ELEVATION | Scale: 3/16" = 1'

MATERIALS

RGB LED LIGHTS

Led lights require far less energy than traditional lighting, reducing the carbon footprint of the piece. These will be controlled by motion sensors and an arduino housed in a waterproof box.



CONCRETE

The structural concrete footing doubles as a design feature, emphasizing the leaves reaching out into the city.



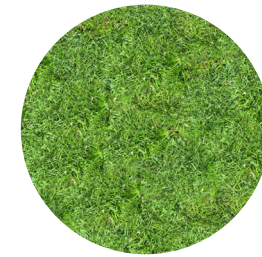
GALVANIZED STEEL

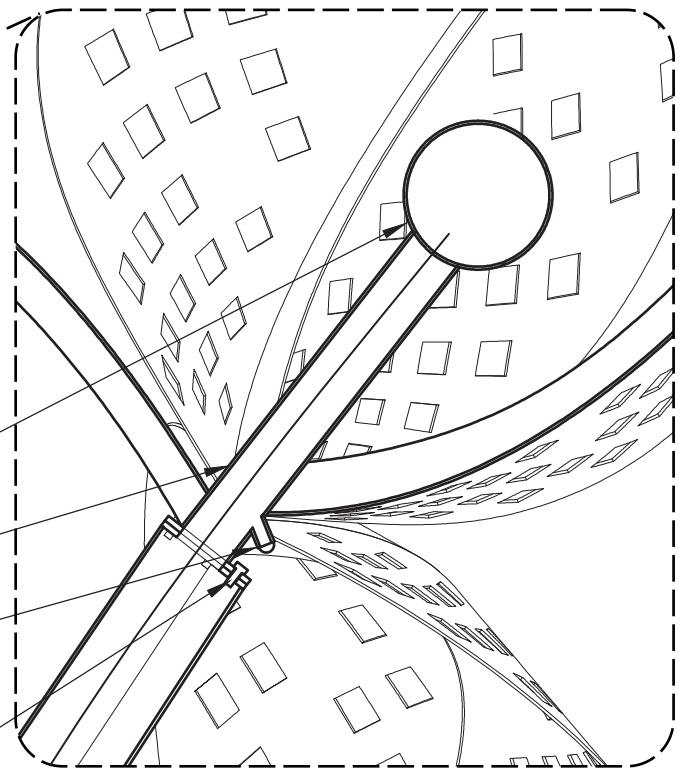
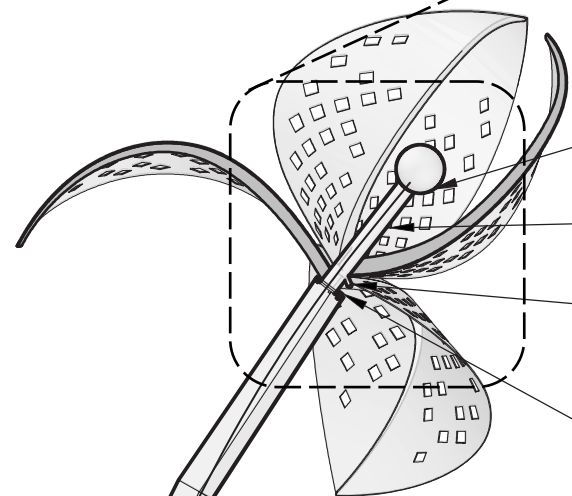
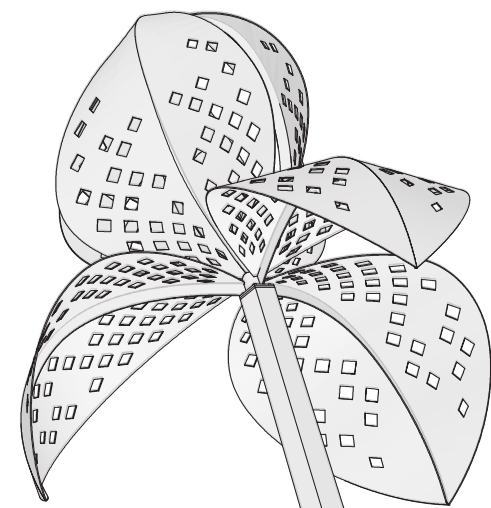
Hot-dip galvanized steel has superior resistance to rust and corrosion in harsh environments and is a durable coating. The spangled texture is desirable to add visual interest.



GRASS

Landscaping becomes a part of the work, allowing it's boundaries to visually extend across the site.





RGB LED LIGHTING

2" SCH 40 PIPE

MOTION SENSOR

Ø3/8" SS BOLTED CONNECTION, TYP.

DETAIL | Scale: 1-1/2" = 1'

PLASMA CUT STEEL
HOT-DIP GALVANIZED, TYP.

CABLE PATH

RGB LED LIGHTING

HOT-DIP GALV. 1/2" ANCHOR
BOLT W/ CAP NUT, TYP.

CONCRETE FOOTING

ELECTRICAL CONDUIT

WATERPROOF IN-GROUND
ELECTRICAL BOX WITH LIGHTING
BRAIN + TIE-IN TO CITY POWER



SECTION | Scale: 1/2" = 1'



RENDERING | Day

© 2019 WILLIAM NEMITOFF