

GREATER ST. STEPHEN MINISTRIES ELJEANNETTE WHITE HELPING HANDS PARENT CHILD CENTER - PRICING SET



VICINITY MAP



PROJECT LOCATION
9661 LAKE FOREST BLVD
NEW ORLEANS, LA 70127

PROJECT NORTH

PROJECT DATA

PROJECT DESCRIPTION:

NEW BUILDING WITH OFFICES AND ASSEMBLY SPACES AND ASSOCIATED SUPPORT SPACES. SPACE INCLUDES NEW FOUNDATION, WALLS, ROOF, CEILINGS, MILLWORK & FINISHES. ALL NEW MECHANICAL, PLUMBING & ELECTRICAL EQUIPMENT & FURNISHINGS.

OWNER:

GREATER ST. STEPHEN MINISTRIES
5600 READ BOULEVARD
NEW ORLEANS, LA 70127
CONTACT: COURTNEY ELZEY
PHONE (504) 296-4144

ARCHITECT & MEP ENGINEERING:

WDG ARCHITECTS ENGINEERS
821 BARONNE STREET
NEW ORLEANS, LA 70113
CONTACT: SHANNON FRENCH, AIA
PHONE (504) 754-5269

STRUCTURAL & CIVIL ENGINEERING:

MORPHY MAKOFSKY, INC.
336 N JEFFERSON DAVIS PKWY
NEW ORLEANS, LA 70119
CONTACT: STEPHAN BERNICK, P.E.
PHONE (504) 488-1317

LANDSCAPE ARCHITECT:

EVANS + LIGHTER LANDSCAPE ARCHITECTURE
742 JEFFERSON AVENUE
NEW ORLEANS, LA 70115
CONTACT: JOSEPH EVANS
PHONE (504) 256-2733

SHEET INDEX

SHEET NUMBER	SHEET NAME
G000	COVER SHEET
G101	GENERAL NOTES
G102	LIFE SAFETY PLAN
C001	DEMOLITION, EROSION AND SEDIMENT CONTROL PLAN
C002	DEMOLITION, EROSION AND SEDIMENT CONTROL PLAN
C100	SITE PLAN
C101	GRADING PLAN
C102	DRAINAGE PLAN
C103	UTILITIES PLAN
C104	PAVING PLAN
C200	CIVIL DETAILS
C201	CIVIL DETAILS
C300	S&WB STANDARD SPECS FOR INSTALLATION OF DRAIN MAINS
C301	S&WB STANDARD SPECS FOR INSTALLATION OF WATER MAINS
C302	S&WB STANDARD SPECS FOR INSTALLATION OF SEWER MAINS
C303	SEWERAGE AND WATER BOARD STANDARD DETAILS
C304	S&WB AND NEW ORLEANS DEPT. OF PUBLIC WORKS DETAILS
L101	EXISTING DRAINAGE PLAN
L102	EXISTING SURFACES PLAN
L103	PRE-DEVELOPMENT DRAINAGE AREA PLAN
L104	POST-DEVELOPMENT SURFACES PLAN
L105	PROPOSED DRAINAGE AND STORMWATER PLAN
L106	LANDSCAPE PLAN
L107	LANDSCAPE DETAILS
S001	GENERAL NOTES
S002	SECTIONS AND DETAILS
S003	SCHEDULES, SECTIONS AND DETAILS
S101	FOUNDATION & FIRST FLOOR FRAMING PLAN
S102	MEZZANINE & LOW ROOF FRAMING PLAN
S103	ROOF FRAMING PLAN
S201	SECTIONS AND DETAILS
S501	ELEVATIONS, BRACING, SECTIONS AND DETAILS
S502	BRACING SECTIONS AND DETAILS
ASD101	DEMOLITION SITE PLAN
AS101	ARCHITECTURAL SITE PLAN
AS102	ENLARGED SITE PLAN AND DETAILS
AS103	ENLARGED SITE PLAN AND DETAILS
A100	SLAB PLAN
A101	FLOOR PLAN, LEVEL 1
A102	DIMENSION PLAN
A103	FF&E FLOOR PLAN
A104	SIGNAGE PLAN
A105	REFLECTED CEILING PLAN, LEVEL 1
A106	ROOF PLAN
A201	ELEVATIONS, EXTERIOR
A301	BUILDING SECTIONS
A321	SECTION DETAILS
A322	SECTION DETAILS
A323	SECTION DETAILS
A331	TYPICAL PLAN DETAILS
A332	TYPICAL PLAN DETAILS
A401	INTERIOR ELEVATIONS
A402	INTERIOR ELEVATIONS
A403	INTERIOR ELEVATIONS
A404	INTERIOR ELEVATIONS
A405	ENLARGED PLANS / ELEVATIONS
A406	ENLARGED PLANS / ELEVATIONS
A423	STAIR DETAILS
A531	CEILING DETAILS
A541	MILLWORK DETAILS
A601	DOOR AND OPENING SCHEDULE
A602	WINDOW OPENINGS AND ELEVATIONS
A603	SCHEDULES
M000	MECHANICAL NOTES AND LEGENDS
M001	MECHANICAL SCHEDULES AND DETAILS
M201	LEVEL 1 - MECHANICAL PLAN
M301	HVAC CONTROLS AND SEQUENCE OF OPERATIONS
M601	MECHANICAL DETAILS
P000	PLUMBING NOTES AND LEGENDS
P001	PLUMBING SCHEDULES
P201	LEVEL 1 - WASTE AND VENT PLAN
P301	LEVEL 1 - DOMESTIC WATER PIPING PLAN
P401	PLUMBING RISER DIAGRAM
P501	PLUMBING DETAILS
E000	ELECTRICAL NOTES AND LEGENDS
E101	ELECTRICAL SITE PLAN
E201	FLOOR PLAN - LIGHTING
E301	FLOOR PLAN - POWER
E302	MECH POWER PLAN
E401	FLOOR PLAN - FIRE ALARM
E500	POWER RISER DIAGRAM
E501	PANEL SCHEDULES
E601	ELECTRICAL DETAILS
FP201	LEVEL 1 - FIRE PROTECTION PIPING PLAN
-	SURVEY - FOR REFERENCE ONLY

GREATER ST. STEPHEN MINISTRIES
ELJEANNETTE WHITE HELPING HANDS PARENT
CHILD CENTER - PRICING SET

9661 LAKE FOREST BLVD
NEW ORLEANS, LA 70127

THE DESIGN CONCEPTS REPRESENTED IN THIS DOCUMENT ARE SPECIFICALLY FOR THIS PROJECT. INFORMATION CONTAINED HEREIN IS THE SOLE PROPERTY OF WDG ARCHITECTS ENGINEERS AND SHALL NOT BE TRANSFERRED TO ANY OTHER DOCUMENTS, USED FOR ANY OTHER PURPOSE OR BE CONVEYED TO THIRD PARTIES IN ANY FORM WHATSOEVER WITHOUT THE EXPRESS WRITTEN CONSENT OF WDG ARCHITECTS ENGINEERS.

11/22/2019 BID SET

MARK	DATE	DESCRIPTION

SHEET ISSUED: 11/22/19

WDG PROJECT NO.: 15-018

© 2017 BY:
WDG ARCHITECTS ENGINEERS, LLC.

SHEET TITLE:

COVER SHEET

SHEET NUMBER:

G000

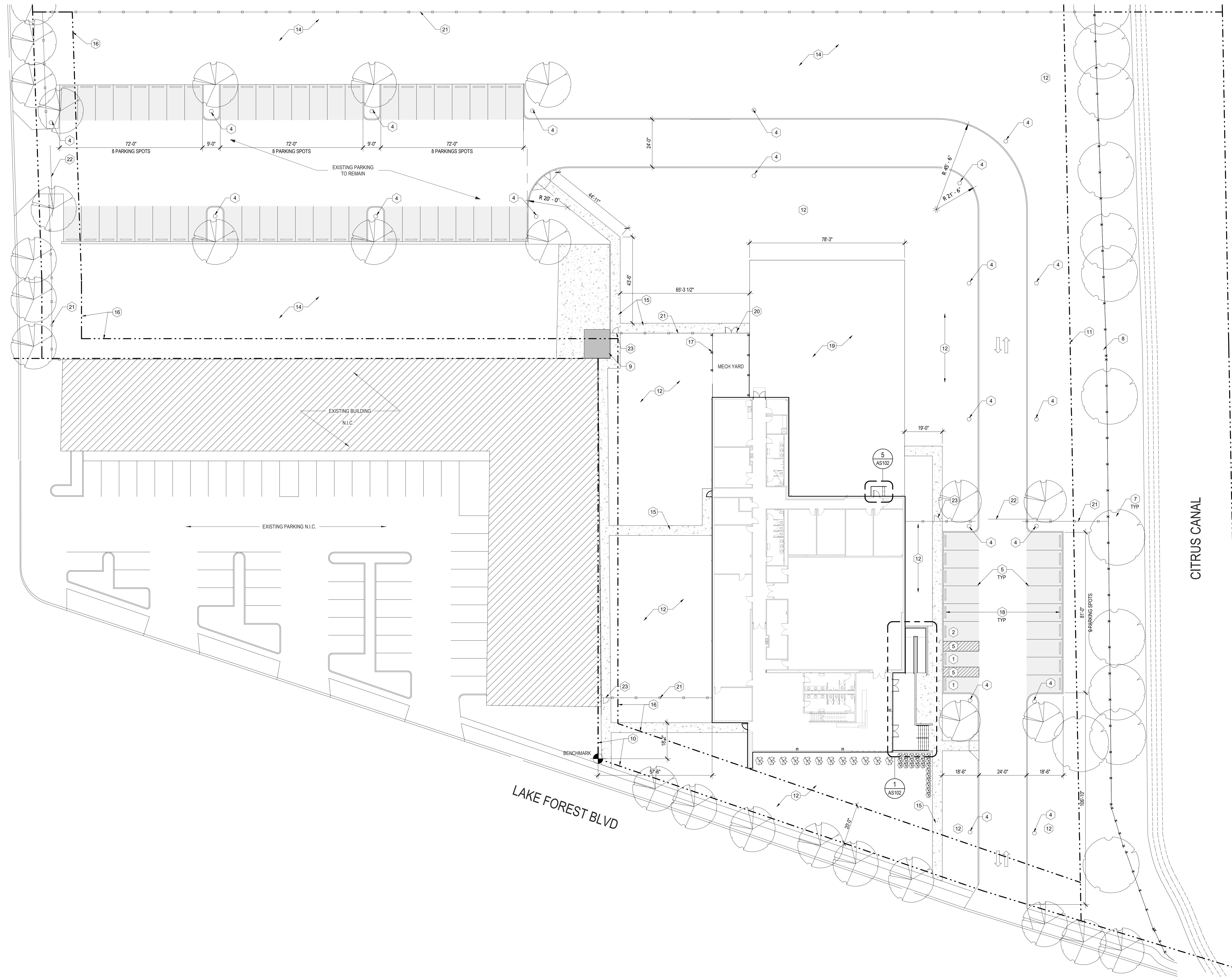
WDG ARCHITECTS ENGINEERS
821 BARONNE ST.
NEW ORLEANS, LA 70113
PHONE (504) 754-5269
FAX (504) 754-5275



BUNDY ROAD

CITRUS CANAL

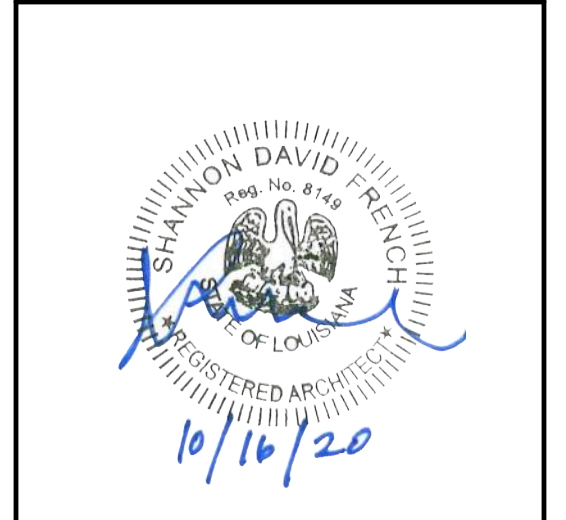
LAKE FOREST BLVD



- GENERAL NOTES - SITE PLAN**
- A. REFERENCE CIVIL DRAWINGS FOR GRADING AND HORIZONTAL CONTROL DRAWINGS.
 - B. REF LANDSCAPE DRAWINGS FOR ALL SITE MATERIALS, LAYOUT, AND ACCESS COMPLIANCE SITE/PATH OF TRAVEL DRAWINGS.
 - C. REFERENCE A-000 FOR ABBREVIATIONS, SYMBOLS AND GENERAL DIMENSIONING NOTES.
 - D. REF A-000 SERIES DRAWINGS FOR ALL WALL TYPE DETAILS AND FIRE-RATED ASSEMBLIES. IF WALL TYPE IS NOT NOTED IN THE PLAN THEN THE WALL TYPE SHALL BE
 - E. REF A-000 SERIES DRAWINGS FOR TYPICAL METAL STUD FRAMING DETAILS AND GUIDELINES.
 - F. REF G-000 SERIES DRAWINGS FOR CODE SUMMARIES AND EXTENT OF FIRE-RATED CONSTRUCTION.
 - G. REF A-600 DRAWINGS FOR EXTERIOR FRAME TYPES.
 - H. REF A-620 DRAWINGS FOR INTERIOR FRAME TYPES.
 - J. REF STRUCTURAL DRAWINGS FOR DIMENSIONS AND ELEVATIONS OF STRUCTURAL SLAB AND WALL ELEMENTS.

- KEYNOTES - FLOOR PLAN**
- 1 ADA PARKING, PROVIDE SIGN WITH 3" DIAMETER GALVANIZED STEEL PIPE POST, SEE CIVIL DRAWINGS
 - 2 ADA VAN PARKING, PROVIDE SIGN WITH 3" DIAMETER GALVANIZED STEEL PIPE POST, SEE CIVIL DRAWINGS
 - 3 NO SMOKING SIGNAGE, PROVIDE SIGN WITH 3" DIAMETER GALVANIZED STEEL PIPE POST, SEE CIVIL DRAWINGS
 - 4 SITE LIGHT POLE, BASE TO BE 30" ABOVE GRADE, REF ELECTRICAL DRAWINGS FOR FIXTURE, SEE STRUCTURAL DRAWINGS FOR FOUNDATION
 - 5 PARKING STRIPING, SEE CIVIL DRAWINGS
 - 6 CONCRETE WHEEL STOP, TYP. SEE CIVIL DRAWINGS
 - 7 EXISTING TREE TO REMAIN, TYP.
 - 8 EXISTING FENCE TO REMAIN
 - 9 ENERGY PAD MOUNTED TRANSFORMER
 - 10 PROPERTY LINE
 - 11 8" SEWERAGE AND WATER BOARD EASEMENT
 - 12 NEW SOD
 - 13 DETENTION POND, SEE CIVIL DRAWINGS
 - 14 BIOSWALE, SEE CIVIL AND LANDSCAPE DRAWINGS
 - 15 NEW SIDEWALK, SEE CIVIL DRAWINGS
 - 16 SETBACK
 - 17 NEW GALVANIZED CHAIN LINK FENCE SYSTEM
 - 18 CONCRETE WHEEL STOP, TYP. SEE CIVIL DRAWINGS
 - 19 OUTDOOR LEARNING AREA - SLAB ON GRADE
 - 20 3'-0" x 6'-0" GALVANIZED CHAIN LINK LOCKABLE GATE
 - 21 6'-0" DECORATIVE METAL FENCE SYSTEM - AMERISTAR MONTAGE PLUS OR EQUAL
 - 22 24'-0" CANTILEVER SLIDING GATE - AMERISTAR MONTAGE PLUS OR EQUAL
 - 23 3'-0" PERSONNEL GATE - AMERISTAR MONTAGE PLUS OR EQUAL

- SITE PLAN LEGEND**
- EXISTING STRUCTURE
 - CONCRETE PAVING, SEE CIVIL DRAWINGS
 - PERVIOUS PAVING AT STALL
 - NEW TREE, SEE LANDSCAPE DRAWINGS
 - EXISTING TREE, SEE LANDSCAPE DRAWINGS



**GREATER ST. STEPHEN MINISTRIES
ELJEANNETTE WHITE HELPING HANDS PARENT
CHILD CENTER - PRICING SET**

9661 LAKE FOREST BLVD
NEW ORLEANS, LA 70127

THE DESIGN CONCEPTS REPRESENTED IN THIS DOCUMENT ARE SPECIFICALLY FOR THIS PROJECT. INFORMATION CONTAINED HEREIN IS THE SOLE PROPERTY OF WDG ARCHITECTS ENGINEERS AND SHALL NOT BE TRANSFERRED TO ANY OTHER DOCUMENTS, USED FOR ANY OTHER PURPOSE OR BE CONVEYED TO THIRD PARTIES IN ANY FORM WHATSOEVER WITHOUT THE EXPRESS WRITTEN CONSENT OF WDG ARCHITECTS ENGINEERS.

MARK	DATE	DESCRIPTION
	10/14/20	PRICING SET

SHEET ISSUED: 10/14/20

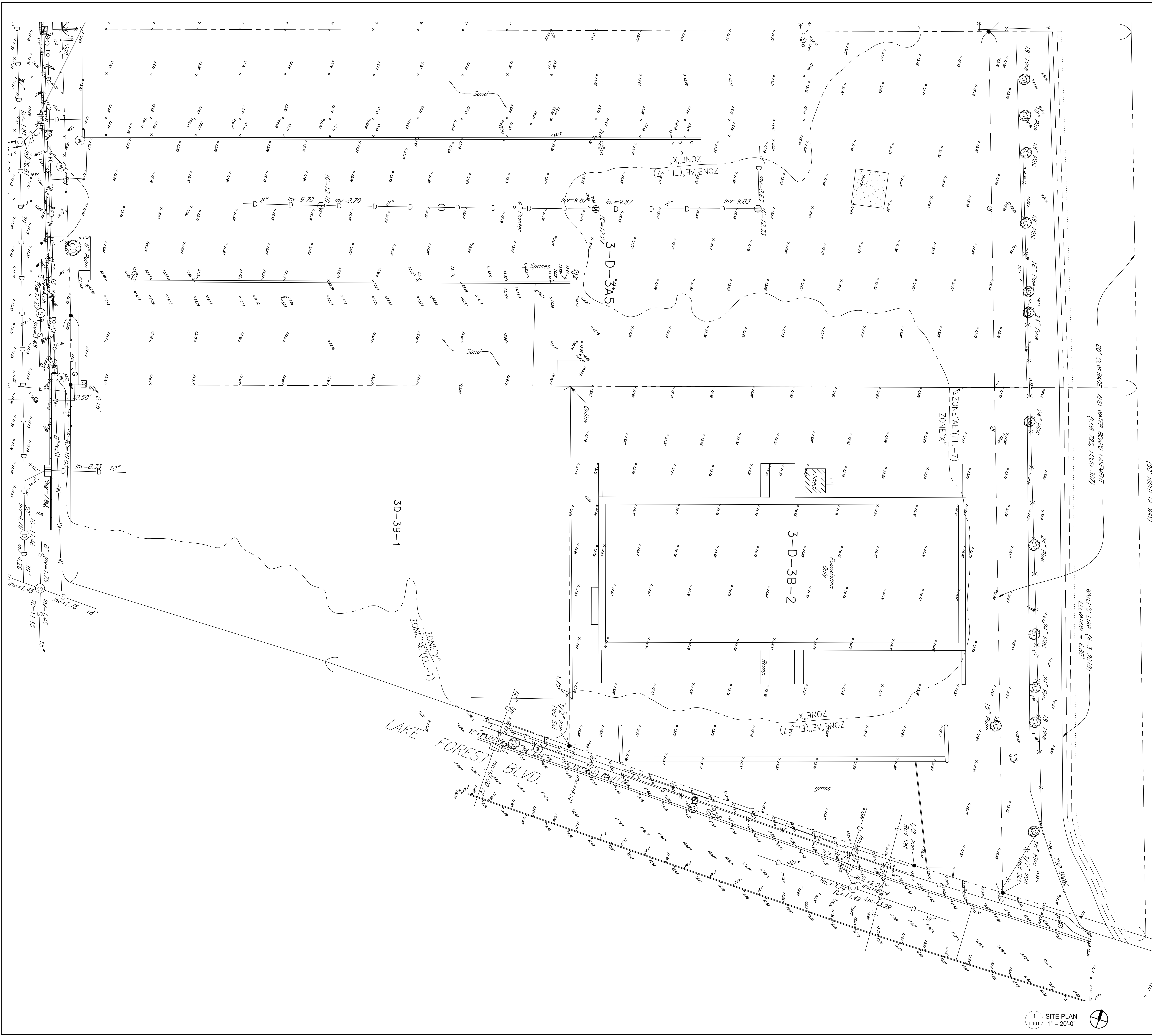
WDG PROJECT NO.: 15-018

© 2017 BY:
WDG ARCHITECTS ENGINEERS, LLC.

SHEET TITLE:
ARCHITECTURAL SITE
PLAN

SHEET NUMBER:

AS101



1 SITE PLAN
L101 1" = 20'-0"

WDG ARCHITECTS ENGINEERS
821 BARBONE ST.
NEW ORLEANS, LA 70113
PHONE (504) 754-5280
FAX (504) 754-5275



EVANS + LIGHTER
landscape architecture
NEW ORLEANS, LA 504-722-2941



**GREATER ST. STEPHEN MINISTRIES
ELJEANNETTE WHITE HELPING HANDS PARENT
CHILD CENTER**
966 LAKE FOREST BLVD
NEW ORLEANS, LA 70127

THE DESIGN CONCEPTS REPRESENTED IN THIS DOCUMENT ARE SPECIFICALLY FOR THIS PROJECT. INFORMATION CONTAINED HEREIN IS THE SOLE PROPERTY OF WDG ARCHITECTS ENGINEERS AND SHALL NOT BE TRANSFERRED TO ANY OTHER DOCUMENTS, USED FOR ANY OTHER PURPOSE OR BE CONVEYED TO THIRD PARTIES IN ANY FORM WHATSOEVER WITHOUT THE EXPRESS WRITTEN CONSENT OF WDG ARCHITECTS ENGINEERS.

MARK	DATE	DESCRIPTION
	09/25/2020	PRICING SET

SHEET ISSUED: 09/25/20

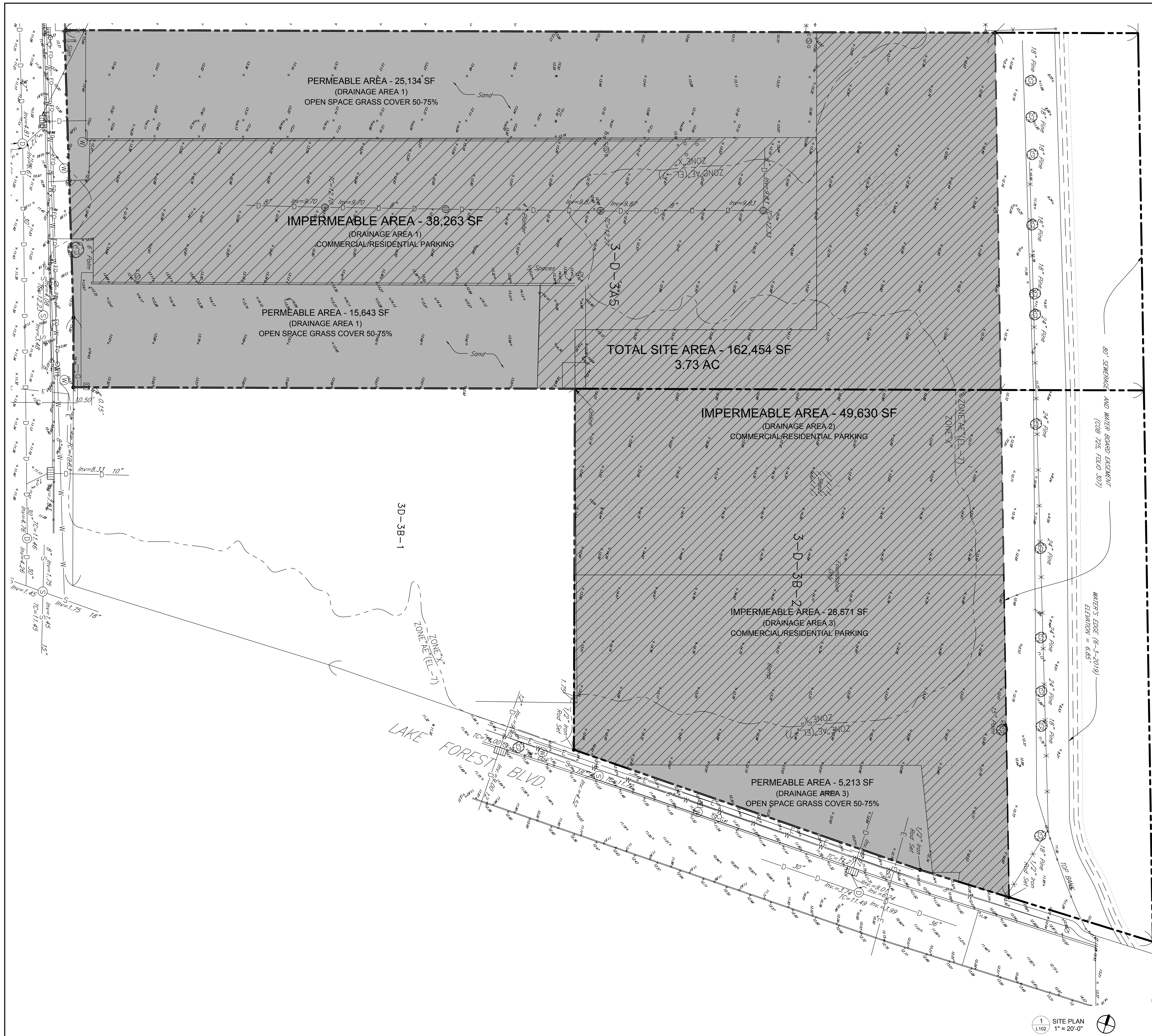
WDG PROJECT NO.: 15-018

© 2017 BY:
WDG ARCHITECTS ENGINEERS, LLC.

SHEET TITLE:
EXISTING DRAINAGE
PLAN

SHEET NUMBER:

L101



SURFACES LEGEND

IMPERMEABLE SURFACE - 116,464 SF

PERMEABLE SURFACE - 45,990 SF

TOTAL DEVELOPMENT SITE
162,454 SF - 3.73 AC

WDG ARCHITECTS ENGINEERS
821 BARBOUR ST.
NEW ORLEANS, LA 70113
PHONE (504) 754-5280
FAX (504) 754-5275



EVANS + LIGHTER
landscape architecture
NEW ORLEANS, LA 504-722-2941



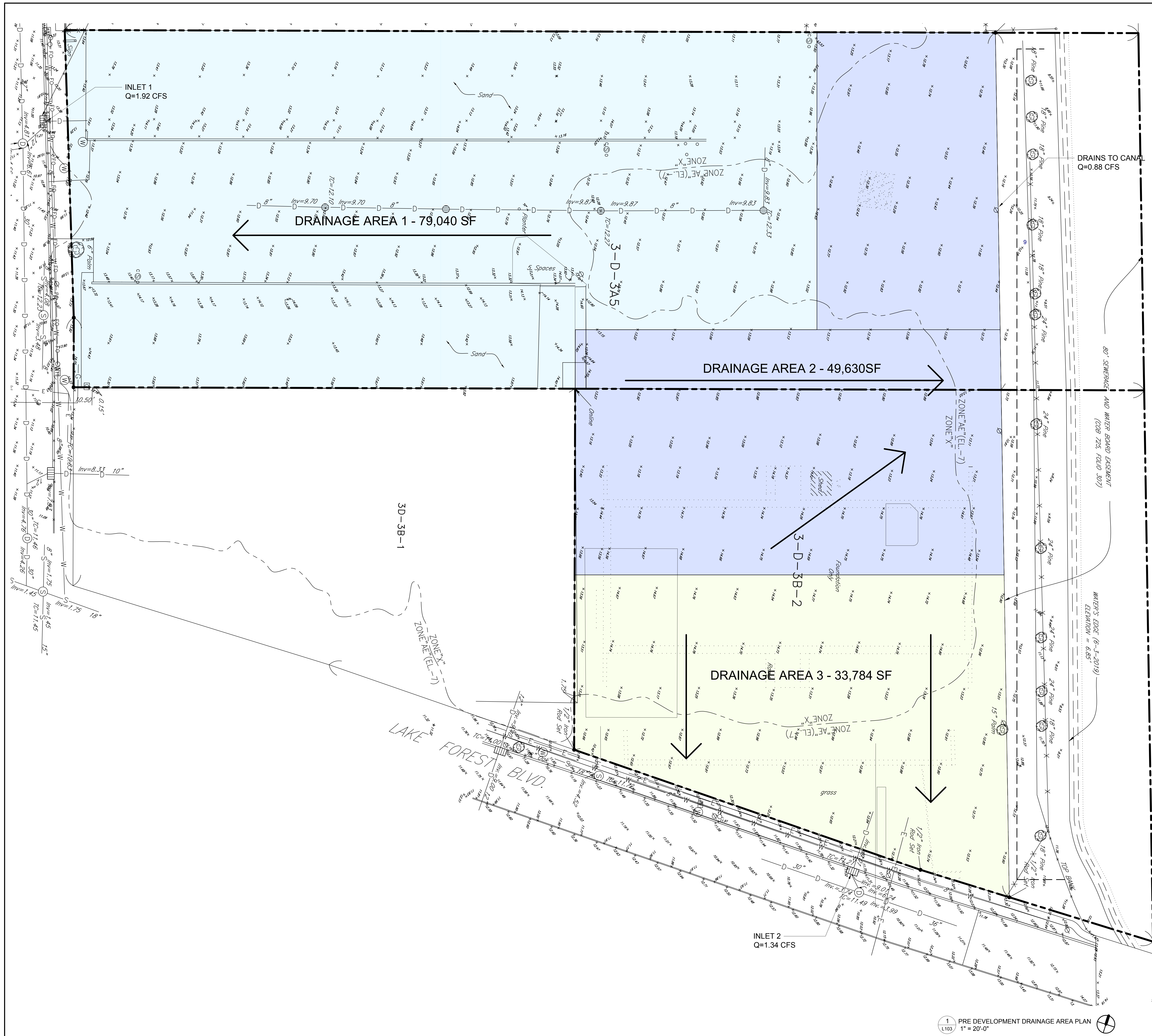
**GREATER ST. STEPHEN MINISTRIES
ELJEANNETTE WHITE HELPING HANDS PARENT
CHILD CENTER**
966 LAKE FOREST BLVD
NEW ORLEANS, LA 70127

THE DESIGN CONCEPTS REPRESENTED IN THIS DOCUMENT ARE SPECIFICALLY FOR THIS PROJECT. INFORMATION CONTAINED HEREIN IS THE SOLE PROPERTY OF WDG ARCHITECTS ENGINEERS AND SHALL NOT BE TRANSFERRED TO ANY OTHER DOCUMENTS, USED FOR ANY OTHER PURPOSE OR BE CONVEYED TO THIRD PARTIES IN ANY FORM WHATSOEVER WITHOUT THE EXPRESS WRITTEN CONSENT OF WDG ARCHITECTS ENGINEERS.

MARK	DATE	DESCRIPTION
	09/25/2020	PRICING SET
		SHEET ISSUED: 09/25/20
		WDG PROJECT NO.: 15-018
		© 2017 BY: WDG ARCHITECTS ENGINEERS, LLC.
		SHEET TITLE: EXISTING SURFACES PLAN
		SHEET NUMBER:

L102

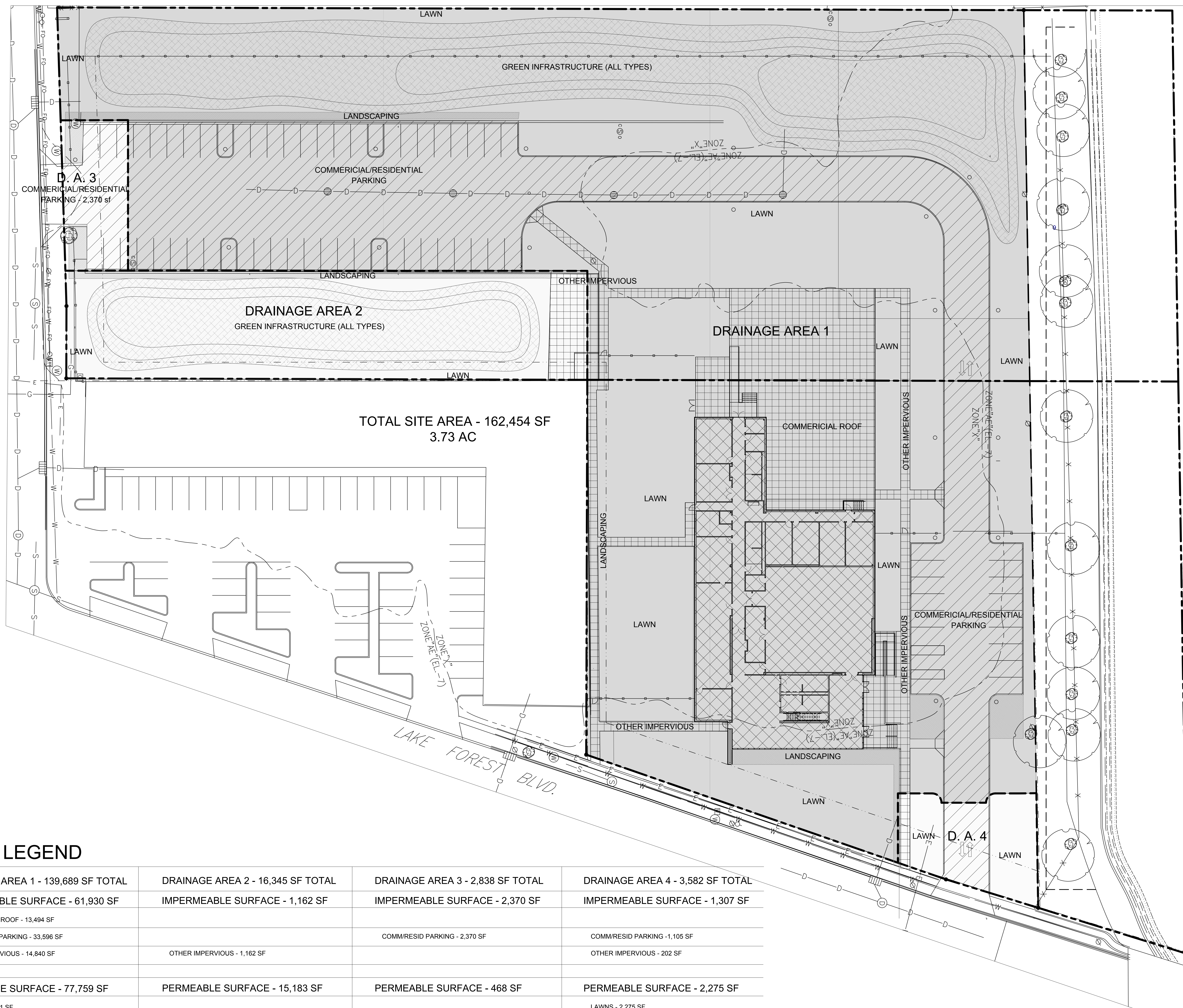
1 SITE PLAN
L102 1" = 20'-0"



**GREATER ST. STEPHEN MINISTRIES
 ELJEANNETTE WHITE HELPING HANDS PARENT
 CHILD CENTER**
 9661 LAKE FOREST BLVD
 NEW ORLEANS, LA 70127

THE DESIGN CONCEPTS REPRESENTED IN THIS DOCUMENT ARE SPECIFICALLY FOR THIS PROJECT. INFORMATION CONTAINED HEREIN IS THE SOLE PROPERTY OF WDG ARCHITECTS ENGINEERS AND SHALL NOT BE TRANSFERRED TO ANY OTHER DOCUMENTS, USED FOR ANY OTHER PURPOSE OR BE CONVEYED TO THIRD PARTIES IN ANY FORM WHATSOEVER WITHOUT THE EXPRESS WRITTEN CONSENT OF WDG ARCHITECTS ENGINEERS.

MARK	DATE	DESCRIPTION
	09/25/2020	PRICING SET
	09/25/20	SHEET ISSUED
		WDG PROJECT NO.: 15-018
		© 2017 BY: WDG ARCHITECTS ENGINEERS, LLC.
		SHEET TITLE: PRE-DEVELOPMENT DRAINAGE AREA PLAN
		SHEET NUMBER:



SURFACES LEGEND

DRAINAGE AREA 1 - 139,689 SF TOTAL		DRAINAGE AREA 2 - 16,345 SF TOTAL		DRAINAGE AREA 3 - 2,838 SF TOTAL		DRAINAGE AREA 4 - 3,582 SF TOTAL	
IMPERMEABLE SURFACE - 61,930 SF		IMPERMEABLE SURFACE - 1,162 SF		IMPERMEABLE SURFACE - 2,370 SF		IMPERMEABLE SURFACE - 1,307 SF	
COMMERCIAL ROOF - 13,494 SF COMM/RESID PARKING - 33,596 SF OTHER IMPERVIOUS - 14,840 SF	OTHER IMPERVIOUS - 1,162 SF		COMM/RESID PARKING - 2,370 SF		COMM/RESID PARKING - 1,105 SF OTHER IMPERVIOUS - 202 SF		
PERMEABLE SURFACE - 77,759 SF		PERMEABLE SURFACE - 15,183 SF		PERMEABLE SURFACE - 468 SF		PERMEABLE SURFACE - 2,275 SF	
LAWNS - 48,231 SF LANDSCAPING - 2,693 SF GREEN INFRASTRUCTURE - 26,835 SF		LAWNS - 15,183 SF LANDSCAPING - 1,260 SF GREEN INFRASTRUCTURE - 13,923		LAWNS - 468 SF LANDSCAPING - 468 SF		LAWNS - 2,275 SF	

WDG ARCHITECTS ENGINEERS
 821 BARBOUR ST.
 NEW ORLEANS, LA 70113
 PHONE (504) 754-5280
 FAX (504) 754-5275



EVANS + LIGHTER
 landscape architecture
 NEW ORLEANS, LA 504-722-2941



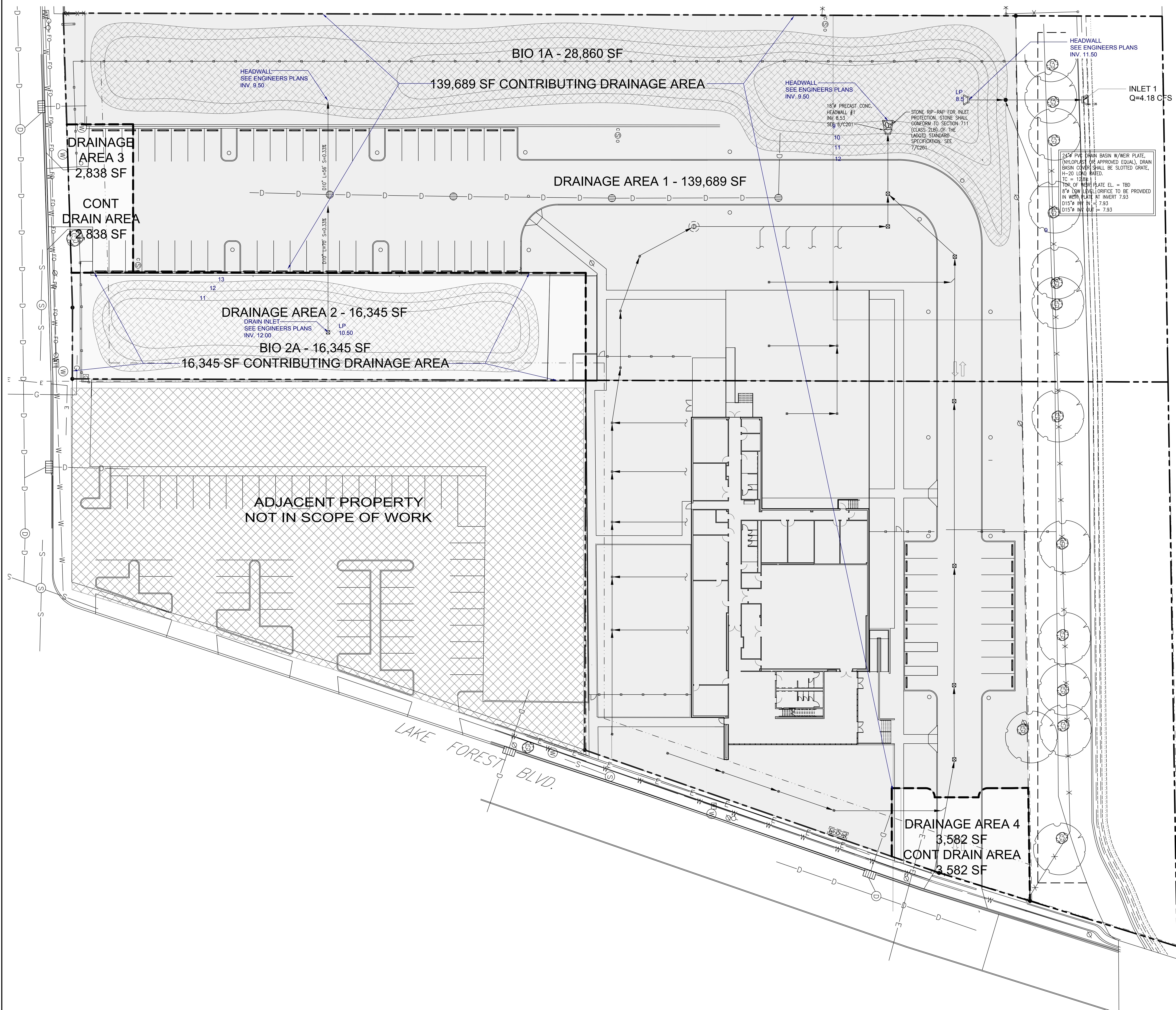
**GREATER ST. STEPHEN MINISTRIES
 ELJEANNETTE WHITE HELPING HANDS PARENT
 CHILD CENTER**
 966 LAKE FOREST BLVD
 NEW ORLEANS, LA 70127

THE DESIGN CONCEPTS REPRESENTED IN THIS DOCUMENT ARE SPECIFICALLY FOR THIS PROJECT. INFORMATION CONTAINED HEREIN IS THE SOLE PROPERTY OF WDG ARCHITECTS ENGINEERS AND SHALL NOT BE TRANSFERRED TO ANY OTHER DOCUMENTS, USED FOR ANY OTHER PURPOSE OR BE CONVEYED TO THIRD PARTIES IN ANY FORM WHATSOEVER WITHOUT THE EXPRESS WRITTEN CONSENT OF WDG ARCHITECTS ENGINEERS.

MARK	DATE	DESCRIPTION
	09/25/2020	PRICING SET
	09/25/20	SHEET ISSUED
		WDG PROJECT NO. - 15-018
		© 2017 BY: WDG ARCHITECTS ENGINEERS, LLC.
		SHEET TITLE: POST-DEVELOPMENT SURFACES PLAN

SHEET NUMBER:

L104



WDG ARCHITECTS ENGINEERS
 821 BARONNE ST.
 NEW ORLEANS, LA 70113
 PHONE (504) 754-5280
 FAX (504) 754-5275



EVANS + LIGHTER
 landscape architecture
 NEW ORLEANS, LA 504-722-2941



**GREATER ST. STEPHEN MINISTRIES
 ELJEANNETTE WHITE HELPING HANDS PARENT
 CHILD CENTER**
 966 LAKE FOREST BLVD
 NEW ORLEANS, LA 70127

THE DESIGN CONCEPTS REPRESENTED IN THIS DOCUMENT ARE SPECIFICALLY FOR THIS PROJECT. INFORMATION CONTAINED HEREIN IS THE SOLE PROPERTY OF WDG ARCHITECTS ENGINEERS AND SHALL NOT BE TRANSFERRED TO ANY OTHER DOCUMENTS, USED FOR ANY OTHER PURPOSE OR BE CONVEYED TO THIRD PARTIES IN ANY FORM WHATSOEVER WITHOUT THE EXPRESS WRITTEN CONSENT OF WDG ARCHITECTS ENGINEERS.

MARK	DATE	DESCRIPTION
	09/25/2020	PRICING SET

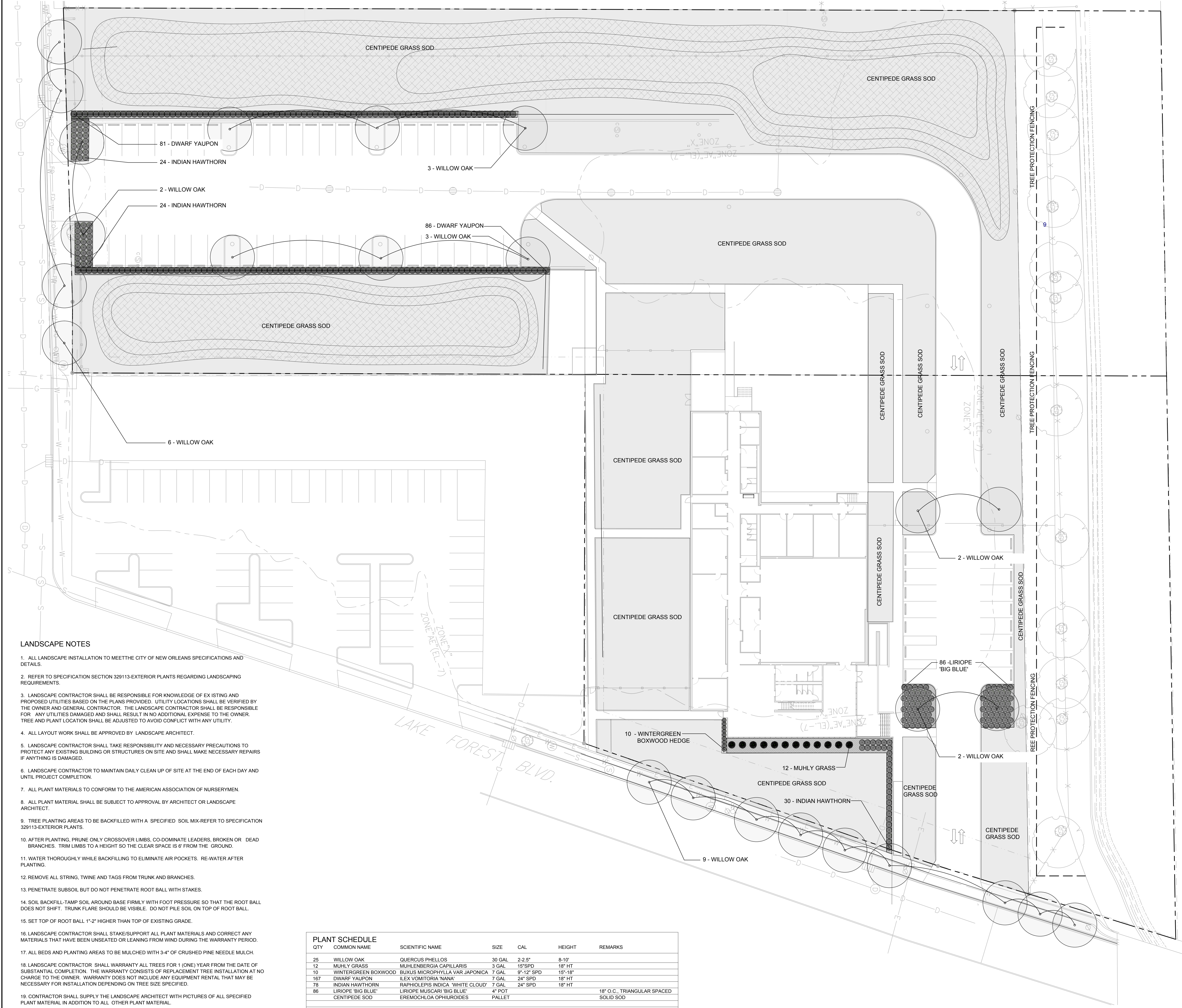
SHEET ISSUED: 09/25/20

WDG PROJECT NO.: 15-018

© 2017 BY:
 WDG ARCHITECTS ENGINEERS, LLC.

SHEET TITLE:
 PROPOSED DRAINAGE
 AND STORMWATER
 PLAN

SHEET NUMBER:



- LANDSCAPE NOTES**
1. ALL LANDSCAPE INSTALLATION TO MEET THE CITY OF NEW ORLEANS SPECIFICATIONS AND DETAILS.
 2. REFER TO SPECIFICATION SECTION 329113-EXTERIOR PLANTS REGARDING LANDSCAPING REQUIREMENTS.
 3. LANDSCAPE CONTRACTOR SHALL BE RESPONSIBLE FOR KNOWLEDGE OF EXISTING AND PROPOSED UTILITIES BASED ON THE PLANS PROVIDED. UTILITY LOCATIONS SHALL BE VERIFIED BY THE OWNER AND GENERAL CONTRACTOR. THE LANDSCAPE CONTRACTOR SHALL BE RESPONSIBLE FOR ANY UTILITIES DAMAGED AND SHALL RESULT IN NO ADDITIONAL EXPENSE TO THE OWNER. TREE AND PLANT LOCATION SHALL BE ADJUSTED TO AVOID CONFLICT WITH ANY UTILITY.
 4. ALL LAYOUT WORK SHALL BE APPROVED BY LANDSCAPE ARCHITECT.
 5. LANDSCAPE CONTRACTOR SHALL TAKE RESPONSIBILITY AND NECESSARY PRECAUTIONS TO PROTECT ANY EXISTING BUILDING OR STRUCTURES ON SITE AND SHALL MAKE NECESSARY REPAIRS IF ANYTHING IS DAMAGED.
 6. LANDSCAPE CONTRACTOR TO MAINTAIN DAILY CLEAN UP OF SITE AT THE END OF EACH DAY AND UNTIL PROJECT COMPLETION.
 7. ALL PLANT MATERIALS TO CONFORM TO THE AMERICAN ASSOCIATION OF NURSERYMEN.
 8. ALL PLANT MATERIAL SHALL BE SUBJECT TO APPROVAL BY ARCHITECT OR LANDSCAPE ARCHITECT.
 9. TREE PLANTING AREAS TO BE BACKFILLED WITH A SPECIFIED SOIL MIX-REFER TO SPECIFICATION 329113-EXTERIOR PLANTS.
 10. AFTER PLANTING, PRUNE ONLY CROSSOVER LIMBS, CO-DOMINATE LEADERS, BROKEN OR DEAD BRANCHES. TRIM LIMBS TO A HEIGHT SO THE CLEAR SPACE IS 6' FROM THE GROUND.
 11. WATER THOROUGHLY WHILE BACKFILLING TO ELIMINATE AIR POCKETS. RE-WATER AFTER PLANTING.
 12. REMOVE ALL STRING, TWINE AND TAGS FROM TRUNK AND BRANCHES.
 13. PENETRATE SUBSOIL BUT DO NOT PENETRATE ROOT BALL WITH STAKES.
 14. SOIL BACKFILL-TAMP SOIL AROUND BASE FIRMLY WITH FOOT PRESSURE SO THAT THE ROOT BALL DOES NOT SHIFT. TRUNK FLARE SHOULD BE VISIBLE. DO NOT PILE SOIL ON TOP OF ROOT BALL.
 15. SET TOP OF ROOT BALL 1"-2" HIGHER THAN TOP OF EXISTING GRADE.
 16. LANDSCAPE CONTRACTOR SHALL STAKE/SUPPORT ALL PLANT MATERIALS AND CORRECT ANY MATERIALS THAT HAVE BEEN UNSEATED OR LEANING FROM WIND DURING THE WARRANTY PERIOD.
 17. ALL BEDS AND PLANTING AREAS TO BE MULCHED WITH 3"-4" OF CRUSHED PINE NEEDLE MULCH.
 18. LANDSCAPE CONTRACTOR SHALL WARRANTY ALL TREES FOR 1 (ONE) YEAR FROM THE DATE OF SUBSTANTIAL COMPLETION. THE WARRANTY CONSISTS OF REPLACEMENT TREE INSTALLATION AT NO CHARGE TO THE OWNER. WARRANTY DOES NOT INCLUDE ANY EQUIPMENT RENTAL THAT MAY BE NECESSARY FOR INSTALLATION DEPENDING ON TREE SIZE SPECIFIED.
 19. CONTRACTOR SHALL SUPPLY THE LANDSCAPE ARCHITECT WITH PICTURES OF ALL SPECIFIED PLANT MATERIAL IN ADDITION TO ALL OTHER PLANT MATERIAL.
 20. REQUIRED ELEVATIONS IN GREENSPACE AREAS DEPICT THE ELEVATION OF THE TOP OF SOD. ALLOWANCE FOR THICKNESS OF TOPSOIL, SOD, ETC. IS TO BE MADE TO ENSURE THAT THE REQUIRED ELEVATIONS ARE PROVIDED.

QTY	COMMON NAME	SCIENTIFIC NAME	SIZE	CAL	HEIGHT	REMARKS
25	WILLOW OAK	QUERCUS PHELLOS	30 GAL	2-2.5"	8-10'	
12	MUHLY GRASS	MUHLENBERGIA CAPILLARIS	3 GAL	15"SPD	18" HT	
10	WINTERGREEN BOXWOOD	BUXUS MICROPHYLLA VAR JAPONICA	7 GAL	9"-12" SPD	15"-18"	
167	DWARF YAUPON	ILEX VOMITORIA 'NANA'	7 GAL	24" SPD	18" HT	
78	INDIAN HAWTHORN	RAPIHOLEPIS INDICA 'WHITE CLOUD'	7 GAL	24" SPD	18" HT	
86	LIRIOPE 'BIG BLUE'	LIRIOPE MUSCARI 'BIG BLUE'	4" POT			
	CENTIPEDE SOD	EREMOCHLOA OPHIUROIDES	PALLET		18" O.C. TRIANGULAR SPACED SOLID SOD	

WDG ARCHITECTS ENGINEERS
 871 BRONNE ST.
 NEW ORLEANS, LA 70113
 PHONE (504) 754-5280
 FAX (504) 754-5275



EVANS + LIGHTER
 landscape architecture
 NEW ORLEANS, LA 504-722-2941



**GREATER ST. STEPHEN MINISTRIES
 ELJEANNETTE WHITE HELPING HANDS PARENT
 CHILD CENTER**
 966 LAKE FOREST BLVD
 NEW ORLEANS, LA 70127

THE DESIGN CONCEPTS REPRESENTED IN THIS DOCUMENT ARE SPECIFICALLY FOR THIS PROJECT. INFORMATION CONTAINED HEREIN IS THE SOLE PROPERTY OF WDG ARCHITECTS ENGINEERS AND SHALL NOT BE TRANSFERRED TO ANY OTHER DOCUMENTS, USED FOR ANY OTHER PURPOSE OR BE CONVEYED TO THIRD PARTIES IN ANY FORM WHATSOEVER WITHOUT THE EXPRESS WRITTEN CONSENT OF WDG ARCHITECTS ENGINEERS.

MARK	DATE	DESCRIPTION
	09/25/2020	PRICING SET

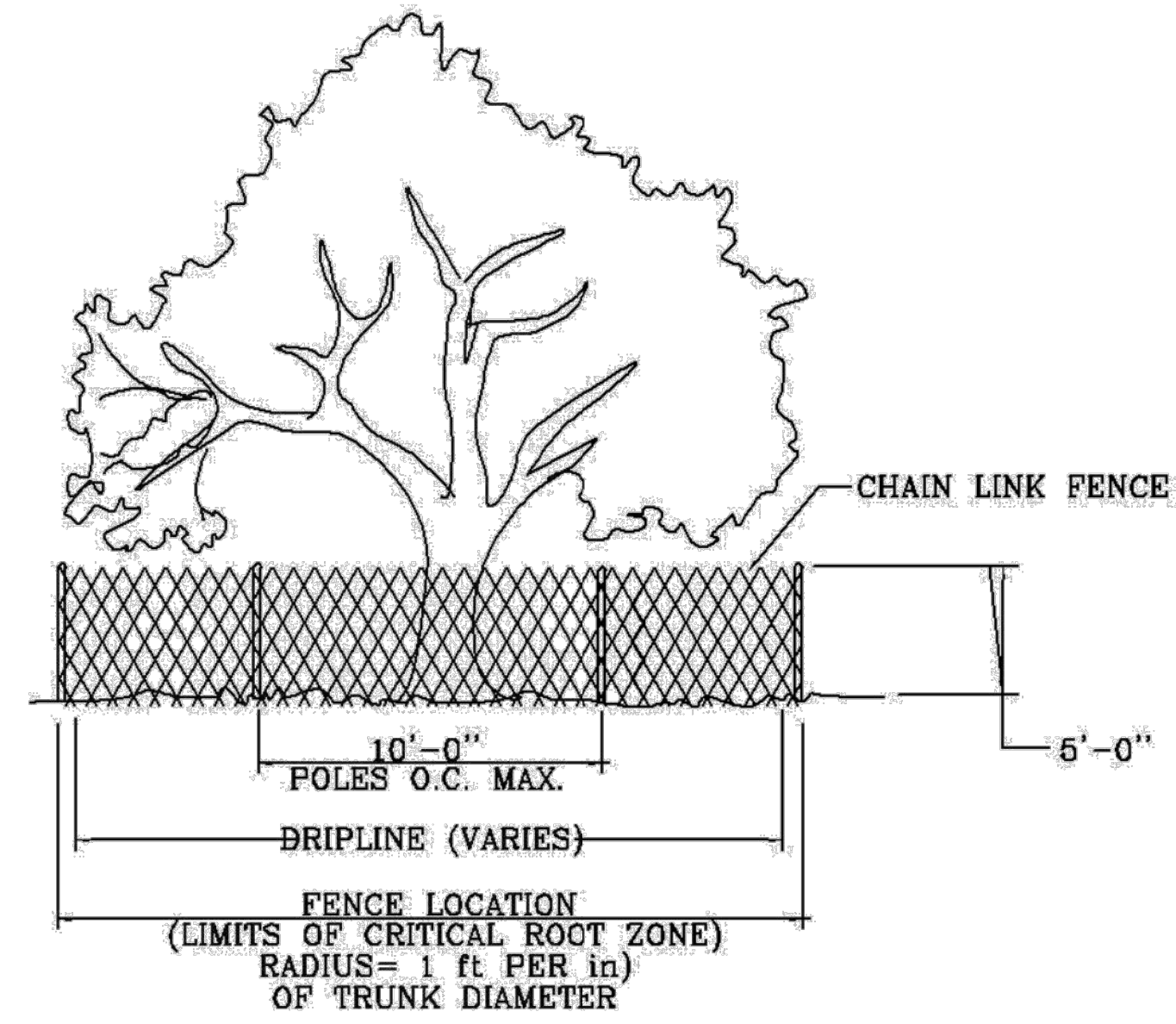
SHEET ISSUED: 09/25/20
 WDG PROJECT NO.: 15-018

© 2017 BY:
 WDG ARCHITECTS ENGINEERS, LLC.

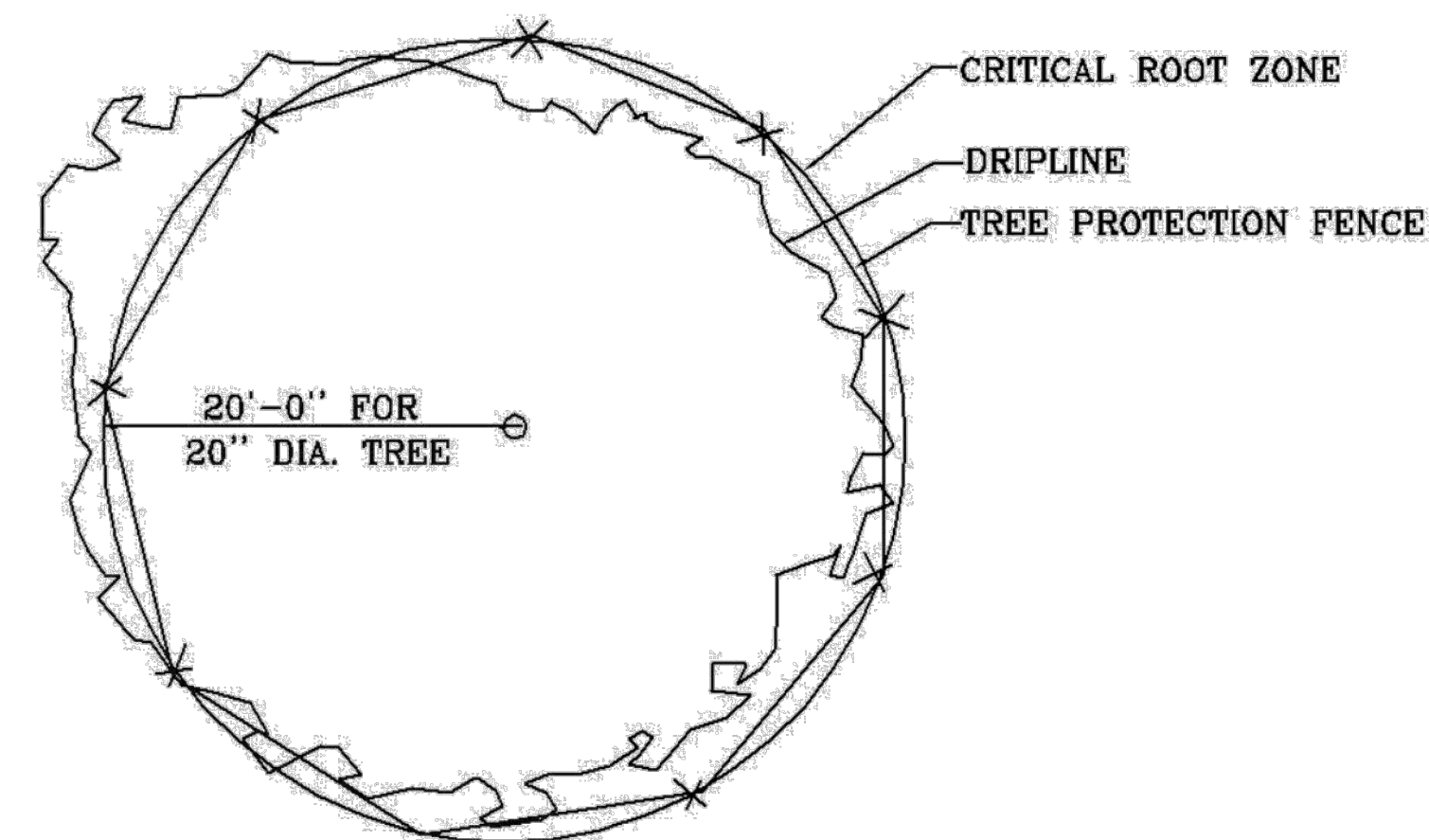
SHEET TITLE:
 LANDSCAPE PLAN

SHEET NUMBER:

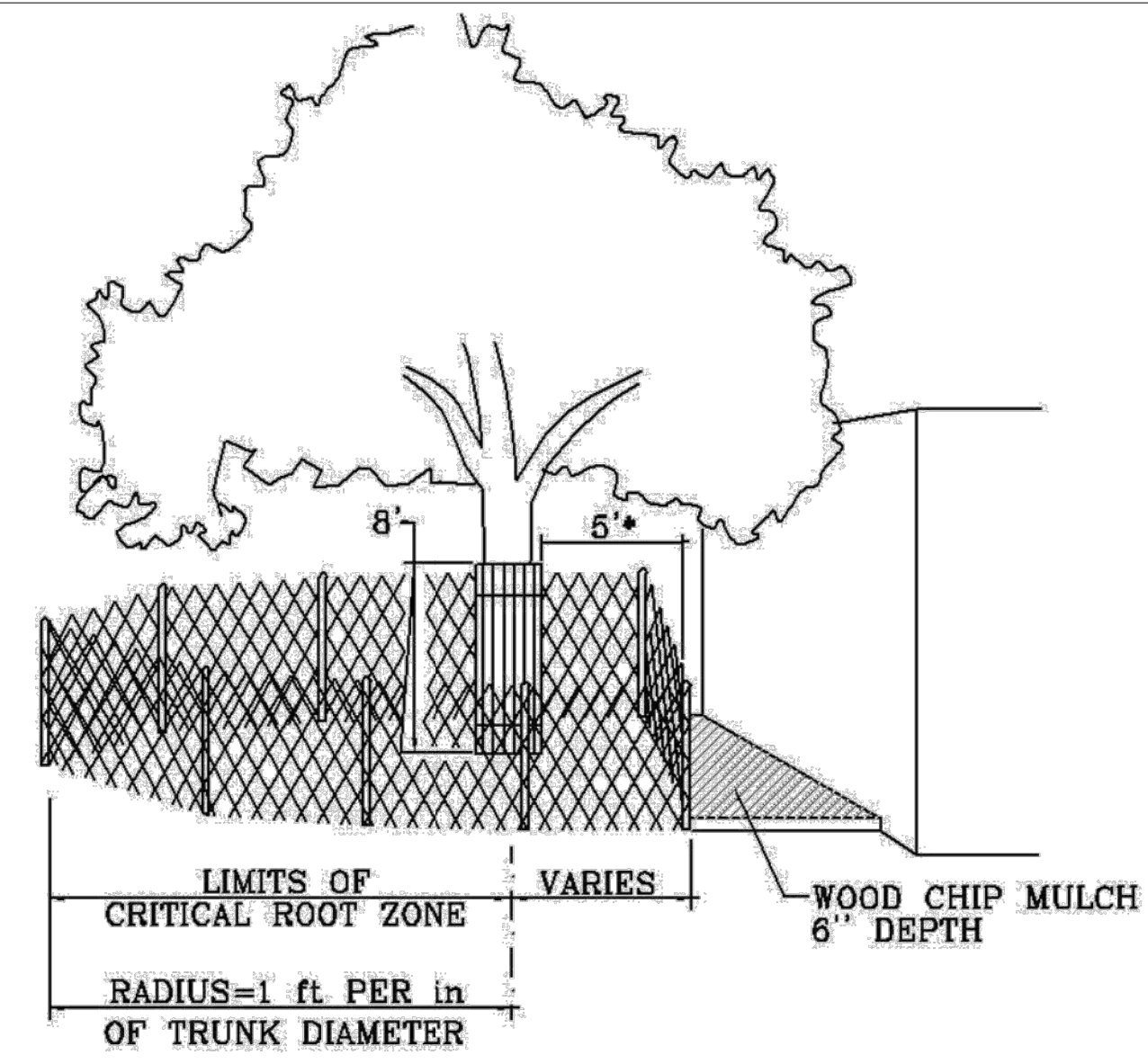
L106



TREE PROTECTION FENCING
CHAIN LINK FENCE
N. T. S.

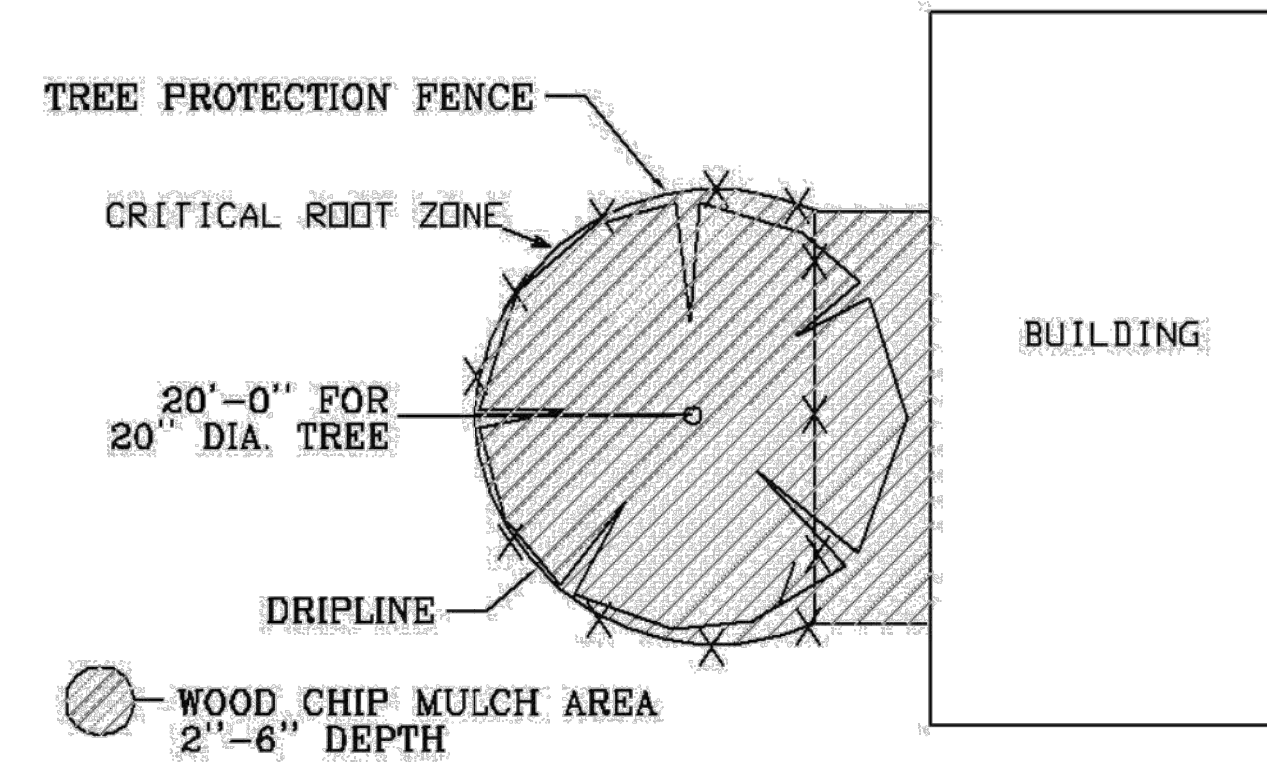


TREE PROTECTION FENCING
CHAIN LINK FENCE
N. T. S.

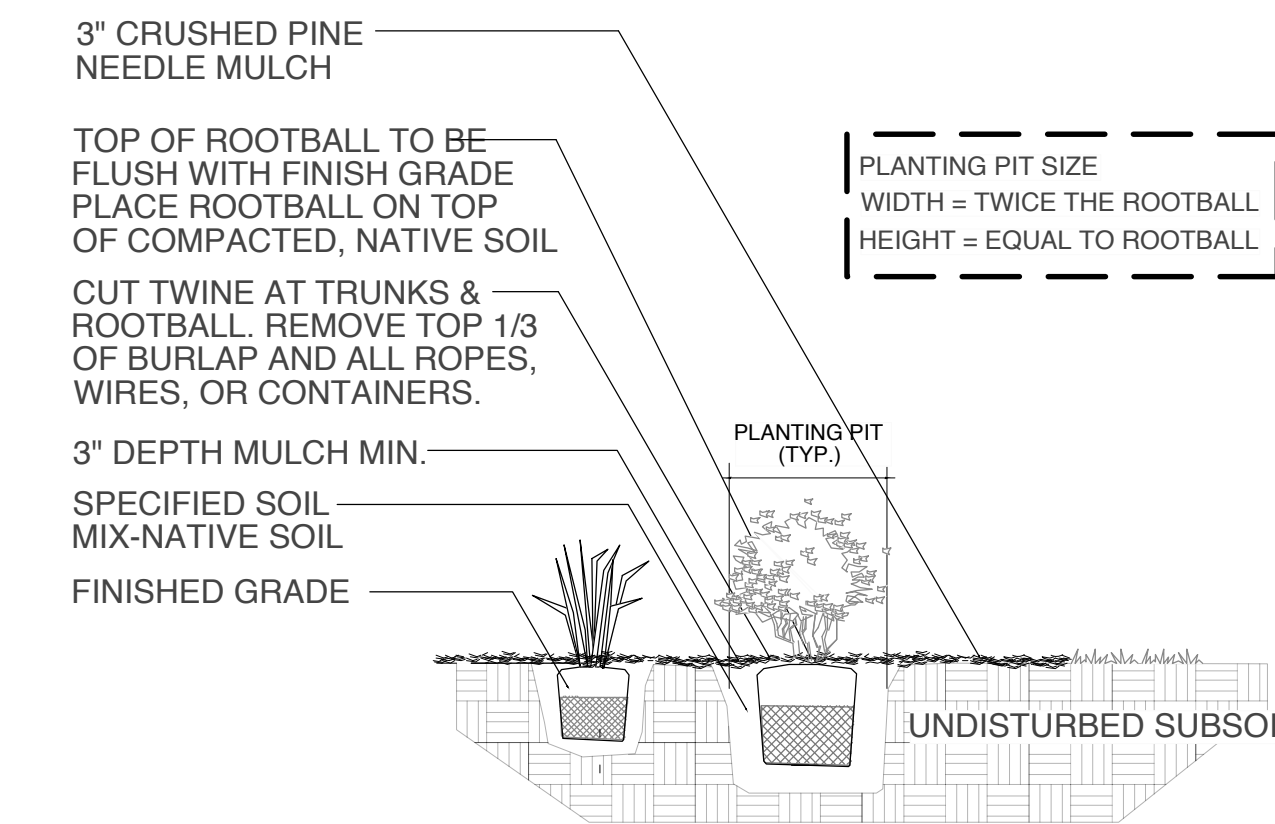
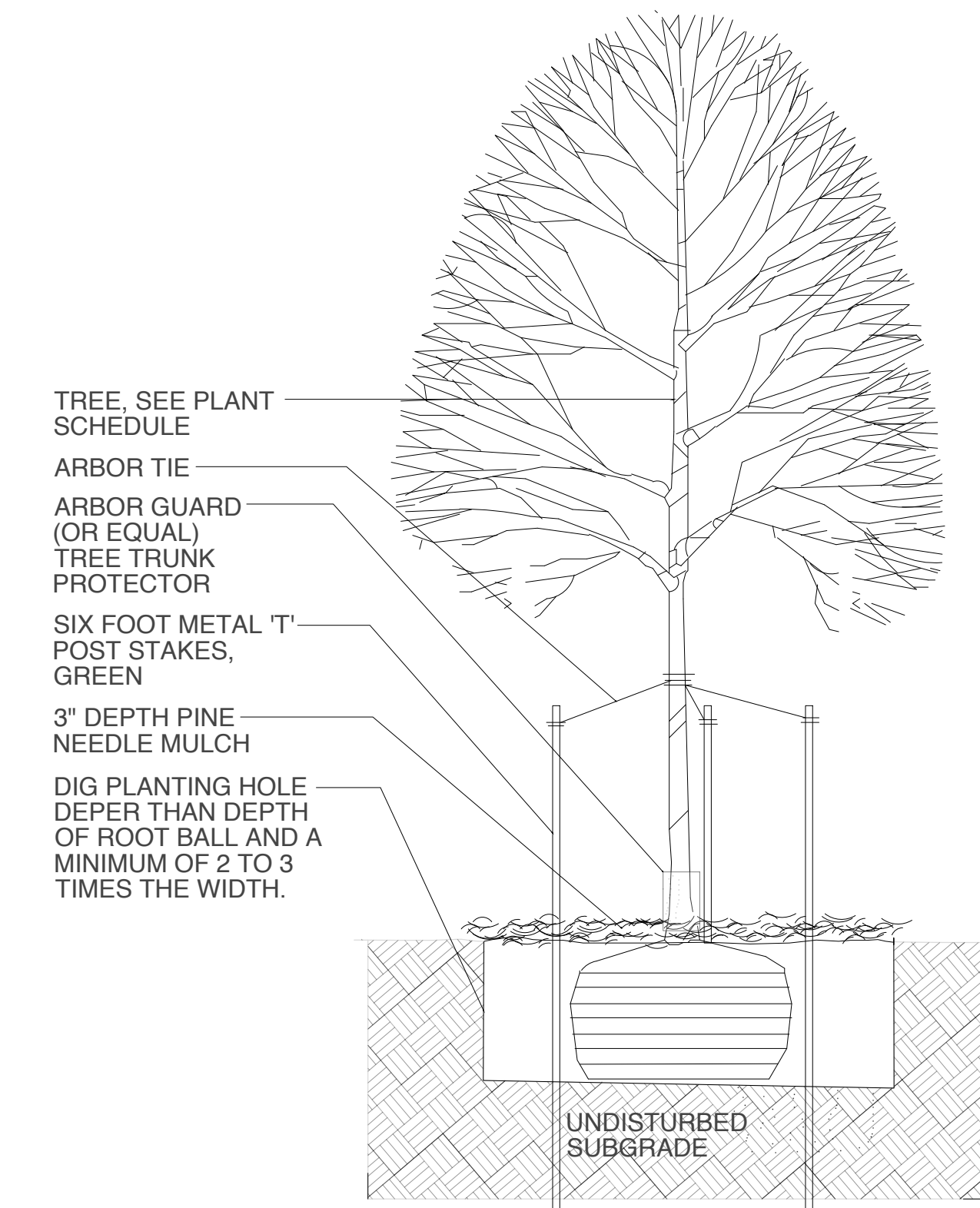


*AS NEEDED TO PROVIDE MINIMUM NECESSARY WORK SPACE. IF LESS THAN 5', THEN ADD BOARDS STRAPPED TO TRUNK.

MODIFIED TREE PROTECTION FENCING
CHAIN LINK FENCE
N. T. S.

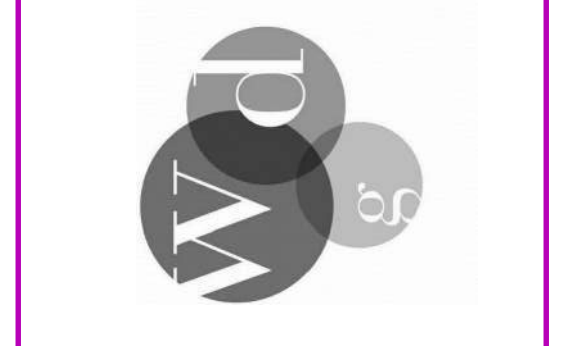


MODIFIED TREE PROTECTION FENCING
CHAIN LINK FENCE
N. T. S.



1 TREE PROTECTION DETAILS
L107 NTS

2 LANDSCAPE DETAILS
L107 NTS



THE DESIGN CONCEPTS REPRESENTED IN THIS DOCUMENT ARE SPECIFICALLY FOR THIS PROJECT. INFORMATION CONTAINED HEREIN IS THE SOLE PROPERTY OF WDG ARCHITECTS ENGINEERS AND SHALL NOT BE TRANSFERRED TO ANY OTHER DOCUMENTS, USED FOR ANY OTHER PURPOSE OR BE CONVEYED TO THIRD PARTIES IN ANY FORM WHATSOEVER WITHOUT THE EXPRESS WRITTEN CONSENT OF WDG ARCHITECTS ENGINEERS.

MARK	DATE	DESCRIPTION
	09/25/2020	PRICING SET

SHEET ISSUED: 09/25/20
WDG PROJECT NO.: 15-018

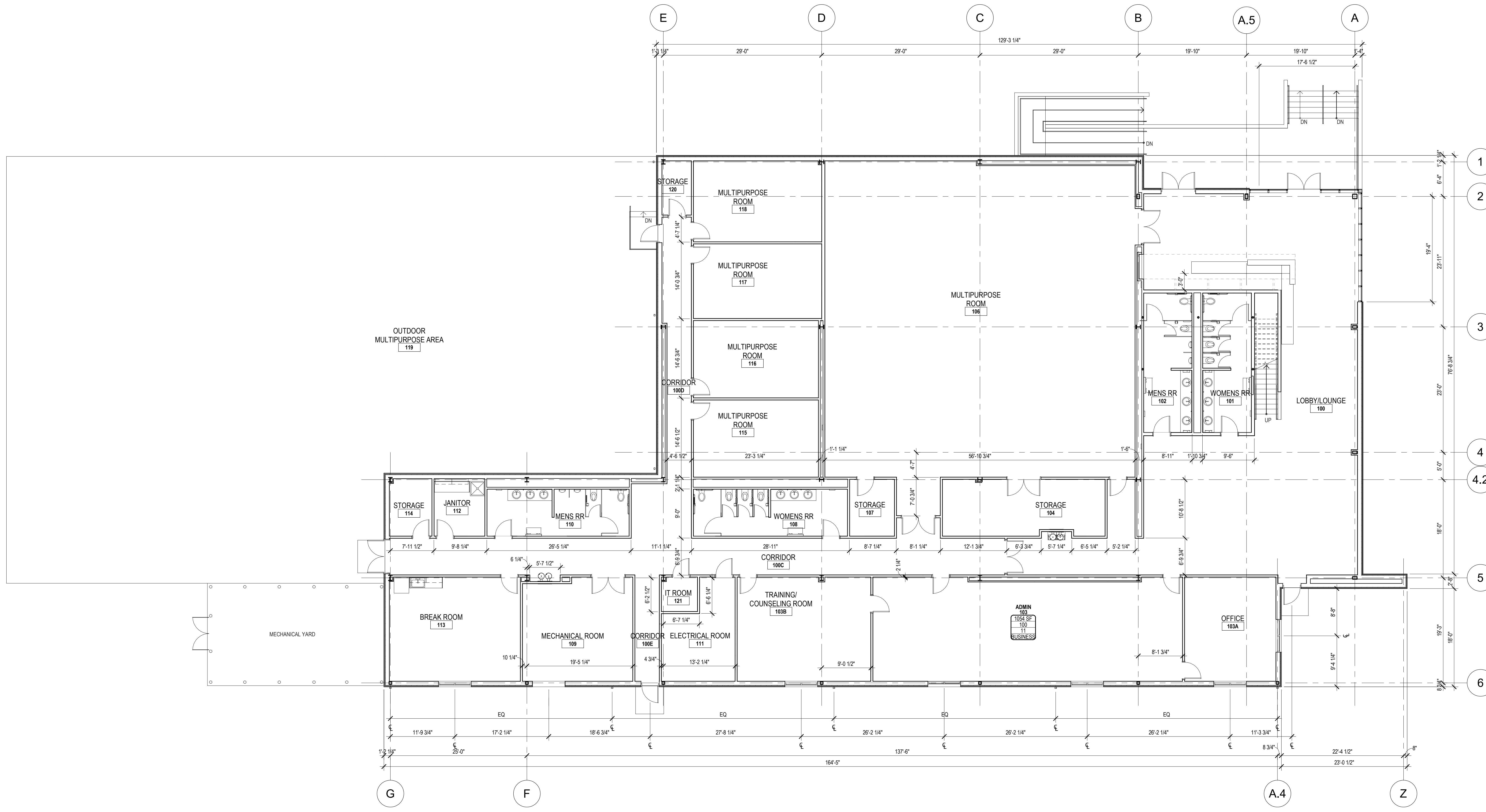
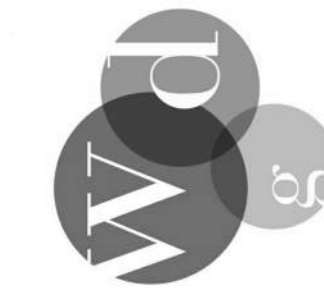
© 2017 BY:
WDG ARCHITECTS ENGINEERS, LLC.
SHEET TITLE:
LANDSCAPE DETAILS

SHEET NUMBER:
L107

GENERAL NOTES - PLAN

- A. REFERENCE CIVIL DRAWINGS FOR GRADING AND HORIZONTAL CONTROL DRAWINGS.
- B. REF LANDSCAPE DRAWINGS FOR ALL SITE MATERIALS, LAYOUT, AND ACCESS COMPLIANCE SITE/PATH OF TRAVEL DRAWINGS.
- C. REFERENCE A-000 FOR ABBREVIATIONS, SYMBOLS AND GENERAL DIMENSIONING NOTES.
- D. REF A-000 SERIES DRAWINGS FOR ALL WALL TYPE DETAILS AND FIRE-RATED ASSEMBLIES. IF WALL TYPE IS NOT NOTED IN THE PLAN THEN THE WALL TYPE SHALL BE
- E. REF A-000 SERIES DRAWINGS FOR TYPICAL METAL STUD FRAMING DETAILS AND GUIDELINES.
- F. REF G-000 SERIES DRAWINGS FOR CODE SUMMARIES AND EXTENT OF FIRE-RATED CONSTRUCTION.
- G. REF A-600 DRAWINGS FOR EXTERIOR FRAME TYPES.
- H. REF A-620 DRAWINGS FOR INTERIOR FRAME TYPES.
- J. REF STRUCTURAL DRAWINGS FOR DIMENSIONS AND ELEVATIONS OF STRUCTURAL SLAB AND WALL ELEMENTS.

WDG ARCHITECTS ENGINEERS
821 BARONNE ST.
NEW ORLEANS, LA 70113
PHONE (504) 754-5280
FAX (504) 754-5275



GREATER ST. STEPHEN MINISTRIES
ELJEANNETTE WHITE HELPING HANDS PARENT
CHILD CENTER - PRICING SET
 9661 LAKE FOREST BLVD
 NEW ORLEANS, LA 70127

THE DESIGN CONCEPTS REPRESENTED IN THIS DOCUMENT ARE SPECIFICALLY FOR THIS PROJECT. INFORMATION CONTAINED HEREIN IS THE SOLE PROPERTY OF WDG ARCHITECTS ENGINEERS AND SHALL NOT BE TRANSFERRED TO ANY OTHER DOCUMENTS, USED FOR ANY OTHER PURPOSE OR BE CONVEYED TO THIRD PARTIES IN ANY FORM WHATSOEVER WITHOUT THE EXPRESS WRITTEN CONSENT OF WDG ARCHITECTS ENGINEERS.

MARK	DATE	DESCRIPTION
10/14/20		PRICING SET
SHEET ISSUED: 10/14/20		
WDG PROJECT NO.: 15-018		
© 2017 BY: WDG ARCHITECTS ENGINEERS, LLC.		
SHEET TITLE: DIMENSION PLAN		

1 DIMENSION PLAN
A102 / 1/8" = 1'-0"

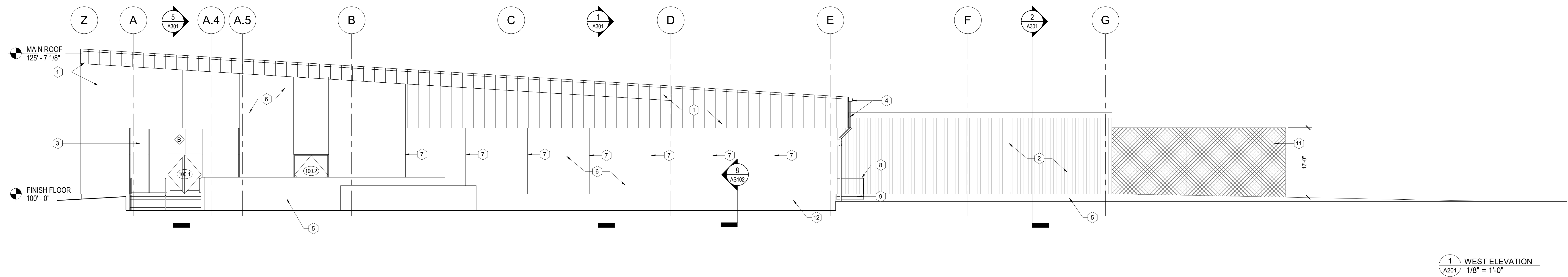
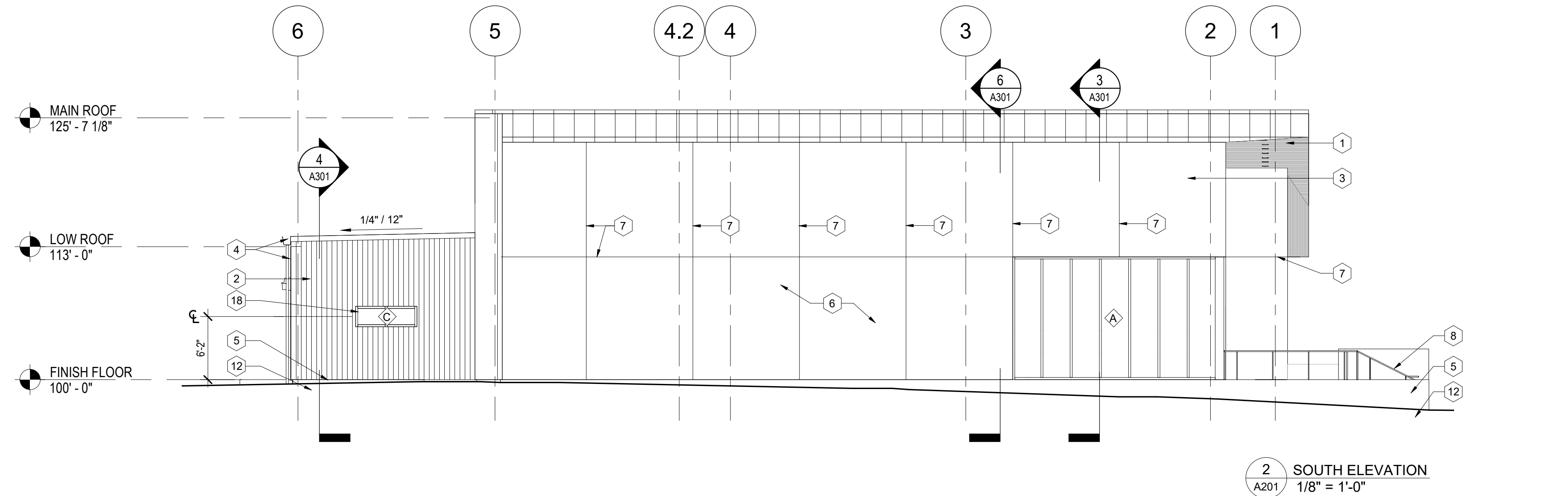
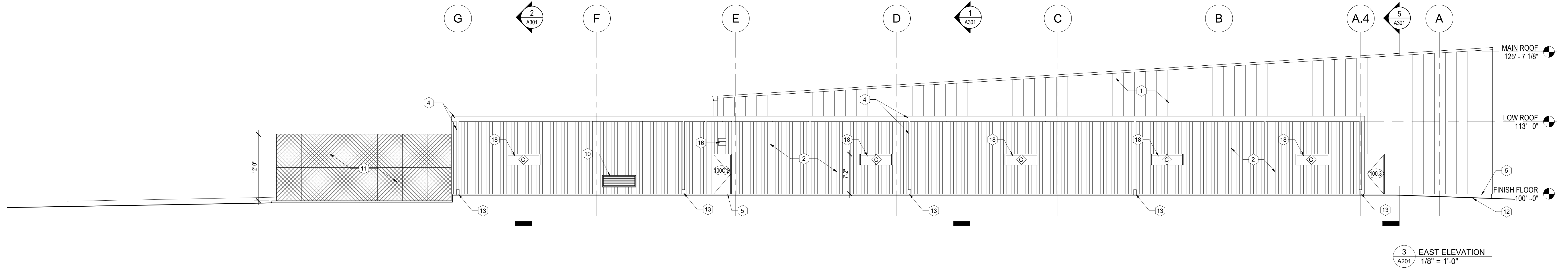
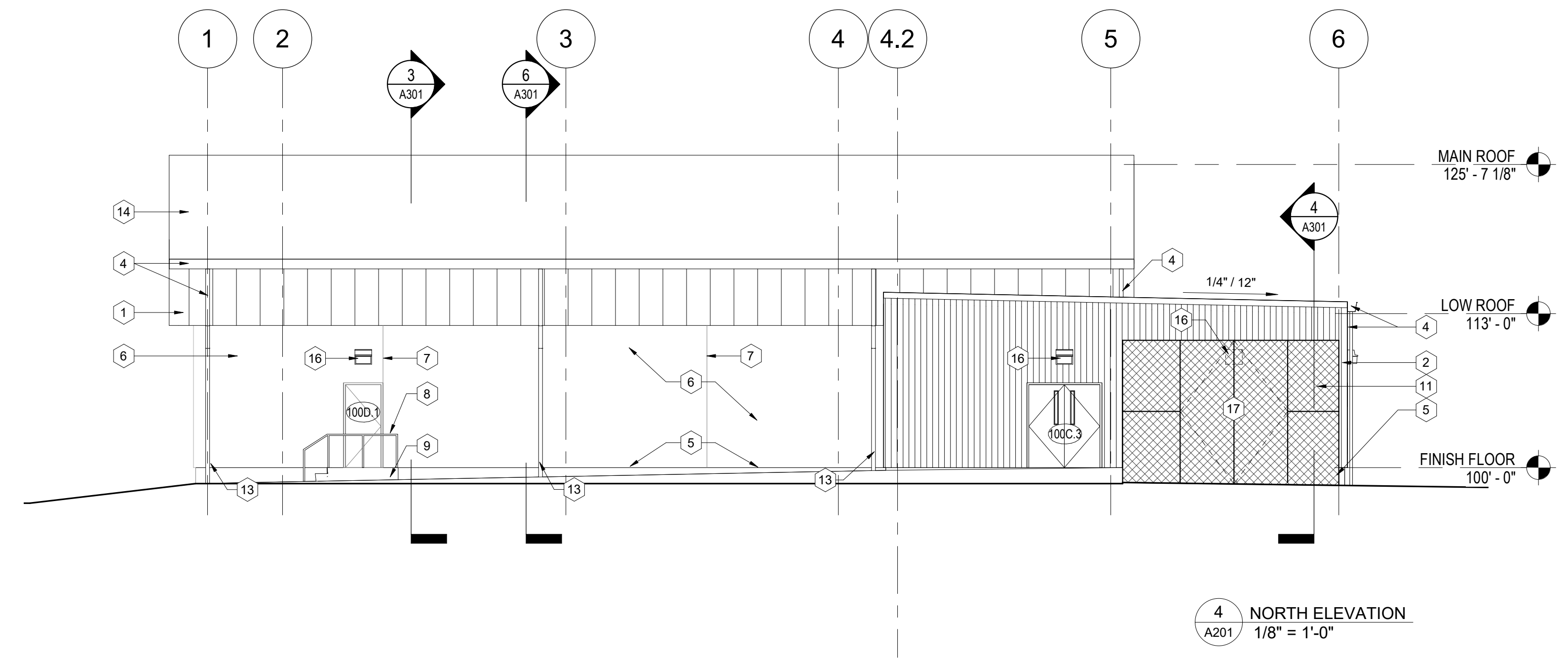
SHEET NUMBER:
A102

KEYNOTES - EXTERIOR ELEVATIONS

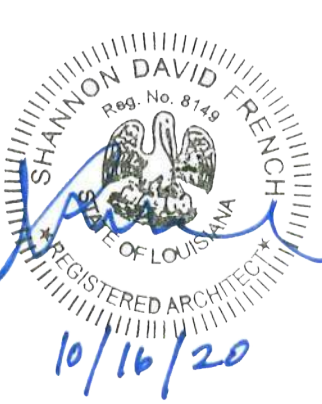
- 1 PREFINISHED METAL PANEL SYSTEM
- 2 PREFINISHED CORRUGATED METAL CLADDING
- 3 GLASS STOREFRONT WALL SYSTEM
- 4 PREFINISHED ALUMINUM GUTTER AND DOWNSPOUT
- 5 CAST IN PLACE CONCRETE SLAB, SEE CIVIL DRAWINGS
- 6 DIRECT APPLIED FINISH SYSTEM, PAINTED
- 7 CONTROL JOINT, TYP.
- 8 PAINTED METAL GUARDRAIL
- 9 CONCRETE STAIR, SEE CIVIL DRAWINGS
- 10 PREFINISHED METAL LOUVER, SEE MECHANICAL DRAWINGS
- 11 GALVANIZED METAL CHAIN LINK FENCING SYSTEM
- 12 SLOPED EARTH - SEE CIVIL DRAWINGS
- 13 PAINTED CAST-IRON DOWNSPOUT BOOT - 24"
- 14 THERMOPLASTIC POLYOLEFIN MEMBRANE ROOFING SYSTEM
- 15 CONCRETE RAMP, SEE CIVIL DRAWINGS
- 16 WALL PACK, SEE ELECTRICAL DRAWINGS
- 17 3'-0" x 6'-0" GALVANIZED CHAIN LINK LOCKABLE GATE
- 18 ALUMINUM WINDOW SYSTEM

GENERAL NOTES - EXTERIOR ELEVATIONS

- A. REF CIVIL DRAWINGS FOR GRADING.
- B. REF A-300 DRAWINGS FOR ADDITIONAL EXTERIOR DETAILS NOT REFERENCED ON THIS SHEET.
- C. REF A-600 DRAWINGS FOR EXTERIOR FRAME TYPES.
- D. ALL EXTERIOR WINDOWS THAT OPEN INTO AN ADJACENT PATH OF TRAVEL, SHALL PROJECT NO MORE THAN 4" MAXIMUM



WDG ARCHITECTS ENGINEERS
821 BARONNE ST.
NEW ORLEANS, LA 70113
PHONE (504) 754-5280
FAX (504) 754-5275



**GREATER ST. STEPHEN MINISTRIES
ELJEANNETTE WHITE HELPING HANDS PARENT
CHILD CENTER - PRICING SET**

9661 LAKE FOREST BLVD
NEW ORLEANS, LA 70127

THE DESIGN CONCEPTS REPRESENTED IN THIS DOCUMENT ARE SPECIFICALLY FOR THIS PROJECT. INFORMATION CONTAINED HEREIN IS THE SOLE PROPERTY OF WDG ARCHITECTS ENGINEERS AND SHALL NOT BE TRANSFERRED TO ANY OTHER DOCUMENTS, USED FOR ANY OTHER PURPOSE OR BE CONVEYED TO THIRD PARTIES IN ANY FORM WHATSOEVER WITHOUT THE EXPRESS WRITTEN CONSENT OF WDG ARCHITECTS ENGINEERS.

MARK	DATE	DESCRIPTION
	10/14/20	PRICING SET

SHEET ISSUED: 10/14/20
WDG PROJECT NO.: 15-018

© 2017 BY:
WDG ARCHITECTS ENGINEERS, LLC.

SHEET TITLE:
ELEVATIONS,
EXTERIOR

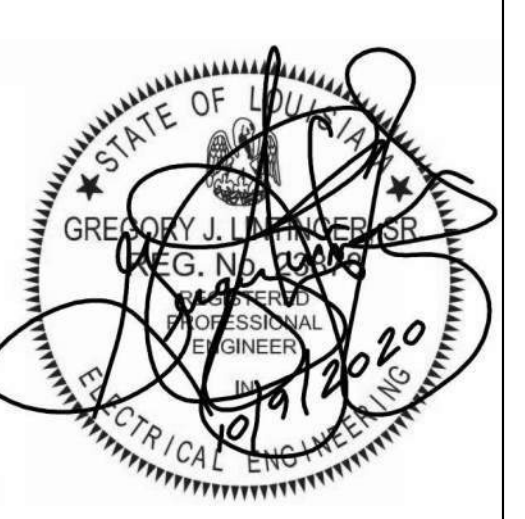
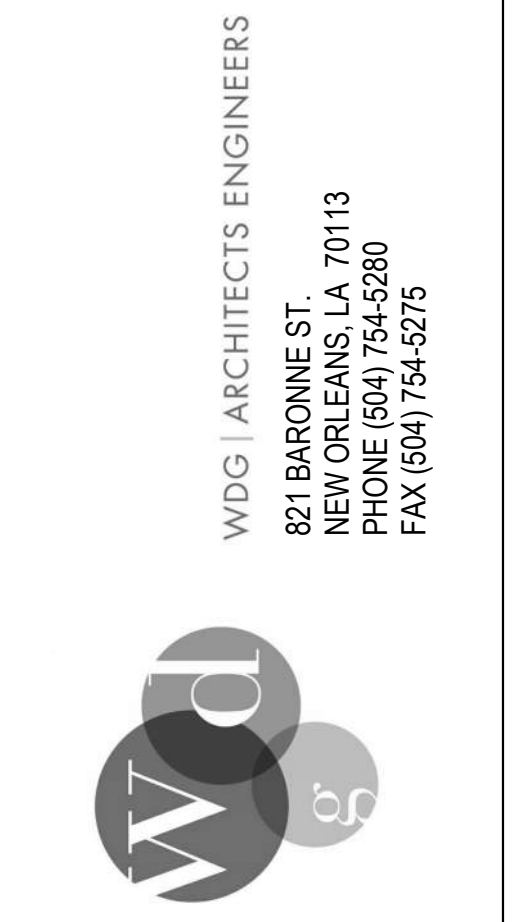
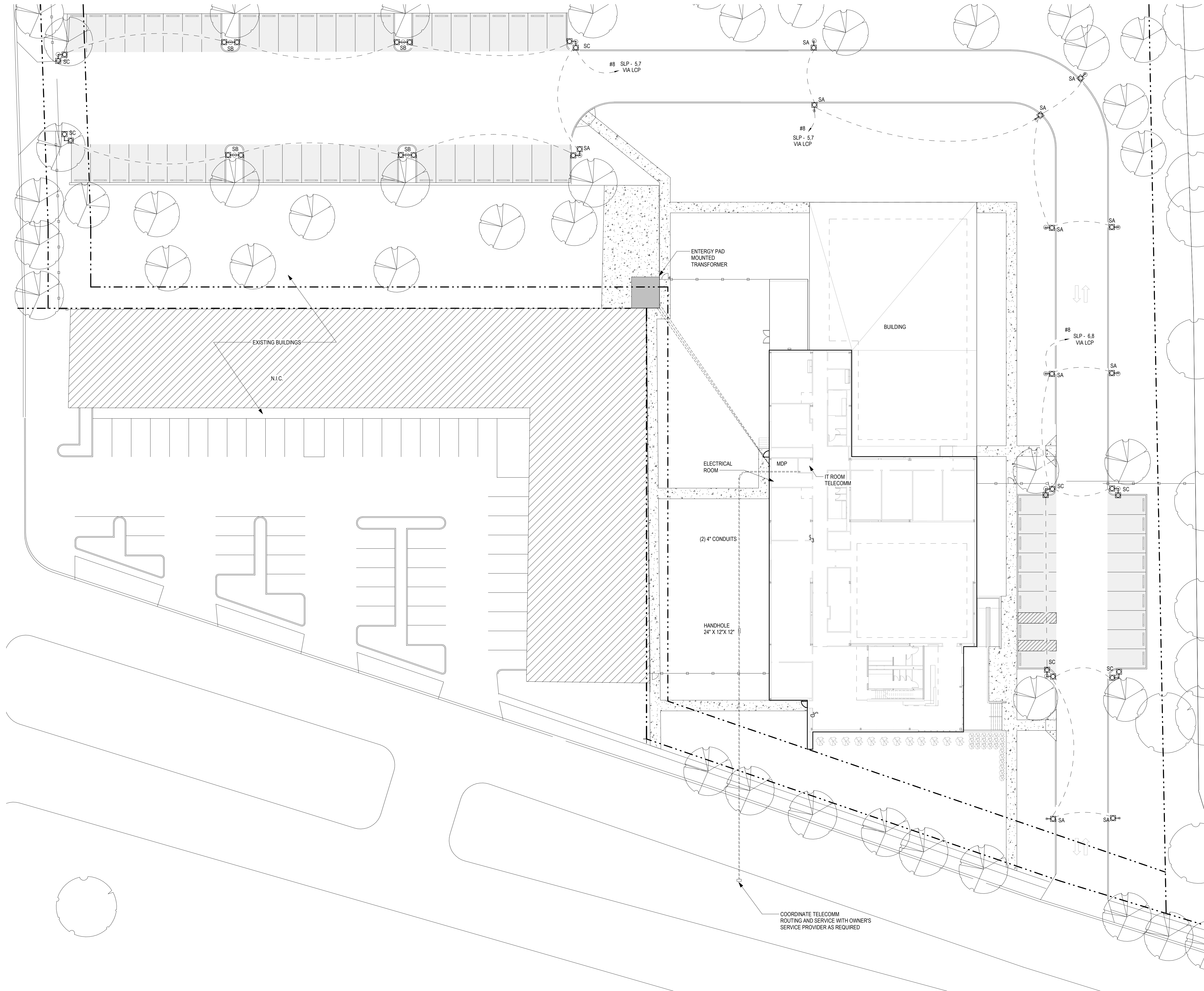
SHEET NUMBER:

A201

Site Lighting Fixture Schedule							
TYPE	WATTAGE	LUMENS	DESCRIPTION	MANUFACTURER	CATALOG NO.	REMARKS	Count
SA	106	12600 lm	SITE POLE LUMINAIRE LED, 25 FT ROUND TAPERED POLE, BRONZE FINISH	ECOFORM		PARKING	20
SB	212	12600 lm	SITE POLE LUMINAIRE LED -180DEG LED, 25 FT ROUND TAPERED POLE, BRONZE FINISH	ECOFORM		PARKING- LUMENS EACH FIXTURE	8
SC	212	12600 lm	SITE POLE LUMINAIRE LED -90DEG LED, 25 FT ROUND TAPERED POLE, BRONZE FINISH	ECOFORM		PARKING- LUMENS EACH FIXTURE	8

SITE LIGHTING FIXTURE SCHEDULE NOTES:

1. VERIFY AND PROVIDE CONCRETE POLE BASE, MOUNTING BOLTS, MOUNTING HARDWARE FOR ALL FIXTURES AS NECESSARY FOR A COMPLETE SYSTEM.
2. VERIFY ALL COLORS AND FINISHES PRIOR TO ORDERING.
3. PROVIDE GROUND ROD AND EFFECTIVE GROUNDING MEANS FOR ALL POLES.



**GREATER ST. STEPHEN MINISTRIES
ELJEANNETTE WHITE HELPING HANDS PARENT
CHILD CENTER**
9661 LAKE FOREST BLVD
NEW ORLEANS, LA 70127

THE DESIGN CONCEPTS REPRESENTED IN THIS DOCUMENT ARE SPECIFICALLY FOR THIS PROJECT. INFORMATION CONTAINED HEREIN IS THE SOLE PROPERTY OF WDG ARCHITECTS ENGINEERS AND SHALL NOT BE TRANSFERRED TO ANY OTHER DOCUMENTS, USED FOR ANY OTHER PURPOSE OR BE CONVEYED TO THIRD PARTIES IN ANY FORM WHATSOEVER WITHOUT THE EXPRESS WRITTEN CONSENT OF WDG ARCHITECTS ENGINEERS.

10/9/2020 PRICING SET

MARK DATE DESCRIPTION

SHEET ISSUED: 10/9/20

WDG PROJECT NO.: 15-018

© 2017 BY:
WDG ARCHITECTS ENGINEERS, LLC.

SHEET TITLE:
ELECTRICAL SITE PLAN

SHEET NUMBER:

E101

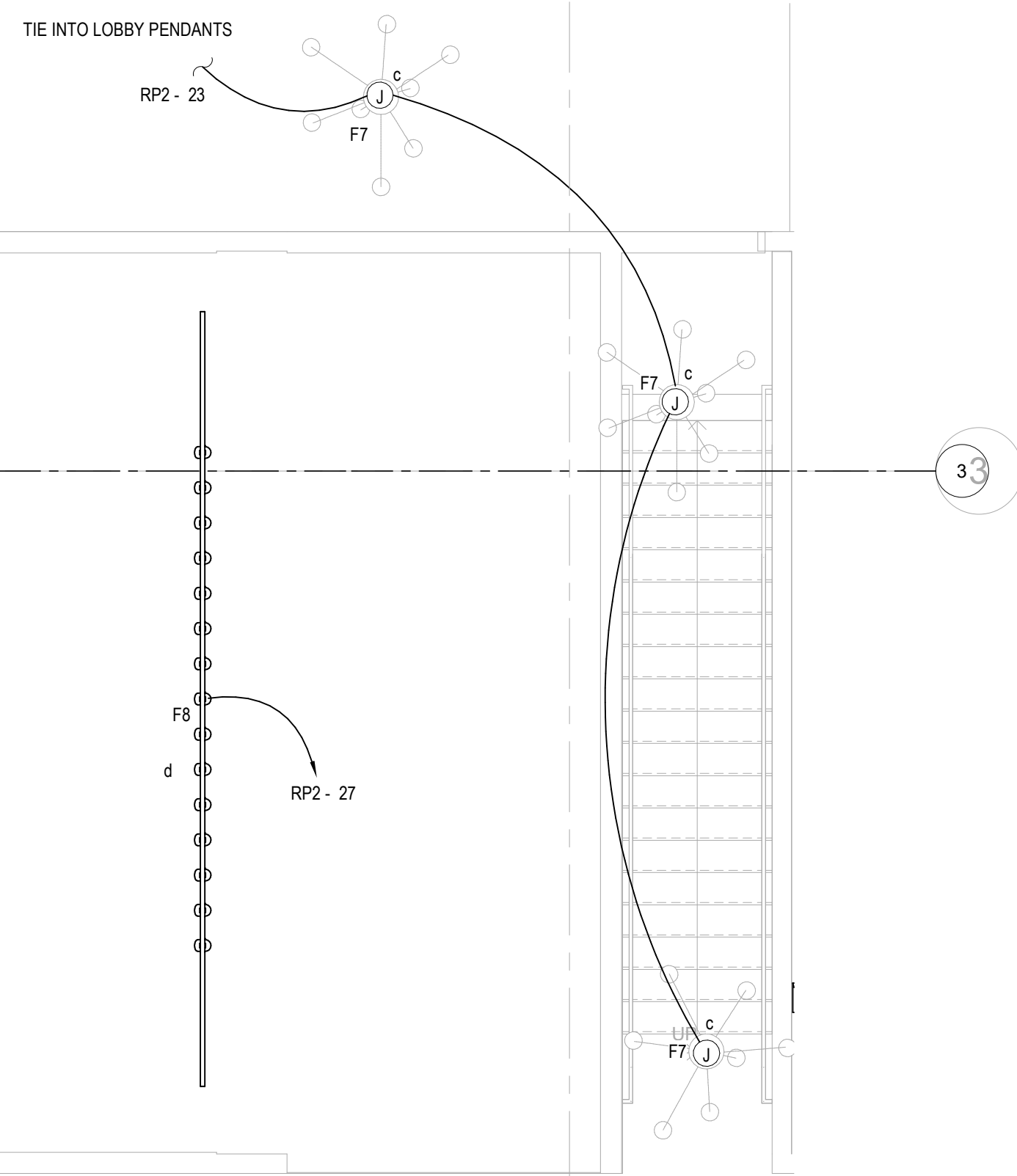
GENERAL ELECTRICAL NOTES:

- A. THESE PLANS ARE DIAGRAMMATIC IN NATURE. THE EXACT LOCATION OF DEVICES AND EQUIPMENT MAY DEVIATE FROM THE LOCATION INDICATED ON THESE DRAWINGS. THE CONTRACTOR SHALL BE PREPARED TO MAKE ALTERATIONS TO NEW SERVICES TO FIT ACTUAL JOB CONDITIONS.
- B. IF THE CONTRACTOR DOES NOT CLEARLY UNDERSTAND THESE PLANS, OR IS NOT SURE OF THEIR MEANING, HE SHOULD OBTAIN THE ENGINEER'S WRITTEN EXPLANATION AND INTERPRETATION PRIOR TO SUBMITTING HIS BID. THE CONTRACTOR WILL BE HELD RIGIDLY TO THE INTERPRETATION OF THE ENGINEER.
- C. ALL ELBOWS, FITTINGS, ETC. IN ELECTRICAL ARE NOT NECESSARILY INDICATED TO CLEAR ALL OBSTRUCTIONS.
- D. BECAUSE OF LIMITED SPACE AVAILABLE TO INSTALL THE ELECTRICAL WORK, COORDINATION BETWEEN THE VARIOUS TRADES IS OF THE UTMOST IMPORTANCE.
- E. ALL LIGHTING CIRCUITS SHALL RUN THRU THE LIGHTING CONTROL PANEL INCLUDING INTERIOR, EXTERIOR, SIGNAGE AND SITE LIGHTING.

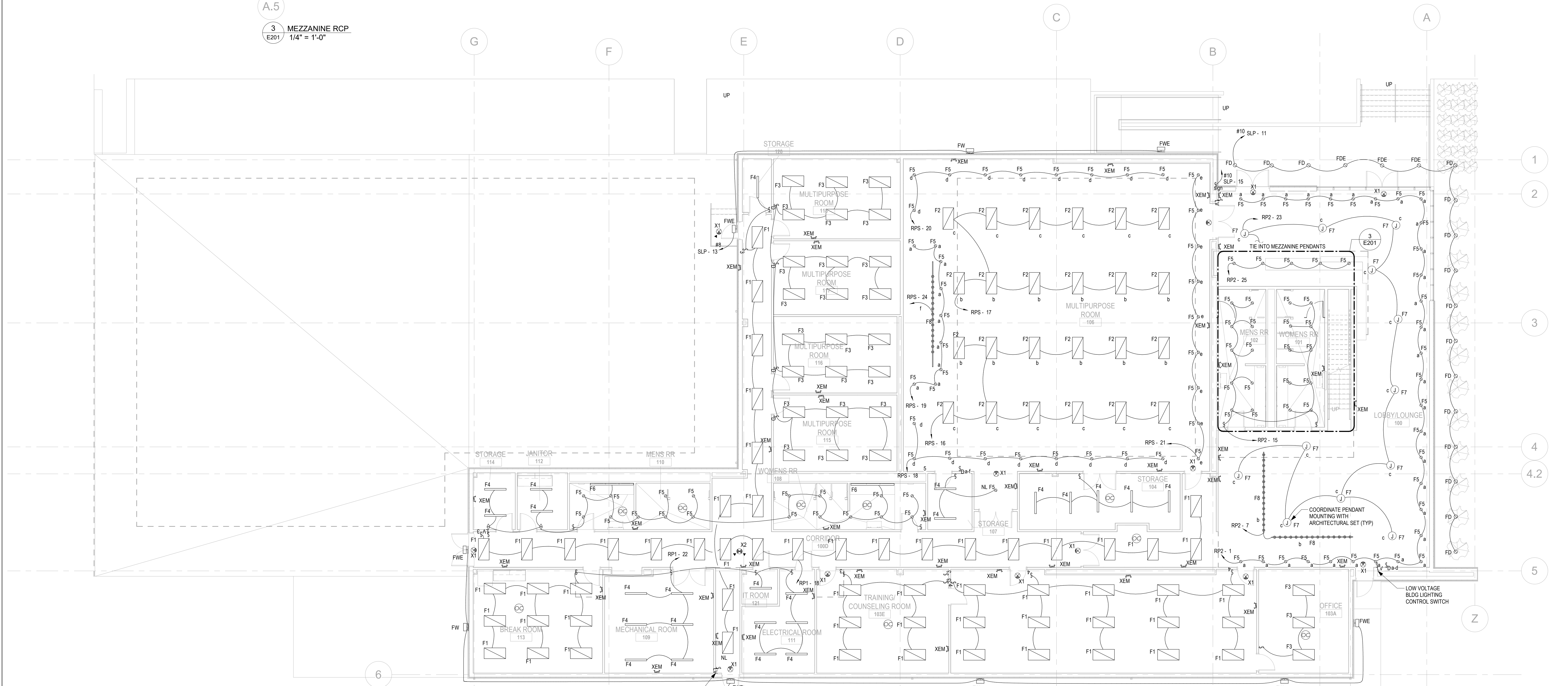
TYPE	WATTAGE	LUMENS	DESCRIPTION	MANUFACTURER	CATALOG NO.	REMARKS	Count
F1	59	5356 lm	2X4 RECESSED LED TROFFER	WILLIAMS	AT2-24-L55-835	3500K, CORRIDORS/OFFICES	58
F2	59	5356 lm	2X4 RECESSED LED TROFFER- DIMMABLE	WILLIAMS	AT2-24-L55-835-DIM	3500K, MULTIPURPOSE DIMMED	24
F3	70	6903 lm	2X4 RECESSED LED TROFFER- HIGH LUMENS	WILLIAMS	AT2-24-L70-835	CLASSROOMS	27
F4	56	5073 lm	1X4 INDUSTRIAL LED- SUSPENDED	WILLIAMS	GLN4-	STORAGE ROOMS	24
F5	14	1385 lm	6" RECESSED LED DOWNLIGHT	WILLIAMS	6DR-TL-15	3500K	145
F6	64	5800 lm	DECORATIVE LED LINEAR VANITY	WILLIAMS		ABOVE MIRROR	2
F7	44	2532 lm	ARCHITECTURAL PENDANT MOUNTED CYLINDER, LED, STEM MOUNTED	SUSUO	SSC422806	ATRIUM	11
F8	500	1800 lm	LED TRACK LIGHTING, DIMMABLE BULBS				4
FD	17	1750 lm	8" RECESSED LED SPOTLIGHT, WET LOCATION	WILLIAMS			17
FDE	17	1750 lm	8" RECESSED LED SPOTLIGHT, WET LOCATION, EMERGENCY BATTERY	WILLIAMS			3
FW	24	5500 lm	WALL PACK, LOW CUTOFF, LED, BRONZE HOUSING	WILLIAMS		EXTERIOR WALLS	4
FWE	24	5500 lm	WALL PACK, LOW CUTOFF, LED, BRONZE HOUSING, EMERGENCY BATTERY	WILLIAMS		EGRESS DOORS	5
X1	3		EXIT SIGN, EDGE LIT RED, UNIVERSAL MOUNTING KIT	EELP	EDG SERIES	EGRESS DOORS	13
X2	3		EXIT SIGN, EDGE LIT RED, DOUBLE-SIDED, UNIVERSAL MOUNTING KIT	EELP	EDG SERIES	EGRESS DOORS	1
XEM	5		LOW PROFILE LED EMERGENCY BATTERY UNIT, WHITE HOUSING	EELP	EDG SERIES	EGRESS PATHWAYS	41

LIGHTING FIXTURE SCHEDULE NOTES:

1. IF SHOWN ON PLANS AS CEILING MOUNTED EXIT SIGN, AND CEILING HEIGHT IS GREATER THAN 9'-0", MOUNT EXIT SIGNS CENTER LINE 12" ABOVE DOOR FRAME, OR 7'-6" A.F.F. ON WALL.
2. VERIFY AND PROVIDE MOUNTING HARDWARE FOR ALL FIXTURES AS NECESSARY FOR A COMPLETE SYSTEM.
3. VERIFY ALL COLORS AND FINISHES PRIOR TO ORDERING.
4. FIXTURES MARKED WITH "NL" (NIGHT LIGHT) ARE TO BE UNSWITCHED AND REMAIN ON.

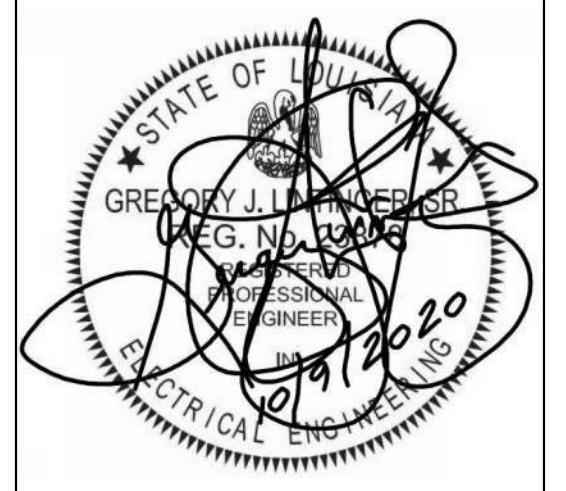


A.5
3 MEZZANINE RCP
E201 1/4" = 1'-0"



LOW VOLTAGE BLDG LIGHTING CONTROL SWITCH
#10 SLP-12

A.5
A.4
1 LIGHTING FLOOR PLAN
E201 1/8" = 1'-0"



**GREATER ST. STEPHEN MINISTRIES
ELJEANNETTE WHITE HELPING HANDS PARENT
CHILD CENTER**
9661 LAKE FOREST BLVD
NEW ORLEANS, LA 70127

THE DESIGN CONCEPTS REPRESENTED IN THIS DOCUMENT ARE SPECIFICALLY FOR THIS PROJECT. INFORMATION CONTAINED HEREIN IS THE SOLE PROPERTY OF WDG ARCHITECTS ENGINEERS AND SHALL NOT BE TRANSFERRED TO ANY OTHER DOCUMENTS, USED FOR ANY OTHER PURPOSE OR BE CONVEYED TO THIRD PARTIES IN ANY FORM WHATSOEVER WITHOUT THE EXPRESS WRITTEN CONSENT OF WDG ARCHITECTS ENGINEERS.

10/9/2020 PRICING SET
MARK DATE DESCRIPTION

SHEET ISSUED: 10/9/20
WDG PROJECT NO.: 15-018

© 2017 BY:
WDG ARCHITECTS ENGINEERS, LLC.

SHEET TITLE:
FLOOR PLAN -
LIGHTING

SHEET NUMBER:

E201