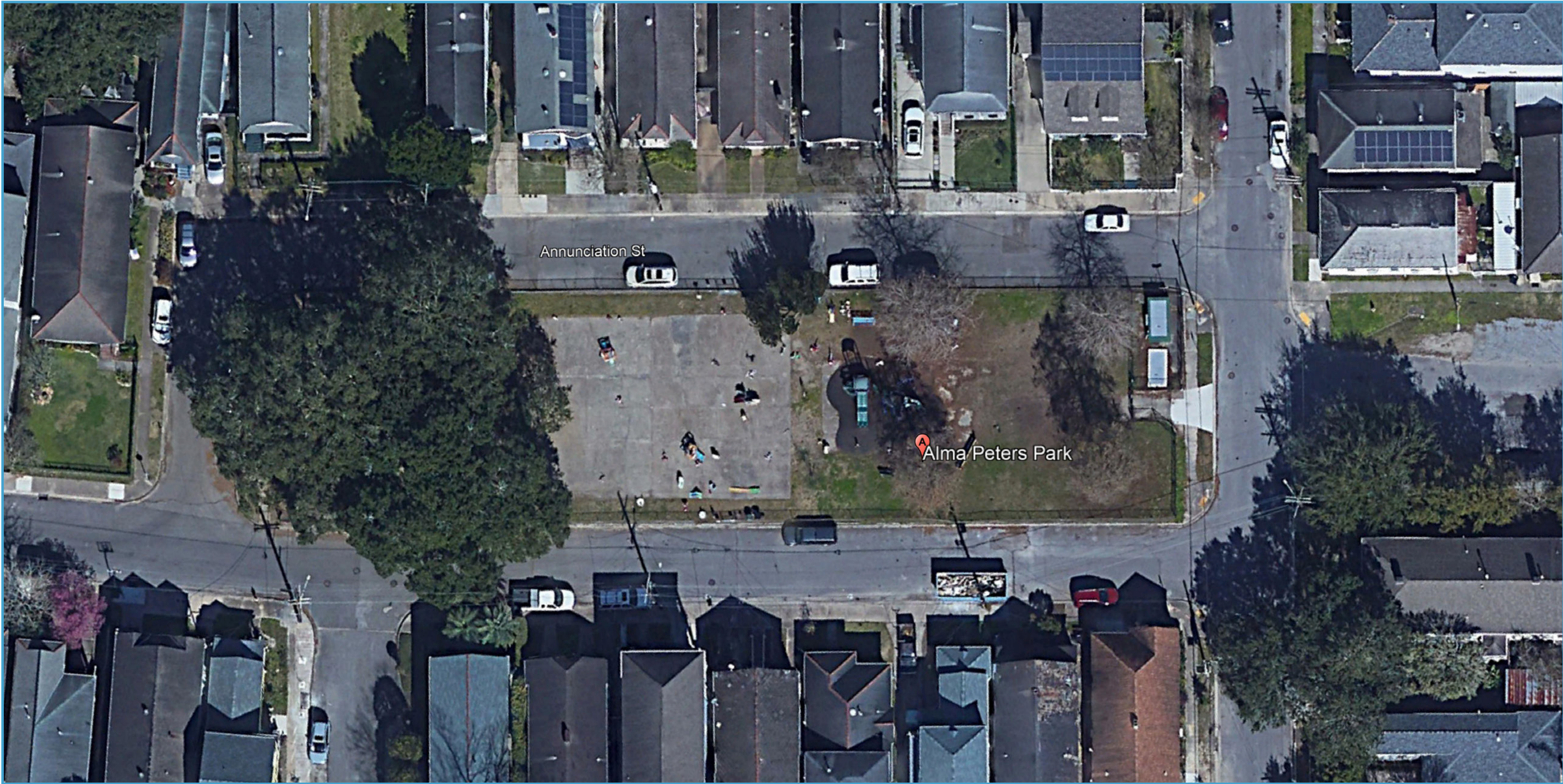


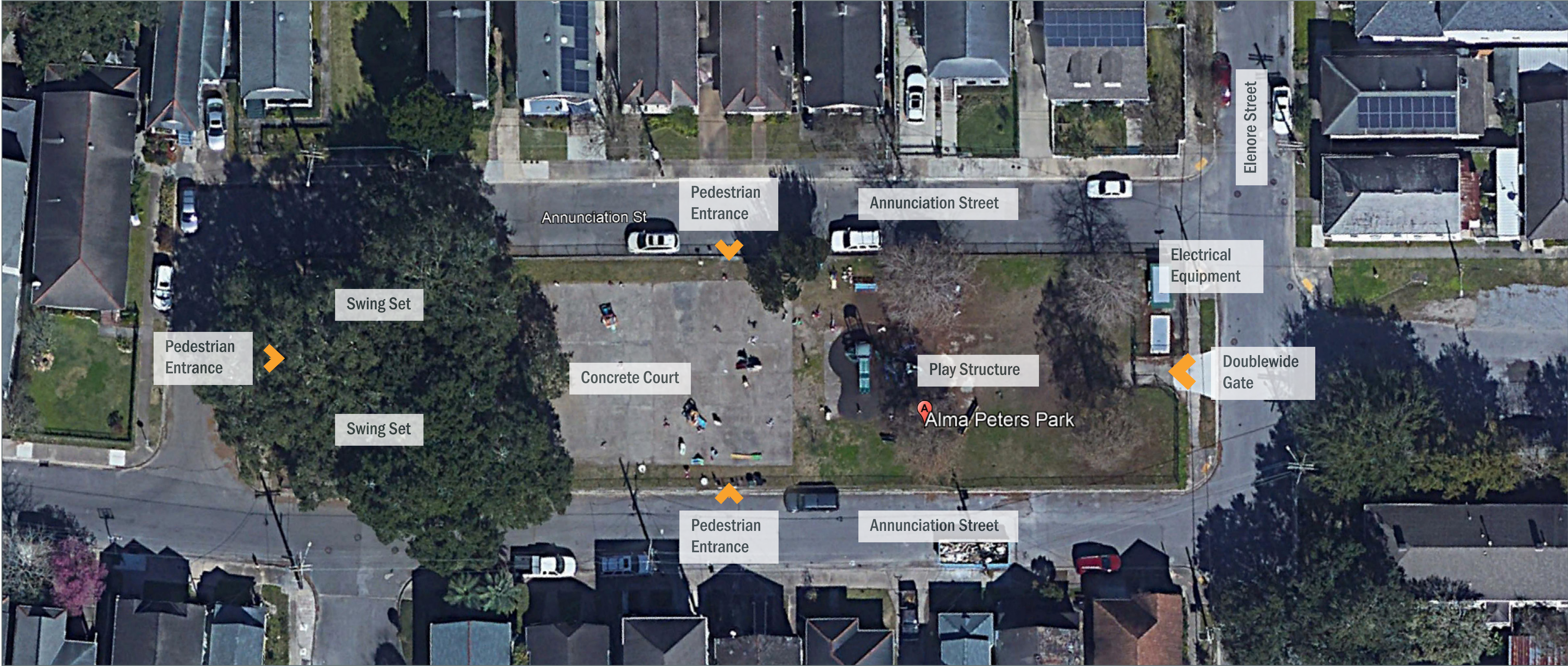
ALMA PETERS PLAYGROUND



City of New Orleans
Mayor LaToya Cantrell



ALMA PETERS PLAYGROUND: Existing Conditions



ALMA PETERS PLAYGROUND: Existing Conditions



Swing set on the south western part of the site



Entry gate from the south (river side) of the park



Play structure



Swing set on the north western part of the site

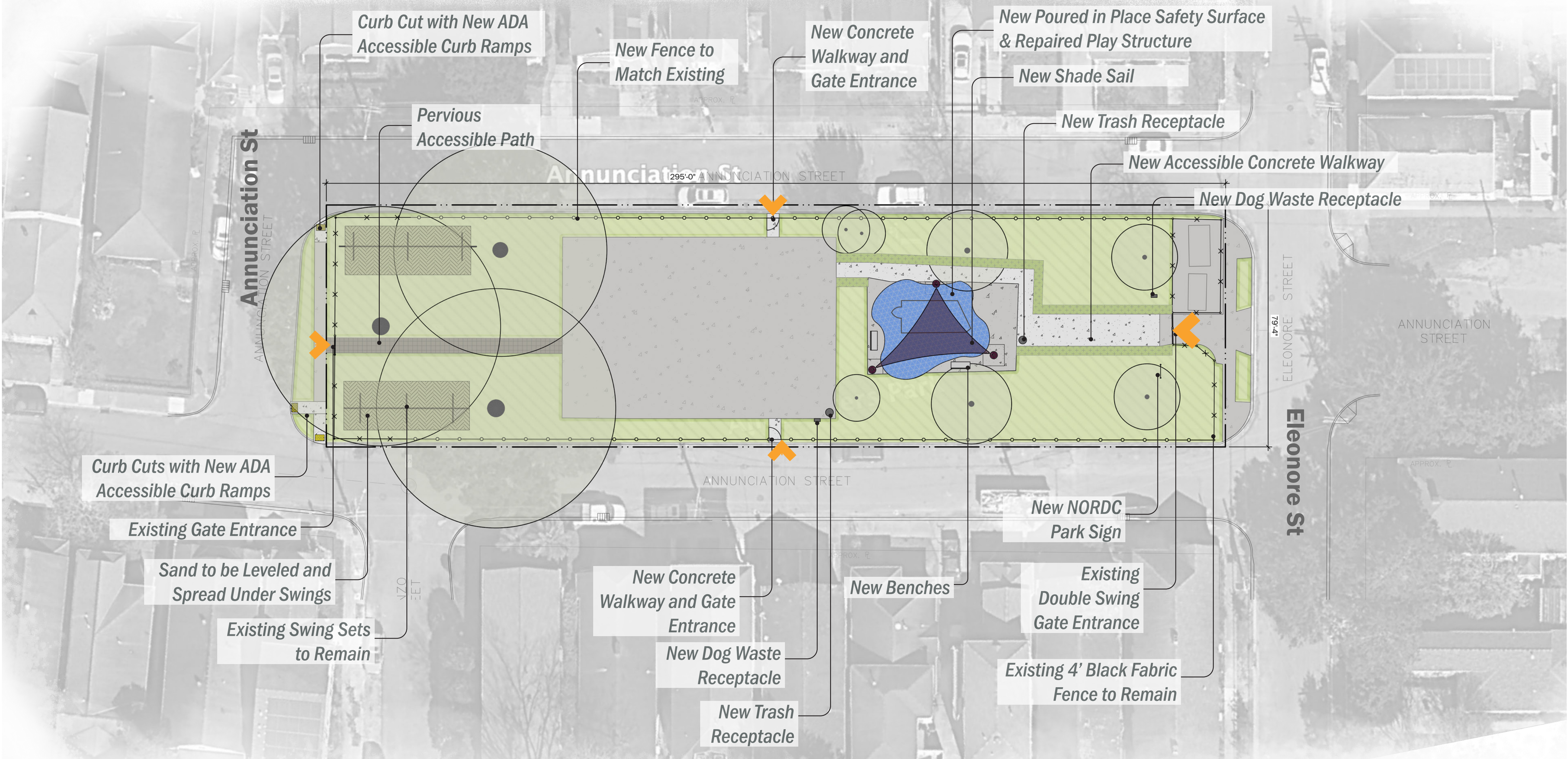


Court

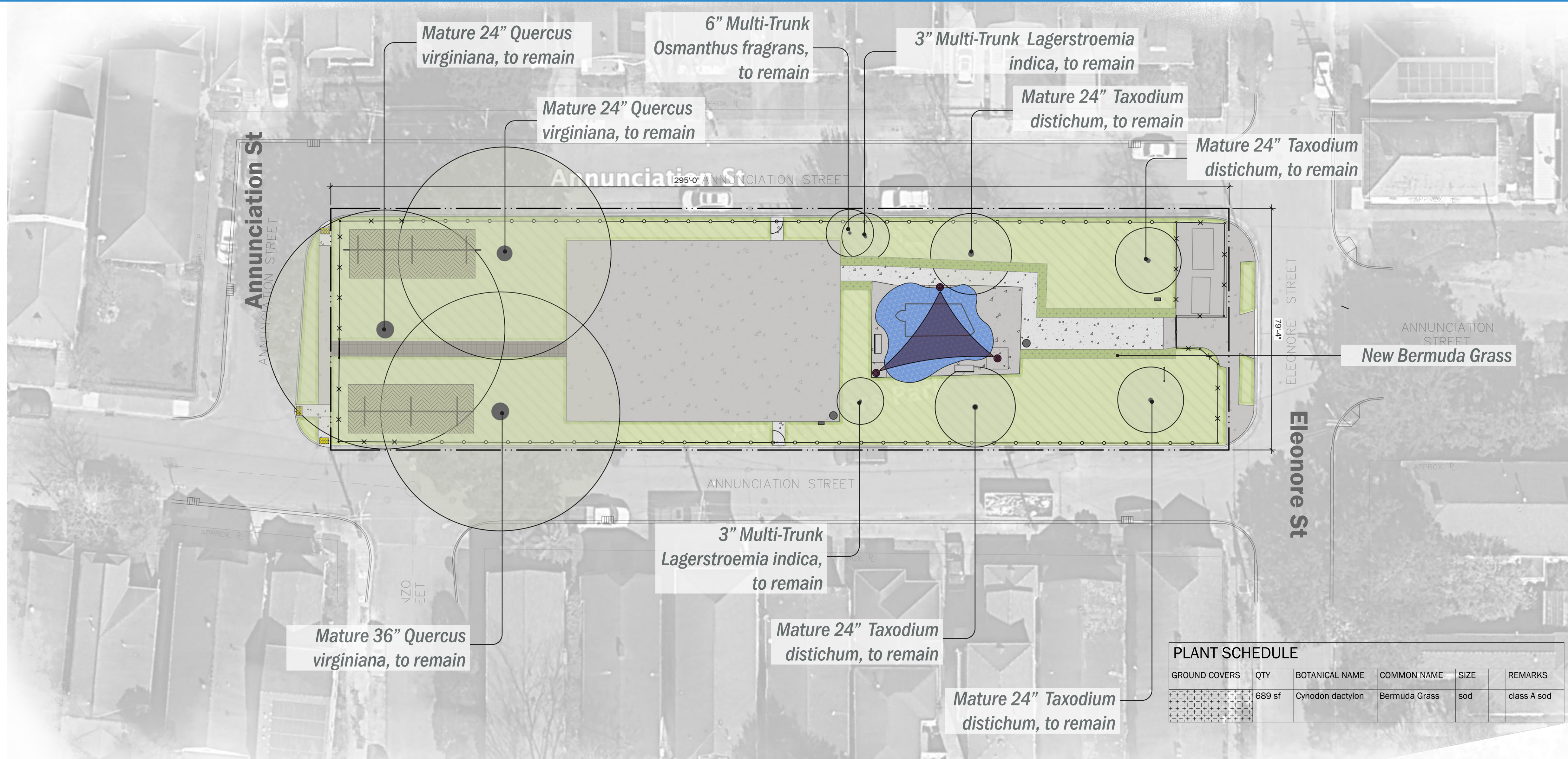


Perimeter Fencing

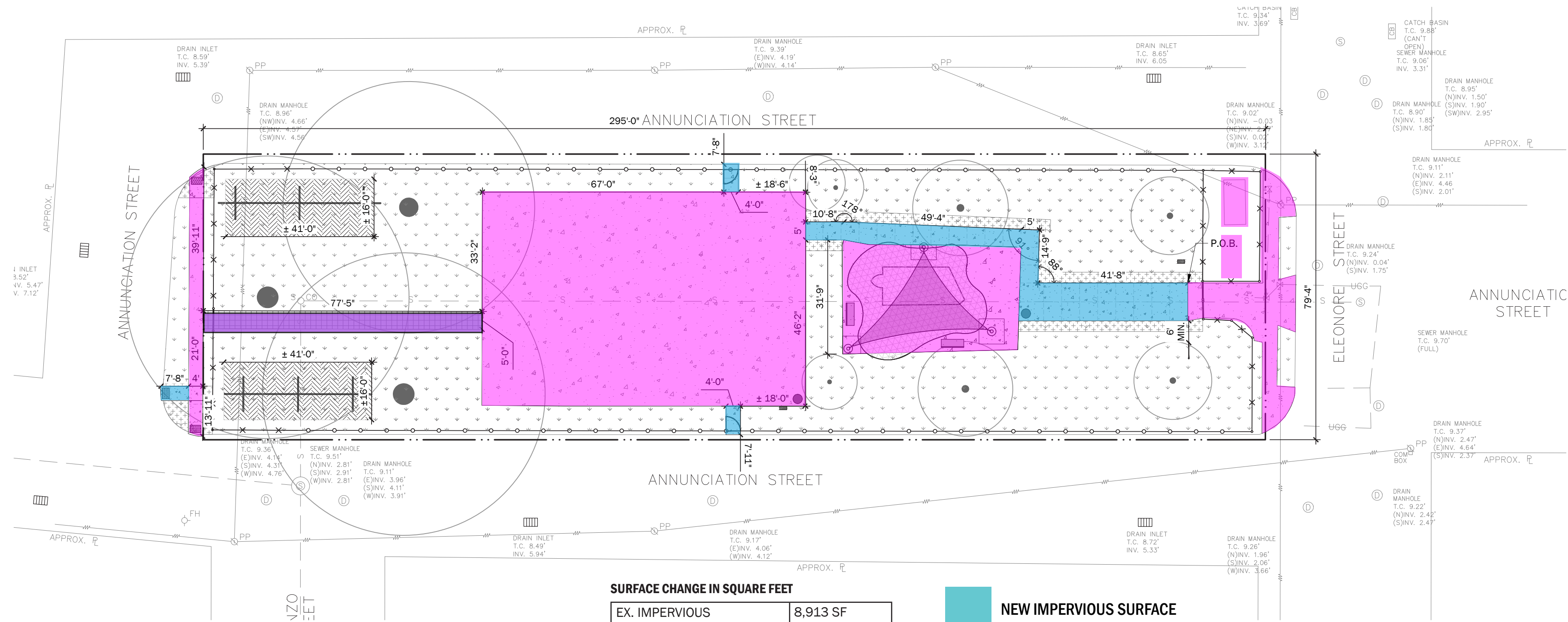
ALMA PETERS PLAYGROUND: Site Improvements Plan



ALMA PETERS PLAYGROUND: Landscape Plan



ALMA PETERS PLAYGROUND: Impervious Surfaces - existing and proposed



SURFACE CHANGE IN SQUARE FEET

EX. IMPERVIOUS	8,913 SF
NEW IMPERVIOUS	9,860 SF
EX. PERVIOUS	14,807 SF
NEW PERVIOUS	13,860 SF

- NEW IMPERVIOUS SURFACE
- NEW PERVIOUS SURFACE
- EX. IMPERVIOUS SURFACE

ALMA PETERS PLAYGROUND: Materials



Existing Play Structure



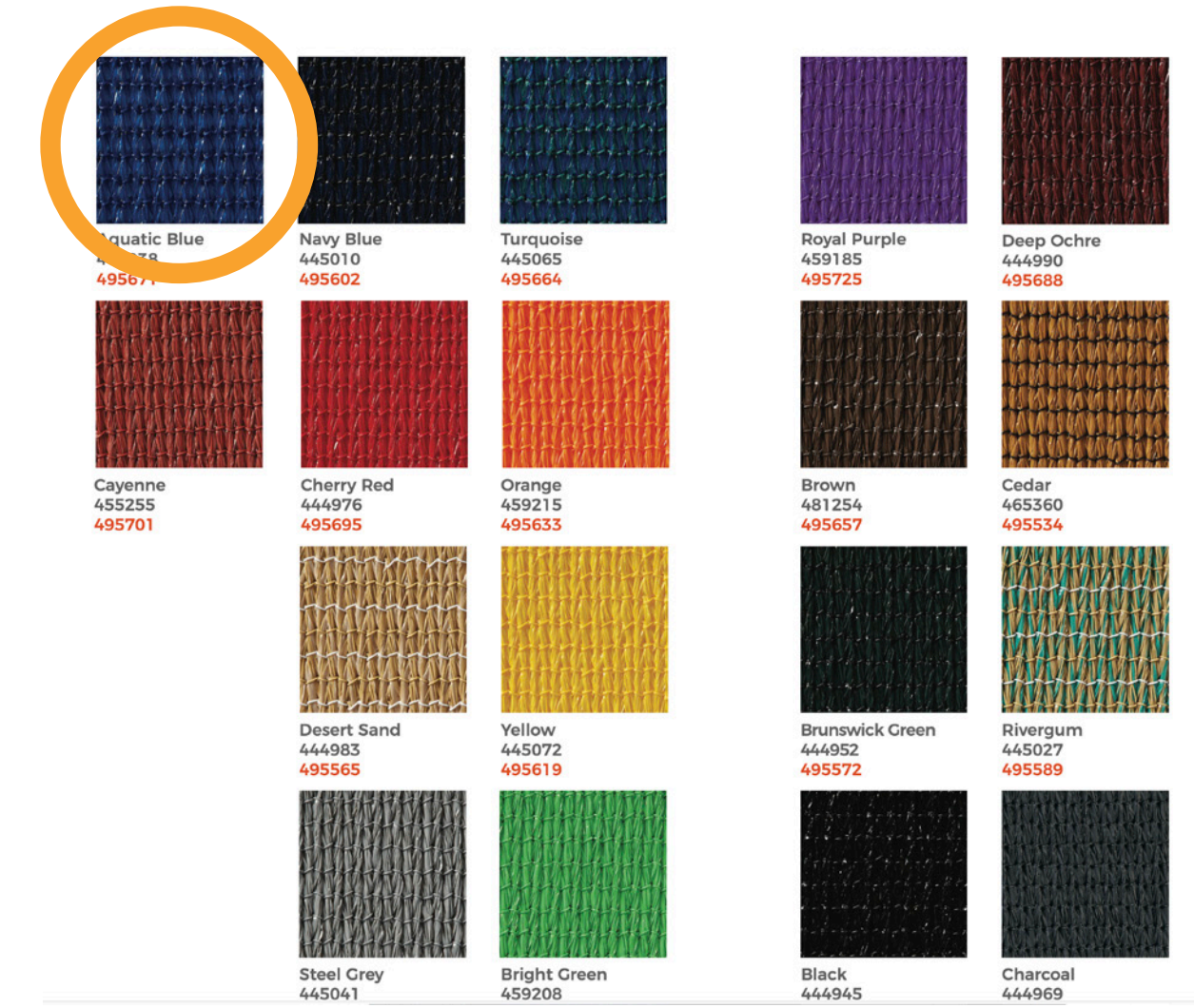
Example of Proposed Shade Sail



Shade Sail Post Color



50% Blue 50% Black
Safety Surface Color



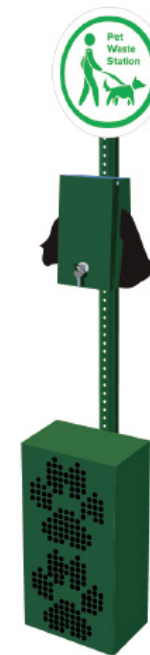
Shade Sail Fabric Color



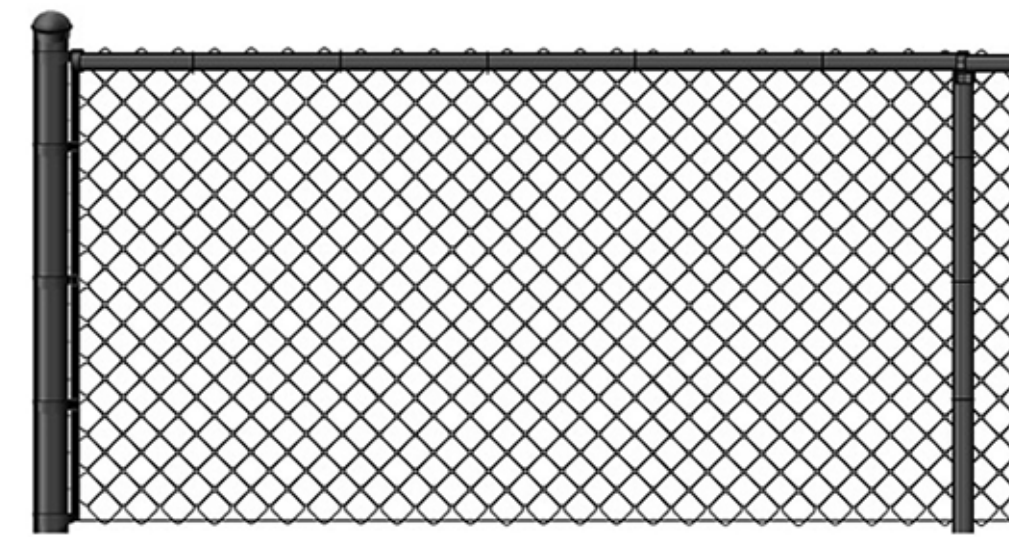
New Benches



New Trash Receptacles



New Pet Waste Station



New Black Vinyl Coated Fencing



New NORDC Playground Sign