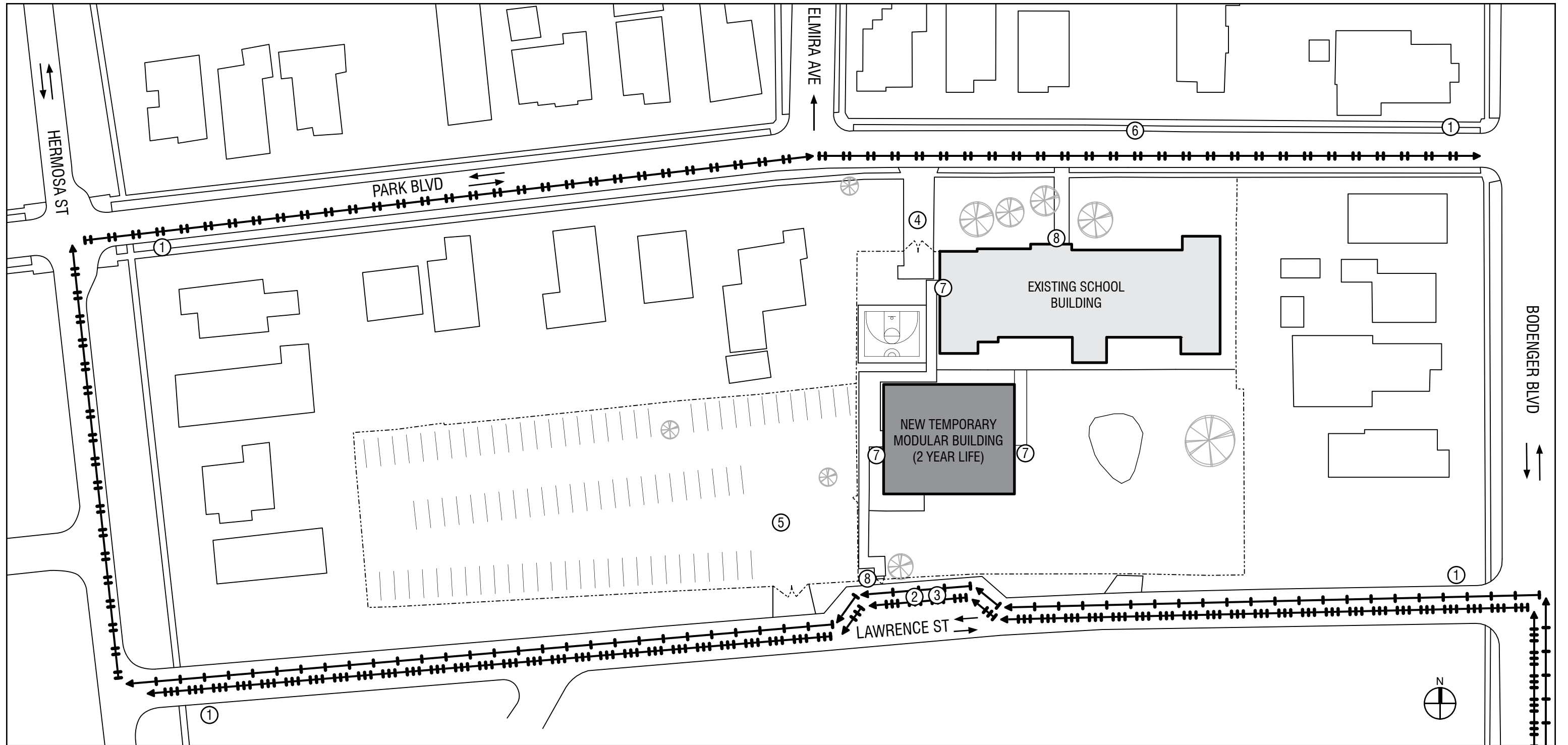





Existing Schwarz School Building  
 Area: 19,781 SF  
 Height: 30' / 2 FLOORS

New Modular Building  
 Area: 6,628 sf  
 Height: 15' / 1 FLOOR

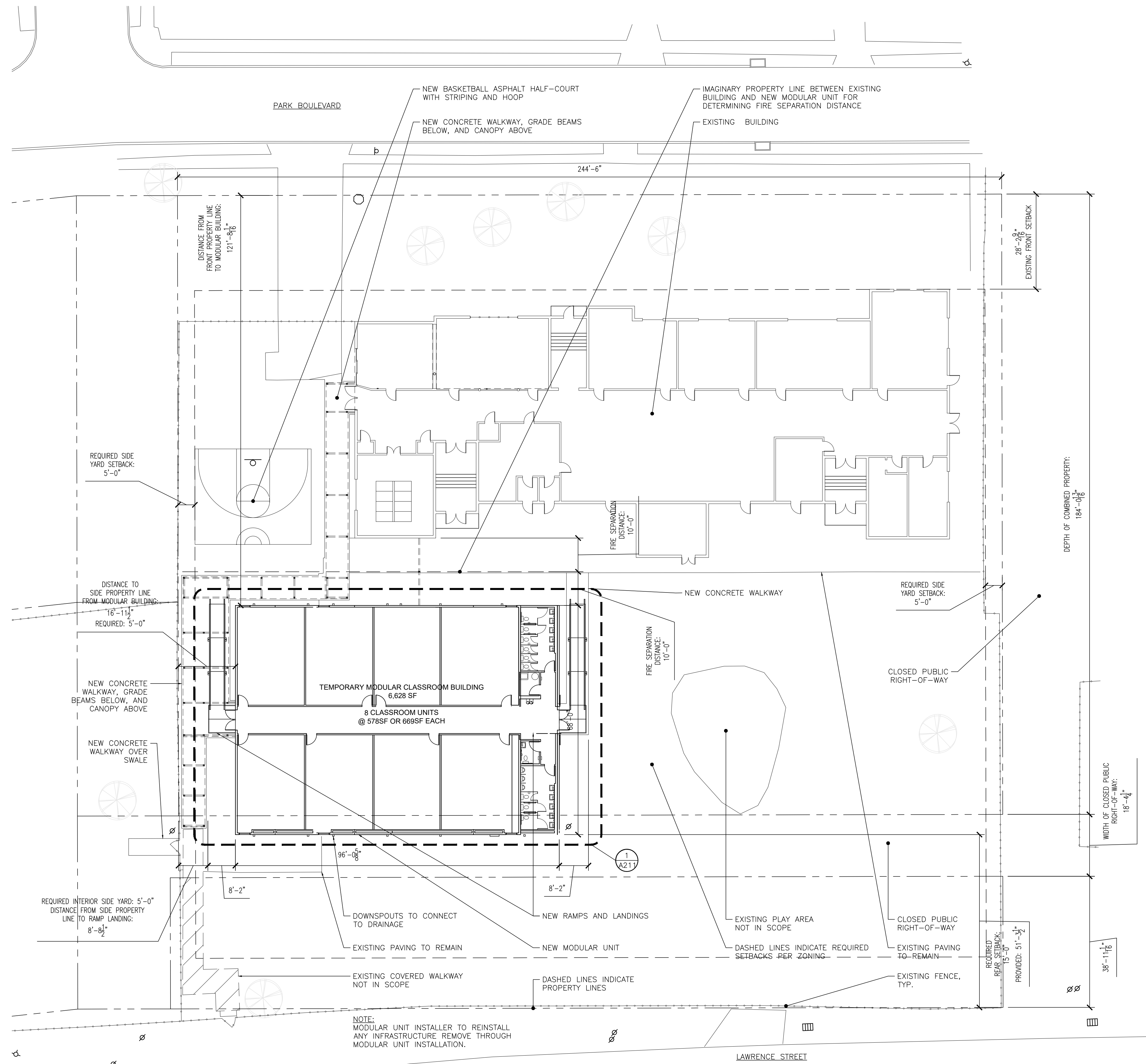


-  CARPOOL ROUTE
-  ALTERNATE CARPOOL ROUTE WHEN RAINING
-  SCHOOL BUS ROUTE

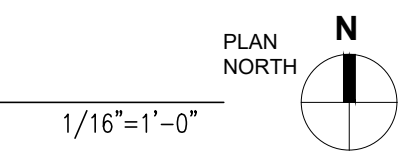
- ① SIGNAGE: SCHOOL ZONE, REDUCED SPEED LIMIT 20 MPH
- ② SUPERVISED STUDENT PICK UP & DROP OFF
- ③ SCHOOL BUS PICK UP & DROP OFF
- ④ LOADING ZONE
- ⑤ OFF-STREET PARKING (80)

- ⑥ ON-STREET PARKING (18)
- ⑦ ADA ENTRANCE
- ⑧ STUDENT ENTRANCE

Supervision and traffic control schedule:  
 Morning arrival:  
 7:20 am - 7:45 am  
 Afternoon dismissal:  
 Bus Riders: 3:45 pm, Depart 3:50 pm  
 Car Riders: 3:50 - 4:00 pm



2 CONSTRUCTION SITE PLAN  
A201



PERMIT DRAWING UPDATES	2020.4.16
ADDENDUM NO. 1	2020.1.24
NO.	REVISION/SUBMISSIONS DATE



**Mathes Brierre**  
ARCHITECTS

201 St. Charles Avenue, Forty First Floor  
New Orleans, Louisiana 70170-4100  
Voice: 504.586.9303 Fax: 504.582.1305  
www.mathesbrierre.com

PROJECT TITLE

**MODULAR UNIT  
INSTALL & LEASE  
AT  
SCHWARZ SCHOOL**

709 PARK BLVD.  
NEW ORLEANS, LA 70114

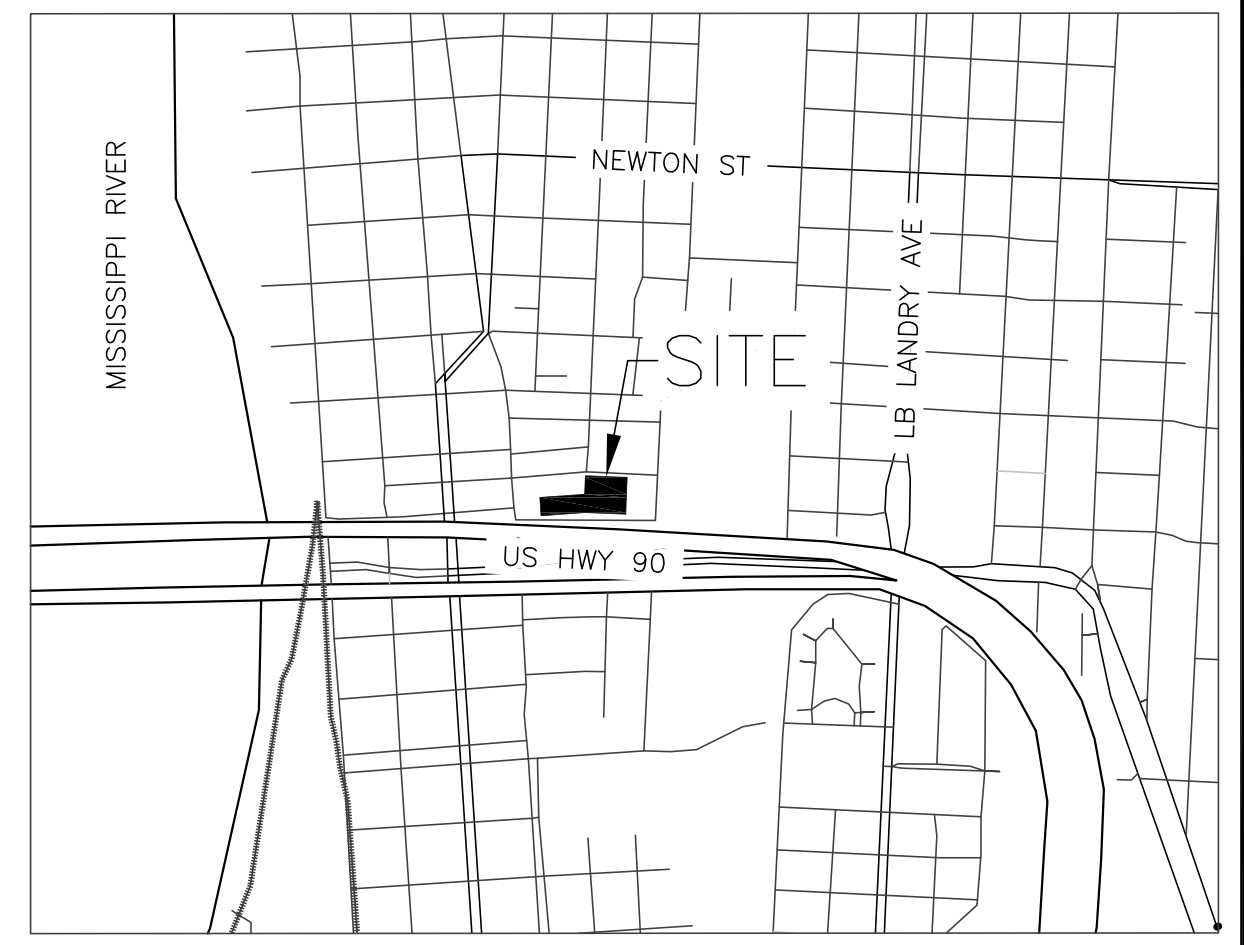
MBA PROJECT NO.  
11968

DESIGNED BY	AM	CHECKED BY	PP
DRAWN BY	SH/AM	DATE	01/22/2020
SHEET TITLE CONSTRUCT. SITE PLAN			
PROJECT NO.	20-FAC-0028	SHEET NO.	A201

LOTS 10, 11, 14, 15, 18, 19, 22, 23, 26, 27 SQUARE 253-B  
 LOTS 1-9, PT 10, PT 12 & 13, PT 13, 14-22, SQUARE 254-B  
 LOTS 1, 2, 3 & A FORMER ALLEYWAY, SQUARE 271-A  
 FIFTH DISTRICT  
 VERRET TRACT  
 ORLEANS PARISH  
 NEW ORLEANS, LA

LEGEND			
⊕	— LIGHT POLE	— WATER VALVE	
—	— GUY WIRE	— SIGN, POLE MOUNTED	
⊕	— POWER POLE	— SPOT ELEVATION	
⊕	— FIRE HYDRANT	●	— IRON ROD FOUND
⊕	— WATER METER	○	— IRON ROD SET
⊕	— SEWER MANHOLE	+	— CROSS FOUND
⊕	— SEWER CLEANOUT	+	— CROSS SET
⊕	— DRAIN MANHOLE	+	— MAG NAIL FOUND
⊕	— DRAIN CLEANOUT	□	— CATCH BASIN
⊕	— DROP INLET, ROUND	□	— MAILBOX
⊕	— DROP INLET, SQUARE	⊕	— TEL. #
⊕	— WATER MANHOLE	⊕	— TRAFFIC SIGNAL
⊕	— TELEPHONE MANHOLE	⊕	— TELEPHONE PEDESTAL
⊕	— TRAFFIC MANHOLE	⊕	— GAS VALVE
⊕	— POST	⊕	— GAS BOX
⊕	— GAS MANHOLE	⊕	— TRASH CAN
—	— OVERHEAD ELEC.	—	— BUILDING
—	— (SIZE) GRAB LINE	—	— TREE
—	— (SIZE) UG TELEPHONE	—	— LITTLE TREE
—	— (SIZE) GAS LINE	—	— PALM TREE
—	— (SIZE) WATER LINE		

SCALE: 1"=60' (12X18)  
 SCALE: 1"=30' (24X36)



MATERIALS KEYING/ GENERAL NOTES  
 NOTES:  
 1. THE LOCATIONS OF UNDERGROUND AND OTHER NONVISIBLE UTILITIES SHOWN HEREON HAVE BEEN PLOTTED BASED UPON DATA EITHER FURNISHED BY THE AGENCIES CONTROLLING SUCH DATA AND/OR OBTAINED FROM RECORDS MADE AVAILABLE TO US BY THE AGENCIES CONTROLLING SUCH RECORDS. WHERE FOUND, THE SURFACE FEATURES OF UTILITIES ARE SHOWN. THE ACTUAL NONVISIBLE LOCATIONS MAY VARY FROM THOSE SHOWN HEREON. EACH AGENCY SHOULD BE CONTACTED RELATIVE TO THE PRECISE LOCATION OF ITS UNDERGROUND INSTALLATIONS PRIOR TO ANY RELIANCE UPON THE ACCURACY OF SUCH LOCATIONS SHOWN HEREON. PRIOR TO EXCAVATION AND DIGGING CALL LA. ONE CALL. (1-800-272-3020).  
 2. NO TITLE RESEARCH OR UTILITY SERVITUDE RESEARCH WAS PERFORMED BY THE SURVEYOR.  
 3. AS PER FLOOD INSURANCE RATE MAP, COMMUNITY-PANEL NUMBER 22071C0233F, EFFECTIVE DATE SEPTEMBER 30, 2016, THE SITE IS IN ZONE AE (+1.0') AND 'X' (NO FLOOD ZONE).  
 4. ELEVATIONS AND BEARINGS SHOWN ARE BASED ON GPS MEASUREMENTS, LSU C4G NET, VRS, NORTH AMERICAN DATUM (1983) LAMBERT CONFORMAL CONIC PROJECTION, LOUISIANA SOUTH ZONE, STATE PLANE COORDINATE SYSTEM, US SURVEY FEET, NAVD88.  
 5. SOME FEATURES NOT DRAWN TO SCALE FOR CLARITY.  
 6. DRAINAGE BEHIND SCHOOL BUILDING OBSERVED TO NO LONGER BE A FUNCTIONING SYSTEM. VIDEO INSPECTION IS NECESSARY TO MAP THE NETWORK AND ASSESS THE CONDITION WITH CERTAINTY.

REFERENCE DRAWINGS:  
 1. "VERRET TRACT SUBDIVISION" BY CHARLES A. HARDIE, DATED MAY 23, 1923.  
 2. "VERRET TRACT SUBDIVISION" BY CHARLES A. HARDIE, DATED APRIL 27, 1937.  
 3. "PLAN SHOWING PROPOSED STREET EXCHANGE IN VERRET TRACT" BY DEPARTMENT OF PUBLIC STREETS, DATED APRIL 01, 1952.

NO.	REVISION/SUBMISSIONS	DATE

I HEREBY CERTIFY THIS PLAT REPRESENTS AN ACTUAL GROUND SURVEY MADE BY ME OR UNDER MY DIRECT SUPERVISION AND CONTROL AND MEETS THE REQUIREMENTS FOR THE STANDARDS OF PRACTICE AS FOUND IN LOUISIANA ADMINISTRATIVE CODE TITLE 46:IXI, CHAPTER 29 FOR A CLASS "B" SURVEY.

ROBERT MORA PE, PLS  
 PLS #5042  
 DECEMBER 20, 2019  
 (504) 533-8644  
 FIELD WORK COMPLETE  
 ON 12-20-19

**Mathes Brierre**  
 ARCHITECTS

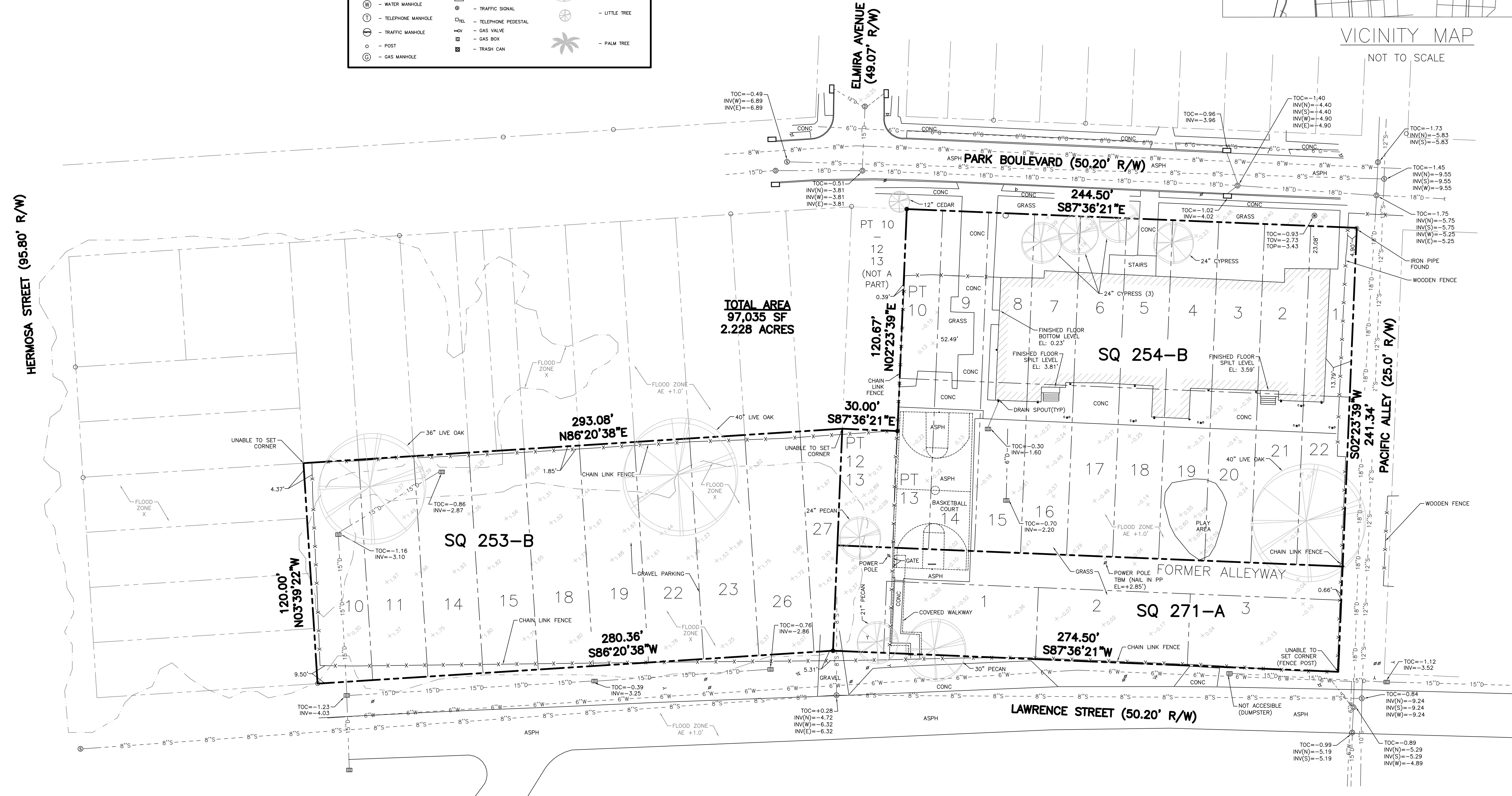
201 St. Charles Avenue, Forty First Floor  
 New Orleans, Louisiana 70170-4100  
 Voice: 504.586.9303 Fax: 504.582.1305  
 www.mathesbrierre.com

PROJECT TITLE  
**SITE  
 INFRASTRUCTURE  
 FOR MODULAR UNIT  
 AT  
 SCHWARZ SCHOOL**  
 709 PARK BLVD.  
 NEW ORLEANS, LA 70114  
 MBA PROJECT NO.  
 11968

DESIGNED BY	BATTURE	CHECKED BY	BATTURE
DRAWN BY	BATTURE	DATE	01/21/2020
SHEET TITLE	EXIST. CONDITIONS		
PROJECT NO.	20-FAC-0027	SHEET NO.	C-1

**BATTURE** L.L.C.  
 engineers + land surveyors

Call before you dig.  
 1-800-272-5880



TOTAL AREA  
 97,035 SF  
 2.228 ACRES

3110 PRESTON ST. NEW ORLEANS, LA 70115  
 PH: 504.533.8644  
 FAX: 504.336.2272  
 INFO@BATTURE-ENG.COM  
 WWW.BATTURE-ENG.COM