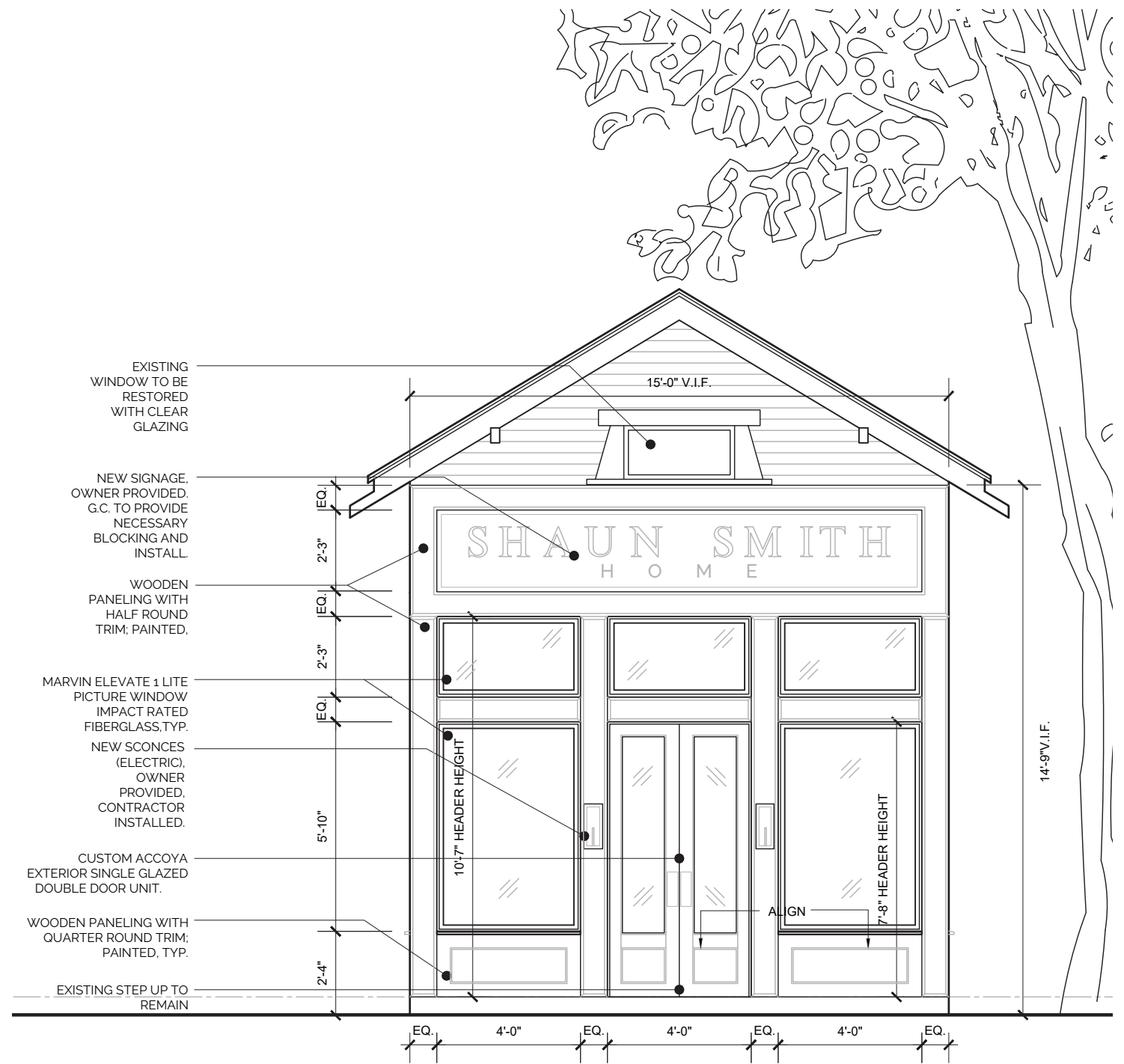
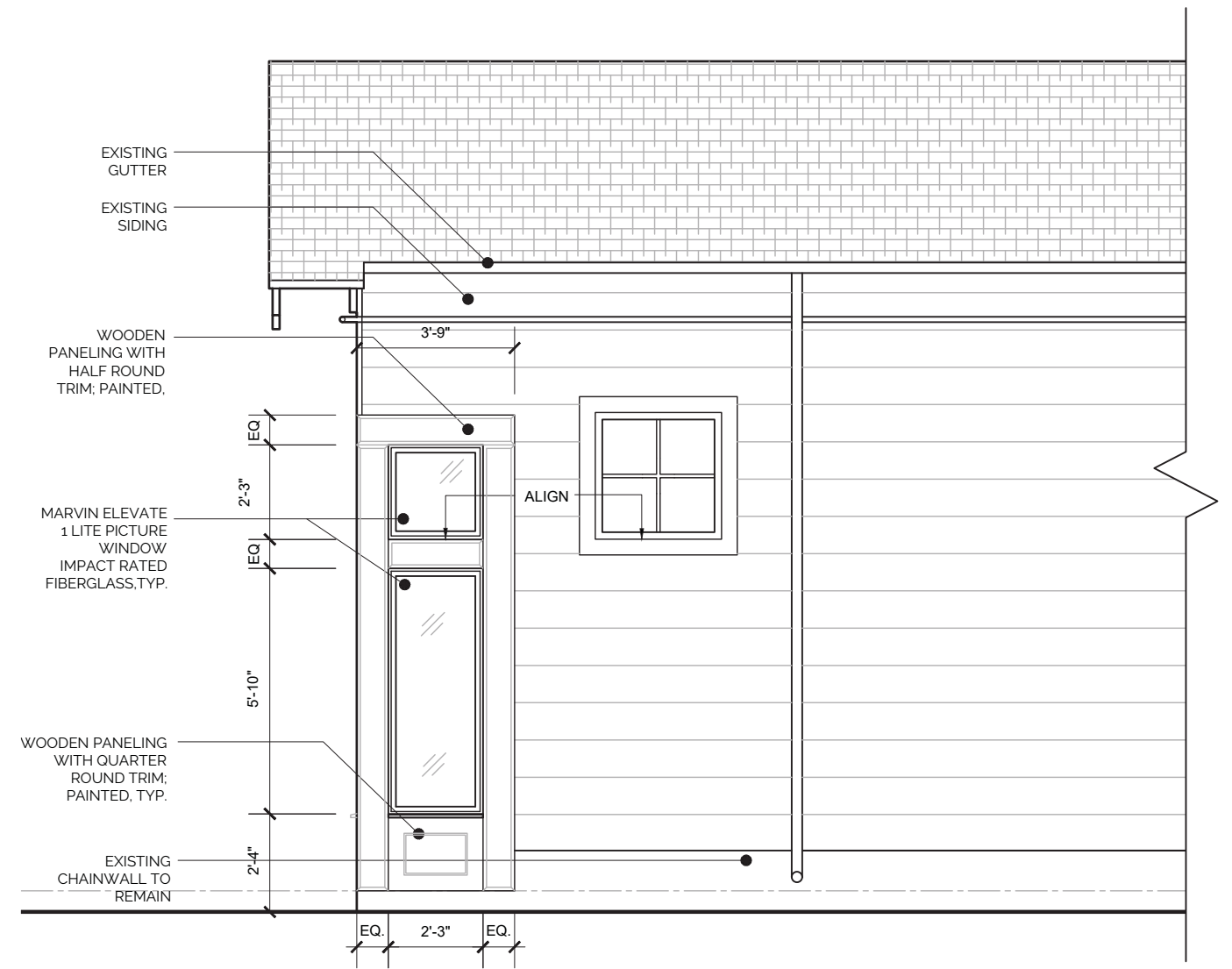


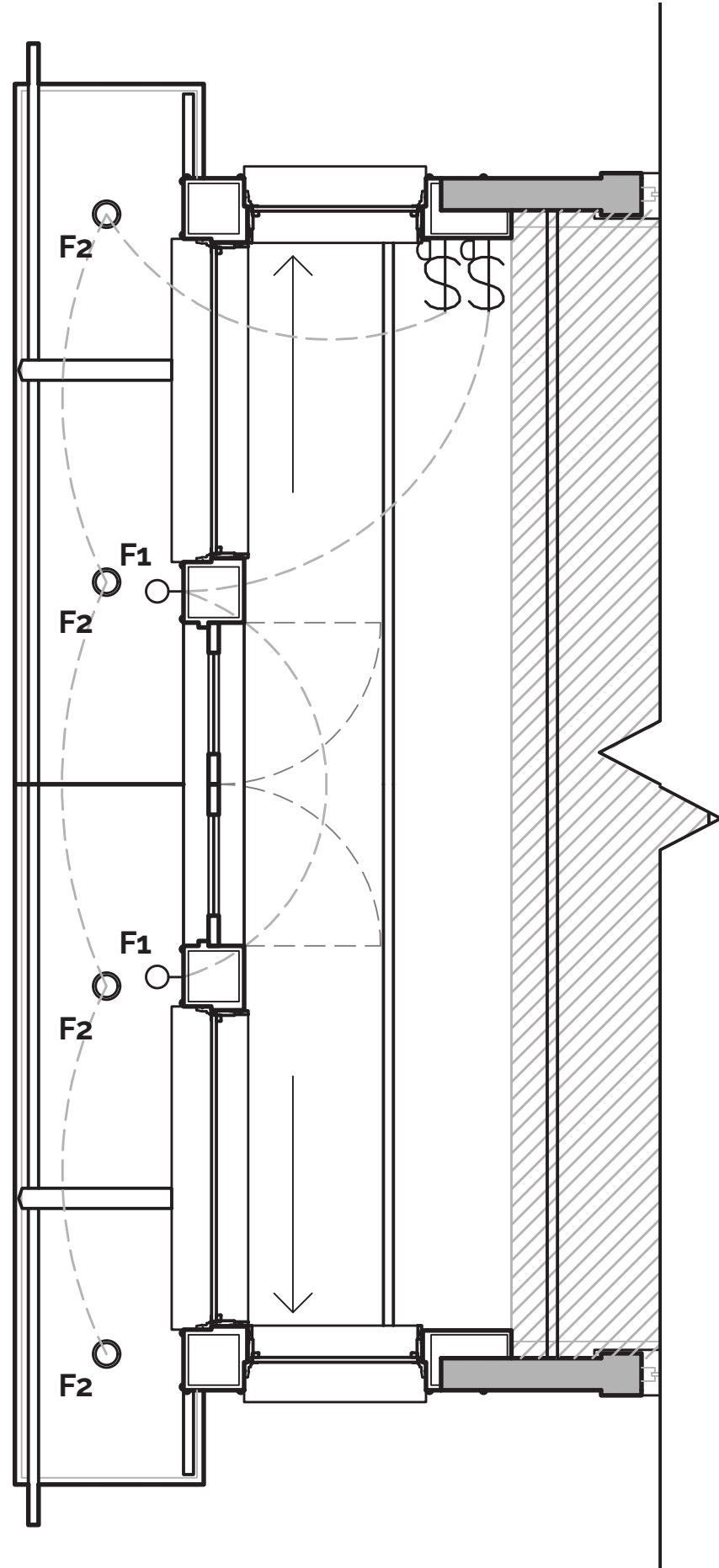
CONSTANTINOPLE STREET SIDE ELEVATION



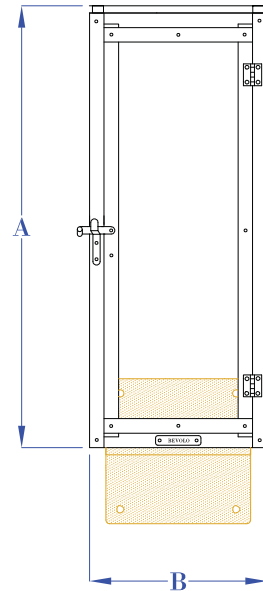
MAGAZINE STREET ELEVATION



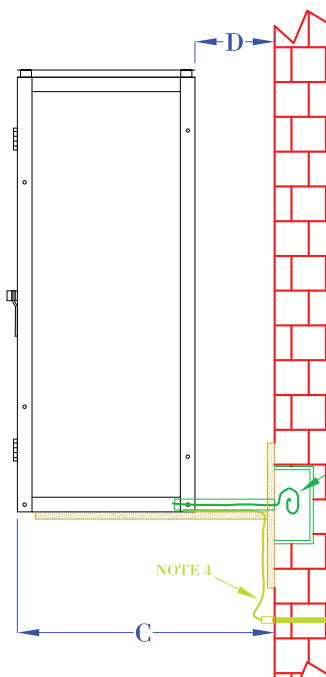
AUSTERLITZ STREET SIDE ELEVATION



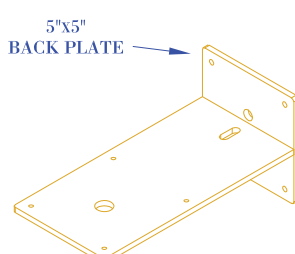
TYPE	STYLE	MANUFACTURER	FINISH	HEIGHT
F1	ELECTRIC LANTERN	BEVOLO	COPPER	4'-9"
F2	RECESSED CAN (EXTERIOR)	LITHONIA	OIL RUBBED BRONZE	ROOF OVERHANG




FRONT VIEW
(NTS)



SIDE VIEW
(NTS)



5"x5"
BACK PLATE



ISOMETRIC VIEW
(NTS- BRACKET ONLY)

NOTES:

1. MOUNTING HARDWARE SUPPLIED BY OTHERS
2. FIXTURES ARE HANDCRAFTED. DIMENSIONS MAY VARY PLUS OR MINUS 1/4"
3. ELECTRIC LIGHTS SUPPLIED WITH 18/2 WIRE WITH GROUND
4. GAS LIGHTS SUPPLIED WITH 3/16" COPPER GAS LINE AND 3/16" x 1/4" GAS LINE ADAPTOR

SIZE:	15"	19"	23"	27"
A:	15 1/4"	19"	22 3/4"	27"
B:	6"	7 1/2"	9"	10 7/8"
C:	8 3/4"	10 1/4"	11 3/4"	13 5/8"
D:	2 3/4"	2 3/4"	2 3/4"	2 3/4"

BEVOLO GAS & ELECTRIC LIGHTS		DRW BY:	JJG	COPYRIGHT 2018, BEVOLO GAS & ELECTRIC LIGHTS. THIS DRAWING AND ANY DESIGN OR DATA CONTAINED THEREIN ARE CONSIDERED PROPERTY OF BEVOLO GAS AND ELECTRIC LIGHTS. NEITHER THE DRAWING NOR ITS CONTENT MAY BE COPIED, REPRODUCED, OR EDITED TO A LIKENESS WITHOUT THE WRITTEN CONSENT OF BEVOLO GAS AND ELECTRIC LIGHTS.
LIGHT:	MODERNIST	DATE:	JJG	
BRACKET:	SHELF BRACKET	4-23-18	REVISION: 2	



Catalog Number
Notes
Type

FEATURES & SPECIFICATIONS

INTENDED USE — The OneUp™ recessed direct-wire LED downlight includes integrated junction box, trim, pre-installed non-metallic push-in connectors, and wago connectors in one package. The OneUp is the most economical means to create a well lit environment with exceptional energy efficiency and near zero maintenance.

CONSTRUCTION — Spun steel, round baffle trim. Integrated galvanized steel junction box with captive door for easy access. Suitable for daisy chaining (pulling wires). Available in 3000K color temperature LEDs.

OPTICS — Round adjustable gimbal w/180 degrees of rotation and 35 degrees of adjustable tilt in both directions. Diffused lens provides even light distribution for general illumination, equivalent to 65W incandescent flood lamp. Wide flood beam angle at >90°. CRI >90. Maintains at least 70% light output for 50,000 hours.

INSTALLATION — Tool-less installation. Secure trim retention with two side-mounted spring clips for easy installation in plaster, sheet rock, or plywood ceilings. Two non-metallic push-in connectors and three wago connectors pre-installed. Rated for Type IC installations. Maximum of 4 No. 12AWG through branch circuit conductor suitable for 90°C permitted in box. Ground wire provided.

ELECTRICAL SYSTEM — LED module with high-efficiency on board driver. Dimming down to 10%. For compatible dimmers, refer to: Compatible dimmers Chart. Actual wattage may differ by +/-5% when operating at 120V +/-10%.

LISTINGS — ETL certified to US and Canadian safety standards. Can be used to comply with California Title 24 Part 6 High Efficacy LED Light Source Requirements. WSEC ASTM E283 for Air-Tight rated with gasket or caulking between fixture trim and ceiling. ENERGY STAR™ certified. Damp location listed.

WARRANTY — 5-year limited warranty. Complete warranty terms located at: www.acuitybrands.com/CustomerResources/Terms_and_conditions.aspx

Note: Actual performance may differ as a result of end-user environment and application. All values are design or typical values, measured under laboratory conditions at 25 °C. Specifications subject to change without notice.

Direct-Wire LED Recessed Downlight

4JBK ADJ

IC Remodel













Brushed nickel Oil-rubbed bronze

Specifications	
Aperture:	2-1/2" (62.0)
Overlap Trim:	4-7/8" (124.0)
Height:	4-5/8" (117.2)
Ceiling Opening:	4-5/8" (117)
Min Ceiling Thickness:	1/2" (12.7)
Max Ceiling Thickness:	1-1/2" (38.1)

All dimensions are inches (millimeters).



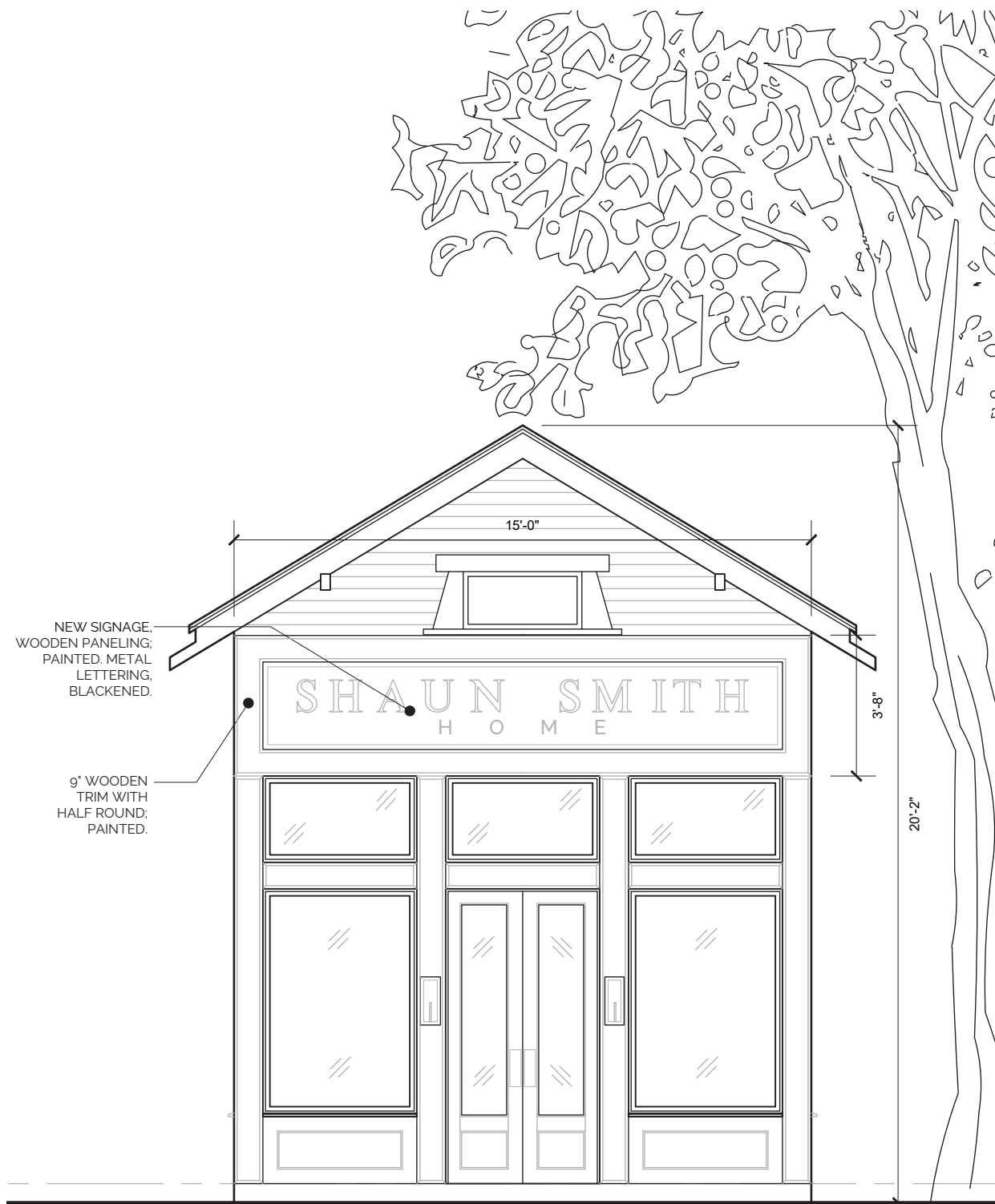
ORDERING INFORMATION For shortest lead times, configure product using **standard options (shown in bold)**. **Example:** 4JBK ADJ 30K 90CRI MW

Series	Shape	CCT/Watts/Lumens ¹	CRI	Finish
4JBK	ADJ Round Adjustable	30K 3000K/8.2W/620L	90CRI 90 CRI	MW Matte White BN Brushed Nickel ORB Oil Rubbed Bronze

Notes

1 Total System Delivered Lumens.

DOWNLIGHTING
4JBK ADJ



BUILDING ELEVATION



SIGNAGE DETAIL



VIEW FROM MAGAZINE STREET



VIEW FROM AUSTERLITZ STREET SIDE



VIEW FROM CONSTANTINOPLE STREET SIDE



VIEW FROM MAGAZINE STREET



VIEW FROM AUSTERLITZ STREET SIDE



VIEW OF ROOF OVERHANG FROM MAGAZINE STREET

HU B1:
COMPREHENSIVE ZONING ORDINANCE REQUIREMENTS AND DESIGN GOALS

The Project is a facade renovation of the existing store located at 3947 Magazine. In accordance with HU B1 zoning, the Project is a commercial space that predominantly serves the needs of the nearby residential neighborhoods and is sensitive and compatible with the residential surroundings. Per the CZO, the project will provide a clearly identifiable entry from the public sidewalk. It will not utilize any of the prohibited materials, such as stuccato board or vinyl, and will primarily be comprised of painted wood paneling and new direct set windows with metal casing. The windows and doors will have raised elements to create shadow and articulation. The facade will be designed to be viewed from multiple directions with consistent materials and treatments that wrap around all facades.