



# CLAIBORNE CULTURAL INNOVATION DISTRICT

## Marketplace, Culture and Green Infrastructure Overlay Project

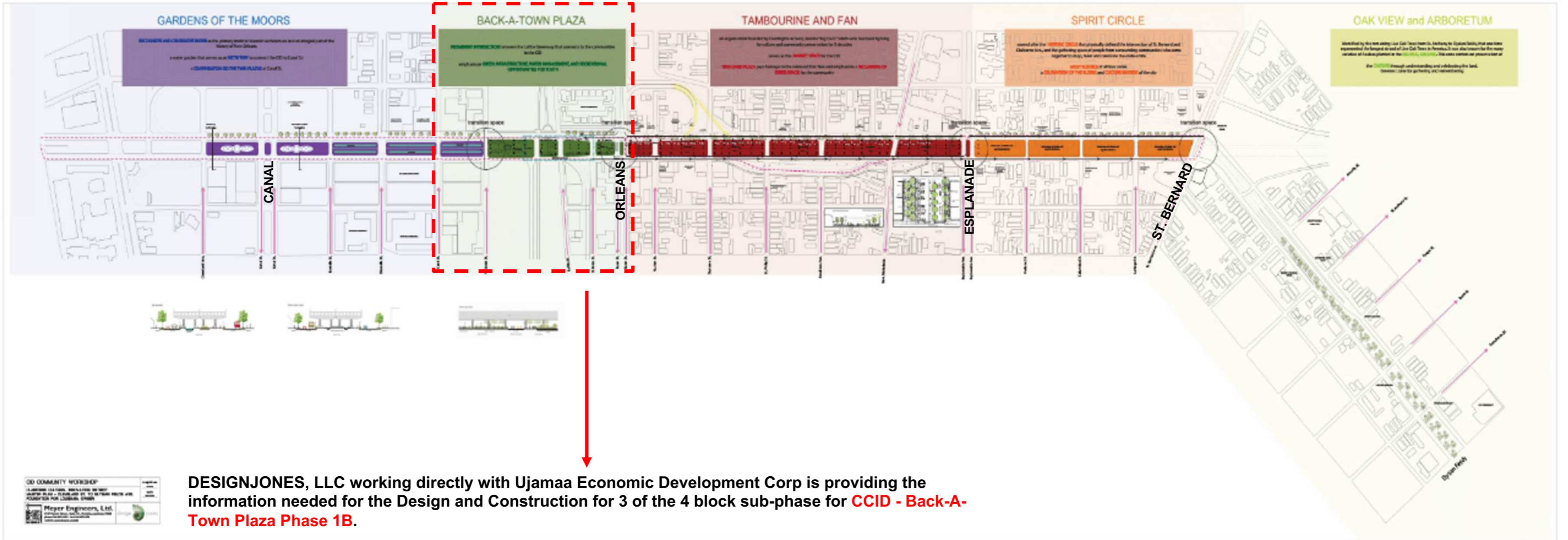
DESIGN ADVISORY COMMISSION PRESENTATION - 15 DECEMBER 21



# THE CCID 19 to 25 BLOCK CONTEXT

The CLAIBORNE CULTURAL INNOVATION DISTRICT (CCID) is a **public marketplace, culture, green infrastructure and resource center** that showcases a sampling of the cultural treasures and character of its historic neighborhood.





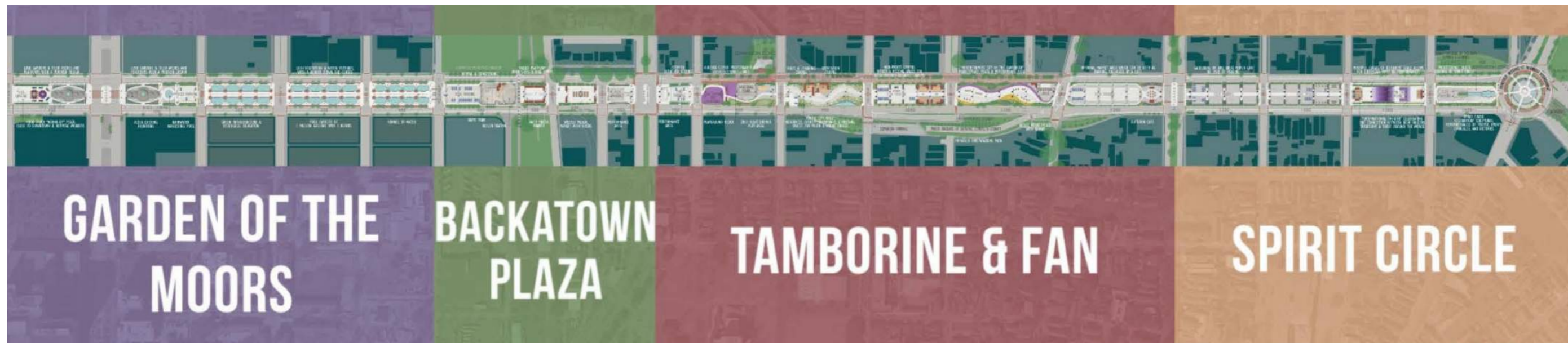
The palette of systems overlaid reveals the conceptual design sensitivity to system support layers that must be enhanced to maximize the functionality of planned improvements in the study area.

**Figure 6. Palette of Systems Overlaid in Design**



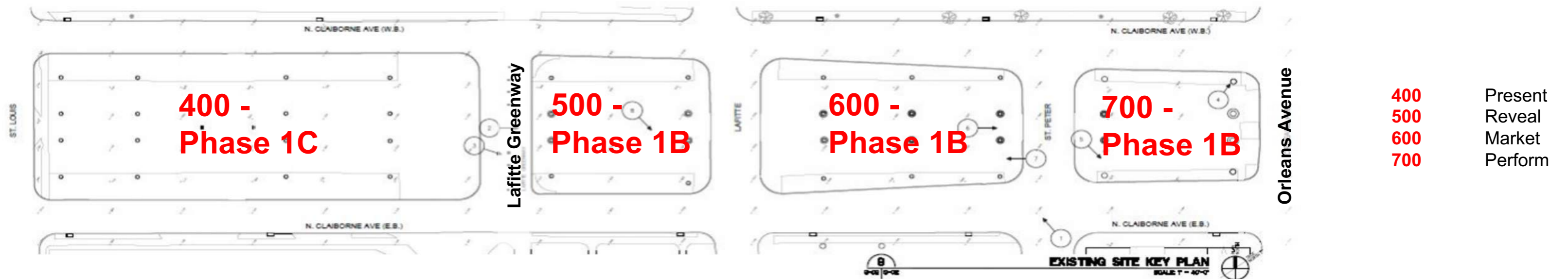
The Claiborne CID is divided into four distinct conceptual design zones, beginning on the left at Cleveland Avenue and ending on the right at St. Bernard Avenue as shown in the figure below.

**Figure 7. Conceptual Design Zones in the Study Area**



# 4 BLOCK BACK-A-TOWN DEMONSTRATION PROJECT

## EXISTING CONDITIONS



The Plants are installed in **Phase 1A**



### **Inventory + Analysis:**

- On-site participation
- Existing Conditions

### **Conceptual Design:**

- Stormwater
- Green Infrastructure
- Green Space
- Bike + Walking Paths
- Automobile Parking
- Connections to Surrounding Neighborhoods
- Road access

400 block of N. Claiborne Ave.	500 block of N. Claiborne Ave.	600 & 700 blocks of N. Claiborne Ave.	Claiborne Ave. (north side - Lake)	Claiborne Ave. (south side - River)
HUMU	MU-2 (on the river side)	MU-2 (on the river side)	HU-B1	HMC-2
GC Overlay	OS-G (on the lake side)	HURM1 (on the lake side)		
EC Overlay	GC Overlay	GC Overlay		
	EC Overlay	EC Overlay		
<b>KEY:</b>	<b>DEFINITION:</b>	<b>LIST OF APPROVAL STANDARDS &amp; PERMITTED USES:</b>		
<b>GC Overlay (GREEN CORRIDOR)</b>	Intended as an overlay district to promote an active public edge by ensuring pedestrian and bicycle-oriented design in new development and redevelopment on lots fronting officially designated greenways.	<a href="https://czo.nola.gov/article-18#18-17">https://czo.nola.gov/article-18#18-17</a>		
<b>EC Overlay (ENHANCEMENT CORRIDOR)</b>	Development plan and design review is required for any new structure, addition, or enlargement.	<a href="https://czo.nola.gov/article-18#18-15">https://czo.nola.gov/article-18#18-15</a>		
<b>HUMU (Historic Urban Mixed Use)</b>	Designed to encourage mixed-use areas that are compatible with adjacent or nearby land uses and pedestrian-oriented in character, active retail and personal service uses along the ground floor.	<a href="https://czo.nola.gov/article-12/">https://czo.nola.gov/article-12/</a>		
<b>MU-2 (High Intensity Mixed Use)</b>	Intended to encourage walkable neighborhood centers and corridors conducive to transit, with a mix of residential and supportive commercial and office uses. Buildings may contain vertical mixed-use as well as single purpose uses designed to be located both at neighborhood centers and along major arterial corridors.	<a href="https://czo.nola.gov/article-15/">https://czo.nola.gov/article-15/</a>		
<b>OS-G (Greenway Open Space)</b>	Provide residents with access to active and passive recreation areas, protect the City's cemeteries, and preserve natural resources within the wetlands and coastal areas. In some districts, only limited development is appropriate such as cultural facilities while in other areas the predominant character should emphasize the natural environment.	<a href="https://czo.nola.gov/article-7/">https://czo.nola.gov/article-7/</a>		
<b>HU-RM1 (HISTORIC URBAN MULTI-FAMILY RESIDENTIAL NEIGHBORHOOD DISTRICT)</b>	Limited non-residential uses such as places of worship, historic neighborhood commercial establishments, and recreational facilities that are compatible with surrounding residential neighborhoods may be allowed.	<a href="https://czo.nola.gov/article-11/">https://czo.nola.gov/article-11/</a>		
<b>HU-B1 (NEIGHBORHOOD BUSINESS DISTRICT)</b>	Intended for commercial areas that predominantly serve the needs of the nearby residential neighborhoods. The general character of this type of development should be sensitive to and compatible with its residential surroundings.	<a href="http://czo.nola.gov/Article-12#12-1-B">http://czo.nola.gov/Article-12#12-1-B</a>		
<b>HMC-2 (HISTORIC MARIGNY/TREMÉ/BYWATER COMMERCIAL DISTRICT)</b>	The HMC-2 Historic Marigny/Tremé/Bywater Commercial District is intended to permit more intensive commercial uses than the HMC-1 District, yet protect the historic character of the Marigny/Tremé/Bywater area. The district includes the peripheral properties in Marigny/Tremé/Bywater that front on major traffic arteries and can provide access for more intense commercial uses. In the HMC-2 District, a live performance venue and/or live entertainment – secondary use is limited to one (1) per blockface.	<a href="http://czo.nola.gov/Article-10#10-2-B-7">http://czo.nola.gov/Article-10#10-2-B-7</a>		
<b>On-Site Development Standards</b>	The purpose of this Article is to address the site improvements on a lot other than the principal building. This includes adequate public facility requirements, environmental performance standards, exterior lighting regulations, accessory structures and uses, permitted encroachments into required yards, and temporary uses.	<a href="http://czo.nola.gov/Article-21#21-8">http://czo.nola.gov/Article-21#21-8</a>		

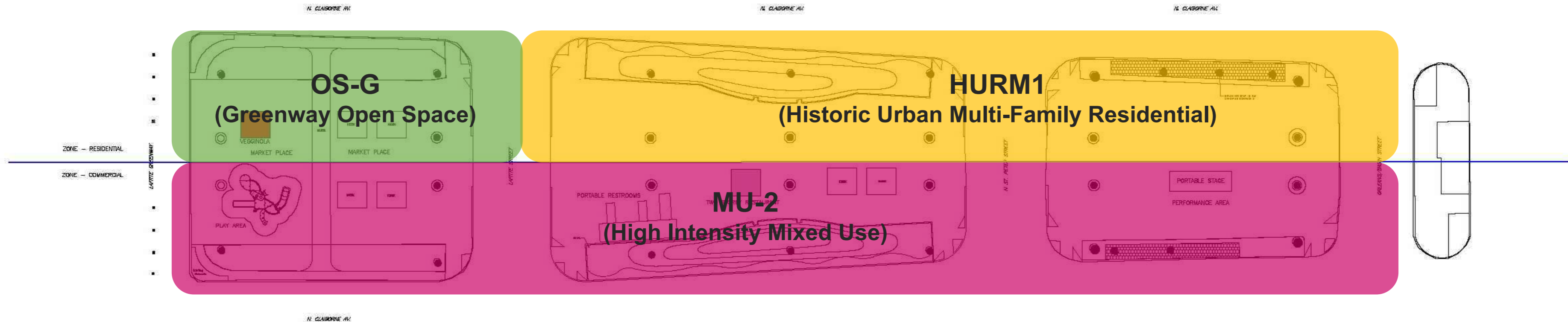
\*A storm water management plan is not required for these improvements. (02/07/2018 - Travis Martin, Senior Planner, City Planning Commission)

# 4 BLOCK BACK-A-TOWN DEMONSTRATION PROJECT

## EXISTING CONDITIONS - ZONING



Informal Market



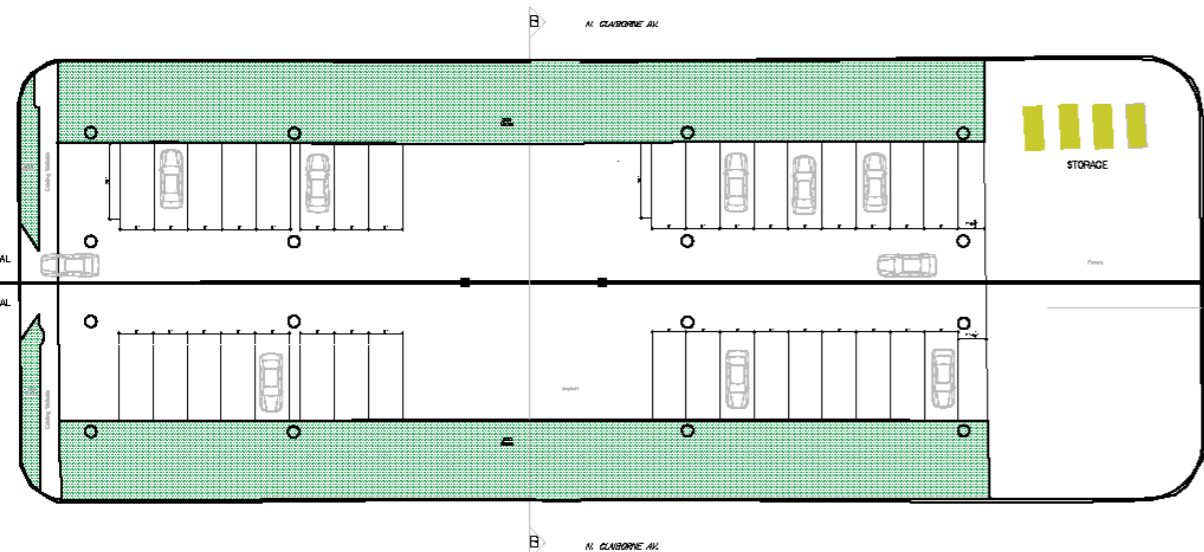
**CITY PLANNING COMMISSION  
DESIGN ADVISORY COMMITTEE  
MINUTES – March 7, 2018**

**9. Consideration: DR025-18 – Claiborne Cultural Innovation District**

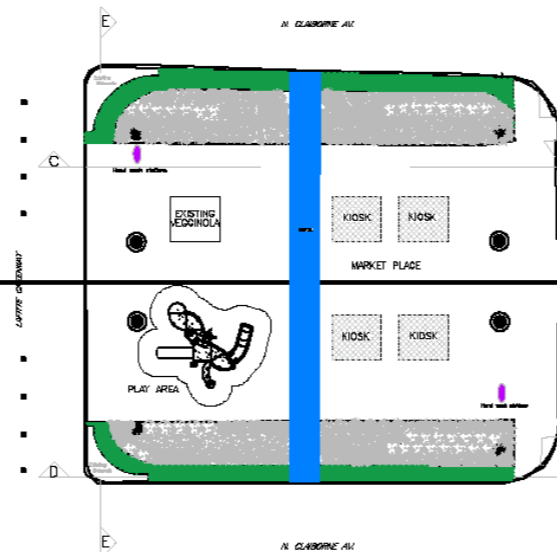
1. Reclaim the neighborhood community that was displaced by the Interstate and this initial phase would continue afterword every weekend.
2. The location of this part of the project is from 400 through 700 blocks of North Claiborne under the Interstate.
3. **Motion: A motion for Approval of the proposed improvements for the canopy, string lighting, and landscaping to facilitate the...event was made by PPW subject all of the comments regarding landscaping, zoning, and mural approvals. The motion was seconded by HDLC and adopted unanimously.**



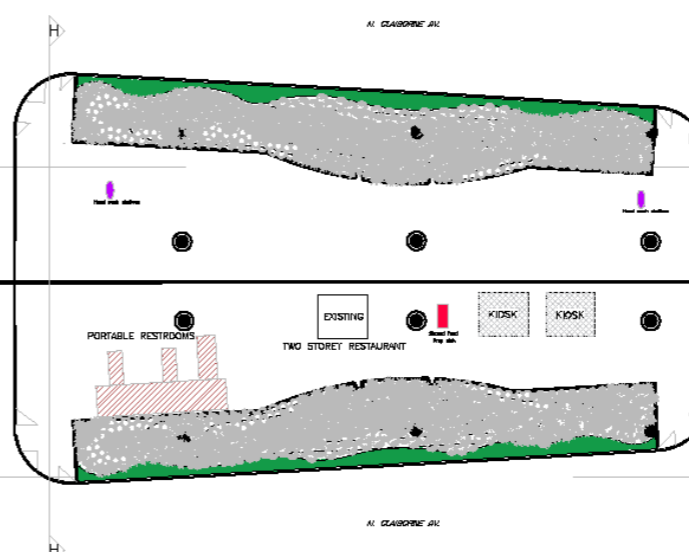
## 400 - Phase 1C



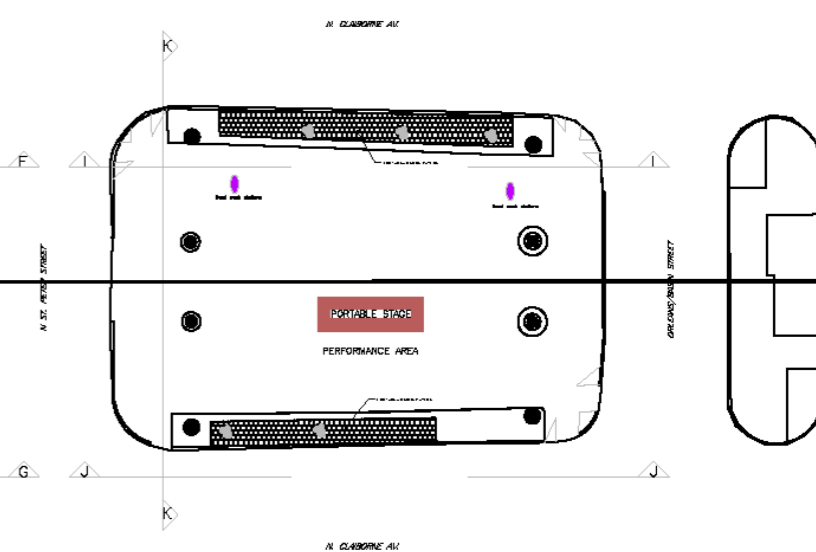
## 500 - Phase 1B

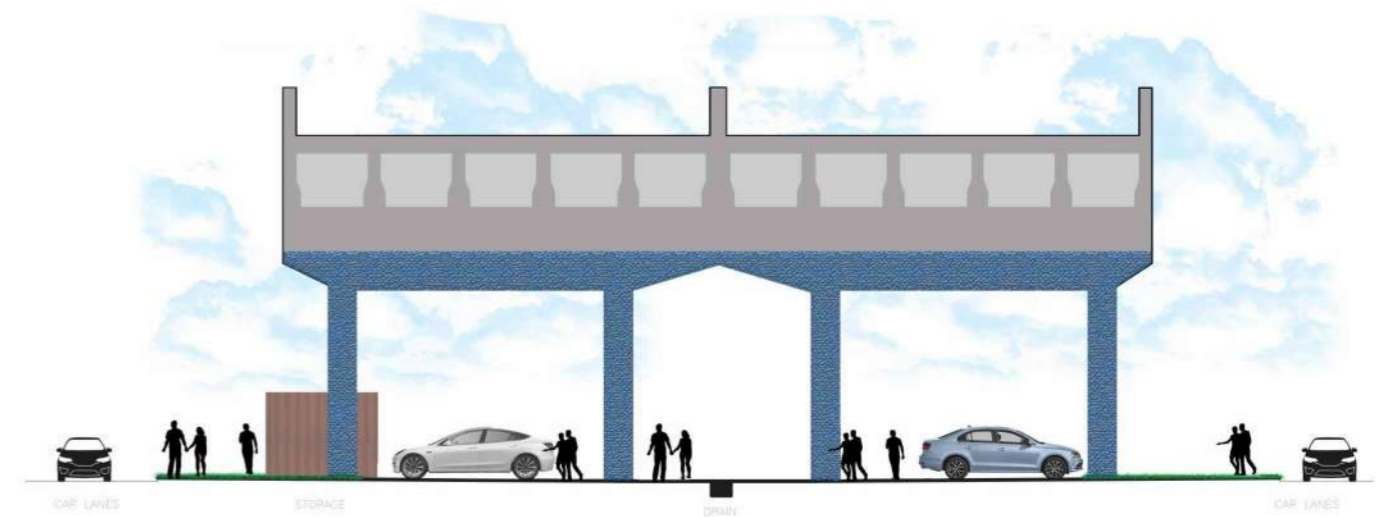
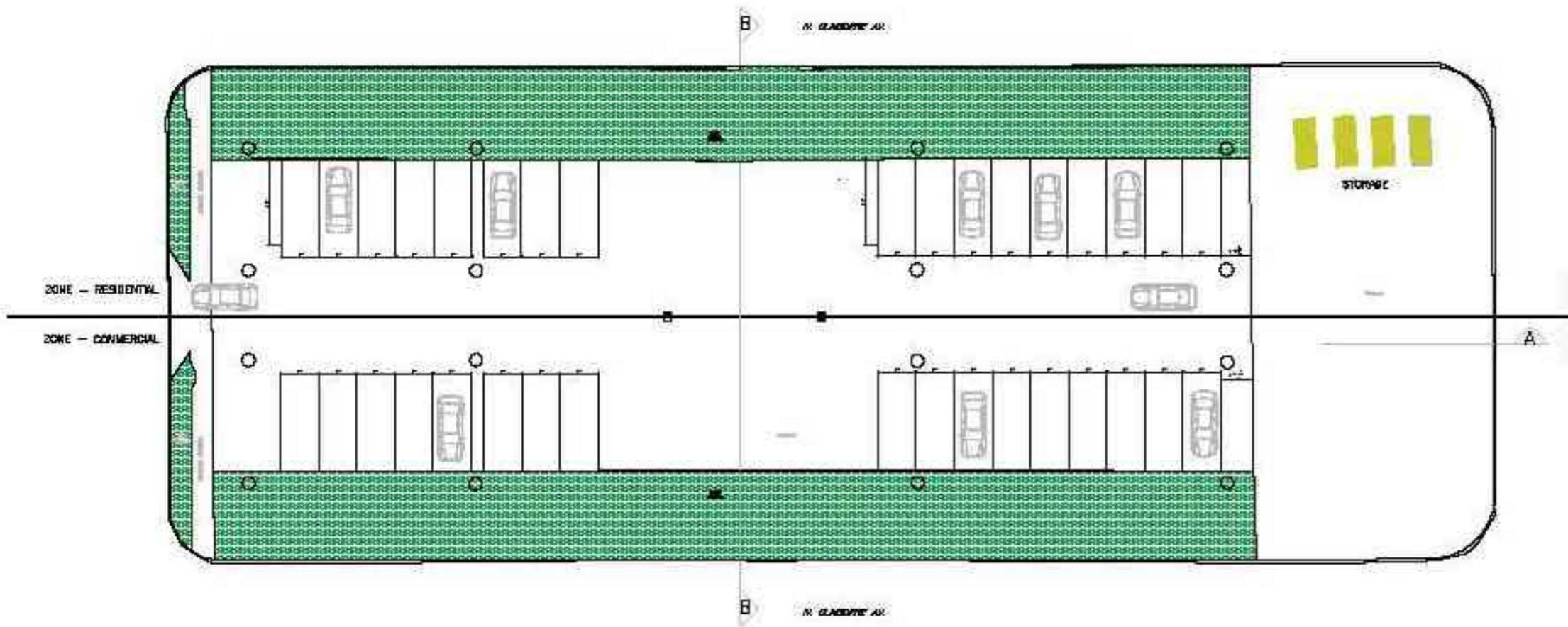
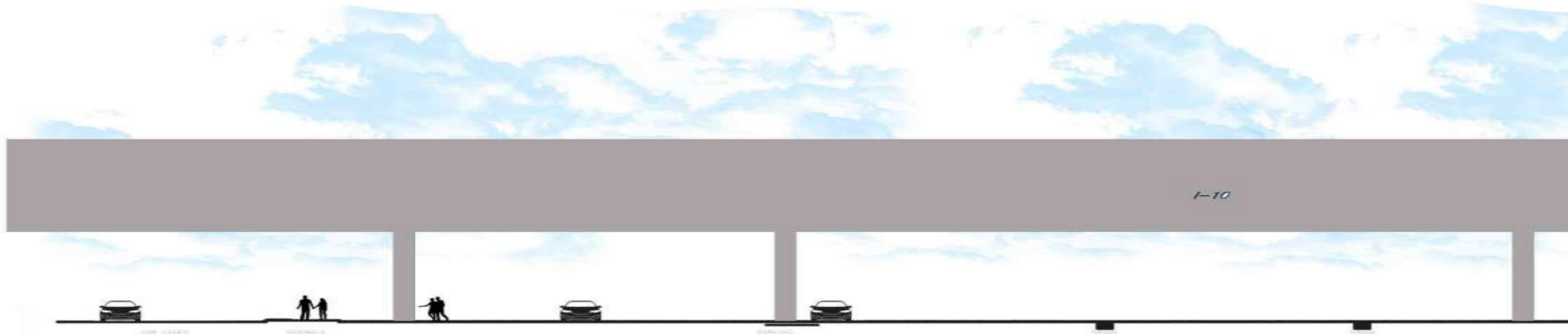


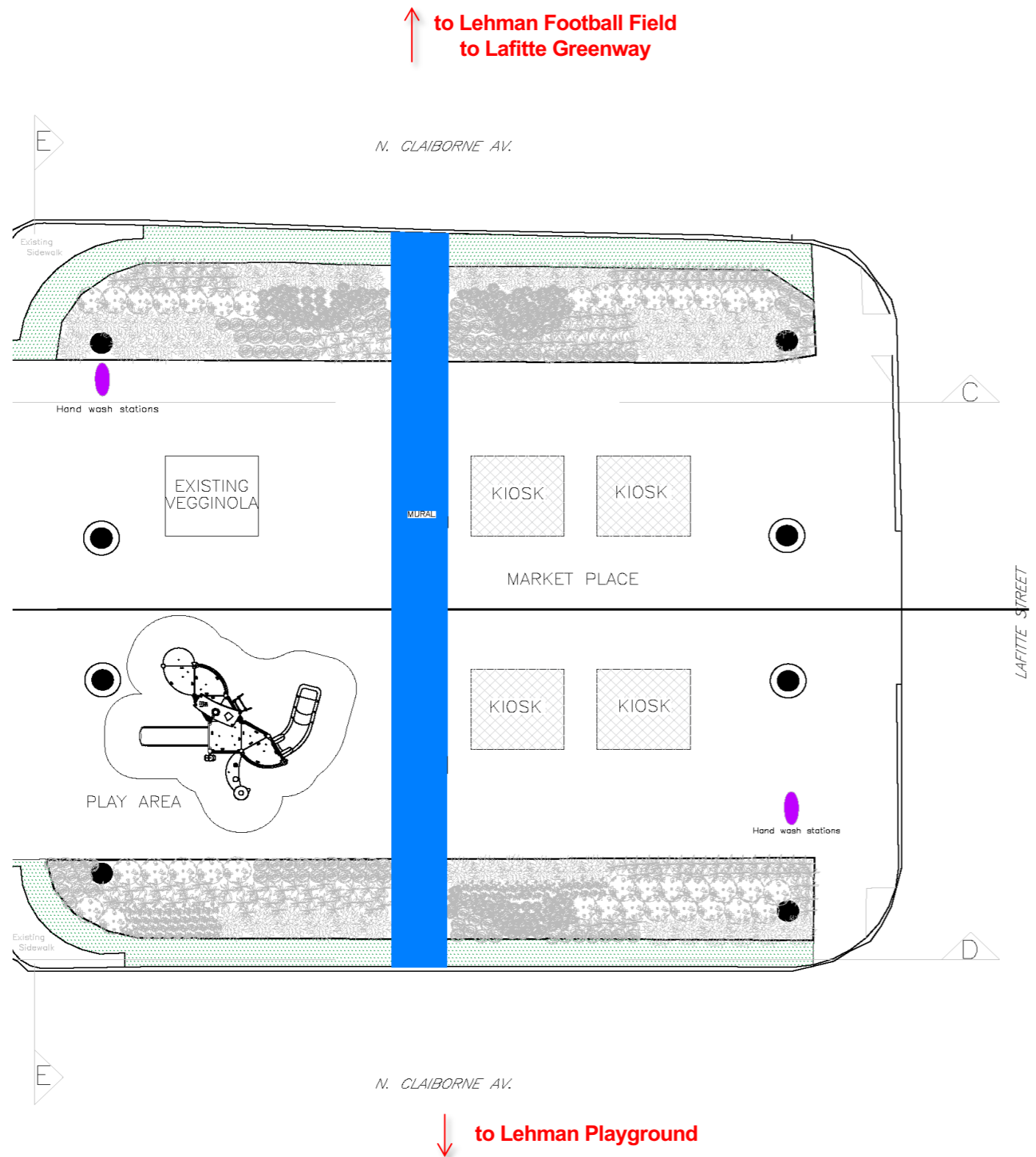
## 600 - Phase 1B



## 700 - Phase 1B







## Major Design Components:

- Canopy
- Murals Project
- Kiosks & Containers
- Market Place
- Playground

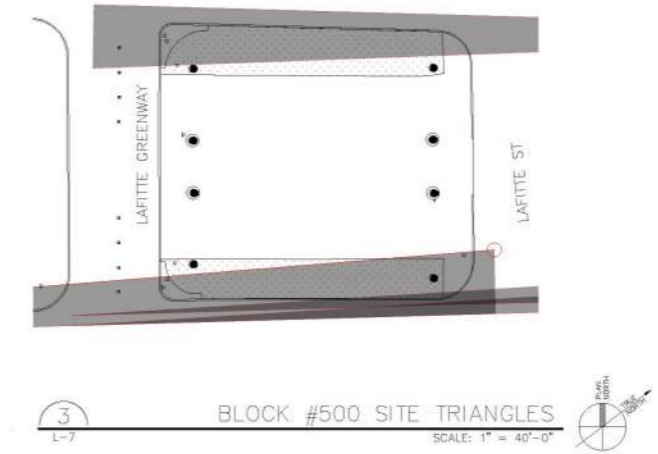
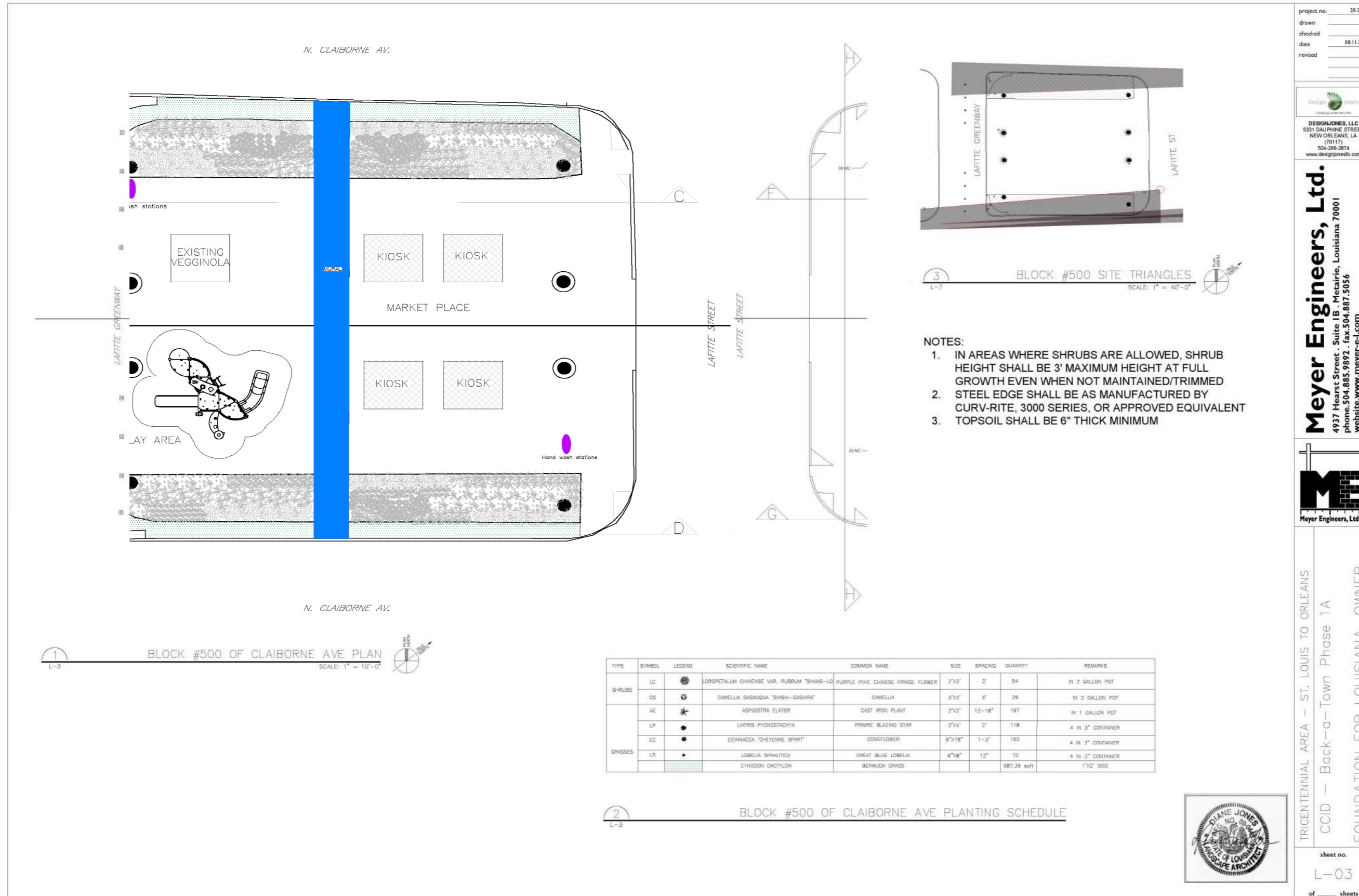
### \* CID Protocol

- Staffing
- Maintenance
- Security
- Special Events

### The Market Place

- ★ Weekend Market will include trash pick-up and portable restrooms
- ★ Vendor Retail Operations: Friday through Sunday, 7am - 7pm
- ★ Vendor Load-in: 3pm - 8pm on Thursdays
- ★ Vendor Load-out: 7pm - 11pm on Sunday
- ★ One storage unit will house vendor kiosks Monday thru Wednesday
- ★ All informal seating and art displays will be accessible during the week

# LANDSCAPE PLAN 500 BLOCK



- NOTES:
1. IN AREAS WHERE SHRUBS ARE ALLOWED, SHRUB HEIGHT SHALL BE 3' MAXIMUM HEIGHT AT FULL GROWTH EVEN WHEN NOT MAINTAINED/TRIMMED
  2. STEEL EDGE SHALL BE AS MANUFACTURED BY CURV-RITE, 3000 SERIES, OR APPROVED EQUIVALENT
  3. TOPSOIL SHALL BE 6" THICK MINIMUM

1  
L-3  
BLOCK #500 OF CLAIBORNE AVE PLAN  
SCALE: 1" = 10'-0"

TYPE	SYMBOL	LEGEND	SCIENTIFIC NAME	COMMON NAME	SIZE	SPACING	QUANTITY	REMARKS
SHRUBS	LC		LADOPETALUM CHINENSE VAR. PUBERUM "SHANG-LO"	PURPLE PIXIE CHINESE FRINGE FLOWER	2'x2'	3'	54	IN 2 GALLON POT
	CS		CAMELLIA SASANKUA "SHISHI-GASHIRA"	CAMELLIA	3'x2'	3'	29	IN 2 GALLON POT
GRASSES	AE		ASPIDISTRA ELATOR	CAST IRON PLANT	2'x2'	12-18"	197	IN 1 GALLON POT
	LP		LIATRIS Pycnostachya	PRAIRIE BLAZING STAR	2'x4'	2'	118	4 IN 3" CONTAINER
	EC		ECHINACEA "CHEYENNE SPIRIT"	CONEFLOWER	6'x18"	1-3'	162	4 IN 3" CONTAINER
	LS		LOBELIA SIPHILITICA	SIRAT BLUE LOBELIA	6'x6"	12"	72	4 IN 3" CONTAINER
			CYNODON DACTYLON	BERMUDA GRASS			987.36 sqft	1'x2' SOG

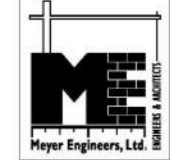
2  
L-3  
BLOCK #500 OF CLAIBORNE AVE PLANTING SCHEDULE



project no. 20-2019  
drawn AA  
checked AA  
date 08.11.2021  
revised

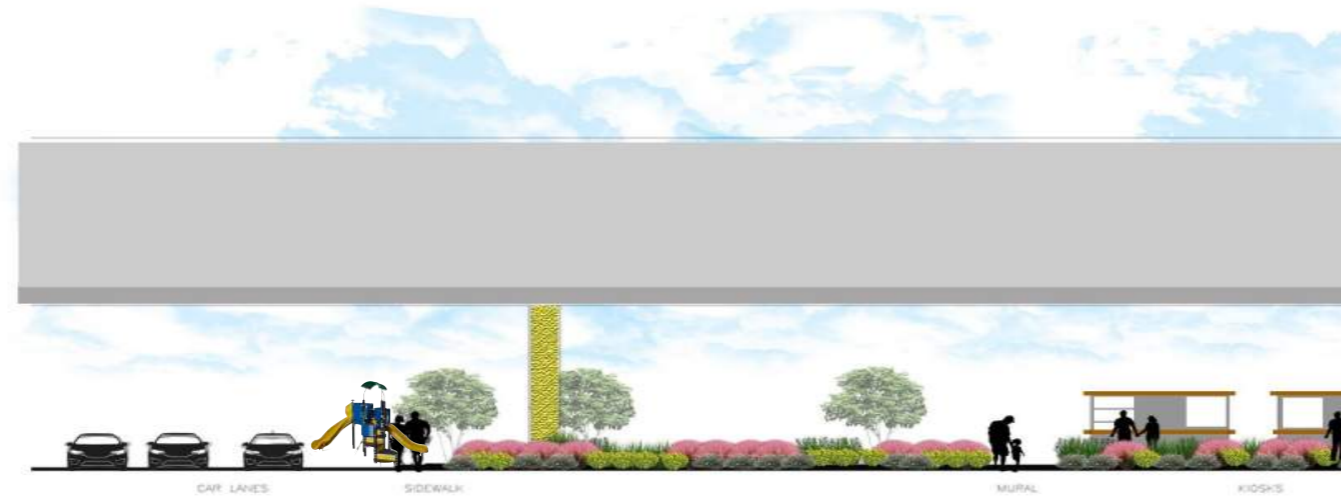
DESIGN JONES, LLC  
5331 DAUPHINE STREET  
NEW ORLEANS, LA 70117  
504-266-2874  
www.designjonesllc.com

**Meyer Engineers, Ltd.**  
4937 Hears Street, Suite 1B, Metairie, Louisiana 70001  
phone: 504.885.9892 • fax: 504.887.5036  
website: www.meyer-e-l.com

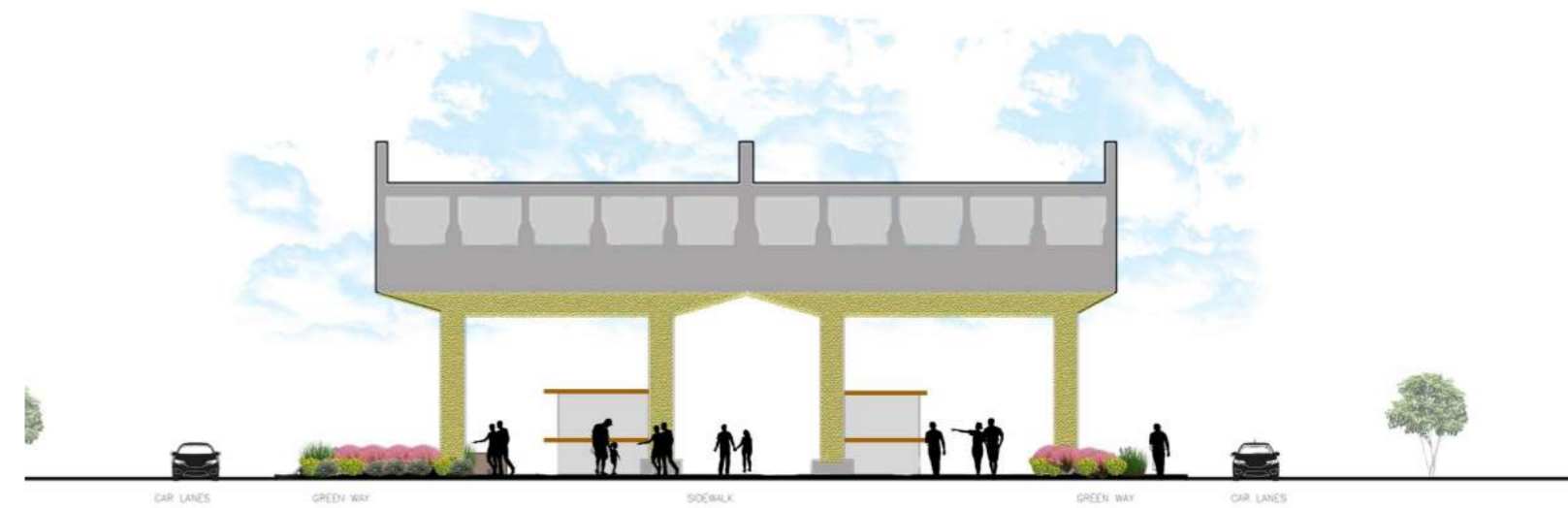
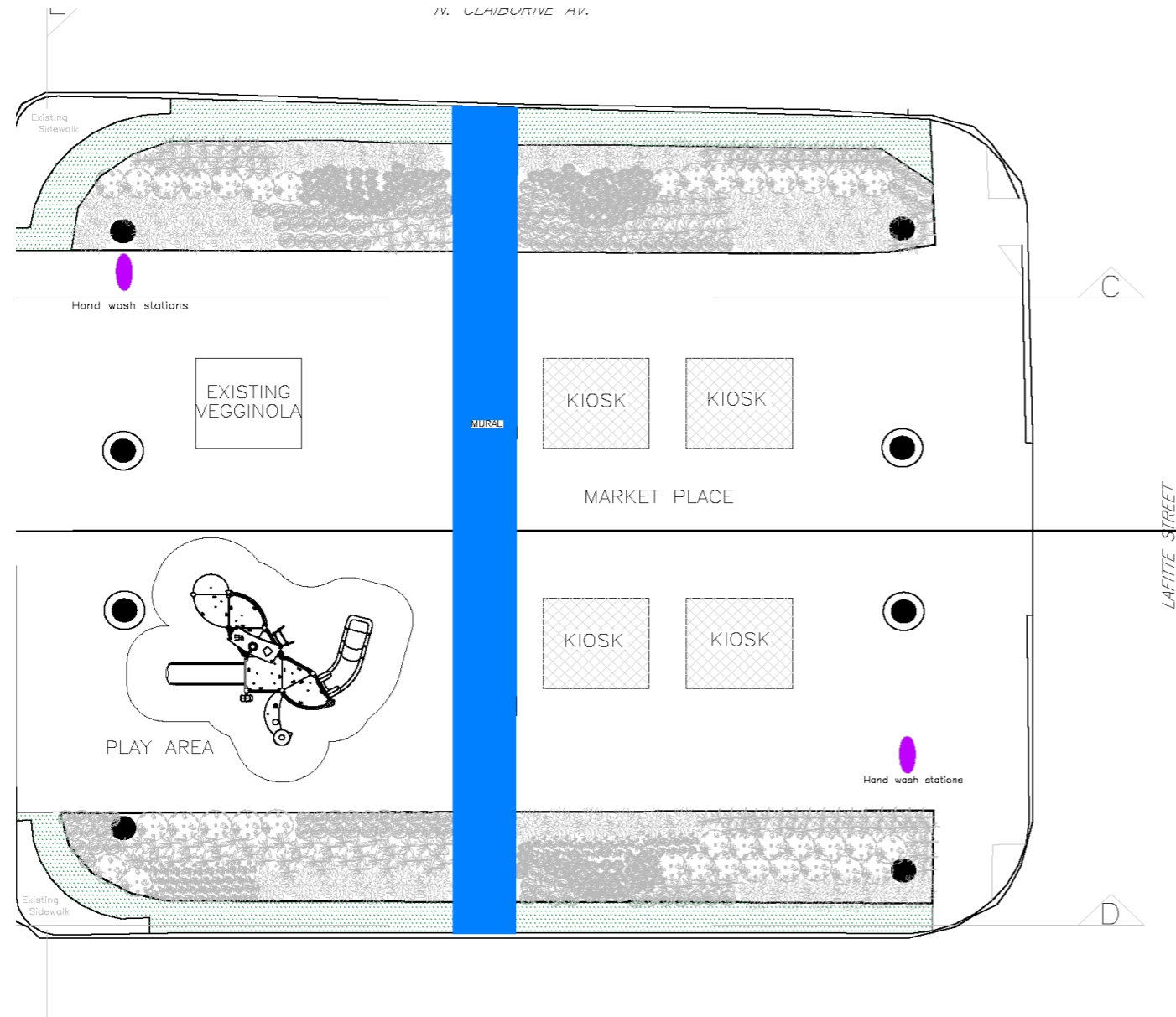


TRICENTENNIAL AREA - ST. LOUIS TO ORLEANS  
CCID - Back-a-Town Phase 1A  
FOUNDATION FOR LOUISIANA, OWNER

sheet no.  
L-03  
of sheets



IV. CLAUDURNE AV.





BEFORE



Tribute to Mr. Okra





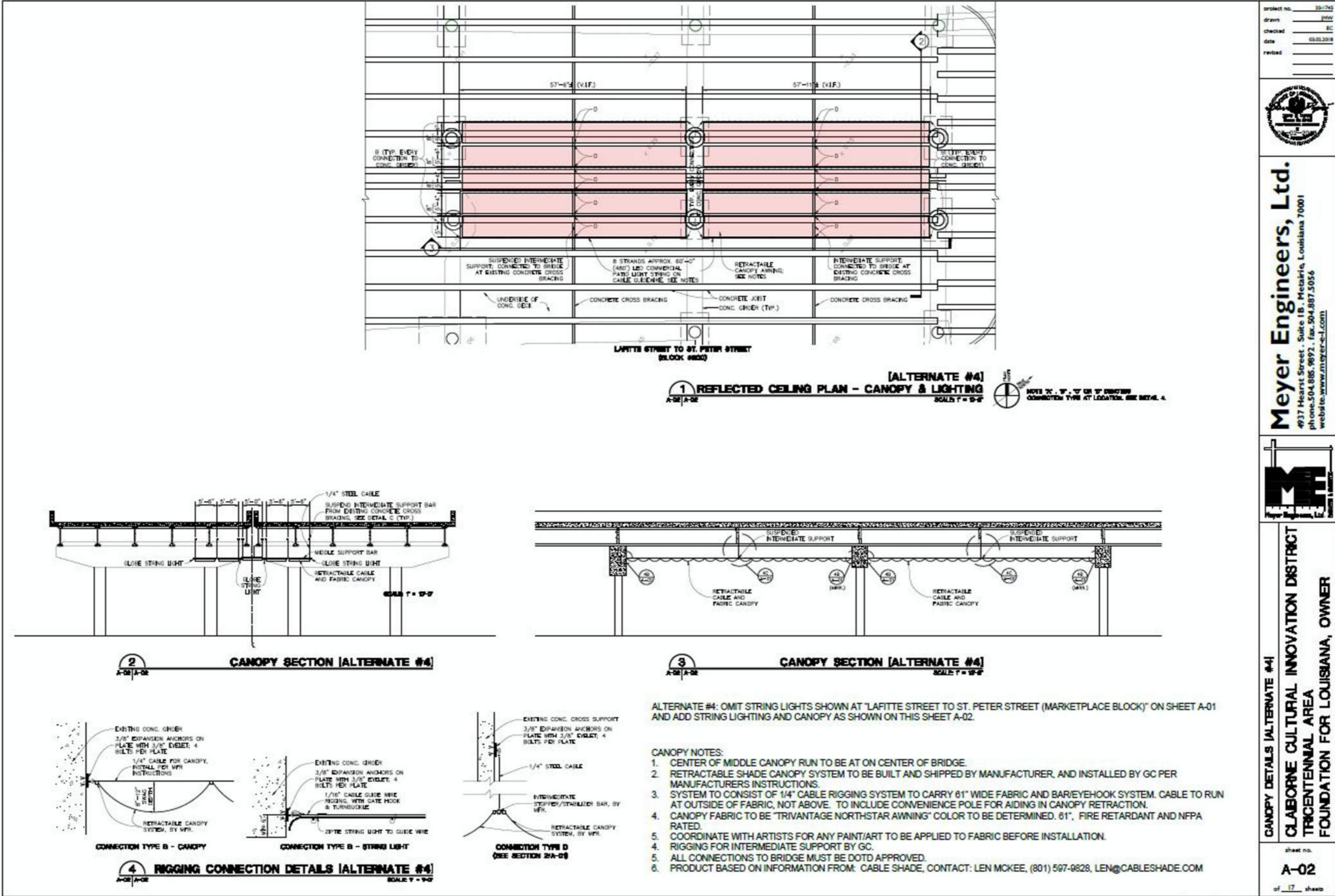
**BEFORE**

**RETRACTABLE SHADE  
MURALS PROJECT  
MARKET PLACE**



**AFTER**

# RETRACTABLE SHADE CANOPY



project no.	201745
drawn	PMW
checked	EC
date	03.01.2018
revised	



**Meyer Engineers, Ltd.**  
437 Hearst Street, Suite 18 - Metairie, Louisiana 70001  
phone: 504.885.9892, fax: 504.887.5056  
website: www.meyer-e.com



CANOPY DETAILS [ALTERNATE #4]  
CLAIBORNE CULTURAL INNOVATION DISTRICT  
TRICENTENNIAL AREA  
FOUNDATION FOR LOUISIANA, OWNER

sheet no.  
**A-02**  
of 17 sheets



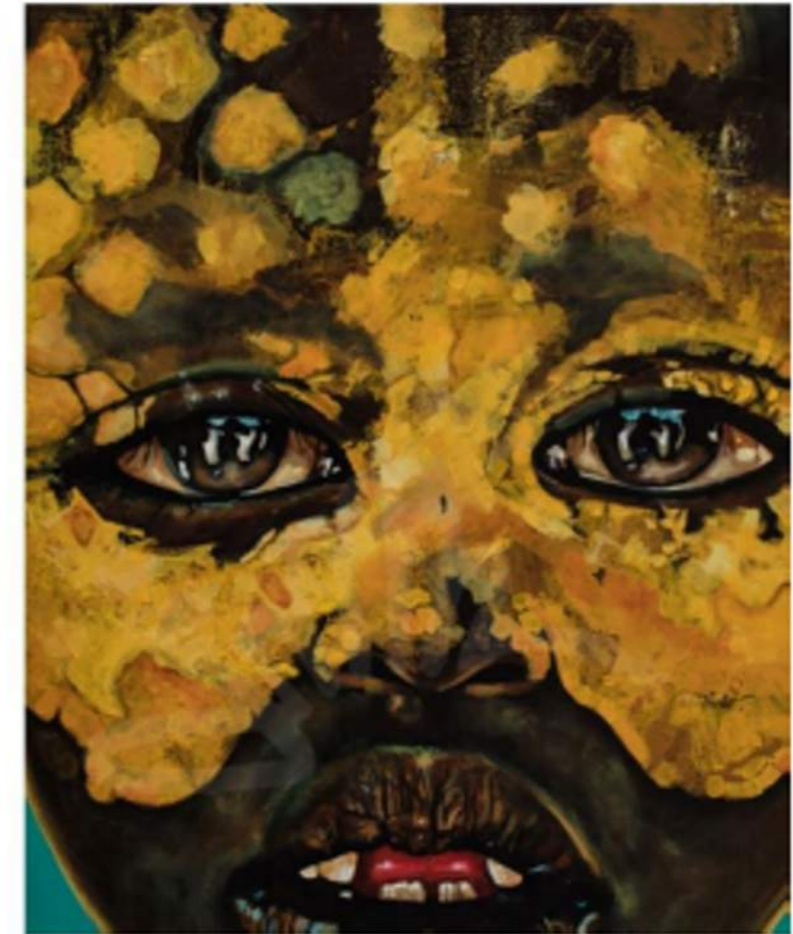
IN COLLABORATION W/ THE ARTS COUNCIL OF NEW ORLEANS



**AYO SCOTT**

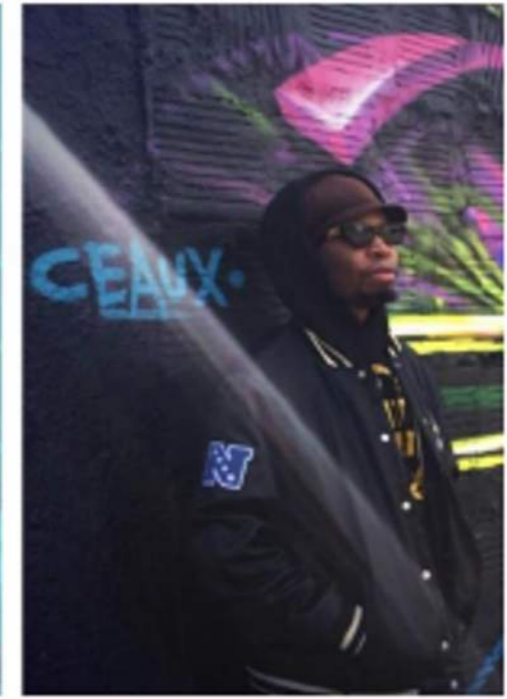


**JESSICA STRAHAN**



IN COLLABORATION W/ THE ARTS COUNCIL OF NEW ORLEANS

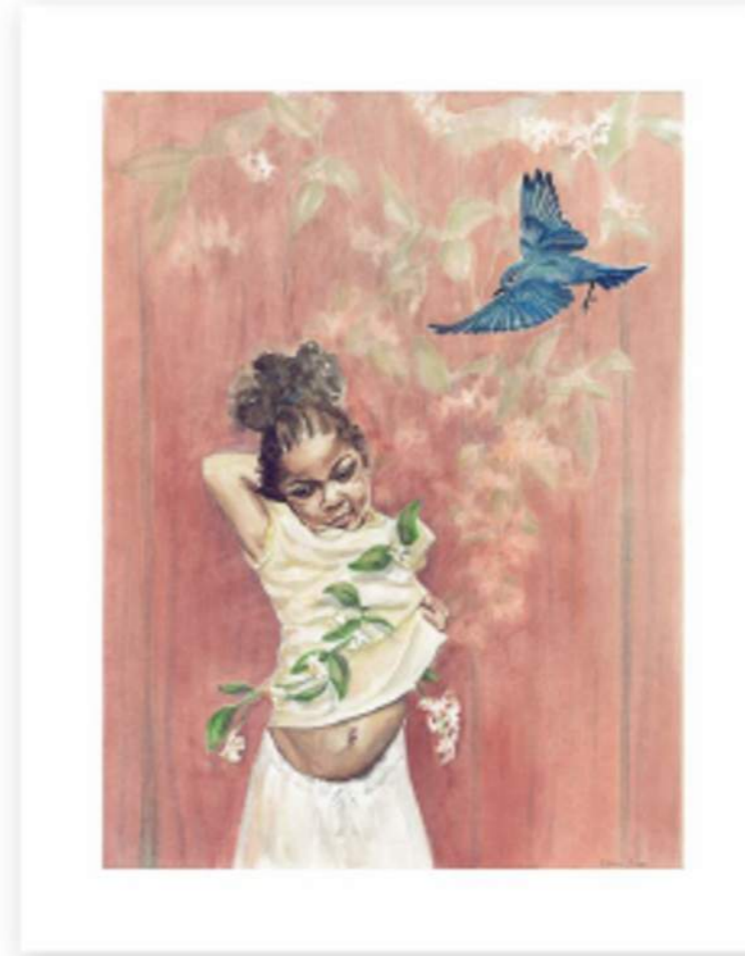
CARL JOE WILLIAMS



CEAUX  
YOUNG



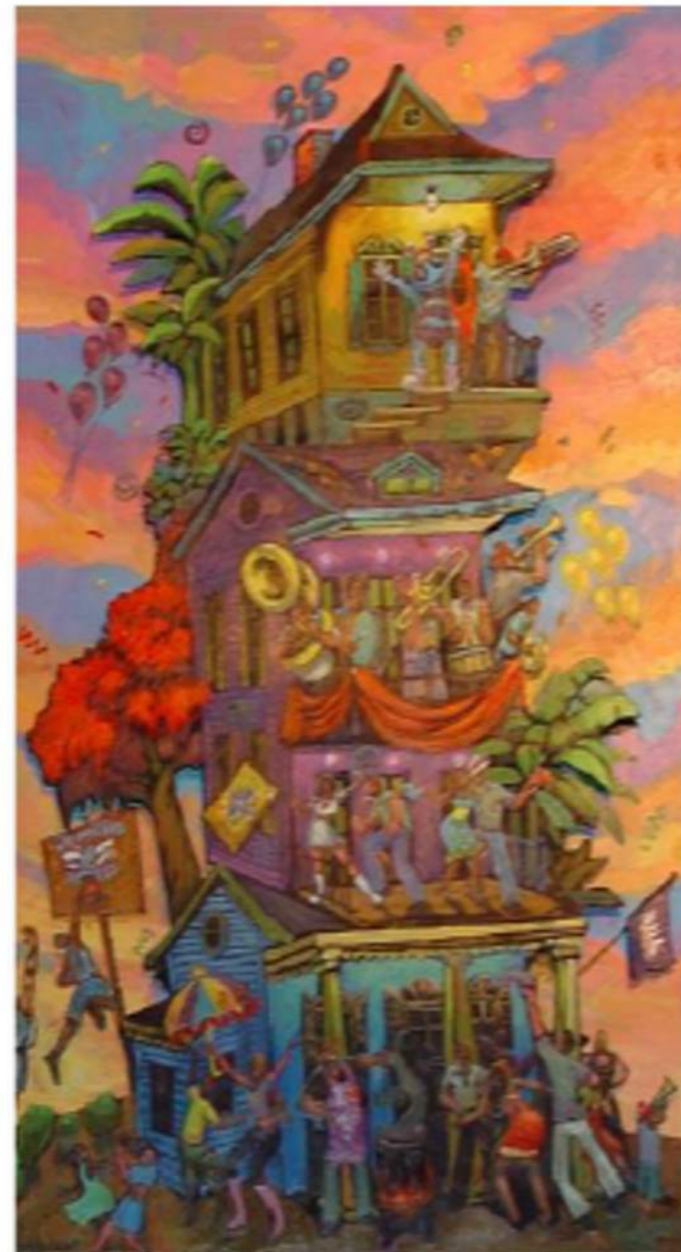
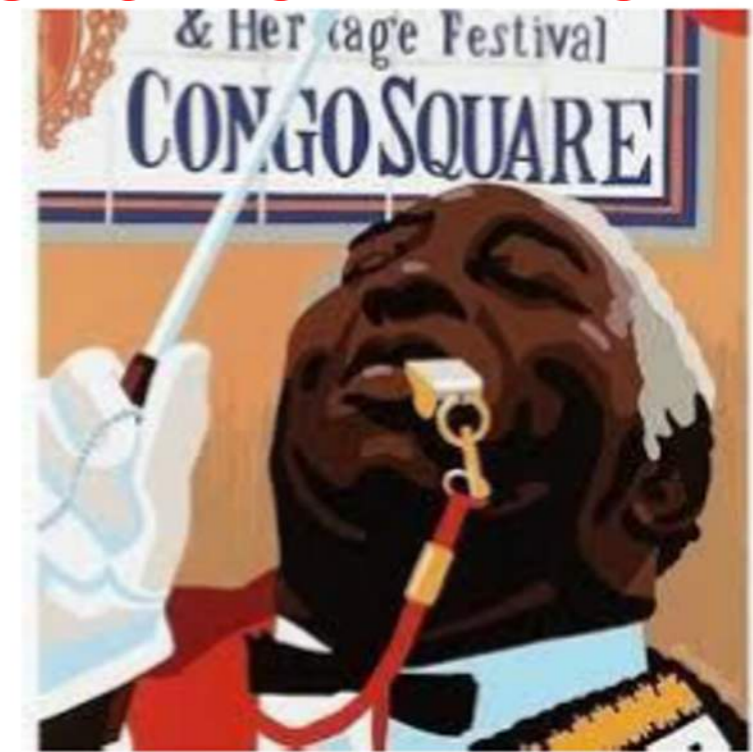
IN COLLABORATION W/ THE ARTS COUNCIL OF NEW ORLEANS



**BMIKE**

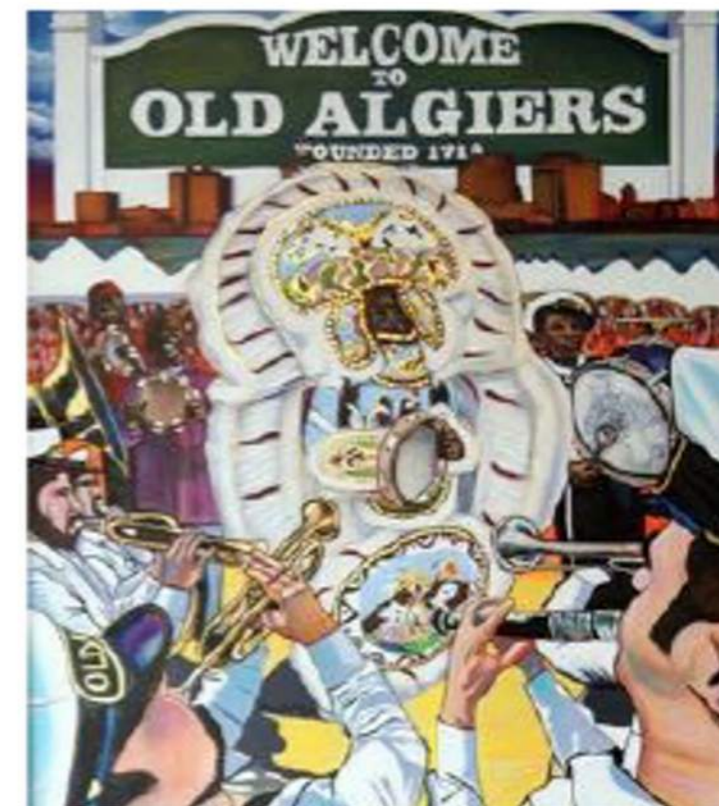


IN COLLABORATION W/ THE ARTS COUNCIL OF NEW ORLEANS



**KENNETH SCOTT**

**TERRENCE OSBORNE**



IN COLLABORATION W/ THE ARTS COUNCIL OF NEW ORLEANS



SHELEEN JONES



NAT WILLIAMS



**200M<sup>2</sup> OF:**

**SHARP CLOTHING  
SNEAKERS SELECTION  
HEALTHY FOOD  
FINEST COFFEES  
ALL KINDS OF TREATS  
SELECTED GOODIES  
ARTISTS & EXHIBITIONS  
NEIGHBOURHOOD  
CULTURE  
...**

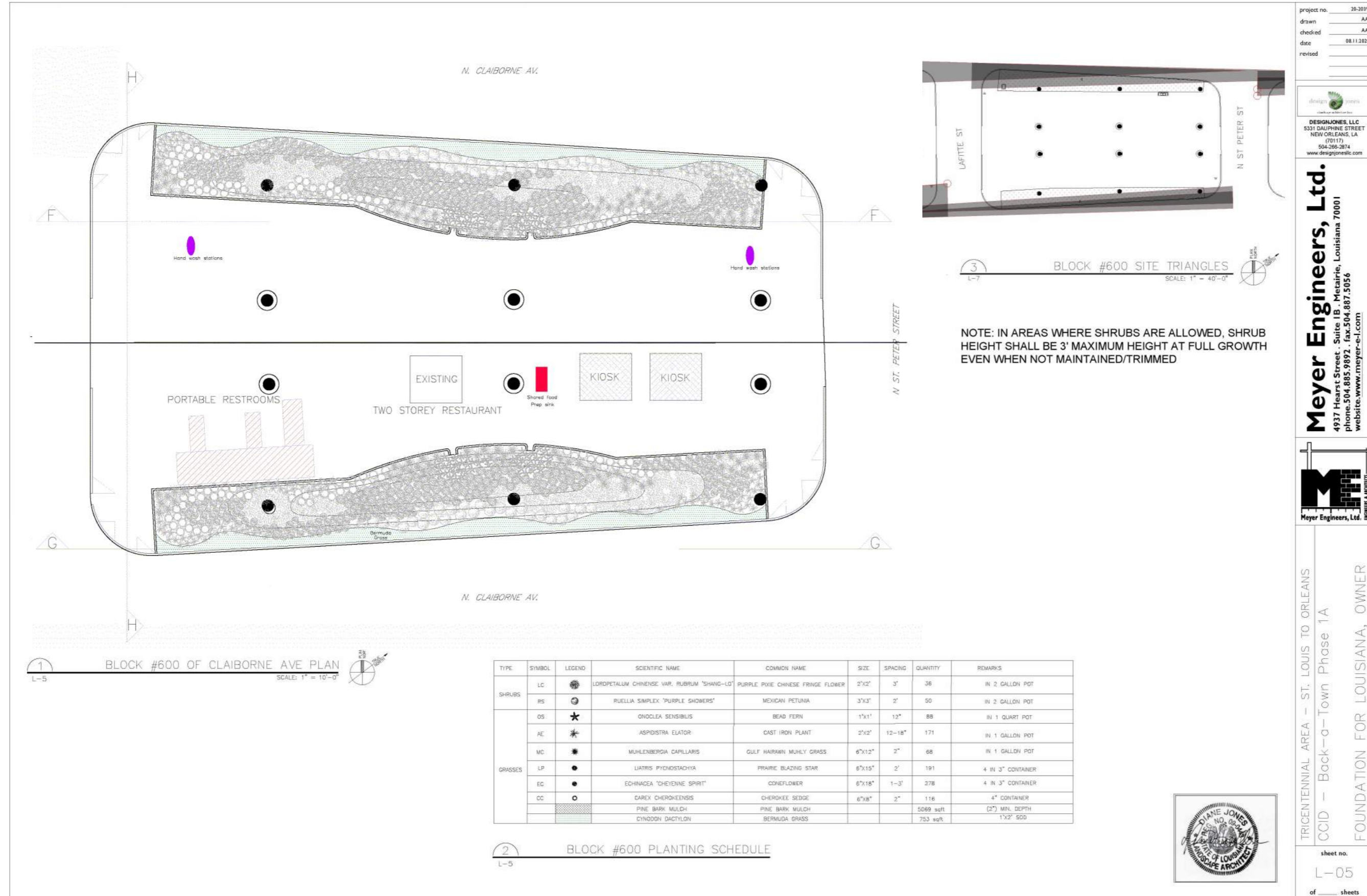
**ALL COMING SOON HERE...**



**instagram.com/knitsntreats**



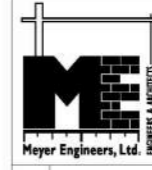
# LANDSCAPE PLAN 600 BLOCK



project no. 20-2019  
 drawn AA  
 checked AA  
 date 08.11.2021  
 revised

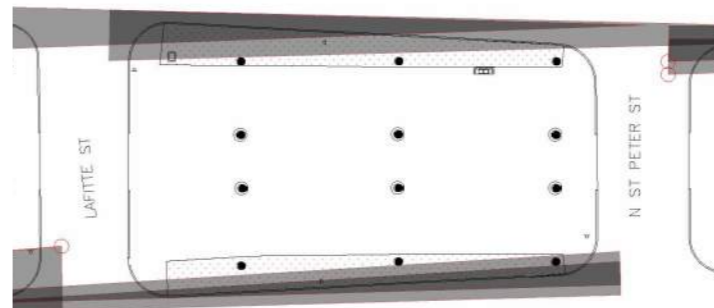
DESIGN JONES, LLC  
 5331 DAUPHINE STREET  
 NEW ORLEANS, LA  
 (70117)  
 504-266-2874  
 www.designjones.com

**Meyer Engineers, Ltd.**  
 4937 Hearst Street - Suite 1B - Metairie, Louisiana 70001  
 phone: 504.885.9892 - fax: 504.887.5056  
 website: www.meyer-e-l.com



TRICENTENNIAL AREA - ST. LOUIS TO ORLEANS  
 CCID - Back-a-Town Phase 1A  
 FOUNDATION FOR LOUISIANA, OWNER

sheet no.  
 L-05  
 of \_\_\_ sheets

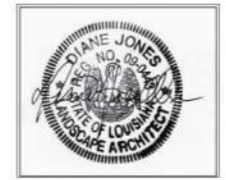


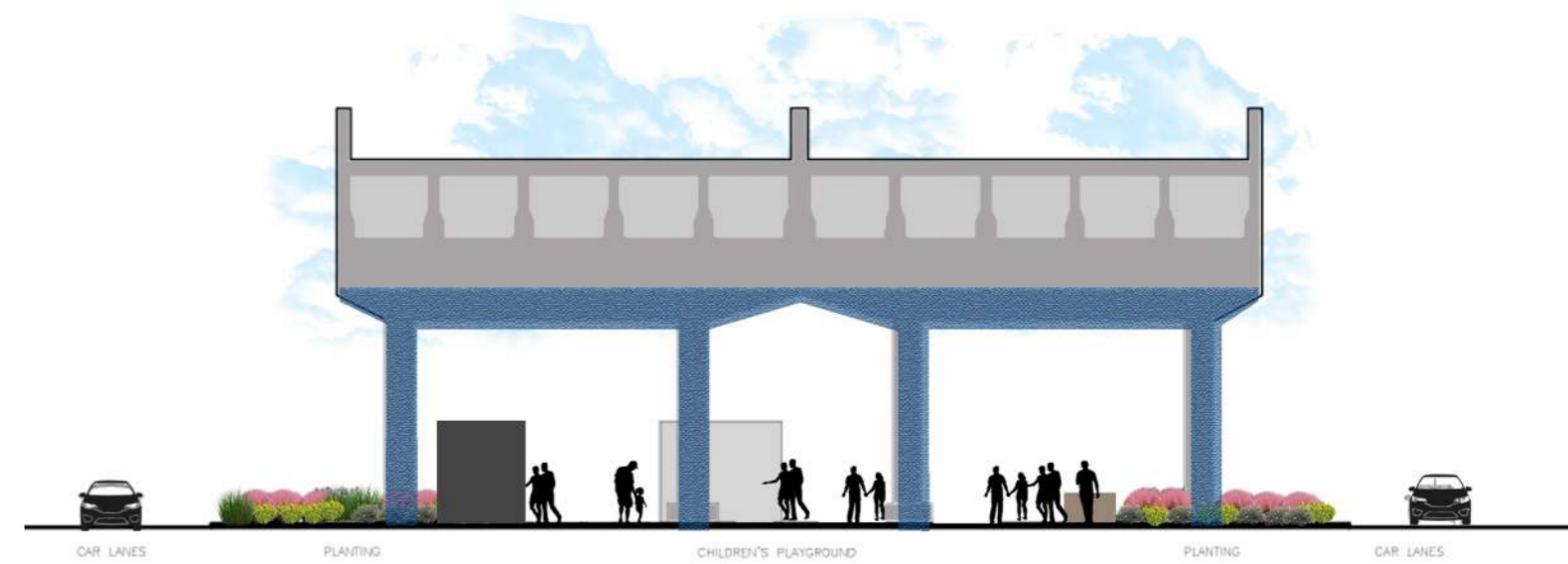
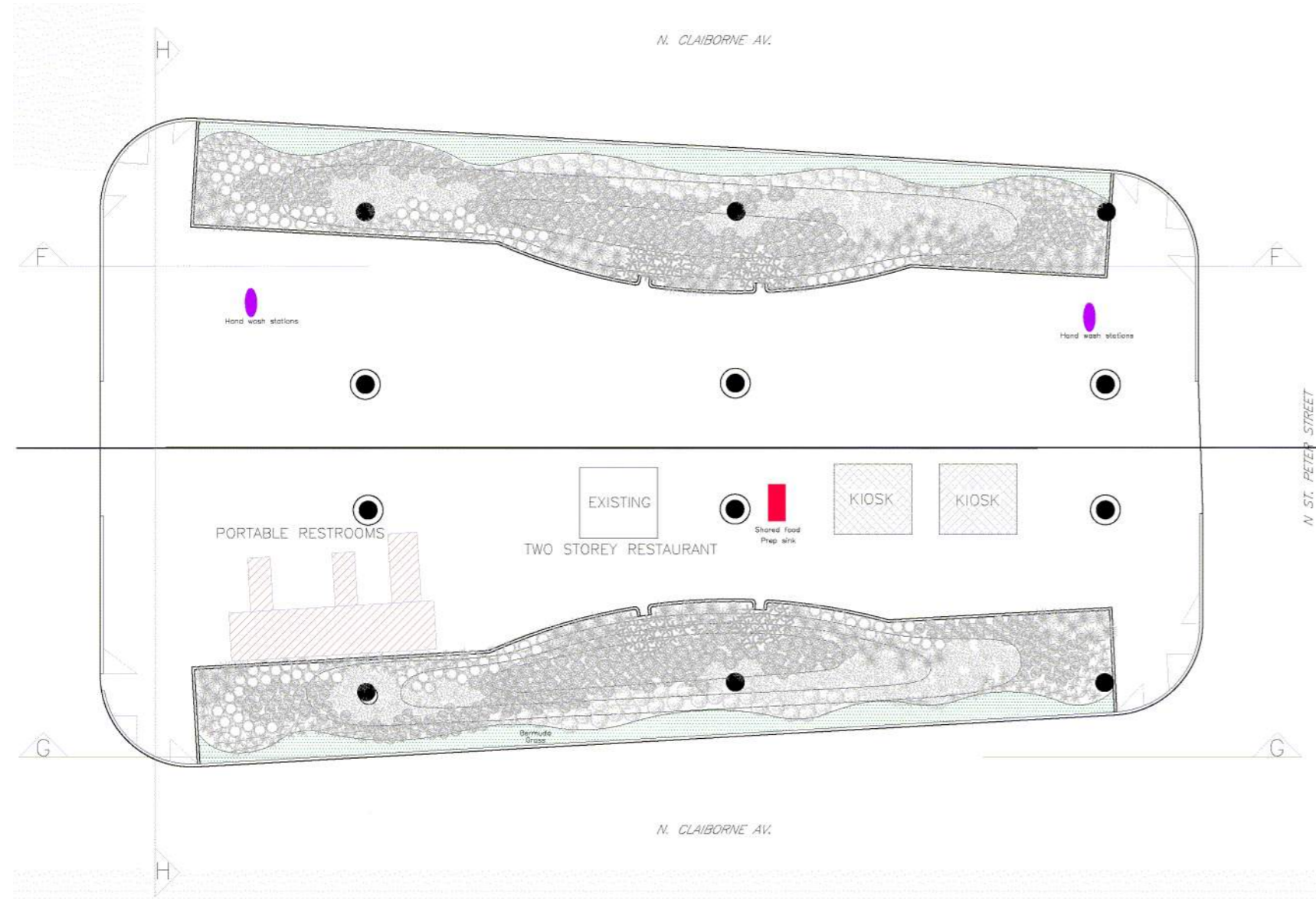
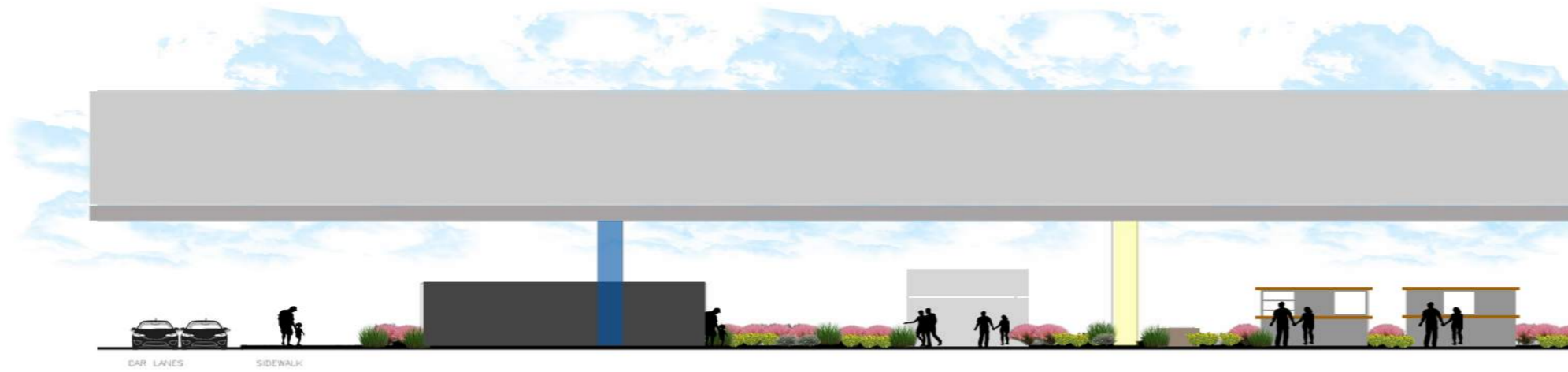
3 BLOCK #600 SITE TRIANGLES  
 SCALE: 1" = 40'-0"

NOTE: IN AREAS WHERE SHRUBS ARE ALLOWED, SHRUB HEIGHT SHALL BE 3' MAXIMUM HEIGHT AT FULL GROWTH EVEN WHEN NOT MAINTAINED/TRIMMED

## Major Design Components:

- Two-story Restaurant
- Rain Gardens
- Kiosks
- Portable Restrooms



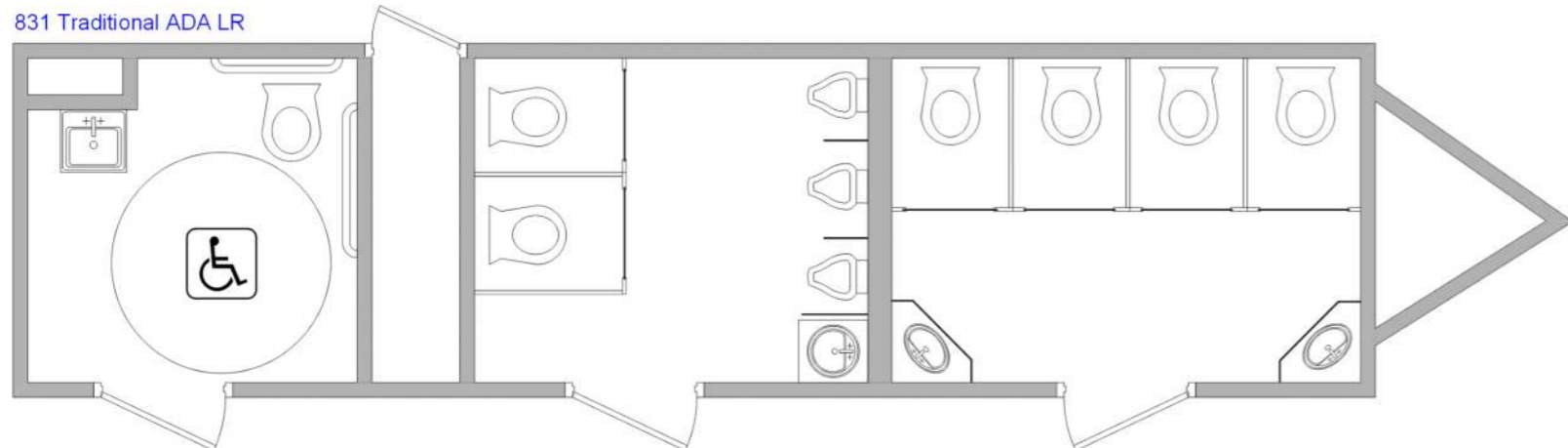




# PORTABLE UNITS - RESTROOM



831 Traditional ADA LR



# RAIN GARDEN VIEW 600 BLOCK



**BEFORE**



**AFTER**



Inspiration for Rain Barrels

Photo by Courtney Schoen



**BEFORE**



**AFTER**

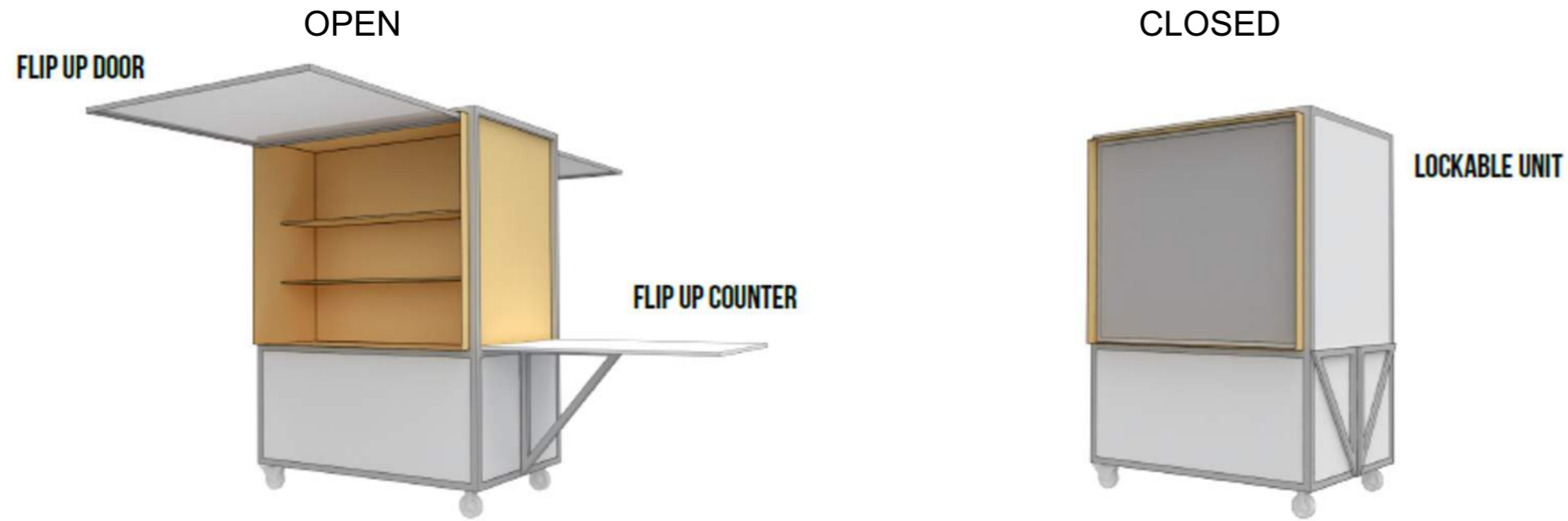
# SMALL MARKET BOOTH DESIGN



Built Market Booth

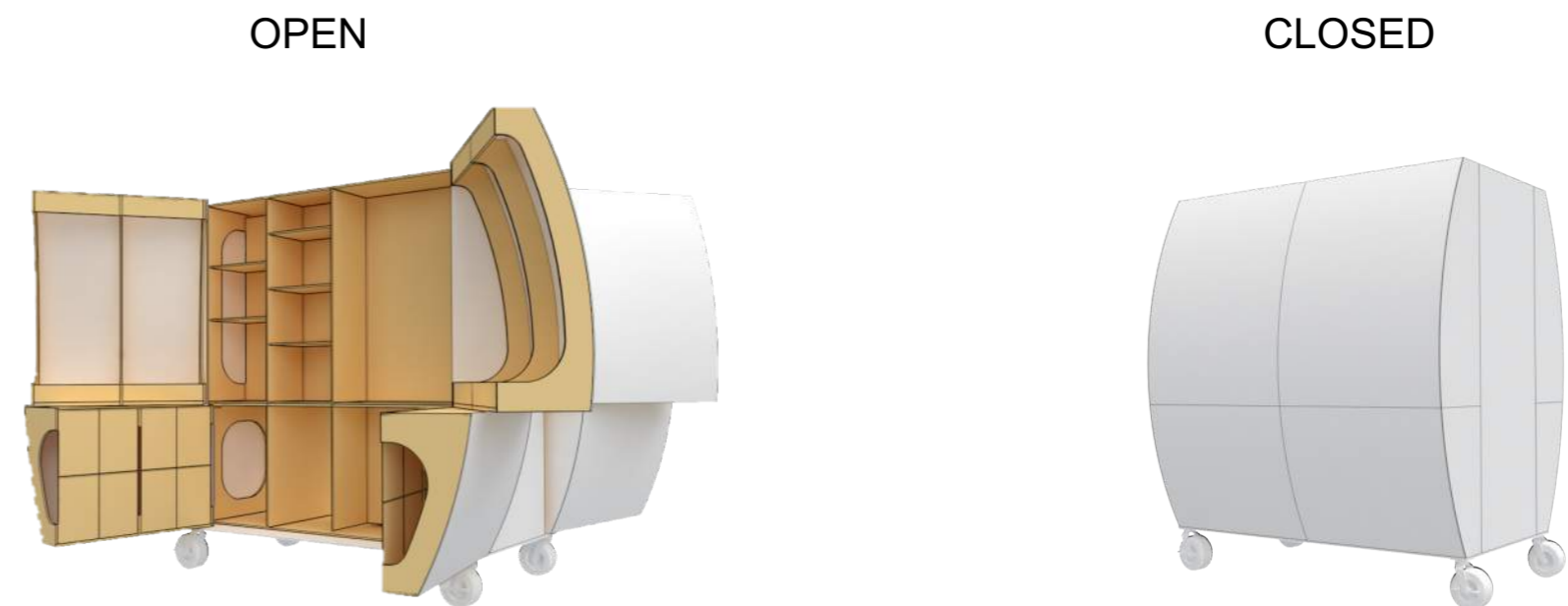


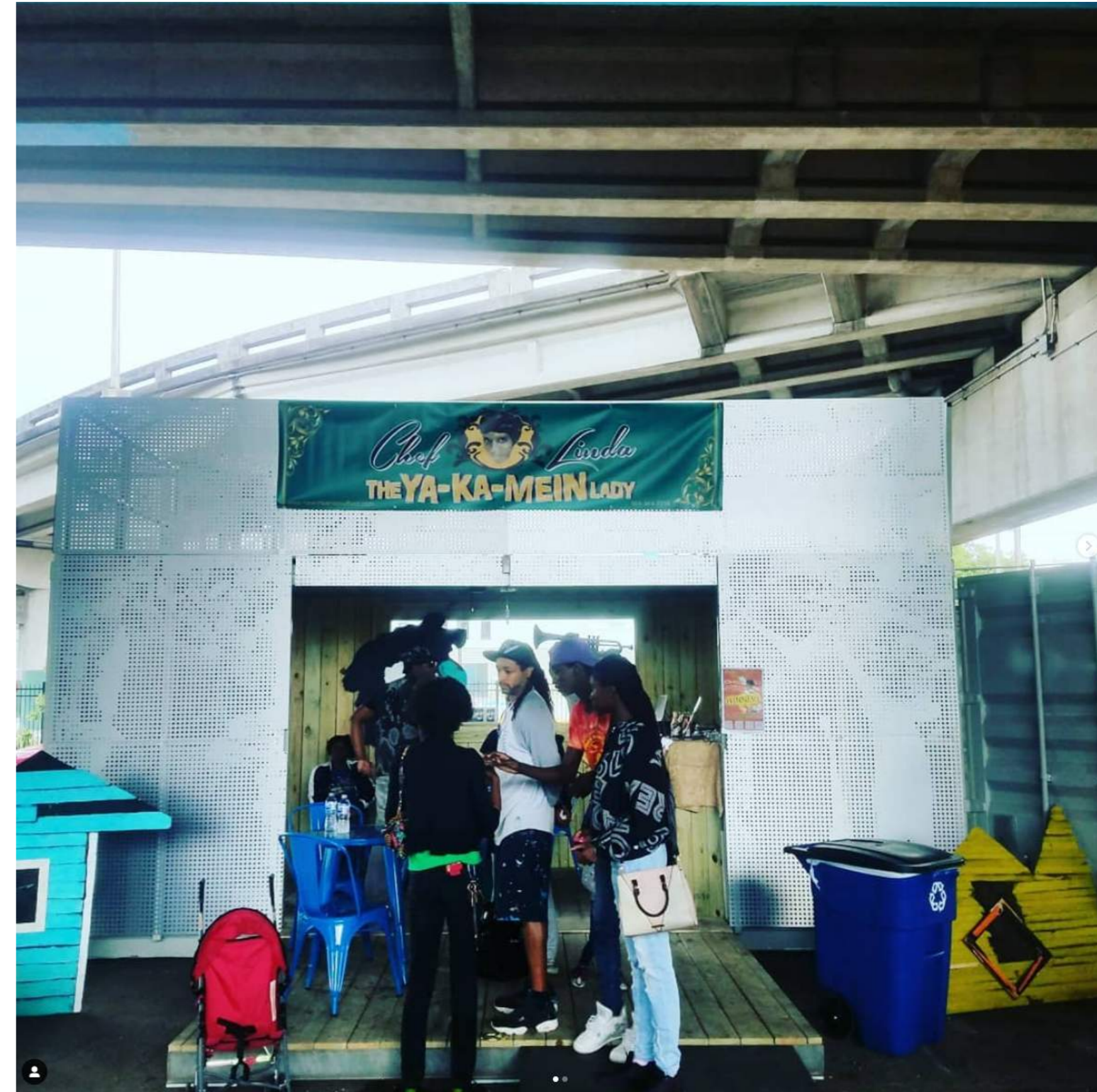
# SMALL MARKET BOOTH DESIGN 2



Built Market Booth

# SMALL MARKET BOOTH DESIGN 2



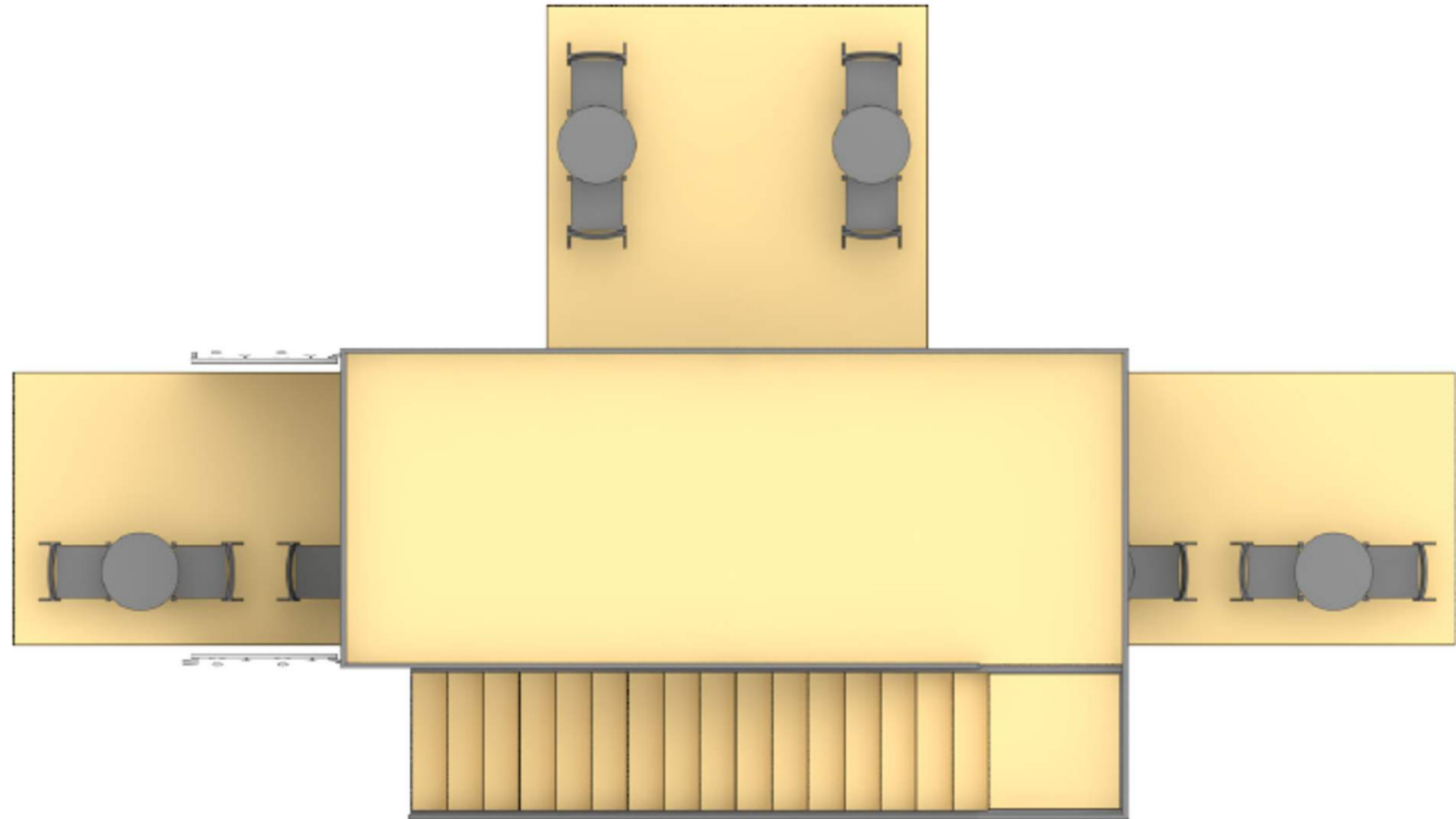


CLAIBORNE CULTURAL INNOVATION DISTRICT — DESIGN ADVISORY COMMISSION

**FOLDOUT CAFE UNIT**



# FOLDOUT CAFE UNIT





PRODUCE VENDOR



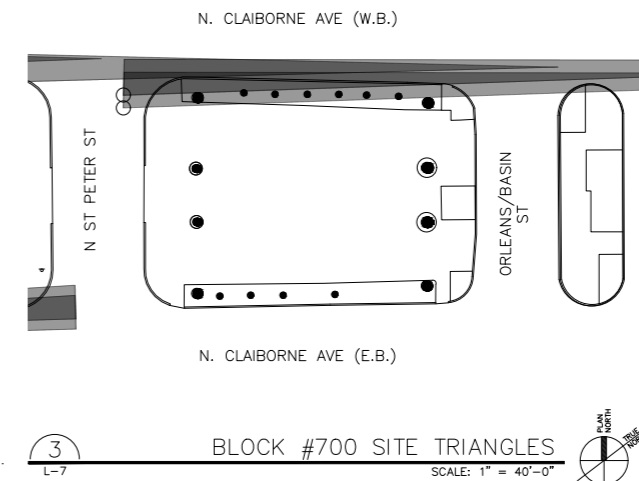
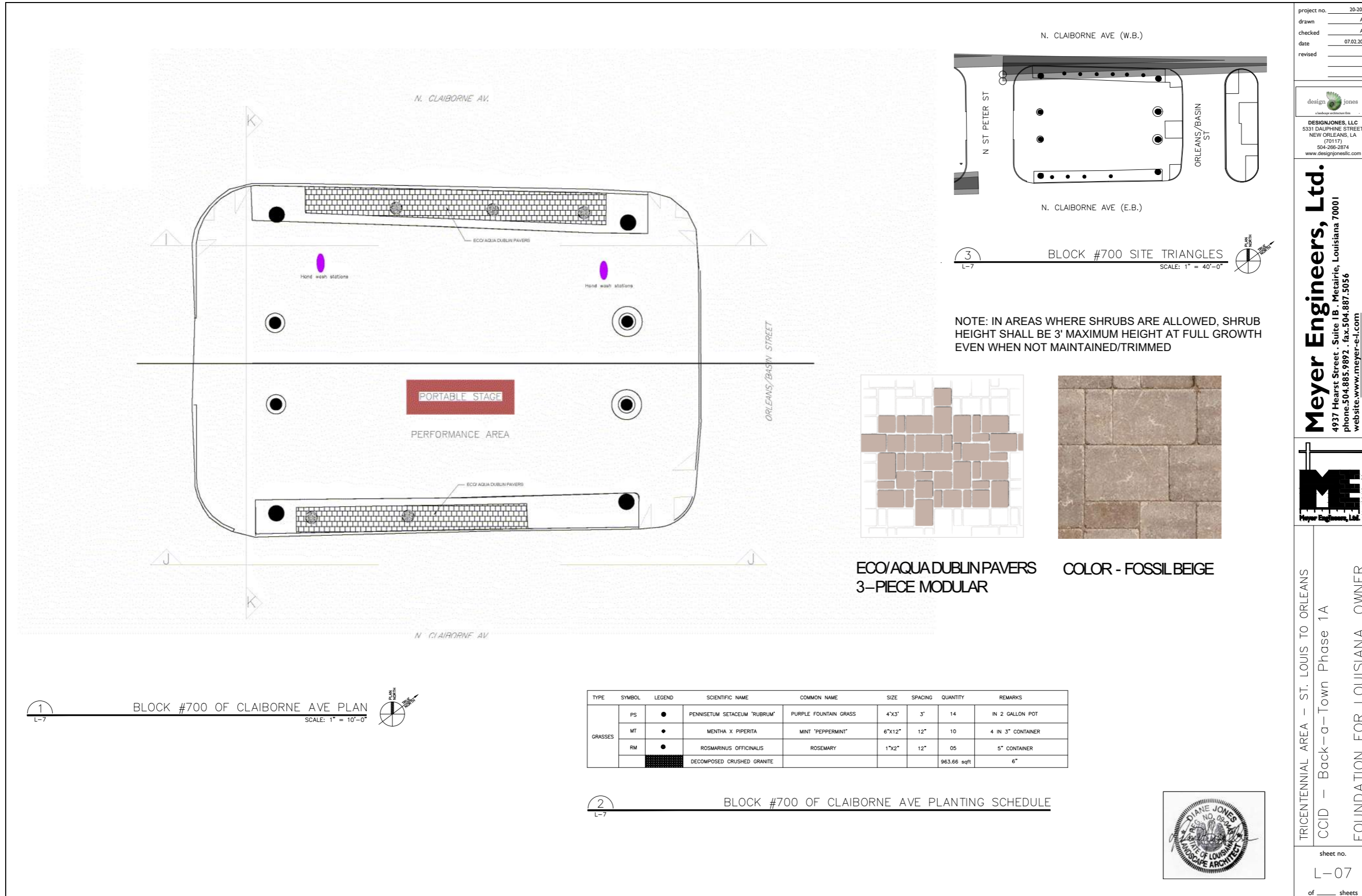
# PLAY EQUIPMENT



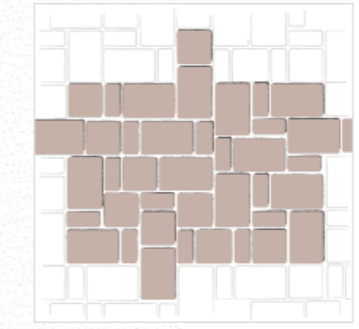
PLAY EQUIPMENT FLOW 1 BY KOPMAN



# LANDSCAPE PLAN 700 BLOCK



NOTE: IN AREAS WHERE SHRUBS ARE ALLOWED, SHRUB HEIGHT SHALL BE 3' MAXIMUM HEIGHT AT FULL GROWTH EVEN WHEN NOT MAINTAINED/TRIMMED

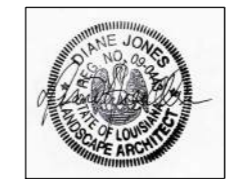


ECO/AQUA DUBLIN PAVERS  
3-PIECE MODULAR  
COLOR - FOSSIL BEIGE

1  
L-7  
BLOCK #700 OF CLAIBORNE AVE PLAN  
SCALE: 1" = 10'-0"

TYPE	SYMBOL	LEGEND	SCIENTIFIC NAME	COMMON NAME	SIZE	SPACING	QUANTITY	REMARKS
GRASSES	PS	●	PENNISETUM SETACEUM "RUBRUM"	PURPLE FOUNTAIN GRASS	4"x3"	3'	14	IN 2 GALLON POT
	MT	●	MENTHA X PIPERITA	MINT "PEPPERMINT"	6"x12"	12"	10	4 IN 3" CONTAINER
	RM	●	ROSMARINUS OFFICINALIS	ROSEMARY	1"x2"	12"	05	5" CONTAINER
			DECOMPOSED CRUSHED GRANITE				963.66 sqft	6"

2  
L-7  
BLOCK #700 OF CLAIBORNE AVE PLANTING SCHEDULE



project no. 20-2039  
 drawn AA  
 checked AA  
 date 07.02.2021  
 revised

design Jones  
 LANDSCAPE ARCHITECTURE LLC  
 DESIGN JONES, LLC  
 5311 GAULPINE STREET  
 NEW ORLEANS, LA  
 (70117)  
 504-266-2874  
 www.designjonesllc.com

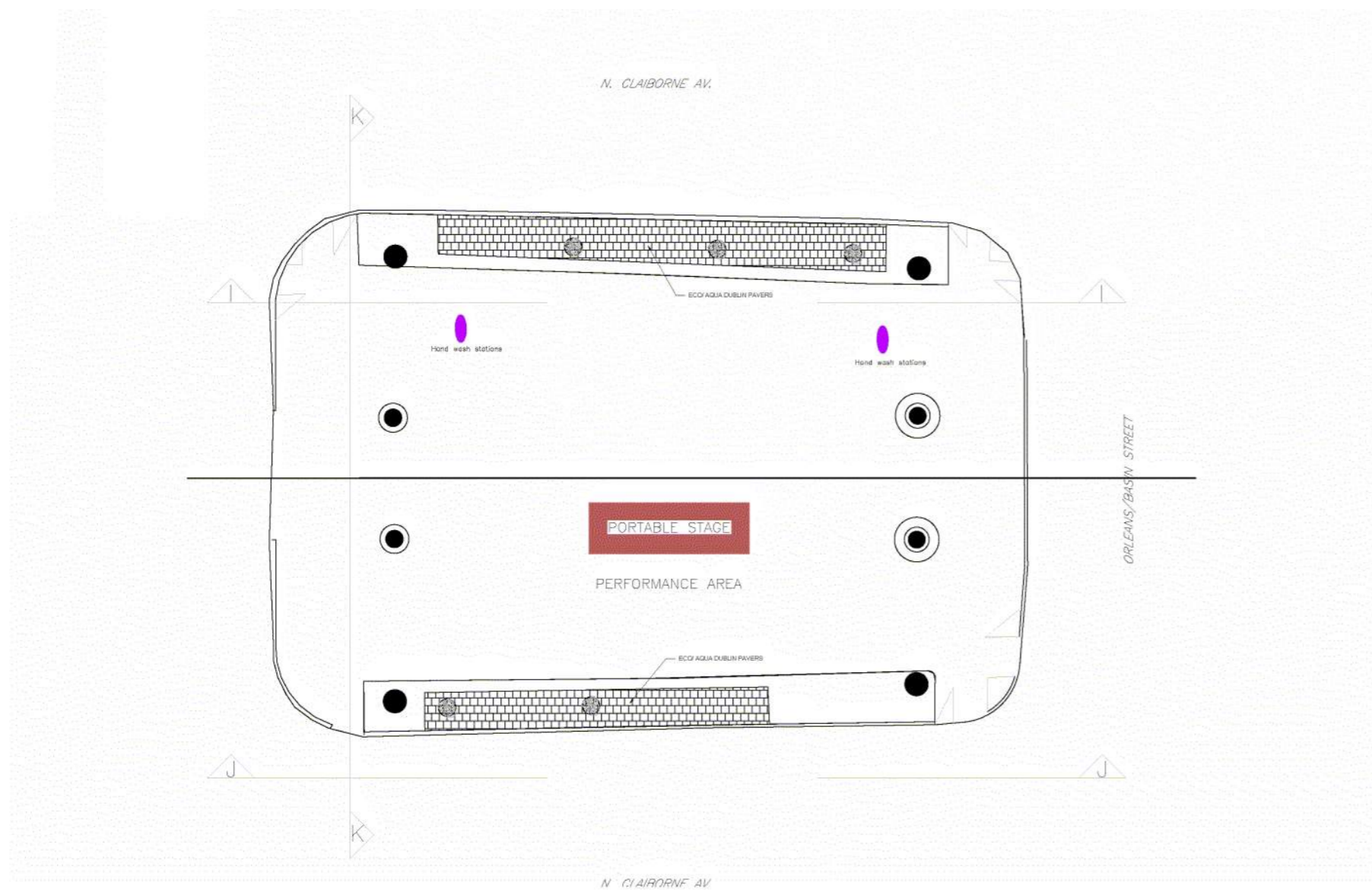
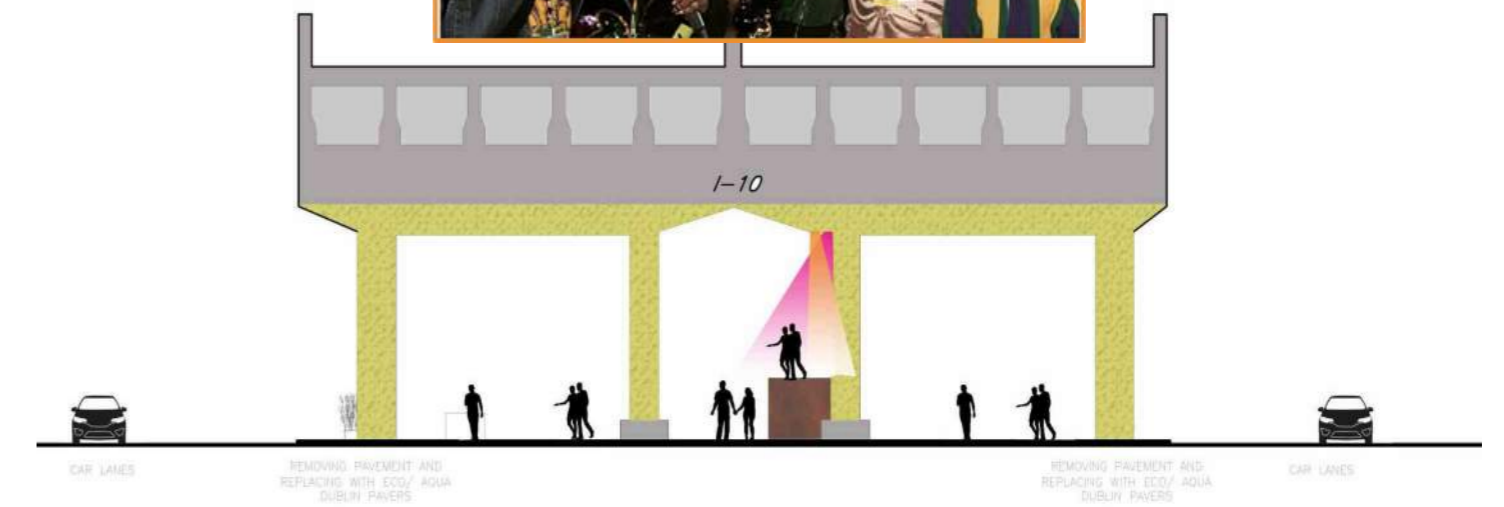
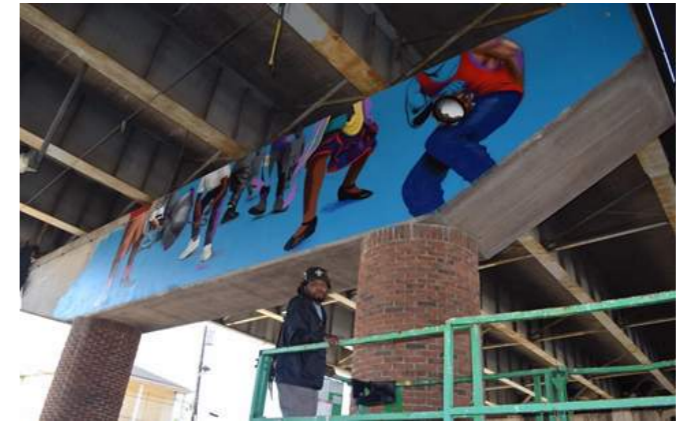
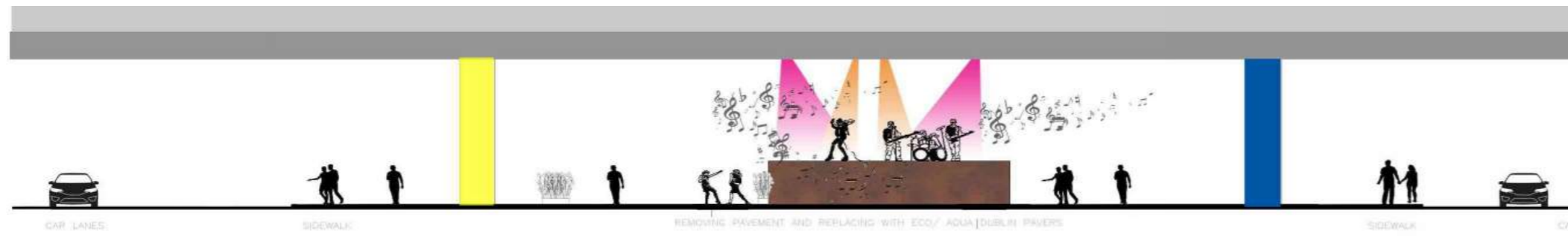
**Meyer Engineers, Ltd.**  
 4937 Heart Street, Suite 101 Metairie, Louisiana 70001  
 phone.504.885.5892 . fax.504.887.5056  
 website.www.meyer-ei.com

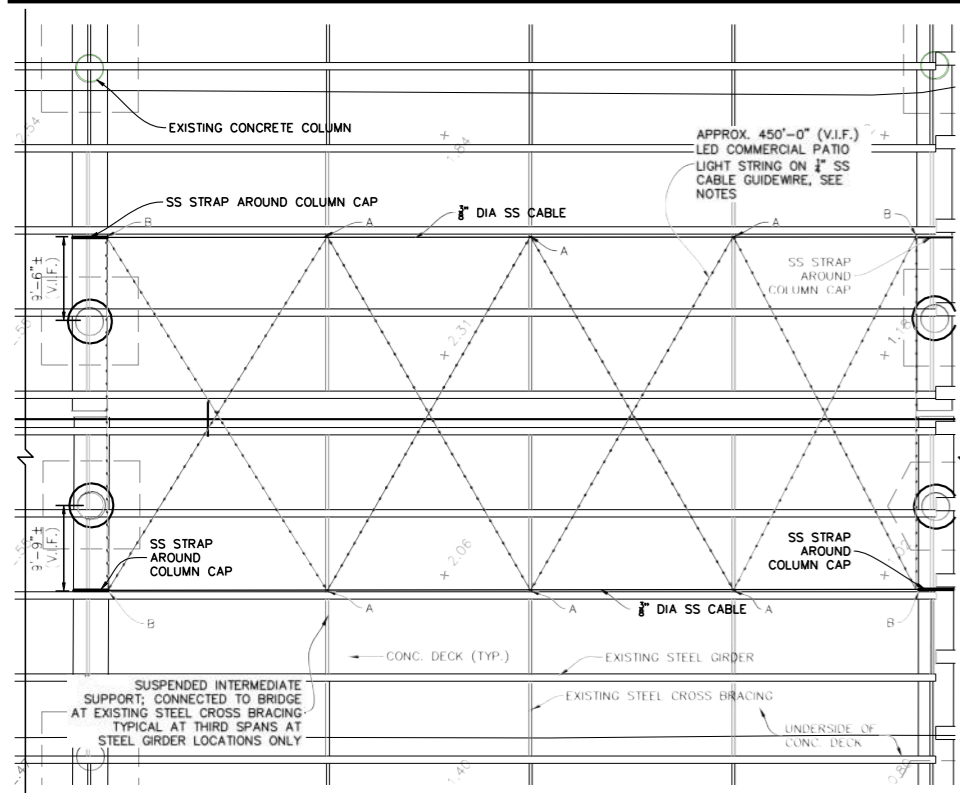
TRICENTENNIAL AREA - ST. LOUIS TO ORLEANS  
 CCID - Back-a-Town Phase 1A  
 FOUNDATION FOR LOUISIANA, OWNER

sheet no.  
 L-07  
 of \_\_\_ sheets

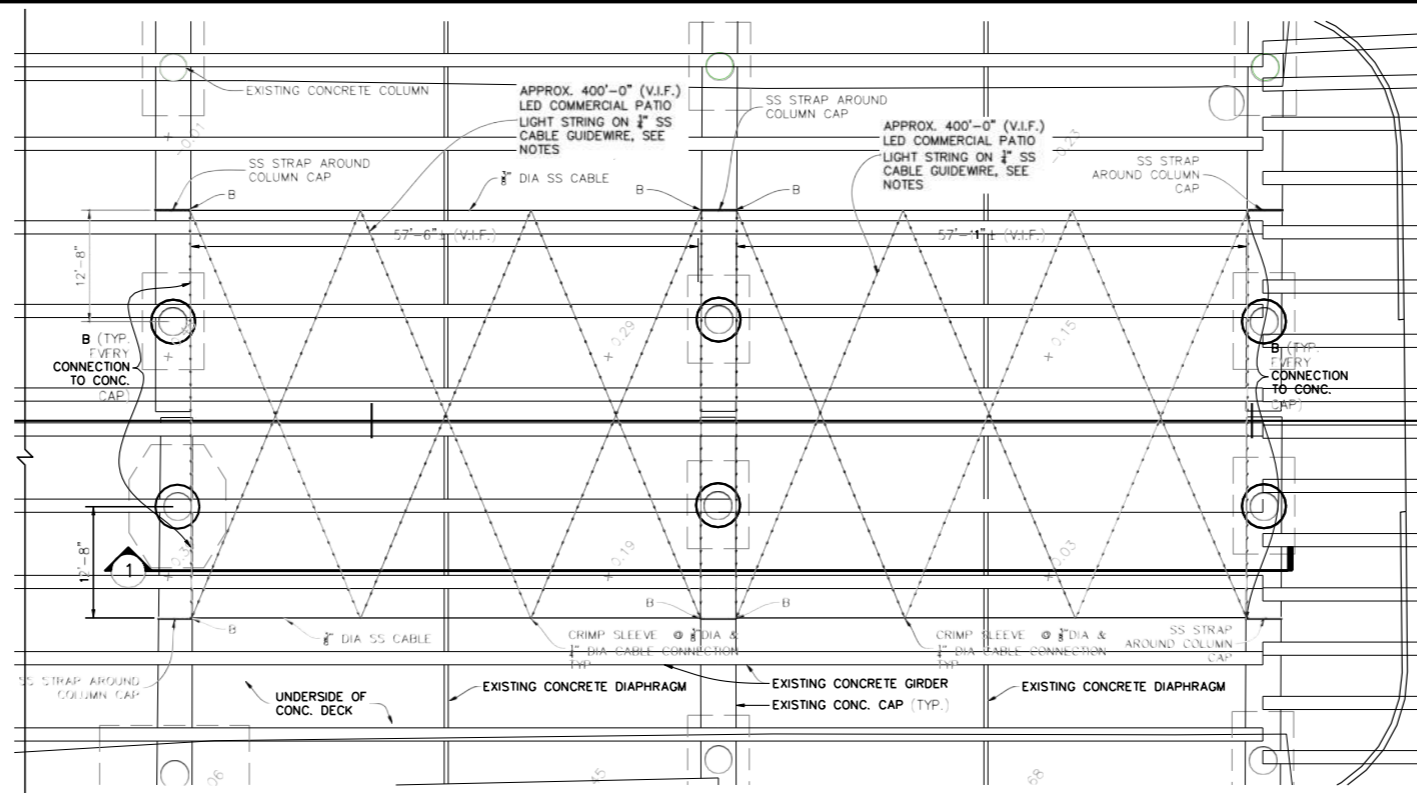
## Major Design Components:

- Permeable Paving
- Portable Stage + Performance Area

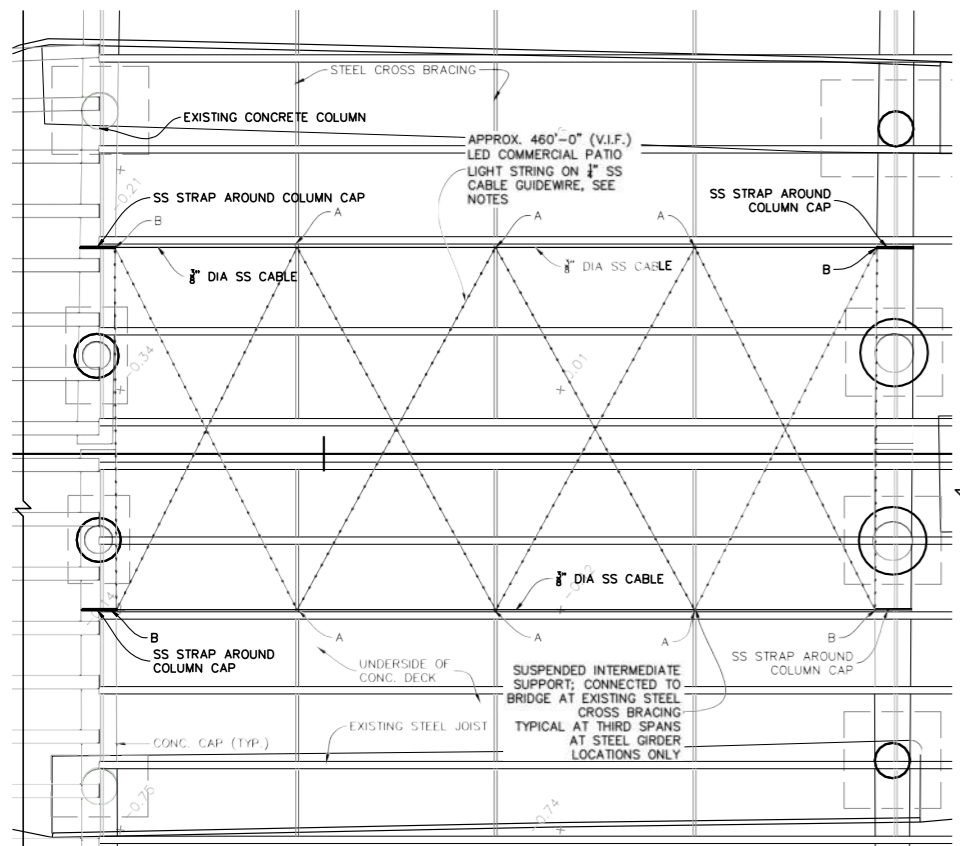




**A : BLOCK #500** LAFITTE GREENWAY TO LAFITTE STREET (BLOCK #500) (STEEL STRUCTURE)



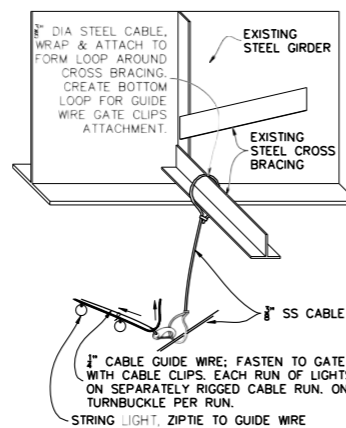
**B : BLOCK #600** LAFITTE STREET TO ST. PETER STREET (BLOCK #600) (CONCRETE STRUCTURE)



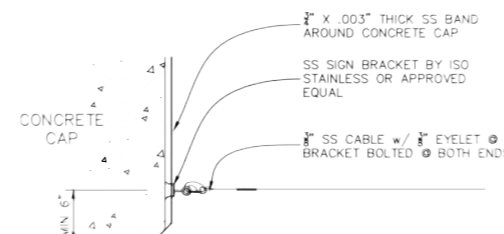
**C : BLOCK #700** ST. PETER STREET TO ORLEANS AVE. (BLOCK #700) (STEEL STRUCTURE)

**1 REFLECTED CEILING PLAN - CANOPY & LIGHTING** SCALE: 1/8" = 1'-0"

NOTE:  
 - ALL DIMENSIONS TO BE VERIFIED IN FIELD PRIOR TO CONSTRUCTION  
 - NOTE "A" & "B" DENOTES CONNECTION TYPE AT LOCATION. SEE DETAIL 2/A-01.



**CONNECTION TYPE A** (AXONOMETRIC, NOT TO SCALE)

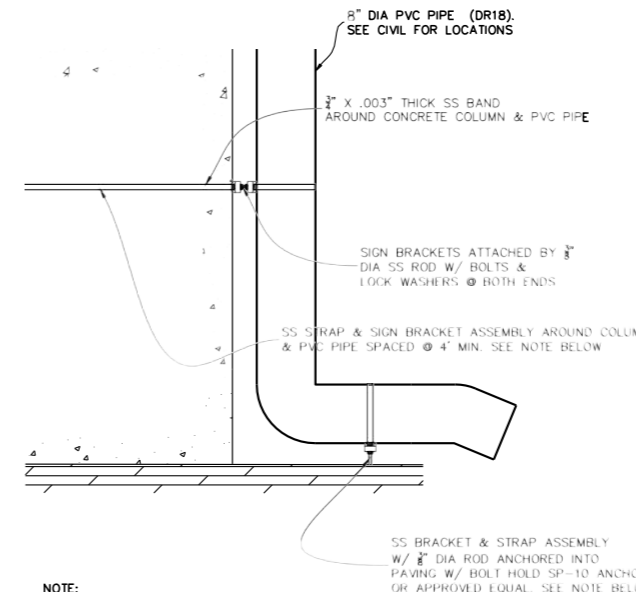


**CONNECTION TYPE B**

**2 RIGGING CONNECTION DETAILS** SCALE: 1/8" = 1'-0"

- LIGHTING NOTES:
- LED STRING LIGHTS TO BE PLASTIC BULB 330 FT BLACK COMMERCIAL MEDIUM STRING LIGHT & LED S14 PROFESSIONAL WARM WHITE PLASTIC BULBS. 24" BULB SPACING. STRING LIGHT RUNS TO BE SPLICED TOGETHER TO CREATE CONTINUOUS LIGHT STRING WITH 2" SWAG DEPTH AT MIDDLE. CANOPY BLOCK TO HAVE 8" SWAG DEPTH AT MIDDLE. SEE RIGGING DETAILS FOR CONNECTIONS AND GUIDE WIRE INFORMATION.
  - STRING LIGHTS TO USE 1/4" GUIDE WIRE RIGGING SYSTEM. EACH RUN OF GUIDE WIRE TO BE SEPARATELY RIGGED. SEE DETAIL 4/A-01 FOR MORE INFORMATION.
  - LIGHT/GUIDE WIRE RUNS TO HAVE APPROX. 2'-0" SWAG DEPTH.
  - STAINLESS STEEL STRAPS AND SIGN BRACKETS BY ISO STAINLESS OR APPROVED EQUAL.
  - ALL STEEL CABLES TO BE 304 STAINLESS STEEL AND ALL STEEL STRAPS TO BE 201 STAINLESS STEEL.
  - ALL STAINLESS STEEL STRAPS SHALL HAVE A MAXIMUM PRE-TENSION OF 400 LBS.
  - CABLE SUPPORT SYSTEM DESIGNED TO WITHSTAND 15.3 MPH WINDS AND TO SUPPORT ALL LOADS SHOWN IN PLANS.
  - ALL CONNECTIONS TO BRIDGE MUST BE DOTD APPROVED.
  - PRODUCT BASED ON INFORMATION FROM: [PARTYLIGHTS.COM](http://PARTYLIGHTS.COM), CONTACT: (866) 758-583.

- NOTE:
- 1-10 BRIDGE IS DOTD STRUCTURE NO. 02364509004362
- WIND LOADING NOTES:
1. ASCE 7-10 BASIC WIND SPEED: 143 MPH
  2. RISK CATEGORY: II
  3. EXPOSURE: B



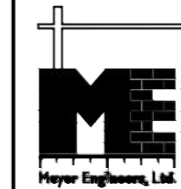
- NOTE:
- SS STRAP AND BRACKETS TO BE FURNISHED BY ISO STAINLESS OR APPROVED EQUAL
  - ALL ASPHALT ANCHOR LOCATIONS TO BE INSPECTED PRIOR TO INSTALLATION. IF FOUND TO BE SEVERELY CRACKED OR THE COLUMN FOUNDATION FOUND TO BE AT A DEPTH LESS THAN THE REQUIRED 6", THE ROD IS TO BE ANCHORED INTO A 12" X 12" X 12" CONCRETE PAVER W/ 1/2" DIA THREADED ROD AND HILTI HT-HY 70 EPOXY.

**3 DRAIN PIPE CONNECTION DETAIL** SCALE: 1/8" = 1'-0"

project no. 20-2038  
 drawn RJK  
 checked DHD  
 date 7/13/2021  
 revised

PRELIMINARY - FOR REVIEW ONLY  
 DAVID H. DUPRE  
 P.E. #23422

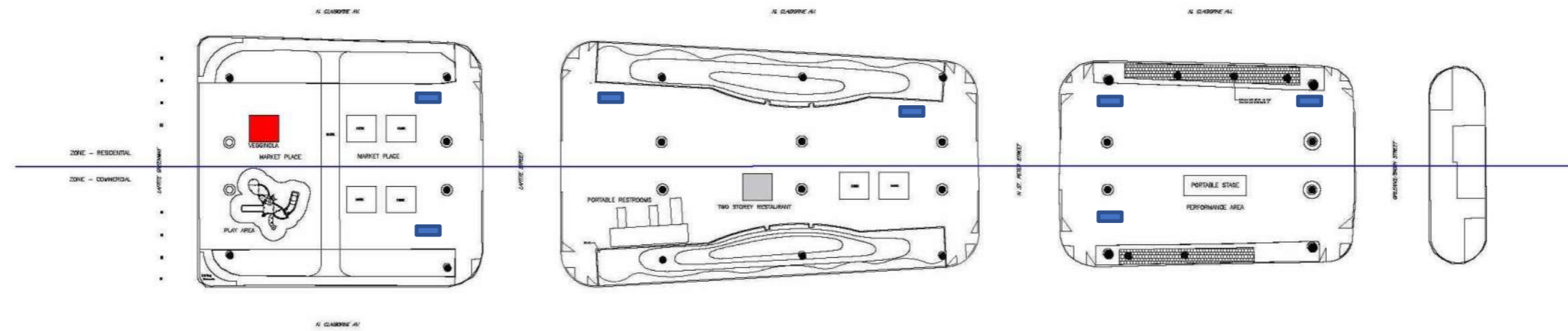
**Meyer Engineers, Ltd.**  
 4937 Hearst Street . Suite 1B . Metairie, Louisiana 70001  
 phone.504.885.9892 . fax.504-887-5056  
 website.[www.meyer-e-l.com](http://www.meyer-e-l.com)



STRING LIGHTING AND DRAIN PIPE DETAILS  
 CCID - BACK-A-TOWN PHASE 1A  
 FOUNDATION FOR LOUISIANA, OWNER

sheet no. A-01  
 of sheets

# RESPONSIBLE MANAGEMENT OF WASTE THROUGH THESE WASTE RECEPTACLES



Location of Trash cans

# RAIN GARDEN VIEW **400** BLOCK at LAFITTE GREENWAY CORRIDOR **PROPOSED FOR PHASE 1 C**

*ASPIRATIONAL W/ LaDOTD APPROVAL*



**BEFORE**



**AFTER**

Nyree A. Ramsey, JD, M.Ed  
Claiborne Cultural Innovation District Director  
**Ujamaa Economic Development Corporation**  
**1204 N. Claiborne Ave.**  
**New Orleans, LA 70116**  
[nramsey@ujamaaedc.org](mailto:nramsey@ujamaaedc.org)  
mobile: (504) 258-1389

Austin Allen III, PH.D., ASLA  
Project Manager  
**Design Jones LLC**  
[austin@designjonesllc.com](mailto:austin@designjonesllc.com)  
mobile: (972) 755-9782  
P.O. Box 3026  
New Orleans, LA 70177



*CNO Department of Capital Projects*