

ENCROACHMENT GENERAL NOTES

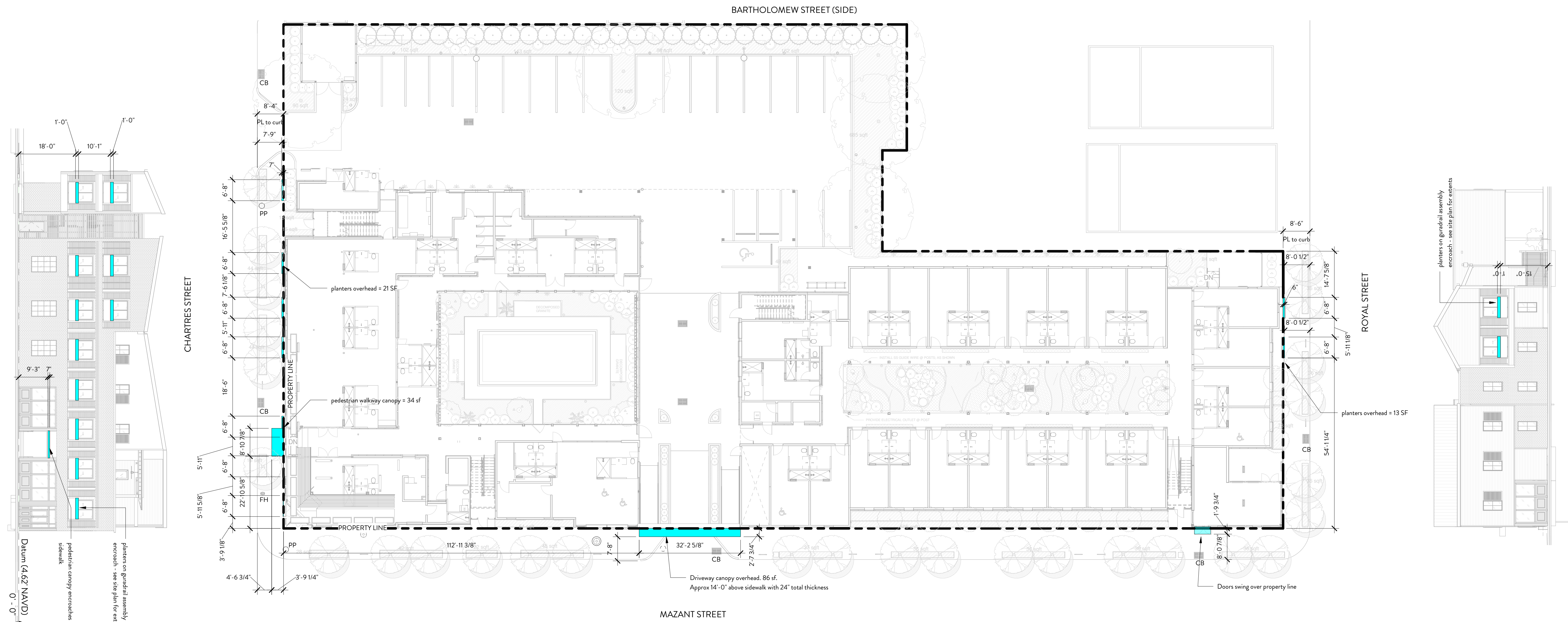
1. See survey for detailed information about existing ROW conditions. Distances from property line to curb are based on proposed work, but existing curbs should be referenced on the survey.
2. Development is actively working with Entergy to rework power poles along Chartres and remove power poles along Mazant St.
3. No existing street trees to remain. See provided landscape plan for detailed information about proposed trees in the ROW.

PLAN KEY

- CB - Catch Basin
- PP - Power Pole



**ARRIVE HOTEL**  
600 Mazant Street  
New Orleans, LA 70117



1 Site Plan\_Encroachment Plan

A100b 1/16" = 1'-0"

