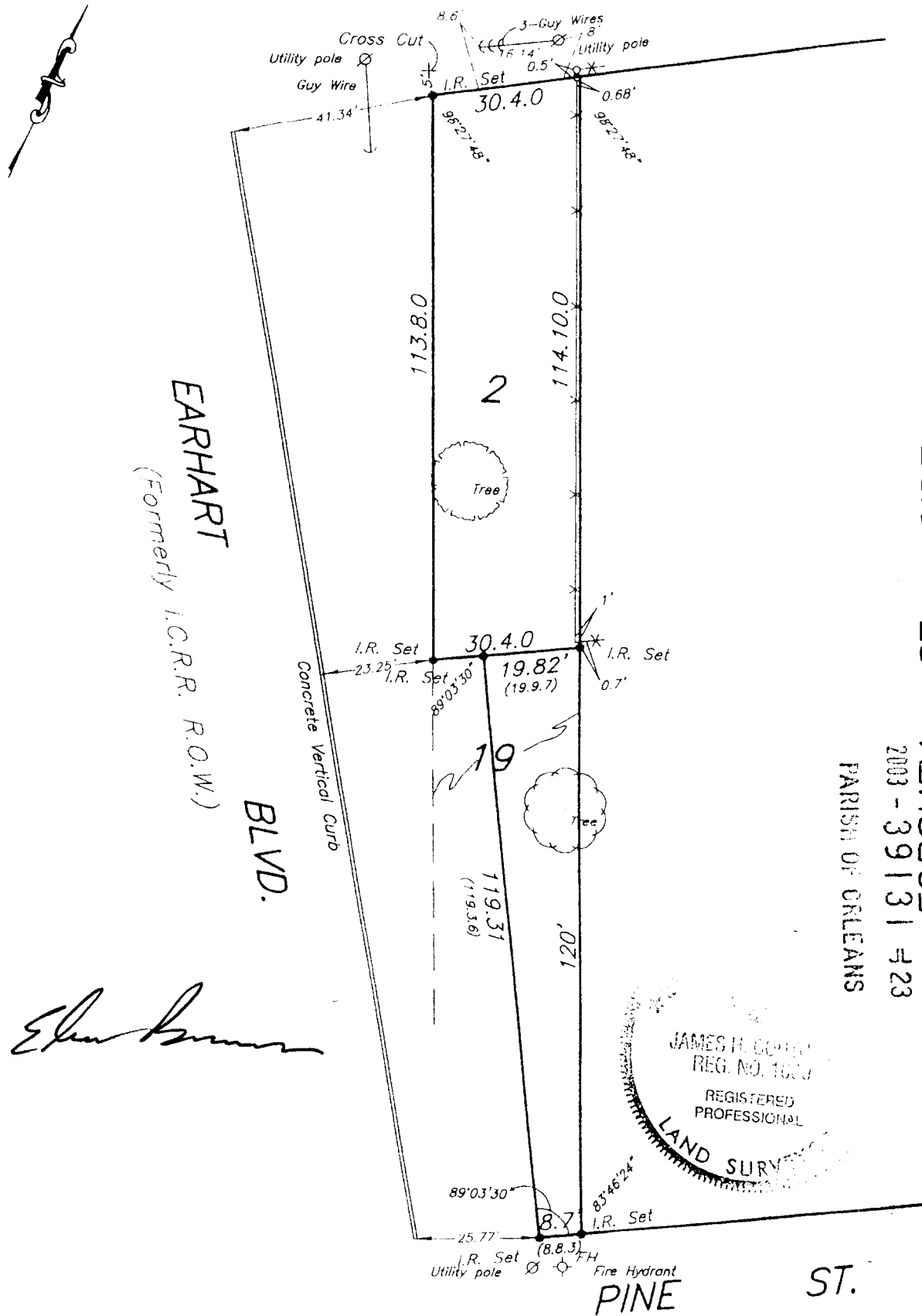


SQ. NO. 500  
SEVENTH DISTRICT

ORLEANS PARISH  
NEW ORLEANS, LA

LOWERLINE ST.



SIDE ST.

2003-39131-23

PARISH OF ORLEANS

THE SERVITUDES SHOWN ON THIS PLAT ARE LIMITED TO THOSE FURNISHED TO US. THERE IS NO REPRESENTATION THAT ALL APPLICABLE SERVITUDES ARE SHOWN HEREON. THE SURVEYOR HAS MADE NO TITLE SEARCH OR PUBLIC RECORD SEARCH IN COMPILING DATA FOR THIS SURVEY.

Date: May 21, 2003

Scale: 1" = 30'

This plat represents an actual ground survey made by me or under my direct supervision and control and meets the requirements for the Minimum Standards for Property Boundary Surveys as found in Louisiana Administrative Code TITLE 46:LXI, Chapter 25 for a Class "C" survey.  
Made at the request of Elvin Brown

Gilbert, Kelly & Couturie, Inc., Surveying & Engineering  
2121 N. Causeway Blvd., Metairie LA 70001 (504) 836-2121