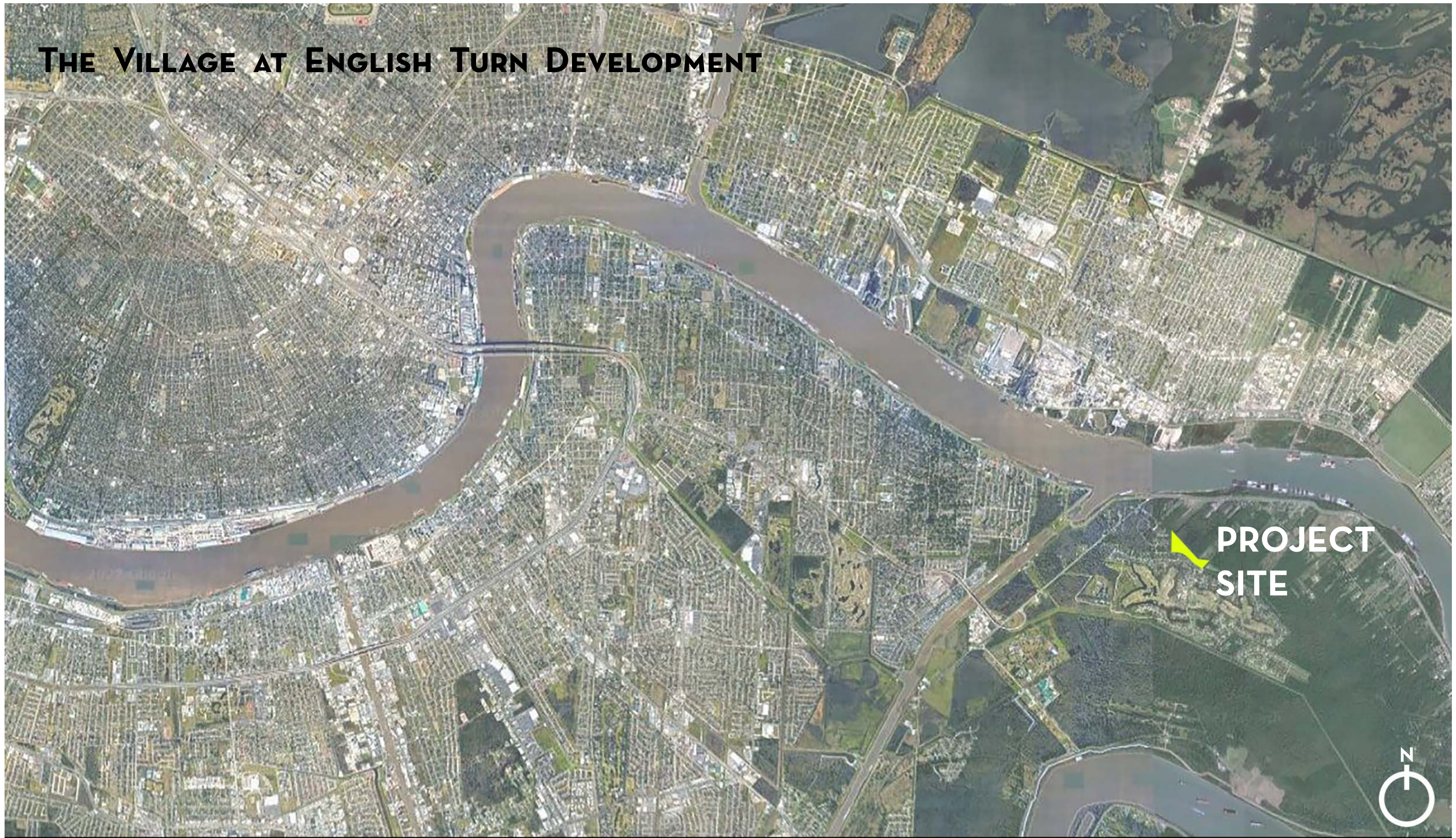
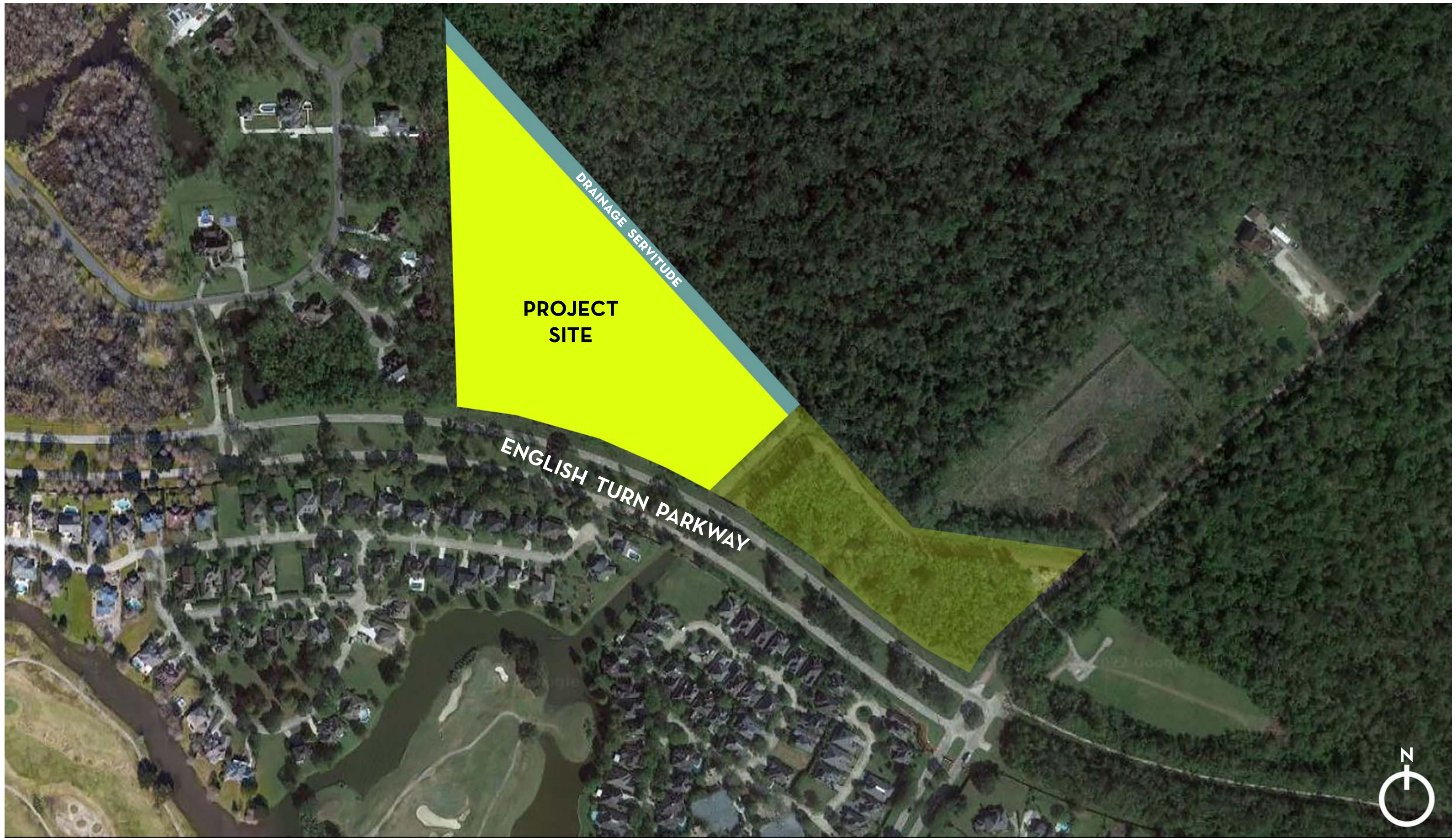


# THE VILLAGE AT ENGLISH TURN DEVELOPMENT



**PROJECT  
SITE**





**PROJECT  
SITE**

**DRAINAGE SERVITUDE**

**ENGLISH TURN PARKWAY**



**1562.37'**

**70' DRAINAGE SERVITUDE (20' REAR YARD SETBACK)**

**ZONE: S-RM1 MULTI-FAMILY RESIDENTIAL DISTRICT**

- MIN. LOT AREA: 1,250 SF/DU (2,663 SF/DU ACTUAL)
- 45' MAXIMUM BUILDING HEIGHT
- 40% MIN. PERMEABLE OPEN SPACE
- 20' MINIMUM SPACE BETWEEN BUILDINGS

**5' SIDEYARD SETBACK**

**418.83'**

**SERVITUDE**

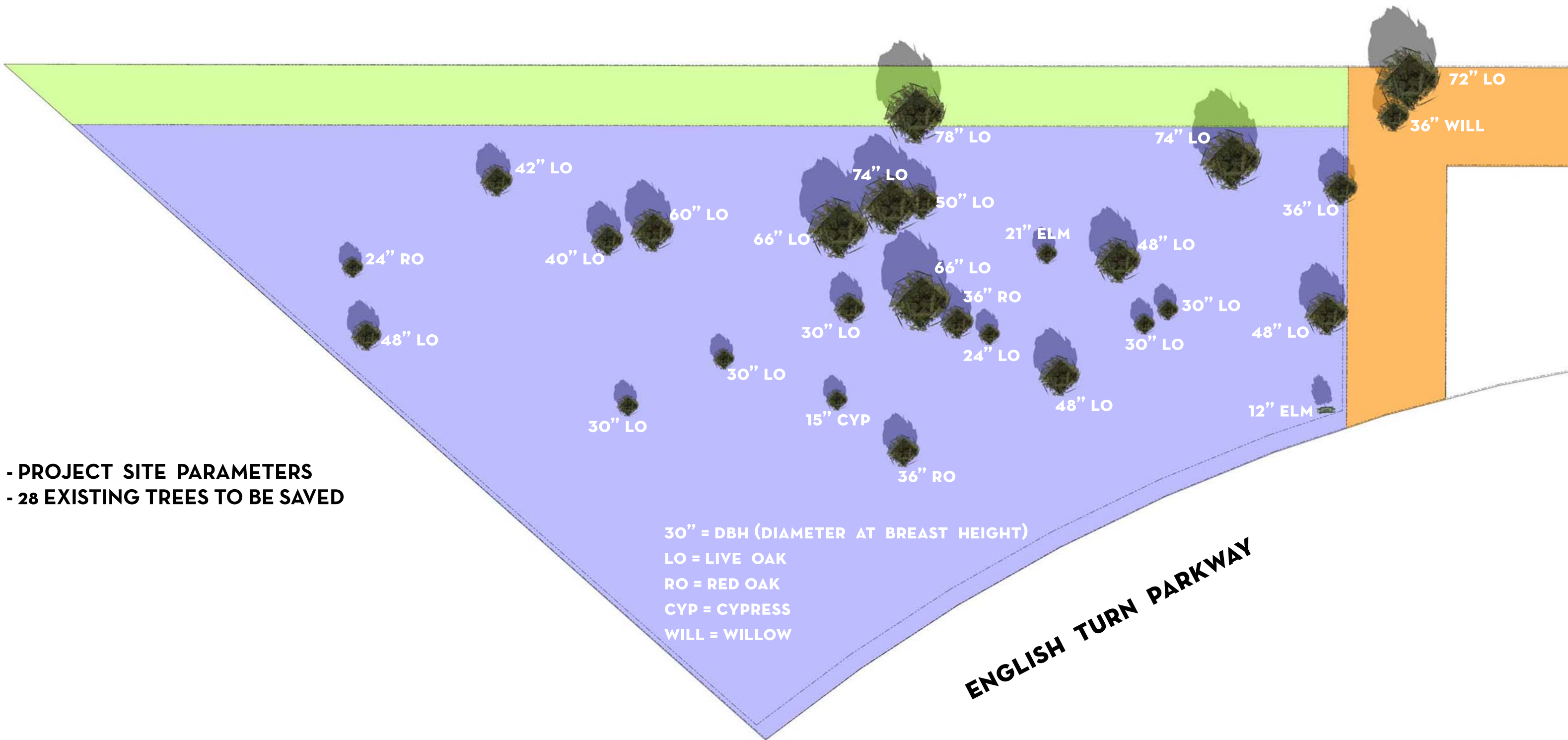
**DRAINAGE**

**5' SIDEYARD SETBACK**  
**1183.28'**

**20' FRONT YARD SETBACK**  
**770.50'**

**ENGLISH TURN PARKWAY**

- PROJECT SITE PARAMETERS



- PROJECT SITE PARAMETERS  
 - 28 EXISTING TREES TO BE SAVED

30" = DBH (DIAMETER AT BREAST HEIGHT)  
 LO = LIVE OAK  
 RO = RED OAK  
 CYP = CYPRESS  
 WILL = WILLOW

**ENGLISH TURN PARKWAY**



- PROJECT SITE PARAMETERS
- 28 EXISTING TREES TO BE SAVED
- BUILDING PLACEMENT



- PROJECT SITE PARAMETERS
- 28 EXISTING TREES TO BE SAVED
- BUILDING PLACEMENT
- VEHICULAR / PEDESTRIAN CIRCULATION

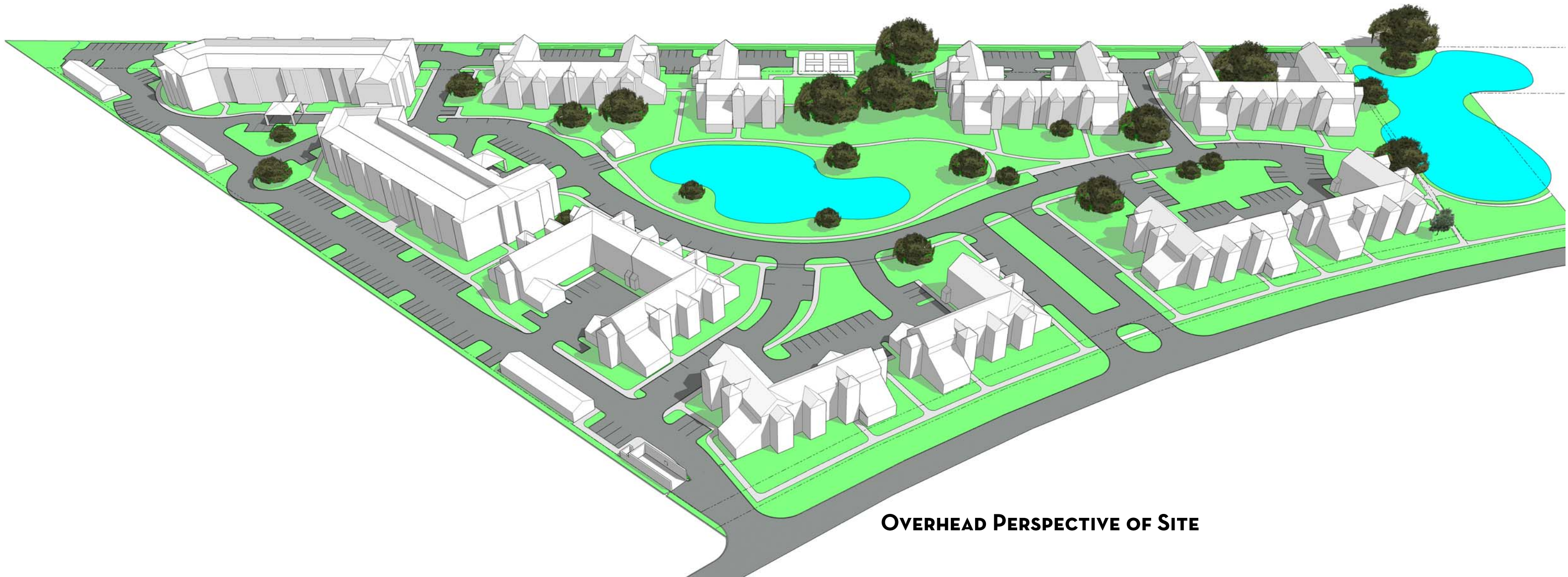
MAIN ENTRY  
ENGLISH TURN PARKWAY

SERVICE ENTRY



- PROJECT SITE PARAMETERS
- 28 EXISTING TREES TO BE SAVED
- BUILDING PLACEMENT
- VEHICULAR / PEDESTRIAN CIRCULATION
- LANDSCAPING INFILL / SITE AMENITIES

<b>SITE</b>	<b>BUILDINGS</b>	<b>APARTMENTS</b>	<b>PARKING</b>	<b>AMENITIES</b>
<b>16.87 ACRES</b>	<b>13 THREE STORY BUILDINGS</b> <b>2 FOUR STORY BUILDINGS</b> <b>3 FREE-STANDING 6-CAR GARAGES</b> <b>1 MAIL KIOSK</b> <b>1 COMPACTOR ENCLOSURE</b>	<b>276 TOTAL APARTMENT UNITS</b> <b>128 ONE BEDROOMS</b> <b>124 TWO BEDROOMS</b> <b>24 THREE BEDROOMS</b>	<b>414 PARKING SPACES</b> <b>(1.5 SPACES PER UNIT)</b>	<b>CENTRAL, COMMUNAL GREEN SPACE</b> <b>PLAYGROUND &amp; PICKLE BALL COURTS</b> <b>BARK PARK</b>



**OVERHEAD PERSPECTIVE OF SITE**

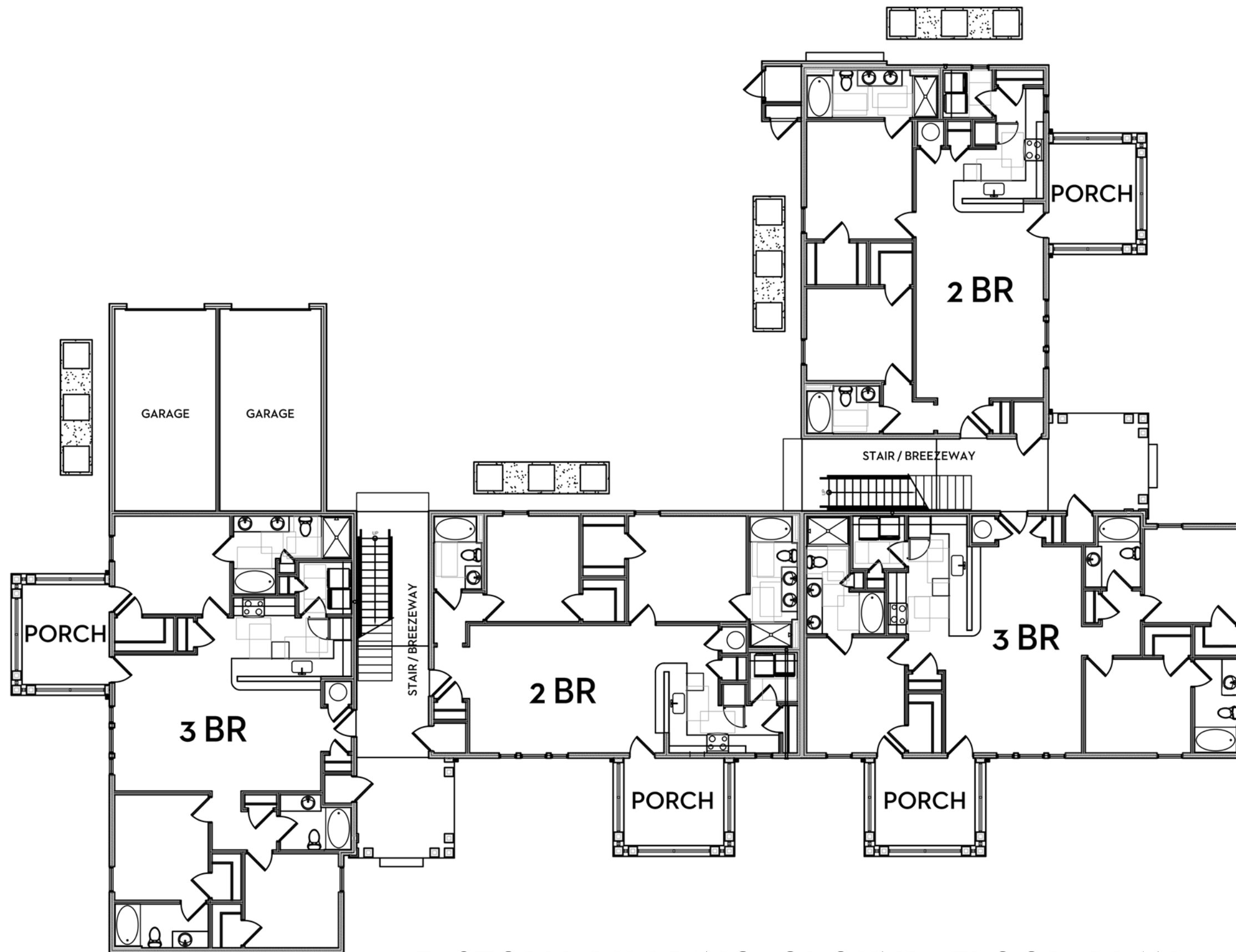




**PROPOSED RENDERING**

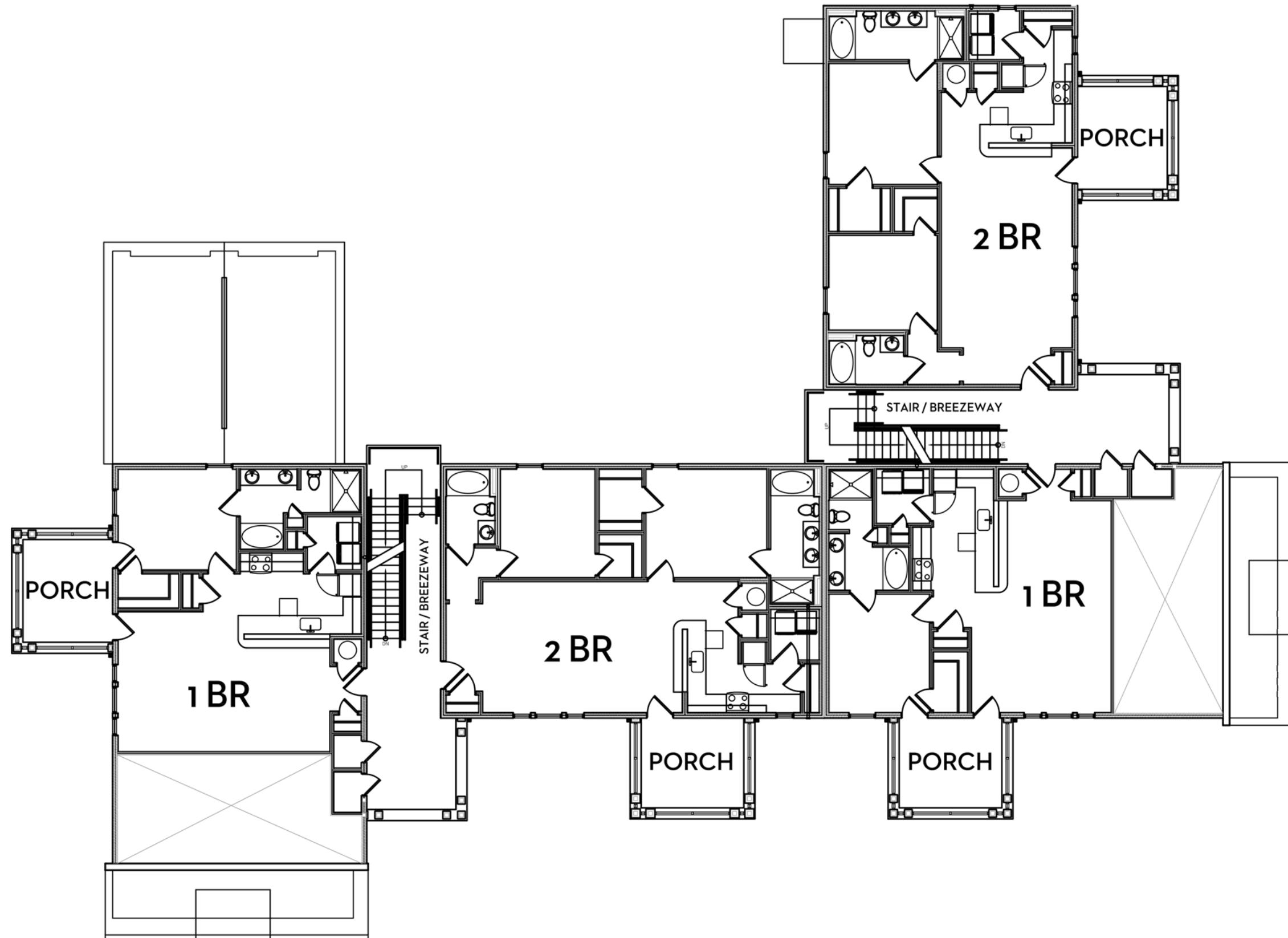


**EXTERIOR ELEVATION ALONG ENGLISH TURN PARKWAY**



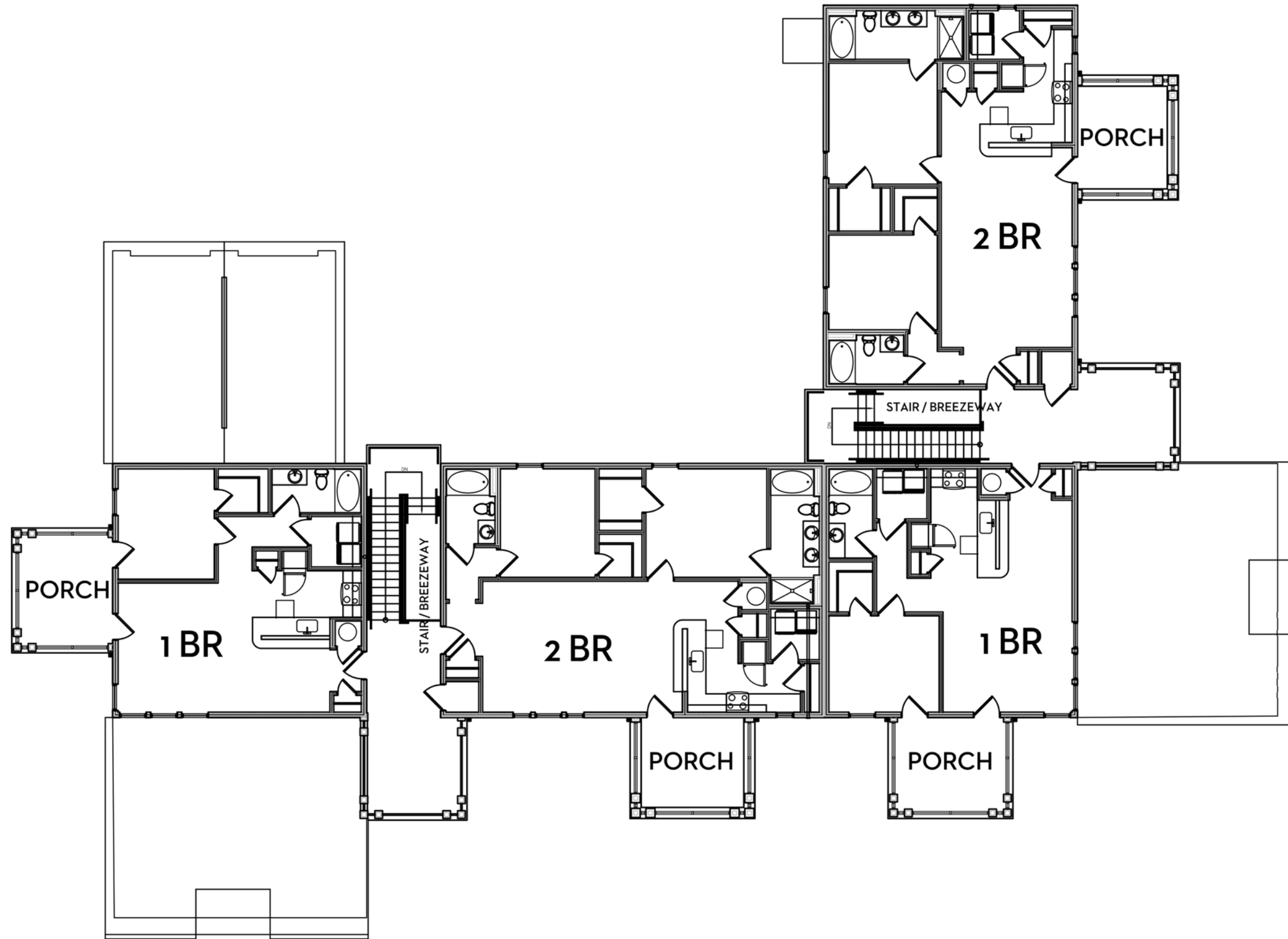
**3 STORY BUILDING GROUND FLOOR PLAN**

7,371 GSF



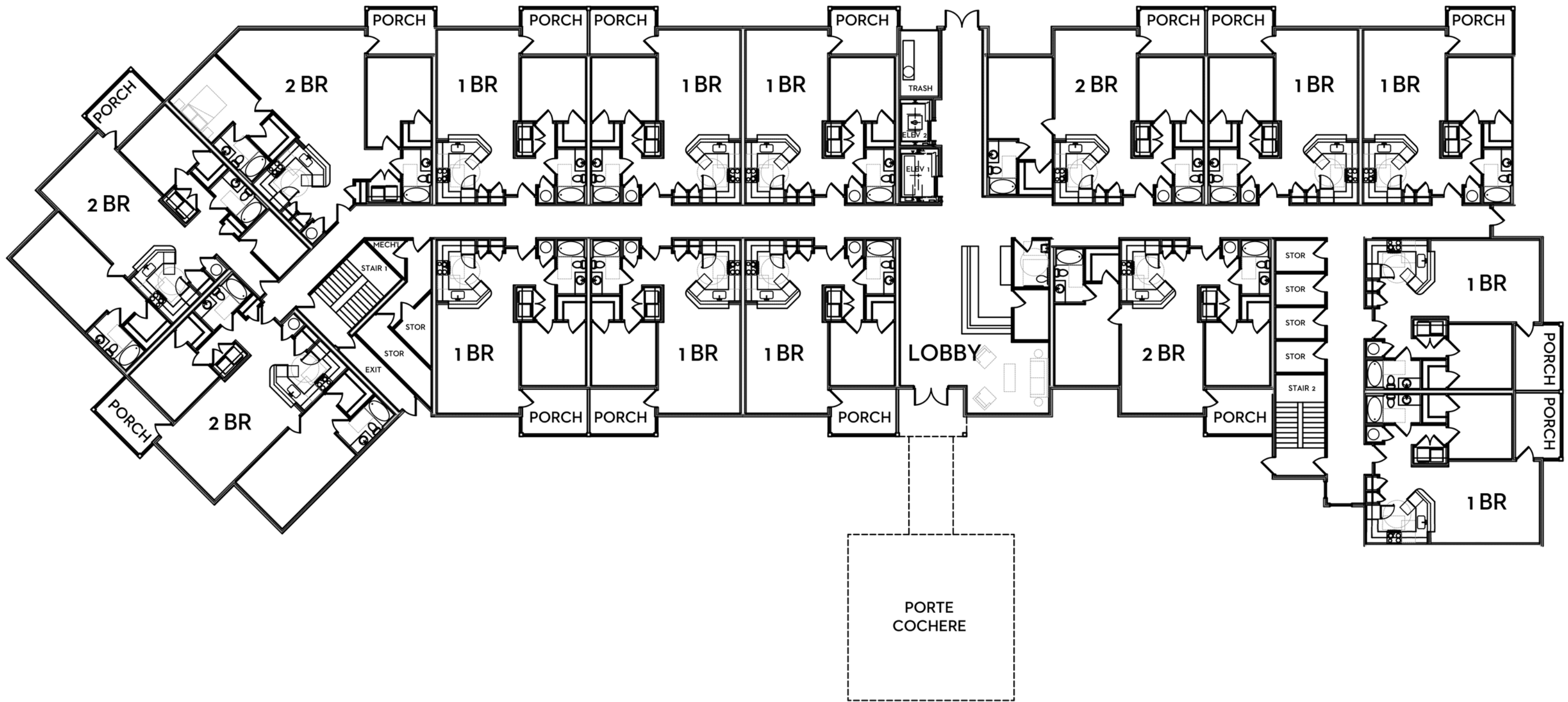
**3 STORY BUILDING SECOND FLOOR PLAN**

**5,814 GSF**



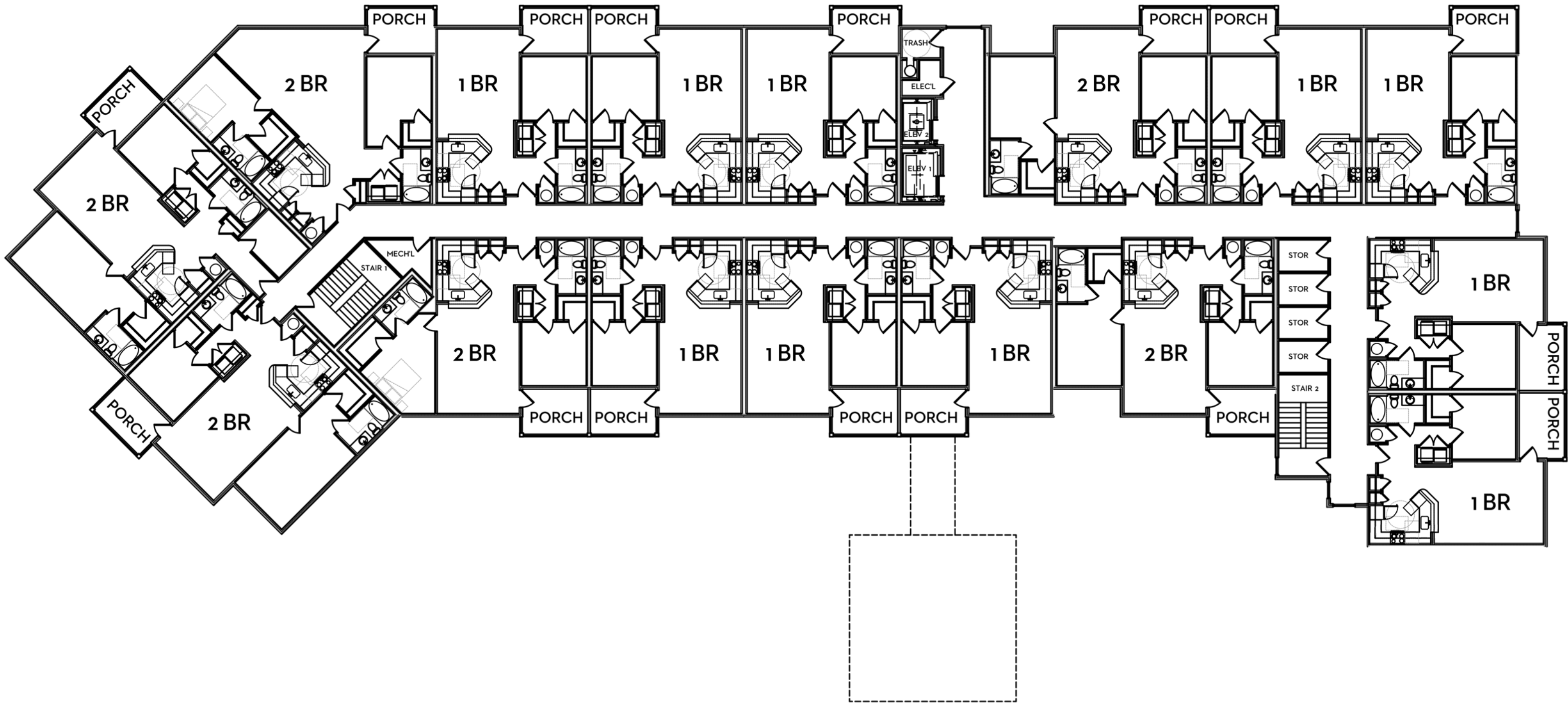
**3 STORY BUILDING THIRD FLOOR PLAN**

**5,297 GSF**



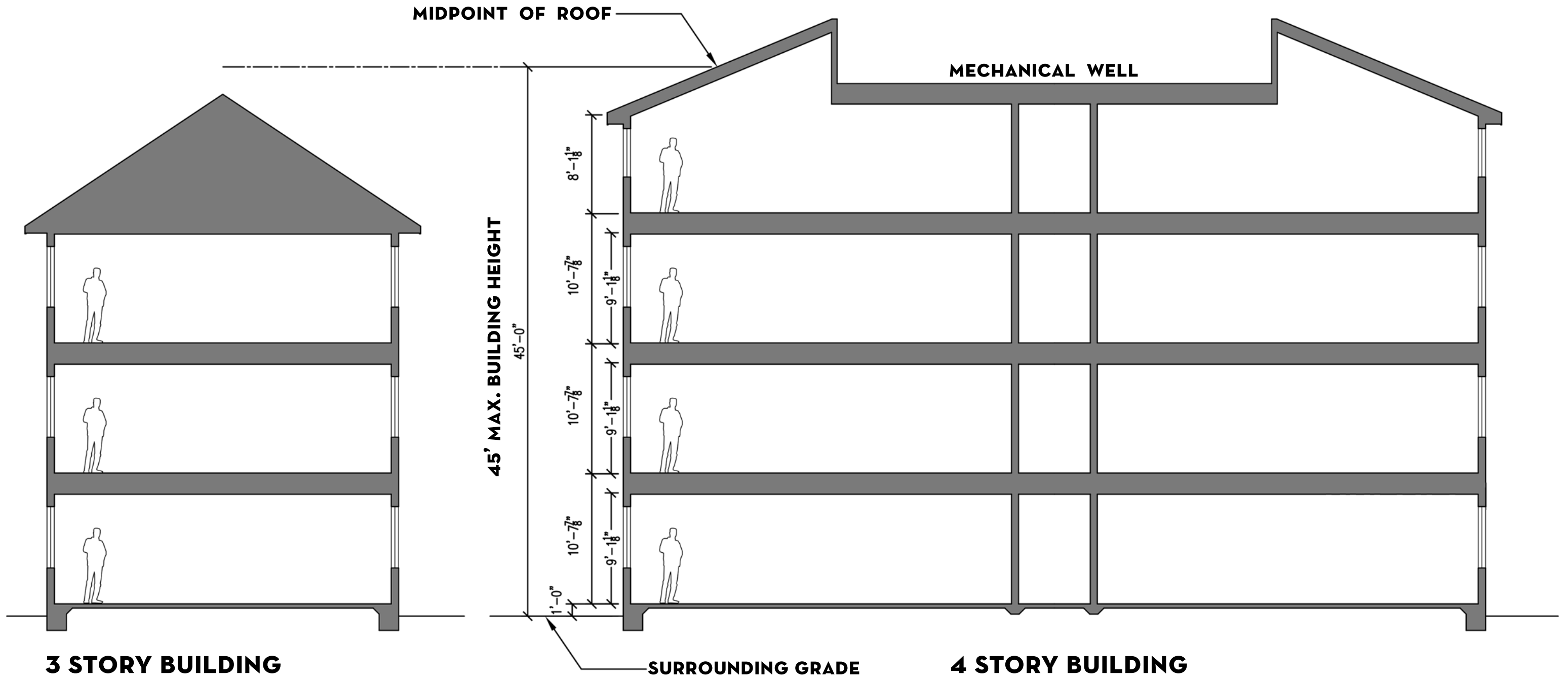
**4 STORY BUILDING GROUND FLOOR PLAN**

**20,294 GSF**



**4 STORY BUILDING UPPER FLOORS PLAN**

**20,294 GSF**



**TYPICAL BUILDING CROSS SECTIONS**