

PLANT SCHEDULE						
QTY	COMMON NAME	SCIENTIFIC NAME	SIZE	CAL	HEIGHT	REMARKS
9	LITTLE GEM MAGNOLIA	MAGNOLIA GRANDIFLORA 'LITTLE GEM'	B&B	2-2.5"	10-12'	TREE FORM
2	NUTTALL OAK	QUERCUS NUTTALLI	B&B	2-2.5"	10-12'	SINGLE LEADER
7	WILLOW OAK	QUERCUS PHELLOS	B&B	2-2.5"	10-12'	SINGLE LEADER
14	BALD CYPRESS	TAXODIUM DISTICHUM	B&B	2-2.5"	10-12'	SINGLE LEADER
12	SWEETBAY MAGNOLIA	MAGNOLIA VIRGINIANA	B&B	1-1.5"	10-12'	SINGLE LEADER
92	DWARF YAUPON	ILEX VOMITORIA 'NANA'	7 GAL			
37	DWARF PALMETTO	SABAL MINOR	7 GAL			
1405	LIRIOPE 'SUPER BLUE'	LIRIOPE MUSCARI 'SUPER BLUE'	4" pot			SOLID SOD
	ST AUGUSTINE SOD	STENOTAPHRUM SECONDATUM	PALLET			

IRRIGATION NOTE

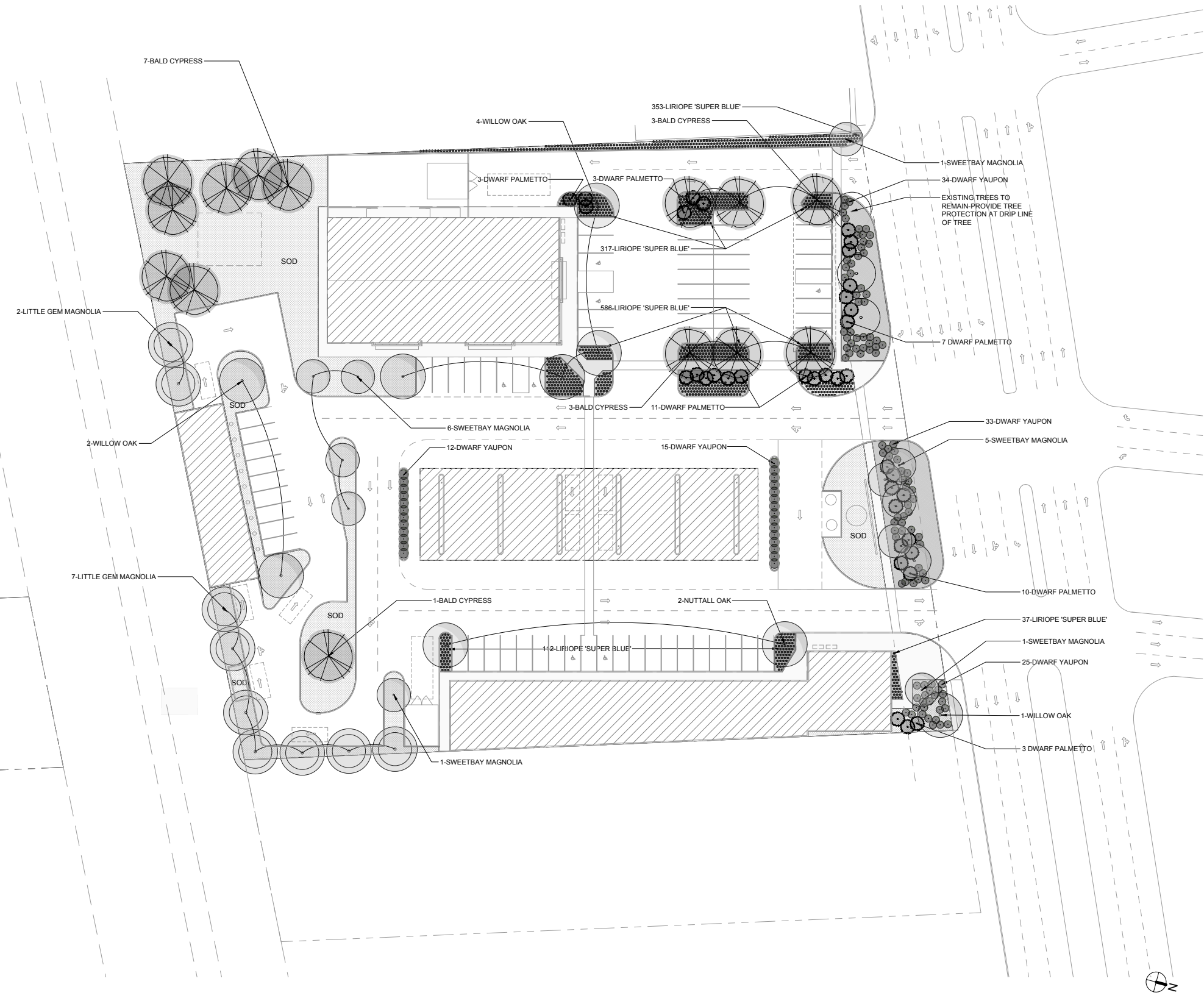
ALL LANDSCAPED AREAS TO BE IRRIGATED WITH 100% COVERAGE. THE GENERAL CONTRACTOR SHALL SUB OUT IRRIGATION CONTRACTOR FOR DESIGN AND SUBMIT TO THE CITY PRIOR TO ANY WORK BEING DONE.

LANDSCAPE NOTES

- ALL LANDSCAPE INSTALLATION TO MEET EAST BATON ROUGE PARISH SPECIFICATIONS AND DETAILS.
- REFER TO SPECIFICATION SECTION 329113-EXTERIOR PLANTS REGARDING LANDSCAPING REQUIREMENTS.
- LANDSCAPE CONTRACTOR SHALL BE RESPONSIBLE FOR KNOWLEDGE OF EXISTING AND PROPOSED UTILITIES BASED ON THE PLANS PROVIDED. UTILITY LOCATIONS SHALL BE VERIFIED BY THE OWNER AND GENERAL CONTRACTOR. THE LANDSCAPE CONTRACTOR SHALL BE RESPONSIBLE FOR ANY UTILITIES DAMAGED AND SHALL RESULT IN NO ADDITIONAL EXPENSE TO THE OWNER. TREE AND PLANT LOCATION SHALL BE ADJUSTED TO AVOID CONFLICT WITH ANY UTILITY.
- ALL LAYOUT WORK SHALL BE APPROVED BY LANDSCAPE ARCHITECT.
- LANDSCAPE CONTRACTOR SHALL TAKE RESPONSIBILITY AND NECESSARY PRECAUTIONS TO PROTECT ANY EXISTING BUILDING OR STRUCTURES ON SITE AND SHALL MAKE NECESSARY REPAIRS IF ANYTHING IS DAMAGED.
- LANDSCAPE CONTRACTOR TO MAINTAIN DAILY CLEAN UP OF SITE AT THE END OF EACH DAY AND UNTIL PROJECT COMPLETION.
- ALL PLANT MATERIALS TO CONFORM TO THE AMERICAN ASSOCIATION OF NURSERYMEN.
- ALL PLANT MATERIAL SHALL BE SUBJECT TO APPROVAL BY ARCHITECT OR LANDSCAPE ARCHITECT.
- TREE PLANTING AREAS TO BE BACKFILLED WITH A SPECIFIED SOIL MIX-REFER TO SPECIFICATION 329113-EXTERIOR PLANTS.
- AFTER PLANTING, PRUNE ONLY CROSSOVER LIMBS, CO-DOMINATE LEADERS, BROKEN OR DEAD BRANCHES. TRIM LIMBS TO A HEIGHT SO THE CLEAR SPACE IS 6' FROM THE GROUND.
- WATER THOROUGHLY WHILE BACKFILLING TO ELIMINATE AIR POCKETS. RE-WATER AFTER PLANTING.
- REMOVE ALL STRING, TWINE AND TAGS FROM TRUNK AND BRANCHES.
- PENETRATE SUBSOIL BUT DO NOT PENETRATE ROOT BALL WITH STAKES.
- SOIL BACKFILL-TAMP SOIL AROUND BASE FIRMLY WITH FOOT PRESSURE SO THAT THE ROOT BALL DOES NOT SHIFT. TRUNK FLARE SHOULD BE VISIBLE. DO NOT PILE SOIL ON TOP OF ROOT BALL.
- SET TOP OF ROOT BALL 1"-2" HIGHER THAN TOP OF EXISTING GRADE.
- LANDSCAPE CONTRACTOR SHALL STAKE/SUPPORT ALL PLANT MATERIALS AND CORRECT ANY MATERIALS THAT HAVE BEEN UNSEATED OR LEANING FROM WIND DURING THE WARRANTY PERIOD.
- ALL BEDS AND PLANTING AREAS TO BE MULCHED WITH 3-4" OF CRUSHED PINE NEEDLE MULCH.
- LANDSCAPE CONTRACTOR SHALL WARRANTY ALL TREES FOR 1 (ONE) YEAR FROM THE DATE OF SUBSTANTIAL COMPLETION. THE WARRANTY CONSISTS OF REPLACEMENT TREE INSTALLATION AT NO CHARGE TO THE OWNER. WARRANTY DOES NOT INCLUDE ANY EQUIPMENT RENTAL THAT MAY BE NECESSARY FOR INSTALLATION DEPENDING ON TREE SIZE SPECIFIED.
- CONTRACTOR SHALL SUPPLY THE LANDSCAPE ARCHITECT WITH PICTURES OF ALL SPECIFIED PLANT MATERIAL IN ADDITION TO ALL OTHER PLANT MATERIAL.
- REQUIRED ELEVATIONS IN GREENSPACE AREAS DEPICT THE ELEVATION OF THE TOP OF SOD. ALLOWANCE FOR THICKNESS OF TOPSOIL, SOD, ETC. IS TO BE MADE TO ENSURE THAT THE REQUIRED ELEVATIONS ARE PROVIDED.

NOTE:
THIS PLAN WAS PREPARED BY REFERENCING A NUMBER OF PRIVATE AND PUBLICLY-AVAILABLE MODIFICATIONS MAY BE REQUIRED AFTER COMPLETE INFORMATION IS AVAILABLE.

1 LANDSCAPE SITE PLAN
1" = 30'-0"



CHRISTOPHER E. JOHNSON
ARCHITECT LLC
WWW.CEARCHITECT.COM
504.231.1715



EVANS + LIGHTER
landscape architecture
www.evanslighter.com
lighter@evanslighter.com
504.722.2941

INFINITY FUELS
8400 CHEF MENTEUR HIGHWAY
NEW ORLEANS, LOUISIANA

DATE	ISSUED FOR
04-29-2022	PRELIM. DESIGN

THESE PLANS HAVE BEEN PREPARED UNDER MY DIRECT SUPERVISION AND TO THE BEST OF MY KNOWLEDGE COMPLY WITH THE INTERNATIONAL BUILDING CODE. I WILL OBSERVE THE WORK.



PROJECT NO.	INF321
DRAWN BY	b. lighter
CHECKED BY	b. lighter
DRAWING TITLE	LANDSCAPE PLAN

LANDSCAPE PLAN
SHEET NO. L-1