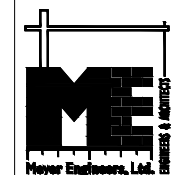


project no. 20-2193
 drawn EMC
 checked
 date 12-22-2021
 revised



Meyer Engineers, Ltd.
 4937 Hearst Street, Suite 1B, Metairie, Louisiana 70001
 phone: 504.885.9892 · fax: 504-887-5056
 website: www.meyer-e-l.com



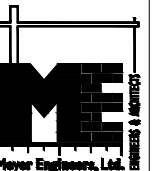
SITE PLAN
LAFITTE GREENWAY BRIDGE
ON NORTH GAYOSO STREET
NFT GROUP, LLC - OWNER

sheet no.
1
 of _____ sheets

project no. 20-2193
 drawn EMC
 checked
 date 12-22-2021
 revised

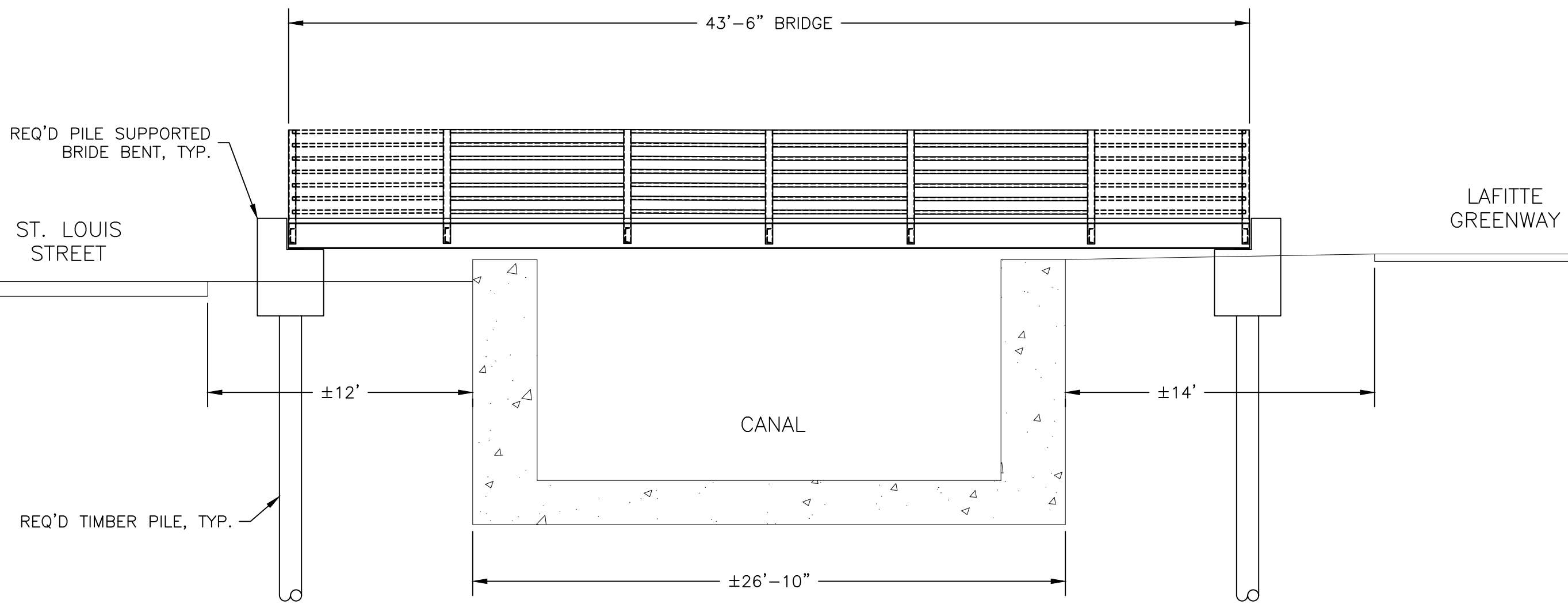


Meyer Engineers, Ltd.
 4937 Hearst Street, Suite 1B, Metairie, Louisiana 70001
 phone: 504.885.9892 . fax: 504-887-5056
 website: www.meyer-e-l.com



BRIDGE ELEVATION
LAFITTE GREENWAY BRIDGE
ON NORTH GAYOSO STREET
NFT GROUP, LLC - OWNER

sheet no.
2
 of sheets

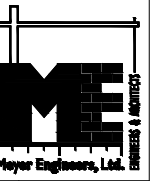


1
 1 | 2
BRIDGE ELEVATION
 1" = 5'

project no. 20-2193
 drawn EMC
 checked _____
 date 12-22-2021
 revised _____

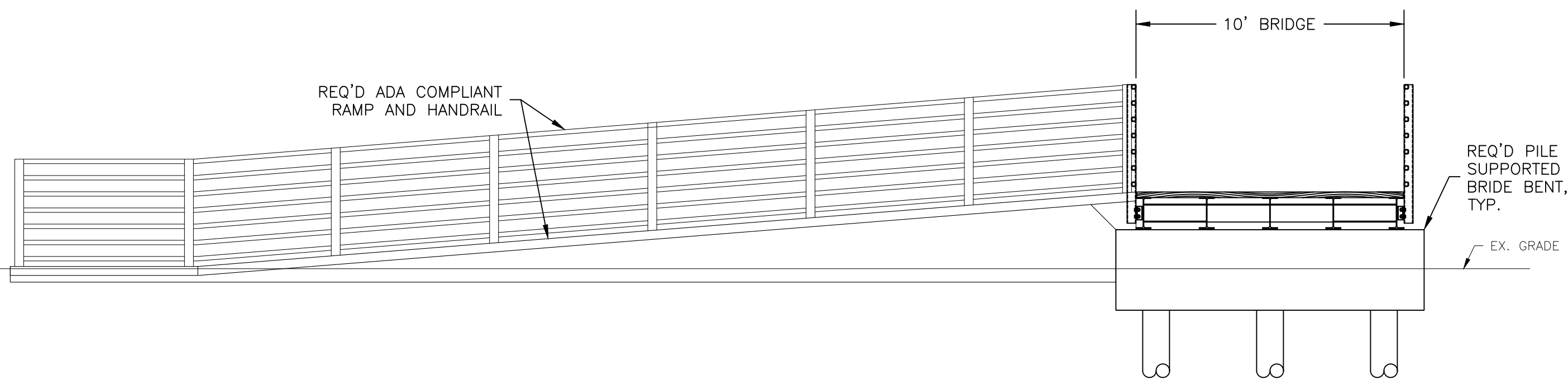


Meyer Engineers, Ltd.
 4937 Hearst Street, Suite 1B, Metairie, Louisiana 70001
 phone: 504.885.9892 . fax: 504-887-5056
 website: www.meyer-e-l.com

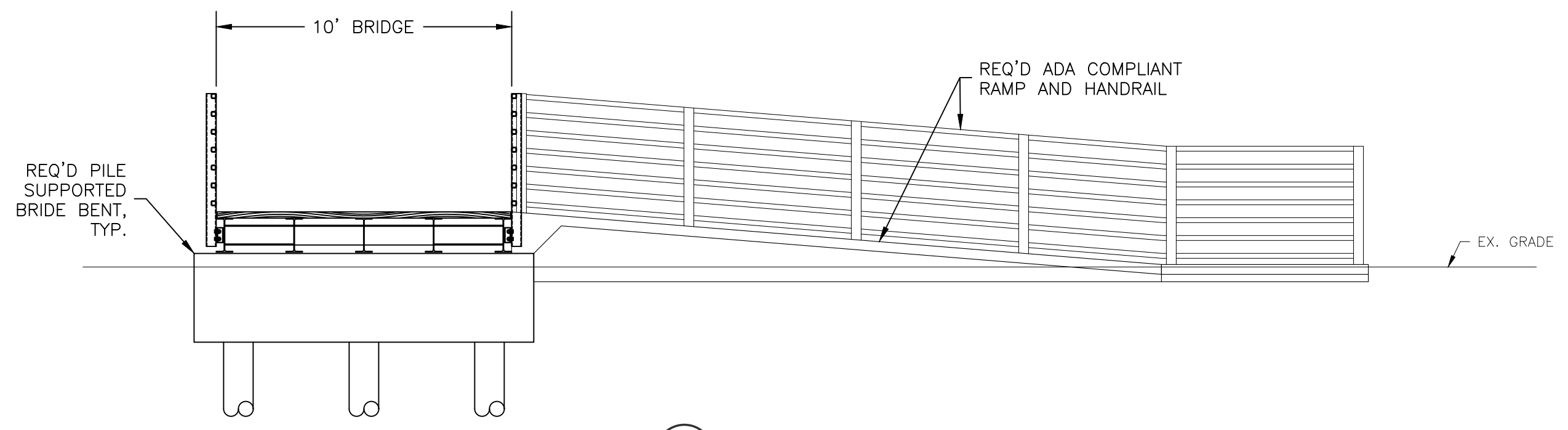


RAMP ELEVATIONS
LAFITTE GREENWAY BRIDGE
ON NORTH GAYOSO STREET
NFT GROUP, LLC - OWNER

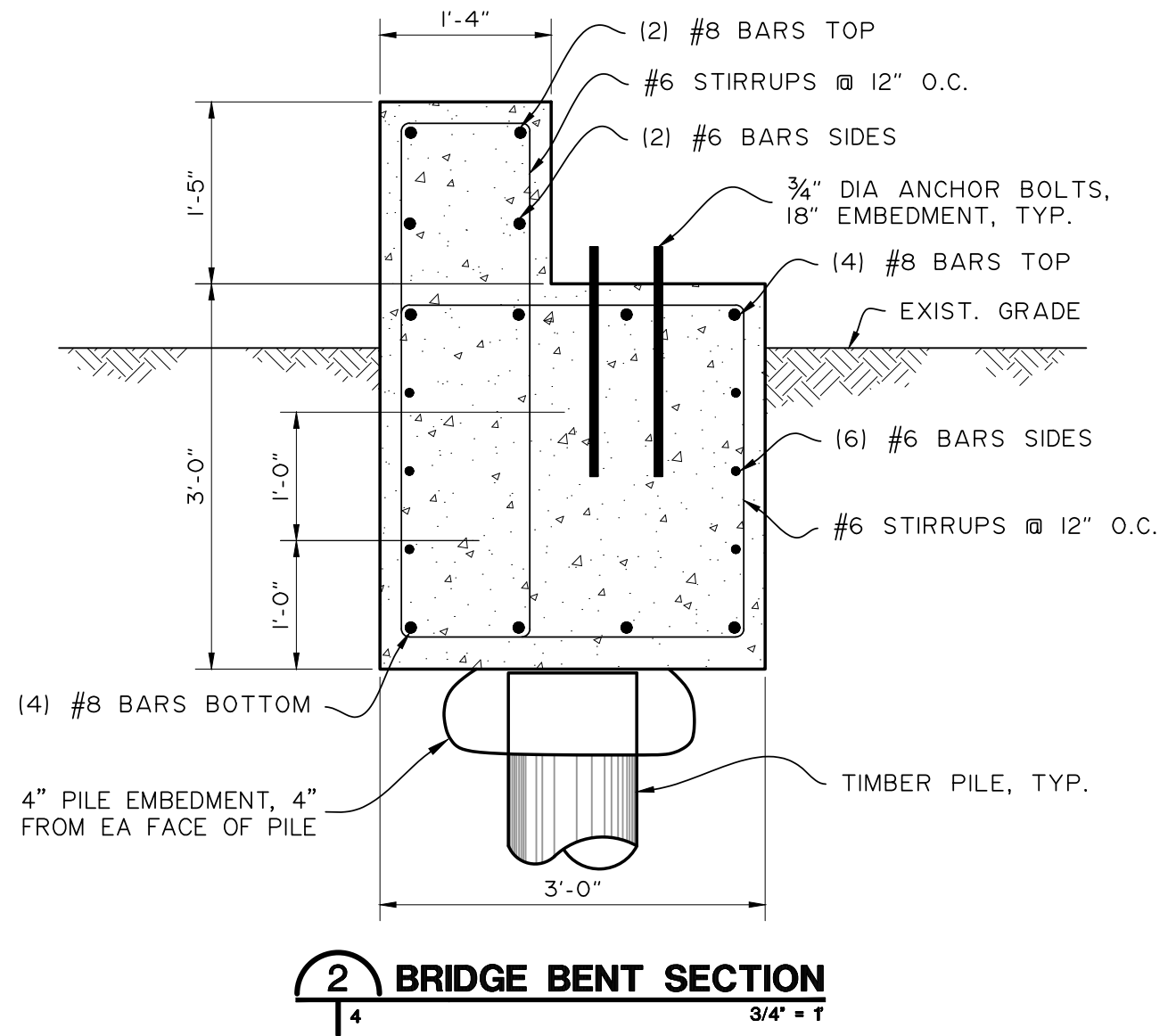
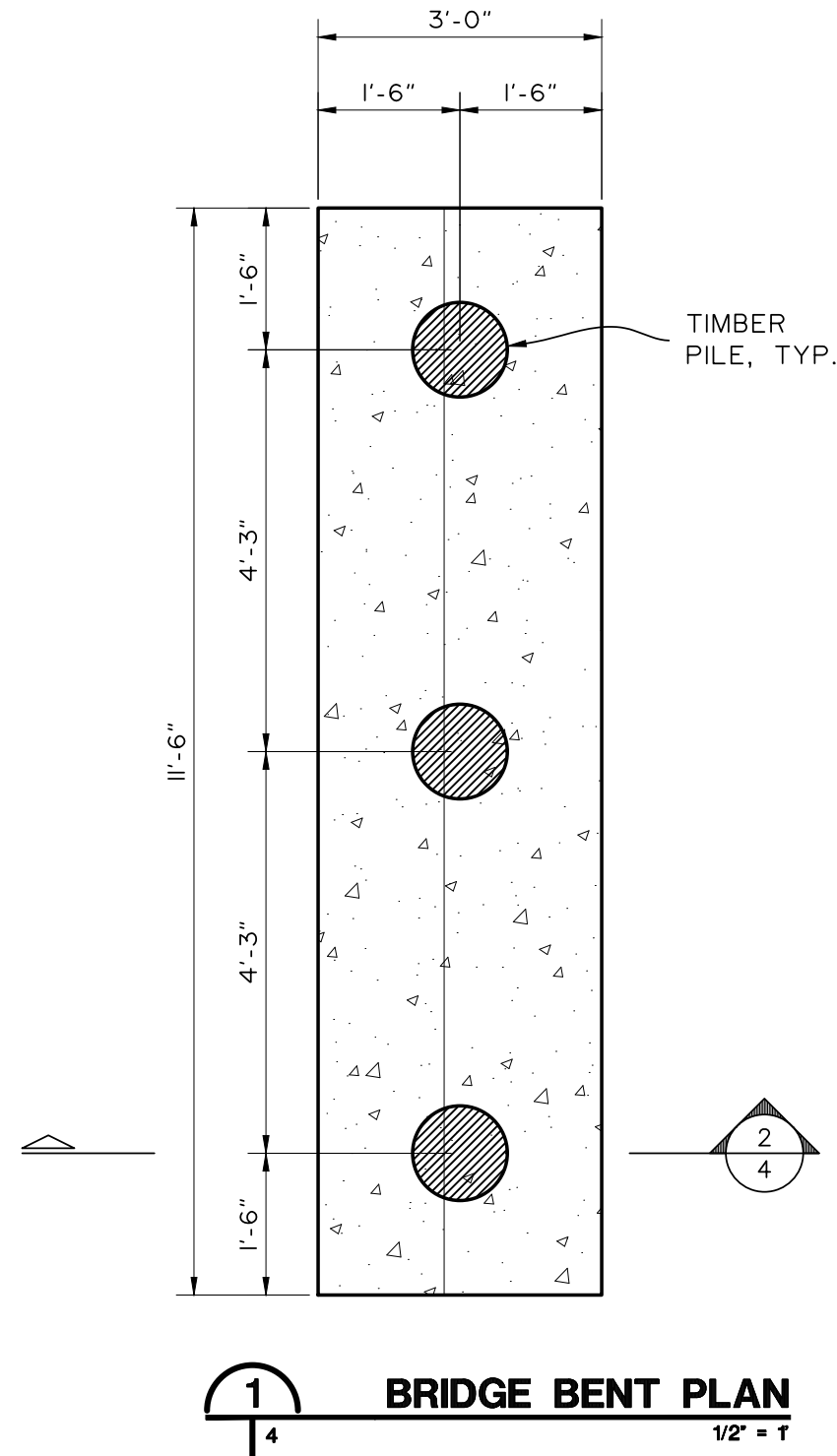
sheet no.
3
 of _____ sheets



1
 1 | 3 **SOUTH RAMP ELEVATION** 1" = 4'



2
 1 | 3 **NORTH RAMP ELEVATION** 1" = 4'



GENERAL FOUNDATION NOTES:

1. CONCRETE COMPRESSIVE STRENGTH SHALL BE 4,000 PSI.
2. ALL REINFORCING STEEL FOR CONCRETE SHALL BE GRADE 60.
3. PILING SHALL BE CLASS "B" TREATED TIMBER PILES W/ MIN. BUTT DIAMETER OF 12" AND A MIN. TIP DIAMETER OF 7".

PILE CAPACITY
10.5 TON COMPRESSION
7.0 TON TENSION

PILE LENGTH
35' LONG
ALL PILE TIPS SHALL BE AT THE SAME ELEVATION.
CONTRACTOR TO DETERMINE PILE CUTOFF AS NEEDED.

project no. 20-2193
drawn BMC
checked
date 12-22-2021
revised



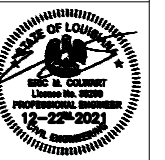
Meyer Engineers, Ltd.
4937 Hearst Street, Suite 1B, Metairie, Louisiana 70001
phone: 504.885.9892, fax: 504-887-5056
website: www.meyer-e-l.com



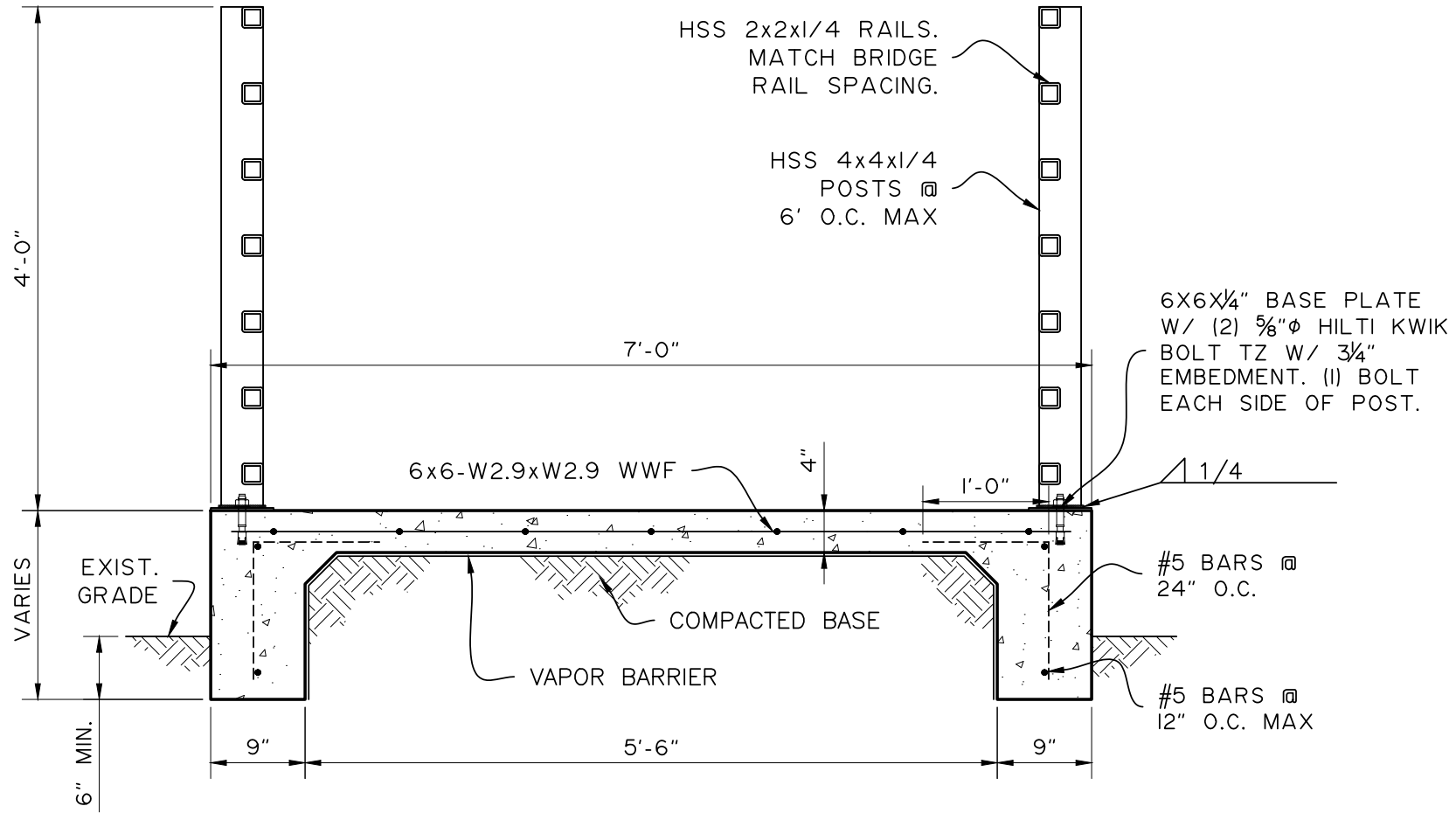
BRIDGE FOUNDATION DETAILS
LAFITTE GREENWAY BRIDGE
ON NORTH GAYOSO STREET
NFT GROUP, LLC - OWNER

sheet no.
4
of sheets

project no. 20-2193
 drawn EMC
 checked
 date 12-22-2021
 revised



Meyer Engineers, Ltd.
 4937 Hearst Street, Suite 1B, Metairie, Louisiana 70001
 phone: 504.885.9892 · fax: 504-887-5056
 website: www.meyer-e-l.com

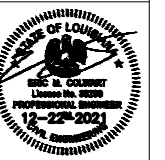


1
TYPICAL RAMP SECTION
 3/4" = 1'

RAMP DETAILS
LAFITTE GREENWAY BRIDGE
ON NORTH GAYOSO STREET
NFT GROUP, LLC - OWNER

sheet no.
5
 of sheets

project no. 20-2193
 drawn EMC
 checked
 date 12-22-2021
 revised

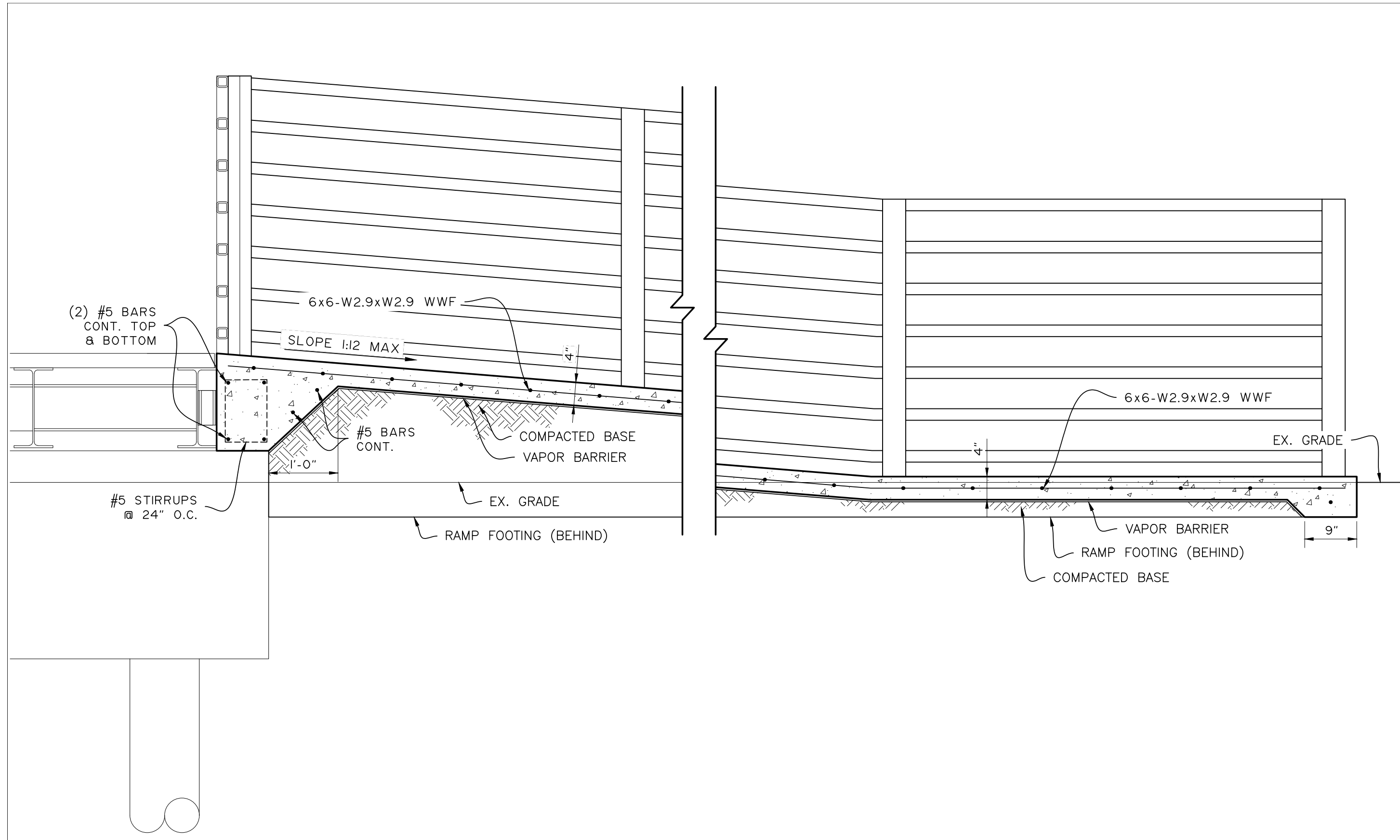


Meyer Engineers, Ltd.
 4937 Hearst Street, Suite 1B, Metairie, Louisiana 70001
 phone: 504.885.9892 . fax: 504-887-5056
 website: www.meyer-e-l.com



RAMP DETAILS
LAFITTE GREENWAY BRIDGE
ON NORTH GAYOSO STREET
NFT GROUP, LLC - OWNER

sheet no.
6
 of sheets



1
TYPICAL RAMP SECTION
 3/4" = 1'

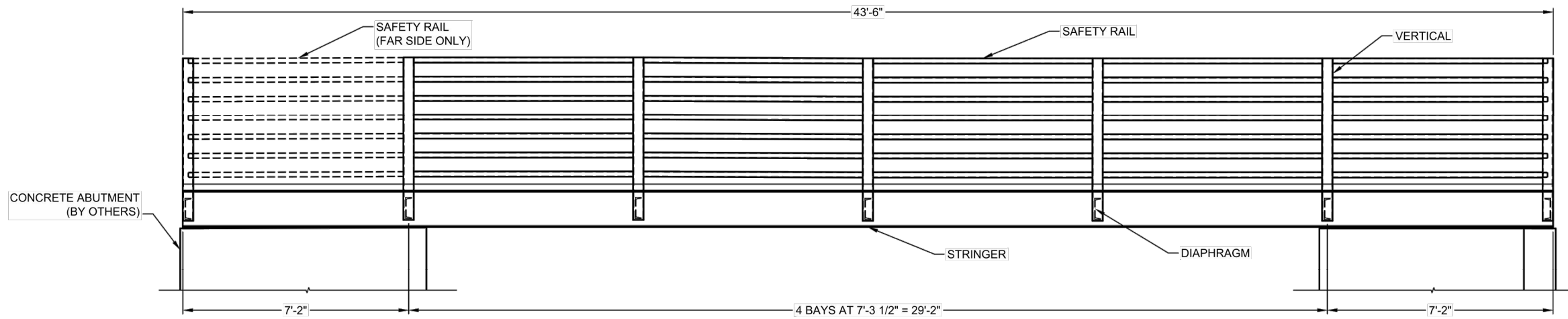
project no. 20-2193
 drawn EMC
 checked
 date 12-22-2021
 revised

Meyer Engineers, Ltd.
 4937 Hearst Street, Suite 1B, Metairie, Louisiana 70001
 phone: 504.885.9892 . fax: 504-887-5056
 website: www.meyer-e-l.com

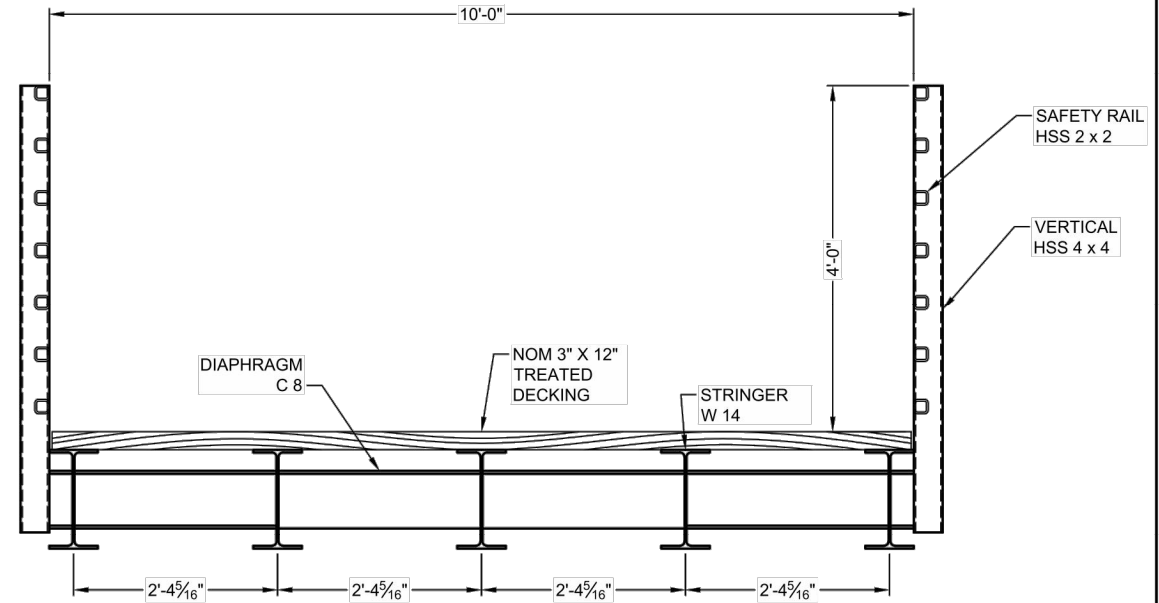


BRIDGE PLANS
LAFITTE GREENWAY BRIDGE
ON NORTH GAYOSO STREET
NFT GROUP, LLC - OWNER

sheet no.
7
 of sheets



ELEVATION



SECTION

GENERAL NOTES

- DESIGN PROCEDURE IS IN ACCORDANCE WITH "GUIDE SPECIFICATIONS FOR DESIGN OF PEDESTRIAN BRIDGES", 2009 (INCLUDING 2015 INTERIM REVISIONS) & "LRFD BRIDGE DESIGN SPECIFICATIONS", 2017 (8TH EDITION) BY THE AMERICAN ASSOCIATION OF STATE HIGHWAY AND TRANSPORTATION OFFICIALS (AASHTO).
- MATERIALS (UNLESS NOTED OTHERWISE):
 - STRUCTURAL STEEL:
 - HSS SECTIONS: ASTM A500 GRADE C OR A847
 - SHAPES: ASTM A992 OR A588
 - PLATES: ASTM A572 GRADE 50, A588
 - ROLL FORM: A606 WEATHERING STEEL
 - WOOD DECK: SELECT STRUCTURAL DOUGLAS FIR. TIMBER DECK MATERIAL SHALL BE TREATED TO MEET AWPA U1 UC4A GROUND CONTACT. ACCEPTABLE TREATMENTS ARE COPPER AZOLE TYPE C (CA-C) TO A 0.15 PCF RETENTION OR TO REFUSAL OR EQUAL.
- BRIDGE DESIGN IS BASED ON LOAD COMBINATIONS IN ACCORDANCE WITH AASHTO OF THE FOLLOWING LOADS
 - BRIDGE DEAD LOAD.
 - UNIFORM PEDESTRIAN LIVE LOAD OF 90 PSF.
 - VEHICLE LIVE LOAD: H5 TRUCK (10,000 LBS).
 - WIND LOADING PER LRFD SPECIFICATIONS FOR STRUCTURAL SUPPORTS FOR HIGHWAY SIGNS, LUMINAIRES, AND TRAFFIC SIGNALS, 1ST EDITION, 2015 SECTION 3.8.
 - DESIGN WIND SPEED: 115 MPH
 - SERVICE WIND SPEED: 76 MPH
 - EXPOSURE CATEGORY: C
- BRIDGE TO BE BUILT TO THE REQUIREMENTS OF AWS D1.1.
- ALL SHOP WELDING SHALL USE THE GAS METAL ARC WELDING OR FLUX CORED ARC WELDING PROCESS.
- CLEANING: ALL SURFACES OF STEEL SHALL BE CLEANED IN ACCORDANCE WITH STEEL STRUCTURES PAINTING COUNCIL SURFACES PREPARATION SPECIFICATIONS NO. 6 COMMERCIAL BLAST CLEANING. SSPC-SP6-LATEST EDITION.
- PAINTING: SHERWIN WILLIAMS 2 COAT PAINT SYSTEM:
 - ONE INTERMEDIATE COAT MACROPOXY 646 FAST CURE EPOXY 5-10 MILS DFT. (CLASS A FAYING SURFACE).
 - ONE TOP COAT ACROLON 218 HS ACRYLIC POLYURETHANE SEMI-GLOSS 3-6 MILS DFT. COLOR TO BE DETERMINED BY OWNER.
 - BRIDGE SHALL BE PROVIDED WITH TOUCH-UP PAINT FOR AFTER ERECTION. TOUCH-UP PAINTING INCLUDES ANY AND ALL PAINTING REQUIRED AFTER THE STRUCTURE REACHES THE SITE AND IS THE RESPONSIBILITY OF THE ERECTOR. THIS PAINTING SHALL INCLUDE, BUT MAY NOT BE LIMITED TO THE FOLLOWING AREAS.
 - ANY AREAS DAMAGED DUE TO SHIPPING, HANDLING AND ERECTION OF THE BRIDGE.
 - BOLT HEADS AND EXPOSED AREAS OF BOLTS AND NUTS AS APPLICABLE.
 - IF APPLICABLE, SMALL AREAS (0"-2" EACH SIDE) AROUND BOLTED FIELD SPLICES, DESIGNED AS "SLIP CRITICAL" WHERE ONE OR ALL PAINT COATS MAY BE REQUIRED TO BE LEFT OFF THE FAYING SURFACES OF THESE CONNECTIONS.
- MAINTENANCE NOTE: CONTECH ENGINEERED SOLUTIONS RECOMMENDS NOT APPLYING DE-ICEING OR DUST PROHIBITIVE CHEMICALS OR SALTS TO ANY PART OF THE BRIDGE STRUCTURE. IF DE-ICING OR DUST PROHIBITIVE CHEMICALS OR SALTS ARE APPLIED TO ANY PART OF THE BRIDGE STRUCTURE, CONTECH ENGINEERED SOLUTIONS WILL NOT BE RESPONSIBLE FOR ANY RESULTANT ACCELERATED CORROSION.
- SHOP SPLICES:
 - ALL TOP AND BOTTOM CHORD SHOP SPLICES TO BE COMPLETE PENETRATION TYPE WELDS.
 - ALL HORIZONTAL RAIL COMPONENT SPLICES TO BE LOCATED AT THE CENTERLINE OF VERTICALS, EACH END WELDED TO THE VERTICAL AND SEAL WELDED TOGETHER. SEAL WELDS TO BE GROUND SMOOTH AND VISUAL INSPECTION ONLY REQUIRED.
 - ALL STRINGER SPLICES TO BE LOCATED OVER THE CENTERLINE OF FLOOR BEAMS, EACH END WELDED TO THE FLOOR BEAM AND SEAL WELDED TOGETHER.

The design and information shown on this drawing is provided as a service to the project owner, engineer and contractor by Contech Engineered Solutions LLC ("Contech"). Neither this drawing, nor any part thereof, may be used, reproduced or modified in any manner without the prior written consent of Contech. Failure to comply is done at the user's own risk and Contech expressly disclaims any liability or responsibility for such use.

If discrepancies between the supplied information upon which the drawing is based and actual field conditions are encountered as site work progresses, these discrepancies must be reported to Contech immediately for re-evaluation of the design. Contech accepts no liability for designs based on missing, incomplete or inaccurate information supplied by others.

MARK	DATE	REVISION DESCRIPTION	BY
B	12/8/2021	REVISED LENGTH AND WALKOUT	CMA
A	11/16/2021	REVISED WALKOUT LOCATIONS	CMA

CONTECH
 ENGINEERED SOLUTIONS LLC
 www.ContechES.com
 8301 State Highway 29 North, Alexandria, MN 56308
 800-328-2047 320-345-9126 320-566-3148 FAX

CONTINENTAL
 BRIDGE

CONTECH
 PROPOSAL
 DRAWING

43'-6" x 10'-0"
 GAYOSO STREET
 PEDESTRIAN BRIDGE
 NEW ORLEANS, LA

PROJECT No.: 690558	SEQ. No.: 10	DATE: 11/10/2021
DESIGNED:	DRAWN: CMA	
CHECKED:	APPROVED:	
SHEET NO.: 1	OF 2	



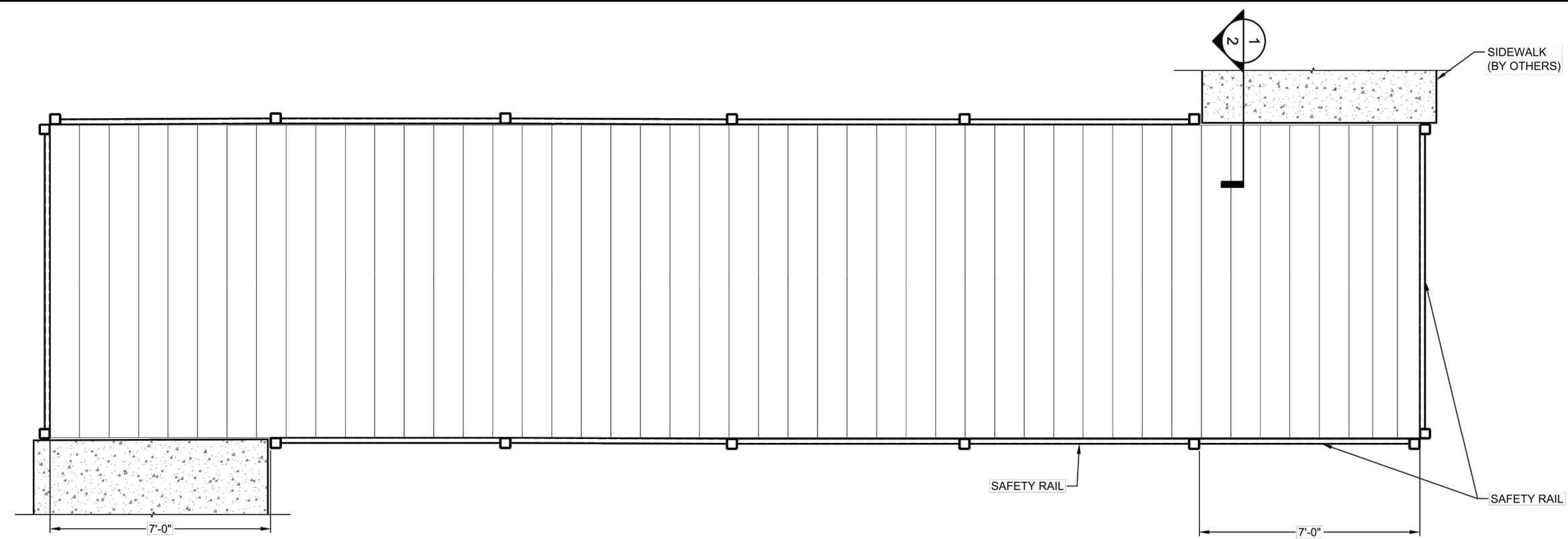
project no. 20-2193
 drawn EMC
 checked _____
 date 12-22-2021
 revised _____

Meyer Engineers, Ltd.
 4937 Hearst Street, Suite 1B, Metairie, Louisiana 70001
 phone: 504.885.9892 . fax: 504-887-5056
 website: www.meyer-e-l.com

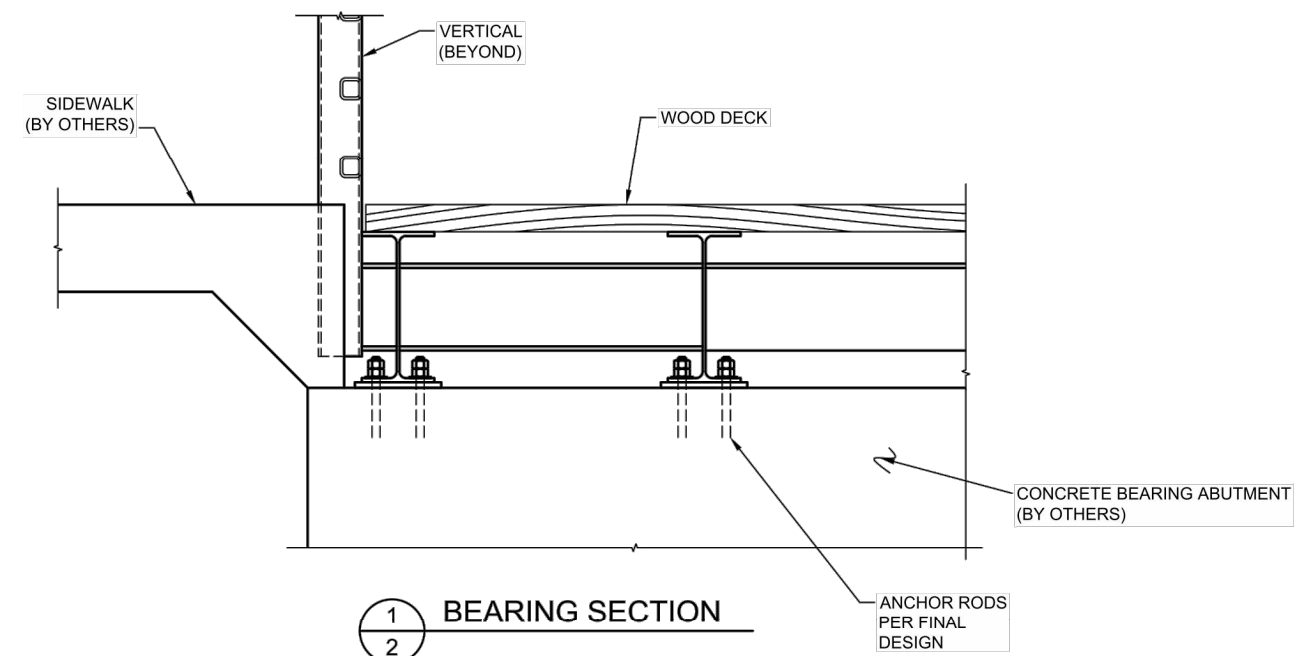


BRIDGE PLANS
LAFITTE GREENWAY BRIDGE
ON NORTH GAYOSO STREET
NFT GROUP, LLC - OWNER

sheet no.
08
 of _____ sheets



SAFETY RAIL/DECK PLAN VIEW



BEARING SECTION

The design and information shown on this drawing is provided as a service to the project owner, engineer and contractor by Contech Engineered Solutions LLC ("Contech"). Neither this drawing, nor any part thereof, may be used, reproduced or modified in any manner without the prior written consent of Contech. Failure to comply is done at the user's own risk and Contech expressly disclaims any liability or responsibility for such use.

If discrepancies between the supplied information upon which the drawing is based and actual field conditions are encountered as site work progresses, these discrepancies must be reported to Contech immediately for re-evaluation of the design. Contech accepts no liability for designs based on missing, incomplete or inaccurate information supplied by others.

MARK	DATE	REVISION DESCRIPTION	BY
B	12/8/2021	REVISED LENGTH AND WALKOUT	CMA
A	11/16/2021	REVISED WALKOUT LOCATIONS	CMA

CONTECH
 ENGINEERED SOLUTIONS LLC
 www.ContechES.com
 8301 State Highway 29 North, Alexandria, MN 56308
 800-328-2047 320-345-9126 320-566-3148 FAX

CONTINENTAL
 BRIDGE
 CONTECH
PROPOSAL
 DRAWING

43'-6" x 10'-0"
 GAYOSO STREET
 PEDESTRIAN BRIDGE
 NEW ORLEANS, LA



PROJECT No.: 690558	SEQ. No.: 10	DATE: 11/10/2021
DESIGNED:	DRAWN: CMA	
CHECKED:	APPROVED:	
SHEET NO.: 2	OF	2