



FRAMEWORK



VIRGIN HOTEL



SECOND LINE STAGES



THE JULIAN APARTMENTS



SOUTH MARKET



CONVENTION CENTER BLVD



Lower Garden District - Commercial Architecture Context

New Orleans, LA | Exterior Design | August 11th, 2023





WALMART



WAFFLE HOUSE



WHOLE FOODS (WEST RIVERSIDE)



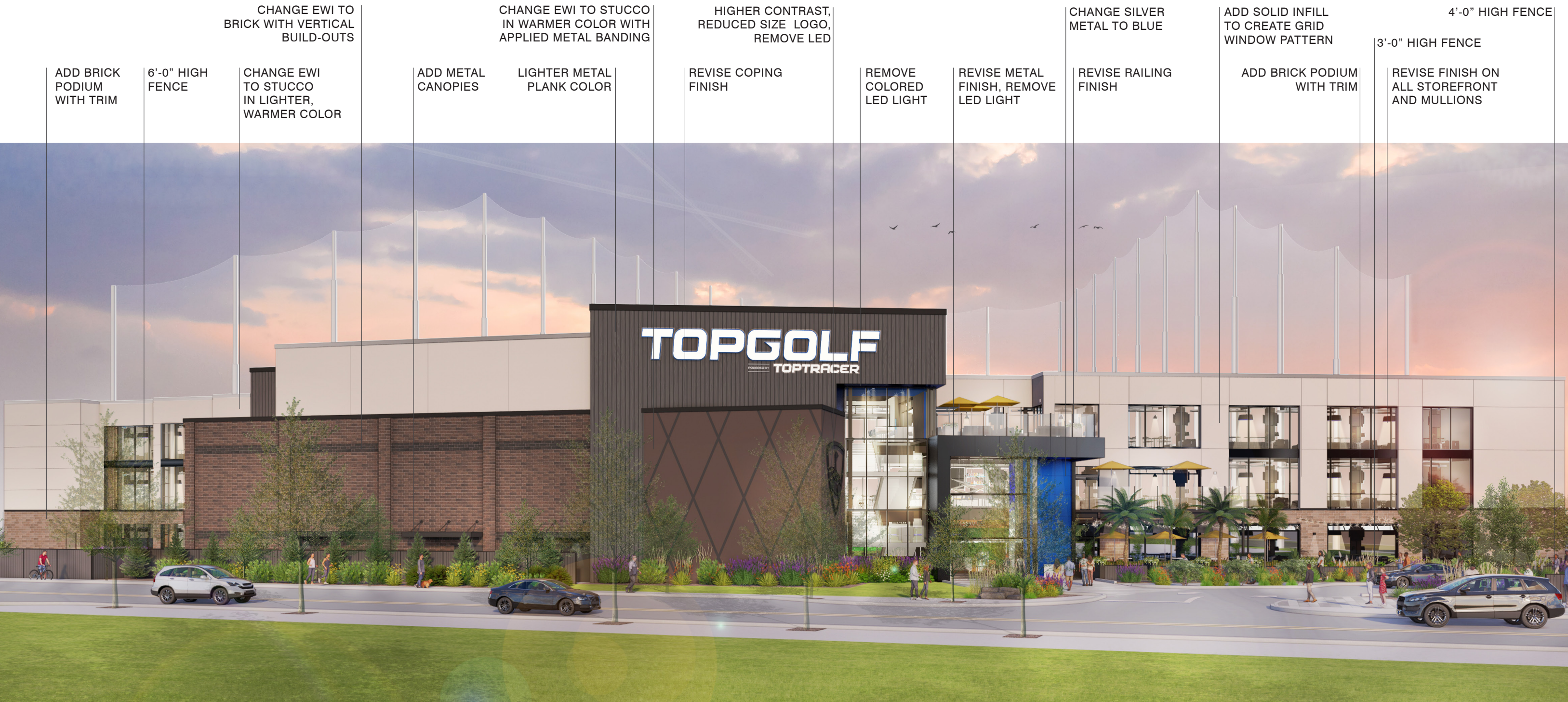
EXTRA SPACE STORAGE



Lower Garden District - Commercial Architecture Context

New Orleans, LA | Exterior Design | August 11th, 2023





ADD BRICK
PODIUM
WITH TRIM

6'-0" HIGH
FENCE

CHANGE EWI TO
BRICK WITH VERTICAL
BUILD-OUTS

CHANGE EWI
TO STUCCO
IN LIGHTER,
WARMER COLOR

ADD METAL
CANOPIES

CHANGE EWI TO STUCCO
IN WARMER COLOR WITH
APPLIED METAL BANDING

LIGHTER METAL
PLANK COLOR

HIGHER CONTRAST,
REDUCED SIZE LOGO,
REMOVE LED

REVISE COPING
FINISH

REMOVE
COLORED
LED LIGHT

REVISE METAL
FINISH, REMOVE
LED LIGHT

CHANGE SILVER
METAL TO BLUE

REVISE RAILING
FINISH

ADD SOLID INFILL
TO CREATE GRID
WINDOW PATTERN

ADD BRICK PODIUM
WITH TRIM

4'-0" HIGH FENCE
3'-0" HIGH FENCE

REVISE FINISH ON
ALL STOREFRONT
AND MULLIONS

Inspired by the rich architectural styles of the Lower Garden District's commercial buildings, we have re-envisioned our venue's facades. Each material and color has been updated to reflect a warmer and brighter pallet. Warm brick, gridded façade patterns, and glazing arrangements reflect the architectural character of the neighborhood.



Proposed Revised Design

New Orleans, LA | Exterior Design | August 11th, 2023



3'-0" HIGH FENCE

UMBRELLAS

STRING LIGHTS

OVERHEAD
DOORS OPEN
TO TEELINE



Patio View

New Orleans, LA | Exterior Design | August 11th, 2023

aria
GROUP

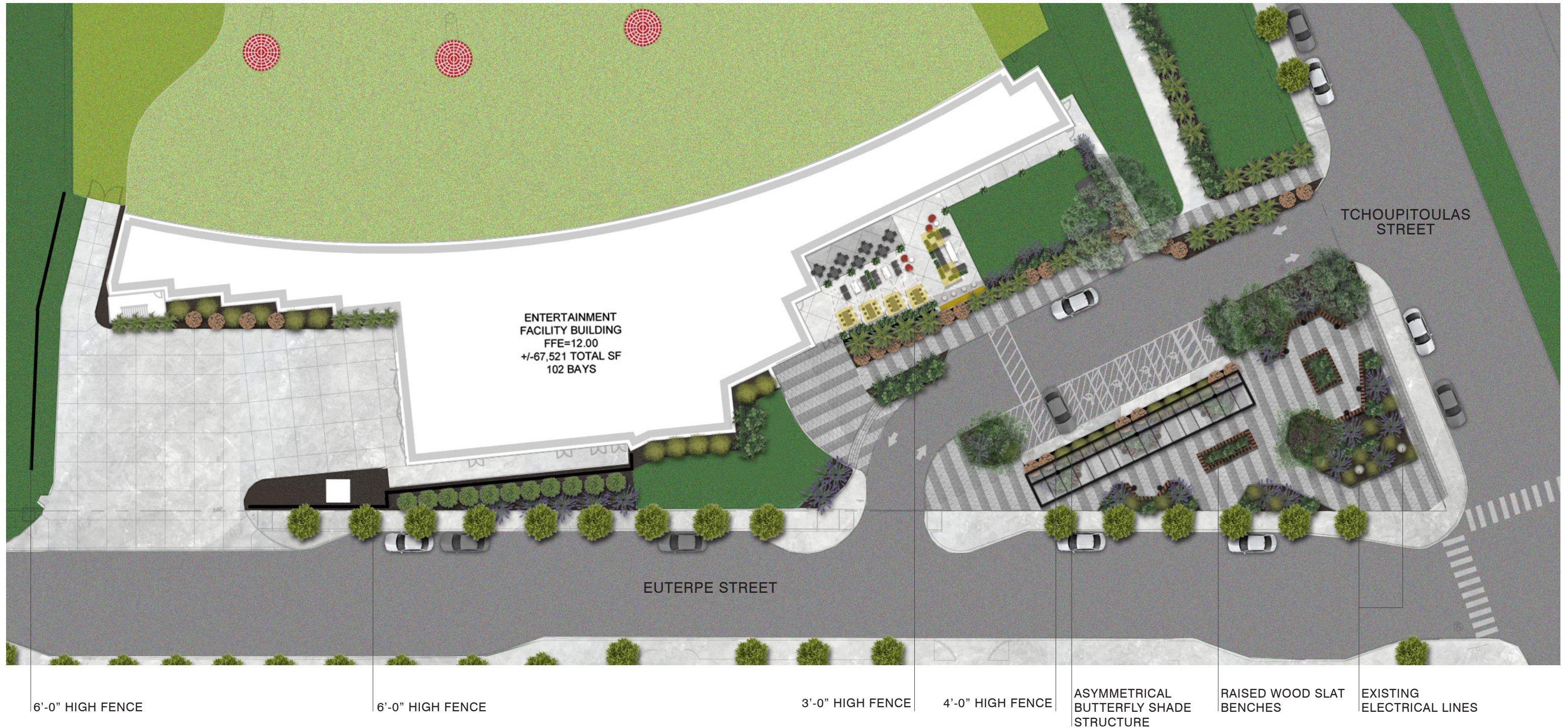


Previously Submitted Prototype Design

New Orleans, LA | Exterior Design | August 11th, 2023



A new public park connects the urban context of Tchoupitoulas, Euterpe and the River District to the venue's entry and outdoor dining areas. ADA parking is screened with fencing and vegetation, while shade trees and planters provide a welcoming atmosphere. Paving patterns inspired by Convention Center Boulevard reflect the broader urban fabric.



Site Plan

New Orleans, LA | Exterior Design | August 11th, 2023



Enlarged Piazza Plan - Version I

New Orleans, LA | Exterior Design | August 11th, 2023

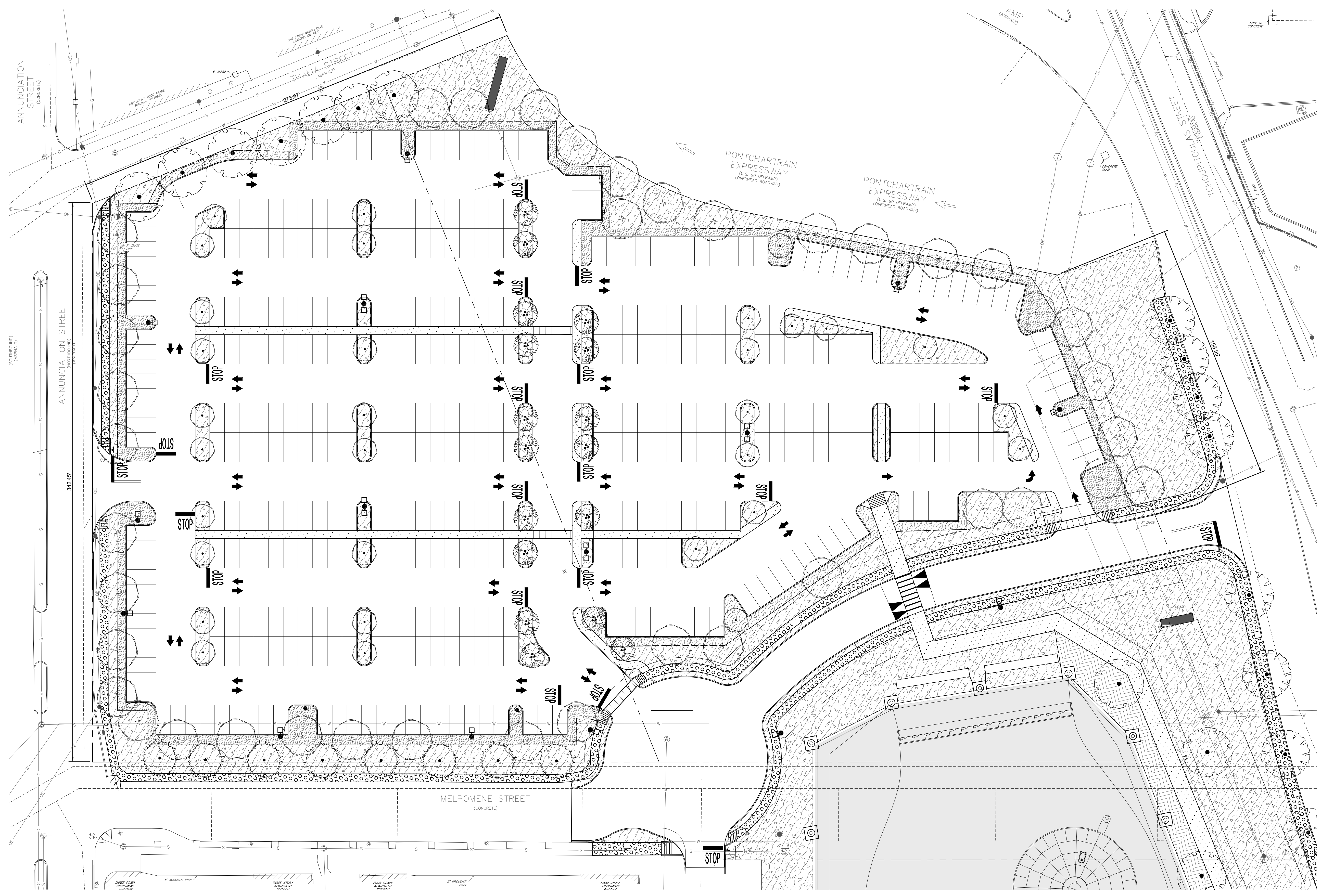
aria
GROUP



Enlarged Piazza Plan - Version II

New Orleans, LA | Exterior Design | August 11th, 2023

aria
GROUP



PLANT SCHEDULE AREA I

TREES	CODE	QTY	COMMON NAME	BOTANICAL NAME	CONT	CAL	HEIGHT
	ACE RUB	8	Red Maple	Acer rubrum	45 Gal Min.	2.5' Cal min.	10' HT Min.
	CER CAN	17	Eastern Redbud	Cercis canadensis	30 Gal Min.	2.5' Cal min.	10' HT Min.
	FRA GRE	40	Green Ash Clear Trunk: G	Fraxinus pennsylvanica	45 Gal Min.	2.5' Cal min.	12' HT Min.
	LAG IND	32	Crape Myrtle	Lagerstroemia indica	45 Gal Min.	2.5' Cal min.	10' HT Min.
	QOU NUT	9	Nuttall Oak	Quercus nuttalli	45 Gal Min.	2.5' Cal min.	12' HT Min.
	TAX DIS	8	Bald Cypress	Taxodium distichum	45 Gal Min.	2.5' Cal min.	12' HT Min.

GROUND COVERS	CODE	QTY	COMMON NAME	BOTANICAL NAME	MAT	RATE	SPACE
	CYN DAC	55,343 sf	Bermuda Grass	Cynodon dactylon	Seed/Sod		
	IPL BED	2,181 sf	Shrub Bed Area	Interior Parking Lot Landscape		3 Gal.	
	PPL BED	12,063 sf	Shrub Bed Area	Perimeter Parking Lot		3 Gal.	

ORLEANS PARISH CODE MATRIX FOR Entertainment Facility @ Euterpe St. & Tchoupitoulas St.

23.6 BUILDING FOUNDATION LANDSCAPE & LANDSCAPE YARDS		
	REQUIRED	PROVIDED
A. BUILDING FOUNDATION LANDSCAPE:	443 LF REQ'D	when NO parking in front of building
1. Single Hedge Row (36" OC)	148 SHRUBS	148 SHRUBS PROVIDED
2. Rest of Area planted w/ vegetative cover.	2659 SF REQ'D	2659 SF PROVIDED
3. Trees and Perennials MAY be supplemental	NONE REQUIRED	NOT PROVIDED
B. FRONT YARD LANDSCAPE:	200 LF x 10'	when parking is in front of building
1. Plant Unit Options per 100 LF	2 Plant Units	2 PLANT UNITS PROVIDED
PLANT UNIT A	2 UNIT REQ'D	
Shade Trees (1/Unit)	2 TREE	2 TREES PROVIDED
Ornamental Trees (2/Unit)	4 TREES	4 TREES PROVIDED
Shrubs (20/Unit)	40 SHRUBS	40 SHRUBS PROVIDED

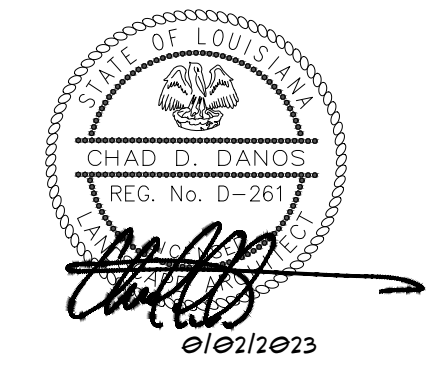
23.7 PARKING LOT LANDSCAPE		
	REQUIRED	PROVIDED
B. PERIMETER PARKING LOT LANDSCAPE	1589 LF	
1. Perimeter Landscape Yard	1589 TRES 5' WIDE	1589 LF PROVIDED
2. Single Hedge Row (1 Shrub every 36" OC)	530 SHRUBS	530 SHRUBS PROVIDED
3. Groundcover or Mulch (Min. 1' Width)	1589 SF REQ'D	1589 SF PROVIDED
4. Shade Trees (1 Shade Tree / 40 LF) OR	40 TREE	40 TREES PROVIDED
5. Ornamental Trees (1 Ornamental / 25 LF)	64 TREE	0 TREES PROVIDED
6. 4' HT Ornamental Fence	4' Ornamental Fence	YES PROVIDED
7. Alternative 3' Wall	3' Wall	NOT PROVIDED
8. Concrete Curbs to Protect Landscape Areas	Raised Curbs	YES PROVIDED
C. INTERIOR PARKING LOT LANDSCAPE	416 SPACES	
1. Parking Lot Islands Between every 10 Spaces	42 ISLANDS	42 PROVIDED
2. Parking End Caps & 10% Interior Required	11332 SF	11332 SF PROVIDED
3. Min. Island Size	160 MIN SF	160 PROVIDED
4. Designed w/ Sustainable Techniques?	YES / NO	YES PROVIDED
5. Planting Requirement		
b) One (1) Shade Tree per Island	42 TREES	42 TREES PROVIDED
c) Shrubs planted in Islands	Shrubs Required	YES SHRUBS PROVIDED
d) 75% of Island Planted w/ Live Material	8424 SF = 75%	100% PROVIDED

23.11 PARKWAY TREES		
	REQUIRED	PROVIDED
A. PARKS & PARKWAY TREES within ROW		
MELPOMENE ST.	1160 LF of ROW	
1. Shade Tree (1 per 40 LF)	29 TREES	29 PROVIDED
1. OR Ornamental Tree (1 per 25 LF)	47 TREES	0 PROVIDED
2. Species/Location reviewed & approved by P&P?	YES / NO	
ANNUNCIATION ST.	342 LF of ROW	
1. Shade Tree (1 per 40 LF)	9 TREES	0 PROVIDED
1. OR Ornamental Tree (1 per 25 LF)	14 TREES	0 PROVIDED
2. Species/Location reviewed & approved by P&P?	YES / NO	
THALIA ST.	274 LF of ROW	
1. Shade Tree (1 per 40 LF)	7 TREES	7 PROVIDED
1. OR Ornamental Tree (1 per 25 LF)	11 TREES	0 PROVIDED
2. Species/Location reviewed & approved by P&P?	YES / NO	
TCHOUPITOUAS ST.	1114 LF of ROW	
1. Shade Tree (1 per 40 LF)	28 TREES	28 PROVIDED
1. OR Ornamental Tree (1 per 25 LF)	45 TREES	0 PROVIDED
2. Species/Location reviewed & approved by P&P?	YES / NO	
EUTERPE ST.	599 LF of ROW*	
1. Shade Tree (1 per 40 LF)	15 TREES	0 PROVIDED
1. OR Ornamental Tree (1 per 25 LF)	24 TREES	2+14* PROVIDED
2. Species/Location reviewed & approved by P&P?	YES / NO	

23.13 SCREENING REQUIREMENTS		
	REQUIRED	PROVIDED
A. REFUSE DISPOSAL DUMPSTERS, et al.		
1. 7' Solid Fence/Wall and Gate Enclosure	YES	YES PROVIDED
Does enclosure compliment Bldg. Architecture?	YES	YES PROVIDED

*Existing trees in row.

TOPGOLF NEW ORLEANS
 NOLA RIVER DISTRICT
 TCHOUPITOUAS ST., NEW ORLEANS, LA
 FOR ARCO MURRAY DESIGN BUILD
 DOWNERS GROVE, ILLINOIS



PROJECT NO. 22-1991
 ISSUE FOR DAC REVIEW
 08/02/2023

CHECKED BY AMR
 DRAWN BY DMS

CONCEPTUAL LANDSCAPE PLAN



PLANT SCHEDULE AREA 2

TREES	CODE	QTY	COMMON NAME	BOTANICAL NAME	CONT	CAL	HEIGHT
	ACE RUB	1	Red Maple	Acer rubrum	45 Gal Min.	2.5' Cal min.	10' HT Min.
	ILE FOS	4	Foster's Holly	Ilex x attenuata 'Foster'	30 Gal Min.	2.5' Cal. min	10' HT Min.
	ILE SA2	2	Savannah Holly Clear Trunk: G	Ilex x attenuata 'Savannah'	45 gal	2.5' Cal Min.	12' HT Min.
	LAG IND	3	Crape Myrtle	Lagerstroemia indica	45 Gal Min.	2.5' Cal. min	10' HT Min.
	QOU NUT	13	Nuttall Oak	Quercus nuttalli	45 Gal Min.	2.5' Cal. min	12' HT Min.
	TAX DIS	19	Bald Cypress	Taxodium distichum	45 Gal Min.	2.5' Cal. min	12' HT Min.
GROUND COVERS	CODE	QTY	COMMON NAME	BOTANICAL NAME	MAT	RATE	SPACE
	BPL MI2	9,627 sf	Shrub Bed Area	Additional Planting Site	Seed		
	BED MIX	3,422 sf	Bed Prep/Mulch Bed Preparation (9" Depth) + Shredded Hardwood Top Dress Mulch (3" Depth) + Soil Conditioners, Fertilizers, Amendments, and Pre-Emergent Herbicides	Bed Prep/Mulch	Soil		
	BFS BED	4,820 sf	Shrub Bed Area	Building Fountain Shrub Area	3 Gal.		
	CYN DAC	55,365 sf	Bermuda Grass	Cynodon dactylon	Seed/Soil		
	PPL BED	1,410 sf	Shrub Bed Area	Perimeter Parking Lot	3 Gal.		

ORLEANS PARISH CODE MATRIX FOR Entertainment Facility @ Euterpe St. & Tchoupitoulas St.

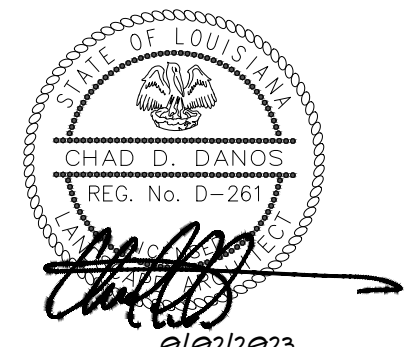
23.6 BUILDING FOUNDATION LANDSCAPE & LANDSCAPE YARDS		
A. BUILDING FOUNDATION LANDSCAPE:	443 LF REQ'D	<i>when NO parking in front of building</i>
1 Single Hedge Row (36" OC)	148 SHRUBS	148 SHRUBS PROVIDED
2 Rest of Area planted w/ vegetative cover:	2659 SF REQ'D	2659 SF PROVIDED
3 Trees and Perennials MAY be supplemental	NONE REQUIRED	NOT PROVIDED
B. FRONT YARD LANDSCAPE:	200 LF x 10'	<i>when parking is in front of building</i>
1 Plant Unit Options per 100 LF	2 Plant Units	2 PLANT UNITS PROVIDED
PLANT UNIT A	2 UNIT REQ'D	
Shade Trees (1/Unit)	2 TREE	2 TREES PROVIDED
Ornamental Trees (2/Unit)	4 TREES	4 TREES PROVIDED
Shrubs (20/Unit)	40 SHRUBS	40 SHRUBS PROVIDED

23.7 PARKING LOT LANDSCAPE		
B. PERIMETER PARKING LOT LANDSCAPE	1589 LF	
1 Perimeter Landscape Yard	1589 LF x 5' WIDE	1589 LF PROVIDED
2 Single Hedge Row (1 Shrub every 36" OC)	530 SHRUBS	530 SHRUBS PROVIDED
3 Groundcover or Mulch (Min. 1" Width)	1589 SF REQ'D	1589 SF PROVIDED
4 Shade Trees (1 Shade Tree / 40 LF) OR	40 TREE	40 TREES PROVIDED
4 Ornamental Trees (1 Ornamental / 25 LF)	64 TREE	0 TREES PROVIDED
5 4' HT Ornamental Fence	4' Ornamental Fence	YES PROVIDED
6 Alternative 3' Wall	3' Wall	NOT PROVIDED
7 Concrete Curbs to Protect Landscape Areas	Raised Curbs	YES PROVIDED
C. INTERIOR PARKING LOT LANDSCAPE	416 SPACES	
1 Parking Lot Islands Between every 10 Spaces	42 ISLANDS	42 PROVIDED
2 Parking End Caps & 10% Interior Required	11232 SF	11232 SF PROVIDED
3 Min. Island Size	160 MIN SF	160 PROVIDED
4 Designed w/ Sustainable Techniques?	YES / NO	YES PROVIDED
5 Planting Requirement		
a) One (1) Shade Tree per Island	42 Trees	42 TREES PROVIDED
b) Shrubs planted in Islands	Shrubs Required	YES SHRUBS PROVIDED
d) 75% of Island Planted w/ Live Material	8424 SF = 75%	100% PROVIDED

23.11 PARKWAY TREES		
A. PARKS & PARKWAY TREES within ROW		
MELPOMENE ST.	1160 LF of ROW	
1 Shade Tree (1 per 40 LF)	29 TREES	29 PROVIDED
1 OR Ornamental Tree (1 per 25 LF)	47 TREES	0 PROVIDED
2 Species/Location reviewed & approved by P&P?	YES / NO	
ANNUNCIATION ST.	342 LF of ROW	
1 Shade Tree (1 per 40 LF)	9 TREES	0 PROVIDED
1 OR Ornamental Tree (1 per 25 LF)	14 TREES	0 PROVIDED
2 Species/Location reviewed & approved by P&P?	YES / NO	
THALIA ST.	274 LF of ROW	
1 Shade Tree (1 per 40 LF)	7 TREES	7 PROVIDED
1 OR Ornamental Tree (1 per 25 LF)	11 TREES	0 PROVIDED
2 Species/Location reviewed & approved by P&P?	YES / NO	
TCHOUPITOULAS ST.	1114 LF of ROW	
1 Shade Tree (1 per 40 LF)	28 TREES	28 PROVIDED
1 OR Ornamental Tree (1 per 25 LF)	45 TREES	0 PROVIDED
2 Species/Location reviewed & approved by P&P?	YES / NO	
EUTERPE ST.	599 LF of ROW*	
1 Shade Tree (1 per 40 LF)	15 TREES	0 PROVIDED
1 OR Ornamental Tree (1 per 25 LF)	24 TREES	2+14* PROVIDED
2 Species/Location reviewed & approved by P&P?	YES / NO	

23.13 SCREENING REQUIREMENTS		
A. REFUSE DISPOSAL DUMPSTERS, et al.		
1 7' Solid Fence/Wall and Gate Enclosure	YES	YES PROVIDED
Does enclosure compliment Bldg. Architecture?	YES	YES PROVIDED

TOPGOLF NEW ORLEANS
 NOLA RIVER DISTRICT
 TCHOUPITOULAS ST., NEW ORLEANS, LA
 FOR ARCO MURRAY DESIGN BUILD
 DOWNERS GROVE, ILLINOIS



PROJECT NO. 22-1991
 ISSUE FOR DAC REVIEW
 08/02/2023

CHECKED BY: AMR
 DRAWN BY: DMS

CONCEPTUAL LANDSCAPE PLAN

Z:\2022\22-1991\LANDSCAPE\DESIGN\2022-1991_LG_CONCEPT_LANDSCAPE_PLAN_V3.DWG