

1923 St Charles Ave

DAC Meeting

13 December 2023

Meeting Notes



- Currently, the arch design is repeated as an architectural feature the site. Neighboring properties utilize the arch design in a much more subtle manner. Update the design so that is not such a dominant feature. An example would be an introduction of square windows throughout the site.
- Provide windows that open towards the public right of way.
- Update the design to include more visible railings, overhangs and or balconies. HDLC stated that the applicant can lease air rights from the City to have overhang over the public right of way.
- Include a warmer tone of the proposed bricks.
- Consider making the entrance of the property more visible from the street.

What we also heard...

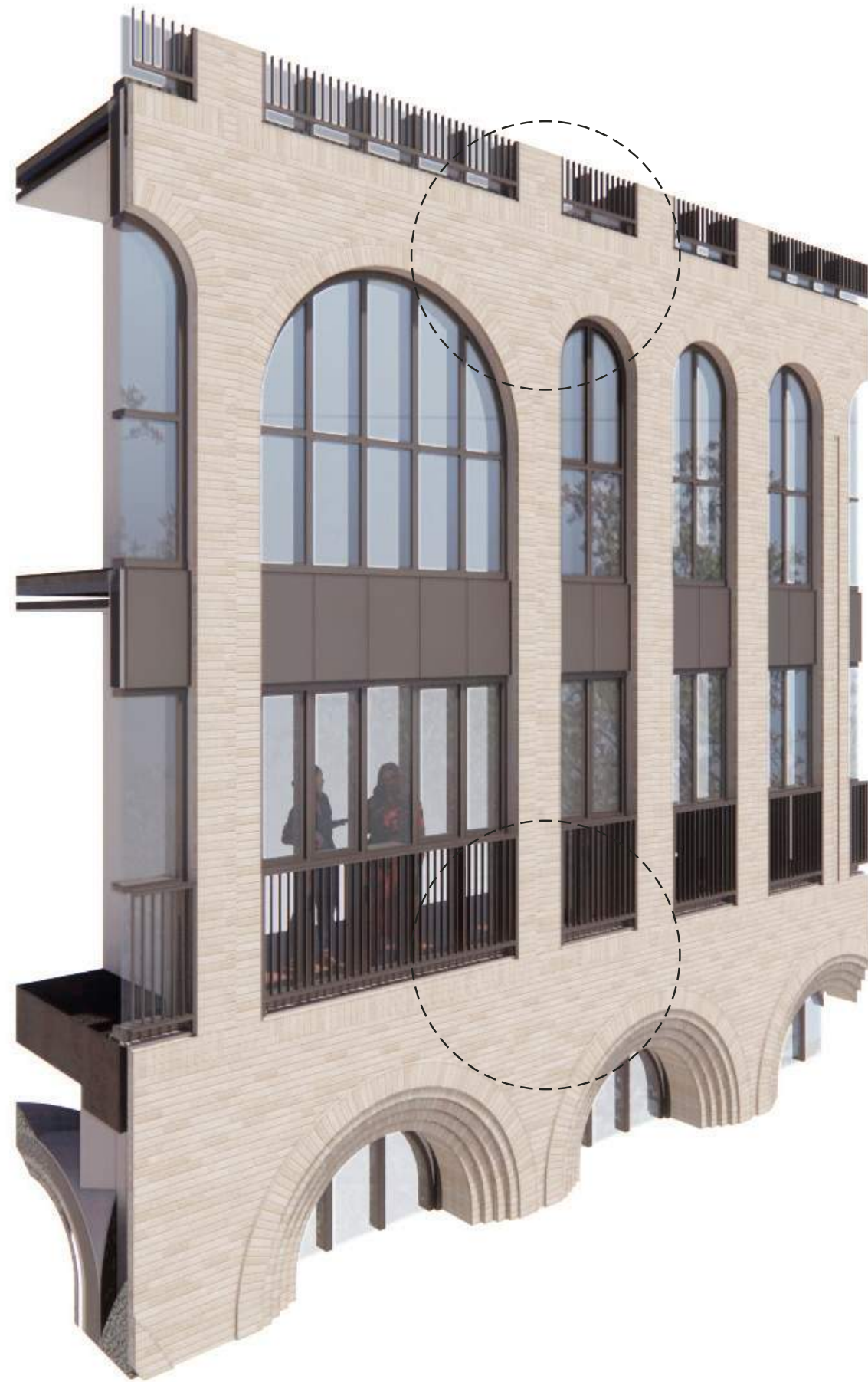
- Study facade relief / brick detailing
- Incorporate horizontal articulation at building base and top.



Facade Relief / Brick Detailing



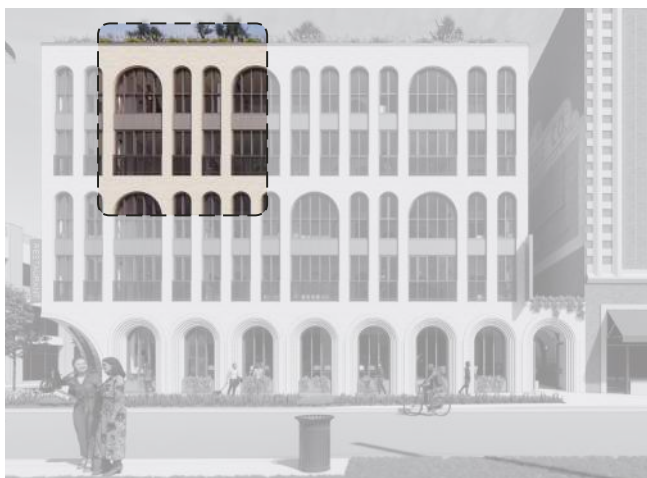
Facade Relief | Brick Detailing + Horizontal Articulation (DAC Meeting - November 8th)



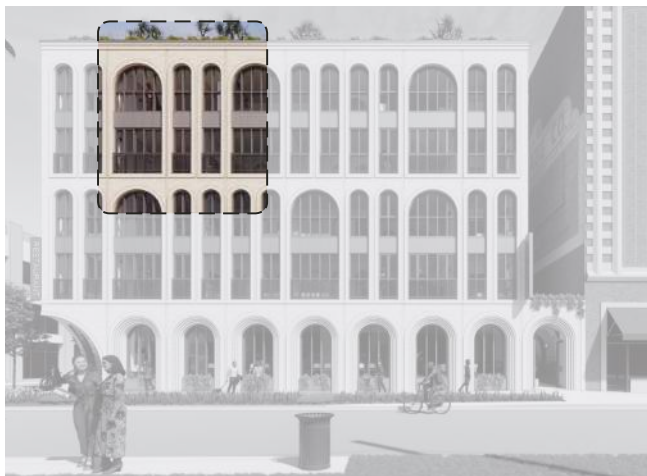
Facade Relief | Brick Detailing + Horizontal Articulation (DAC Meeting - November 8th)



Facade Relief | Brick Detailing + Horizontal Articulation (DAC Meeting - December 13th)



Facade Relief | Brick Detailing + Horizontal Articulation (DAC Meeting - November 8th)



Facade Relief | Brick Detailing + Horizontal Articulation (DAC Meeting - December 13th)



Facade Relief | Brick Detailing + Horizontal Articulation (DAC Meeting - November 8th)



Facade Relief | Brick Detailing + Horizontal Articulation (DAC Meeting - December 13th)



Horizontal articulation at building Base and Top

& St. Charles Facade Precedents



1136 ST. CHARLES



1704 ST. CHARLES



1532 ST. CHARLES



601 ST. CHARLES

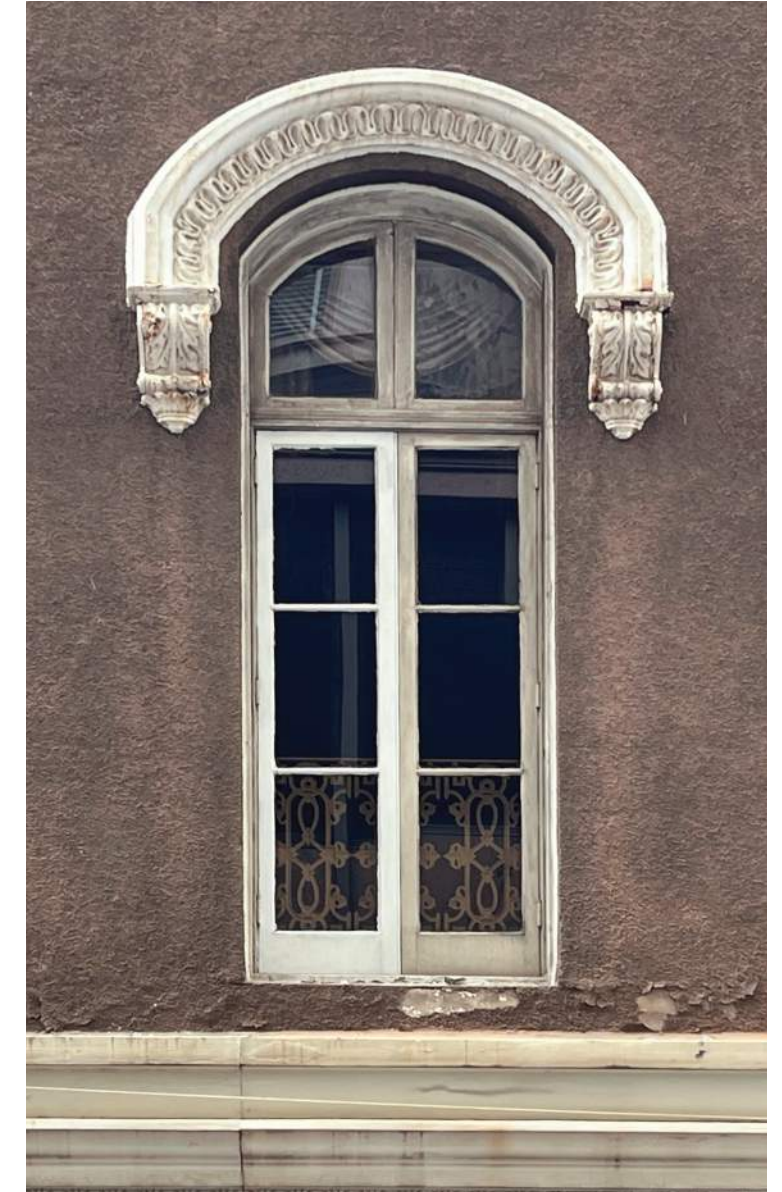
St. Charles Architecture | Arches + Juliet Balconies



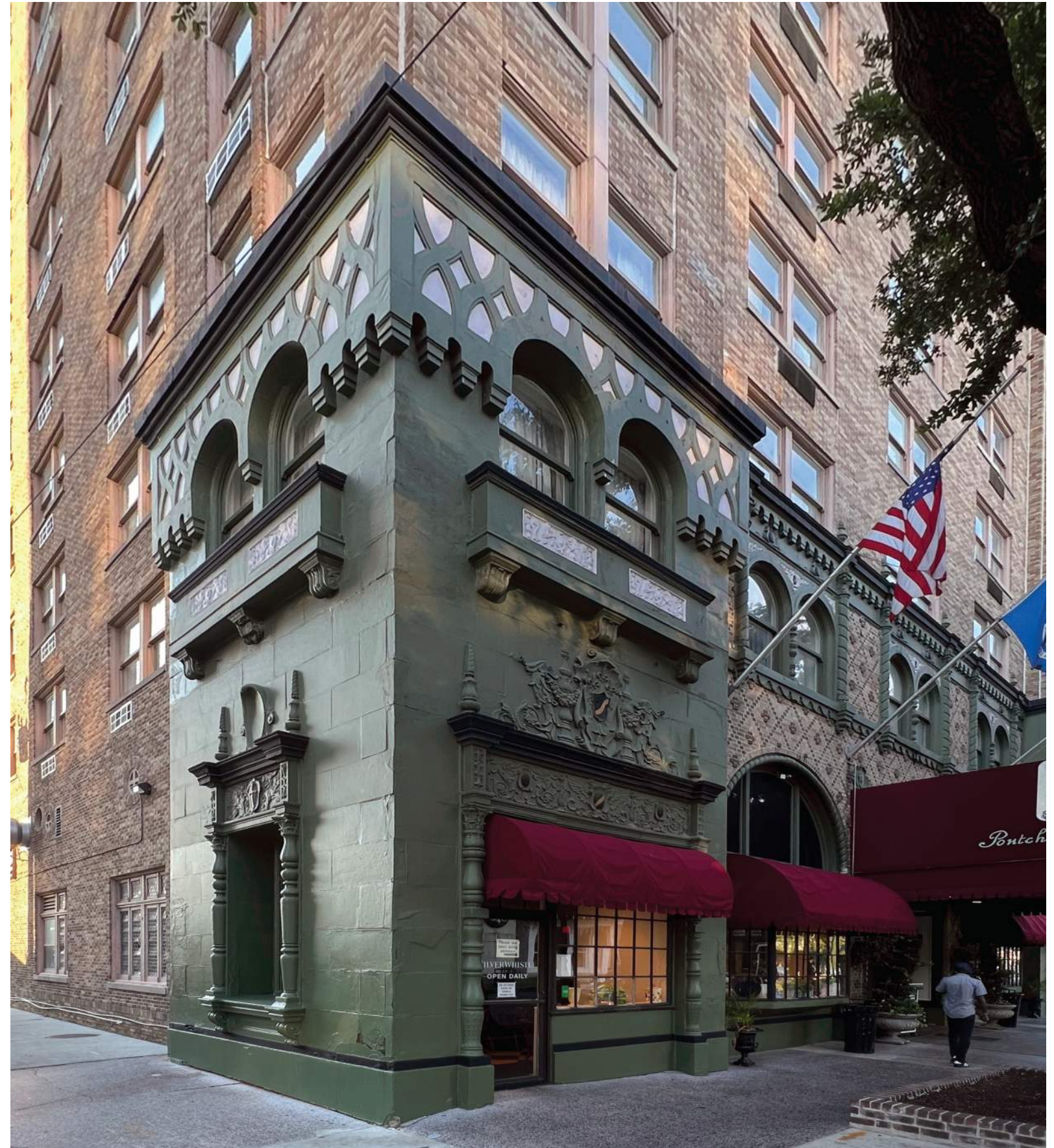
210 ST. CHARLES



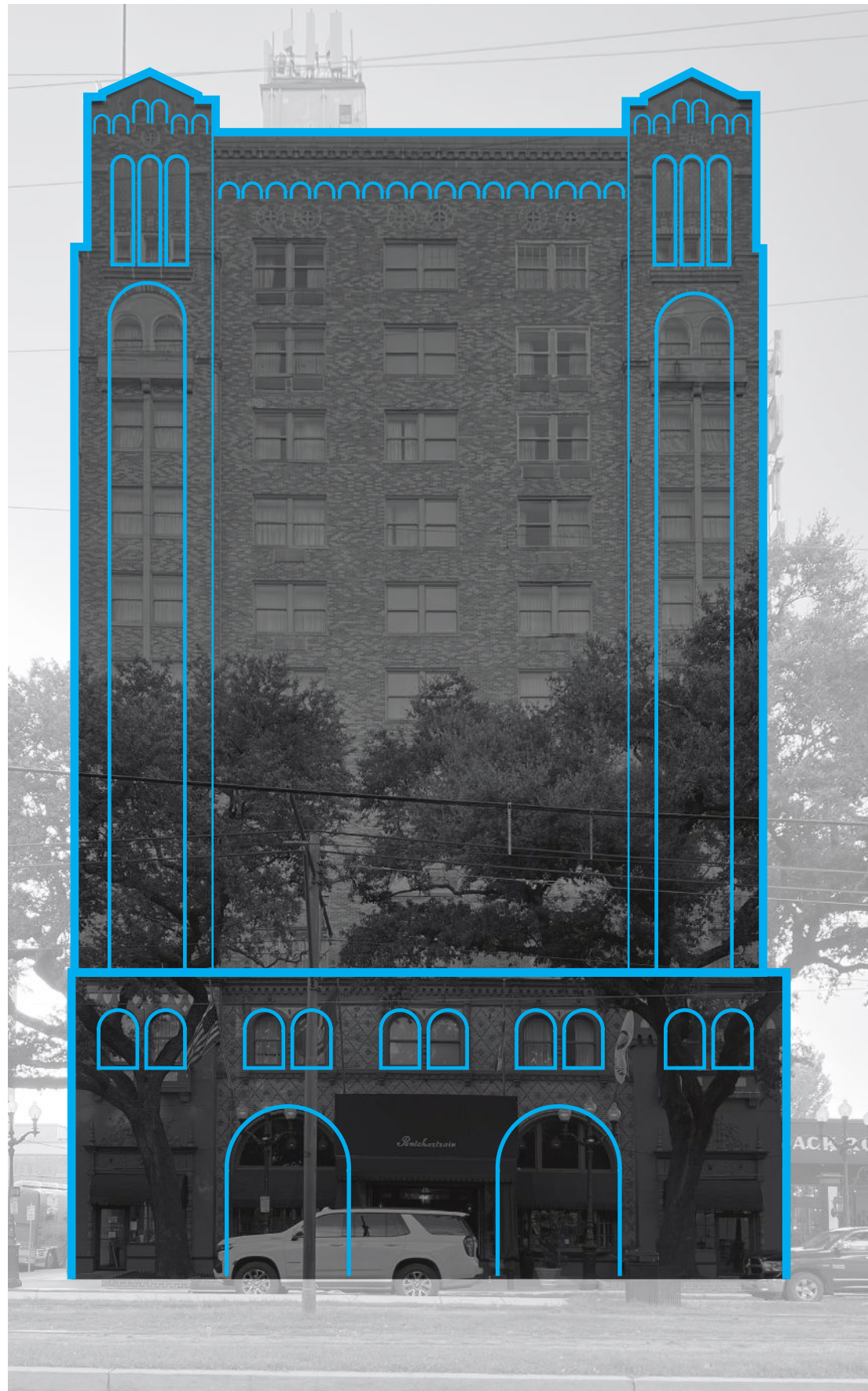
304 ST. CHARLES



St. Charles Architecture | Arches + Juliet Balconies



The Pontchartrain



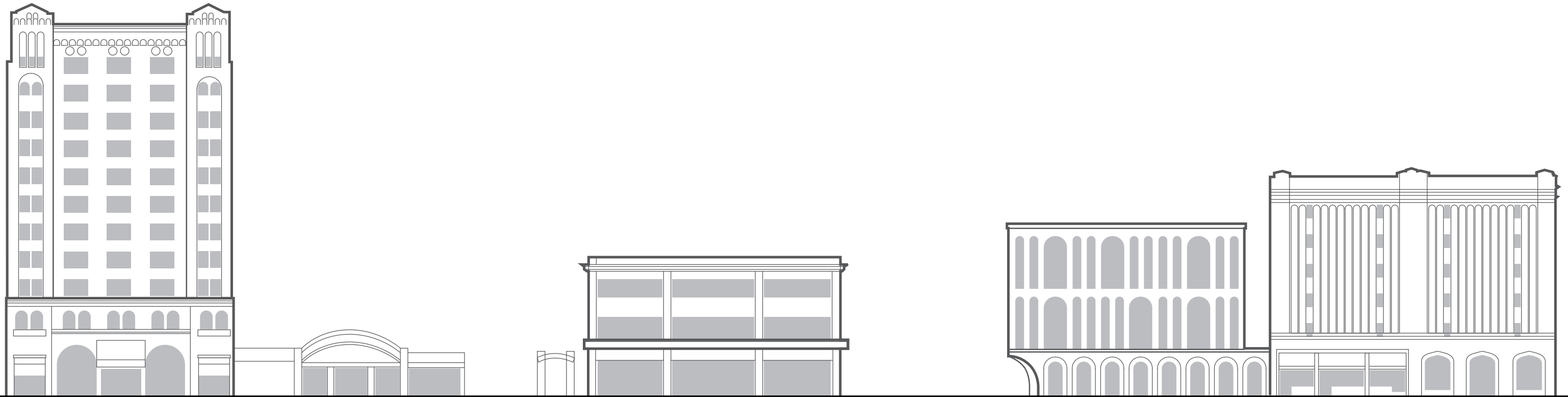
The Pontchartrain



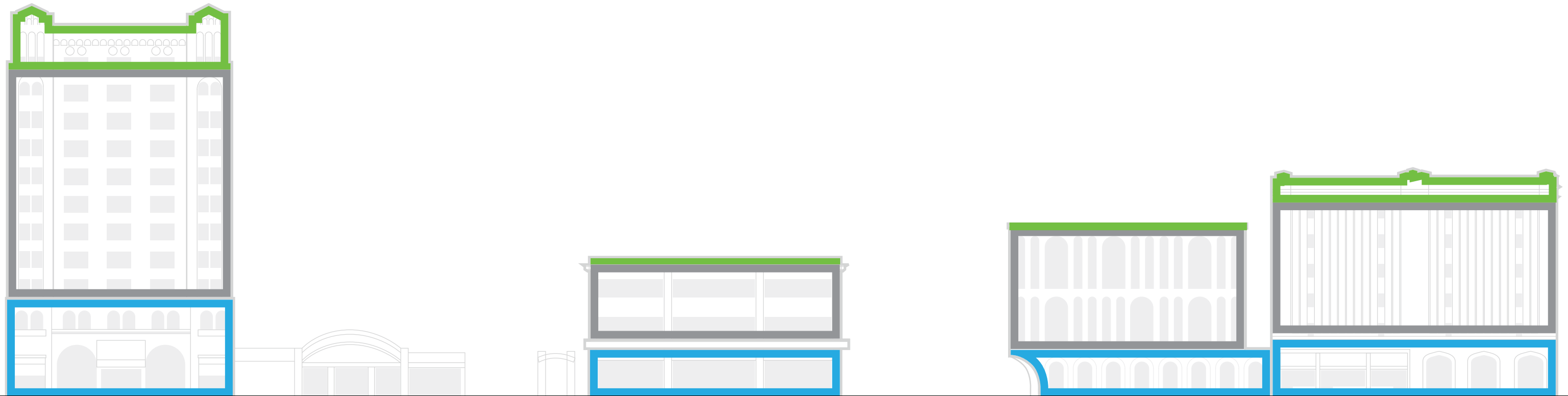
Public Storage Building



Public Storage Building



Building Articulation



Building Articulation



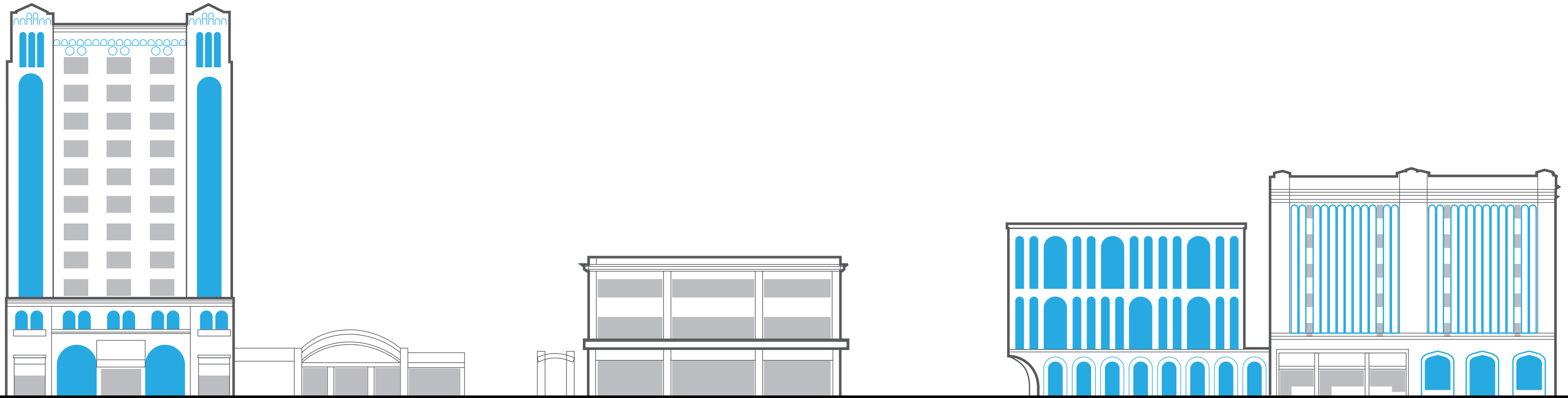
BASE



BODY



TOP



Building Articulation

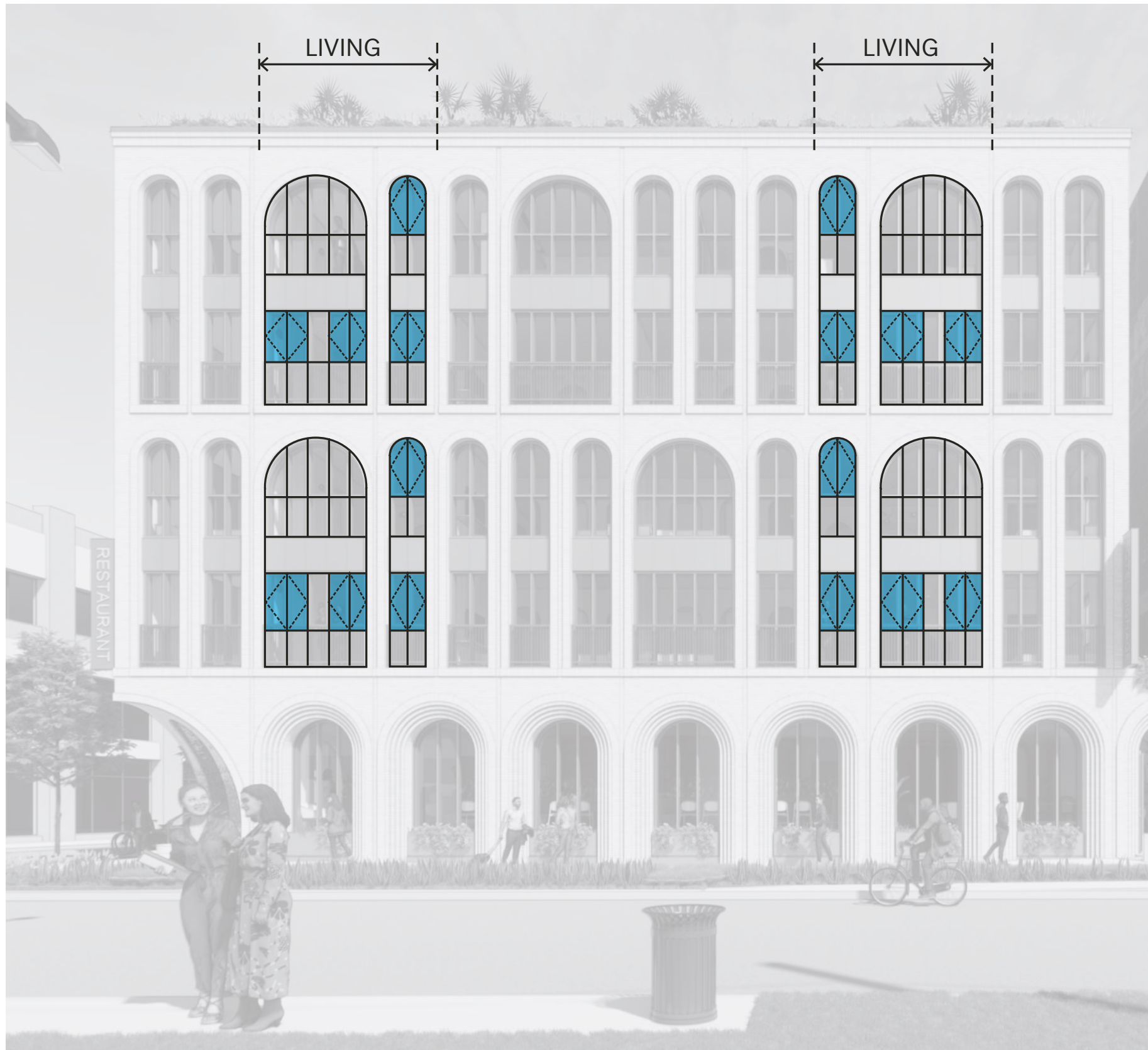


Balconies and Operable Window Strategy

on St. Charles Ave. Facade



Scheme A | Enhanced Facade



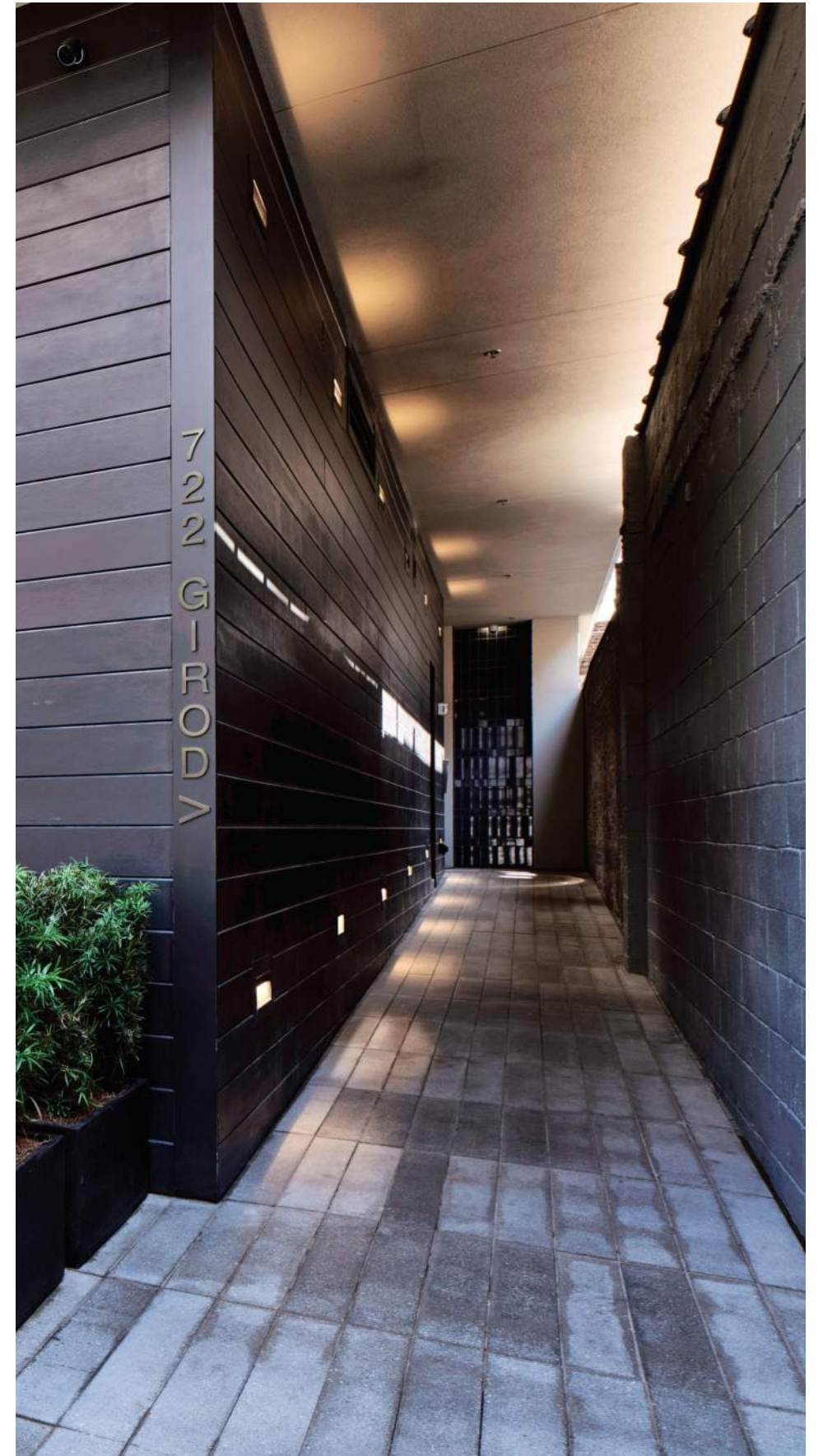
Juliet Balconies



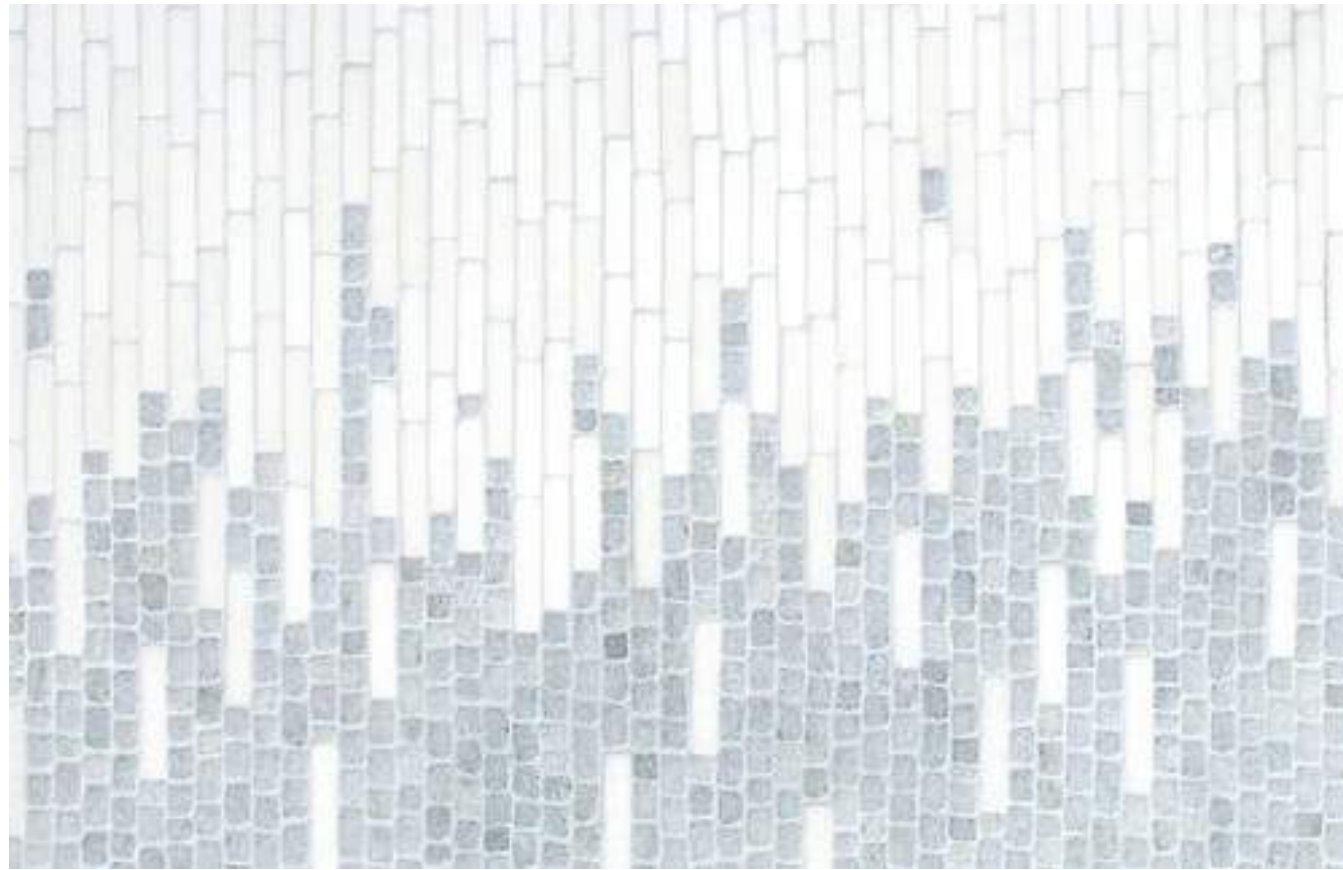
Hotel Entrance Materiality



Hotel Entrance Materiality *(DAC Meeting - November 8th)*



Hotel Entrance Materiality



Hotel Entrance Materiality



Hotel Entrance Materiality (*DAC Meeting - December 13th*)



DAC Meeting
November 8th



DAC Meeting
December 13th

Hotel Entrance Materiality



Facade Brick Tonality



Facade Brick Tonicity



Facade Brick Tonality

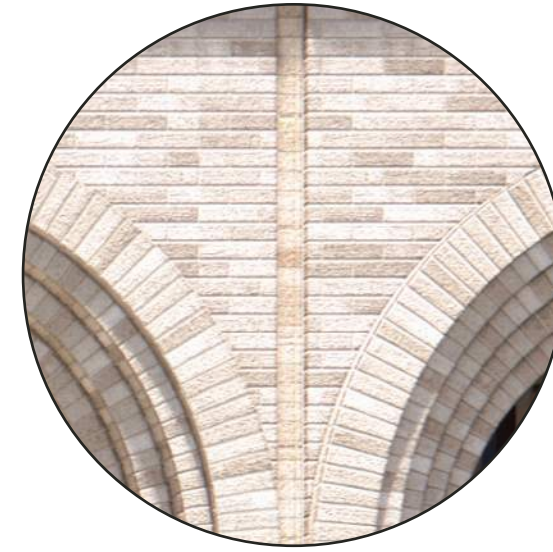


DAC Meeting
November 8th



DAC Meeting
December 13th

Facade Brick Tonality



Facade Brick Tonicity



Additional Facade Study



Original Scheme
DAC Meeting (November 8th)



Scheme B
DAC Meeting (December 13th)

Scheme Comparison



Scheme A | Enhanced Facade with Square Windows



Scheme B | Enhanced Facade with Square Windows



Scheme A | Enhanced Facade