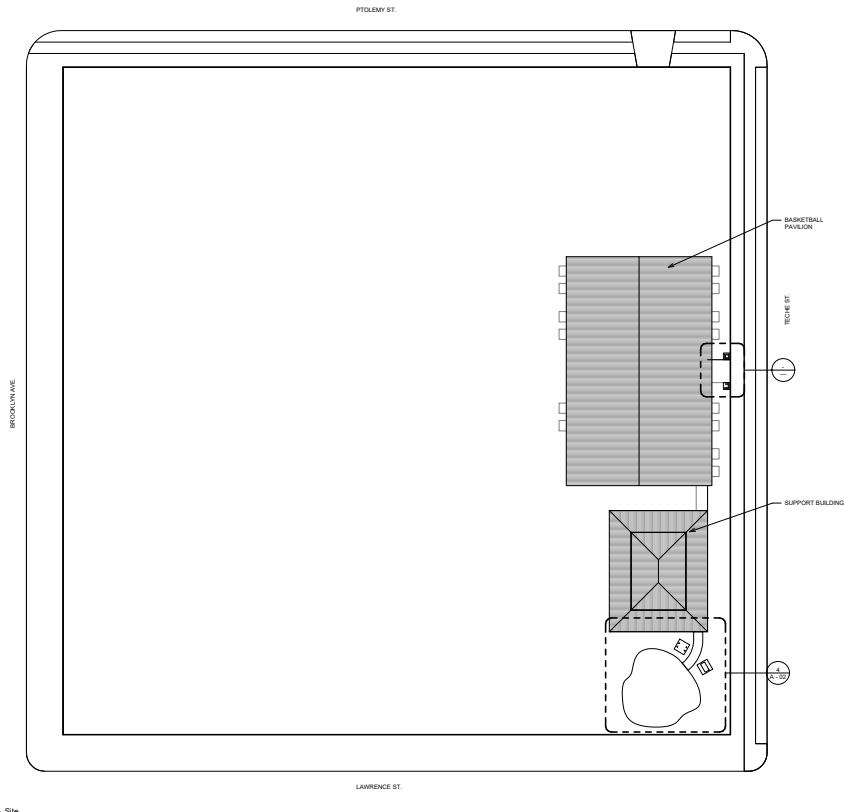


Address: 1500-1550 Teche St.,  
New Orleans, LA 70114

Project Information:  
Codes: NFPA 101, IBC 2015  
Construction Type: V  
Occupancy Classification:  
Number of Stories: 1  
Building Square Footage:  
Indoor Support Building: 816 sf  
Open Air Basketball Pavilion: 6,400 sf

Sheet List

- A - 00 Cover Sheet
- A - 01 Plan/Sections
- A - 02 Basketball Pavilion



① Site  
1" = 20'-0"

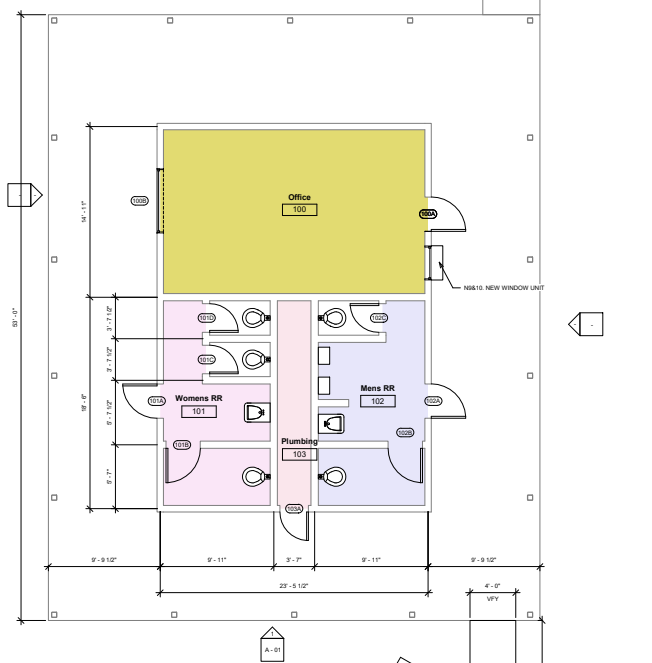
No.	Description	Date

City of New Orleans, CPA  
Devore Playground  
Cover Sheet

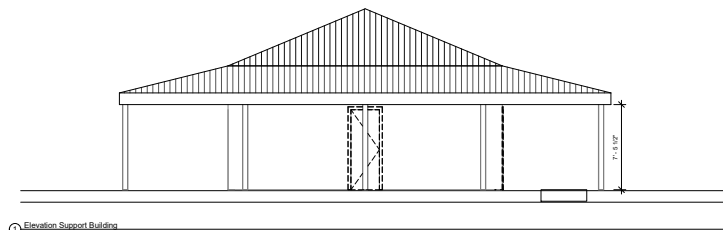
Project Number	4039
Date	2/5/22
Drawn By	Author
Checked By	Checker

**A - 00**  
Scale 1" = 20'-0"

2/7/22 2:37:27 PM



② Plan Support Building  
1/4" = 1'-0"



① Elevation Support Building  
1/4" = 1'-0"

Opening Schedule						
Mark	Type	Mark	Size		Hardware	Type Comments
			H	W		
100A	A	7'-0"	8'-0"	8'-0"	WALL-RESISTANT	NEW EXTERIOR DOOR & FRAME PROVIDE VANDAL-RESISTANT HARDWARE OWNER MUST APPROVE HARDWARE SELECTION
100B	B	9'-8"	3'-0"	3'-0"	WALL-RESISTANT	NEW EXTERIOR DOOR & FRAME PROVIDE VANDAL-RESISTANT HARDWARE OWNER MUST APPROVE HARDWARE SELECTION
101A	A	6'-0"	8'-0"	8'-0"	WALL-RESISTANT	NEW EXTERIOR DOOR & FRAME PROVIDE VANDAL-RESISTANT HARDWARE OWNER MUST APPROVE HARDWARE SELECTION
101B	B	4'-7"	3'-0"	3'-0"	RR STALL HARDWARE	NEW BATHROOM DOOR AT EXISTING FRAME REMOVE BOTTOM 7" OF FRAME, BENEATH ANCHOR BOLT SEAL BOTTOM AS REQUIRED TO ENSURE NO SHARP EDGES NEW BATHROOM STALL HARDWARE SELECTION TO BE APPROVED BY OWNER
101C	C	4'-7"	2'-6"	3'-2"	RR STALL HARDWARE	NEW BATHROOM DOOR AT EXISTING FRAME REMOVE BOTTOM 7" OF FRAME, BENEATH ANCHOR BOLT SEAL BOTTOM AS REQUIRED TO ENSURE NO SHARP EDGES NEW BATHROOM STALL HARDWARE SELECTION TO BE APPROVED BY OWNER
101D	D	4'-7"	2'-6"	3'-2"	RR STALL HARDWARE	NEW BATHROOM DOOR AT EXISTING FRAME REMOVE BOTTOM 7" OF FRAME, BENEATH ANCHOR BOLT SEAL BOTTOM AS REQUIRED TO ENSURE NO SHARP EDGES NEW BATHROOM STALL HARDWARE SELECTION TO BE APPROVED BY OWNER
102A	A	7'-0"	3'-0"	3'-0"	WALL-RESISTANT	NEW EXTERIOR DOOR & FRAME PROVIDE VANDAL-RESISTANT HARDWARE OWNER MUST APPROVE HARDWARE SELECTION
102B	B	6'-7"	8'-0"	8'-0"	RR STALL HARDWARE (AD 3)	NEW BATHROOM DOOR AT EXISTING FRAME REMOVE BOTTOM 7" OF FRAME, BENEATH ANCHOR BOLT SEAL BOTTOM AS REQUIRED TO ENSURE NO SHARP EDGES NEW BATHROOM STALL HARDWARE SELECTION TO BE APPROVED BY OWNER
102C	C	4'-7"	2'-6"	3'-2"	RR STALL HARDWARE	REQUIRED TO ENSURE NO SHARP EDGES NEW BATHROOM STALL HARDWARE SELECTION TO BE APPROVED BY OWNER
103A	B	7'-0"	2'-6"	3'-2"	WALL-RESISTANT	NEW EXTERIOR DOOR & FRAME PROVIDE VANDAL-RESISTANT HARDWARE OWNER MUST APPROVE HARDWARE SELECTION

OPENING NOTES: REMOVE ALL EXISTING DOORS. REMOVE EXTERIOR DOOR FRAMES. INTERIOR STALL PARTITION FRAMES TO REMAIN. SEE NOTES ABOVE. ALL NEW DOORS AND FRAMES TO BE BM

**DRAWING NOTES**

- Remove & replace plywood ceilings in the bathrooms and the office (approximately 650 SF)
- Replace bathroom fixtures with non-stainless steel fixtures, including toilets, urinals, sinks, faucets, soap dispensers, and paper towel dispensers
- Remove and replace exterior water fountain (AD 3)
- Replace the light fixtures in the bathrooms of both and in the office (4 total), install a new LED light fixture in the partition office.
- Install light-controlled exhaust fan in restrooms at existing header locations in restrooms
- Paint interior and exterior of support building. Use graffiti-resistant paint at exterior
- Colors to be approved by owner agency
- This note is retained per addendum 1.
- Remove west side of the office and 8'-0" of the north side of the office. Counter will remain and be moved to new west side opening. (100B)
- Install a new window unit in the office space, at existing opening.
- Cut or remove and replace existing metal grate at office opening to allow for new window unit.
- Install a new metal security grate around exterior of new window unit.
- Provide new vent for recessed ceiling lights.
- Field-verify all measurements on site.
- Opening 100B to be a new exterior door, as shown on the opening schedule. (AD 1)

No.	Description	Date

City of New Orleans, CPA  
Devore Playground  
Plan/Sections

Project Number 4039  
Date 2/5/22  
Drawn By Author  
Checked By Checker

**A - 01**

Scale 1/4" = 1'-0"

2/7/2022 2:37:52 PM

