

City of New Orleans

Interim Small Cell Guidelines

March 12, 2021

These guidelines have been drafted with input from the following agencies:

- City Attorney's Office
- Mayor's Office of Utilities
- Department of Public Works
- Department of Safety & Permits
- Department of Parks & Parkways
- Historic District Landmarks Commission
- Vieux Carré Commission
- City Planning Commission

Table of Contents

Contents

Table of Contents	2
1 Background.....	5
1.1 Federal Law on Small Cell Infrastructure.....	6
1.2 Local Laws on Small Cell Infrastructure.....	6
2 Adoption.....	7
3 Purpose.....	8
3.1 Goals of the Guidelines	8
3.2 Areas of Special Interest.....	8
4 Small Cell ROW Application and Permit Process.....	9
4.1.7 GIS Map, Description of Number and Dimensions of Facilities to be Installed.....	12
5 General Guidelines	13
5.1 General Location Guidelines.....	13
5.2 Collocation.....	13
5.3 Location Specifications.....	15
5.3.7 Minimum Spacing Requirements	15
Table 5-1: Pole Spacing Standards	16
5.3.8 Required Setbacks	19
5.4 Height Restrictions and Requirements.....	20
5.5 Environmental Safety	21
5.6 Notice to Community	22
6 General Aesthetic Standards.....	23
7 Guidelines Regarding Areas of Special Interest.....	25
7.1 Definition of Areas of Special Interest.....	25
7.2 General Guidelines for Areas of Special Interest.....	25
7.3 Historic District Landmarks Commission Districts.....	25
7.3.1 General Guidelines in Historic District Landmarks Commission Districts	26
7.3.2 Installation Type Preferences	27
7.3.3 Installation Details and Specifications – Collocation of Small Wireless Facilities	27
7.3.4 Installations Details and Specifications – New Small Wireless Facilities.....	28
7.3.5 Ground Mounted Small Wireless Equipment Details and Specifications.....	28
7.4 Vieux Carré Historic District.....	29
7.4.1 General Guidelines in the Vieux Carré Historic District.....	29
7.4.1.2 Installations within the greater Vieux Carré Historic District.....	29
7.4.2 Location Preferences for Installation of Small Wireless Facilities	30
7.4.3 Installation Type Preferences	31

7.4.4	Installation Details and Specifications.....	32
7.5	Department of Parks and Parkways	32
7.5.1	Tree and Landscape Protection Requirement.....	32
7.5.2	Turf	34
7.5.3	Prohibited installations.....	34
7.6	Special Interest Area Maps.....	35
7.6.1	Historic District Landmarks Commission Historic Districts.....	35
7.6.2	Historic District Landmarks Commission Individual Landmarks [ADD MAP]	44
7.6.4	Downtown Development District.....	46
8	General Requirements for Small Cell Equipment.....	47
8.1	Wireless Support Structure Design Specifications	47
8.1.1	Pole Specifications.....	47
8.1.2	Transformer Base	47
8.1.3	Foundation	47
8.1.4	Color	47
8.2	Antennas.....	47
8.2.1	Maximum Size	47
8.2.2	Mounting Location	48
8.2.3	Design Specifications	48
8.3	Associated Small Cell Facilities and Equipment.....	48
8.3.1	Maximum Size	48
8.3.2	Encroachments Prohibited	48
8.3.4	Color	48
8.4	Small Cell Facilities Mounted to Wireless Support Structures	49
8.4.1	Minimum Mounting Height.....	49
8.4.2	Maximum Permitted Protrusion of Enclosure from Wireless Support Structure Pole	49
8.4.3	Required Enclosure Mounting Location	49
8.4.4	Required Arrangement of Multiple Small Cell Facility Cabinets.....	49
8.4.5	Design Specifications	49
8.5	Small Cell Facilities Cabinets Integrated within a Wireless Support Structure Transformer Base.....	50
8.5.1	Transformer Base/Cabinet Size.	50
8.5.2	Siting Requirements	50
8.5.3	Design Specifications	50
8.6	Ground-Mounted Small Cell Facilities	50
8.6.1	Siting Requirements	50
8.6.2	Design Specifications	51

8.6.3	Additional Landscape Screening.....	51
8.7	Power Supply and Fiber Optic Connections (All Request Types)	51
8.7.1	Independent Power and Communication Sources Required	51
8.7.2	Utility Undergrounding Required	51
8.7.3	Wiring, Cables and Conduit Requirements	52
8.8	Other Small Cell Facilities Prohibitions.....	52
8.8.1	Lighting	52
8.8.2	Signage	52
8.8.3	Prohibited Wireless Facilities	52
8.9	Removal of Small Cell Facilities and Wireless Support Structures (Type 3 Requests)	52
8.9.1	Remediation of City-Owned Support Structures.....	52
8.9.2	Remediation of Sites.....	52
9	Definitions	53

1 Background

The City of New Orleans oversees and manages hundreds of miles of right-of-way within the City's municipal limits. There are numerous competing demands upon the use of this space, including by pedestrians, adjoining property owners, municipal utilities, and regulated utilities. The City is responsible for managing these competing present and future demands while at the same time promoting and protecting the public health, safety, and welfare.

With a rich history of more than 300 years, the City of New Orleans has a significant interest in protecting and promoting its unique cultural and historic assets. As New Orleans looks toward the next 100 years, the City is also focused on equitable neighborhoods that provide the best technology and resources for residents, visitors, and businesses. The public space is essential to the quality of life in New Orleans and serves as the City's civic, cultural, and physical framework that provides the opportunity for public assembly. Any new use made of that public space must be adapted to the special characteristics of New Orleans while also considering the City's obligations noted above.

To address growing customer demand for faster wireless technology, cellular providers have proposed to increase the capacity of their networks by deploying Small Cell infrastructure. Small Cell infrastructure consists of antennas and related power equipment that are installed in closer proximity to users on the ground to improve cellular and data coverage in small geographic areas. Installed Small Cell facilities will improve the provider's ability to meet current 4G (LTE) voice and data demands but may be modified with future 5G high-speed equipment as technology improves. To provide the necessary coverage to support these more robust communication networks, each telecommunications provider is expected to install infrastructure to serve their individual needs; additionally, some companies serve as infrastructure providers, installing equipment that will house infrastructure for specific or multiple cellular providers. Like other utilities, State law allows telecommunication providers to place Small Cell infrastructure equipment in the public right-of-way.

In anticipation of 5G implementation and in response to recent orders of the Federal Communication Commission (FCC), the City adopted City Code Sec. 30, Div. 3 Wireless Franchise Act: Facilities in the Public Right of Way (the "Ordinance"). This ordinance sets forth the wireless facility franchise and permit requirements, thereby providing the City with a process for managing, and uniform standards for acting upon, requests for the placement of wireless telecommunications facilities (Small Cell facilities) within the right-of-way consistent with the City's obligation to promote the public health, safety, and welfare; to manage the right-of-way; and to ensure that the public's use is not obstructed or incommoded by the use of the right-of-way for the placement of wireless telecommunications facilities.

Pursuant to City Code Section 30-65 of the Wireless Franchise Act and consistent with the FCC Orders, the City has developed guidelines that will allow cellular companies to locate Small Cell installations in a way that maximizes technological benefits while attempting to preserve street-side aesthetics. Small Cell infrastructure will affect the function and aesthetics of public spaces. Moreover, there are numerous providers already operating in New Orleans. The end result is a significant demand upon a limited resource. Cities across the nation are beginning to address the issue of balancing the need to accommodate increased cellular demand with their community's public space character and function. These guidelines build from those efforts in a way that is appropriate to the needs of the City of New Orleans.

1.1 Federal Law on Small Cell Infrastructure

Local regulation of wireless infrastructure is subject to the parameters of Federal and State law. In 2018, the Federal Communications Commission (FCC) issued a series of orders that imposed requirements on municipalities regarding wireless infrastructure regulations. Under the FCC orders, no local regulation may prohibit or have the effect of prohibiting the ability of any entity to provide telecommunications service. Any local regulations must be competitively neutral and nondiscriminatory. Under the Home Rule Charter, the City retains the authority to regulate wireless infrastructure in the right-of-way provided that any such local regulation must be reasonable and defensible on public health, safety, and welfare grounds. As required by Federal law, these guidelines are non-discriminatory and apply to other utility facilities in the right-of-way where applicable.

1.2 Local Laws on Small Cell Infrastructure

The City of New Orleans has multiple local ordinances that apply, or may apply, to the installation of Small Cell facilities in the right-of-way. It is up to the providers to secure all necessary permits before proceeding with installation. Telecommunications utilities with facilities within the right-of-way are governed by the franchise and permit requirements in Chapter 30 of City Code. In addition, any work in the right-of-way which may require excavations requires a permit from the Department of Public Works under Code of Ordinances Chapter 146, Division II, Sec. 146-436. Included in the DPW permit process described in Code Chapter 146, and not covered by these guidelines, are approval requirements for new poles or towers within the right-of-way. Also, any work which necessitates the occupation of the right-of-way on a temporary basis may require a construction zone permit under Chapter 146, Section 583. Finally, as discussed above, Small Cell facilities will require a Small Cell permit under City Code Sec. 30-61, *et. seq.*

2 Adoption

These guidelines are intended to cover the general standards and aesthetics for the design and installation of Small Cell technology in the public right-of-way across New Orleans. They are comprehensive in nature while recognizing the unique characteristics and history of New Orleans. The guidelines cover the different areas of New Orleans while keeping generally applicable standards based on the type of infrastructure installed.

As a result of this comprehensive approach, the guidelines have been drafted with input from a variety of stakeholders. Input was also received from staff of the Mayor's Office of Utilities, Department of Public Works, Department of Safety & Permits, Department of Parks & Parkways, Historic District Landmarks Commission, Vieux Carré Commission, and the City Planning Commission. The guidelines are also the result of the review of information shared by telecommunication providers, technical limitations, and requirements of Small Cell infrastructure standards and practices across the country.

As 5G technology is only just now being deployed across the nation, and laws and regulations are actively being created or modified to address the challenges posed to providers and all levels of government, it may be necessary to periodically update these guidelines. Hence, these guidelines incorporate the currently applicable local and federal policies and regulations and are subject to future change. The applications shall comply with the most current version of guidelines and regulations made available by the City.

In accordance with Sec. 2-1000 of City Code, these guidelines will be discussed at a public meeting held by the Department of Public Works and approved by the City Council.

3 Purpose

3.1 Goals of the Guidelines

The Small Cell Guidelines set forth requirements and specifications for the placement and design of utility infrastructure within the City's public right-of-way (ROW) to address engineering, safety, and aesthetic concerns within the parameters outlined above and consistent with the City's regulatory role over the right-of-way. The guidelines intend to accommodate the functional needs of the cellular infrastructure industry while recognizing the character and function of the City's public space. The City's specific goals of these guidelines include, but are not limited to:

- Avoiding impact on the most important view sheds and vistas within the Vieux Carré; and
- Minimizing the impact on the character of designated districts, including Downtown Development District, historic districts, historic landmarks, and protected open spaces; and
- Protecting access and circulation to buildings and public open spaces; and
- Minimizing visual and physical clutter within the streetscape.

3.2 Areas of Special Interest

The character of New Orleans's streetscape reinforces the importance of the public realm, where the streets, squares, and public spaces are the primary features in the City defined against the background of urban development. The City has designed these areas of special interest within its zoning code, in City plans, and by resolution, such as the Downtown Development District, Vieux Carré, Local Historic Districts, and Undergrounding Districts. These guidelines will detail any special design guidelines that may apply in such areas of the City.

4 Small Cell ROW Application and Permit Process

Prior to placing, installing, modifying, relocating or removing a Small Cell facility or wireless support structure, tower, or pole in the ROW, or to collocating a Small Cell facility on an existing wireless support structure, tower, or pole in the ROW, the operator shall apply for and receive a Wireless Telecommunications Facility Permit (Small Cell Permit) from the City under Code Sec. 30-65.3. All applications will require review to ensure adherence to these guidelines and all other applicable standards, regulations, and laws. Applications that comply with these guidelines and all other applicable standards, regulations, and laws will be processed by City of New Orleans’s Department of Public Works and any other department having jurisdiction over review. The City may require additional information as reasonably necessary to evaluate the application and the impact of the proposed installation(s) on the public health, safety, and welfare or on use or management of the ROW.

Applicants will be notified if their application is not consistent with these guidelines, with reasons why their application is not consistent, and, at such time, the applicant will have an opportunity to revise their application and resubmit.

4.1. Application and Permit Process. Requests to locate Small Cell facilities within the right-of-way generally involve either the collocation of Small Cell facilities in association with existing wireless support structures, towers, or poles within the right-of-way or the installation of a new tower or pole and associated Small Cell facilities. In addition to these main categories, applications are required for the removal of Small Cell facilities and wireless support structures, towers, or poles, as well as the less common Eligible Facilities Request for modification of an existing tower or base station within the right-of-way.

1. Collocation on Existing Support Structure, Tower, or Pole and/or Associated Small Cell Facilities (Type 1)
 - a. Pre-application Meeting
 - i. File Small Cell ROW Permit
 1. Max 60 Day Application Review (see sections 7.3.1 and 7.4.1 for historic district review process)
 - a. App Approved
 - i. 180 Days to Complete Install or Extension
 1. Final Inspection by City agencies
 - a. Inspection Approved
 - i. Complete
 - b. Inspection Denied
 - i. Remedy Issues (back to Final Inspection)
 - b. App Denied
 - i. Remedy Issues (back to File Application)
1. New Wireless Tower or Pole and/or Associated Small Cell Facilities (Type 2)
 - a. Pre-application Meeting
 - i. File Small Cell ROW Permit
 1. Max 90 Day Application Review (see sections 7.3.1 and 7.4.1 for historic district review process)
 - a. App Approved

- i. 180 Days to Complete Install or Extension
 - 1. Final Inspection by City agencies
 - a. Inspection Approved

- i. Complete
- b. Inspection Denied

- i. Remedy Issues (back to Final Inspection)

- b. App Denied
 - i. Remedy Issues (back to File Application)

2. Removal and Replacement of Wireless Support Structure, Tower, or Pole and/or Associated Small Cell Facilities (Type 3)

a. Pre-application Meeting

i. File Small Cell ROW Permit

1. Application Review (see sections 7.3.1 and 7.4.1 for historic district review process)

a. App Approved

- i. 180 Days to Complete Install or Extension
 - 1. Final Inspection by City agencies
 - a. Inspection Approved

- i. Complete
- b. Inspection Denied

- i. Remedy Issues (back to Final Inspection)

- b. App Denied
 - i. Remedy Issues (back to File Application)

3. Eligible Facilities Request (Type 4)

An Eligible Facilities Request (Type 4) is a request to modify an existing tower or base station within the right-of-way constructed for the sole or primary purpose of supporting antennas and other associated facilities for wireless communications services, such that the modification does not “substantially change” the physical dimensions of such tower or base station when collocating new equipment, removing transmission equipment, or replacing transmission equipment.

A substantial modification to a tower or base station within the ROW is defined as follows:

- (1) Increases the height of the structure by more than 10% or more than ten feet, whichever is greater;
 - (a) Changes in height should be measured from the original support structure in cases where deployments are or will be separated horizontally, such as on buildings’ rooftops; in other circumstances, changes in height should be measured from the dimensions of the wireless support structure, tower, or pole, inclusive of originally approved appurtenances and any modifications that were approved prior to the passage of the Wireless Franchise Act.
- (2) It involves adding an appurtenance to the body of the wireless support structure, tower, or pole that would protrude from the edge of the structure by more than six feet;
- (3) It involves installation of more than the standard number of new equipment cabinets for the technology involved, but not to exceed four cabinets; or, for wireless support structures, towers, or poles in the public rights-of-way, it involves installation of any new equipment cabinets on the ground if there are not pre-existing ground cabinets associated with the structure, or else

- involves installation of ground cabinets that are more than 10% larger in height or overall volume than any other ground cabinets associated with the structure; and/or;
- (4) It entails any excavation or deployment outside the current site.

If during the staff review it is determined that substantial modifications are proposed, the applicant will be informed that a Type 1 Application Request will be required.

- a. Pre-application Meeting
 - i. File Small Cell ROW Permit
 - 1. Max 60 Day Application Review (see sections 7.3.1 and 7.4.1 for historic district review process)
 - a. App Approved
 - i. 180 Days to Complete Install or Extension
 - 1. Final Inspection by City agencies
 - a. Inspection Approved
 - i. Complete
 - b.
 - Inspection Denied
 - i. Remedy Issues (back to Final Inspection)
 - b. App Denied
 - i. Type 1 Application

4.1.2 Proof of Agent Designation. If the applicant is serving as an agent of a small wireless operator, the applicant must provide written documentation of the agent designation signed by the operator.

4.1.3 Map. The applicant must include an aerial map showing the location of the proposed or existing support structure to which the small wireless facility is proposed to be attached, or from which a small wireless facility is proposed to be removed.

4.1.4 Elevations and Photo Simulations. For all applications to locate small wireless facilities in the ROW, the applicant shall provide scaled and accurate elevation drawings and photo simulations. Photo simulations are to be taken from at least two reasonable line-of-site locations near the proposed project site. The photo simulations must be taken from the viewpoints of the greatest pedestrian or vehicular traffic. **Any modifications to location must be approved prior to installation by all relevant agencies.**

4.1.5 Consolidated Applications. An applicant seeking to construct, modify, collocate or replace more than one small wireless facility or more than one wireless support structure, tower, or pole within the City may file a consolidated application for multiple small wireless facility requests grouped on a consolidated application only if the application covers substantially the same type of small wireless facilities or substantially the same type of wireless support structures, towers, or poles. (Note: The city may treat each request individually during application review and processing and when issuing a determination or applying these guidelines.)

4.1.6 Site and Other Plans and Structural Calculations. The applicant must include fully dimensioned site plans, plans, and structural calculations that depict any known existing wireless facilities, within three-hundred (300) feet of the proposed facility with all proposed transmission equipment and other improvements, and the legal boundaries of the existing right-of-way

and any associated access and utility easement. Fully dimensioned site plans shall indicate the spacing from existing curb, driveways, sidewalks, light poles and any other poles or appurtenances.

4.1.7 GIS Map, Description of Number and Dimensions of Facilities to be Installed.

The applicant must include a GIS map or location-enabled file (e.g., latitude and longitude, GPS coordinates, etc.) of the small wireless location proposed in the permit application, as well as a full description of the number and dimensions of all small wireless facilities proposed to be installed and the wireless support structure, tower, or pole, either new or existing, to be utilized for each small wireless facility. For all equipment proposed to be installed, the applicant must include: (1) the manufacturer's name and model number; (2) physical dimensions, including without limitation, height, width, depth and weight with mounts and other necessary hardware; and (3) the ambient noise level generated from the equipment, if any.

4.1.8 Confidentiality of Application Materials. The Applicant may designate specific portion of its Application materials as confidential if it reasonably believes that such materials contain proprietary or confidential information whose disclosure thereof will harm its business. The City will treat such materials as confidential and will not disclose them to the extent allowed by Applicable Law.

4.1.9 Right to Reserve Space. The city may reserve space for future public safety or transportation uses in the right-of-way or on a wireless support structure, tower, or pole in a documented and approved plan in place at the time an application is filed. A reservation of space shall not preclude placement of a pole or collocation of a Small Cell facility. If replacement of the wireless support structure, tower, or pole is necessary to accommodate the collocation of the Small Cell facility and the future use, the operator shall pay for and install the replacement, which must accommodate the future use.

4.1.10 Owner's Authorization. For any application to attach a small wireless facility to a wireless support structure, tower, or pole that is not owned by the City, the applicant must submit evidence sufficient to show that either: (1) applicant owns the proposed support structure, tower, or pole; or (2) applicant has obtained the owner's written authorization to file the application.

5 General Guidelines

5.1 General Location Guidelines

5.1.1 Preferred Locations. It is preferred to have Small Cell facilities installed in industrial and/or commercial areas, whenever possible. A facility may be permitted in a location other than a preferred location if the applicant provides evidence showing that:

5.1.1.1 Adequate coverage can be maintained, existing services or capacity can be improved, or new services can be added only if facilities are placed in a non-preferred location; or

5.1.1.2 The proposed facility will meet all applicable requirements for the non-preferred location and will complement the character of the surrounding area.

5.1.2 Non-Preferred Locations. As set forth in Section 30-65-12 et. Seq. of the Ordinance, and further described in these guidelines, the applicant should avoid locating new support structures, towers, or utility poles within residential neighborhoods, designated open space, conservation areas, or Areas of Special Interest.

5.1.3 Avoid Significant Buildings and View Sheds. Small Cell facilities shall not interfere with prominent vistas or significant public view corridors. Small Cell facilities shall not obstruct significant vistas and views in Special Interest Area Districts.

5.1.3.1 Small Cell facilities shall not be located along the front or side boundary lines and shall not interfere with the view sheds of a significant-rated building, a New Orleans Landmark, a National Historic Landmark, or a property individually listed in the National Register of Historic Places.

5.2 Collocation

5.2.1 Collocation Generally. Subject to the provisions of this section, collocation of facilities is generally preferred over new support structures if it is technically feasible and can be accomplished in a way that better complements the character of the surrounding area.

5.2.2 Collocation with non-municipal facilities. Collocation on facilities or support structures owned by parties other than the City of New Orleans is subject to the following:

5.2.2.1 Where an existing facility or support structure can potentially accommodate collocation of a new wireless facility in a technically feasible manner, collocation will be preferred unless:

- The applicant submits clear and convincing evidence supporting the unsuitability of the collocation;
- The owner of the existing facility or support structure submits clear and convincing evidence that they are unable to accommodate the applicant's equipment and cannot be required to cooperate; or

5.2.2.2 Authorization for collocation on a facility or support structure owned by a party other than the City of New Orleans will be voided if the facility or support structure is destroyed, removed, relocated, or replaced, unless:

- The owner of the collocated facility obtains a new right-of-way use permit; or

- The facility or support structure accommodating the collocation is replaced with a facility or support structure comparable in size, mass, appearance, and placement, as determined by the Department of Public Works.

5.3 Location Specifications

5.3.1 Vision Requirements. Facilities and support structures must be located so as not to create a vision hazard at intersections or driveways or obstruct the visibility of any traffic control devices. Equipment near these areas must be placed below 2.5 ft. or above 7 ft.

5.3.2 Obstruction of Traffic. All equipment and support structures are to be installed such that they do not obstruct, impede or hinder vehicular, pedestrian or bicycle travel, including any facilities necessary to meet Americans with Disabilities Act of 1990 along with any updates to the ADA guidelines. A clear pedestrian path shall be maintained at all locations, a minimum width of 4'-0" of clearance shall be maintained at all sidewalks.

5.3.3 Obstruction of Maintenance Activities. To the extent possible, a facility, support structure, tower, or utility pole should be located and designed to avoid interference with right-of-way maintenance activities, such as:

5.3.3.1 Grass mowing, brush collection, tree trimming, and landscaping maintenance;

5.3.3.2 Trash collection;

5.3.3.3 Maintenance of streets, pavement, sidewalks, and bicycle lanes; and

5.3.3.4 Maintenance of other facilities in the rights-of-way.

5.3.4 Alignment. Facilities and support structures, towers, and utility poles are to be located in alignment with existing trees, facilities, support structures, towers, utility poles, and streetlights, and are to be spaced evenly between any of these other objects, to the extent technically feasible.

5.3.5 Frontage. New facilities and support structures, towers, and utility poles are to be located at or near the extension of property lines whenever possible and are not to be located directly in front of a building entrance area or window of existing structures.

5.3.6 Tree Protection. Placement of facilities and support structures, towers and utility poles are prohibited within the critical root zone (CRZ). Additionally, placement of materials and construction activity are prohibited within the CRZ. The CRZ is an equidistant circular area which has a radius calculated at one foot (1') to every one inch (1") diameter of trunk taken at four and one-half feet (4.5') above grade, or is defined as the outer edge of the dripline, whichever distance is furthest.

5.3.7 Minimum Spacing Requirements

5.3.7.1 Minimum spacing between proposed and existing privately-owned Small Cell facilities. The minimum horizontal distance between a new Small Cell facility and any other existing, or permitted but unconstructed, Small Cell facilities on the same side of the right-of-way at the time a complete

application is filed with the city, irrespective of the owners/operators, should generally not be less than 300 linear feet, as measured parallel to the right-of-way, unless otherwise approved by the Director of Public Works or his/her proxy.

5.3.7.2 Spacing between proposed Small Cell facilities and existing publicly owned Small Cell facilities.

New Small Cell facilities shall be located midway between the immediately adjacent existing publicly owned Small Cell facilities on either side of the proposed Small Cell facility to the maximum extent possible.

5.3.7.3 Multiple requests in violation of spacing requirements. If multiple requests are received to install two or more small wireless facilities that would violate the applicable spacing requirements, or to collocate two or more Small Cell facilities on the same existing support structure, tower, or pole, the city may resolve conflicting requests on a “first-to-apply” basis or through whatever reasonable and nondiscriminatory manner it deems appropriate to ensure compliance with the Ordinance and these guidelines.

5.3.7.4 City proposed alternative location for small wireless facilities. The city may propose an alternate location to any proposed location of a new small wireless facility, subject to the following:

5.3.7.5 That the alternate location is within one hundred (100) feet of the proposed location or within a distance that is equivalent to the width of the right-of-way in which the new wireless support structure is proposed, whichever is greater; and

5.3.7.6 The operator may use the alternate location if it has the right to do so on reasonable terms and conditions and the alternate location is technically feasible and does not impose additional costs.

5.3.7.7

Spacing – See Table 5-1. below regarding spacing of support structures to specific right-of-way features and applicable notes.

Table 5-1: Pole Spacing Standards

Object	Required Minimum Spacing
Curb	1.5 ft to face of curb
Mainline Sidewalk	1.5 ft.
Bike Paths	2 ft.
Pavement Edge (unimproved streets)	4 ft.

Residential Driveway	6 ft.
Commercial Driveway	10 ft.
Streetlight	10 ft.
Traffic Signal	10 ft.
Utility Pole	25 ft.
Street Tree	outside CRZ
Building Face	8 ft.
Fire Hydrant	6 ft.
Bike Rack	8 ft.
Bus Stop	8 ft.

Notes:

- 1. Minimum spacing is to nearest face of pole.*
- 2. If an existing pole that violates any of these standards is being replaced, it may remain in the same location, but it may not be placed any closer to any object than existing condition.*
- 3. In certain circumstances, City Engineering may request further spacing than what is noted Examples - driveways with heavy truck use, more sensitive street trees, streets with right-of-way reservations or planned sidewalk installation, etc.*
- 4. Exceptions may be allowed in appropriate circumstances, such as very narrow rights-of-way.*
- 5. New or replacement poles should be placed near property line extensions, whenever possible, and not placed directly in front of building entrances.*

Figure 5-3.1: Freestanding Small Cell in Public Right-of-Way



Freestanding Small Cells shall be located such that they in no way impede, obstruct, or hinder reasonable pedestrian or vehicular travel, affect public safety, obstruct the legal access to or use of the public right of way, violate applicable law, violate or conflict with public right of way design standards, specifications, or design district requirements, violate the Federal Americans with Disabilities Act of 1990, or in any way create a risk to public health, safety, or welfare.

Figure 5-3.2: Freestanding Small Cell Location Between Property and Trees



Figure 5-3.3: Freestanding Small Cell between property lines

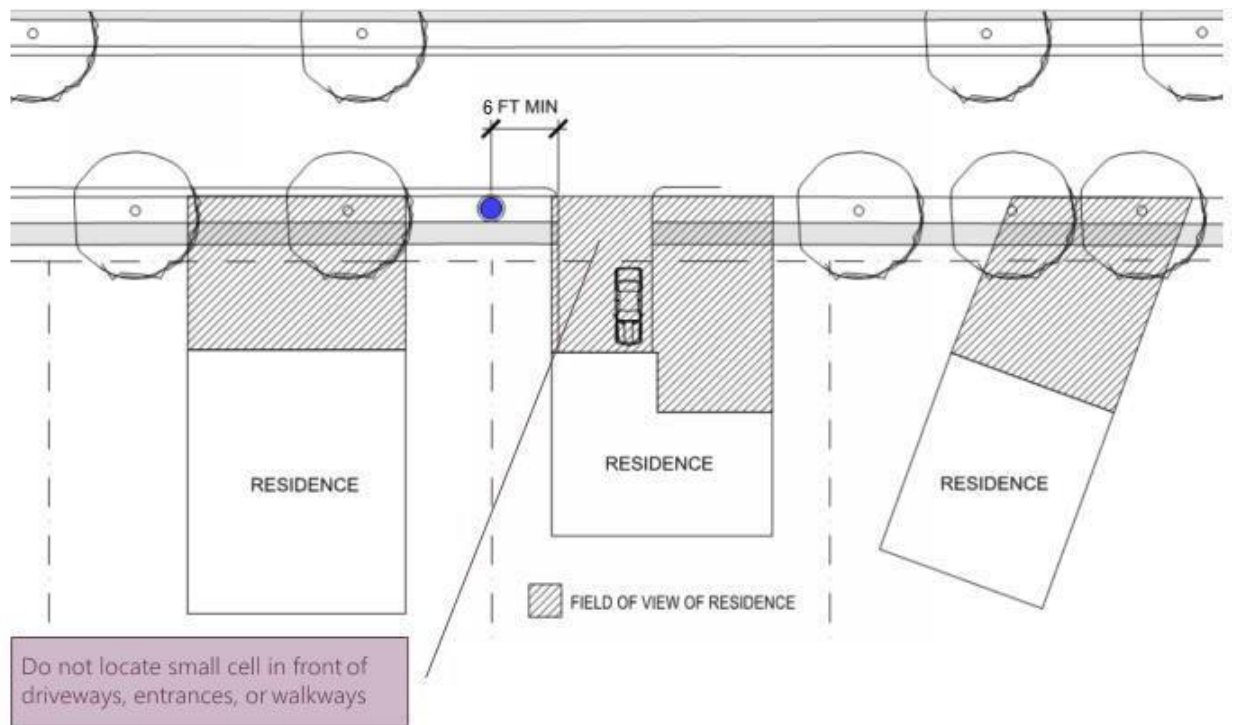
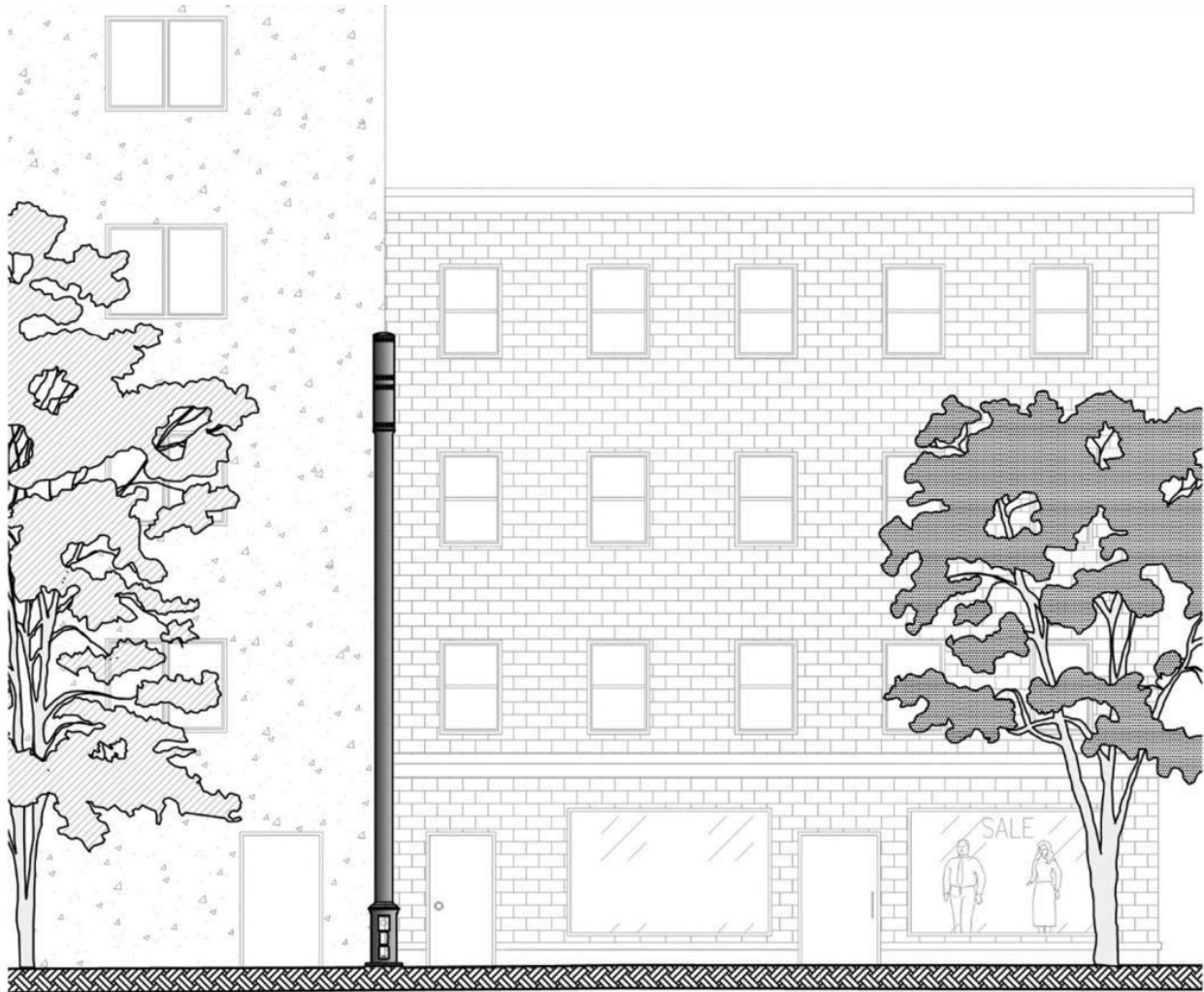


Figure 5-3.4: Small Cell in Commercial Area



5.3.8 Required Setbacks

5.3.8.1 Preferred Alignment. The centerline of new support structures shall be installed in alignment with existing poles where present, or with street trees along the same side of the right-of-way, unless otherwise required in the Context Specific Design Guidelines.

5.3.8.2 Minimum Distance from Travelway. Equipment shall be placed so as not to impede or impair public safety or the legal use of the right-of-way by the traveling public, and in no case shall any portion of new support structure be located less than two feet from the travel way, edge line, face of curb, sidewalk, bike lane, or shared-use path.

5.3.8.3 Minimum Distance from Existing Objects in the Right-of-Way. New small wireless facilities shall be located a minimum of twelve (12) feet from any permanent object or existing lawful encroachment in the right-of-way to allow for access. The Director of the Department of Public Works may grant an exception to this spacing requirement upon clear and convincing evidence that the twelve (12) foot spacing requirement is not technically feasible and that an alternative spacing would not have an adverse impact on public safety, accessibility or other rules or regulations.

5.3.8.4 Minimum Distance from Intersections and Driveway Aprons. Small wireless facilities shall be located a minimum of six (6) feet from driveway aprons. Small wireless facilities shall be located outside of intersection sight distance triangles, whenever possible.

5.3.8.5 Minimum Distance from Street Trees and Protected Trees in the Vicinity. Small wireless facilities shall be sited outside of the critical root zone (CRZ) and canopy drip line of existing street trees and any existing protected trees having a six (6) inch or greater diameter at breast height (DBH) located in the immediate vicinity, including protected trees on private property.

5.3.9 Encroachments Prohibited. No portion of a small wireless facility or small wireless facility cabinet or enclosure may encroach at grade or within the airspace beyond the right-of-way or over the travelway.

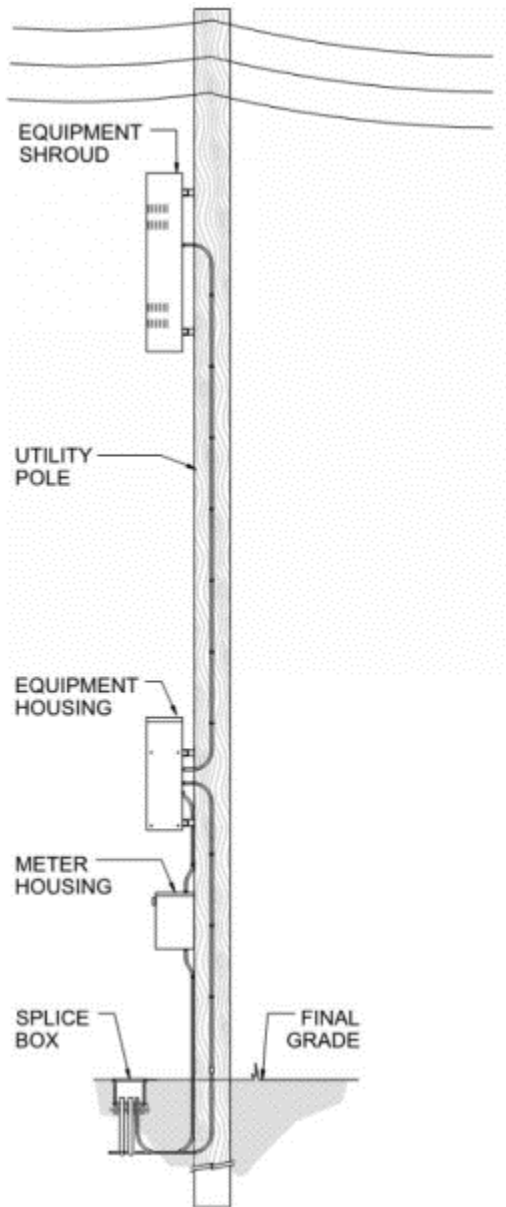
5.4 Height Restrictions and Requirements

5.4.1 Support Structures, Towers, and Utility Poles. The height of a support structure, tower, or utility pole in the right-of-way shall be no more than 10% higher of any pole on the same block as the proposed structure up to a maximum height of 50 feet.

5.4.2 Small Wireless Facility. The height of a small wireless facility in the right-of-way may not exceed 50 feet above ground and is to remain within 10 ft. of the tallest existing support structure, tower, or utility pole that is in place on the same block, excluding a proposed support structure for the new Small Cell facility.

5.4.3 Minimum Height of Wireless Communications Equipment. Equipment mounted to support structures must not interfere with or create a hazard to pedestrian or vehicular traffic and must be a minimum of 12 feet above any pedestrian or bicycle thoroughfare and a minimum of 16 feet above any traffic lane.

Figure 5-4.1: Attachment to Utility Pole



5.5 Environmental Safety

Radio Frequency (RF) Safety. All applicants must provide an affirmative statement that the proposed facilities and equipment comply with all applicable RF safety regulations.

5.6 Notice to Community

5.6.1 Notice Requirements. The Applicant shall be required to provide mailed notice and posted notice as required in this Section.

5.6.2 Mailed Notice. In order to ensure that nearby landowners and other interested person and entities are informed of the filing of an Application, the Applicant shall send the City's "Notice of Application for Installation of Wireless Telecommunications Facility" (the "Notice") using the form provided by the City at the time of filing the Application. The Notice shall be sent via first class U.S. mail to the following persons and/or entities within two (2) days after submitting an application:

5.6.2.1 All landowners whose property is located within a three hundred (300') foot radius of the proposed Wireless Communications Facility or associated Support Structure location, utilizing the names and addresses shown in the Orleans Parish Assessor's records;

5.6.2.2 If the proposed Wireless Communications Facility location falls within three hundred (300') feet of a residential subdivision with a homeowners association, as defined in the Louisiana Homeowners Association Act, Louisiana Revised Statute 9:1141.1 *et seq.*, or a property governed by a condominium association as defined in the Louisiana Condominium Act, Louisiana Revised Statute 9:1121.101 *et seq.*, notice shall be provided to the homeowners association or condominium association.

5.6.2.3 Certification of Mailing. The Applicant shall provide to the City a certification verifying that the Notice was mailed in accordance with this Chapter within seven (7) days of the submission of any Application.

5.6.2.4 Posted Notice. The Applicant shall post a blaze orange placard notice provided by the City at the time of filing the Application at the precise location of the proposed Wireless Communications Facility and associated Support Structure. The posted notice shall be placed at the site location within two (2) days of submitting the Application.

5.6.2.5 Inquiries. Any interested Person or entity seeking information on the proposed Wireless Communications Facility and associated Support Structure may contact the City and/or the Applicant, via-email. Both the Mailed Notice and the Posted Notice required by the previous Sections shall contain a City and Applicant e-mail address to which any interested person or entity may submit its inquiries.

5.6.2.6 Submissions. Within thirty (3) days of the filing of an Application, any interested Person or entity may submit to the City, but e-mail, information pertinent to the Application. The City will consider such information to the extent that is relevant to and consistent with Applicable Law. Provided, however, that any such consideration by the City shall not extend the time period of the City's review of the pending Application. Both the Mailed Notice and the Posted Notice set forth above shall contain a City e-mail address to which any interested Person or entity may submit information permitted by this Section.

6 General Aesthetic Standards

6.1.1 Each new or modified facility must be compatible in size, mass, and color to similar facilities in the immediate area, with a goal of minimizing the physical and visual impact on the area.

6.1.2 The diameter of new support structures is to be minimized such that it is sufficient only for the structural support of the existing and currently proposed attachments.

6.1.3 Antennas located at the top of support structures shall be incorporated into the structure or placed within shrouds of a size such that the antenna appears to be part of the support structure.

6.1.4 All Small Cell equipment is to be shrouded, unless otherwise recommended by the City. Wiring and cabling shall be neat and concealed within or flush to the support structure, ensuring concealment of these components to the greatest extent possible.

6.1.5 No small wireless facility is permitted in any local historic district or Downtown Development District if it will be contrary to or destructive of the character of the district, without the approval of the applicable departments, board or commissions having jurisdiction, if any.

6.1.6 Noise. Facilities must be constructed and operated in a manner that minimizes noise that is audible as provided in City Code.

6.1.7 Lighting. Facilities must not be illuminated, except in accordance with state or federal regulations or if incorporated as part of a streetlight pole.

6.1.8 Signage Prohibited. Signage is not permitted except to comply with FCC, State or City regulations to provide safety warning or emergency contact information. This prohibition notwithstanding, the collocation of existing City way-finding signage may be required and/or approved.

6.1.9 Trees. Tree “topping” or improper pruning of trees within the right-of-way is prohibited. Any proposed pruning of trees, shrubs, or other landscaping already existing in the right-of-way must be noted in the application and approved separately by permit approved by the Department of Parks and Parkways. Any such tree work shall be performed by a Louisiana licensed arborist and subject to other review, input, and requirements of the Department of Parks and Parkways. Installation of facilities or poles is prohibited within the Critical Root Zone (CRZ).

6.1.10 Pole Type. New or replacement poles shall match existing pole types on the same block, unless otherwise approved by the Director of the Department of Public Works.

6.1.11 Frequency of Installations. Small Cell facilities are to be spaced appropriately to maintain aesthetics of the streetscape. Spacing in Special Interest Areas may be greater than in typical areas of the City. The Director of the Department of Public Works may approve alternative spacing at his or her discretion. See Table 6-1 for general spacing guidelines.

Table 6-1: Permissible Spacing and Frequency of Installations

Blockface Length Intervals¹	Outside Areas of Special Interest	Inside Areas of Special Interest	Limit per Carrier per Block⁴
Number of Small Cell Facilities Permitted per Blockface²	Minimum Distance between Facilities on same Blockface³	Number of Small Cell Facilities Permitted per Blockface	Minimum Distance between Facilities on same Blockface
0'-150'	N/A	1	1
151'-300'	N/A	1	1
301'-450'	60'	1	1
451'-600'	60'	2	1
601'-750'	60'	2	2
Over 750'	60'	2	2

¹Block lengths should be measured along the edge of curb between the edge line extended of adjacent intersecting streets.

²This is inclusive of all types of installations and regardless of carrier.

³In other words, the minimum distance between two facilities sharing the same side of the block. Distance should be measured in a linear fashion along the edge of curb between the two facilities' center points.

⁴A block is defined as two opposing block faces.

7 Guidelines Regarding Areas of Special Interest

The design and character of the City of New Orleans right-of-way is defined by a variety of interconnected factors—the most predominant are the functional classification of the roadway within the right-of-way and the land uses and zoning districts present directly adjacent to the right-of-way. These variables influence the amount of space available in the right-of-way outside of the travel lanes for elements such as sidewalks and shared-use paths, street trees, streetlights and utility infrastructure, as well as the aesthetic qualities of these elements.

The unique environmental aesthetics of each area, as well as the characteristics of the right-of-way itself must be taken into consideration in the deployment of small wireless facilities and supporting towers and poles. These facilities must blend seamlessly into the surrounding context. Within the City of New Orleans there are several types of Special Interest Areas, each of which have unique boundaries, characteristics, and regulations. These districts are defined below in Sections 7.1. and 7.6.

In addition to the General Guidelines described in Chapter 5 and the General Aesthetic Standards described in Chapter 6, the following Context Specific Guidelines must be met. Where conflicts exist between the guidelines, the Context Specific Guidelines shall prevail.

7.1 Definition of Areas of Special Interest

With respect to these guidelines, Areas of Special Interest shall be defined and include the following:

7.1.1 Historic Districts under the jurisdiction of the Historic District Landmarks Commission and the Vieux Carré Commission

7.1.2 Historic Landmarked Properties

7.1.3 Areas included within the Downtown Development District

7.1.4 Undergrounding Districts

7.1.5 Areas under the jurisdiction of the Department of Parks and Parkways

7.2 General Guidelines for Areas of Special Interest

7.2.1 Small wireless facilities shall not adversely impact the unique characteristics of any Area of Special Interest.

7.3 Historic District Landmarks Commission Districts

According to the HDLC Design Guidelines, modern mechanical equipment is a necessity of modern life. However, the design and location of equipment can have a significant negative impact on the historic integrity of a building and its surrounding area. The following guidelines for the installation of Small Cell infrastructure within the boundaries of the New Orleans and Central Business District Historic District

Landmarks Commission have been compiled to assist vendors proposing to install such equipment on the public right-of-way within the historic districts.

The HDLC has jurisdiction over 18 local historic districts, each with their own distinctive character. The design guidelines below are intended to assist vendors in the process of planning their proposed installations while respecting the architectural significance and ambiance of these sensitive areas. All small wireless facility proposals should be submitted with great care to protect the existing urban fabric.

7.3.1 General Guidelines in Historic District Landmarks Commission Districts

- The HDLC will review and comment on all applications for small wireless facilities submitted to the Department of Safety and Permits located within the boundaries of the 18 local historic districts or adjacent to an individually landmarked property (see figure 7-6.19).
- To the extent technically feasible, submittals within the boundaries of the Historic District Landmarks Commission historic districts must include **a comprehensive plan for complete coverage of the historic district.**
- The HDLC encourages vendors to utilize or replace existing wireless towers when feasible.
- The total number of proposed new facilities by each vendor shall be minimized to the greatest extent possible.
- Within one area all small wireless facilities shall be of uniform design, even though there may be variation in design dimensions when required.
- When new small wireless facilities are proposed, they shall relate to the design intent of the existing infrastructure including street lighting and traffic signal equipment. For example, in areas where wood telephone poles are common, it is feasible to install new wood poles. If metal decorative streetlights exist, new towers shall relate in terms of color and material.
- Towers shall be designed in such a way as to minimize their visual obtrusiveness. For example, slender, tall towers are preferable to short, wide towers.
- Proximity to existing building components such as overhangs, balconies and galleries should be considered.
- Care should be taken to install new small wireless facilities where existing vertical infrastructure exists. New towers or poles on neutral grounds are not generally preferred.
- Locations of equipment must be sensitively located so as not to violate significant view sheds/proximity to significantly rated buildings.
- Uncluttered, or minimally cluttered, view sheds should be protected by locating proposed new facilities elsewhere.
- Small wireless facilities should be located away from intersections whenever possible to avoid damage from turning vehicles and to diminish additional corner street clutter.
- Location of equipment must comply with all Americans with Disability Act (ADA) requirements for accessibility.

- Repairs and replacement of sidewalk materials by proposing vendor, whether it happens to be brick, stone or concrete, will match the material that is disturbed as part of the antennae installation.
-

7.3.2 Installation Type Preferences

- Most Preferred– Collocations or New Poles Replacing Existing
 - The most preferred installation type in an HDLC area is a collocation of an antenna and associated small wireless facilities on or within an existing privately or publicly owned utility pole, or on a new pole replacing an existing privately owned utility pole.
 - The second most preferred installation type in the Historic District is a collocation of an antenna on an existing privately owned utility pole with Small Cell facilities enclosed in a ground mounted cabinet.
- Least Preferred – New Poles Not Replacing Existing
 - The least preferred installation type in an HDLC area is a new pole that does not replace an existing pole. The proliferation of utility poles in New Orleans’ Special Interest Areas is strongly discouraged as it negatively impacts the viewsheds and quality of life.
- Prohibited – Collocation on Historic Poles
 - Existing decorative light poles in an HDLC area are ineligible for collocations of small wireless facilities due to the design aesthetics and structural capacity of these fixtures. Any modifications to the existing decorative streetlights and poles will be inconsistent with the design of the existing fixtures. However, new poles may be designed to replace existing poles for collocations as described above.

7.3.3 Installation Details and Specifications – Collocation of Small Wireless Facilities

- Use of Existing Decorative Pedestrian-Scaled Streetlights
 - Not permitted.
- Use of Post Top Streetlights
 - Existing city-owned streetlights with luminaires centered on the top of the pole are not engineered to support small wireless facilities. Request for collocations to these streetlights will not be permitted.
- Use of Bracket Arm Streetlights

- Refer to General Design Guidelines.
- Color of all small wireless facility shrouds, enclosures and cabinets shall match the color of the existing decorative light poles in the Historic District or as otherwise approved by HDLC.
- Use of Privately Owned Utility Poles
 - Refer to General Design Guidelines Sections 5 and 6.

7.3.4 Installations Details and Specifications – New Small Wireless Facilities

- Siting of New Small Wireless Facilities
 - New small wireless facilities should be sited in alignment with other existing poles on the same side of the right-of-way and aligned as close as practicable with adjacent side property lines or with shared wall locations in adjacent multi-tenant structures.
 - In no case shall a small wireless facility be sited directly in front of an adjacent building entrance, door, or storefront.
 - Special care should be taken to avoid siting small wireless facilities adjacent to business signs.
 - Special care should be taken to avoid siting small wireless facilities adjacent to balconies, galleries, courtyards or other outdoor habitable space.
- Small Wireless Facility Height
 - New small wireless facilities and antennas should be no taller than functionally necessary and coordinate with the height of existing poles in the same right-of-way to the maximum extent practicable. In no case shall the overall height exceed the height requirements of Section 5.4.
- Color
 - Color for new poles, antenna shrouds, pole mounted equipment, and equipment cabinets within a transformer base shall match the color of the decorative light poles in the historic district or as otherwise approved by HDLC.

7.3.5 Ground Mounted Small Wireless Equipment Details and Specifications

- Maximum Permitted Height of Ground Mounted Equipment Cabinets
 - The maximum permitted height for ground mounted equipment cabinets shall not exceed three (3) feet as measured from established grade at the foundation/pad.

- Siting of Ground Mounted Small Wireless Equipment Cabinets
 - Ground mounted equipment cabinet locations will be reviewed on a case-by-case basis to determine whether the proposed location is appropriate for the context of the historic district.
- Color
 - Color for all ground mounted equipment cabinets shall match the color of the existing light poles or infrastructure in the historic district or as otherwise approved by HDLC.

7.4 Vieux Carré Historic District

According to the VCC Design Guidelines, modern mechanical equipment is a necessity of modern life. However, the design and location of equipment can have a significant negative impact on the historic integrity of a building and its surrounding area. The following guidelines for the installation of Small Cell infrastructure within the boundaries of the Vieux Carré have been compiled to assist future vendors proposing to install such equipment within the district to readily understand the various requirements and constraints in order to keep the process as transparent and streamlined as possible.

7.4.1 General Guidelines in the Vieux Carré Historic District

7.4.1.1 Installations within the area under the jurisdiction of the Vieux Carré Commission

- Small wireless facilities located within the boundaries of the Vieux Carré Commission must use the current pole design approved by the VCC.
- Design details and specifications must be submitted for staff and Architectural Committee review and then forwarded to the Commission for review for a non-binding recommendation prior to issuing requisite permits for installation.
- Submittals within the boundaries of the Vieux Carré Commission historic district must include a **comprehensive plan for complete coverage of the VCC area**, with a maximum number of antennae anticipated for future installations.
- Small wireless facilities shall not be located along the front or side boundary lines and shall not interfere with the view sheds of a purple-rated building or open space.

7.4.1.2 Installations within the greater Vieux Carré Historic District

- Submittals within the boundaries of the Vieux Carré historic district must include a **comprehensive plan for complete coverage of the French Quarter**, with a maximum number of antennae anticipated for future installations.
- The network of antennae must be of uniform design, even though there may be variation in design dimensions when required.
- Repairs and replacement of sidewalk materials by proposing vendor, whether it happens to be brick, stone or concrete, will match the material that is disturbed as part of the antennae installation.

- Location of equipment must comply with all Americans with Disability Act (ADA) requirements for accessibility.
- Locations of equipment must be sensitively located so as not to violate significant viewsheds/proximity to significantly rated buildings and spaces.
- Small wireless facilities should be designed and located to replace another existing “vertical structure”. Installations of street signage and other equipment are reaching saturation point in a pedestrian oriented neighborhood. Any additional antennae proposals should be submitted with great care.
- To the extent it is technically feasible, small wireless facilities should be designed to facilitate multiple vendors within one tower, so long as the design of such a pole is consistent with the character of the district and approved by the Director of the VCC. It would be very inappropriate to have multiple towers of various carriers in one location.
- Small wireless facilities should be located away from intersections whenever possible to avoid damage from turning vehicles and to diminish additional corner street clutter.
- Uncluttered, or minimally cluttered, viewsheds should be protected by locating proposed new equipment elsewhere.
- Proximity to existing building components such as overhangs, balconies and galleries should be considered.

7.4.2 Location Preferences for Installation of Small Wireless Facilities

7.4.2.1 Prohibited Locations

- Locations along the front or side boundary lines and within the view sheds of purple-rated buildings or open spaces is prohibited.
- Jackson Square and its surrounding corridor is the historic core of the Vieux Carré historic district. As such, the aesthetic character of this area in the Vieux Carré has been carefully designed and regulated to maintain the historic and cultural importance of the Vieux Carré to the City.
- The boundary of the Jackson Square corridor is defined by the rights-of-way of these streets: Decatur Street, St. Peter Street, Royal Street, and St. Ann Street, as highlighted in red in Figure 7-4.1 below.
- The area available within the right-of-way for infrastructure is very limited, and where streetlights and other vertical infrastructure is present, it is designed at an appropriate scale and aesthetic quality fitting to this unique area.

Figure 7-4.1 Boundaries of Jackson Square Corridor



7.4.3 Installation Type Preferences

- Most Preferred – Collocations or New Poles Replacing Existing
 - The most preferred installation type in the VCC area is a collocation of an antenna and associated small wireless facilities on or within an existing privately or publicly owned utility pole, or on a new pole replacing an existing privately or publicly owned utility pole.
- Least Preferred – New Poles Not Allowing Collocation
 - The least preferred installation type in the VCC is a new pole that replaces an existing poled but does not include or make possible the collocation of additional wireless equipment.
- Prohibited Installation Types – New Poles Not replacing Existing or Collocation on Historic Poles
 - Installations of new small wireless facilities that do not replace an existing pole are prohibited. The proliferation of utility poles in New Orleans’ Special Interest Areas is strongly discouraged as it negatively impacts the viewsheds and quality of life.
 - Existing decorative light poles in the Vieux Carré area are ineligible for collocations of small wireless facilities due to the design aesthetics and structural capacity of these

fixtures. Any modifications to the existing decorative streetlights and poles will be inconsistent with the design of the existing fixtures. However, new poles may be designed to replace existing poles for collocations as described above.

7.4.4 Installation Details and Specifications

- Refer to current VCC approved design
- Siting of New Small Wireless Facilities
 - New small wireless facilities should be sited in alignment with other existing poles on the same side of the right-of-way and aligned as close as practicable with adjacent side property lines, or with shared wall locations in adjacent multi-tenant structures.
 - In no case shall a small wireless facility be sited directly in front of an adjacent building entrance, door, storefront, window, or gate.
 - Special care should be taken to avoid siting small wireless facilities adjacent to balconies, galleries, courtyards or other outdoor habitable space.
- Small Wireless Facility Height
 - Refer to current pole design specifications approved by the VCC.
- Color
 - Color for new Small Cell facilities including antenna shrouds, pole mounted equipment, and equipment cabinets within a transformer base shall match the color of the decorative light poles in the historic district or as otherwise approved by VCC.

7.5 Department of Parks and Parkways

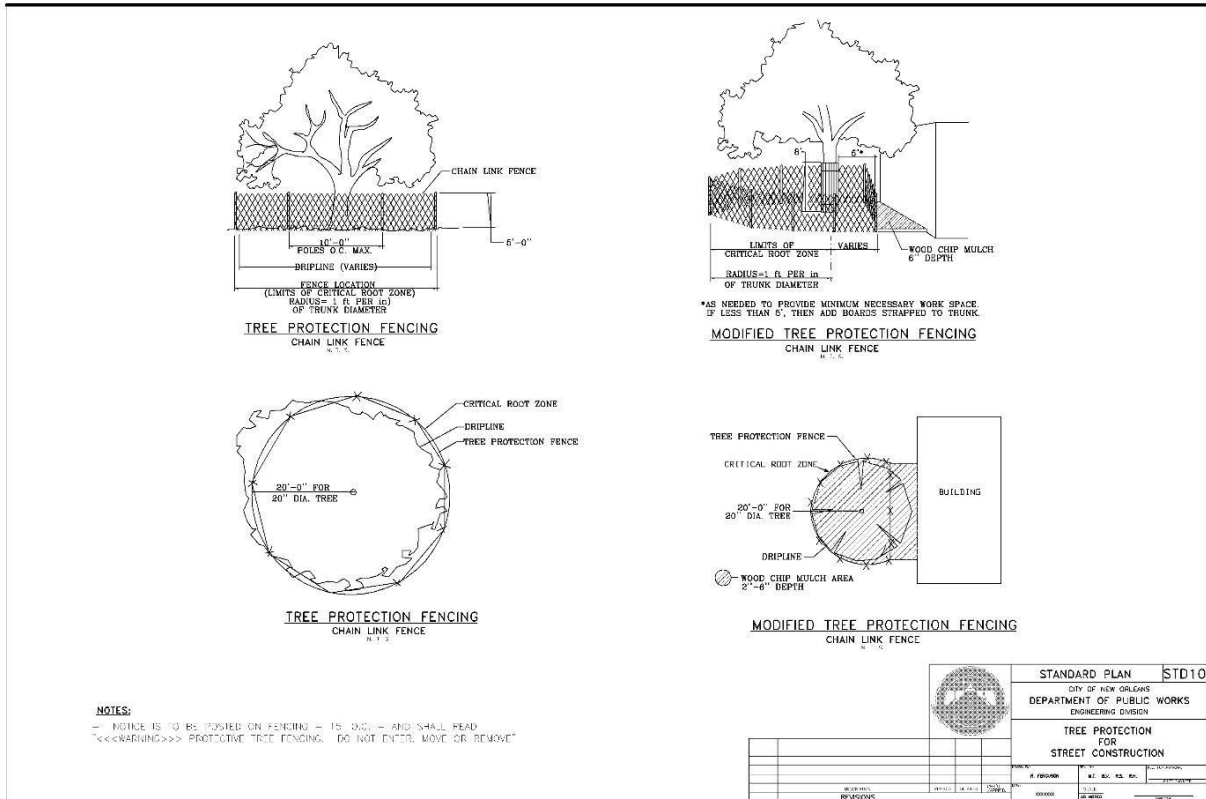
The Department of Parks and Parkways (PKW) has developed guidelines for landscape protection and installation. These guidelines can be viewed at <https://nola.gov/parks-and-parkways/design-and-construction-industry-guidelines/>.

7.5.1 Tree and Landscape Protection Requirement

- All small cell facility installations must comply with PKW Section 01 56 39 *Temporary Tree and Plant Protection*.
 - Installation of small cell facilities are prohibited within the critical root zone (CRZ) of existing trees.
 - Materials storage and construction activity are prohibited within the CRZ.

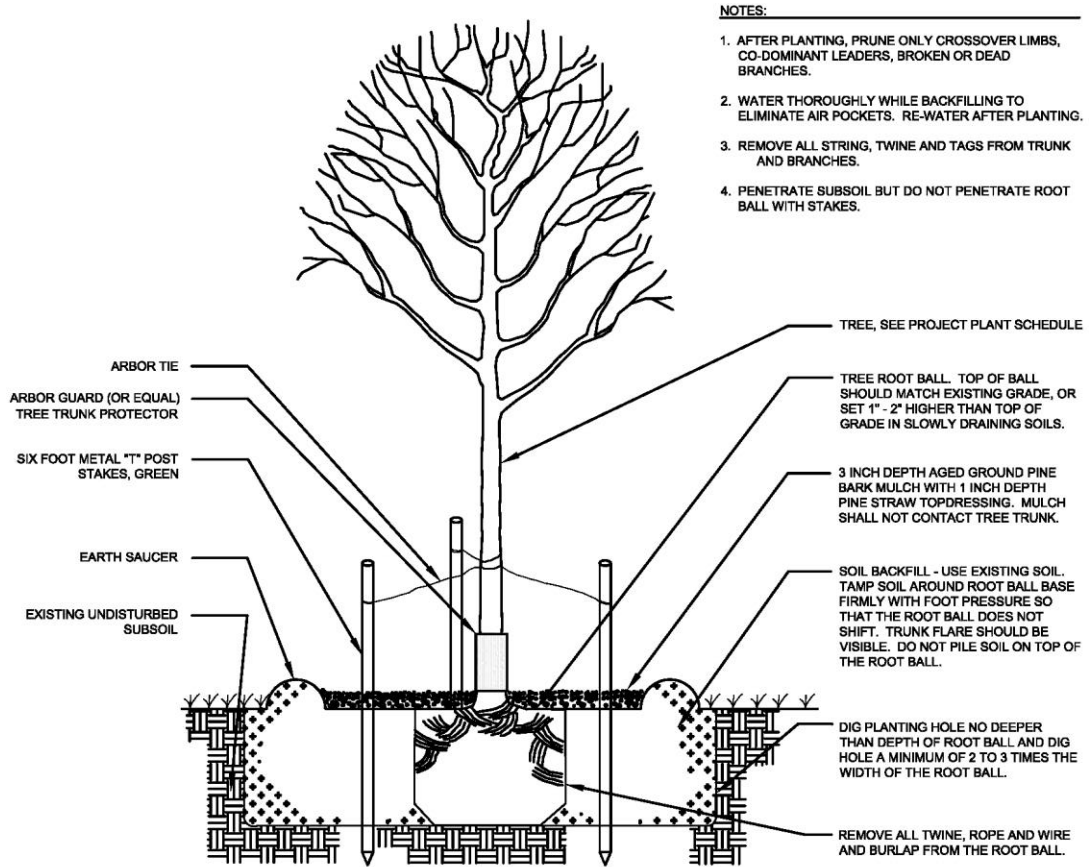
- All pruning or other tree work requests are subject to approval by PKW and must be completed by a Louisiana licensed arborist.
- Protection for city trees in the immediate vicinity of the small cell facility installation must follow the PKW guidelines.

Figure 7-5.1: STD10 – Tree Protection



- All landscape features disturbed by small cell facility installation must be restored by the contractor to the satisfaction of PKW.
 - All replacement plantings must follow PKW Section 32 90 00 *Planting*.
 - All replacement plantings must include a one-year watering schedule and warranty.
 - Tree installations shall follow the PKW Tree Planting Detail.

Figure 7-5.2: Tree Planting Detail



- NOTES:**
1. AFTER PLANTING, PRUNE ONLY CROSSOVER LIMBS, CO-DOMINANT LEADERS, BROKEN OR DEAD BRANCHES.
 2. WATER THOROUGHLY WHILE BACKFILLING TO ELIMINATE AIR POCKETS. RE-WATER AFTER PLANTING.
 3. REMOVE ALL STRING, TWINE AND TAGS FROM TRUNK AND BRANCHES.
 4. PENETRATE SUBSOIL BUT DO NOT PENETRATE ROOT BALL WITH STAKES.

TREE PLANTING DETAIL

N. T. S.

7.5.2 Turf

- In the event existing turf is damaged as a result of small cell facility installation, it is the responsibility of the contractor to restore and maintain the turf in accordance with PKW Section 32-92-23 *Sodding*.

7.5.3 Prohibited installations

- Installation of new poles on neutral grounds, parks and historic plazas will only be approved in instances where alternative options do not exist.
 - In any such case, collocation on an existing pole or replacement of an existing pole is the preferred option.

- Installation of small cell facilities must not interrupt important view sheds in parks, neutral grounds or sidewalk planting strip rights-of-way.

7.5.4 Aesthetic requirements. All small cell facility components must be designed in a scale, color and style appropriate for the surrounding landscape, subject to approval by PKW.

7.6 Special Interest Area Maps

7.6.1 Historic District Landmarks Commission Historic Districts

Figure 7-6.1 Boundaries of Algiers Point Historic District



Figure 7-6.4 Boundaries of Carrollton Historic District

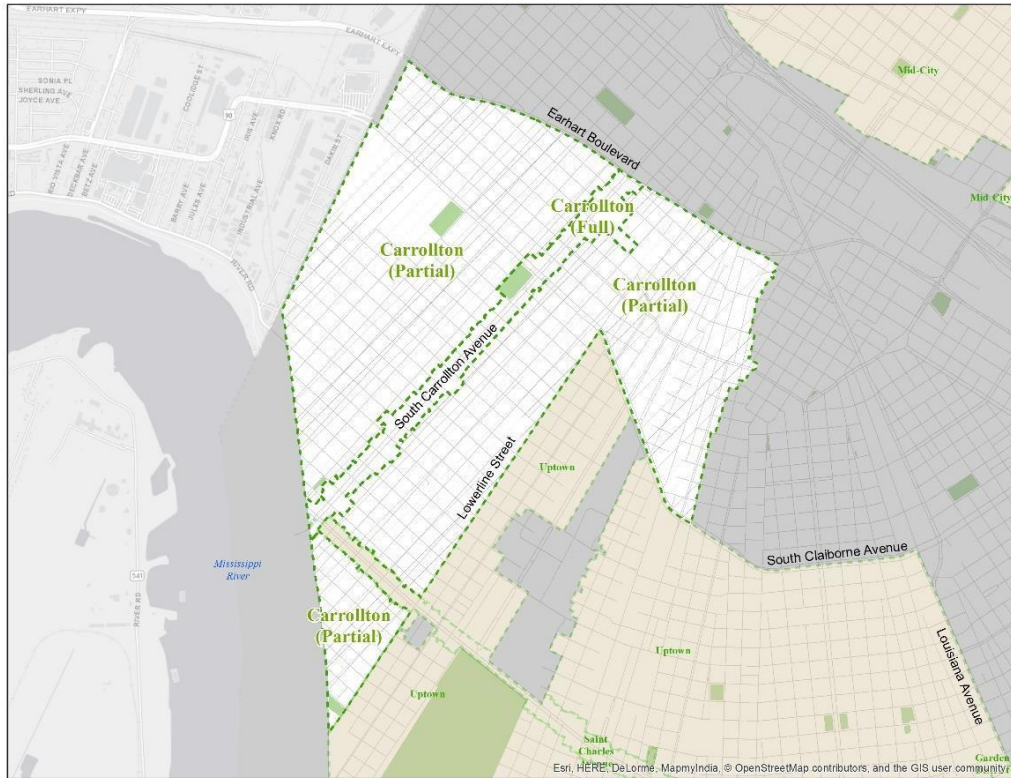


Figure 7-6.5 Boundaries of Esplanade Ridge Historic District

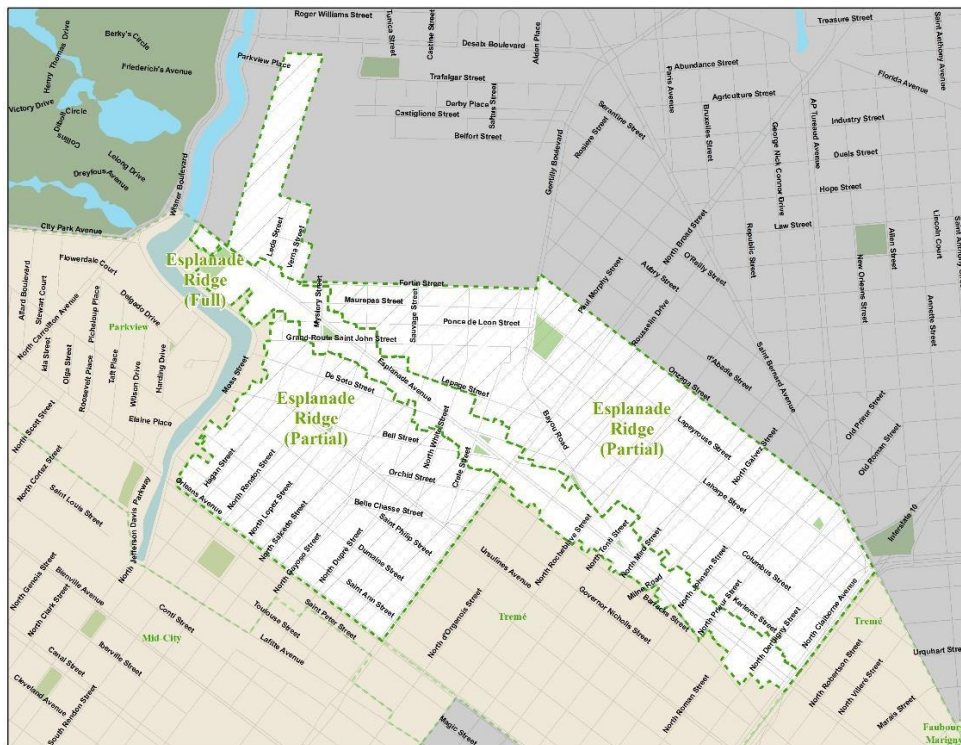


Figure 7-6.6 Boundaries of Garden District Historic District

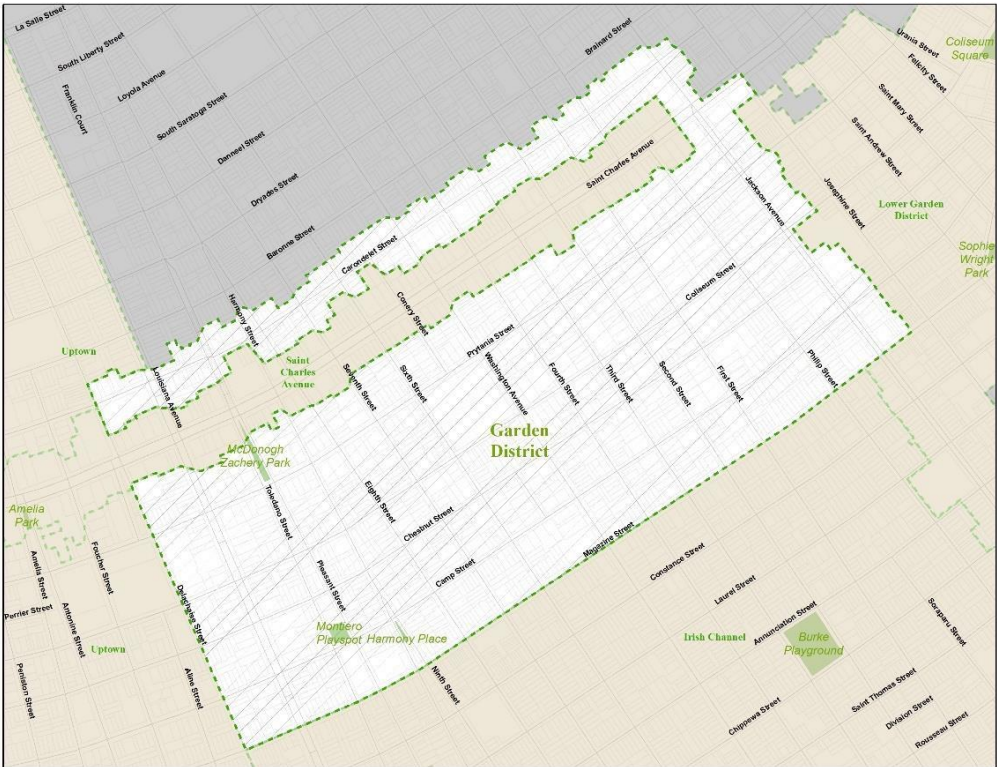


Figure 7-6.7 Boundaries of Holy Cross Historic District



Figure 7-6.8 Boundaries of Irish Channel Historic District



Figure 7-6.9 Boundaries of Lafayette Square Historic District



Figure 7-6.10 Boundaries of Lower Garden District Historic District



Figure 7-6.11 Boundaries of Marigny Historic District

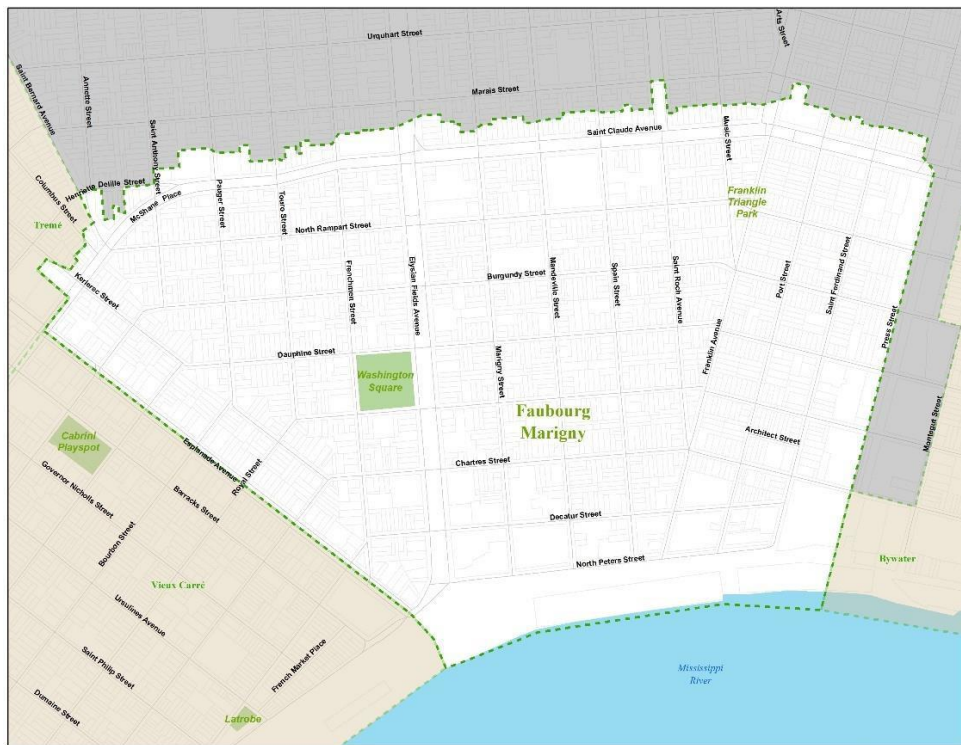


Figure 7-6.12 Boundaries of Mid-City Historic District

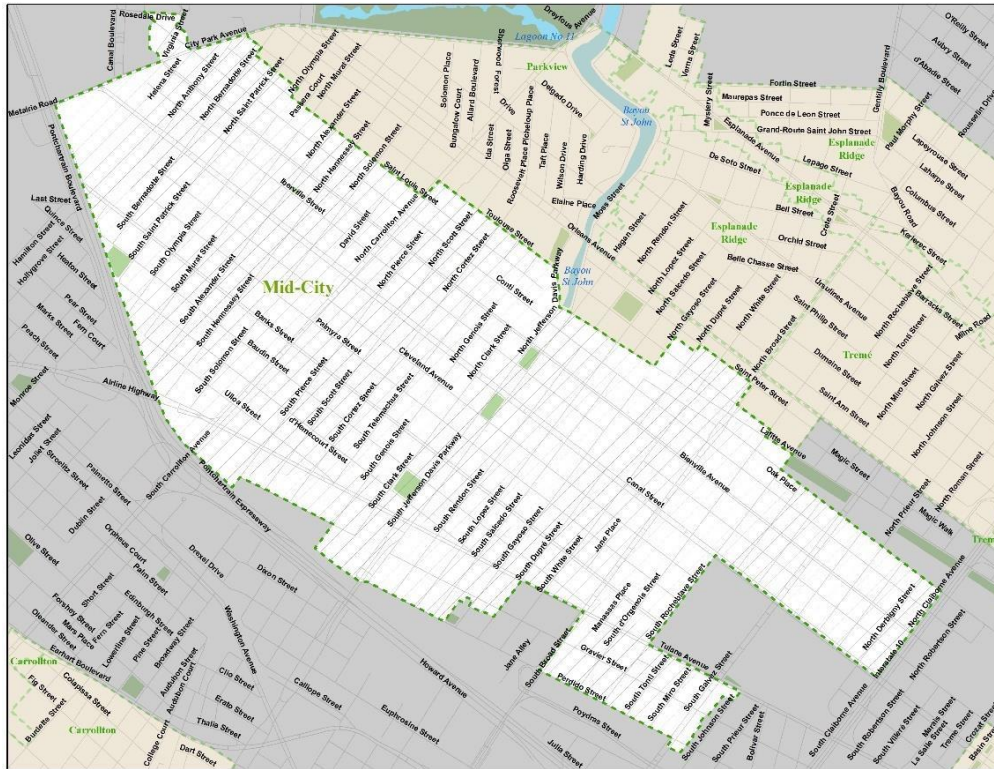


Figure 7-6.13 Boundaries of Parkview Historic District



Figure 7-6.14 Boundaries of Picayune Place Historic District



Figure 7-6.15 Boundaries of Saint Charles Avenue Historic District

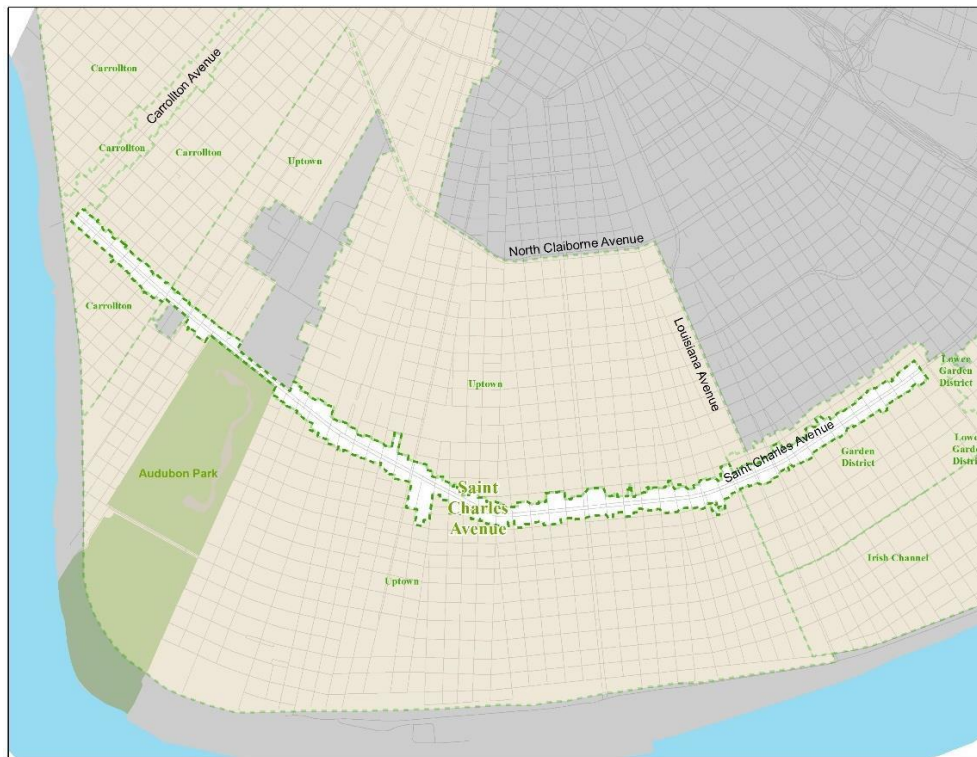


Figure 7-6.16 Boundaries of Tremé Historic District



Figure 7-6.17 Boundaries of Uptown Historic District

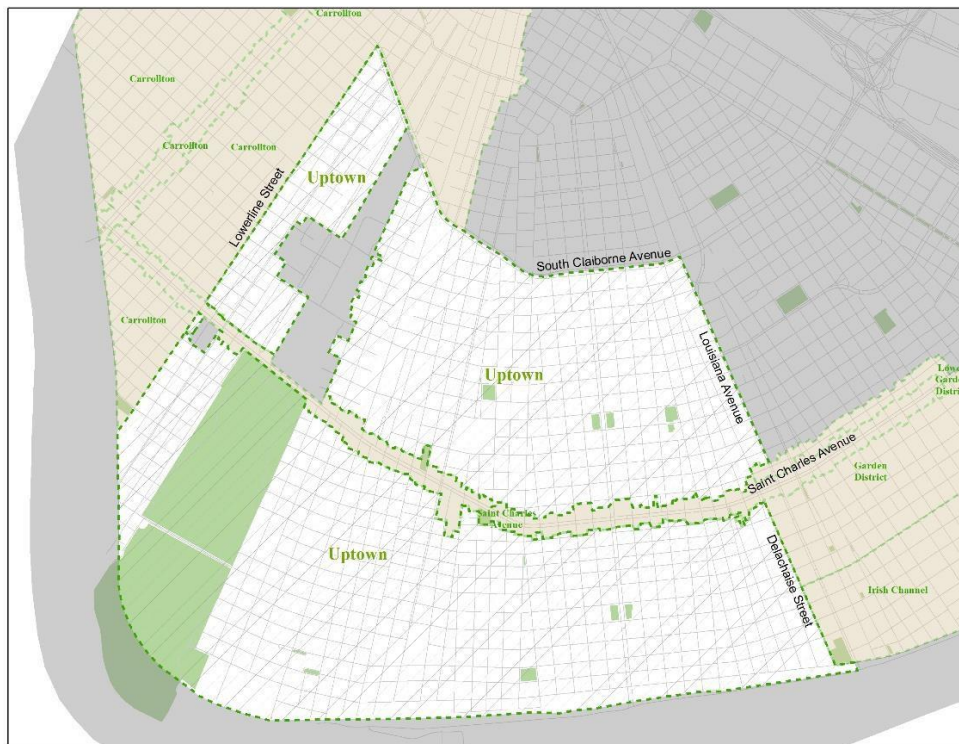


Figure 7-6.18 Boundaries of Warehouse District Historic District



7.6.2 Historic District Landmarks Commission Individual Landmarks

[ADD MAP]

7.6.3 Vieux Carré Commission Historic District

Figure 7-6.20 Boundaries of Vieux Carré Commission Historic District



7.6.4 Downtown Development District

Figure 7-6.21 Boundaries of Downtown Development District



8 General Requirements for Small Cell Equipment

8.1 Wireless Support Structure Design Specifications

8.1.1 Pole Specifications

- All new wireless support structures shall be constructed of solid hot-dipped galvanized steel and be round in shape, with a smooth pole shaft.
- Wireless support structures may utilize cylindrical poles tapered in diameter or poles having a consistent outside diameter, unless otherwise approved by the Director of the Department of Public Works.

8.1.2 Transformer Base

- Any new wireless support structures utilizing a transformer base shall use a one-piece cast aluminum alloy transformer base in a breakaway design, consistent with specifications of the City of New Orleans or as designed by a professional engineer licensed and registered in the State of Louisiana, and subject to the Department of Public Works review and approval.

8.1.3 Foundation

- All new wireless support structures must be supported with a pre-cast concrete foundation, a poured reinforced concrete foundation, or a direct-in-bed pole all of which must be, Stamped, sealed and signed by a professional engineer licensed and registered in the State of Louisiana and subject to the Department of Public Works review and approval.
- Anchor bolts must be constructed from high strength steel per City of New Orleans Standard [insert standard here] and in a length and diameter determined, stamped, sealed and signed by a professional engineer licensed and registered in the State of Louisiana, and subject to review and approval by the Department of Public Works.
- All foundations must be flush at grade and/or concealed from public view, with an appropriate pole boot or cover powder coated, painted, or otherwise fabricated to match the pole color.

8.1.4 Color

- Color for all wireless support structures and bases shall be as prescribed in the Context Specific Design Guidelines.

8.2 Antennas

8.2.1 Maximum Size

- Each antenna shall be located entirely within a shroud enclosure of not more than six (6) cubic feet in volume.
- In no case shall the maximum diameter of the shroud be wider than one-and-one-half times the diameter of the top of the pole.

- Where maximum shroud diameter exceeds diameter of the top of the pole, the shroud shall be tapered to meet the top of the pole.

8.2.2 Mounting Location

- Unless otherwise required by the Context Specific Design Guidelines, all antenna shall be mounted to the top of the wireless support structure pole, aligned with the centerline of the structure.

8.2.3 Design Specifications

- Shape. Antennas shall be generally cylindrical in shape.
- Enclosure. Antenna shall be completely housed within a cylindrical shroud that can accept paint to match the wireless support structure.
- Color. Color for all antennas and shrouds shall match the color of the wireless support structure as prescribed in the Context Specific Design Guidelines.

8.3 Associated Small Cell Facilities and Equipment.

8.3.1 Maximum Size

- Exclusive of the antenna, all wireless equipment associated with the Small Cell facility shall not cumulatively exceed twenty-eight (28) cubic feet in volume. The calculation of equipment volume shall not include electric meters, concealment elements, telecommunications demarcation boxes, grounding equipment, power transfer switches, cut-off switches, and vertical cable runs for the connection of power and other services.

8.3.2 Encroachments Prohibited

- No portion of a wireless support structure or Small Cell facility cabinet or enclosure may encroach at grade or within the airspace beyond the right-of-way or over the travelway.

8.3.3 Screening and Installation Location. All Small Cell facilities, associated equipment and cabling shall be completely concealed from view within an enclosure, and may be installed in the following locations:

- Within an equipment enclosure mounted to the wireless support structure;
- Within an equipment cabinet integrated within the transformer base of a new wireless support structure; or
- Within a ground-mounted cabinet physically independent from the wireless support structure.

8.3.4 Color

- For all Small Cell facilities and enclosures/cabinets attached to wireless support structures or integrated within the base shall match the color of the associated wireless support structure as prescribed in the Context Specific Design Guidelines.
- Color for all ground-mounted Small Cell facilities and cabinets shall be as prescribed in the Context Specific Design Guidelines.

8.4 Small Cell Facilities Mounted to Wireless Support Structures

8.4.1 Minimum Mounting Height

- All Small Cell facilities mounted to wireless support structures shall provide a minimum clearance of 10 feet above established grade. Associated equipment such as things meters, disconnects, and other utility attachments will not be included in this requirement but must meet all other permitting and code requirements.

8.4.2 Maximum Permitted Protrusion of Enclosure from Wireless Support Structure Pole

- Small Cell equipment enclosures shall not protrude more than eighteen (18) inches beyond the face of the pole to the outermost portion of the enclosure.
- Small Cell equipment enclosures should be installed as flush to the wireless support structure pole as practical. In no case shall an enclosure be installed more than four inches from the wireless support structure pole.

8.4.3 Required Enclosure Mounting Location

- All Small Cell facilities and equipment enclosures shall be mounted on the side of the pole opposite the direction of vehicular traffic of the adjacent roadway. Enclosures shall extend perpendicular from the pole and parallel to the right-of-way.

8.4.4 Required Arrangement of Multiple Small Cell Facility Cabinets

- All pole-mounted equipment must be installed as flush to the pole as possible. Where multiple enclosures are proposed on a wireless support structure pole, the enclosures shall be grouped as closely together as possible on the same side of the pole.

8.4.5 Design Specifications

- Installations shall be designed and constructed to utilize the existing design language of the surrounding location and minimize impact upon the existing design landscape as much as possible. Wherever possible installations shall fully integrate carrier equipment into existing structure elements.
- Small Cell equipment enclosures shall be cylindrical or rectangular in shape and should generally be no wider than the maximum outside diameter of the pole to which it is attached, to the maximum extent possible.
- Attachment. Through-bolting is allowed on replacement or new infrastructure expressly design for such attachment styles however is prohibited on any attachments to existing infrastructure not designed for through-bolt attachment types. New wireless support structures may utilize mounting brackets in accordance with the maximum horizontal offset requirements. Care should be taken to integrate the mounting hardware into the enclosure design. All straps and attachments shall be painted to match the existing structure
- Concealment of Gap. Metal flaps or “wings” shall extend from the enclosure to the pole to conceal any gap between the enclosures and the pole. The design of the flaps shall be integrated with the design of the enclosure.

- Owner Identification. A four (4) inch by six (6) inch (maximum) plate with the Carrier’s name, location, identifying information, and emergency telephone number shall be permanently fixed to the enclosure on the side of the cabinet opposite the direction of vehicular traffic of the adjacent roadway. The Owner Identification plate shall not detract from the existing design elements included in the installations and shall integrate with the existing design language of the surrounding environment.”

8.5 Small Cell Facilities Cabinets Integrated within a Wireless Support Structure Transformer Base

8.5.1 Transformer Base/Cabinet Size.

- Equipment cabinets integrated into the support structure transformer base shall have a maximum width or diameter of twenty-four (24) inches, and a maximum height of five (5) feet.
- The top of the cabinet shall have no flat horizontal area greater than two (2) inches as measured outward from the pole to the edge of the cabinet to prevent objects from being placed on top the equipment cabinet.
- Any equipment enclosure will be subject to approval for design elements and ADA integration.

8.5.2 Siting Requirements

- Small Cell facilities cabinets within transformer bases and associated wireless support structures are prohibited to be located within sight visibility triangles.

8.5.3 Design Specifications.

- Base cabinet designs shall match existing surrounding infrastructure as closely as possible in shape, size (dimensionally and volumetrically where possible) and design language.
- Transition to Pole. A decorative transition or base cover shall be installed over the equipment cabinet upper bolts to match the equipment cabinet size, color, and design language of existing surrounding infrastructure.
- Owner Identification. A four (4) inch by six (6) inch (maximum) plate with the Carrier’s name, location, identifying information, and emergency telephone number shall be permanently fixed to the cabinet on the side of the cabinet opposite the direction of vehicular traffic of the adjacent roadway. The Owner Identification plate shall not detract from the existing design elements included in the installations and shall integrate with the existing design language of the surrounding environment.
- Attachment to Foundation. Transformer base/cabinet shall feature a breakaway design in the event of collisions.

8.6 Ground-Mounted Small Cell Facilities

8.6.1 Siting Requirements

- In general, underground facilities for equipment storage are preferable.

- So as not to impede or impair public safety or the legal use of the right-of-way by the traveling public, in no case shall a ground mounted Small Cell facility cabinet be located closer than two feet from the travelway, edge line, face of curb, sidewalk, bike lane, or shared-use path as measured to the nearest part of the wireless support structure.
- Ground-mounted Small Cell facility cabinets shall be located a minimum of twelve (12) feet from any permanent object or existing lawful encroachment in the right-of-way to allow for access.
- Ground-mounted Small Cell facility cabinets shall not be sited in conflict with required intersection sight distance triangles.
- Ground-mounted Small Cell facility cabinet locations shall be located a minimum of twelve (12) feet from driveway aprons as measured parallel to the right-of-way, unless otherwise approved by the Director of the Department of Public Works

8.6.2 Design Specifications

- Attachment to Foundation/Slab: Cabinets must be secured to a concrete foundation or slab with a breakaway design in the event of collisions.
- Owner Identification. A four (4) inch by six (6) inch (maximum) plate with the Carrier's name, location, identifying information, and emergency telephone number shall be permanently fixed to the cabinet.

8.6.3 Additional Landscape Screening

- Screening of Small Cell facility cabinets with a variety of plant material may be required based on the characteristics of the surrounding area.
- All proposed ground mounted equipment cabinets shall be reviewed for determination of applicability of the landscape screening requirement based on the surrounding context, and where required, for appropriateness of the proposed planting plan and plant specifications by the City of New Orleans, Department of Parks and Parkways.

8.7 Power Supply and Fiber Optic Connections (All Request Types)

8.7.1 Independent Power and Communication Sources Required

- Small Cell facilities located on city-owned wireless support structures may not use the same power or communication source providing power and/or communication for the existing facility original to the purposes of the support structure. The independent power source must be contained within a separate conduit preferably inside the support structure. The applicant shall coordinate, establish, maintain and pay for all power and communication connections with private utilities.

8.7.2 Utility Undergrounding Required

- Where an Underground Utility District is present, all service lines from the power source to the Small Cell facilities and wireless support structure shall be located underground.

8.7.3 Wiring, Cables and Conduit Requirements

- Spools and/or coils of excess fiber optic or coaxial cables or any other wires shall not be stored on the pole except completely within the approved enclosures or cabinets.
- Exposed wires, cables, connections and external conduit are prohibited, except as specified in the Context Specific Design Guidelines based on the characteristics of the wireless support structure.
- Underground conduit shall meet the specifications set forth by the City of New Orleans.

8.8 Other Small Cell Facilities Prohibitions.

8.8.1 Lighting

- Lighting directly associated with Small Cell facilities is prohibited. Any internal lights associated with electronic equipment shall be shielded from public view.

8.8.2 Signage

- Signage is prohibited on all Small Cell facilities and wireless support structures, including stickers, logos, text, and other non-essential graphics and information other than the owner identification unless required by FCC.

8.8.3 Prohibited Wireless Facilities

- Microwave and macro towers are not permitted within the right-of-way. Any wireless backhaul facilities must be included within the original permit application and may be approved on a case by case basis.

8.9 Removal of Small Cell Facilities and Wireless Support Structures (Type 3 Requests)

8.9.1 Remediation of City-Owned Support Structures

- All City-owned support structures must be returned to an equal or better state, upon removal of small cell facilities. All mounting hardware and equipment must be removed from the site. All holes left in the pole must be neatly sealed from any moisture intrusion and painted to match the pole.

8.9.2 Remediation of Sites

- Applicant shall restore all areas of the right-of-way impacted by the Small Cell facilities and/or wireless support structure installation and/or removal to equal or better condition.

9 Definitions

The following serve to define terms used in the guidelines as they relate to the public spaces in New Orleans:

Areas of Special Interest – Historic Districts under the jurisdiction of the Historic District Landmarks Commission and the Vieux Carré Commission, Historic Landmarked Properties, areas included within the Downtown Development District, Undergrounding Districts, and areas under the jurisdiction of the Department of Parks and Parkways.

Antenna – Communications equipment that transmits and/or receives electromagnetic signals used for the provision of Wireless Services or other wireless communications. This definition does not apply to broadcast antennas, antennas designed for amateur radio use, or satellite dishes for residential or household purposes.

Applicable Codes - means uniform building, fire, safety, electrical, plumbing and mechanical codes adopted by a recognized national code organization to the extent such codes have been adopted by the City or otherwise are applicable in the City;

Building Entrance Area – The building entry setting is an integral component of the functional and decorative features of architectural design. These entrances are delineated by one or more of the following features, such as: doors, pilaster, entablatures, columns, balustrades, columns, fanlights, sidelights, stairs or ramps, podiums plinths, flagpoles, sculptural or decorative elements, and designed landscape plantings flanking the entry.

Building face – Any building wall, or its projection, that fronts a right-of-way.

City – means the City of New Orleans.

Clear pedestrian path – The straight path that is free of all obstructions within the sidewalk between the amenity zone and the public parking area or property line/building restriction line. The clear pedestrian path is measured from the farthest extended portion of any element projecting out from the building facade, such as a sidewalk café, to the curb line or the nearest obstruction, such as the outer edge of a tree box.

Collocate - means to install, mount, maintain, modify, operate and/or replace a Communications Facility on an existing Support Structure, Pole, or Tower or any other structure capable of supporting such Communications Facility. “Collocation” has a corresponding meaning.

Communications Facility - means, collectively, the equipment at a fixed location or locations that enables FCC-licensed or FCC-authorized communications between user equipment and a communications network, including: (i) radio transceivers, Antennas, coaxial or fiber-optic cable, regular and backup power supplies, and comparable equipment, regardless of technological configuration; and (ii) all other equipment associated with any of the foregoing.

Communications Service Provider - means a cable operator, as defined in 47 U.S.C. § 522(5), a provider of information service, as defined in 47 U.S.C. § 153(24); or a provider of telecommunications service, as defined in 47 U.S.C. § 153(53).

Critical Root Zone: The Critical Root Zone (CRZ) of a tree is established based on the trunk diameter. The CRZ is an equidistant circular area which has a radius calculated at one foot (1') to every one inch (1") diameter of trunk taken at four and one-half feet (4.5') above grade, or is defined as the outer edge of the dripline, whichever distance is furthest.

Decorative Pole - means a City owned Pole that is specially designed and placed for aesthetic purposes, or that has specifically designed aesthetic characteristics such as shape, color, or texture, other than plain wood poles as commonly may be used in ROW for general utility or lighting services.

FCC - means the Federal Communications Commission of the United States.

Operator – wireless carrier, etc.

Permit - means a written authorization (in electronic or hard copy format) required by the City to perform an action or initiate, continue, or complete installation of a Communications Facility, or an associated Support Structure, Pole, or Tower.

Pole - means a pole, such as a utility, lighting, streetlight Pole, traffic, or similar pole, not exceeding fifty (50) feet in height above grade, made of wood, concrete, metal or other material, located or to be located within the Public ROW. A Pole does not include a Tower or Support Structure.

Replacement - means, in connection with an existing Pole, Support Structure or Tower, replacement of same with a new structure, similar in design, size and scale to the existing structure and in conformance with current City regulations, in order to address limitations of the existing structure to structurally support Collocation of a Communications Facility. In connection with replacement of a Pole or Tower to support Collocation of a Wireless Facility, similarity in size and scale shall be evaluated consistent with 47 C.F.R. 1.40001 Subpart b (7).

Undergrounding District – Areas of the City that historically had overhead utility lines but have now been undergrounded by either coordination with developments, by use of City funds, by resolution to enforce private property undergrounding of overhead services, or a combination of these means.

Small Wireless Facility – means a Wireless Facility installed by a Wireless Services Provider or Wireless Infrastructure Provider Communications Facility (including, without limitation, any strand-mounted Antenna) that has a volume of no more than twenty-eight (28) cubic feet in volume. The following types of associated, ancillary equipment are not included in the calculation of equipment volume: electric meter, concealment elements, telecommunications demarcation box, grounding equipment, power transfer switch, cut-off switch, and vertical cable runs for connection of power and wired telecommunications services. This term is used interchangeably with “Small Cell.”

Standalone poles – Independent poles solely used for the attachment of Small Cell antennas and used only for the purpose of transmitting wireless signals. Also referred to as Free-standing pole.

State – means the State of Louisiana.

Support Structure or Structure - means a building, a billboard, a water tank or any other structure to which a Communications Facility is or may be attached. Support Structure does not include a Pole or a Tower.

Technically feasible - means that by virtue of engineering or spectrum usage, the proposed placement for a wireless facility or its design or site location can be implemented without a reduction in the functionality of the wireless facility.

Tower – Means any structure in the ROW of which sole purpose is to support Wireless Services;

Wireless Infrastructure Provider - means any Person, including a Person authorized to provide telecommunications service in the State, that builds or installs and/or operates Wireless Facilities or Poles, Towers or Support Structures on which Wireless Facilities are or are intended to be used for Collocation, but that is not a Wireless Services Provider.

Wireless Services – means personal wireless services as that term is defined in 47 U.S.C. § 332(c)(7)(C)(i).

Wireless Services Provider – means a Person who provides Wireless Services.