



# MOVING NEW ORLEANS



**City of New Orleans**  
Mayor LaToya Cantrell

# THIS SLIDESHOW...



**IS ONLY 5 MINUTES  
LONG**

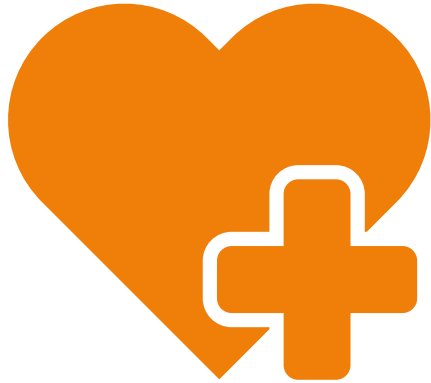


**TELLS YOU ABOUT  
THE PROJECT**



**ORIENTS YOU TO  
THE PUBLIC  
MEETING**

# HOW WE MOVE AROUND SHAPES...



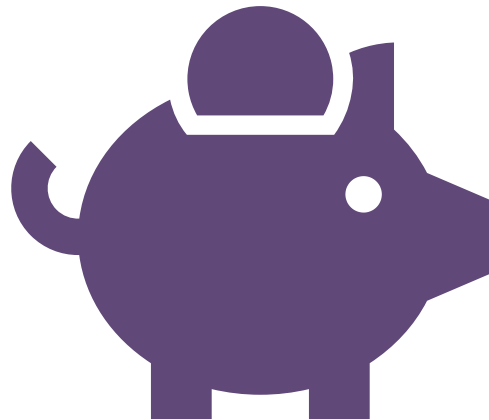
**OUR HEALTH**



**OUR EQUITY**



**OUR ENVIRONMENT**



**OUR ECONOMY**



**OUR FUTURE**



**City of New Orleans**  
Mayor LaToya Cantrell



**In New Orleans:**



**City of New Orleans**  
Mayor LaToya Cantrell



**In New Orleans:**

**1 out of 10  
people don't  
have access to a  
car**



**City of New Orleans**  
Mayor LaToya Cantrell



# In New Orleans:

**1 out of 4 are living in poverty (less than ~\$19,000 per household)**



**City of New Orleans**  
Mayor LaToya Cantrell



# In New Orleans:

**1 out of 4 people  
don't drive to  
work**



**City of New Orleans**  
Mayor LaToya Cantrell



**In New Orleans,  
people get to  
work by:**

**TAKING TRANSIT 8%**



**City of New Orleans**  
Mayor LaToya Cantrell





**In New Orleans,  
people get to  
work by:**

**TAKING TRANSIT 8%**

**WALKING 5%**



**City of New Orleans**  
Mayor LaToya Cantrell



**In New Orleans,  
people get to  
work by:**

**TAKING TRANSIT 8%**  
**WALKING 5%**  
**BICYCLING 3%**



**City of New Orleans**  
Mayor LaToya Cantrell



## In the United States:

6 out of 10 people would bike if it were safe and comfortable

**Mayor LaToya Cantrell** is determined to  
**improve** our transportation so  
**people of all ages and abilities**  
**can get to where they**  
**work, learn, and play.**



**This means making transportation**  
**safe, efficient,**  
**equitable, and connected**  
**for *all modes* of travel.**

**Mayor Cantrell is**  
***Moving New Orleans* forward.**



**New Orleans** has an unprecedented opportunity. We are rebuilding streets, improving transit operations, and expanding bike share.



**New Links**  
REIMAGINE OUR  
TRANSIT NETWORK



**City of New Orleans**  
Mayor LaToya Cantrell

**New Orleans and cities  
across America are also  
making transportation  
better by quickly building  
safe and connected  
bikeway networks.**



# BIKEWAYS CAN BENEFIT ALL

Safer bikeways and more people bicycling can be good for:

**Safety** by reducing crashes and close calls.

**Health** by encouraging physical activity.

**Equity** by increasing accessibility and mobility.

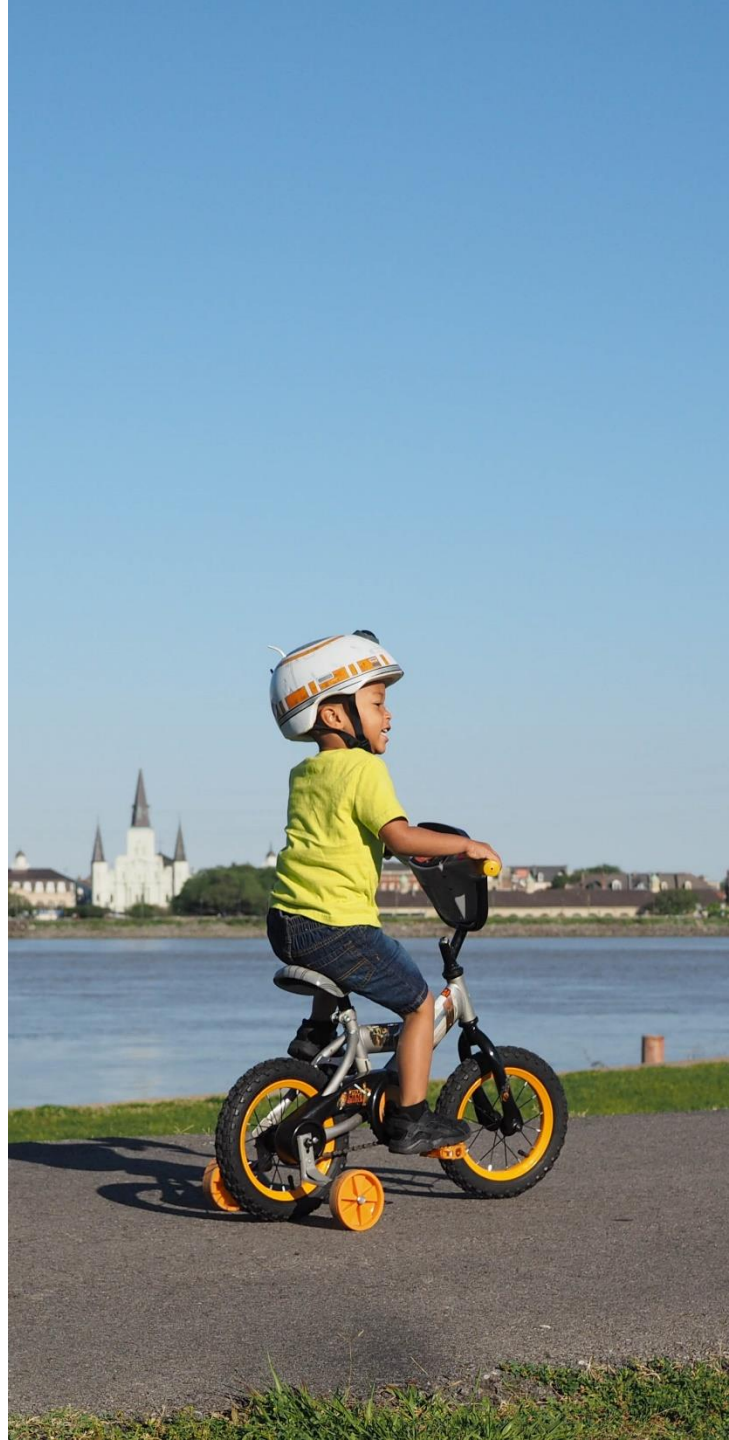
The **Environment** by improving air quality.

The **Economy** by increasing retail activity and property values.

**Community vibrancy** by connecting people and places.







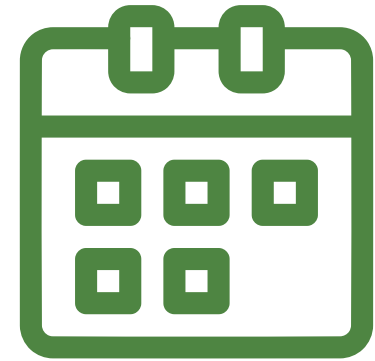
# WE ARE...



**BUILDING** a  
**NETWORK** of



**SAFE**  
**BIKEWAYS**



**IN** the **NEXT**  
**2 YEARS**



**City of New Orleans**  
Mayor LaToya Cantrell

# THESE PRINCIPLES ARE GUIDING US



# THESE PRINCIPLES ARE GUIDING US



**SAFE**

Will I feel safe and comfortable?



**City of New Orleans**  
Mayor LaToya Cantrell

# THESE PRINCIPLES ARE GUIDING US



## CONNECTED

Can I get where I'm going?



**City of New Orleans**  
Mayor LaToya Cantrell

# THESE PRINCIPLES ARE GUIDING US



## USEFUL

Will my route be direct and convenient?



# THESE PRINCIPLES ARE GUIDING US



## **EQUITABLE**

Will this benefit underserved populations?



# THESE PRINCIPLES ARE GUIDING US



## **TIMELY**

Will this project be done soon?

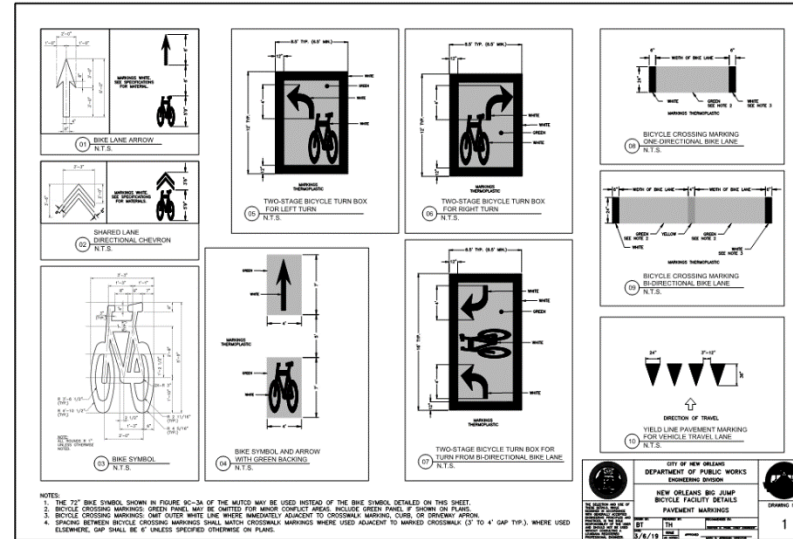




# WHAT TO EXPECT OVER NEXT 2 YEARS



Citywide Bike Network Plan



Bike Facility Standards and Design Guidance



Improved and Expanded Bike Network

- 75 connected miles
- Reduce crashes
- Increase ridership
- Improve equity



City of New Orleans  
Mayor LaToya Cantrell

# PROTECTED BIKE LANES IN PROGRESS

- Every year the City improves streets using various funding sources.
- We are using a “Complete Streets” approach to add bike lanes and other features to these streets.
- 8 streets are currently in design in:
  - Gentilly
  - Lakeview
  - New Orleans East
  - Algiers
  - Central City
- 1 street is under construction (pictured)
- More in the next 2 years



**Broad Street (Thalia to Tulane)**



# We will focus on areas with many crashes involving bicyclists.

## Bicycle Crashes

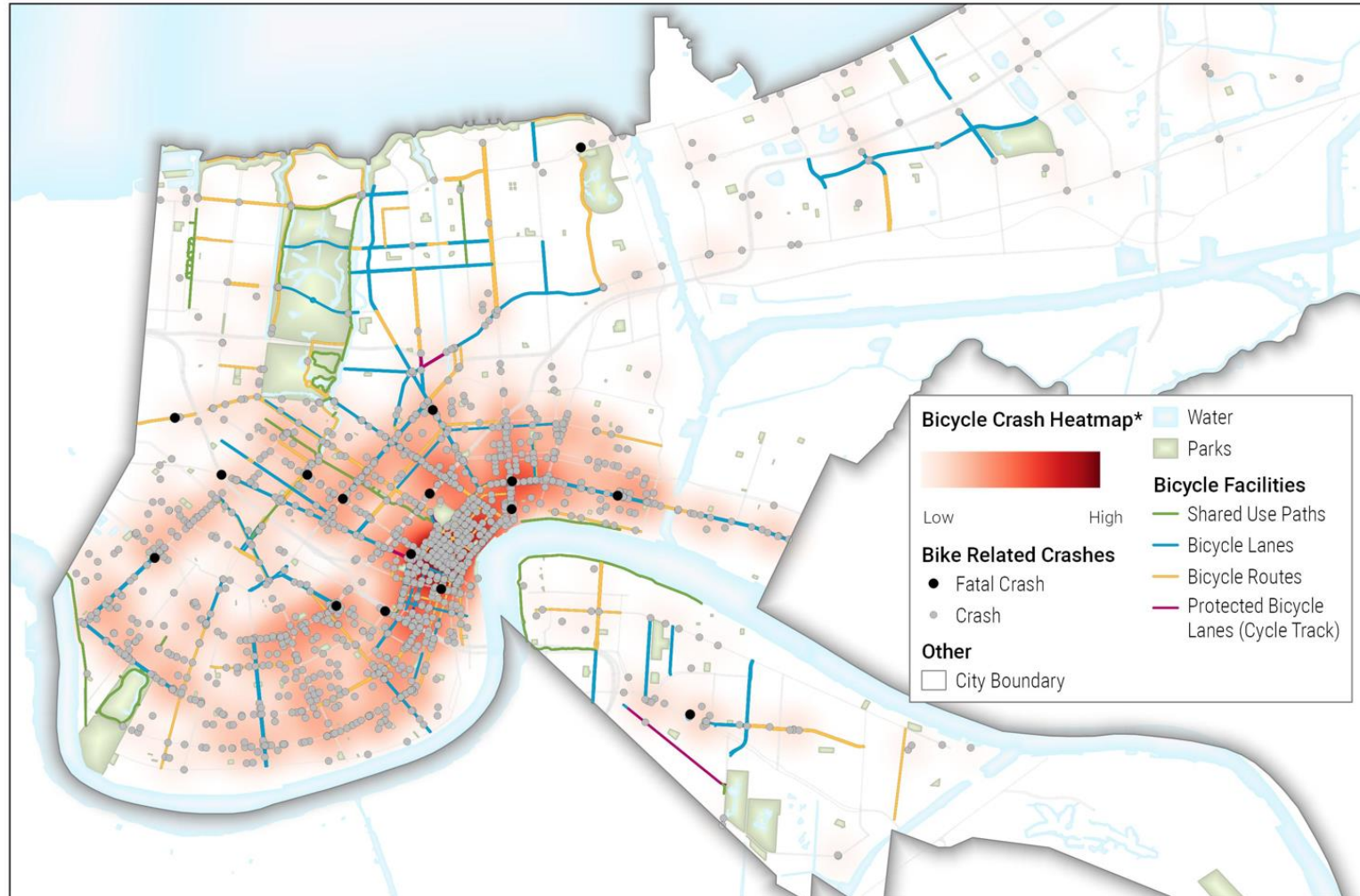
**Source (Citation):** This data consists of information collected by the Louisiana Department of Transportation and Development (LA DOTD) from numerous sources including state and local police departments. The source data was collected by various entities using a variety of reporting methods. These data have been geographically located in the form of X and Y coordinates to generally represent the location of an accident. LA DOTD processed the data to determine geographic locations.

The LA DOTD and the Regional Planning Commission for Jefferson, Orleans, Plaquemines, St. Bernard, St. Charles, St. John the Baptist, St. Tammany, and Tangipahoa Parishes (RPC) are not responsible for any errors arising from any use or alterations made to the data. There is no guarantee of warranty concerning the accuracy of the data. Users should be aware that this data may not represent current conditions. Users should not use these data for critical applications without a full awareness of their limitations. Under no circumstances is resale or distribution of the data permitted.

Any use of the data must be accompanied with this citation and accompanying seal.

### Special Disclaimer concerning Crash data:

- 1) CONFIDENTIAL INFORMATION: This document is exempt from discovery or admission under 23 U.S.C. 409. Contact the LADOTD Traffic Safety Office at (225) 379-1929 before releasing any information.
- 2) This report is prepared solely for the purpose of identifying, evaluating and planning safety improvement on public roads; and is therefore exempt from discovery or admission under 23 U.S.C. 409.



<b>Bicycle Crash Heatmap*</b>		Water
		Parks
Low	High	<b>Bicycle Facilities</b>
		Shared Use Paths
		Bicycle Lanes
		Bicycle Routes
		Protected Bicycle Lanes (Cycle Track)
<b>Bike Related Crashes</b>		
Fatal Crash		
Crash		
<b>Other</b>		
City Boundary		



\*For the heatmap, each crash is weighted by the number of people injured in the crash. The dataset includes 1807 crashes  
Data Source: Louisiana Department of Transportation and Development

**Bicycle-Related Crashes 2012-2017**  
**City of New Orleans**

# We will focus on areas where people bicycle and would like to bicycle.

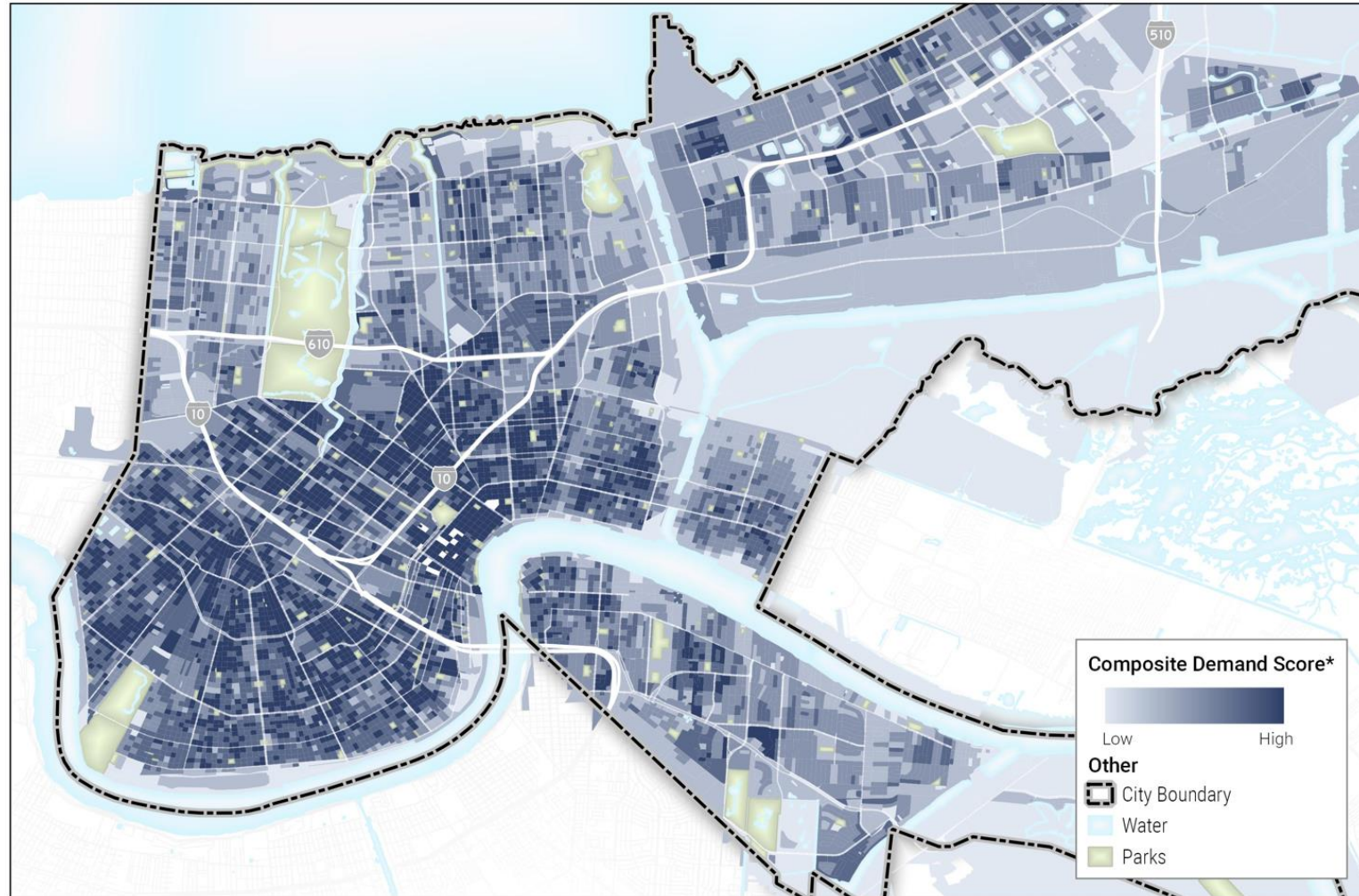
Composite Demand

Intersection Density  
50%

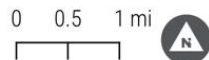
Population Density  
25%

Households below Poverty Line  
15%

Employment Density  
10%



**TOOLE**  
DESIGN

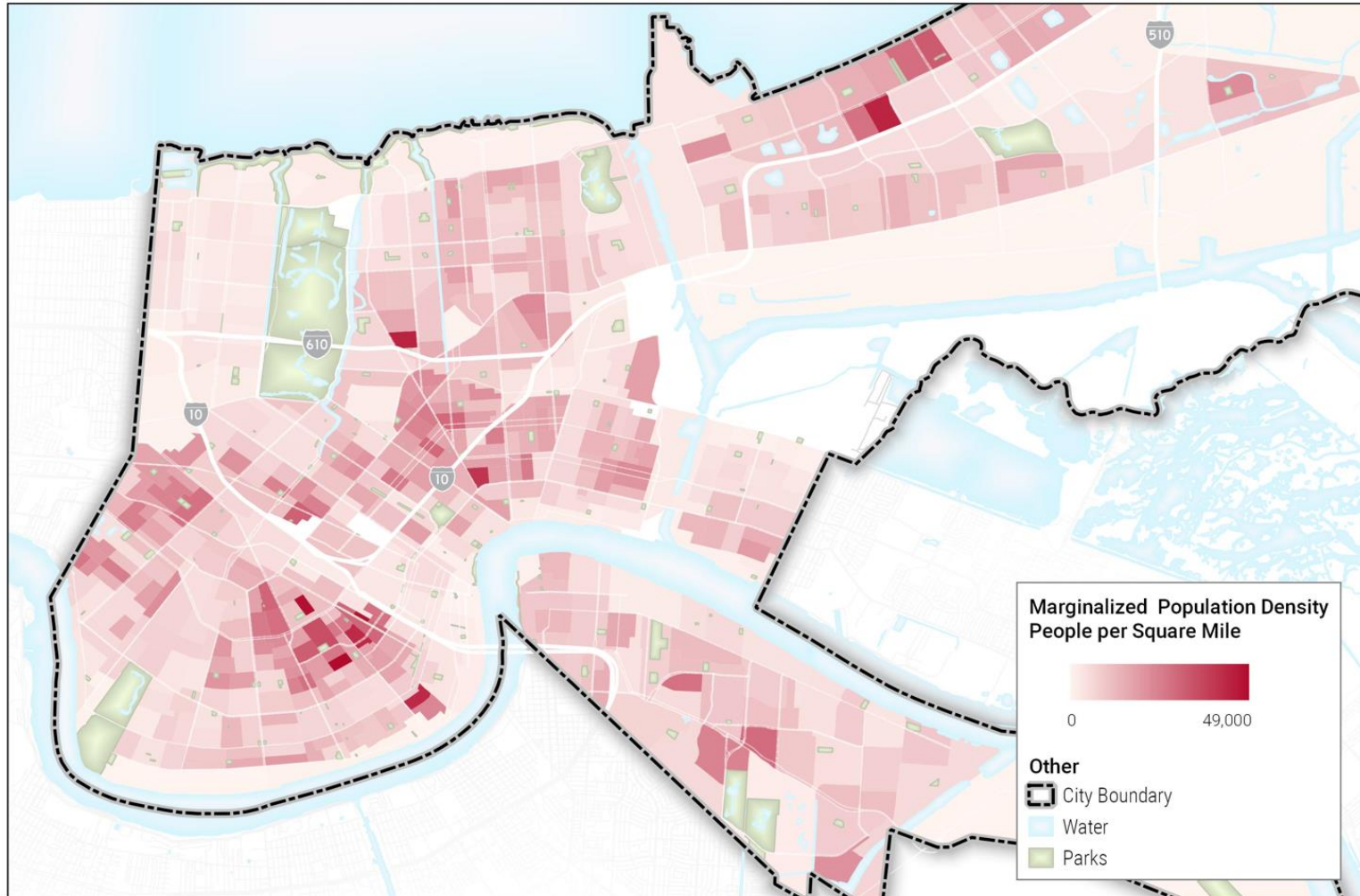


\*Composite demand score sums the individual factors weighted as follows:  
Intersection Density: 50% Population Density: 25% Percent of Households Below Poverty Line: 15%  
Employment Density: 10%

**Potential Demand: Composite Score  
City of New Orleans**

# We will focus on areas with high densities of underserved populations.

Cumulative  
Density of  
Equity  
Populations

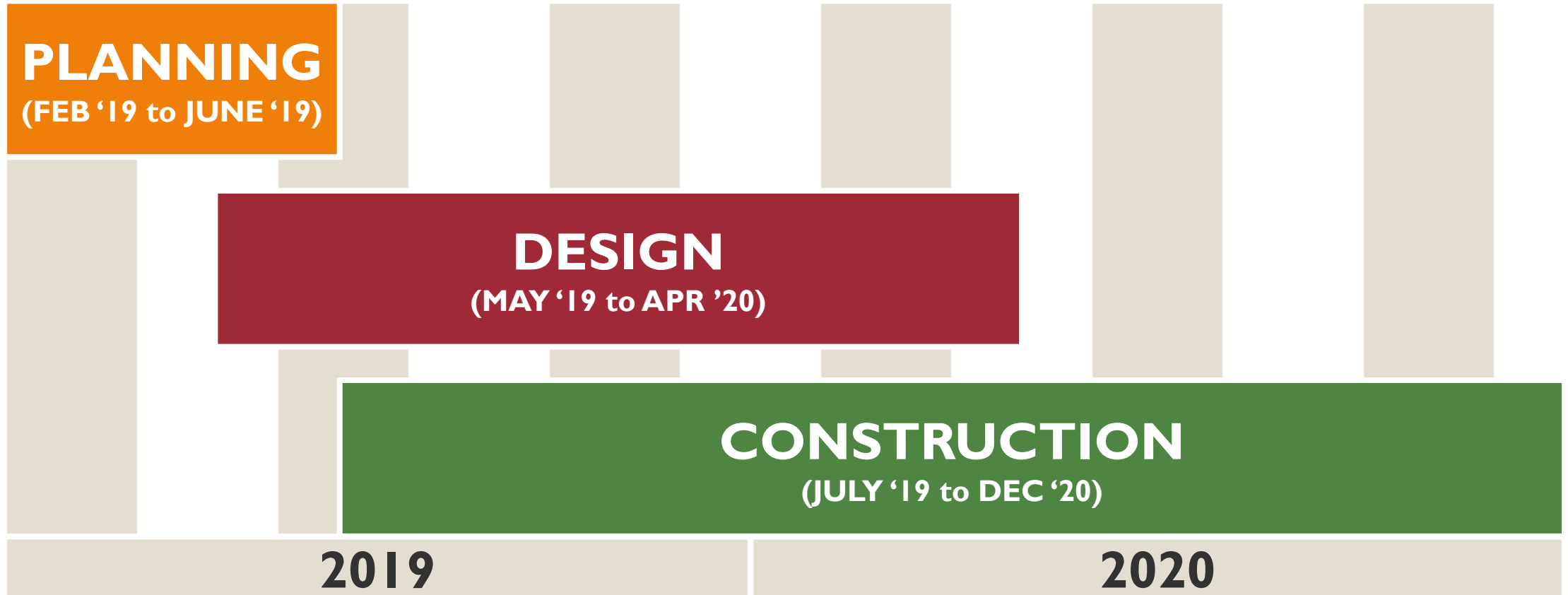


**We will grow the bike network to serve more people every year thereafter.**



**City of New Orleans**  
Mayor LaToya Cantrell

# TIMELINE



**After this slideshow,  
please go to any activity station.**





## **WHAT'S IN A PICTURE?**

will introduce you to bikeway types and ask for your preferences.

## **WHAT'S STRESSING YOU OUT?**

will ask you about what causes stress when traveling in New Orleans.

## **WHAT ARE YOUR ROUTES AND BARRIERS?**

will let you show us the routes you take and routes you'd like to take.

## **WHERE DO YOU WANT TO GO BY BIKE?**

will let you highlight your most common destinations.

## **WHAT ELSE SHOULD WE KNOW?**

will give you time to ask questions and provide comments on anything else.





# **PUBLIC ENGAGEMENT**

**APRIL NEIGHBORHOOD MEETINGS:  
EXISTING NETWORK**

**JULY NEIGHBORHOOD MEETINGS:  
PROPOSED NETWORK PLAN**

**PROGRAM WEBPAGE:  
[NOLA.GOV/MOVINGNEWORLEANS](https://nola.gov/movingneworleans)**

**Please go to any activity station.  
This slideshow will restart in 3 minutes.**



# **PUBLIC ENGAGEMENT**

**APRIL NEIGHBORHOOD MEETINGS:  
EXISTING NETWORK**

**JULY NEIGHBORHOOD MEETINGS:  
PROPOSED NETWORK PLAN**

**PROGRAM WEBPAGE:  
[NOLA.GOV/MOVINGNEWORLEANS](https://nola.gov/movingneworleans)**

**Please go to any activity station.  
This slideshow will restart in 2.5 minutes.**



# **PUBLIC ENGAGEMENT**

**APRIL NEIGHBORHOOD MEETINGS:  
EXISTING NETWORK**

**JULY NEIGHBORHOOD MEETINGS:  
PROPOSED NETWORK PLAN**

**PROGRAM WEBPAGE:  
[NOLA.GOV/MOVINGNEWORLEANS](https://nola.gov/movingneworleans)**

**Please go to any activity station.  
This slideshow will restart in 2 minutes.**



# **PUBLIC ENGAGEMENT**

**APRIL NEIGHBORHOOD MEETINGS:  
EXISTING NETWORK**

**JULY NEIGHBORHOOD MEETINGS:  
PROPOSED NETWORK PLAN**

**PROGRAM WEBPAGE:  
[NOLA.GOV/MOVINGNEWORLEANS](https://nola.gov/movingneworleans)**

**Please go to any activity station.  
This slideshow will restart in 1.5 minutes.**



# **PUBLIC ENGAGEMENT**

**APRIL NEIGHBORHOOD MEETINGS:  
EXISTING NETWORK**

**JULY NEIGHBORHOOD MEETINGS:  
PROPOSED NETWORK PLAN**

**PROGRAM WEBPAGE:  
[NOLA.GOV/MOVINGNEWORLEANS](https://nola.gov/movingneworleans)**

**Please go to any activity station.  
This slideshow will restart in 1 minute.**



# **PUBLIC ENGAGEMENT**

**APRIL NEIGHBORHOOD MEETINGS:  
EXISTING NETWORK**

**JULY NEIGHBORHOOD MEETINGS:  
PROPOSED NETWORK PLAN**

**PROGRAM WEBPAGE:  
[NOLA.GOV/MOVINGNEWORLEANS](https://nola.gov/movingneworleans)**

**Please go to any activity station.  
This slideshow will restart in 30 seconds.**