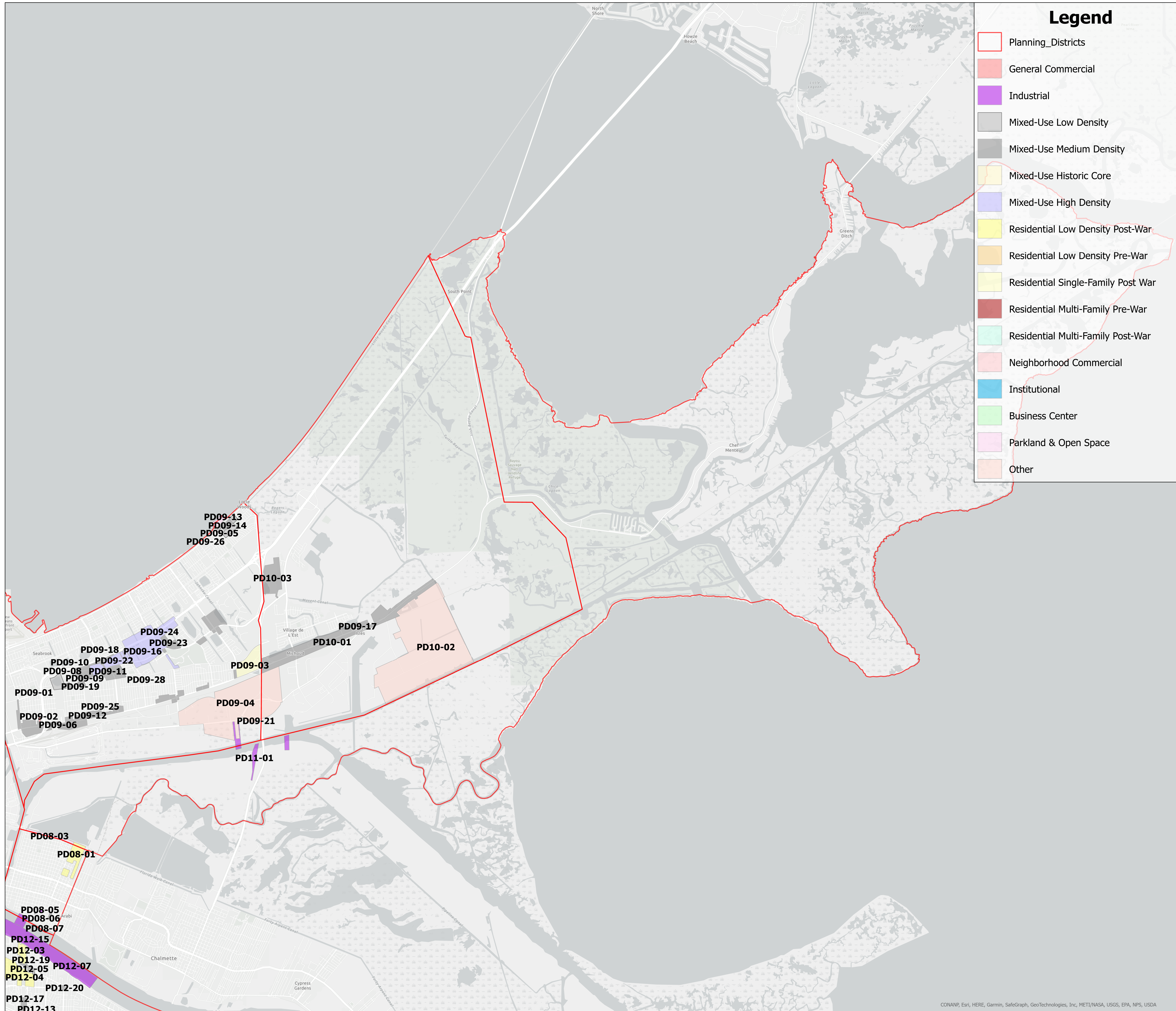




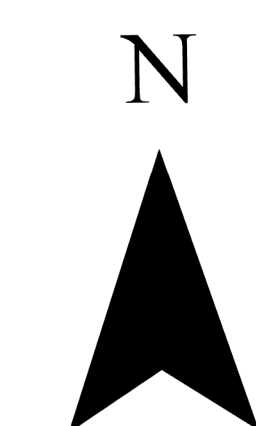
Proposed Future Land-Use Changes Planning District 11



Legend

- Planning_Districts
- General Commercial
- Industrial
- Mixed-Use Low Density
- Mixed-Use Medium Density
- Mixed-Use Historic Core
- Mixed-Use High Density
- Residential Low Density Post-War
- Residential Low Density Pre-War
- Residential Single-Family Post War
- Residential Multi-Family Pre-War
- Residential Multi-Family Post-War
- Neighborhood Commercial
- Institutional
- Business Center
- Parkland & Open Space
- Other

Figure	Current FLUM	Proposed FLUM	Address	Requestor
PD08-01	Residential Single-Family Post-War	Residential Low Density Post-War	Lower 9th Ward	CPC
PD08-02	Residential Medium Density Pre-War	Mixed-Use Medium Density	631 St Maurice St	Council District E
PD08-03	Mixed-Use Low Density	Parkland & Open Space		Council District E
PD08-04	Industrial	Mixed-Use Medium Density	5635 Douglas St	Council District E
PD08-05	Mixed-Use Medium Density	Industrial		Port NOLA
PD08-06	Residential Low Density Pre-War	Industrial	Alabo St	Port NOLA
PD08-07	Parkland & Open Space	Industrial	Andry St Wharf	Port NOLA
PD09-01	Residential Single-Family Post-War	Mixed-Use Low Density	6800 I 10 Service Rd East	CPC
PD09-02	Residential Low Density Post-War	General Commercial	6325 Chef Menteur Hwy	CPC
PD09-03	Business Center	Residential Single-Family Post War	Chef & Bullard	CPC
PD09-04	Planned Development Area	Industrial OR Mixed-Use Medium Density	Regional Business Park Center	CPC & Mayor's Office
PD09-05	Residential Single-Family Post-War	Neighborhood Commercial	13860 Hayne Blvd.	CPC
PD09-06	Residential Low Density Post-War	General Commercial	6809 Brutus St	CPC
PD09-07	Residential Single-Family Post-War	Mixed-Use Medium Density	7201 Dwyer Rd	Mayor's Office
PD09-08	Residential Low Density Post-War	Mixed-Use Medium Density	43164 Parc Brittany Bl.	Mayor's Office
PD09-09	Residential Low Density Post-War	Mixed-Use Medium Density		Mayor's Office
PD09-10	Residential Low Density Post-War	Mixed-Use Medium Density	2 Route 64	Mayor's Office
PD09-11	General Commercial	Mixed-Use Medium Density	40737 Crowder Boulevard	Mayor's Office
PD09-12	Neighborhood Commercial	Mixed-Use Medium Density	4407 Wilson Ave	Mayor's Office
PD09-13	Natural Areas	Parkland & Open Space		Mayor's Office
PD09-14	General Planned Development	Mixed-Use Medium Density	14000 Hayne Blvd	Mayor's Office
PD09-15	General Planned Development	General Commercial OR Mixed-Use Medium Density OR Mixed-Use High Density	14000 Hayne Blvd (Lincoln Beach)	Mayor's Office
PD09-16	General Commercial	Mixed-Use High Density	Former Mall Plaza Site	Mayor's Office
PD09-17	Neighborhood Commercial & General Commercial	Mixed-Use Medium Density	Chef Menteur Corridor (Industrial Canal - Bayou Sauvage)	Mayor's Council
PD09-18	Neighborhood Commercial & General Commercial	Mixed-Use Medium Density	Lake Forest Avenue Corridor	Mayor's Office
PD09-19	Neighborhood Commercial & Residential Single-Family Post War	Mixed-Use Medium Density	Mayo Blvd Corridor	Mayor's Office
PD09-20	Residential Low Density Post-War	Mixed-Use Medium Density		Mayor's Office
PD09-21	Planned Development Area	Industrial		Port NOLA
PD09-22	General Commercial & Residential Multi-Family Post War	Mixed-Use High Density	Lake Forest Blvd Corridor Section 2	Mayor's Office
PD09-23	Neighborhood Commercial	Mixed-Use Medium Density	Lake Forest Boulevard Corridor Amendment, Section 3	Mayor's Office
PD09-24	General Commercial	Mixed-Use High Density	Read Boulevard General Commercial Areas	Mayor's Office
PD09-25	Neighborhood Commercial	Mixed-Use Medium Density	Wilson Avenue / Chef Menteur Highway	Mayor's Office
PD09-26	Neighborhood Commercial & Residential Low Density Post War	Mixed-Use Low Density	Hayne Blvd. Opportunity Site	Mayor's Office
PD09-27	Planned Development Area	Mixed-Use Medium Density	Hayne Blvd. Opportunity Site	Mayor's Office
PD09-28	General Commercial	Mixed-Use Medium Density		Mayor's Office
PD10-01	Neighborhood Commercial	Industrial	14100-14300 Chef Menteur Hwy	CPC
PD10-02	Planned Development Area	Industrial OR Mixed-Use Medium Density	Regional Business Park East	Mayor's Office
PD10-03	Planned Development Area	Mixed-Use Medium Density	Jazzland/Six Flags Site	Mayor's Office
PD11-01	Natural Areas	Industrial	Paris Road	Port NOLA



Scale: 1:45,000

