



Proposed Future Land-Use Changes Planning District 6

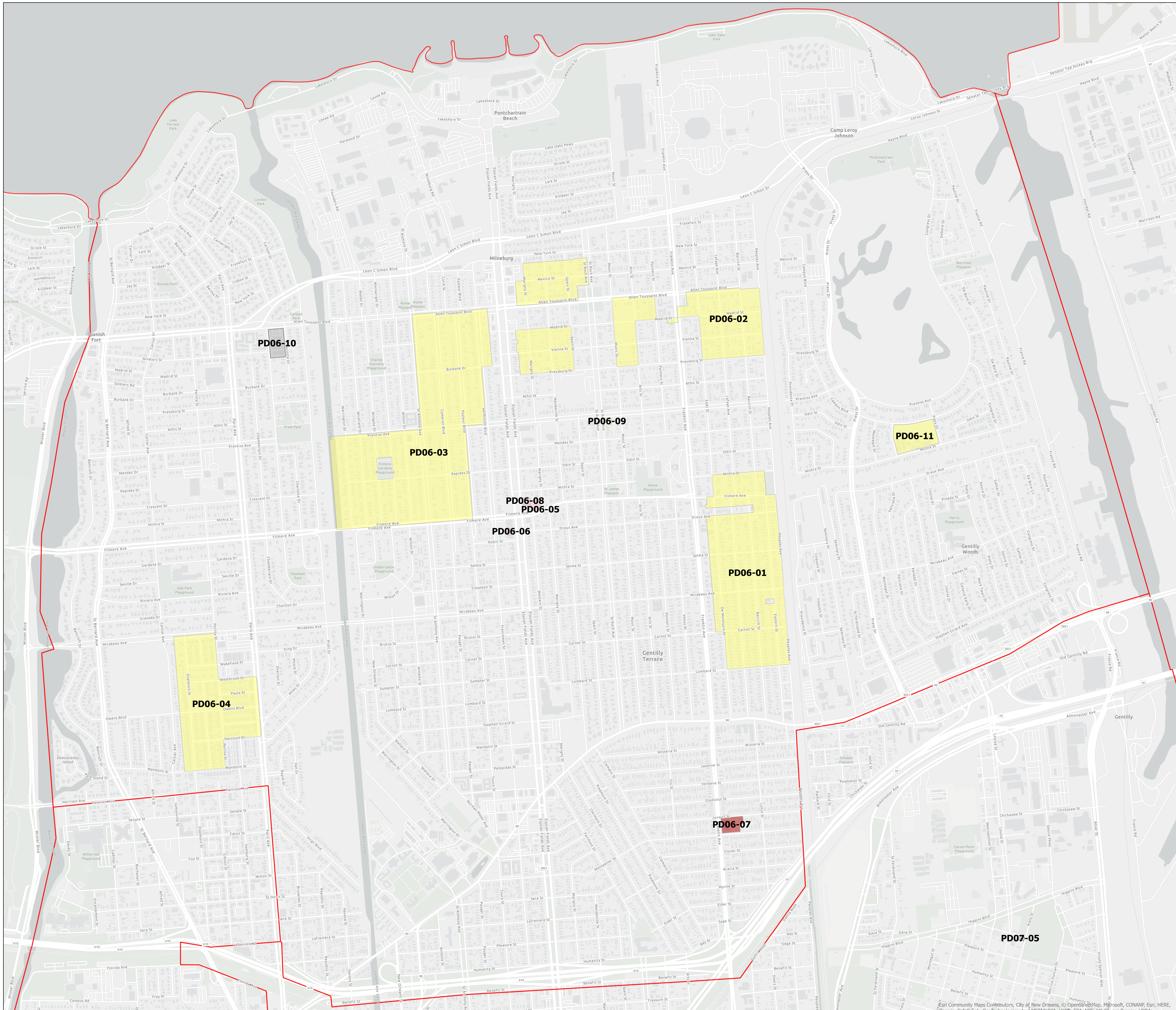
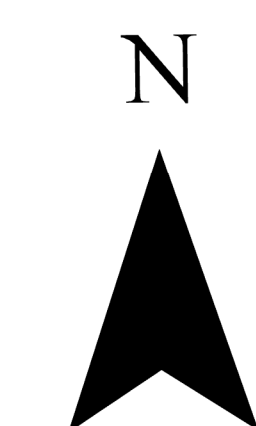


Figure	Current FLUM	Proposed FLUM	Address	Requestor
PD06-01	Residential Single-Family Post-War	Residential Low Density Post-War	Gentilly Terrace	CPC
PD06-02	Residential Single-Family Post-War	Residential Low Density Post-War	Allen Toussaint Blvd	CPC
PD06-03	Residential Single-Family Post-War	Residential Low Density Post-War	London Canal	CPC
PD06-04	Residential Single-Family Post-War	Residential Low Density Post-War	Mirabeau St	CPC
PD06-05	Residential Single-Family Post-War	Neighborhood Commercial	2221 Filmore St.	CPC
PD06-06	Residential Single-Family Post-War	Neighborhood Commercial	5212 Elysian Fields Ave.	CPC
PD06-07	Residential Low Density Pre-War	Residential Multi-Family Pre-War	3821 Franklin Ave.	CPC
PD06-08	Residential Single-Family Post-War	Neighborhood Commercial	5315 Elysian Fields Ave.	CPC
PD06-09	Neighborhood Commercial	Residential Single-Family Post War	2406-2416 Prentiss Ave	CPC
PD06-10	Residential Single-Family Post-War	Mixed-Use Low Density	6101 Chatham St	Mayor's Office
PD06-11	Residential Single-Family Post-War	Residential Low Density Post-War	5500 Piety Drive	Mayor's Office
PD07-05	Residential Low Density Post-War	Mixed-Use Low Density	3440 Piety St	CPC

Legend

- Planning_Districts
- General Commercial
- Industrial
- Mixed-Use Low Density
- Mixed-Use Medium Density
- Mixed-Use Historic Core
- Mixed-Use High Density
- Residential Low Density Post-War
- Residential Low Density Pre-War
- Residential Single-Family Post War
- Residential Multi-Family Pre-War
- Residential Multi-Family Post-War
- Neighborhood Commercial
- Institutional
- Business Center
- Parkland & Open Space
- Other



Scale: 1:7,000



Map Contributors: City of New Orleans, OpenStreetMap, Microsoft, CONANP, Esri, HERE, Garmin, Safe-Globe, GeoTechnologies, Inc, METI/ANSA, USGS, EPA, NPS, US Census Bureau, USDA